

NEW SINGLE-FAMILY HOMES



Heritage Ranch • 16177 SW 277th Street, Homestead, FL 33030
(GPS: SW 162nd Avenue & SW 278th Street)

D.R. Horton is equal housing opportunity builder. Home and community information, including pricing, included features, terms, availability and amenities, are subject to change and prior sale at any time without notice or obligation. Pictures, photographs, features, colors and sizes are approximate for illustration purposes only and will vary from the homes as built. Florida Certified General Contractor #CGC059394

ELLINGTON

4 Bedrooms, 3 Bathrooms, 2-Car Garage



Elevation - "D"



Elevation - "E"

FRASER

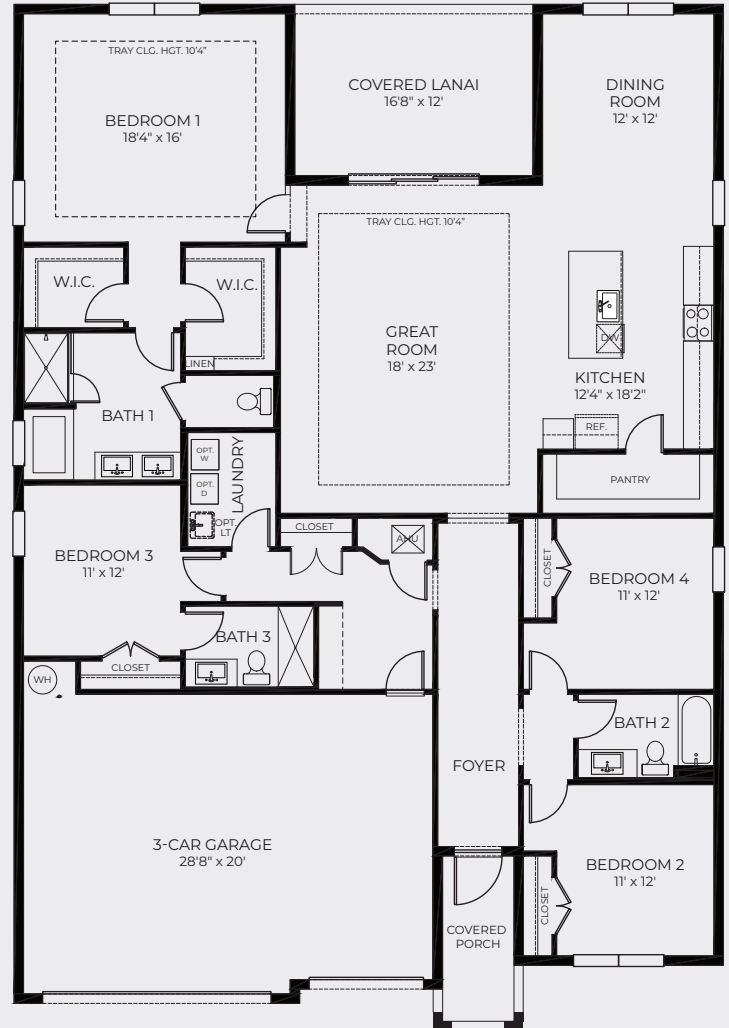
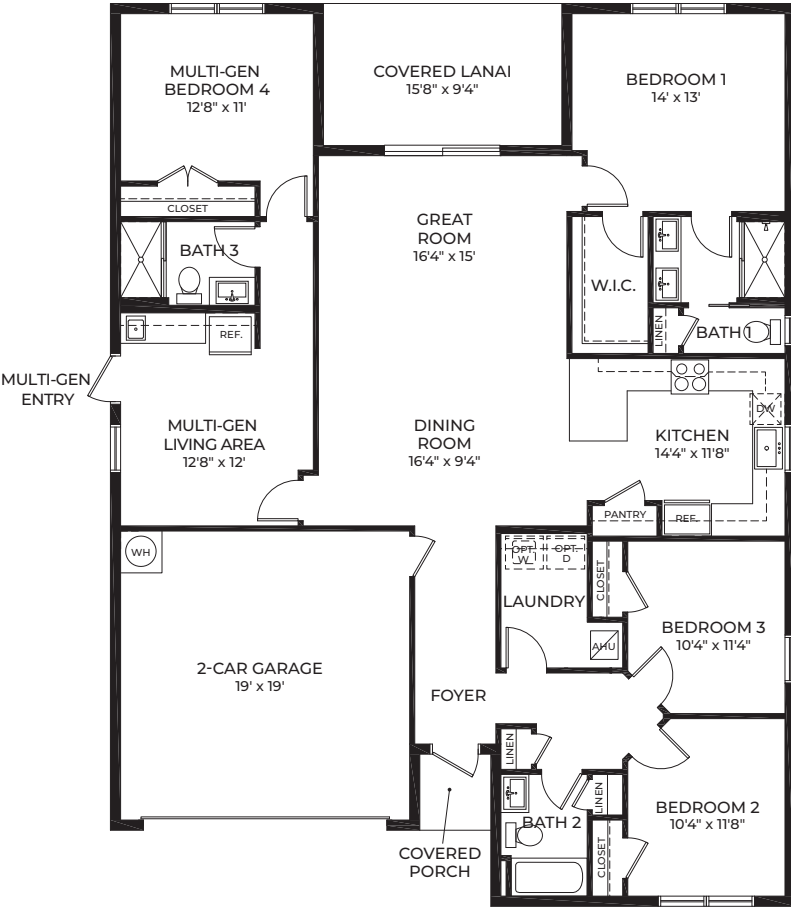
4 Bedrooms, 3 Bathrooms, 3-Car Garage



Elevation - "B"



Elevation - "D"



Total A/C Sq. Ft.	1,985
Covered Porch.....	23
Covered Lanai.....	145
2-Car Garage.....	390
Total Sq. Ft.	2,543

Total A/C Sq. Ft.	2,533
Covered Porch.....	60
Covered Lanai.....	200
3-Car Garage.....	643
Total Sq. Ft.	3,436

CAMDEN

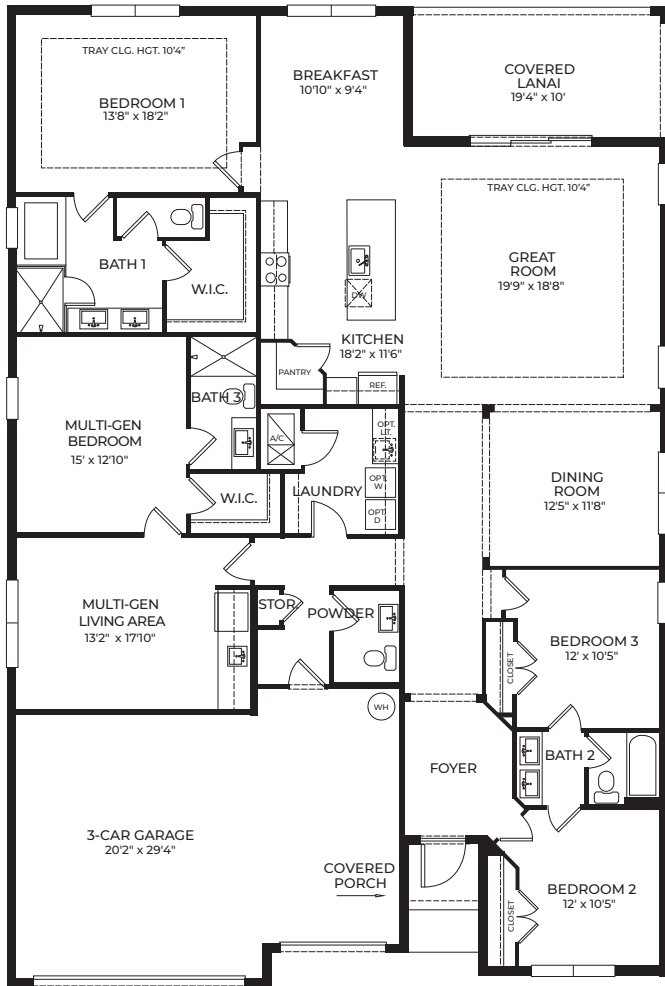
4 Bedrooms, 3.5 Bathrooms, 3-Car Garage



Elevation - "B"



Elevation - "D"



Total A/C Sq. Ft.	2,837
Covered Porch	27
Covered Lanai	193
3-Car Garage	619
Total Sq. Ft.	3,676

BELLISTER

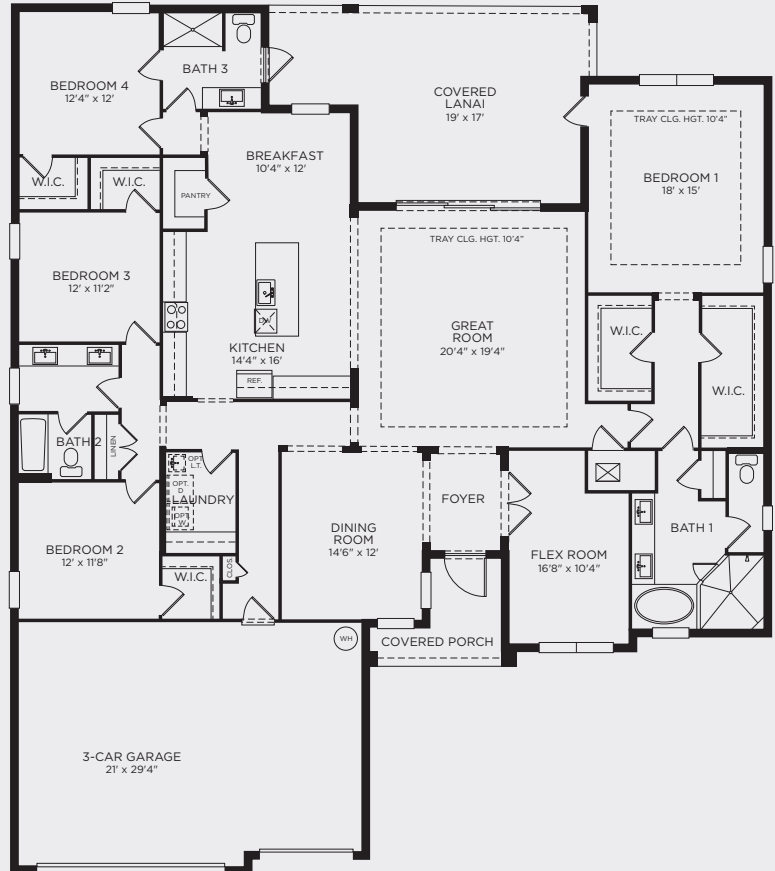
4 Bedrooms, 3 Bathrooms, Flex, 3-Car Garage



Elevation - "B"



Elevation - "D"



Total A/C Sq. Ft.	2,986
Covered Porch	75
Covered Lanai	397
3-Car Garage	651
Total Sq. Ft.	4,109

Heritage Ranch | Included Features

Architectural Artistry

- Reinforced concrete monolithic foundation slab
- Masonry exterior walls
- Professionally engineered roof with hurricane clips and bracing
- Baked in color through cement flat roof tiles
- Architecturally designed exterior elevations with each floor plan
- Fully sodded homesites with professionally designed landscaping
- Gutters in front area of driveway, entry walkway
- Hunter® automatic irrigation system
- Paver driveway, entry walkway, and patio or lanai
- Durable metal garage door
- Therma Tru® embossed insulated fiberglass front door
- Impact resistant windows
- Exterior weather proof outlets (G.F.I.)
- Exterior hose bib connection

Heart of the Home

- Knockdown textured finish on walls and ceilings
- Jeld-Wen® 2-panel interior doors
- Maxim® light fixtures
- Kwikset® satin nickel keyed entry handleset
- Kwikset® satin nickel interior door levers throughout
- Vinyl-coated ventilated shelving in all closets
- Daltile® 18" x 18" ceramic tile flooring in all first floor living areas (excluding bedrooms)
- Mohawk® luxurious wall-to-wall carpeting (installed over dense padding)
- Sherwin Williams® bright white interior paint
- Square style baseboards throughout

A Gourmet's Delight

- Whirlpool® stainless steel appliances:
 - 25 Cu. Ft. side x side refrigerator with ice maker
 - Glass top range with microwave above
 - Built-in dishwasher
- Moen® single lever faucet
- Moen® garbage disposal
- Sterling single bowl stainless steel sink
- Quality crafted custom designed cabinets with 36" uppers
- Granite countertop with built up edge
- Subway tile backsplash

Thoughtful Details

- Uponor PEX® plumbing water lines
- Minimum 50 gallon insulated water heater (per plan)
- Interior washer/dryer hook-up
- R-30 blown insulation above all air-conditioned living space
- R-13 BATT insulation between interior wall and garage wall
- R-4.1 insulated exterior masonry walls
- Carrier® energy efficient central A/C and heating system

Bathroom Conveniences

- Adult-height custom designed cabinets with cultured marble tops
- Daltile® 12" x 12" ceramic tile floors & shower walls
- Full vanity mirrors
- Frameless shower doors in all baths
- Sterling® soaking tub in bedroom one (per plan)
- Gerber® elongated commodes throughout
- Gerber® pedestal sink in powder room (per plan)
- Moen® bathroom faucets throughout
- Air King® exhaust fans

Technology Standard Features

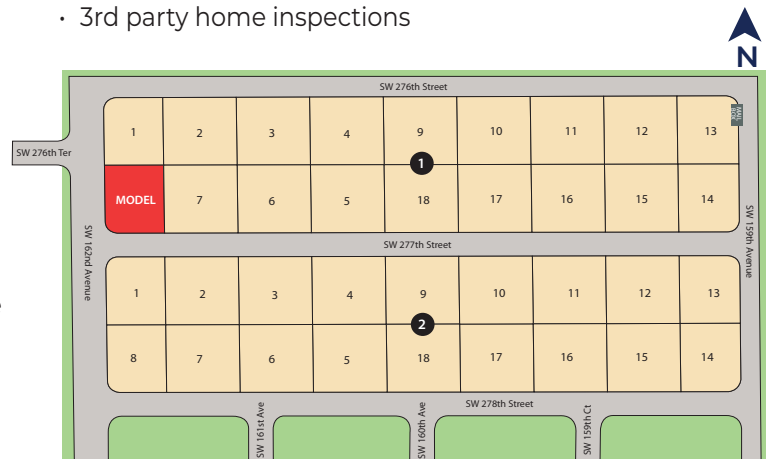
- Square D® surge protection on all major appliances
- Pre-wired for ceiling fans with switches in all bedrooms and great room
- High speed structured wiring for 4-line phone, video and computer Includes CAT-5 data lines and RG-6 quad shield coaxial cable (per plan)
- BRK® electrical smoke detectors with battery back-up
- BRK® carbon monoxide detector
- Deako® switches and Cooper® outlets throughout
- Minimum 150-amp electrical panel with circuit breakers

Home Is® Connected

- Qolysys IQ Panel II 7" HD Touchscreen with built-in 5MP camera
- Skybell® Trim Plus WiFi video doorbell
- Echo Dot™ speaker with Alexa
- Z Wave™ Thermostat
- Z Wave™ Light Switch
- Z Wave™ Door Lock
- WiFi enabled garage door opener with two transmitters
- Security System w/ 1 motion detector and 3 door contacts

D.R. Horton's Personal Touch

- Personalized New Homeowner Orientation
- D.R. Horton 1-Year Warranty
- 10-Year RWC™ warranty to protect your investment
- 10-Year Carrier® limited warranty
- 3rd party home inspections



D.R. Horton is equal housing opportunity builder. Included features subject to change without prior notice or obligation, as a result, please consult with one of our sales representatives for the latest community information. This map is a schematic for exhibition purposes only and does not represent the exact location or configuration of site features, lot lines, easements, amenities, units, buildings or details shown thereon. All homesite sizes are approximate and may vary. All information on this map, including availability and delivery dates is subject to change without notice or obligation. Certified General Contractor License Number CGC059394