

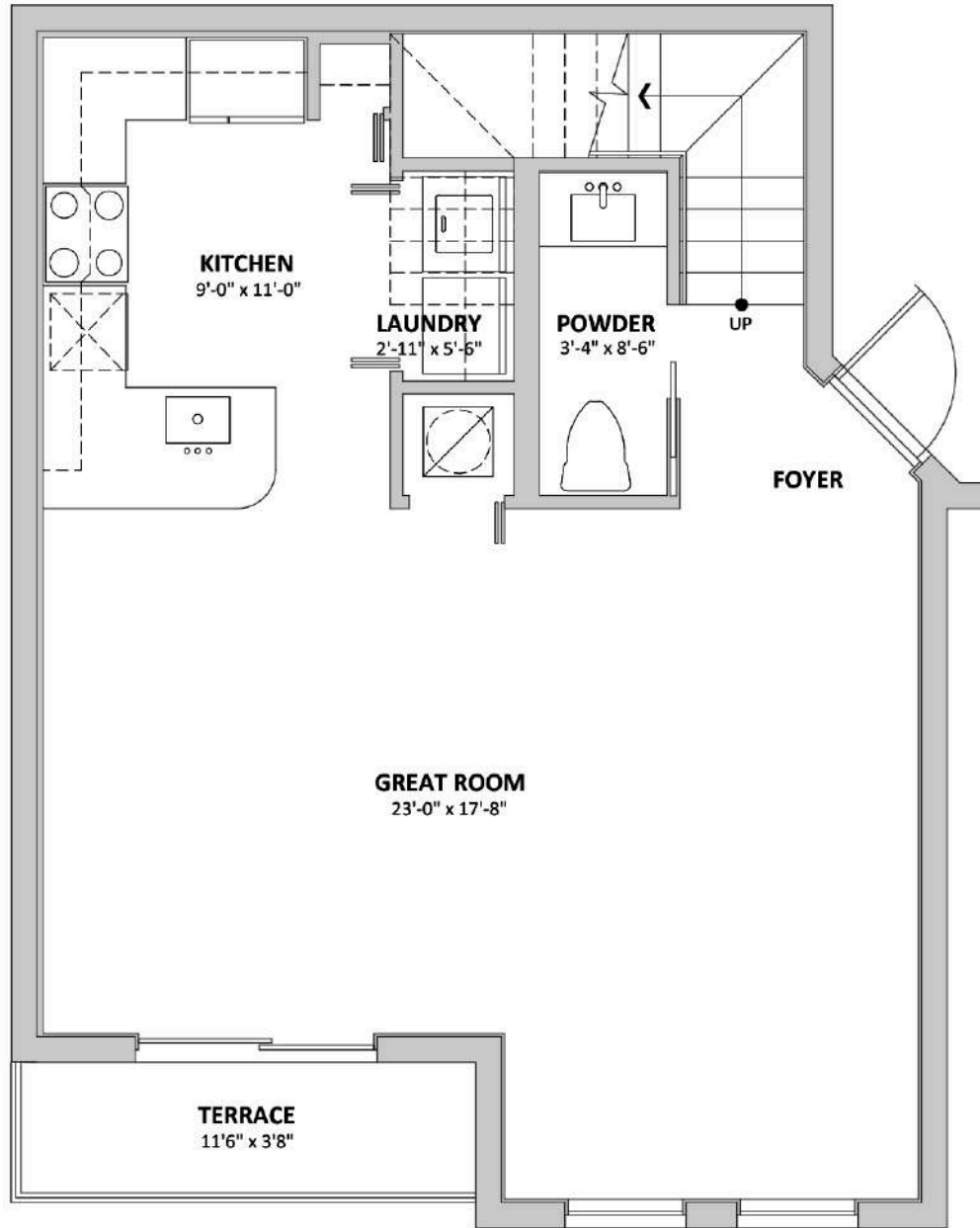
ALLISON

Model A

2 Story - 2 Bedrooms - 2 1/2 Bathrooms, with Great Room and Terrace

Total Area: 1,356 SQ.FT.
A/C Space: 1,311 SQ.FT.
Terrace: 45 SQ.FT.

First Floor



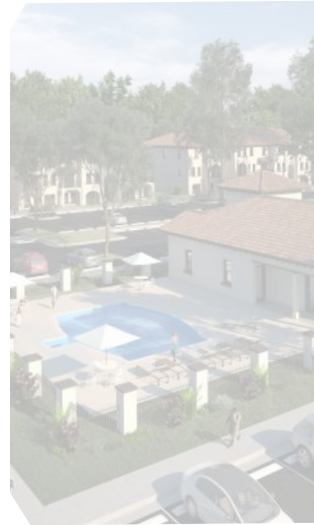
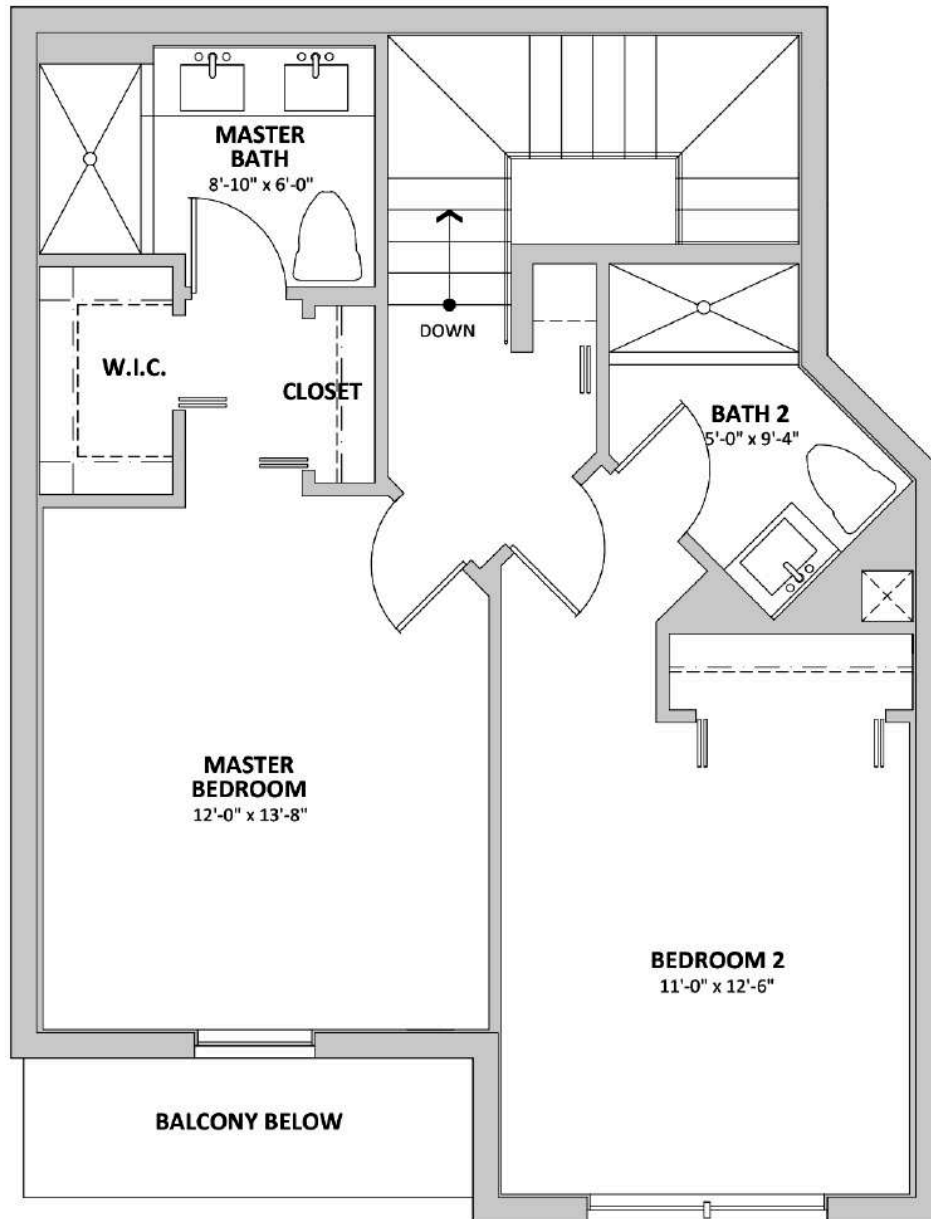
Stated dimensions are measured to the exterior boundaries of the exterior walls and the centerline of interior demising walls and in fact vary from the dimensions that would be determined by using the description and definition of the "Unit" set forth in the Declaration (which generally only includes the interior airspace between the perimeter walls and excludes interior structural components). For your reference, the area of the Unit, determined in accordance with those defined unit boundaries, is 1311, 1473, 1477, 1664, 1375, 1485, 1688 and 1262 for Models A, B, C, CII, D, E, F and G. Note that measurements of rooms set forth on this floor plan are generally taken at the greatest points of each given room (as if the room were a perfect rectangle), without regard for any cutouts. Accordingly, the area of the actual room will typically be smaller than the product obtained by multiplying the stated length times width. All dimensions are approximate and may vary with actual construction, and all floor plans and development plans are subject to change.

ALLISON

Model A

2 Story - 2 Bedrooms - 2 1/2 Bathrooms, with Great Room and Terrace

Second Floor



Stated dimensions are measured to the exterior boundaries of the exterior walls and the centerline of interior demising walls and in fact vary from the dimensions that would be determined by using the description and definition of the "Unit" set forth in the Declaration (which generally only includes the interior airspace between the perimeter walls and excludes interior structural components). For your reference, the area of the Unit, determined in accordance with those defined unit boundaries, is 1311, 1473, 1477, 1664, 1375, 1485, 1688 and 1262 for Models A, B, C, CII, D, E, F and G. Note that measurements of rooms set forth on this floor plan are generally taken at the greatest points of each given room (as if the room were a perfect rectangle), without regard for any cutouts. Accordingly, the area of the actual room will typically be smaller than the product obtained by multiplying the stated length times width. All dimensions are approximate and may vary with actual construction, and all floor plans and development plans are subject to change.

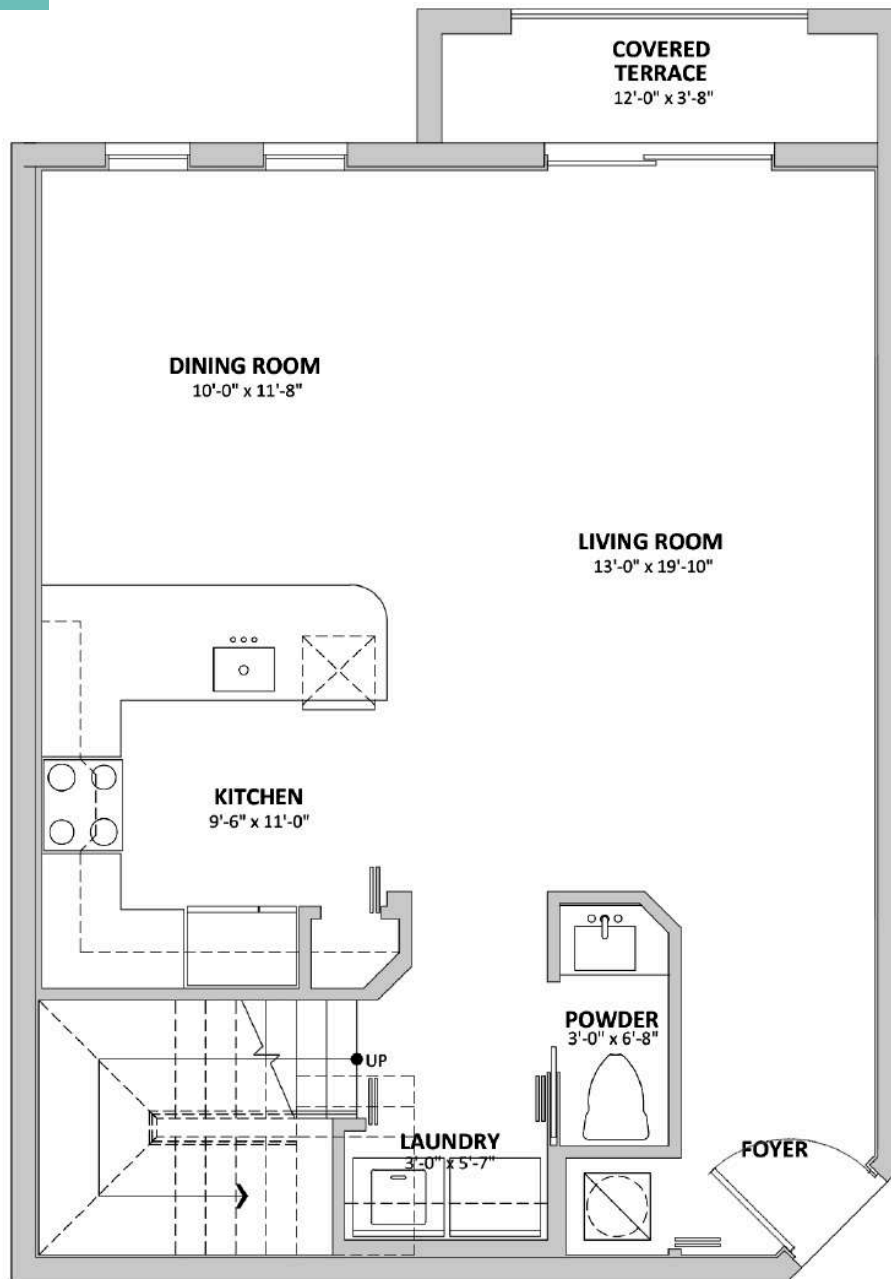
NATHALIE

Model B

2 Story - 3 Bedrooms - 2 1/2 Bathrooms, with Separate Living Room, Dining Room and Covered Terrace

Total Area: 1,522 SQ.FT.
A/C Space: 1,473 SQ.FT.
Terrace: 49 SQ.FT.

First Floor



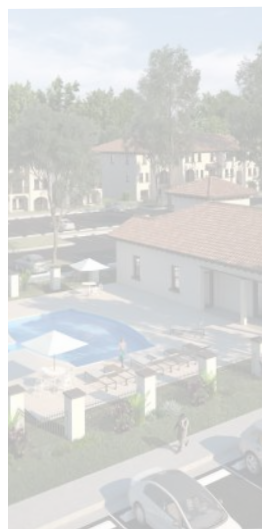
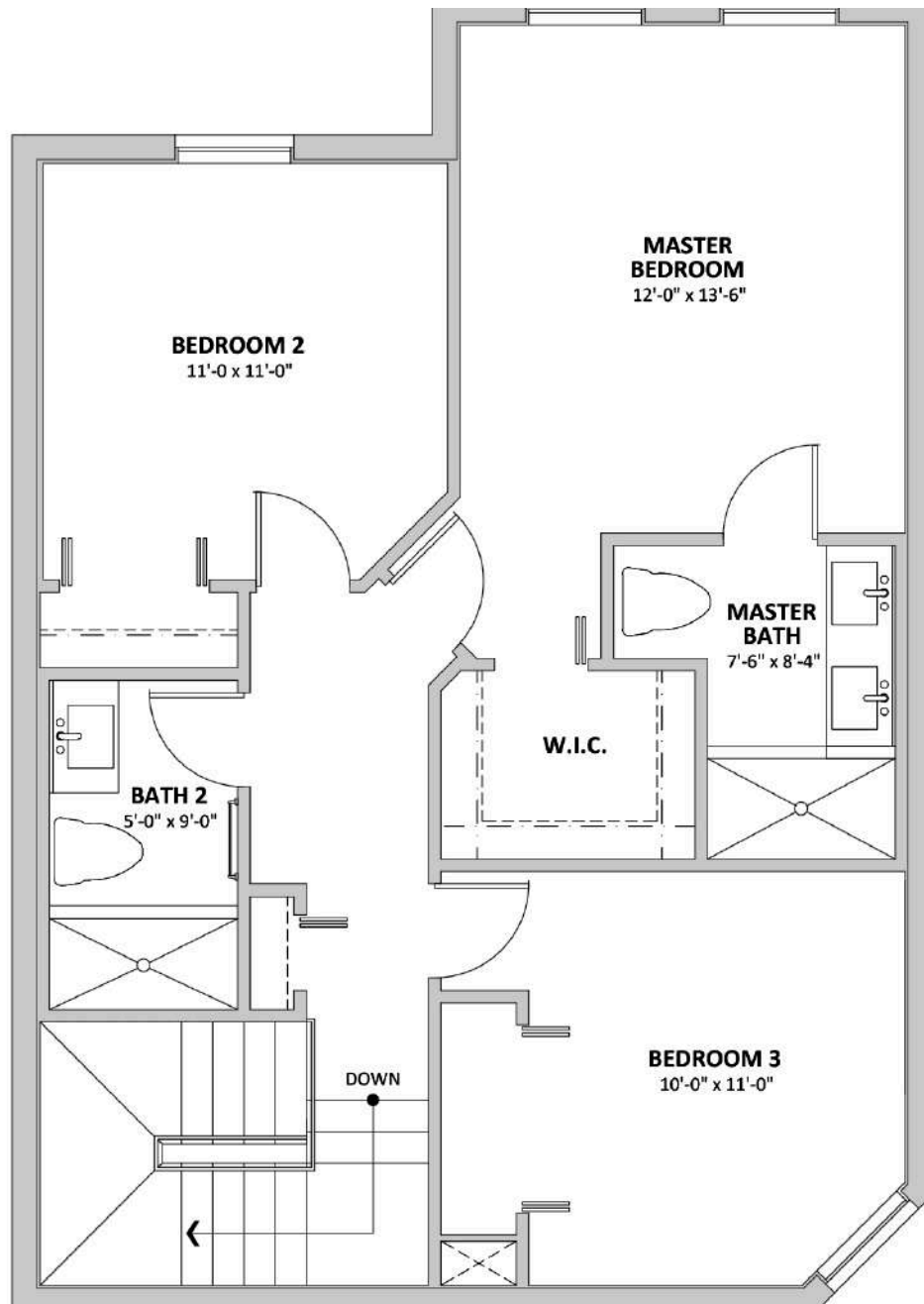
Stated dimensions are measured to the exterior boundaries of the exterior walls and the centerline of interior demising walls and in fact vary from the dimensions that would be determined by using the description and definition of the "Unit" set forth in the Declaration (which generally only includes the interior airspace between the perimeter walls and excludes interior structural components). For your reference, the area of the Unit, determined in accordance with those defined unit boundaries, is 1311, 1473, 1477, 1664, 1375, 1485, 1688 and 1262 for Models A, B, C, CII, D, E, F and G. Note that measurements of rooms set forth on this floor plan are generally taken at the greatest points of each given room (as if the room were a perfect rectangle), without regard for any cutouts. Accordingly, the area of the actual room will typically be smaller than the product obtained by multiplying the stated length times width. All dimensions are approximate and may vary with actual construction, and all floor plans and development plans are subject to change.

NATHALIE

Model B

2 Story - 3 Bedrooms - 2 1/2 Bathrooms, with Separate Living Room, Dining Room and Covered Terrace

Second Floor



Stated dimensions are measured to the exterior boundaries of the exterior walls and the centerline of interior demising walls and in fact vary from the dimensions that would be determined by using the description and definition of the "Unit" set forth in the Declaration (which generally only includes the interior airspace between the perimeter walls and excludes interior structural components). For your reference, the area of the Unit, determined in accordance with those defined unit boundaries, is 1311, 1473, 1477, 1664, 1375, 1485, 1688 and 1262 for Models A, B, C, CII, D, E, F and G. Note that measurements of rooms set forth on this floor plan are generally taken at the greatest points of each given room (as if the room were a perfect rectangle), without regard for any cutouts. Accordingly, the area of the actual room will typically be smaller than the product obtained by multiplying the stated length times width. All dimensions are approximate and may vary with actual construction, and all floor plans and development plans are subject to change.

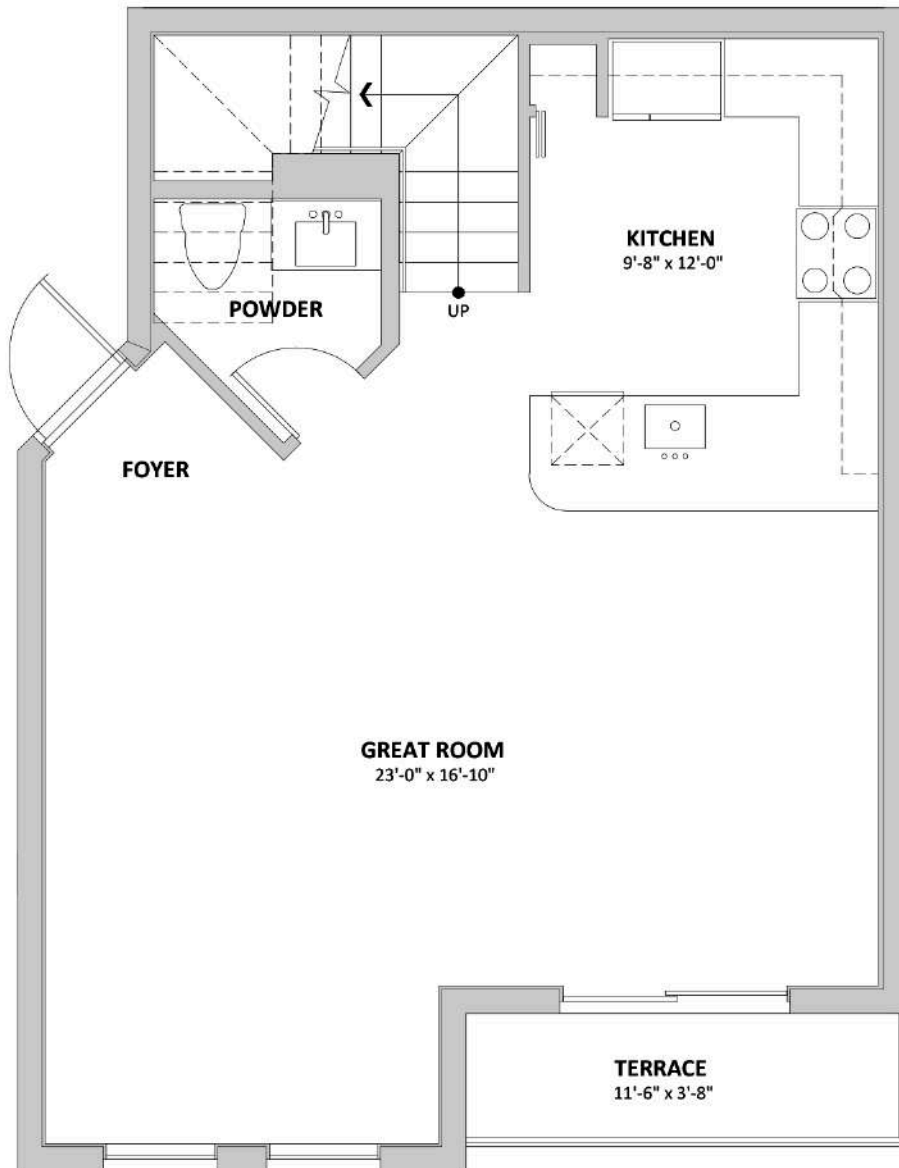
AMANDA

Model C

2 Story - 3 Bedrooms - 2 1/2 Bathrooms, with Great Room and Terrace

Total Area: 1,522 SQ.FT.
A/C Space: 1,477 SQ.FT.
Terrace: 45 SQ.FT.

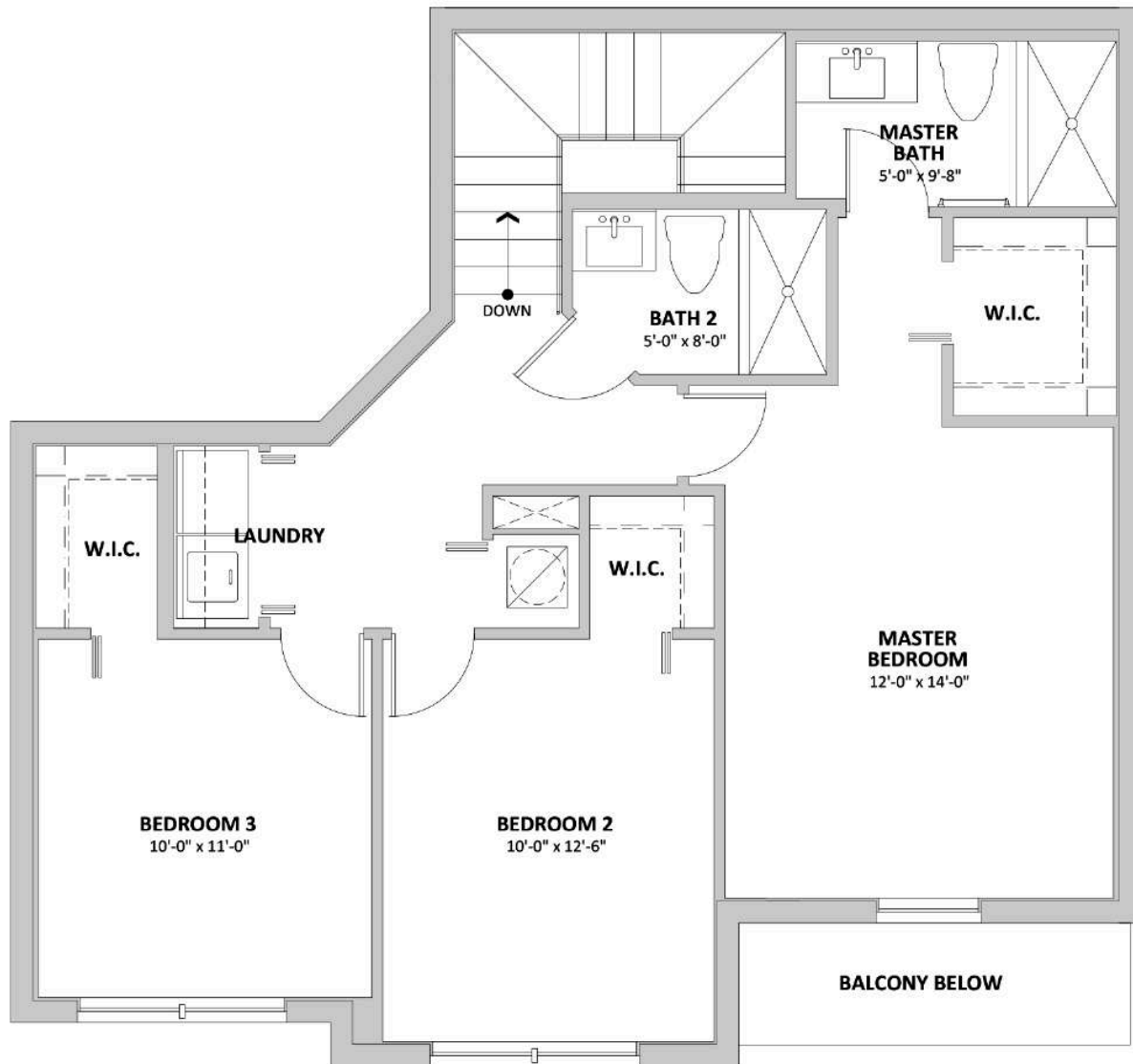
First Floor



Stated dimensions are measured to the exterior boundaries of the exterior walls and the centerline of interior demising walls and in fact vary from the dimensions that would be determined by using the description and definition of the "Unit" set forth in the Declaration (which generally only includes the interior airspace between the perimeter walls and excludes interior structural components). For your reference, the area of the Unit, determined in accordance with those defined unit boundaries, is 1311, 1473, 1477, 1664, 1375, 1485, 1688 and 1262 for Models A, B, C, CII, D, E, F and G. Note that measurements of rooms set forth on this floor plan are generally taken at the greatest points of each given room (as if the room were a perfect rectangle), without regard for any cutouts. Accordingly, the area of the actual room will typically be smaller than the product obtained by multiplying the stated length times width. All dimensions are approximate and may vary with actual construction, and all floor plans and development plans are subject to change.

2 Story - 3 Bedrooms - 2 1/2 Bathrooms, with Great Room and Terrace

Second Floor



Stated dimensions are measured to the exterior boundaries of the exterior walls and the centerline of interior demising walls and in fact vary from the dimensions that would be determined by using the description and definition of the "Unit" set forth in the Declaration (which generally only includes the interior airspace between the perimeter walls and excludes interior structural components). For your reference, the area of the Unit, determined in accordance with those defined unit boundaries, is 1311, 1473, 1477, 1664, 1375, 1485, 1688 and 1262 for Models A, B, C, CII, D, E, F and G. Note that measurements of rooms set forth on this floor plan are generally taken at the greatest points of each given room (as if the room were a perfect rectangle), without regard for any cutouts. Accordingly, the area of the actual room will typically be smaller than the product obtained by multiplying the stated length times width. All dimensions are approximate and may vary with actual construction, and all floor plans and development plans are subject to change.

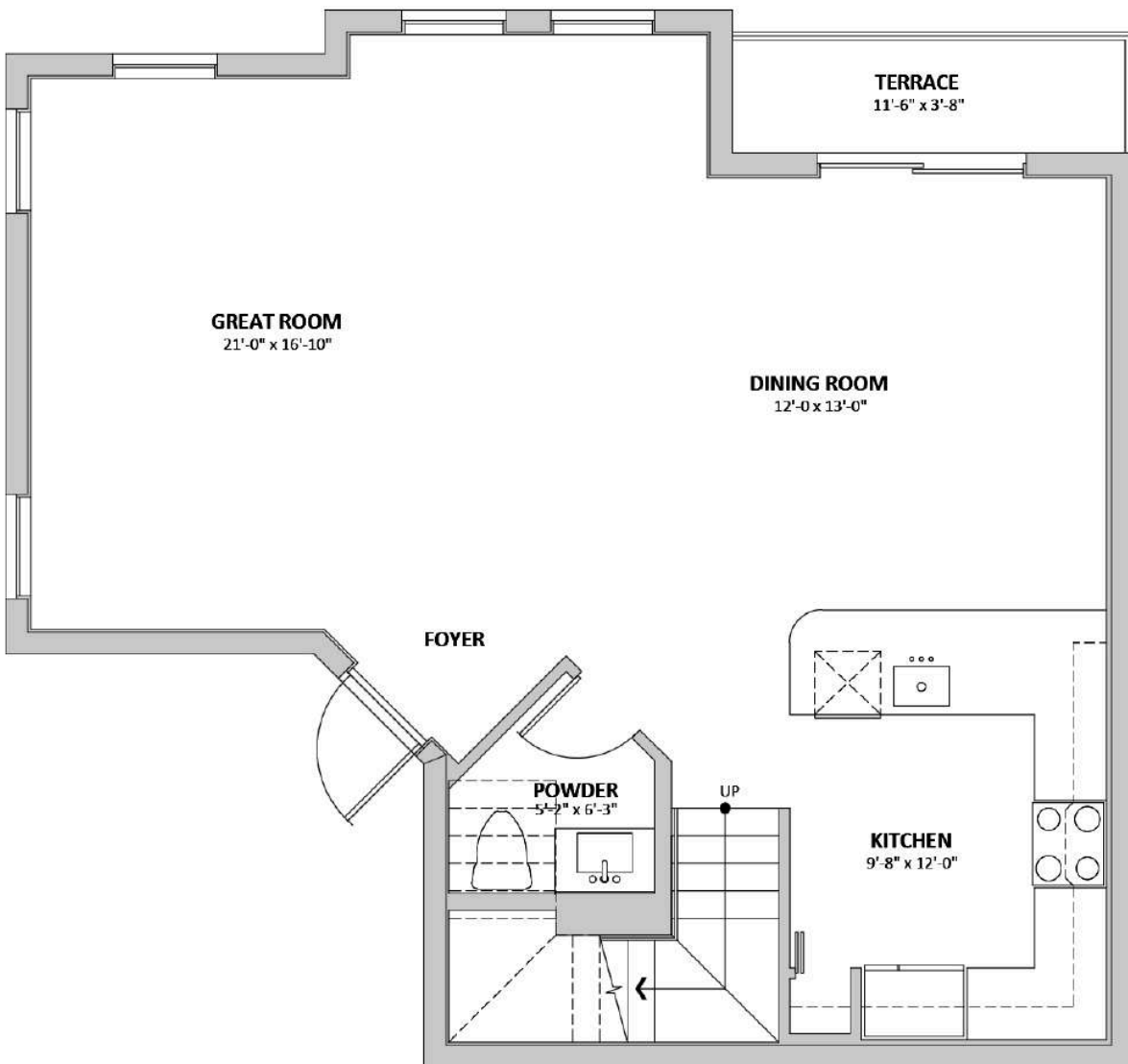
AMANDA II

Model C II

2 Story - 3 Bedrooms - 2 1/2 Bathrooms, with Great Room, Dining Room and Terrace

Total Area: 1,709 SQ.FT.
A/C Space: 1,664 SQ.FT.
Terrace: 45 SQ.FT.

First Floor



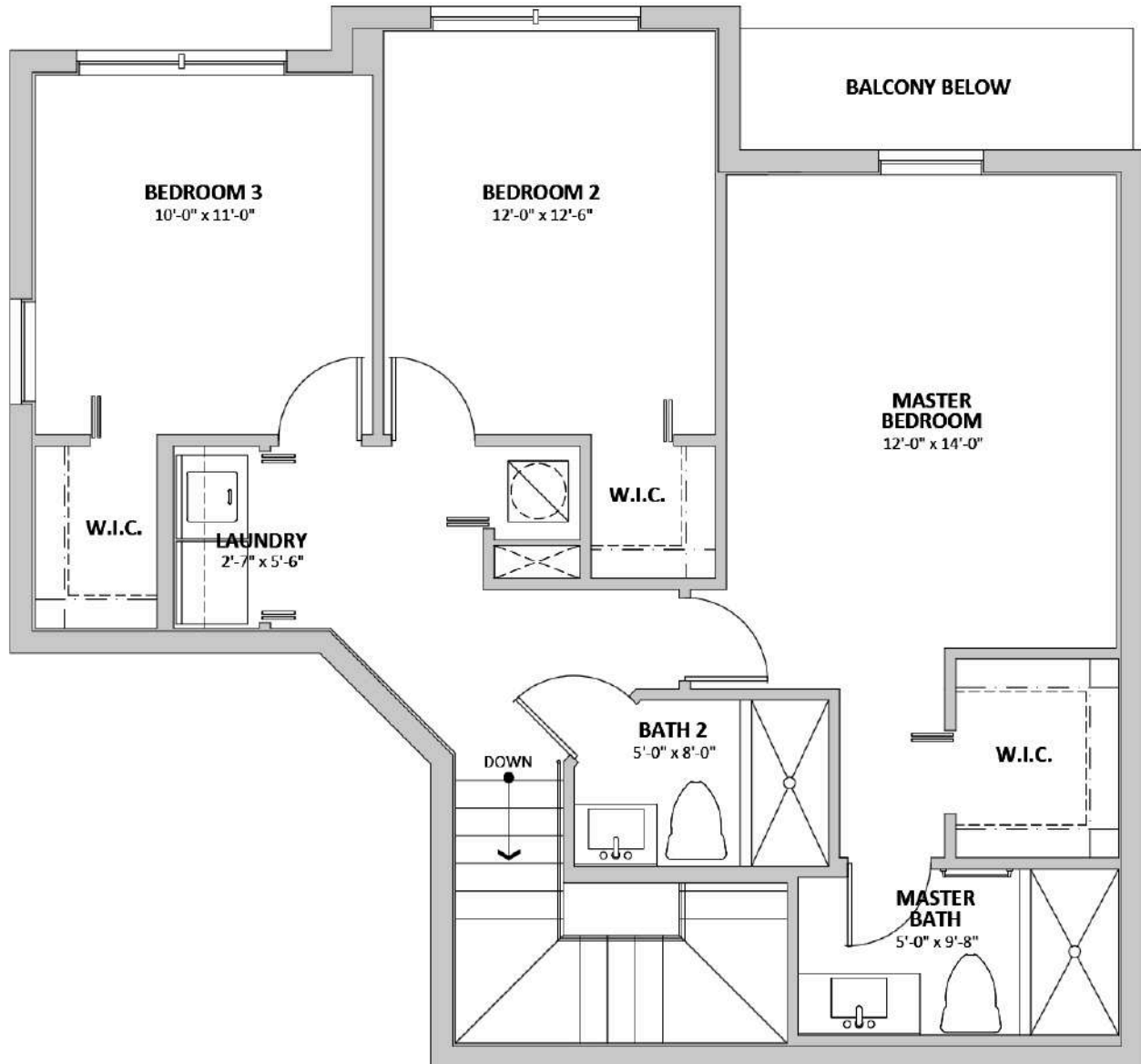
Stated dimensions are measured to the exterior boundaries of the exterior walls and the centerline of interior demising walls and in fact vary from the dimensions that would be determined by using the description and definition of the "Unit" set forth in the Declaration (which generally only includes the interior airspace between the perimeter walls and excludes interior structural components). For your reference, the area of the Unit, determined in accordance with those defined unit boundaries, is 1311, 1473, 1477, 1664, 1375, 1485, 1688 and 1262 for Models A, B, C, CII, D, E, F and G. Note that measurements of rooms set forth on this floor plan are generally taken at the greatest points of each given room (as if the room were a perfect rectangle), without regard for any cutouts. Accordingly, the area of the actual room will typically be smaller than the product obtained by multiplying the stated length times width. All dimensions are approximate and may vary with actual construction, and all floor plans and development plans are subject to change.

AMANDA II

Model C II

2 Story - 3 Bedrooms - 2 1/2 Bathrooms, with Great Room, Dining Room and Terrace

Second Floor



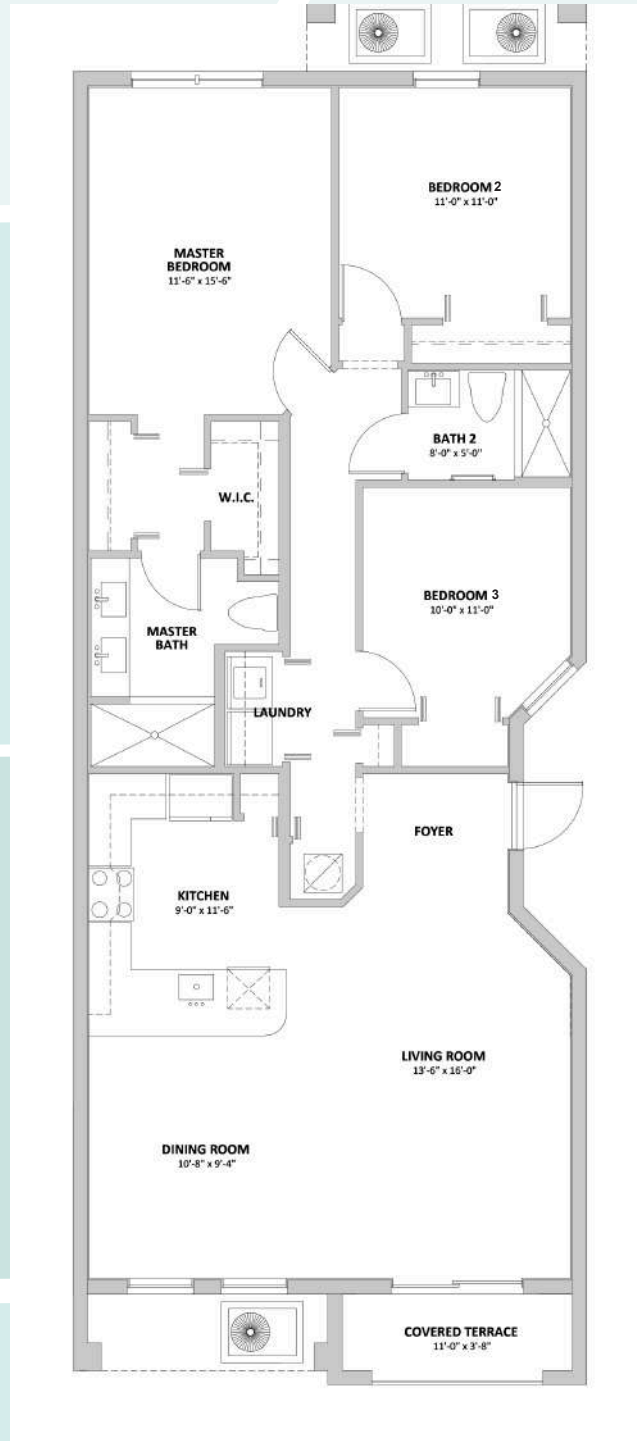
Stated dimensions are measured to the exterior boundaries of the exterior walls and the centerline of interior demising walls and in fact vary from the dimensions that would be determined by using the description and definition of the "Unit" set forth in the Declaration (which generally only includes the interior airspace between the perimeter walls and excludes interior structural components). For your reference, the area of the Unit, determined in accordance with those defined unit boundaries, is 1311, 1473, 1477, 1664, 1375, 1485, 1688 and 1262 for Models A, B, C, CII, D, E, F and G. Note that measurements of rooms set forth on this floor plan are generally taken at the greatest points of each given room (as if the room were a perfect rectangle), without regard for any cutouts. Accordingly, the area of the actual room will typically be smaller than the product obtained by multiplying the stated length times width. All dimensions are approximate and may vary with actual construction, and all floor plans and development plans are subject to change.

JEZIEL

Model D

3 Bedrooms - 2 Bathrooms, with Separate Living Room, Dining Room and Covered Terrace

Total Area: 1,428 SQ.FT.
A/C Space: 1,375 SQ.FT.
Terrace: 53 SQ.FT.



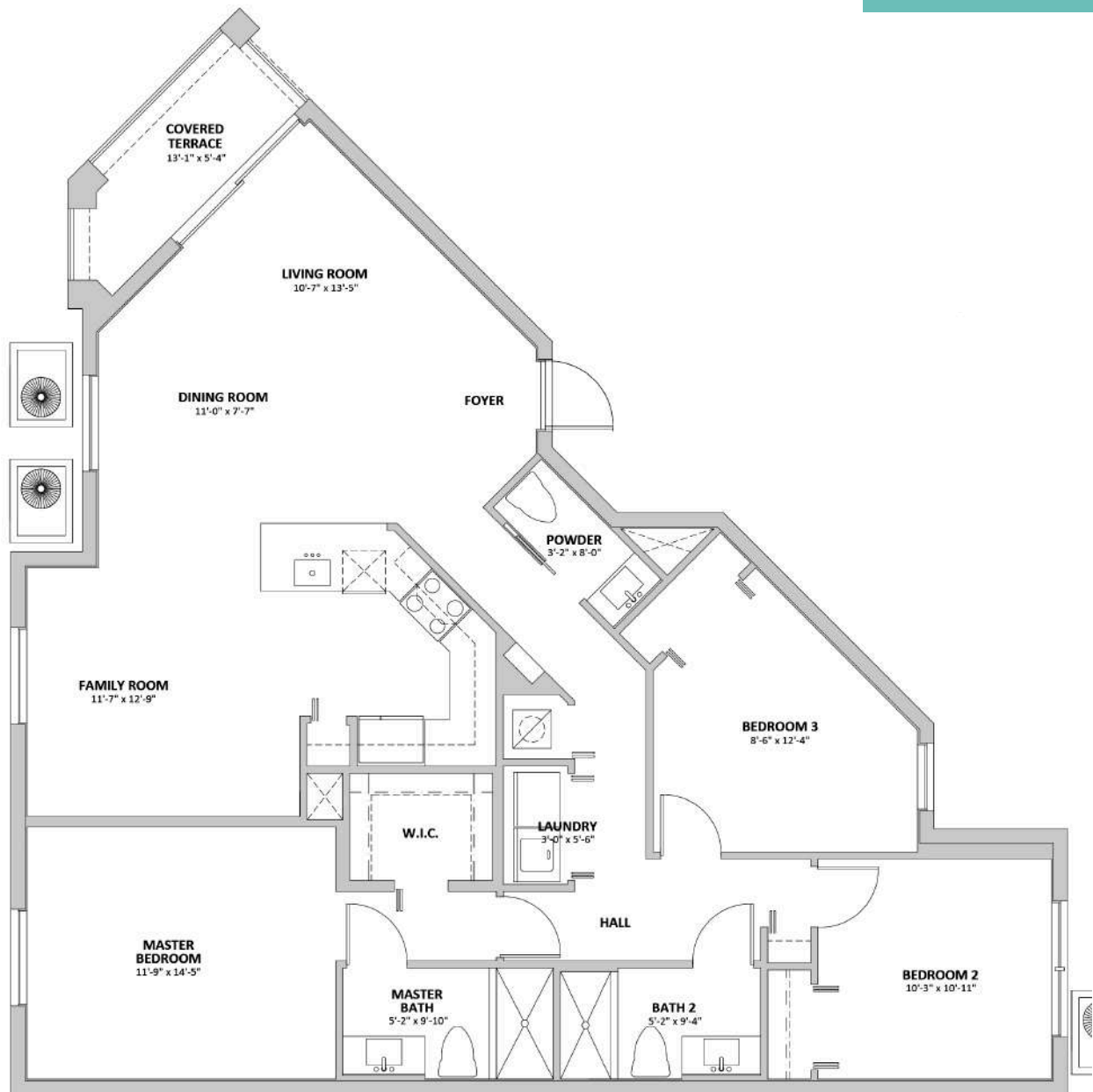
Stated dimensions are measured to the exterior boundaries of the exterior walls and the centerline of interior demising walls and in fact vary from the dimensions that would be determined by using the description and definition of the "Unit" set forth in the Declaration (which generally only includes the interior airspace between the perimeter walls and excludes interior structural components). For your reference, the area of the Unit, determined in accordance with those defined unit boundaries, is 1311, 1473, 1477, 1664, 1375, 1485, 1688 and 1262 for Models A, B, C, CII, D, E, F and G. Note that measurements of rooms set forth on this floor plan are generally taken at the greatest points of each given room (as if the room were a perfect rectangle), without regard for any cutouts. Accordingly, the area of the actual room will typically be smaller than the product obtained by multiplying the stated length times width. All dimensions are approximate and may vary with actual construction, and all floor plans and development plans are subject to change.

ASHLEY

Model E

3 Bedrooms - 2 1/2 Bathrooms, with Family Room and Covered Terrace

Total Area: 1,555 SQ.FT.
A/C Space: 1,485 SQ.FT.
Terrace: 70 SQ.FT.



Stated dimensions are measured to the exterior boundaries of the exterior walls and the centerline of interior demising walls and in fact vary from the dimensions that would be determined by using the description and definition of the "Unit" set forth in the Declaration (which generally only includes the interior airspace between the perimeter walls and excludes interior structural components). For your reference, the area of the Unit, determined in accordance with those defined unit boundaries, is 1311, 1473, 1477, 1664, 1375, 1485, 1688 and 1262 for Models A, B, C, CII, D, E, F and G. Note that measurements of rooms set forth on this floor plan are generally taken at the greatest points of each given room (as if the room were a perfect rectangle), without regard for any cutouts. Accordingly, the area of the actual room will typically be smaller than the product obtained by multiplying the stated length times width. All dimensions are approximate and may vary with actual construction, and all floor plans and development plans are subject to change.

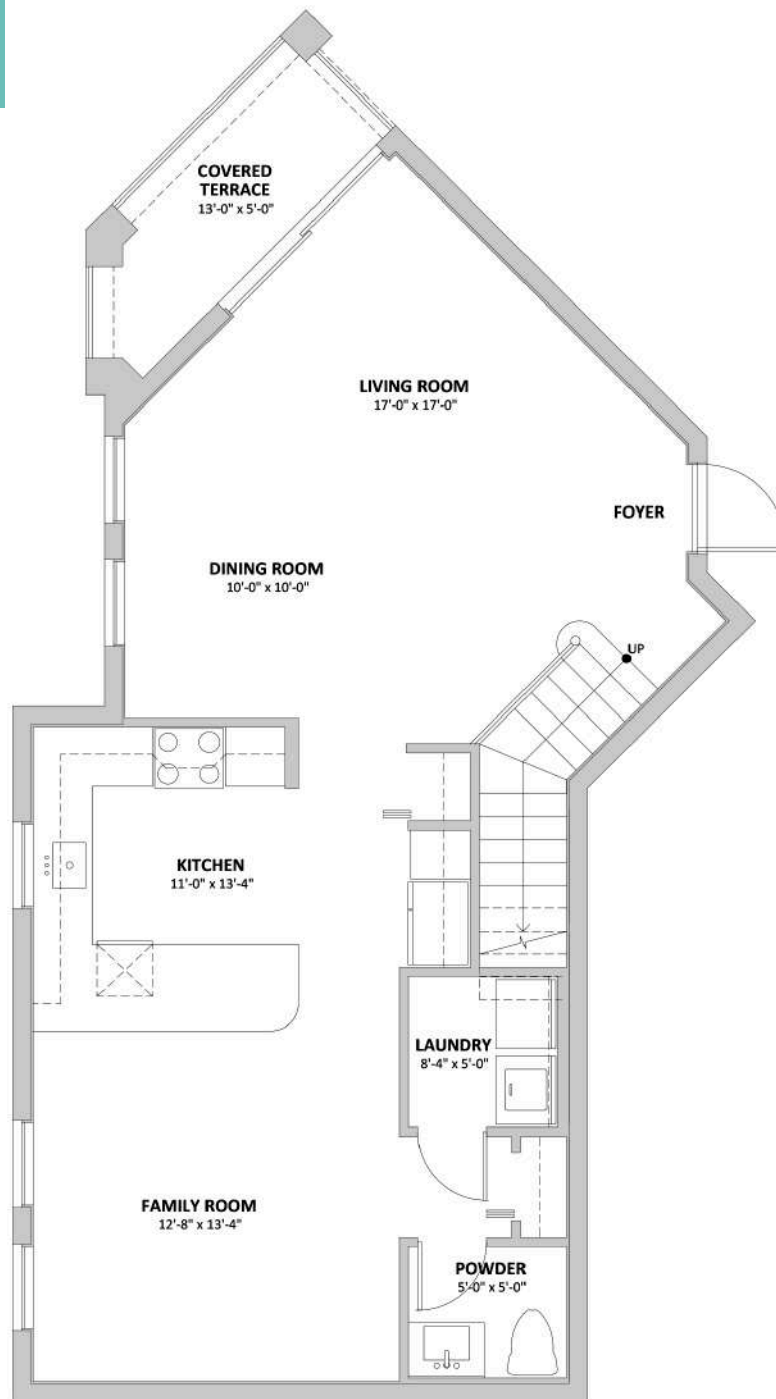
LUCA

Model F

2 Story - 3 Bedrooms - 2 1/2 Bathrooms, with Family Room, Dining Room and Covered Terrace

Total Area: 1,758 SQ.FT.
A/C Space: 1,688 SQ.FT.
Terrace: 70 SQ.FT.

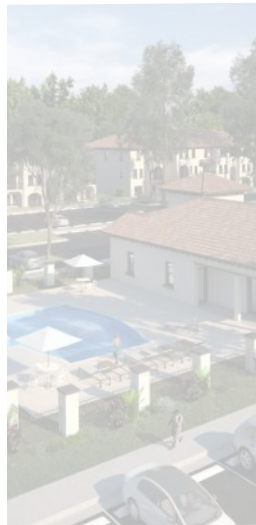
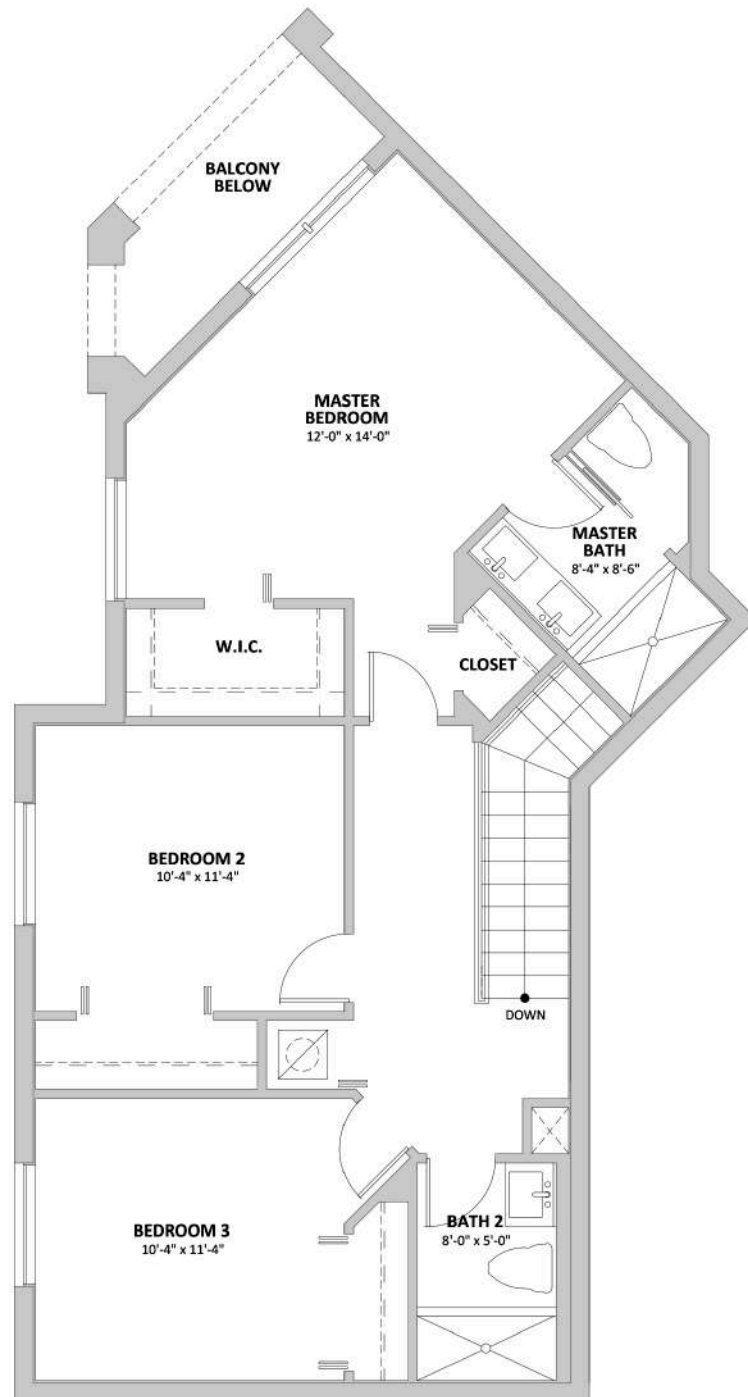
First Floor



Stated dimensions are measured to the exterior boundaries of the exterior walls and the centerline of interior demising walls and in fact vary from the dimensions that would be determined by using the description and definition of the "Unit" set forth in the Declaration (which generally only includes the interior airspace between the perimeter walls and excludes interior structural components). For your reference, the area of the Unit, determined in accordance with those defined unit boundaries, is 1311, 1473, 1477, 1664, 1375, 1485, 1688 and 1262 for Models A, B, C, CII, D, E, F and G. Note that measurements of rooms set forth on this floor plan are generally taken at the greatest points of each given room (as if the room were a perfect rectangle), without regard for any cutouts. Accordingly, the area of the actual room will typically be smaller than the product obtained by multiplying the stated length times width. All dimensions are approximate and may vary with actual construction, and all floor plans and development plans are subject to change.

2 Story - 3 Bedrooms - 2 1/2 Bathrooms, with Family Room, Dining Room and Covered Terrace

Second Floor



Stated dimensions are measured to the exterior boundaries of the exterior walls and the centerline of interior demising walls and in fact vary from the dimensions that would be determined by using the description and definition of the "Unit" set forth in the Declaration (which generally only includes the interior airspace between the perimeter walls and excludes interior structural components). For your reference, the area of the Unit, determined in accordance with those defined unit boundaries, is 1311, 1473, 1477, 1664, 1375, 1485, 1688 and 1262 for Models A, B, C, CII, D, E, F and G. Note that measurements of rooms set forth on this floor plan are generally taken at the greatest points of each given room (as if the room were a perfect rectangle), without regard for any cutouts. Accordingly, the area of the actual room will typically be smaller than the product obtained by multiplying the stated length times width. All dimensions are approximate and may vary with actual construction, and all floor plans and development plans are subject to change.

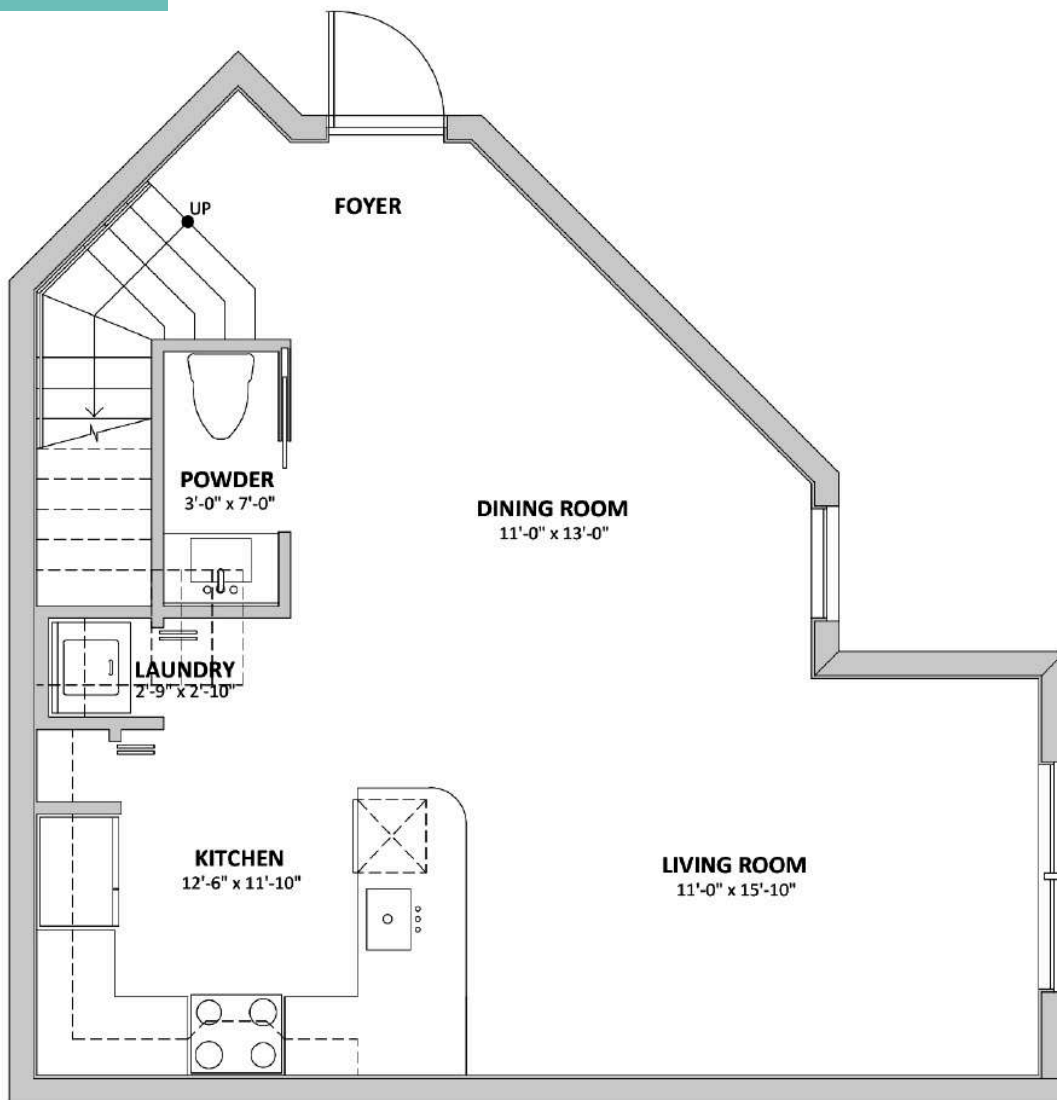
ANDRES

Model G

2 Story - 2 Bedrooms - 2 1/2 Bathrooms, with Living Room and Dining Room

Total Area: 1,262 SQ.FT.
A/C Space: 1,262 SQ.FT.

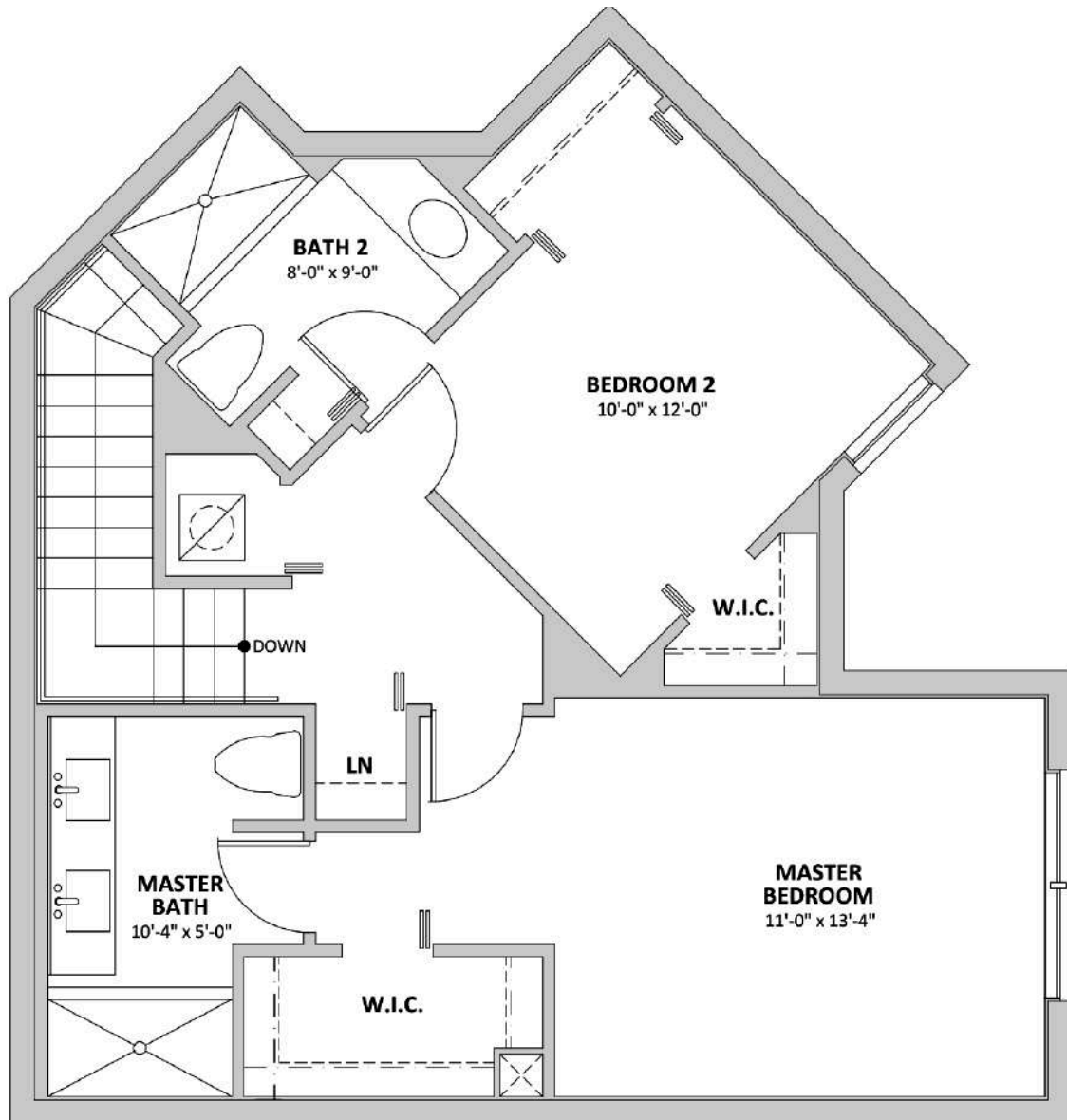
First Floor



Stated dimensions are measured to the exterior boundaries of the exterior walls and the centerline of interior demising walls and in fact vary from the dimensions that would be determined by using the description and definition of the "Unit" set forth in the Declaration (which generally only includes the interior airspace between the perimeter walls and excludes interior structural components). For your reference, the area of the Unit, determined in accordance with those defined unit boundaries, is 1311, 1473, 1477, 1664, 1375, 1485, 1688 and 1262 for Models A, B, C, CII, D, E, F and G. Note that measurements of rooms set forth on this floor plan are generally taken at the greatest points of each given room (as if the room were a perfect rectangle), without regard for any cutouts. Accordingly, the area of the actual room will typically be smaller than the product obtained by multiplying the stated length times width. All dimensions are approximate and may vary with actual construction, and all floor plans and development plans are subject to change.

2 Story - 2 Bedrooms - 2 1/2 Bathrooms, with Living Room and Dining Room

Second Floor



Stated dimensions are measured to the exterior boundaries of the exterior walls and the centerline of interior demising walls and in fact vary from the dimensions that would be determined by using the description and definition of the "Unit" set forth in the Declaration (which generally only includes the interior airspace between the perimeter walls and excludes interior structural components). For your reference, the area of the Unit, determined in accordance with those defined unit boundaries, is 1311, 1473, 1477, 1664, 1375, 1485, 1688 and 1262 for Models A, B, C, CII, D, E, F and G. Note that measurements of rooms set forth on this floor plan are generally taken at the greatest points of each given room (as if the room were a perfect rectangle), without regard for any cutouts. Accordingly, the area of the actual room will typically be smaller than the product obtained by multiplying the stated length times width. All dimensions are approximate and may vary with actual construction, and all floor plans and development plans are subject to change.