

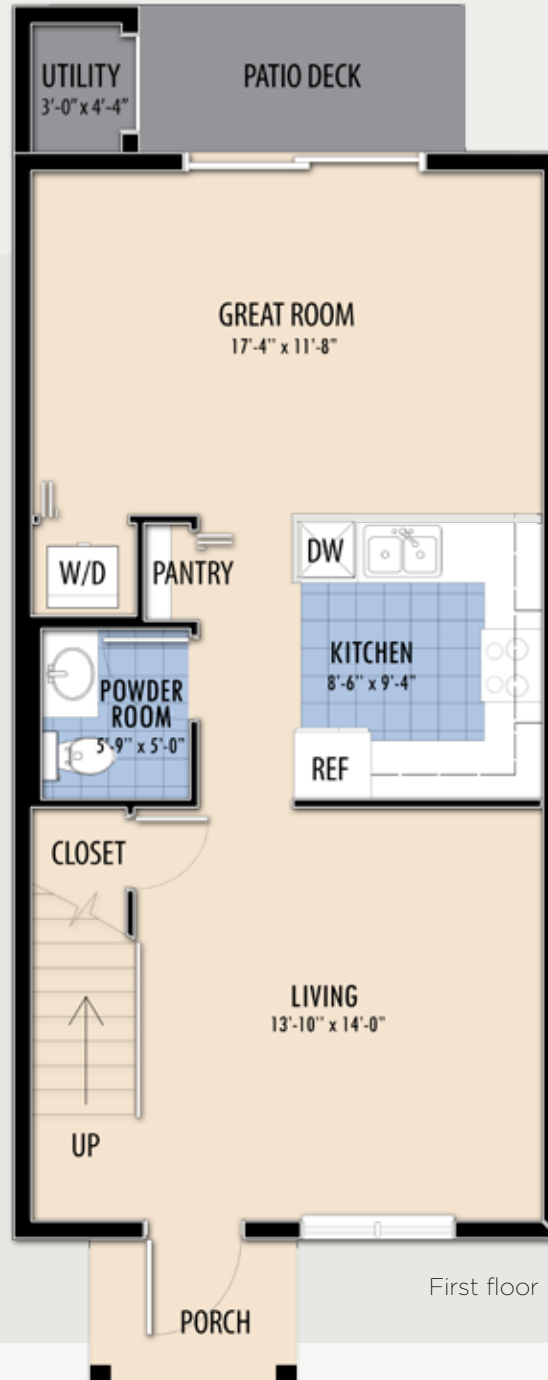
# BANYAN

2 bedroom / 2.5 bath

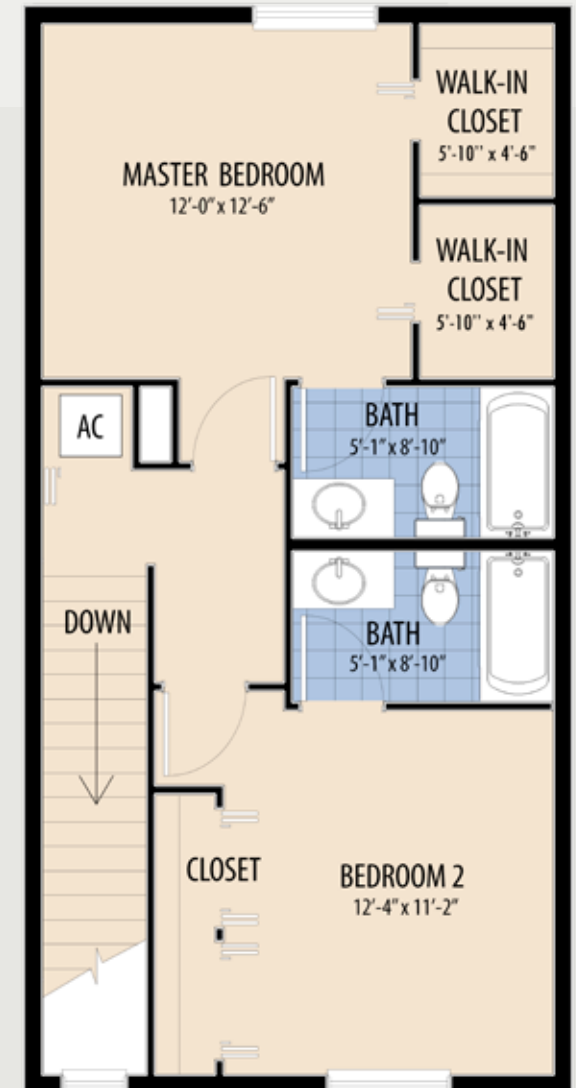
## Area Calculations

Ground Floor AC	666.00 sq. ft.
Second Floor AC	606.50 sq. ft.
Total AC Area	1,272.50 sq. ft.
Utility Room	20.00 sq. ft.
Porch	35.00 sq. ft.

**Gross Area 1,327.50 sq. ft.**



First floor



Second floor

# CYPRESS

3 bedroom / 2.5 bath



## Area Calculations

Ground Floor AC	736.67 sq. ft.
Second Floor AC	702.80 sq. ft.
Total AC Area	1,439.47 sq. ft.
Utility Room	20.00 sq. ft.
Porch	40.67 sq. ft.
<b>Gross Area</b>	<b>1,500.14 sq. ft.</b>

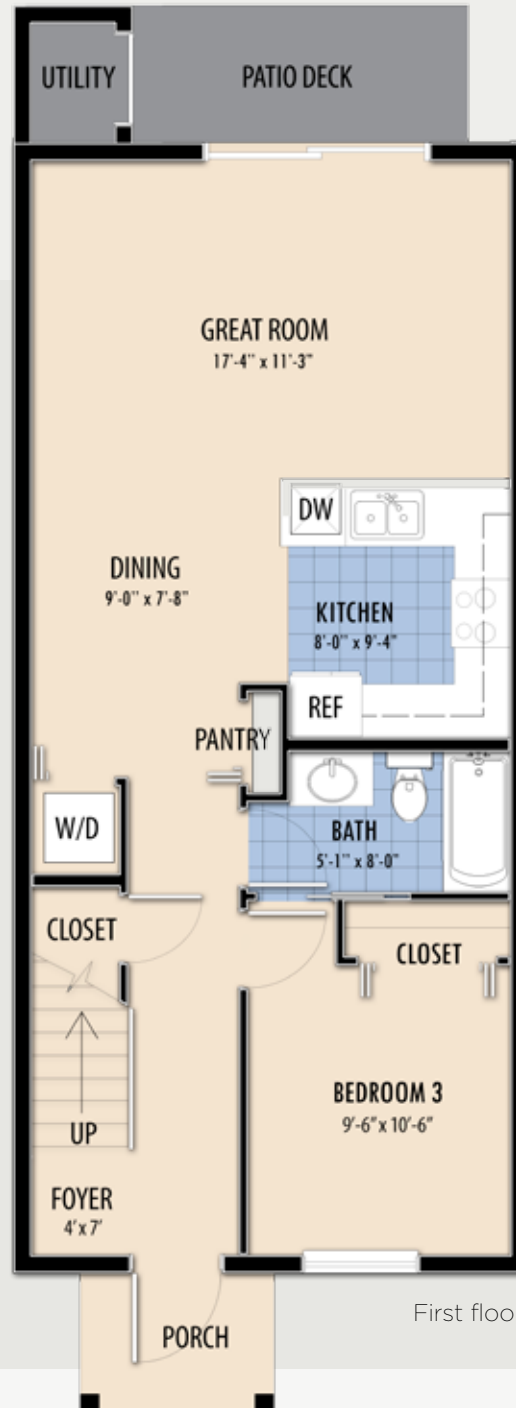
# PINE

3 bedroom / 3 bath

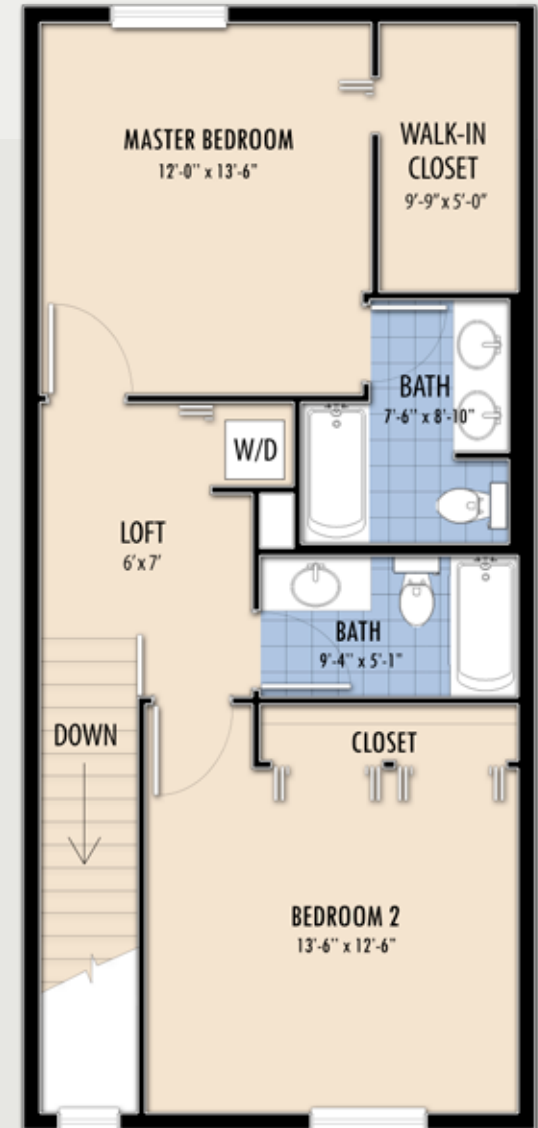
## Area Calculations

Ground Floor AC 738.00 sq. ft.  
Second Floor AC 680.25 sq. ft.  
Total AC Area 1,418.25 sq. ft.  
Utility Room 20.00 sq. ft.  
Porch 35.00 sq. ft.

**Gross Area 1,473.25 sq. ft.**



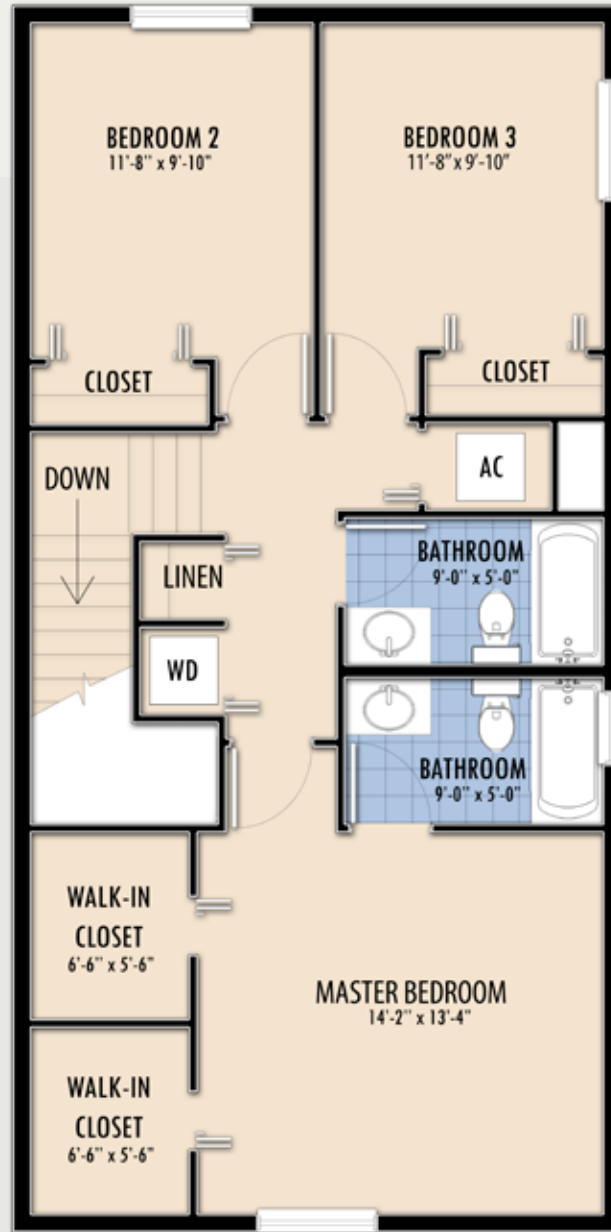
First floor



Second floor



First floor



Second floor

# WILLOW

4 bedroom / 3 bath

## Area Calculations

Ground Floor AC	868.00 sq. ft.
Second Floor AC	841.89 sq. ft.
Total AC Area	1,709.89 sq. ft.
Utility Room	20.00 sq. ft.
Porch	24.00 sq. ft.
<b>Gross Area</b>	<b>1,753.89 sq. ft.</b>