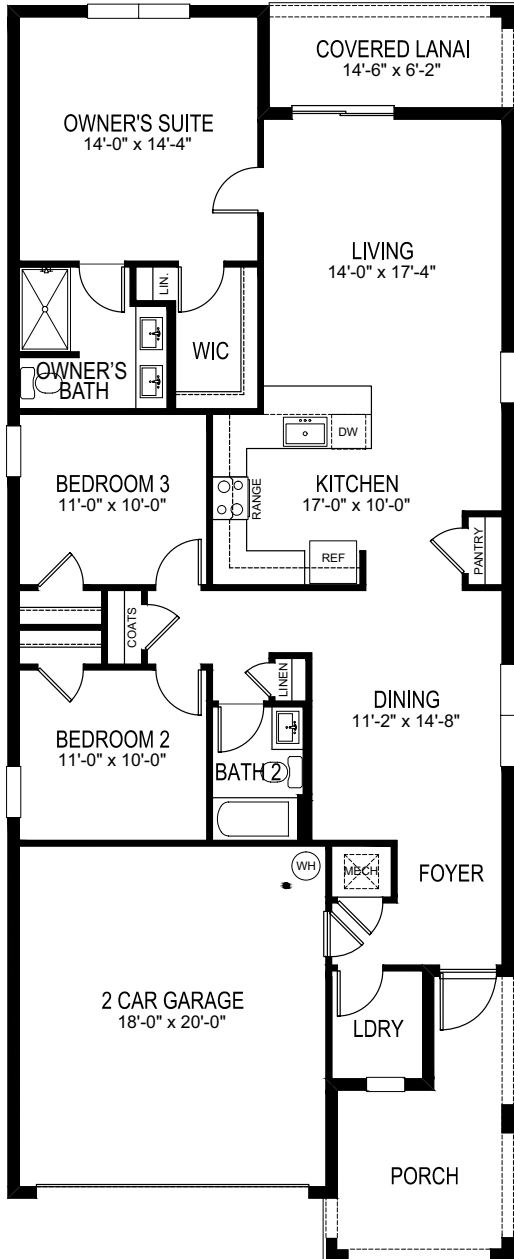


## ALLEX

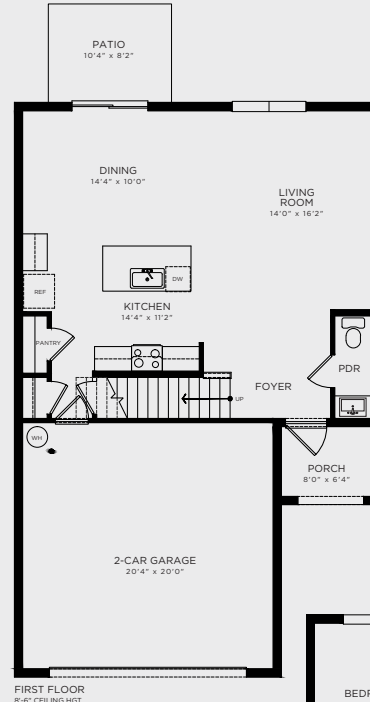
3 Bedrooms, 2 Bathrooms, 2-Car Garage



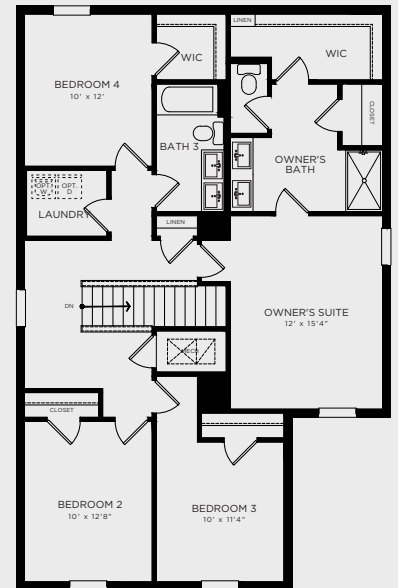
<b>Total A/C Sq. Ft.</b> .....	<b>1,504</b>
Covered Porch .....	31
Covered Lanai.....	86
2-Car Garage.....	390
<b>Total Sq. Ft.</b> .....	<b>2,011</b>

## AISLE

4 Bedrooms, 2.5 Bathrooms, 2-Car Garage



FIRST FLOOR  
8'-6" CEILING HGT.

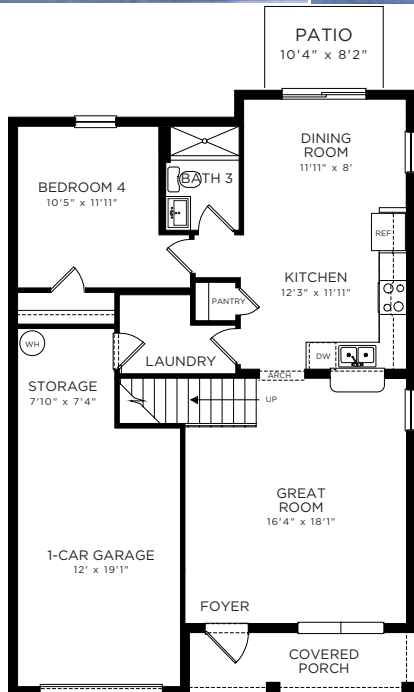


SECOND FLOOR  
8'-8" CEILING HGT.

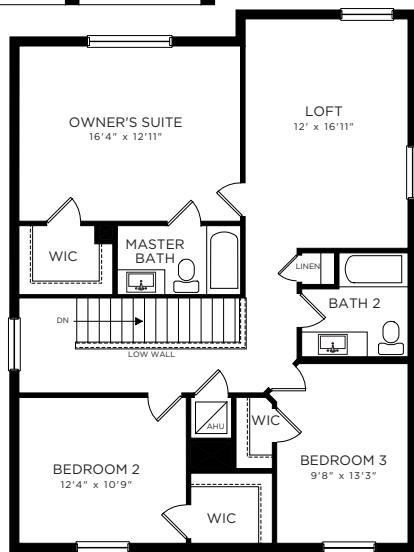
1st Floor A/C Sq. Ft. ....	774
2nd Floor A/C Sq. Ft. ....	1,272
<b>Total A/C Sq. Ft.</b> .....	<b>2,046</b>
Covered Porch.....	51
2-Car Garage .....	448
<b>Total Sq. Ft.</b> .....	<b>2,545</b>

## SAPOLE

4 Bedrooms, 3 Bathrooms, Loft, 1-Car Garage



FIRST FLOOR  
8'6" CEILING HGT.

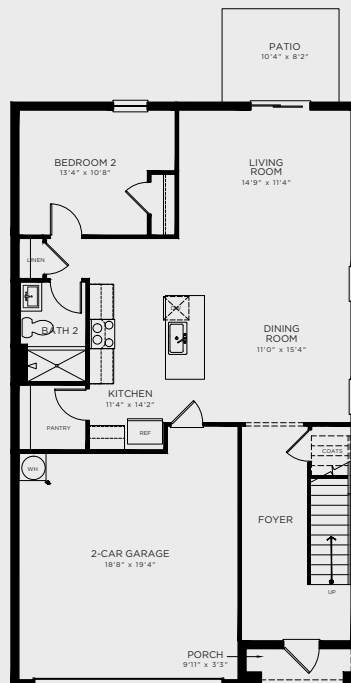


SECOND FLOOR  
8'8" CEILING HGT.

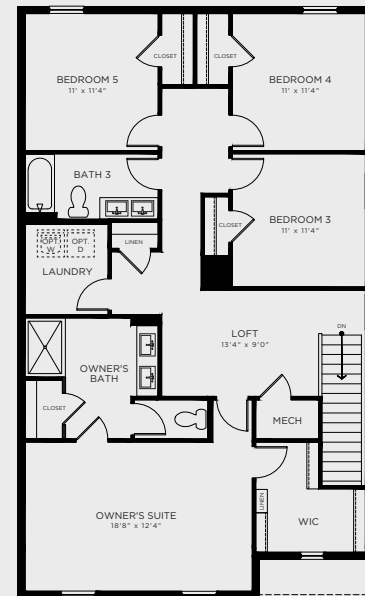
1st Floor A/C Sq. Ft. ....918  
 2nd Floor A/C Sq. Ft. .... 1,167  
**Total A/C Sq. Ft. ....2,085**  
 Covered Porch ..... 78  
 Garage ..... 311  
**Total Sq. Ft. ....2,474**

## ROBIE

5 Bedrooms, 3 Bathrooms, Loft, 2-Car Garage



FIRST FLOOR  
8'4" CEILING HGT.



SECOND FLOOR  
9'8" CEILING HGT.

1st Floor A/C Sq. Ft. ....1048  
 2nd Floor A/C Sq. Ft. .... 1451  
**Total A/C Sq. Ft. .... 2,499**  
 Covered Porch ..... 32  
 2-Car Garage ..... 403  
**Total Sq. Ft. ....2,934**