

# SOUTHERN P INT

*The developer reserves the right, as deemed necessary by availability, architect or law, to modify floor plans, exteriors, specifications, features and product types without prior notice or obligations. All plans and elevation renderings are artist's conceptions and are not necessarily to scale. All square footage is approximate. Landscape may vary as to maturity and number.*

# SOUTHERN POINT



# SOUTHERN POINT



# SOUTHERN POINT

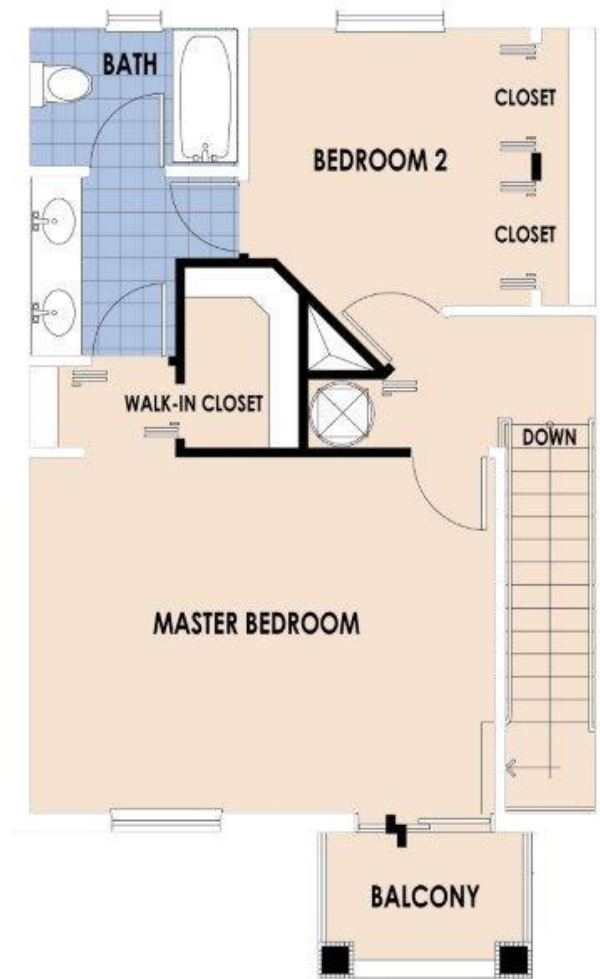


## SITMAP

The developer reserves the right, as deemed necessary by availability, architect or law, to modify floor plans, exteriors, specifications, features and product types without prior notice or obligations. All plans and elevation renderings are artist's conceptions and are not necessarily to scale. All square footage is approximate. Landscape may vary as to maturity and number.

# SOUTHERN POINT

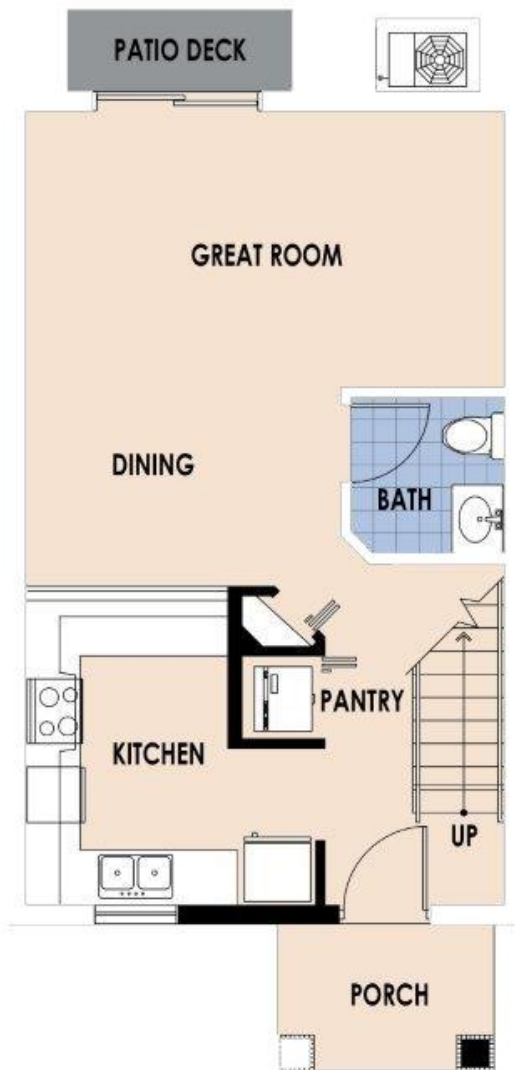
## Model A 3 Bedroom 2 Baths



**Total A/C - 1,232 sq ft**

# SOUTHERN POINT

## Model B 2 Bedroom 1.5 Baths



**Total A/C - 1,041 sq ft**

# About SOUTHERN POINT



## COMMUNITY FEATURES

- \* Lush Landscaping Throughout your Community
- \* Street Light
- \* Conveniently Located with immediate Access to Shopping Centers, Baptist Hospital, Florida Keys Gate Outlet Mall, Miami Dade Community College, the Florida Turnpike, US-1 and only minutes away from the Florida Keys.



## EXTERIOR FEATURE

- \* Exterior Concrete Block and Stucco Wall Construction
- \* Decorator-Selected Barrel Tile
- \* Covered Porches
- \* Two Private Parking Spaces Located at the Front of your Home
- \* Architecturally Accented Front Entry Door
- \* Decorator-Selected Hardware with Dead Bolt on the Front Door
- \* Impact Windows
- \* Screens on all Windows and Sliding Glass Door
- \* Decorator-Selected Exterior Lighting Fixtures
- \* Front and Rear Water Proof (GFI) Electrical Outlets
- \* Hose Bibs at Front and Rear of your Home
- \* Private Rear Patios Fully Fenced with 6-Foot-High Wood

## INTERIOR FEATURES

- \* Waterproof Laminate 1st floor living areas & Bathroom
- \* Knockdown Texture Walls Throughout your Home
- \* High-Efficiency Center Air Conditional and Heating With Connected Thermostat
- \* High-Efficiency Insulation
- \* Plush Stain-Resistant Wall-to-Wall Carpet
- \* Bi-Fold Doors
- \* Vinyl-Clad Ventilated Closet Shelving
- \* Baseboards and Door Trim Throughout
- \* Decorator-Selected Interior Door Hardware
- \* Rocker-Style Light Switches Throughout
- \* Decorator-Selected Lighting Fixtures
- \* Pre-Wired for Cable TV in Your Family Room and All Your Bedrooms
- \* Category 5e Structured Wiring for Phone Throughout your Home
- \* RG6 Shielded Coaxial Television Cable Throughout your Home
- \* Smoke and Carbon Monoxide Detectors Throughout the Living Areas of Your Home

## KITCHEN FEATURE

- \* Waterproof Laminate Flooring
- \* Easy-Care Mica Countertops with Backsplash
- \* Double Compartment Stainless Steel Sink with Decorator-Selected Single-Lever Faucet
- \* Appliance Package Featuring
- \* 18 CF Top Freezer Refrigerator
- \* 30-Inch Free Standing Electric Range
- \* Over the Range Built-In Combination Microwave and Circulating Exhaust Hood Fan
- \* Multi-Cycle Dishwasher
- \* Garbage Disposal

## BATH FEATURES

- \* Waterproof Laminate Flooring
- \* porcelain 12x24 Tub Walls
- \* Decorator Easy-Care Mica Tops
- \* Decorator-Selector Lighting
- \* Convenient Single-Lever Faucets
- \* Exhaust Fans