

Presidential Estates Collection

### Bliss

1-story

4 Bedrooms · 3.5 Baths · Family Room  
Covered Terrace · 2-Car Garage

	SQ FT	M <sup>2</sup>
A/C Area	2,530	235.0
Covered Entry	65	6.0
Covered Terrace	180	16.7
Garage	406	37.7
<b>Total</b>	<b>3,181</b>	<b>295.4</b>



## Brickell REALTY GROUP

2071 NW 112th Avenue, Miami, FL 33172

[www.brickell-realty.com/Satori.html](http://www.brickell-realty.com/Satori.html)

Oral representation cannot be relied upon as correctly stating representations of the developer. Pictures of homes and condos may not reflect the final products which may vary. Dimensions, specifications, improvements, rendering, plans, land uses, materials, amenities, prices, and availability are subject to change at the developer's discretion without notice.

Stated dimensions are approximate and measured to the exterior boundaries of the exterior walls and the centerline of interior demising walls which in fact vary from the dimensions that would be determined by using the description and definition of the "Unit" set forth in the Declaration (which generally only includes the interior airspace between the perimeter walls and excludes interior structural components).



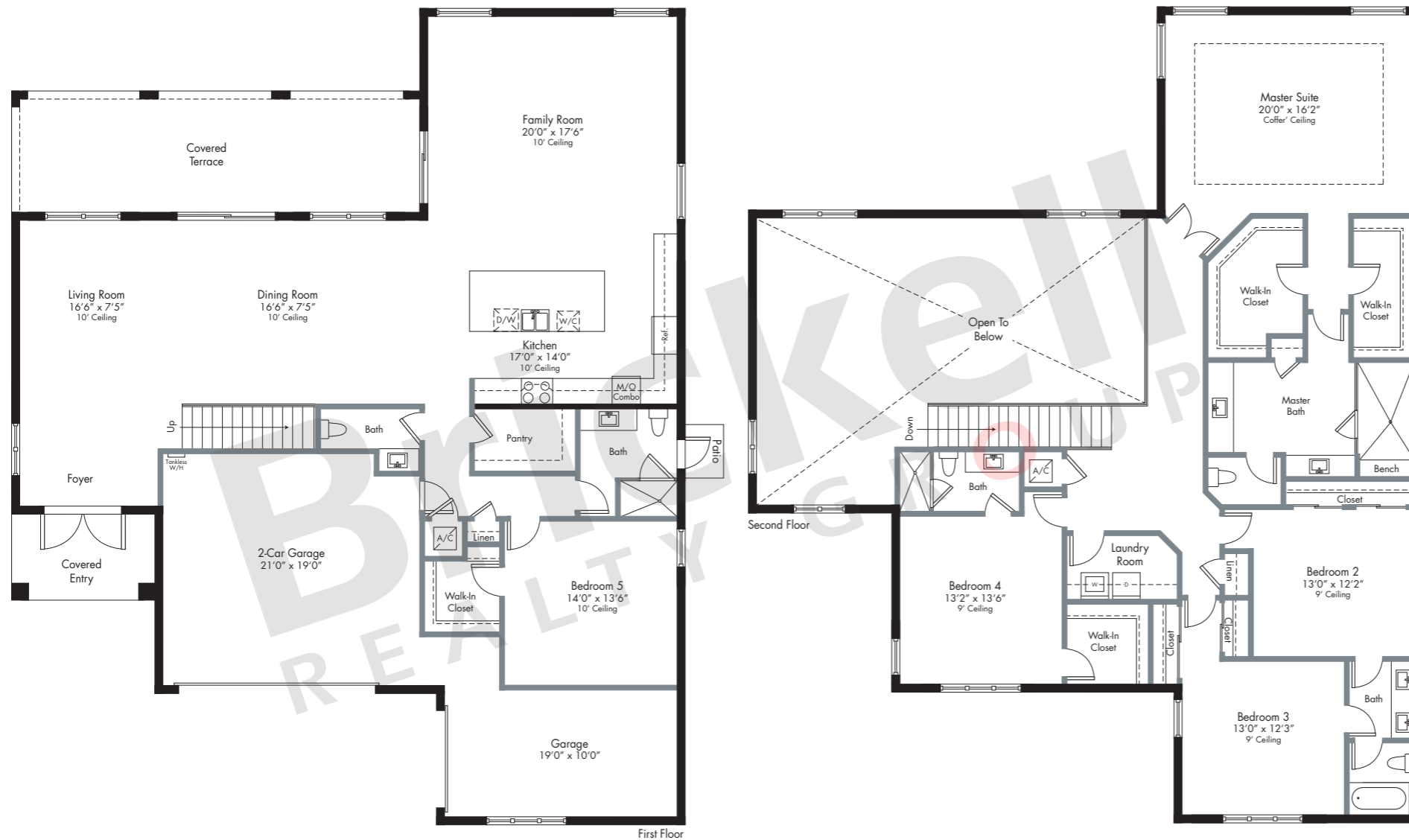
Presidential Estates Collection

## Darma

2-story

5 Bedrooms · 4.5 Baths · Family Room  
Covered Terrace · 3-Car Garage

	SQ FT	M <sup>2</sup>
A/C Area	3,849	357.6
Covered Entry	82	7.6
Covered Terrace	332	30.8
Garage	669	62.2
<b>Total</b>	<b>4,932</b>	<b>458.2</b>



# Brickell

REALTY GROUP

2071 NW 112th Avenue, Miami, FL 33172

[www.brickell-realty.com/Satori.html](http://www.brickell-realty.com/Satori.html)

Oral representation cannot be relied upon as correctly stating representations of the developer. Pictures of homes and condos may not reflect the final products which may vary. Dimensions, specifications, improvements, rendering, plans, land uses, materials, amenities, prices, and availability are subject to change at the developer's discretion without notice.

Stated dimensions are approximate and measured to the exterior boundaries of the exterior walls and the centerline of interior demising walls which in fact vary from the dimensions that would be determined by using the description and definition of the "Unit" set forth in the Declaration (which generally only includes the interior airspace between the perimeter walls and excludes interior structural components).



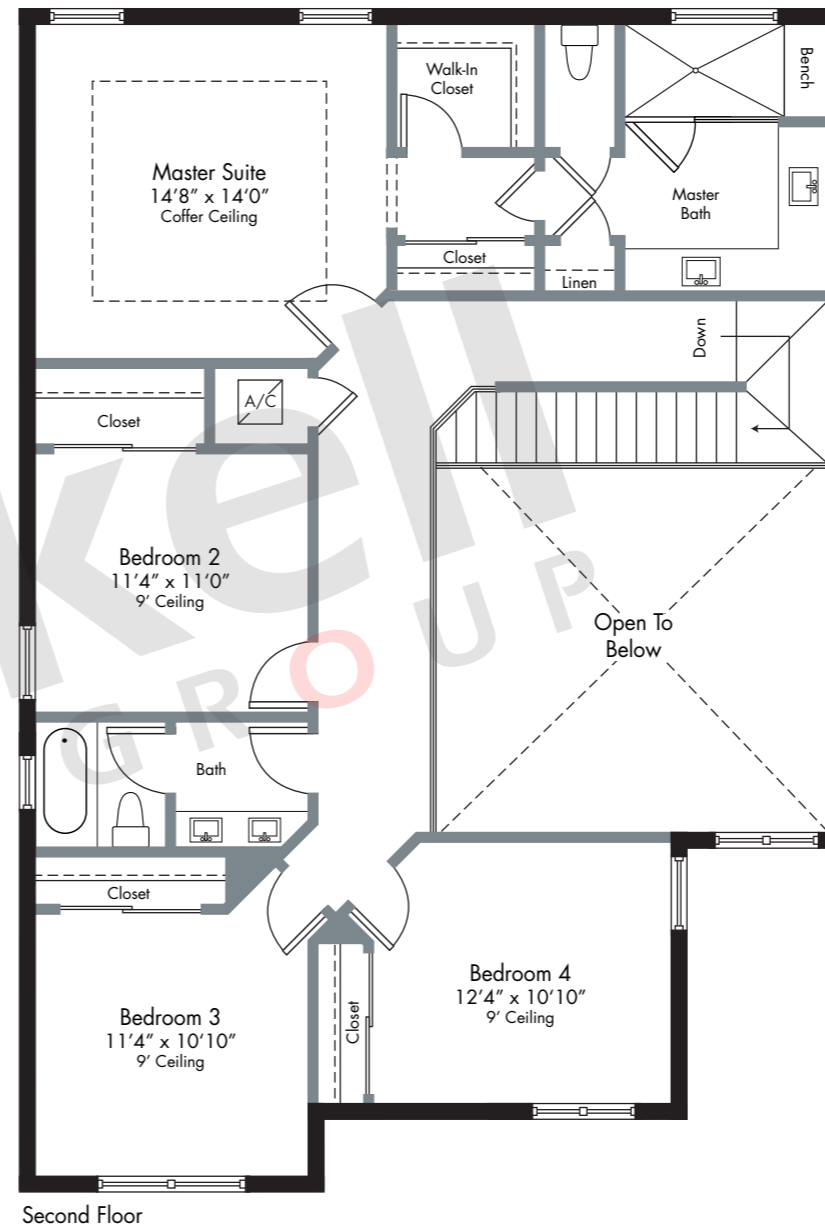
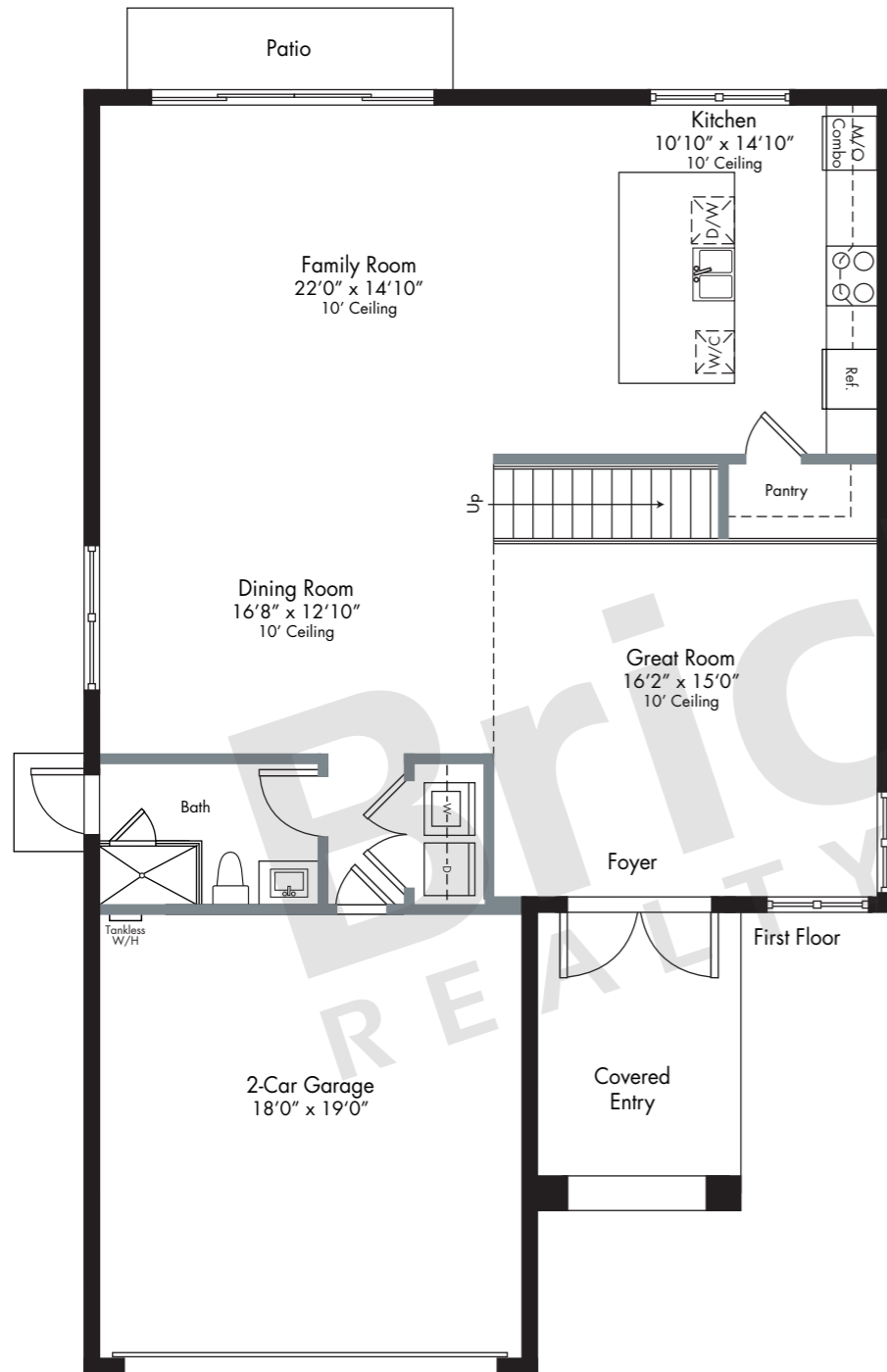
Executives Estates Collection

## Nirvana

2-story

4 Bedrooms · 3 Baths · Family Room  
2-Car Garage

	SQ FT	M <sup>2</sup>
A/C Area	2,531	235.1
Covered Entry	110	10.2
Garage	380	35.3
<b>Total</b>	<b>3,021</b>	<b>280.6</b>



# Brickell REALTY GROUP

2071 NW 112th Avenue, Miami, FL 33172

[www.brickell-realty.com/Satori.html](http://www.brickell-realty.com/Satori.html)

Oral representation cannot be relied upon as correctly stating representations of the developer. Pictures of homes and condos may not reflect the final products which may vary. Dimensions, specifications, improvements, rendering, plans, land uses, materials, amenities, prices, and availability are subject to change at the developer's discretion without notice.

Stated dimensions are approximate and measured to the exterior boundaries of the exterior walls and the centerline of interior demising walls which in fact vary from the dimensions that would be determined by using the description and definition of the "Unit" set forth in the Declaration (which generally only includes the interior airspace between the perimeter walls and excludes interior structural components).



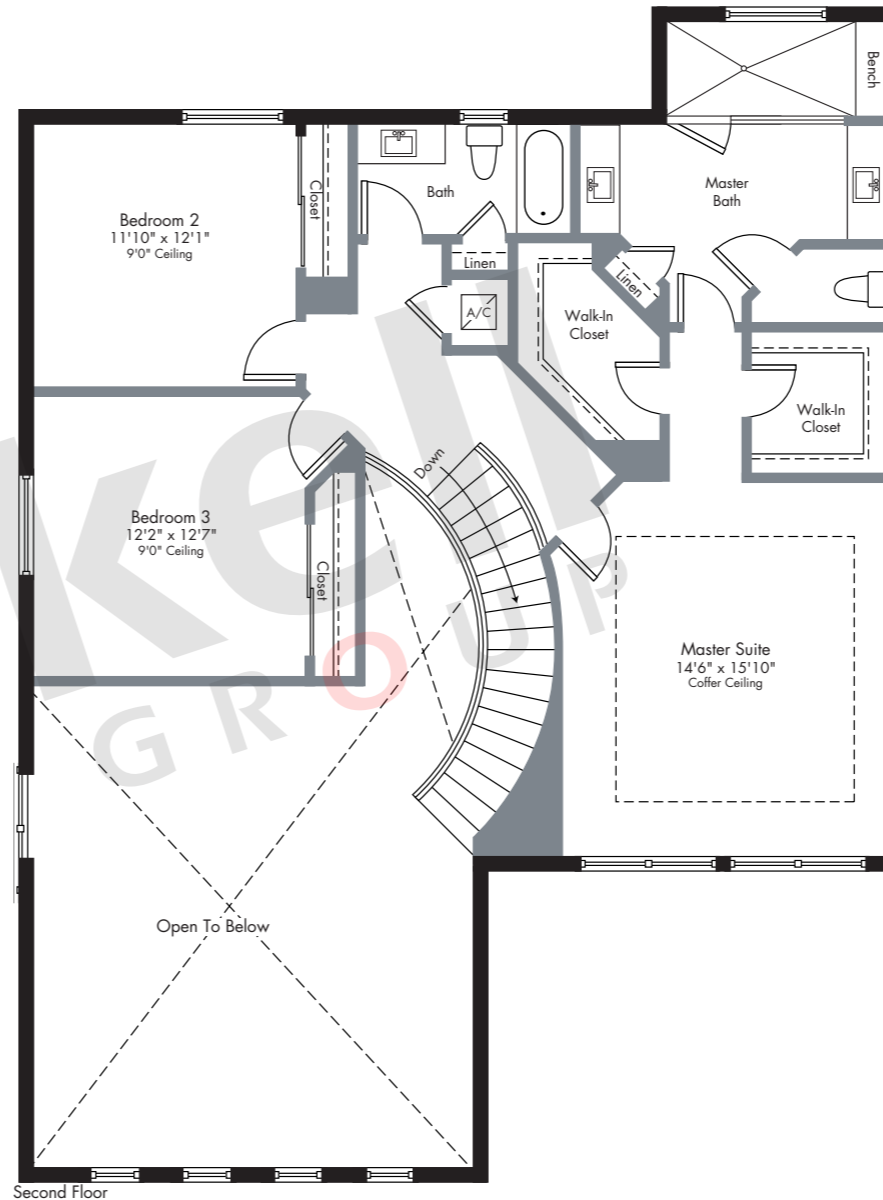
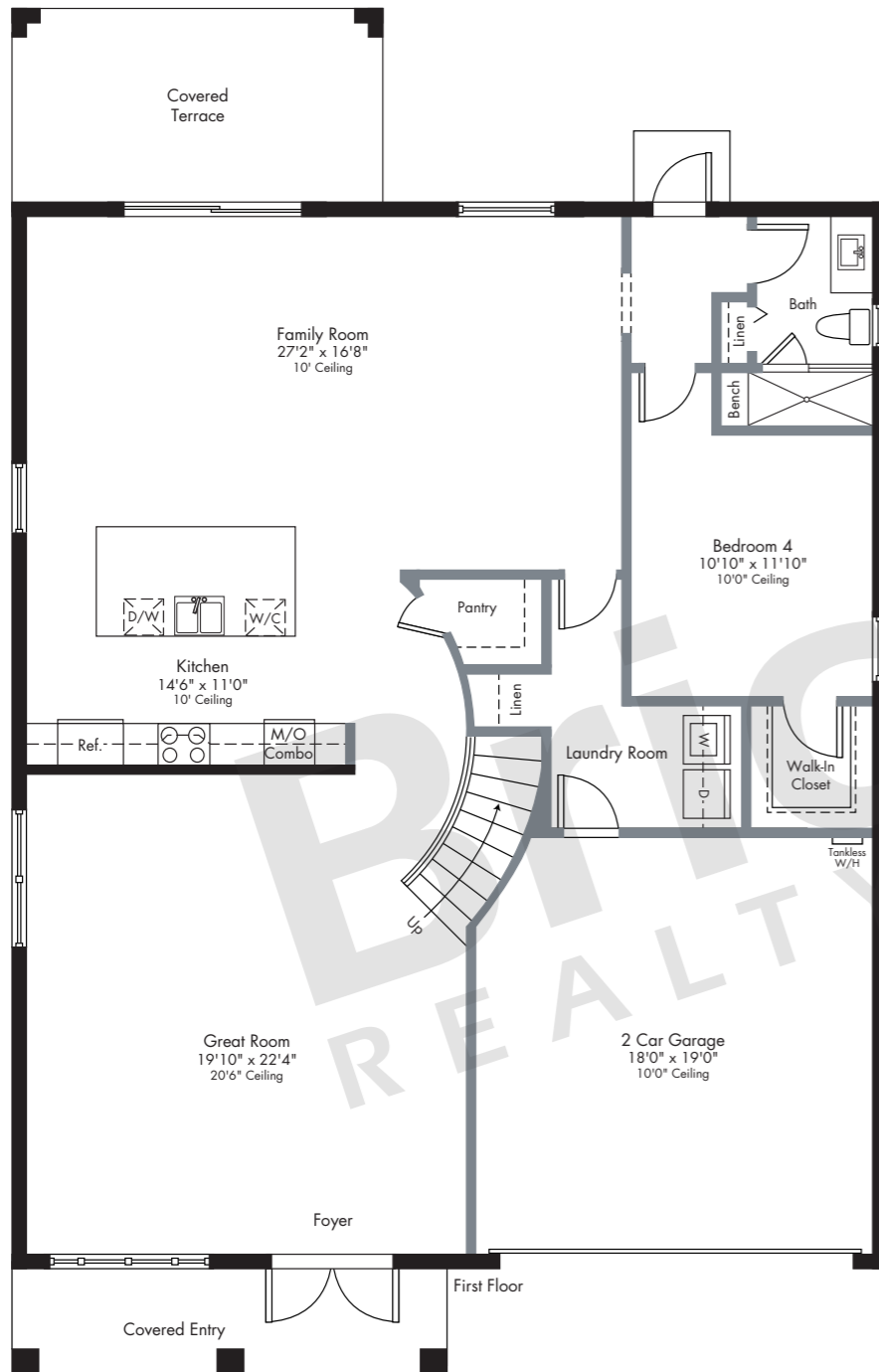
Executives Estates Collection

## Oasis

2-story

4 Bedrooms · 3 Baths · Family Room  
Covered Terrace · 2-Car Garage

	SQ FT	M <sup>2</sup>
A/C Area	2,815	261.5
Covered Entry	100	9.3
Covered Terrace	162	15.0
Garage	362	33.6
<b>Total</b>	<b>3,439</b>	<b>319.4</b>



# Brickell REALTY GROUP

2071 NW 112th Avenue, Miami, FL 33172

[www.brickell-realty.com/Satori.html](http://www.brickell-realty.com/Satori.html)

Oral representation cannot be relied upon as correctly stating representations of the developer. Pictures of homes and condos may not reflect the final products which may vary. Dimensions, specifications, improvements, rendering, plans, land uses, materials, amenities, prices, and availability are subject to change at the developer's discretion without notice.

Stated dimensions are approximate and measured to the exterior boundaries of the exterior walls and the centerline of interior demising walls which in fact vary from the dimensions that would be determined by using the description and definition of the "Unit" set forth in the Declaration (which generally only includes the interior airspace between the perimeter walls and excludes interior structural components).



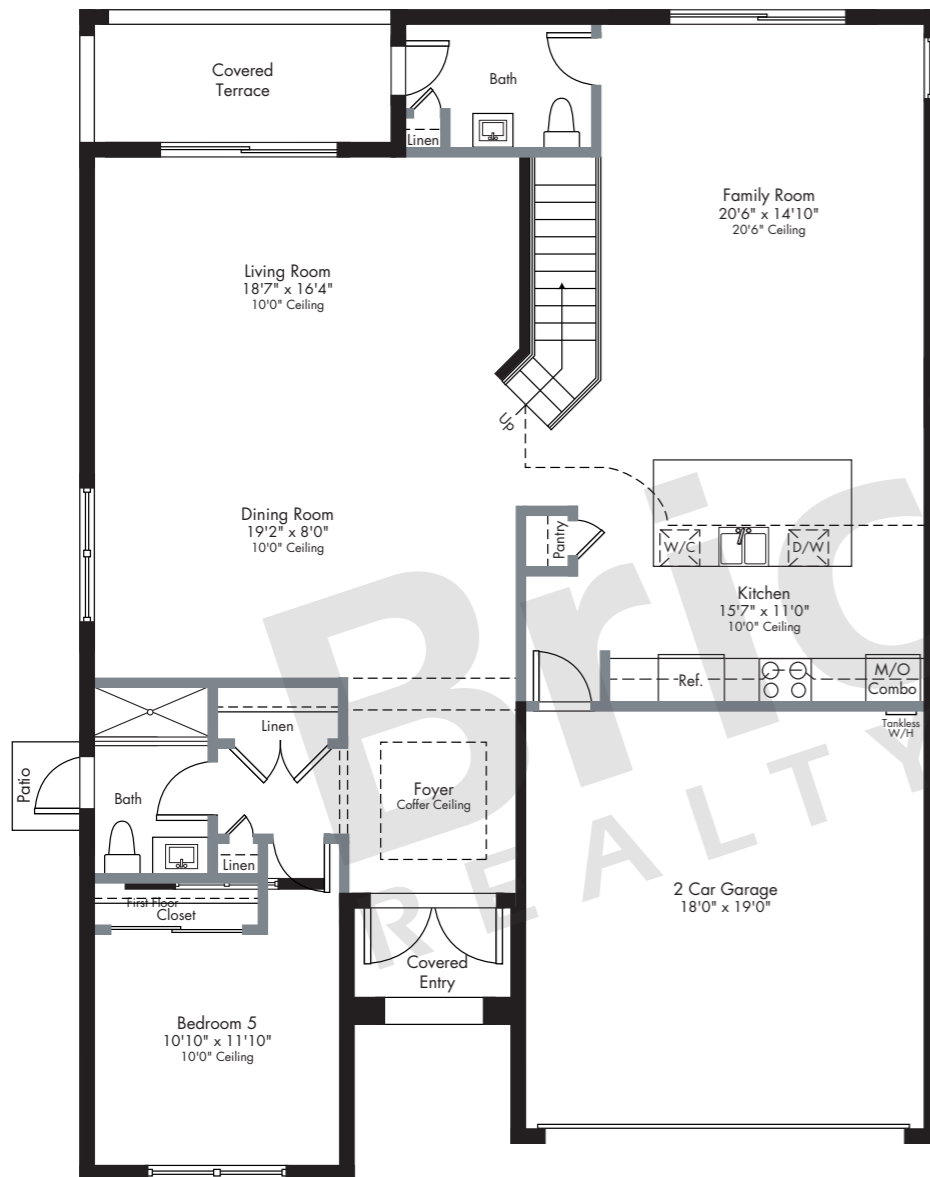
Executives Estates Collection

## Retreat

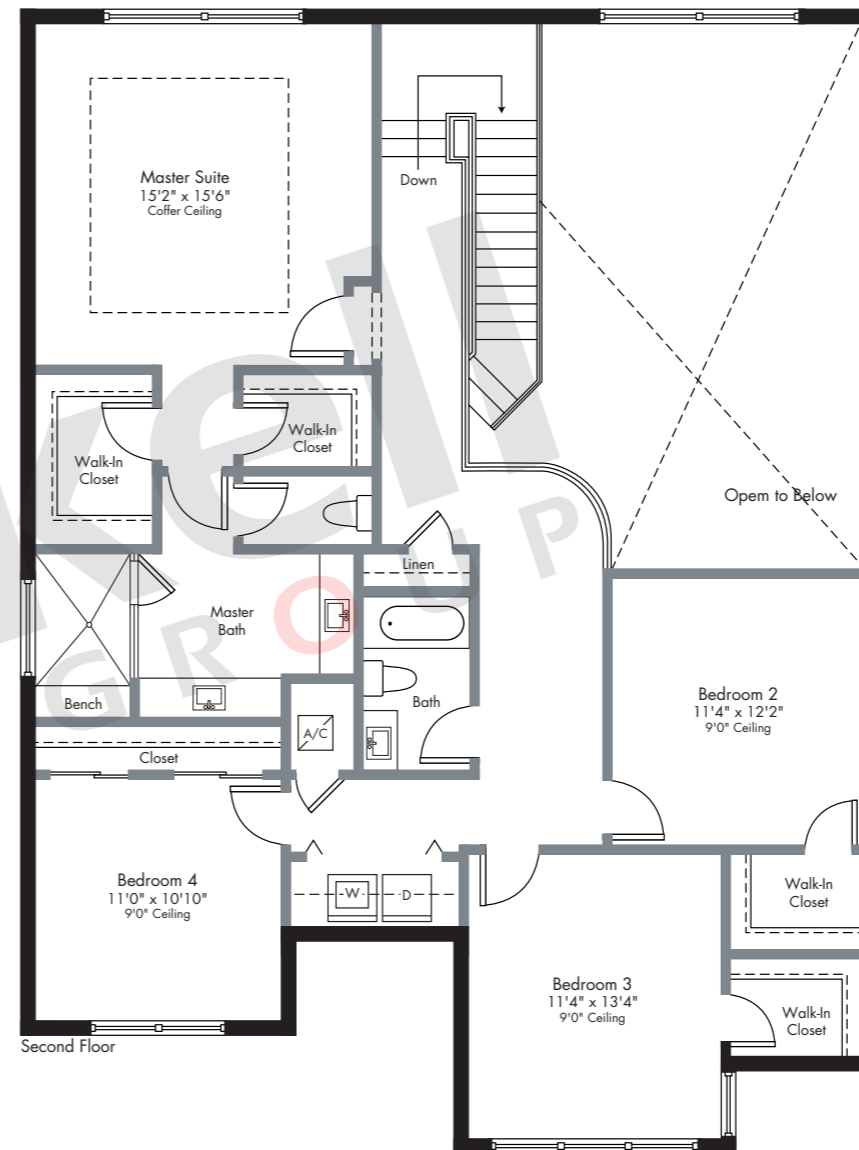
2-story

5 Bedrooms · 3.5 Baths · Family Room  
Covered Terrace · 2-Car Garage

	SQ FT	M <sup>2</sup>
A/C Area	2,976	276.5
Covered Entry	38	3.5
Covered Terrace	86	8.0
Garage	374	34.7
<b>Total</b>	<b>3,474</b>	<b>322.7</b>



First Floor



Second Floor

# Brickell

REALTY GROUP

2071 NW 112th Avenue, Miami, FL 33172

[www.brickell-realty.com/Satori.html](http://www.brickell-realty.com/Satori.html)

Oral representation cannot be relied upon as correctly stating representations of the developer. Pictures of homes and condos may not reflect the final products which may vary. Dimensions, specifications, improvements, rendering, plans, land uses, materials, amenities, prices, and availability are subject to change at the developer's discretion without notice.

Stated dimensions are approximate and measured to the exterior boundaries of the exterior walls and the centerline of interior demising walls which in fact vary from the dimensions that would be determined by using the description and definition of the "Unit" set forth in the Declaration (which generally only includes the interior airspace between the perimeter walls and excludes interior structural components).



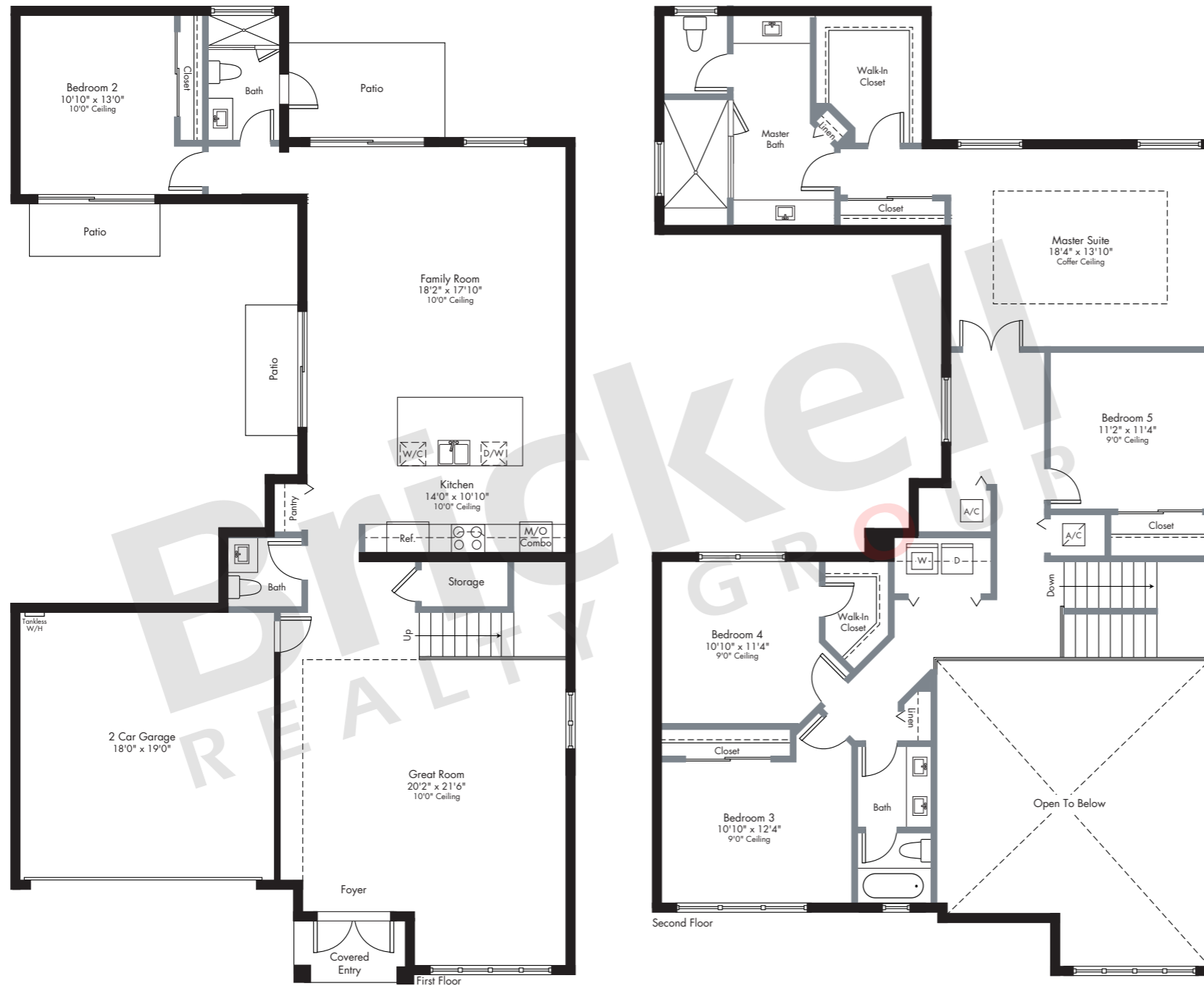
Executives Estates Collection

## Sanctuary

2-story

5 Bedrooms · 3.5 Baths · Family Room  
2-Car Garage

	SQ FT	M <sup>2</sup>
A/C Area	3,065	284.7
Covered Entry	36	3.3
Garage	377	35.0
<b>Total</b>	<b>3,478</b>	<b>323.0</b>



# Brickell

REALTY GROUP

2071 NW 112th Avenue, Miami, FL 33172

[www.brickell-realty.com/Satori.html](http://www.brickell-realty.com/Satori.html)

Oral representation cannot be relied upon as correctly stating representations of the developer. Pictures of homes and condos may not reflect the final products which may vary. Dimensions, specifications, improvements, rendering, plans, land uses, materials, amenities, prices, and availability are subject to change at the developer's discretion without notice.

Stated dimensions are approximate and measured to the exterior boundaries of the exterior walls and the centerline of interior demising walls which in fact vary from the dimensions that would be determined by using the description and definition of the "Unit" set forth in the Declaration (which generally only includes the interior airspace between the perimeter walls and excludes interior structural components).



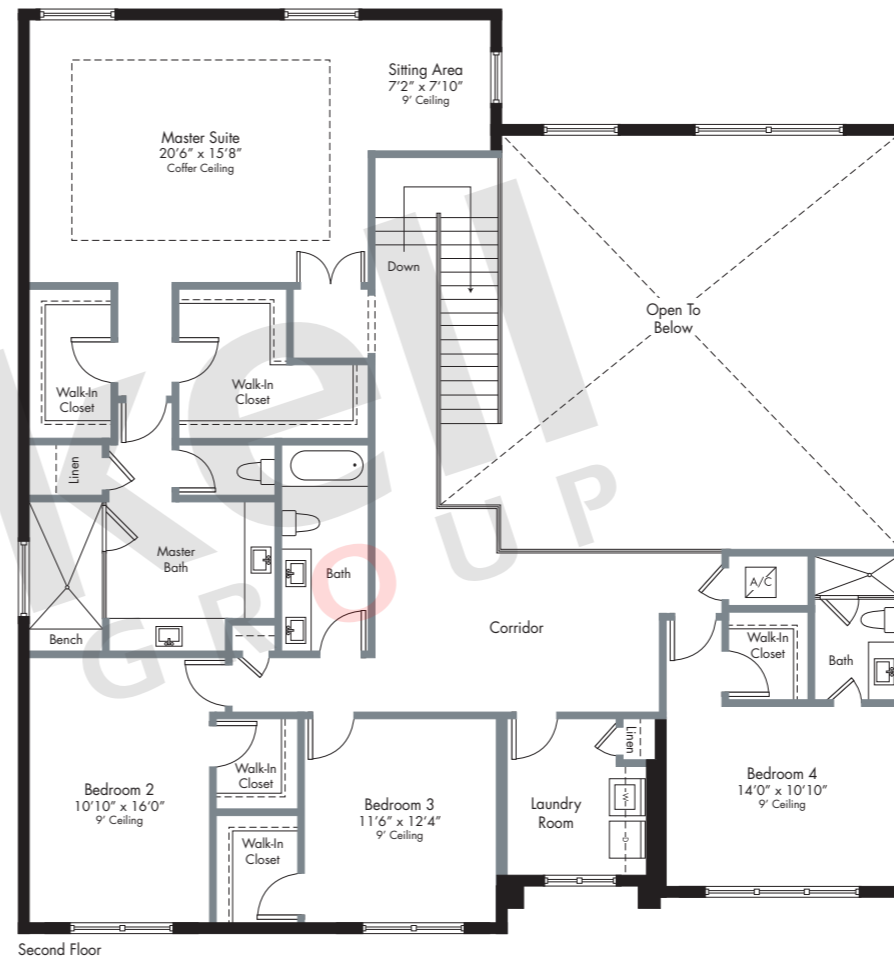
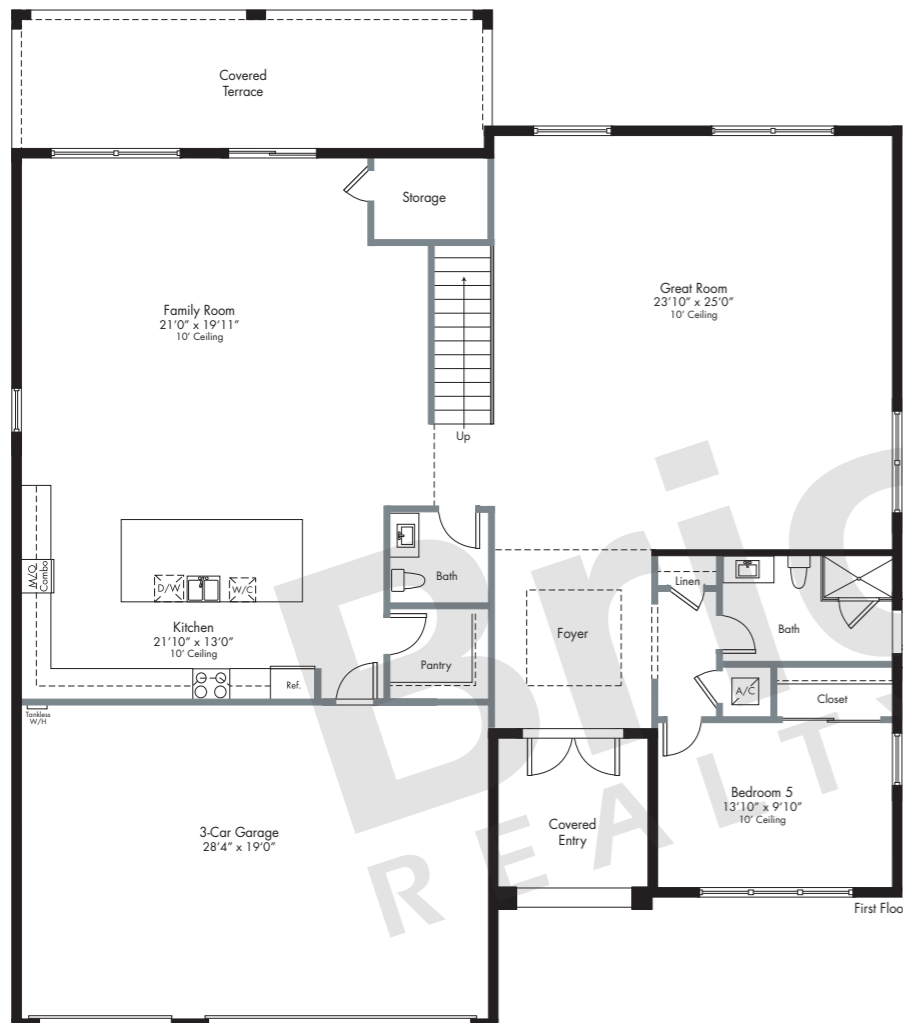
Presidential Estates Collection

## Shanti

2-story

5 Bedrooms · 4.5 Baths · Family Room · Sitting Area · Covered Terrace · 3-Car Garage

	SQ FT	M <sup>2</sup>
A/C Area	4,225	392.5
Covered Entry	93	8.6
Covered Terrace	244	22.7
Garage	582	54.1
<b>Total</b>	<b>5,144</b>	<b>477.9</b>



# Brickell

REALTY GROUP

2071 NW 112th Avenue, Miami, FL 33172

[www.brickell-realty.com/Satori.html](http://www.brickell-realty.com/Satori.html)

Oral representation cannot be relied upon as correctly stating representations of the developer. Pictures of homes and condos may not reflect the final products which may vary. Dimensions, specifications, improvements, rendering, plans, land uses, materials, amenities, prices, and availability are subject to change at the developer's discretion without notice.

Stated dimensions are approximate and measured to the exterior boundaries of the exterior walls and the centerline of interior demising walls which in fact vary from the dimensions that would be determined by using the description and definition of the "Unit" set forth in the Declaration (which generally only includes the interior airspace between the perimeter walls and excludes interior structural components).



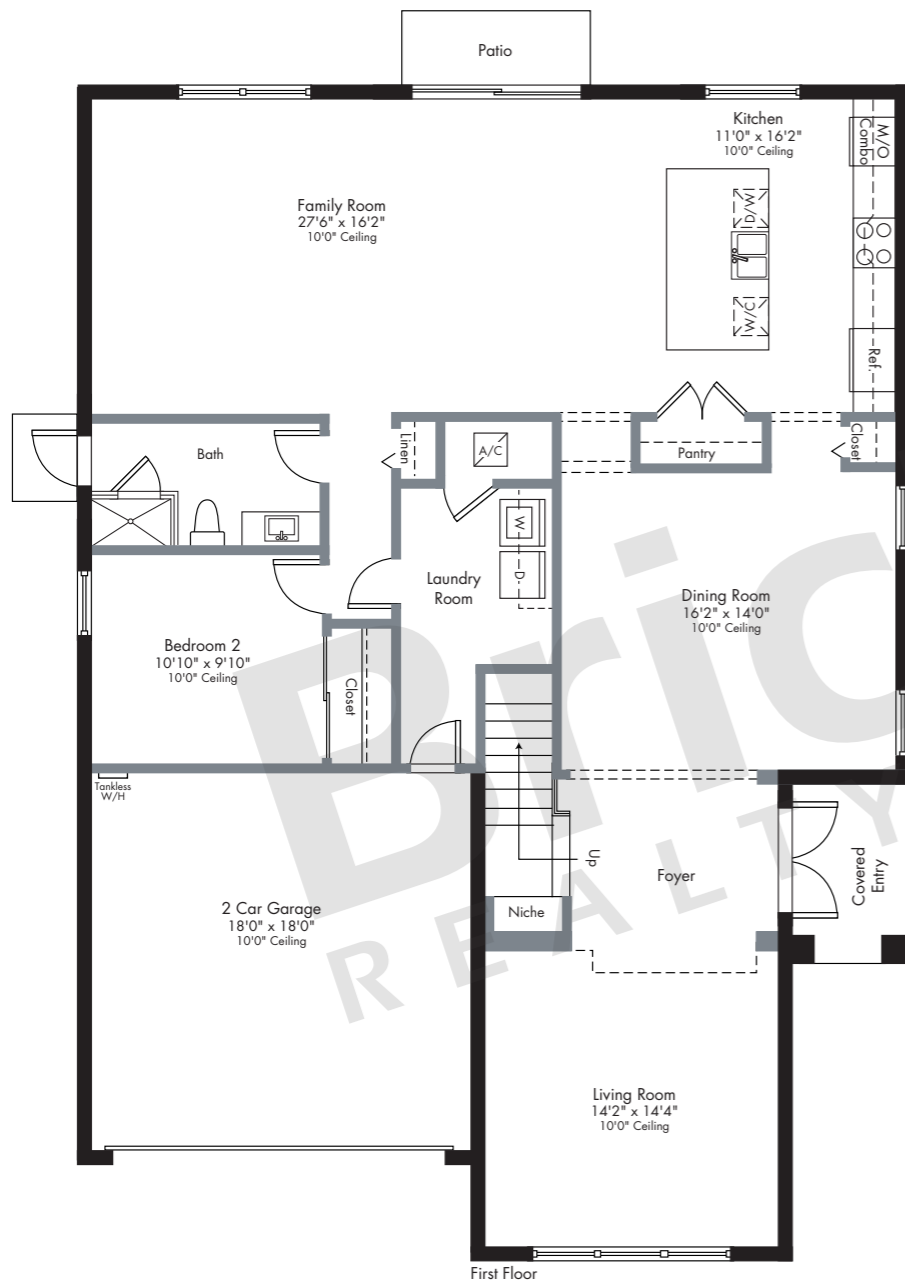
Executives Estates Collection

## Tranquility

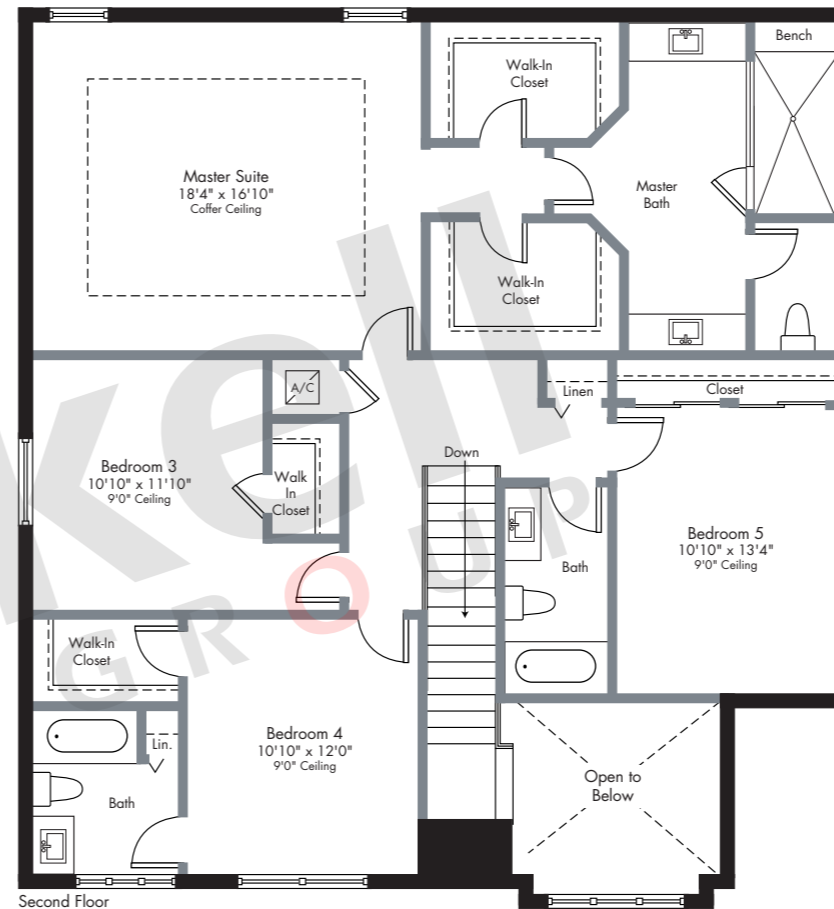
2-story

5 Bedrooms · 4 Baths · Family Room  
2-Car Garage

	SQ FT	M <sup>2</sup>
A/C Area	3,162	293.7
Covered Entry	48	4.5
Garage	348	32.3
<b>Total</b>	<b>3,558</b>	<b>330.5</b>



First Floor



Second Floor

# Brickell

REALTY GROUP

2071 NW 112th Avenue, Miami, FL 33172

[www.brickell-realty.com/Satori.html](http://www.brickell-realty.com/Satori.html)

Oral representation cannot be relied upon as correctly stating representations of the developer. Pictures of homes and condos may not reflect the final products which may vary. Dimensions, specifications, improvements, rendering, plans, land uses, materials, amenities, prices, and availability are subject to change at the developer's discretion without notice.

Stated dimensions are approximate and measured to the exterior boundaries of the exterior walls and the centerline of interior demising walls which in fact vary from the dimensions that would be determined by using the description and definition of the "Unit" set forth in the Declaration (which generally only includes the interior airspace between the perimeter walls and excludes interior structural components).