

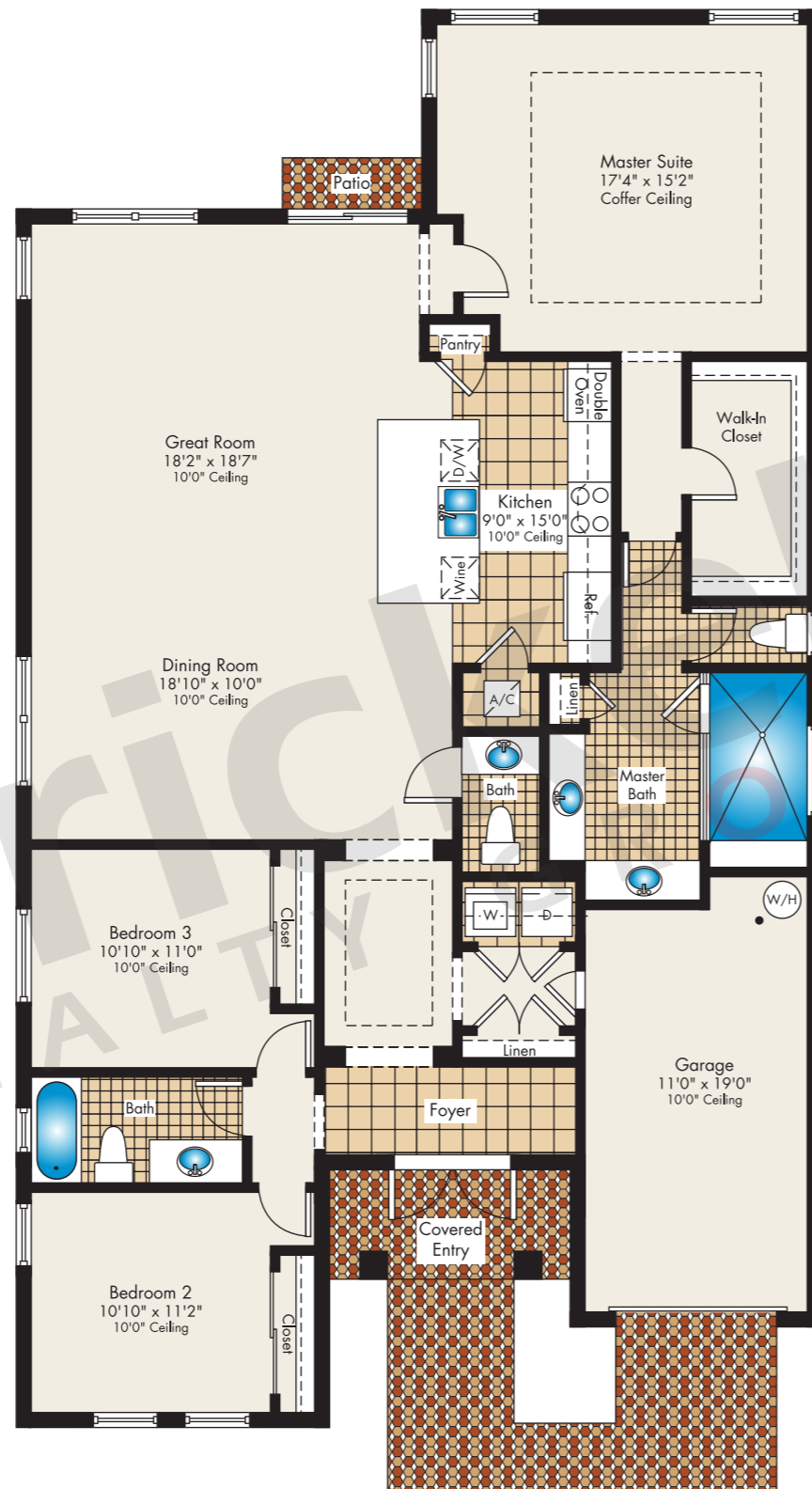


SERENITY

Harmony

1-Story · 3 Bedrooms · 2.5 Baths
Great Room · 1-Car Garage

	SQ FT	M ²
A/C Area	1,957	181.8
Covered Entrance	49	4.6
Garage	244	22.7
Total	2,250	209.1



Brickell

REALTY GROUP

2071 NW 112th Avenue, Miami, FL 33172

www.brickell-realty.com/Serenity.html

Oral representation cannot be relied upon as correctly stating representations of the developer. Pictures of homes and condos may not reflect the final products which may vary. Dimensions, specifications, improvements, rendering, plans, land uses, materials, amenities, prices, and availability are subject to change at the developer's discretion without notice.

Stated dimensions are approximate and measured to the exterior boundaries of the exterior walls and the centerline of interior demising walls which in fact vary from the dimensions that would be determined by using the description and definition of the "Unit" set forth in the Declaration (which generally only includes the interior airspace between the perimeter walls and excludes interior structural components).

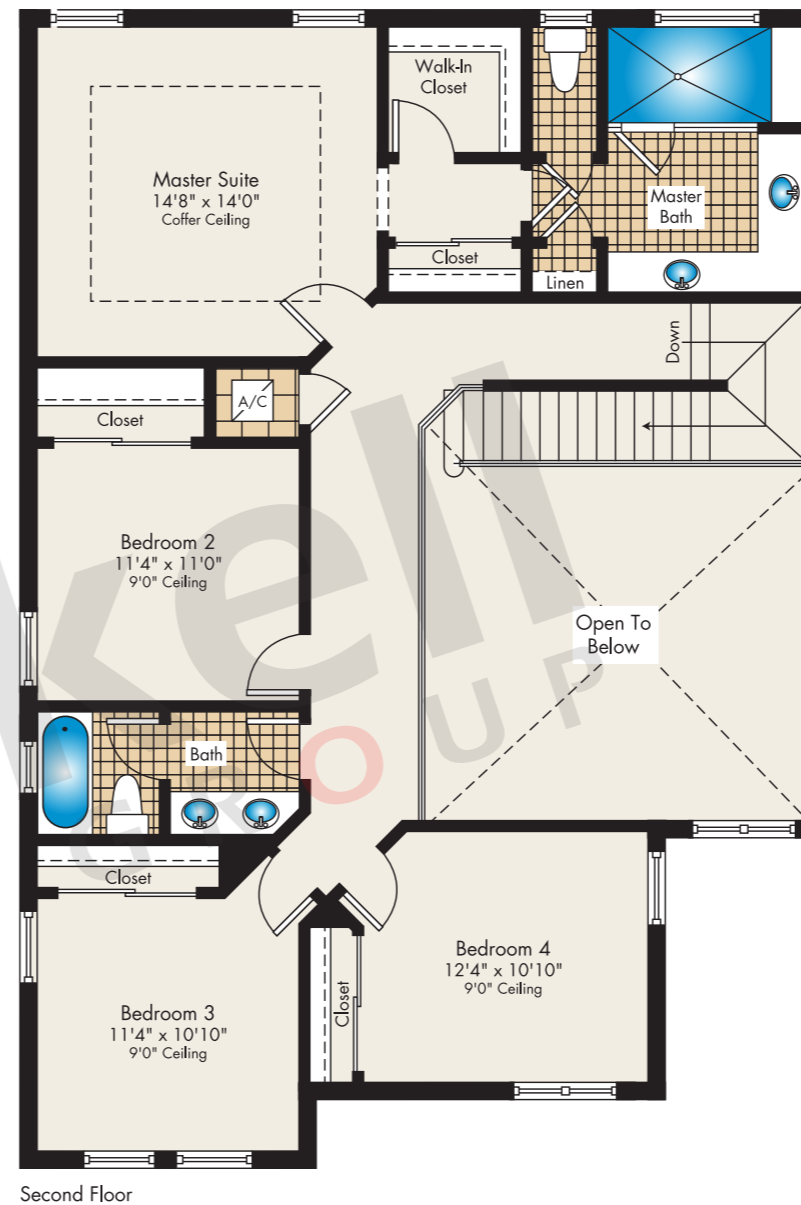


SERENITY

Nirvana

2-Story · 4 Bedrooms · 3 Baths
Family Room · 2-Car Garage

	SQ FT	M ²
A/C Area	2,531	235.1
Covered Entrance	110	10.2
Garage	380	35.3
Total	3,021	280.6



Brickell

REALTY GROUP

2071 NW 112th Avenue, Miami, FL 33172

www.brickell-realty.com/Serenity.html

Oral representation cannot be relied upon as correctly stating representations of the developer. Pictures of homes and condos may not reflect the final products which may vary. Dimensions, specifications, improvements, rendering, plans, land uses, materials, amenities, prices, and availability are subject to change at the developer's discretion without notice.

Stated dimensions are approximate and measured to the exterior boundaries of the exterior walls and the centerline of interior demising walls which in fact vary from the dimensions that would be determined by using the description and definition of the "Unit" set forth in the Declaration (which generally only includes the interior airspace between the perimeter walls and excludes interior structural components).

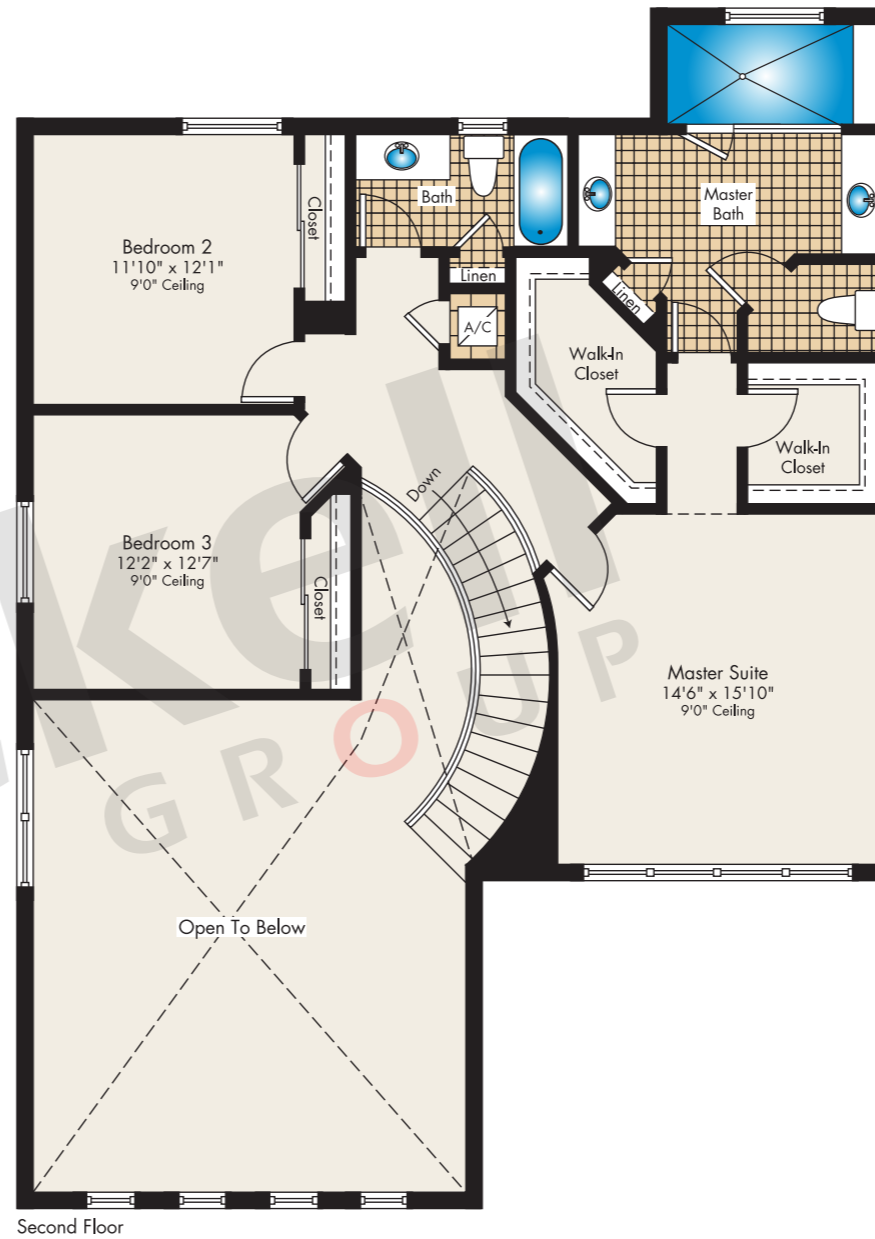
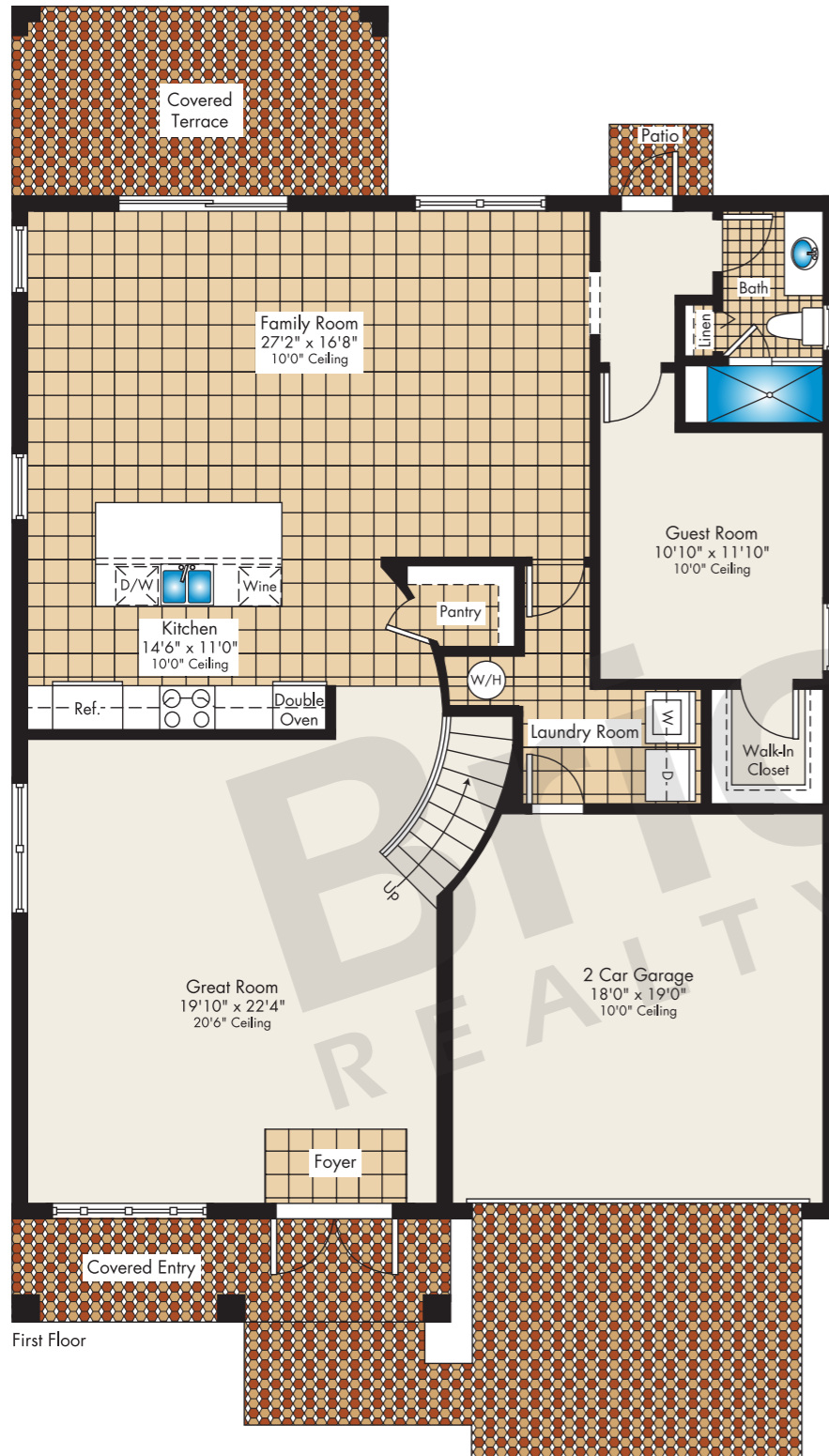


SERENITY

Oasis

2-Story · 4 Bedrooms · 3 Baths
Family Room · 2-Car Garage

	SQ FT	M ²
A/C Area	2,846	264.4
Covered Entrance	100	9.3
Covered Terrace	162	15.0
Garage	362	33.6
Total	3,470	322.3



Brickell

REALTY GROUP

2071 NW 112th Avenue, Miami, FL 33172

www.brickell-realty.com/Serenity.html

Oral representation cannot be relied upon as correctly stating representations of the developer. Pictures of homes and condos may not reflect the final products which may vary. Dimensions, specifications, improvements, rendering, plans, land uses, materials, amenities, prices, and availability are subject to change at the developer's discretion without notice.

Stated dimensions are approximate and measured to the exterior boundaries of the exterior walls and the centerline of interior demising walls which in fact vary from the dimensions that would be determined by using the description and definition of the "Unit" set forth in the Declaration (which generally only includes the interior airspace between the perimeter walls and excludes interior structural components).



SERENITY

Retreat

2-Story · 5 Bedrooms · 3.5 Baths
Family Room · 2-Car Garage

	SQ FT	M ²
A/C Area	3,047	283.1
Covered Entrance	42	3.9
Covered Terrace	87	8.1
Garage	374	34.7
Total	3,550	329.8



Brickell

REALTY GROUP

2071 NW 112th Avenue, Miami, FL 33172

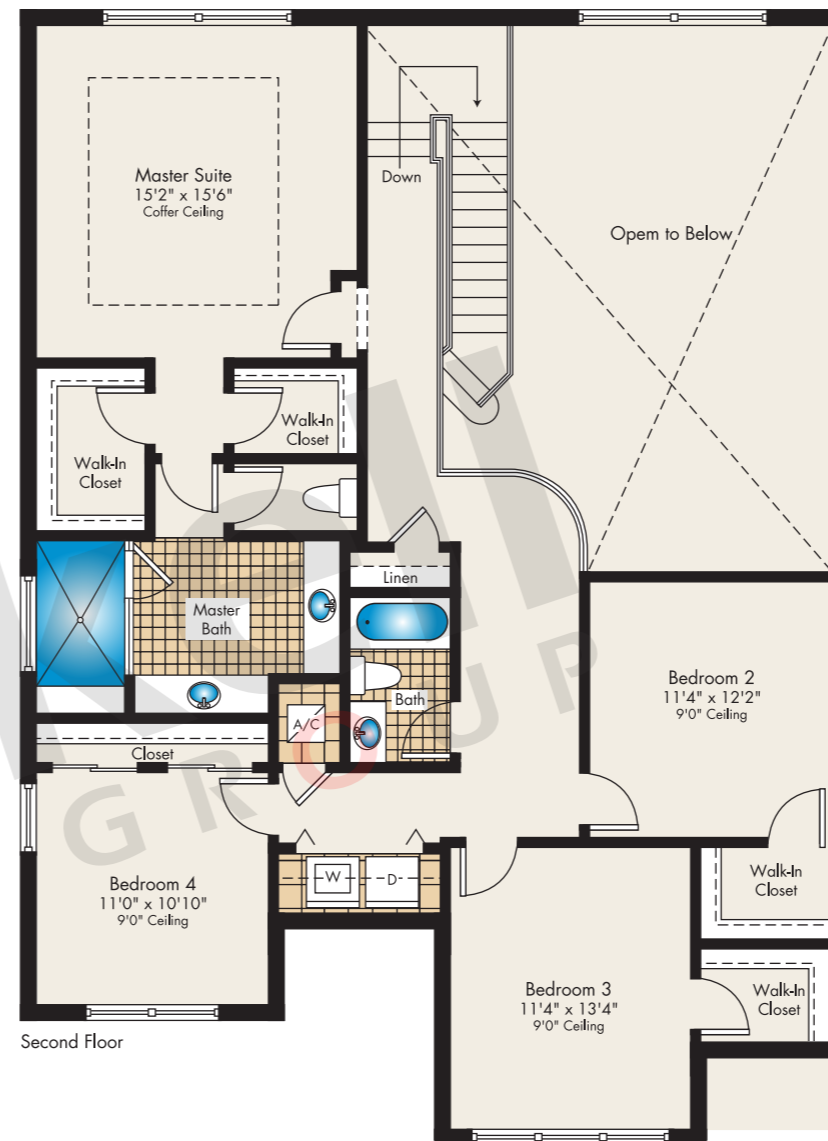
www.brickell-realty.com/Serenity.html

Oral representation cannot be relied upon as correctly stating representations of the developer. Pictures of homes and condos may not reflect the final products which may vary. Dimensions, specifications, improvements, rendering, plans, land uses, materials, amenities, prices, and availability are subject to change at the developer's discretion without notice.

Stated dimensions are approximate and measured to the exterior boundaries of the exterior walls and the centerline of interior demising walls which in fact vary from the dimensions that would be determined by using the description and definition of the "Unit" set forth in the Declaration (which generally only includes the interior airspace between the perimeter walls and excludes interior structural components).



First Floor



Second Floor

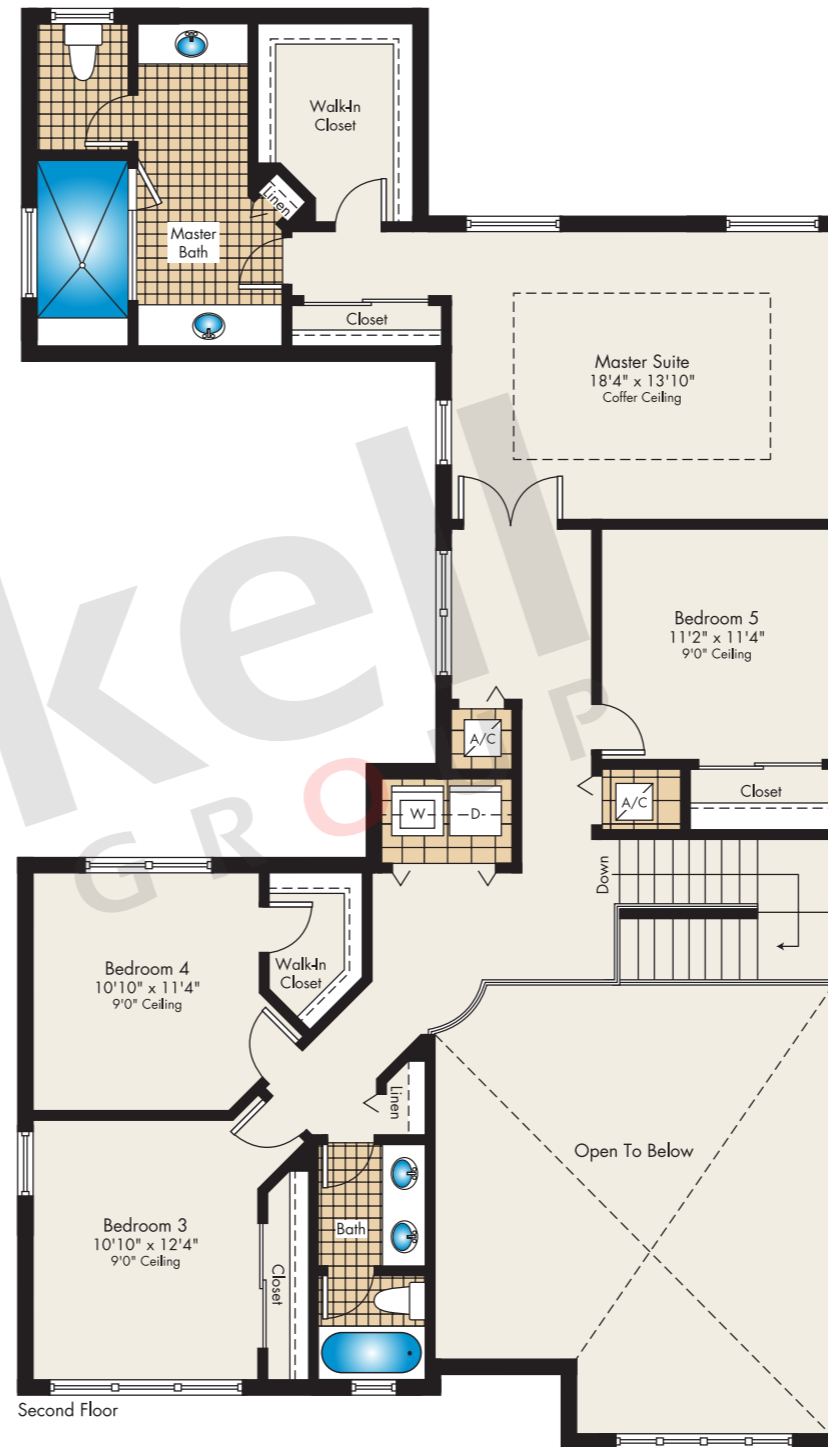
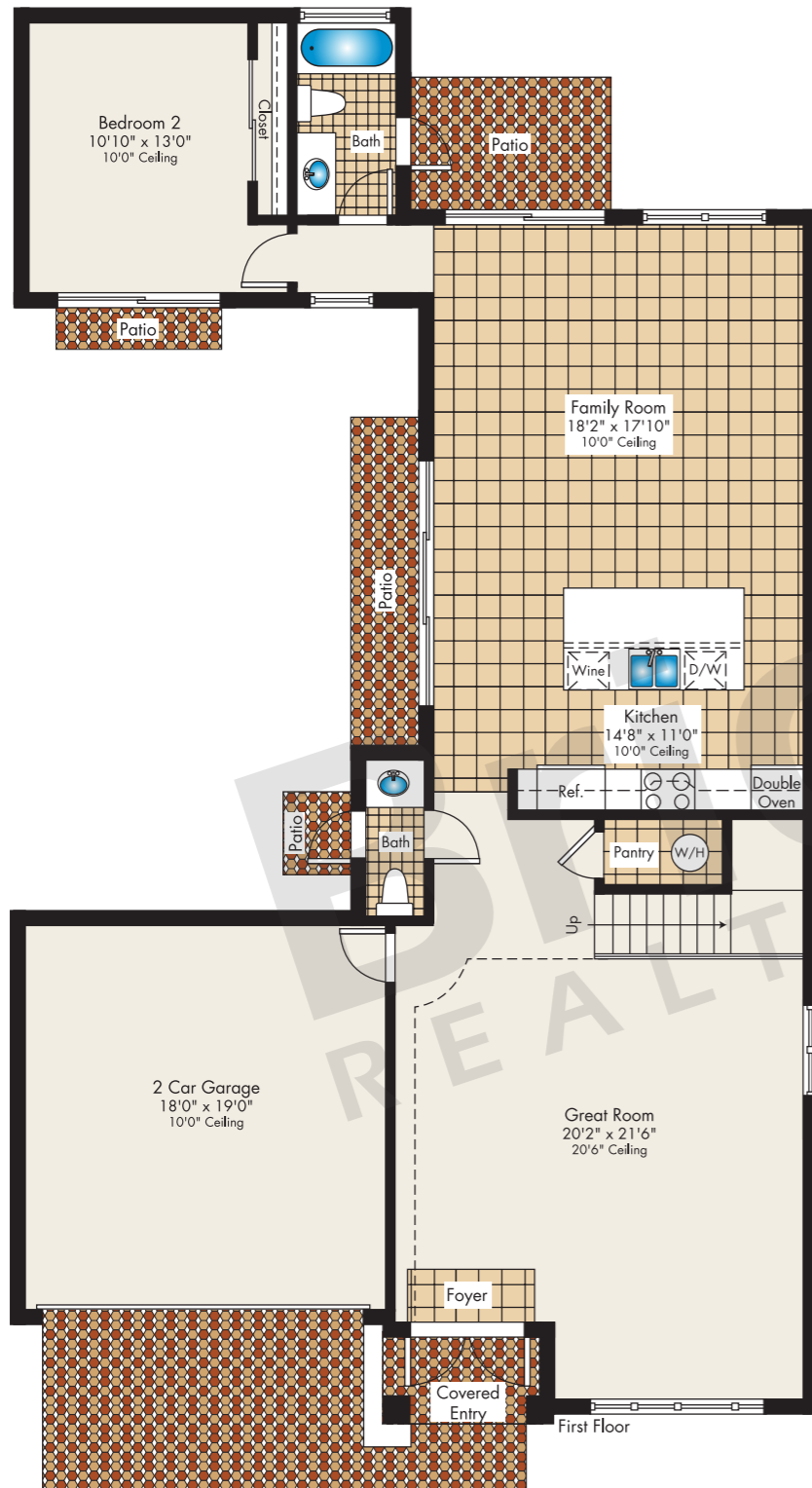


SERENITY

Sanctuary

2-Story · 5 Bedrooms · 3.5 Baths
Family Room · 2-Car Garage

	SQ FT	M ²
A/C Area	3,098	287.8
Covered Entrance	35	3.3
Garage	379	35.2
Total	3,512	326.3



Brickell

REALTY GROUP

2071 NW 112th Avenue, Miami, FL 33172

www.brickell-realty.com/Serenity.html

Oral representation cannot be relied upon as correctly stating representations of the developer. Pictures of homes and condos may not reflect the final products which may vary. Dimensions, specifications, improvements, rendering, plans, land uses, materials, amenities, prices, and availability are subject to change at the developer's discretion without notice.

Stated dimensions are approximate and measured to the exterior boundaries of the exterior walls and the centerline of interior demising walls which in fact vary from the dimensions that would be determined by using the description and definition of the "Unit" set forth in the Declaration (which generally only includes the interior airspace between the perimeter walls and excludes interior structural components).

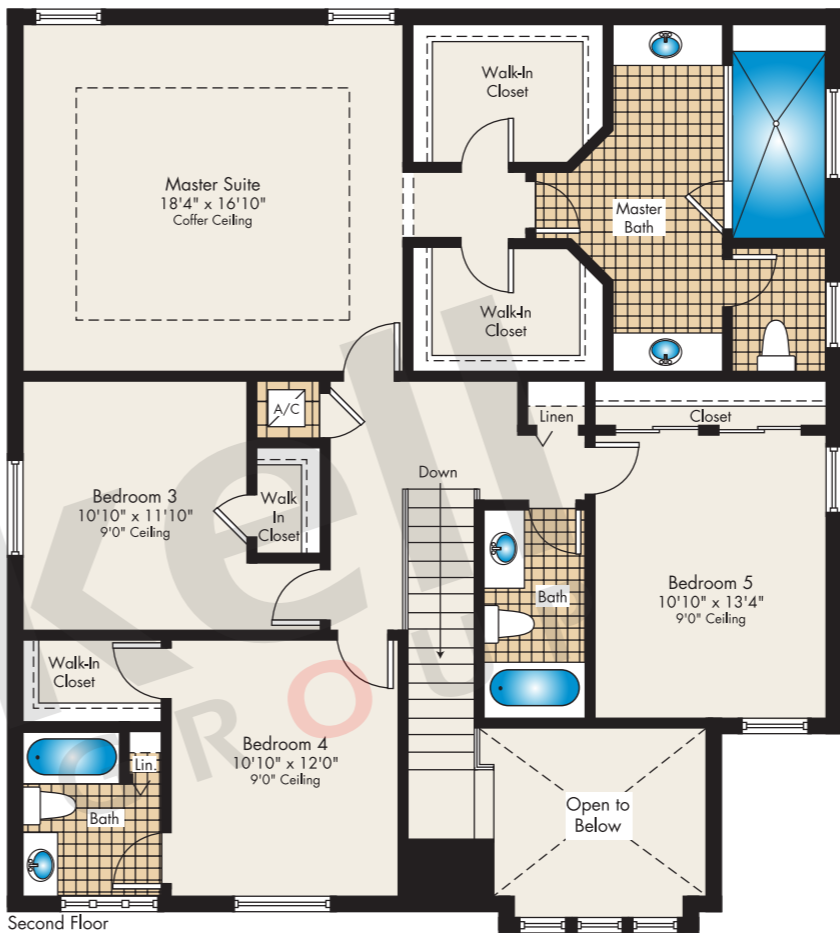
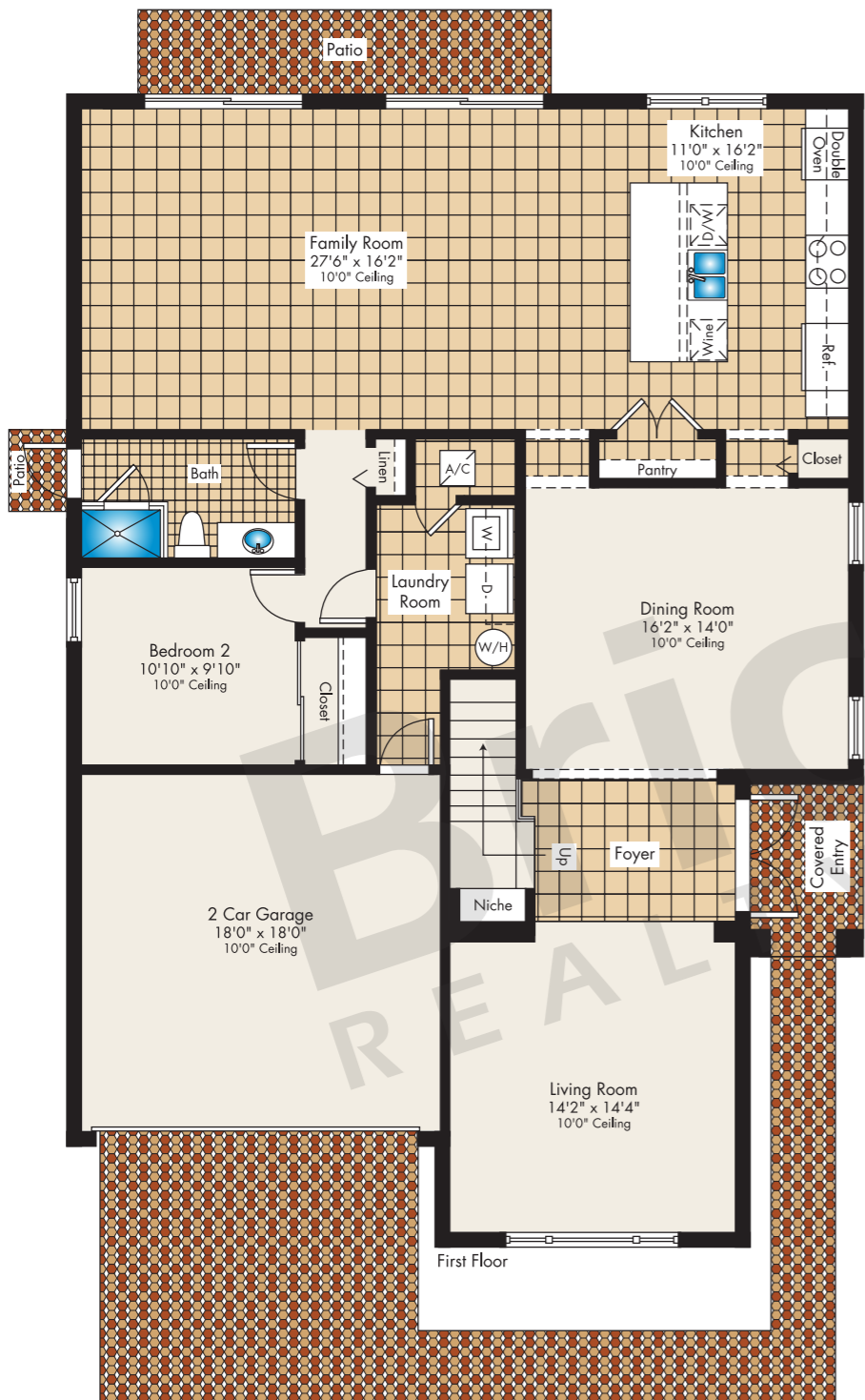


SERENITY

Tranquility

2-Story · 5 Bedrooms · 4 Baths
Family Room · 2-Car Garage

	SQ FT	M ²
A/C Area	3,315	308.0
Covered Entrance	47	4.4
Garage	348	32.3
Total	3,710	344.7



Brickell REALTY GROUP

2071 NW 112th Avenue, Miami, FL 33172

www.brickell-realty.com/Serenity.html

Oral representation cannot be relied upon as correctly stating representations of the developer. Pictures of homes and condos may not reflect the final products which may vary. Dimensions, specifications, improvements, rendering, plans, land uses, materials, amenities, prices, and availability are subject to change at the developer's discretion without notice.

Stated dimensions are approximate and measured to the exterior boundaries of the exterior walls and the centerline of interior demising walls which in fact vary from the dimensions that would be determined by using the description and definition of the "Unit" set forth in the Declaration (which generally only includes the interior airspace between the perimeter walls and excludes interior structural components).