

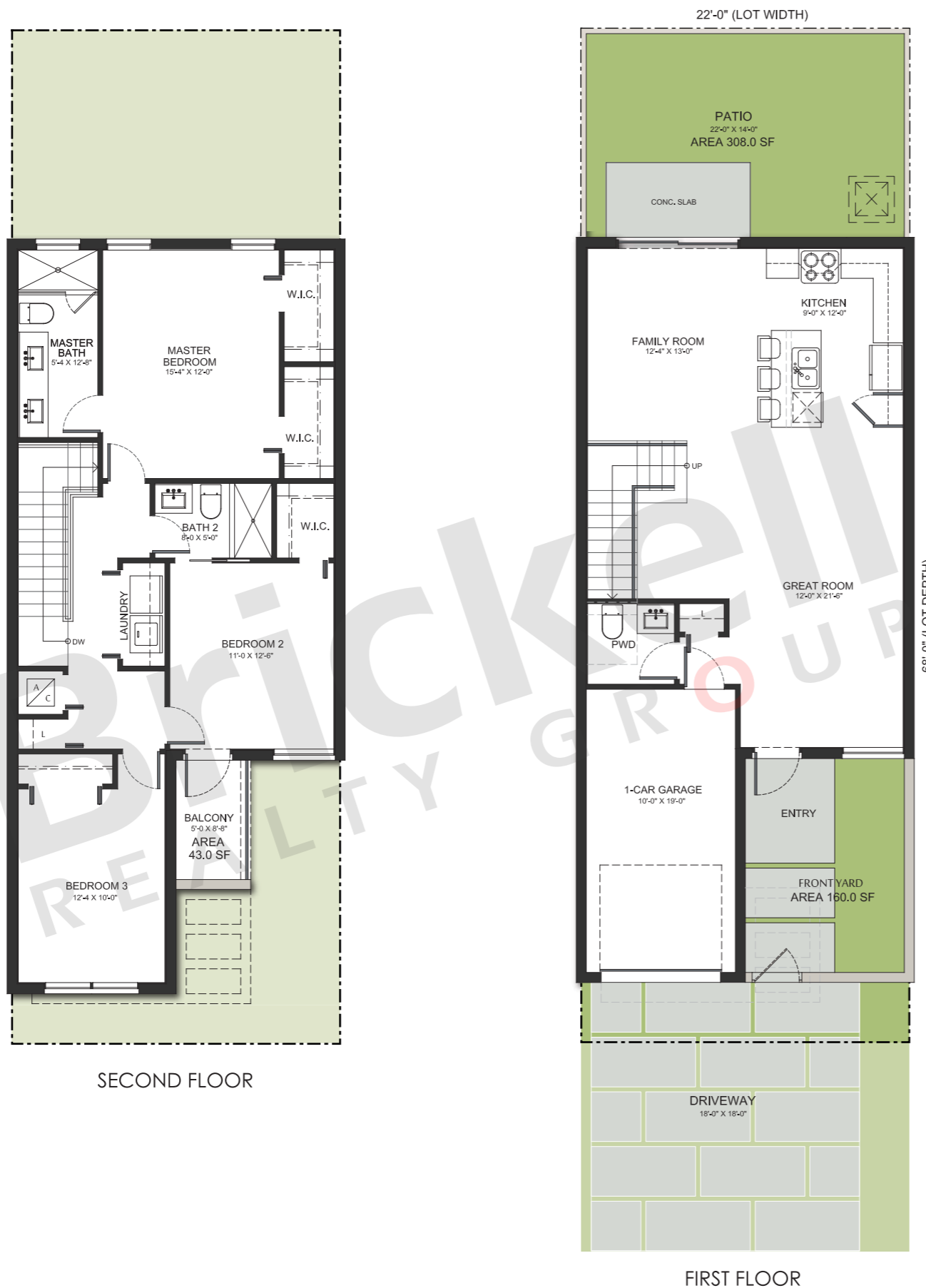
### Model A

3 Bedrooms · 2.5 Baths

	SQ FT	M <sup>2</sup>
Interior	1,600	148.6
Garage	214	19.9
Entry	50	4.6
Balcony	50	4.6
<b>Total</b>	<b>1,914</b>	<b>177.7</b>



FRONT ELEVATION



**Model B**

3 Bedrooms · 3.5 Baths

	SQ FT	M <sup>2</sup>
Interior	1,705	158.4
Garage	209	19.4
Entry	35	3.3
Balcony	48	4.5
<b>Total</b>	<b>1,997</b>	<b>185.6</b>



FRONT ELEVATION

**Brickell**  
REALTY GROUP

2071 NW 112th Avenue, Miami, FL 33172

[www.brickell-realty.com/CenturyParkPlace.html](http://www.brickell-realty.com/CenturyParkPlace.html)

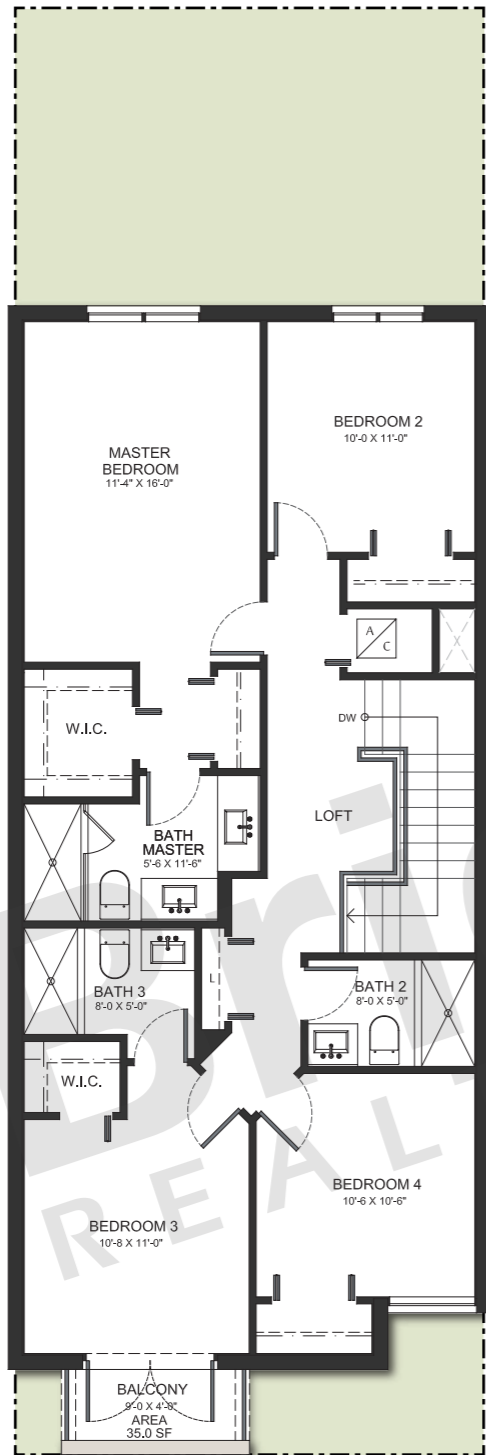
Oral representation cannot be relied upon as correctly stating representations of the developer. Pictures of homes and condos may not reflect the final products which may vary. Dimensions, specifications, improvements, rendering, plans, land uses, materials, amenities, prices, and availability are subject to change at the developer's discretion without notice.

Stated dimensions are approximate and measured to the exterior boundaries of the exterior walls and the centerline of interior demising walls which in fact vary from the dimensions that would be determined by using the description and definition of the "Unit" set forth in the Declaration (which generally only includes the interior airspace between the perimeter walls and excludes interior structural components).

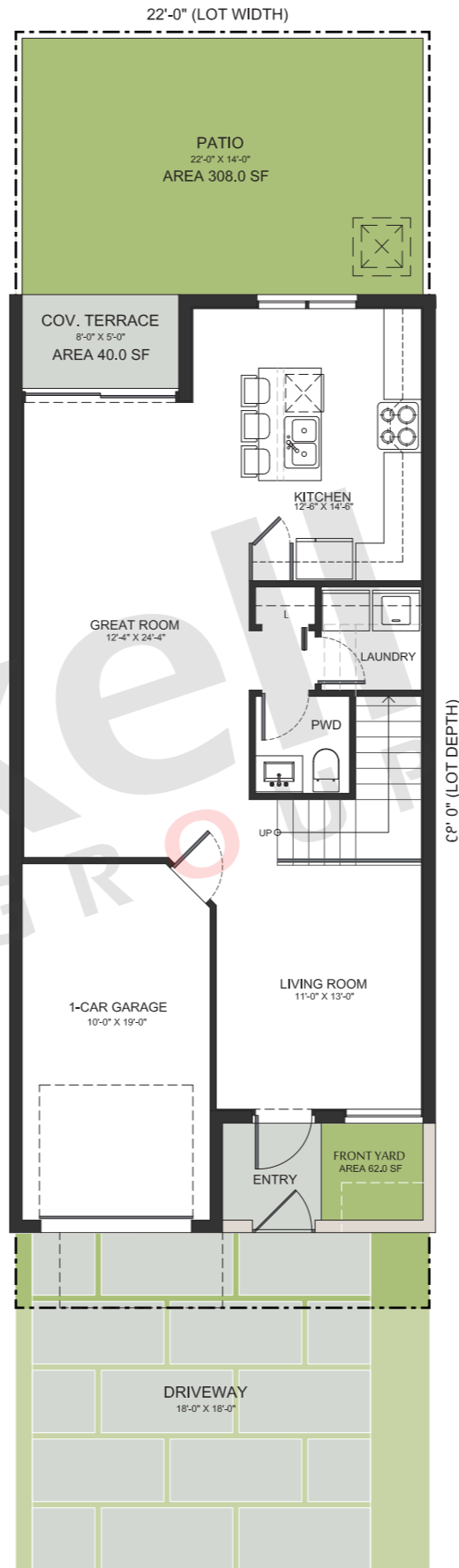


SECOND FLOOR

FIRST FLOOR



SECOND FLOOR



FIRST FLOOR

**Model C**

4 Bedrooms · 3.5 Baths

	SQ FT	M <sup>2</sup>
Interior	1,812	168.3
Garage	204	19.0
Entry	40	3.7
Balcony	35	3.3
<b>Total</b>	<b>2,091</b>	<b>194.3</b>



FRONT ELEVATION

**Brickell**  
REALTY GROUP

2071 NW 112th Avenue, Miami, FL 33172

[www.brickell-realty.com/CenturyParkPlace.html](http://www.brickell-realty.com/CenturyParkPlace.html)

Oral representation cannot be relied upon as correctly stating representations of the developer. Pictures of homes and condos may not reflect the final products which may vary. Dimensions, specifications, improvements, rendering, plans, land uses, materials, amenities, prices, and availability are subject to change at the developer's discretion without notice.

Stated dimensions are approximate and measured to the exterior boundaries of the exterior walls and the centerline of interior demising walls which in fact vary from the dimensions that would be determined by using the description and definition of the "Unit" set forth in the Declaration (which generally only includes the interior airspace between the perimeter walls and excludes interior structural components).

### Model D

4 Bedrooms · 3.5 Baths

	SQ FT	M <sup>2</sup>
Interior	1,904	176.9
Garage	212	19.7
Entry	40	3.7
Balcony	95	8.8
<b>Total</b>	<b>2,251</b>	<b>209.1</b>



FRONT ELEVATION

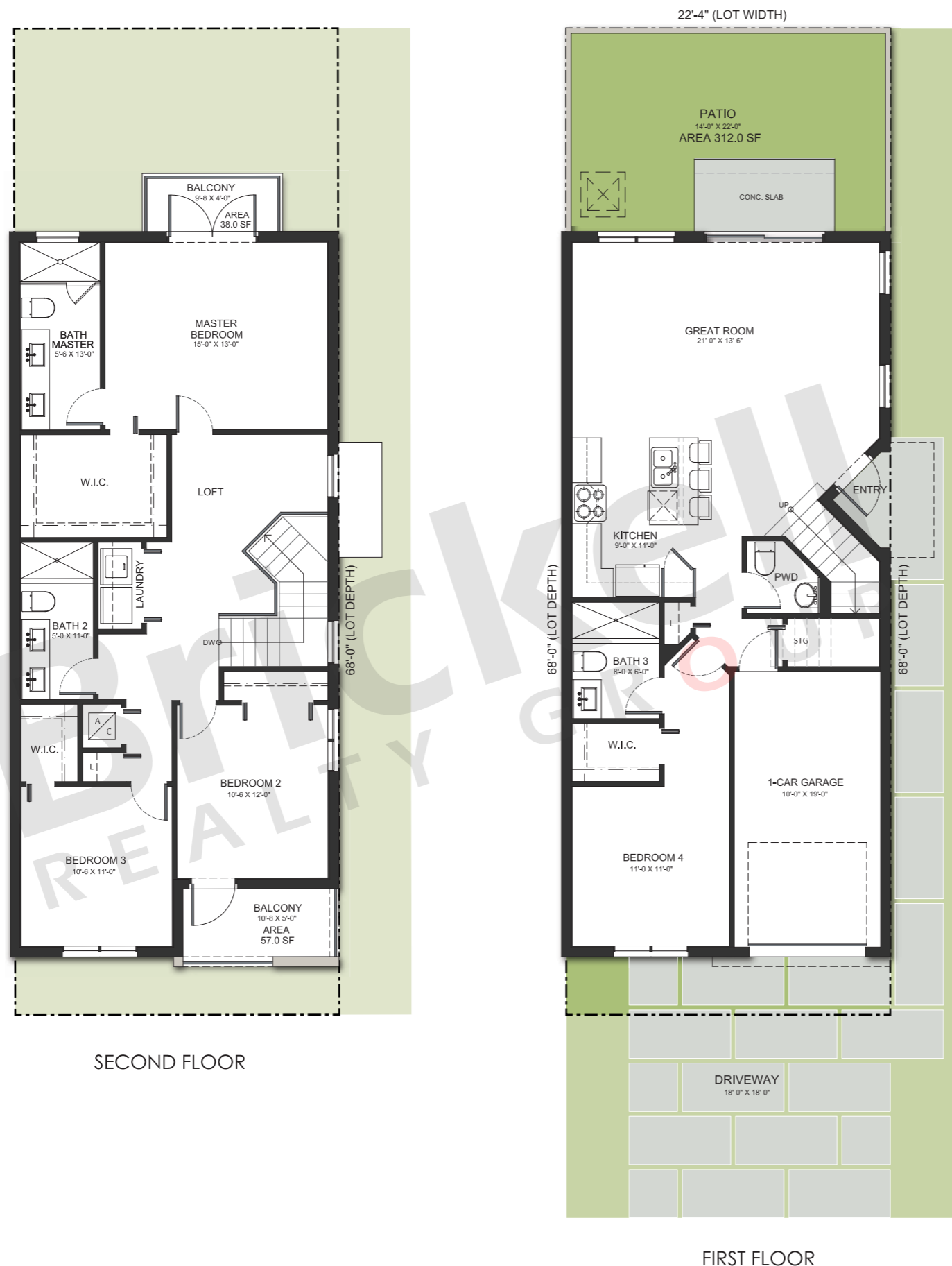
**Brickell**  
REALTY GROUP

2071 NW 112th Avenue, Miami, FL 33172

[www.brickell-realty.com/CenturyParkPlace.html](http://www.brickell-realty.com/CenturyParkPlace.html)

Oral representation cannot be relied upon as correctly stating representations of the developer. Pictures of homes and condos may not reflect the final products which may vary. Dimensions, specifications, improvements, rendering, plans, land uses, materials, amenities, prices, and availability are subject to change at the developer's discretion without notice.

Stated dimensions are approximate and measured to the exterior boundaries of the exterior walls and the centerline of interior demising walls which in fact vary from the dimensions that would be determined by using the description and definition of the "Unit" set forth in the Declaration (which generally only includes the interior airspace between the perimeter walls and excludes interior structural components).



SECOND FLOOR

FIRST FLOOR