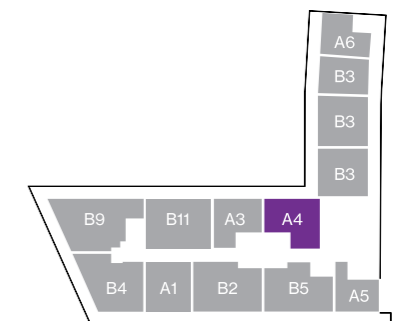
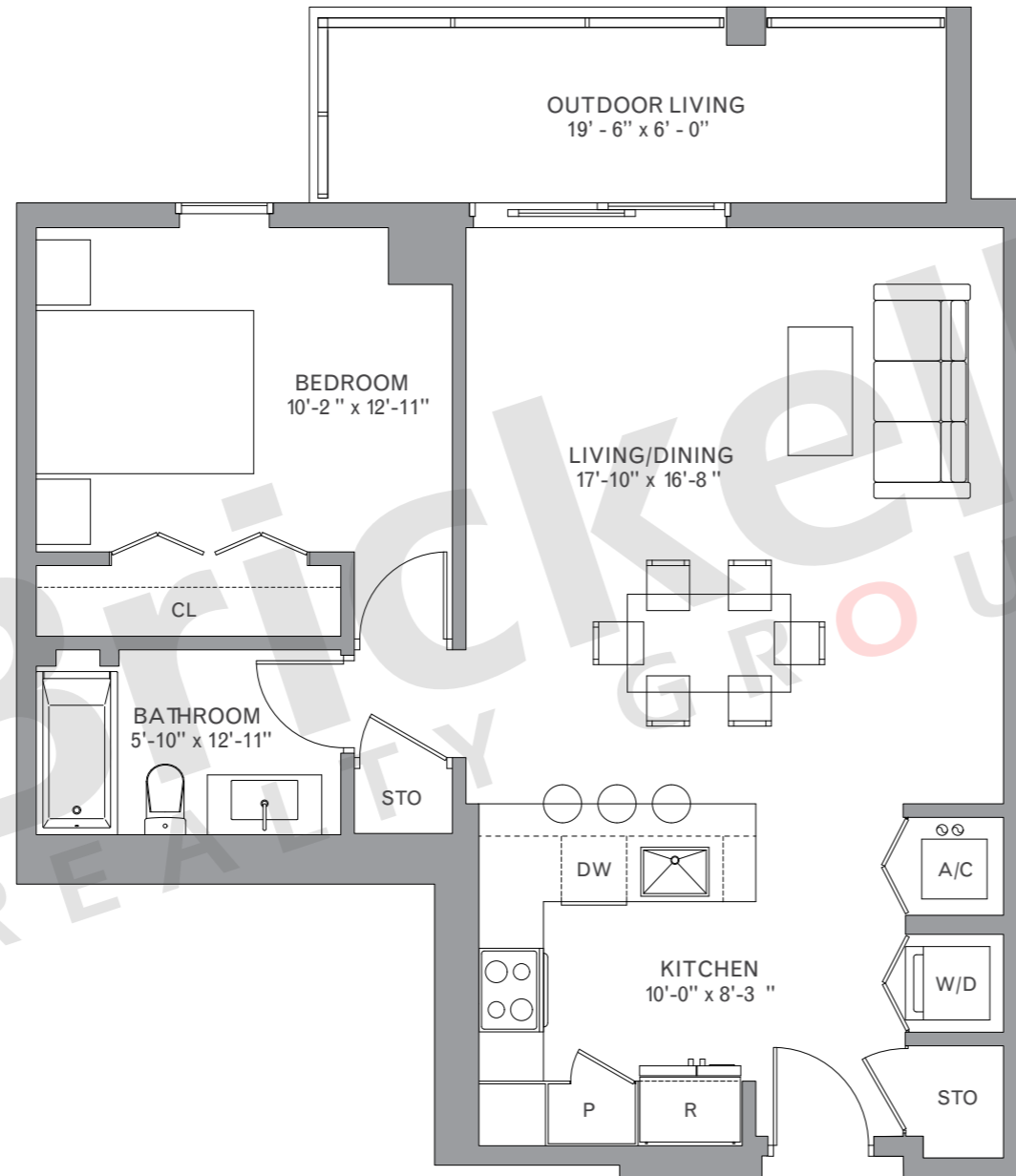


Model A4 - Line 12

Floors: 2-6

1 Bedroom · 1 Bath

	SQ FT	M ²
Interior	769	71.4
Outdoor	169	15.7
Total	938	87.1



Brickell

REALTY GROUP

2071 NW 112th Avenue, Miami, FL 33172

www.brickell-realty.com/Metropica.html

Oral representation cannot be relied upon as correctly stating representations of the developer. Renderings of residences may not reflect the final products. Dimensions, specifications, improvements, rendering, plans, land uses, materials, amenities, prices, and availability are subject to change at the developer's discretion without notice.

Stated dimensions are approximate and measured to the exterior boundaries of the exterior walls and the centerline of interior demising walls which in fact vary from the dimensions that would be determined by using the description and definition of the "Unit" set forth in the Declaration which generally only includes the interior airspace between the perimeter walls (measuring from interior wall plane to interior wall plane) and excludes interior structural components.

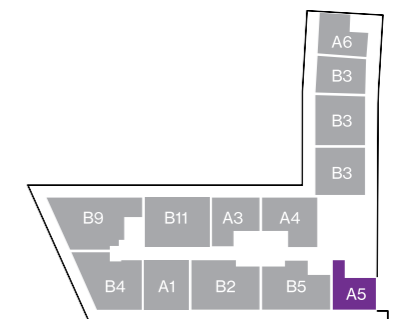
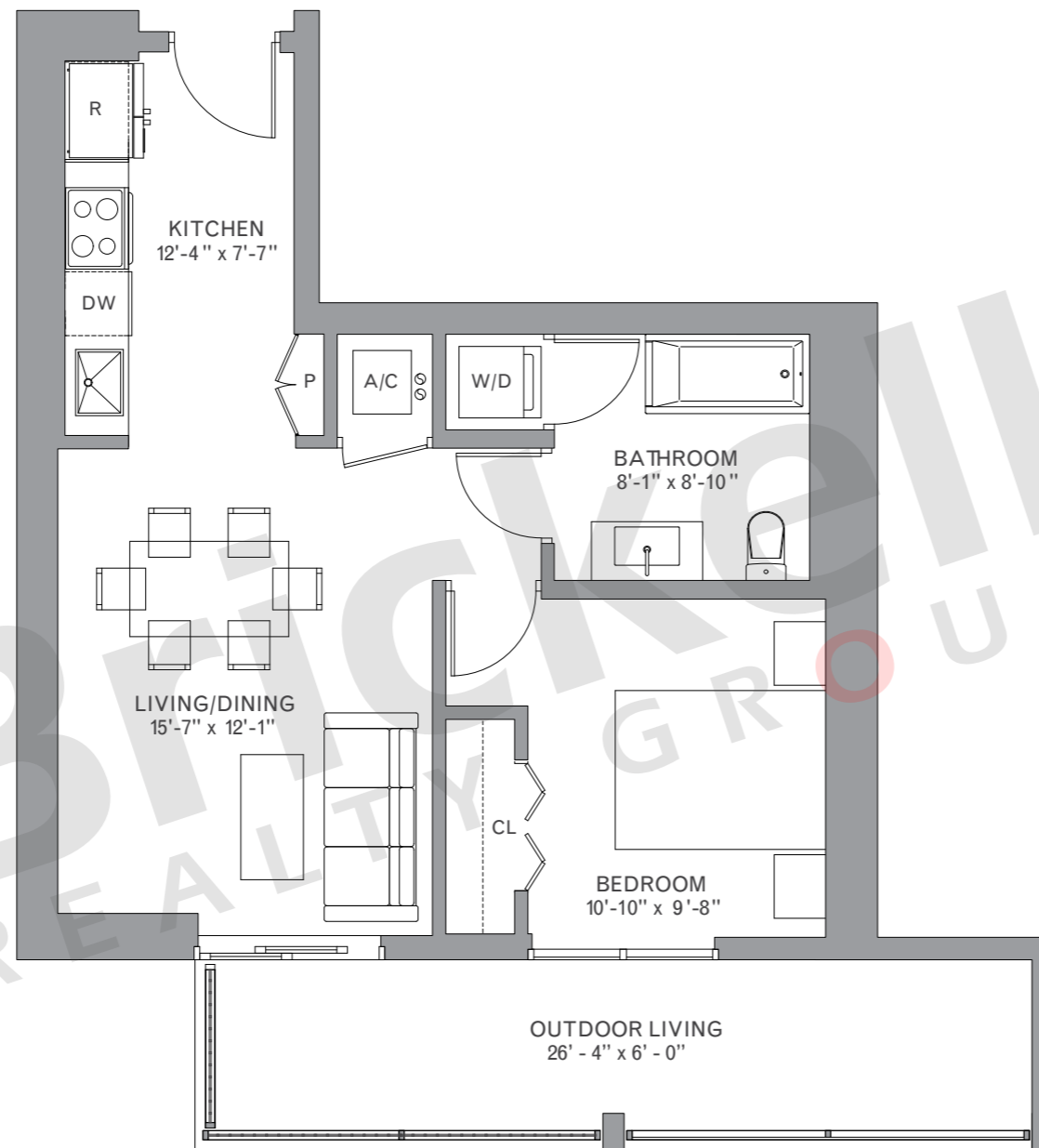
For your reference, the square footage area of the Unit, determined in accordance with those Unit boundaries as defined in the Declaration. Note that measurements of rooms set forth on this floor plan are generally taken at the greatest points of each given room (as if the room were a perfect rectangle), without regard for any cutouts. Accordingly, the area of the actual room will typically be smaller than the product obtained by multiplying the stated length times width.

Model A5 - Line 08

Floors: 2-5

1 Bedroom · 1 Bath

	SQ FT	M ²
Interior	609	56.6
Outdoor	158	14.7
Total	767	71.3



Brickell

REALTY GROUP

2071 NW 112th Avenue, Miami, FL 33172

www.brickell-realty.com/Metropica.html

Oral representation cannot be relied upon as correctly stating representations of the developer. Renderings of residences may not reflect the final products. Dimensions, specifications, improvements, rendering, plans, land uses, materials, amenities, prices, and availability are subject to change at the developer's discretion without notice.

Stated dimensions are approximate and measured to the exterior boundaries of the exterior walls and the centerline of interior demising walls which in fact vary from the dimensions that would be determined by using the description and definition of the "Unit" set forth in the Declaration which generally only includes the interior airspace between the perimeter walls (measuring from interior wall plane to interior wall plane) and excludes interior structural components.

For your reference, the square footage area of the Unit, determined in accordance with those Unit boundaries as defined in the Declaration. Note that measurements of rooms set forth on this floor plan are generally taken at the greatest points of each given room (as if the room were a perfect rectangle), without regard for any cutouts. Accordingly, the area of the actual room will typically be smaller than the product obtained by multiplying the stated length times width.

Model A6 - Line 17

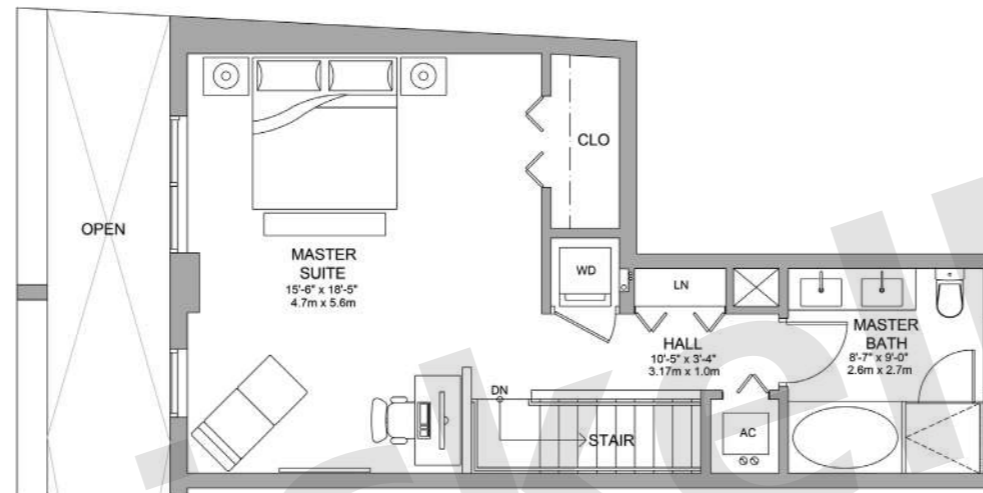
Floor: 2 & 4

Duplex · 1 Bedroom · 1.5 Baths

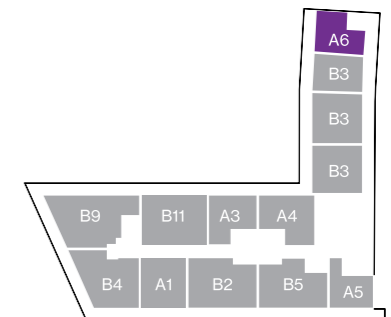
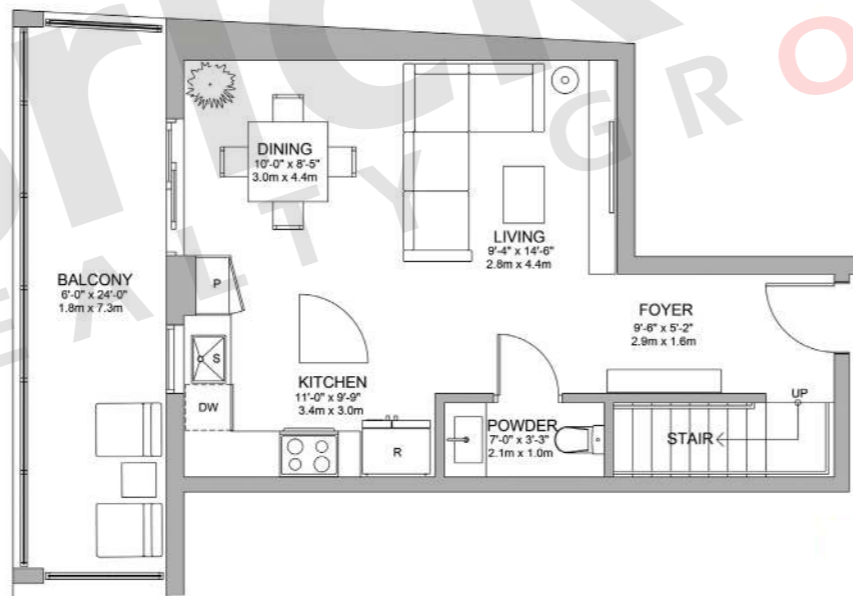
	SQ FT	M ²
Interior	916	85.1
Outdoor	166	15.4
Total	1,082	100.5



Upper



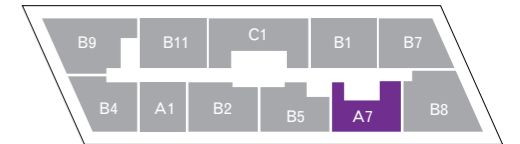
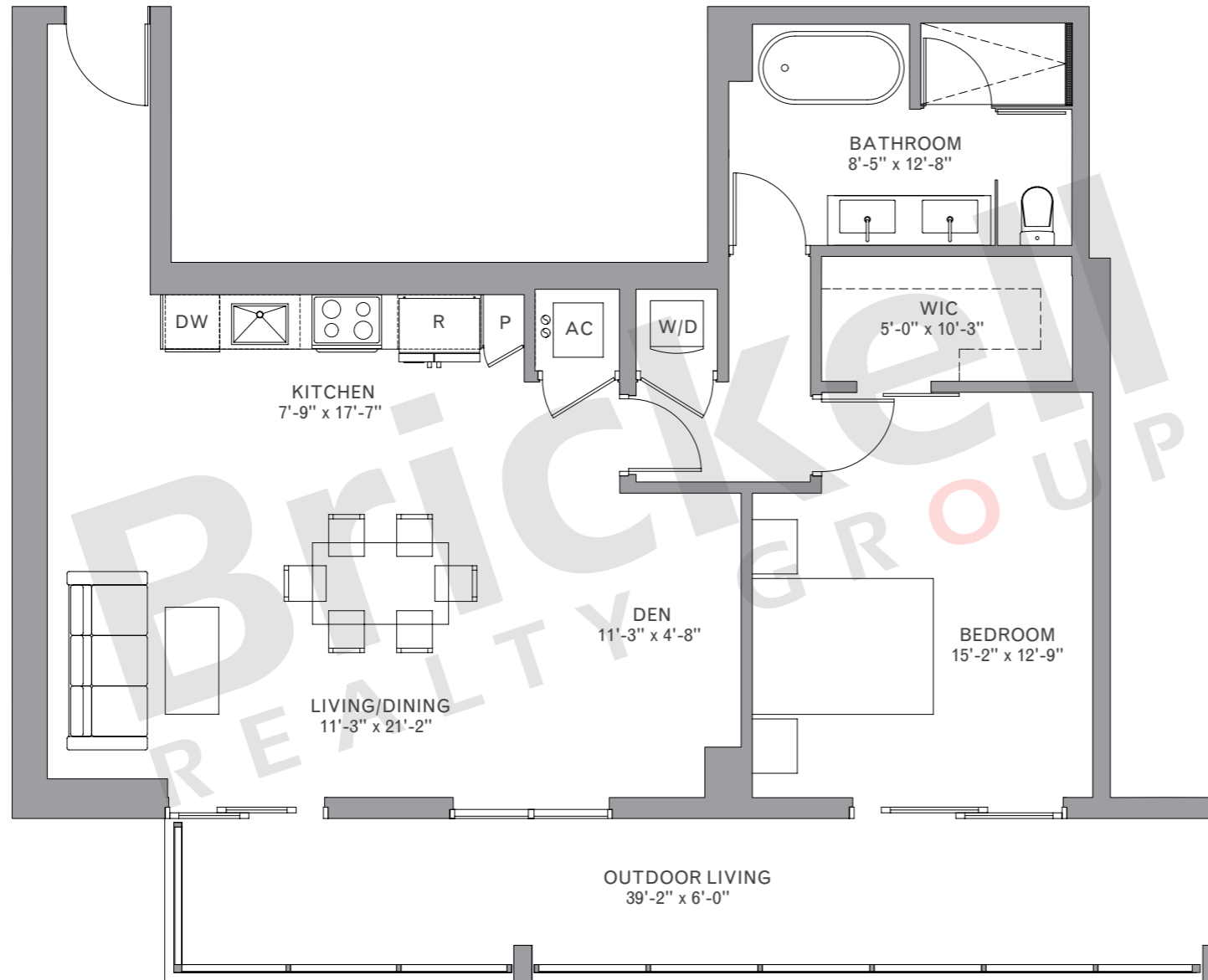
Lower



Model A7- Line 08
 Floor: 8

1 Bedroom · 1.5 Baths

	SQ FT	M ²
Interior	967	89.8
Outdoor	193	17.9
Total	1,160	107.7



Brickell
 REALTY GROUP

2071 NW 112th Avenue, Miami, FL 33172

www.brickell-realty.com/Metropica.html

Oral representation cannot be relied upon as correctly stating representations of the developer. Renderings of residences may not reflect the final products. Dimensions, specifications, improvements, rendering, plans, land uses, materials, amenities, prices, and availability are subject to change at the developer's discretion without notice.

Stated dimensions are approximate and measured to the exterior boundaries of the exterior walls and the centerline of interior demising walls which in fact vary from the dimensions that would be determined by using the description and definition of the "Unit" set forth in the Declaration which generally only includes the interior airspace between the perimeter walls (measuring from interior wall plane to interior wall plane) and excludes interior structural components.

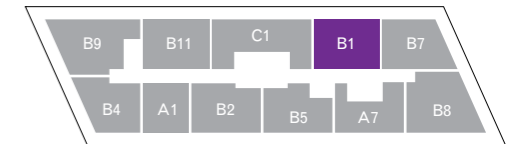
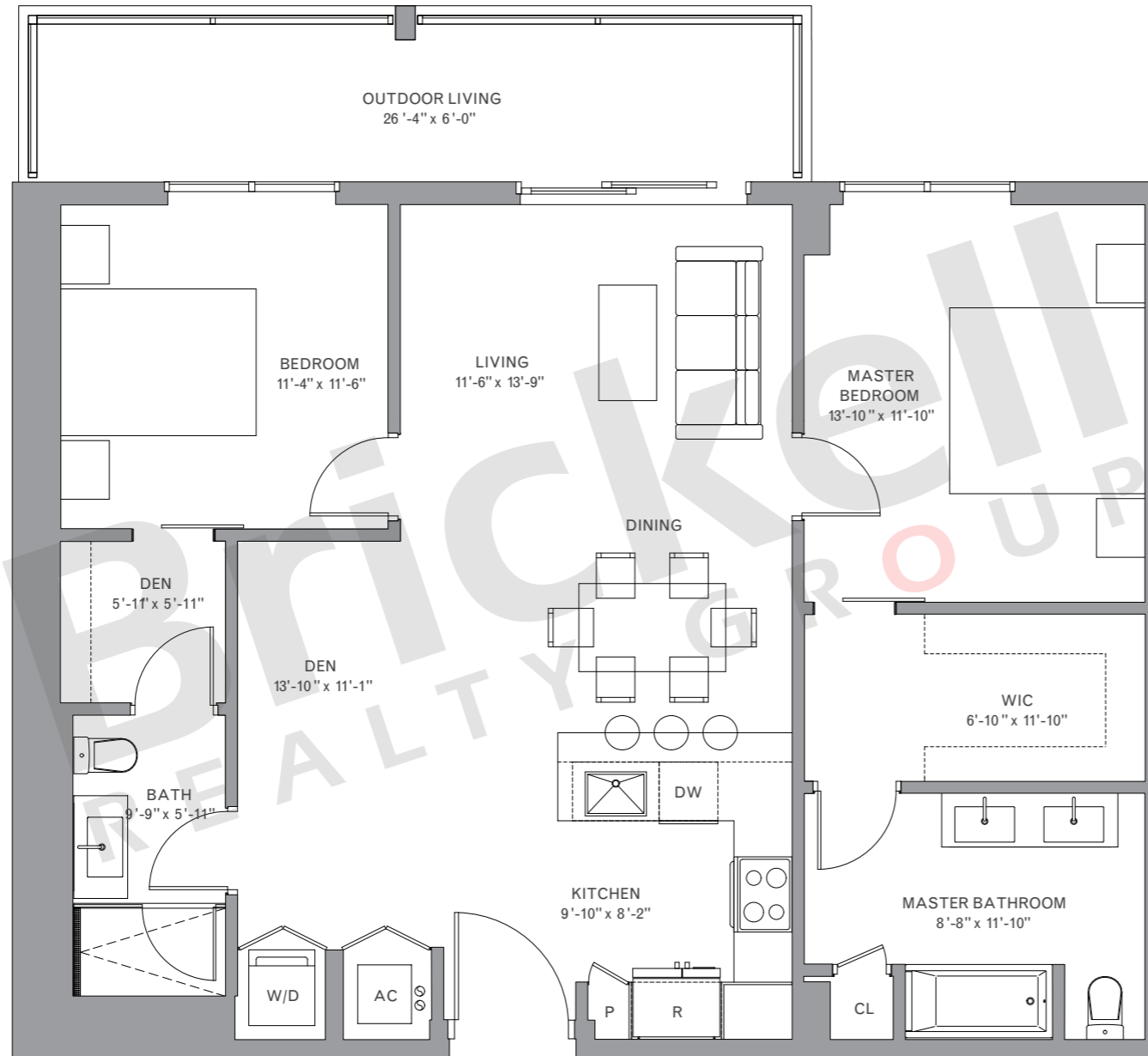
For your reference, the square footage area of the Unit, determined in accordance with those Unit boundaries as defined in the Declaration. Note that measurements of rooms set forth on this floor plan are generally taken at the greatest points of each given room (as if the room were a perfect rectangle), without regard for any cutouts. Accordingly, the area of the actual room will typically be smaller than the product obtained by multiplying the stated length times width.

Model B1 - Line 11

Floors: 2-26

2 Bedrooms · 2 Baths · Den

	SQ FT	M ²
Interior	1,118	103.9
Outdoor	156	14.5
Total	1,274	118.4



Brickell

REALTY GROUP

2071 NW 112th Avenue, Miami, FL 33172

www.brickell-realty.com/Metropica.html

Oral representation cannot be relied upon as correctly stating representations of the developer. Renderings of residences may not reflect the final products. Dimensions, specifications, improvements, rendering, plans, land uses, materials, amenities, prices, and availability are subject to change at the developer's discretion without notice.

Stated dimensions are approximate and measured to the exterior boundaries of the exterior walls and the centerline of interior demising walls which in fact vary from the dimensions that would be determined by using the description and definition of the "Unit" set forth in the Declaration which generally only includes the interior airspace between the perimeter walls (measuring from interior wall plane to interior wall plane) and excludes interior structural components.

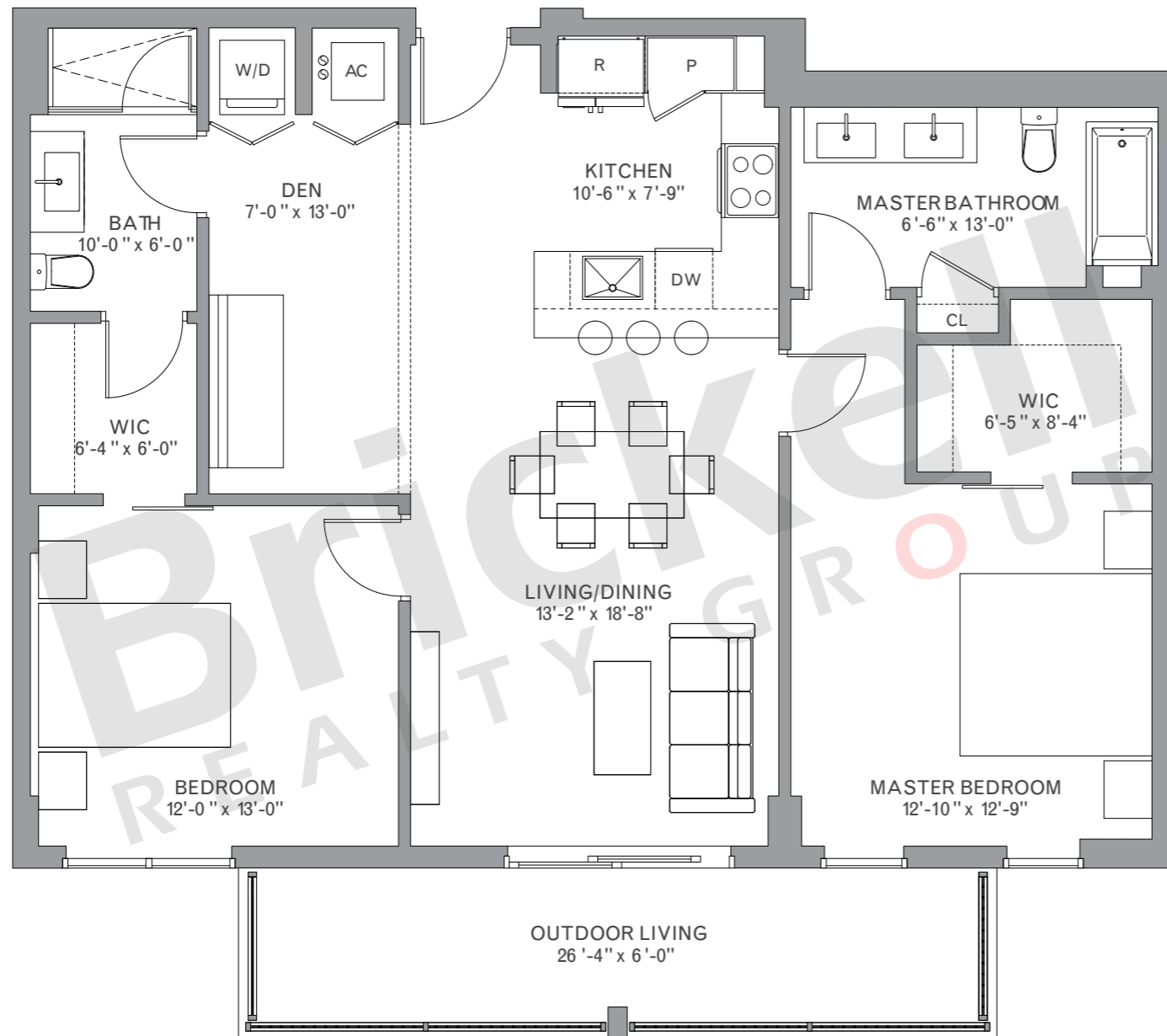
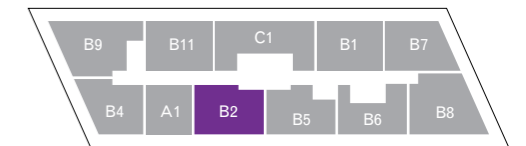
For your reference, the square footage area of the Unit, determined in accordance with those Unit boundaries as defined in the Declaration. Note that measurements of rooms set forth on this floor plan are generally taken at the greatest points of each given room (as if the room were a perfect rectangle), without regard for any cutouts. Accordingly, the area of the actual room will typically be smaller than the product obtained by multiplying the stated length times width.

Model B2- Line 06

Floors: 2-26

2 Bedrooms · 2 Baths · Den

	SQ FT	M ²
Interior	1,131	105.1
Outdoor	158	14.7
Total	1,289	119.8



Brickell

REALTY GROUP

2071 NW 112th Avenue, Miami, FL 33172

www.brickell-realty.com/Metropica.html

Oral representation cannot be relied upon as correctly stating representations of the developer. Renderings of residences may not reflect the final products. Dimensions, specifications, improvements, rendering, plans, land uses, materials, amenities, prices, and availability are subject to change at the developer's discretion without notice.

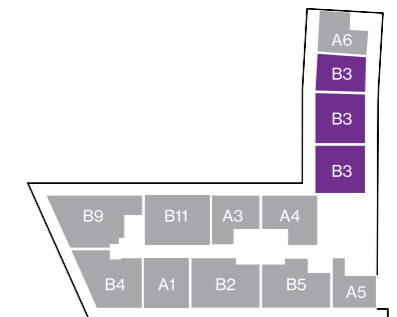
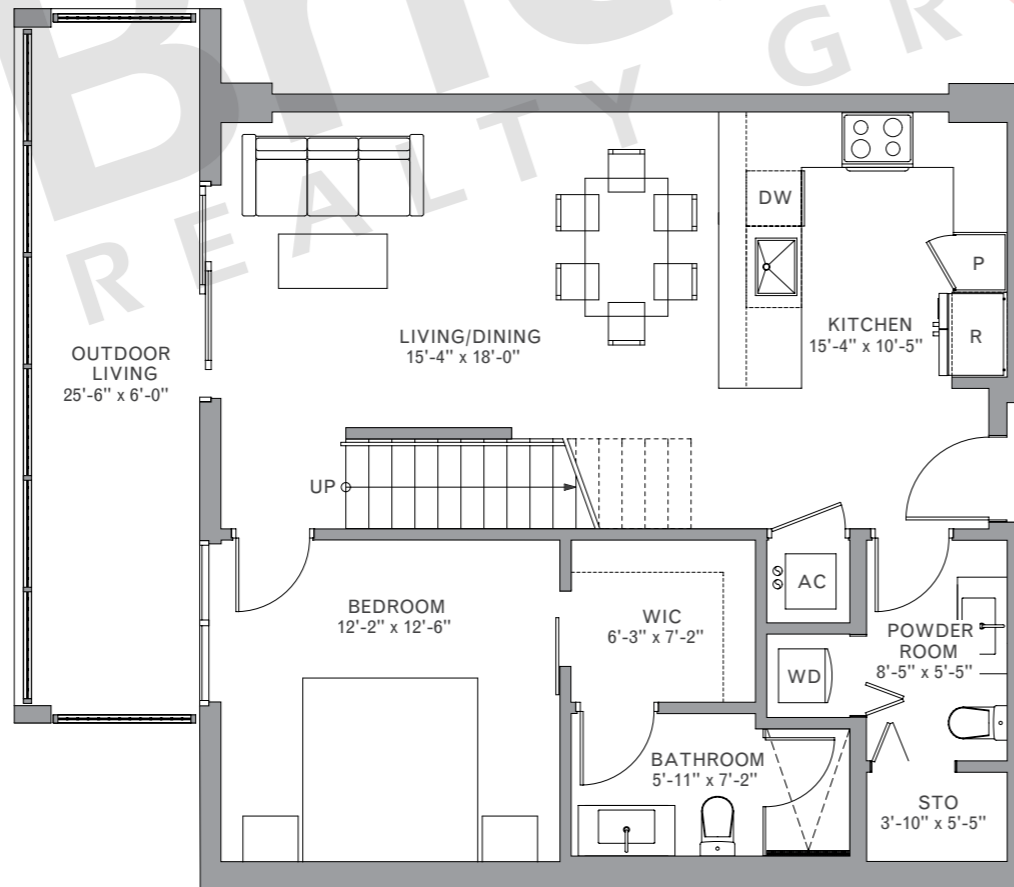
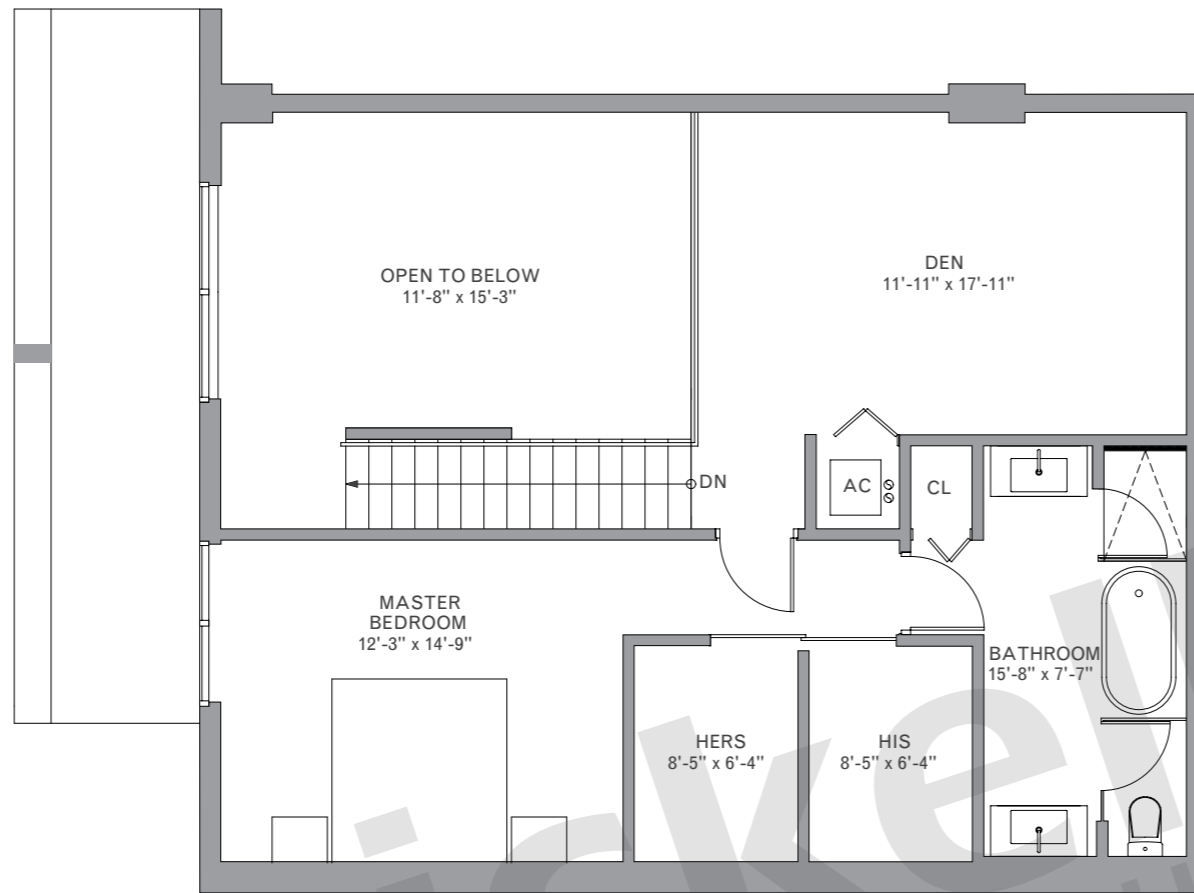
Stated dimensions are approximate and measured to the exterior boundaries of the exterior walls and the centerline of interior demising walls which in fact vary from the dimensions that would be determined by using the description and definition of the "Unit" set forth in the Declaration which generally only includes the interior airspace between the perimeter walls (measuring from interior wall plane to interior wall plane) and excludes interior structural components.

For your reference, the square footage area of the Unit, determined in accordance with those Unit boundaries as defined in the Declaration. Note that measurements of rooms set forth on this floor plan are generally taken at the greatest points of each given room (as if the room were a perfect rectangle), without regard for any cutouts. Accordingly, the area of the actual room will typically be smaller than the product obtained by multiplying the stated length times width.

Model B3 - Line 14, 15 & 16
Floors: 2 & 4

Duplex · 2 Bedrooms · 2.5 Baths · Den

	SQ FT	M ²
Interior	1,582	147.0
Outdoor	170	15.8
Total	1,752	162.8

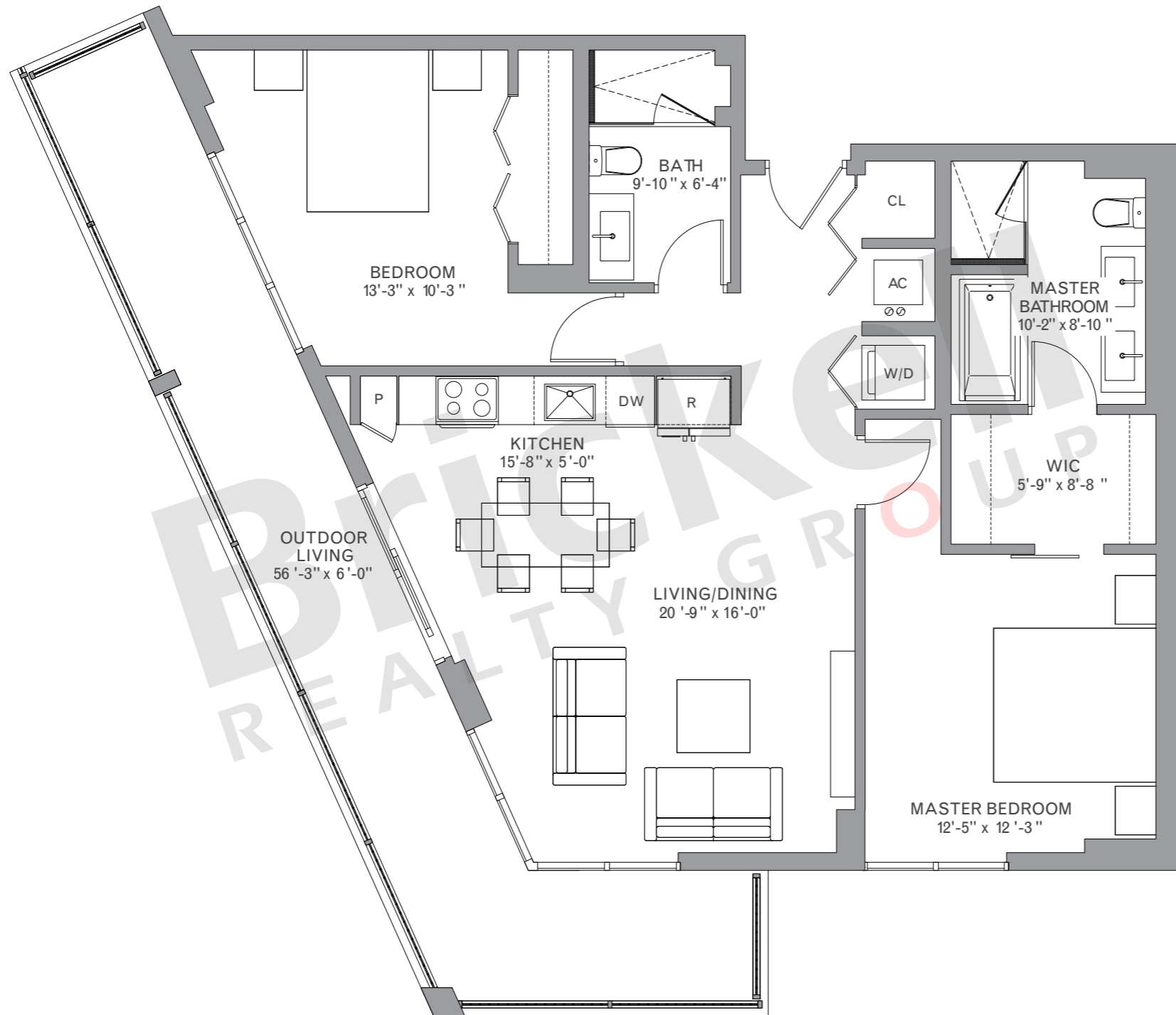
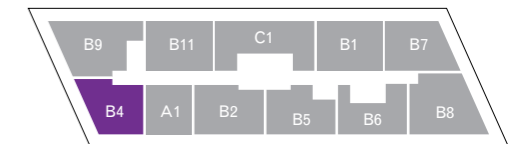


Model B4 - Line 04

Floors: 2-26

2 Bedrooms · 2 Baths

	SQ FT	M ²
Interior	1,078	100.1
Outdoor	315	29.3
Total	1,393	129.4



Brickell

REALTY GROUP

2071 NW 112th Avenue, Miami, FL 33172

www.brickell-realty.com/Metropica.html

Oral representation cannot be relied upon as correctly stating representations of the developer. Renderings of residences may not reflect the final products. Dimensions, specifications, improvements, rendering, plans, land uses, materials, amenities, prices, and availability are subject to change at the developer's discretion without notice.

Stated dimensions are approximate and measured to the exterior boundaries of the exterior walls and the centerline of interior demising walls which in fact vary from the dimensions that would be determined by using the description and definition of the "Unit" set forth in the Declaration which generally only includes the interior airspace between the perimeter walls (measuring from interior wall plane to interior wall plane) and excludes interior structural components.

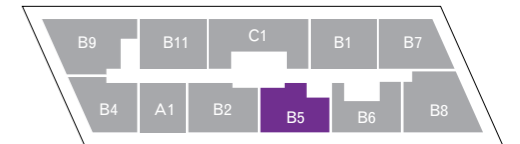
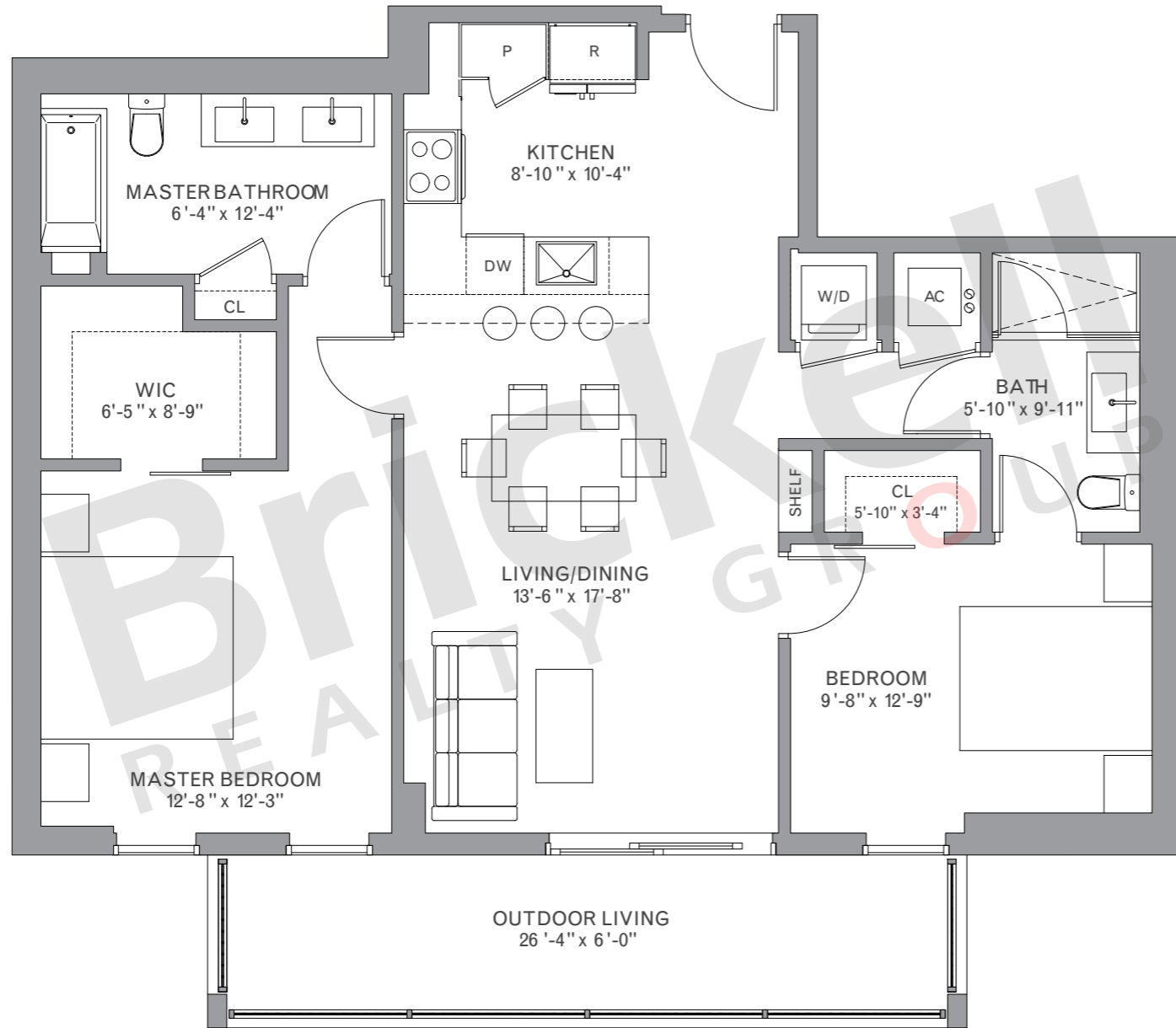
For your reference, the square footage area of the Unit, determined in accordance with those Unit boundaries as defined in the Declaration. Note that measurements of rooms set forth on this floor plan are generally taken at the greatest points of each given room (as if the room were a perfect rectangle), without regard for any cutouts. Accordingly, the area of the actual room will typically be smaller than the product obtained by multiplying the stated length times width.

Model B5- Line 07

Floors: 2-5, 8-26

2 Bedrooms · 2 Baths

	SQ FT	M ²
Interior	1,033	96.0
Outdoor	158	14.7
Total	1,191	110.7



Brickell

REALTY GROUP

2071 NW 112th Avenue, Miami, FL 33172

www.brickell-realty.com/Metropica.html

Oral representation cannot be relied upon as correctly stating representations of the developer. Renderings of residences may not reflect the final products. Dimensions, specifications, improvements, rendering, plans, land uses, materials, amenities, prices, and availability are subject to change at the developer's discretion without notice.

Stated dimensions are approximate and measured to the exterior boundaries of the exterior walls and the centerline of interior demising walls which in fact vary from the dimensions that would be determined by using the description and definition of the "Unit" set forth in the Declaration which generally only includes the interior airspace between the perimeter walls (measuring from interior wall plane to interior wall plane) and excludes interior structural components.

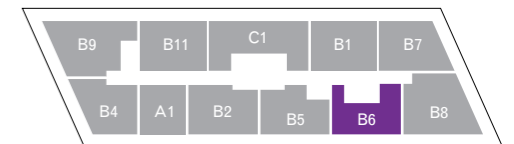
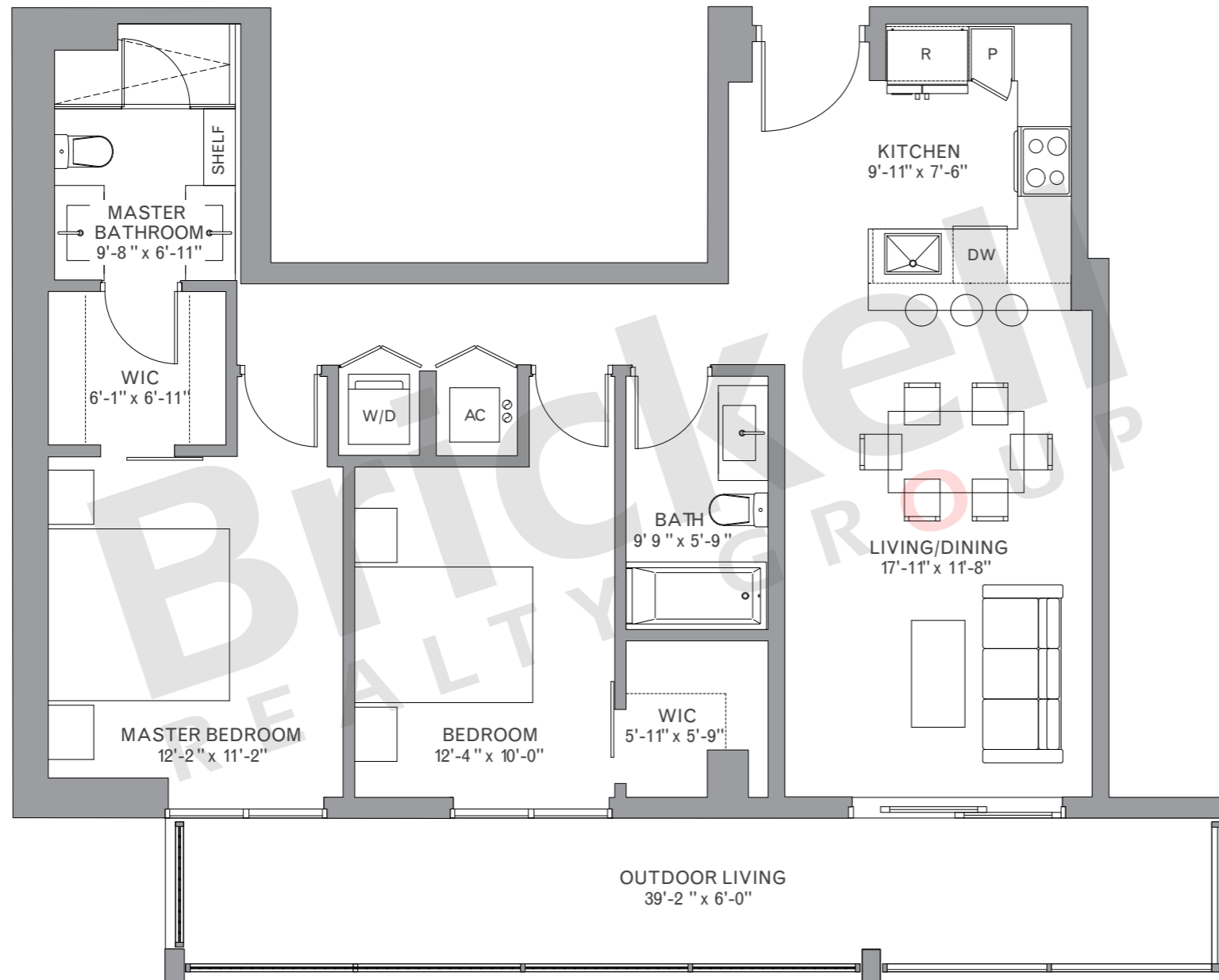
For your reference, the square footage area of the Unit, determined in accordance with those Unit boundaries as defined in the Declaration. Note that measurements of rooms set forth on this floor plan are generally taken at the greatest points of each given room (as if the room were a perfect rectangle), without regard for any cutouts. Accordingly, the area of the actual room will typically be smaller than the product obtained by multiplying the stated length times width.

Model B6- Line 08

Floors: 9-25

2 Bedrooms · 2 Baths

	SQ FT	M ²
Interior	996	92.5
Outdoor	235	21.8
Total	1,231	114.3

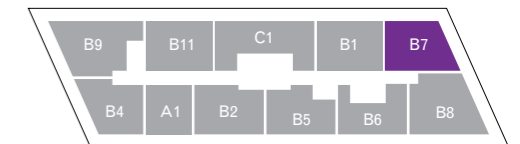
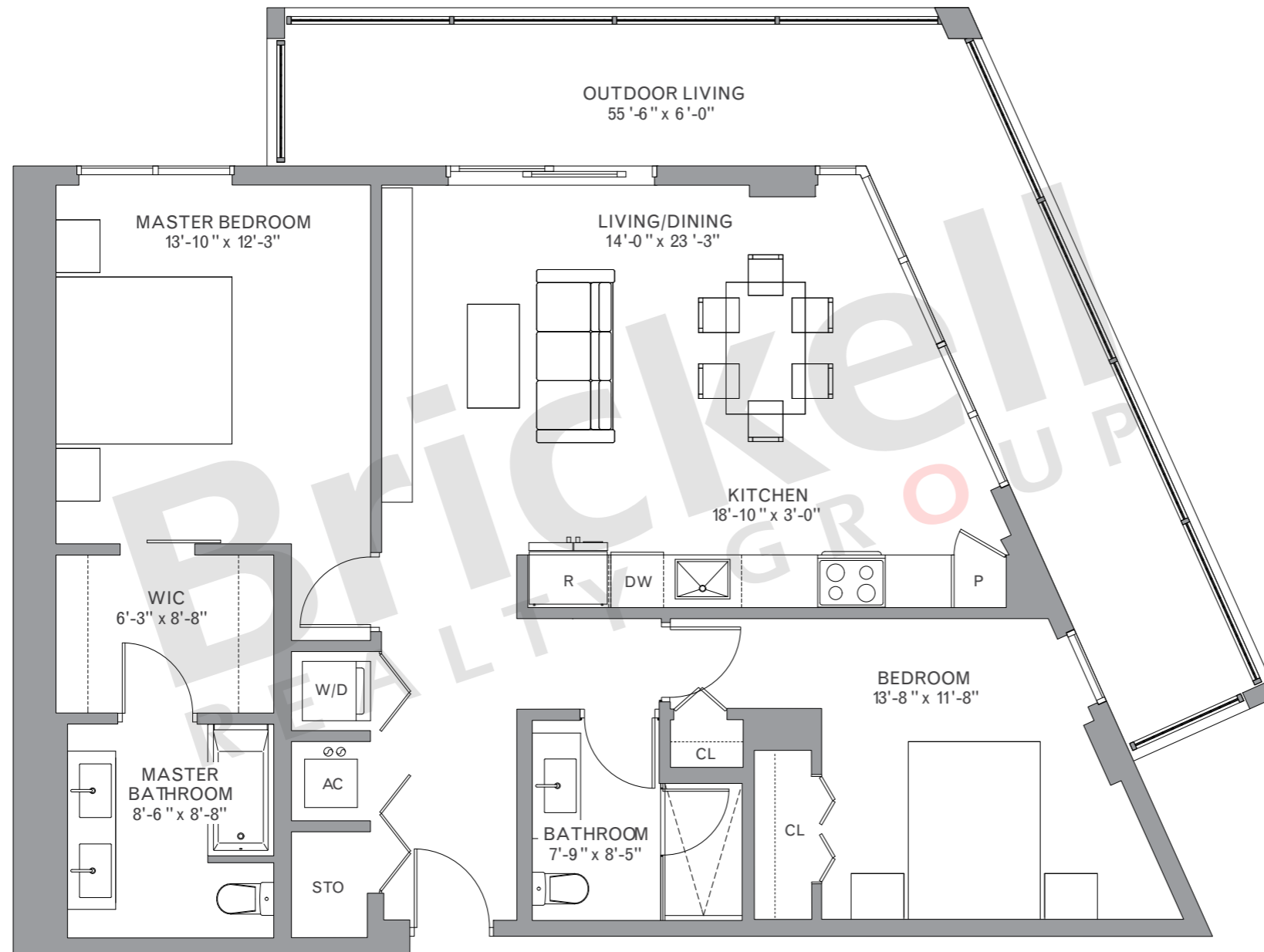


Model B7 - Line 10

Floors: 8-26

2 Bedrooms · 2 Baths

	SQ FT	M ²
Interior	1,109	103.0
Outdoor	306	28.4
Total	1,415	131.4

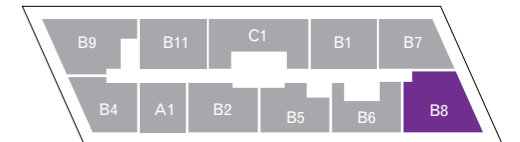
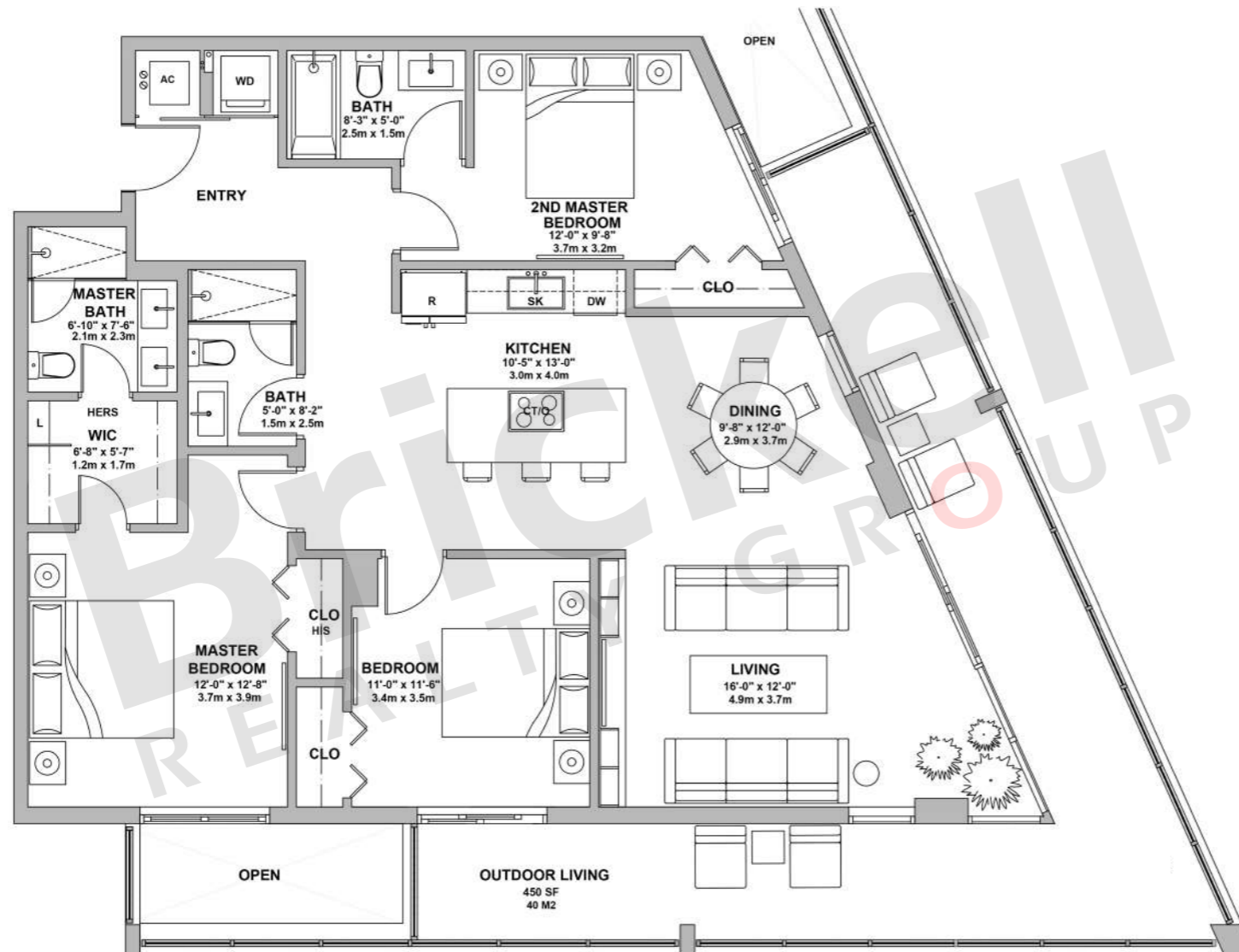


Model B8- Line 09

Floors: 8-26

3 Bedrooms · 3 Baths

	SQ FT	M ²
Interior	1,306	121.3
Outdoor	450	41.8
Total	1,756	163.1



Brickell

REALTY GROUP

2071 NW 112th Avenue, Miami, FL 33172

www.brickell-realty.com/Metropica.html

Oral representation cannot be relied upon as correctly stating representations of the developer. Renderings of residences may not reflect the final products. Dimensions, specifications, improvements, rendering, plans, land uses, materials, amenities, prices, and availability are subject to change at the developer's discretion without notice.

Stated dimensions are approximate and measured to the exterior boundaries of the exterior walls and the centerline of interior demising walls which in fact vary from the dimensions that would be determined by using the description and definition of the "Unit" set forth in the Declaration which generally only includes the interior airspace between the perimeter walls (measuring from interior wall plane to interior wall plane) and excludes interior structural components.

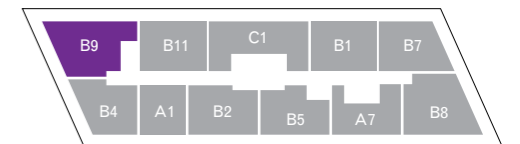
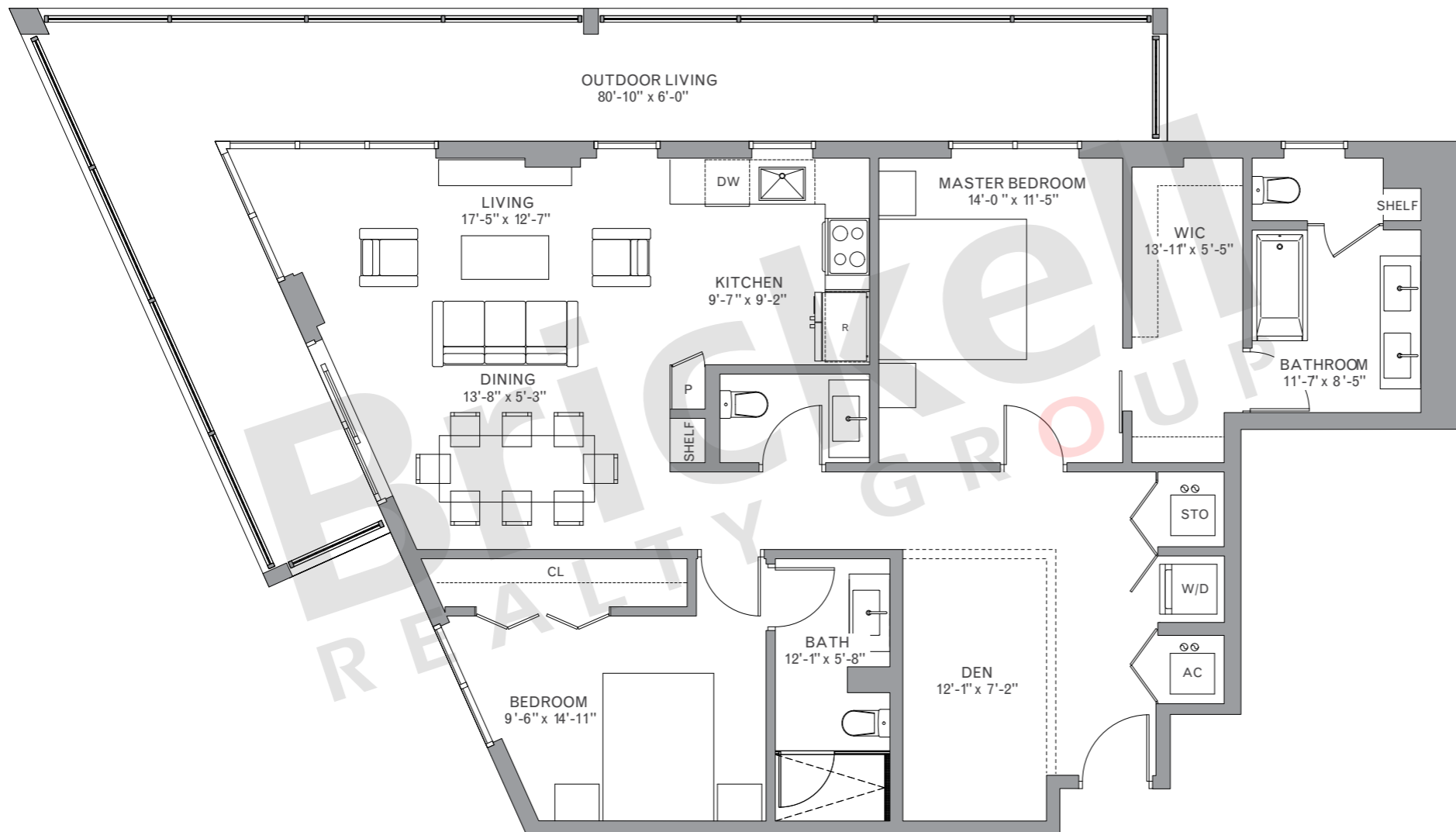
For your reference, the square footage area of the Unit, determined in accordance with those Unit boundaries as defined in the Declaration. Note that measurements of rooms set forth on this floor plan are generally taken at the greatest points of each given room (as if the room were a perfect rectangle), without regard for any cutouts. Accordingly, the area of the actual room will typically be smaller than the product obtained by multiplying the stated length times width.

Model B9 - Line 03

Floors: 2-5, 9-25

2 Bedrooms · 2.5 Baths · Den

	SQ FT	M ²
Interior	1,306	121.3
Outdoor	430	39.9
Total	1,736	161.2

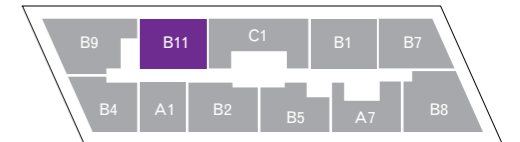
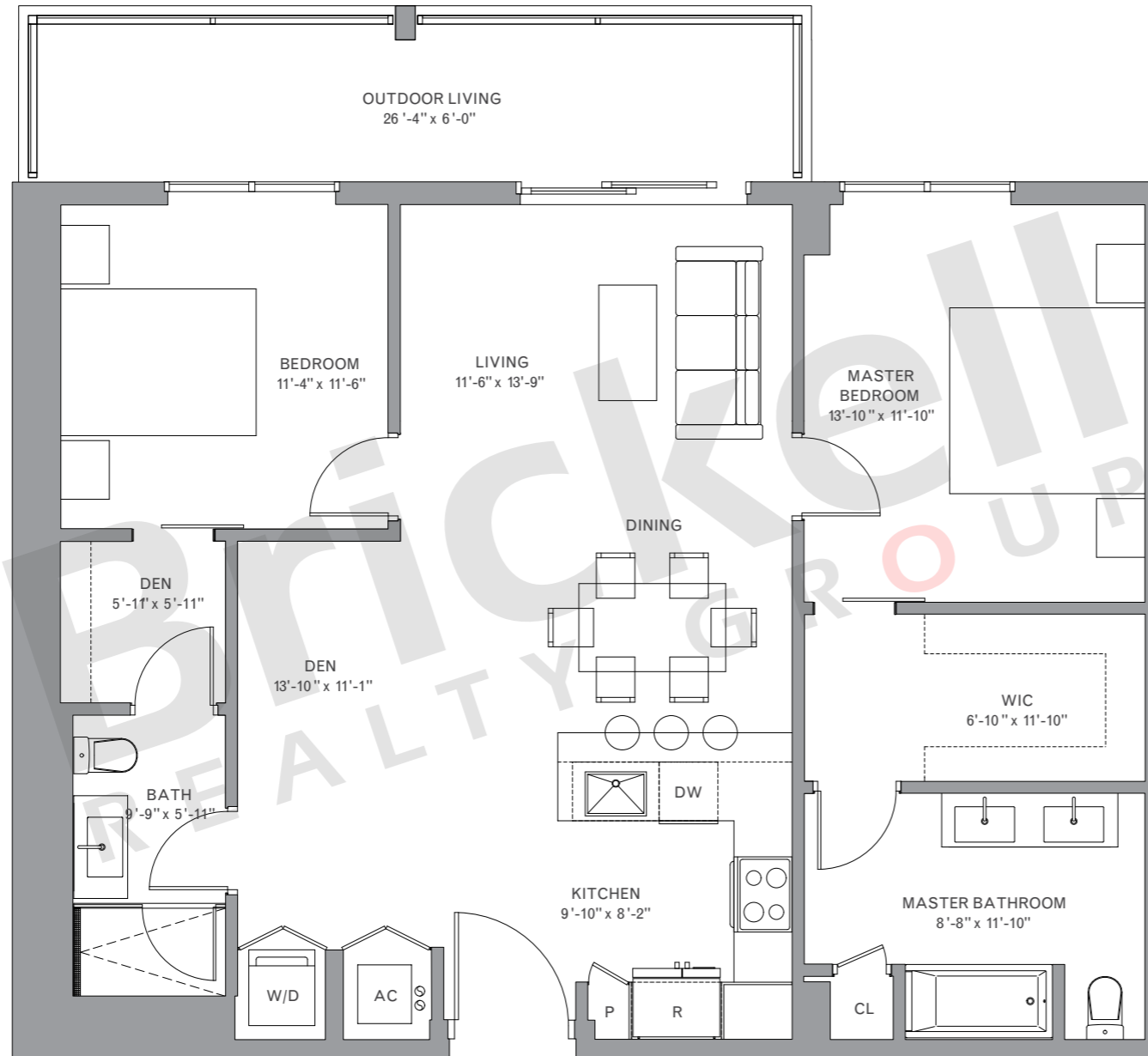


Model B11 - Line 02

Floors: 2-26

2 Bedrooms · 2 Baths · Den

	SQ FT	M ²
Interior	1,118	103.9
Outdoor	156	14.5
Total	1,274	118.4



Brickell

REALTY GROUP

2071 NW 112th Avenue, Miami, FL 33172

www.brickell-realty.com/Metropica.html

Oral representation cannot be relied upon as correctly stating representations of the developer. Renderings of residences may not reflect the final products. Dimensions, specifications, improvements, rendering, plans, land uses, materials, amenities, prices, and availability are subject to change at the developer's discretion without notice.

Stated dimensions are approximate and measured to the exterior boundaries of the exterior walls and the centerline of interior demising walls which in fact vary from the dimensions that would be determined by using the description and definition of the "Unit" set forth in the Declaration which generally only includes the interior airspace between the perimeter walls (measuring from interior wall plane to interior wall plane) and excludes interior structural components.

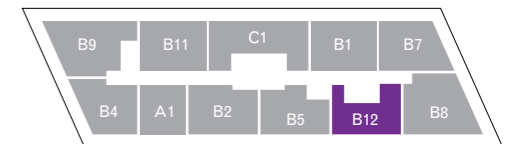
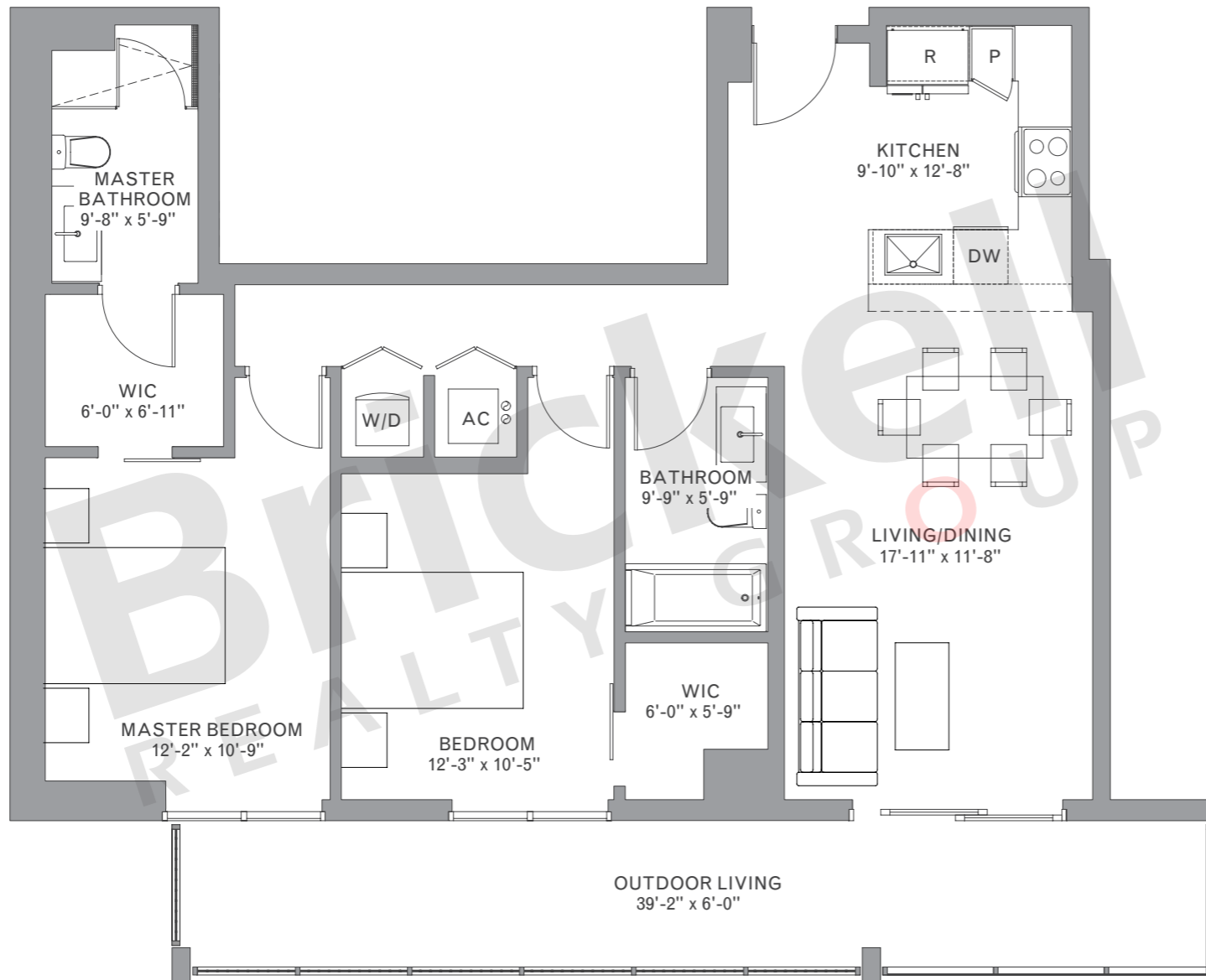
For your reference, the square footage area of the Unit, determined in accordance with those Unit boundaries as defined in the Declaration. Note that measurements of rooms set forth on this floor plan are generally taken at the greatest points of each given room (as if the room were a perfect rectangle), without regard for any cutouts. Accordingly, the area of the actual room will typically be smaller than the product obtained by multiplying the stated length times width.

Model B12- Line 08

Floors: 26

2 Bedrooms · 2 Baths

	SQ FT	M ²
Interior	982	91.2
Outdoor	235	21.8
Total	1,217	113.0



Brickell

REALTY GROUP

2071 NW 112th Avenue, Miami, FL 33172

www.brickell-realty.com/Metropica.html

Oral representation cannot be relied upon as correctly stating representations of the developer. Renderings of residences may not reflect the final products. Dimensions, specifications, improvements, rendering, plans, land uses, materials, amenities, prices, and availability are subject to change at the developer's discretion without notice.

Stated dimensions are approximate and measured to the exterior boundaries of the exterior walls and the centerline of interior demising walls which in fact vary from the dimensions that would be determined by using the description and definition of the "Unit" set forth in the Declaration which generally only includes the interior airspace between the perimeter walls (measuring from interior wall plane to interior wall plane) and excludes interior structural components.

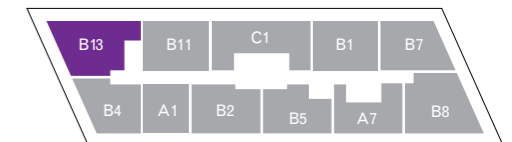
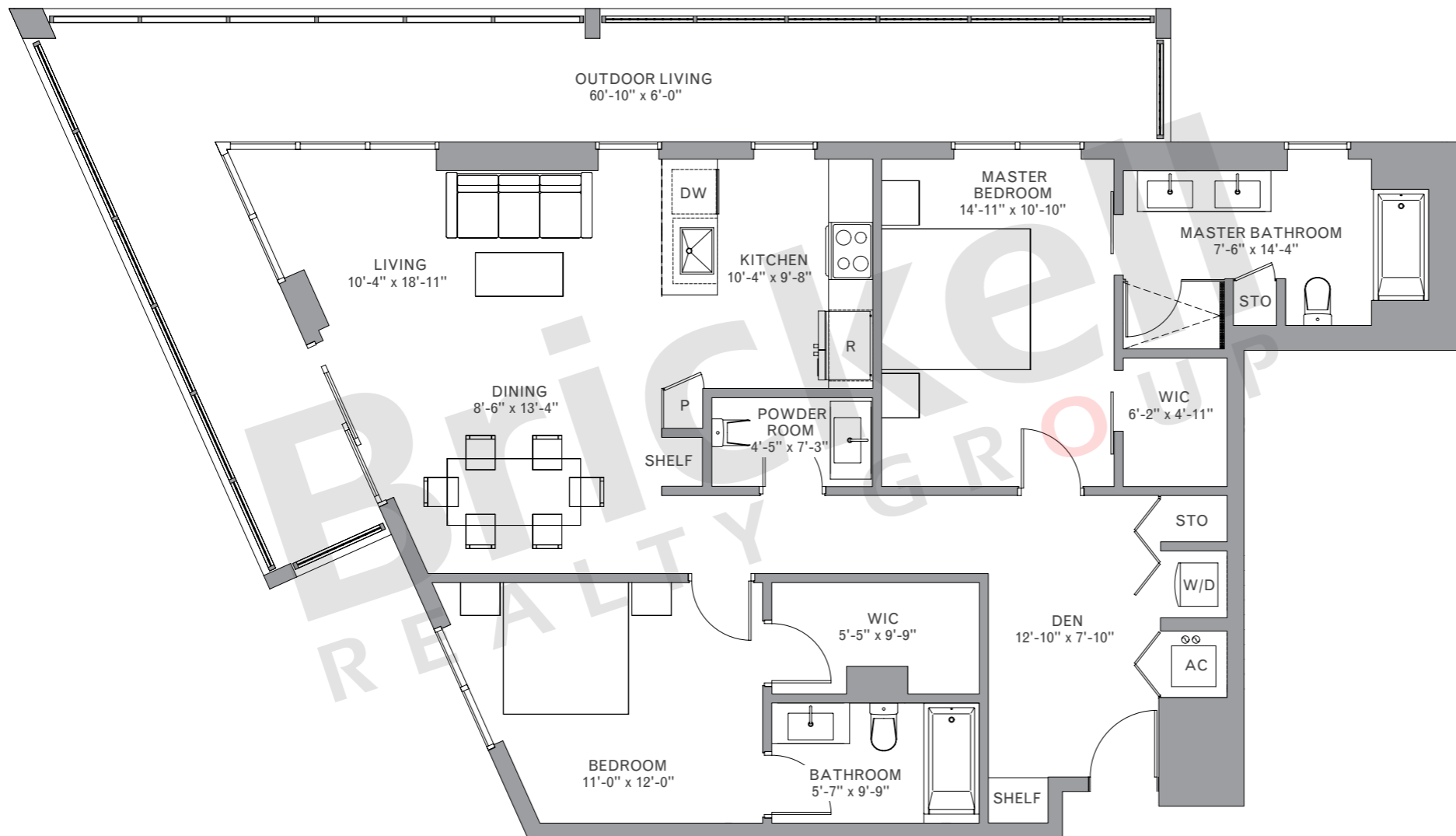
For your reference, the square footage area of the Unit, determined in accordance with those Unit boundaries as defined in the Declaration. Note that measurements of rooms set forth on this floor plan are generally taken at the greatest points of each given room (as if the room were a perfect rectangle), without regard for any cutouts. Accordingly, the area of the actual room will typically be smaller than the product obtained by multiplying the stated length times width.

Model B13 - Line 03

Floor: 8

2 Bedrooms · 2.5 Baths · Den

	SQ FT	M ²
Interior	1,271	118.1
Outdoor	429	39.9
Total	1,700	158.0



Brickell

REALTY GROUP

2071 NW 112th Avenue, Miami, FL 33172

www.brickell-realty.com/Metropica.html

Oral representation cannot be relied upon as correctly stating representations of the developer. Renderings of residences may not reflect the final products. Dimensions, specifications, improvements, rendering, plans, land uses, materials, amenities, prices, and availability are subject to change at the developer's discretion without notice.

Stated dimensions are approximate and measured to the exterior boundaries of the exterior walls and the centerline of interior demising walls which in fact vary from the dimensions that would be determined by using the description and definition of the "Unit" set forth in the Declaration which generally only includes the interior airspace between the perimeter walls (measuring from interior wall plane to interior wall plane) and excludes interior structural components.

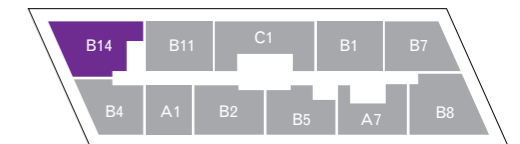
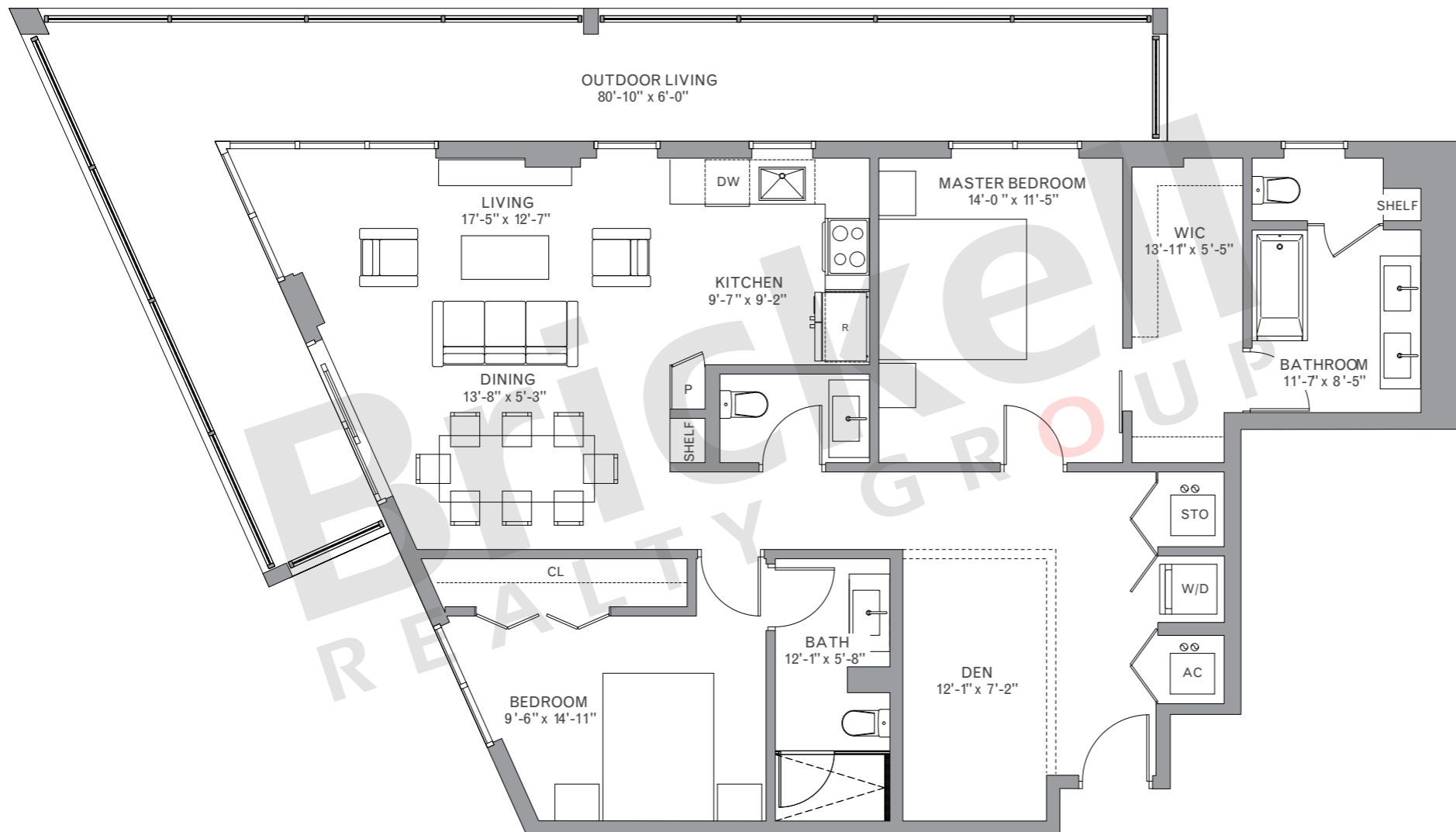
For your reference, the square footage area of the Unit, determined in accordance with those Unit boundaries as defined in the Declaration. Note that measurements of rooms set forth on this floor plan are generally taken at the greatest points of each given room (as if the room were a perfect rectangle), without regard for any cutouts. Accordingly, the area of the actual room will typically be smaller than the product obtained by multiplying the stated length times width.

Model B14 - Line 03

Floors: 6, 26

2 Bedrooms · 2.5 Baths · Den

	SQ FT	M ²
Interior	1,286	121.3
Outdoor	429	39.9
Total	1,736	161.2

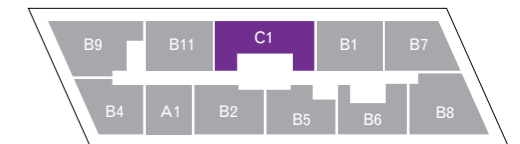
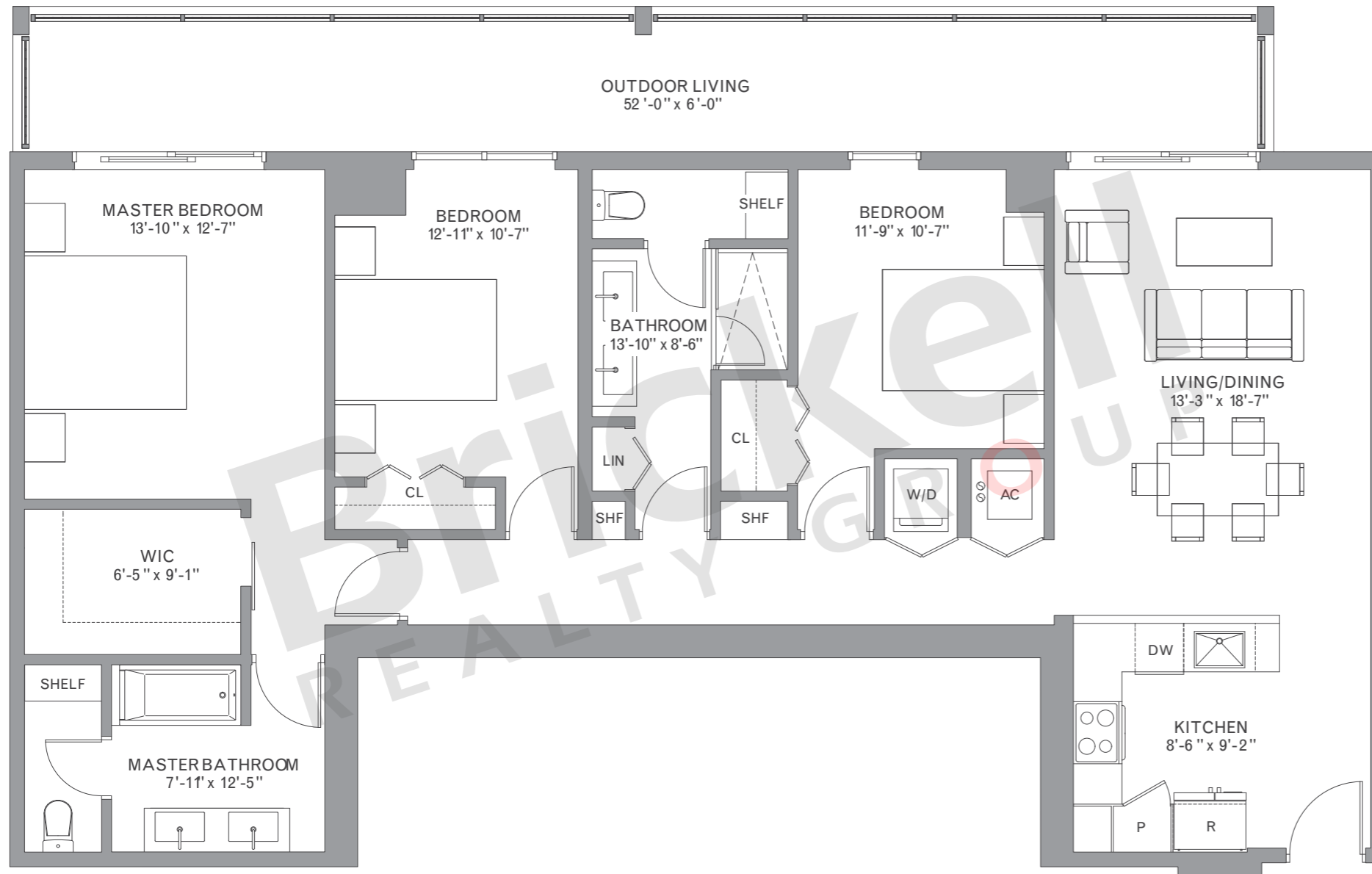


Model C1 - Line 01

Floors: 8-26

3 Bedrooms · 2 Baths

	SQ FT	M ²
Interior	1,384	128.6
Outdoor	312	29.0
Total	1,696	157.6



Brickell

REALTY GROUP

2071 NW 112th Avenue, Miami, FL 33172

www.brickell-realty.com/Metropica.html

Oral representation cannot be relied upon as correctly stating representations of the developer. Renderings of residences may not reflect the final products. Dimensions, specifications, improvements, rendering, plans, land uses, materials, amenities, prices, and availability are subject to change at the developer's discretion without notice.

Stated dimensions are approximate and measured to the exterior boundaries of the exterior walls and the centerline of interior demising walls which in fact vary from the dimensions that would be determined by using the description and definition of the "Unit" set forth in the Declaration which generally only includes the interior airspace between the perimeter walls (measuring from interior wall plane to interior wall plane) and excludes interior structural components.

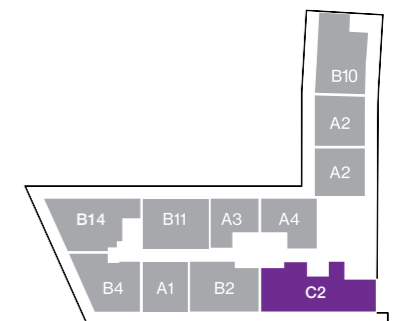
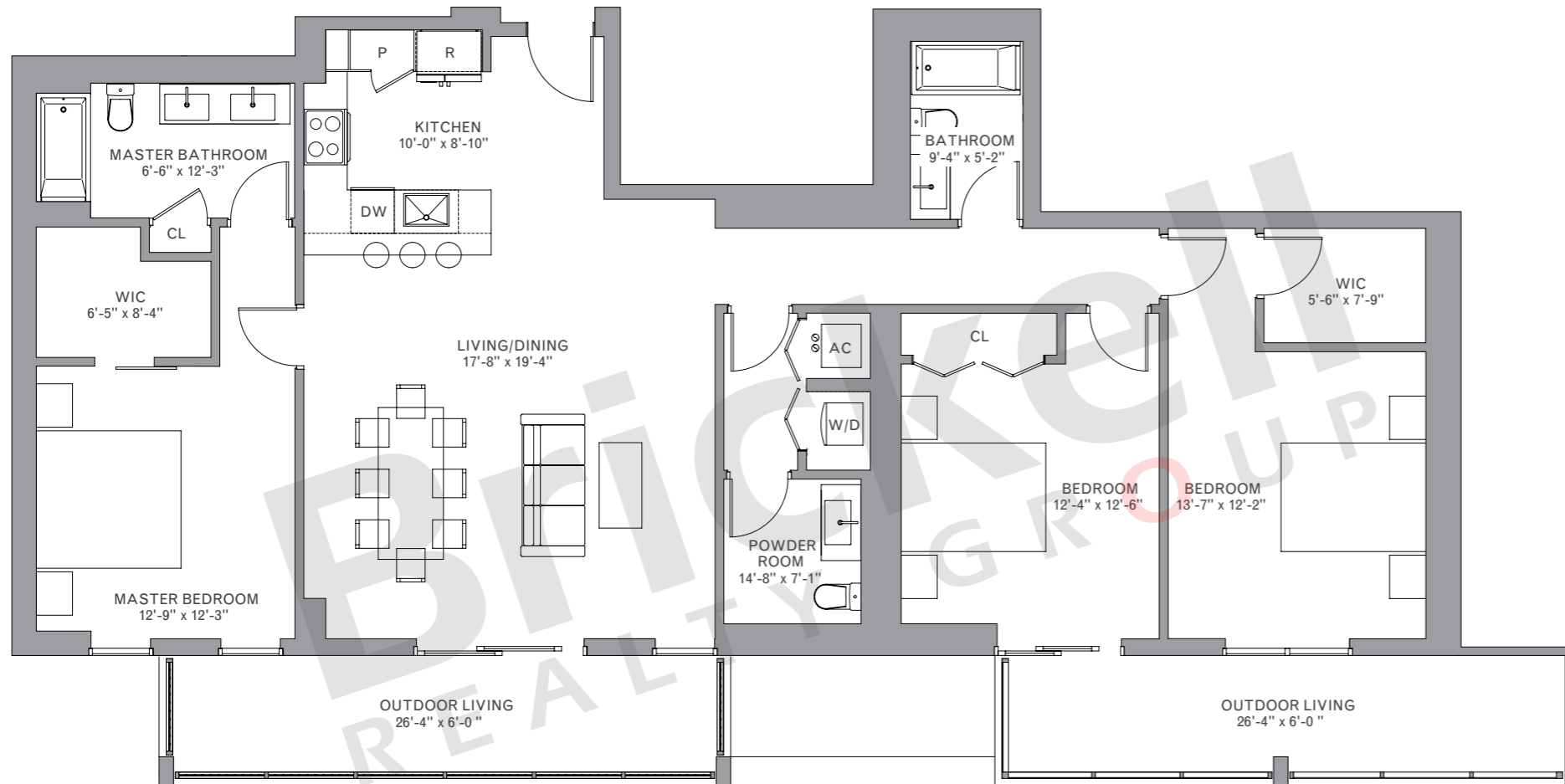
For your reference, the square footage area of the Unit, determined in accordance with those Unit boundaries as defined in the Declaration. Note that measurements of rooms set forth on this floor plan are generally taken at the greatest points of each given room (as if the room were a perfect rectangle), without regard for any cutouts. Accordingly, the area of the actual room will typically be smaller than the product obtained by multiplying the stated length times width.

Model C2 - Line 07

Floor: 6

3 Bedrooms · 2.5 Baths

	SQ FT	M ²
Interior	1,629	151.3
Outdoor	158	14.7
Total	1,787	166.0

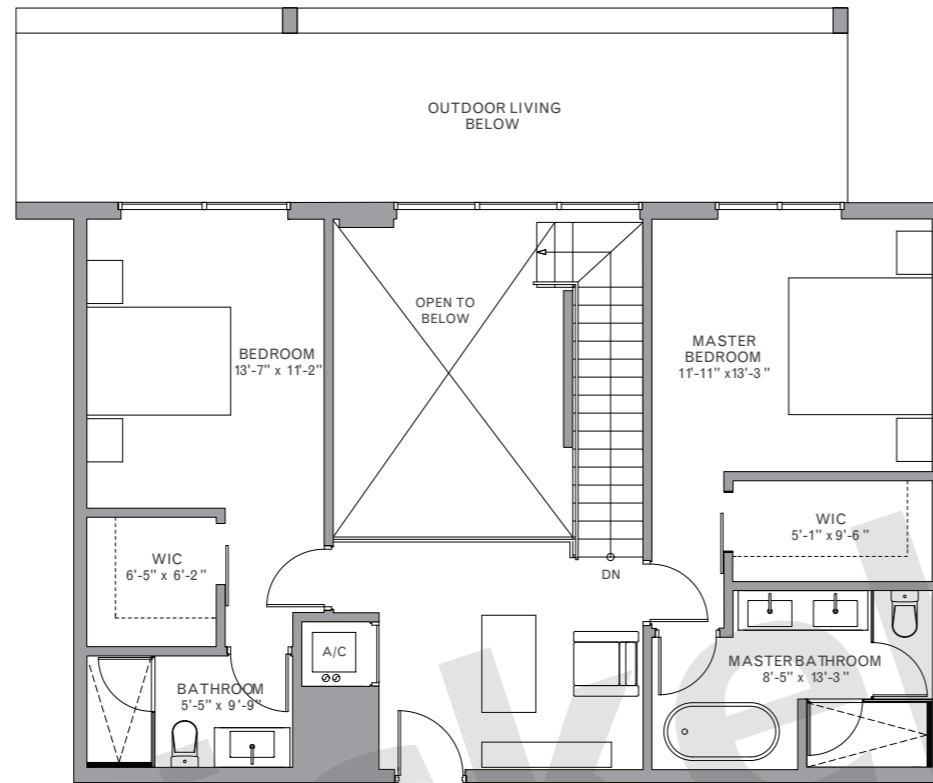


Model P1- Line 11
Floor: 27

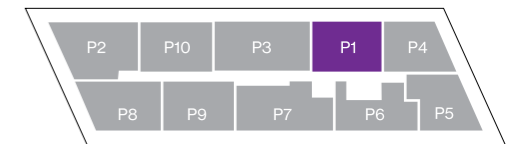
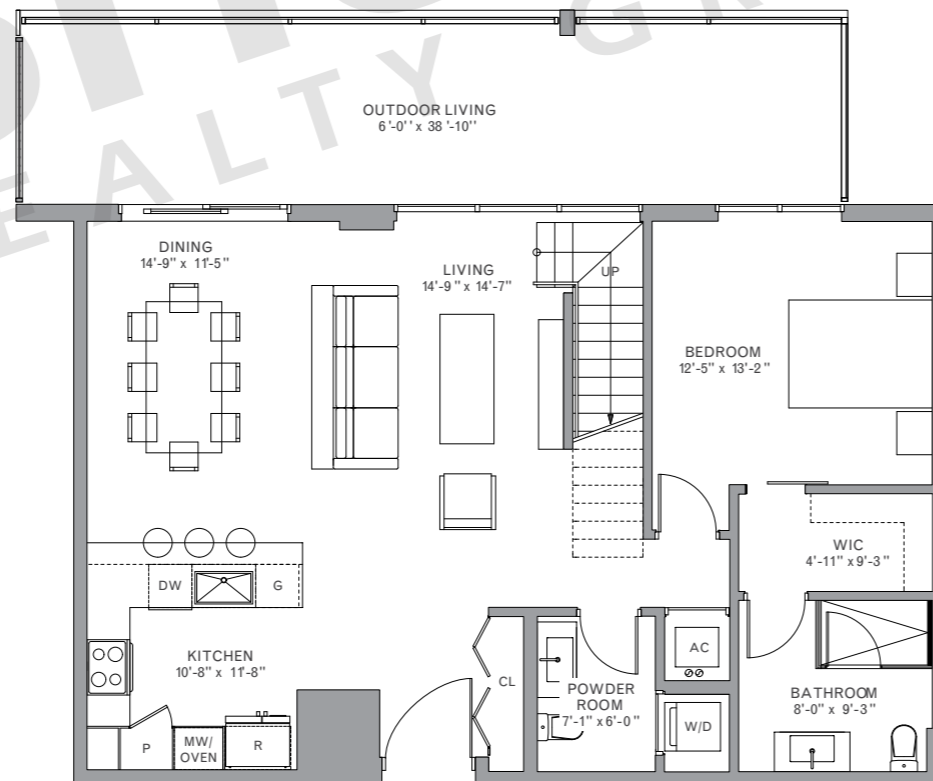
Duplex · 3 Bedrooms · 3.5 Baths

	SQ FT	M ²
Interior	1,876	174.3
Outdoor	347	32.2
Total	2,223	206.5

Upper



Lower

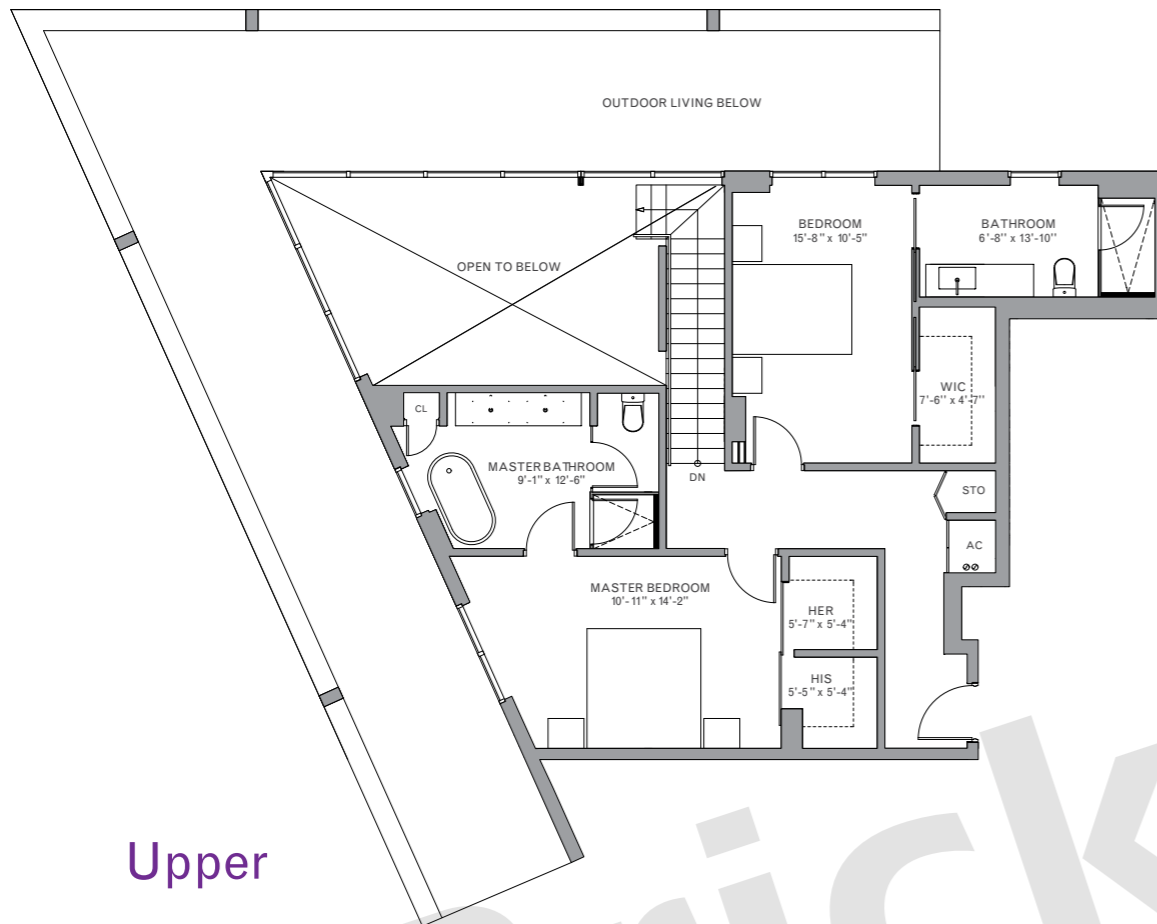
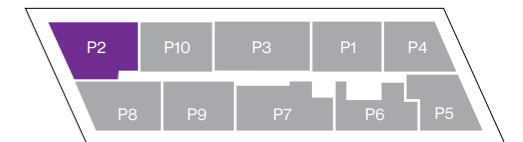


Model P2- Line 03

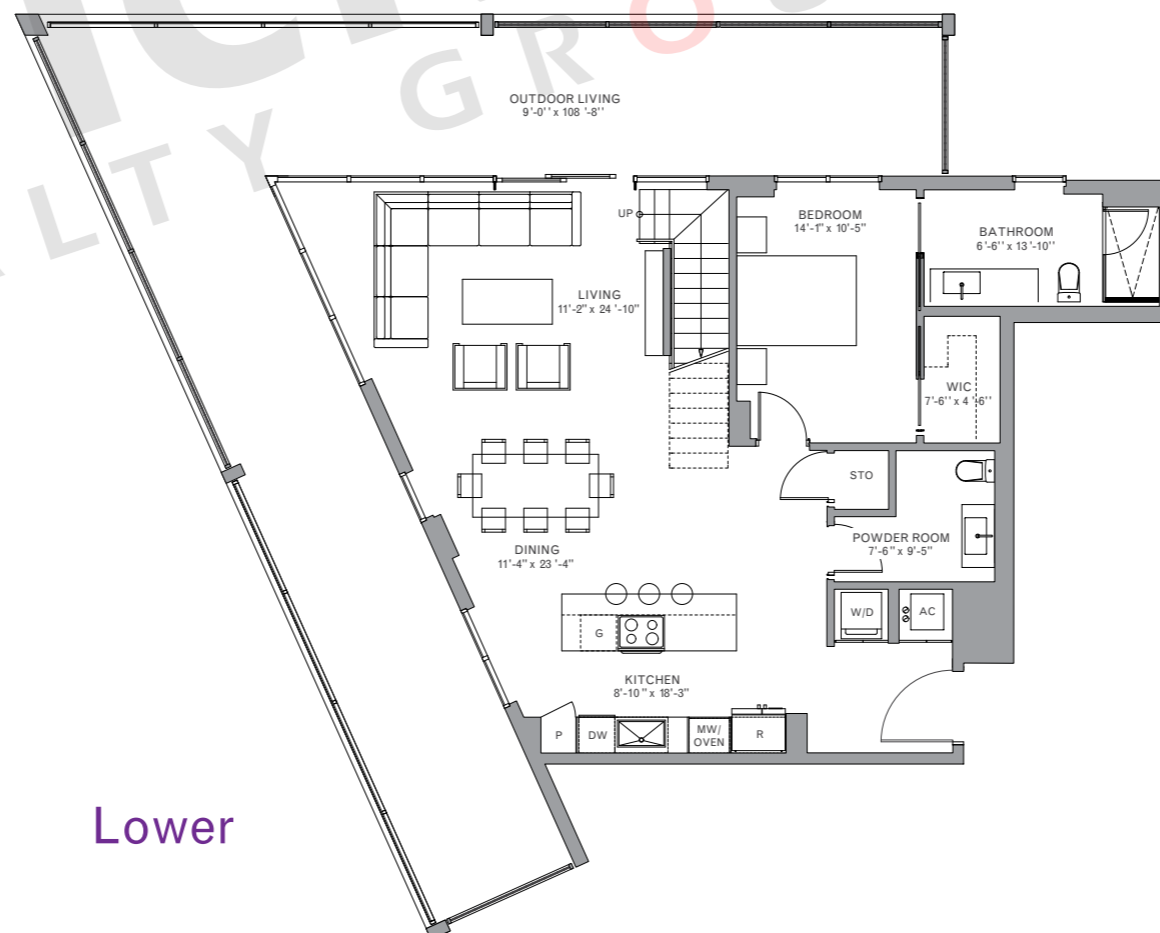
Floor: 27

Duplex · 3 Bedrooms · 3.5 Baths

	SQ FT	M ²
Interior	2,058	191.2
Outdoor	850	79.0
Total	2,908	270.2



Upper



Lower

Brickell
REALTY GROUP

2071 NW 112th Avenue, Miami, FL 33172

www.brickell-realty.com/Metropica.html

Oral representation cannot be relied upon as correctly stating representations of the developer. Renderings of residences may not reflect the final products. Dimensions, specifications, improvements, rendering, plans, land uses, materials, amenities, prices, and availability are subject to change at the developer's discretion without notice.

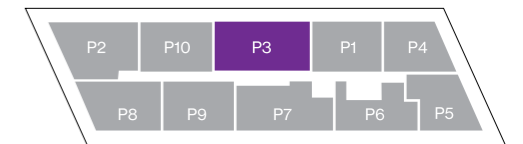
Stated dimensions are approximate and measured to the exterior boundaries of the exterior walls and the centerline of interior demising walls which in fact vary from the dimensions that would be determined by using the description and definition of the "Unit" set forth in the Declaration which generally only includes the interior airspace between the perimeter walls (measuring from interior wall plane to interior wall plane) and excludes interior structural components.

For your reference, the square footage area of the Unit, determined in accordance with those Unit boundaries as defined in the Declaration. Note that measurements of rooms set forth on this floor plan are generally taken at the greatest points of each given room (as if the room were a perfect rectangle), without regard for any cutouts. Accordingly, the area of the actual room will typically be smaller than the product obtained by multiplying the stated length times width.

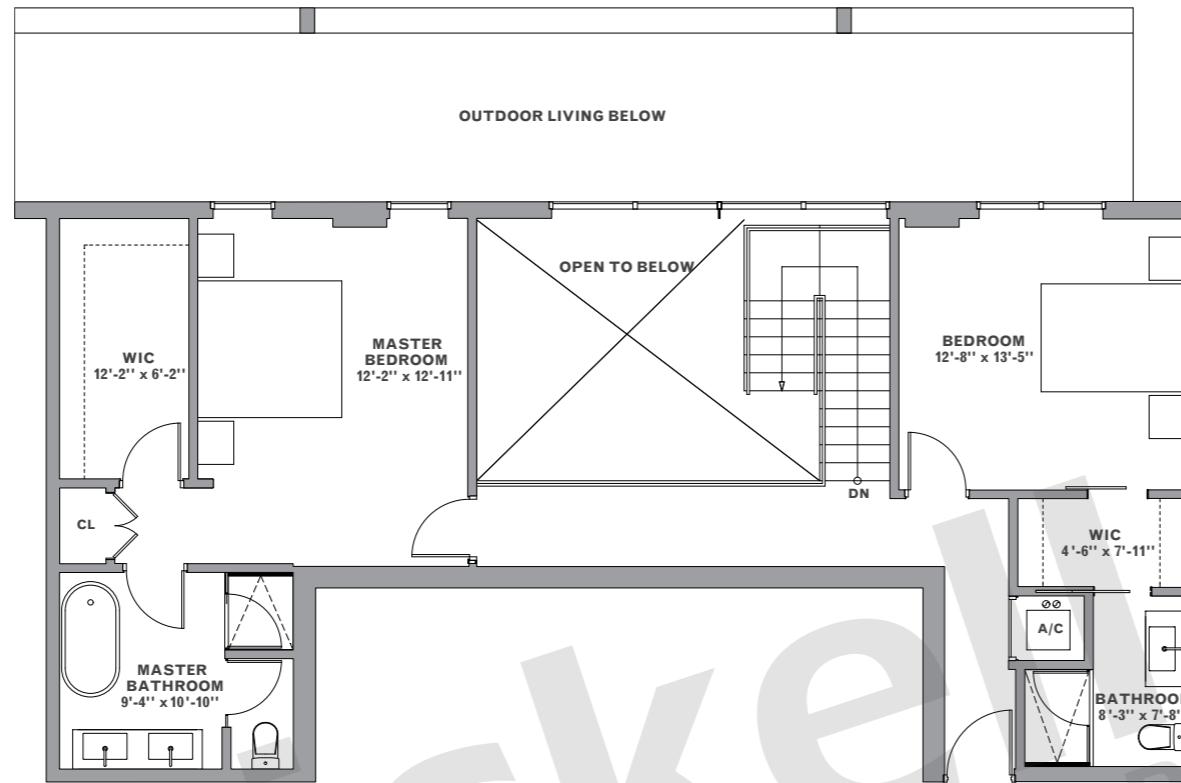
Model P3- Line 01
Floor: 27

Duplex · 3 Bedrooms · 3.5 Baths

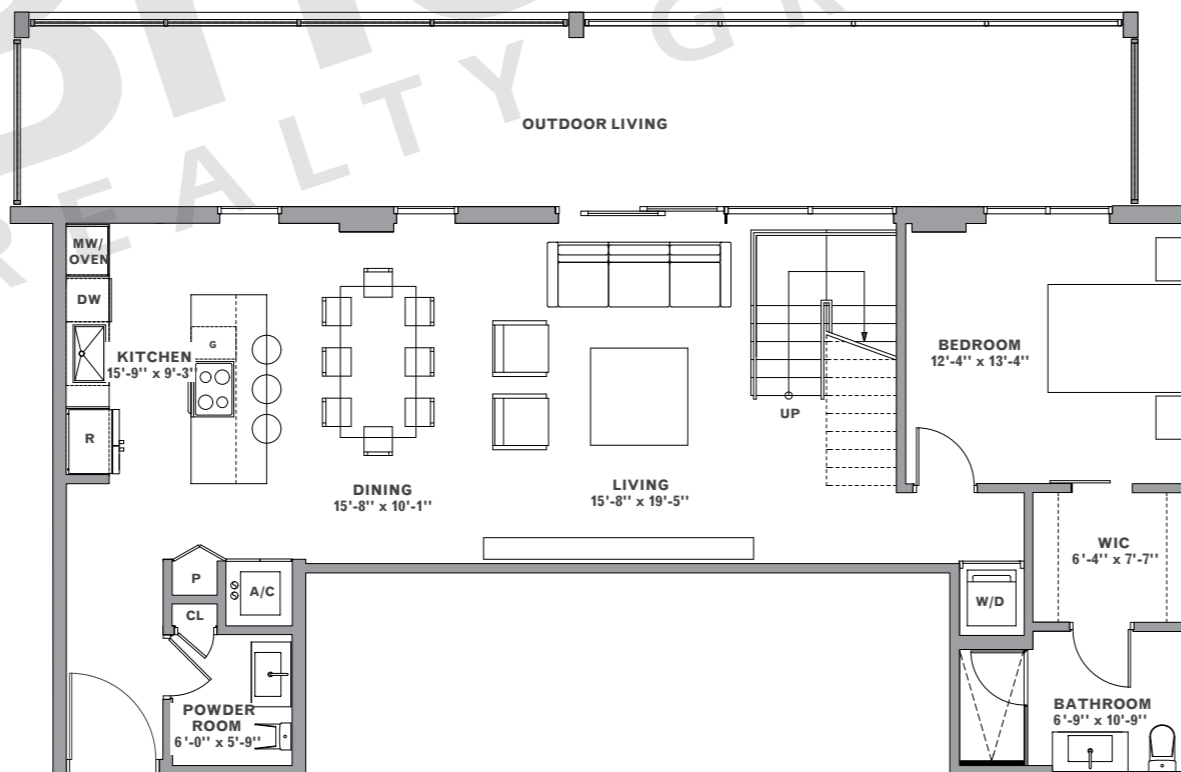
	SQ FT	M ²
Interior	2,015	187.2
Outdoor	462	42.9
Total	2,477	230.1



Upper



Lower



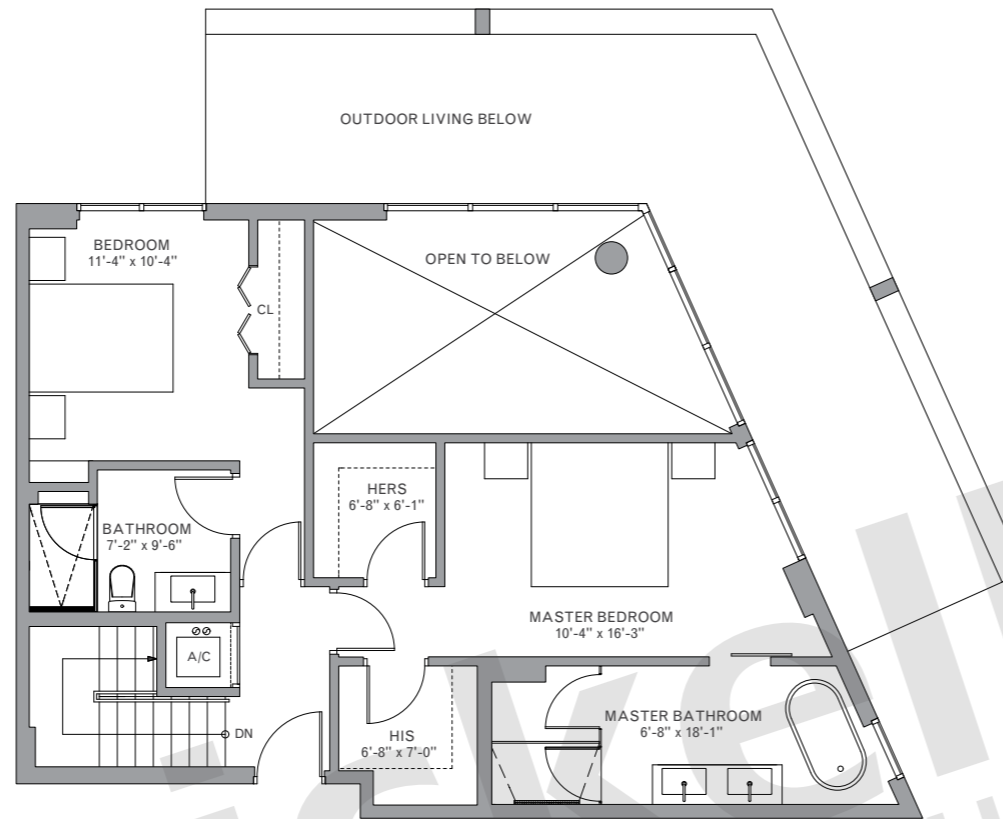
Model P4- Line 10

Floor: 27

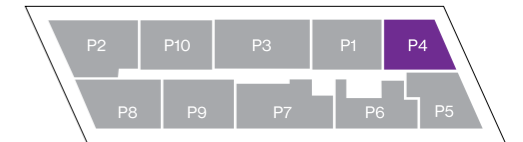
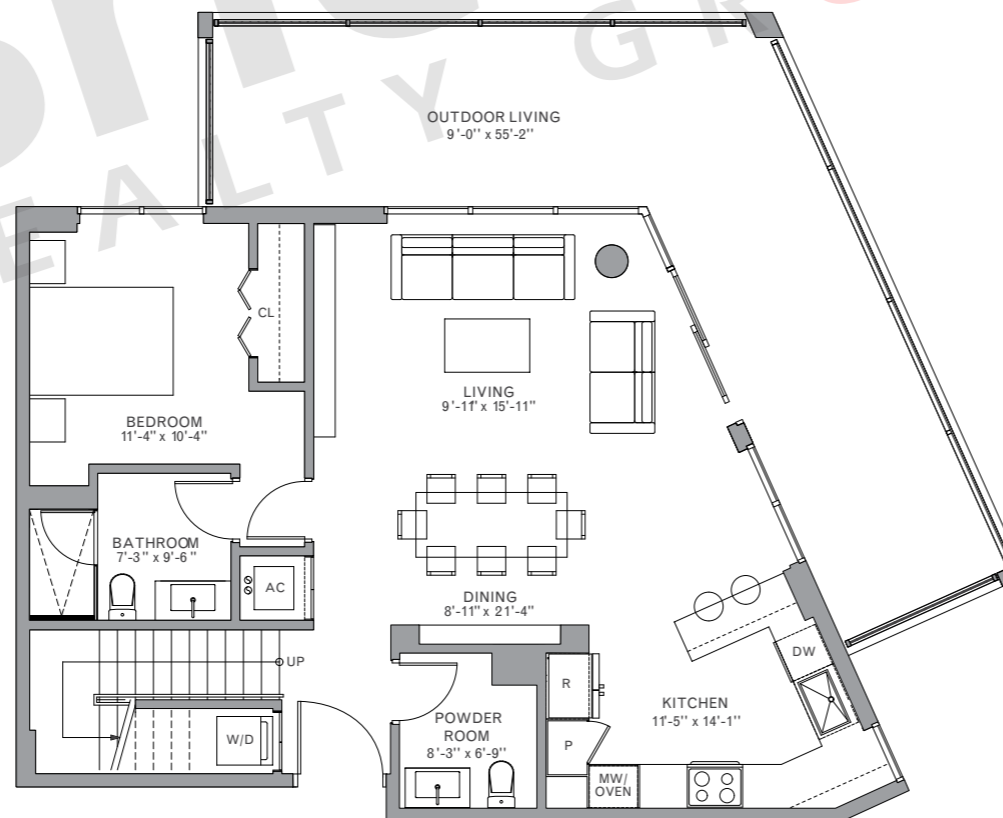
Duplex · 3 Bedrooms · 3.5 Baths

	SQ FT	M ²
Interior	1,758	163.3
Outdoor	444	41.2
Total	2,202	204.5

Upper



Lower



Brickell

REALTY GROUP

2071 NW 112th Avenue, Miami, FL 33172

www.brickell-realty.com/Metropica.html

Oral representation cannot be relied upon as correctly stating representations of the developer. Renderings of residences may not reflect the final products. Dimensions, specifications, improvements, rendering, plans, land uses, materials, amenities, prices, and availability are subject to change at the developer's discretion without notice.

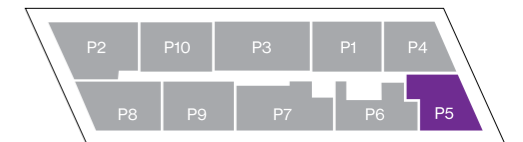
Stated dimensions are approximate and measured to the exterior boundaries of the exterior walls and the centerline of interior demising walls which in fact vary from the dimensions that would be determined by using the description and definition of the "Unit" set forth in the Declaration which generally only includes the interior airspace between the perimeter walls (measuring from interior wall plane to interior wall plane) and excludes interior structural components.

For your reference, the square footage area of the Unit, determined in accordance with those Unit boundaries as defined in the Declaration. Note that measurements of rooms set forth on this floor plan are generally taken at the greatest points of each given room (as if the room were a perfect rectangle), without regard for any cutouts. Accordingly, the area of the actual room will typically be smaller than the product obtained by multiplying the stated length times width.

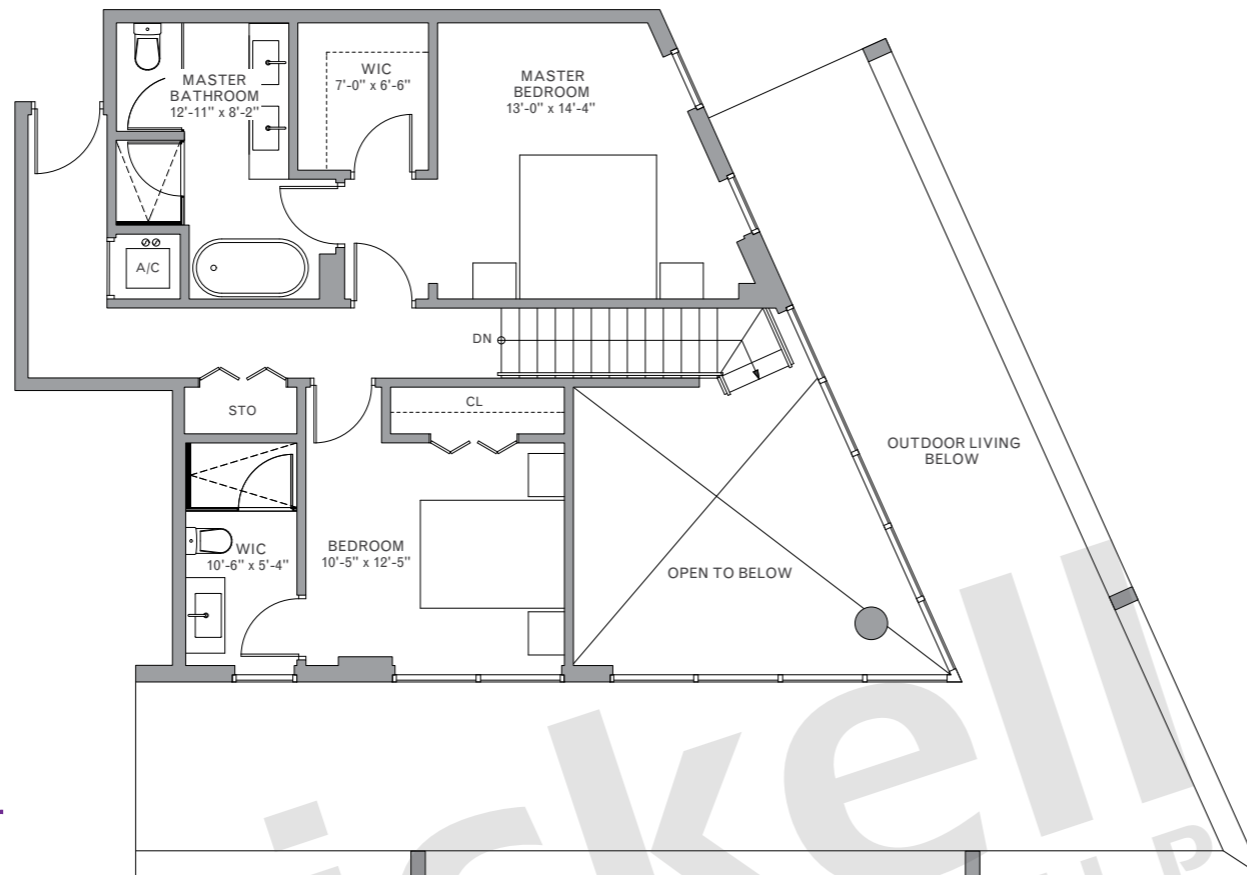
Model P5- Line 09
Floor: 27

Duplex · 3 Bedrooms · 3.5 Baths

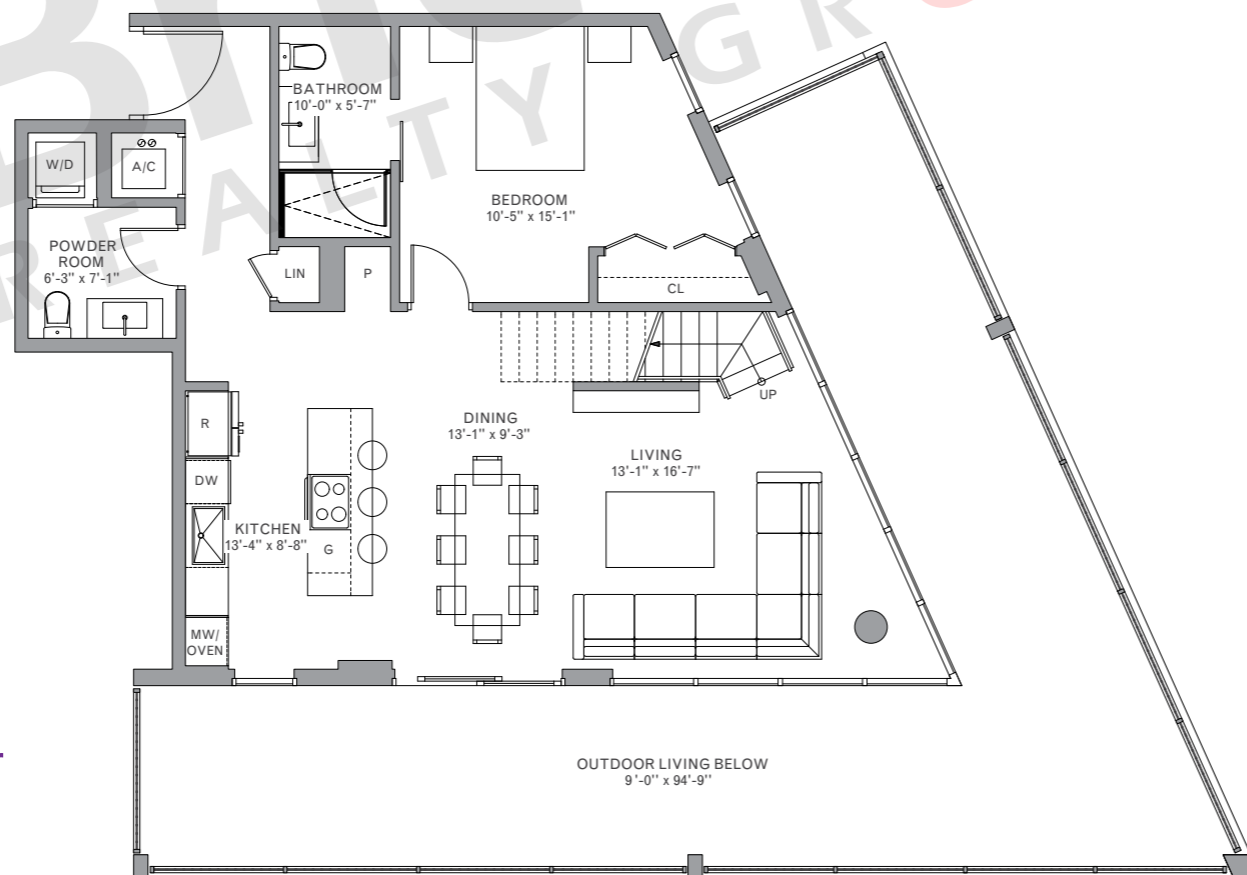
	SQ FT	M ²
Interior	1,772	164.6
Outdoor	350	32.5
Total	2,122	197.1



Upper



Lower

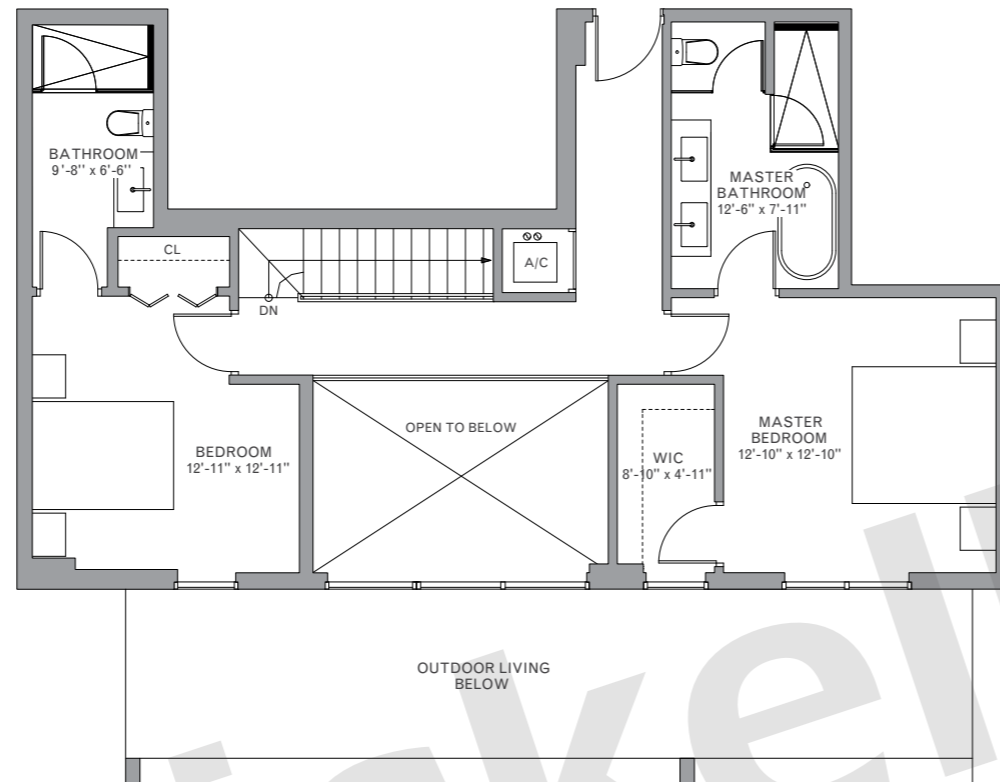


Model P6- Line 08
Floor: 27

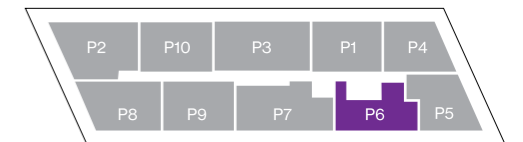
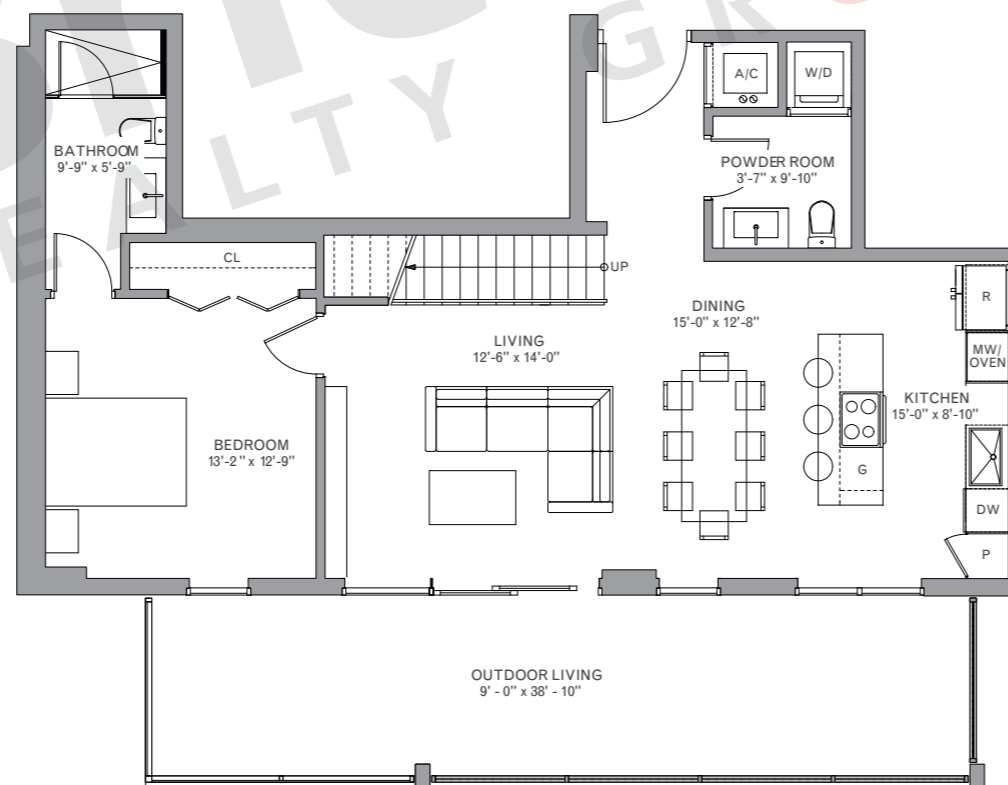
Duplex · 3 Bedrooms · 3.5 Baths

	SQ FT	M ²
Interior	1,738	161.5
Outdoor	350	32.5
Total	2,088	194.0

Upper



Lower

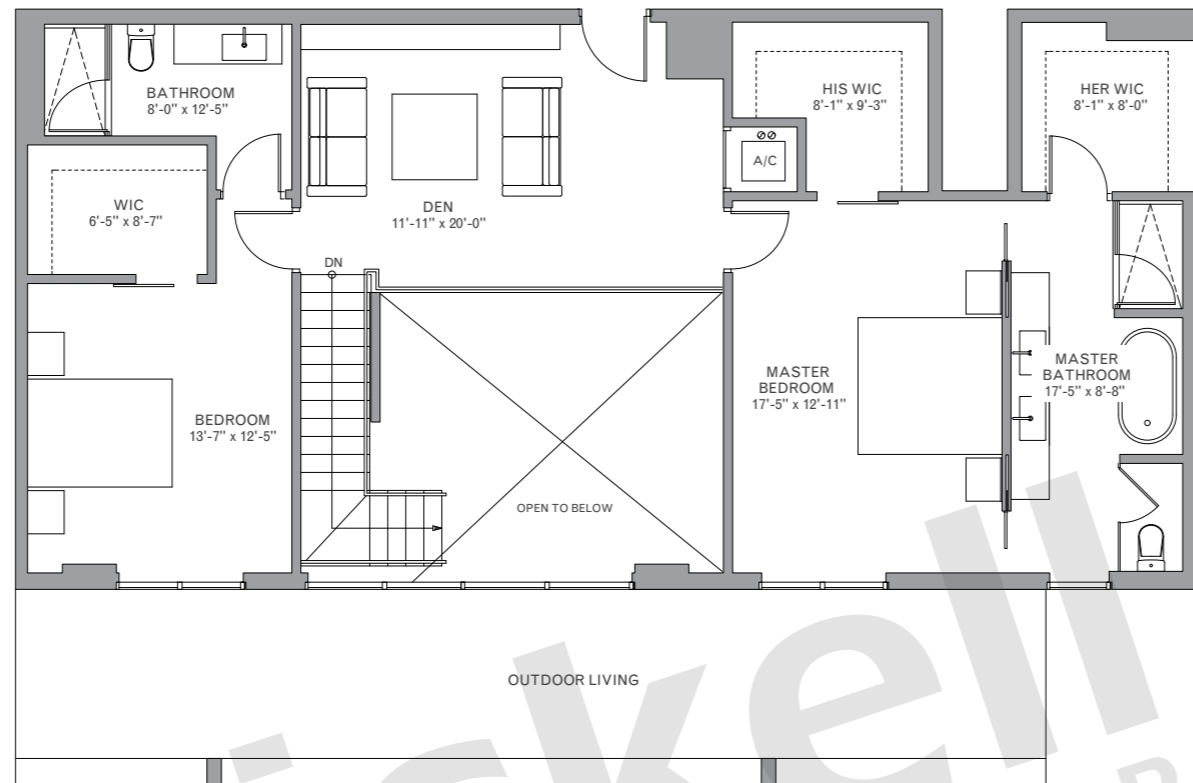


Model P7- Line 07
Floor: 27

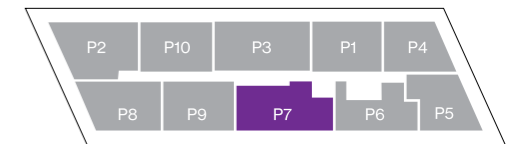
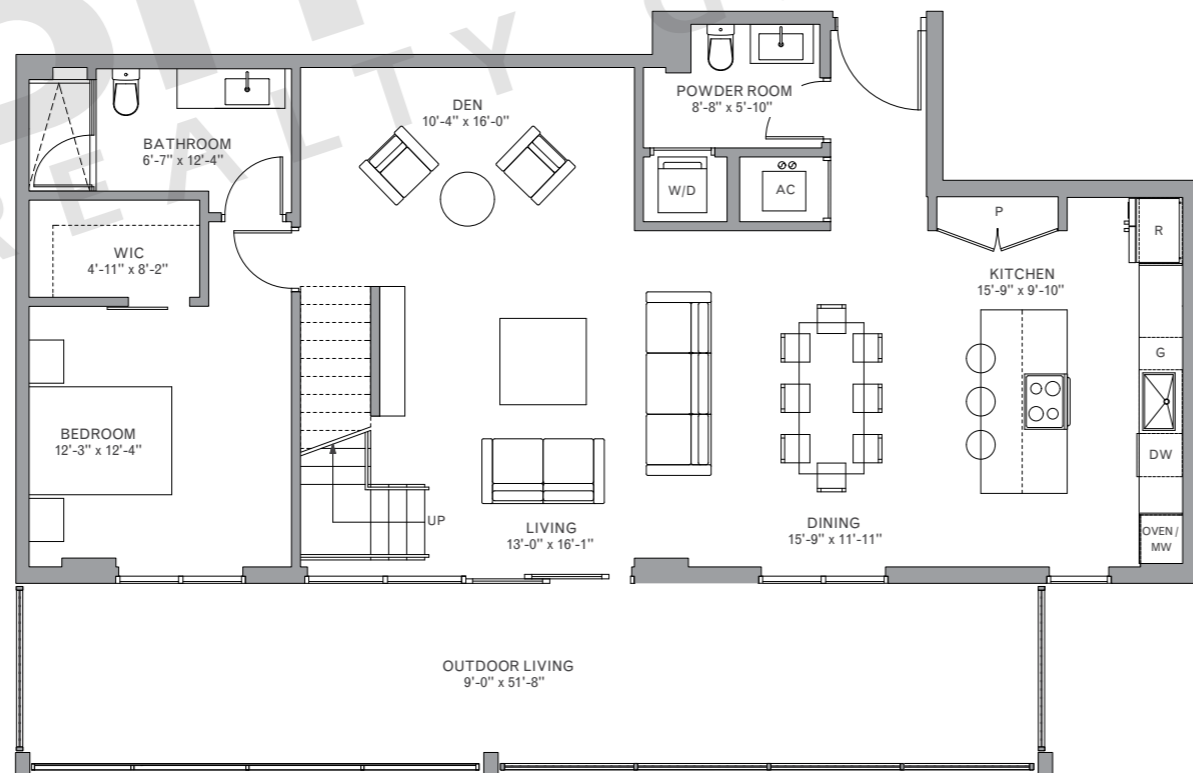
Duplex · 3 Bedrooms · 3.5 Baths

	SQ FT	M ²
Interior	2,448	227.4
Outdoor	462	42.9
Total	2,910	270.3

Upper



Lower

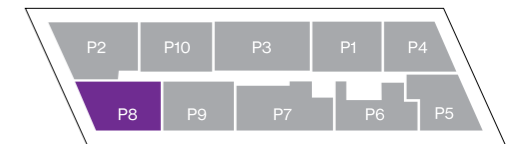


Model P8- Line 04

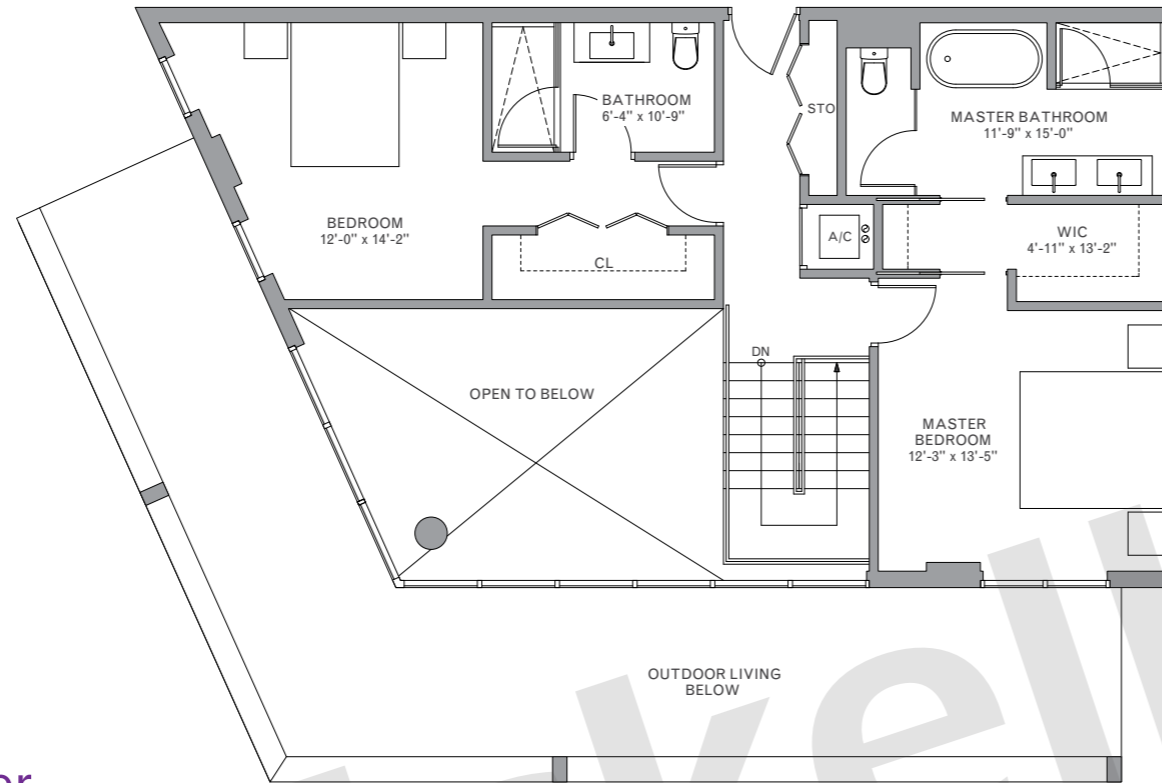
Floor: 27

Duplex · 3 Bedrooms · 3.5 Baths

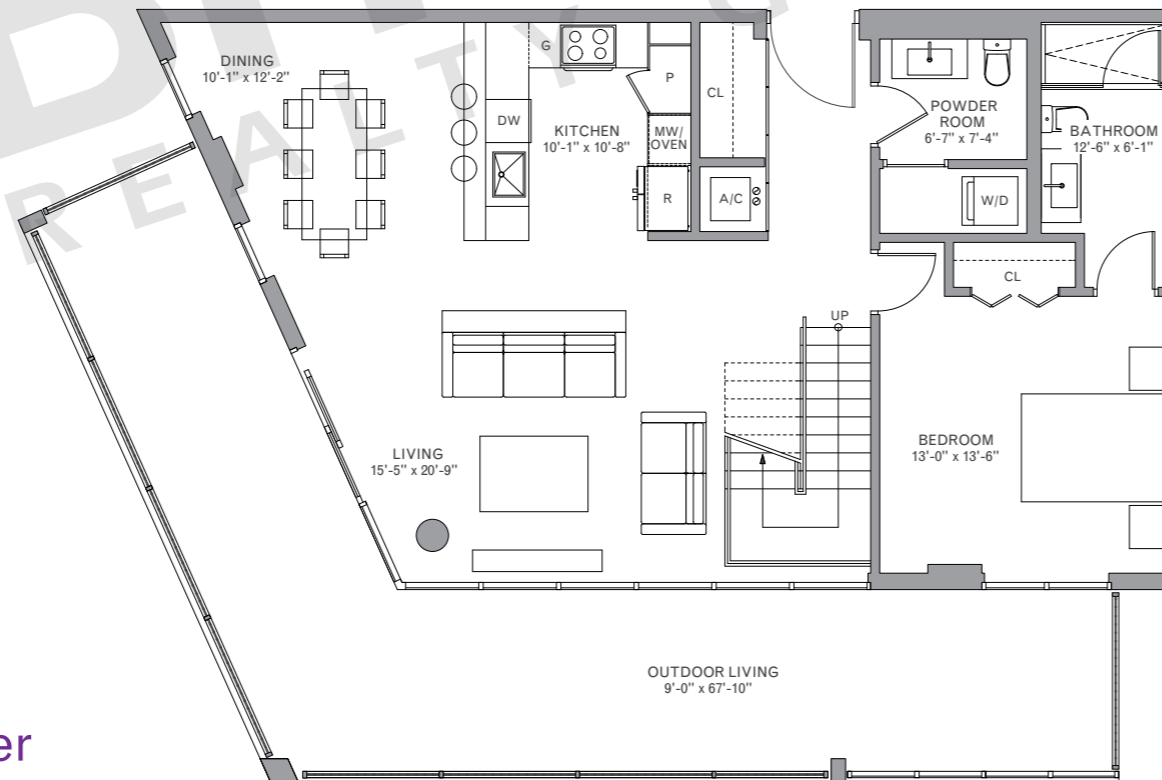
	SQ FT	M ²
Interior	1,945	180.7
Outdoor	554	51.5
Total	2,499	232.2



Upper



Lower



Brickell

REALTY GROUP

2071 NW 112th Avenue, Miami, FL 33172

www.brickell-realty.com/Metropica.html

Oral representation cannot be relied upon as correctly stating representations of the developer. Renderings of residences may not reflect the final products. Dimensions, specifications, improvements, rendering, plans, land uses, materials, amenities, prices, and availability are subject to change at the developer's discretion without notice.

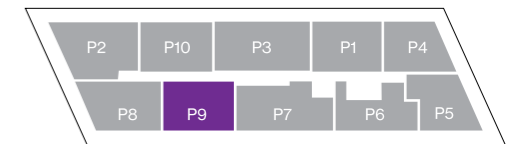
Stated dimensions are approximate and measured to the exterior boundaries of the exterior walls and the centerline of interior demising walls which in fact vary from the dimensions that would be determined by using the description and definition of the "Unit" set forth in the Declaration which generally only includes the interior airspace between the perimeter walls (measuring from interior wall plane to interior wall plane) and excludes interior structural components.

For your reference, the square footage area of the Unit, determined in accordance with those Unit boundaries as defined in the Declaration. Note that measurements of rooms set forth on this floor plan are generally taken at the greatest points of each given room (as if the room were a perfect rectangle), without regard for any cutouts. Accordingly, the area of the actual room will typically be smaller than the product obtained by multiplying the stated length times width.

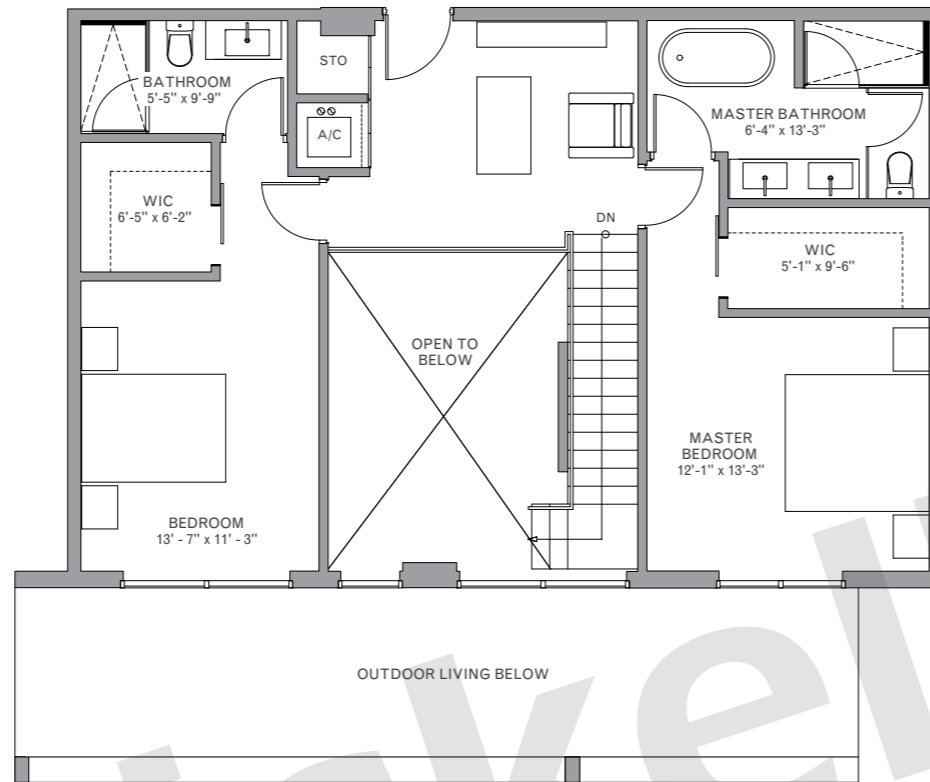
Model P9- Line 05
Floor: 27

Duplex · 3 Bedrooms · 3.5 Baths

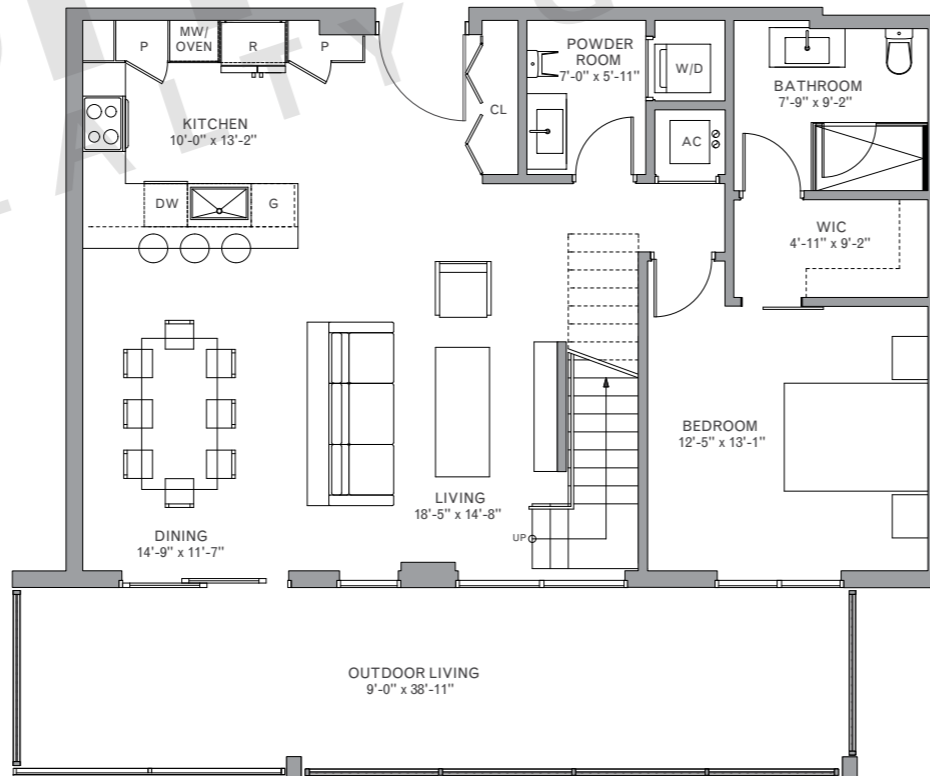
	SQ FT	M ²
Interior	1,901	176.6
Outdoor	350	32.5
Total	2,251	209.1



Upper



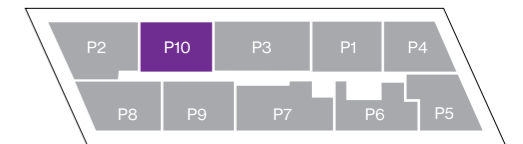
Lower



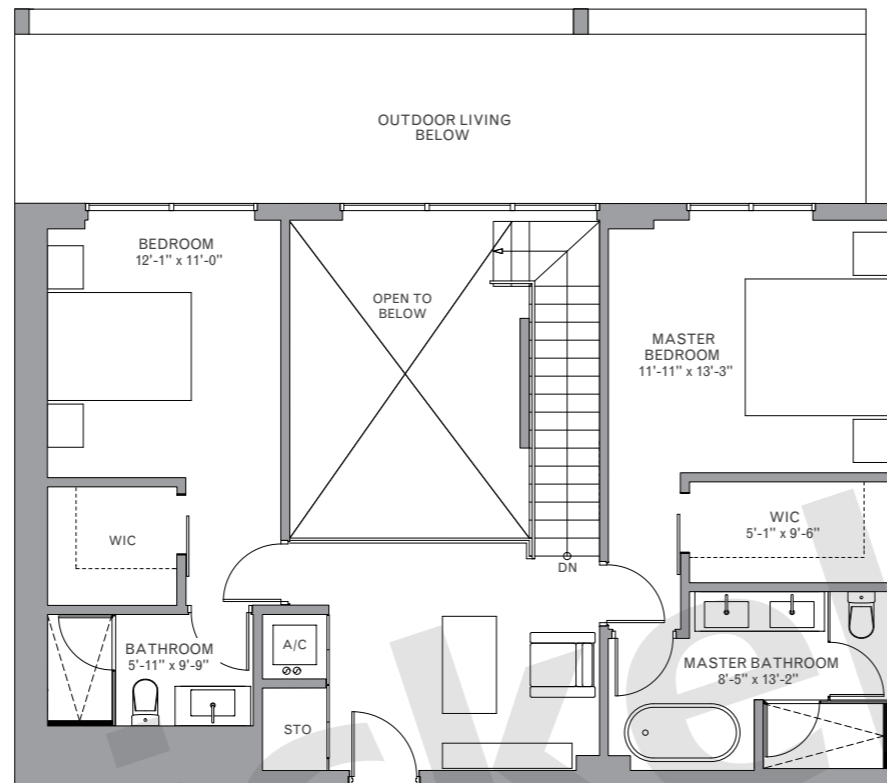
Model P10- Line 02
Floor: 27

Duplex · 3 Bedrooms · 3.5 Baths

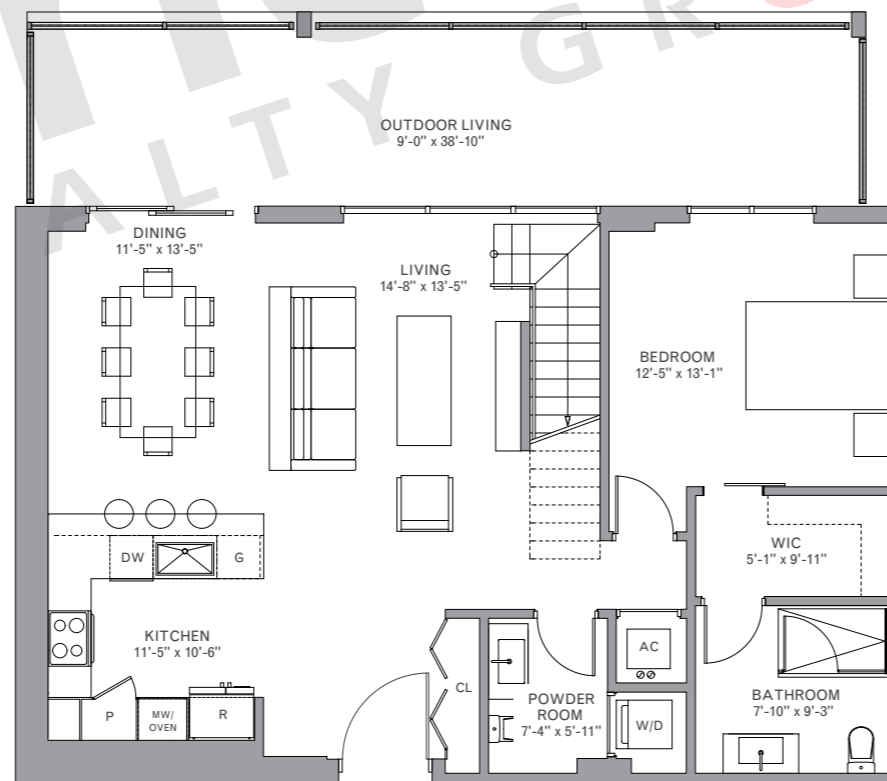
	SQ FT	M ²
Interior	1,901	176.6
Outdoor	350	32.5
Total	2,251	209.1



Upper



Lower



Brickell
REALTY GROUP

2071 NW 112th Avenue, Miami, FL 33172

www.brickell-realty.com/Metropica.html

Oral representation cannot be relied upon as correctly stating representations of the developer. Renderings of residences may not reflect the final products. Dimensions, specifications, improvements, rendering, plans, land uses, materials, amenities, prices, and availability are subject to change at the developer's discretion without notice.

Stated dimensions are approximate and measured to the exterior boundaries of the exterior walls and the centerline of interior demising walls which in fact vary from the dimensions that would be determined by using the description and definition of the "Unit" set forth in the Declaration which generally only includes the interior airspace between the perimeter walls (measuring from interior wall plane to interior wall plane) and excludes interior structural components.

For your reference, the square footage area of the Unit, determined in accordance with those Unit boundaries as defined in the Declaration. Note that measurements of rooms set forth on this floor plan are generally taken at the greatest points of each given room (as if the room were a perfect rectangle), without regard for any cutouts. Accordingly, the area of the actual room will typically be smaller than the product obtained by multiplying the stated length times width.