

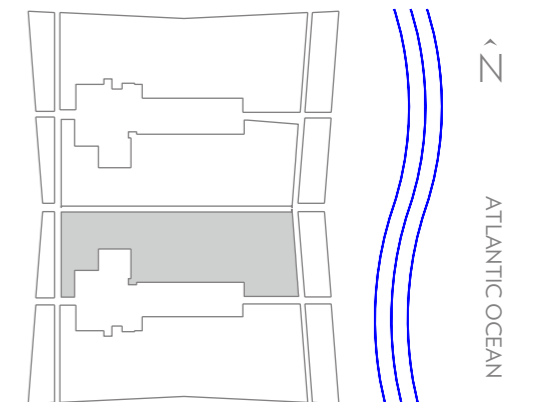
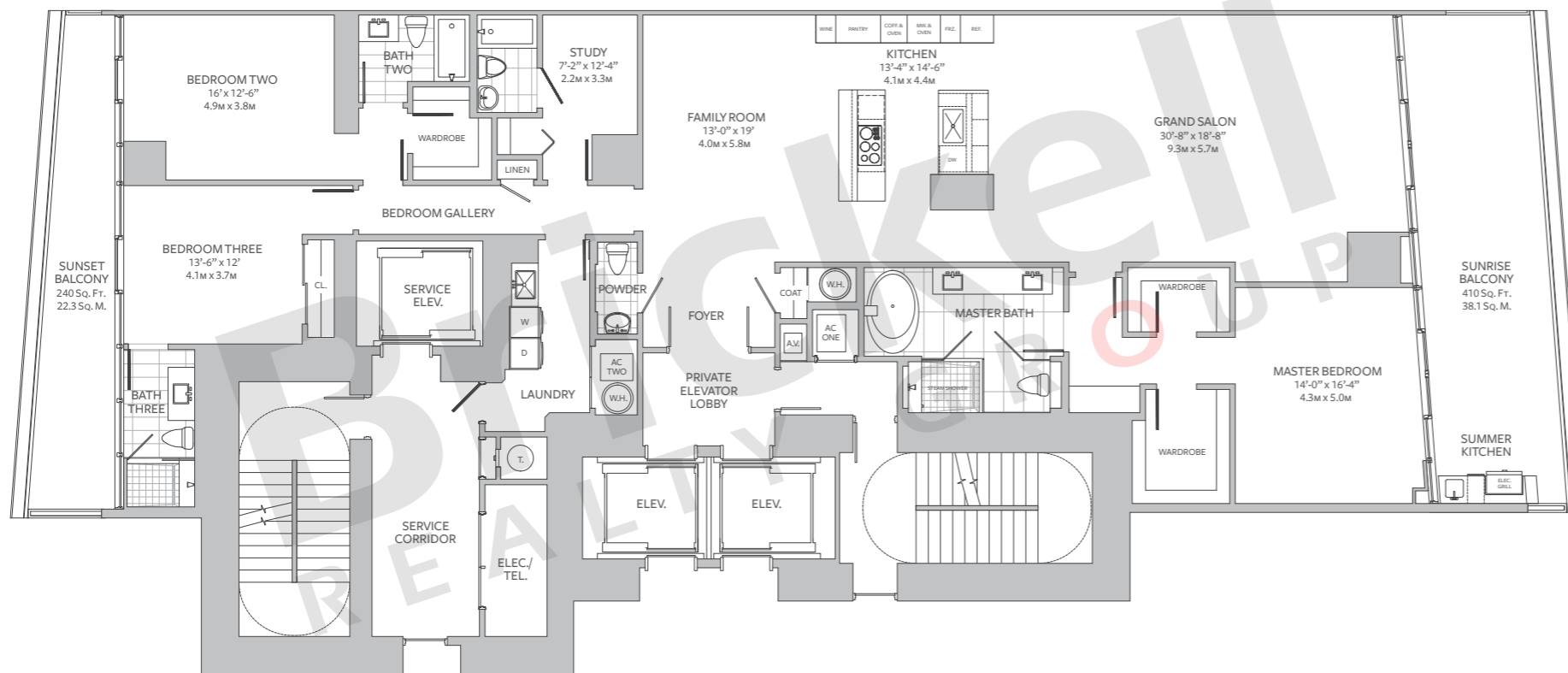
# TURNBERRY

## OCEAN CLUB

### Residence A

3 Bedrooms · 4.5 Baths · Study  
Family Room

	SQ FT	M <sup>2</sup>
Interior	3,110	288.9
Outdoor	650	60.4
<b>Total</b>	<b>3,760</b>	<b>349.3</b>



## Brickell

REALTY GROUP

2071 NW 112th Avenue, Miami, FL 33172

[www.brickell-realty.com/TurnberryOceanClub.html](http://www.brickell-realty.com/TurnberryOceanClub.html)

Oral representation cannot be relied upon as correctly stating representations of the developer. Pictures of homes and condos may not reflect the final products which may vary. Dimensions, specifications, improvements, rendering, plans, land uses, materials, amenities, prices, and availability are subject to change at the developer's discretion without notice.

Stated dimensions are approximate and measured to the exterior boundaries of the exterior walls and the centerline of interior demising walls which in fact vary from the dimensions that would be determined by using the description and definition of the "Unit" set forth in the Declaration (which generally only includes the interior airspace between the perimeter walls and excludes interior structural components).

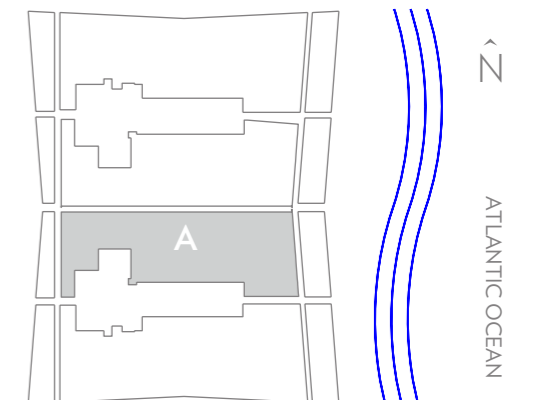
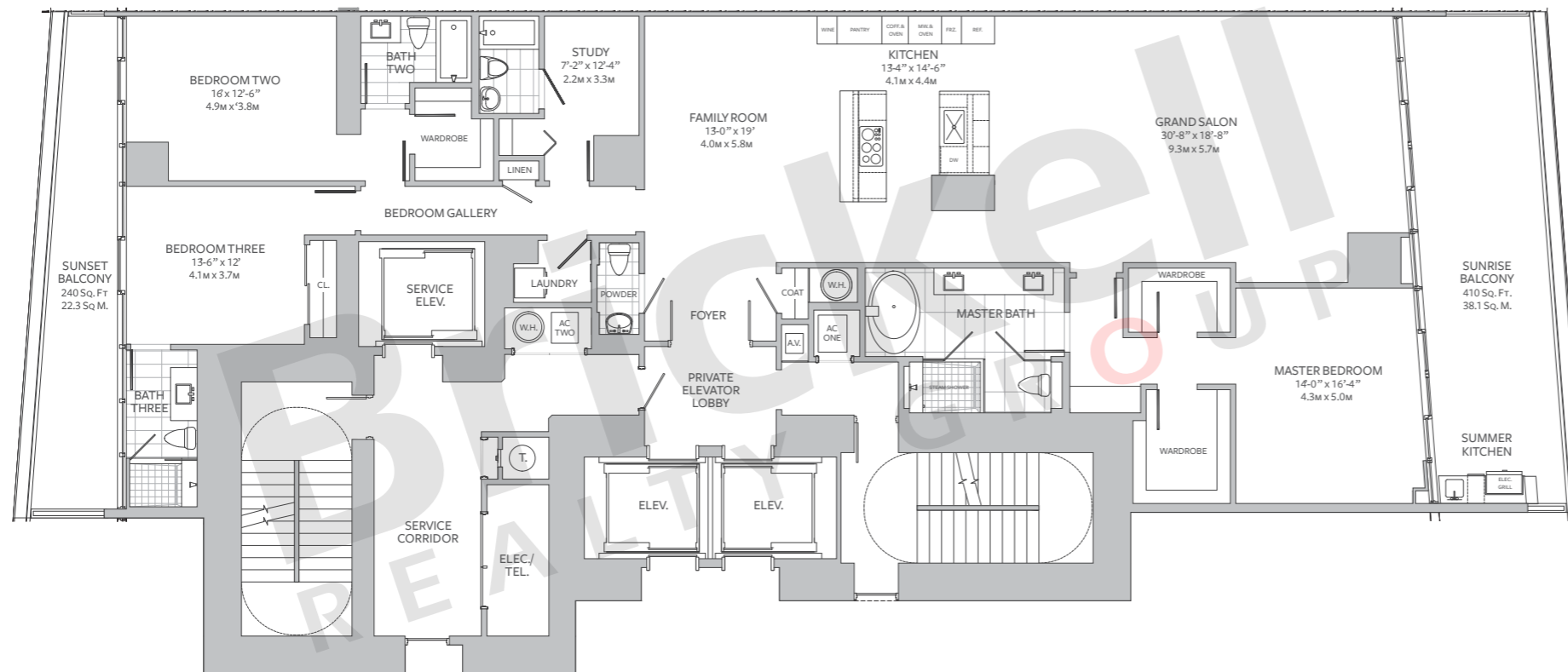
# TURNBERRY

## OCEAN CLUB

### Residence A Modified

3 Bedrooms · 4.5 Baths · Study  
Family Room

	SQ FT	M <sup>2</sup>
Interior	2,900	269.4
Outdoor	650	60.4
<b>Total</b>	<b>3,550</b>	<b>329.8</b>



# Brickell

REALTY GROUP

2071 NW 112th Avenue, Miami, FL 33172

[www.brickell-realty.com/TurnberryOceanClub.html](http://www.brickell-realty.com/TurnberryOceanClub.html)

Oral representation cannot be relied upon as correctly stating representations of the developer. Pictures of homes and condos may not reflect the final products which may vary. Dimensions, specifications, improvements, rendering, plans, land uses, materials, amenities, prices, and availability are subject to change at the developer's discretion without notice.

Stated dimensions are approximate and measured to the exterior boundaries of the exterior walls and the centerline of interior demising walls which in fact vary from the dimensions that would be determined by using the description and definition of the "Unit" set forth in the Declaration (which generally only includes the interior airspace between the perimeter walls and excludes interior structural components).

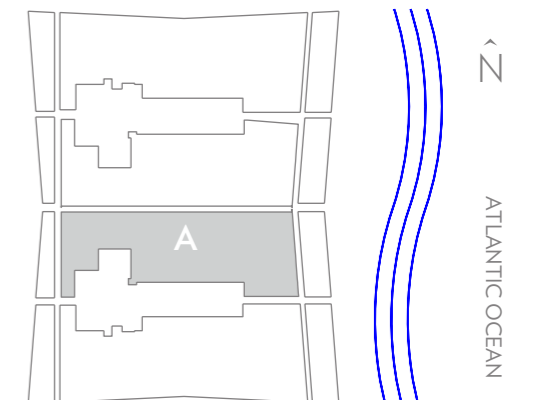
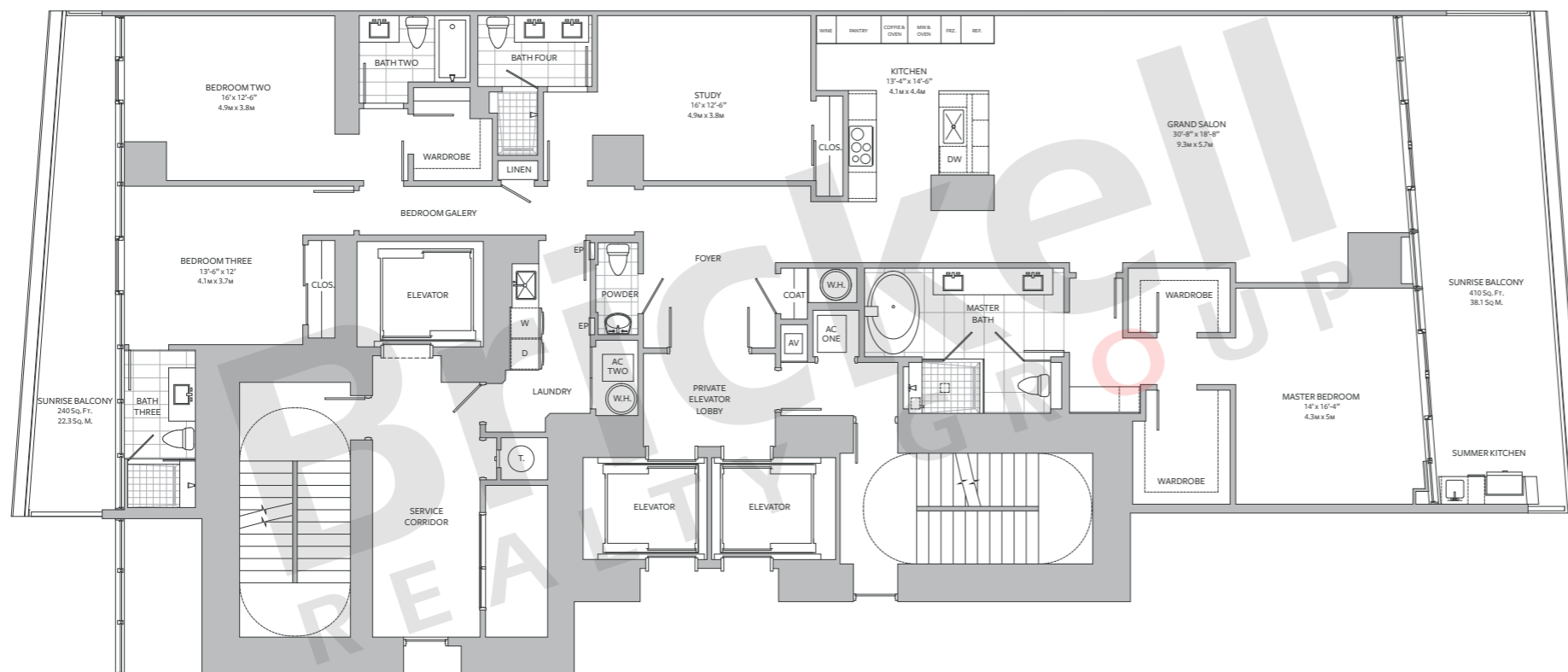
# TURNBERRY

## OCEAN CLUB

### Residence A Option

3 Bedrooms · 4.5 Baths · Study  
Family Room

	SQ FT	M <sup>2</sup>
Interior	3,110	288.9
Outdoor	650	60.4
<b>Total</b>	<b>3,760</b>	<b>349.3</b>



**Brickell**  
REALTY GROUP

2071 NW 112th Avenue, Miami, FL 33172

[www.brickell-realty.com/TurnberryOceanClub.html](http://www.brickell-realty.com/TurnberryOceanClub.html)

Oral representation cannot be relied upon as correctly stating representations of the developer. Pictures of homes and condos may not reflect the final products which may vary. Dimensions, specifications, improvements, rendering, plans, land uses, materials, amenities, prices, and availability are subject to change at the developer's discretion without notice.

Stated dimensions are approximate and measured to the exterior boundaries of the exterior walls and the centerline of interior demising walls which in fact vary from the dimensions that would be determined by using the description and definition of the "Unit" set forth in the Declaration (which generally only includes the interior airspace between the perimeter walls and excludes interior structural components).

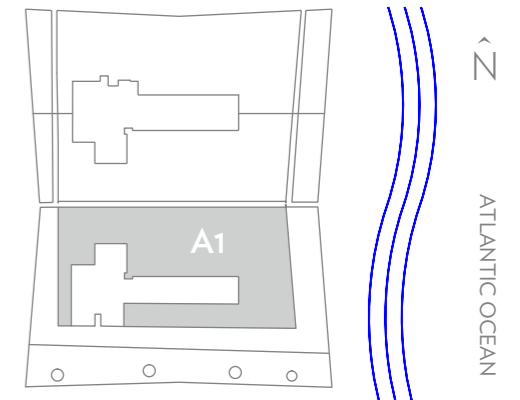
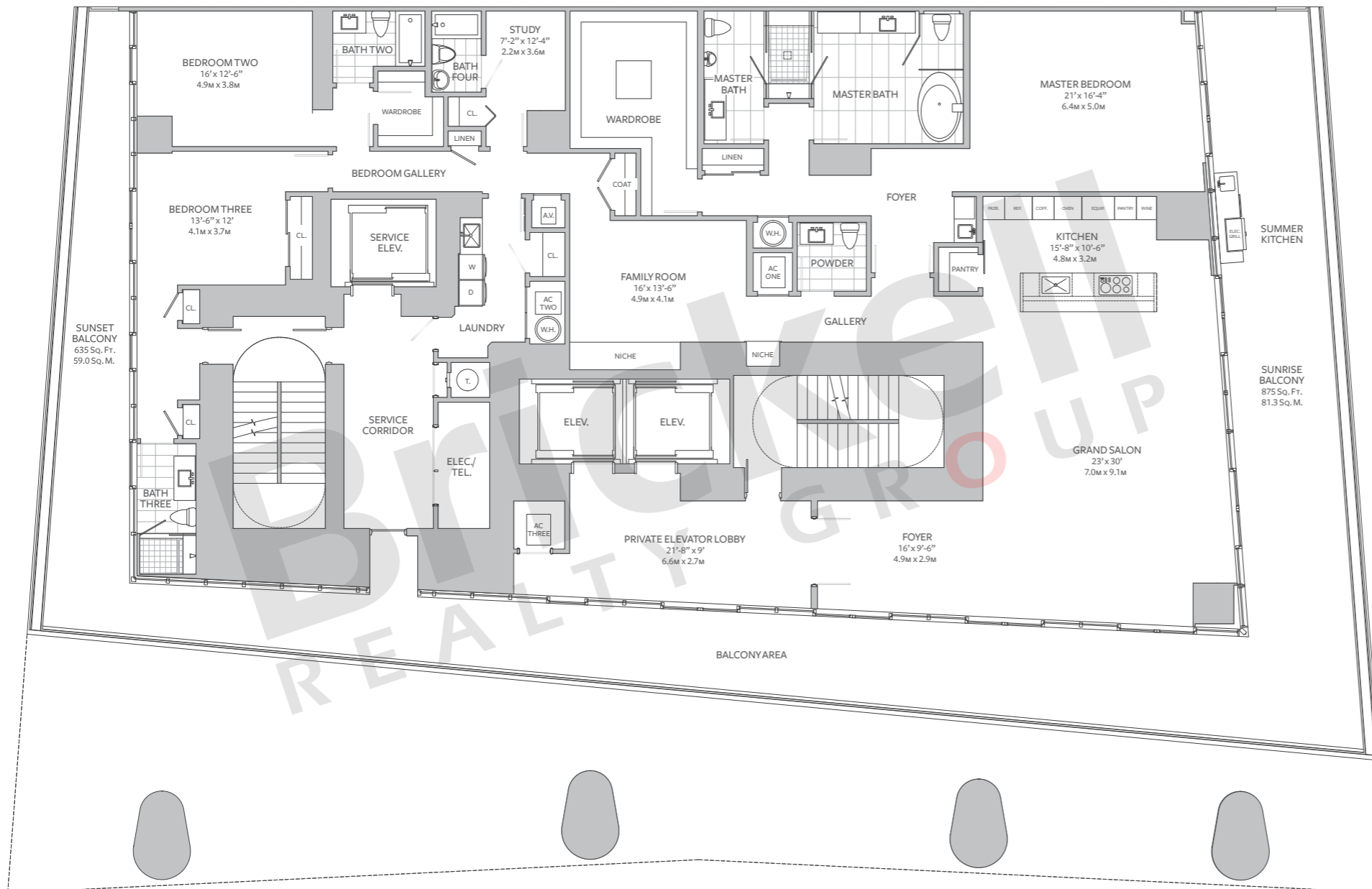
# TURNBERRY

## OCEAN CLUB

### Residence A1

3 Bedrooms · 5.5 Baths · Study  
Family Room

	SQ FT	M <sup>2</sup>
Interior	4,185	388.8
Outdoor	1,960	182.1
<b>Total</b>	<b>6,145</b>	<b>570.9</b>



# Brickell

REALTY GROUP

2071 NW 112th Avenue, Miami, FL 33172

[www.brickell-realty.com/TurnberryOceanClub.html](http://www.brickell-realty.com/TurnberryOceanClub.html)

Oral representation cannot be relied upon as correctly stating representations of the developer. Pictures of homes and condos may not reflect the final products which may vary. Dimensions, specifications, improvements, rendering, plans, land uses, materials, amenities, prices, and availability are subject to change at the developer's discretion without notice.

Stated dimensions are approximate and measured to the exterior boundaries of the exterior walls and the centerline of interior demising walls which in fact vary from the dimensions that would be determined by using the description and definition of the "Unit" set forth in the Declaration (which generally only includes the interior airspace between the perimeter walls and excludes interior structural components).

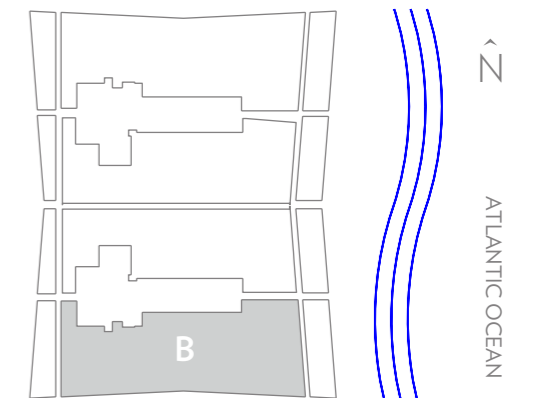
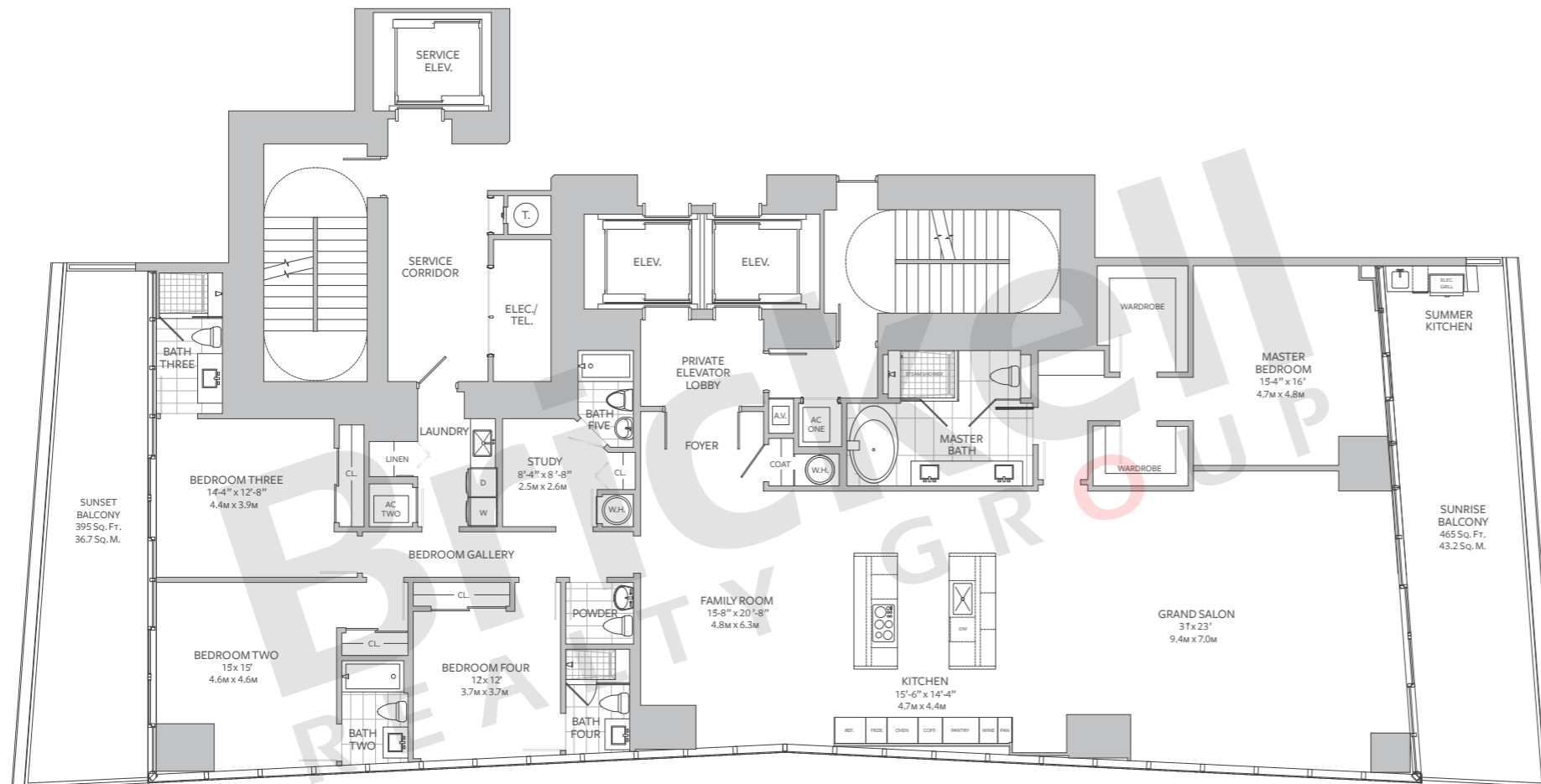
# TURNBERRY

## OCEAN CLUB

### Residence B

4 Bedrooms · 5.5 Baths · Study  
Family Room

	SQ FT	M <sup>2</sup>
Interior	3,625	336.8
Outdoor	860	79.9
<b>Total</b>	<b>4,485</b>	<b>416.7</b>



# Brickell

REALTY GROUP

2071 NW 112th Avenue, Miami, FL 33172

[www.brickell-realty.com/TurnberryOceanClub.html](http://www.brickell-realty.com/TurnberryOceanClub.html)

Oral representation cannot be relied upon as correctly stating representations of the developer. Pictures of homes and condos may not reflect the final products which may vary. Dimensions, specifications, improvements, rendering, plans, land uses, materials, amenities, prices, and availability are subject to change at the developer's discretion without notice.

Stated dimensions are approximate and measured to the exterior boundaries of the exterior walls and the centerline of interior demising walls which in fact vary from the dimensions that would be determined by using the description and definition of the "Unit" set forth in the Declaration (which generally only includes the interior airspace between the perimeter walls and excludes interior structural components).

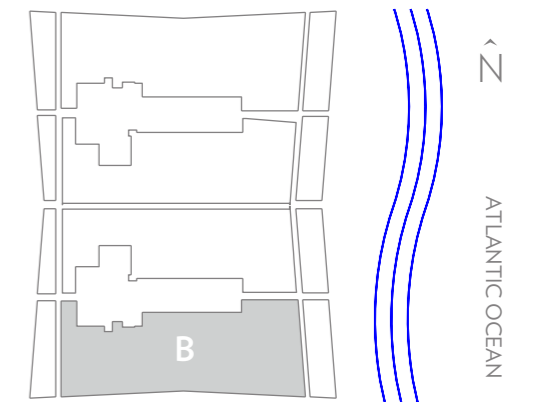
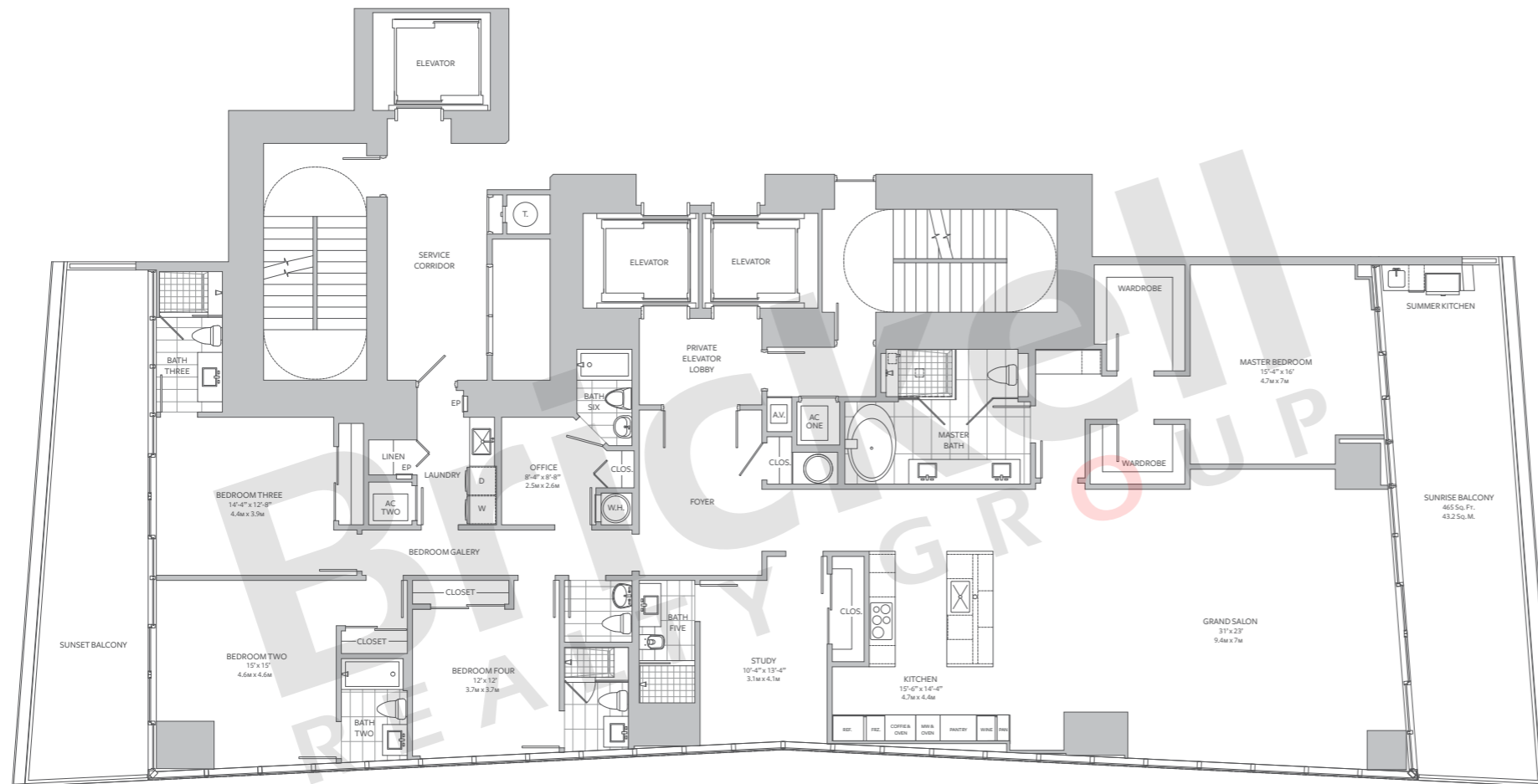
# TURNBERRY

## OCEAN CLUB

### Residence B Option

4 Bedrooms · 6.5 Baths · Study  
Family Room

	SQ FT	M <sup>2</sup>
Interior	3,625	336.8
Outdoor	860	79.9
<b>Total</b>	<b>4,485</b>	<b>416.7</b>



## Brickell

REALTY GROUP

2071 NW 112th Avenue, Miami, FL 33172

[www.brickell-realty.com/TurnberryOceanClub.html](http://www.brickell-realty.com/TurnberryOceanClub.html)

Oral representation cannot be relied upon as correctly stating representations of the developer. Pictures of homes and condos may not reflect the final products which may vary. Dimensions, specifications, improvements, rendering, plans, land uses, materials, amenities, prices, and availability are subject to change at the developer's discretion without notice.

Stated dimensions are approximate and measured to the exterior boundaries of the exterior walls and the centerline of interior demising walls which in fact vary from the dimensions that would be determined by using the description and definition of the "Unit" set forth in the Declaration (which generally only includes the interior airspace between the perimeter walls and excludes interior structural components).



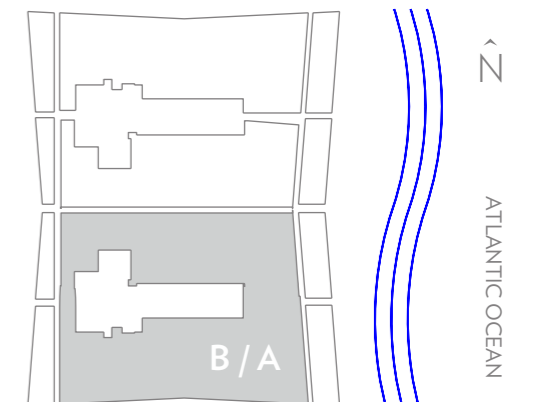
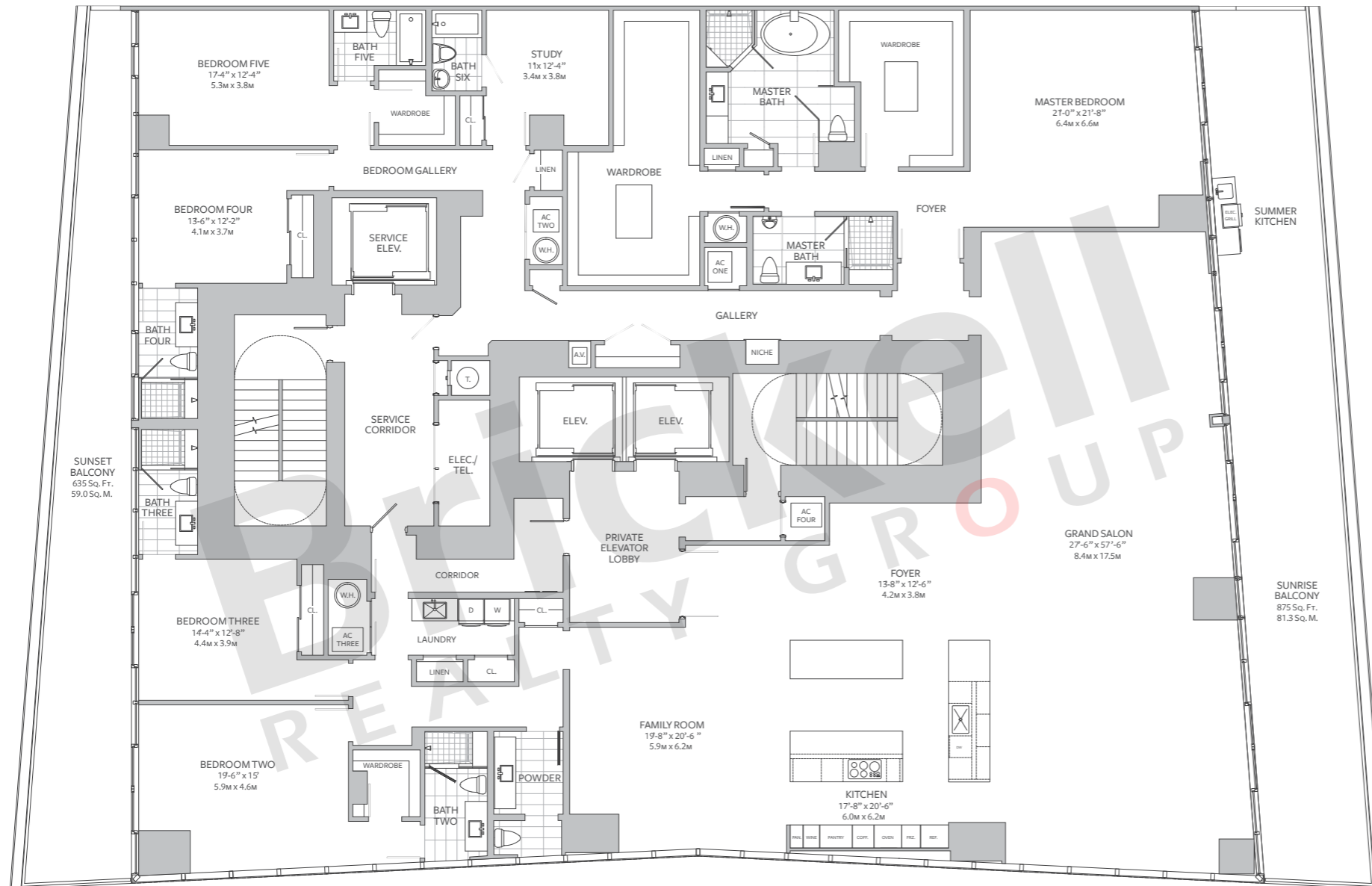
# TURNBERRY

## OCEAN CLUB

### Residence B/A Combination

5 Bedrooms · 7.5 Baths · Study  
Family Room

	SQ FT	M <sup>2</sup>
Interior	6,740	626.1
Outdoor	1,510	140.3
<b>Total</b>	<b>8,250</b>	<b>766.4</b>



**Brickell**  
REALTY GROUP

2071 NW 112th Avenue, Miami, FL 33172

[www.brickell-realty.com/TurnberryOceanClub.html](http://www.brickell-realty.com/TurnberryOceanClub.html)

Oral representation cannot be relied upon as correctly stating representations of the developer. Pictures of homes and condos may not reflect the final products which may vary. Dimensions, specifications, improvements, rendering, plans, land uses, materials, amenities, prices, and availability are subject to change at the developer's discretion without notice.

Stated dimensions are approximate and measured to the exterior boundaries of the exterior walls and the centerline of interior demising walls which in fact vary from the dimensions that would be determined by using the description and definition of the "Unit" set forth in the Declaration (which generally only includes the interior airspace between the perimeter walls and excludes interior structural components).



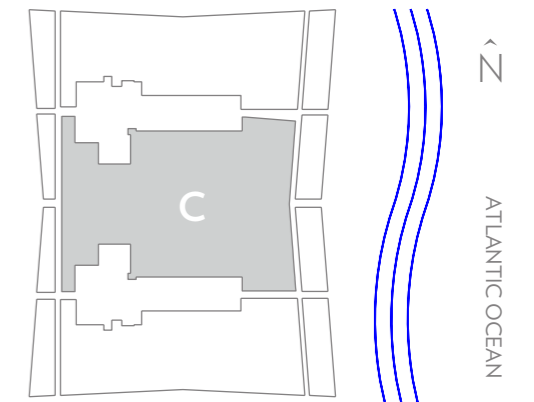
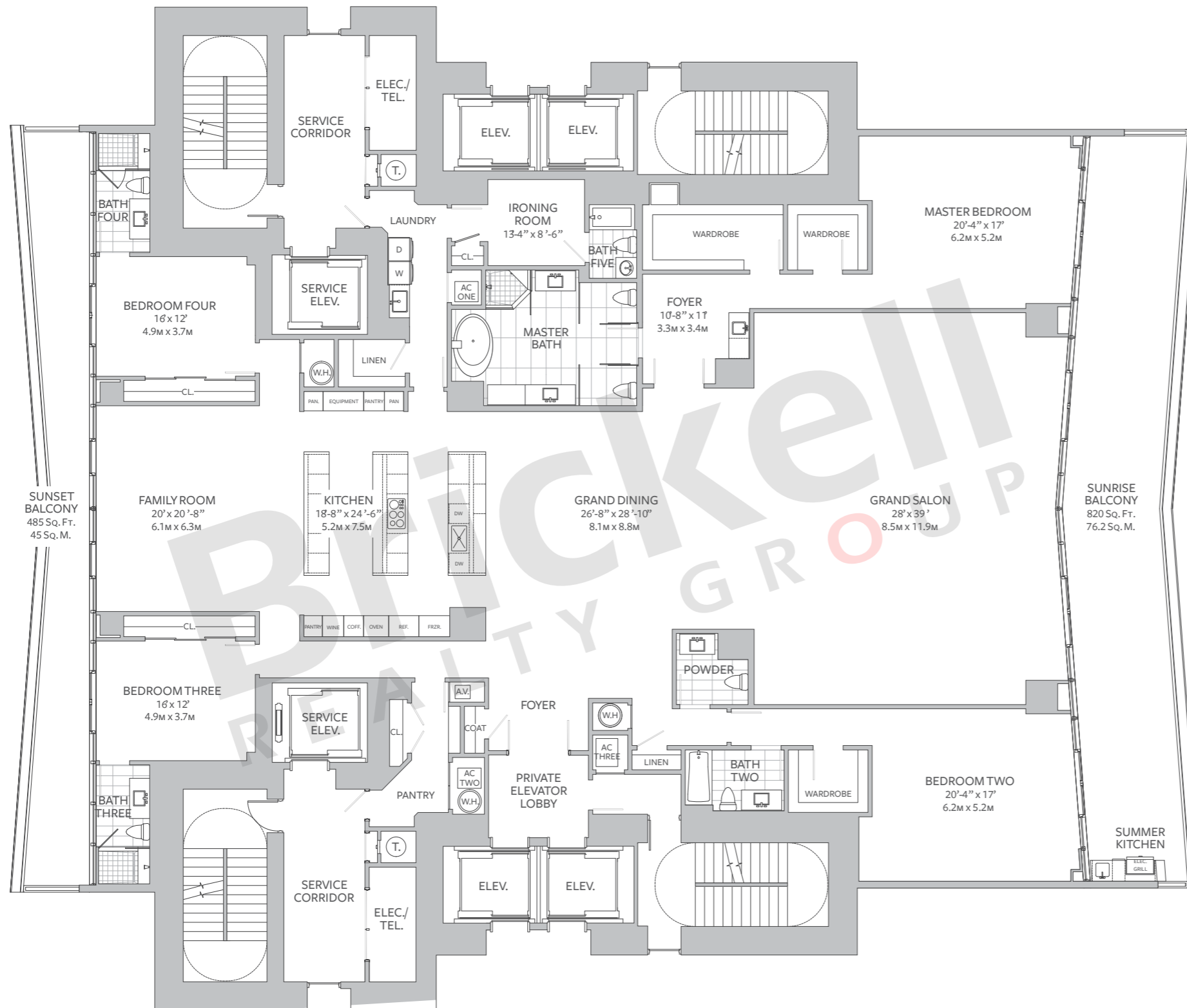
# TURNBERRY

## OCEAN CLUB

### Residence C

4 Bedrooms · 5.5 Baths  
Family Room · Ironing Room

	SQ FT	M <sup>2</sup>
Interior	6,225	578.3
Outdoor	1,305	121.2
<b>Total</b>	<b>7,530</b>	<b>699.5</b>



# Brickell

REALTY GROUP

2071 NW 112th Avenue, Miami, FL 33172

[www.brickell-realty.com/TurnberryOceanClub.html](http://www.brickell-realty.com/TurnberryOceanClub.html)

Oral representation cannot be relied upon as correctly stating representations of the developer. Pictures of homes and condos may not reflect the final products which may vary. Dimensions, specifications, improvements, rendering, plans, land uses, materials, amenities, prices, and availability are subject to change at the developer's discretion without notice.

Stated dimensions are approximate and measured to the exterior boundaries of the exterior walls and the centerline of interior demising walls which in fact vary from the dimensions that would be determined by using the description and definition of the "Unit" set forth in the Declaration (which generally only includes the interior airspace between the perimeter walls and excludes interior structural components).

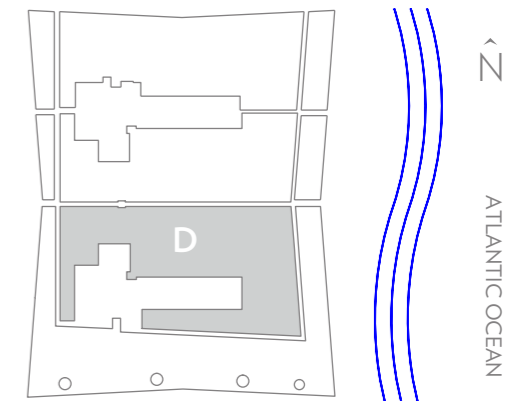
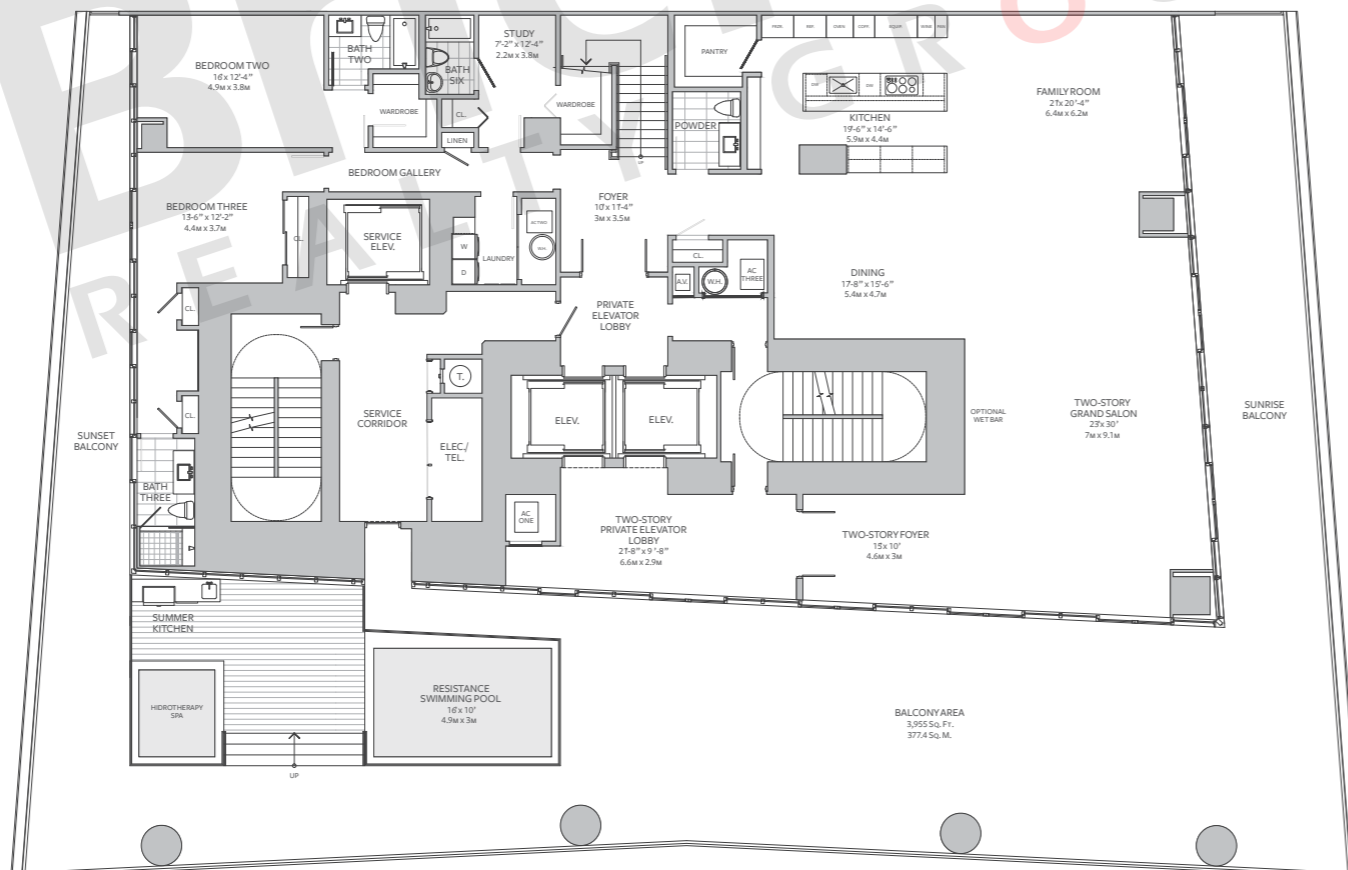
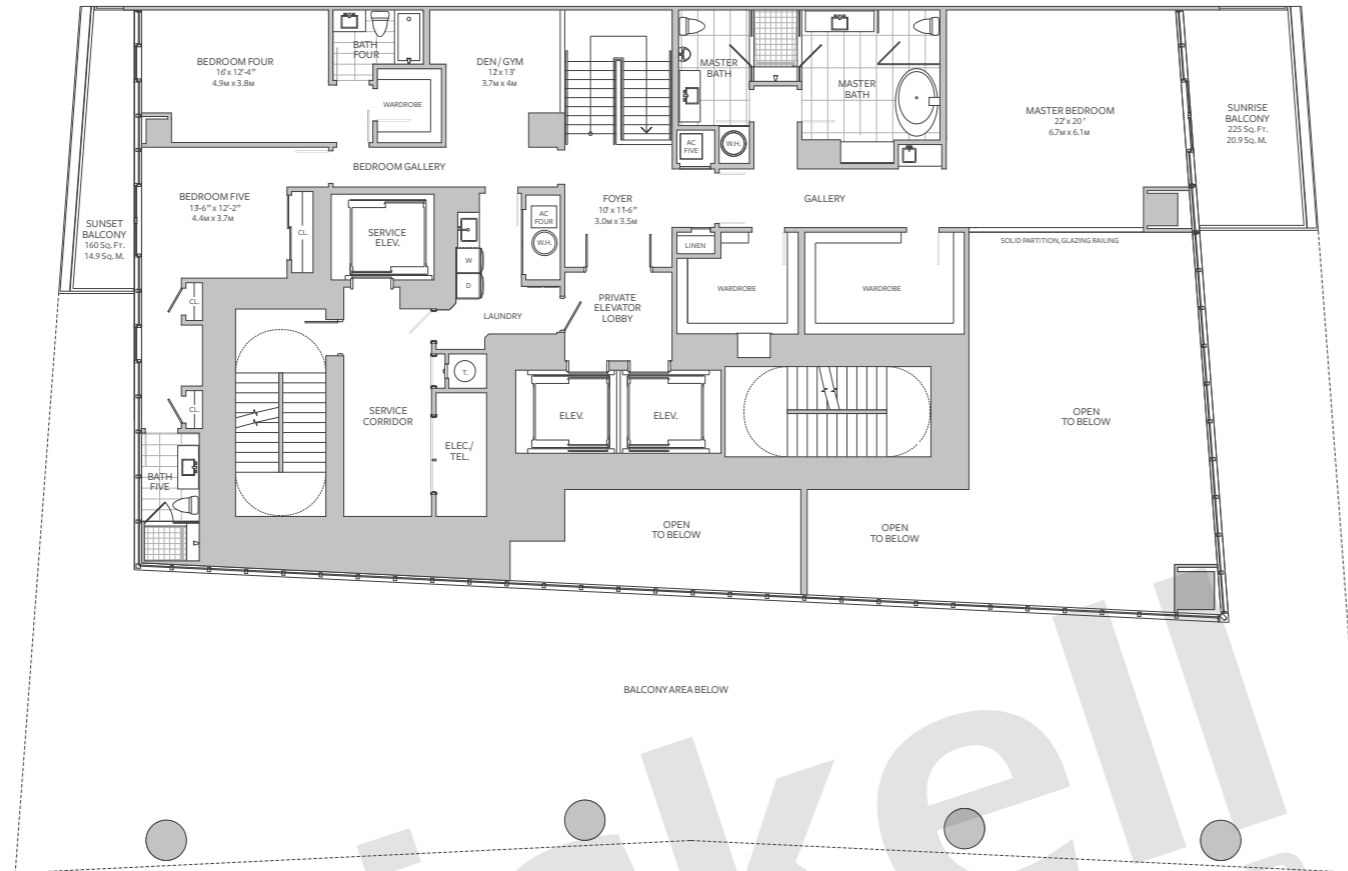
# TURNBERRY

## OCEAN CLUB

### Residence D - Duplex

5 Bedrooms · 7.5 Baths  
Family Room · Den · Study

	SQ FT	M <sup>2</sup>
Interior 1st Level	3,970	368.8
Interior 2nd Level	2,725	253.1
<b>Total Interior</b>	<b>6,695</b>	<b>621.9</b>
Exterior 1st Level	3,955	367.4
Exterior 2nd Level	385	35.8
<b>Total Exterior</b>	<b>4,340</b>	<b>403.2</b>
<b>Total</b>	<b>11,035</b>	<b>1,025.1</b>



**Brickell**  
REALTY GROUP

2071 NW 112th Avenue, Miami, FL 33172

[www.brickell-realty.com/TurnberryOceanClub.html](http://www.brickell-realty.com/TurnberryOceanClub.html)

Oral representation cannot be relied upon as correctly stating representations of the developer. Pictures of homes and condos may not reflect the final products which may vary. Dimensions, specifications, improvements, rendering, plans, land uses, materials, amenities, prices, and availability are subject to change at the developer's discretion without notice.

Stated dimensions are approximate and measured to the exterior boundaries of the exterior walls and the centerline of interior demising walls which in fact vary from the dimensions that would be determined by using the description and definition of the "Unit" set forth in the Declaration (which generally only includes the interior airspace between the perimeter walls and excludes interior structural components).

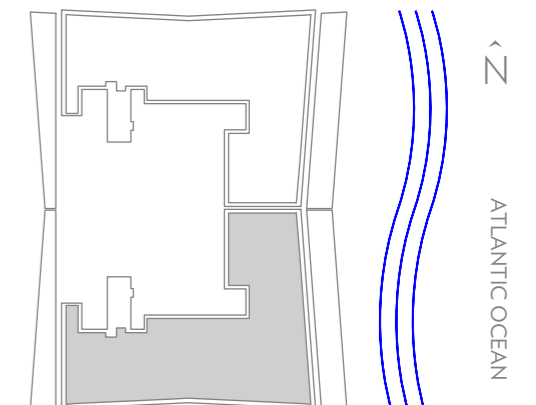
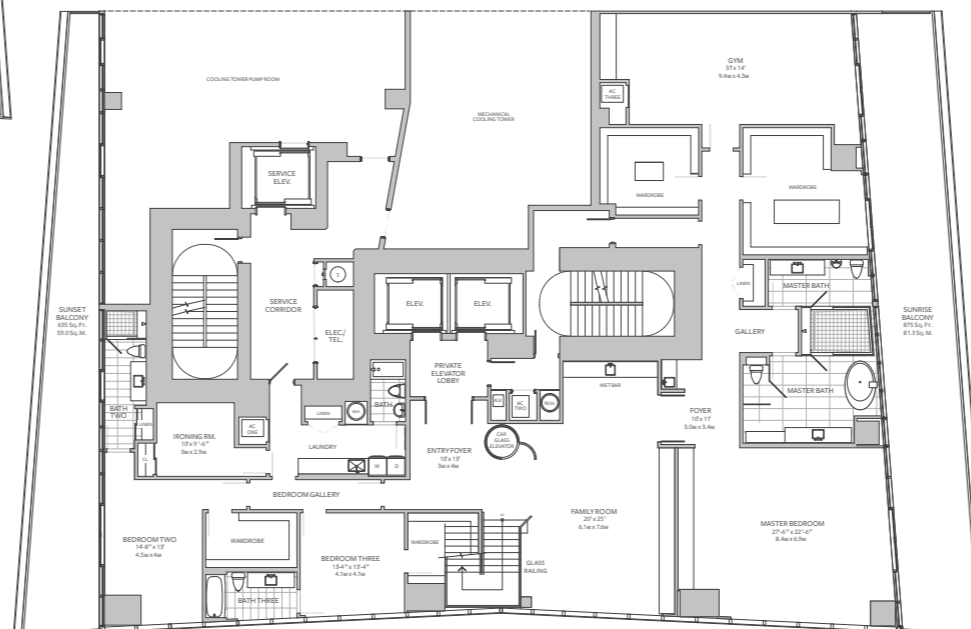
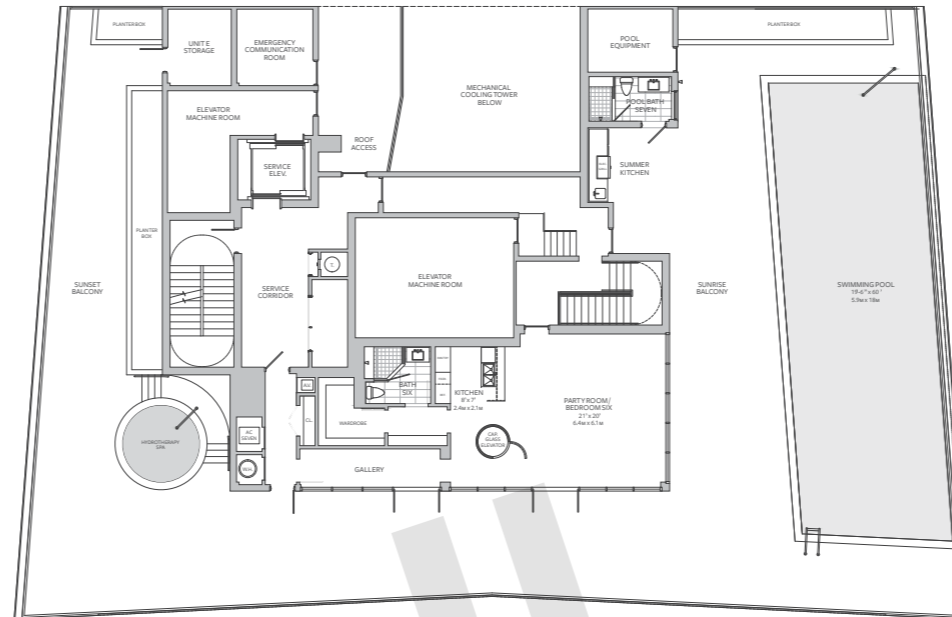
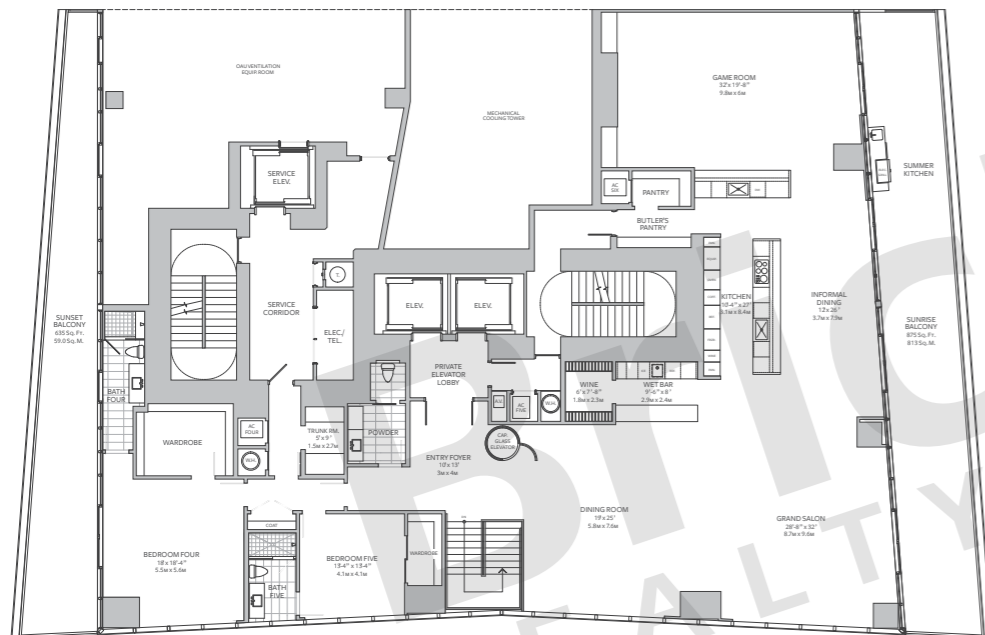
# TURNBERRY

## OCEAN CLUB

### Residence E - Triplex

6 Bedrooms · 9.5 Baths  
 Family Room · Game Room · Gym  
 Ironing Room · Roof Kitchen  
 Swimming Pool

	SQ FT	M <sup>2</sup>
Interior 1st Level	4,850	450.6
Interior 2nd Level	4,730	439.4
Interior Roof Level	1,170	108.7
<b>Total Interior</b>	<b>10,750</b>	<b>998.7</b>
Exterior 1st Level	1,510	140.3
Exterior 2nd Level	1,510	140.3
Exterior Roof Level	5,390	500.8
<b>Total Exterior</b>	<b>8,410</b>	<b>781.4</b>
<b>Total</b>	<b>19,160</b>	<b>1,780.1</b>



**Brickell**  
 REALTY GROUP

2071 NW 112th Avenue, Miami, FL 33172

[www.brickell-realty.com/TurnberryOceanClub.html](http://www.brickell-realty.com/TurnberryOceanClub.html)

Oral representation cannot be relied upon as correctly stating representations of the developer. Pictures of homes and condos may not reflect the final products which may vary. Dimensions, specifications, improvements, rendering, plans, land uses, materials, amenities, prices, and availability are subject to change at the developer's discretion without notice.

Stated dimensions are approximate and measured to the exterior boundaries of the exterior walls and the centerline of interior demising walls which in fact vary from the dimensions that would be determined by using the description and definition of the "Unit" set forth in the Declaration (which generally only includes the interior airspace between the perimeter walls and excludes interior structural components).