



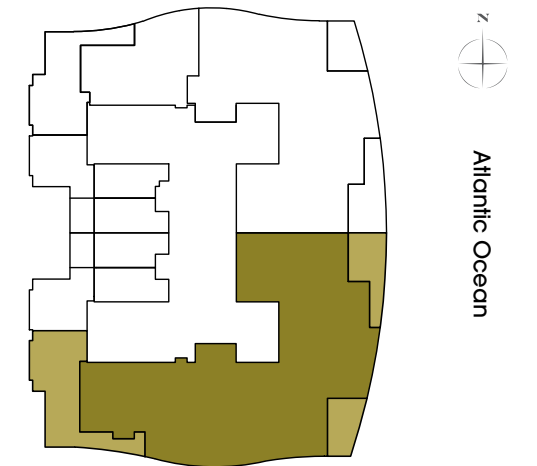
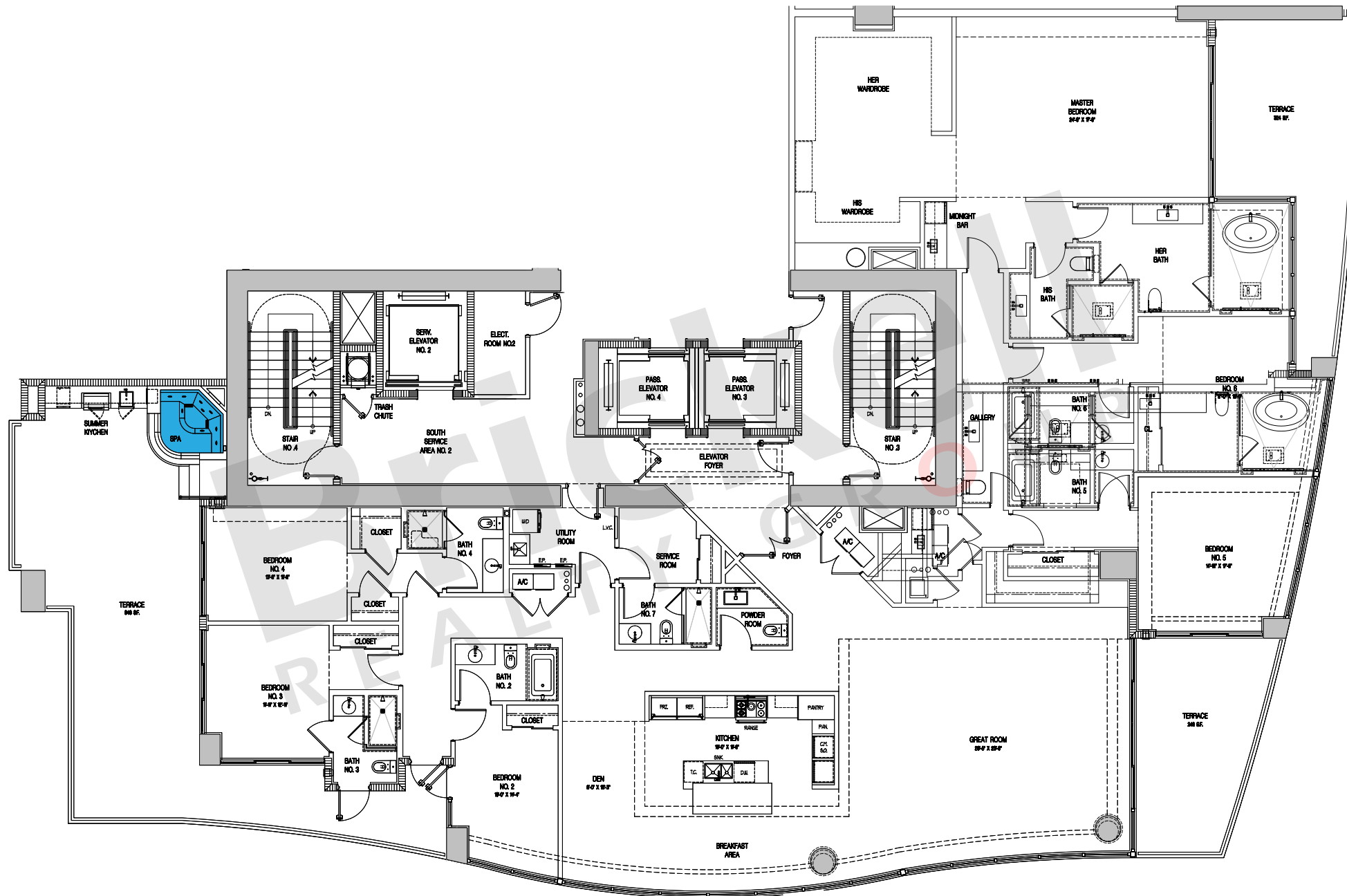
THE ESTATES AT ACQUALINA
The World's Finest Residences

Boticelli

6 Bedrooms · 7.5 Baths · Den
Great Room · Service Room
Terrace w/SPA & Summer Kitchen

| | SQ FT | M ² |
|--------------|--------------|----------------|
| Interior | 5,283 | 490.8 |
| Terrace | 1,420 | 131.9 |
| Total | 6,703 | 622.7 |

Floor: 3



Brickell
REALTY GROUP

2071 NW 112th Avenue, Miami, FL 33172

www.brickell-realty.com/EstatesatAcqualina.html

Oral representation cannot be relied upon as correctly stating representations of the developer. Pictures of homes and condos may not reflect the final products which may vary. Dimensions, specifications, improvements, rendering, plans, land uses, materials, amenities, prices, and availability are subject to change at the developer's discretion without notice.

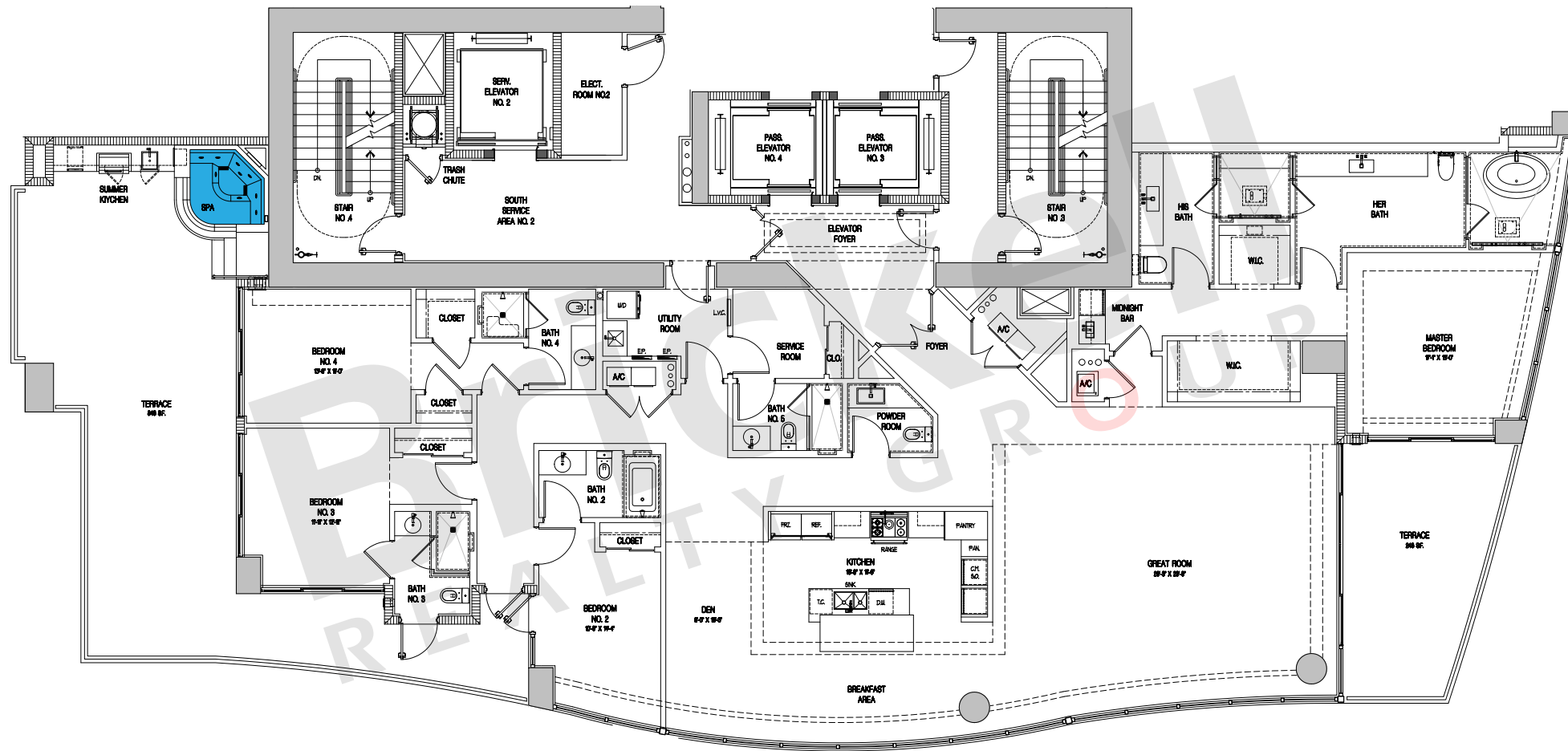
Stated dimensions are approximate and measured to the exterior boundaries of the exterior walls and the centerline of interior demising walls which in fact vary from the dimensions that would be determined by using the description and definition of the "Unit" set forth in the Declaration (which generally only includes the interior airspace between the perimeter walls and excludes interior structural components).



THE ESTATES AT ACQUALINA
The World's Finest Residences

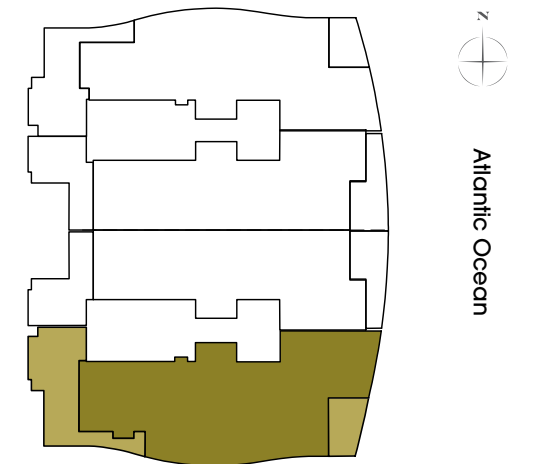
line 04 -Donatello

4 Bedrooms · 6.5 Baths · Den
Great Room · Service Room
Terrace w/SPA & Summer Kitchen



| | SQ FT | M ² |
|--------------|--------------|----------------|
| Interior | 3,813 | 354.2 |
| Terrace | 1,096 | 101.8 |
| Total | 4,909 | 456.0 |

Floors: 4 to 12 & 17 to 30



Brickell
REALTY GROUP

2071 NW 112th Avenue, Miami, FL 33172

www.brickell-realty.com/EstatesatAcqualina.html

Oral representation cannot be relied upon as correctly stating representations of the developer. Pictures of homes and condos may not reflect the final products which may vary. Dimensions, specifications, improvements, rendering, plans, land uses, materials, amenities, prices, and availability are subject to change at the developer's discretion without notice.

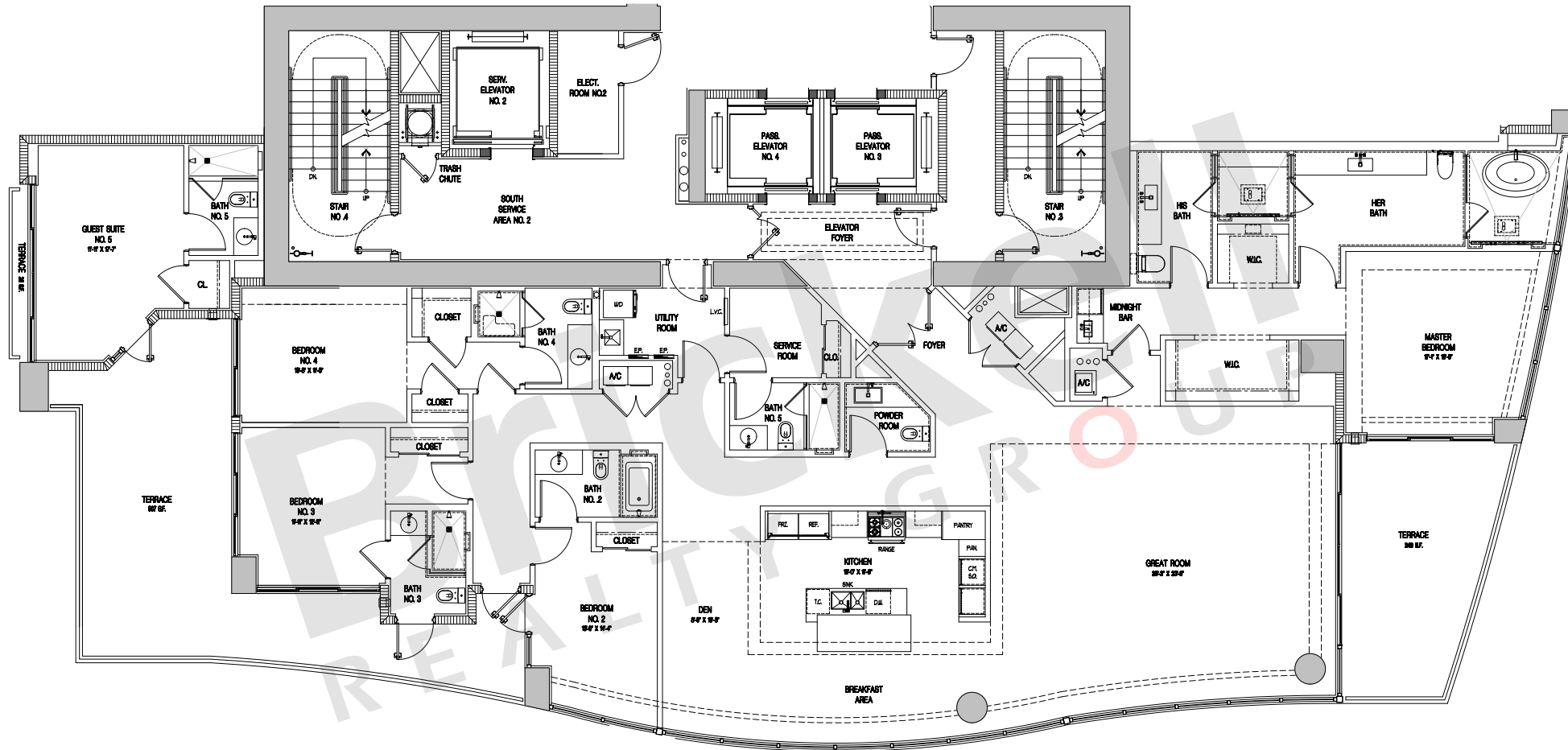
Stated dimensions are approximate and measured to the exterior boundaries of the exterior walls and the centerline of interior demising walls which in fact vary from the dimensions that would be determined by using the description and definition of the "Unit" set forth in the Declaration (which generally only includes the interior airspace between the perimeter walls and excludes interior structural components).



THE ESTATES AT ACQUALINA
The World's Finest Residences

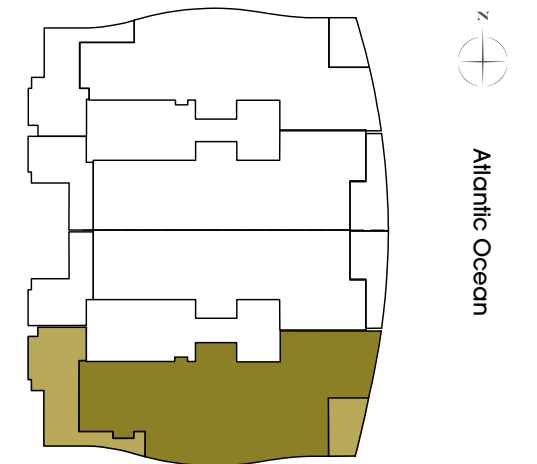
**Line 04 - Donatello with
Optional Guest Suite**

5 Bedrooms · 7.5 Baths · Den
Great Room · Service Room
Terrace w/Summer Kitchen



| | SQ FT | M ² |
|--------------|--------------|----------------|
| Interior | 3,813 | 354.2 |
| Guest Suite | 318 | 29.5 |
| Terrace | 778 | 72.3 |
| Total | 4,909 | 456.0 |

Floors: 4 to 12 & 17 to 30



Brickell
REALTY GROUP

2071 NW 112th Avenue, Miami, FL 33172

www.brickell-realty.com/EstatesatAcqualina.html

Oral representation cannot be relied upon as correctly stating representations of the developer. Pictures of homes and condos may not reflect the final products which may vary. Dimensions, specifications, improvements, rendering, plans, land uses, materials, amenities, prices, and availability are subject to change at the developer's discretion without notice.

Stated dimensions are approximate and measured to the exterior boundaries of the exterior walls and the centerline of interior demising walls which in fact vary from the dimensions that would be determined by using the description and definition of the "Unit" set forth in the Declaration (which generally only includes the interior airspace between the perimeter walls and excludes interior structural components).



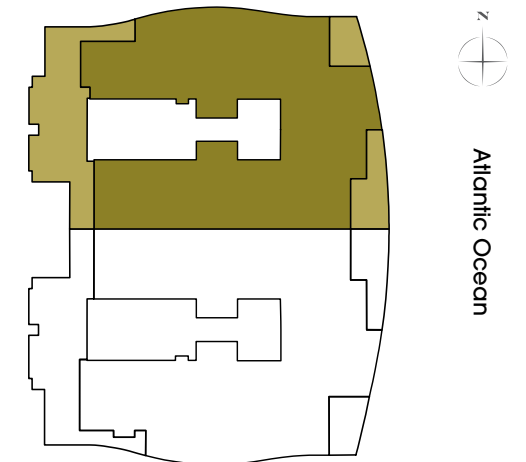
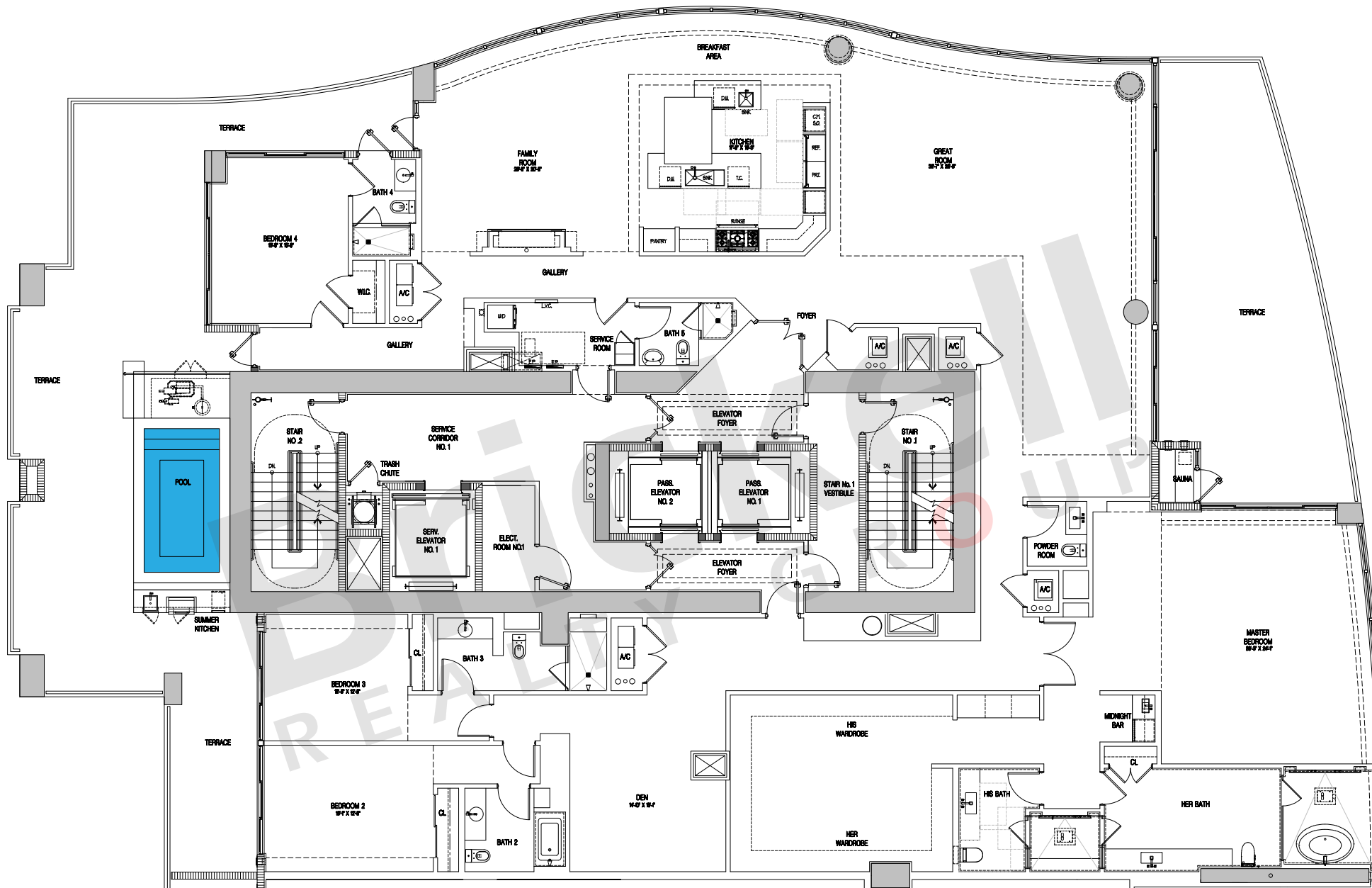
THE ESTATES AT ACQUALINA
The World's Finest Residences

Lower Penthouse 01
Casa Di Sogni

4 Bedrooms · 5.5 Baths · Den · Great Room
Terrace w/SPA, Sauna & Summer Kitchen

| | SQ FT | M ² |
|--------------|--------------|----------------|
| Interior | 6,251 | 580.7 |
| Terrace | 1,965 | 182.5 |
| Total | 8,216 | 763.2 |

Floor: 47



Brickell
REALTY GROUP

2071 NW 112th Avenue, Miami, FL 33172

www.brickell-realty.com/EstatesatAcqualina.html

Oral representation cannot be relied upon as correctly stating representations of the developer. Pictures of homes and condos may not reflect the final products which may vary. Dimensions, specifications, improvements, rendering, plans, land uses, materials, amenities, prices, and availability are subject to change at the developer's discretion without notice.

Stated dimensions are approximate and measured to the exterior boundaries of the exterior walls and the centerline of interior demising walls which in fact vary from the dimensions that would be determined by using the description and definition of the "Unit" set forth in the Declaration (which generally only includes the interior airspace between the perimeter walls and excludes interior structural components).



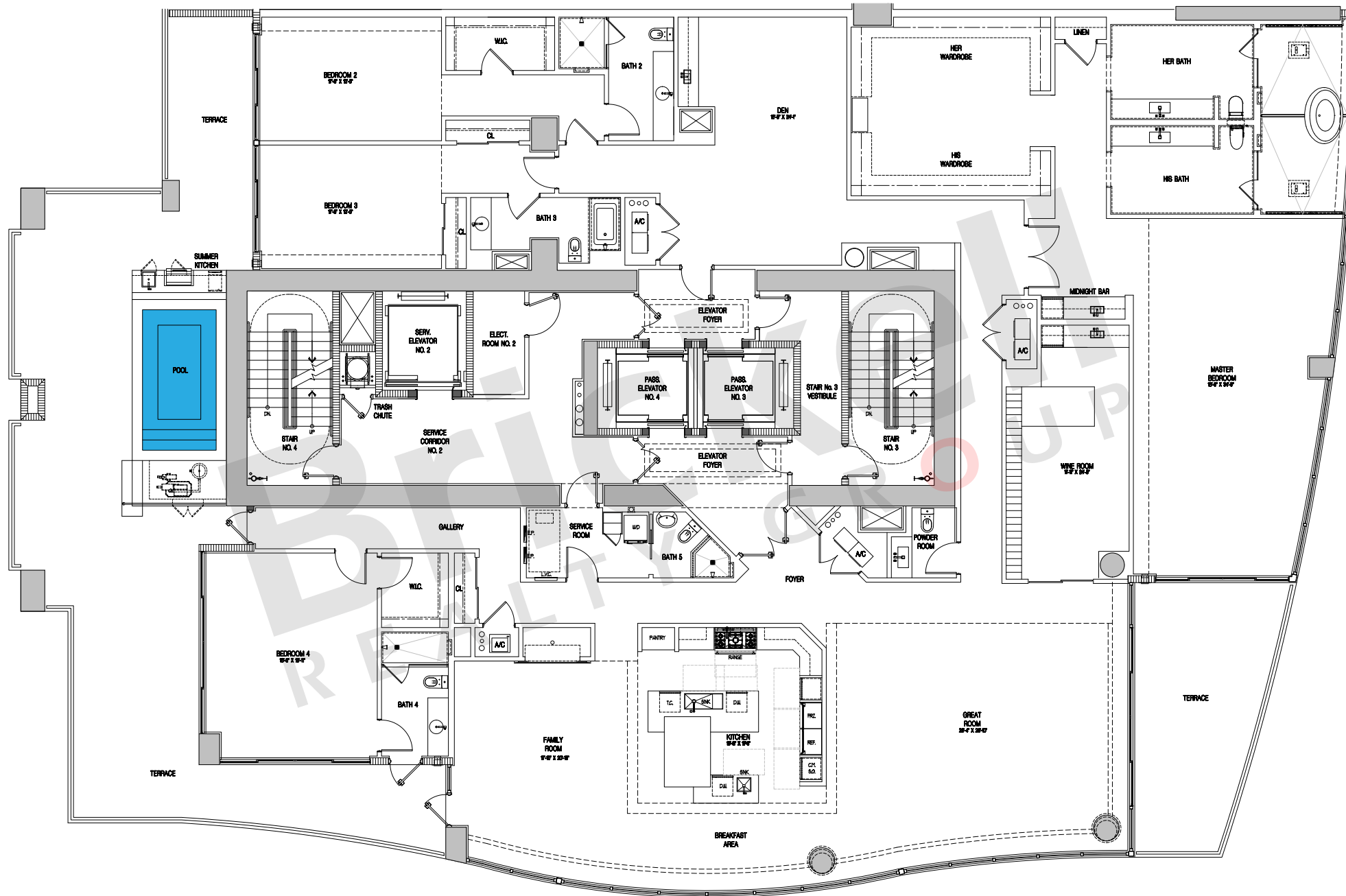
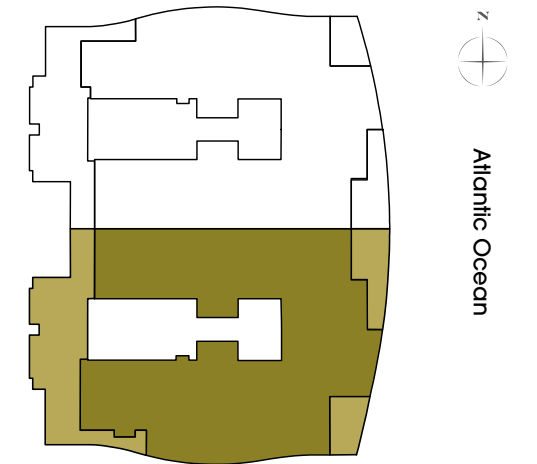
THE ESTATES AT ACQUALINA
The World's Finest Residences

Lower Penthouse 02
Casa Di Ricchezza

4 Bedrooms · 5.5 Baths · Den · Wine Room · Great Room · Family Room · Service Room · Terrace w/Pool & Summer Kitchen

| | SQ FT | M ² |
|--------------|--------------|----------------|
| Interior | 6,886 | 639.7 |
| Terrace | 1,784 | 165.7 |
| Total | 8,670 | 805.4 |

Floor: 47



Brickell
REALTY GROUP

2071 NW 112th Avenue, Miami, FL 33172

www.brickell-realty.com/EstatesatAcqualina.html

Oral representation cannot be relied upon as correctly stating representations of the developer. Pictures of homes and condos may not reflect the final products which may vary. Dimensions, specifications, improvements, rendering, plans, land uses, materials, amenities, prices, and availability are subject to change at the developer's discretion without notice.

Stated dimensions are approximate and measured to the exterior boundaries of the exterior walls and the centerline of interior demising walls which in fact vary from the dimensions that would be determined by using the description and definition of the "Unit" set forth in the Declaration (which generally only includes the interior airspace between the perimeter walls and excludes interior structural components).



THE ESTATES AT ACQUALINA

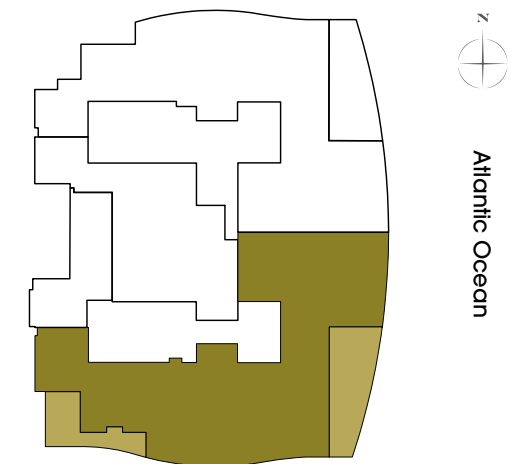
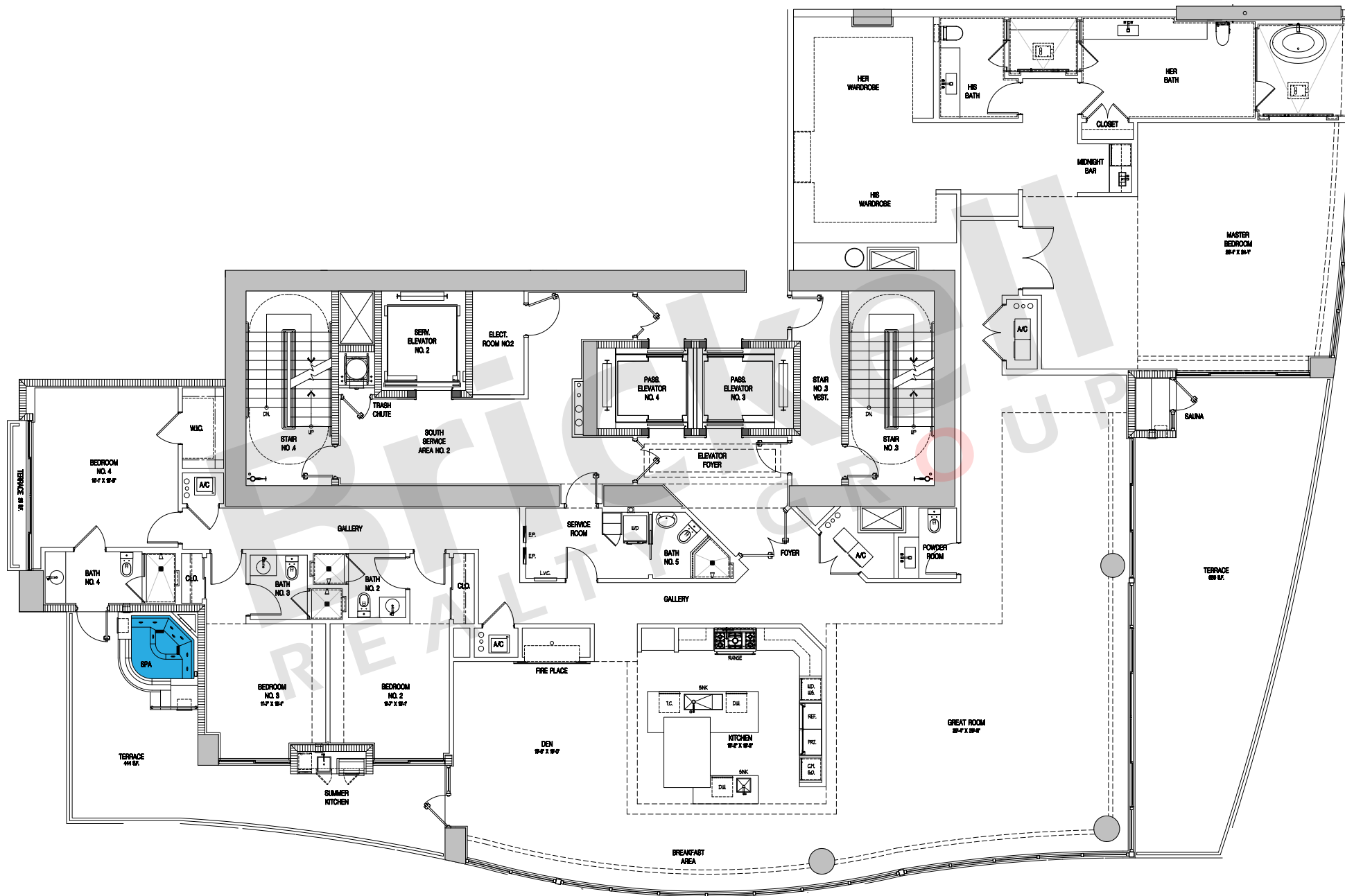
The World's Finest Residences

Line 07 - Milano

4 Bedrooms · 6.5 Baths · Study · Den
Great Room · Service Room · Terrace
w/SPA, Sauna & Summer Kitchen

| | SQ FT | M ² |
|--------------|--------------|----------------|
| Interior | 5,573 | 517.7 |
| Terrace | 1,129 | 104.9 |
| Total | 6,702 | 622.6 |

Floors: 14 to 16 & 31 to 46



Brickell

REALTY GROUP

2071 NW 112th Avenue, Miami, FL 33172

www.brickell-realty.com/EstatesatAcqualina.html

Oral representation cannot be relied upon as correctly stating representations of the developer. Pictures of homes and condos may not reflect the final products which may vary. Dimensions, specifications, improvements, rendering, plans, land uses, materials, amenities, prices, and availability are subject to change at the developer's discretion without notice.

Stated dimensions are approximate and measured to the exterior boundaries of the exterior walls and the centerline of interior demising walls which in fact vary from the dimensions that would be determined by using the description and definition of the "Unit" set forth in the Declaration (which generally only includes the interior airspace between the perimeter walls and excludes interior structural components).



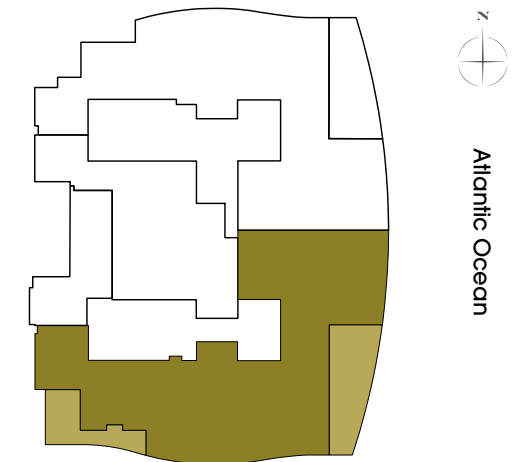
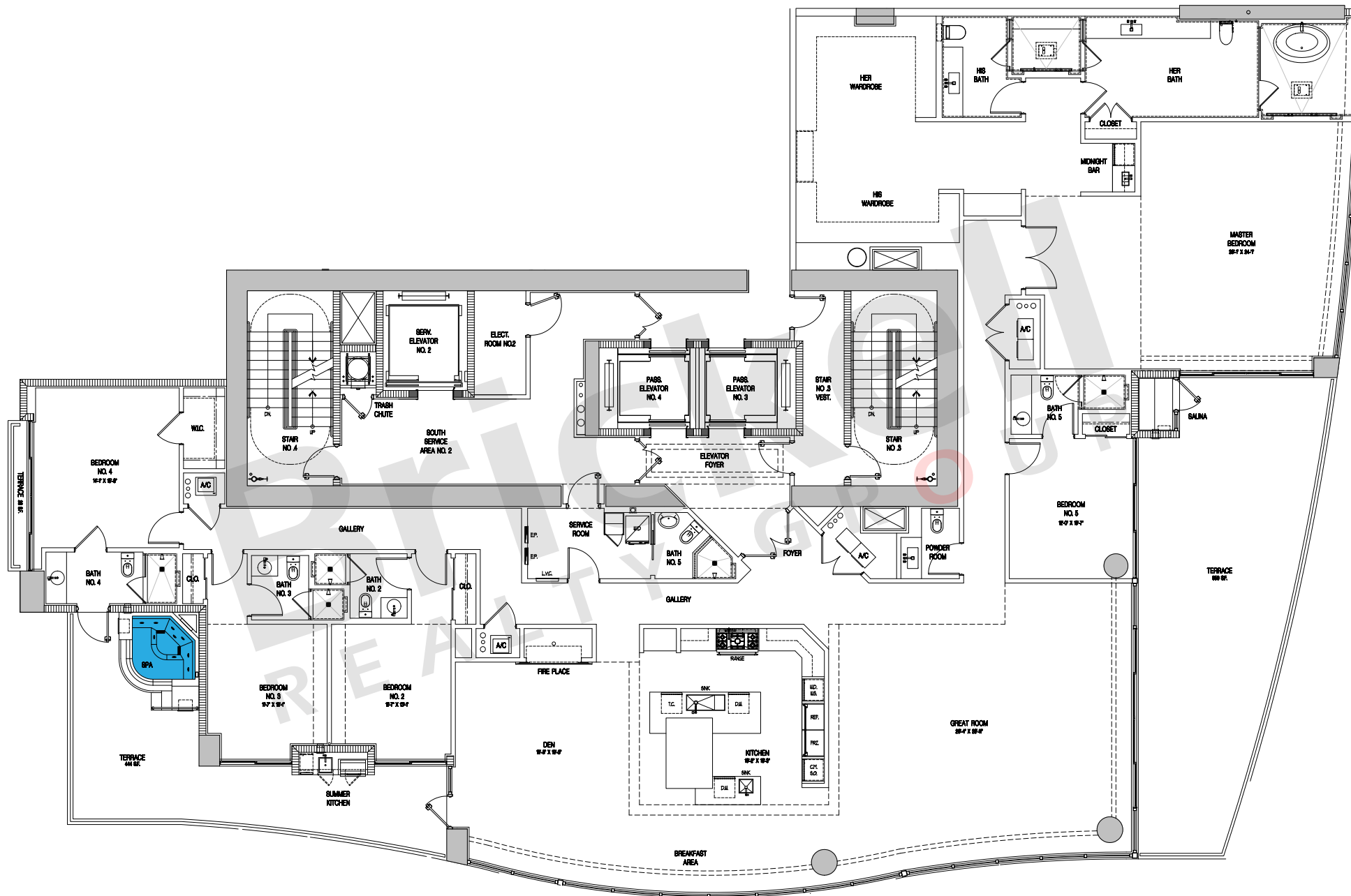
THE ESTATES AT ACQUALINA
The World's Finest Residences

Line 07 - Milano Alternate

5 Bedrooms · 7.5 Baths · Study
Great Room · Service Room · Terrace
w/SPA, Sauna & Summer Kitchen

| | SQ FT | M ² |
|--------------|--------------|----------------|
| Interior | 5,573 | 517.7 |
| Terrace | 1,129 | 104.9 |
| Total | 6,702 | 622.6 |

Floors: 14 to 16 & 31 to 46



Brickell
REALTY GROUP

2071 NW 112th Avenue, Miami, FL 33172

www.brickell-realty.com/EstatesatAcqualina.html

Oral representation cannot be relied upon as correctly stating representations of the developer. Pictures of homes and condos may not reflect the final products which may vary. Dimensions, specifications, improvements, rendering, plans, land uses, materials, amenities, prices, and availability are subject to change at the developer's discretion without notice.

Stated dimensions are approximate and measured to the exterior boundaries of the exterior walls and the centerline of interior demising walls which in fact vary from the dimensions that would be determined by using the description and definition of the "Unit" set forth in the Declaration (which generally only includes the interior airspace between the perimeter walls and excludes interior structural components).



THE ESTATES AT ACQUALINA

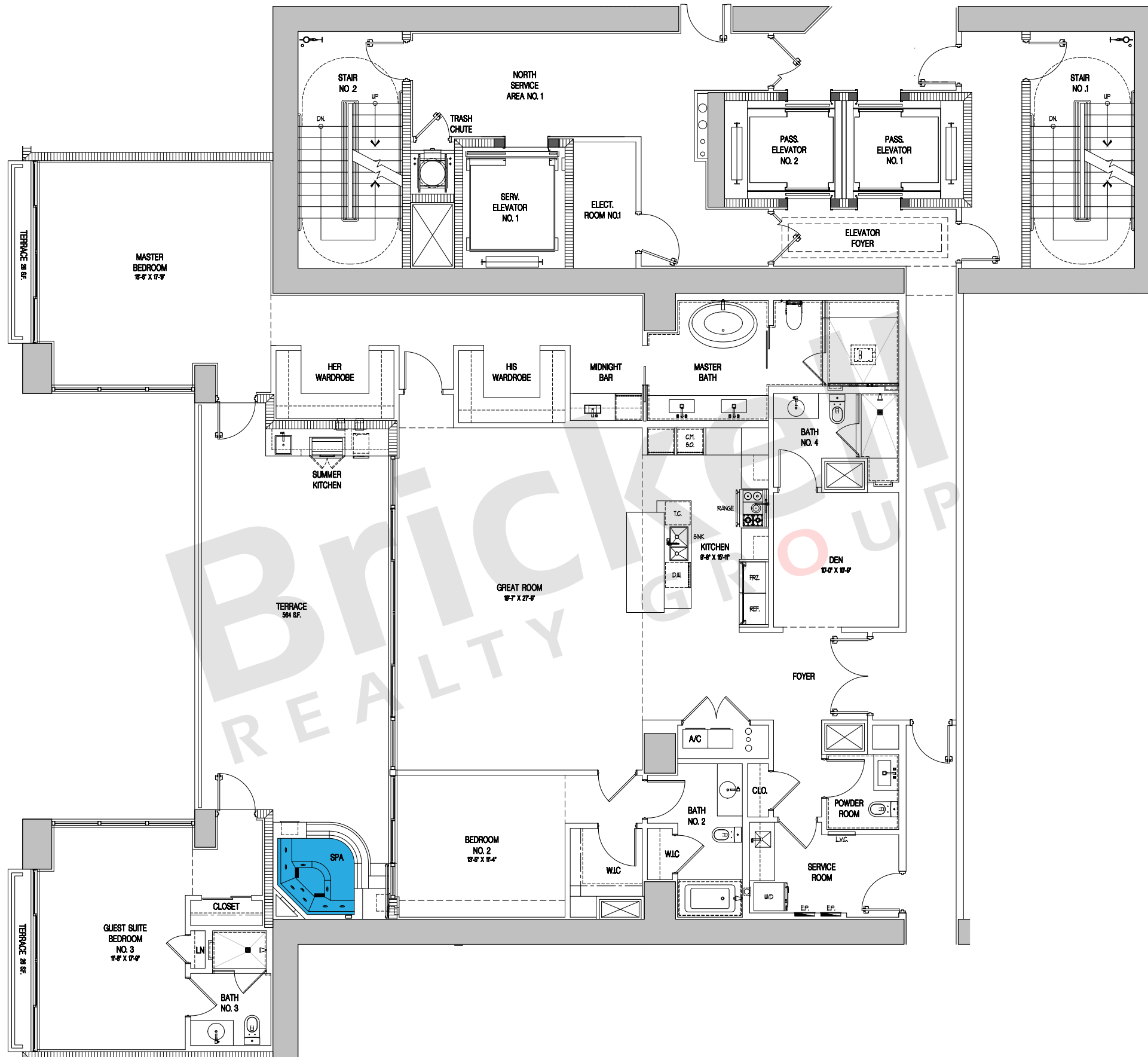
The World's Finest Residences

Line 06 - Positano

3 Bedrooms · 3.5 Baths
Den · Great Room · Service Room
Terrace w/SPA & Summer Kitchen

| | SQ FT | M ² |
|--------------|--------------|----------------|
| Interior | 2,541 | 236.1 |
| Guest Suite | 376 | 34.9 |
| Terrace | 616 | 57.2 |
| Total | 3,533 | 328.2 |

Floors: 31 to 46



Brickell

REALTY GROUP

2071 NW 112th Avenue, Miami, FL 33172

www.brickell-realty.com/EstatesatAcqualina.html

Oral representation cannot be relied upon as correctly stating representations of the developer. Pictures of homes and condos may not reflect the final products which may vary. Dimensions, specifications, improvements, rendering, plans, land uses, materials, amenities, prices, and availability are subject to change at the developer's discretion without notice.

Stated dimensions are approximate and measured to the exterior boundaries of the exterior walls and the centerline of interior demising walls which in fact vary from the dimensions that would be determined by using the description and definition of the "Unit" set forth in the Declaration (which generally only includes the interior airspace between the perimeter walls and excludes interior structural components).



THE ESTATES AT ACQUALINA

The World's Finest Residences

Line 06 - Positano

3 Bedrooms · 3.5 Baths
Den · Great Room · Service Room
Terrace w/SPA & Summer Kitchen

| | SQ FT | M ² |
|--------------|--------------|----------------|
| Interior | 2,541 | 236.1 |
| Guest Suite | 376 | 34.9 |
| Terrace | 616 | 57.2 |
| Total | 3,533 | 328.2 |

Floors: 14, 15 & 16



Brickell REALTY GROUP

2071 NW 112th Avenue, Miami, FL 33172

www.brickell-realty.com/EstatesatAcqualina.html

Oral representation cannot be relied upon as correctly stating representations of the developer. Pictures of homes and condos may not reflect the final products which may vary. Dimensions, specifications, improvements, rendering, plans, land uses, materials, amenities, prices, and availability are subject to change at the developer's discretion without notice.

Stated dimensions are approximate and measured to the exterior boundaries of the exterior walls and the centerline of interior demising walls which in fact vary from the dimensions that would be determined by using the description and definition of the "Unit" set forth in the Declaration (which generally only includes the interior airspace between the perimeter walls and excludes interior structural components).



THE ESTATES AT ACQUALINA

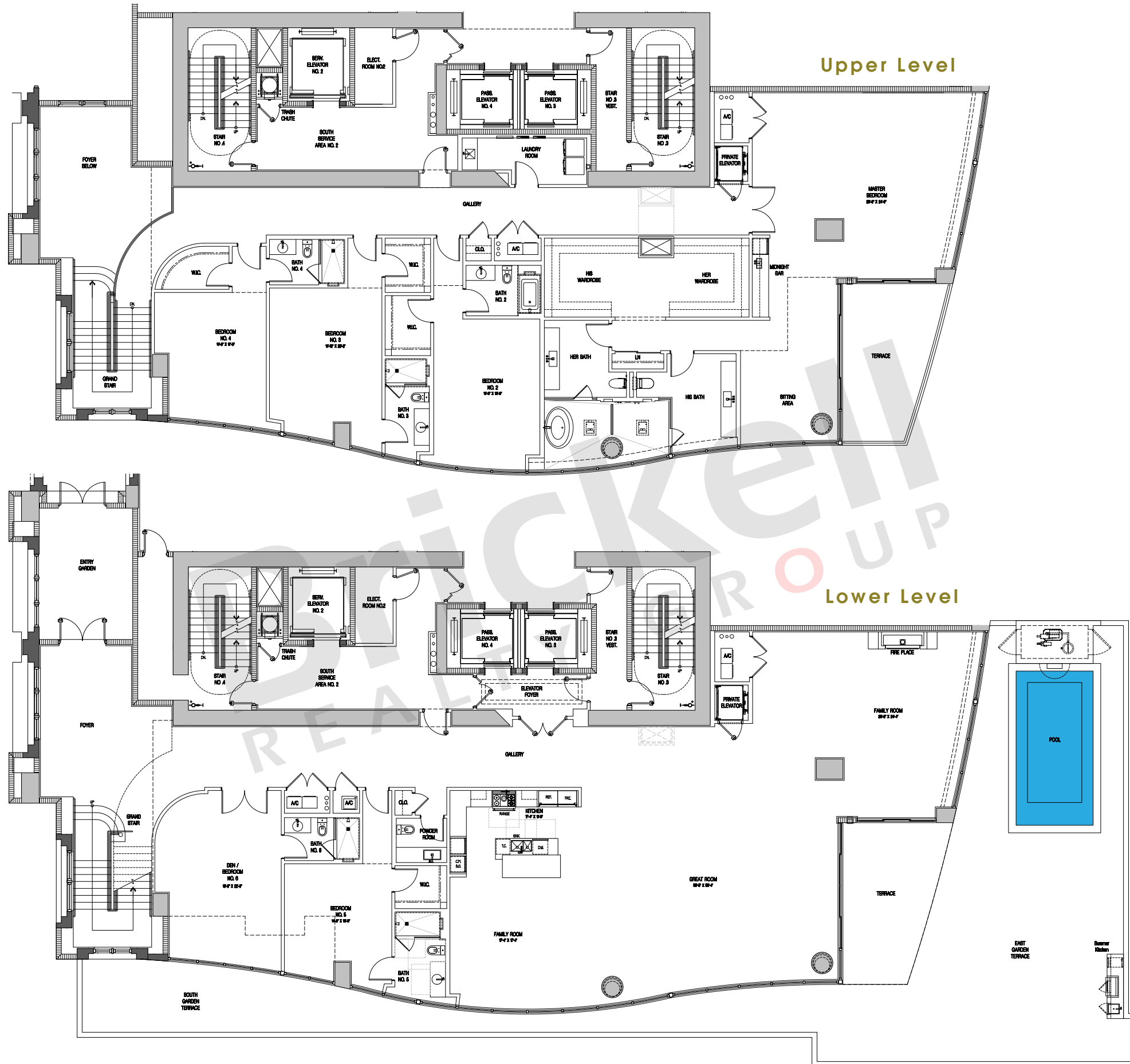
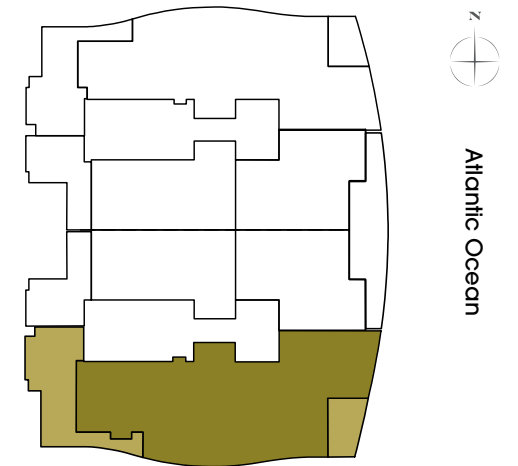
The World's Finest Residences

Single Family 01

6 Bedrooms · 7.5 Baths · Great Room · Family Room · Sitting Room · Terrace w/Pool & Summer Kitchen

| | SQ FT | M ² |
|----------------------|---------------|----------------|
| Interior Lower Level | 4,605 | 427.8 |
| Terrace Lower Level | 2,487 | 231.0 |
| Interior Upper Level | 4,265 | 396.2 |
| Terrace Upper Level | 248 | 23.0 |
| Total | 11,605 | 1078.0 |

Floor: 1 - Duplex



Brickell REALTY GROUP

2071 NW 112th Avenue, Miami, FL 33172

www.brickell-realty.com/EstatesatAcqualina.html

Oral representation cannot be relied upon as correctly stating representations of the developer. Pictures of homes and condos may not reflect the final products which may vary. Dimensions, specifications, improvements, rendering, plans, land uses, materials, amenities, prices, and availability are subject to change at the developer's discretion without notice.

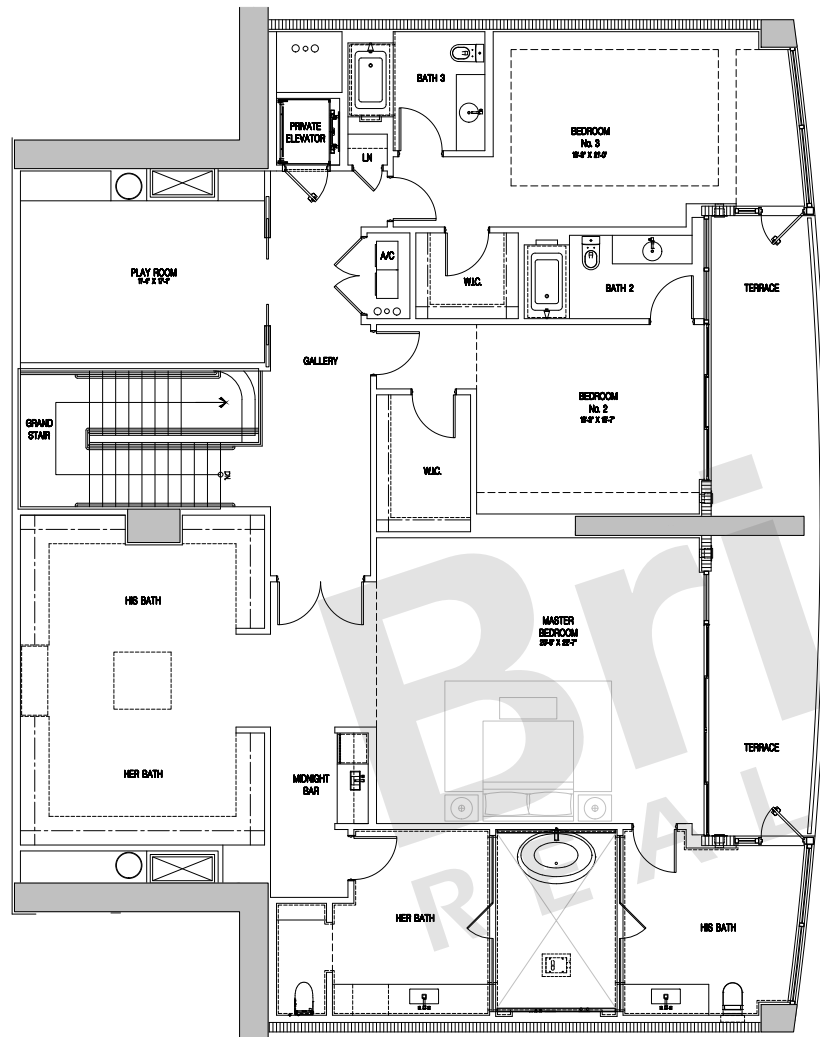
Stated dimensions are approximate and measured to the exterior boundaries of the exterior walls and the centerline of interior demising walls which in fact vary from the dimensions that would be determined by using the description and definition of the "Unit" set forth in the Declaration (which generally only includes the interior airspace between the perimeter walls and excludes interior structural components).



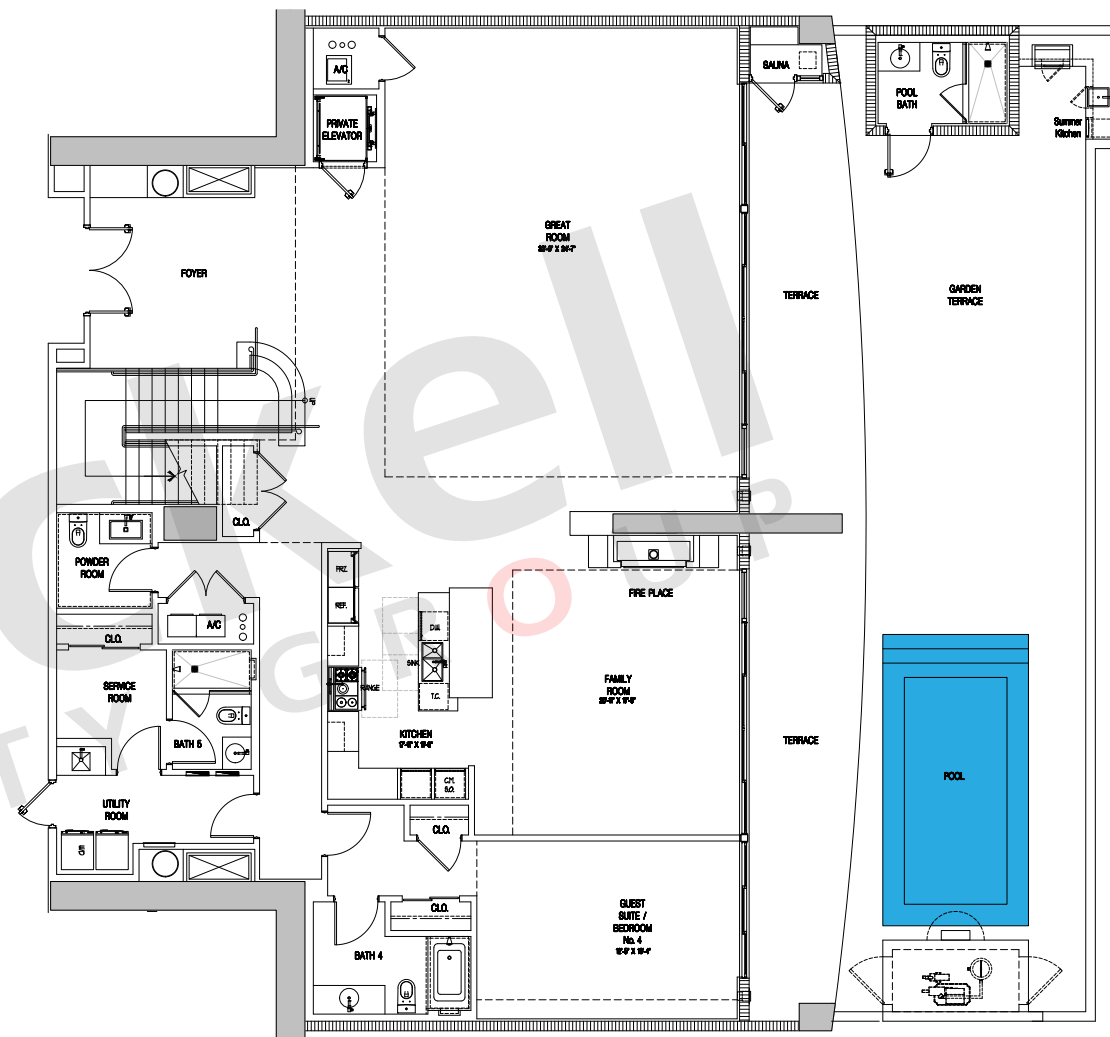
THE ESTATES AT ACQUALINA
The World's Finest Residences

Single Family 02

4 Bedrooms · 6.5 Baths · Great Room · Family Room · Service Room
Terrace w/Pool & Summer Kitchen



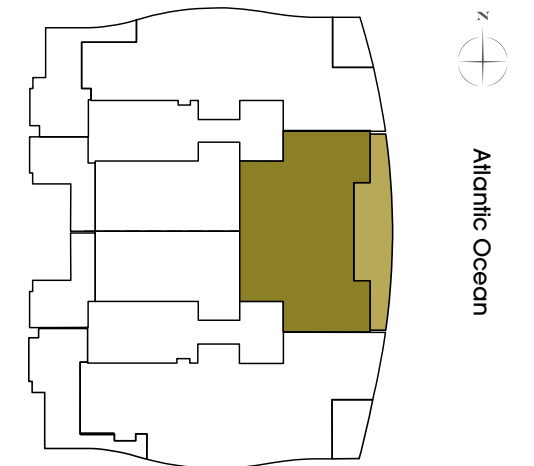
Upper Level



Lower Level

| | SQ FT | M ² |
|----------------------|--------------|----------------|
| Interior Lower Level | 3,152 | 292.8 |
| Terrace Lower Level | 1,498 | 139.2 |
| Interior Upper Level | 3,146 | 292.3 |
| Terrace Upper Level | 332 | 30.8 |
| Total | 8,128 | 755.1 |

Floor: 1 - Duplex



Brickell
REALTY GROUP

2071 NW 112th Avenue, Miami, FL 33172

www.brickell-realty.com/EstatesatAcqualina.html

Oral representation cannot be relied upon as correctly stating representations of the developer. Pictures of homes and condos may not reflect the final products which may vary. Dimensions, specifications, improvements, rendering, plans, land uses, materials, amenities, prices, and availability are subject to change at the developer's discretion without notice.

Stated dimensions are approximate and measured to the exterior boundaries of the exterior walls and the centerline of interior demising walls which in fact vary from the dimensions that would be determined by using the description and definition of the "Unit" set forth in the Declaration (which generally only includes the interior airspace between the perimeter walls and excludes interior structural components).



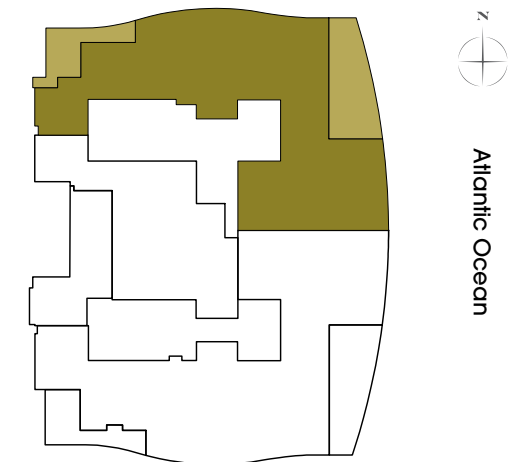
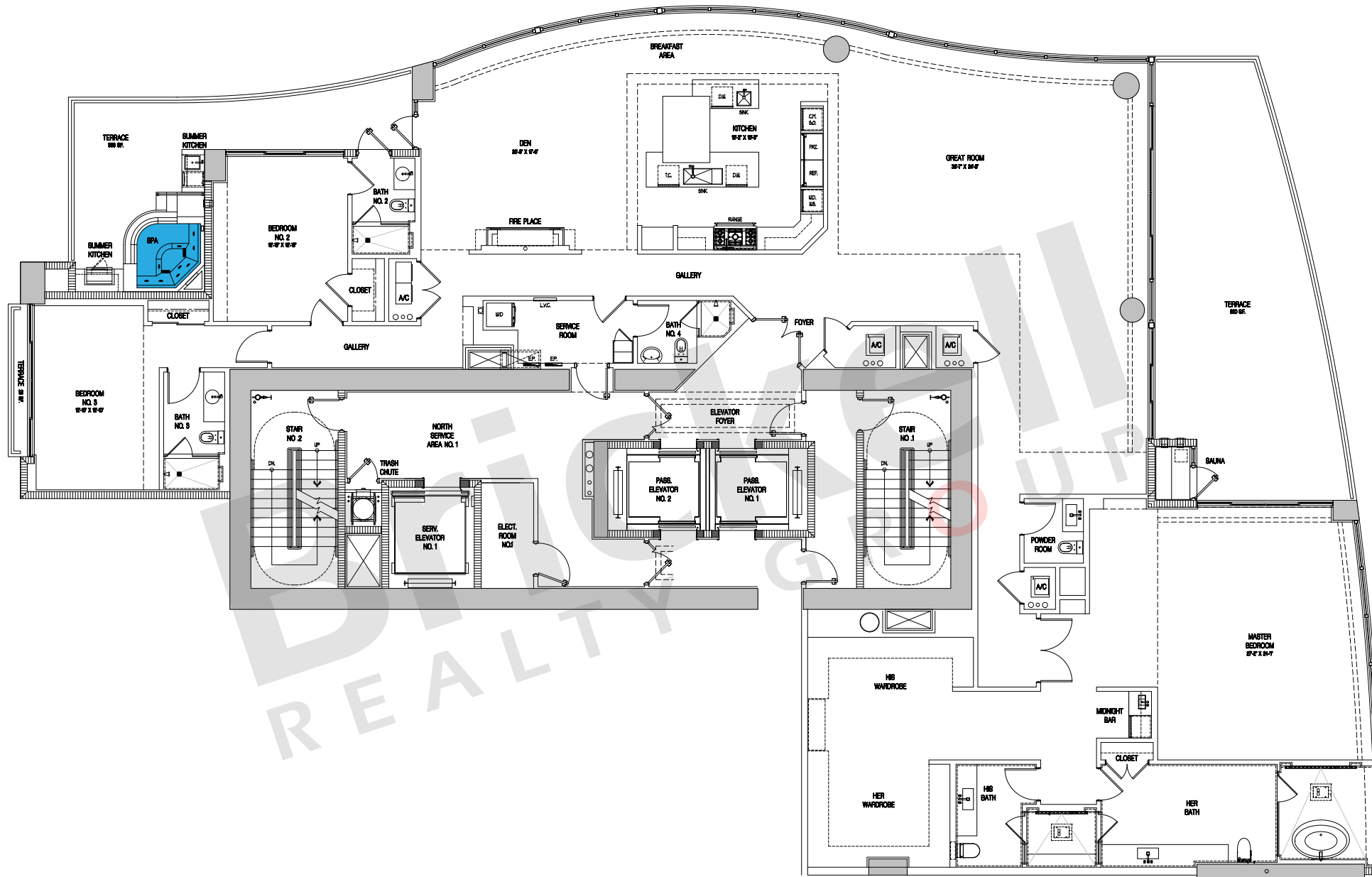
THE ESTATES AT ACQUALINA
The World's Finest Residences

Line 05 - Toscana

3 Bedrooms · 5.5 Baths · Den
Great Room · Service Room · Terrace
w/SPA, Sauna & Summer Kitchen

| | SQ FT | M ² |
|--------------|--------------|----------------|
| Interior | 5,222 | 485.1 |
| Terrace | 1,006 | 93.5 |
| Total | 6,228 | 578.6 |

Floors: 14 to 16 & 31 to 46



Brickell
REALTY GROUP

2071 NW 112th Avenue, Miami, FL 33172

www.brickell-realty.com/EstatesatAcqualina.html

Oral representation cannot be relied upon as correctly stating representations of the developer. Pictures of homes and condos may not reflect the final products which may vary. Dimensions, specifications, improvements, rendering, plans, land uses, materials, amenities, prices, and availability are subject to change at the developer's discretion without notice.

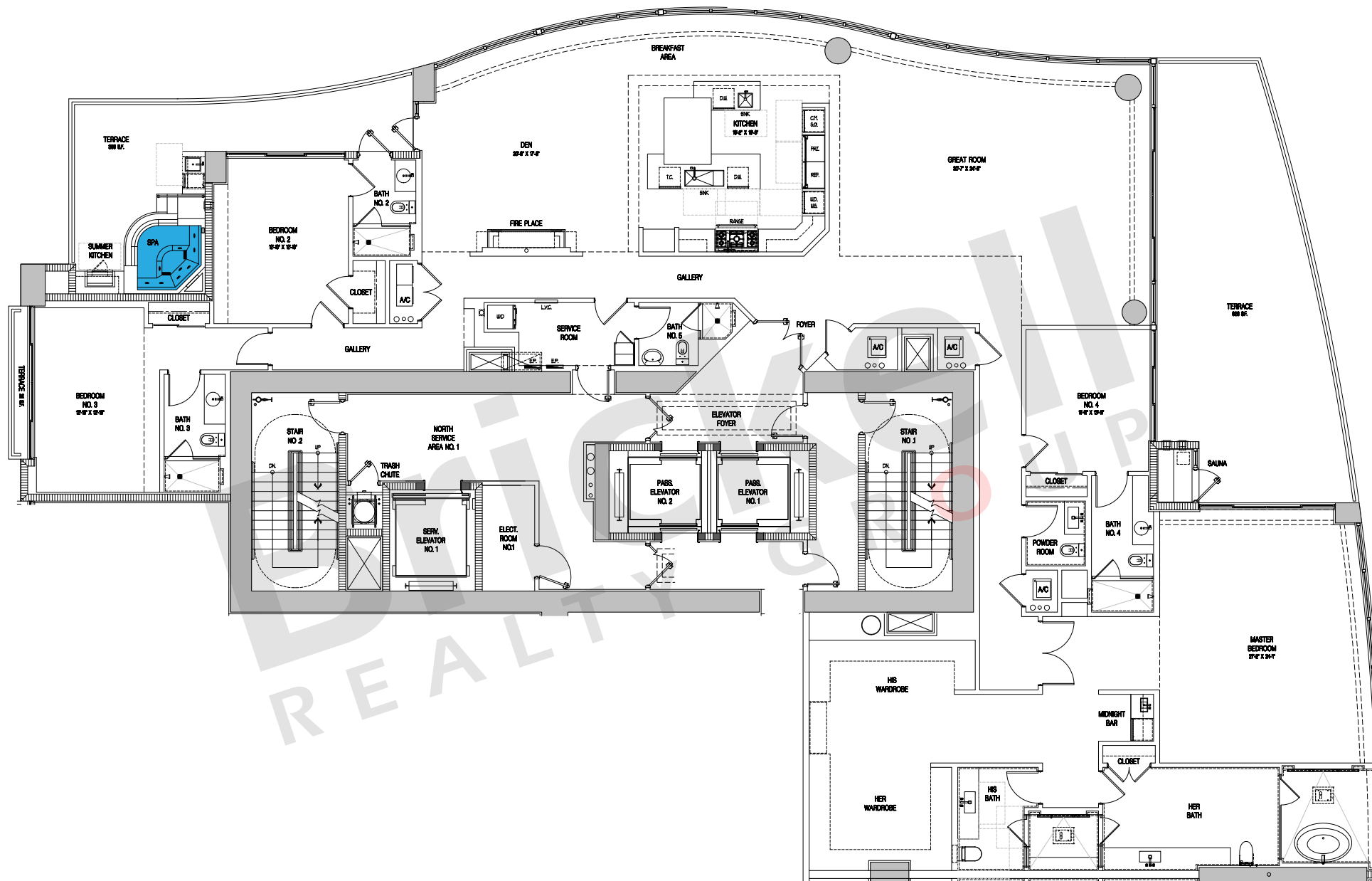
Stated dimensions are approximate and measured to the exterior boundaries of the exterior walls and the centerline of interior demising walls which in fact vary from the dimensions that would be determined by using the description and definition of the "Unit" set forth in the Declaration (which generally only includes the interior airspace between the perimeter walls and excludes interior structural components).



THE ESTATES AT ACQUALINA
The World's Finest Residences

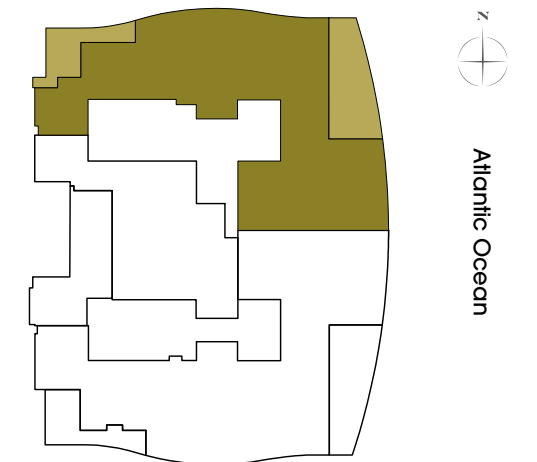
Line 05 - Toscana Alternate

4 Bedrooms · 6.5 Baths
Great Room · Service Room · Terrace
w/SPA, Sauna & Summer Kitchen



| | SQ FT | M ² |
|--------------|--------------|----------------|
| Interior | 5,222 | 485.1 |
| Terrace | 1,006 | 93.5 |
| Total | 6,228 | 578.6 |

Floors: 14 to 16 & 31 to 46



Brickell
REALTY GROUP

2071 NW 112th Avenue, Miami, FL 33172

www.brickell-realty.com/EstatesatAcqualina.html

Oral representation cannot be relied upon as correctly stating representations of the developer. Pictures of homes and condos may not reflect the final products which may vary. Dimensions, specifications, improvements, rendering, plans, land uses, materials, amenities, prices, and availability are subject to change at the developer's discretion without notice.

Stated dimensions are approximate and measured to the exterior boundaries of the exterior walls and the centerline of interior demising walls which in fact vary from the dimensions that would be determined by using the description and definition of the "Unit" set forth in the Declaration (which generally only includes the interior airspace between the perimeter walls and excludes interior structural components).



THE ESTATES AT ACQUALINA

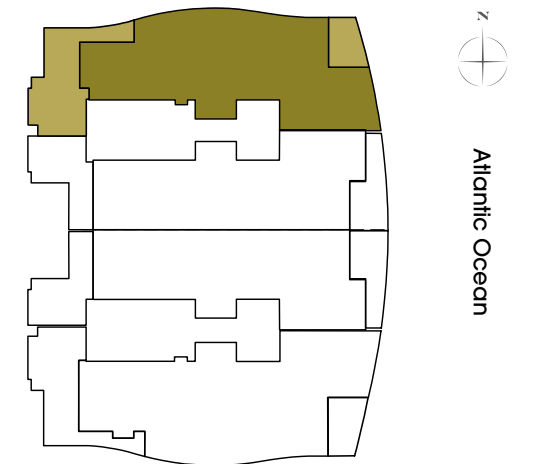
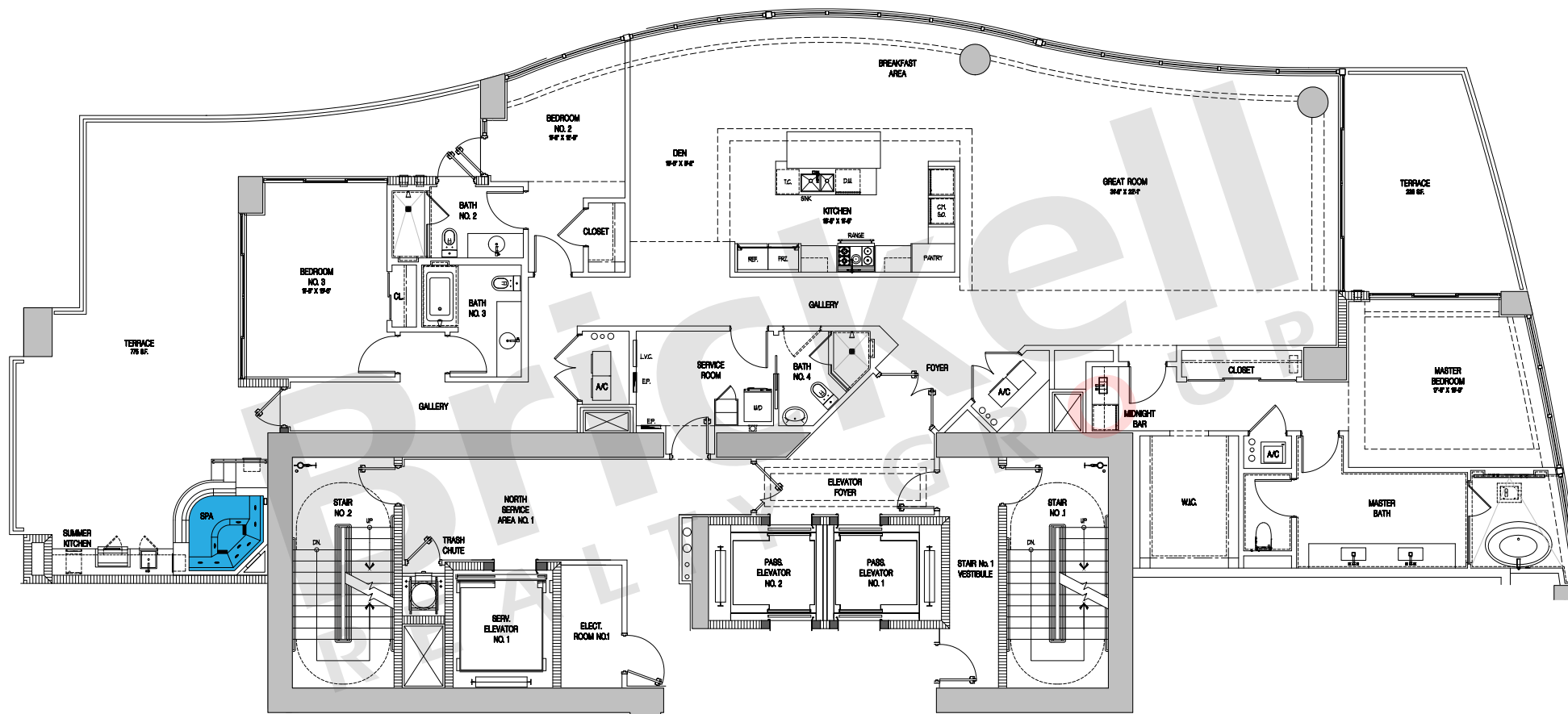
The World's Finest Residences

Line 01 - Uffizi

3 Bedrooms · 4 Baths · Den
Great Room · Service Room
Terrace w/SPA & Summer Kitchen

| | SQ FT | M ² |
|--------------|--------------|----------------|
| Interior | 3,433 | 318.9 |
| Terrace | 1,003 | 93.2 |
| Total | 4,436 | 412.1 |

Floors: 4 to 12 & 17 to 30



Brickell

REALTY GROUP

2071 NW 112th Avenue, Miami, FL 33172

www.brickell-realty.com/EstatesatAcqualina.html

Oral representation cannot be relied upon as correctly stating representations of the developer. Pictures of homes and condos may not reflect the final products which may vary. Dimensions, specifications, improvements, rendering, plans, land uses, materials, amenities, prices, and availability are subject to change at the developer's discretion without notice.

Stated dimensions are approximate and measured to the exterior boundaries of the exterior walls and the centerline of interior demising walls which in fact vary from the dimensions that would be determined by using the description and definition of the "Unit" set forth in the Declaration (which generally only includes the interior airspace between the perimeter walls and excludes interior structural components).

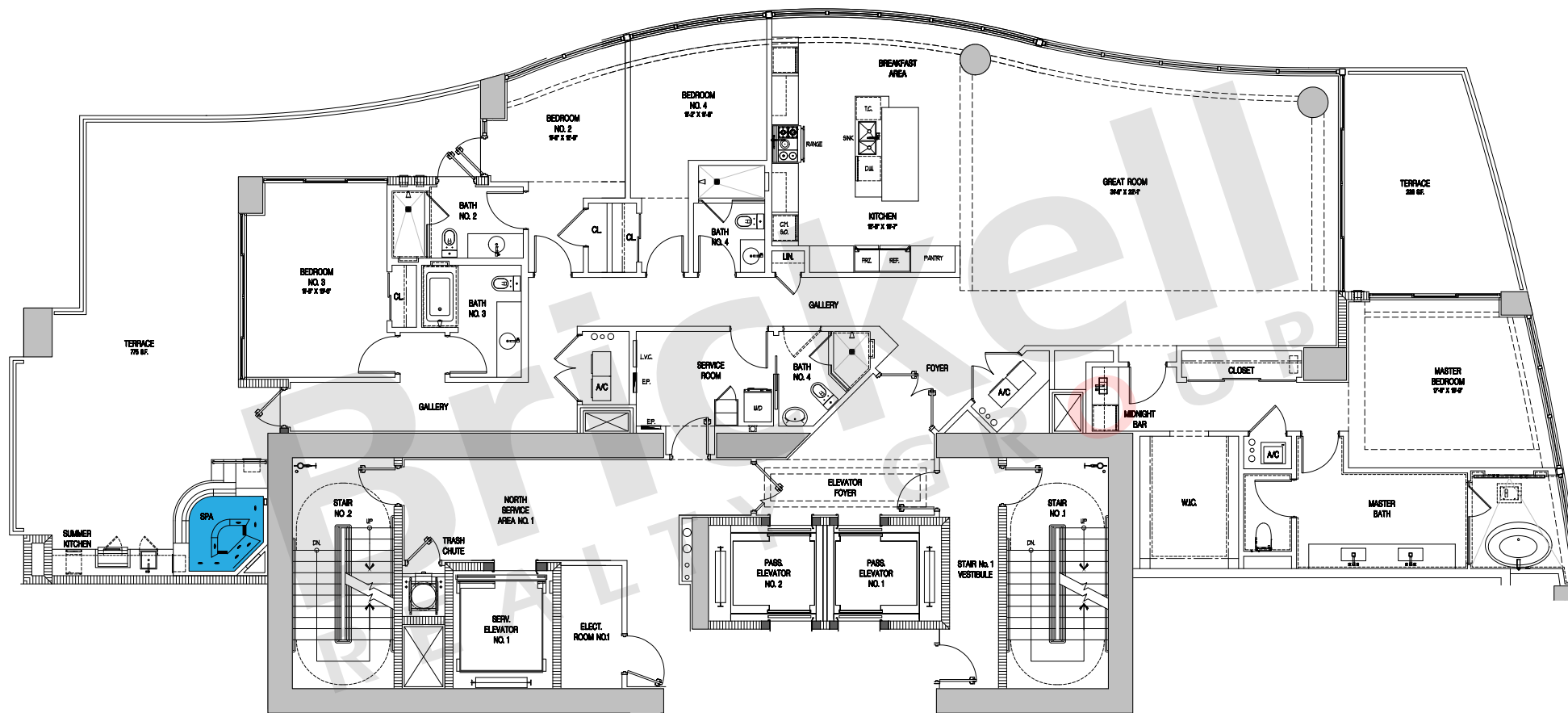


THE ESTATES AT ACQUALINA

The World's Finest Residences

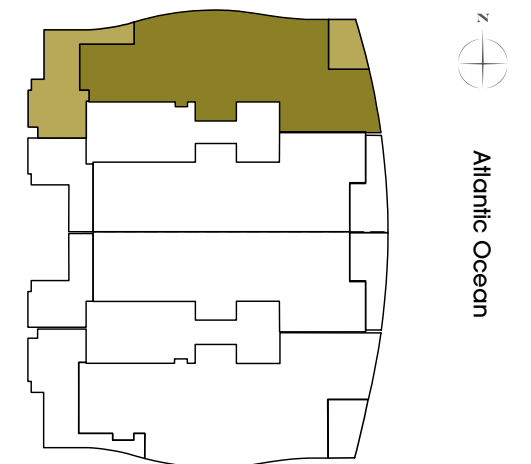
Line 01 - Uffizi with Optional Bedroom

4 Bedrooms · 5 Baths
Great Room · Service Room
Terrace w/SPA & Summer Kitchen



| | SQ FT | M ² |
|--------------|--------------|----------------|
| Interior | 3,433 | 318.9 |
| Terrace | 1,003 | 93.2 |
| Total | 4,436 | 412.1 |

Floors: 4 to 12 & 17 to 30



Brickell

REALTY GROUP

2071 NW 112th Avenue, Miami, FL 33172

www.brickell-realty.com/EstatesatAcqualina.html

Oral representation cannot be relied upon as correctly stating representations of the developer. Pictures of homes and condos may not reflect the final products which may vary. Dimensions, specifications, improvements, rendering, plans, land uses, materials, amenities, prices, and availability are subject to change at the developer's discretion without notice.

Stated dimensions are approximate and measured to the exterior boundaries of the exterior walls and the centerline of interior demising walls which in fact vary from the dimensions that would be determined by using the description and definition of the "Unit" set forth in the Declaration (which generally only includes the interior airspace between the perimeter walls and excludes interior structural components).

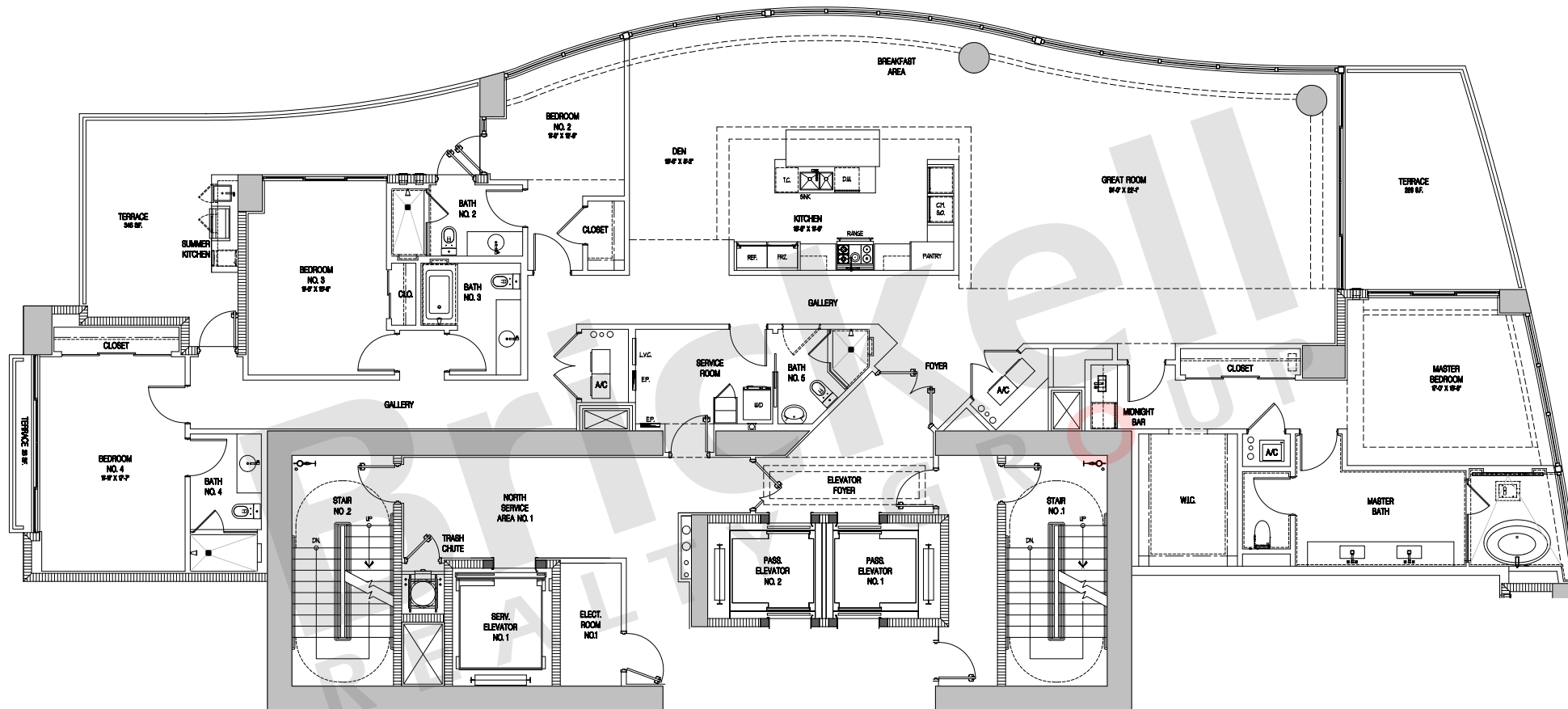


THE ESTATES AT ACQUALINA

The World's Finest Residences

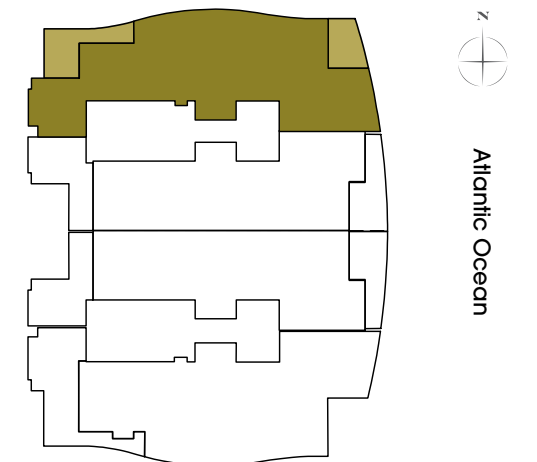
Line 01 - Uffizi Superiore

4 Bedrooms · 5 Baths · Den
Great Room · Service Room
Terrace w/Summer Kitchen



| | SQ FT | M ² |
|--------------|--------------|----------------|
| Interior | 3,840 | 356.7 |
| Terrace | 600 | 55.7 |
| Total | 4,440 | 412.4 |

Floors: 4 to 12 & 17 to 30



Brickell

REALTY GROUP

2071 NW 112th Avenue, Miami, FL 33172

www.brickell-realty.com/EstatesatAcqualina.html

Oral representation cannot be relied upon as correctly stating representations of the developer. Pictures of homes and condos may not reflect the final products which may vary. Dimensions, specifications, improvements, rendering, plans, land uses, materials, amenities, prices, and availability are subject to change at the developer's discretion without notice.

Stated dimensions are approximate and measured to the exterior boundaries of the exterior walls and the centerline of interior demising walls which in fact vary from the dimensions that would be determined by using the description and definition of the "Unit" set forth in the Declaration (which generally only includes the interior airspace between the perimeter walls and excludes interior structural components).



THE ESTATES AT ACQUALINA

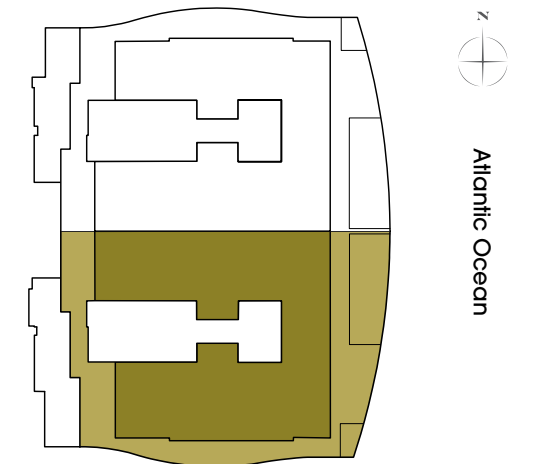
The World's Finest Residences

Upper Duplex Penthouse South

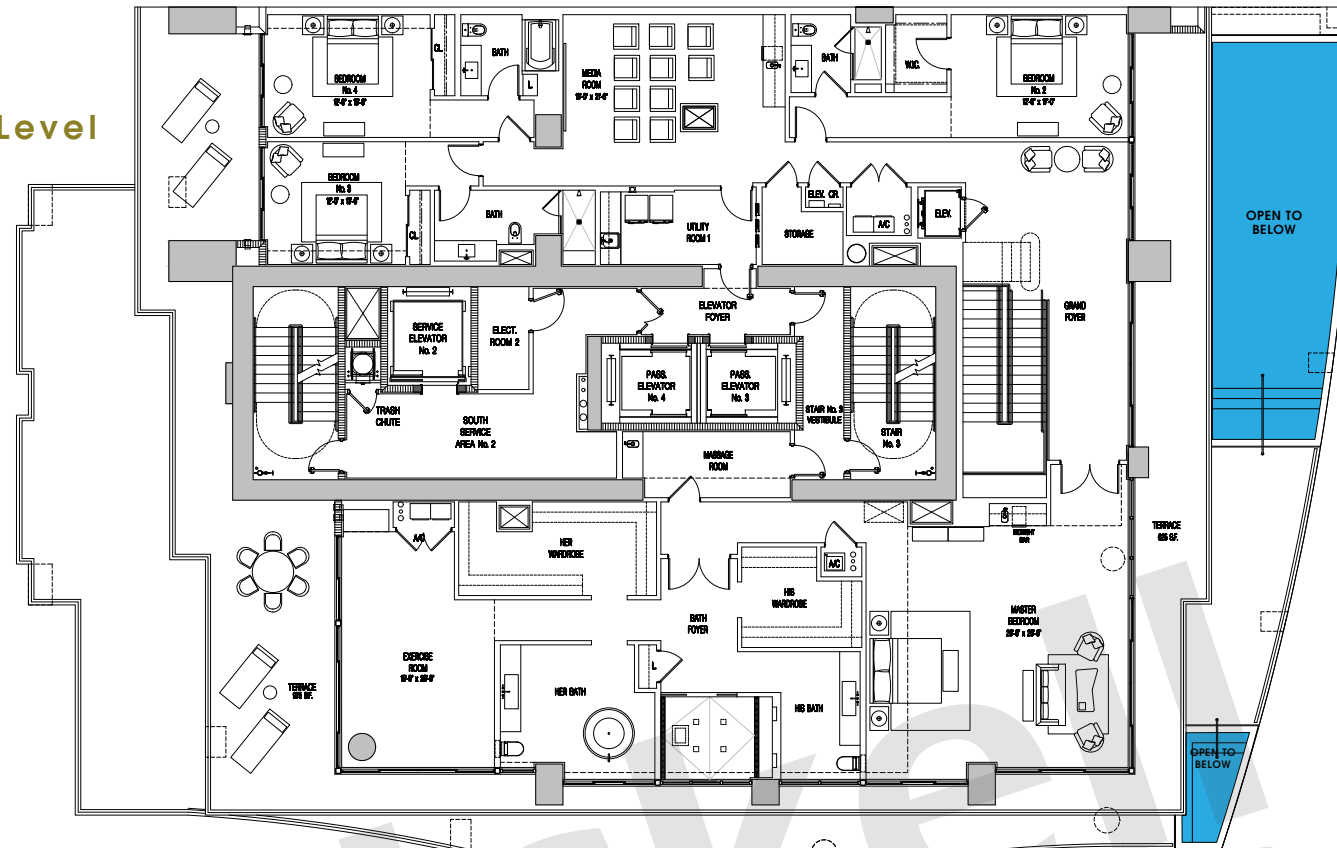
6 Bedrooms · 8.5 Baths · Great Room · Family Room · Media Room · Service Room · Exercise Room · Terrace w/Pool, SPA, Sauna & Summer Kitchen

| | SQ FT | M ² |
|--------------|---------------|----------------|
| Interior | 9,675 | 898.8 |
| Terrace | 4,350 | 404.1 |
| Total | 14,025 | 1302.9 |

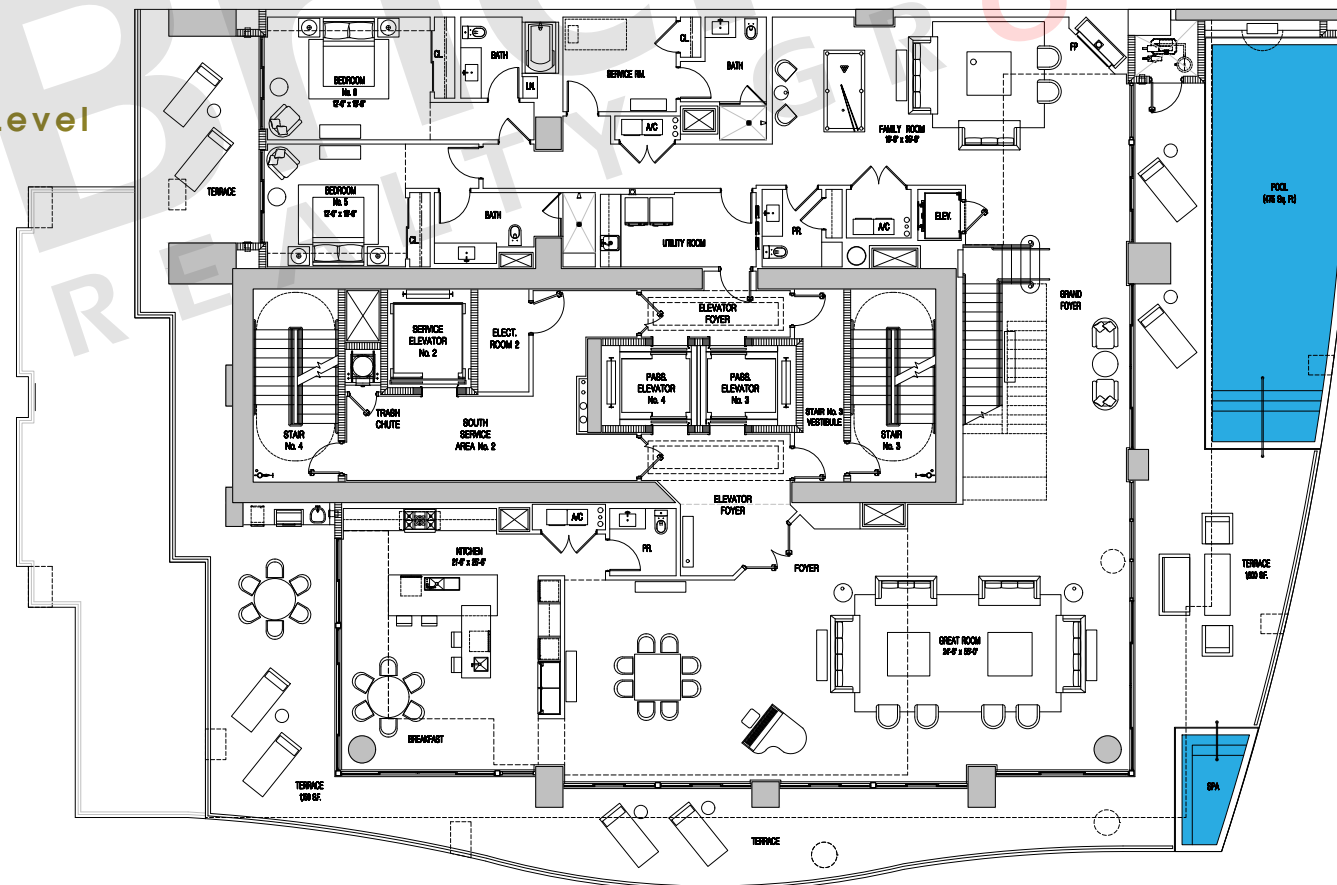
Floor: 48 & 49 - Duplex



Upper Level



Lower Level



Brickell REALTY GROUP

2071 NW 112th Avenue, Miami, FL 33172

www.brickell-realty.com/EstatesatAcqualina.html

Oral representation cannot be relied upon as correctly stating representations of the developer. Pictures of homes and condos may not reflect the final products which may vary. Dimensions, specifications, improvements, rendering, plans, land uses, materials, amenities, prices, and availability are subject to change at the developer's discretion without notice.

Stated dimensions are approximate and measured to the exterior boundaries of the exterior walls and the centerline of interior demising walls which in fact vary from the dimensions that would be determined by using the description and definition of the "Unit" set forth in the Declaration (which generally only includes the interior airspace between the perimeter walls and excludes interior structural components).



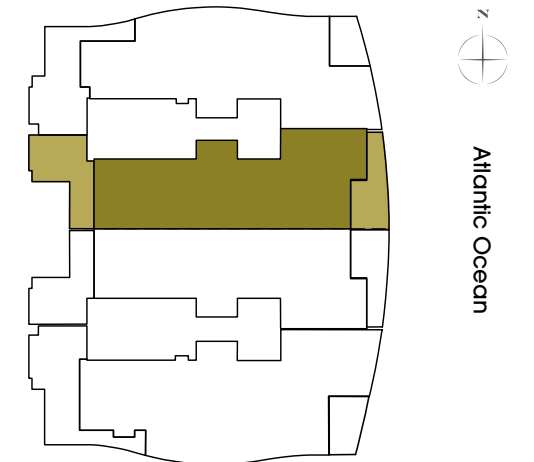
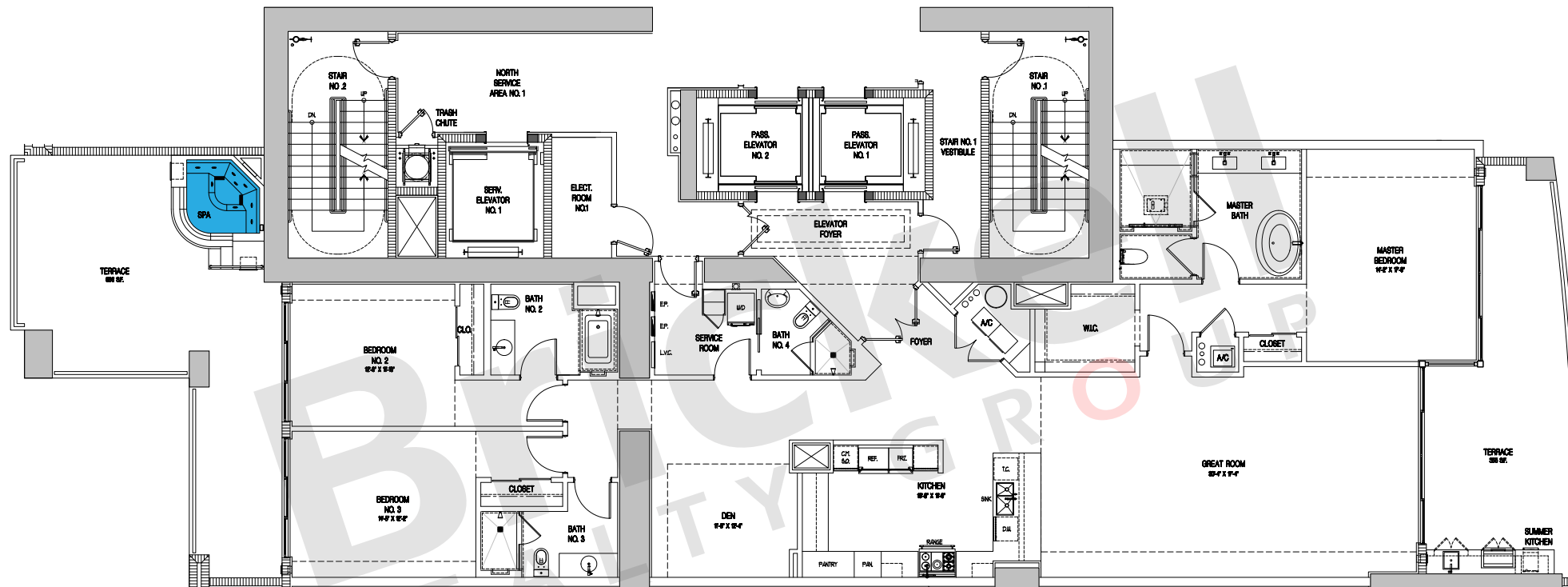
THE ESTATES AT ACQUALINA
The World's Finest Residences

Line 02 - Vechio

3 Bedrooms · 4 Baths · Den
Great Room · Service Room
Terrace w/SPA & Summer Kitchen

| | SQ FT | M ² |
|--------------|--------------|----------------|
| Interior | 2,913 | 270.6 |
| Terrace | 879 | 81.7 |
| Total | 3,792 | 352.3 |

Floors: 4 to 12 & 17 to 30



Brickell
REALTY GROUP

2071 NW 112th Avenue, Miami, FL 33172

www.brickell-realty.com/EstatesatAcqualina.html

Oral representation cannot be relied upon as correctly stating representations of the developer. Pictures of homes and condos may not reflect the final products which may vary. Dimensions, specifications, improvements, rendering, plans, land uses, materials, amenities, prices, and availability are subject to change at the developer's discretion without notice.

Stated dimensions are approximate and measured to the exterior boundaries of the exterior walls and the centerline of interior demising walls which in fact vary from the dimensions that would be determined by using the description and definition of the "Unit" set forth in the Declaration (which generally only includes the interior airspace between the perimeter walls and excludes interior structural components).



THE ESTATES AT ACQUALINA

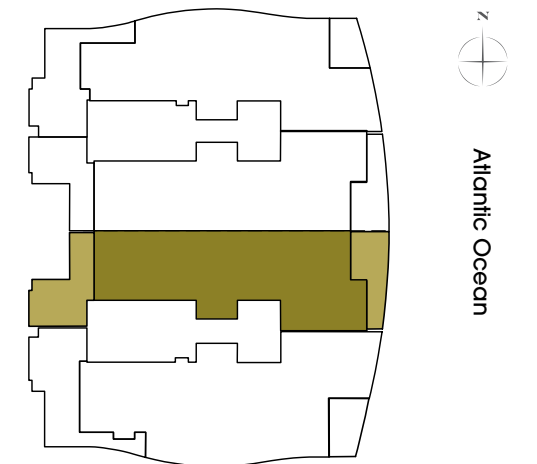
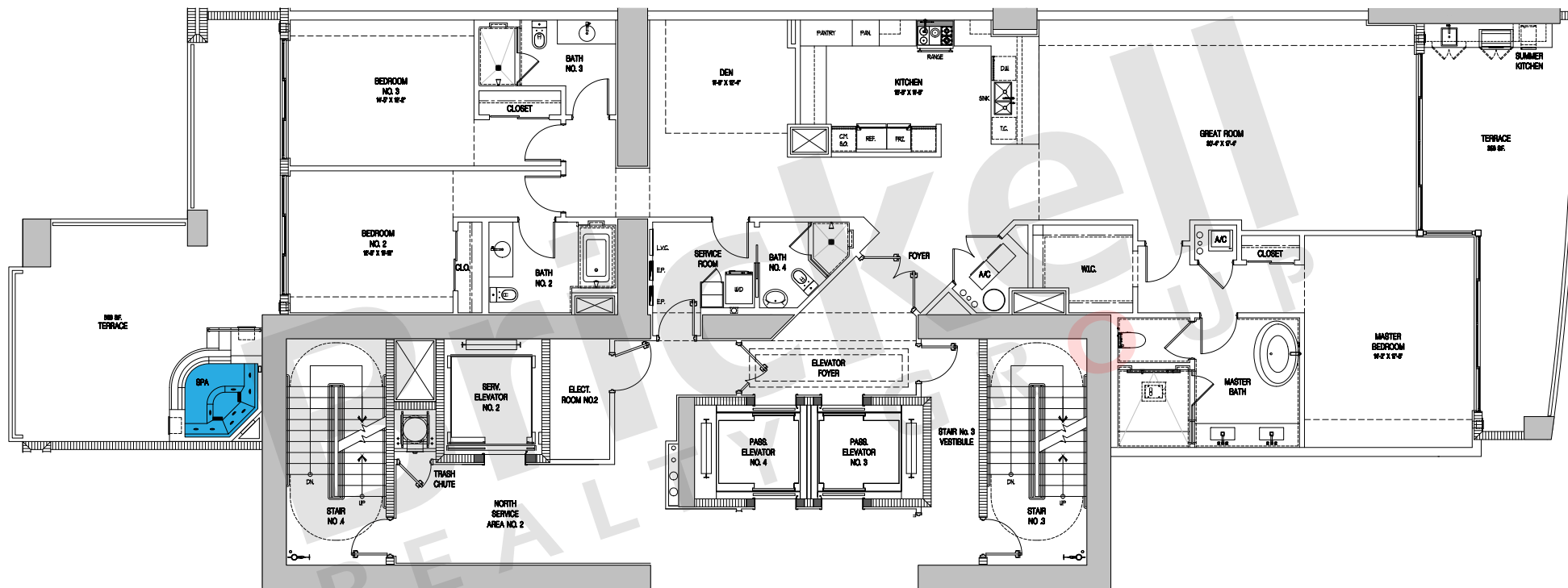
The World's Finest Residences

Line 03 - Vechio

3 Bedrooms · 4 Baths · Den
Great Room · Service Room
Terrace w/SPA & Summer Kitchen

| | SQ FT | M ² |
|--------------|--------------|----------------|
| Interior | 2,913 | 270.6 |
| Terrace | 879 | 81.7 |
| Total | 3,792 | 352.3 |

Floors: 4 to 12 & 17 to 30



Brickell

REALTY GROUP

2071 NW 112th Avenue, Miami, FL 33172

www.brickell-realty.com/EstatesatAcqualina.html

Oral representation cannot be relied upon as correctly stating representations of the developer. Pictures of homes and condos may not reflect the final products which may vary. Dimensions, specifications, improvements, rendering, plans, land uses, materials, amenities, prices, and availability are subject to change at the developer's discretion without notice.

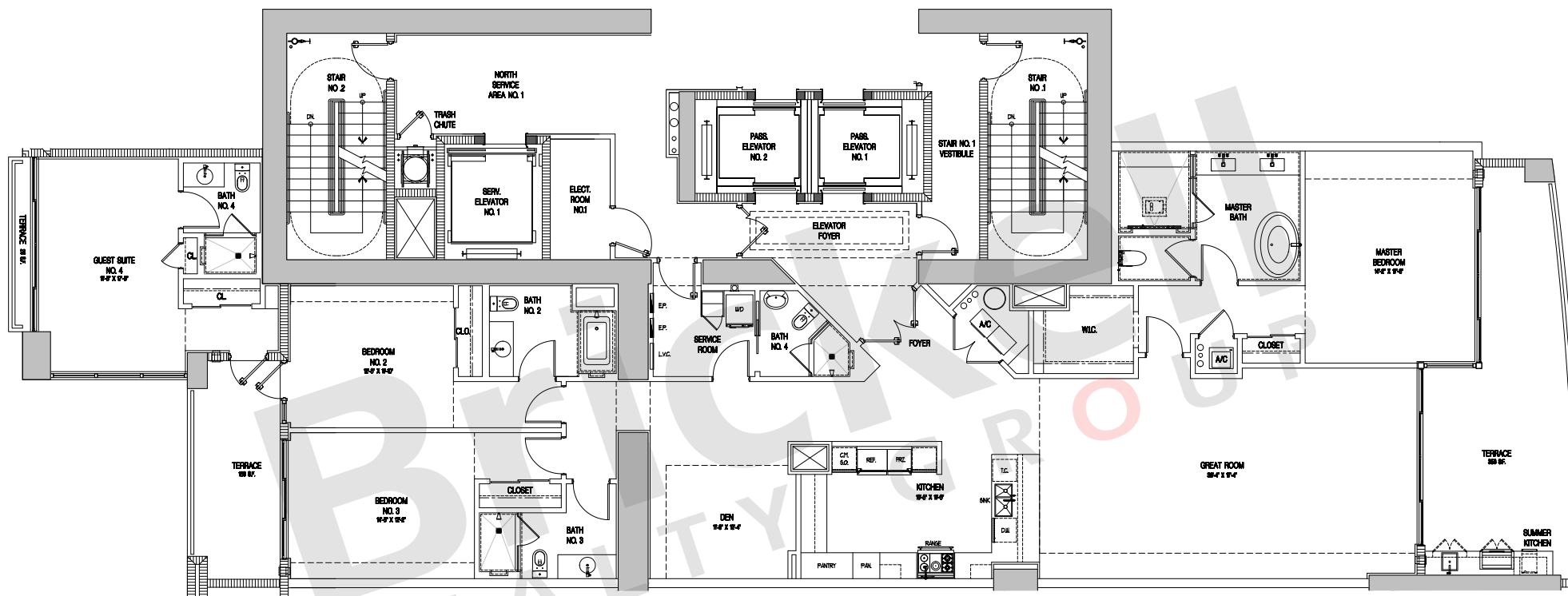
Stated dimensions are approximate and measured to the exterior boundaries of the exterior walls and the centerline of interior demising walls which in fact vary from the dimensions that would be determined by using the description and definition of the "Unit" set forth in the Declaration (which generally only includes the interior airspace between the perimeter walls and excludes interior structural components).



THE ESTATES AT ACQUALINA
The World's Finest Residences

**Line 02 - Vechio with
Optional Guest Suite**

4 Bedrooms · 5 Baths · Den
Great Room · Service Room
Terrace w/Summer Kitchen



| | SQ FT | M ² |
|--------------|--------------|----------------|
| Interior | 2,913 | 270.6 |
| Guest Suite | 374 | 34.7 |
| Terrace | 506 | 47.0 |
| Total | 3,793 | 352.3 |

Floors: 4 to 12 & 17 to 30



Brickell
REALTY GROUP

2071 NW 112th Avenue, Miami, FL 33172

www.brickell-realty.com/EstatesatAcqualina.html

Oral representation cannot be relied upon as correctly stating representations of the developer. Pictures of homes and condos may not reflect the final products which may vary. Dimensions, specifications, improvements, rendering, plans, land uses, materials, amenities, prices, and availability are subject to change at the developer's discretion without notice.

Stated dimensions are approximate and measured to the exterior boundaries of the exterior walls and the centerline of interior demising walls which in fact vary from the dimensions that would be determined by using the description and definition of the "Unit" set forth in the Declaration (which generally only includes the interior airspace between the perimeter walls and excludes interior structural components).



THE ESTATES AT ACQUALINA

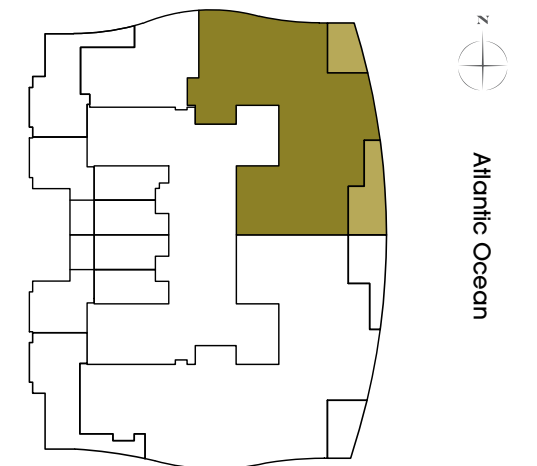
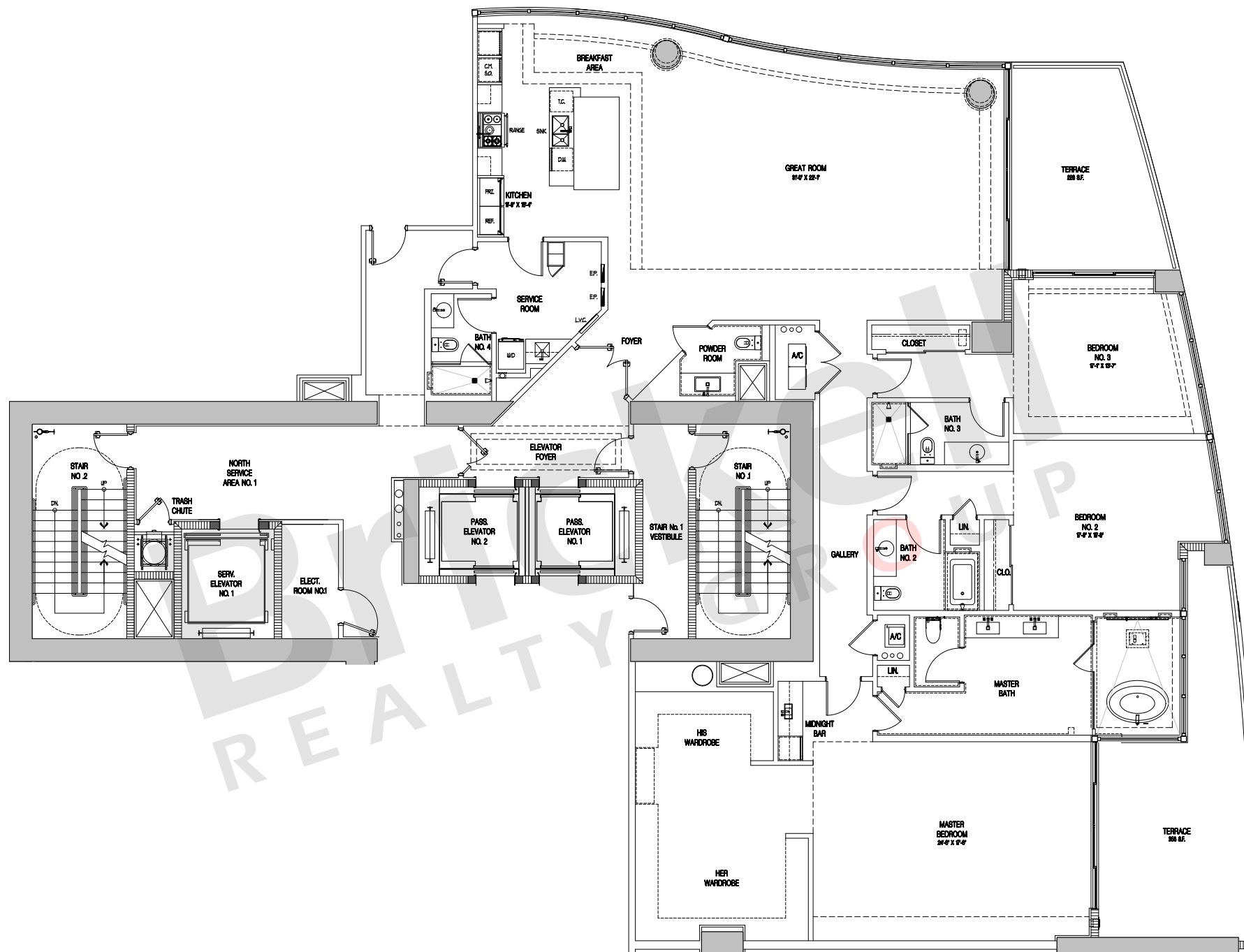
The World's Finest Residences

Villa de Este

3 Bedrooms · 4 Baths · Den
Great Room · Service Room
Terrace w/SPA & Summer Kitchen

| | SQ FT | M ² |
|--------------|--------------|----------------|
| Interior | 3,756 | 348.9 |
| Terrace | 552 | 51.3 |
| Total | 4,308 | 400.2 |

Floor: 3



Brickell

REALTY GROUP

2071 NW 112th Avenue, Miami, FL 33172

www.brickell-realty.com/EstatesatAcqualina.html

Oral representation cannot be relied upon as correctly stating representations of the developer. Pictures of homes and condos may not reflect the final products which may vary. Dimensions, specifications, improvements, rendering, plans, land uses, materials, amenities, prices, and availability are subject to change at the developer's discretion without notice.

Stated dimensions are approximate and measured to the exterior boundaries of the exterior walls and the centerline of interior demising walls which in fact vary from the dimensions that would be determined by using the description and definition of the "Unit" set forth in the Declaration (which generally only includes the interior airspace between the perimeter walls and excludes interior structural components).