

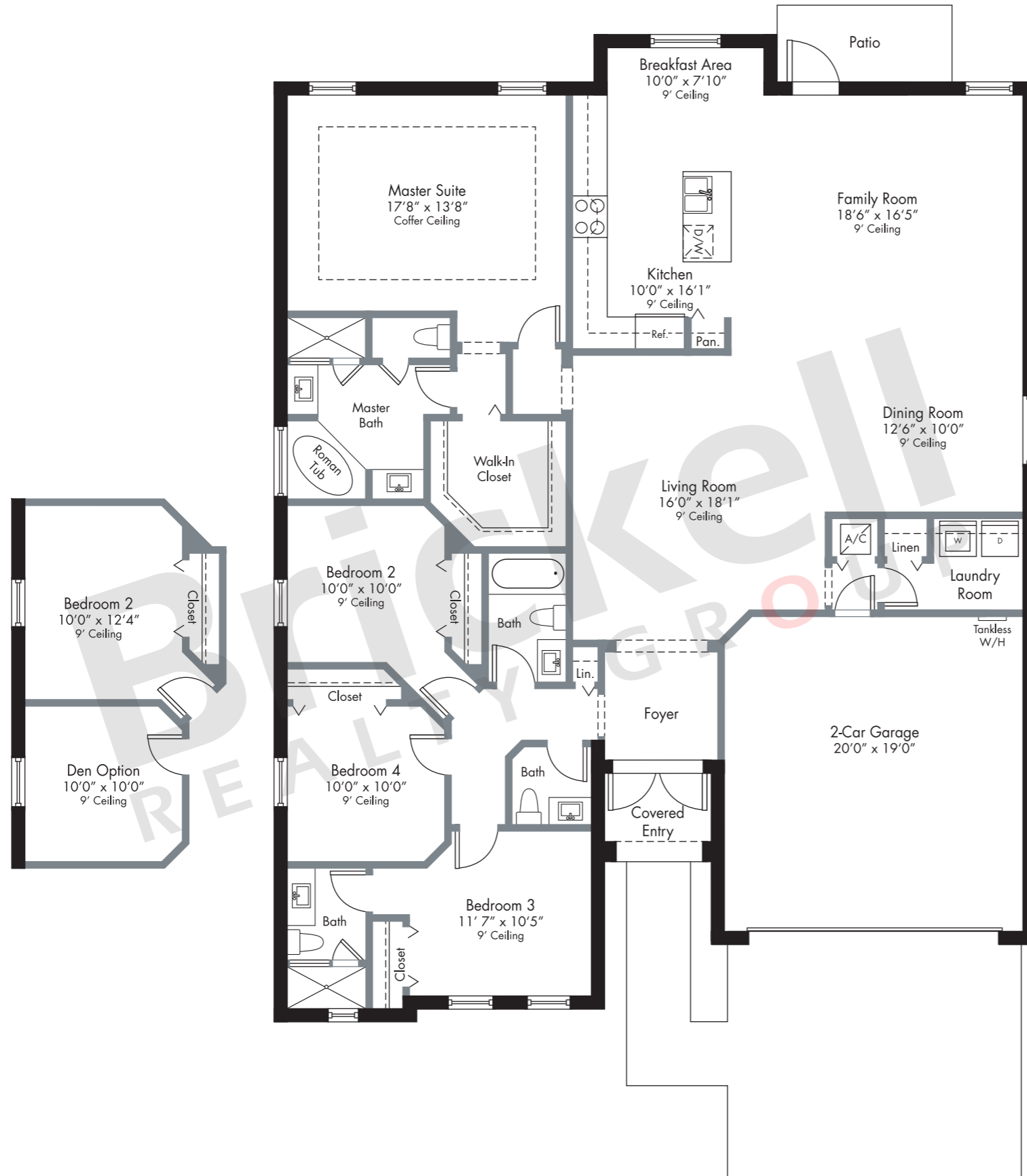
# LOS PRADOS

## Daisy

1-story

4 Bedrooms · 3.5 Baths  
Family Room · Breakfast Area  
2-Car Garage

	SQ FT	M <sup>2</sup>
A/C Area	2,244	208.5
Covered Entry	39	3.6
Garage	412	38.3
<b>Total</b>	<b>2,695</b>	<b>250.4</b>



## Brickell REALTY GROUP

2071 NW 112th Avenue, Miami, FL 33172

[www.brickell-realty.com/LosPrados.html](http://www.brickell-realty.com/LosPrados.html)

Oral representation cannot be relied upon as correctly stating representations of the developer. Pictures of homes and condos may not reflect the final products which may vary. Dimensions, specifications, improvements, rendering, plans, land uses, materials, amenities, prices, and availability are subject to change at the developer's discretion without notice.

Stated dimensions are approximate and measured to the exterior boundaries of the exterior walls and the centerline of interior demising walls which in fact vary from the dimensions that would be determined by using the description and definition of the "Unit" set forth in the Declaration (which generally only includes the interior airspace between the perimeter walls and excludes interior structural components).

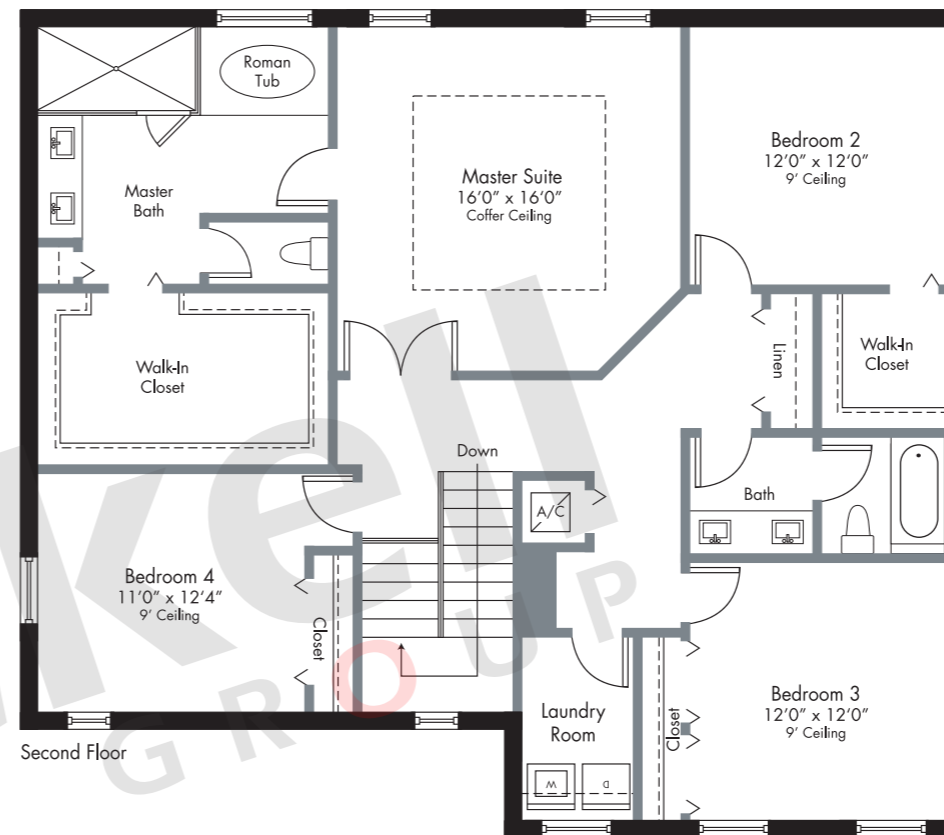
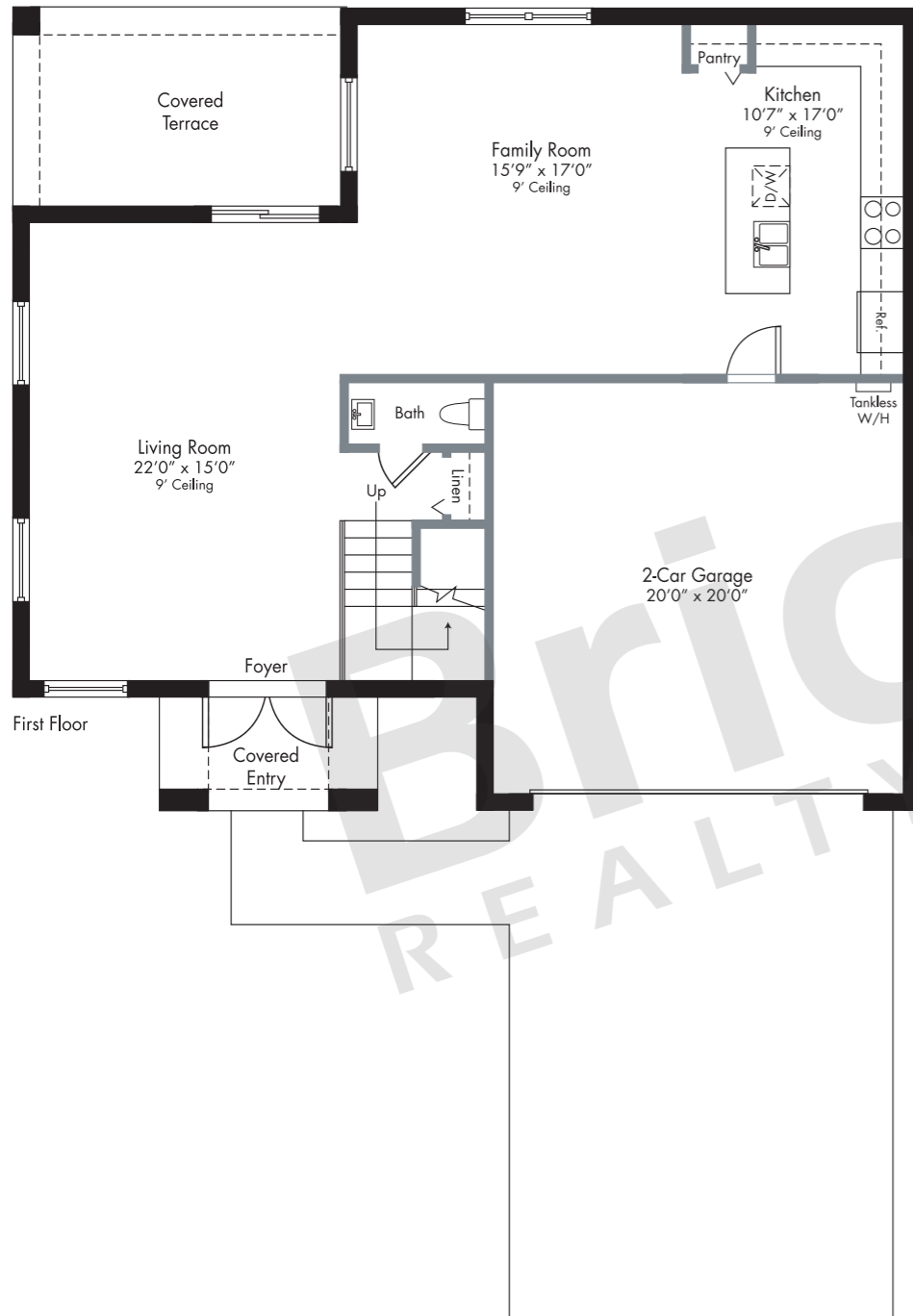
# LOS PRADOS

## Gardenia

2-story

4 Bedrooms · 2.5 Baths  
Family Room · Covered Terrace  
2-Car Garage

	SQ FT	M <sup>2</sup>
A/C Area	2,555	237.4
Covered Entry	54	5.0
Covered Terrace	153	14.2
Garage	450	41.8
<b>Total</b>	<b>3,212</b>	<b>298.4</b>



## Brickell REALTY GROUP

2071 NW 112th Avenue, Miami, FL 33172

[www.brickell-realty.com/LosPrados.html](http://www.brickell-realty.com/LosPrados.html)

Oral representation cannot be relied upon as correctly stating representations of the developer. Pictures of homes and condos may not reflect the final products which may vary. Dimensions, specifications, improvements, rendering, plans, land uses, materials, amenities, prices, and availability are subject to change at the developer's discretion without notice.

Stated dimensions are approximate and measured to the exterior boundaries of the exterior walls and the centerline of interior demising walls which in fact vary from the dimensions that would be determined by using the description and definition of the "Unit" set forth in the Declaration (which generally only includes the interior airspace between the perimeter walls and excludes interior structural components).

# LOS PRADOS

## Jasmine

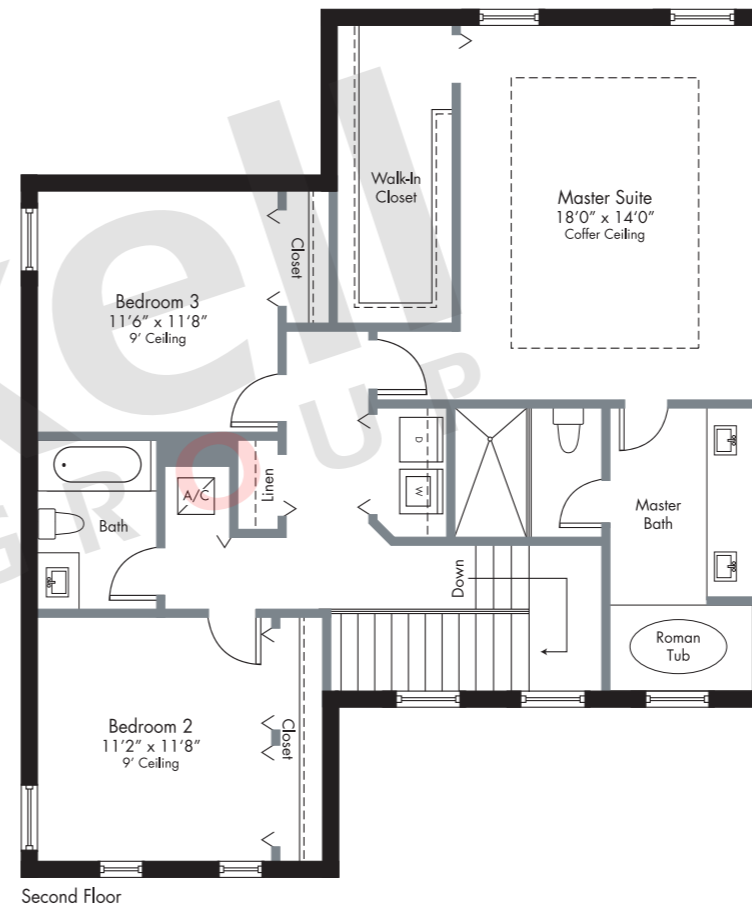
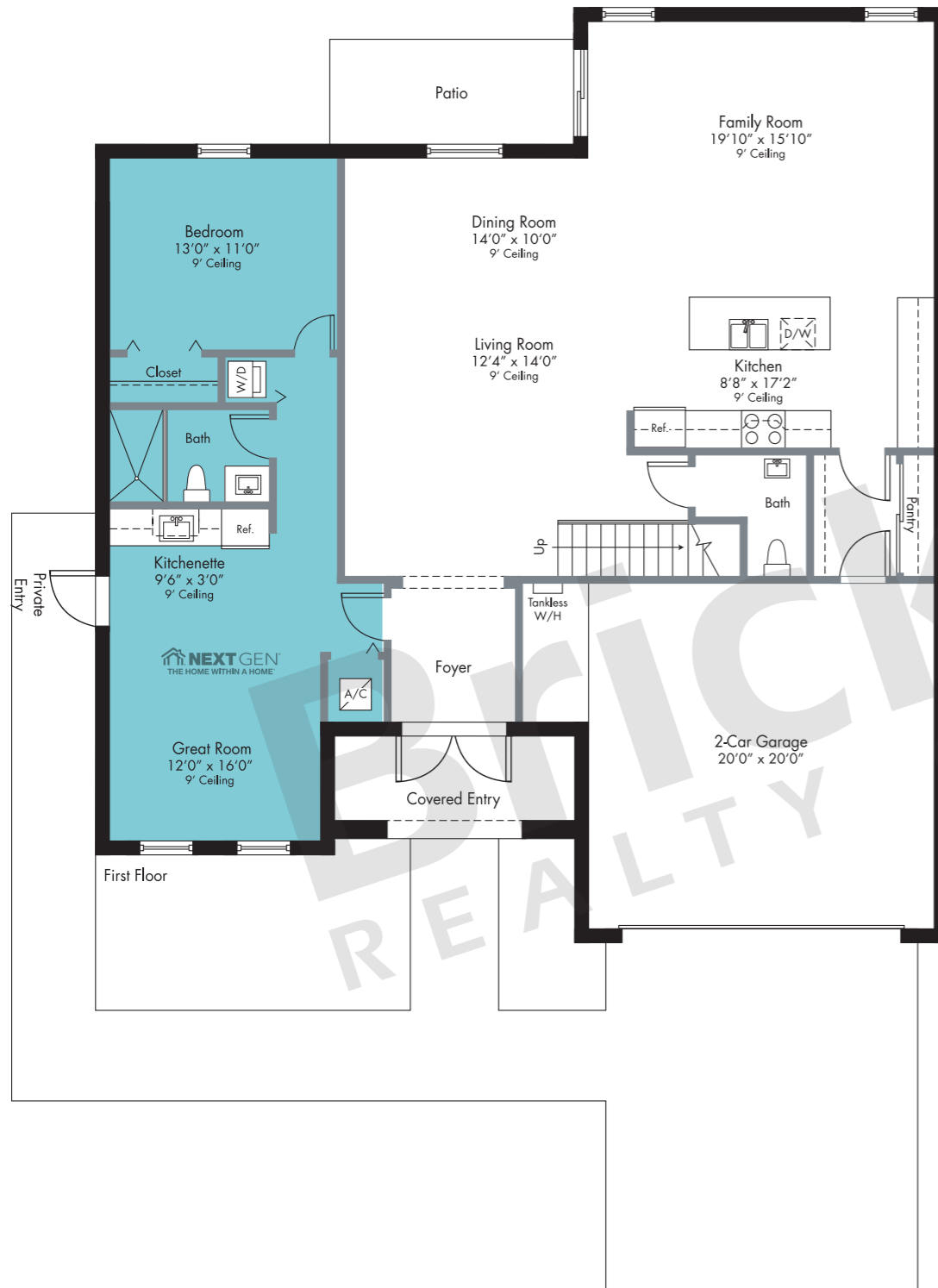
2-story

3 Bedrooms · 2.5 Baths  
Family Room · 2-Car Garage

NextGen Suite

Private Entry · Bedroom · Bath  
Great Room · Kitchenette

	SQ FT	M <sup>2</sup>
A/C Area	2,286	212.4
A/C Area NextGen	633	58.8
Covered Entry	83	7.7
Garage	465	43.2
<b>Total</b>	<b>3,467</b>	<b>322.1</b>



## Brickell REALTY GROUP

2071 NW 112th Avenue, Miami, FL 33172

[www.brickell-realty.com/LosPrados.html](http://www.brickell-realty.com/LosPrados.html)

Oral representation cannot be relied upon as correctly stating representations of the developer. Pictures of homes and condos may not reflect the final products which may vary. Dimensions, specifications, improvements, rendering, plans, land uses, materials, amenities, prices, and availability are subject to change at the developer's discretion without notice.

Stated dimensions are approximate and measured to the exterior boundaries of the exterior walls and the centerline of interior demising walls which in fact vary from the dimensions that would be determined by using the description and definition of the "Unit" set forth in the Declaration (which generally only includes the interior airspace between the perimeter walls and excludes interior structural components).

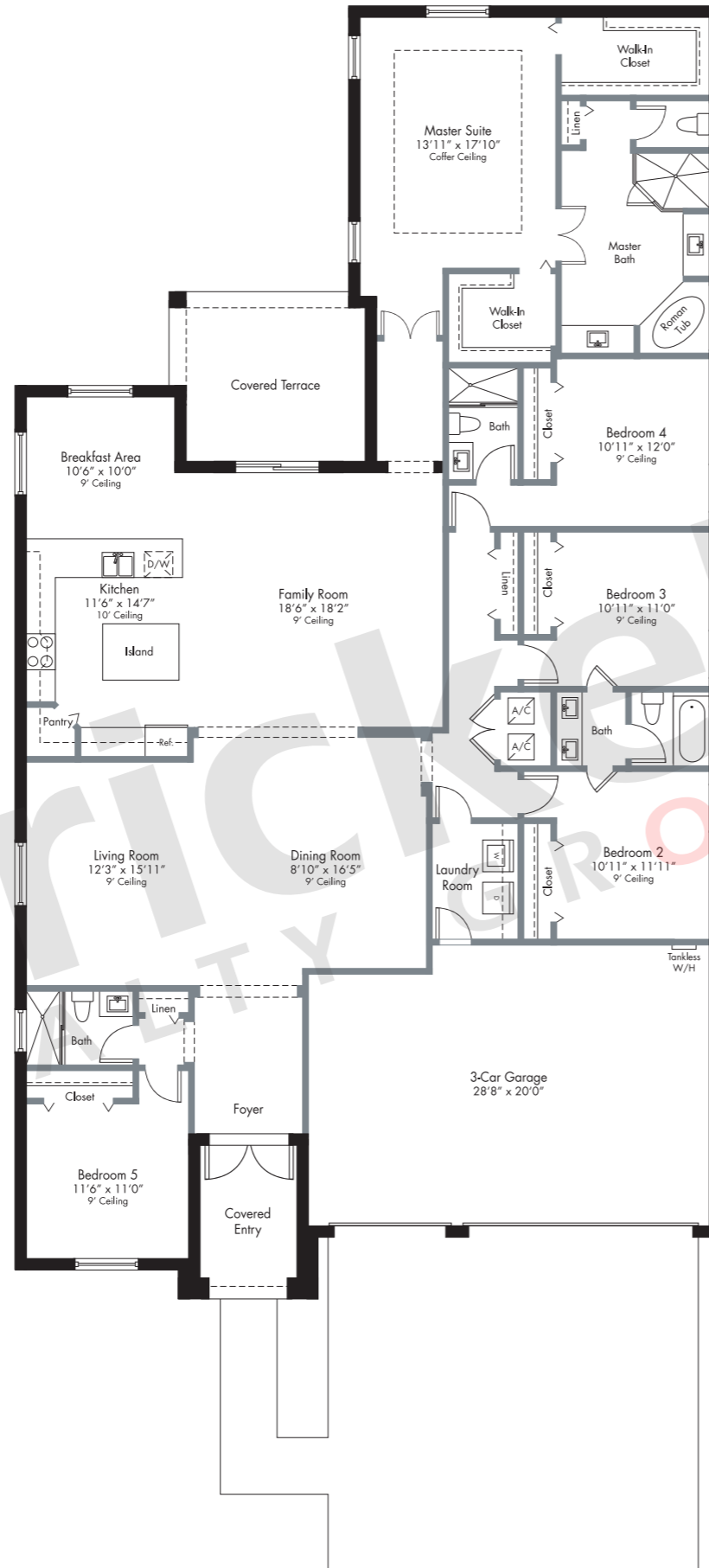
# LOS PRADOS

## Orchid

1-story

5 Bedrooms · 4 Baths  
Breakfast Area · Covered Terrace  
3-Car Garage

	SQ FT	M <sup>2</sup>
A/C Area	3,038	282.2
Covered Entry	89	8.3
Covered Terrace	159	14.8
Garage	588	54.6
<b>Total</b>	<b>3,874</b>	<b>359.9</b>



## Brickell REALTY GROUP

2071 NW 112th Avenue, Miami, FL 33172

[www.brickell-realty.com/LosPrados.html](http://www.brickell-realty.com/LosPrados.html)

Oral representation cannot be relied upon as correctly stating representations of the developer. Pictures of homes and condos may not reflect the final products which may vary. Dimensions, specifications, improvements, rendering, plans, land uses, materials, amenities, prices, and availability are subject to change at the developer's discretion without notice.

Stated dimensions are approximate and measured to the exterior boundaries of the exterior walls and the centerline of interior demising walls which in fact vary from the dimensions that would be determined by using the description and definition of the "Unit" set forth in the Declaration (which generally only includes the interior airspace between the perimeter walls and excludes interior structural components).

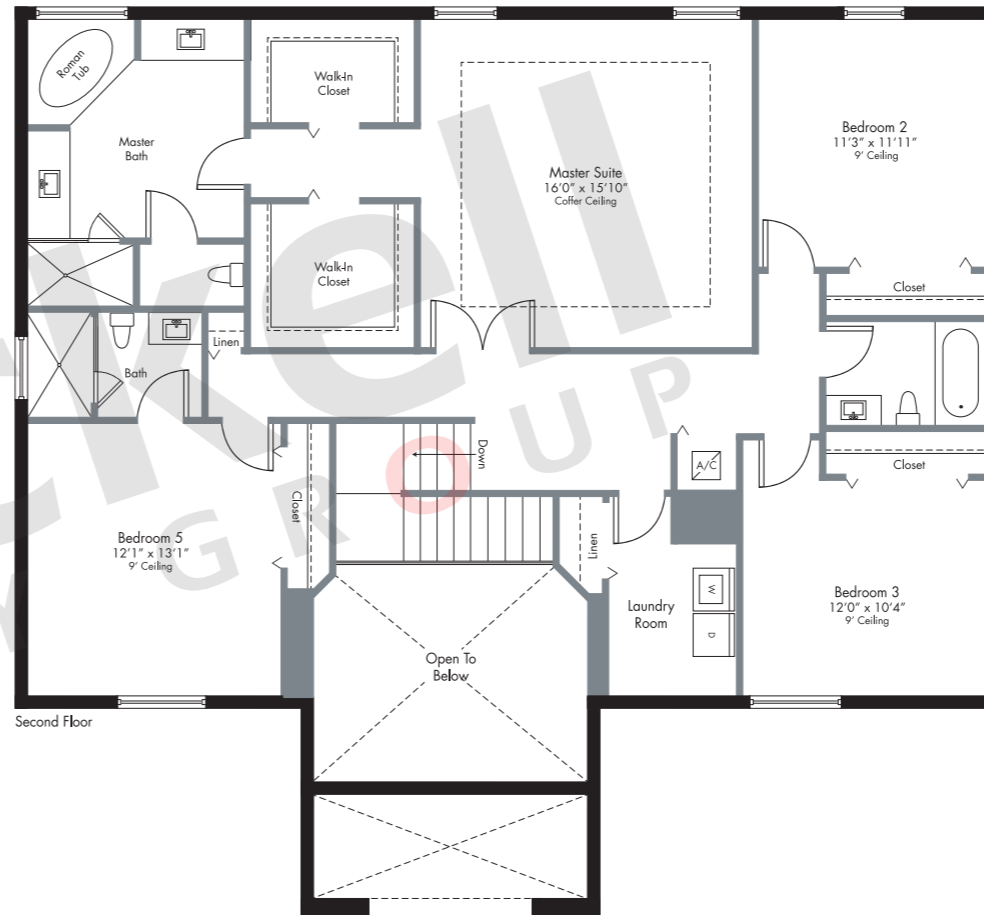
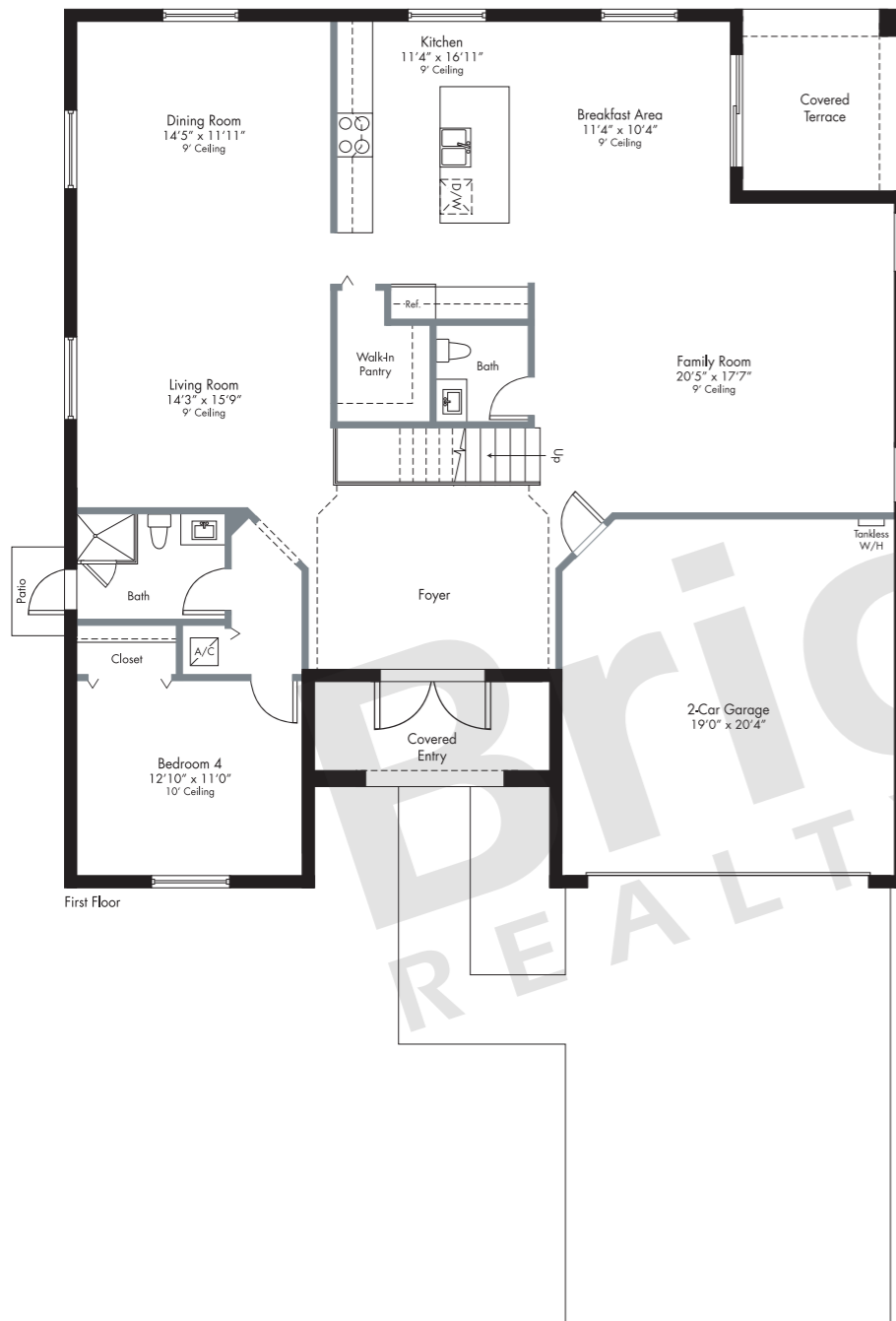
# LOS PRADOS

## Rose

2-story

5 Bedrooms · 4.5 Baths  
Breakfast Area · Family Room  
Covered Terrace · 2-Car Garage

	SQ FT	M <sup>2</sup>
A/C Area	3,277	304.4
Covered Entry	85	7.9
Covered Terrace	97	9.0
Garage	416	38.6
<b>Total</b>	<b>3,875</b>	<b>359.9</b>



## Brickell REALTY GROUP

2071 NW 112th Avenue, Miami, FL 33172

[www.brickell-realty.com/LosPrados.html](http://www.brickell-realty.com/LosPrados.html)

Oral representation cannot be relied upon as correctly stating representations of the developer. Pictures of homes and condos may not reflect the final products which may vary. Dimensions, specifications, improvements, rendering, plans, land uses, materials, amenities, prices, and availability are subject to change at the developer's discretion without notice.

Stated dimensions are approximate and measured to the exterior boundaries of the exterior walls and the centerline of interior demising walls which in fact vary from the dimensions that would be determined by using the description and definition of the "Unit" set forth in the Declaration (which generally only includes the interior airspace between the perimeter walls and excludes interior structural components).

# LOS PRADOS

## Sunflower

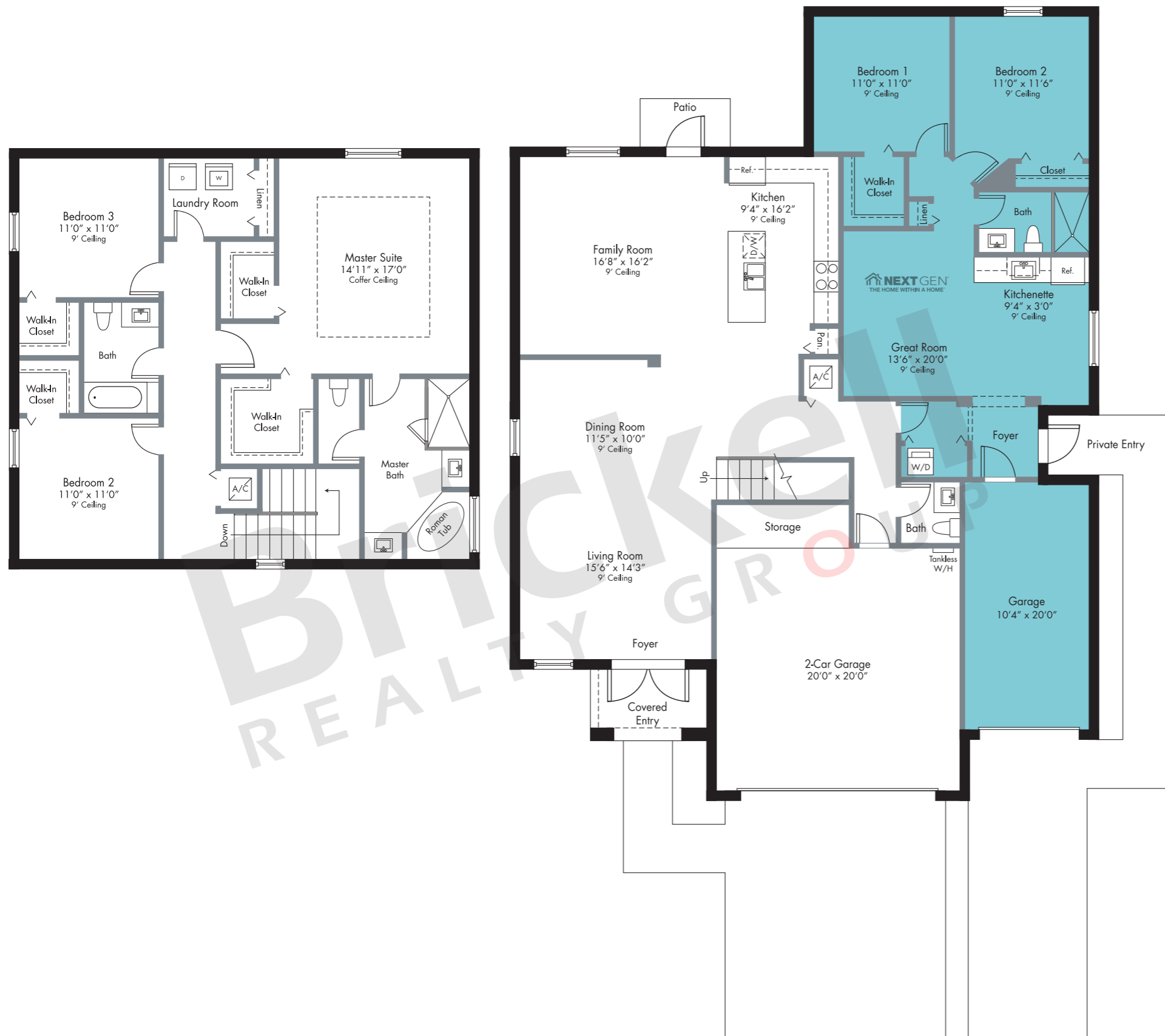
2-story

3 Bedrooms · 2.5 Baths  
Family Room · 2-Car Garage

NextGen Suite

Private Entry · 2 Bedrooms · Bath  
Great Room · Kitchenette · Garage

	SQ FT	M <sup>2</sup>
A/C Area	2,309	214.5
Covered Entry	57	5.3
2-Car Garage	462	42.9
A/C Area NextGen	796	73.9
Covered Entry NextGen	22	2.0
Garage NextGen	241	22.4
<b>Total</b>	<b>3,887</b>	<b>361.0</b>



## Brickell REALTY GROUP

2071 NW 112th Avenue, Miami, FL 33172

[www.brickell-realty.com/LosPrados.html](http://www.brickell-realty.com/LosPrados.html)

Oral representation cannot be relied upon as correctly stating representations of the developer. Pictures of homes and condos may not reflect the final products which may vary. Dimensions, specifications, improvements, rendering, plans, land uses, materials, amenities, prices, and availability are subject to change at the developer's discretion without notice.

Stated dimensions are approximate and measured to the exterior boundaries of the exterior walls and the centerline of interior demising walls which in fact vary from the dimensions that would be determined by using the description and definition of the "Unit" set forth in the Declaration (which generally only includes the interior airspace between the perimeter walls and excludes interior structural components).

# LOS PRADOS

## Violet

2-story

4 Bedrooms · 4 Baths  
 Family Room · Flex Room  
 Covered Terrace · 3-Car Garage

	SQ FT	M <sup>2</sup>
A/C Area	3,593	333.8
Covered Entry	103	9.6
Covered Terrace	200	18.6
Garage	574	53.3
<b>Total</b>	<b>4,470</b>	<b>415.3</b>



## Brickell REALTY GROUP

2071 NW 112th Avenue, Miami, FL 33172

[www.brickell-realty.com/LosPrados.html](http://www.brickell-realty.com/LosPrados.html)

Oral representation cannot be relied upon as correctly stating representations of the developer. Pictures of homes and condos may not reflect the final products which may vary. Dimensions, specifications, improvements, rendering, plans, land uses, materials, amenities, prices, and availability are subject to change at the developer's discretion without notice.

Stated dimensions are approximate and measured to the exterior boundaries of the exterior walls and the centerline of interior demising walls which in fact vary from the dimensions that would be determined by using the description and definition of the "Unit" set forth in the Declaration (which generally only includes the interior airspace between the perimeter walls and excludes interior structural components).

