



RESIDENCES BY

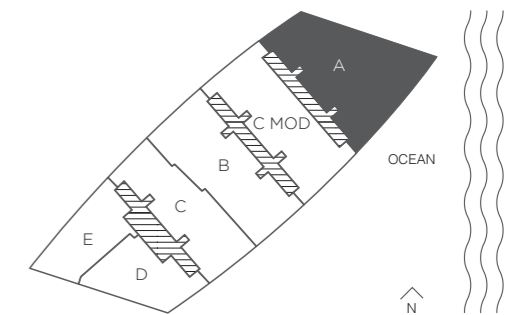
**ARMANI/CASA**

## RESIDENCE A

Typical Floor Plan - Level 3

4 Bedrooms · 5.5 Baths · Service

	SQ FT	M <sup>2</sup>
Interior	3,640	338.2
Terrace	1,358	126.2
<b>Total</b>	<b>4,998</b>	<b>464.4</b>



**Brickell**  
REALTY GROUP

2071 NW 112th Avenue, Miami, FL 33172

[www.brickell-realty.com/Armani.html](http://www.brickell-realty.com/Armani.html)

Oral representation cannot be relied upon as correctly stating representations of the developer. Renderings of residences may not reflect the final products. Dimensions, specifications, improvements, rendering, plans, land uses, materials, amenities, prices, and availability are subject to change at the developer's discretion without notice.

Stated dimensions are approximate and measured to the exterior boundaries of the exterior walls and the centerline of interior demising walls which in fact vary from the dimensions that would be determined by using the description and definition of the "Unit" set forth in the Declaration which generally only includes the interior airspace between the perimeter walls (measuring from interior wall plane to interior wall plane) and excludes interior structural components.

For your reference, the square footage area of the Unit, determined in accordance with those Unit boundaries as defined in the Declaration. Note that measurements of rooms set forth on this floor plan are generally taken at the greatest points of each given room (as if the room were a perfect rectangle), without regard for any cutouts. Accordingly, the area of the actual room will typically be smaller than the product obtained by multiplying the stated length times width.



RESIDENCES BY

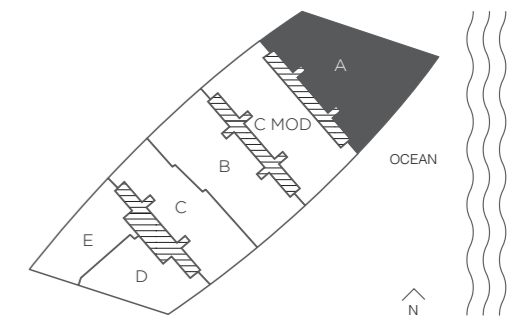
ARMANI / CASA

### RESIDENCE A

Typical Floor Plan - Level 28

4 Bedrooms · 5.5 Baths · Service

	SQ FT	M <sup>2</sup>
Interior	3,880	360.5
Terrace	1,450	134.7
<b>Total</b>	<b>5,330</b>	<b>495.2</b>



# Brickell

REALTY GROUP

2071 NW 112th Avenue, Miami, FL 33172

[www.brickell-realty.com/Armani.html](http://www.brickell-realty.com/Armani.html)

Oral representation cannot be relied upon as correctly stating representations of the developer. Renderings of residences may not reflect the final products. Dimensions, specifications, improvements, rendering, plans, land uses, materials, amenities, prices, and availability are subject to change at the developer's discretion without notice.

Stated dimensions are approximate and measured to the exterior boundaries of the exterior walls and the centerline of interior demising walls which in fact vary from the dimensions that would be determined by using the description and definition of the "Unit" set forth in the Declaration which generally only includes the interior airspace between the perimeter walls (measuring from interior wall plane to interior wall plane) and excludes interior structural components.

For your reference, the square footage area of the Unit, determined in accordance with those Unit boundaries as defined in the Declaration. Note that measurements of rooms set forth on this floor plan are generally taken at the greatest points of each given room (as if the room were a perfect rectangle), without regard for any cutouts. Accordingly, the area of the actual room will typically be smaller than the product obtained by multiplying the stated length times width.



RESIDENCES BY

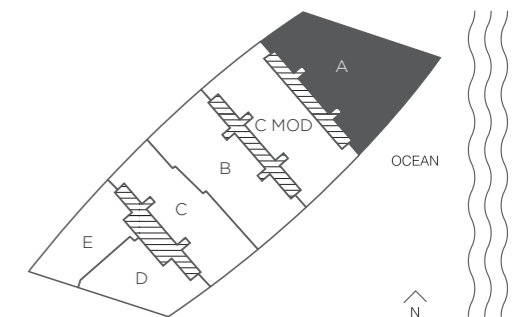
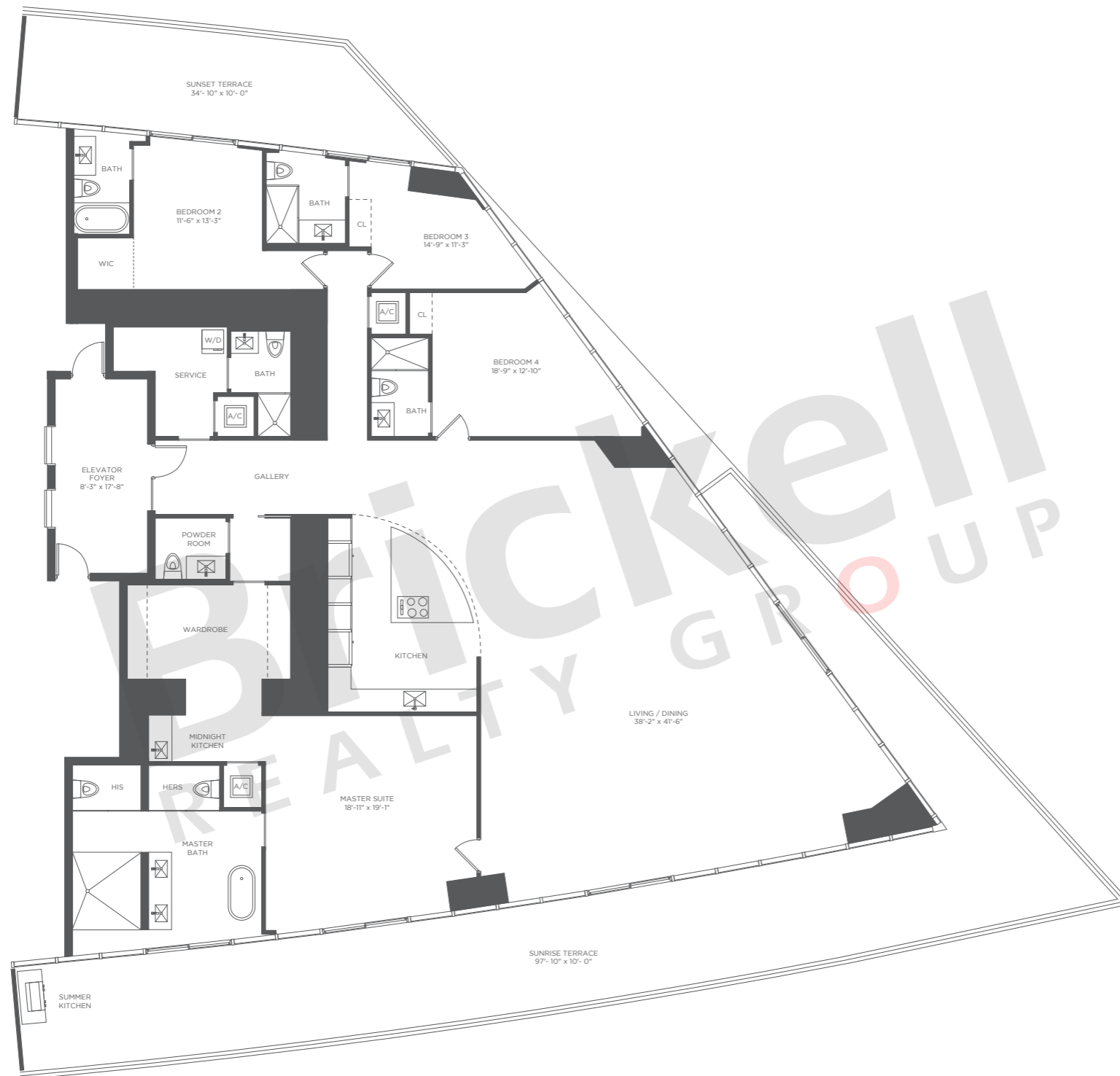
**ARMANI/CASA**

## RESIDENCE A

Typical Floor Plan - Level 53

4 Bedrooms · 5.5 Baths · Service

	SQ FT	M <sup>2</sup>
Interior	4,150	385.5
Terrace	1,560	144.9
<b>Total</b>	<b>5,710</b>	<b>530.4</b>



# Brickell

REALTY GROUP

2071 NW 112th Avenue, Miami, FL 33172

[www.brickell-realty.com/Armani.html](http://www.brickell-realty.com/Armani.html)

Oral representation cannot be relied upon as correctly stating representations of the developer. Renderings of residences may not reflect the final products. Dimensions, specifications, improvements, rendering, plans, land uses, materials, amenities, prices, and availability are subject to change at the developer's discretion without notice.

Stated dimensions are approximate and measured to the exterior boundaries of the exterior walls and the centerline of interior demising walls which in fact vary from the dimensions that would be determined by using the description and definition of the "Unit" set forth in the Declaration which generally only includes the interior airspace between the perimeter walls (measuring from interior wall plane to interior wall plane) and excludes interior structural components.

For your reference, the square footage area of the Unit, determined in accordance with those Unit boundaries as defined in the Declaration. Note that measurements of rooms set forth on this floor plan are generally taken at the greatest points of each given room (as if the room were a perfect rectangle), without regard for any cutouts. Accordingly, the area of the actual room will typically be smaller than the product obtained by multiplying the stated length times width.



RESIDENCES BY

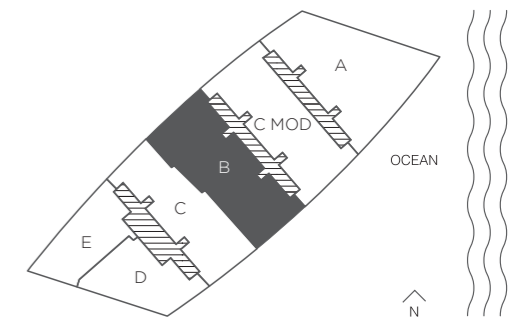
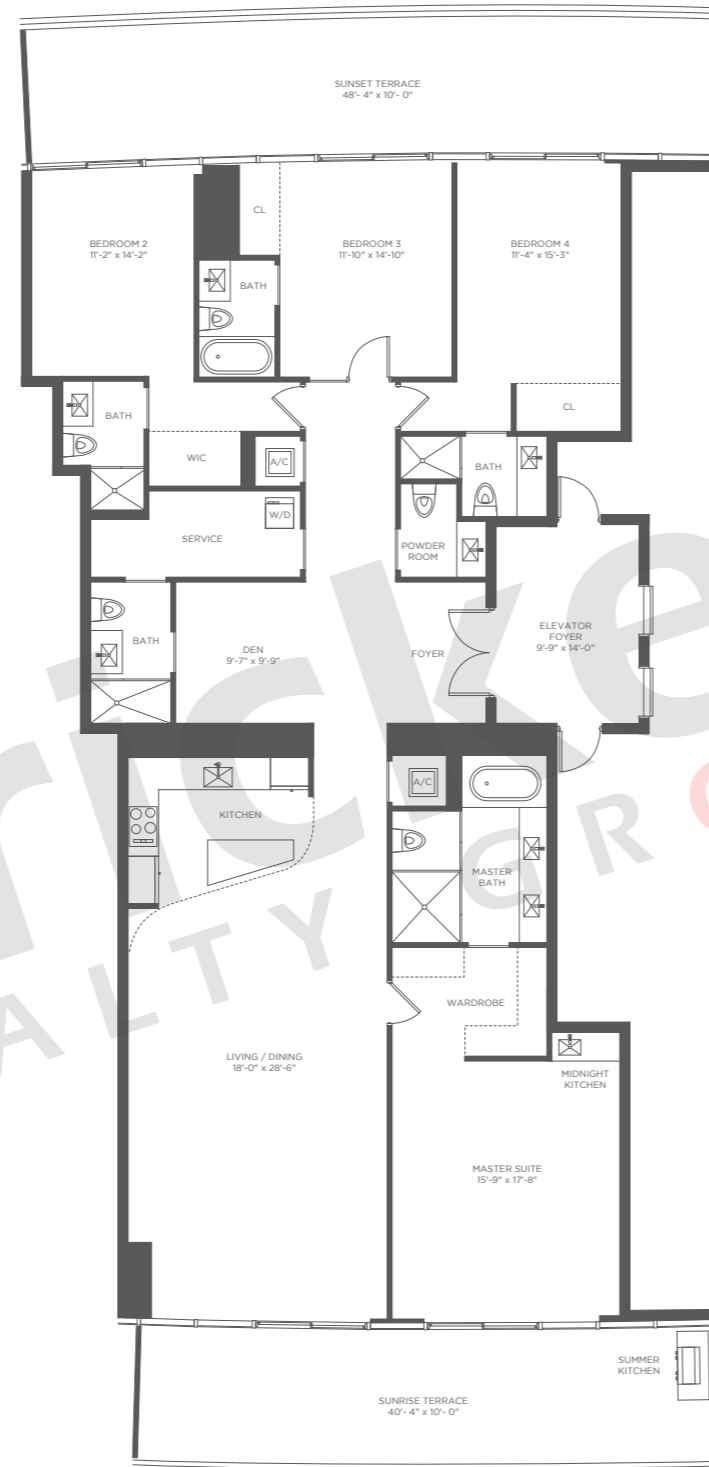
**ARMANI / CASA**

**RESIDENCE B**

Typical Floor Plan - Level 28

4 Bedrooms · 5.5 Baths · Den  
Service

	SQ FT	M <sup>2</sup>
Interior	3,176	295.1
Terrace	886	82.3
<b>Total</b>	<b>4,062</b>	<b>377.4</b>



**Brickell**  
REALTY GROUP

2071 NW 112th Avenue, Miami, FL 33172

[www.brickell-realty.com/Armani.html](http://www.brickell-realty.com/Armani.html)

Oral representation cannot be relied upon as correctly stating representations of the developer. Renderings of residences may not reflect the final products. Dimensions, specifications, improvements, rendering, plans, land uses, materials, amenities, prices, and availability are subject to change at the developer's discretion without notice.

Stated dimensions are approximate and measured to the exterior boundaries of the exterior walls and the centerline of interior demising walls which in fact vary from the dimensions that would be determined by using the description and definition of the "Unit" set forth in the Declaration which generally only includes the interior airspace between the perimeter walls (measuring from interior wall plane to interior wall plane) and excludes interior structural components.

For your reference, the square footage area of the Unit, determined in accordance with those Unit boundaries as defined in the Declaration. Note that measurements of rooms set forth on this floor plan are generally taken at the greatest points of each given room (as if the room were a perfect rectangle), without regard for any cutouts. Accordingly, the area of the actual room will typically be smaller than the product obtained by multiplying the stated length times width.



RESIDENCES BY

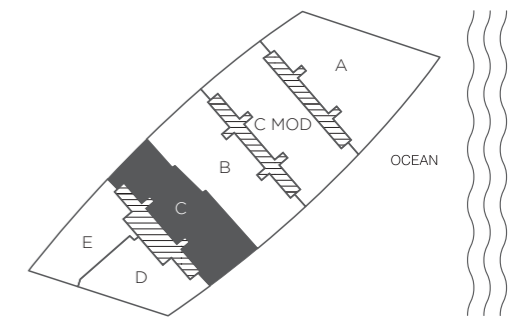
**ARMANI / CASA**

**RESIDENCE C**

Typical Floor Plan - Level 28

3 Bedroom · 3.5 Baths · Den

	SQ FT	M <sup>2</sup>
Interior	2,716	252.3
Terrace	765	71.1
<b>Total</b>	<b>3,481</b>	<b>323.4</b>



**Brickell**  
REALTY GROUP

2071 NW 112th Avenue, Miami, FL 33172

[www.brickell-realty.com/Armani.html](http://www.brickell-realty.com/Armani.html)

Oral representation cannot be relied upon as correctly stating representations of the developer. Renderings of residences may not reflect the final products. Dimensions, specifications, improvements, rendering, plans, land uses, materials, amenities, prices, and availability are subject to change at the developer's discretion without notice.

Stated dimensions are approximate and measured to the exterior boundaries of the exterior walls and the centerline of interior demising walls which in fact vary from the dimensions that would be determined by using the description and definition of the "Unit" set forth in the Declaration which generally only includes the interior airspace between the perimeter walls (measuring from interior wall plane to interior wall plane) and excludes interior structural components.

For your reference, the square footage area of the Unit, determined in accordance with those Unit boundaries as defined in the Declaration. Note that measurements of rooms set forth on this floor plan are generally taken at the greatest points of each given room (as if the room were a perfect rectangle), without regard for any cutouts. Accordingly, the area of the actual room will typically be smaller than the product obtained by multiplying the stated length times width.



RESIDENCES BY

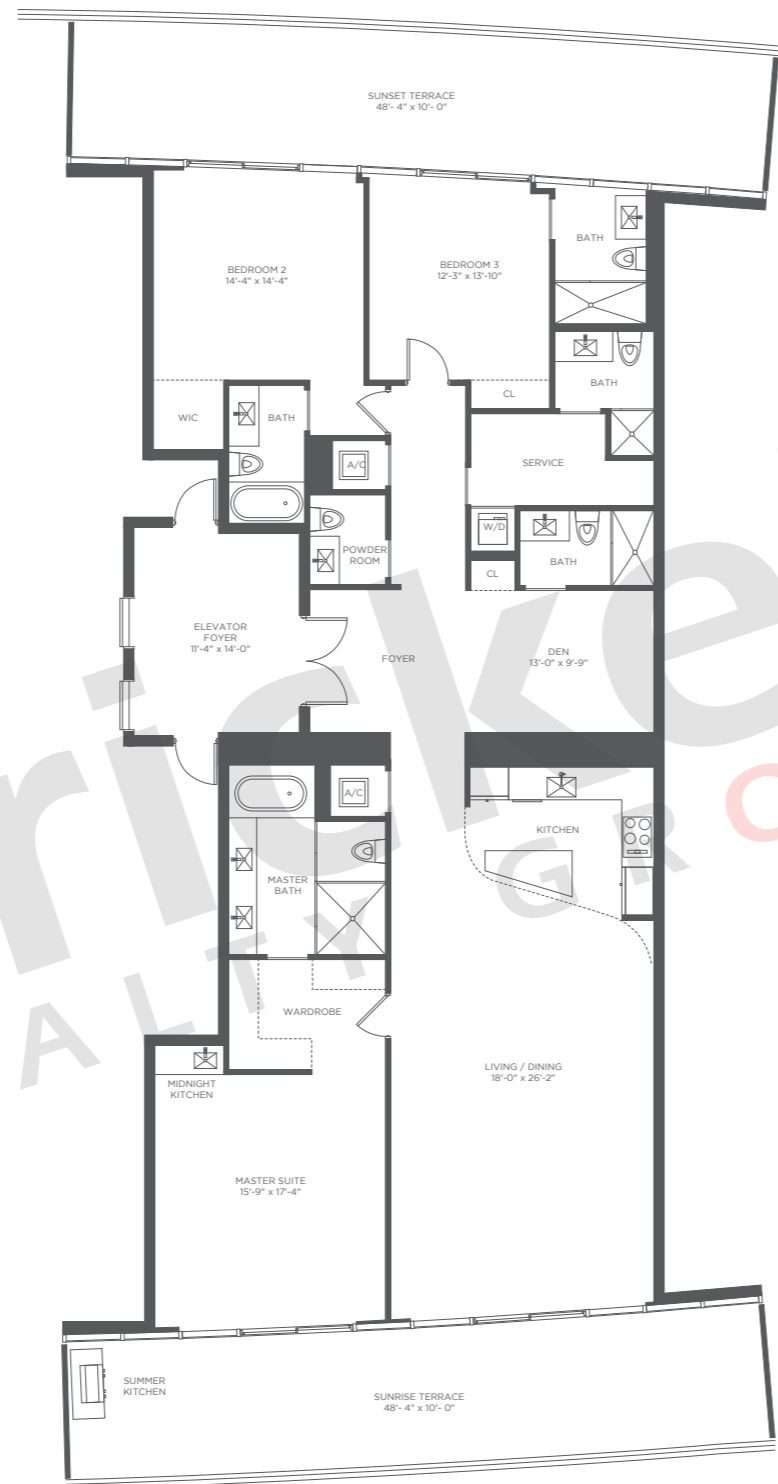
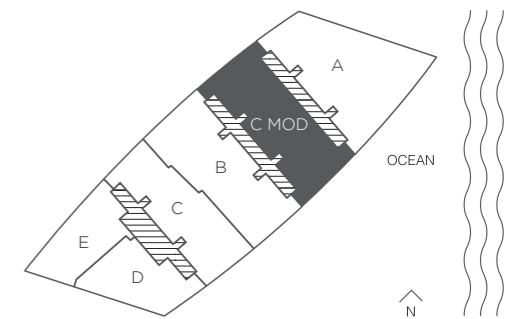
**ARMANI / CASA**

**RESIDENCE C MOD**

Typical Floor Plan - Level 28

3 Bedroom · 3.5 Baths · Den  
Service

	SQ FT	M <sup>2</sup>
Interior	3,050	283.3
Terrace	967	89.8
<b>Total</b>	<b>4,017</b>	<b>373.1</b>



Brickell REALTY GROUP

**Brickell**  
REALTY GROUP

2071 NW 112th Avenue, Miami, FL 33172

[www.brickell-realty.com/Armani.html](http://www.brickell-realty.com/Armani.html)

Oral representation cannot be relied upon as correctly stating representations of the developer. Renderings of residences may not reflect the final products. Dimensions, specifications, improvements, rendering, plans, land uses, materials, amenities, prices, and availability are subject to change at the developer's discretion without notice.

Stated dimensions are approximate and measured to the exterior boundaries of the exterior walls and the centerline of interior demising walls which in fact vary from the dimensions that would be determined by using the description and definition of the "Unit" set forth in the Declaration which generally only includes the interior airspace between the perimeter walls (measuring from interior wall plane to interior wall plane) and excludes interior structural components.

For your reference, the square footage area of the Unit, determined in accordance with those Unit boundaries as defined in the Declaration. Note that measurements of rooms set forth on this floor plan are generally taken at the greatest points of each given room (as if the room were a perfect rectangle), without regard for any cutouts. Accordingly, the area of the actual room will typically be smaller than the product obtained by multiplying the stated length times width.



RESIDENCES BY

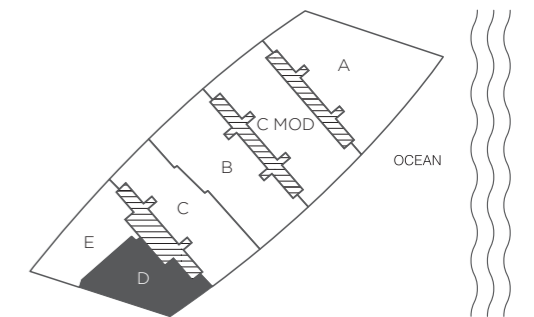
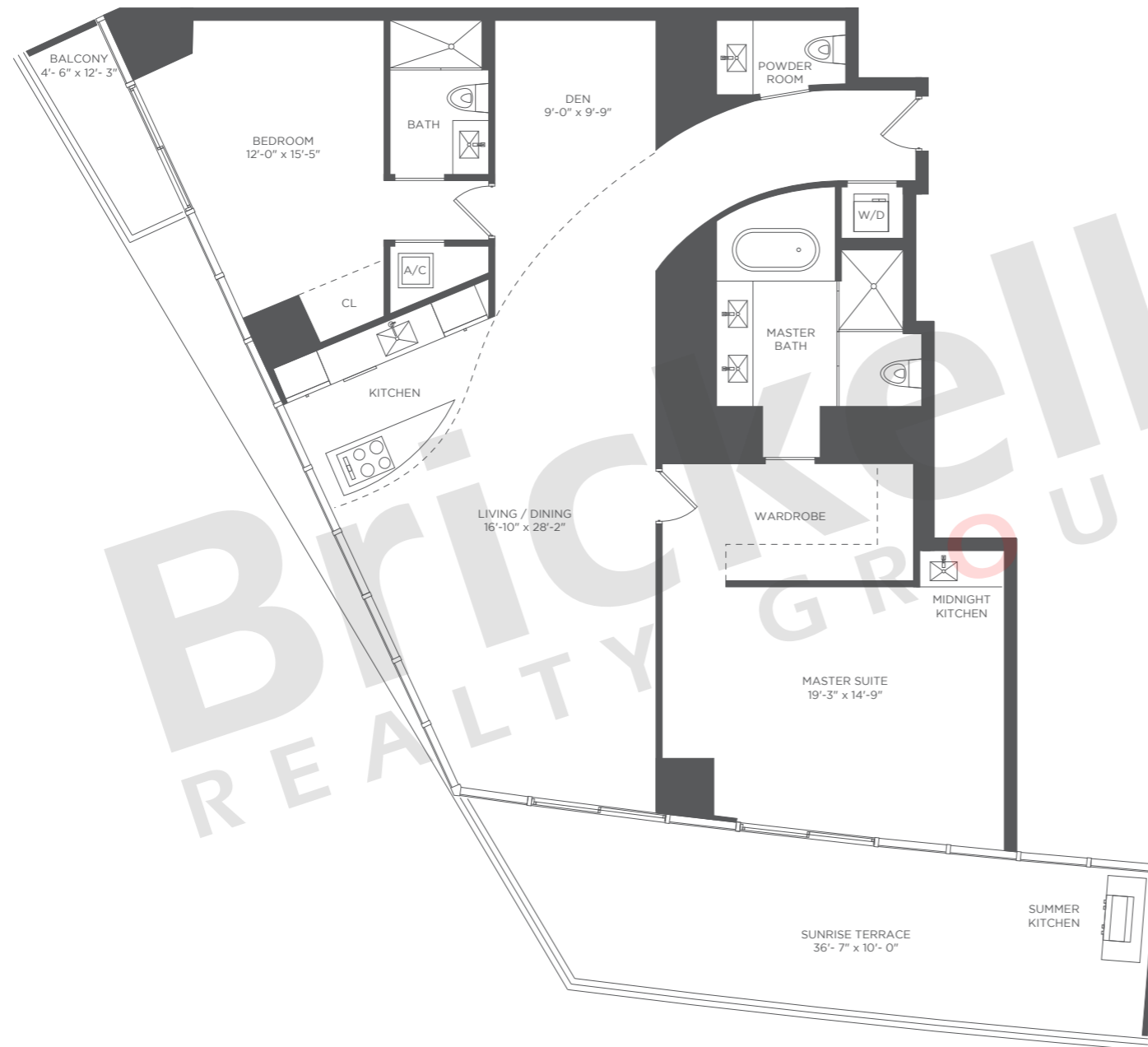
ARMANI/CASA

### RESIDENCE D

Typical Floor Plan - Level 3

2 Bedrooms · 2.5 Baths · Den

	SQ FT	M <sup>2</sup>
Interior	1,796	166.8
Terrace	420	39.0
<b>Total</b>	<b>2,216</b>	<b>205.8</b>



# Brickell REALTY GROUP

2071 NW 112th Avenue, Miami, FL 33172

[www.brickell-realty.com/Armani.html](http://www.brickell-realty.com/Armani.html)

Oral representation cannot be relied upon as correctly stating representations of the developer. Renderings of residences may not reflect the final products. Dimensions, specifications, improvements, rendering, plans, land uses, materials, amenities, prices, and availability are subject to change at the developer's discretion without notice.

Stated dimensions are approximate and measured to the exterior boundaries of the exterior walls and the centerline of interior demising walls which in fact vary from the dimensions that would be determined by using the description and definition of the "Unit" set forth in the Declaration which generally only includes the interior airspace between the perimeter walls (measuring from interior wall plane to interior wall plane) and excludes interior structural components.

For your reference, the square footage area of the Unit, determined in accordance with those Unit boundaries as defined in the Declaration. Note that measurements of rooms set forth on this floor plan are generally taken at the greatest points of each given room (as if the room were a perfect rectangle), without regard for any cutouts. Accordingly, the area of the actual room will typically be smaller than the product obtained by multiplying the stated length times width.



RESIDENCES BY

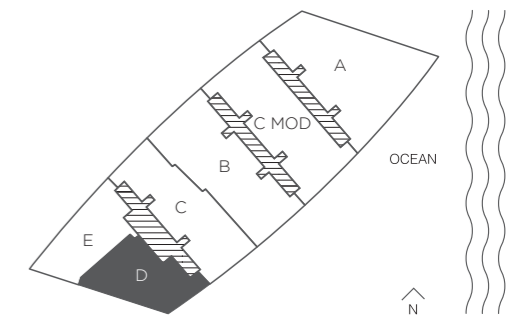
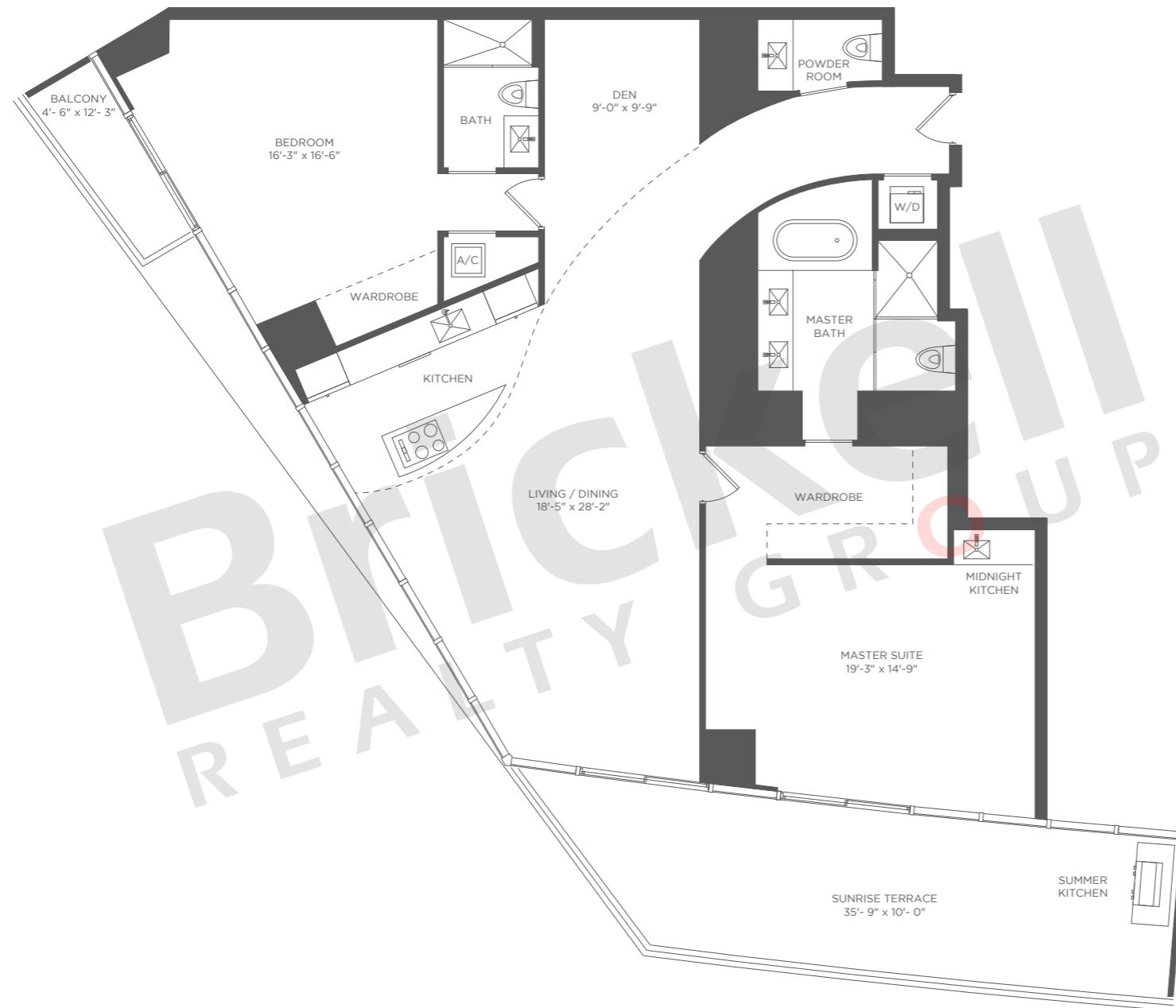
**ARMANI / CASA**

### RESIDENCE D

Typical Floor Plan - Level 28

2 Bedrooms · 2.5 Baths · Den

	SQ FT	M <sup>2</sup>
Interior	1,920	178.4
Terrace	411	38.2
<b>Total</b>	<b>2,331</b>	<b>216.6</b>



# Brickell

REALTY GROUP

2071 NW 112th Avenue, Miami, FL 33172

[www.brickell-realty.com/Armani.html](http://www.brickell-realty.com/Armani.html)

Oral representation cannot be relied upon as correctly stating representations of the developer. Renderings of residences may not reflect the final products. Dimensions, specifications, improvements, rendering, plans, land uses, materials, amenities, prices, and availability are subject to change at the developer's discretion without notice.

Stated dimensions are approximate and measured to the exterior boundaries of the exterior walls and the centerline of interior demising walls which in fact vary from the dimensions that would be determined by using the description and definition of the "Unit" set forth in the Declaration which generally only includes the interior airspace between the perimeter walls (measuring from interior wall plane to interior wall plane) and excludes interior structural components.

For your reference, the square footage area of the Unit, determined in accordance with those Unit boundaries as defined in the Declaration. Note that measurements of rooms set forth on this floor plan are generally taken at the greatest points of each given room (as if the room were a perfect rectangle), without regard for any cutouts. Accordingly, the area of the actual room will typically be smaller than the product obtained by multiplying the stated length times width.





RESIDENCES BY

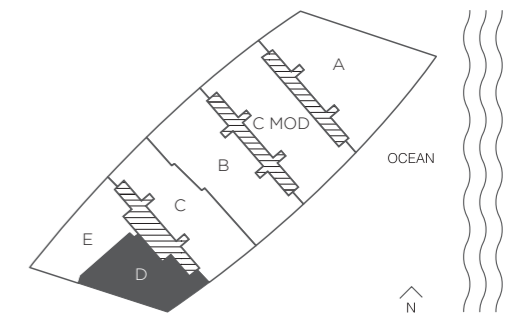
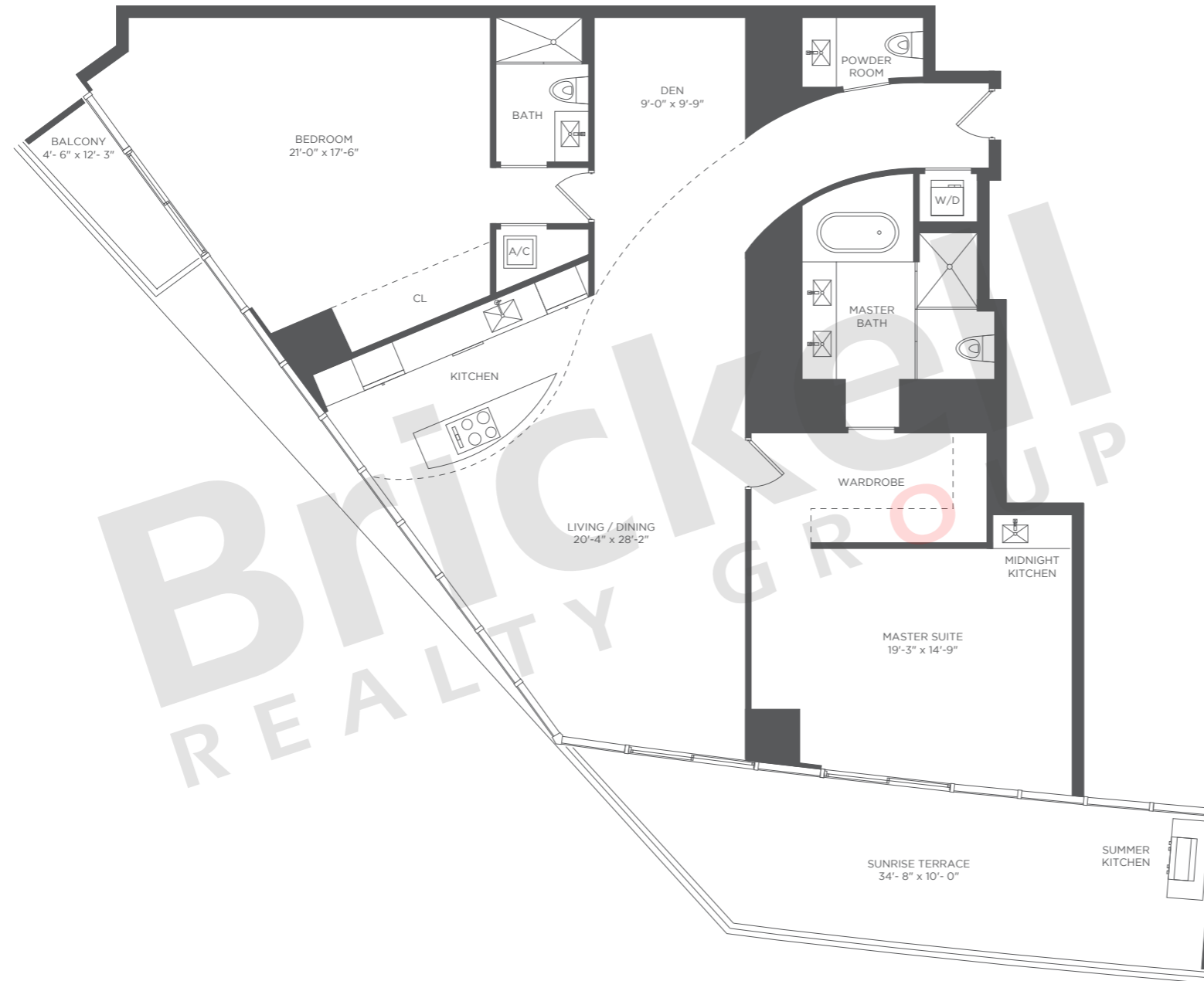
**ARMANI / CASA**

**RESIDENCE D**

Typical Floor Plan - Level 53

2 Bedrooms · 2.5 Baths · Den

	SQ FT	M <sup>2</sup>
Interior	2,065	191.8
Terrace	400	37.2
<b>Total</b>	<b>2,465</b>	<b>229.0</b>



**Brickell**  
REALTY GROUP

2071 NW 112th Avenue, Miami, FL 33172

[www.brickell-realty.com/Armani.html](http://www.brickell-realty.com/Armani.html)

Oral representation cannot be relied upon as correctly stating representations of the developer. Renderings of residences may not reflect the final products. Dimensions, specifications, improvements, rendering, plans, land uses, materials, amenities, prices, and availability are subject to change at the developer's discretion without notice.

Stated dimensions are approximate and measured to the exterior boundaries of the exterior walls and the centerline of interior demising walls which in fact vary from the dimensions that would be determined by using the description and definition of the "Unit" set forth in the Declaration which generally only includes the interior airspace between the perimeter walls (measuring from interior wall plane to interior wall plane) and excludes interior structural components.

For your reference, the square footage area of the Unit, determined in accordance with those Unit boundaries as defined in the Declaration. Note that measurements of rooms set forth on this floor plan are generally taken at the greatest points of each given room (as if the room were a perfect rectangle), without regard for any cutouts. Accordingly, the area of the actual room will typically be smaller than the product obtained by multiplying the stated length times width.



RESIDENCES BY

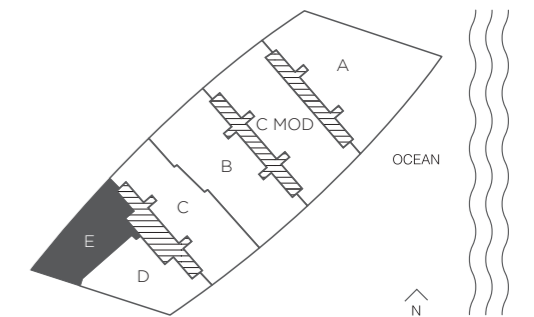
ARMANI/CASA

### RESIDENCE E

Typical Floor Plan - Level 3

2 Bedrooms · 2 Baths

	SQ FT	M <sup>2</sup>
Interior	1,326	123.2
Terrace	895	83.1
<b>Total</b>	<b>2,221</b>	<b>206.3</b>



# Brickell

REALTY GROUP

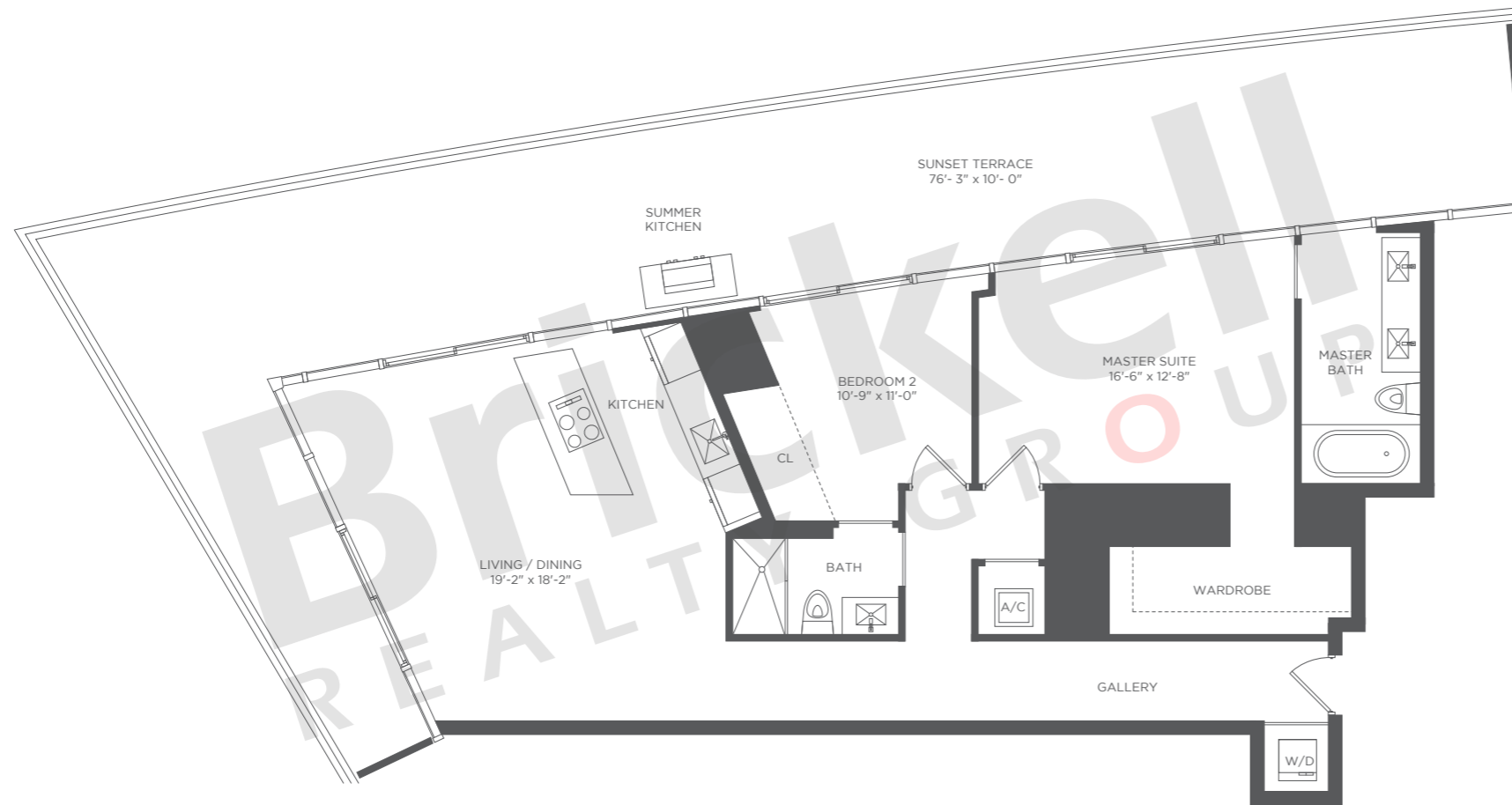
2071 NW 112th Avenue, Miami, FL 33172

[www.brickell-realty.com/Armani.html](http://www.brickell-realty.com/Armani.html)

Oral representation cannot be relied upon as correctly stating representations of the developer. Renderings of residences may not reflect the final products. Dimensions, specifications, improvements, rendering, plans, land uses, materials, amenities, prices, and availability are subject to change at the developer's discretion without notice.

Stated dimensions are approximate and measured to the exterior boundaries of the exterior walls and the centerline of interior demising walls which in fact vary from the dimensions that would be determined by using the description and definition of the "Unit" set forth in the Declaration which generally only includes the interior airspace between the perimeter walls (measuring from interior wall plane to interior wall plane) and excludes interior structural components.

For your reference, the square footage area of the Unit, determined in accordance with those Unit boundaries as defined in the Declaration. Note that measurements of rooms set forth on this floor plan are generally taken at the greatest points of each given room (as if the room were a perfect rectangle), without regard for any cutouts. Accordingly, the area of the actual room will typically be smaller than the product obtained by multiplying the stated length times width.





RESIDENCES BY

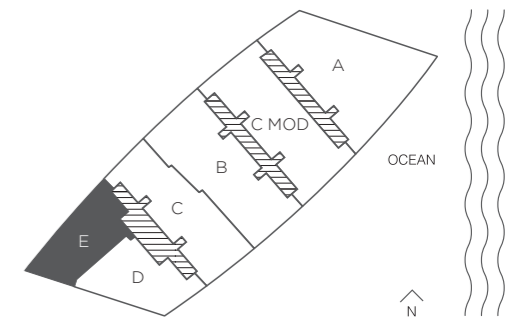
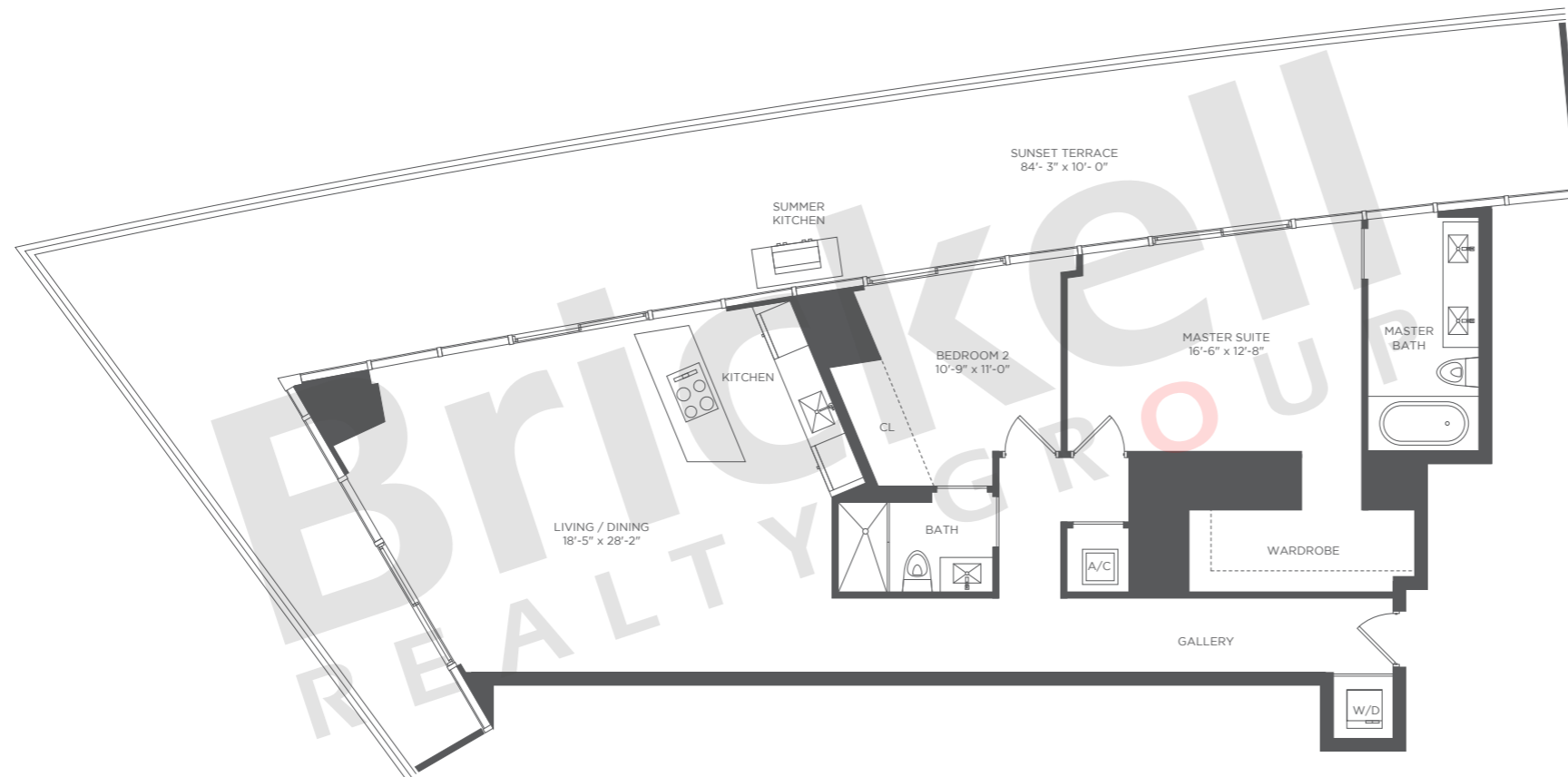
 **ARMANI / CASA**

## RESIDENCE E

Typical Floor Plan - Level 28

2 Bedrooms · 2 Baths

	SQ FT	M <sup>2</sup>
Interior	1,443	134.1
Terrace	996	92.5
<b>Total</b>	<b>2,439</b>	<b>226.6</b>



# Brickell

REALTY GROUP

2071 NW 112th Avenue, Miami, FL 33172

[www.brickell-realty.com/Armani.html](http://www.brickell-realty.com/Armani.html)

Oral representation cannot be relied upon as correctly stating representations of the developer. Renderings of residences may not reflect the final products. Dimensions, specifications, improvements, rendering, plans, land uses, materials, amenities, prices, and availability are subject to change at the developer's discretion without notice.

Stated dimensions are approximate and measured to the exterior boundaries of the exterior walls and the centerline of interior demising walls which in fact vary from the dimensions that would be determined by using the description and definition of the "Unit" set forth in the Declaration which generally only includes the interior airspace between the perimeter walls (measuring from interior wall plane to interior wall plane) and excludes interior structural components.

For your reference, the square footage area of the Unit, determined in accordance with those Unit boundaries as defined in the Declaration. Note that measurements of rooms set forth on this floor plan are generally taken at the greatest points of each given room (as if the room were a perfect rectangle), without regard for any cutouts. Accordingly, the area of the actual room will typically be smaller than the product obtained by multiplying the stated length times width.



RESIDENCES BY

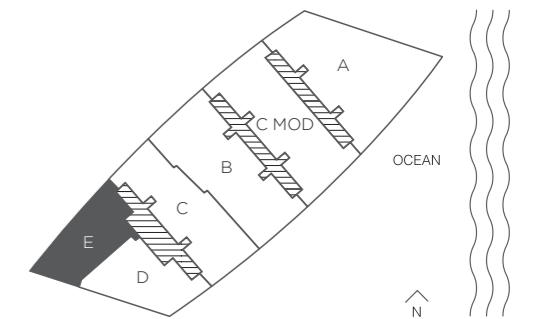
ARMANI / CASA

### RESIDENCE E

Typical Floor Plan - Level 53

2 Bedrooms · 2 Baths

	SQ FT	M <sup>2</sup>
Interior	1,567	145.6
Terrace	1,117	103.8
<b>Total</b>	<b>2,684</b>	<b>249.4</b>



# Brickell

REALTY GROUP

2071 NW 112th Avenue, Miami, FL 33172

[www.brickell-realty.com/Armani.html](http://www.brickell-realty.com/Armani.html)

Oral representation cannot be relied upon as correctly stating representations of the developer. Renderings of residences may not reflect the final products. Dimensions, specifications, improvements, rendering, plans, land uses, materials, amenities, prices, and availability are subject to change at the developer's discretion without notice.

Stated dimensions are approximate and measured to the exterior boundaries of the exterior walls and the centerline of interior demising walls which in fact vary from the dimensions that would be determined by using the description and definition of the "Unit" set forth in the Declaration which generally only includes the interior airspace between the perimeter walls (measuring from interior wall plane to interior wall plane) and excludes interior structural components.

For your reference, the square footage area of the Unit, determined in accordance with those Unit boundaries as defined in the Declaration. Note that measurements of rooms set forth on this floor plan are generally taken at the greatest points of each given room (as if the room were a perfect rectangle), without regard for any cutouts. Accordingly, the area of the actual room will typically be smaller than the product obtained by multiplying the stated length times width.

