



**ONE RIVER POINT**  
BY RAFAEL VIÑOLY

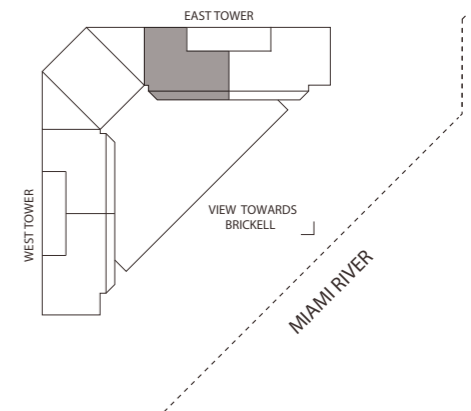
**Residence B1E**

3 Bedrooms · 3.5 Baths  
Library

	SQ FT	M <sup>2</sup>
Interior	3,078	285.9
Terrace	767	71.3
<b>Total</b>	<b>3,845</b>	<b>357.2</b>



VIEW TOWARDS  
BRICKELL



**Brickell**  
REALTY GROUP

2071 NW 112th Avenue, Miami, FL 33172

[www.brickell-realty.com/OneRiverPoint.html](http://www.brickell-realty.com/OneRiverPoint.html)

Oral representation cannot be relied upon as correctly stating representations of the developer. Pictures of homes and condos may not reflect the final products which may vary. Dimensions, specifications, improvements, rendering, plans, land uses, materials, amenities, prices, and availability are subject to change at the developer's discretion without notice.

Stated dimensions are approximate and measured to the exterior boundaries of the exterior walls and the centerline of interior demising walls which in fact vary from the dimensions that would be determined by using the description and definition of the "Unit" set forth in the Declaration (which generally only includes the interior airspace between the perimeter walls and excludes interior structural components).



**ONE RIVER POINT**  
BY RAFAEL VIÑOLY

**Residence B2E**

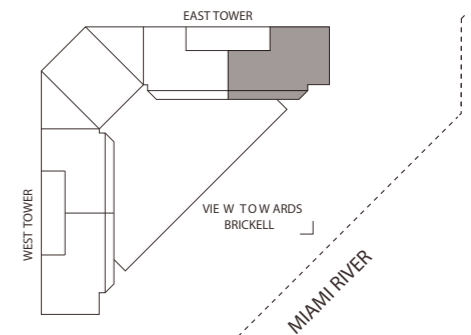
4 Bedrooms · 4.5 Baths

	SQ FT	M <sup>2</sup>
Interior	3,820	354.9
Terrace	767	71.3
<b>Total</b>	<b>4,587</b>	<b>426.2</b>



VIEW TOWARDS  
BISCAYNE BAY

VIEW TOWARDS  
BRICKELL



**Brickell**  
REALTY GROUP

2071 NW 112th Avenue, Miami, FL 33172

[www.brickell-realty.com/OneRiverPoint.html](http://www.brickell-realty.com/OneRiverPoint.html)

Oral representation cannot be relied upon as correctly stating representations of the developer. Pictures of homes and condos may not reflect the final products which may vary. Dimensions, specifications, improvements, rendering, plans, land uses, materials, amenities, prices, and availability are subject to change at the developer's discretion without notice.

Stated dimensions are approximate and measured to the exterior boundaries of the exterior walls and the centerline of interior demising walls which in fact vary from the dimensions that would be determined by using the description and definition of the "Unit" set forth in the Declaration (which generally only includes the interior airspace between the perimeter walls and excludes interior structural components).

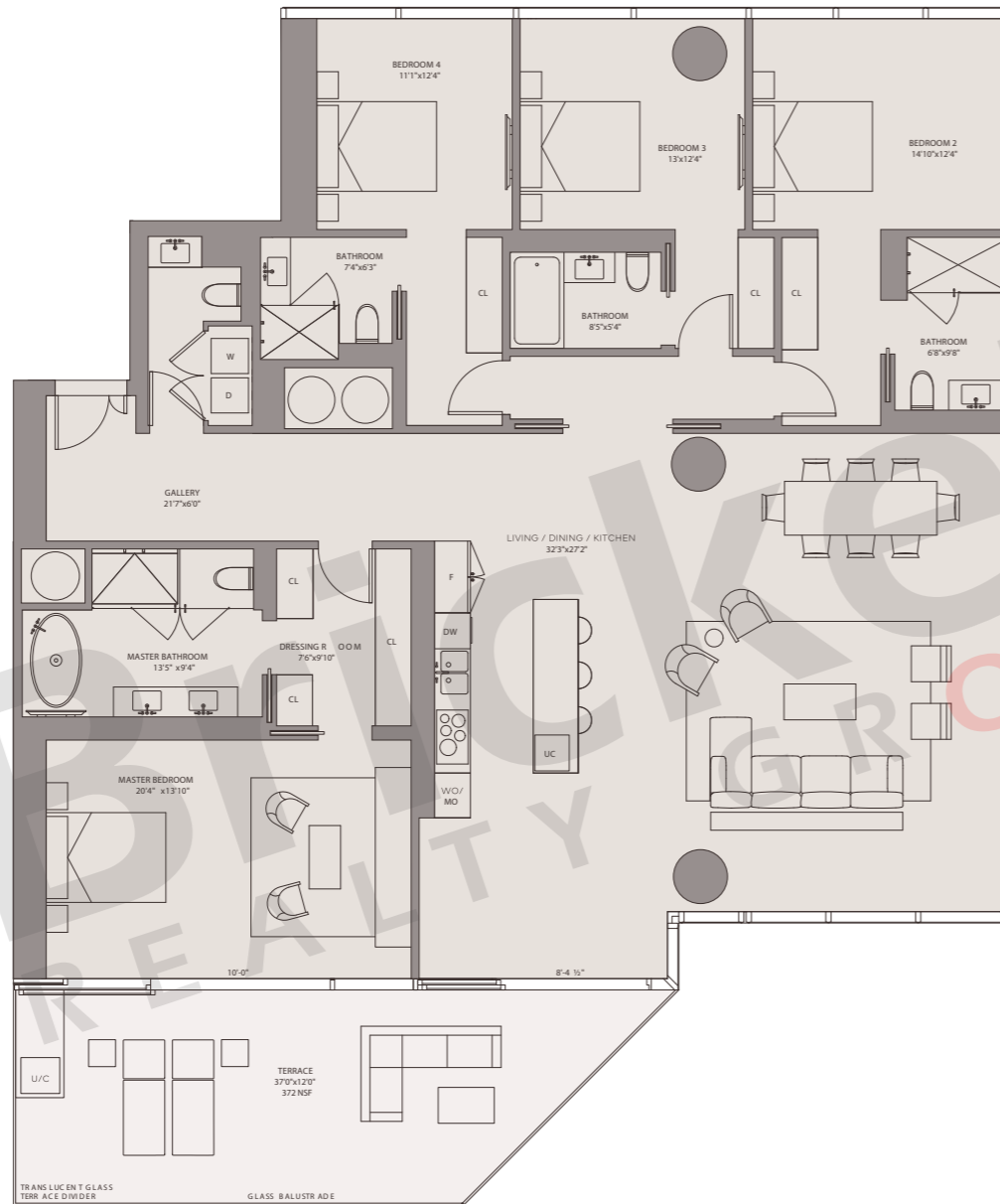


**ONE RIVER POINT**  
BY RAFAEL VIÑOLY

**Residence C1E**

4 Bedrooms · 4.5 Baths

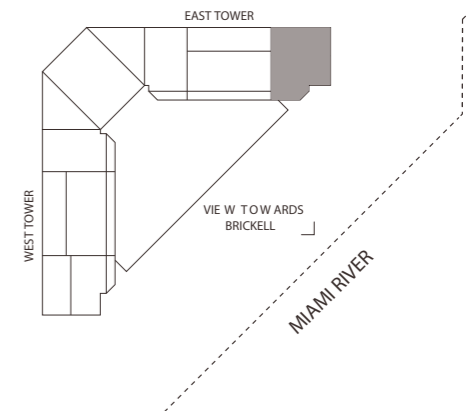
	SQ FT	M <sup>2</sup>
Interior	2,713	252.0
Terrace	372	34.6
<b>Total</b>	<b>3,085</b>	<b>286.6</b>



VIEW TOWARDS  
BISCAYNE BAY



VIEW TOWARDS  
BRICKELL



**Brickell**  
REALTY GROUP

2071 NW 112th Avenue, Miami, FL 33172

[www.brickell-realty.com/OneRiverPoint.html](http://www.brickell-realty.com/OneRiverPoint.html)

Oral representation cannot be relied upon as correctly stating representations of the developer. Pictures of homes and condos may not reflect the final products which may vary. Dimensions, specifications, improvements, rendering, plans, land uses, materials, amenities, prices, and availability are subject to change at the developer's discretion without notice.

Stated dimensions are approximate and measured to the exterior boundaries of the exterior walls and the centerline of interior demising walls which in fact vary from the dimensions that would be determined by using the description and definition of the "Unit" set forth in the Declaration (which generally only includes the interior airspace between the perimeter walls and excludes interior structural components).

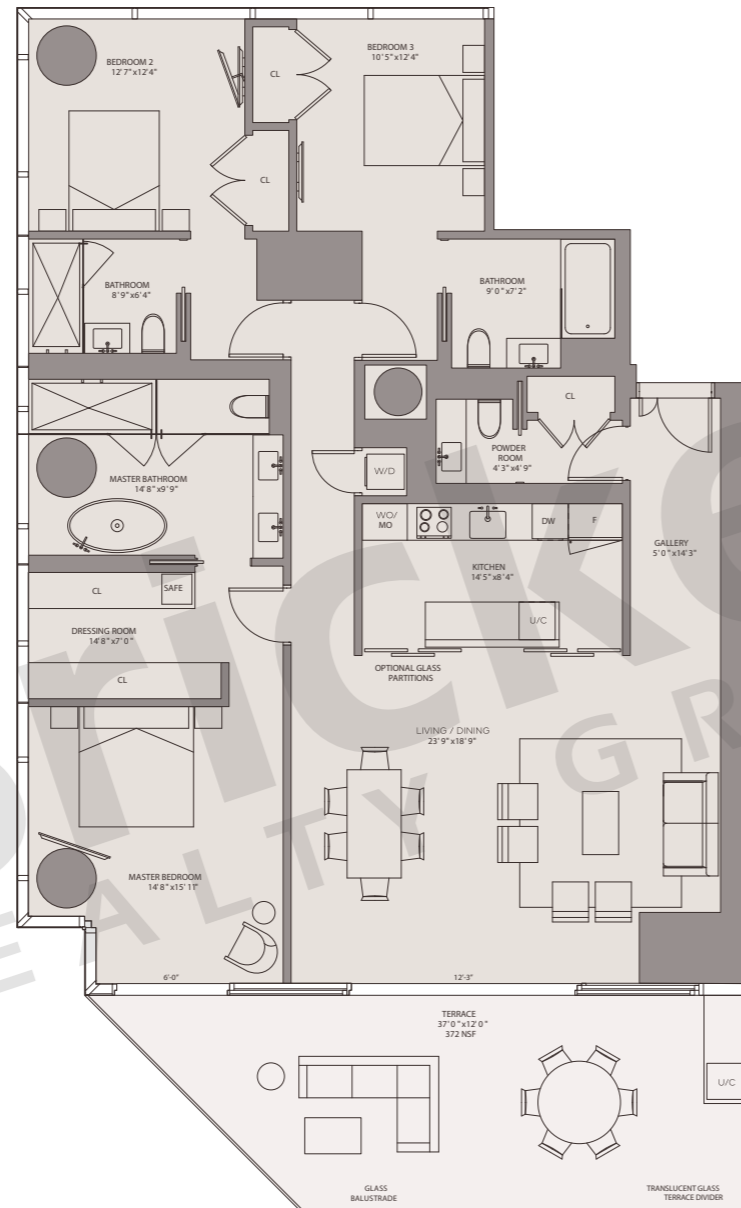


**ONE RIVER POINT**  
BY RAFAEL VIÑOLY

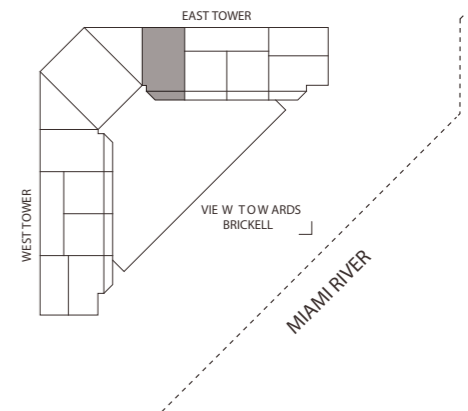
**Residence D1E**

3 Bedrooms · 3.5 Baths · Library

	SQ FT	M <sup>2</sup>
Interior	1,971	183.1
Terrace	372	34.6
<b>Total</b>	<b>2,343</b>	<b>217.7</b>



VIEW TOWARDS  
BRICKELL



**Brickell**  
REALTY GROUP

2071 NW 112th Avenue, Miami, FL 33172

[www.brickell-realty.com/OneRiverPoint.html](http://www.brickell-realty.com/OneRiverPoint.html)

Oral representation cannot be relied upon as correctly stating representations of the developer. Pictures of homes and condos may not reflect the final products which may vary. Dimensions, specifications, improvements, rendering, plans, land uses, materials, amenities, prices, and availability are subject to change at the developer's discretion without notice.

Stated dimensions are approximate and measured to the exterior boundaries of the exterior walls and the centerline of interior demising walls which in fact vary from the dimensions that would be determined by using the description and definition of the "Unit" set forth in the Declaration (which generally only includes the interior airspace between the perimeter walls and excludes interior structural components).



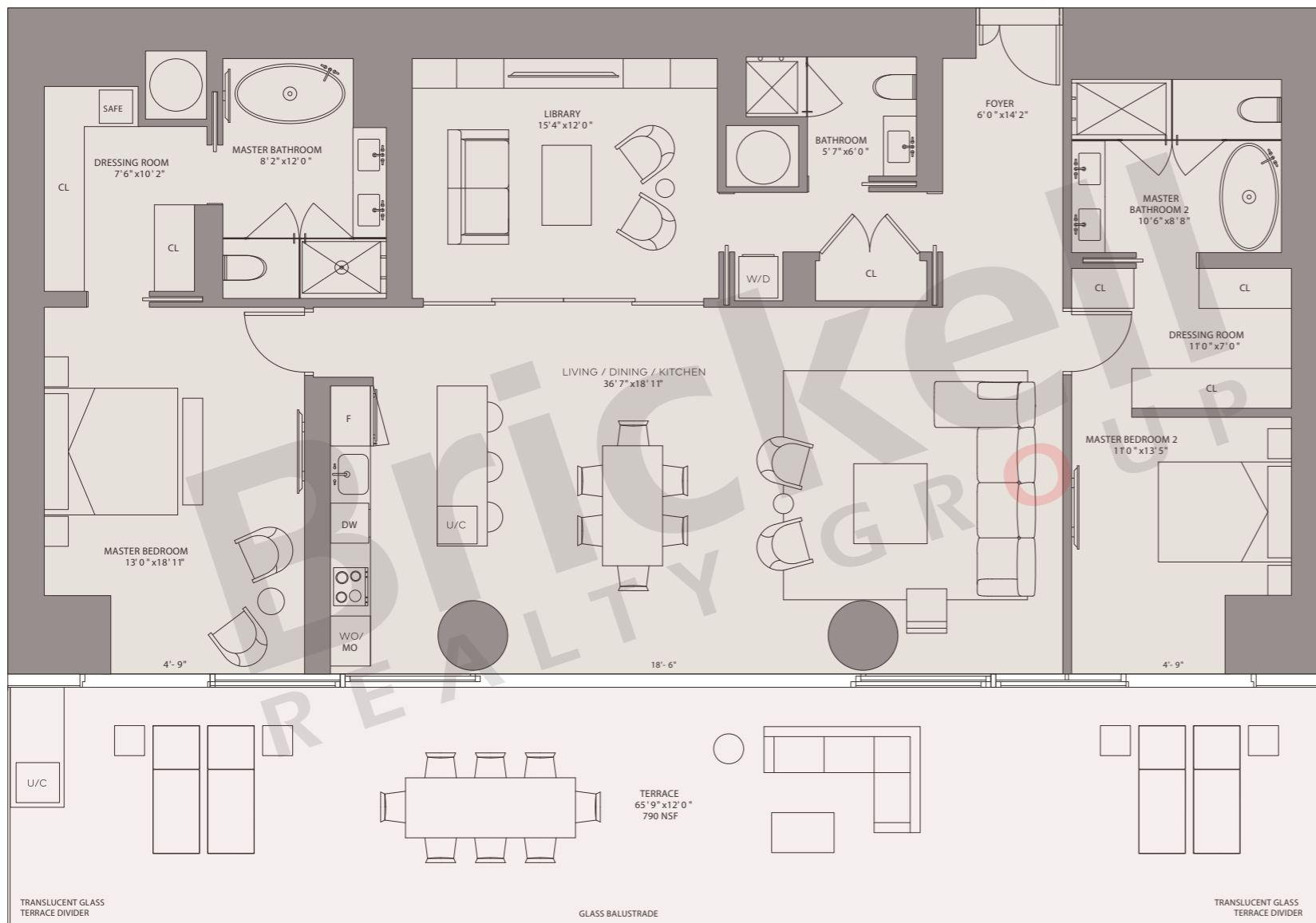
# ONE RIVER POINT

BY RAFAEL VIÑOLY

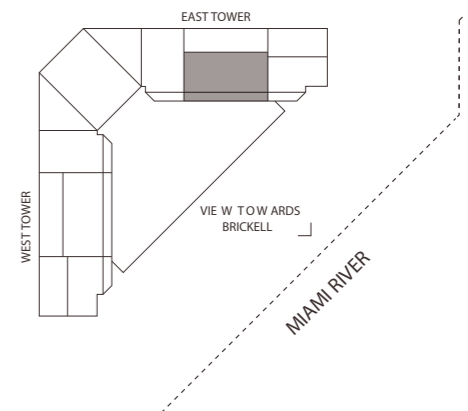
## Residence E1E

2 Bedrooms · 3 Baths · Library

	SQ FT	M <sup>2</sup>
Interior	2,187	203.2
Terrace	790	73.4
<b>Total</b>	<b>2,977</b>	<b>276.6</b>



VIEW TOWARDS  
BRICKELL



**Brickell**  
REALTY GROUP

2071 NW 112th Avenue, Miami, FL 33172

[www.brickell-realty.com/OneRiverPoint.html](http://www.brickell-realty.com/OneRiverPoint.html)

Oral representation cannot be relied upon as correctly stating representations of the developer. Pictures of homes and condos may not reflect the final products which may vary. Dimensions, specifications, improvements, rendering, plans, land uses, materials, amenities, prices, and availability are subject to change at the developer's discretion without notice.

Stated dimensions are approximate and measured to the exterior boundaries of the exterior walls and the centerline of interior demising walls which in fact vary from the dimensions that would be determined by using the description and definition of the "Unit" set forth in the Declaration (which generally only includes the interior airspace between the perimeter walls and excludes interior structural components).

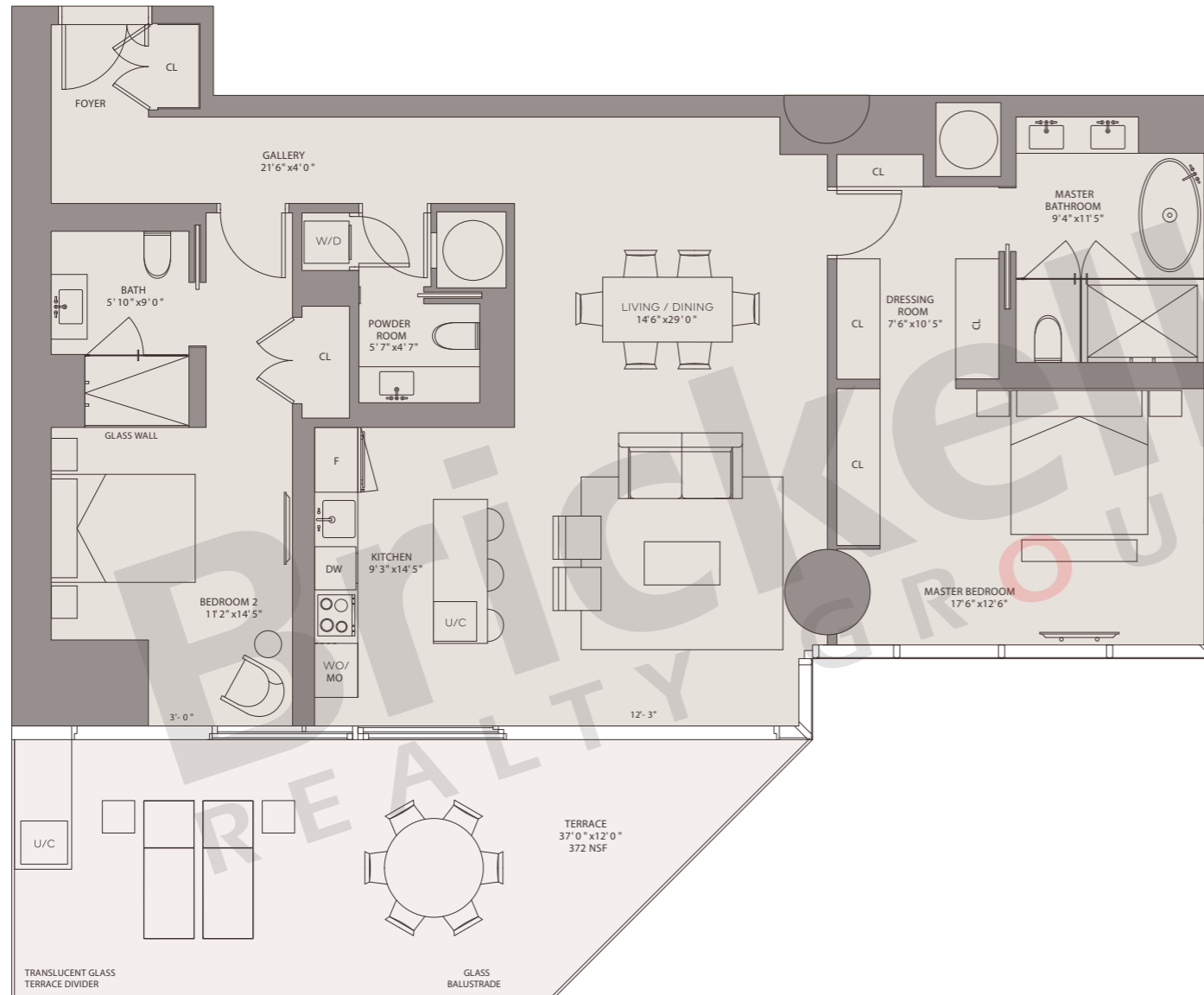


**ONE RIVER POINT**  
BY RAFAEL VIÑOLY

**Residence E2E**

2 Bedrooms · 2.5 Baths

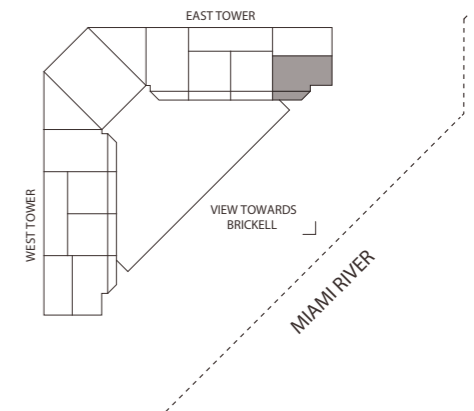
	SQ FT	M <sup>2</sup>
Interior	1,599	148.5
Terrace	372	34.6
<b>Total</b>	<b>1,971</b>	<b>183.1</b>



VIEW TOWARDS  
BISCAYNE BAY



VIEW TOWARDS  
BRICKELL



**Brickell**  
REALTY GROUP

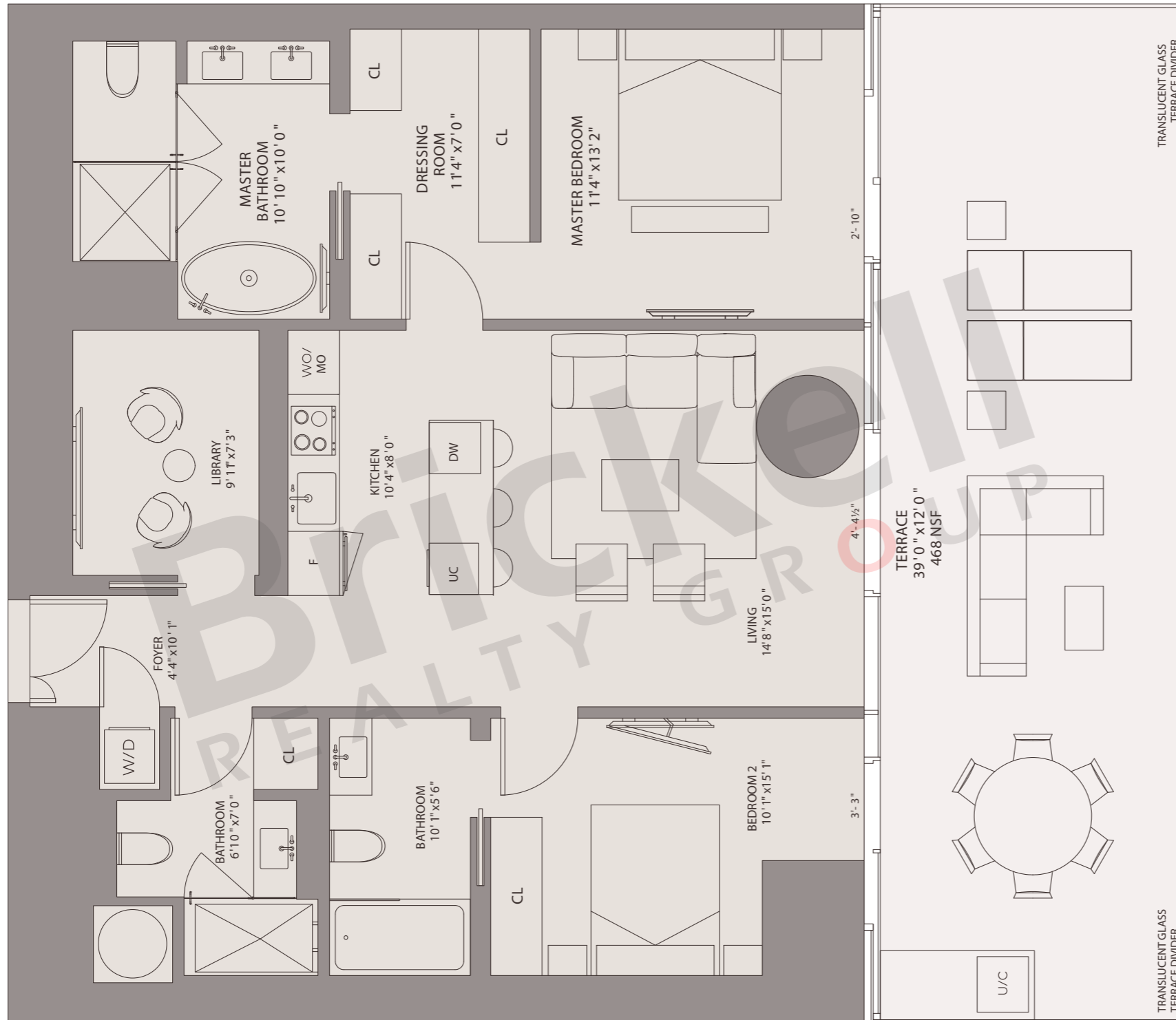
2071 NW 112th Avenue, Miami, FL 33172

[www.brickell-realty.com/OneRiverPoint.html](http://www.brickell-realty.com/OneRiverPoint.html)

Oral representation cannot be relied upon as correctly stating representations of the developer. Pictures of homes and condos may not reflect the final products which may vary. Dimensions, specifications, improvements, rendering, plans, land uses, materials, amenities, prices, and availability are subject to change at the developer's discretion without notice.

Stated dimensions are approximate and measured to the exterior boundaries of the exterior walls and the centerline of interior demising walls which in fact vary from the dimensions that would be determined by using the description and definition of the "Unit" set forth in the Declaration (which generally only includes the interior airspace between the perimeter walls and excludes interior structural components).

VIEW TOWARDS  
BISCAYNE BAY



VIEW TOWARDS  
BRICKELL

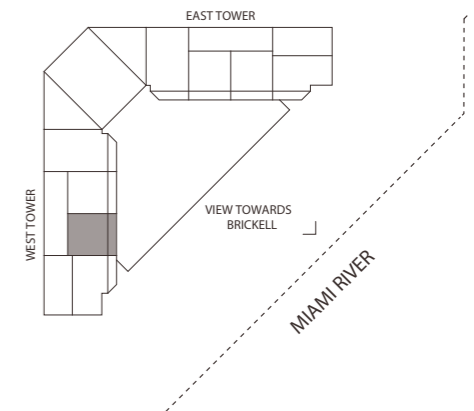


**ONE RIVER POINT**  
BY RAFAEL VIÑOLY

**Residence E3W**

2 Bedrooms · 2.5 Baths  
Library

	SQ FT	M <sup>2</sup>
Interior	1,299	120.7
Terrace	468	43.5
<b>Total</b>	<b>1,767</b>	<b>164.2</b>



**Brickell**  
REALTY GROUP

2071 NW 112th Avenue, Miami, FL 33172

[www.brickell-realty.com/OneRiverPoint.html](http://www.brickell-realty.com/OneRiverPoint.html)

Oral representation cannot be relied upon as correctly stating representations of the developer. Pictures of homes and condos may not reflect the final products which may vary. Dimensions, specifications, improvements, rendering, plans, land uses, materials, amenities, prices, and availability are subject to change at the developer's discretion without notice.

Stated dimensions are approximate and measured to the exterior boundaries of the exterior walls and the centerline of interior demising walls which in fact vary from the dimensions that would be determined by using the description and definition of the "Unit" set forth in the Declaration (which generally only includes the interior airspace between the perimeter walls and excludes interior structural components).



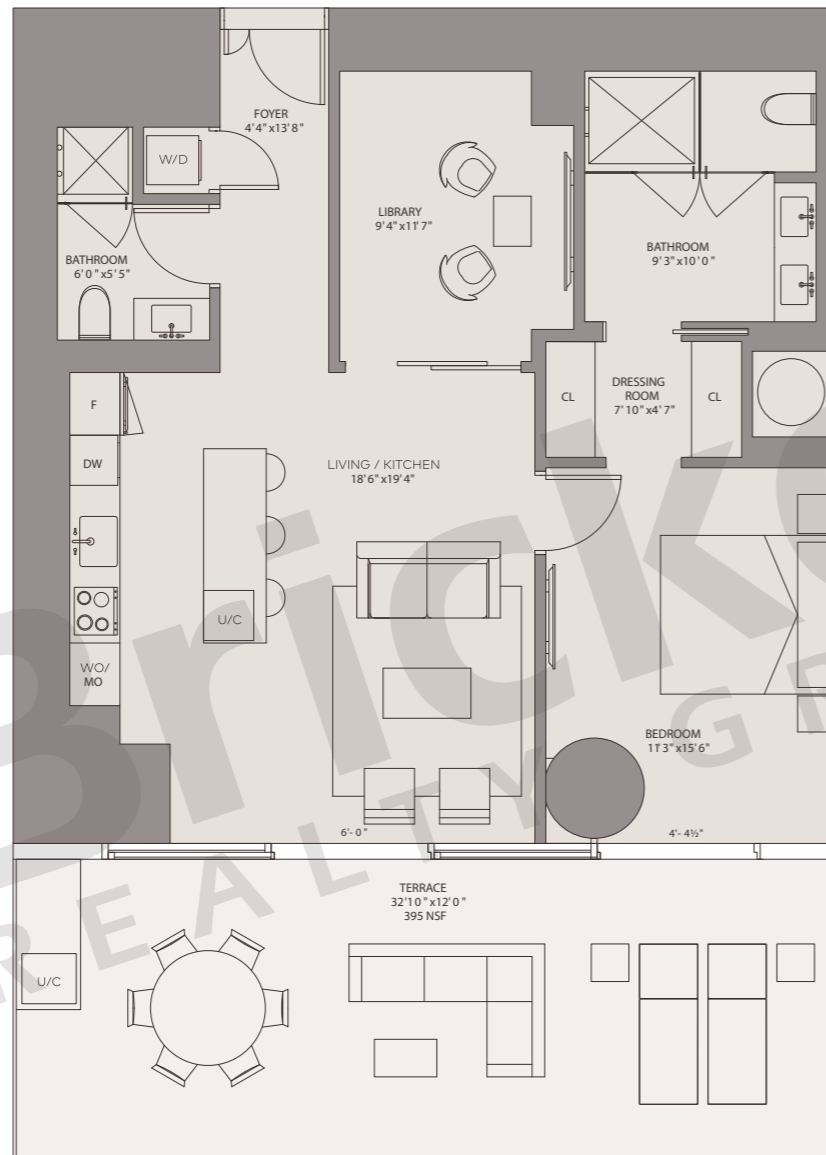
# ONE RIVER POINT

BY RAFAEL VIÑOLY

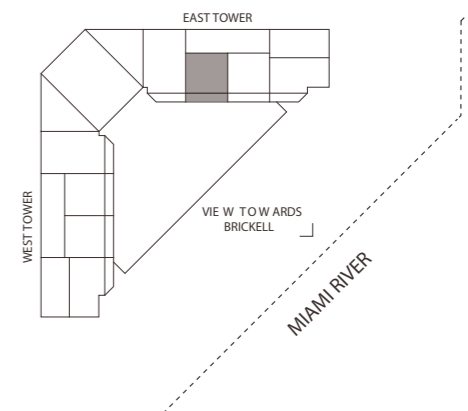
## Residence F1

1 Bedroom · 1.5 Baths · Library

	SQ FT	M <sup>2</sup>
Interior	1,095	101.7
Terrace	395	36.7
<b>Total</b>	<b>1,490</b>	<b>138.4</b>



VIEW TOWARDS  
BRICKELL



# Brickell

REALTY GROUP

2071 NW 112th Avenue, Miami, FL 33172

[www.brickell-realty.com/OneRiverPoint.html](http://www.brickell-realty.com/OneRiverPoint.html)

Oral representation cannot be relied upon as correctly stating representations of the developer. Pictures of homes and condos may not reflect the final products which may vary. Dimensions, specifications, improvements, rendering, plans, land uses, materials, amenities, prices, and availability are subject to change at the developer's discretion without notice.

Stated dimensions are approximate and measured to the exterior boundaries of the exterior walls and the centerline of interior demising walls which in fact vary from the dimensions that would be determined by using the description and definition of the "Unit" set forth in the Declaration (which generally only includes the interior airspace between the perimeter walls and excludes interior structural components).



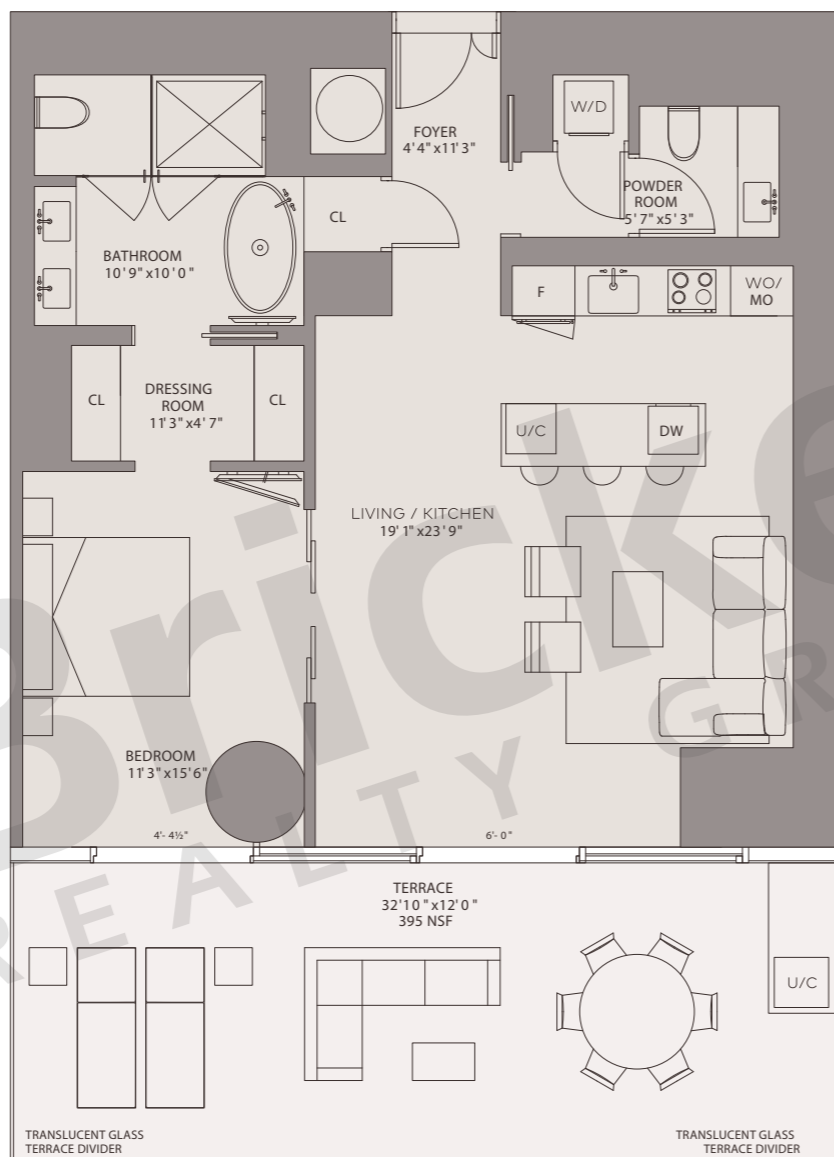


**ONE RIVER POINT**  
BY RAFAEL VIÑOLY

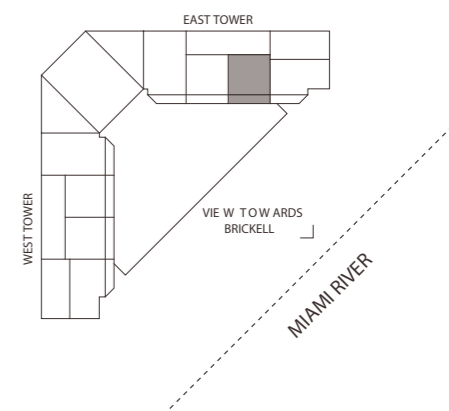
**Residence F2E**

1 Bedroom · 1.5 Baths

	SQ FT	M <sup>2</sup>
Interior	1,095	101.7
Terrace	395	36.7
<b>Total</b>	<b>1,490</b>	<b>138.4</b>



VIEW TOWARDS  
BRICKELL



**Brickell**  
REALTY GROUP

2071 NW 112th Avenue, Miami, FL 33172

[www.brickell-realty.com/OneRiverPoint.html](http://www.brickell-realty.com/OneRiverPoint.html)

Oral representation cannot be relied upon as correctly stating representations of the developer. Pictures of homes and condos may not reflect the final products which may vary. Dimensions, specifications, improvements, rendering, plans, land uses, materials, amenities, prices, and availability are subject to change at the developer's discretion without notice.

Stated dimensions are approximate and measured to the exterior boundaries of the exterior walls and the centerline of interior demising walls which in fact vary from the dimensions that would be determined by using the description and definition of the "Unit" set forth in the Declaration (which generally only includes the interior airspace between the perimeter walls and excludes interior structural components).

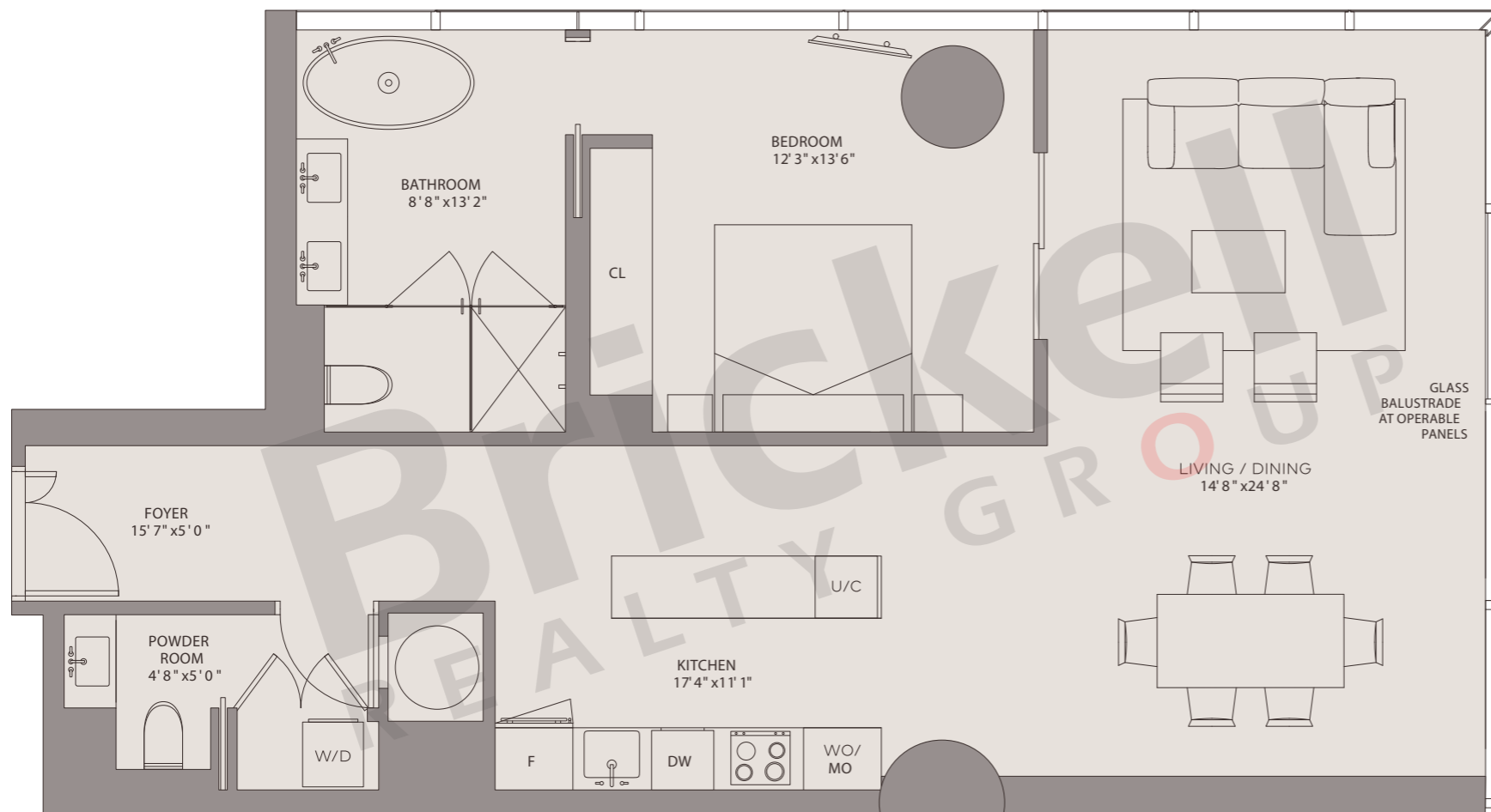


**ONE RIVER POINT**  
BY RAFAEL VIÑOLY

**Residence F3E**

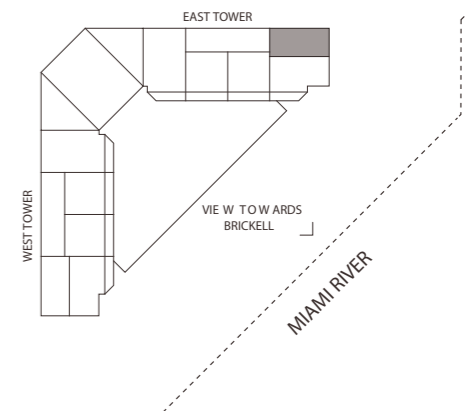
1 Bedroom · 1.5 Baths

	SQ FT	M <sup>2</sup>
Total	1,100	102.2



VIEW TOWARDS  
BISCAYNE BAY

VIEW TOWARDS  
BRICKELL



**Brickell**  
REALTY GROUP

2071 NW 112th Avenue, Miami, FL 33172

[www.brickell-realty.com/OneRiverPoint.html](http://www.brickell-realty.com/OneRiverPoint.html)

Oral representation cannot be relied upon as correctly stating representations of the developer. Pictures of homes and condos may not reflect the final products which may vary. Dimensions, specifications, improvements, rendering, plans, land uses, materials, amenities, prices, and availability are subject to change at the developer's discretion without notice.

Stated dimensions are approximate and measured to the exterior boundaries of the exterior walls and the centerline of interior demising walls which in fact vary from the dimensions that would be determined by using the description and definition of the "Unit" set forth in the Declaration (which generally only includes the interior airspace between the perimeter walls and excludes interior structural components).

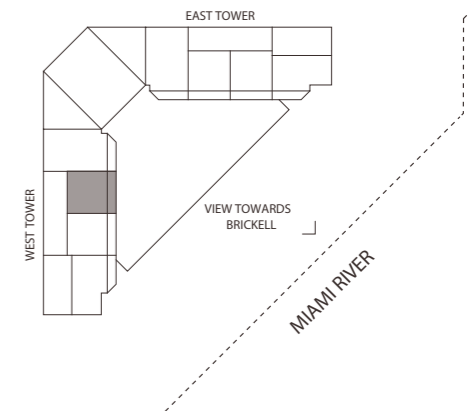


**ONE RIVER POINT**  
BY RAFAEL VIÑOLY

**Residence F4W**

1 Bedroom · 1.5 Baths

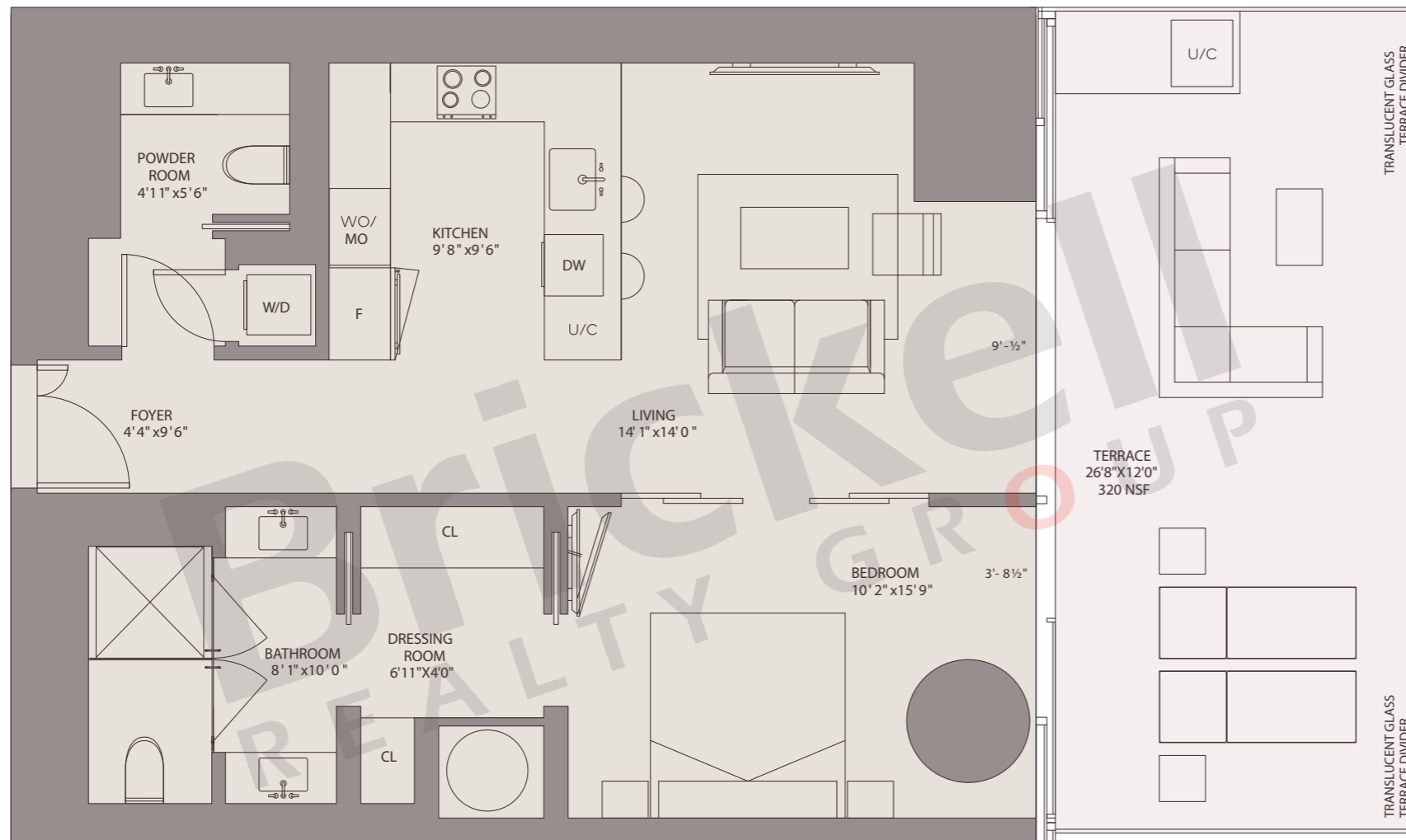
	SQ FT	M <sup>2</sup>
Interior	890	82.7
Terrace	320	29.7
<b>Total</b>	<b>1,210</b>	<b>112.4</b>



VIEW TOWARDS  
BISCAYNE BAY



VIEW TOWARDS  
BRICKELL



**Brickell**  
REALTY GROUP

2071 NW 112th Avenue, Miami, FL 33172

[www.brickell-realty.com/OneRiverPoint.html](http://www.brickell-realty.com/OneRiverPoint.html)

Oral representation cannot be relied upon as correctly stating representations of the developer. Pictures of homes and condos may not reflect the final products which may vary. Dimensions, specifications, improvements, rendering, plans, land uses, materials, amenities, prices, and availability are subject to change at the developer's discretion without notice.

Stated dimensions are approximate and measured to the exterior boundaries of the exterior walls and the centerline of interior demising walls which in fact vary from the dimensions that would be determined by using the description and definition of the "Unit" set forth in the Declaration (which generally only includes the interior airspace between the perimeter walls and excludes interior structural components).

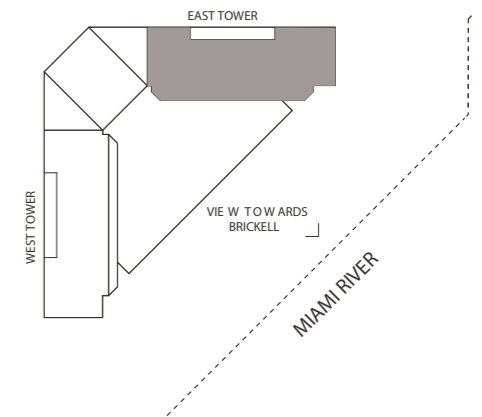
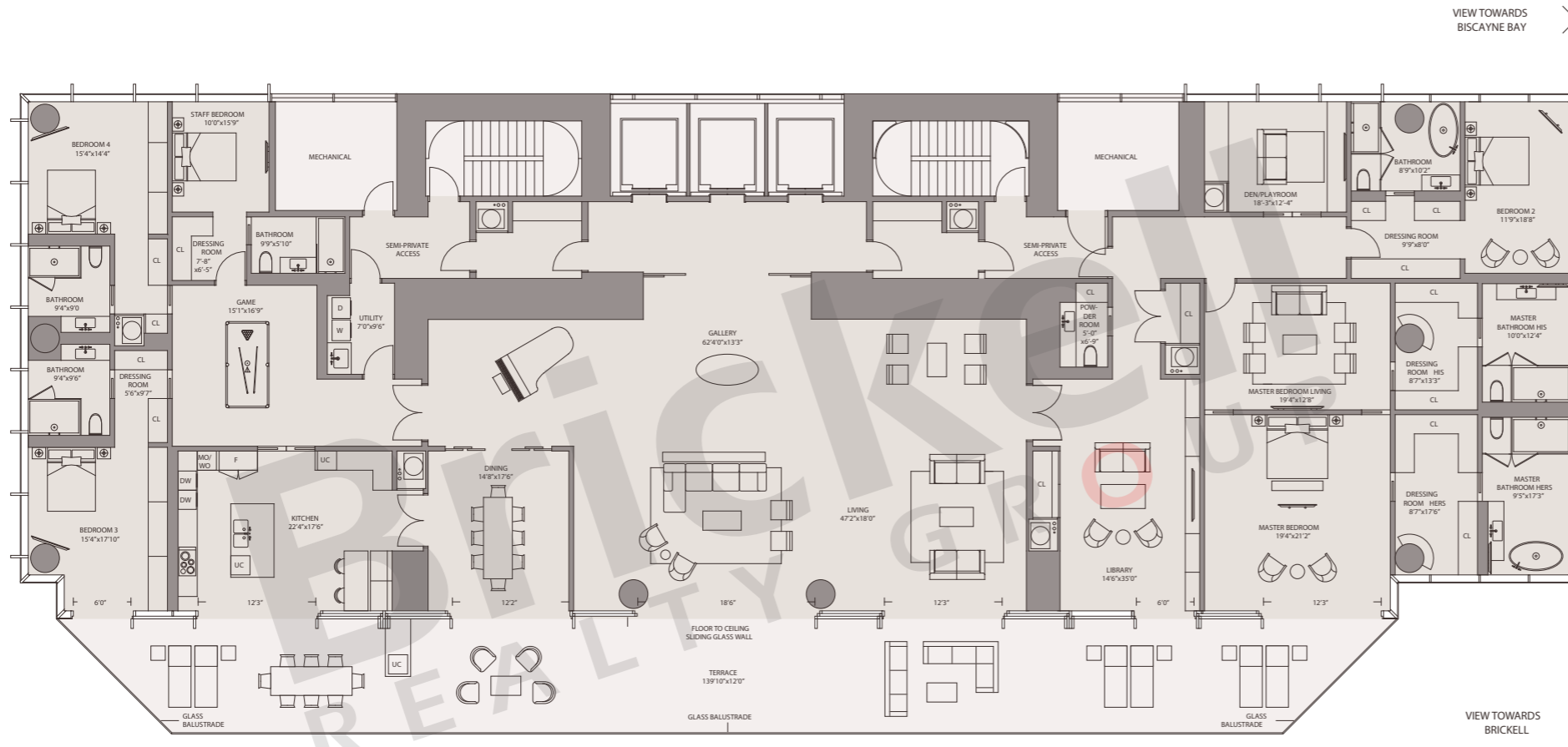


**ONE RIVER POINT**  
BY RAFAEL VIÑOLY

**Penthouse 1**

5 Bedrooms · 6 Baths

	SQ FT	M <sup>2</sup>
Interior	7,658	711.4
Terrace	1,534	142.5
<b>Total</b>	<b>9,192</b>	<b>853.9</b>



**Brickell**  
REALTY GROUP

2071 NW 112th Avenue, Miami, FL 33172

[www.brickell-realty.com/OneRiverPoint.html](http://www.brickell-realty.com/OneRiverPoint.html)

Oral representation cannot be relied upon as correctly stating representations of the developer. Pictures of homes and condos may not reflect the final products which may vary. Dimensions, specifications, improvements, rendering, plans, land uses, materials, amenities, prices, and availability are subject to change at the developer's discretion without notice.

Stated dimensions are approximate and measured to the exterior boundaries of the exterior walls and the centerline of interior demising walls which in fact vary from the dimensions that would be determined by using the description and definition of the "Unit" set forth in the Declaration (which generally only includes the interior airspace between the perimeter walls and excludes interior structural components).

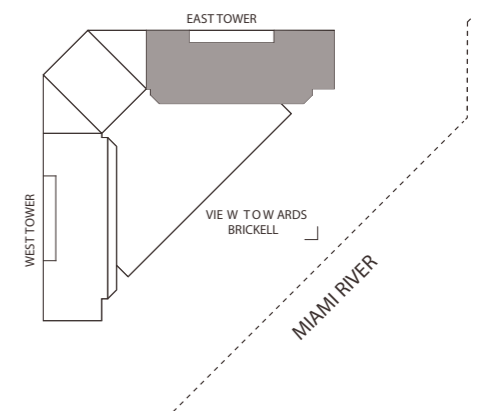
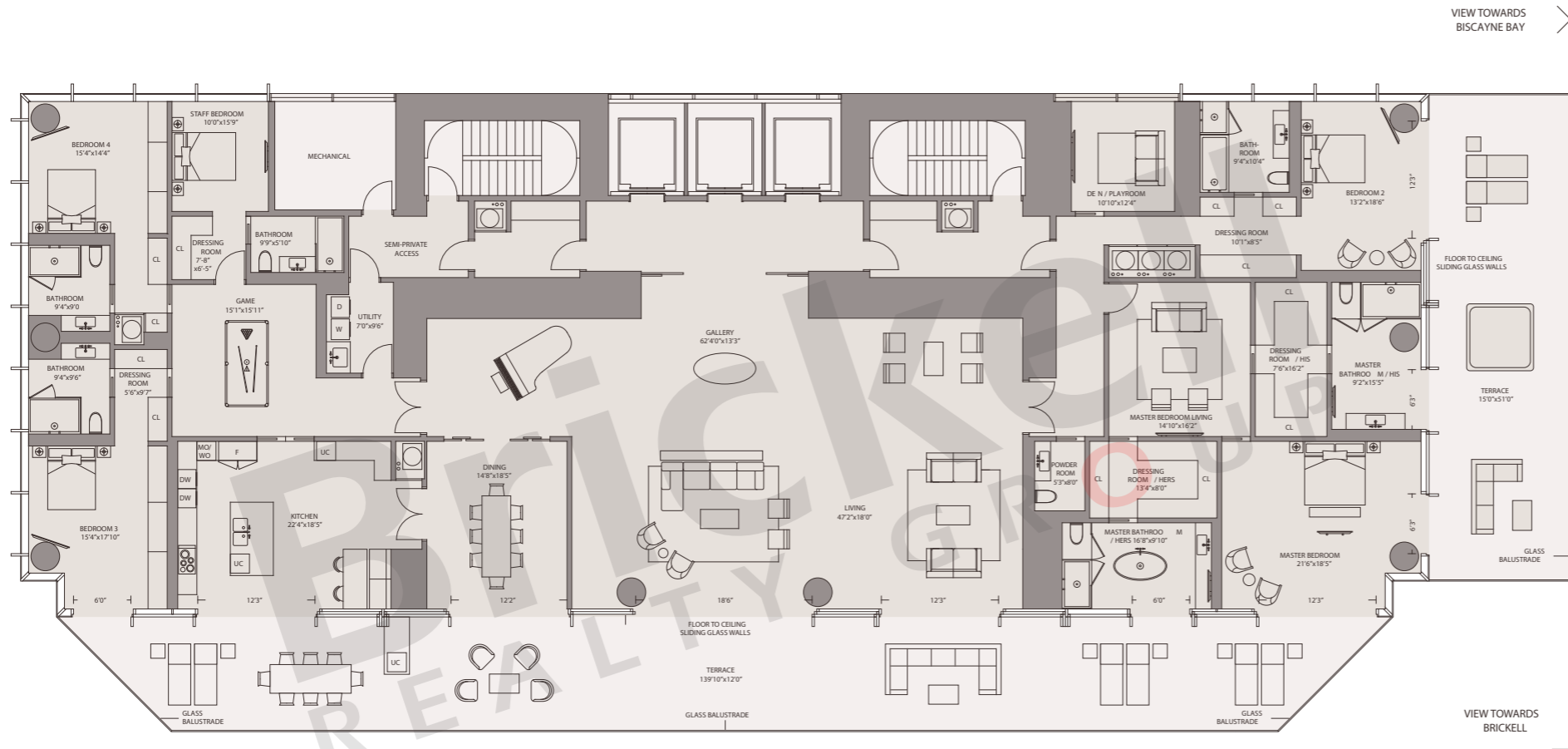


**ONE RIVER POINT**  
BY RAFAEL VIÑOLY

**Penthouse 2**

5 Bedrooms · 6 Baths

	SQ FT	M <sup>2</sup>
Interior	7,033	653.4
Terrace	2,299	213.6
<b>Total</b>	<b>9,332</b>	<b>867.0</b>



**Brickell**  
REALTY GROUP

2071 NW 112th Avenue, Miami, FL 33172

[www.brickell-realty.com/OneRiverPoint.html](http://www.brickell-realty.com/OneRiverPoint.html)

Oral representation cannot be relied upon as correctly stating representations of the developer. Pictures of homes and condos may not reflect the final products which may vary. Dimensions, specifications, improvements, rendering, plans, land uses, materials, amenities, prices, and availability are subject to change at the developer's discretion without notice.

Stated dimensions are approximate and measured to the exterior boundaries of the exterior walls and the centerline of interior demising walls which in fact vary from the dimensions that would be determined by using the description and definition of the "Unit" set forth in the Declaration (which generally only includes the interior airspace between the perimeter walls and excludes interior structural components).



**ONE RIVER POINT**  
BY RAFAEL VIÑOLY

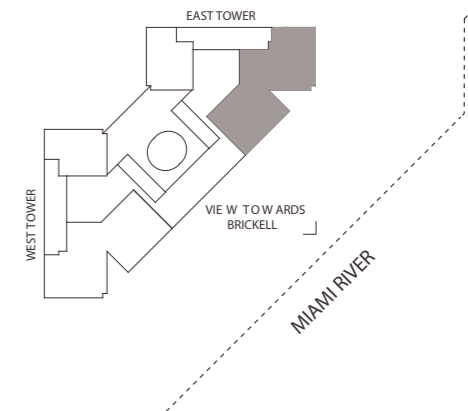
**Sky Loft**

4 Bedrooms · 5 Baths

	SQ FT	M <sup>2</sup>
Interior	5,433	504.7
Terrace	435	40.4
<b>Total</b>	<b>5,868</b>	<b>545.1</b>



VIEW TOWARDS  
BISCAYNE BAY



VIEW TOWARDS  
BRICKELL

**Brickell**  
REALTY GROUP

2071 NW 112th Avenue, Miami, FL 33172

[www.brickell-realty.com/OneRiverPoint.html](http://www.brickell-realty.com/OneRiverPoint.html)

Oral representation cannot be relied upon as correctly stating representations of the developer. Pictures of homes and condos may not reflect the final products which may vary. Dimensions, specifications, improvements, rendering, plans, land uses, materials, amenities, prices, and availability are subject to change at the developer's discretion without notice.

Stated dimensions are approximate and measured to the exterior boundaries of the exterior walls and the centerline of interior demising walls which in fact vary from the dimensions that would be determined by using the description and definition of the "Unit" set forth in the Declaration (which generally only includes the interior airspace between the perimeter walls and excludes interior structural components).



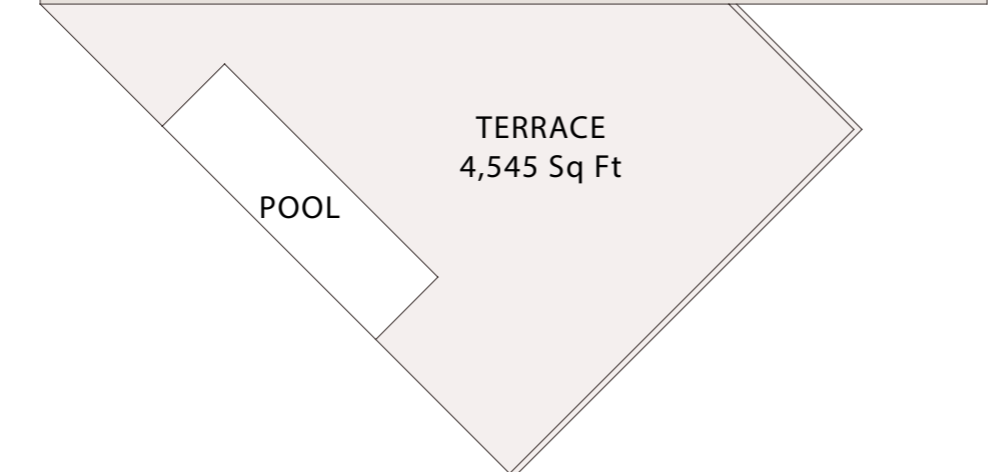
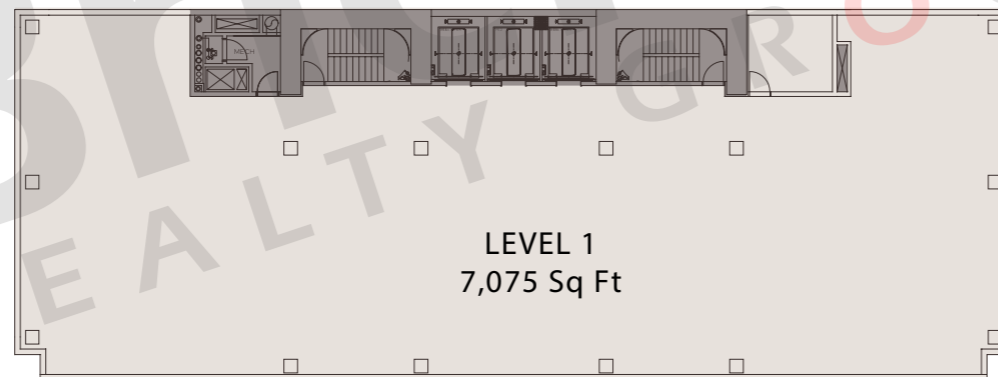
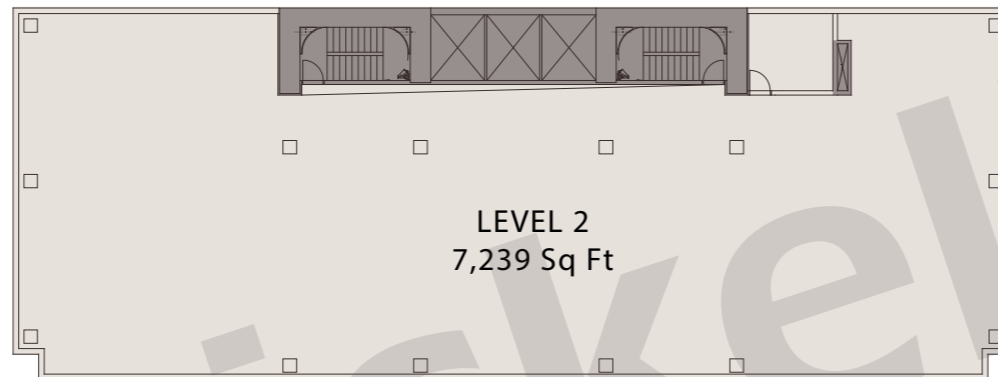
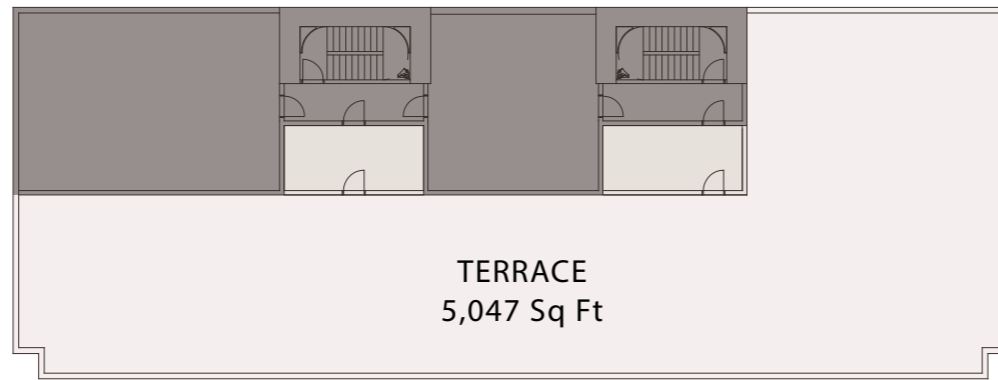
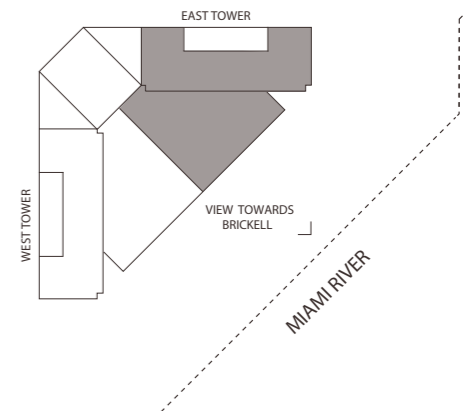
# ONE RIVER POINT

BY RAFAEL VIÑOLY

## Sky Villa East

Duplex with Roof Terrace  
Open plans

	SQ FT	M <sup>2</sup>
Interior	14,314	1329.8
Terraces	9,592	891.1
<b>Total</b>	<b>23,906</b>	<b>2220.9</b>



**Brickell**  
REALTY GROUP

2071 NW 112th Avenue, Miami, FL 33172

[www.brickell-realty.com/OneRiverPoint.html](http://www.brickell-realty.com/OneRiverPoint.html)

Oral representation cannot be relied upon as correctly stating representations of the developer. Pictures of homes and condos may not reflect the final products which may vary. Dimensions, specifications, improvements, rendering, plans, land uses, materials, amenities, prices, and availability are subject to change at the developer's discretion without notice.

Stated dimensions are approximate and measured to the exterior boundaries of the exterior walls and the centerline of interior demising walls which in fact vary from the dimensions that would be determined by using the description and definition of the "Unit" set forth in the Declaration (which generally only includes the interior airspace between the perimeter walls and excludes interior structural components).