

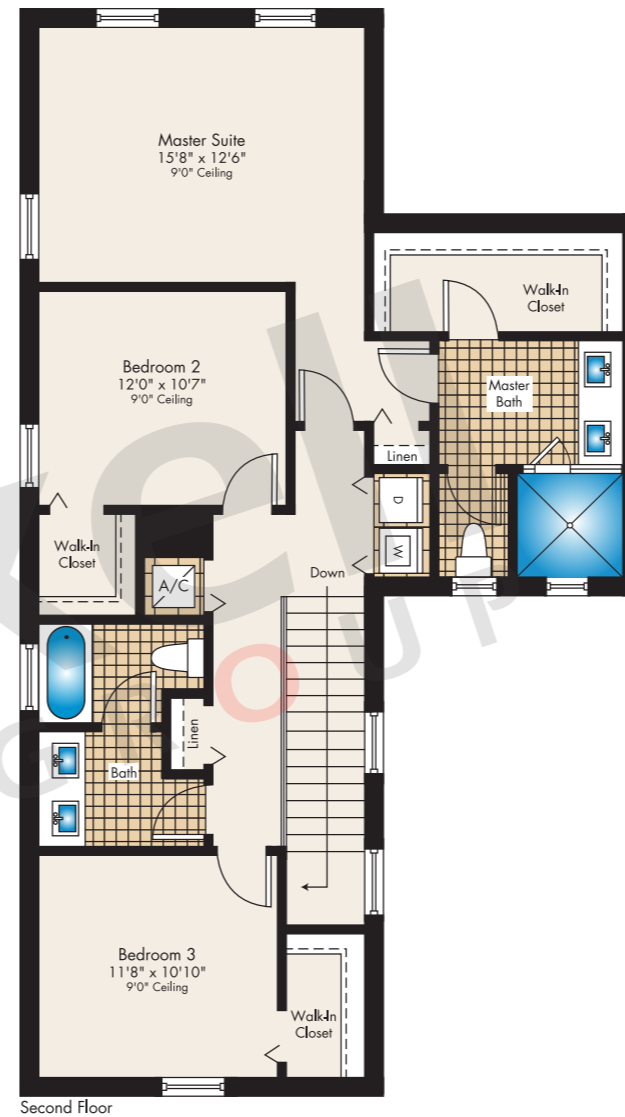
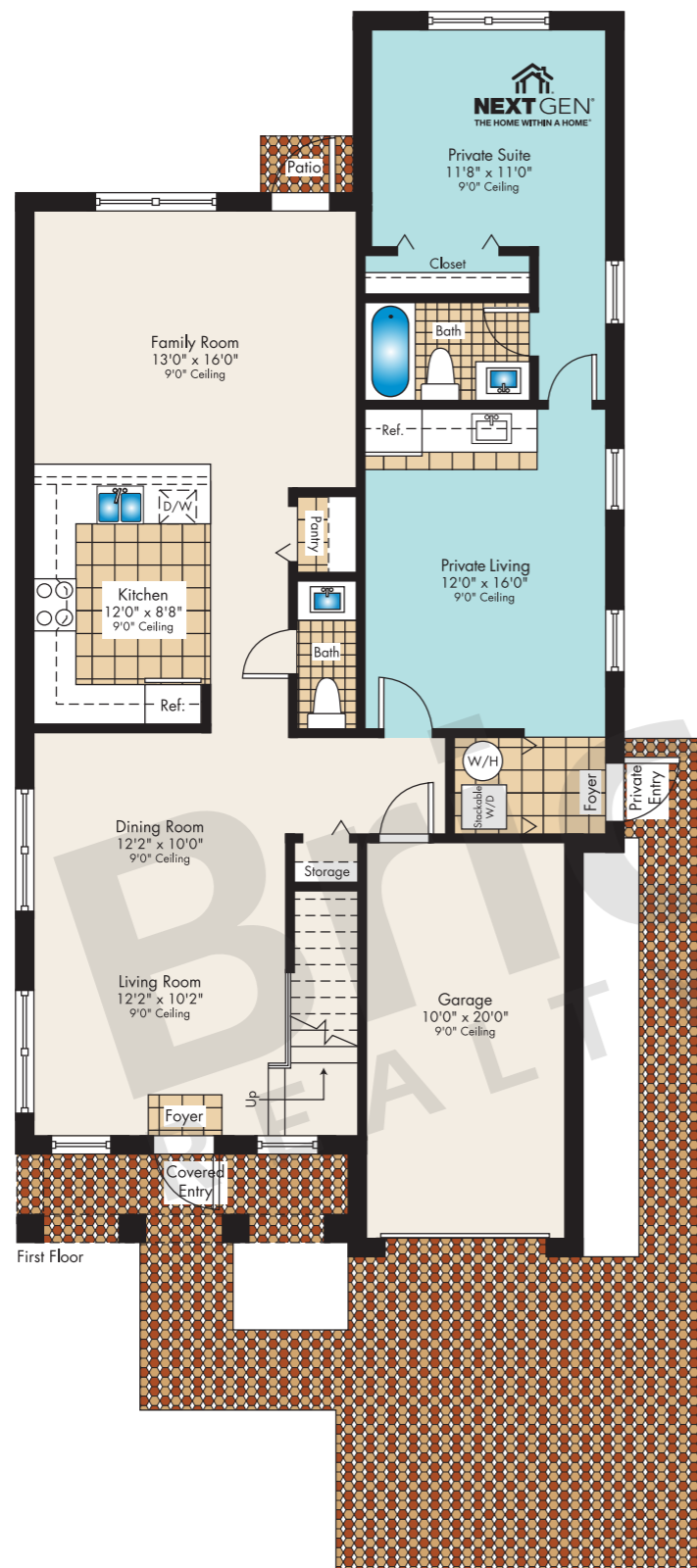
Barbados at *The Isles at Oasis*

The Castaway

Main Home:
2-Story · 3 Bedrooms · 2.5 Baths
Family Room · Garage

NextGen Private Suite:
Living Area · Bedroom · Bath
Kitchenette · Private Entry

	SQ FT	M ²
A/C	1,990	184.9
A/C NextGen	524	48.7
Garage	223	20.7
Covered Entry	75	7.0
Total	2,812	261.3



Brickell
REALTY GROUP

2071 NW 112th Avenue, Miami, FL 33172

www.brickell-realty.com/Barbados.html

Oral representation cannot be relied upon as correctly stating representations of the developer. Pictures of homes and condos may not reflect the final products which may vary. Dimensions, specifications, improvements, rendering, plans, land uses, materials, amenities, prices, and availability are subject to change at the developer's discretion without notice.

Stated dimensions are approximate and measured to the exterior boundaries of the exterior walls and the centerline of interior demising walls which in fact vary from the dimensions that would be determined by using the description and definition of the "Unit" set forth in the Declaration (which generally only includes the interior airspace between the perimeter walls and excludes interior structural components).

Barbados at *The Isles at Oasis*

The Marina

2-Story · 3 Bedrooms · 2.5 Baths
Family Room · 2-Car Garage

	SQ FT	M ²
A/C	1,965	182.5
Garage	514	47.8
Entry	29	2.7
Total	2,508	233.0



Brickell
REALTY GROUP

2071 NW 112th Avenue, Miami, FL 33172

www.brickell-realty.com/Barbados.html

Oral representation cannot be relied upon as correctly stating representations of the developer. Pictures of homes and condos may not reflect the final products which may vary. Dimensions, specifications, improvements, rendering, plans, land uses, materials, amenities, prices, and availability are subject to change at the developer's discretion without notice.

Stated dimensions are approximate and measured to the exterior boundaries of the exterior walls and the centerline of interior demising walls which in fact vary from the dimensions that would be determined by using the description and definition of the "Unit" set forth in the Declaration (which generally only includes the interior airspace between the perimeter walls and excludes interior structural components).

Barbados at *The Isles at Oasis*

The Sanibel

1-Story · 4 Bedrooms · 2 Baths
Great Room · Garage

	SQ FT	M ²
A/C	1,634	151.8
Garage	267	24.8
Covered Entry	45	4.2
Total	1,946	180.8



Brickell
REALTY GROUP

2071 NW 112th Avenue, Miami, FL 33172

www.brickell-realty.com/Barbados.html

Oral representation cannot be relied upon as correctly stating representations of the developer. Pictures of homes and condos may not reflect the final products which may vary. Dimensions, specifications, improvements, rendering, plans, land uses, materials, amenities, prices, and availability are subject to change at the developer's discretion without notice.

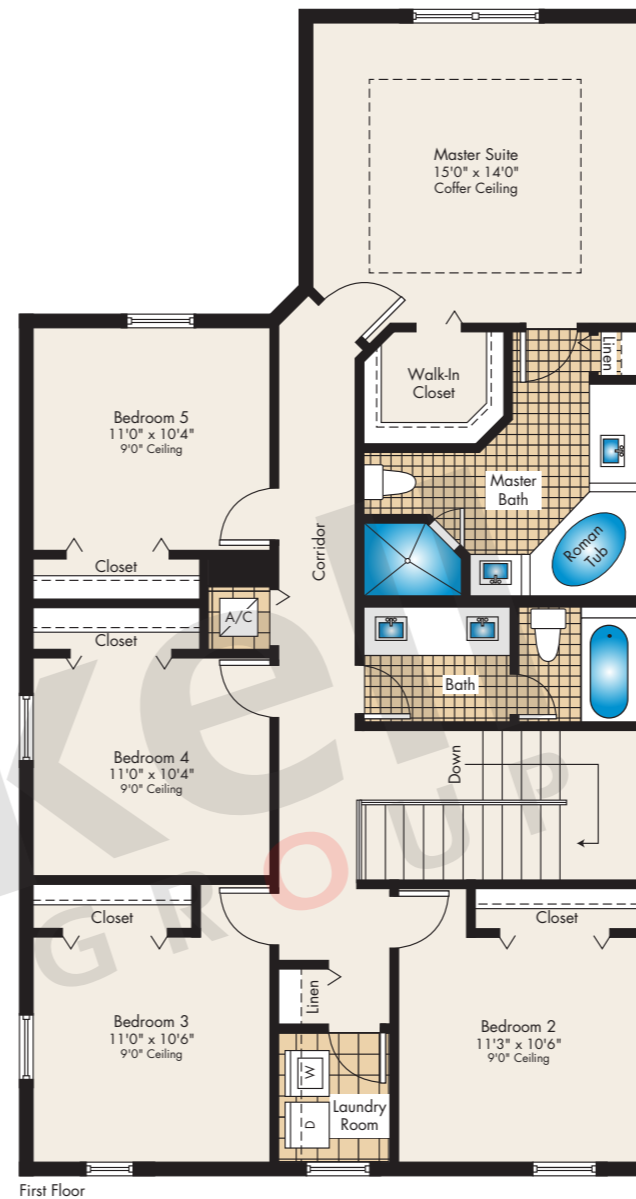
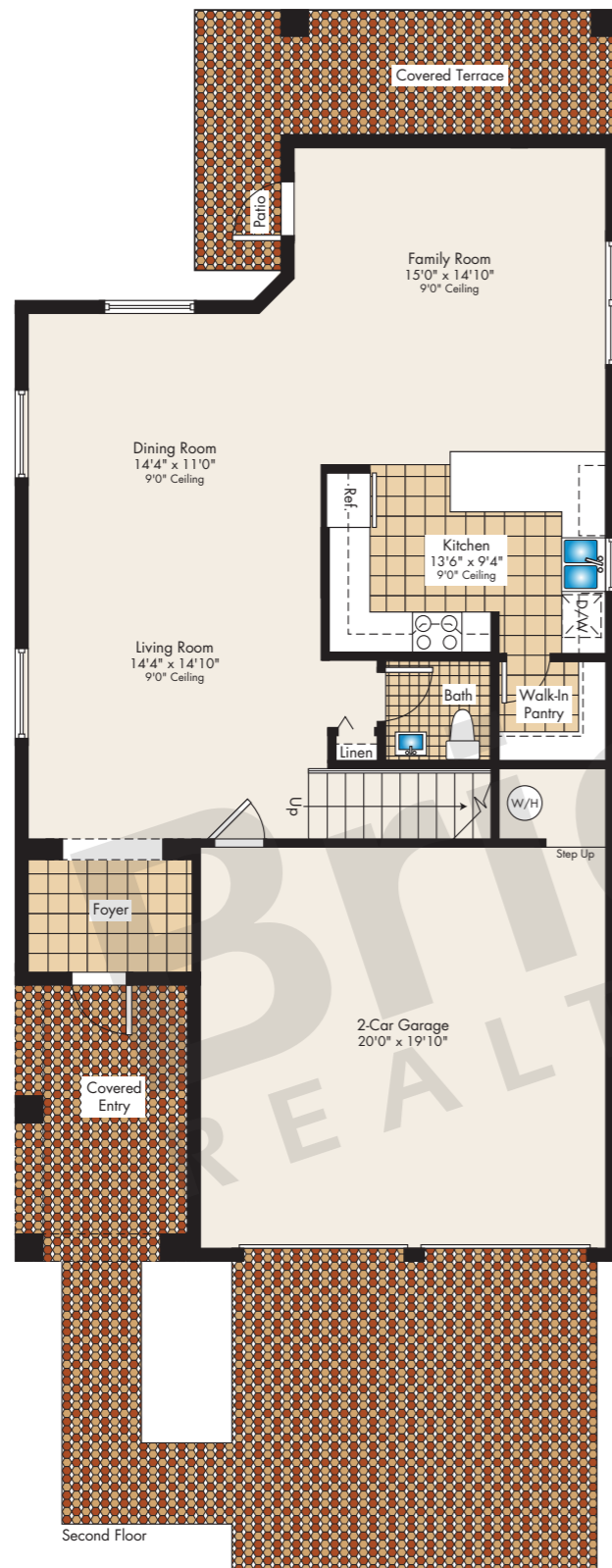
Stated dimensions are approximate and measured to the exterior boundaries of the exterior walls and the centerline of interior demising walls which in fact vary from the dimensions that would be determined by using the description and definition of the "Unit" set forth in the Declaration (which generally only includes the interior airspace between the perimeter walls and excludes interior structural components).

Barbados at *The Isles at Oasis*

The Starboard

2-Story · 5 Bedrooms · 2.5 Baths
Family Room · Covered Terrace
2-Car Garage

	SQ FT	M ²
A/C	2,435	226.2
Garage	455	42.3
Entry	116	10.8
Covered Terrace	103	9.6
Total	3,109	288.9



Brickell
REALTY GROUP

2071 NW 112th Avenue, Miami, FL 33172

www.brickell-realty.com/Barbados.html

Oral representation cannot be relied upon as correctly stating representations of the developer. Pictures of homes and condos may not reflect the final products which may vary. Dimensions, specifications, improvements, rendering, plans, land uses, materials, amenities, prices, and availability are subject to change at the developer's discretion without notice.

Stated dimensions are approximate and measured to the exterior boundaries of the exterior walls and the centerline of interior demising walls which in fact vary from the dimensions that would be determined by using the description and definition of the "Unit" set forth in the Declaration (which generally only includes the interior airspace between the perimeter walls and excludes interior structural components).

Barbados at *The Isles at Oasis*

The Windward

2-Story · 5 Bedrooms · 3 Baths
Family Room · 2-Car Garage



	SQ FT	M ²
A/C	2,805	260.6
Garage	498	46.3
Entry	65	6.0
Total	3,368	312.9

Brickell
REALTY GROUP

2071 NW 112th Avenue, Miami, FL 33172

www.brickell-realty.com/Barbados.html

Oral representation cannot be relied upon as correctly stating representations of the developer. Pictures of homes and condos may not reflect the final products which may vary. Dimensions, specifications, improvements, rendering, plans, land uses, materials, amenities, prices, and availability are subject to change at the developer's discretion without notice.

Stated dimensions are approximate and measured to the exterior boundaries of the exterior walls and the centerline of interior demising walls which in fact vary from the dimensions that would be determined by using the description and definition of the "Unit" set forth in the Declaration (which generally only includes the interior airspace between the perimeter walls and excludes interior structural components).