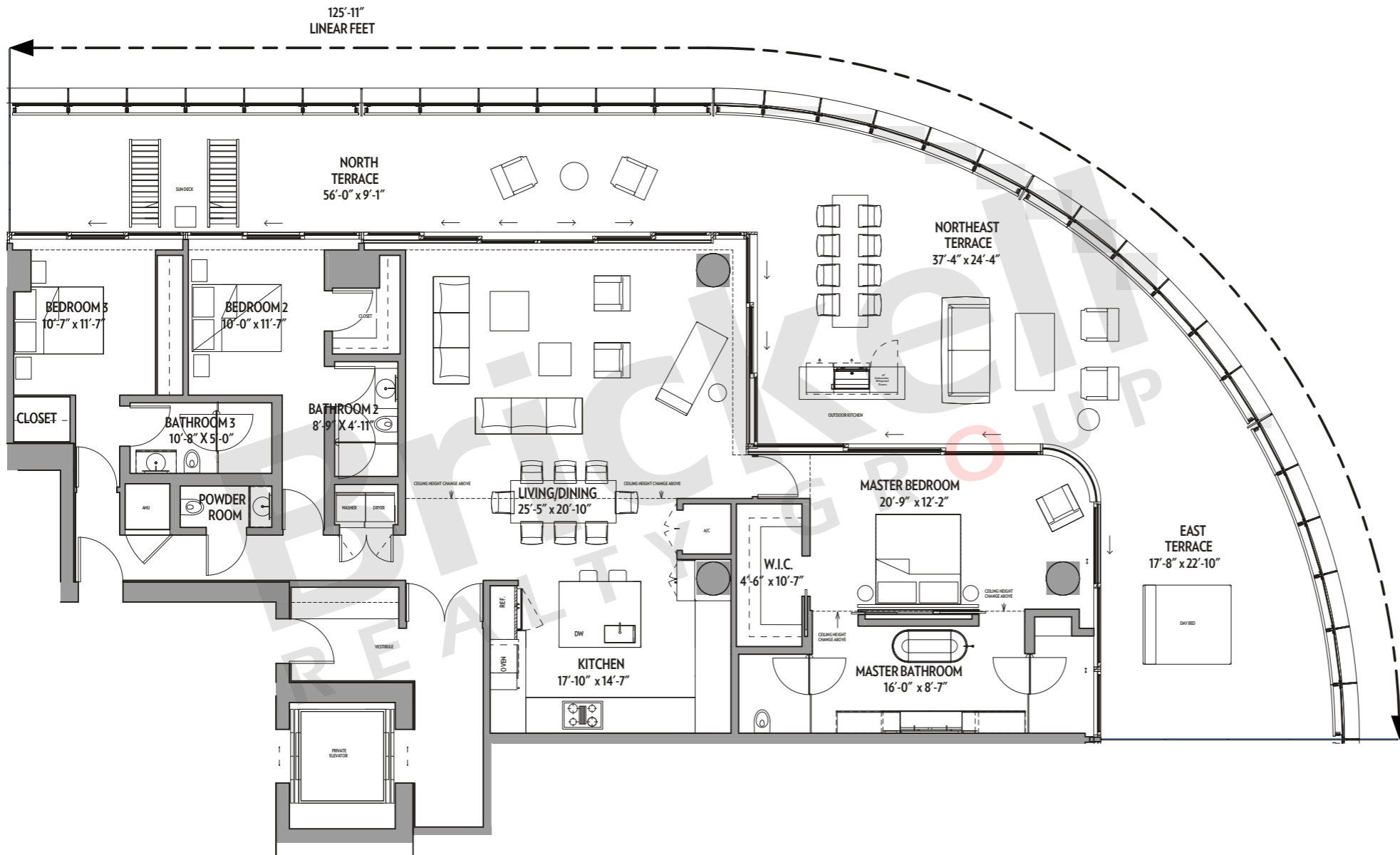


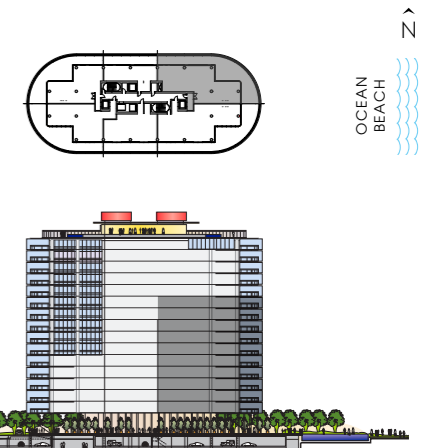
**Residence A**

Units 301-1201

3 Bedrooms · 3.5 Baths



	SQ FT	M <sup>2</sup>
Interior	2,421	224.9
Terrace	1,715	159.3
<b>Total</b>	<b>4,136</b>	<b>384.2</b>



**Brickell**  
REALTY GROUP

2071 NW 112th Avenue, Miami, FL 33172

[www.brickell-realty.com/EightySevenPark.html](http://www.brickell-realty.com/EightySevenPark.html)

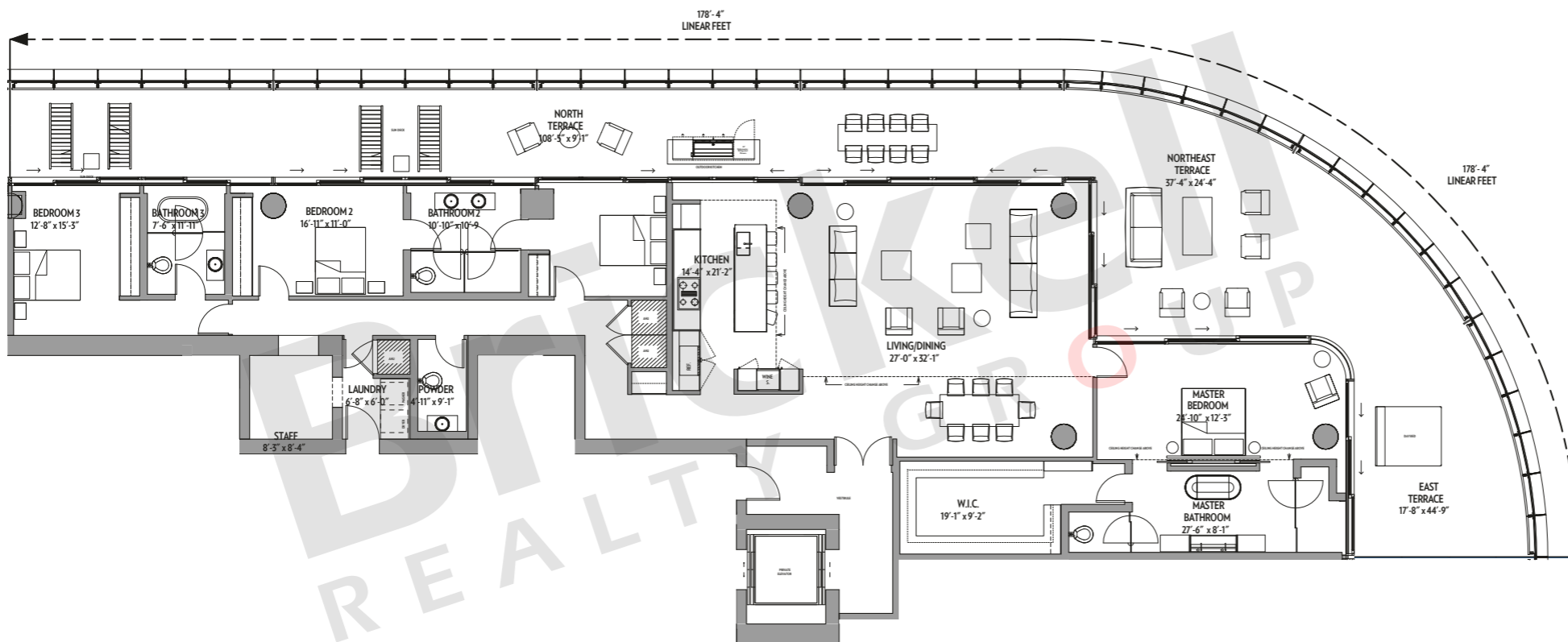
Oral representation cannot be relied upon as correctly stating representations of the developer. Pictures of homes and condos may not reflect the final products which may vary. Dimensions, specifications, improvements, rendering, plans, land uses, materials, amenities, prices, and availability are subject to change at the developer's discretion without notice.

Stated dimensions are approximate and measured to the exterior boundaries of the exterior walls and the centerline of interior demising walls which in fact vary from the dimensions that would be determined by using the description and definition of the "Unit" set forth in the Declaration (which generally only includes the interior airspace between the perimeter walls and excludes interior structural components).

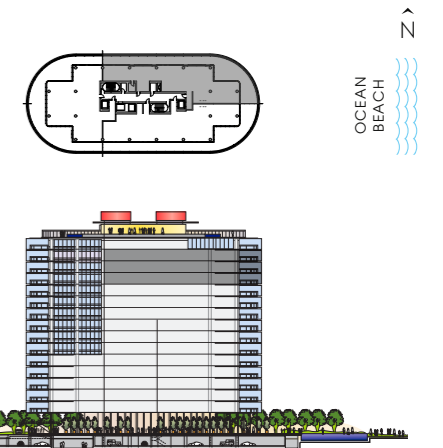
**Residence AC2**

Units 1501-1701

4 Bedrooms · 3.5 Baths



	SQ FT	M <sup>2</sup>
Interior	3,525	327.5
Terrace	2,280	211.8
<b>Total</b>	<b>5,805</b>	<b>539.3</b>



**Brickell**  
REALTY GROUP

2071 NW 112th Avenue, Miami, FL 33172

[www.brickell-realty.com/EightySevenPark.html](http://www.brickell-realty.com/EightySevenPark.html)

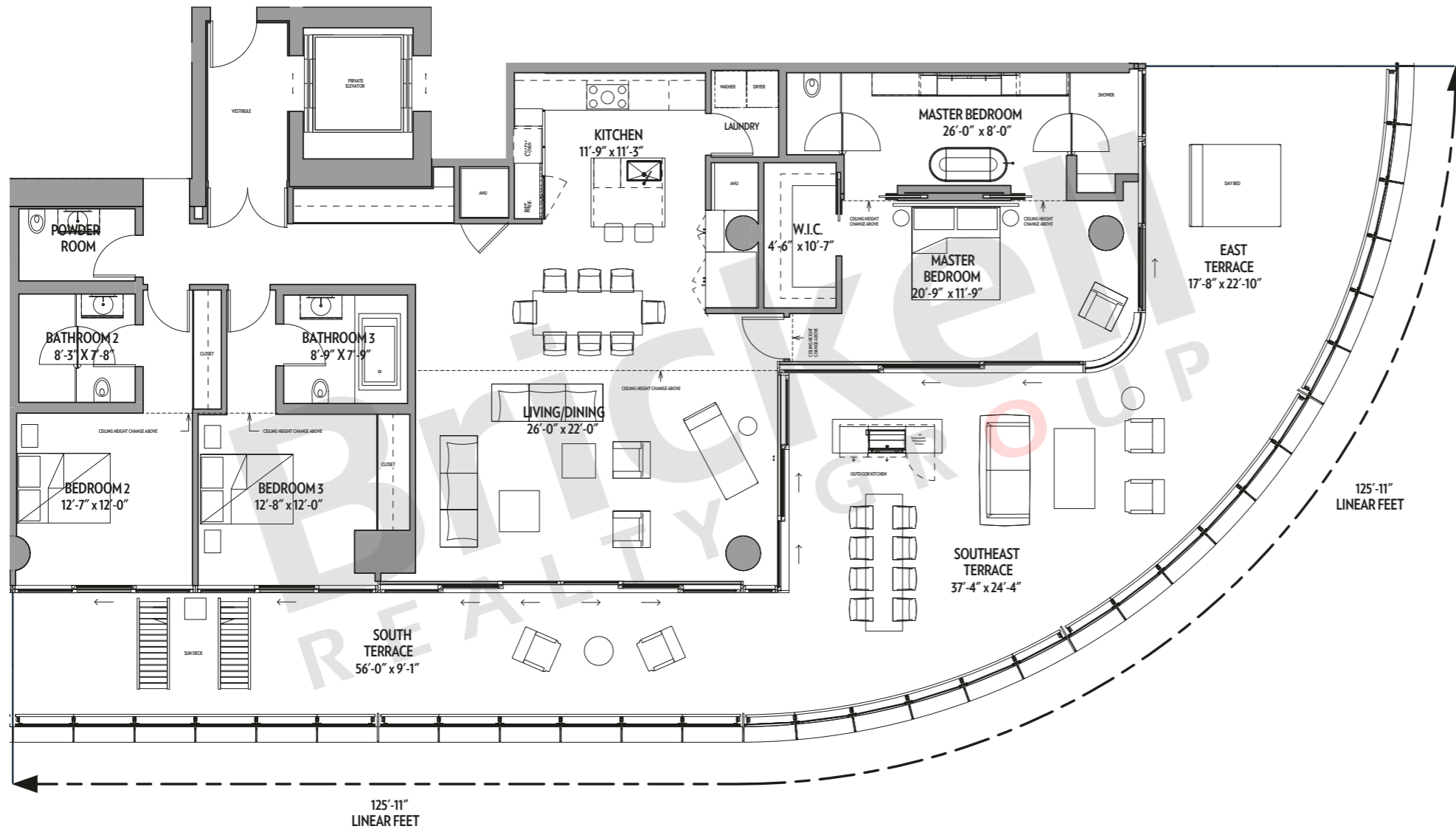
Oral representation cannot be relied upon as correctly stating representations of the developer. Pictures of homes and condos may not reflect the final products which may vary. Dimensions, specifications, improvements, rendering, plans, land uses, materials, amenities, prices, and availability are subject to change at the developer's discretion without notice.

Stated dimensions are approximate and measured to the exterior boundaries of the exterior walls and the centerline of interior demising walls which in fact vary from the dimensions that would be determined by using the description and definition of the "Unit" set forth in the Declaration (which generally only includes the interior airspace between the perimeter walls and excludes interior structural components).

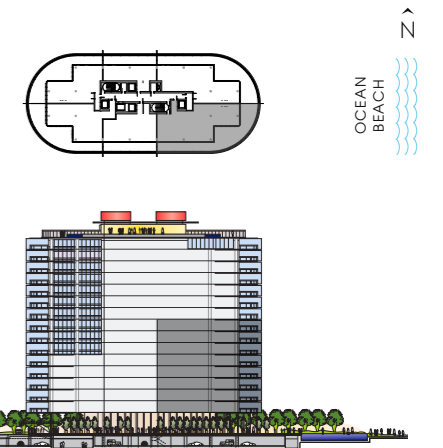
**Residence B**

Units 302-1002

3 Bedrooms · 3.5 Baths



	SQ FT	M <sup>2</sup>
Interior	2,467	229.2
Terrace	1,715	159.3
<b>Total</b>	<b>4,182</b>	<b>388.5</b>



**Brickell**  
REALTY GROUP

2071 NW 112th Avenue, Miami, FL 33172

[www.brickell-realty.com/EightySevenPark.html](http://www.brickell-realty.com/EightySevenPark.html)

Oral representation cannot be relied upon as correctly stating representations of the developer. Pictures of homes and condos may not reflect the final products which may vary. Dimensions, specifications, improvements, rendering, plans, land uses, materials, amenities, prices, and availability are subject to change at the developer's discretion without notice.

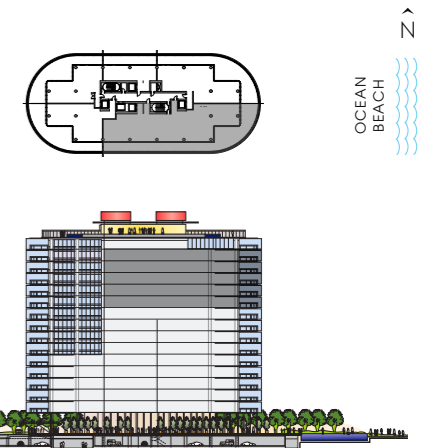
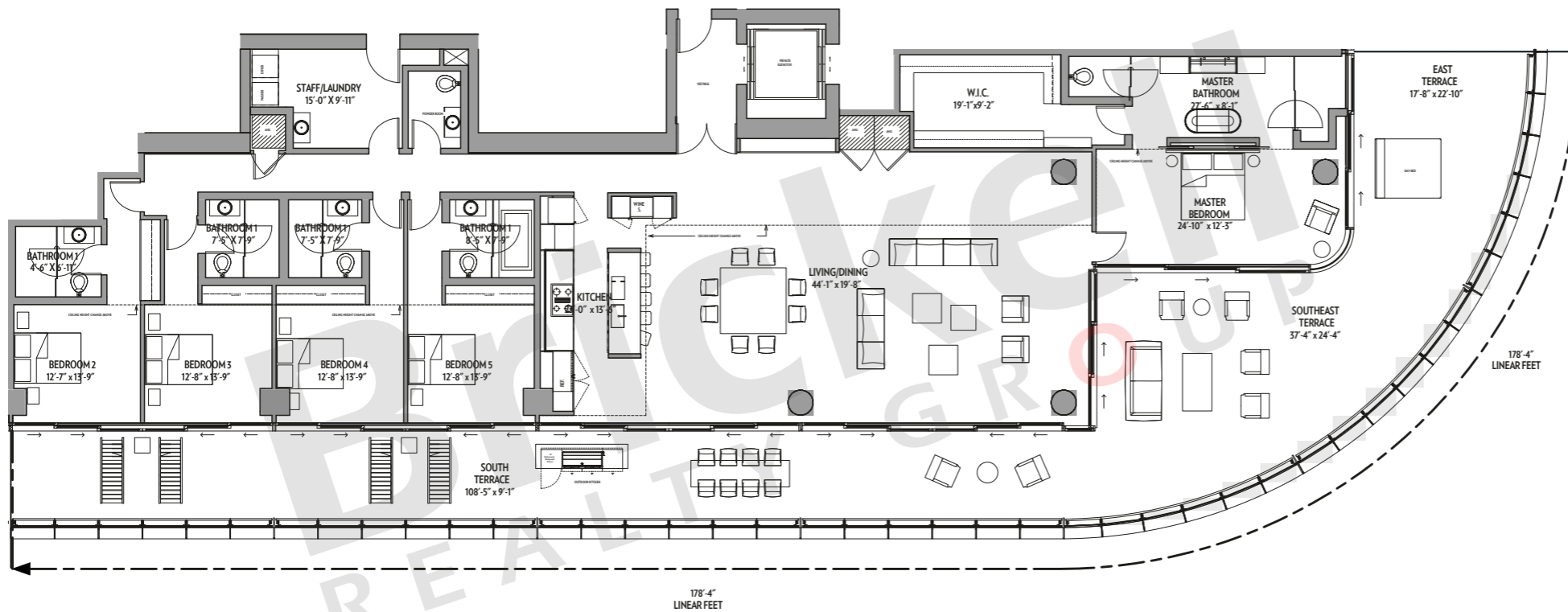
Stated dimensions are approximate and measured to the exterior boundaries of the exterior walls and the centerline of interior demising walls which in fact vary from the dimensions that would be determined by using the description and definition of the "Unit" set forth in the Declaration (which generally only includes the interior airspace between the perimeter walls and excludes interior structural components).

**Residence BD2**

Units 1202-1702

5 Bedrooms · 5.5 Baths

	SQ FT	M <sup>2</sup>
Interior	4,140	384.6
Terrace	2,280	211.8
<b>Total</b>	<b>6,420</b>	<b>596.4</b>



**Brickell**  
REALTY GROUP

2071 NW 112th Avenue, Miami, FL 33172

[www.brickell-realty.com/EightySevenPark.html](http://www.brickell-realty.com/EightySevenPark.html)

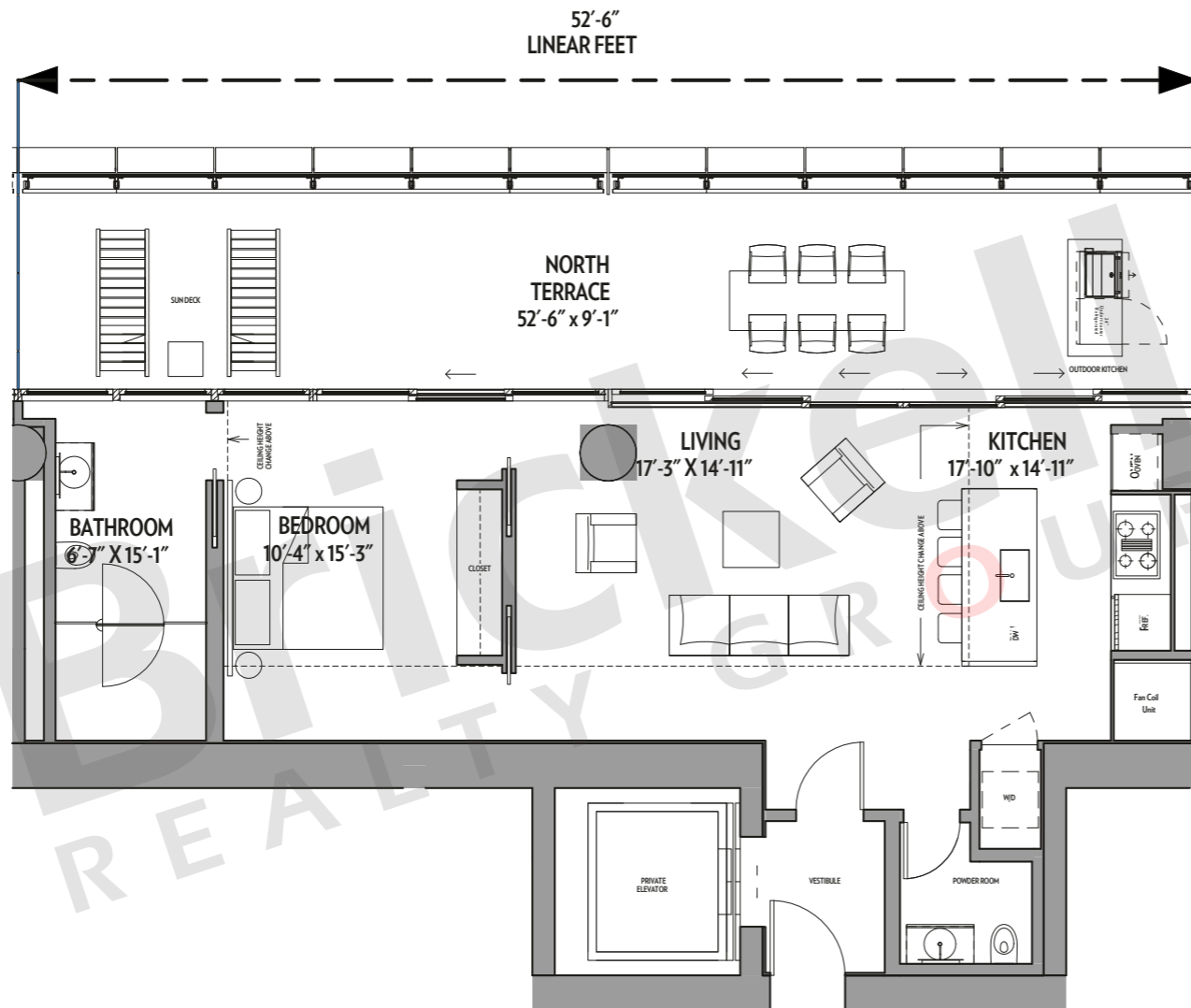
Oral representation cannot be relied upon as correctly stating representations of the developer. Pictures of homes and condos may not reflect the final products which may vary. Dimensions, specifications, improvements, rendering, plans, land uses, materials, amenities, prices, and availability are subject to change at the developer's discretion without notice.

Stated dimensions are approximate and measured to the exterior boundaries of the exterior walls and the centerline of interior demising walls which in fact vary from the dimensions that would be determined by using the description and definition of the "Unit" set forth in the Declaration (which generally only includes the interior airspace between the perimeter walls and excludes interior structural components).

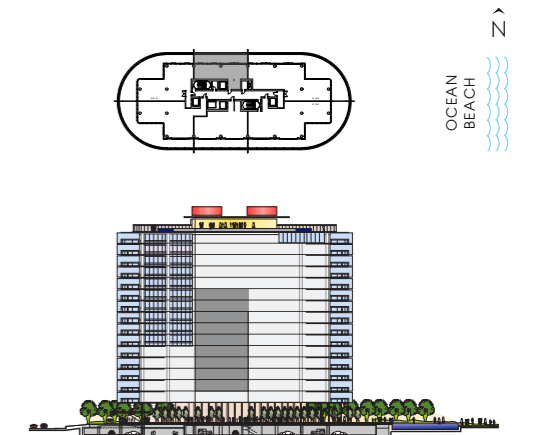
**Residence C**

Units 403-1203

1 Bedrooms · 1.5 Baths



	SQ FT	M <sup>2</sup>
Interior	1,018	94.6
Terrace	564	52.4
<b>Total</b>	<b>1,582</b>	<b>147.0</b>



**Brickell**  
REALTY GROUP

2071 NW 112th Avenue, Miami, FL 33172

[www.brickell-realty.com/EightySevenPark.html](http://www.brickell-realty.com/EightySevenPark.html)

Oral representation cannot be relied upon as correctly stating representations of the developer. Pictures of homes and condos may not reflect the final products which may vary. Dimensions, specifications, improvements, rendering, plans, land uses, materials, amenities, prices, and availability are subject to change at the developer's discretion without notice.

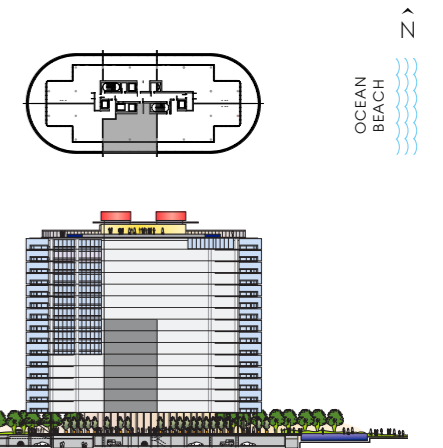
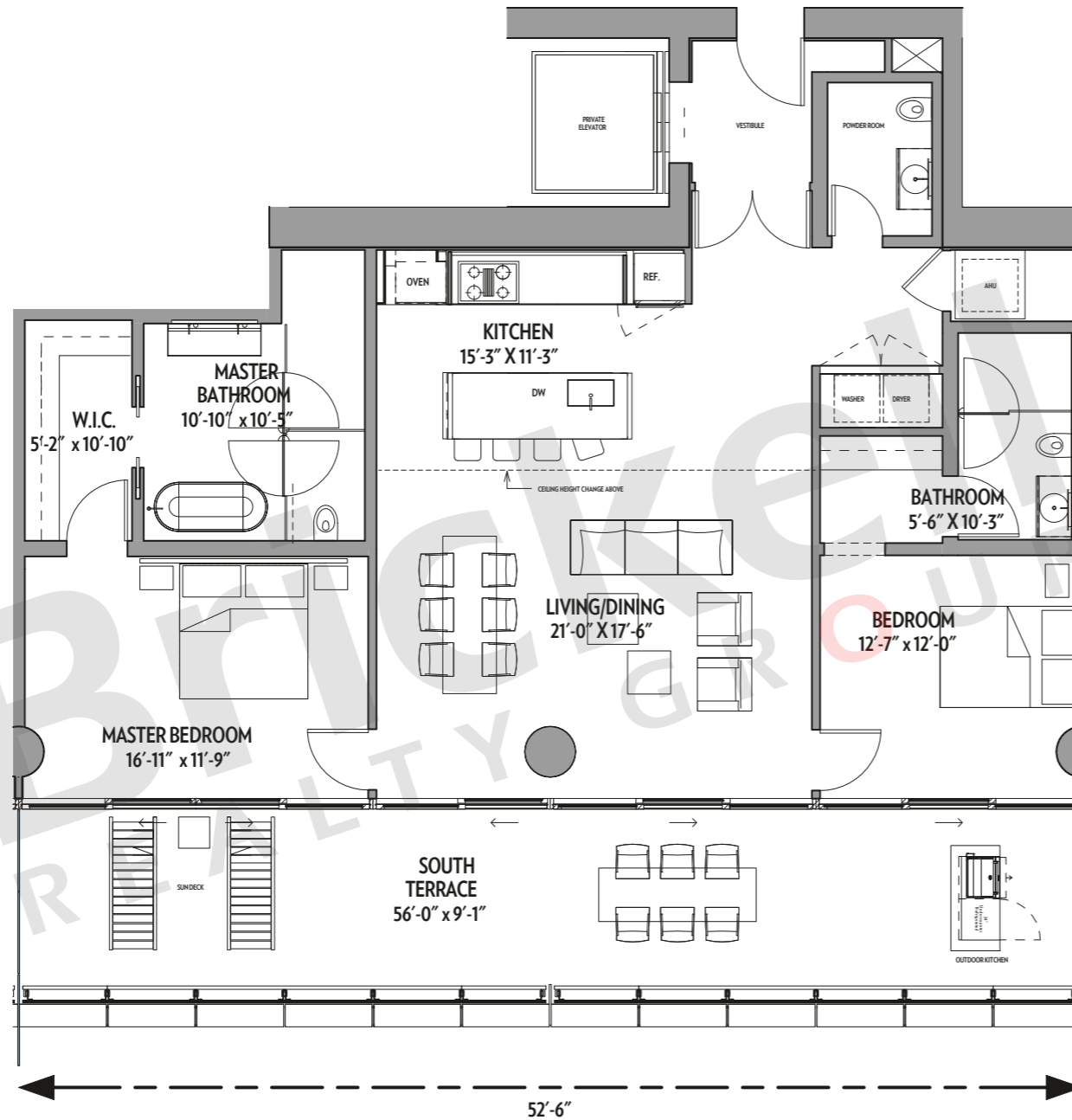
Stated dimensions are approximate and measured to the exterior boundaries of the exterior walls and the centerline of interior demising walls which in fact vary from the dimensions that would be determined by using the description and definition of the "Unit" set forth in the Declaration (which generally only includes the interior airspace between the perimeter walls and excludes interior structural components).

**Residence D**

Units 304-1004

2 Bedrooms · 2.5 Baths

	SQ FT	M <sup>2</sup>
Interior	1,594	148.1
Terrace	578	53.7
<b>Total</b>	<b>2,172</b>	<b>201.8</b>



**Brickell**  
REALTY GROUP

2071 NW 112th Avenue, Miami, FL 33172

[www.brickell-realty.com/EightySevenPark.html](http://www.brickell-realty.com/EightySevenPark.html)

Oral representation cannot be relied upon as correctly stating representations of the developer. Pictures of homes and condos may not reflect the final products which may vary. Dimensions, specifications, improvements, rendering, plans, land uses, materials, amenities, prices, and availability are subject to change at the developer's discretion without notice.

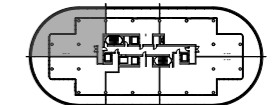
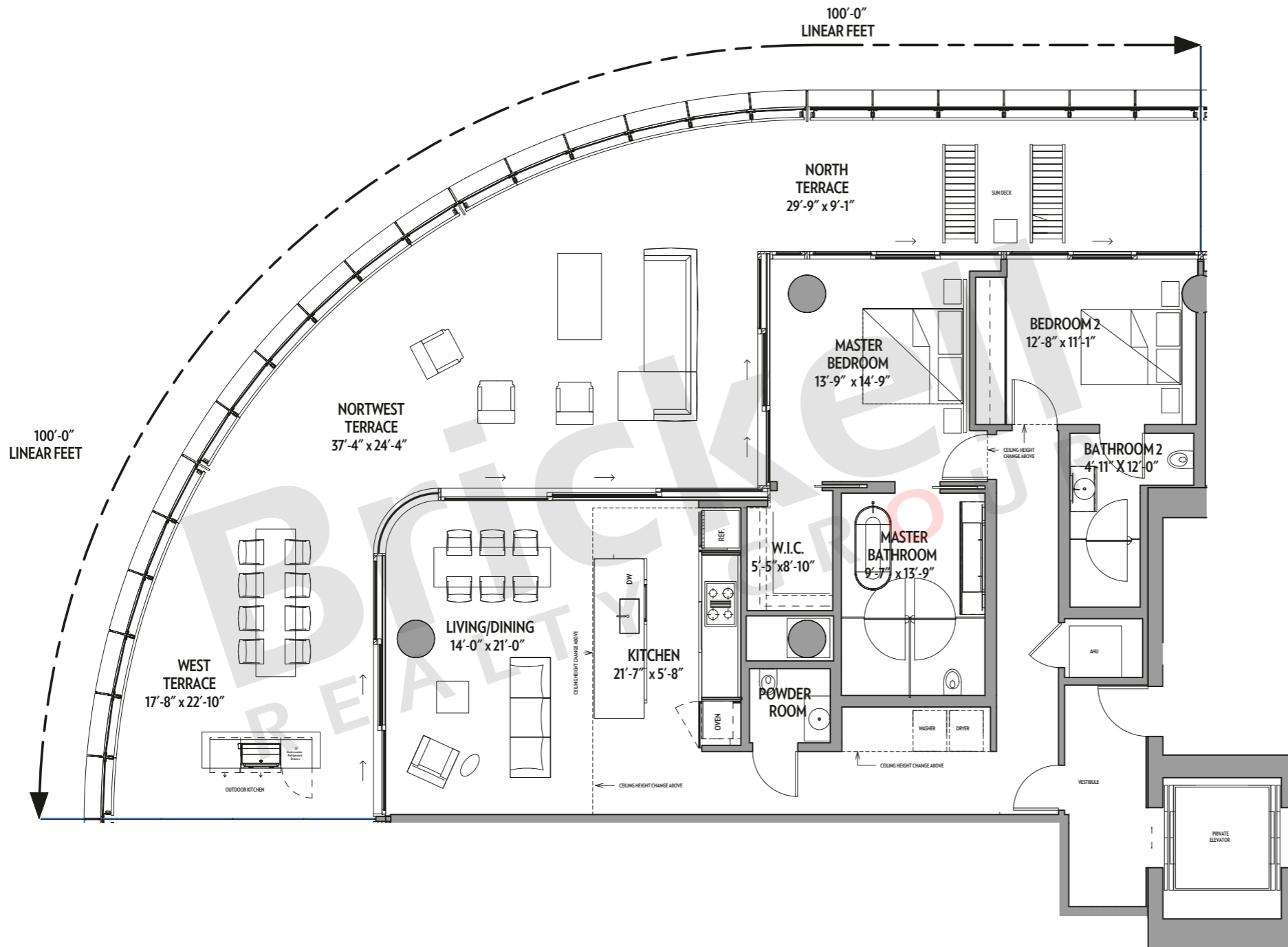
Stated dimensions are approximate and measured to the exterior boundaries of the exterior walls and the centerline of interior demising walls which in fact vary from the dimensions that would be determined by using the description and definition of the "Unit" set forth in the Declaration (which generally only includes the interior airspace between the perimeter walls and excludes interior structural components).

**Residence E**

Units 405-1205t

2 Bedrooms · 2.5 Baths

	SQ FT	M <sup>2</sup>
Interior	1,654	153.7
Terrace	1,433	133.1
<b>Total</b>	<b>3,087</b>	<b>286.8</b>



OCEAN BEACH  
N

**Brickell**  
REALTY GROUP

2071 NW 112th Avenue, Miami, FL 33172

[www.brickell-realty.com/EightySevenPark.html](http://www.brickell-realty.com/EightySevenPark.html)

Oral representation cannot be relied upon as correctly stating representations of the developer. Pictures of homes and condos may not reflect the final products which may vary. Dimensions, specifications, improvements, rendering, plans, land uses, materials, amenities, prices, and availability are subject to change at the developer's discretion without notice.

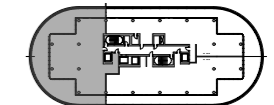
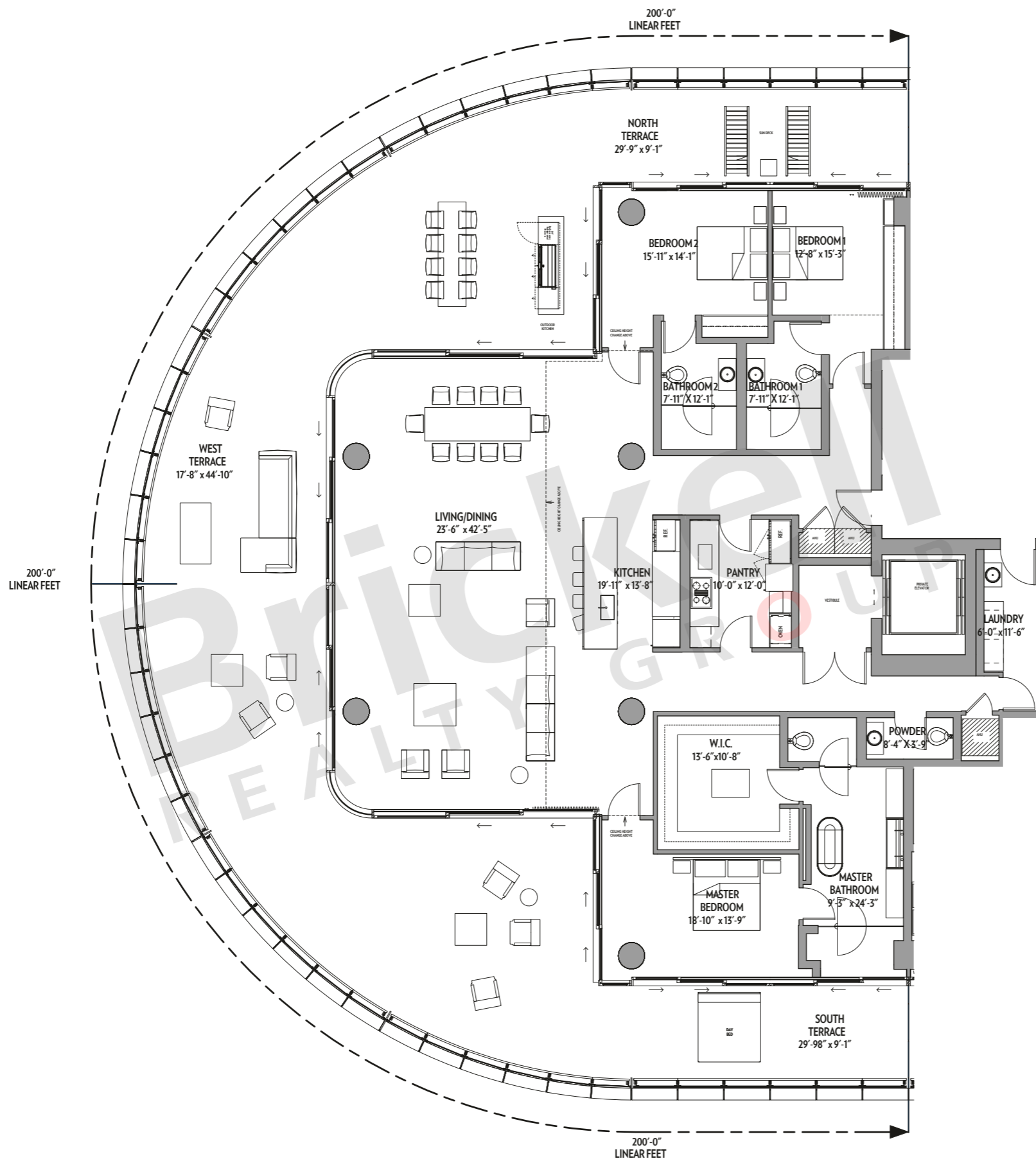
Stated dimensions are approximate and measured to the exterior boundaries of the exterior walls and the centerline of interior demising walls which in fact vary from the dimensions that would be determined by using the description and definition of the "Unit" set forth in the Declaration (which generally only includes the interior airspace between the perimeter walls and excludes interior structural components).

**Residence EF**

Units 1405-1705

3 Bedrooms · 3.5 Baths

	SQ FT	M <sup>2</sup>
Interior	3,460	321.4
Terrace	2,867	266.3
<b>Total</b>	<b>6,327</b>	<b>587.7</b>



**Brickell**  
REALTY GROUP

2071 NW 112th Avenue, Miami, FL 33172

[www.brickell-realty.com/EightySevenPark.html](http://www.brickell-realty.com/EightySevenPark.html)

Oral representation cannot be relied upon as correctly stating representations of the developer. Pictures of homes and condos may not reflect the final products which may vary. Dimensions, specifications, improvements, rendering, plans, land uses, materials, amenities, prices, and availability are subject to change at the developer's discretion without notice.

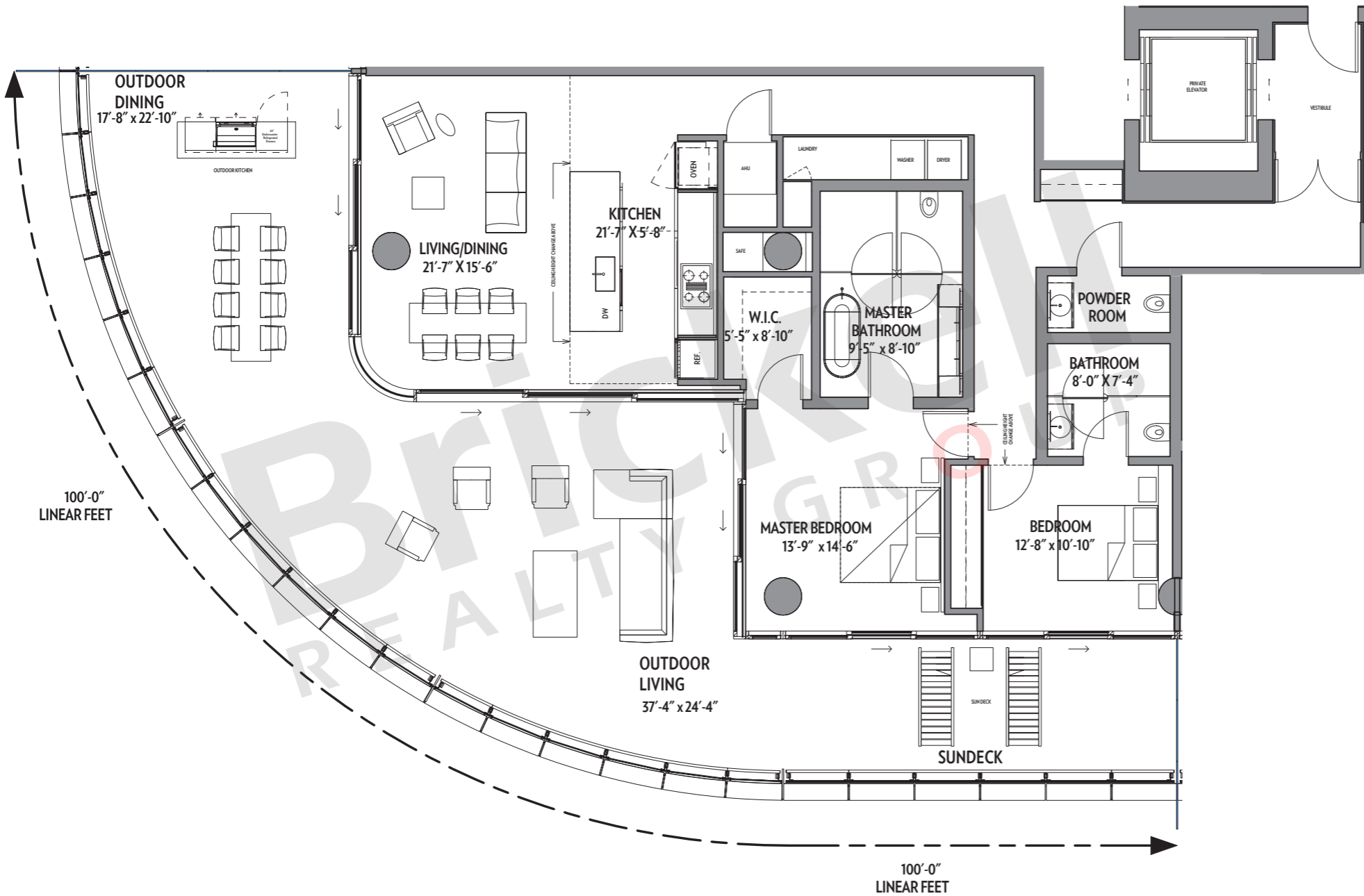
Stated dimensions are approximate and measured to the exterior boundaries of the exterior walls and the centerline of interior demising walls which in fact vary from the dimensions that would be determined by using the description and definition of the "Unit" set forth in the Declaration (which generally only includes the interior airspace between the perimeter walls and excludes interior structural components).



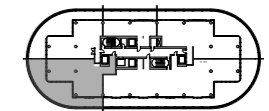
**Residence F1**

Units 306-1006

2 Bedrooms · 2.5 Baths



	SQ FT	M <sup>2</sup>
Interior	1,773	164.7
Terrace	1,433	133.1
<b>Total</b>	<b>3,206</b>	<b>297.8</b>



**Brickell**  
REALTY GROUP

2071 NW 112th Avenue, Miami, FL 33172

[www.brickell-realty.com/EightySevenPark.html](http://www.brickell-realty.com/EightySevenPark.html)

Oral representation cannot be relied upon as correctly stating representations of the developer. Pictures of homes and condos may not reflect the final products which may vary. Dimensions, specifications, improvements, rendering, plans, land uses, materials, amenities, prices, and availability are subject to change at the developer's discretion without notice.

Stated dimensions are approximate and measured to the exterior boundaries of the exterior walls and the centerline of interior demising walls which in fact vary from the dimensions that would be determined by using the description and definition of the "Unit" set forth in the Declaration (which generally only includes the interior airspace between the perimeter walls and excludes interior structural components).