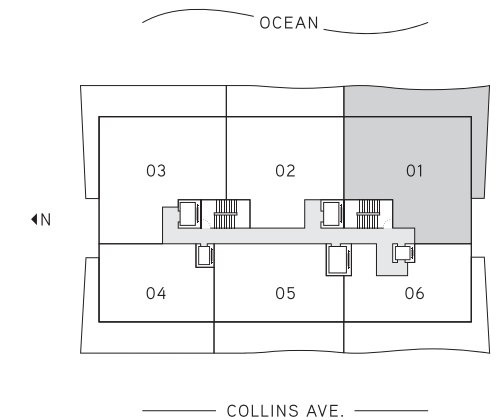
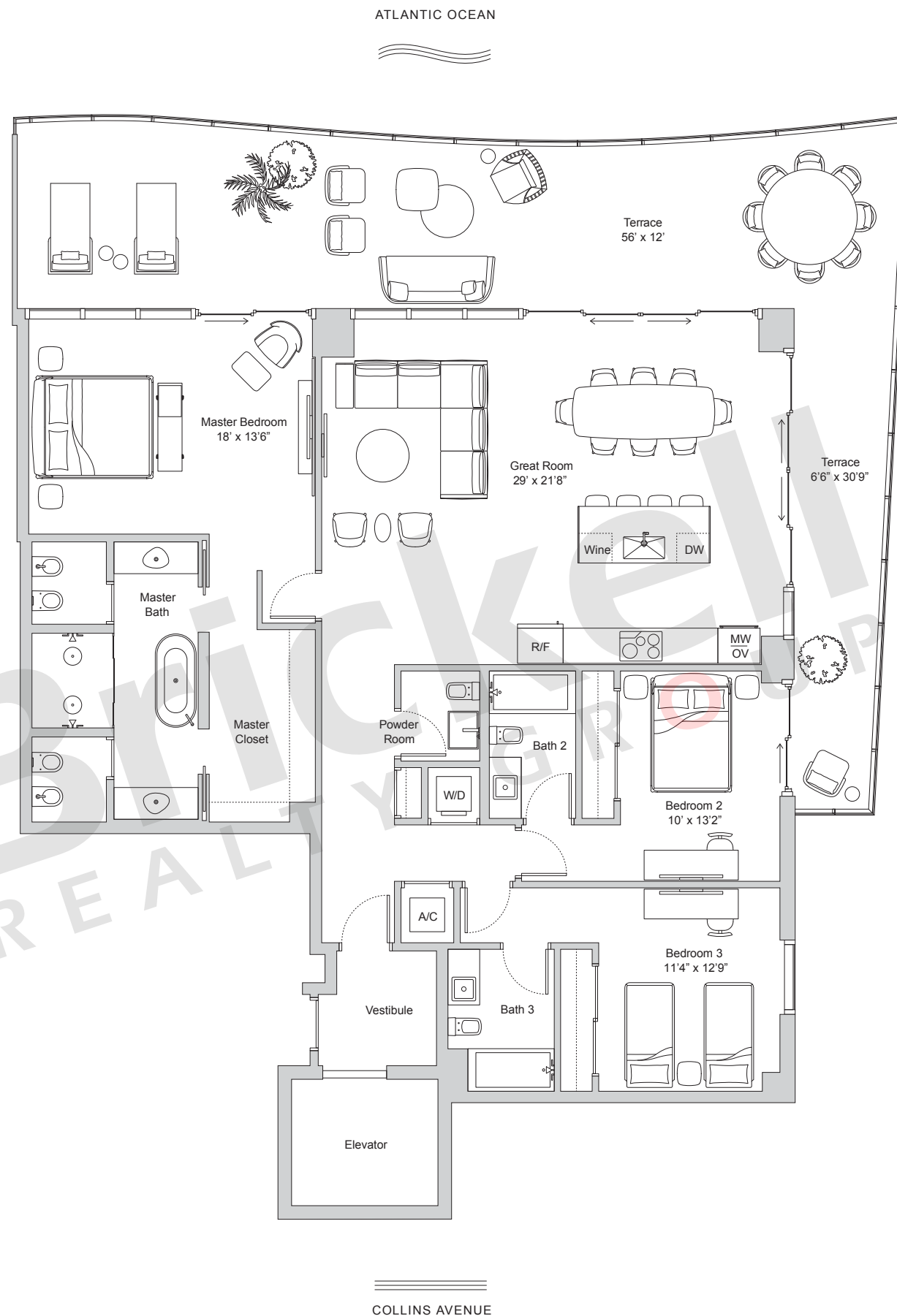


## Residence 01

Floors 4-14

3 Bedrooms · 3.5 Baths

	SQ FT	M <sup>2</sup>
Interior	2,104	195.5
Terrace	801	74.4
<b>Total</b>	<b>2,905</b>	<b>269.9</b>



**Brickell**  
REALTY GROUP

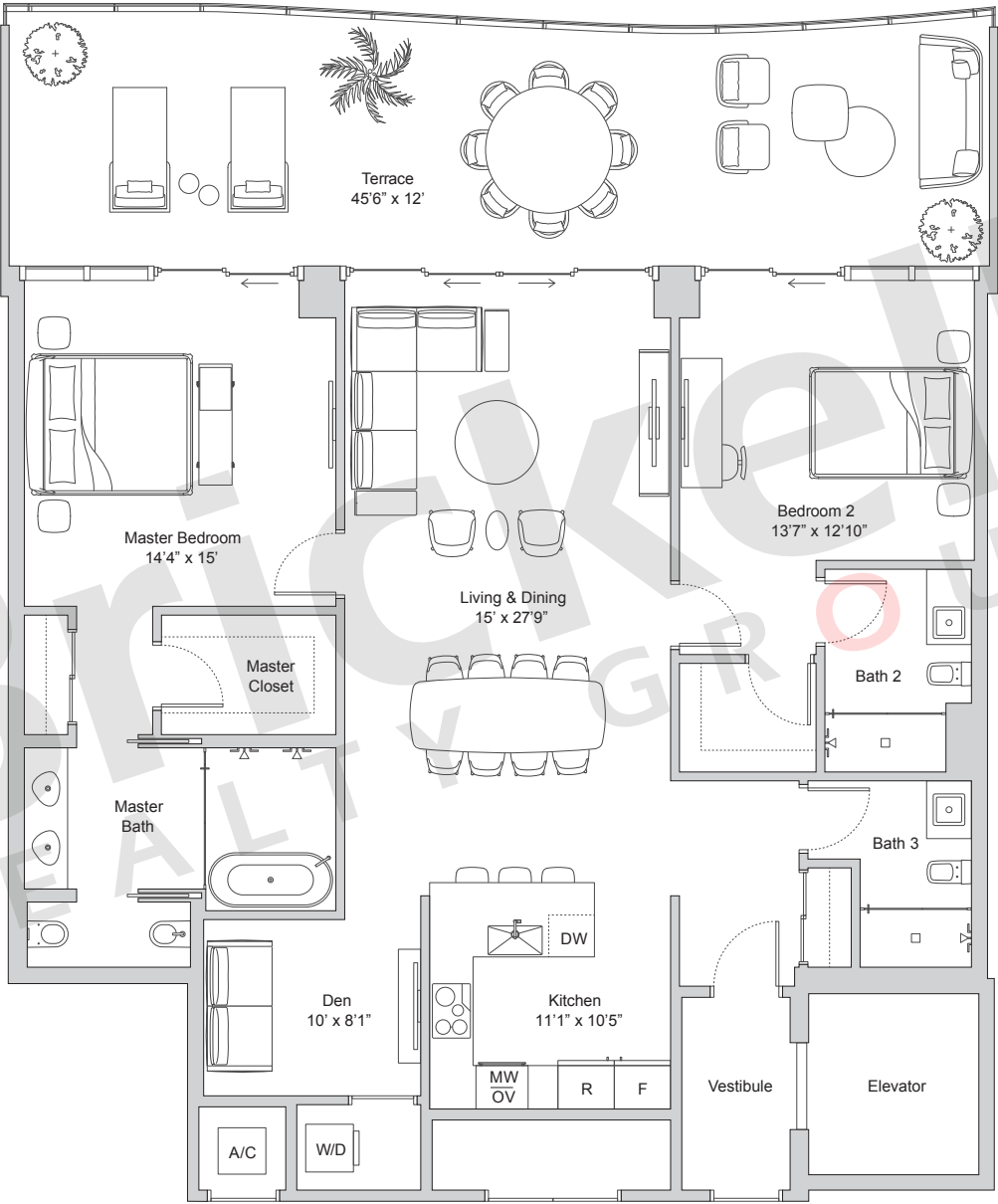
2071 NW 112th Avenue, Miami, FL 33172

[www.brickell-realty.com/57Ocean.html](http://www.brickell-realty.com/57Ocean.html)

Oral representation cannot be relied upon as correctly stating representations of the developer. Pictures of homes and condos may not reflect the final products which may vary. Dimensions, specifications, improvements, rendering, plans, land uses, materials, amenities, prices, and availability are subject to change at the developer's discretion without notice.

Stated dimensions are approximate and measured to the exterior boundaries of the exterior walls and the centerline of interior demising walls which in fact vary from the dimensions that would be determined by using the description and definition of the "Unit" set forth in the Declaration (which generally only includes the interior airspace between the perimeter walls and excludes interior structural components).

ATLANTIC OCEAN



COLLINS AVENUE

# 57 OCEAN

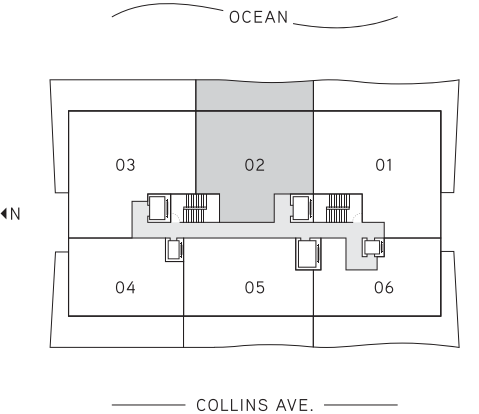
MIAMI BEACH

## Residence 02

Floors 3-18

2 Bedrooms · 3 Baths · Den

	SQ FT	M <sup>2</sup>
Interior	1,728	160.5
Terrace	520	48.3
Total	2,248	208.8



## Brickell

REALTY GROUP

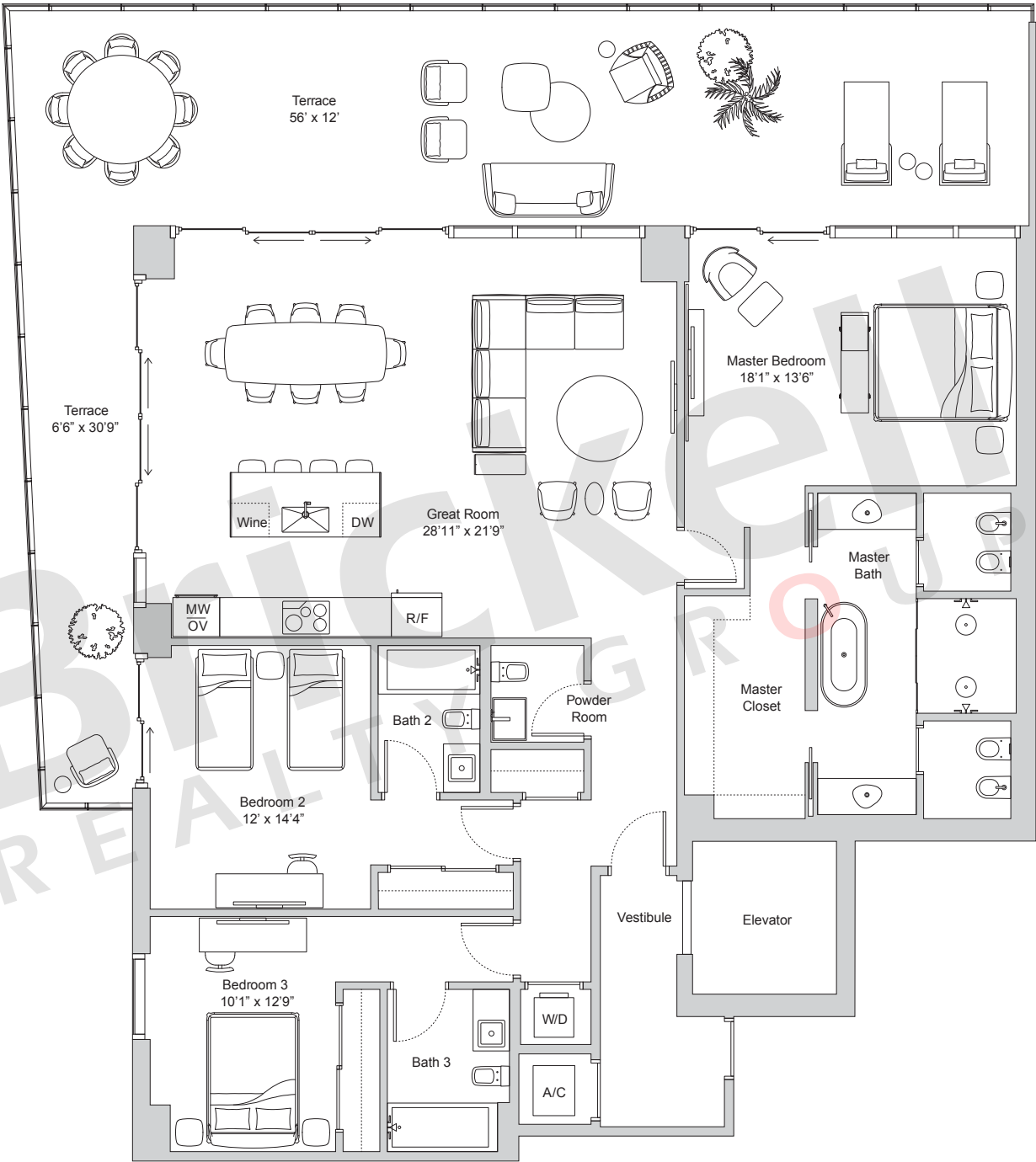
2071 NW 112th Avenue, Miami, FL 33172

[www.brickell-realty.com/57Ocean.html](http://www.brickell-realty.com/57Ocean.html)

Oral representation cannot be relied upon as correctly stating representations of the developer. Pictures of homes and condos may not reflect the final products which may vary. Dimensions, specifications, improvements, rendering, plans, land uses, materials, amenities, prices, and availability are subject to change at the developer's discretion without notice.

Stated dimensions are approximate and measured to the exterior boundaries of the exterior walls and the centerline of interior demising walls which in fact vary from the dimensions that would be determined by using the description and definition of the "Unit" set forth in the Declaration (which generally only includes the interior airspace between the perimeter walls and excludes interior structural components).

ATLANTIC OCEAN



COLLINS AVENUE

# 57 OCEAN

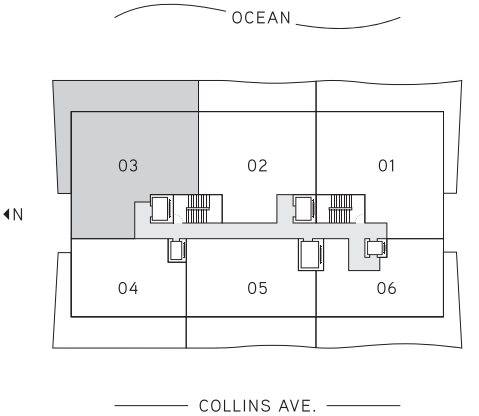
MIAMI BEACH

## Residence 03

Floors 4-14

3 Bedrooms · 3.5 Baths

	SQ FT	M <sup>2</sup>
Interior	2,153	200.0
Terrace	846	78.6
Total	2,999	278.6



## Brickell

REALTY GROUP

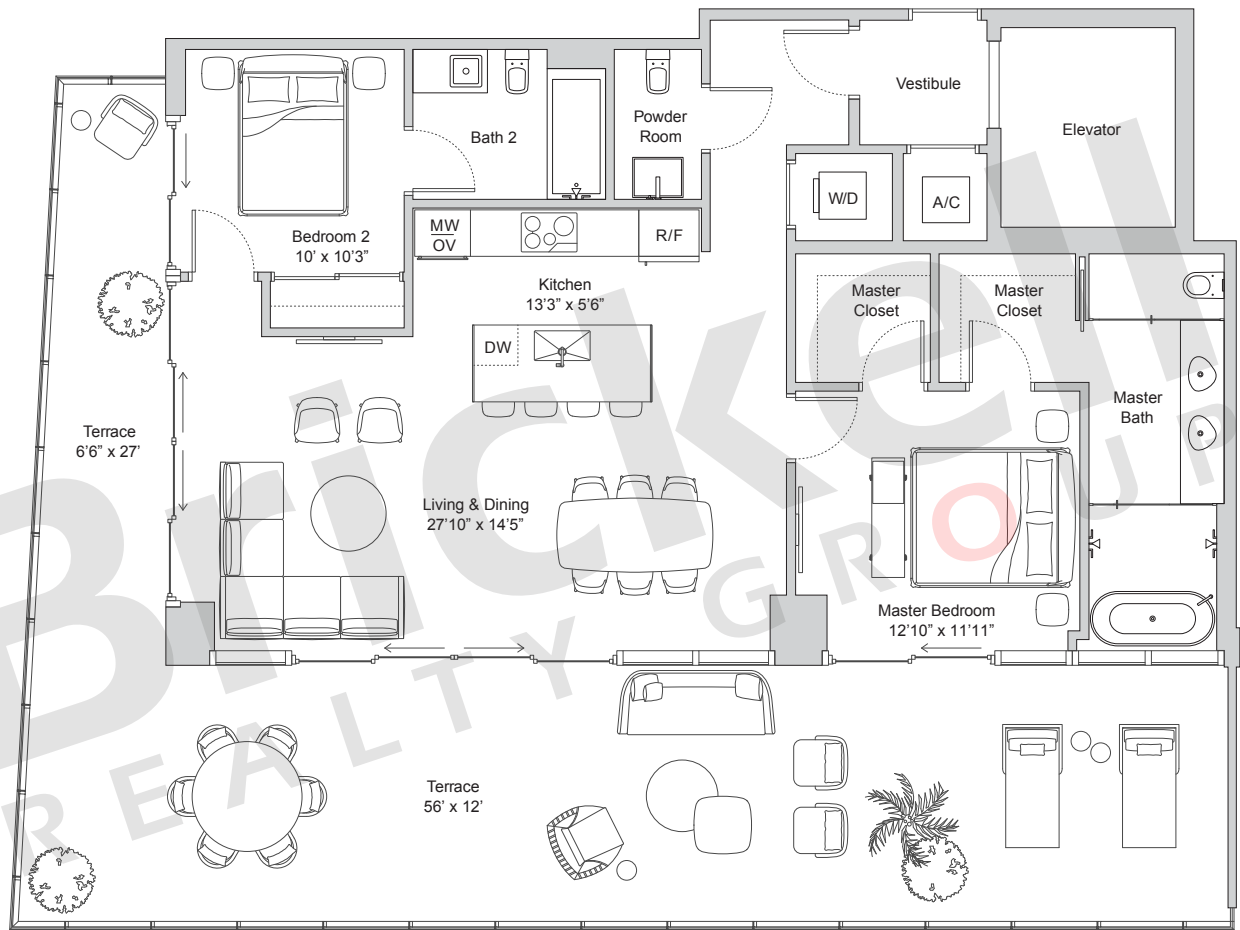
2071 NW 112th Avenue, Miami, FL 33172

[www.brickell-realty.com/57Ocean.html](http://www.brickell-realty.com/57Ocean.html)

Oral representation cannot be relied upon as correctly stating representations of the developer. Pictures of homes and condos may not reflect the final products which may vary. Dimensions, specifications, improvements, rendering, plans, land uses, materials, amenities, prices, and availability are subject to change at the developer's discretion without notice.

Stated dimensions are approximate and measured to the exterior boundaries of the exterior walls and the centerline of interior demising walls which in fact vary from the dimensions that would be determined by using the description and definition of the "Unit" set forth in the Declaration (which generally only includes the interior airspace between the perimeter walls and excludes interior structural components).

ATLANTIC OCEAN



COLLINS AVENUE



# 57 OCEAN

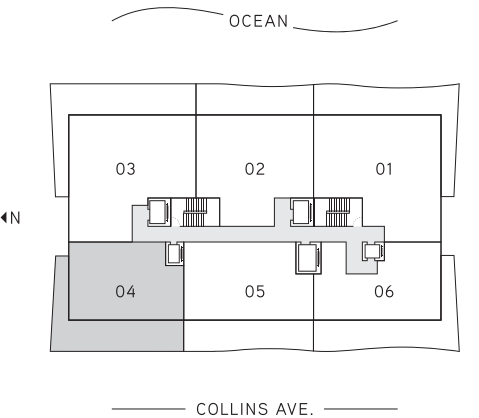
MIAMI BEACH

## Residence 04

Floors 4-14

2 Bedrooms · 2.5 Baths

	SQ FT	M <sup>2</sup>
Interior	1,321	122.7
Terrace	822	76.4
Total	2,143	199.1



## Brickell

REALTY GROUP

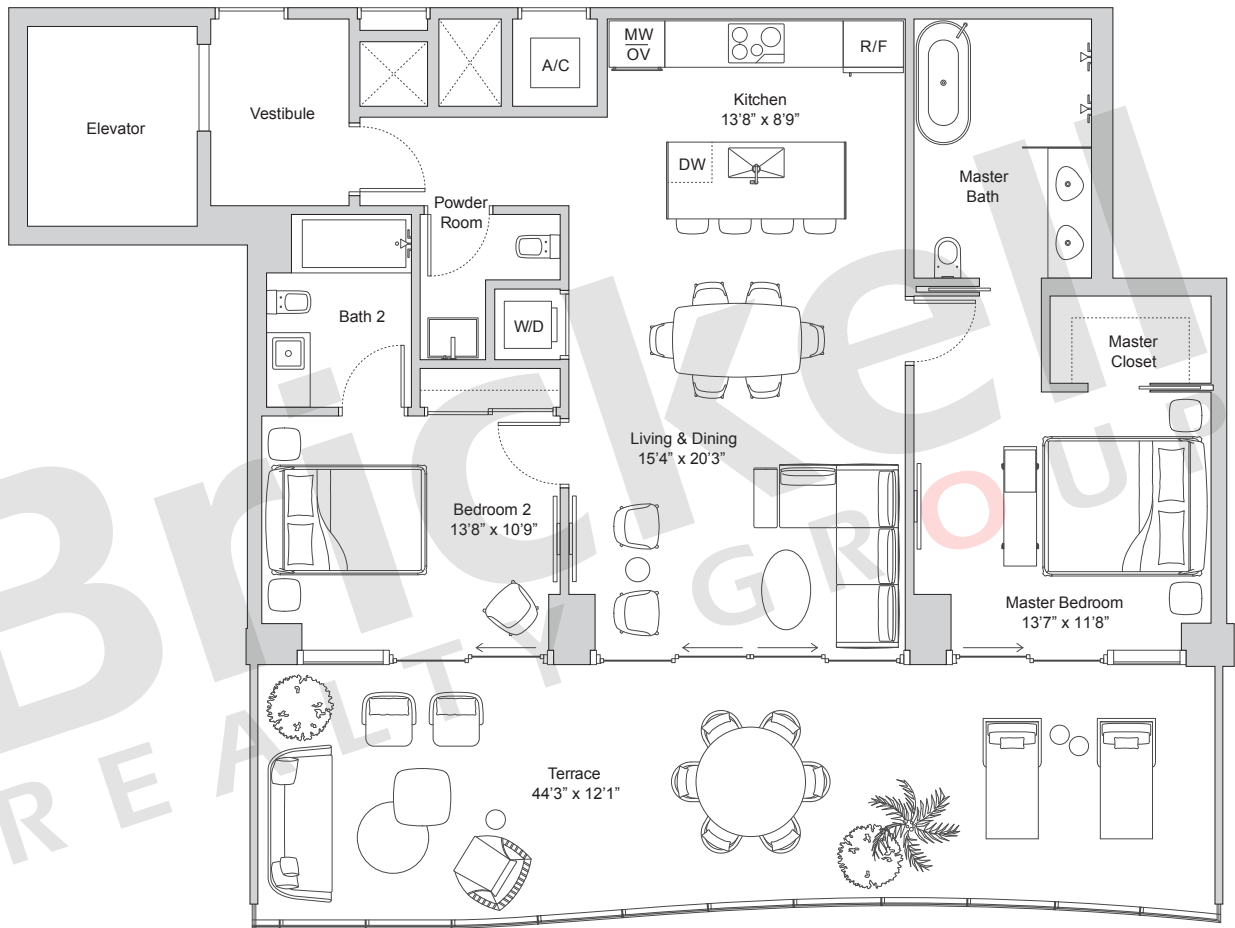
2071 NW 112th Avenue, Miami, FL 33172

[www.brickell-realty.com/57Ocean.html](http://www.brickell-realty.com/57Ocean.html)

Oral representation cannot be relied upon as correctly stating representations of the developer. Pictures of homes and condos may not reflect the final products which may vary. Dimensions, specifications, improvements, rendering, plans, land uses, materials, amenities, prices, and availability are subject to change at the developer's discretion without notice.

Stated dimensions are approximate and measured to the exterior boundaries of the exterior walls and the centerline of interior demising walls which in fact vary from the dimensions that would be determined by using the description and definition of the "Unit" set forth in the Declaration (which generally only includes the interior airspace between the perimeter walls and excludes interior structural components).

ATLANTIC OCEAN



COLLINS AVENUE

# 57 OCEAN

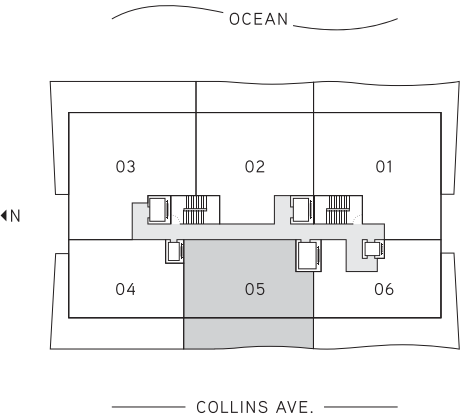
MIAMI BEACH

## Residence 05

Floors 4-18

2 Bedrooms · 2.5 Baths

	SQ FT	M <sup>2</sup>
Interior	1,245	115.7
Terrace	509	47.3
Total	1,754	163.0



**Brickell**  
REALTY GROUP

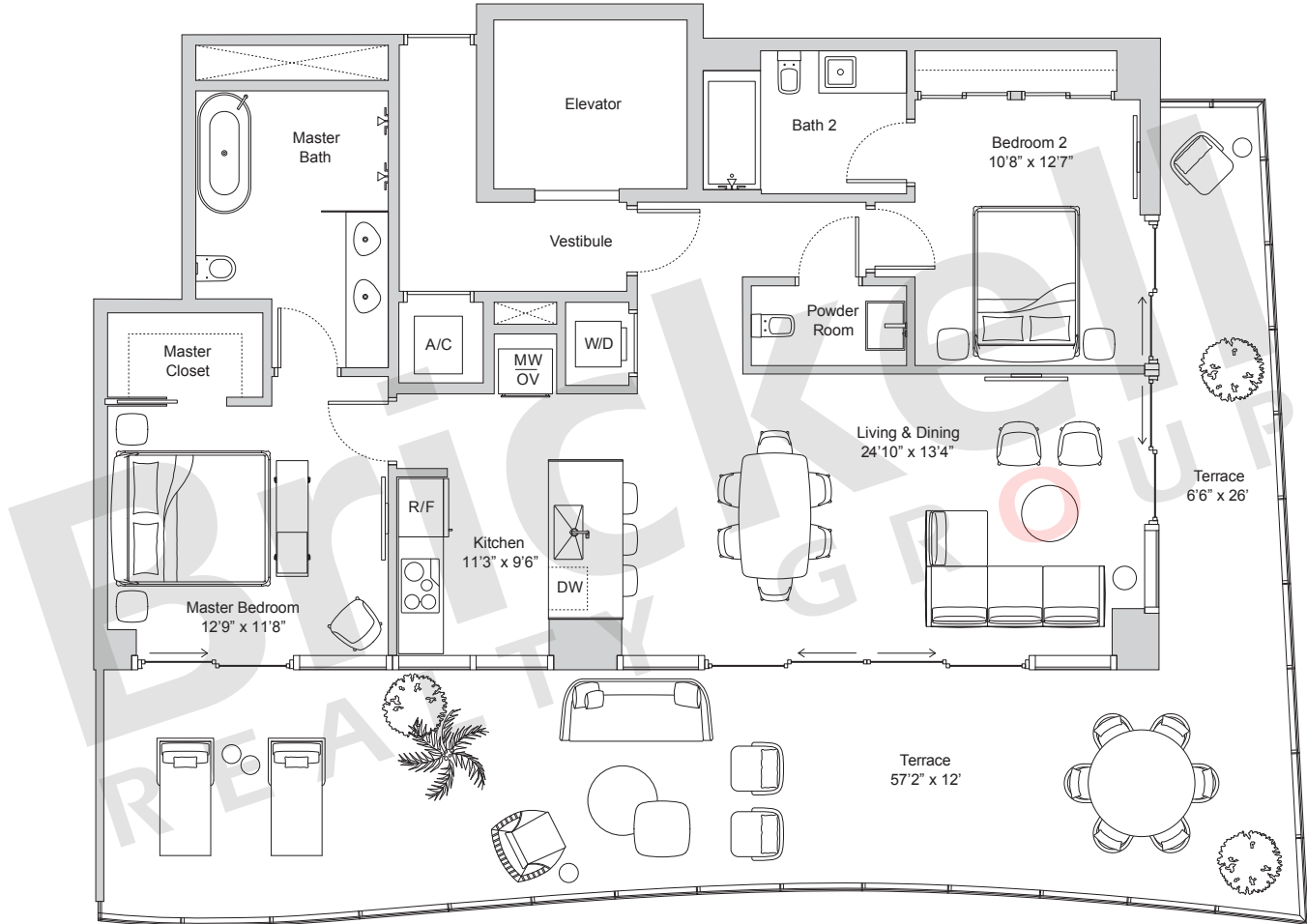
2071 NW 112th Avenue, Miami, FL 33172

[www.brickell-realty.com/57Ocean.html](http://www.brickell-realty.com/57Ocean.html)

Oral representation cannot be relied upon as correctly stating representations of the developer. Pictures of homes and condos may not reflect the final products which may vary. Dimensions, specifications, improvements, rendering, plans, land uses, materials, amenities, prices, and availability are subject to change at the developer's discretion without notice.

Stated dimensions are approximate and measured to the exterior boundaries of the exterior walls and the centerline of interior demising walls which in fact vary from the dimensions that would be determined by using the description and definition of the "Unit" set forth in the Declaration (which generally only includes the interior airspace between the perimeter walls and excludes interior structural components).

ATLANTIC OCEAN



COLLINS AVENUE

# 57 OCEAN

MIAMI BEACH

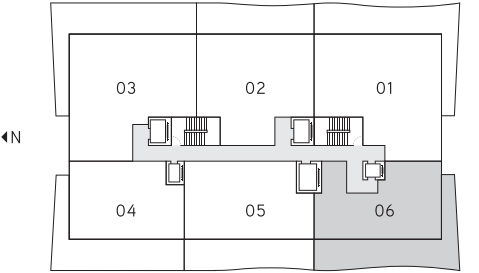
## Residence 06

Floors 4-14

2 Bedrooms · 2.5 Baths

	SQ FT	M <sup>2</sup>
Interior	1,363	126.6
Terrace	787	73.1
Total	2,150	199.7

OCEAN



COLLINS AVE.

## Brickell

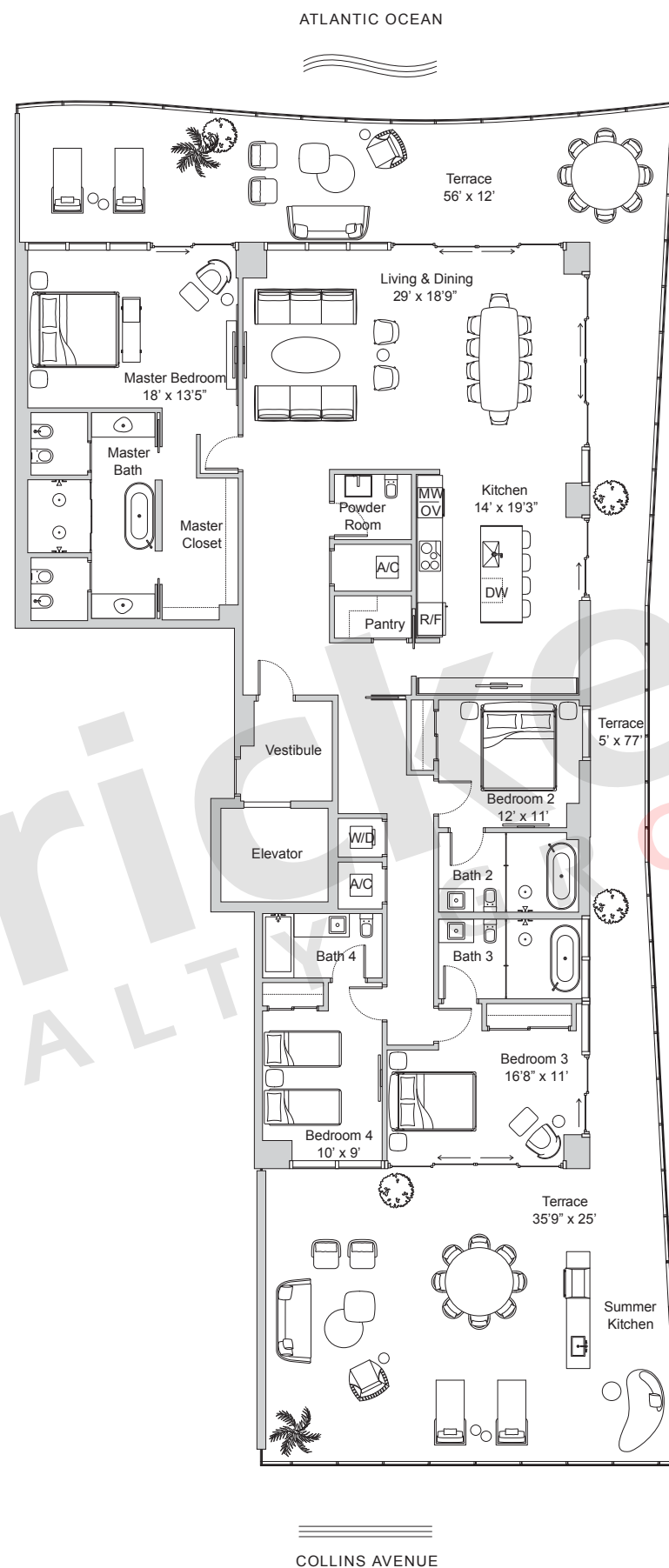
REALTY GROUP

2071 NW 112th Avenue, Miami, FL 33172

[www.brickell-realty.com/57Ocean.html](http://www.brickell-realty.com/57Ocean.html)

Oral representation cannot be relied upon as correctly stating representations of the developer. Pictures of homes and condos may not reflect the final products which may vary. Dimensions, specifications, improvements, rendering, plans, land uses, materials, amenities, prices, and availability are subject to change at the developer's discretion without notice.

Stated dimensions are approximate and measured to the exterior boundaries of the exterior walls and the centerline of interior demising walls which in fact vary from the dimensions that would be determined by using the description and definition of the "Unit" set forth in the Declaration (which generally only includes the interior airspace between the perimeter walls and excludes interior structural components).



# 57 OCEAN

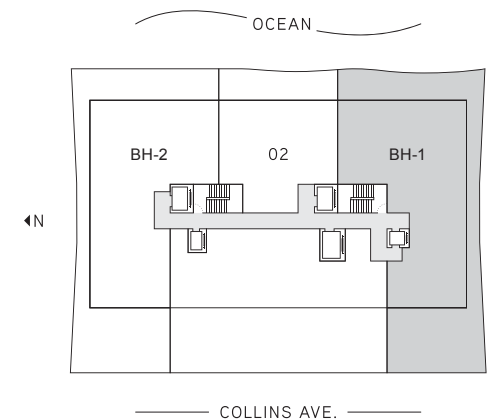
MIAMI BEACH

## Beach House South

Floor 3

4 Bedrooms · 4.5 Baths

	SQ FT	M <sup>2</sup>
Interior	2,904	269.8
Terrace	1,943	180.5
<b>Total</b>	<b>4,847</b>	<b>450.3</b>



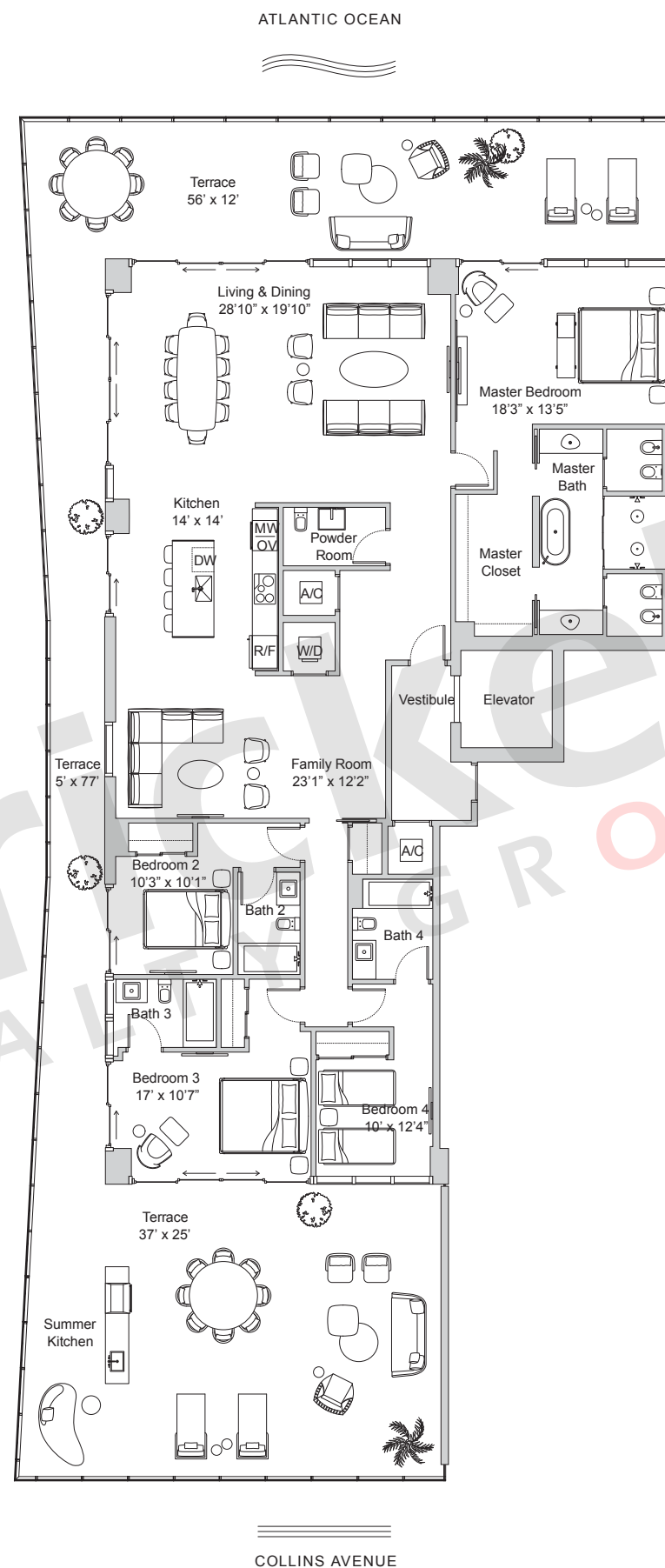
## Brickell REALTY GROUP

2071 NW 112th Avenue, Miami, FL 33172

[www.brickell-realty.com/57Ocean.html](http://www.brickell-realty.com/57Ocean.html)

Oral representation cannot be relied upon as correctly stating representations of the developer. Pictures of homes and condos may not reflect the final products which may vary. Dimensions, specifications, improvements, rendering, plans, land uses, materials, amenities, prices, and availability are subject to change at the developer's discretion without notice.

Stated dimensions are approximate and measured to the exterior boundaries of the exterior walls and the centerline of interior demising walls which in fact vary from the dimensions that would be determined by using the description and definition of the "Unit" set forth in the Declaration (which generally only includes the interior airspace between the perimeter walls and excludes interior structural components).



# 57 OCEAN

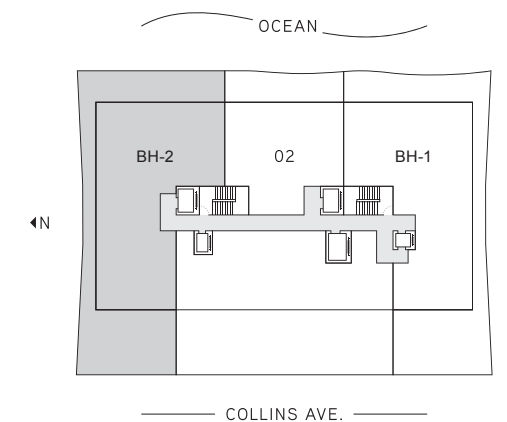
MIAMI BEACH

## Beach House North

Floor 3

4 Bedrooms · 4.5 Baths

	SQ FT	M <sup>2</sup>
Interior	2,963	275.3
Terrace	2,014	187.1
Total	4,977	462.4



## Brickell

REALTY GROUP

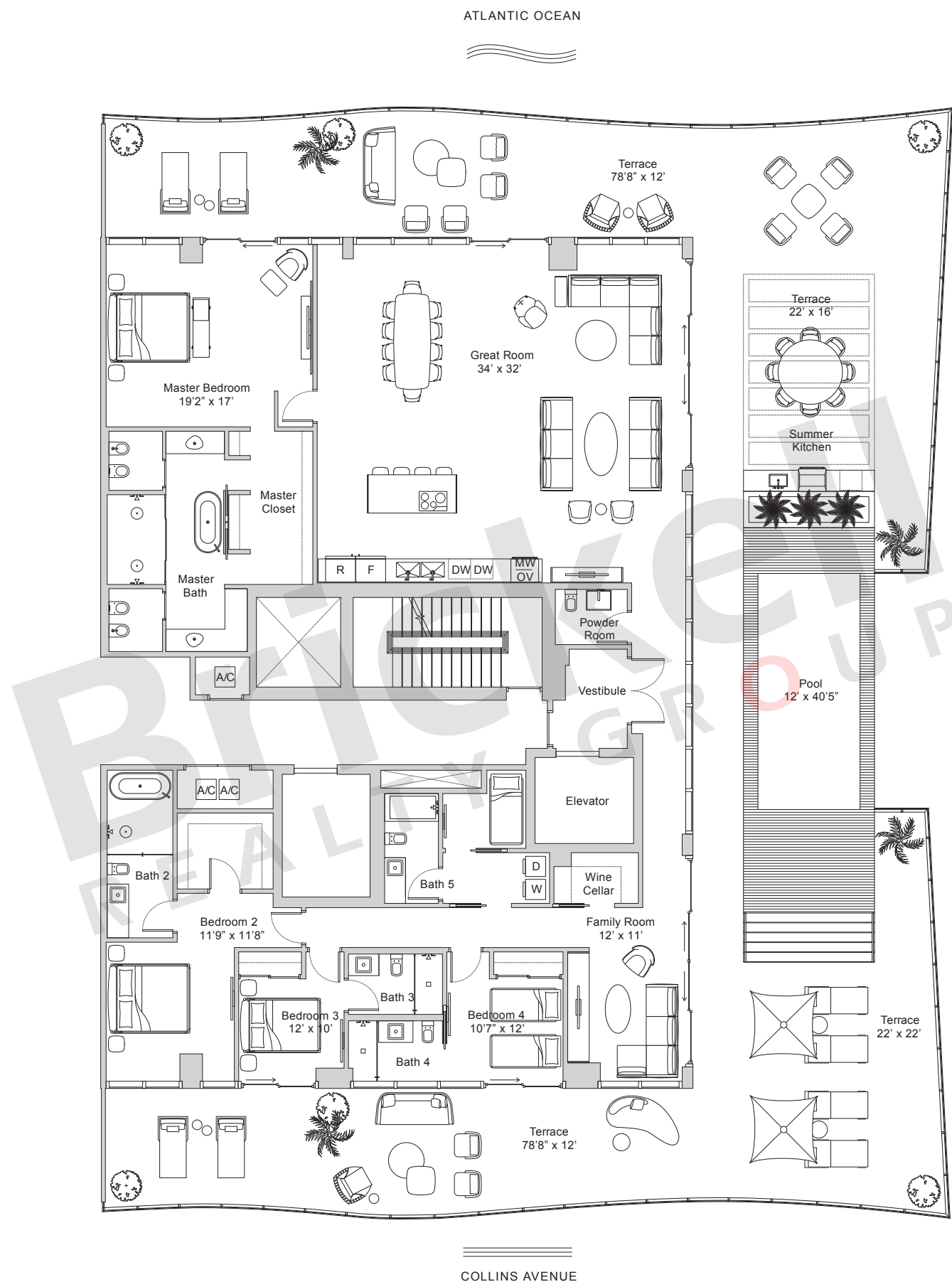
2071 NW 112th Avenue, Miami, FL 33172

[www.brickell-realty.com/57Ocean.html](http://www.brickell-realty.com/57Ocean.html)

Oral representation cannot be relied upon as correctly stating representations of the developer. Pictures of homes and condos may not reflect the final products which may vary. Dimensions, specifications, improvements, rendering, plans, land uses, materials, amenities, prices, and availability are subject to change at the developer's discretion without notice.

Stated dimensions are approximate and measured to the exterior boundaries of the exterior walls and the centerline of interior demising walls which in fact vary from the dimensions that would be determined by using the description and definition of the "Unit" set forth in the Declaration (which generally only includes the interior airspace between the perimeter walls and excludes interior structural components).





# 57 OCEAN

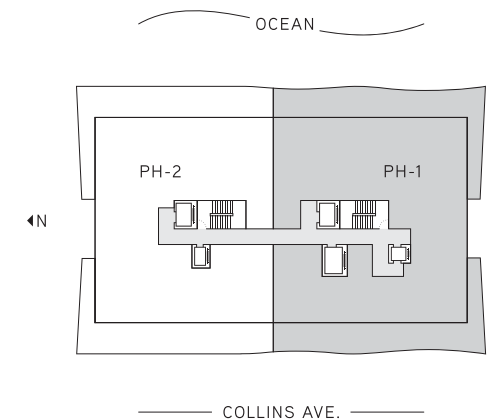
MIAMI BEACH

## Penthouse South

Floors 19

4 Bedrooms · 5.5 Baths

	SQ FT	M <sup>2</sup>
Interior	3,523	327.3
Terrace	3,406	316.4
Total	6,929	643.7



## Brickell REALTY GROUP

2071 NW 112th Avenue, Miami, FL 33172

[www.brickell-realty.com/57Ocean.html](http://www.brickell-realty.com/57Ocean.html)

Oral representation cannot be relied upon as correctly stating representations of the developer. Pictures of homes and condos may not reflect the final products which may vary. Dimensions, specifications, improvements, rendering, plans, land uses, materials, amenities, prices, and availability are subject to change at the developer's discretion without notice.

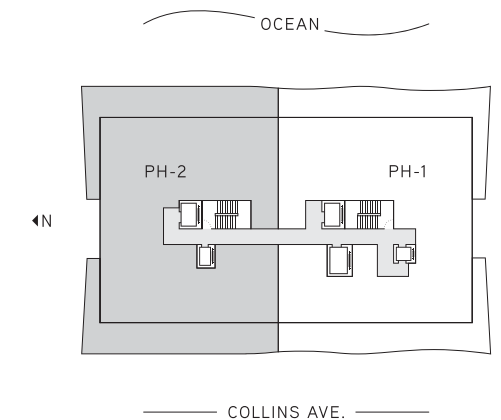
Stated dimensions are approximate and measured to the exterior boundaries of the exterior walls and the centerline of interior demising walls which in fact vary from the dimensions that would be determined by using the description and definition of the "Unit" set forth in the Declaration (which generally only includes the interior airspace between the perimeter walls and excludes interior structural components).

## Penthouse North

Floors 19

4 Bedrooms · 5.5 Baths

	SQ FT	M <sup>2</sup>
Interior	3,623	336.6
Terrace	3,529	327.8
<b>Total</b>	<b>7,152</b>	<b>664.4</b>



**Brickell**  
REALTY GROUP

2071 NW 112th Avenue, Miami, FL 33172

[www.brickell-realty.com/57Ocean.html](http://www.brickell-realty.com/57Ocean.html)

Oral representation cannot be relied upon as correctly stating representations of the developer. Pictures of homes and condos may not reflect the final products which may vary. Dimensions, specifications, improvements, rendering, plans, land uses, materials, amenities, prices, and availability are subject to change at the developer's discretion without notice.

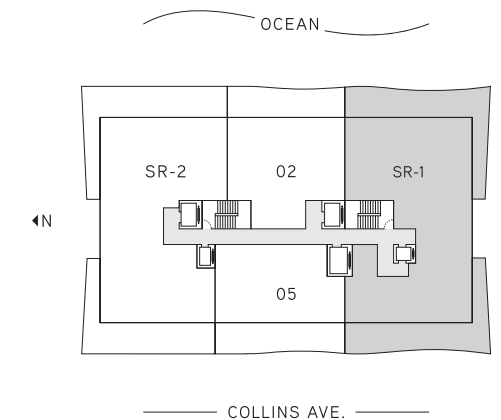
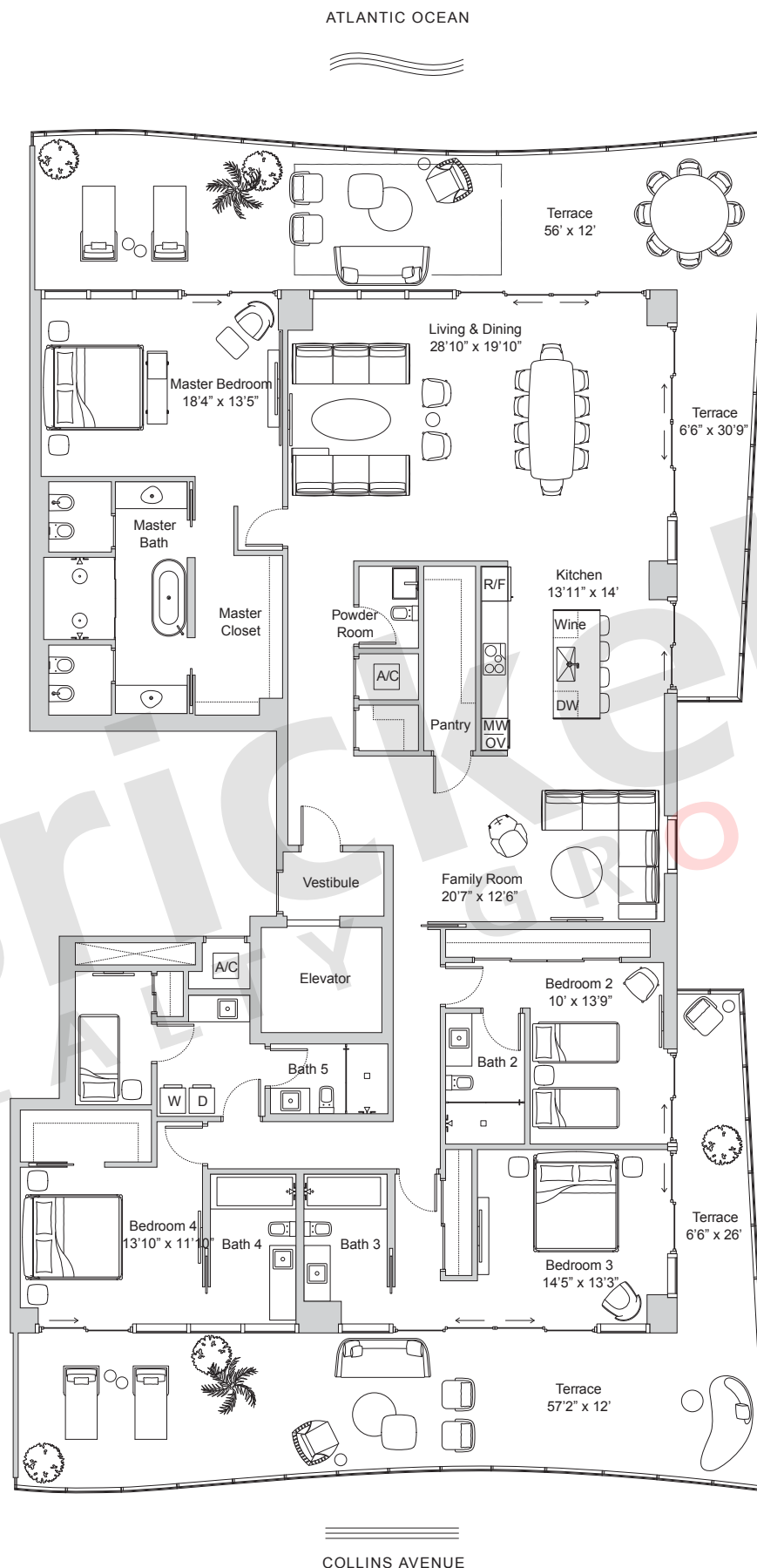
Stated dimensions are approximate and measured to the exterior boundaries of the exterior walls and the centerline of interior demising walls which in fact vary from the dimensions that would be determined by using the description and definition of the "Unit" set forth in the Declaration (which generally only includes the interior airspace between the perimeter walls and excludes interior structural components).

## Sky Residence South

Floors 15-18

4 Bedrooms · 5.5 Baths

	SQ FT	M <sup>2</sup>
Interior	3,443	319.9
Terrace	1,581	146.9
<b>Total</b>	<b>5,024</b>	<b>466.8</b>



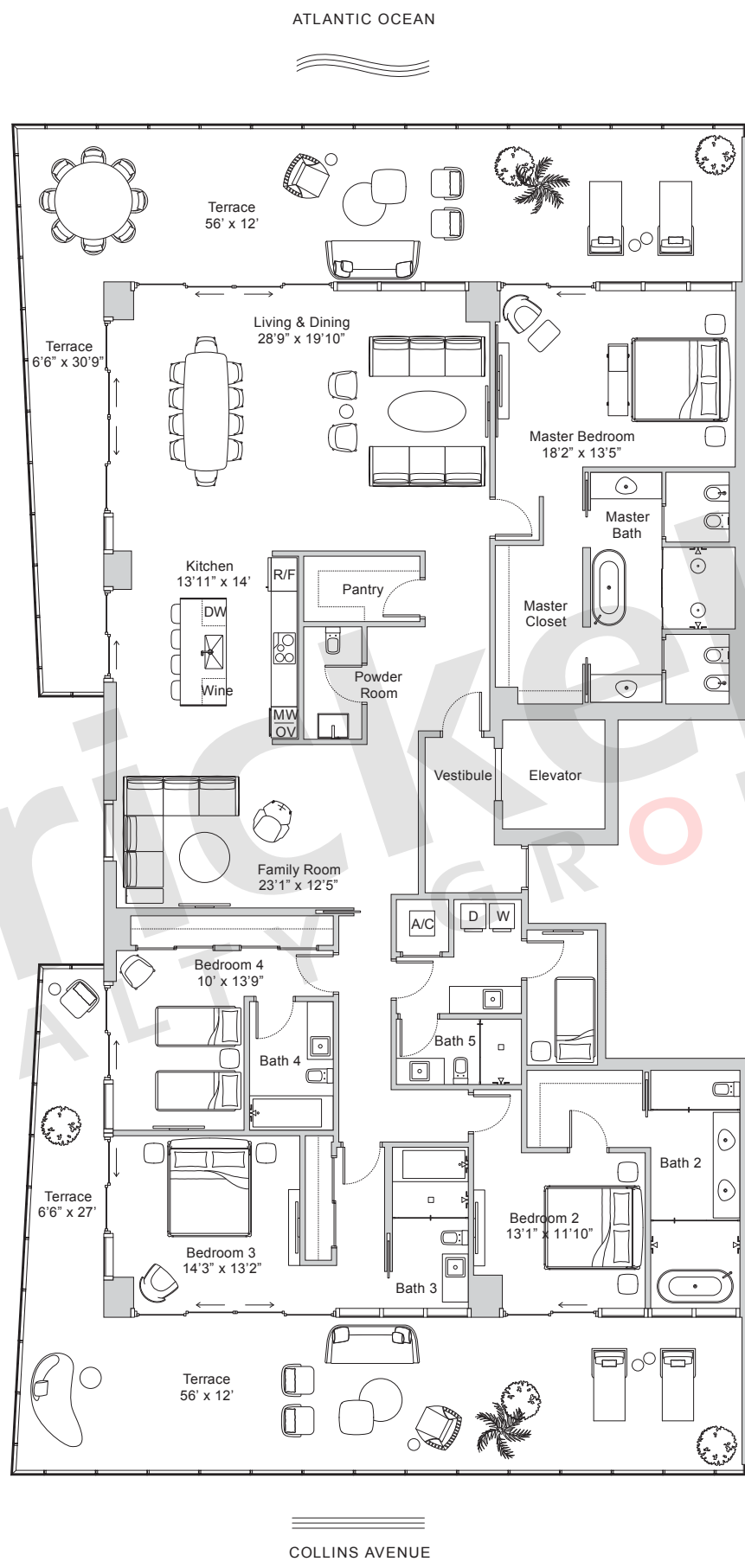
**Brickell**  
REALTY GROUP

2071 NW 112th Avenue, Miami, FL 33172

[www.brickell-realty.com/57Ocean.html](http://www.brickell-realty.com/57Ocean.html)

Oral representation cannot be relied upon as correctly stating representations of the developer. Pictures of homes and condos may not reflect the final products which may vary. Dimensions, specifications, improvements, rendering, plans, land uses, materials, amenities, prices, and availability are subject to change at the developer's discretion without notice.

Stated dimensions are approximate and measured to the exterior boundaries of the exterior walls and the centerline of interior demising walls which in fact vary from the dimensions that would be determined by using the description and definition of the "Unit" set forth in the Declaration (which generally only includes the interior airspace between the perimeter walls and excludes interior structural components).



# 57 OCEAN

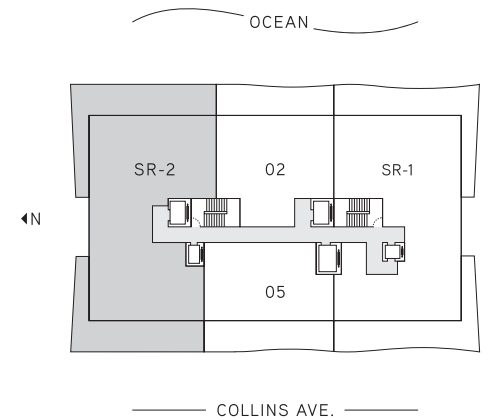
MIAMI BEACH

## Sky Residence North

Floors 15-18

4 Bedrooms · 5.5 Baths

	SQ FT	M <sup>2</sup>
Interior	3,474	322.7
Terrace	1,661	154.3
Total	5,135	477.0



## Brickell REALTY GROUP

2071 NW 112th Avenue, Miami, FL 33172

[www.brickell-realty.com/57Ocean.html](http://www.brickell-realty.com/57Ocean.html)

Oral representation cannot be relied upon as correctly stating representations of the developer. Pictures of homes and condos may not reflect the final products which may vary. Dimensions, specifications, improvements, rendering, plans, land uses, materials, amenities, prices, and availability are subject to change at the developer's discretion without notice.

Stated dimensions are approximate and measured to the exterior boundaries of the exterior walls and the centerline of interior demising walls which in fact vary from the dimensions that would be determined by using the description and definition of the "Unit" set forth in the Declaration (which generally only includes the interior airspace between the perimeter walls and excludes interior structural components).