

Una

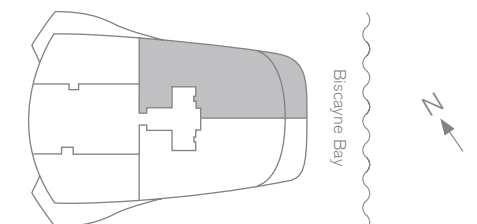
North East Residence

Levels 05-16 Unit 01

3 Bedrooms · 3.5 Baths



| | SQ FT | M ² |
|----------|-------|----------------|
| Interior | 2,108 | 195.8 |
| Exterior | 312 | 29.0 |
| Total | 2,420 | 224.8 |



Brickell
REALTY GROUP

2071 NW 112th Avenue, Miami, FL 33172

www.brickell-realty.com/Una.html

Oral representation cannot be relied upon as correctly stating representations of the developer. Pictures of homes and condos may not reflect the final products which may vary. Dimensions, specifications, improvements, rendering, plans, land uses, materials, amenities, prices, and availability are subject to change at the developer's discretion without notice.

Stated dimensions are approximate and measured to the exterior boundaries of the exterior walls and the centerline of interior demising walls which in fact vary from the dimensions that would be determined by using the description and definition of the "Unit" set forth in the Declaration (which generally only includes the interior airspace between the perimeter walls and excludes interior structural components).

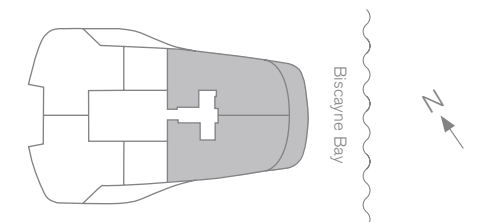
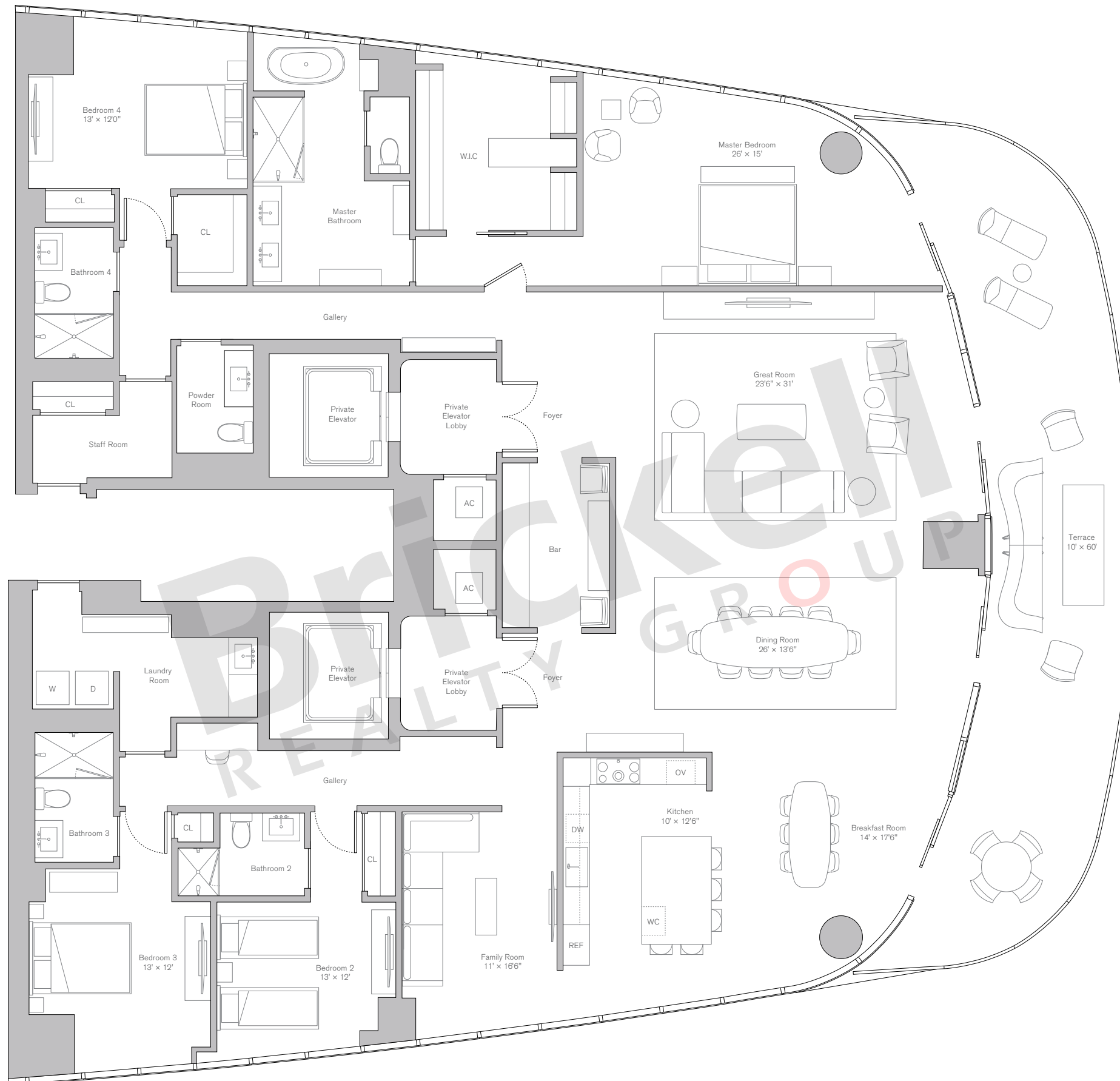
Una

East Residence

Levels 17 & 18 Unit 01

4 Bedrooms · 4.5 Baths
Family Room · Staff Room

| | SQ FT | M ² |
|----------|-------|----------------|
| Interior | 4,222 | 392.2 |
| Exterior | 624 | 58.0 |
| Total | 4,846 | 450.2 |



Brickell
REALTY GROUP

2071 NW 112th Avenue, Miami, FL 33172

www.brickell-realty.com/Una.html

Oral representation cannot be relied upon as correctly stating representations of the developer. Pictures of homes and condos may not reflect the final products which may vary. Dimensions, specifications, improvements, rendering, plans, land uses, materials, amenities, prices, and availability are subject to change at the developer's discretion without notice.

Stated dimensions are approximate and measured to the exterior boundaries of the exterior walls and the centerline of interior demising walls which in fact vary from the dimensions that would be determined by using the description and definition of the "Unit" set forth in the Declaration (which generally only includes the interior airspace between the perimeter walls and excludes interior structural components).

Una

North East Residence

Levels 19-37 Unit 01

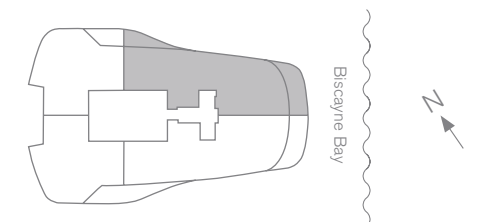
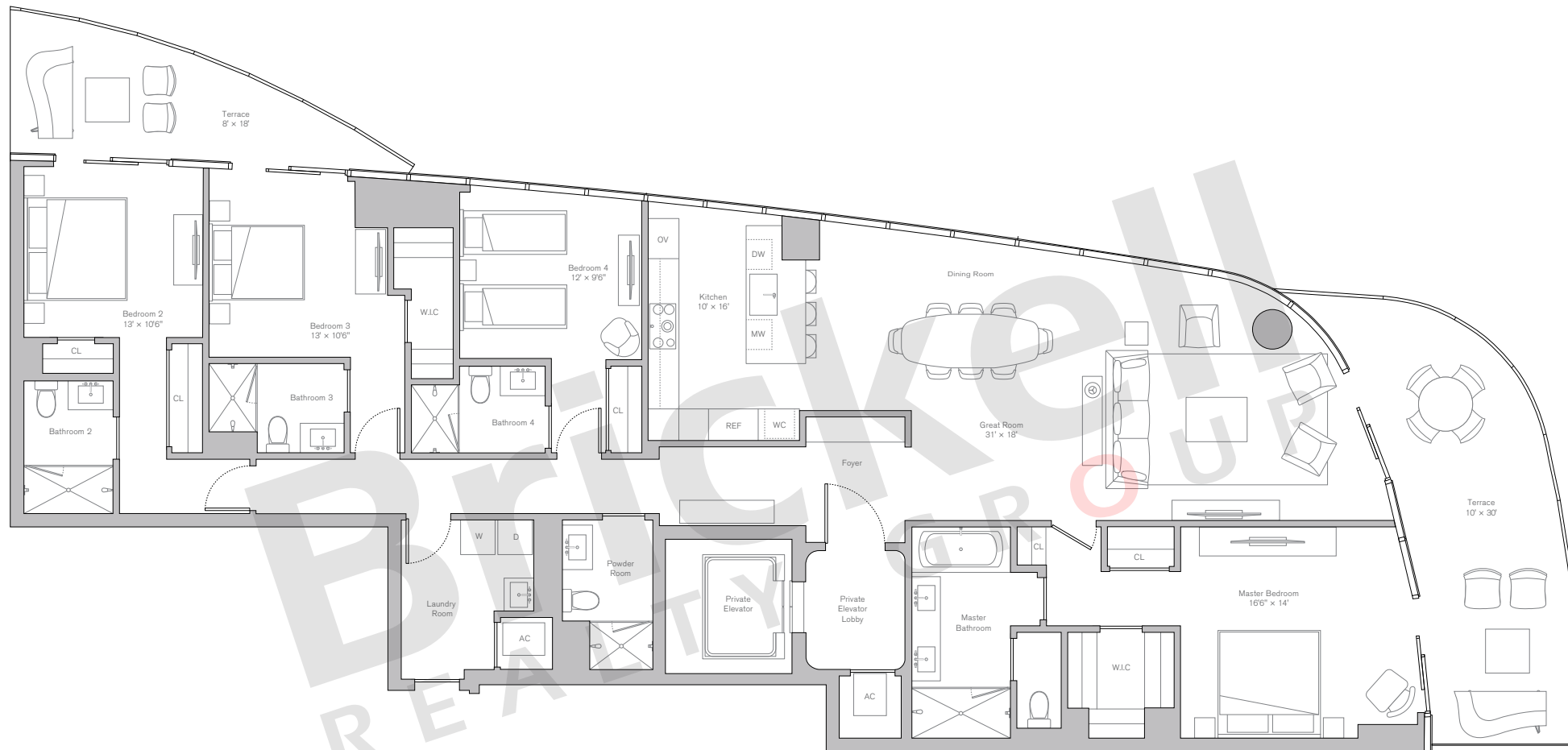
4 Bedrooms · 4.5 Baths

Levels 19-29

| | SQ FT | M ² |
|----------|-------|----------------|
| Interior | 2,724 | 253.1 |
| Exterior | 456 | 42.4 |
| Total | 3,180 | 295.5 |

Levels 30-37

| | SQ FT | M ² |
|----------|-------|----------------|
| Interior | 2,759 | 256.3 |
| Exterior | 456 | 42.4 |
| Total | 3,215 | 298.7 |



Brickell
REALTY GROUP

2071 NW 112th Avenue, Miami, FL 33172

www.brickell-realty.com/Una.html

Oral representation cannot be relied upon as correctly stating representations of the developer. Pictures of homes and condos may not reflect the final products which may vary. Dimensions, specifications, improvements, rendering, plans, land uses, materials, amenities, prices, and availability are subject to change at the developer's discretion without notice.

Stated dimensions are approximate and measured to the exterior boundaries of the exterior walls and the centerline of interior demising walls which in fact vary from the dimensions that would be determined by using the description and definition of the "Unit" set forth in the Declaration (which generally only includes the interior airspace between the perimeter walls and excludes interior structural components).

Una

North East Residence

Levels 19-37 Unit 01

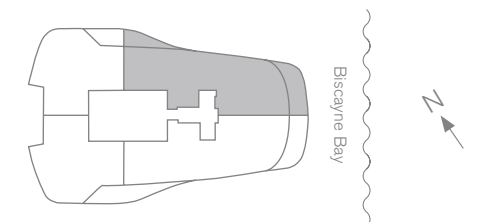
4 Bedrooms · 4.5 Baths

Levels 19-29

| | SQ FT | M ² |
|----------|-------|----------------|
| Interior | 2,724 | 253.1 |
| Exterior | 456 | 42.4 |
| Total | 3,180 | 295.5 |

Levels 30-37

| | SQ FT | M ² |
|----------|-------|----------------|
| Interior | 2,759 | 256.3 |
| Exterior | 456 | 42.4 |
| Total | 3,215 | 298.7 |



Brickell
REALTY GROUP

2071 NW 112th Avenue, Miami, FL 33172

www.brickell-realty.com/Una.html

Oral representation cannot be relied upon as correctly stating representations of the developer. Pictures of homes and condos may not reflect the final products which may vary. Dimensions, specifications, improvements, rendering, plans, land uses, materials, amenities, prices, and availability are subject to change at the developer's discretion without notice.

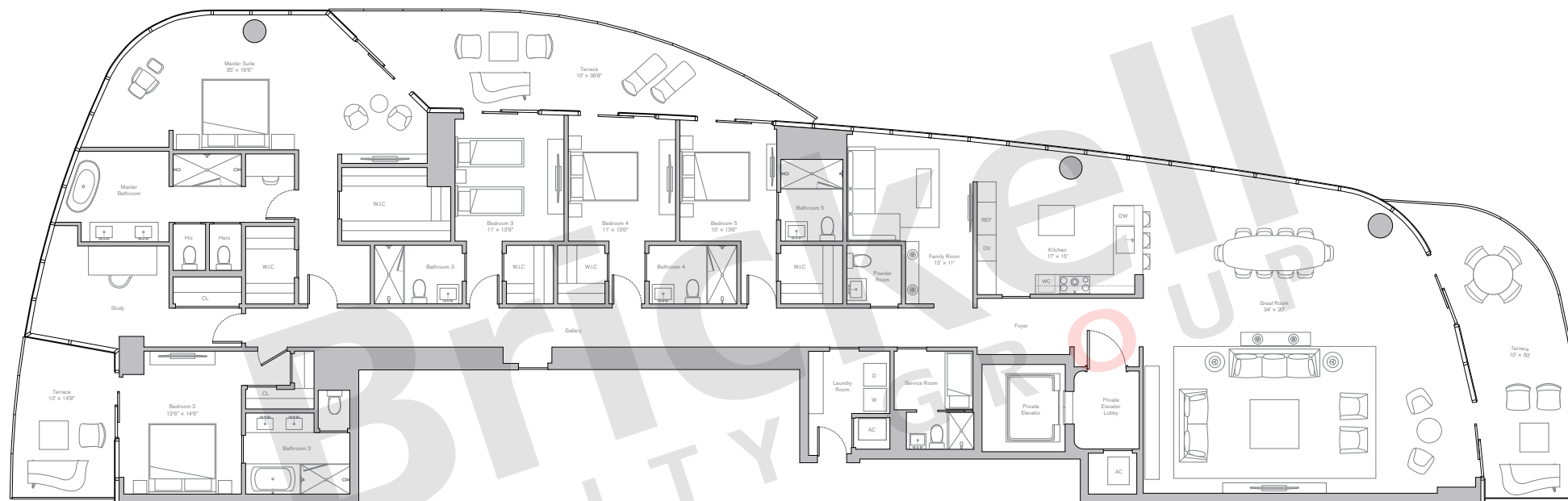
Stated dimensions are approximate and measured to the exterior boundaries of the exterior walls and the centerline of interior demising walls which in fact vary from the dimensions that would be determined by using the description and definition of the "Unit" set forth in the Declaration (which generally only includes the interior airspace between the perimeter walls and excludes interior structural components).

Una

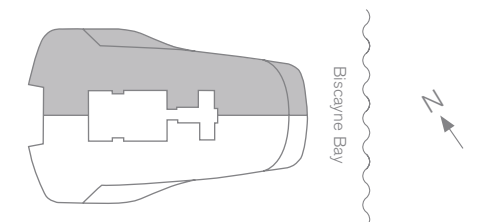
North East Residence

Levels 38-43 Unit 01

5 Bedrooms · 6.5 Baths
Study · Family Room



| | SQ FT | M ² |
|----------|-------|----------------|
| Interior | 4,697 | 436.4 |
| Exterior | 812 | 75.4 |
| Total | 5,509 | 511.8 |



Brickell
REALTY GROUP

2071 NW 112th Avenue, Miami, FL 33172

www.brickell-realty.com/Una.html

Oral representation cannot be relied upon as correctly stating representations of the developer. Pictures of homes and condos may not reflect the final products which may vary. Dimensions, specifications, improvements, rendering, plans, land uses, materials, amenities, prices, and availability are subject to change at the developer's discretion without notice.

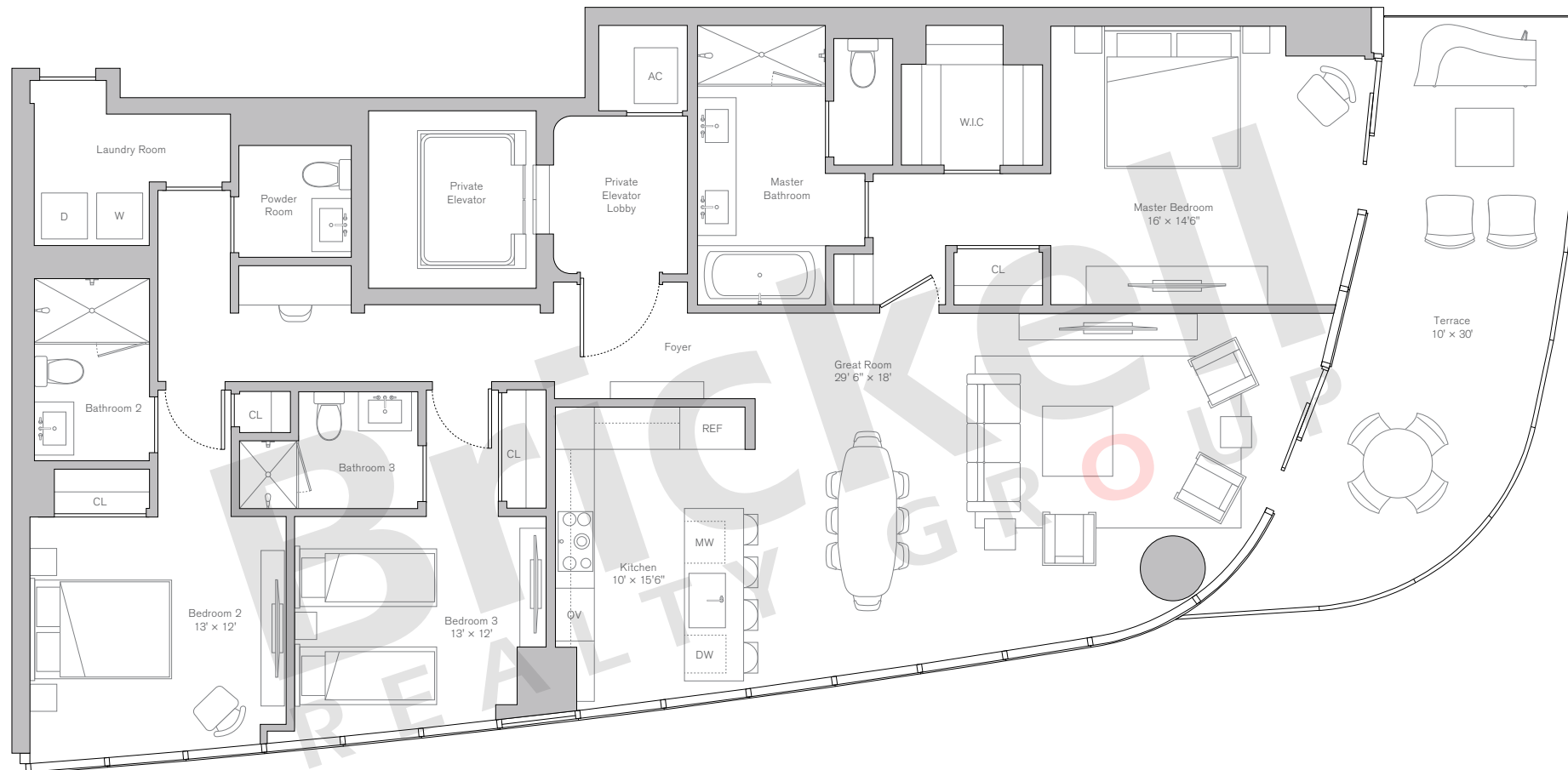
Stated dimensions are approximate and measured to the exterior boundaries of the exterior walls and the centerline of interior demising walls which in fact vary from the dimensions that would be determined by using the description and definition of the "Unit" set forth in the Declaration (which generally only includes the interior airspace between the perimeter walls and excludes interior structural components).

Una

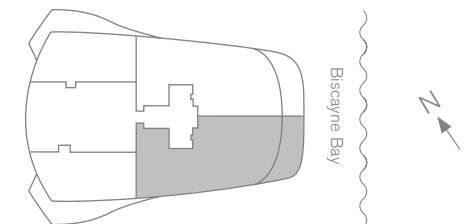
South East Residence

Levels 05-16 Unit 02

3 Bedrooms · 3.5 Baths



| | SQ FT | M ² |
|----------|-------|----------------|
| Interior | 2,115 | 196.5 |
| Exterior | 312 | 29.0 |
| Total | 2,427 | 225.5 |



Brickell
REALTY GROUP

2071 NW 112th Avenue, Miami, FL 33172

www.brickell-realty.com/Una.html

Oral representation cannot be relied upon as correctly stating representations of the developer. Pictures of homes and condos may not reflect the final products which may vary. Dimensions, specifications, improvements, rendering, plans, land uses, materials, amenities, prices, and availability are subject to change at the developer's discretion without notice.

Stated dimensions are approximate and measured to the exterior boundaries of the exterior walls and the centerline of interior demising walls which in fact vary from the dimensions that would be determined by using the description and definition of the "Unit" set forth in the Declaration (which generally only includes the interior airspace between the perimeter walls and excludes interior structural components).

Una

South East Residence

Levels 19-37 Unit 02

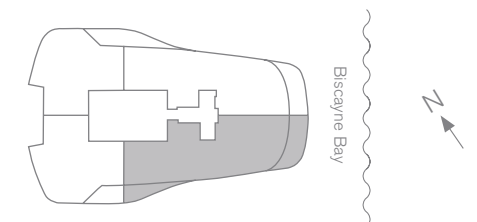
4 Bedrooms · 4.5 Baths

Levels 19-29

| | SQ FT | M ² |
|----------|-------|----------------|
| Interior | 2,731 | 253.7 |
| Exterior | 456 | 42.4 |
| Total | 3,187 | 296.1 |

Levels 30-37

| | SQ FT | M ² |
|----------|-------|----------------|
| Interior | 2,766 | 257.0 |
| Exterior | 456 | 42.4 |
| Total | 3,222 | 299.4 |



Brickell
REALTY GROUP

2071 NW 112th Avenue, Miami, FL 33172

www.brickell-realty.com/Una.html

Oral representation cannot be relied upon as correctly stating representations of the developer. Pictures of homes and condos may not reflect the final products which may vary. Dimensions, specifications, improvements, rendering, plans, land uses, materials, amenities, prices, and availability are subject to change at the developer's discretion without notice.

Stated dimensions are approximate and measured to the exterior boundaries of the exterior walls and the centerline of interior demising walls which in fact vary from the dimensions that would be determined by using the description and definition of the "Unit" set forth in the Declaration (which generally only includes the interior airspace between the perimeter walls and excludes interior structural components).

Una

South East Residence

Levels 19-37 Unit 02

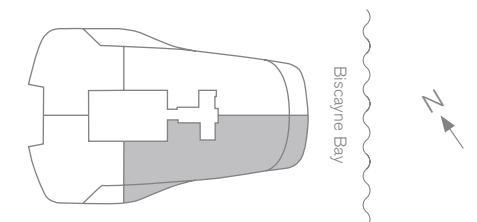
4 Bedrooms · 4.5 Baths

Levels 19-29

| | SQ FT | M ² |
|----------|-------|----------------|
| Interior | 2,731 | 253.7 |
| Exterior | 456 | 42.4 |
| Total | 3,187 | 296.1 |

Levels 30-37

| | SQ FT | M ² |
|----------|-------|----------------|
| Interior | 2,766 | 257.0 |
| Exterior | 456 | 42.4 |
| Total | 3,222 | 299.4 |



Brickell
REALTY GROUP

2071 NW 112th Avenue, Miami, FL 33172

www.brickell-realty.com/Una.html

Oral representation cannot be relied upon as correctly stating representations of the developer. Pictures of homes and condos may not reflect the final products which may vary. Dimensions, specifications, improvements, rendering, plans, land uses, materials, amenities, prices, and availability are subject to change at the developer's discretion without notice.

Stated dimensions are approximate and measured to the exterior boundaries of the exterior walls and the centerline of interior demising walls which in fact vary from the dimensions that would be determined by using the description and definition of the "Unit" set forth in the Declaration (which generally only includes the interior airspace between the perimeter walls and excludes interior structural components).

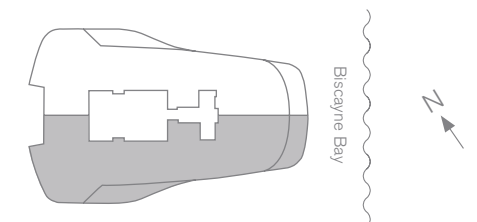
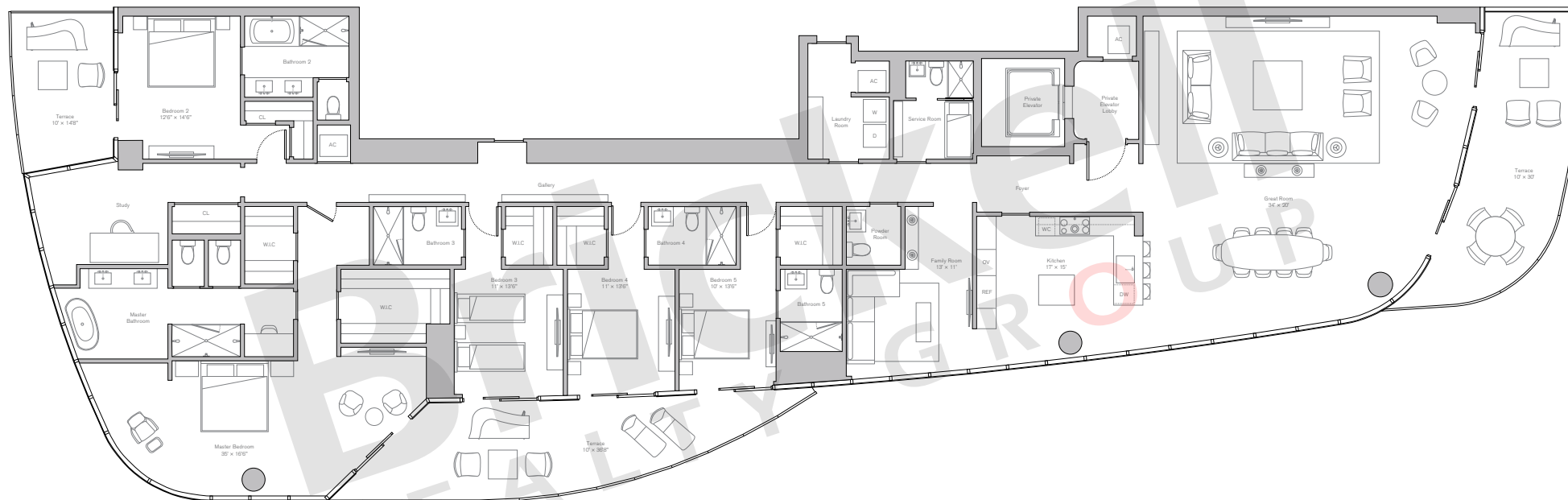
Una

South East Residence

Levels 38-43 Unit 02

5 Bedrooms · 6.5 Baths
Study · Family Room

| | SQ FT | M ² |
|----------|-------|----------------|
| Interior | 4,786 | 444.6 |
| Exterior | 812 | 75.4 |
| Total | 5,598 | 520.0 |



Brickell
REALTY GROUP

2071 NW 112th Avenue, Miami, FL 33172

www.brickell-realty.com/Una.html

Oral representation cannot be relied upon as correctly stating representations of the developer. Pictures of homes and condos may not reflect the final products which may vary. Dimensions, specifications, improvements, rendering, plans, land uses, materials, amenities, prices, and availability are subject to change at the developer's discretion without notice.

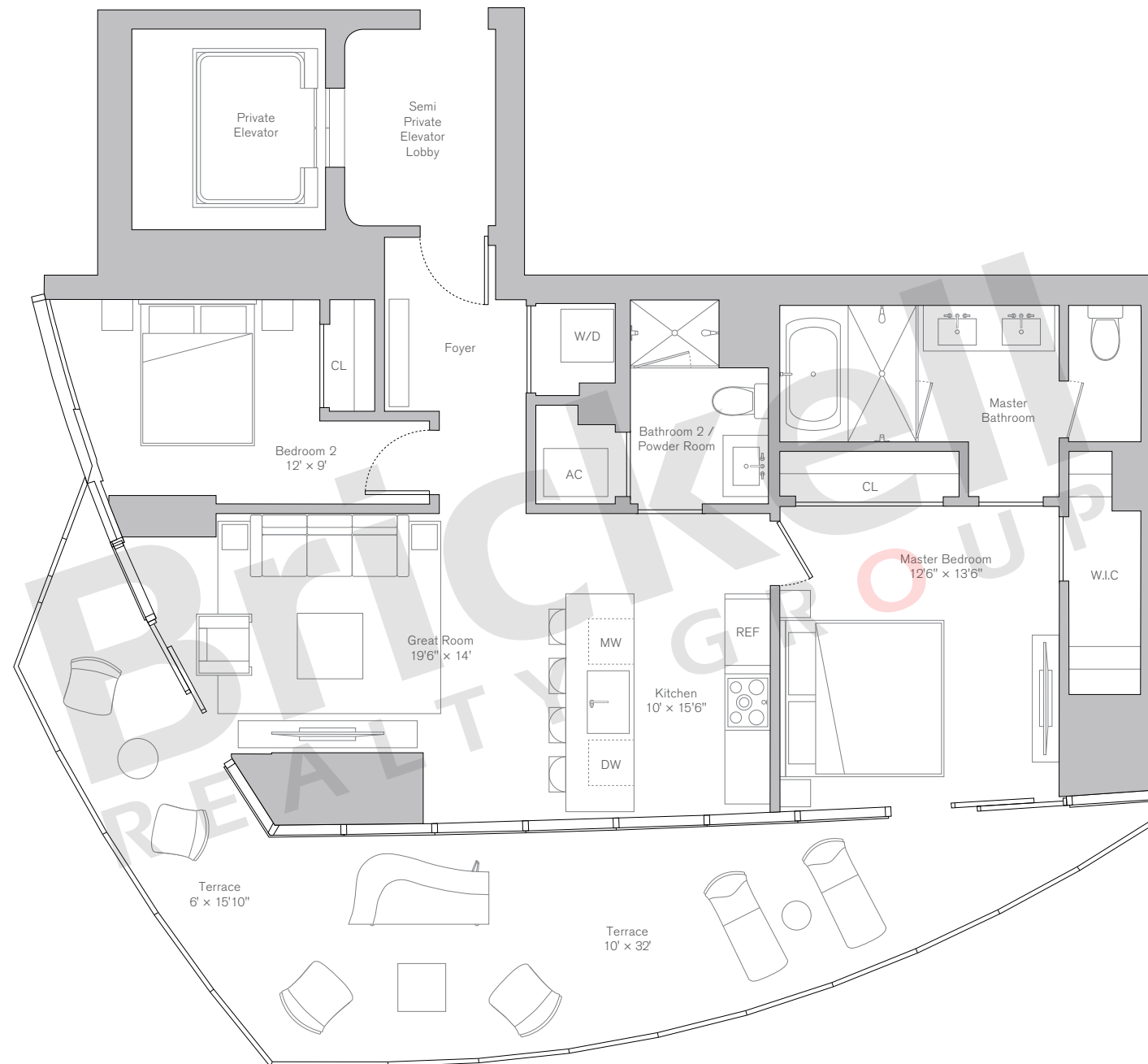
Stated dimensions are approximate and measured to the exterior boundaries of the exterior walls and the centerline of interior demising walls which in fact vary from the dimensions that would be determined by using the description and definition of the "Unit" set forth in the Declaration (which generally only includes the interior airspace between the perimeter walls and excludes interior structural components).

Una

South West Residence

Levels 05-16 Unit 03

2 Bedrooms · 2 Baths

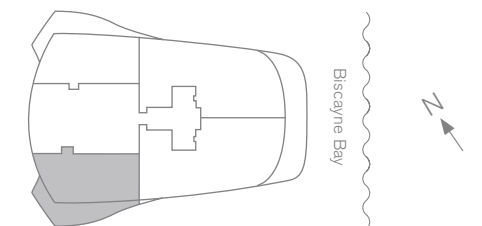


Levels 05-14

| | SQ FT | M ² |
|----------|-------|----------------|
| Interior | 1,179 | 109.5 |
| Exterior | 404 | 37.5 |
| Total | 1,583 | 147.0 |

Levels 15-16

| | SQ FT | M ² |
|----------|-------|----------------|
| Interior | 1,215 | 112.9 |
| Exterior | 416 | 38.6 |
| Total | 1,631 | 151.5 |



Brickell
REALTY GROUP

2071 NW 112th Avenue, Miami, FL 33172

www.brickell-realty.com/Una.html

Oral representation cannot be relied upon as correctly stating representations of the developer. Pictures of homes and condos may not reflect the final products which may vary. Dimensions, specifications, improvements, rendering, plans, land uses, materials, amenities, prices, and availability are subject to change at the developer's discretion without notice.

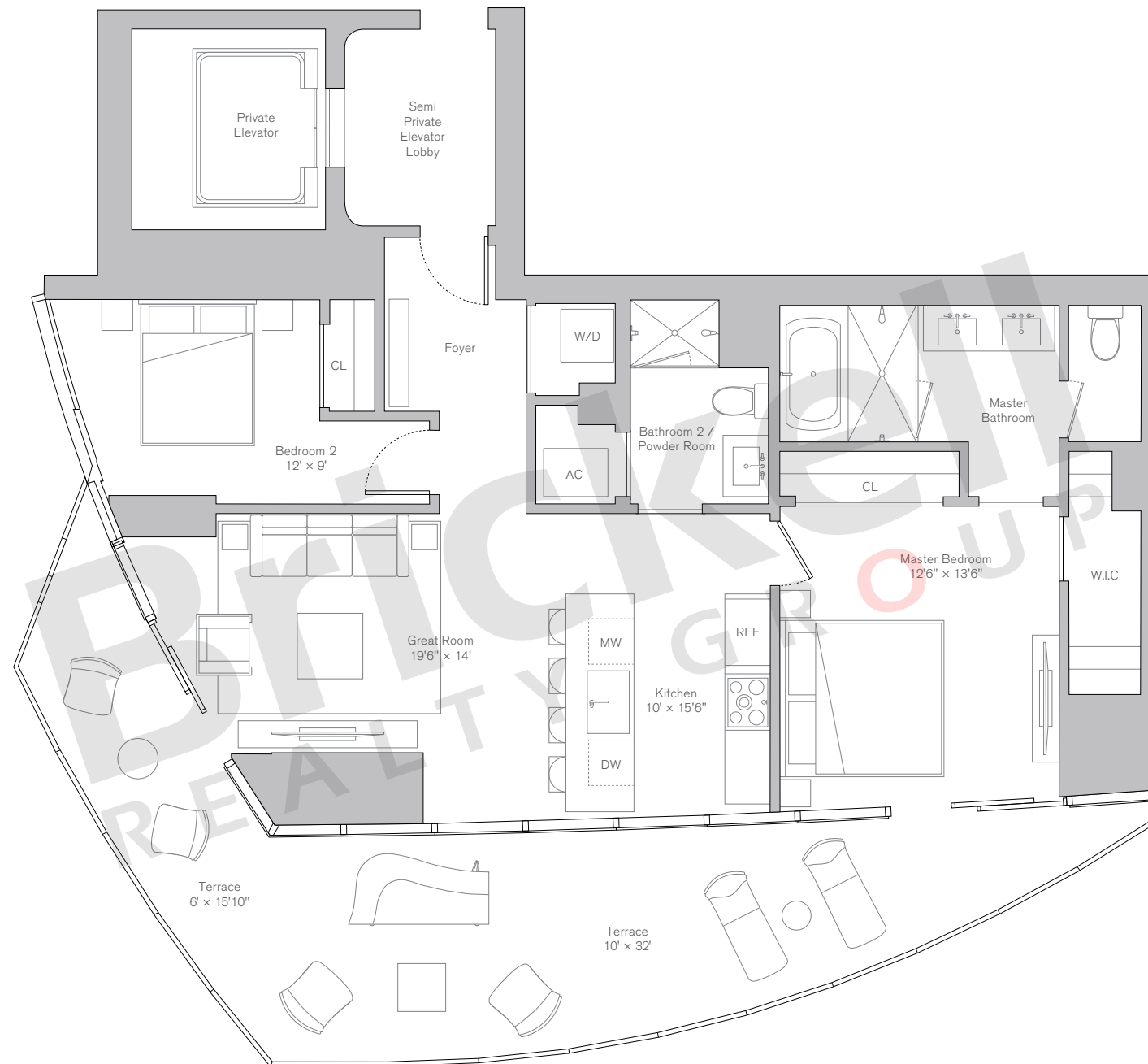
Stated dimensions are approximate and measured to the exterior boundaries of the exterior walls and the centerline of interior demising walls which in fact vary from the dimensions that would be determined by using the description and definition of the "Unit" set forth in the Declaration (which generally only includes the interior airspace between the perimeter walls and excludes interior structural components).

Una

South West Residence

Levels 05-16 Unit 03

2 Bedrooms · 2 Baths

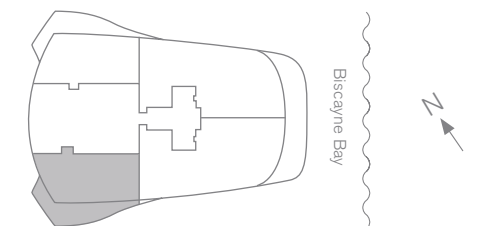


Levels 05-14

| | SQ FT | M ² |
|----------|-------|----------------|
| Interior | 1,179 | 109.5 |
| Exterior | 404 | 37.5 |
| Total | 1,583 | 147.0 |

Levels 15-16

| | SQ FT | M ² |
|----------|-------|----------------|
| Interior | 1,215 | 112.9 |
| Exterior | 416 | 38.6 |
| Total | 1,631 | 151.5 |



Brickell
REALTY GROUP

2071 NW 112th Avenue, Miami, FL 33172

www.brickell-realty.com/Una.html

Oral representation cannot be relied upon as correctly stating representations of the developer. Pictures of homes and condos may not reflect the final products which may vary. Dimensions, specifications, improvements, rendering, plans, land uses, materials, amenities, prices, and availability are subject to change at the developer's discretion without notice.

Stated dimensions are approximate and measured to the exterior boundaries of the exterior walls and the centerline of interior demising walls which in fact vary from the dimensions that would be determined by using the description and definition of the "Unit" set forth in the Declaration (which generally only includes the interior airspace between the perimeter walls and excludes interior structural components).

Una

North East Residence

Levels 19-37 Unit 03

3 Bedrooms · 3.5 Baths

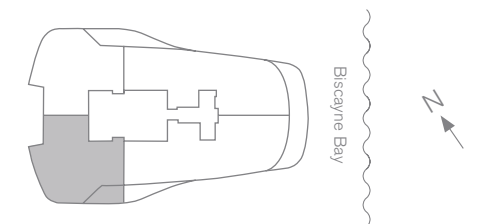


Levels 19-29

| | SQ FT | M ² |
|----------|-------|----------------|
| Interior | 1,995 | 185.3 |
| Exterior | 356 | 33.1 |
| Total | 2,351 | 218.4 |

Levels 30-37

| | SQ FT | M ² |
|----------|-------|----------------|
| Interior | 2,019 | 187.6 |
| Exterior | 356 | 33.1 |
| Total | 2,375 | 220.7 |



Brickell
REALTY GROUP

2071 NW 112th Avenue, Miami, FL 33172

www.brickell-realty.com/Una.html

Oral representation cannot be relied upon as correctly stating representations of the developer. Pictures of homes and condos may not reflect the final products which may vary. Dimensions, specifications, improvements, rendering, plans, land uses, materials, amenities, prices, and availability are subject to change at the developer's discretion without notice.

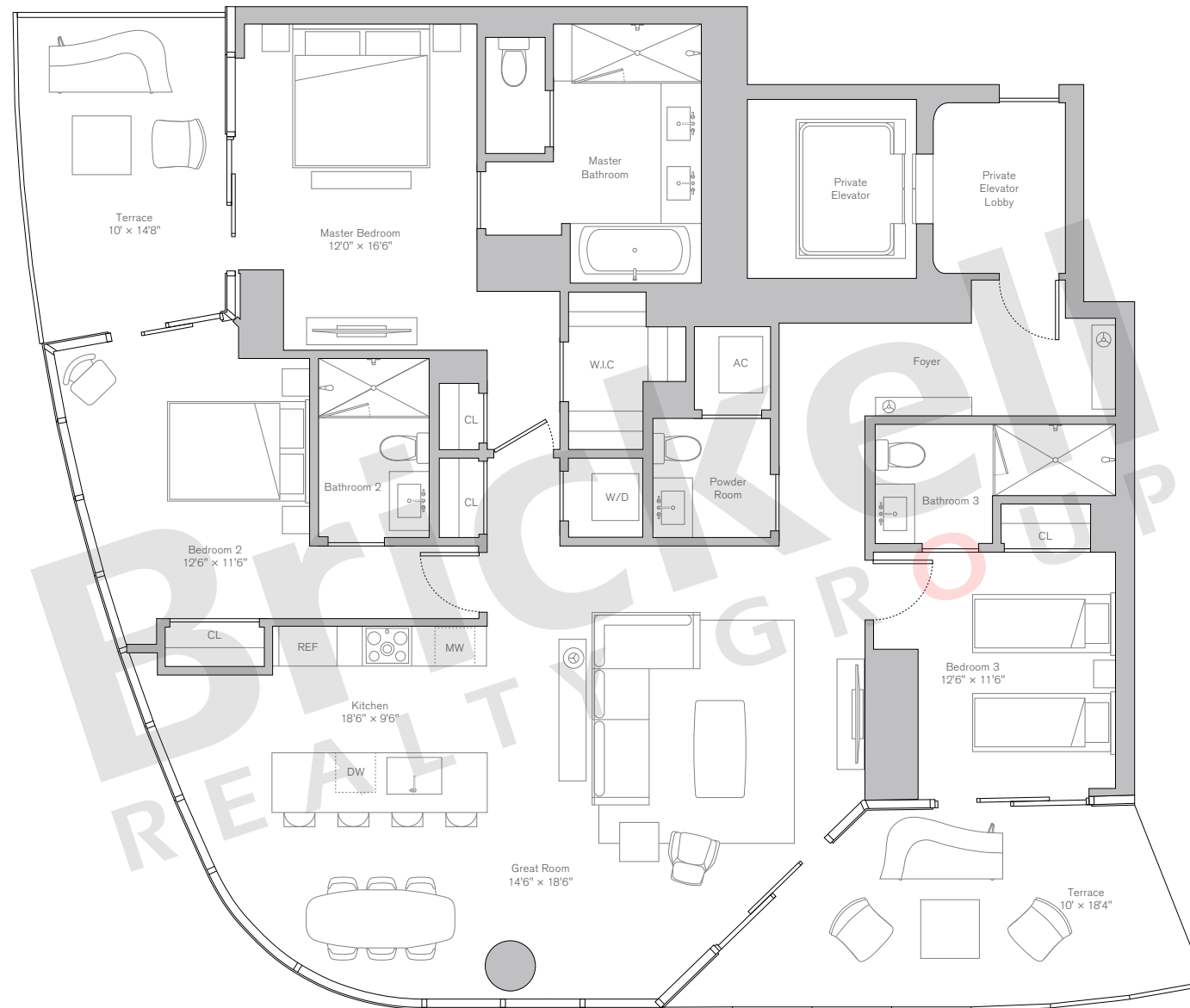
Stated dimensions are approximate and measured to the exterior boundaries of the exterior walls and the centerline of interior demising walls which in fact vary from the dimensions that would be determined by using the description and definition of the "Unit" set forth in the Declaration (which generally only includes the interior airspace between the perimeter walls and excludes interior structural components).

Una

North East Residence

Levels 19-37 Unit 03

3 Bedrooms · 3.5 Baths

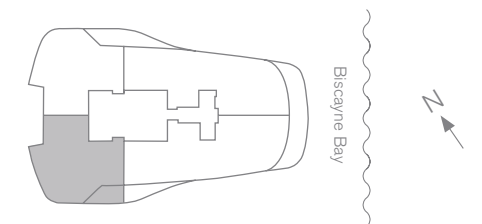


Levels 19-29

| | SQ FT | M ² |
|----------|-------|----------------|
| Interior | 1,995 | 185.3 |
| Exterior | 356 | 33.1 |
| Total | 2,351 | 218.4 |

Levels 30-37

| | SQ FT | M ² |
|----------|-------|----------------|
| Interior | 2,019 | 187.6 |
| Exterior | 356 | 33.1 |
| Total | 2,375 | 220.7 |



Brickell
REALTY GROUP

2071 NW 112th Avenue, Miami, FL 33172

www.brickell-realty.com/Una.html

Oral representation cannot be relied upon as correctly stating representations of the developer. Pictures of homes and condos may not reflect the final products which may vary. Dimensions, specifications, improvements, rendering, plans, land uses, materials, amenities, prices, and availability are subject to change at the developer's discretion without notice.

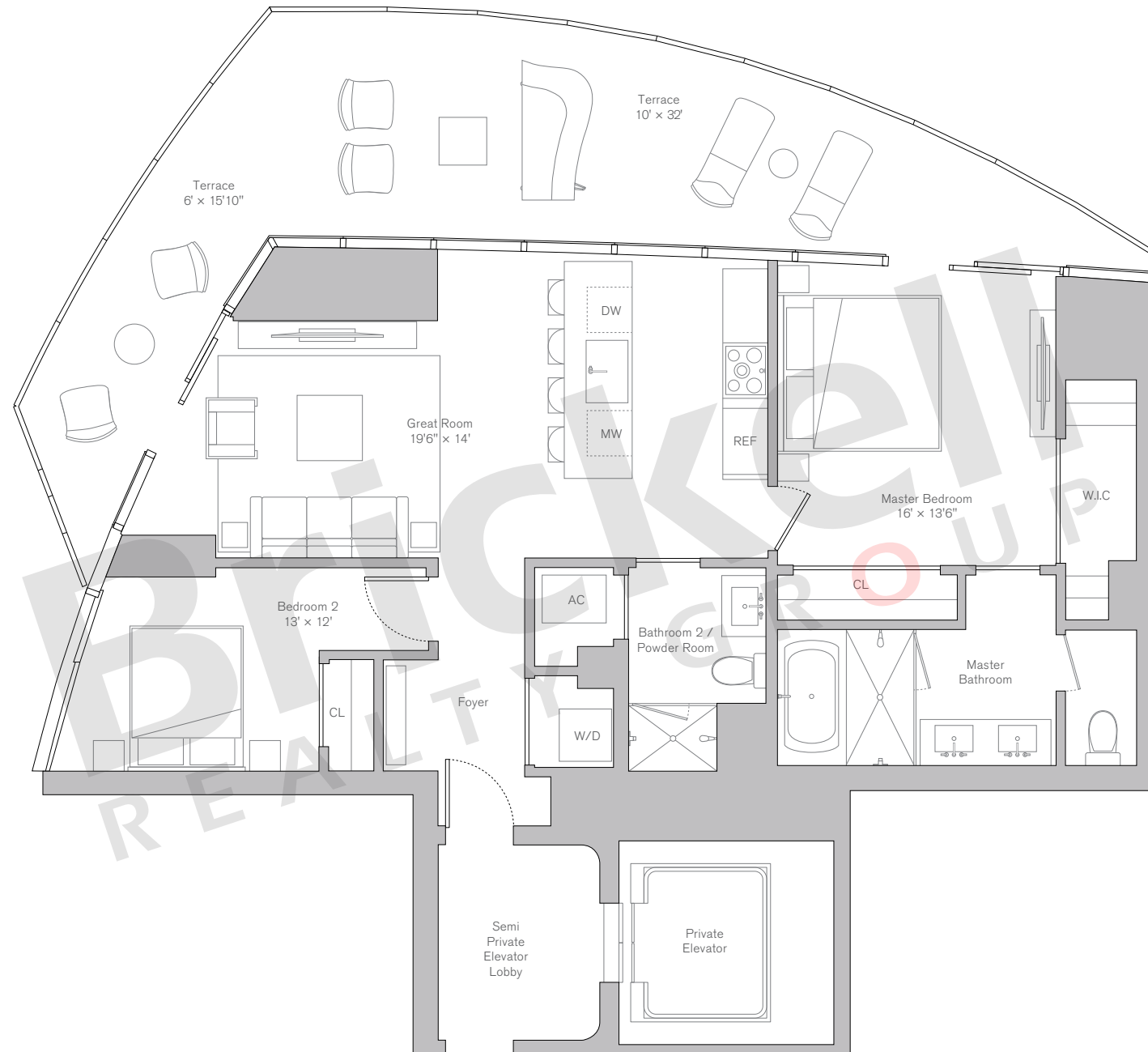
Stated dimensions are approximate and measured to the exterior boundaries of the exterior walls and the centerline of interior demising walls which in fact vary from the dimensions that would be determined by using the description and definition of the "Unit" set forth in the Declaration (which generally only includes the interior airspace between the perimeter walls and excludes interior structural components).

Una

North West Residence

Levels 05-16 Unit 04

2 Bedrooms · 2 Baths

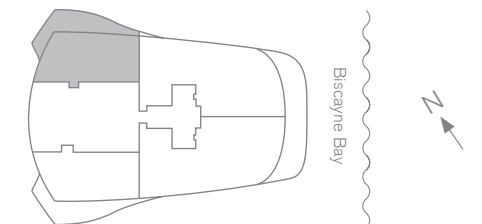


Levels 05-14

| | SQ FT | M ² |
|----------|-------|----------------|
| Interior | 1,098 | 102.0 |
| Exterior | 404 | 37.5 |
| Total | 1,502 | 139.5 |

Levels 15-16

| | SQ FT | M ² |
|----------|-------|----------------|
| Interior | 1,133 | 105.3 |
| Exterior | 416 | 38.6 |
| Total | 1,549 | 143.9 |



Brickell
REALTY GROUP

2071 NW 112th Avenue, Miami, FL 33172

www.brickell-realty.com/Una.html

Oral representation cannot be relied upon as correctly stating representations of the developer. Pictures of homes and condos may not reflect the final products which may vary. Dimensions, specifications, improvements, rendering, plans, land uses, materials, amenities, prices, and availability are subject to change at the developer's discretion without notice.

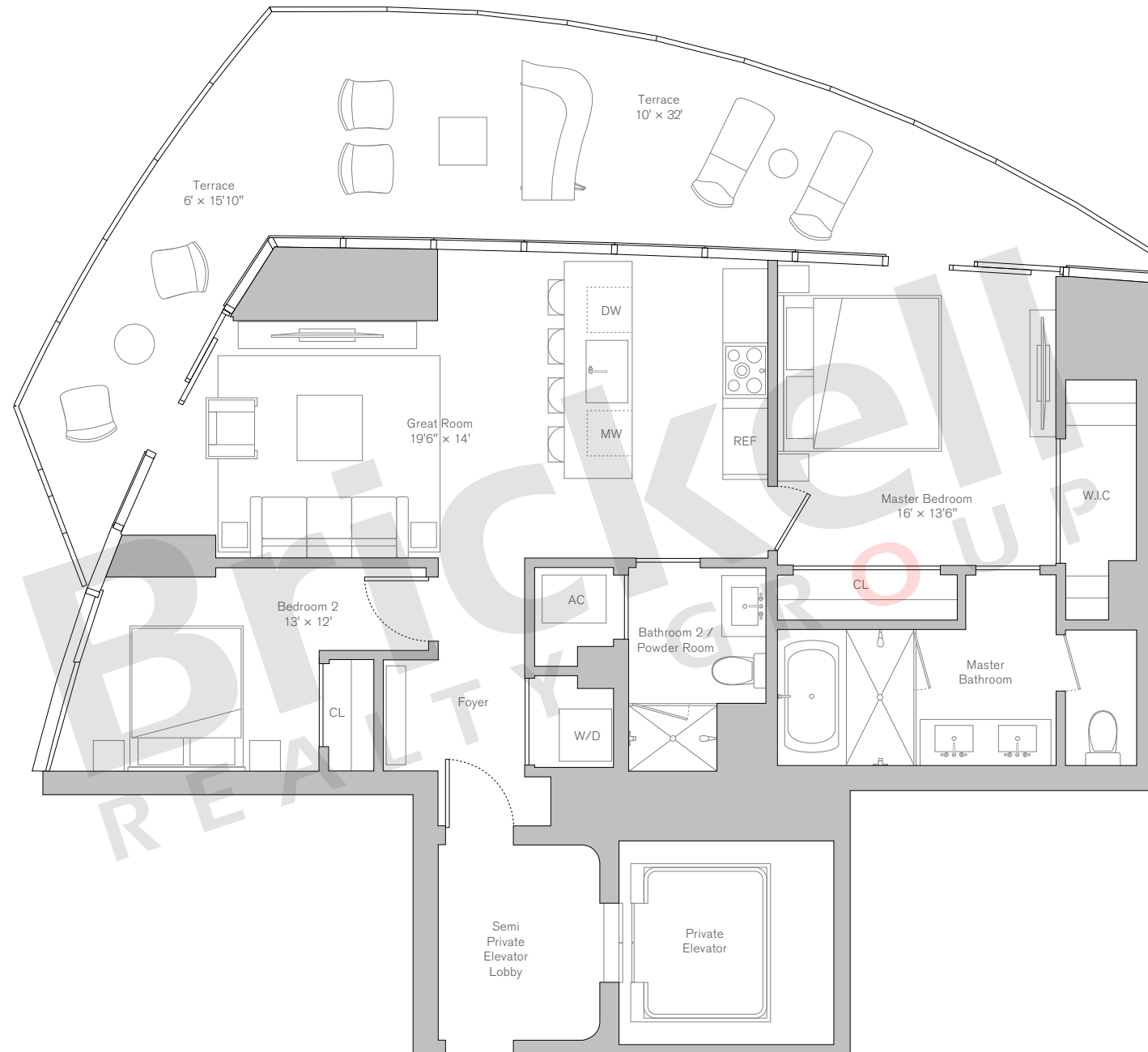
Stated dimensions are approximate and measured to the exterior boundaries of the exterior walls and the centerline of interior demising walls which in fact vary from the dimensions that would be determined by using the description and definition of the "Unit" set forth in the Declaration (which generally only includes the interior airspace between the perimeter walls and excludes interior structural components).

Una

North West Residence

Levels 05-16 Unit 04

2 Bedrooms · 2 Baths

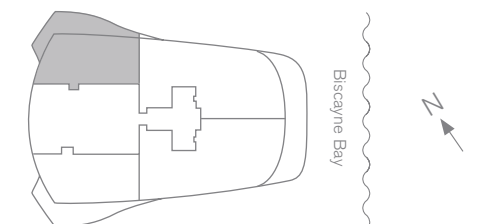


Levels 05-14

| | SQ FT | M ² |
|----------|-------|----------------|
| Interior | 1,098 | 102.0 |
| Exterior | 404 | 37.5 |
| Total | 1,502 | 139.5 |

Levels 15-16

| | SQ FT | M ² |
|----------|-------|----------------|
| Interior | 1,133 | 105.3 |
| Exterior | 416 | 38.6 |
| Total | 1,549 | 143.9 |



Brickell
REALTY GROUP

2071 NW 112th Avenue, Miami, FL 33172

www.brickell-realty.com/Una.html

Oral representation cannot be relied upon as correctly stating representations of the developer. Pictures of homes and condos may not reflect the final products which may vary. Dimensions, specifications, improvements, rendering, plans, land uses, materials, amenities, prices, and availability are subject to change at the developer's discretion without notice.

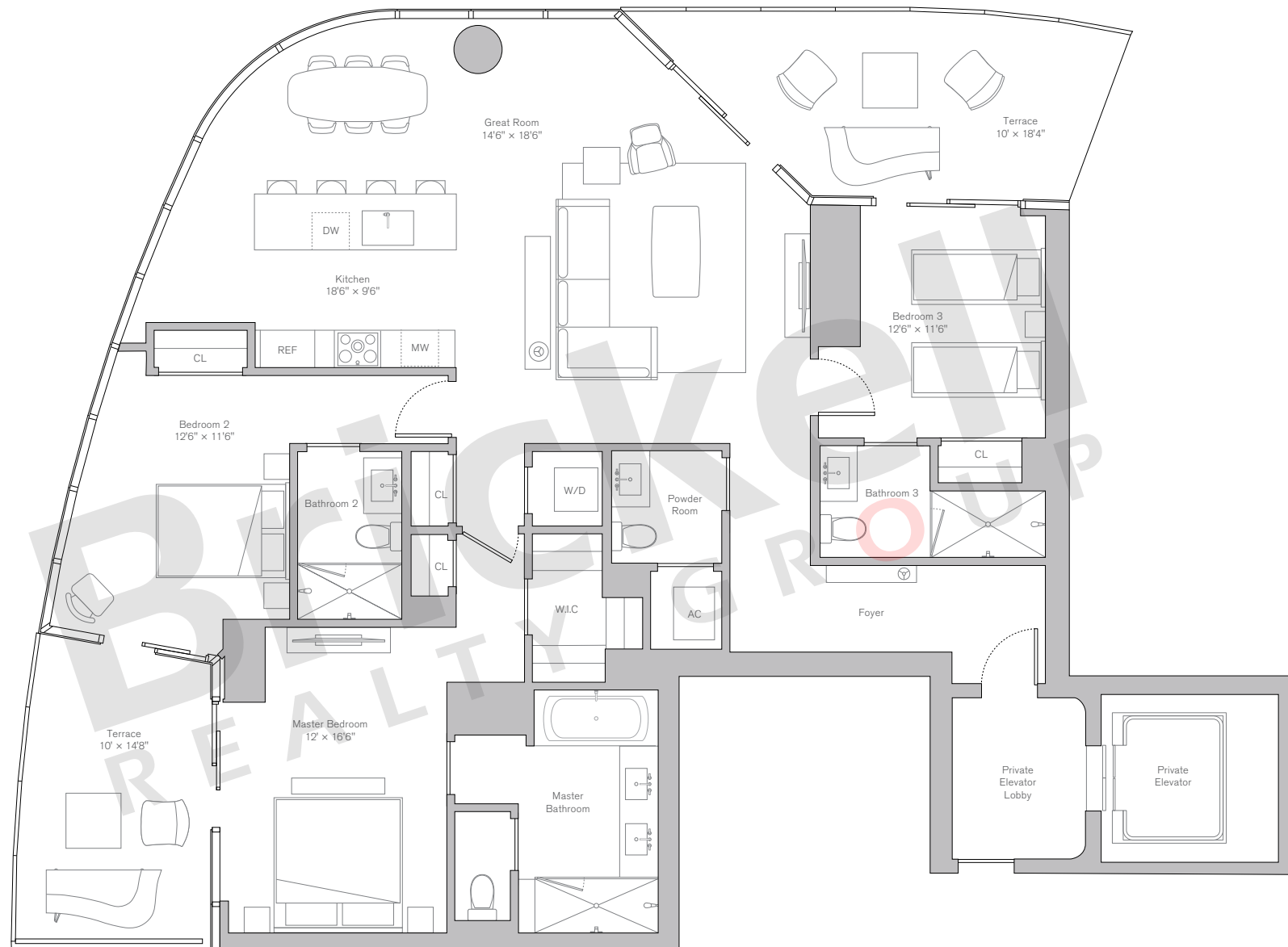
Stated dimensions are approximate and measured to the exterior boundaries of the exterior walls and the centerline of interior demising walls which in fact vary from the dimensions that would be determined by using the description and definition of the "Unit" set forth in the Declaration (which generally only includes the interior airspace between the perimeter walls and excludes interior structural components).

Una

North West Residence

Levels 19-37 Unit 04

3 Bedrooms · 3.5 Baths

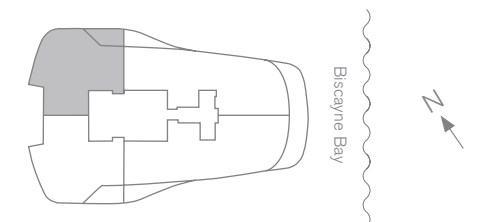


Levels 19-29

| | SQ FT | M ² |
|----------|-------|----------------|
| Interior | 1,915 | 177.9 |
| Exterior | 356 | 33.1 |
| Total | 2,271 | 211.0 |

Levels 30-37

| | SQ FT | M ² |
|----------|-------|----------------|
| Interior | 1,939 | 180.1 |
| Exterior | 356 | 33.1 |
| Total | 2,295 | 213.2 |



Brickell
REALTY GROUP

2071 NW 112th Avenue, Miami, FL 33172

www.brickell-realty.com/Una.html

Oral representation cannot be relied upon as correctly stating representations of the developer. Pictures of homes and condos may not reflect the final products which may vary. Dimensions, specifications, improvements, rendering, plans, land uses, materials, amenities, prices, and availability are subject to change at the developer's discretion without notice.

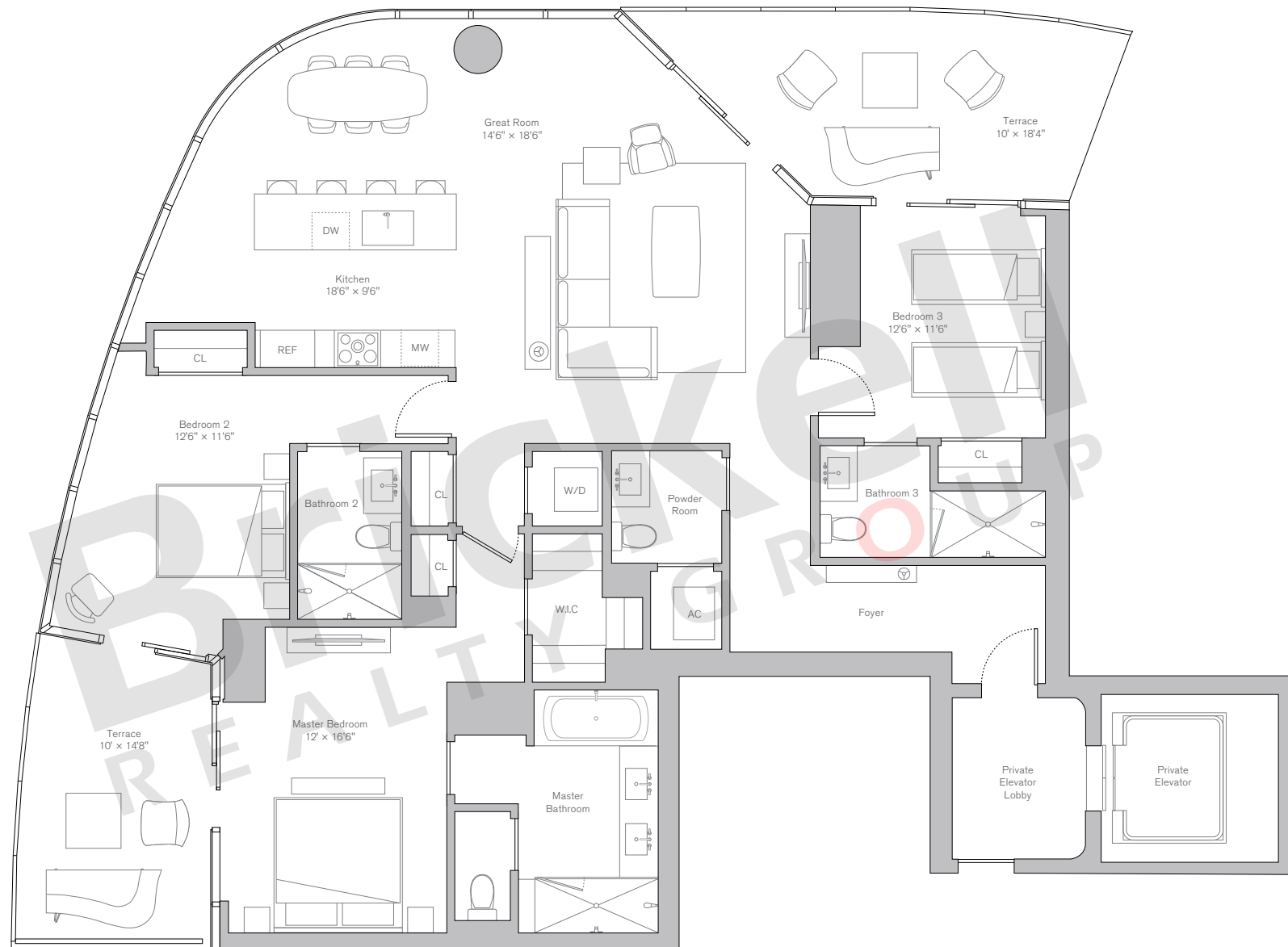
Stated dimensions are approximate and measured to the exterior boundaries of the exterior walls and the centerline of interior demising walls which in fact vary from the dimensions that would be determined by using the description and definition of the "Unit" set forth in the Declaration (which generally only includes the interior airspace between the perimeter walls and excludes interior structural components).

Una

North West Residence

Levels 19-37 Unit 04

3 Bedrooms · 3.5 Baths

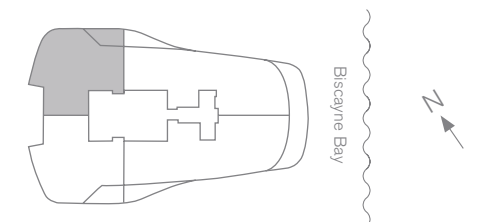


Levels 19-29

| | SQ FT | M ² |
|----------|-------|----------------|
| Interior | 1,915 | 177.9 |
| Exterior | 356 | 33.1 |
| Total | 2,271 | 211.0 |

Levels 30-37

| | SQ FT | M ² |
|----------|-------|----------------|
| Interior | 1,939 | 180.1 |
| Exterior | 356 | 33.1 |
| Total | 2,295 | 213.2 |



Brickell
REALTY GROUP

2071 NW 112th Avenue, Miami, FL 33172

www.brickell-realty.com/Una.html

Oral representation cannot be relied upon as correctly stating representations of the developer. Pictures of homes and condos may not reflect the final products which may vary. Dimensions, specifications, improvements, rendering, plans, land uses, materials, amenities, prices, and availability are subject to change at the developer's discretion without notice.

Stated dimensions are approximate and measured to the exterior boundaries of the exterior walls and the centerline of interior demising walls which in fact vary from the dimensions that would be determined by using the description and definition of the "Unit" set forth in the Declaration (which generally only includes the interior airspace between the perimeter walls and excludes interior structural components).