

# AQUABELLA

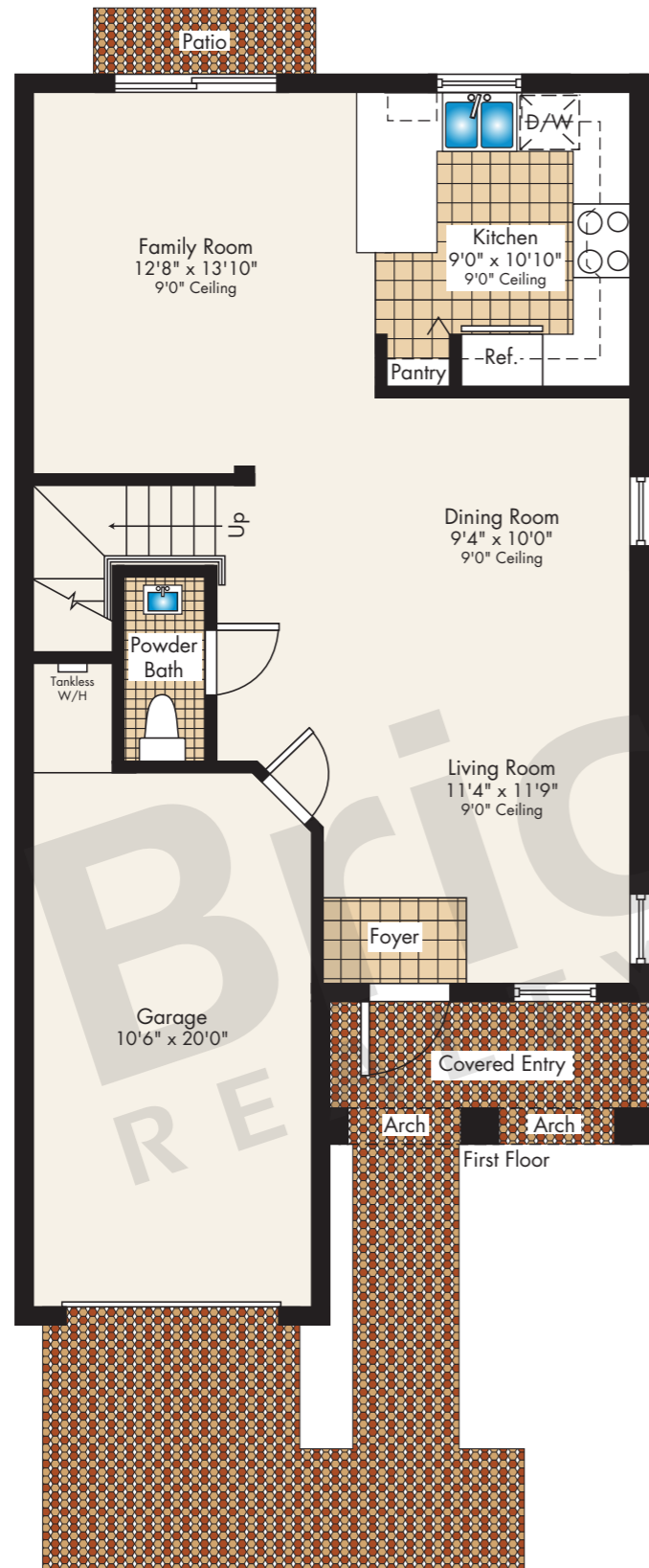
## Eden

Single Family Home from  
The Blossom Collection

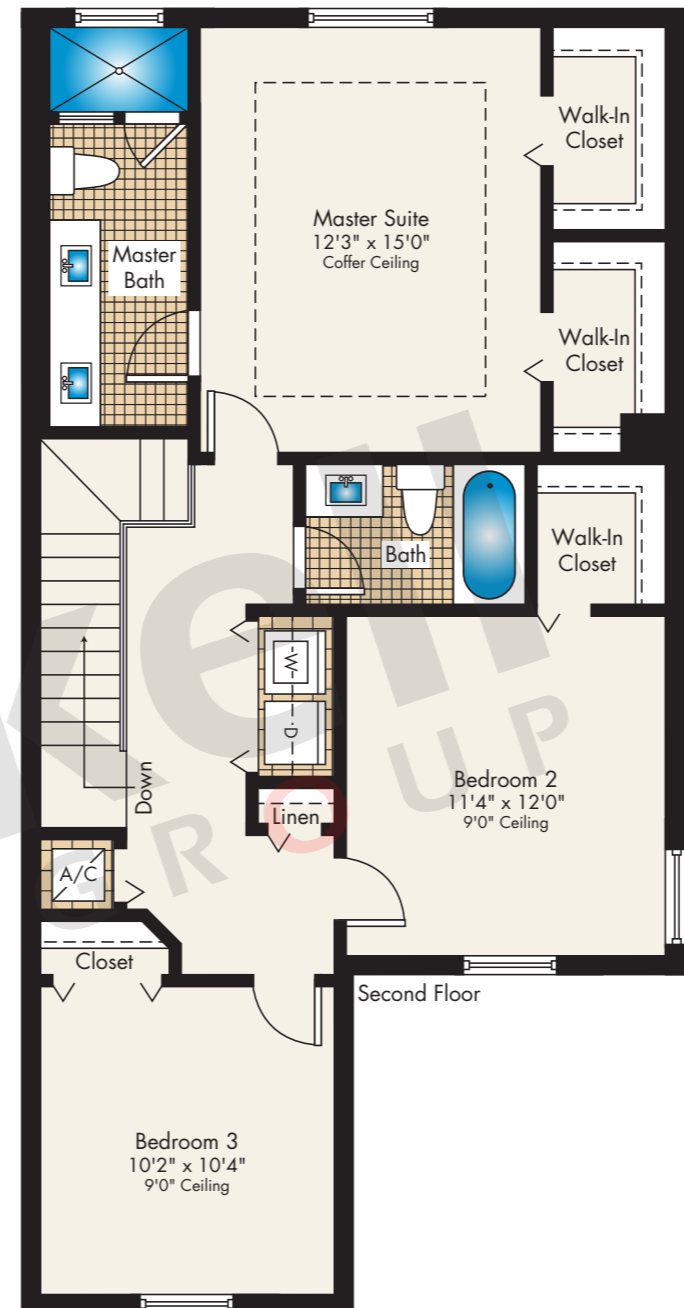
2-story

3 Bedrooms · 2.5 Baths  
Family Room · Garage

	SQ FT	M <sup>2</sup>
A/C Area	1,639	152.3
Covered Entry	61	5.7
Garage	230	21.4
<b>Total</b>	<b>1,930</b>	<b>179.4</b>



Window at End Unit Only



Window at End Unit Only

## Brickell REALTY GROUP

2071 NW 112th Avenue, Miami, FL 33172

[www.brickell-realty.com/Aquabella.html](http://www.brickell-realty.com/Aquabella.html)

Oral representation cannot be relied upon as correctly stating representations of the developer. Pictures of homes and condos may not reflect the final products which may vary. Dimensions, specifications, improvements, rendering, plans, land uses, materials, amenities, prices, and availability are subject to change at the developer's discretion without notice.

Stated dimensions are approximate and measured to the exterior boundaries of the exterior walls and the centerline of interior demising walls which in fact vary from the dimensions that would be determined by using the description and definition of the "Unit" set forth in the Declaration (which generally only includes the interior airspace between the perimeter walls and excludes interior structural components).

# AQUABELLA

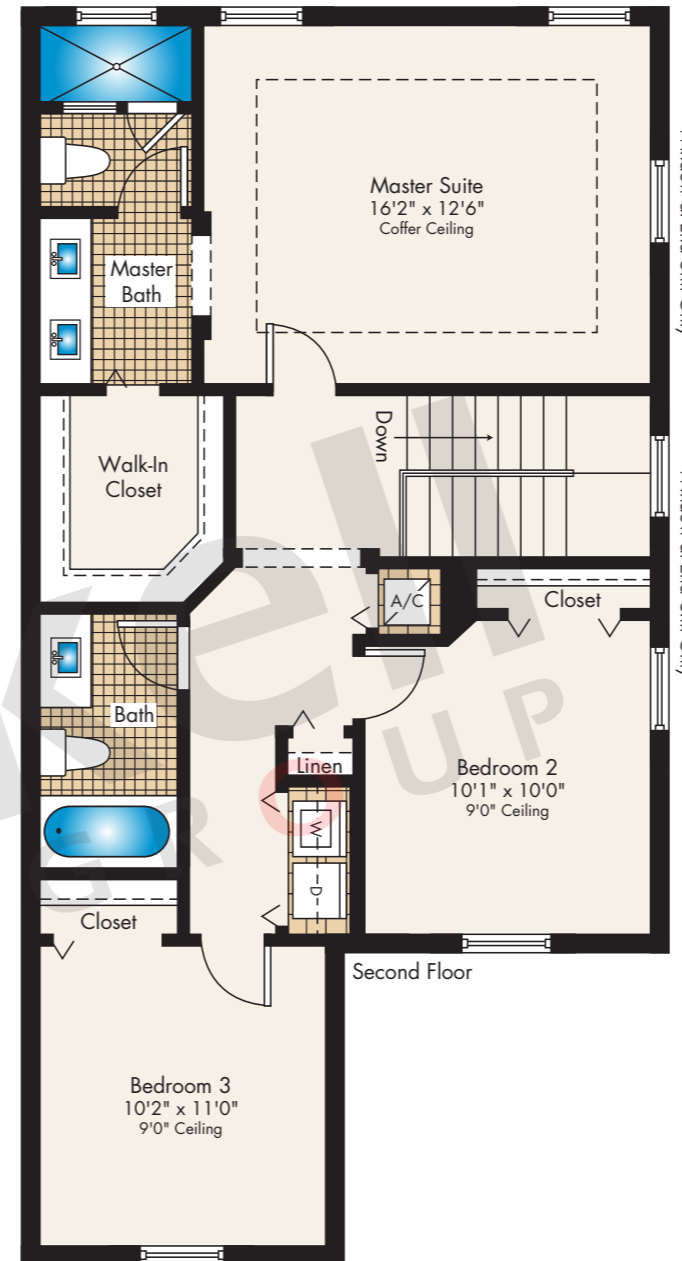
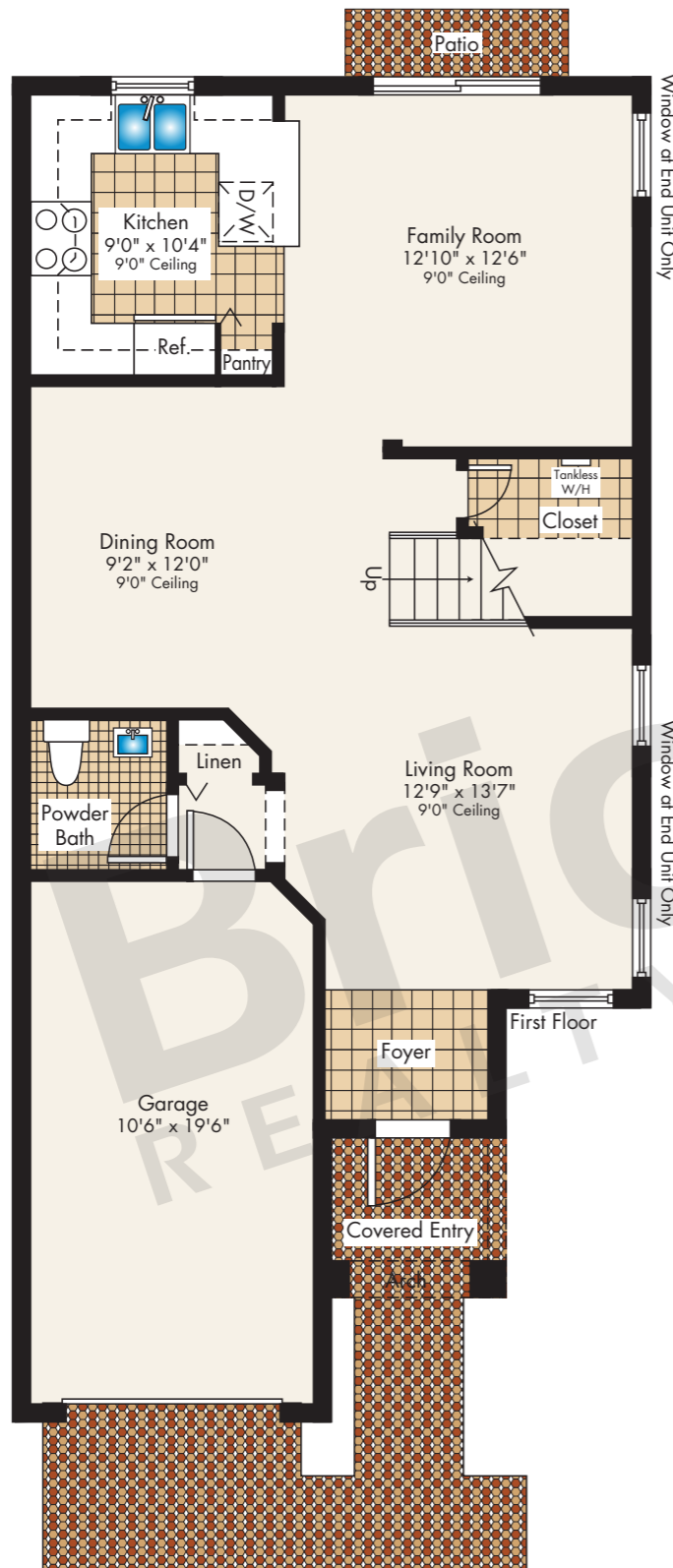
## Hyacinth

Single Family Home from  
The Blossom Collection

2-story

3 Bedrooms · 2.5 Baths  
Family Room · Garage

	SQ FT	M <sup>2</sup>
A/C Area	1,707	158.6
Covered Entry	38	3.5
Garage	225	20.9
<b>Total</b>	<b>1,970</b>	<b>183.0</b>



## Brickell

REALTY GROUP

2071 NW 112th Avenue, Miami, FL 33172

[www.brickell-realty.com/Aquabella.html](http://www.brickell-realty.com/Aquabella.html)

Oral representation cannot be relied upon as correctly stating representations of the developer. Pictures of homes and condos may not reflect the final products which may vary. Dimensions, specifications, improvements, rendering, plans, land uses, materials, amenities, prices, and availability are subject to change at the developer's discretion without notice.

Stated dimensions are approximate and measured to the exterior boundaries of the exterior walls and the centerline of interior demising walls which in fact vary from the dimensions that would be determined by using the description and definition of the "Unit" set forth in the Declaration (which generally only includes the interior airspace between the perimeter walls and excludes interior structural components).

# AQUABELLA

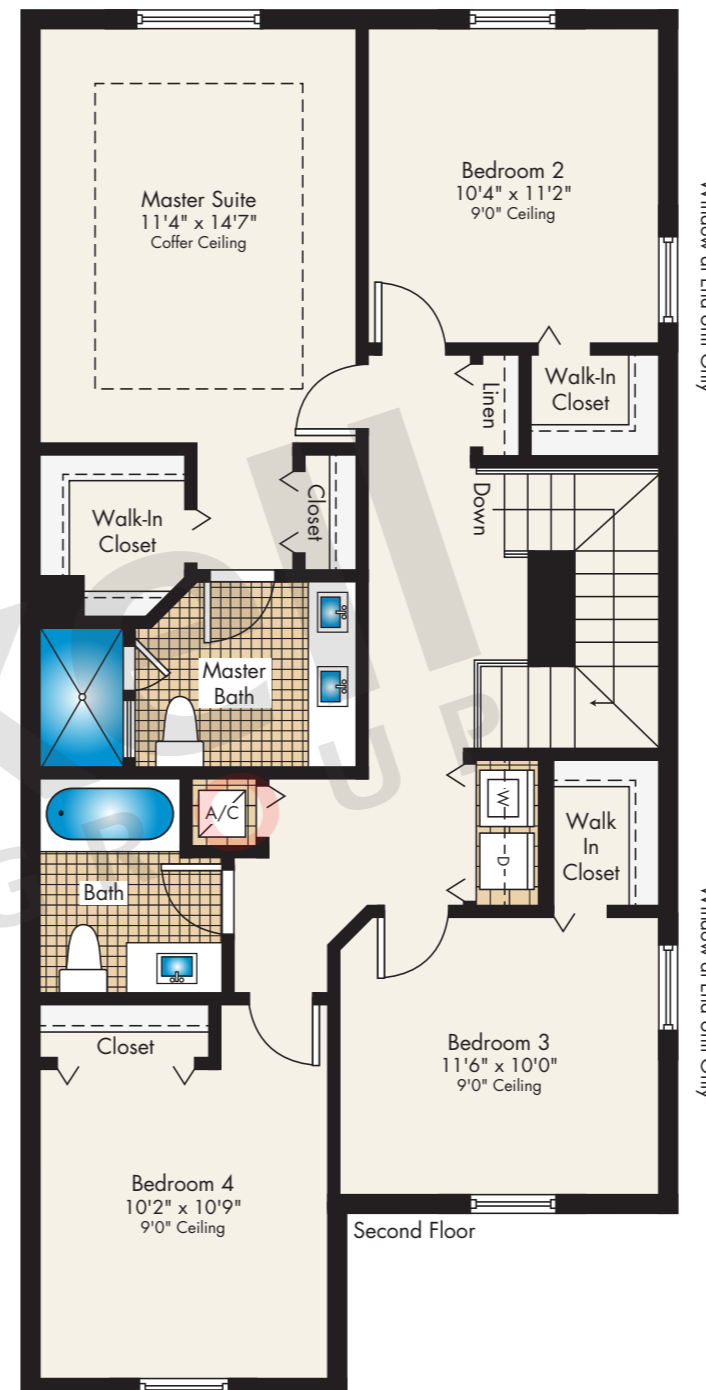
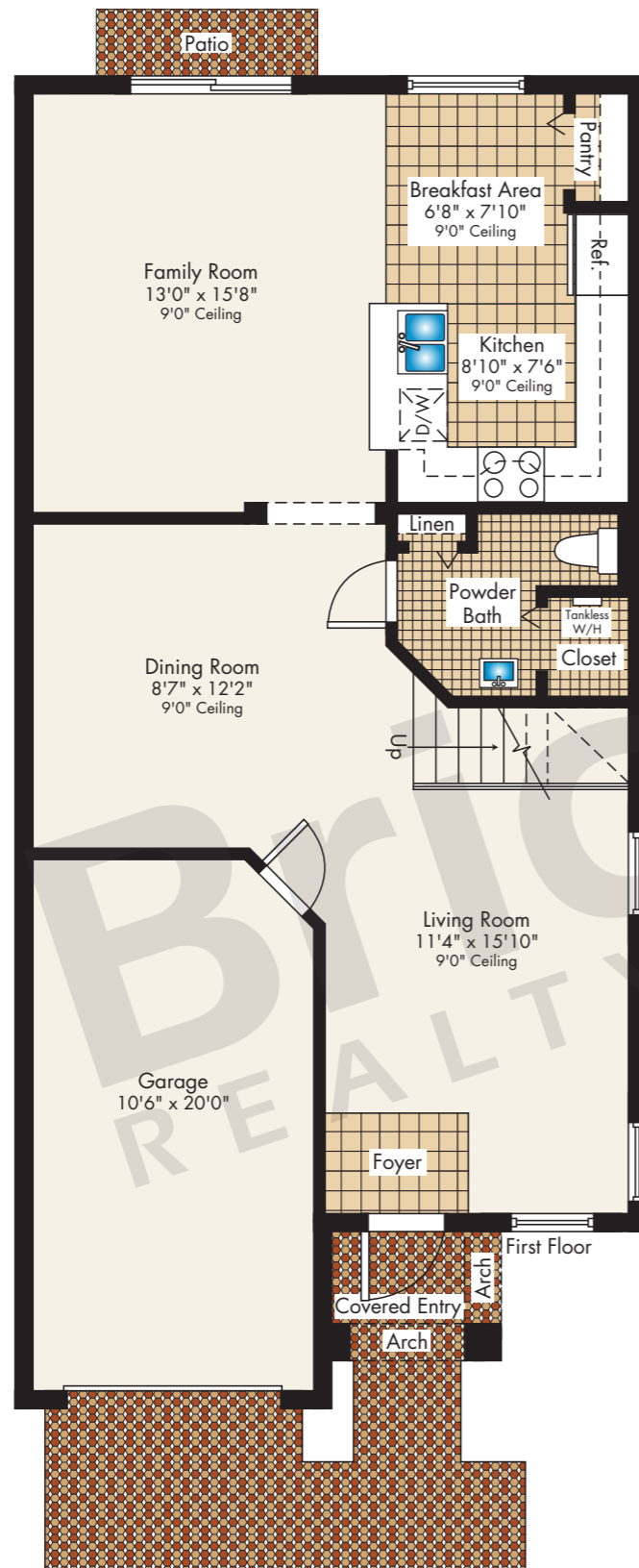
## Kelby

Single Family Home from  
The Blossom Collection

2-story

4 Bedrooms · 2.5 Baths  
Breakfast Area · Family Room  
Garage

	SQ FT	M <sup>2</sup>
A/C Area	1,921	178.5
Covered Entry	31	2.9
Garage	225	20.9
<b>Total</b>	<b>2,177</b>	<b>202.3</b>



## Brickell REALTY GROUP

2071 NW 112th Avenue, Miami, FL 33172

[www.brickell-realty.com/Aquabella.html](http://www.brickell-realty.com/Aquabella.html)

Oral representation cannot be relied upon as correctly stating representations of the developer. Pictures of homes and condos may not reflect the final products which may vary. Dimensions, specifications, improvements, rendering, plans, land uses, materials, amenities, prices, and availability are subject to change at the developer's discretion without notice.

Stated dimensions are approximate and measured to the exterior boundaries of the exterior walls and the centerline of interior demising walls which in fact vary from the dimensions that would be determined by using the description and definition of the "Unit" set forth in the Declaration (which generally only includes the interior airspace between the perimeter walls and excludes interior structural components).

# AQUABELLA

## Lily

Single Family Home from  
The Blossom Collection

2-story

3 Bedrooms · 3 Baths  
Family Room · Garage  
(Optional Den/Bedroom 4)

	SQ FT	M <sup>2</sup>
A/C Area	1,961	182.2
Covered Entry	38	3.5
Garage	210	19.5
<b>Total</b>	<b>2,209</b>	<b>205.2</b>



**Brickell**  
REALTY GROUP

2071 NW 112th Avenue, Miami, FL 33172

[www.brickell-realty.com/Aquabella.html](http://www.brickell-realty.com/Aquabella.html)

Oral representation cannot be relied upon as correctly stating representations of the developer. Pictures of homes and condos may not reflect the final products which may vary. Dimensions, specifications, improvements, rendering, plans, land uses, materials, amenities, prices, and availability are subject to change at the developer's discretion without notice.

Stated dimensions are approximate and measured to the exterior boundaries of the exterior walls and the centerline of interior demising walls which in fact vary from the dimensions that would be determined by using the description and definition of the "Unit" set forth in the Declaration (which generally only includes the interior airspace between the perimeter walls and excludes interior structural components).