

AQUABELLA

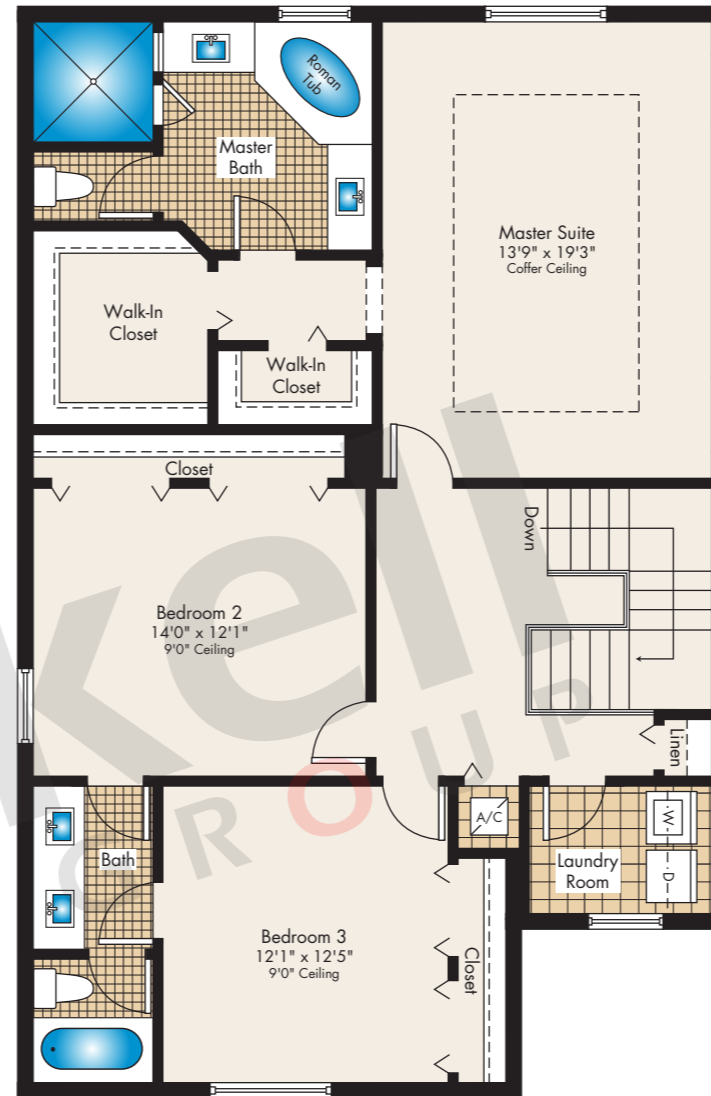
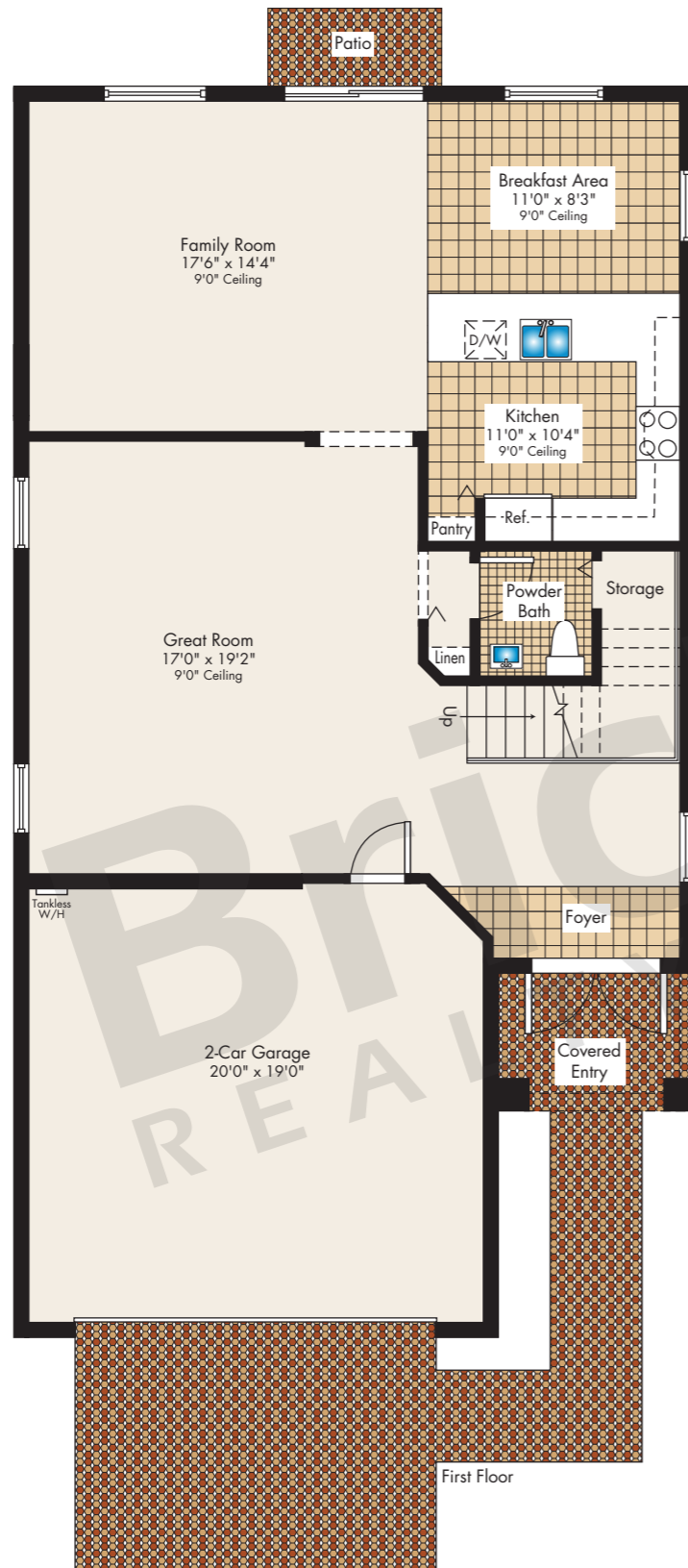
Dalis

Single Family Home from
The Waterways Collection

2-story

3 Bedrooms · 2.5 Baths
Family Room · Breakfast Area
2-Car Garage

	SQ FT	M ²
A/C Area	2,417	224.5
Covered Entry	52	4.8
Garage	415	38.6
Total	2,884	267.9



Second Floor

Brickell REALTY GROUP

2071 NW 112th Avenue, Miami, FL 33172

www.brickell-realty.com/Aquabella.html

Oral representation cannot be relied upon as correctly stating representations of the developer. Pictures of homes and condos may not reflect the final products which may vary. Dimensions, specifications, improvements, rendering, plans, land uses, materials, amenities, prices, and availability are subject to change at the developer's discretion without notice.

Stated dimensions are approximate and measured to the exterior boundaries of the exterior walls and the centerline of interior demising walls which in fact vary from the dimensions that would be determined by using the description and definition of the "Unit" set forth in the Declaration (which generally only includes the interior airspace between the perimeter walls and excludes interior structural components).

AQUABELLA

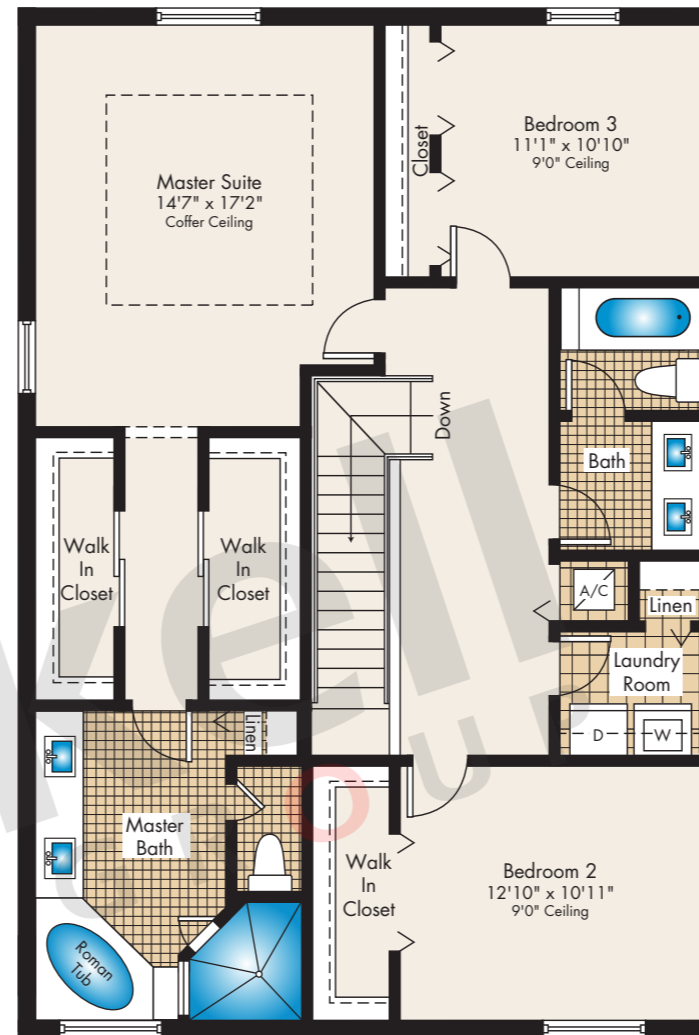
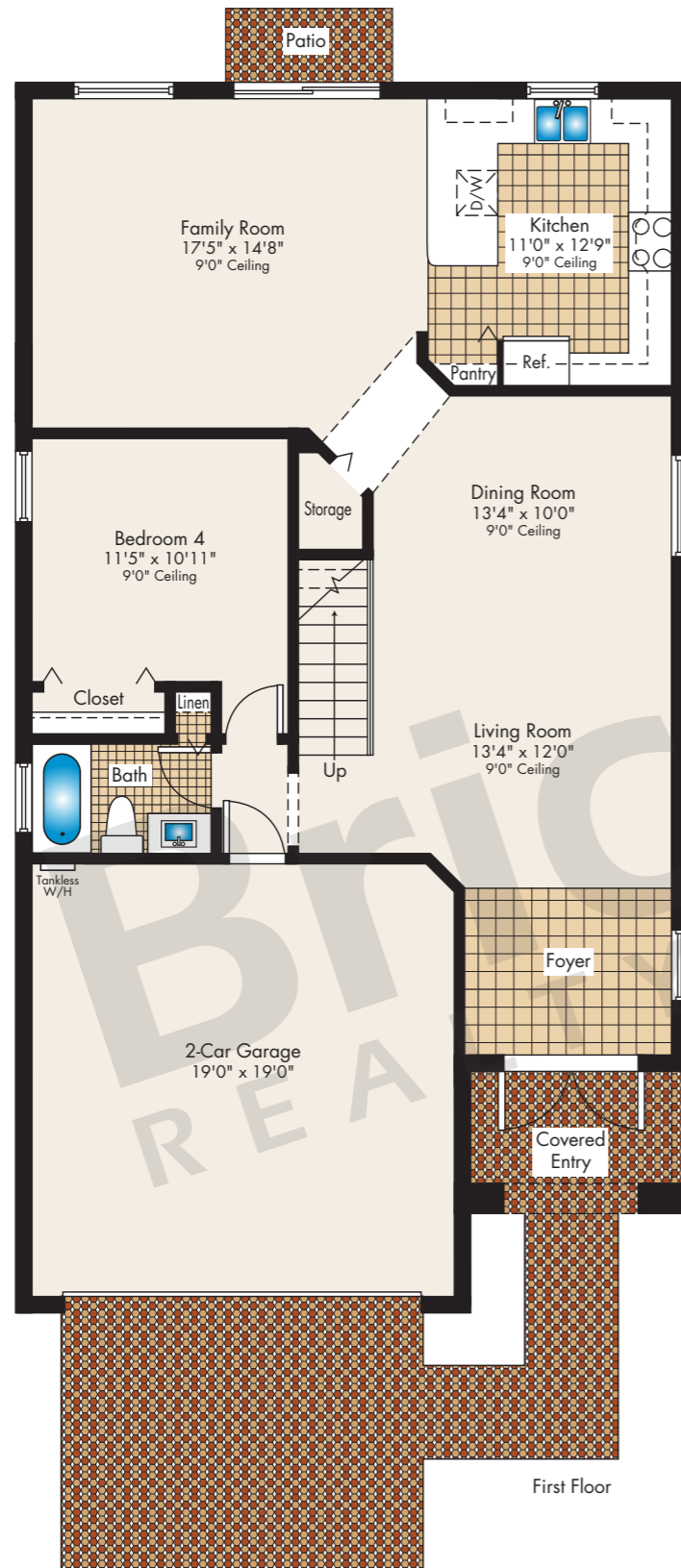
Neptune

Single Family Home from
The Waterways Collection

2-story

4 Bedrooms · 3 Baths
Family Room · 2-Car Garage

	SQ FT	M ²
A/C Area	2,479	230.3
Covered Entry	61	5.7
Garage	403	37.4
Total	2,943	273.4



Second Floor

Brickell

REALTY GROUP

2071 NW 112th Avenue, Miami, FL 33172

www.brickell-realty.com/Aquabella.html

Oral representation cannot be relied upon as correctly stating representations of the developer. Pictures of homes and condos may not reflect the final products which may vary. Dimensions, specifications, improvements, rendering, plans, land uses, materials, amenities, prices, and availability are subject to change at the developer's discretion without notice.

Stated dimensions are approximate and measured to the exterior boundaries of the exterior walls and the centerline of interior demising walls which in fact vary from the dimensions that would be determined by using the description and definition of the "Unit" set forth in the Declaration (which generally only includes the interior airspace between the perimeter walls and excludes interior structural components).

AQUABELLA

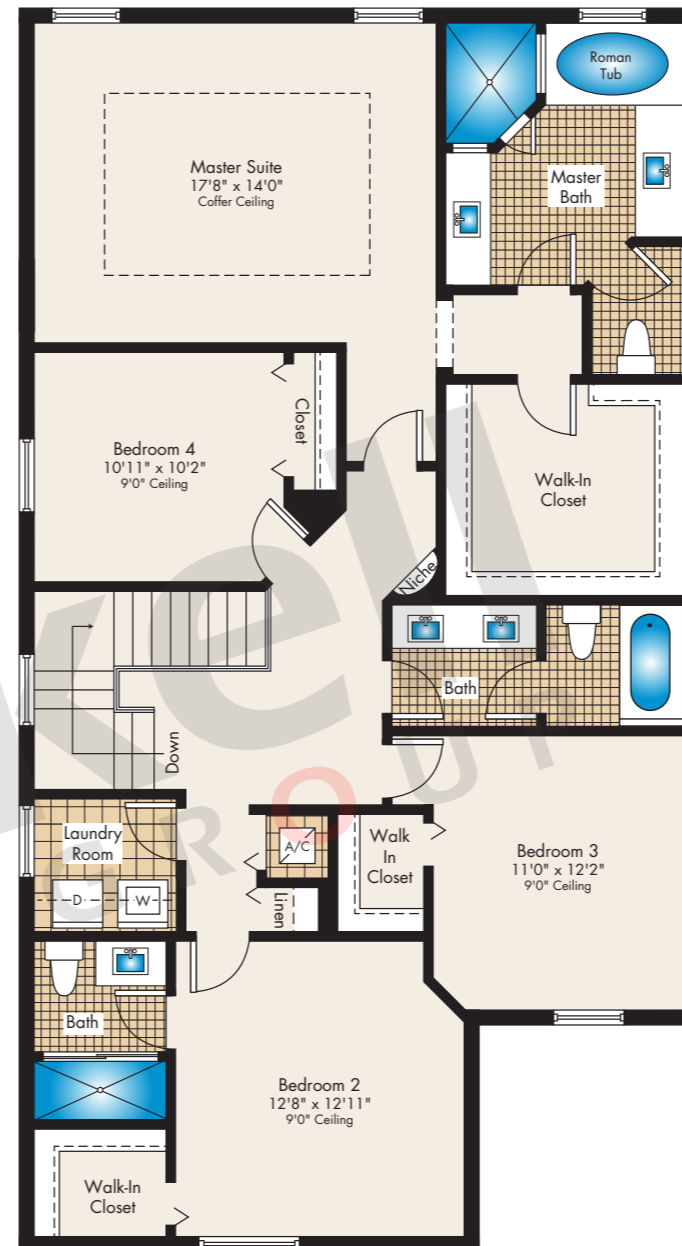
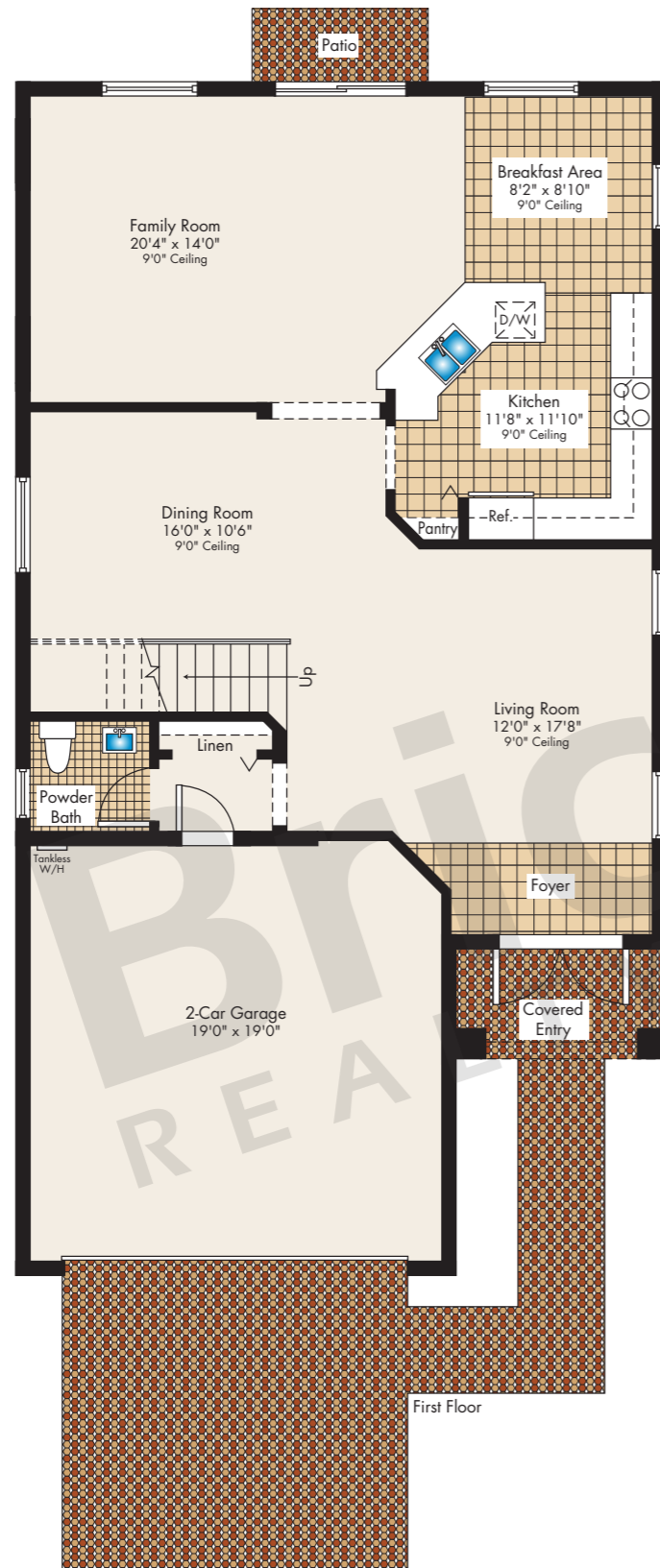
Oceana

Single Family Home from
The Waterways Collection

2-story

4 Bedrooms · 3.5 Baths
Family Room · Breakfast Area
2-Car Garage

	SQ FT	M ²
A/C Area	2,662	247.3
Covered Entry	48	4.5
Garage	395	36.7
Total	3,105	288.5



Second Floor

Brickell
REALTY GROUP

2071 NW 112th Avenue, Miami, FL 33172

www.brickell-realty.com/Aquabella.html

Oral representation cannot be relied upon as correctly stating representations of the developer. Pictures of homes and condos may not reflect the final products which may vary. Dimensions, specifications, improvements, rendering, plans, land uses, materials, amenities, prices, and availability are subject to change at the developer's discretion without notice.

Stated dimensions are approximate and measured to the exterior boundaries of the exterior walls and the centerline of interior demising walls which in fact vary from the dimensions that would be determined by using the description and definition of the "Unit" set forth in the Declaration (which generally only includes the interior airspace between the perimeter walls and excludes interior structural components).

AQUABELLA

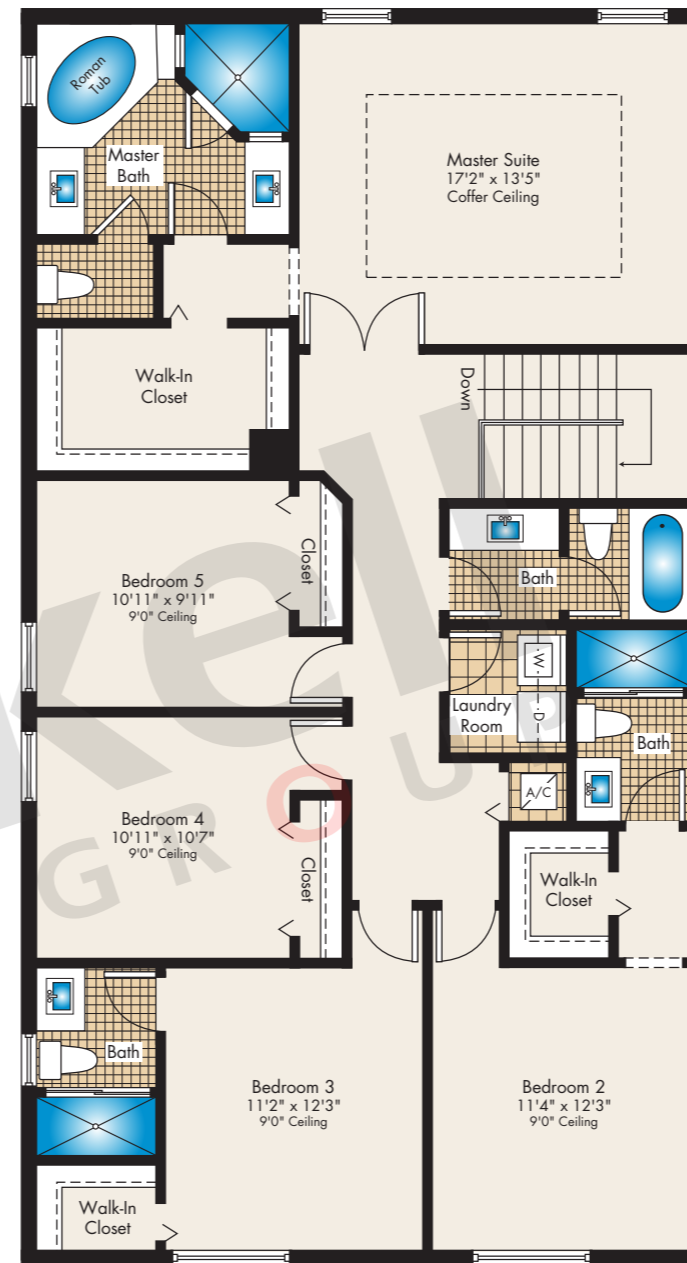
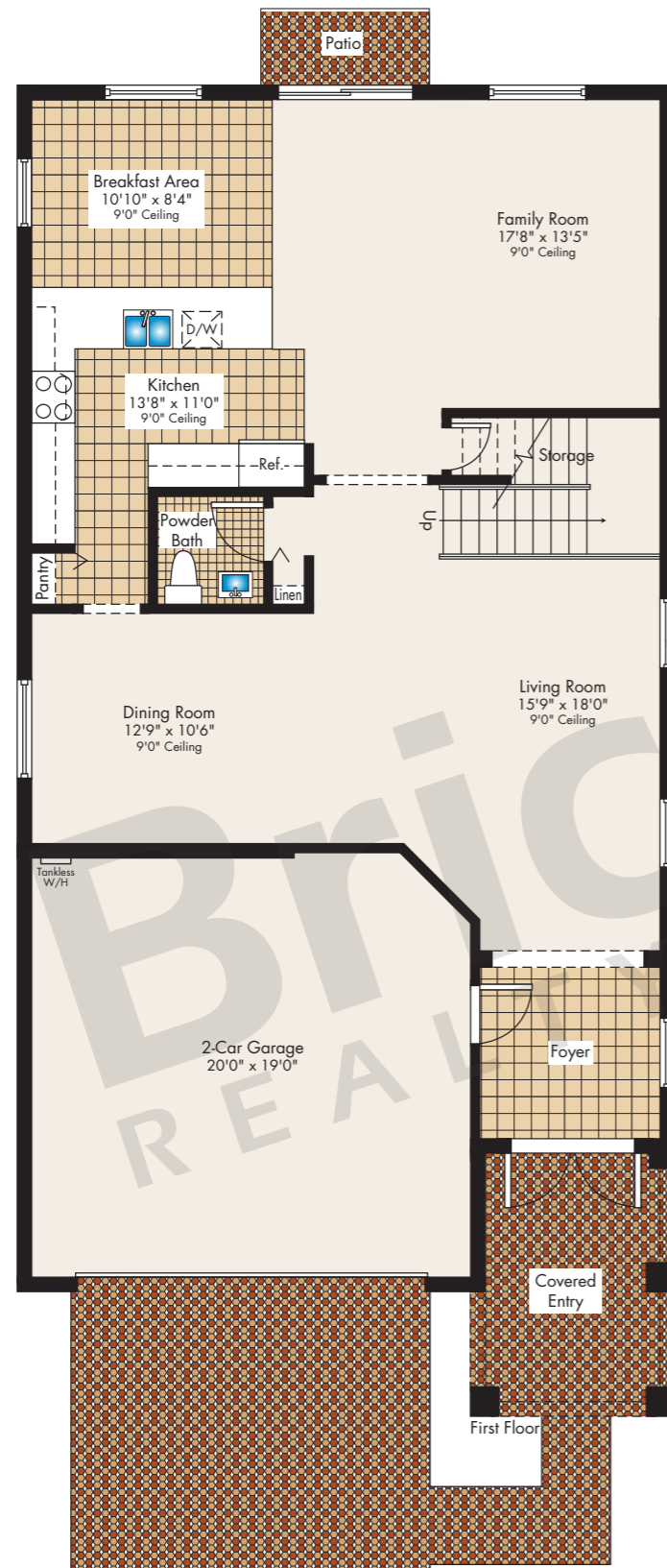
Turquesa

Single Family Home from
The Waterways Collection

2-story

5 Bedrooms · 4.5 Baths
Family Room · Breakfast Area
2-Car Garage

	SQ FT	M ²
A/C Area	2,837	263.6
Covered Entry	104	9.7
Garage	408	37.9
Total	3,349	311.2



Second Floor

Brickell
REALTY GROUP

2071 NW 112th Avenue, Miami, FL 33172

www.brickell-realty.com/Aquabella.html

Oral representation cannot be relied upon as correctly stating representations of the developer. Pictures of homes and condos may not reflect the final products which may vary. Dimensions, specifications, improvements, rendering, plans, land uses, materials, amenities, prices, and availability are subject to change at the developer's discretion without notice.

Stated dimensions are approximate and measured to the exterior boundaries of the exterior walls and the centerline of interior demising walls which in fact vary from the dimensions that would be determined by using the description and definition of the "Unit" set forth in the Declaration (which generally only includes the interior airspace between the perimeter walls and excludes interior structural components).