

Selene

OCEANFRONT RESIDENCES

FORT LAUDERDALE

South Tower — Azure Residence

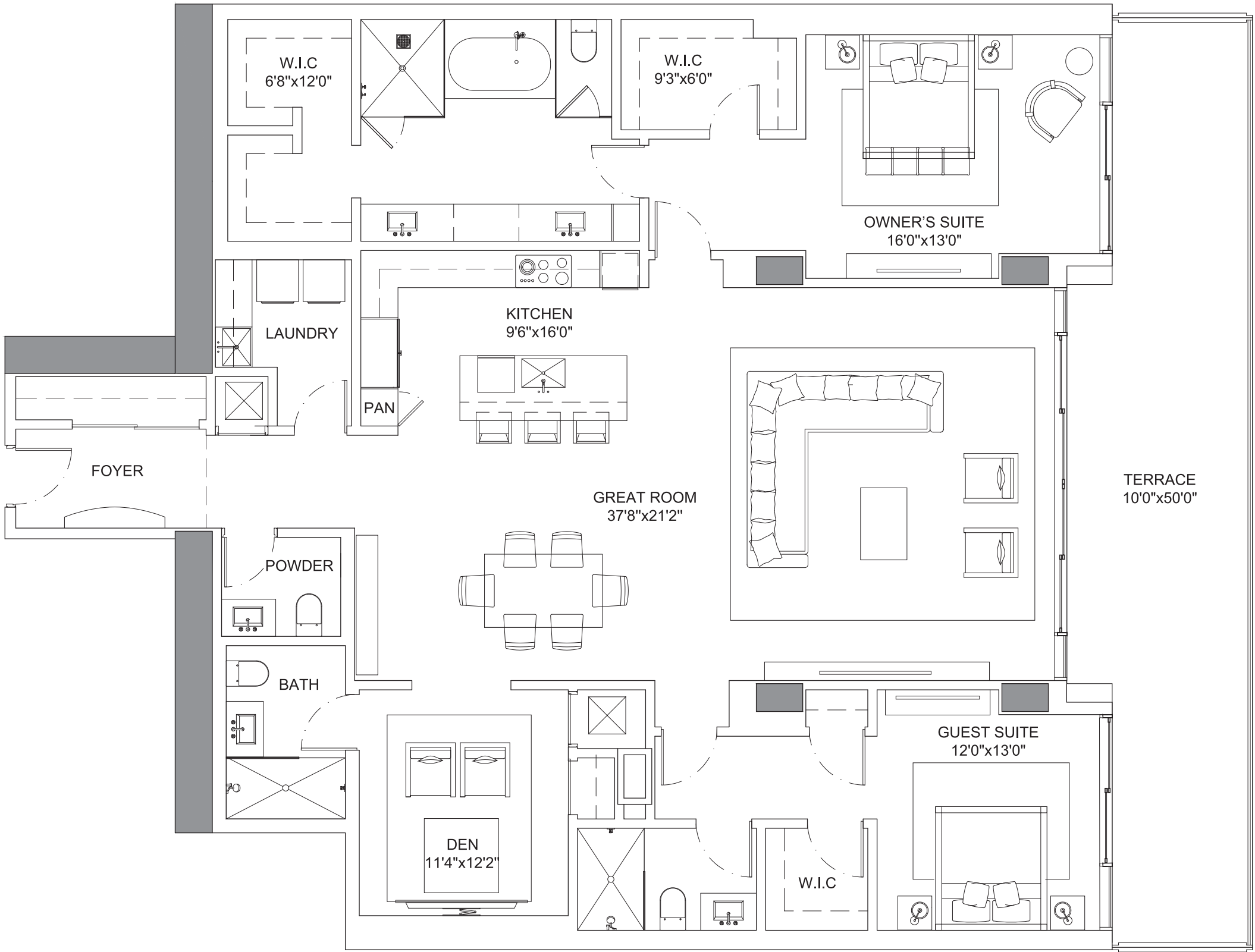
SOUTH TOWER

AZURE

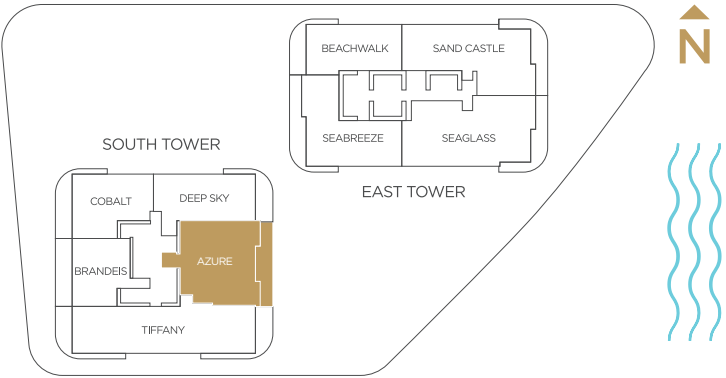
RESIDENCE

Specifications

2 Bedrooms 3.5 Bathrooms Den	
Interior	2,423 SQFT
Exterior	436 SQFT
Total Area	2,859 SQFT

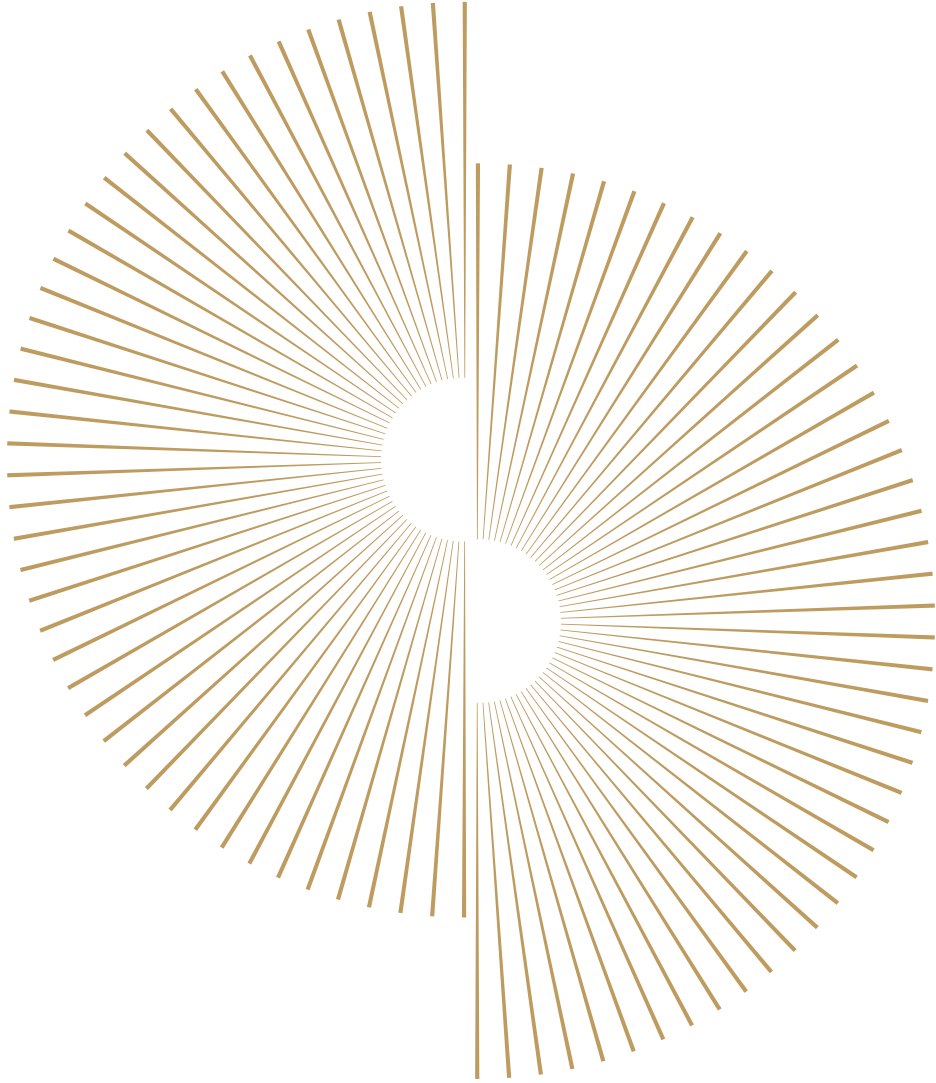


*Preliminary Draft - Version 1





Preview Gallery located in the Douglas Elliman office in the Ritz-Carlton
1 N. Fort Lauderdale Beach Blvd., Fort Lauderdale, FL 33304



Selene

OCEANFRONT RESIDENCES

FORT LAUDERDALE

East Tower — Beachwalk Residence

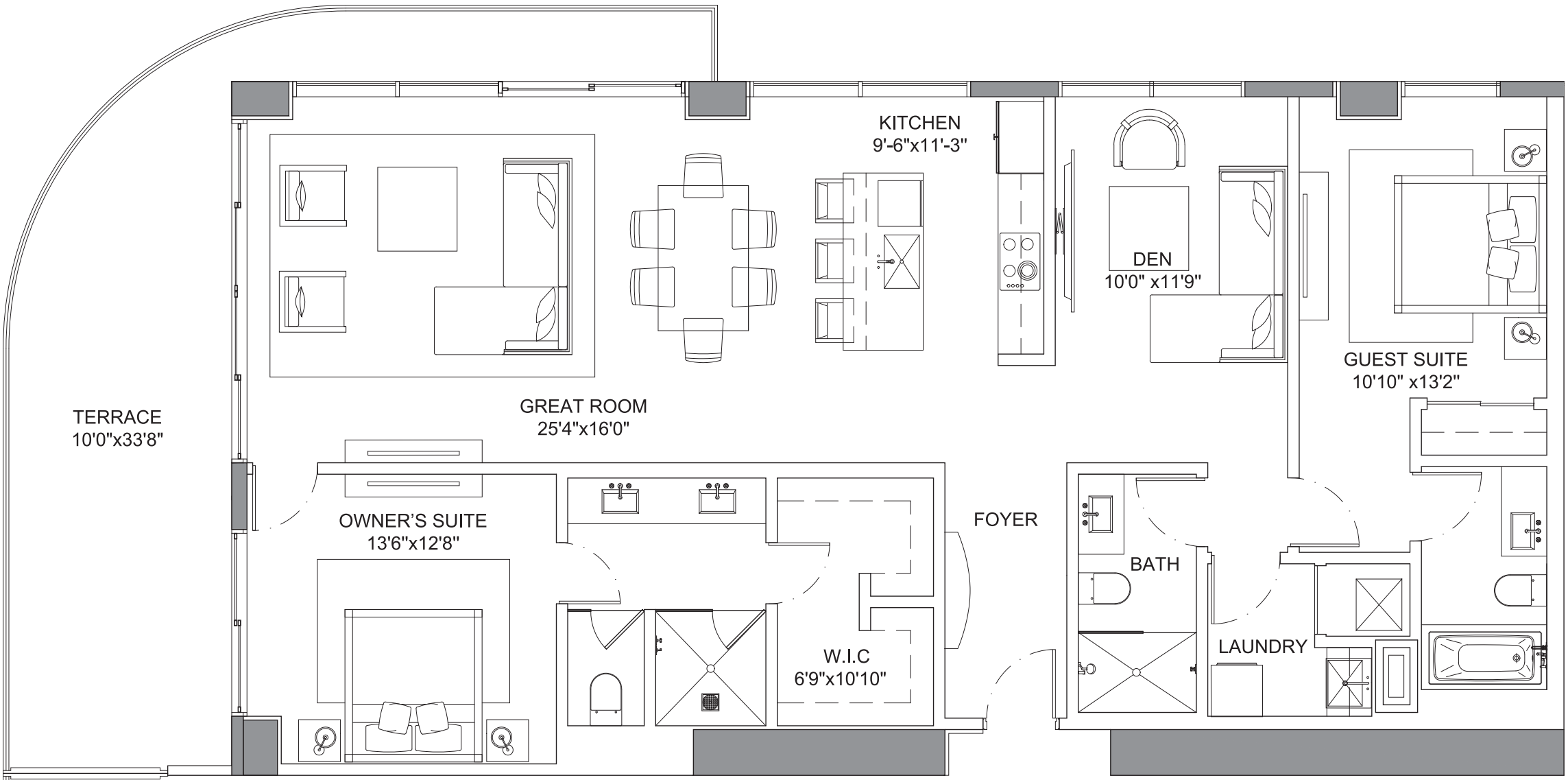
EAST TOWER BEACHWALK RESIDENCE

Selene
OCEANFRONT RESIDENCES
FORT LAUDERDALE

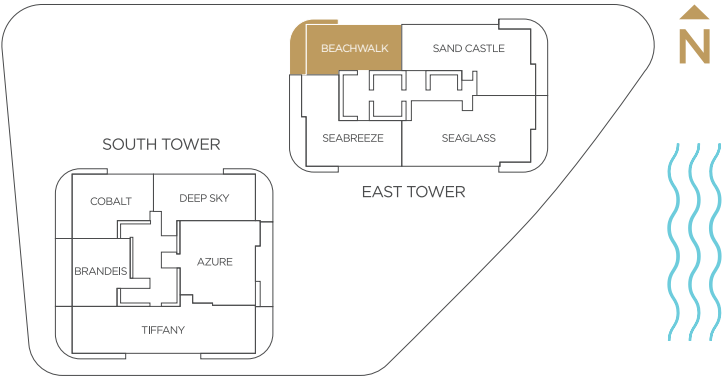
Specifications

2 Bedrooms | 3 Bathrooms | Den

Interior	1,680 SQFT
Exterior	358 SQFT
Total Area	2,038 SQFT



*Preliminary Draft - Version 1

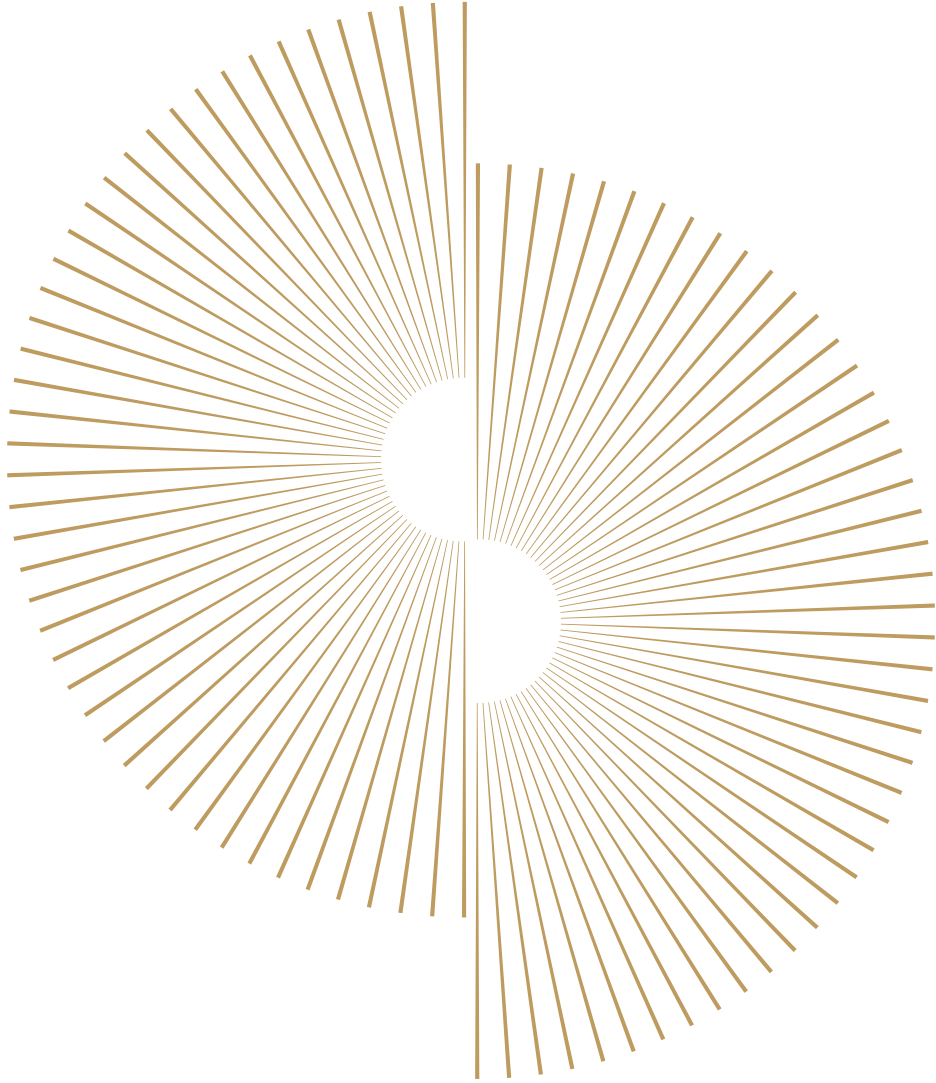


PRESENTED BY
KOLTER DouglasElliman

ORAL REPRESENTATIONS CANNOT BE RELIED UPON AS CORRECTLY STATING REPRESENTATIONS OF THE SELLER. FOR CORRECT REPRESENTATIONS, MAKE REFERENCE TO THIS BROCHURE AND TO THE DOCUMENTS REQUIRED BY SECTION 718.503, FLORIDA STATUTES. TO BE FURNISHED BY A SELLER TO A BUYER OR LESSEE. Prices, terms and availability are subject to change at any time without notice. All dimensions are approximate. The floorplan is subject to change without notice. The seller reserves the absolute right, in its sole judgement and discretion, to substitute appliances, materials, fixtures and equipment of equal or greater value for those specified. There are various methods of calculating the total square footage of a condominium unit, and depending on the method of calculation, the quoted square footage of a condominium unit may vary more than a normal amount. The total condominium square footages as shown in this brochure are based on the "Architctural Method" of measurement which measures the exterior perimeter of the condominium unit, and also includes interior columns and fifty percent of demising walls. The method for calculating residential square footage used in marketing materials is different than the method used for calculating residential square footage in the condominium documents. Please see the Declaration of Condominium for more information. The model shown includes options and upgrades that are not a part of a base residence pricing. © The Kolter Group. March, 2021.



Preview Gallery located in the Douglas Elliman office in the Ritz-Carlton
1 N. Fort Lauderdale Beach Blvd., Fort Lauderdale, FL 33304



Selene

OCEANFRONT RESIDENCES

FORT LAUDERDALE

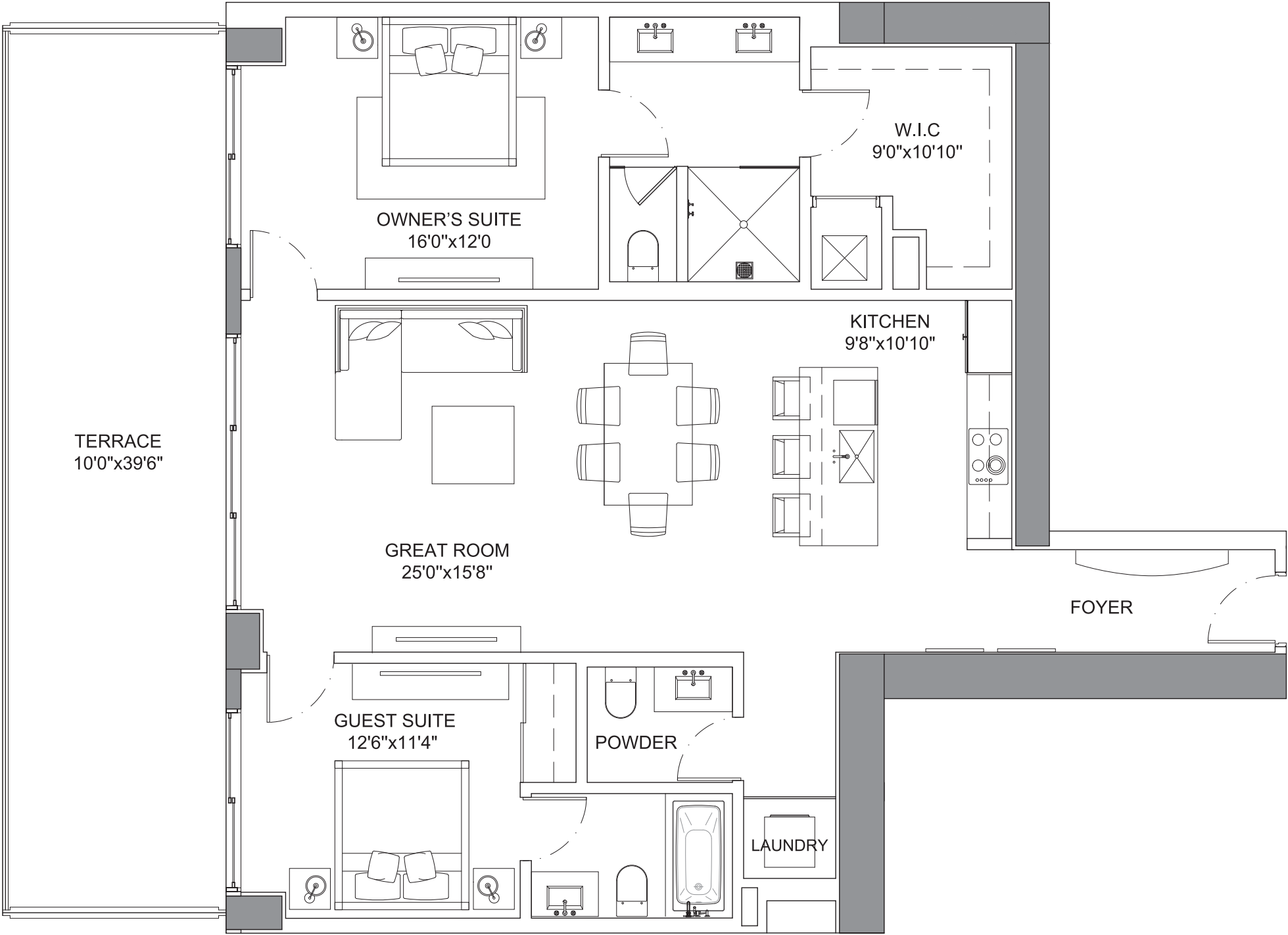
South Tower — Brandeis Residence

SOUTH TOWER BRANDEIS RESIDENCE

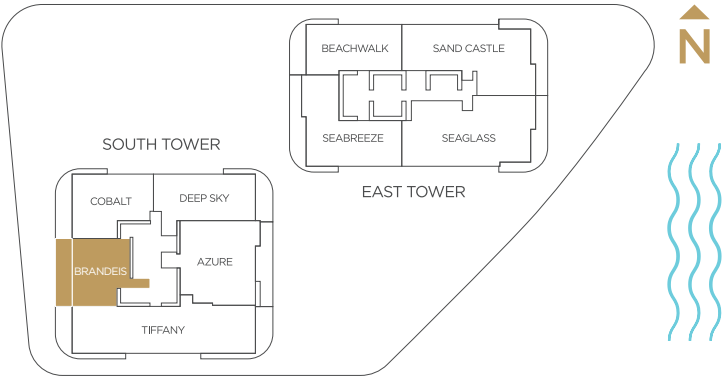
Specifications

2 Bedrooms | 2.5 Bathrooms

Interior	1,395 SQFT
Exterior	396 SQFT
Total Area	1,791 SQFT



*Preliminary Draft - Version 1

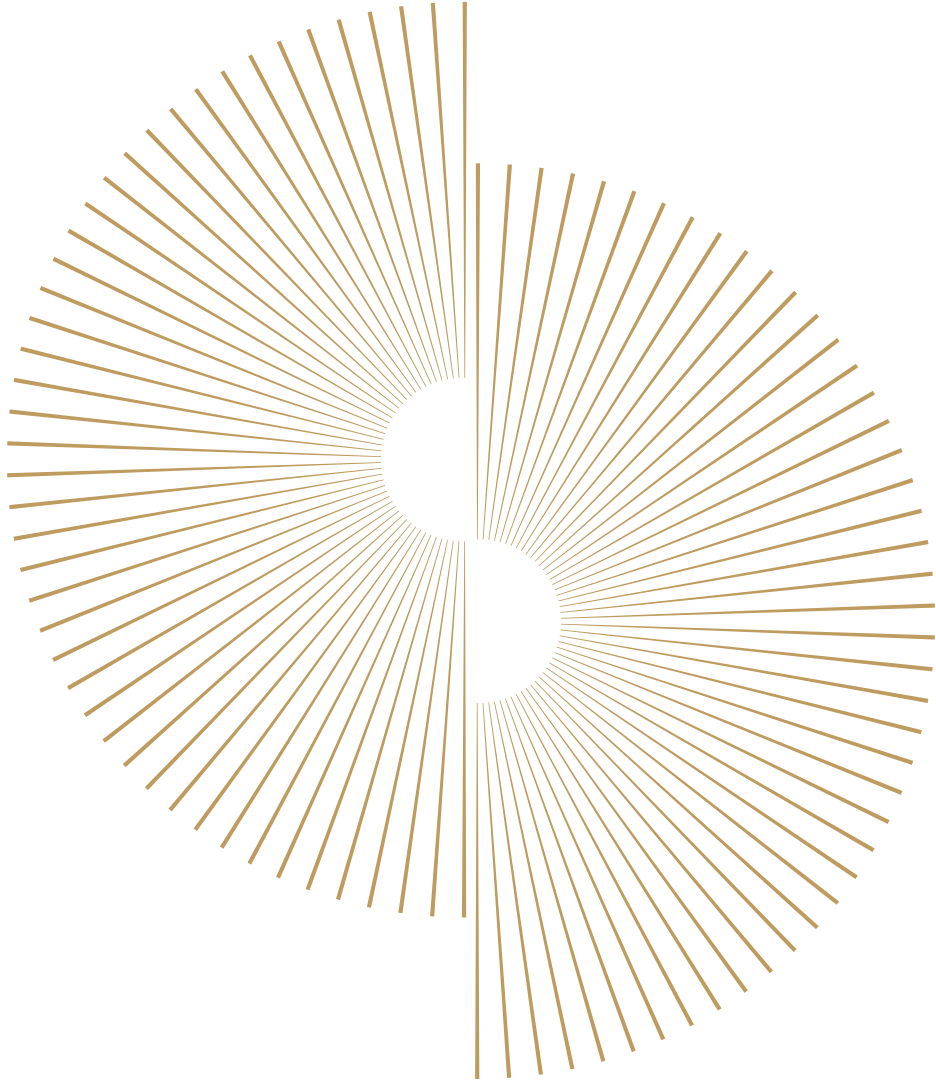


PRESENTED BY
KOLTER

ORAL REPRESENTATIONS CANNOT BE RELIED UPON AS CORRECTLY STATING REPRESENTATIONS OF THE SELLER. FOR CORRECT REPRESENTATIONS, MAKE REFERENCE TO THIS BROCHURE AND TO THE DOCUMENTS REQUIRED BY SECTION 718.503, FLORIDA STATUTES. TO BE FURNISHED BY A SELLER TO A BUYER OR LESSEE. Prices, terms and availability are subject to change at any time without notice. All dimensions are approximate. The floorplan is subject to change without notice. The seller reserves the absolute right, in its sole judgement and discretion, to substitute appliances, materials, fixtures and equipment of equal or greater value for those specified. There are various methods of calculating the total square footage of a condominium unit, and depending on the method of calculation, the quoted square footage of a condominium unit may vary more than a normal amount. The total condominium square footages as shown in this brochure are based on the "Architectural Method" of measurement which measures the exterior perimeter of the condominium unit, and also includes interior columns and fifty percent of demising walls. The method for calculating residential square footage used in marketing materials is different than the method used for calculating residential square footage in the condominium documents. Please see the Declaration of Condominium for more information. The model shown includes options and upgrades that are not a part of a base residence pricing. © The Kolter Group. March, 2021.



Preview Gallery located in the Douglas Elliman office in the Ritz-Carlton
1 N. Fort Lauderdale Beach Blvd., Fort Lauderdale, FL 33304



Selene

OCEANFRONT RESIDENCES

FORT LAUDERDALE

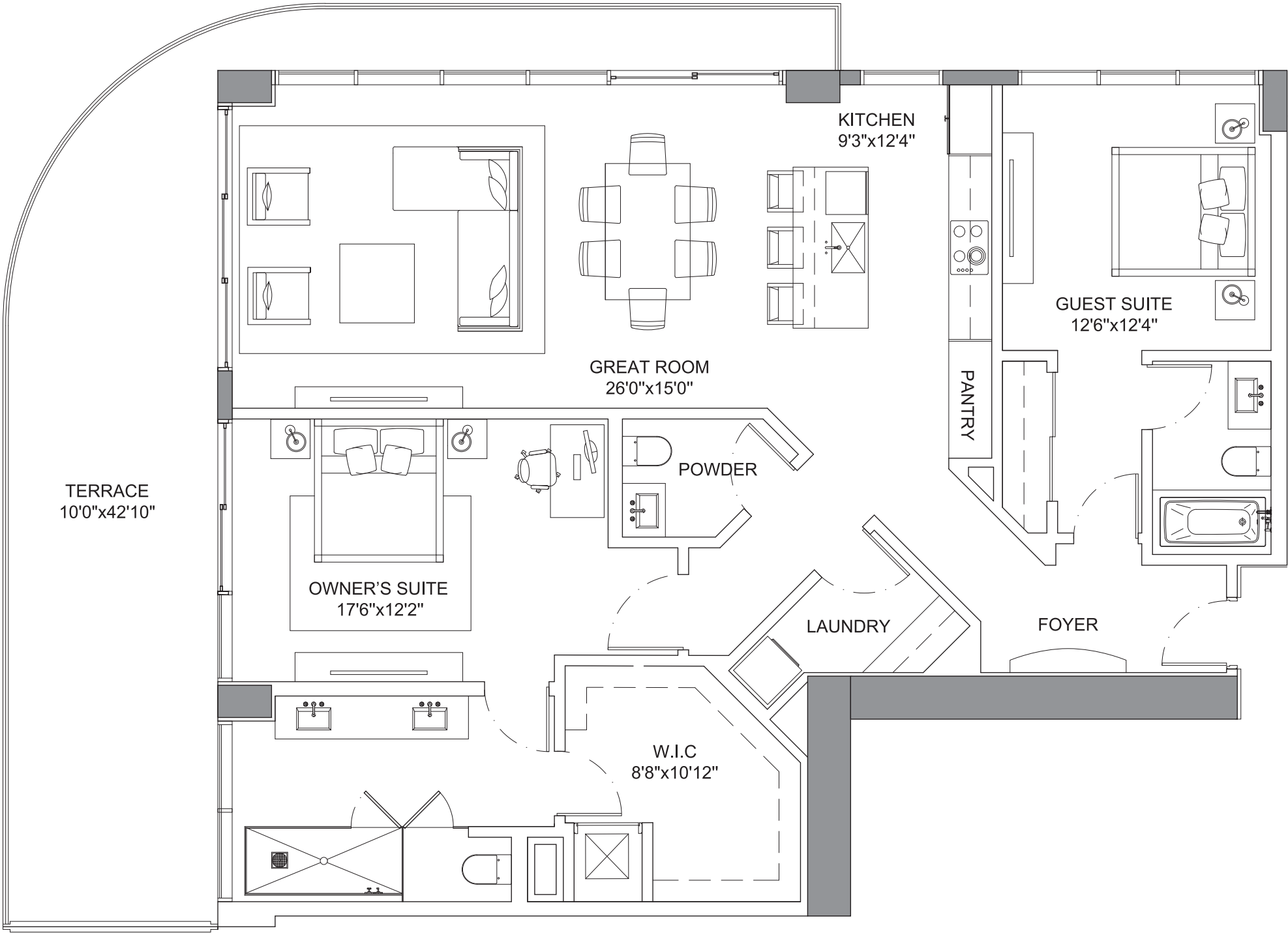
South Tower — Cobalt Residence

SOUTH TOWER COBALT RESIDENCE

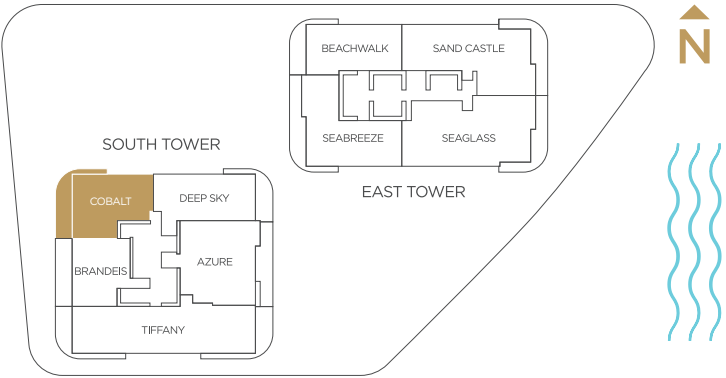
Specifications

2 Bedrooms | 2.5 Bathrooms

Interior	1,680 SQFT
Exterior	472 SQFT
Total Area	2,152 SQFT



*Preliminary Draft - Version 1

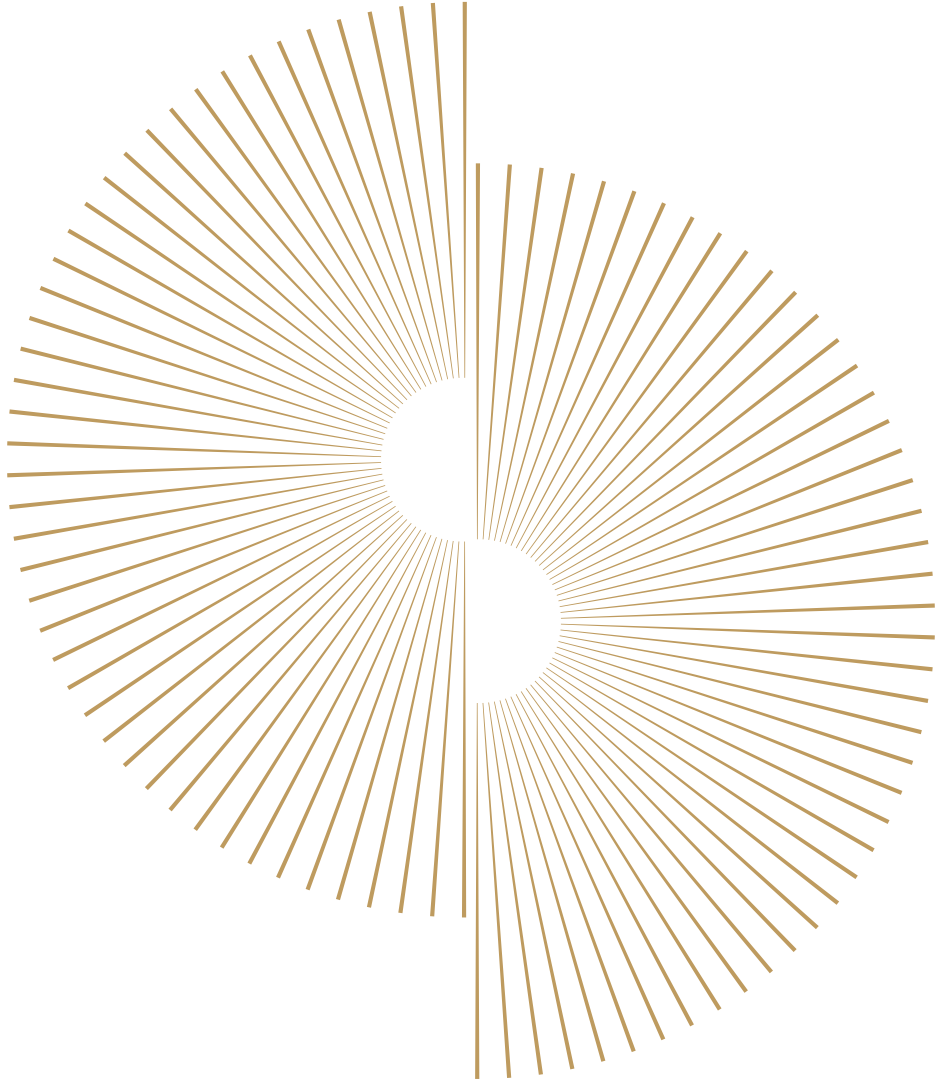


PRESENTED BY
KOLTER DouglasElliman

ORAL REPRESENTATIONS CANNOT BE RELIED UPON AS CORRECTLY STATING REPRESENTATIONS OF THE SELLER. FOR CORRECT REPRESENTATIONS, MAKE REFERENCE TO THIS BROCHURE AND TO THE DOCUMENTS REQUIRED BY SECTION 718.503, FLORIDA STATUTES. TO BE FURNISHED BY A SELLER TO A BUYER OR LESSEE. Prices, terms and availability are subject to change at any time without notice. All dimensions are approximate. The floorplan is subject to change without notice. The seller reserves the absolute right, in its sole judgement and discretion, to substitute appliances, materials, fixtures and equipment of equal or greater value for those specified. There are various methods of calculating the total square footage of a condominium unit, and depending on the method of calculation, the quoted square footage of a condominium unit may vary more than a normal amount. The total condominium square footages as shown in this brochure are based on the "Architectural Method" of measurement which measures the exterior perimeter of the condominium unit, and also includes interior columns and fifty percent of demising walls. The method for calculating residential square footage used in marketing materials is different than the method used for calculating residential square footage in the condominium documents. Please see the Declaration of Condominium for more information. The model shown includes options and upgrades that are not a part of a base residence pricing. © The Kolter Group. March, 2021.



Preview Gallery located in the Douglas Elliman office in the Ritz-Carlton
1 N. Fort Lauderdale Beach Blvd., Fort Lauderdale, FL 33304



Selene

OCEANFRONT RESIDENCES

FORT LAUDERDALE

South Tower — Deep Sky Residence

SOUTH TOWER

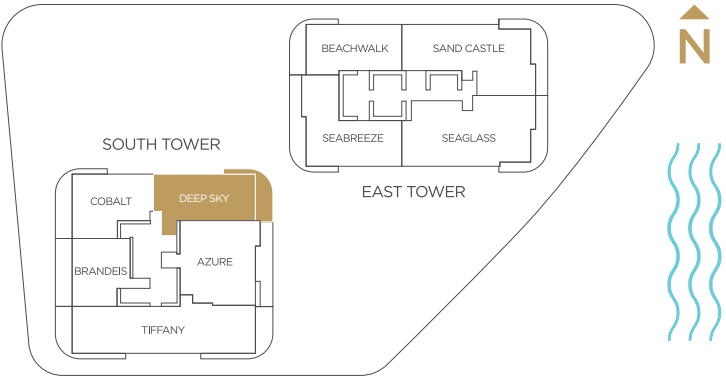
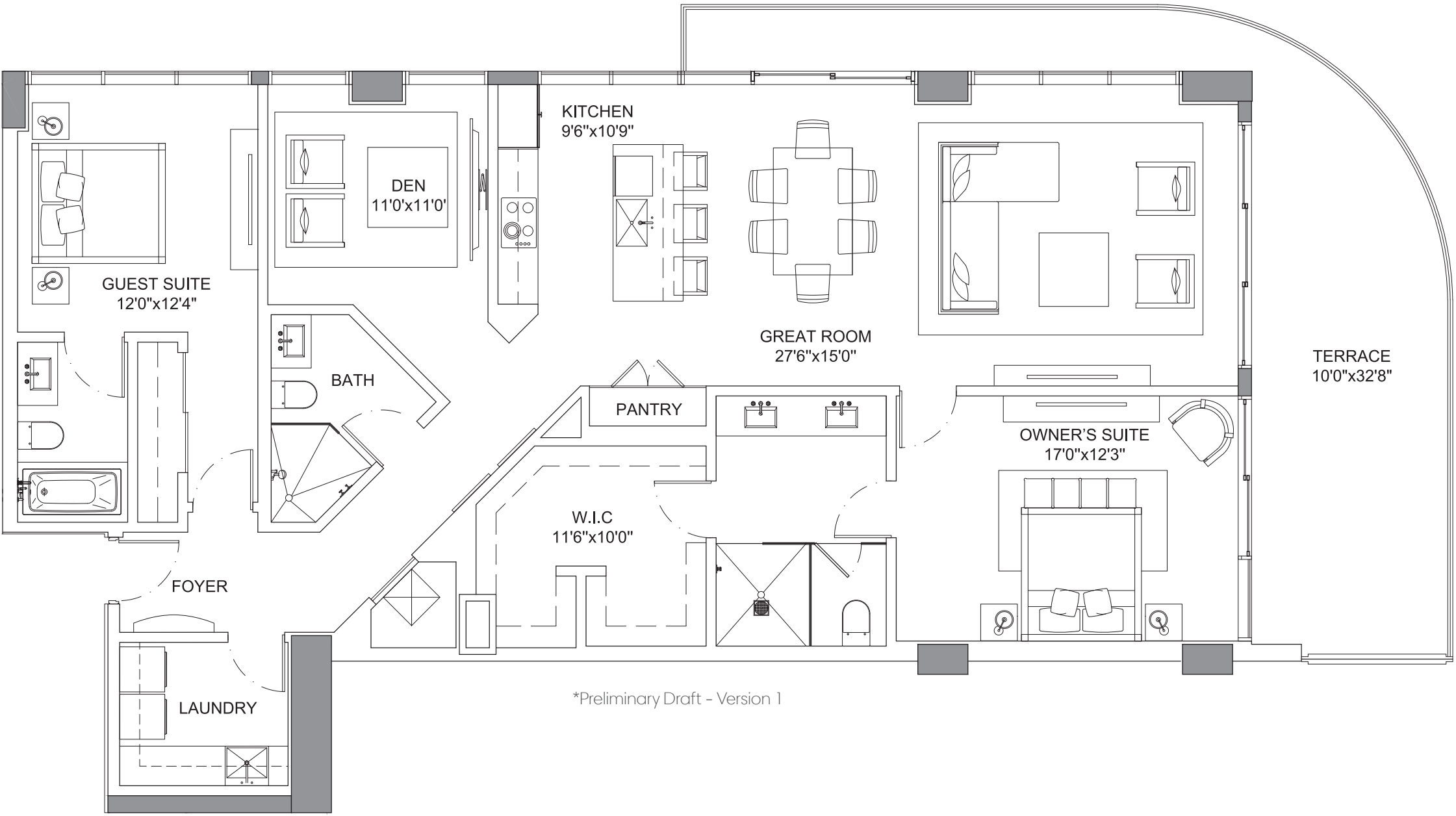
DEEP SKY

RESIDENCE

Specifications

2 Bedrooms | 3 Bathrooms | Den

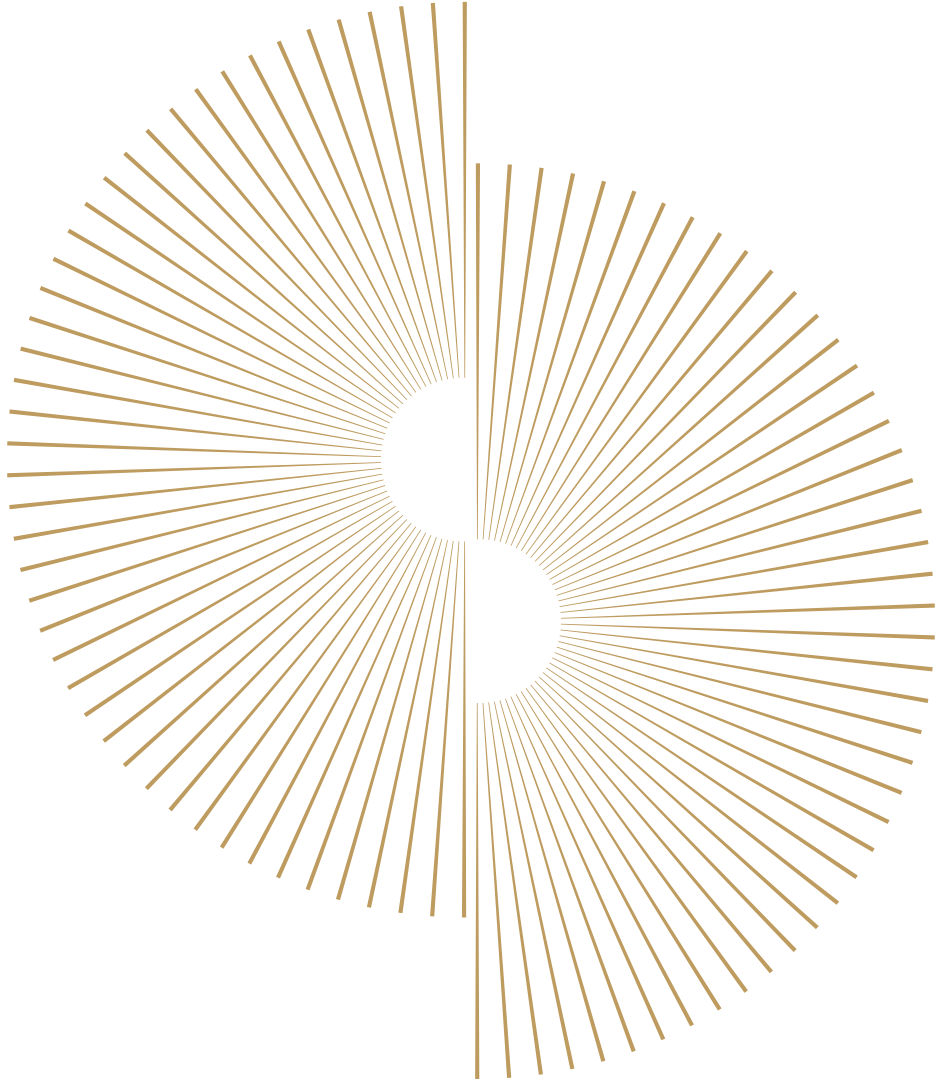
Interior	1,858 SQFT
Exterior	374 SQFT
Total Area	2,232 SQFT



ORAL REPRESENTATIONS CANNOT BE RELIED UPON AS CORRECTLY STATING REPRESENTATIONS OF THE SELLER. FOR CORRECT REPRESENTATIONS, MAKE REFERENCE TO THIS BROCHURE AND TO THE DOCUMENTS REQUIRED BY SECTION 718.503, FLORIDA STATUTES. TO BE FURNISHED BY A SELLER TO A BUYER OR LESSEE. Prices, terms and availability are subject to change at any time without notice. All dimensions are approximate. The floorplan is subject to change without notice. The seller reserves the absolute right, in its sole judgement and discretion, to substitute appliances, materials, fixtures and equipment of equal or greater value for those specified. There are various methods of calculating the total square footage of a condominium unit, and depending on the method of calculation, the quoted square footage of a condominium unit may vary more than a normal amount. The total condominium square footages as shown in this brochure are based on the "Architectural Method" of measurement which measures the exterior perimeter of the condominium unit, and also includes interior columns and fifty percent of demising walls. The method for calculating residential square footage used in marketing materials is different than the method used for calculating residential square footage in the condominium documents. Please see the Declaration of Condominium for more information. The model shown includes options and upgrades that are not a part of a base residence pricing. © The Kolter Group. March, 2021.



Preview Gallery located in the Douglas Elliman office in the Ritz-Carlton
1 N. Fort Lauderdale Beach Blvd., Fort Lauderdale, FL 33304



Selene

OCEANFRONT RESIDENCES

FORT LAUDERDALE

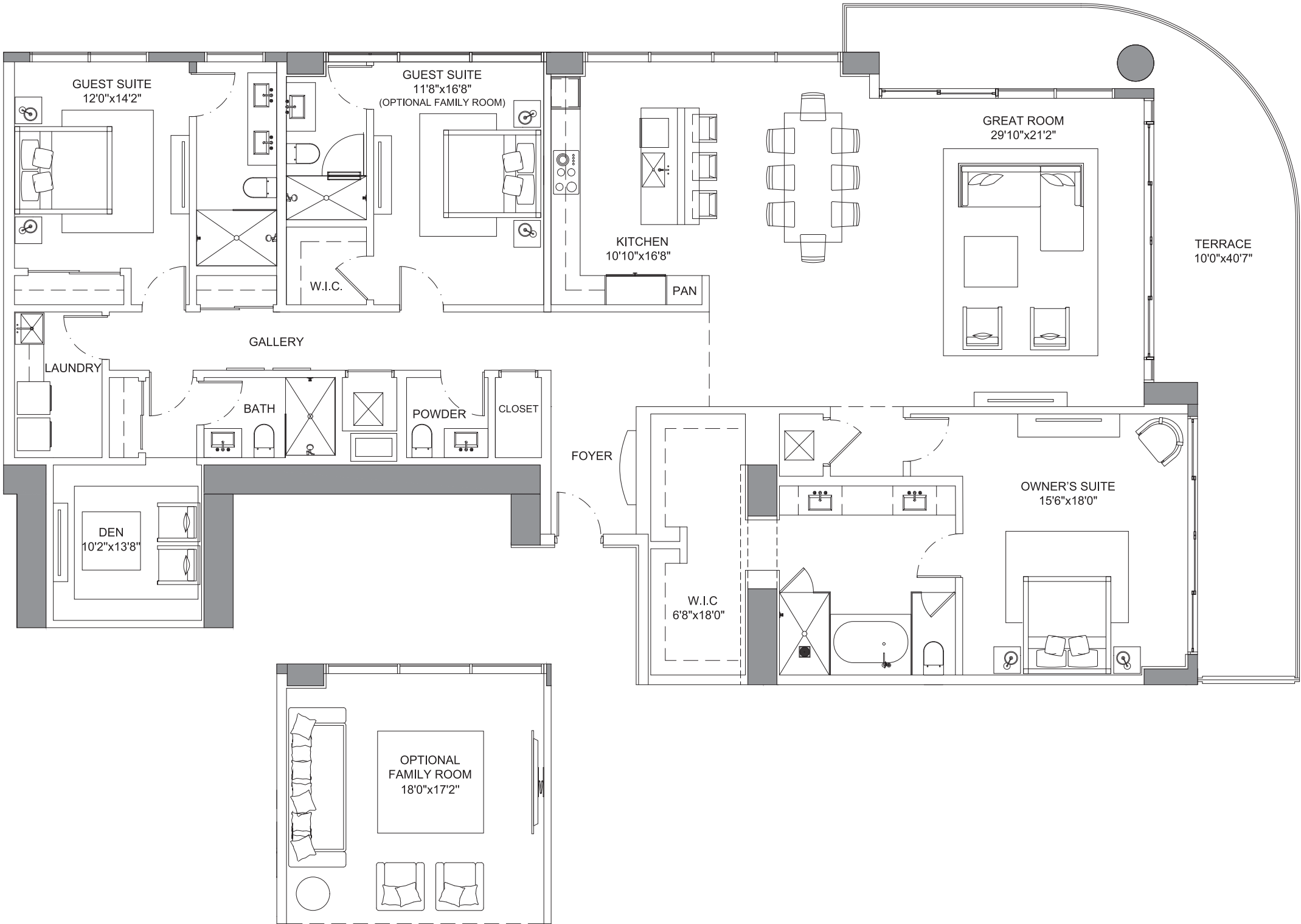
East Tower — Sand Castle Residence

EAST TOWER SAND CASTLE RESIDENCE

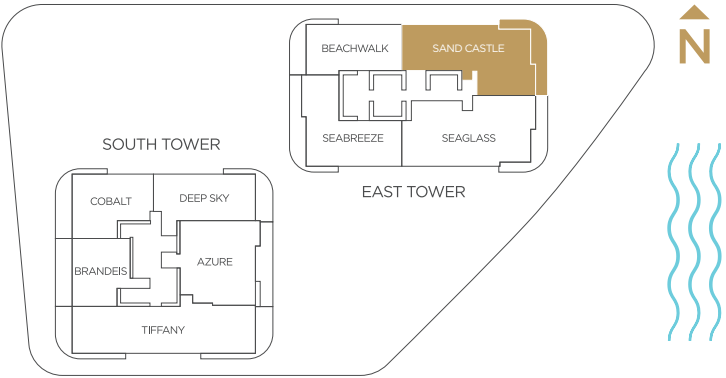
Selene
OCEANFRONT RESIDENCES
FORT LAUDERDALE

Specifications

3 Bedrooms 4.5 Bathrooms Den	
Interior	2,981 SQFT
Exterior	473 SQFT
Total Area	3,454 SQFT



*Preliminary Draft - Version 1

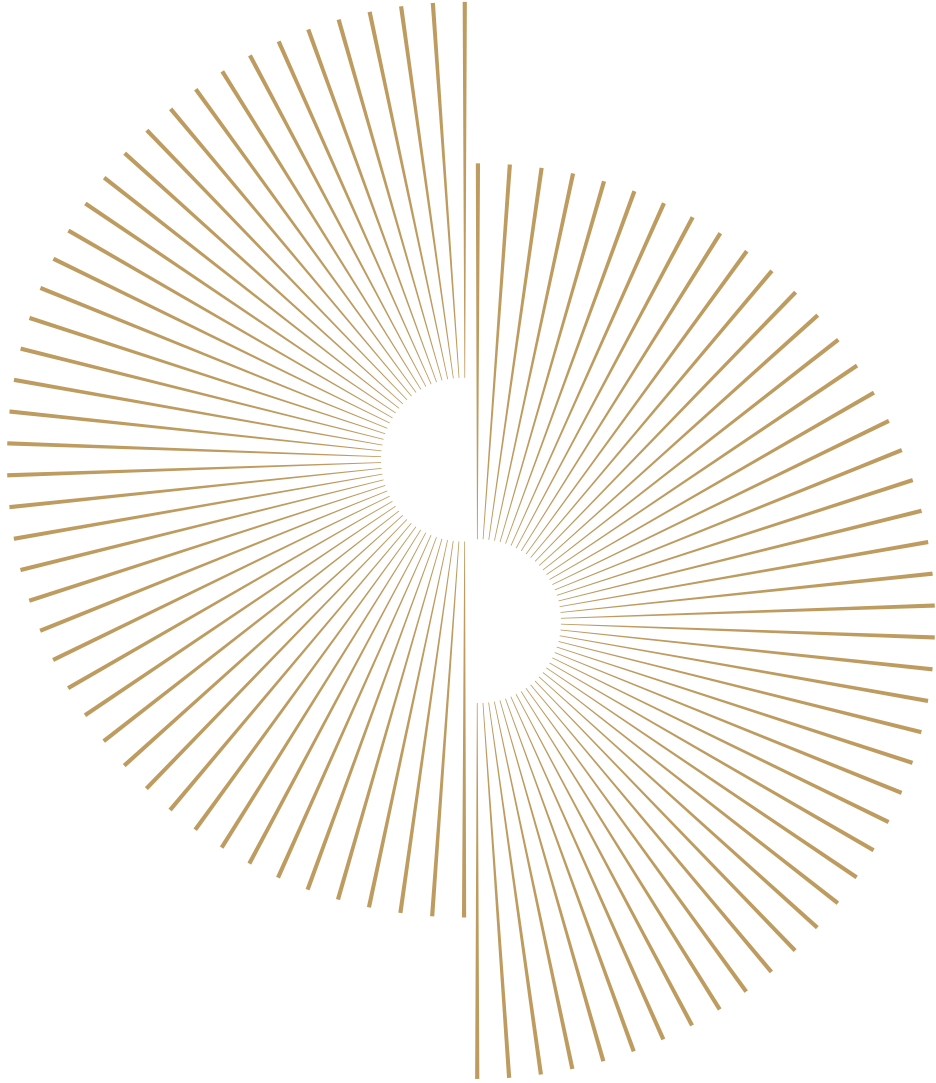


PRESENTED BY
KOLTER

ORAL REPRESENTATIONS CANNOT BE RELIED UPON AS CORRECTLY STATING REPRESENTATIONS OF THE SELLER. FOR CORRECT REPRESENTATIONS, MAKE REFERENCE TO THIS BROCHURE AND TO THE DOCUMENTS REQUIRED BY SECTION 718.503, FLORIDA STATUTES. TO BE FURNISHED BY A SELLER TO A BUYER OR LESSEE. Prices, terms and availability are subject to change at any time without notice. All dimensions are approximate. The floorplan is subject to change without notice. The seller reserves the absolute right, in its sole judgement and discretion, to substitute appliances, materials, fixtures and equipment of equal or greater value for those specified. There are various methods of calculating the total square footage of a condominium unit, and depending on the method of calculation, the quoted square footage of a condominium unit may vary more than a normal amount. The total condominium square footages as shown in this brochure are based on the "Architectural Method" of measurement which measures the exterior perimeter of the condominium unit, and also includes interior columns and fifty percent of demising walls. The method for calculating residential square footage used in marketing materials is different than the method used for calculating residential square footage in the condominium documents. Please see the Declaration of Condominium for more information. The model shown includes options and upgrades that are not a part of a base residence pricing. © The Kolter Group. March, 2021.



Preview Gallery located in the Douglas Elliman office in the Ritz-Carlton
1 N. Fort Lauderdale Beach Blvd., Fort Lauderdale, FL 33304



Selene

OCEANFRONT RESIDENCES

FORT LAUDERDALE

East Tower — Seabreeze Residence

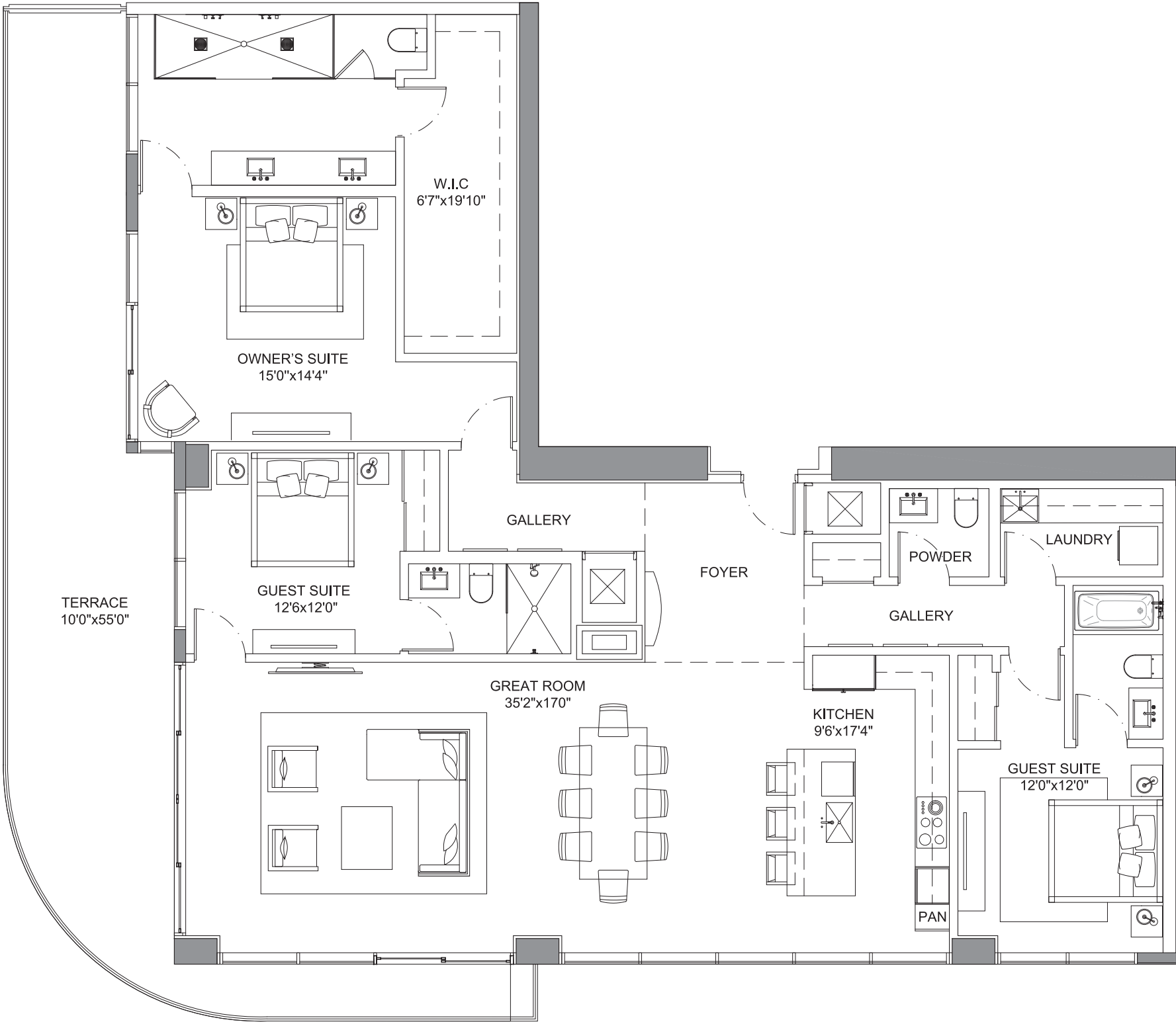
EAST TOWER SEABREEZE RESIDENCE

Selene
OCEANFRONT RESIDENCES
FORT LAUDERDALE

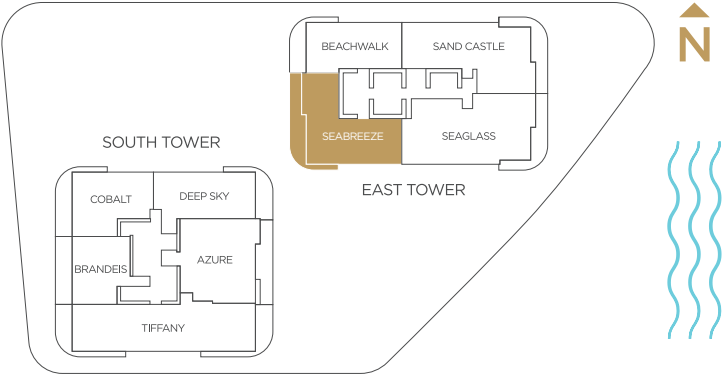
Specifications

3 Bedrooms | 3.5 Bathrooms

Interior	2,285 SQFT
Exterior	543 SQFT
Total Area	2,828 SQFT



*Preliminary Draft - Version 1

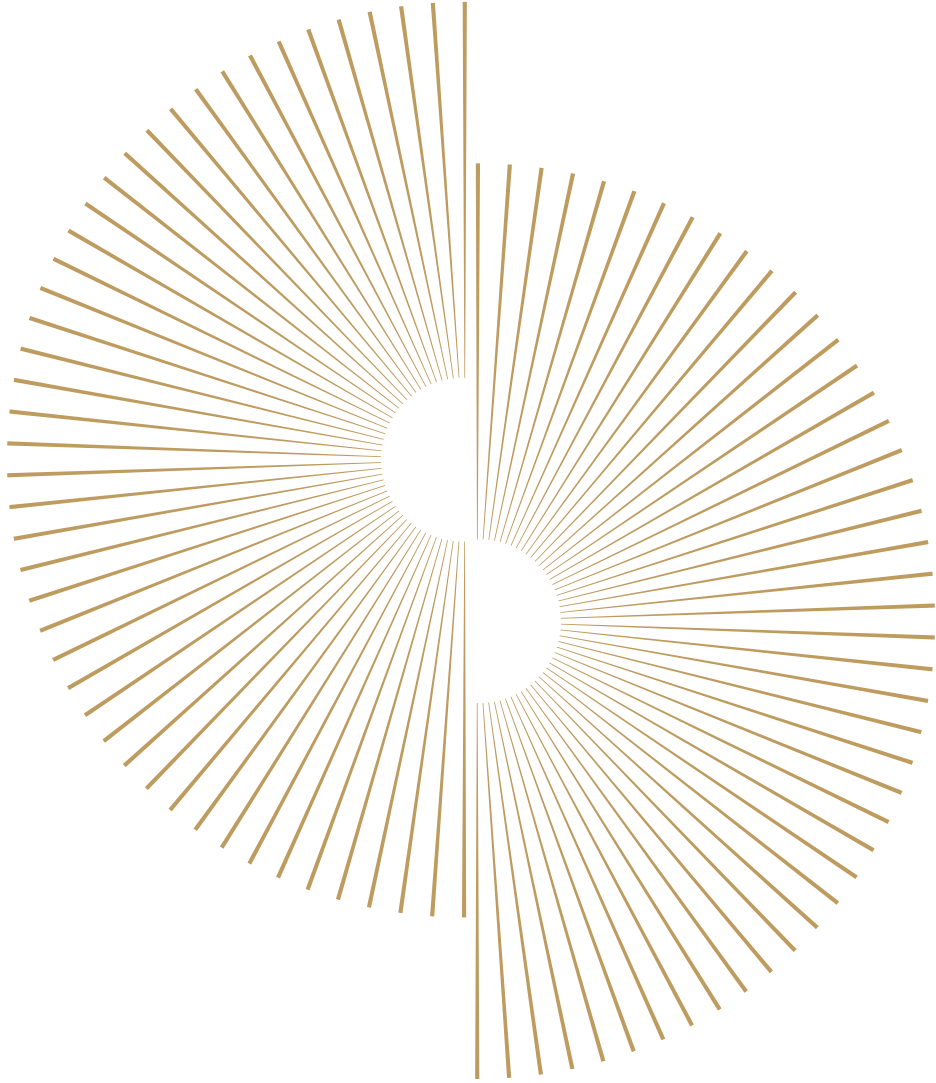


ORAL REPRESENTATIONS CANNOT BE RELIED UPON AS CORRECTLY STATING REPRESENTATIONS OF THE SELLER. FOR CORRECT REPRESENTATIONS, MAKE REFERENCE TO THIS BROCHURE AND TO THE DOCUMENTS REQUIRED BY SECTION 718.503, FLORIDA STATUTES. TO BE FURNISHED BY A SELLER TO A BUYER OR LESSEE. Prices, terms and availability are subject to change at any time without notice. All dimensions are approximate. The floorplan is subject to change without notice. The seller reserves the absolute right, in its sole judgement and discretion, to substitute appliances, materials, fixtures and equipment of equal or greater value for those specified. There are various methods of calculating the total square footage of a condominium unit, and depending on the method of calculation, the quoted square footage of a condominium unit may vary more than a normal amount. The total condominium square footages as shown in this brochure are based on the "Architectural Method" of measurement which measures the exterior perimeter of the condominium unit, and also includes interior columns and fifty percent of demising walls. The method for calculating residential square footage used in marketing materials is different than the method used for calculating residential square footage in the condominium documents. Please see the Declaration of Condominium for more information. The model shown includes options and upgrades that are not a part of a base residence pricing. © The Kolter Group. March, 2021.

PRESENTED BY
KOLTER



Preview Gallery located in the Douglas Elliman office in the Ritz-Carlton
1 N. Fort Lauderdale Beach Blvd., Fort Lauderdale, FL 33304



Selene

OCEANFRONT RESIDENCES

FORT LAUDERDALE

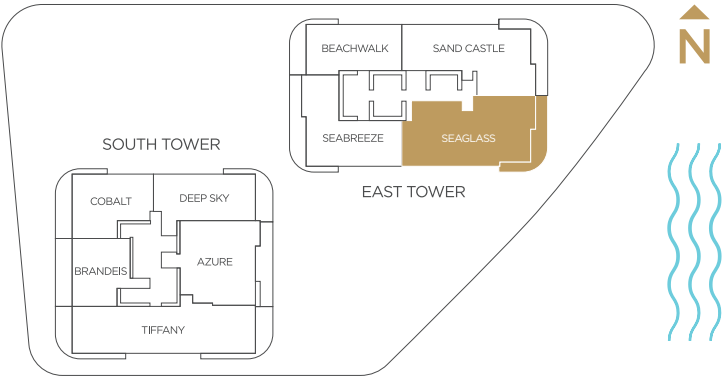
East Tower — Seaglass Residence

EAST TOWER SEAGLASS RESIDENCE

Selene
OCEANFRONT RESIDENCES
FORT LAUDERDALE

Specifications

3 Bedrooms 4 Bathrooms Family Room	
Interior	3,127 SQFT
Exterior	473 SQFT
Total Area	3,600 SQFT

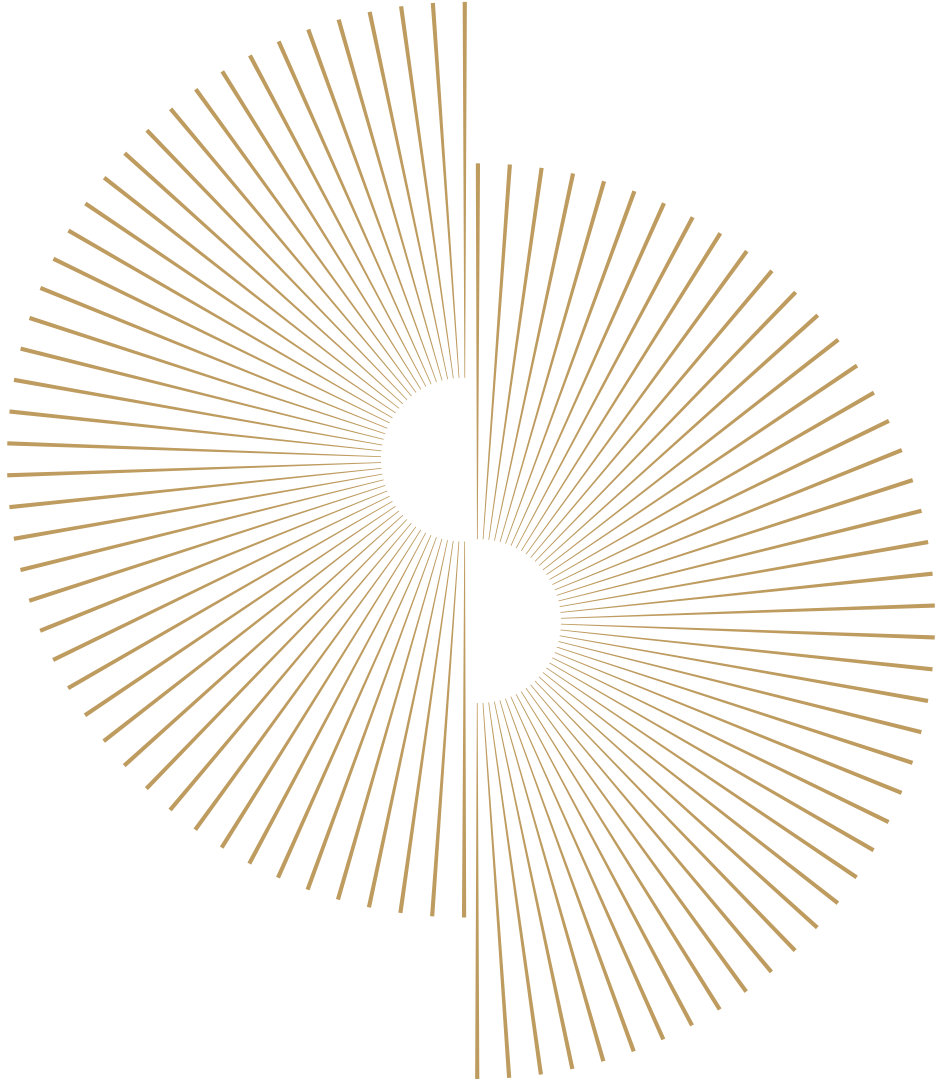


PRESENTED BY
KOLTER

ORAL REPRESENTATIONS CANNOT BE RELIED UPON AS CORRECTLY STATING REPRESENTATIONS OF THE SELLER. FOR CORRECT REPRESENTATIONS, MAKE REFERENCE TO THIS BROCHURE AND TO THE DOCUMENTS REQUIRED BY SECTION 718.503, FLORIDA STATUTES. TO BE FURNISHED BY A SELLER TO A BUYER OR LESSEE. Prices, terms and availability are subject to change at any time without notice. All dimensions are approximate. The floorplan is subject to change without notice. The seller reserves the absolute right, in its sole judgement and discretion, to substitute appliances, materials, fixtures and equipment of equal or greater value for those specified. There are various methods of calculating the total square footage of a condominium unit, and depending on the method of calculation, the quoted square footage of a condominium unit may vary more than a normal amount. The total condominium square footages as shown in this brochure are based on the "Architectural Method" of measurement which measures the exterior perimeter of the condominium unit, and also includes interior columns and fifty percent of demising walls. The method for calculating residential square footage used in marketing materials is different than the method used for calculating residential square footage in the condominium documents. Please see the Declaration of Condominium for more information. The model shown includes options and upgrades that are not a part of a base residence pricing. © The Kolter Group. March, 2021.



Preview Gallery located in the Douglas Elliman office in the Ritz-Carlton
1 N. Fort Lauderdale Beach Blvd., Fort Lauderdale, FL 33304



Selene

OCEANFRONT RESIDENCES

FORT LAUDERDALE

South Tower — Tiffany Residence

SOUTH TOWER

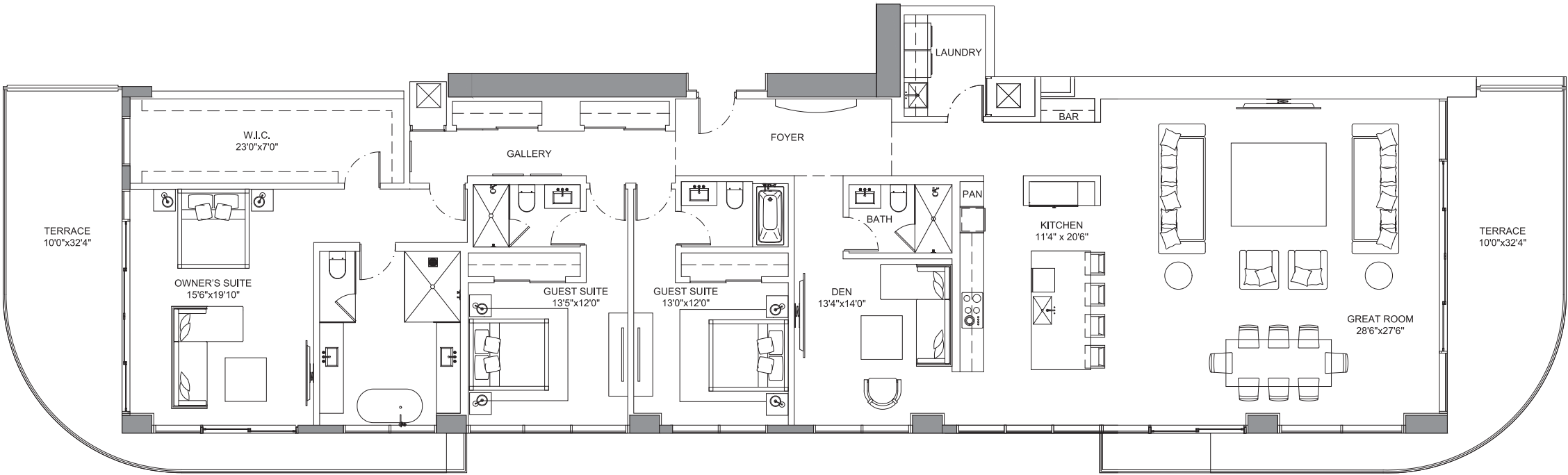
TIFFANY

RESIDENCE

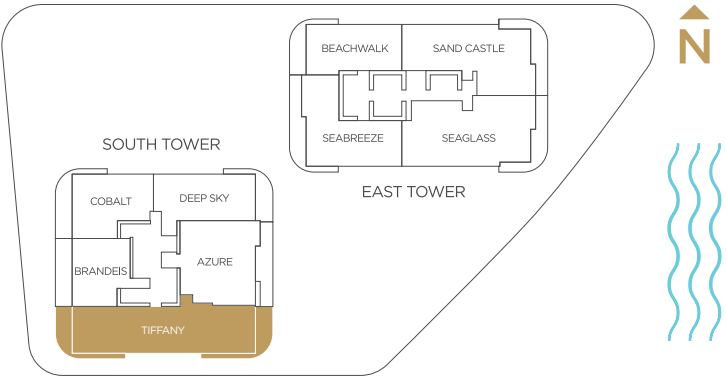
Specifications

3 Bedrooms | 4 Bathrooms | Den

Interior	3,264 SQFT
Exterior	746 SQFT
Total Area	4,010 SQFT



*Preliminary Draft - Version 1



PRESENTED BY

KOLTER DouglasElliman

ORAL REPRESENTATIONS CANNOT BE RELIED UPON AS CORRECTLY STATING REPRESENTATIONS OF THE SELLER. FOR CORRECT REPRESENTATIONS, MAKE REFERENCE TO THIS BROCHURE AND TO THE DOCUMENTS REQUIRED BY SECTION 718.503, FLORIDA STATUTES. TO BE FURNISHED BY A SELLER TO A BUYER OR LESSEE. Prices, terms and availability are subject to change at any time without notice. All dimensions are approximate. The floorplan is subject to change without notice. The seller reserves the absolute right, in its sole judgement and discretion, to substitute appliances, materials, fixtures and equipment of equal or greater value for those specified. There are various methods of calculating the total square footage of a condominium unit, and depending on the method of calculation, the quoted square footage of a condominium unit may vary more than a normal amount. The total condominium square footages as shown in this brochure are based on the "Architectural Method" of measurement which measures the exterior perimeter of the condominium unit, and also includes interior columns and fifty percent of demising walls. The method for calculating residential square footage used in marketing materials is different than the method used for calculating residential square footage in the condominium documents. Please see the Declaration of Condominium for more information. The model shown includes options and upgrades that are not a part of a base residence pricing. © The Kolter Group. March, 2021.



Preview Gallery located in the Douglas Elliman office in the Ritz-Carlton
1 N. Fort Lauderdale Beach Blvd., Fort Lauderdale, FL 33304