

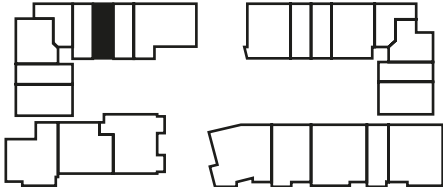
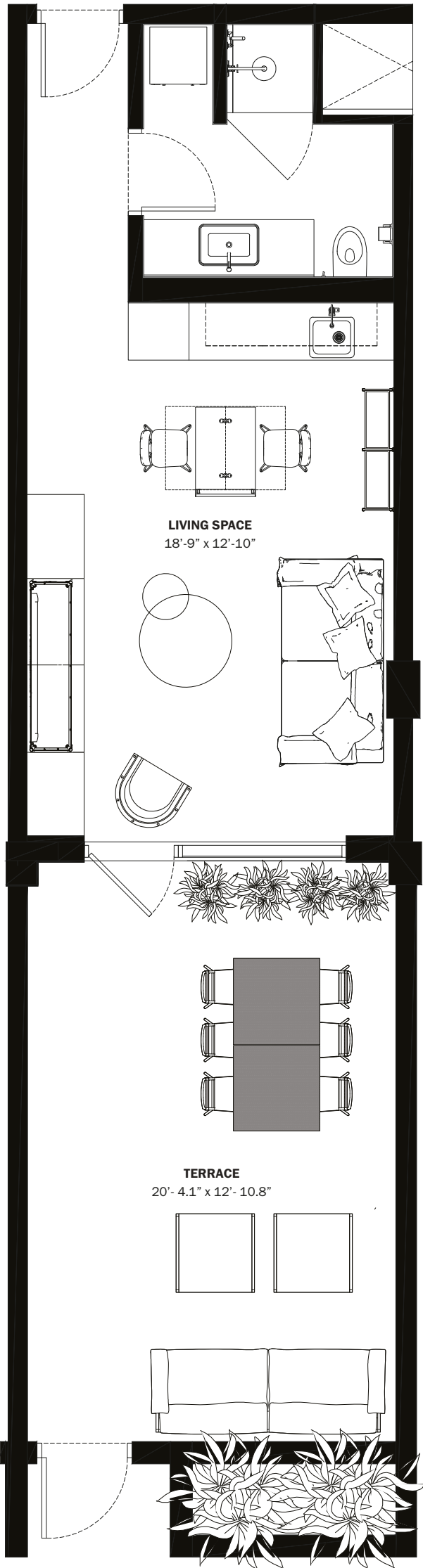
A1

INTERIORS AREA:405 SQ FT37.7 M²

TERRACE AREA:316 SQ FT29.4 M²

TOTAL RESIDENCE:721 SQ FT67.1 M²

ID: 209 - 2ND FLOOR



28th STREET




BELINVEST
CREATING VALUE

ONE | Sotheby's
INTERNATIONAL REALTY

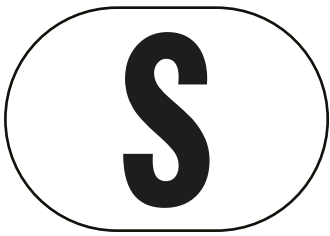
DIESEL HEADQUARTERS
VIA DELL'INDUSTRIA 4/6, BREGANZE (VI)
45°41'30.7" N 11°33'41.8" E

DIESEL WYNWOOD CONDOMINIUM
148 NW 28TH ST. MIAMI, FL 33127
25°48'10.0" N 80°11'53.1" W

RR:55
© COPYRIGHT DIESEL - IND 1978

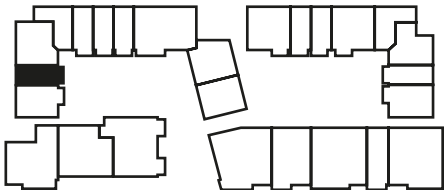
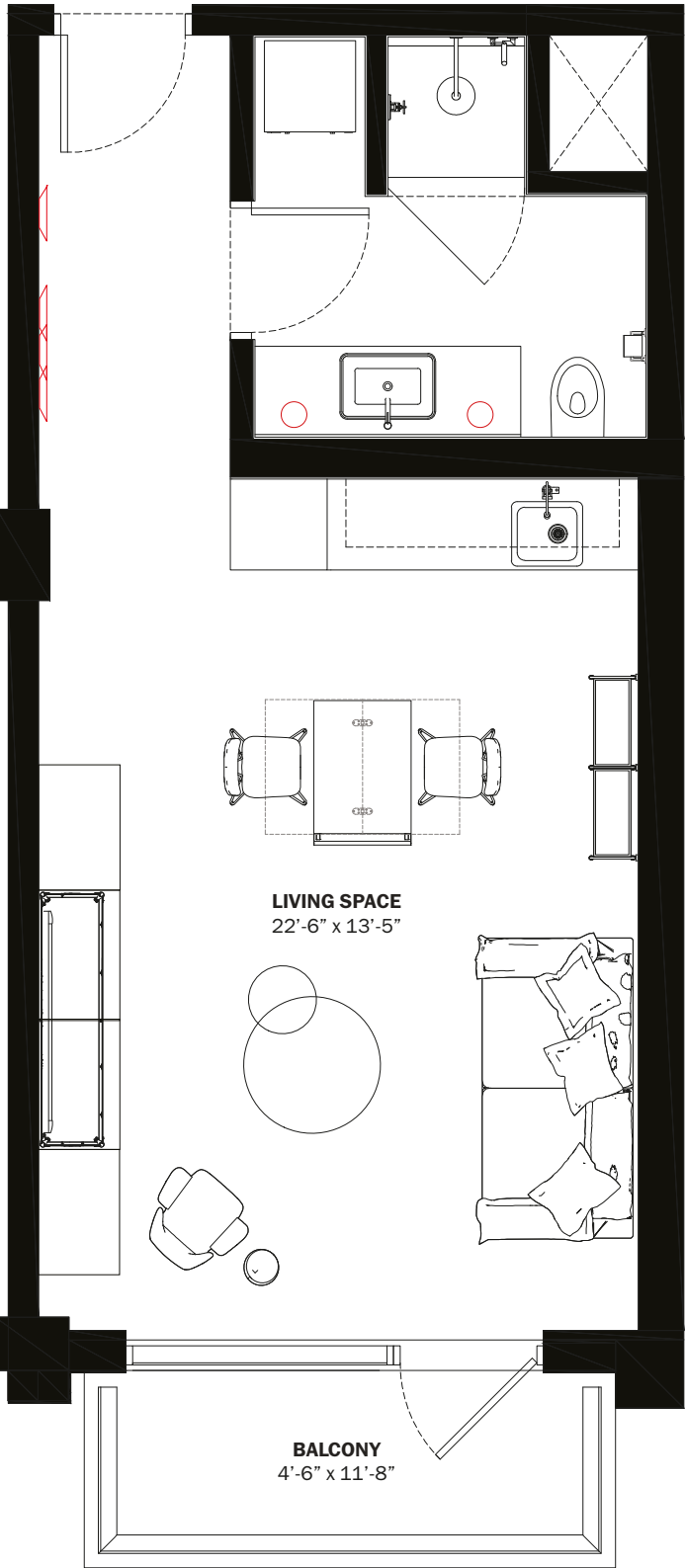
 ORAL REPRESENTATIONS CANNOT BE RELIED UPON AS CORRECTLY STATING THE REPRESENTATIONS OF THE DEVELOPER. FOR CORRECT REPRESENTATIONS, MAKE REFERENCE TO THIS BROCHURE AND TO THE DOCUMENTS REQUIRED BY SECTION 718.503, FLORIDA STATUTES, TO BE FURNISHED BY A DEVELOPER TO A BUYER OR LESSEE.

These materials are not intended to be an offer to sell, or solicitation to buy a unit in the condominium. Such an offering shall only be made pursuant to the prospectus (offering circular) for the condominium and no statements should be relied upon unless made in the prospectus or in the applicable purchase agreement. In no event shall any solicitation, offer or sale of a unit in the condominium be made in, or to residents of, any state or country in which such activity would be unlawful. This is not an offer to sell nor a solicitation to purchase a condominium unit directed to any person where such an offer or solicitation is prohibited by law unless the condominium is registered if required or exempt. All prices, plans, specifications, features, amenities and other descriptions are preliminary and are subject to change without notice, as provided in your purchase agreement. Stated square footages and dimensions are measured to the exterior boundaries of the exterior walls and the centerline of interior demising walls and in fact vary from the square footage and dimensions that would be determined by using the description and definition of the "Unit" set forth in the Declaration (which generally only includes the interior airspace between the perimeter walls and excludes all interior structural components and other common elements). This method is generally used in sales materials and is provided to allow a prospective buyer to compare the Units with units in other condominium projects that utilize the same method. Measurements of rooms set forth on this floor plan are generally taken at the farthest points of each given room (as if the room were a perfect rectangle), without regard for any cutouts or variations. Accordingly, the area of the actual room will typically be smaller than the product obtained by multiplying the stated length and width. All dimensions are estimates which will vary with actual construction, and all floor plans, specifications and other development plans are subject to change and will not necessarily accurately reflect the final plans and specifications for the development. All depictions of appliances, counters, soffits, floor coverings and other matters of detail, including, with out limitation, items of finish and decoration, are conceptual only and are not necessarily included in each Unit.



A2

INTERIORS AREA:	425 SQ FT	39.5 M ²
TERRACE AREA:	62 SQ FT	5.8 M ²
TOTAL RESIDENCE:	487 SQ FT	45.3 M ²
ID 305 - 3 RD LEVEL		



28th STREET




BELINVEST
CREATING VALUE

ONE | **Sotheby's**
INTERNATIONAL REALTY

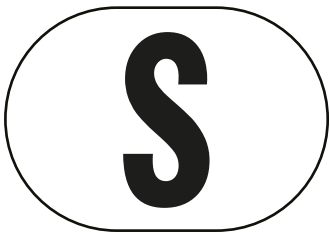
DIESEL HEADQUARTERS
VIA DELL'INDUSTRIA 4/6, BREGANZE (VI)
45°41'30.7" N 11°33'41.8" E

DIESEL WYNWOOD CONDOMINIUM
148 NW 28TH ST. MIAMI, FL 33127
25°48'10.0" N 80°11'53.1" W

RR:55
© COPYRIGHT DIESEL - IND 1978

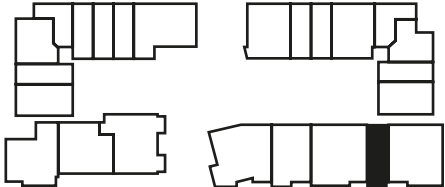
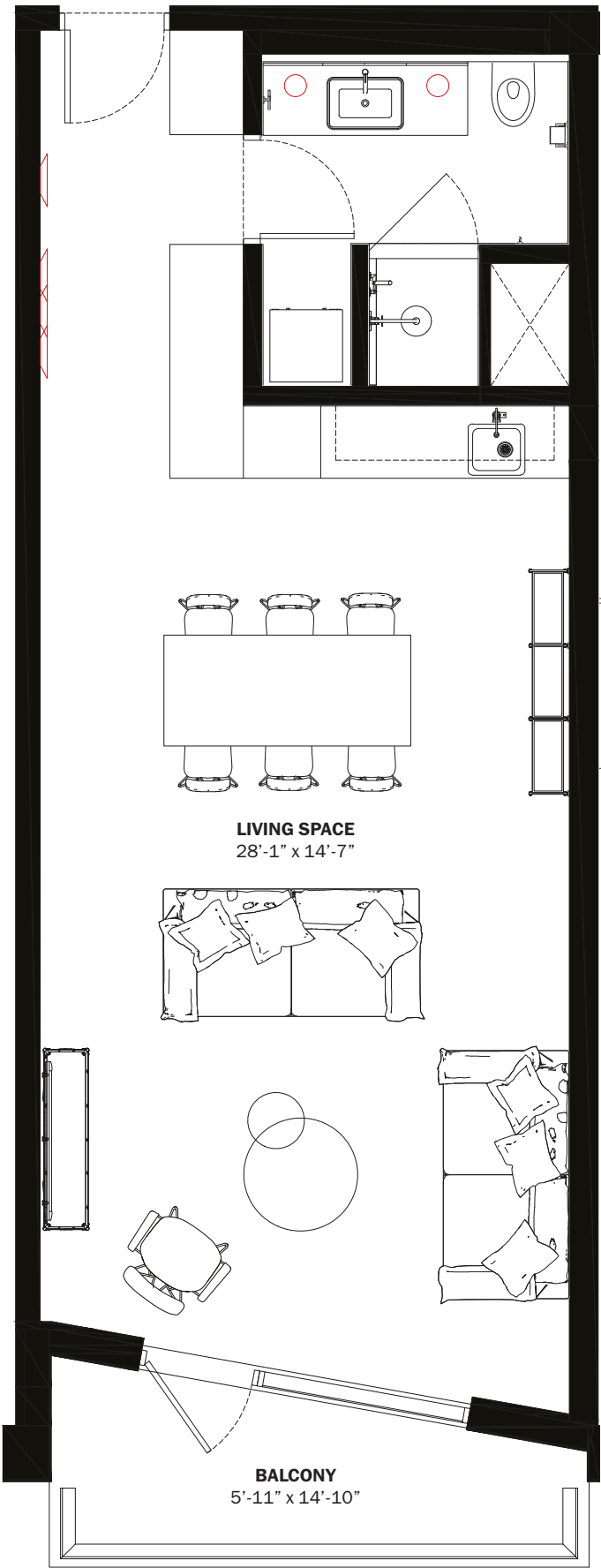
 ORAL REPRESENTATIONS CANNOT BE RELIED UPON AS CORRECTLY STATING THE REPRESENTATIONS OF THE DEVELOPER. FOR CORRECT REPRESENTATIONS, MAKE REFERENCE TO THIS BROCHURE AND TO THE DOCUMENTS REQUIRED BY SECTION 718.503, FLORIDA STATUTES, TO BE FURNISHED BY A DEVELOPER TO A BUYER OR LESSEE.

These materials are not intended to be an offer to sell, or solicitation to buy a unit in the condominium. Such an offering shall only be made pursuant to the prospectus (offering circular) for the condominium and no statements should be relied upon unless made in the prospectus or in the applicable purchase agreement. In no event shall any solicitation, offer or sale of a unit in the condominium be made in, or to residents of, any state or country in which such activity would be unlawful. This is not an offer to sell nor a solicitation to purchase a condominium unit directed to any person where such an offer or solicitation is prohibited by law unless the condominium is registered if required or exempt. All prices, plans, specifications, features, amenities and other descriptions are preliminary and are subject to change without notice, as provided in your purchase agreement. Stated square footages and dimensions are measured to the exterior boundaries of the exterior walls and the centerline of interior demising walls and in fact vary from the square footage and dimensions that would be determined by using the description and definition of the "Unit" set forth in the Declaration (which generally only includes the interior airspace between the perimeter walls and excludes all interior structural components and other common elements). This method is generally used in sales materials and is provided to allow a prospective buyer to compare the Units with units in other condominium projects that utilize the same method. Measurements of rooms set forth on this floor plan are generally taken at the farthest points of each given room (as if the room were a perfect rectangle), without regard for any cutouts or variations. Accordingly, the area of the actual room will typically be smaller than the product obtained by multiplying the stated length and width. All dimensions are estimates which will vary with actual construction, and all floor plans, specifications and other development plans are subject to change and will not necessarily accurately reflect the final plans and specifications for the development. All depictions of appliances, counters, soffits, floor coverings and other matters of detail, including, with out limitation, items of finish and decoration, are conceptual only and are not necessarily included in each Unit.



A3

INTERIORS AREA:	587 SQ FT	54.6 M ²
TERRACE AREA:	84 SQ FT	7.9 M ²
TOTAL RESIDENCE:	671 SQ FT	62.4 M ²
ID 221 - 2 ND LEVEL		




28th STREET



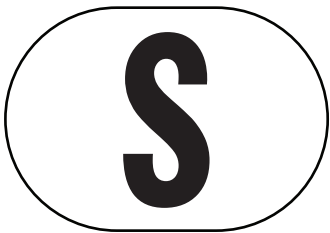
BELINVEST
CREATING VALUE

ONE | Sotheby's
INTERNATIONAL REALTY

DIESEL HEADQUARTERS
VIA DELL'INDUSTRIA 4/6, BREGANZE (VI)
45°41'30.7" N 11°33'41.8" E
DIESEL WYNWOOD CONDOMINIUM
148 NW 28TH ST. MIAMI, FL 33127
25°48'10.0" N 80°11'53.1" W
RR:55
© COPYRIGHT DIESEL - IND 1978

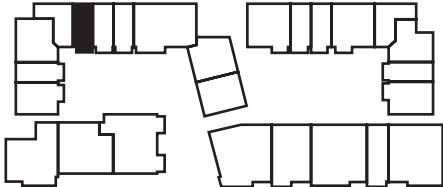
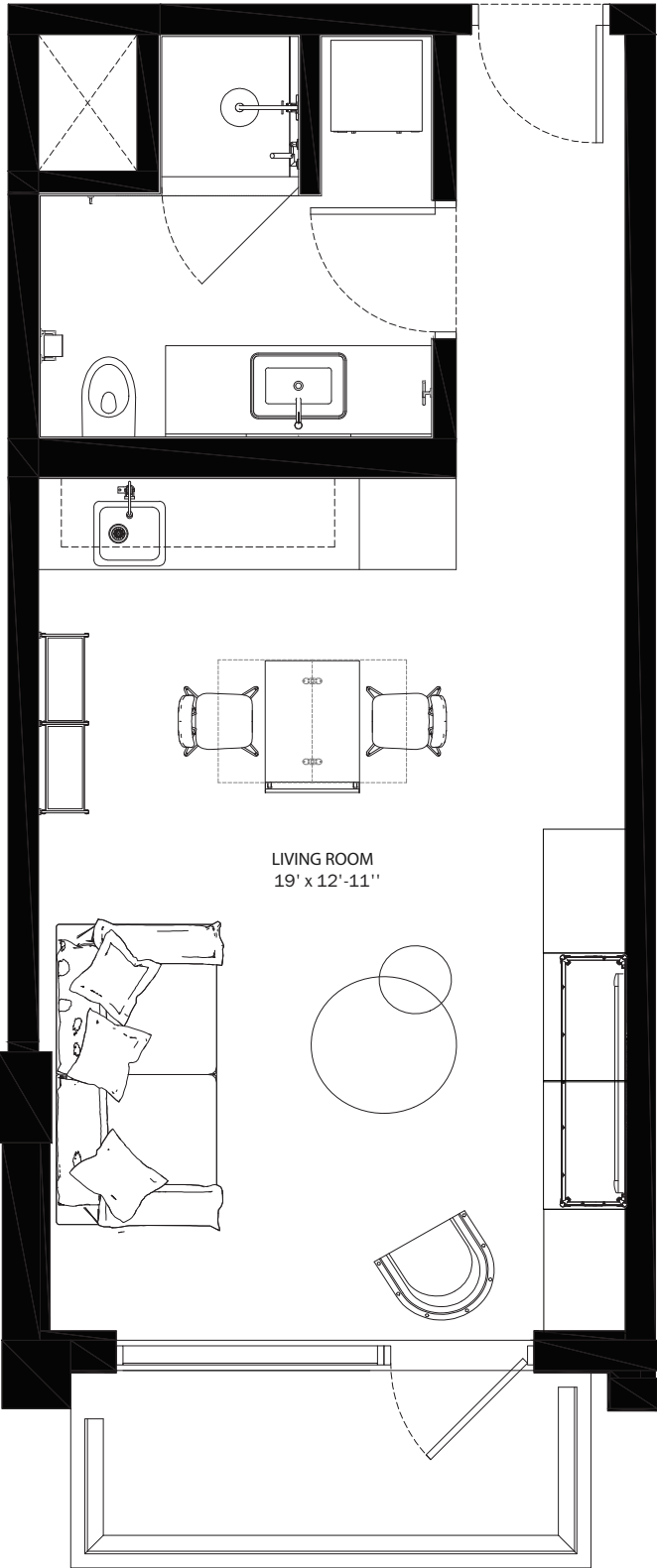
 ORAL REPRESENTATIONS CANNOT BE RELIED UPON AS CORRECTLY STATING THE REPRESENTATIONS OF THE DEVELOPER. FOR CORRECT REPRESENTATIONS, MAKE REFERENCE TO THIS BROCHURE AND TO THE DOCUMENTS REQUIRED BY SECTION 718.503, FLORIDA STATUTES, TO BE FURNISHED BY A DEVELOPER TO A BUYER OR LESSEE.

These materials are not intended to be an offer to sell, or solicitation to buy a unit in the condominium. Such an offering shall only be made pursuant to the prospectus (offering circular) for the condominium and no statements should be relied upon unless made in the prospectus or in the applicable purchase agreement. In no event shall any solicitation, offer or sale of a unit in the condominium be made in, or to residents of, any state or country in which such activity would be unlawful. This is not an offer to sell nor a solicitation to purchase a condominium unit directed to any person where such an offer or solicitation is prohibited by law unless the condominium is registered if required or exempt. All prices, plans, specifications, features, amenities and other descriptions are preliminary and are subject to change without notice, as provided in your purchase agreement. Stated square footages and dimensions are measured to the exterior boundaries of the exterior walls and the centerline of interior demising walls and in fact vary from the square footage and dimensions that would be determined by using the description and definition of the "Unit" set forth in the Declaration (which generally only includes the interior airspace between the perimeter walls and excludes all interior structural components and other common elements). This method is generally used in sales materials and is provided to allow a prospective buyer to compare the Units with units in other condominium projects that utilize the same method. Measurements of rooms set forth on this floor plan are generally taken at the farthest points of each given room (as if the room were a perfect rectangle), without regard for any cutouts or variations. Accordingly, the area of the actual room will typically be smaller than the product obtained by multiplying the stated length and width. All dimensions are estimates which will vary with actual construction, and all floor plans, specifications and other development plans are subject to change and will not necessarily accurately reflect the final plans and specifications for the development. All depictions of appliances, counters, soffits, floor coverings and other matters of detail, including, with out limitation, items of finish and decoration, are conceptual only and are not necessarily included in each Unit.



A4

INTERIORS AREA:	408 SQ FT	38 M ²
TERRACE AREA:	59 SQ FT	5.5 M ²
TOTAL RESIDENCE:	467 SQ FT	43.4 M ²
ID 508 - 5 TH LEVEL		



28th STREET




BELINVEST
CREATING VALUE

ONE | **Sotheby's**
INTERNATIONAL REALTY

DIESEL HEADQUARTERS
VIA DELL'INDUSTRIA 4/6, BREGANZE (VI)
45°41'30.7" N 11°33'41.8" E
DIESEL WYNWOOD CONDOMINIUM
148 NW 28TH ST. MIAMI, FL 33127
25°48'10.0" N 80°11'53.1" W

RR:55
© COPYRIGHT DIESEL - IND 1978

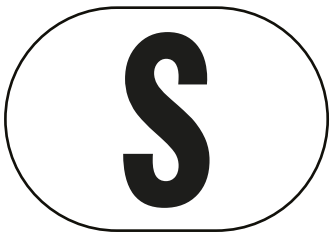
 ORAL REPRESENTATIONS CANNOT BE RELIED UPON AS CORRECTLY STATING THE REPRESENTATIONS OF THE DEVELOPER. FOR CORRECT REPRESENTATIONS, MAKE REFERENCE TO THIS BROCHURE AND TO THE DOCUMENTS REQUIRED BY SECTION 718.503, FLORIDA STATUTES, TO BE FURNISHED BY A DEVELOPER TO A BUYER OR LESSEE.

These materials are not intended to be an offer to sell, or solicitation to buy a unit in the condominium. Such an offering shall only be made pursuant to the prospectus (offering circular) for the condominium and no statements should be relied upon unless made in the prospectus or in the applicable purchase agreement. In no event shall any solicitation, offer or sale of a unit in the condominium be made in, or to residents of, any state or country in which such activity would be unlawful. This is not an offer to sell nor a solicitation to purchase a condominium unit directed to any person where such an offer or solicitation is prohibited by law unless the condominium is registered if required or exempt. All prices, plans, specifications, features, amenities and other descriptions are preliminary and are subject to change without notice, as provided in your purchase agreement. Stated square footages and dimensions are measured to the exterior boundaries of the exterior walls and the centerline of interior demising walls and in fact vary from the square footage and dimensions that would be determined by using the description and definition of the "Unit" set forth in the Declaration (which generally only includes the interior airspace between the perimeter walls and excludes all interior structural components and other common elements). This method is generally used in sales materials and is provided to allow a prospective buyer to compare the Units with units in other condominium projects that utilize the same method. Measurements of rooms set forth on this floor plan are generally taken at the farthest points of each given room (as if the room were a perfect rectangle), without regard for any cutouts or variations. Accordingly, the area of the actual room will typically be smaller than the product obtained by multiplying the stated length and width. All dimensions are estimates which will vary with actual construction, and all floor plans, specifications and other development plans are subject to change and will not necessarily accurately reflect the final plans and specifications for the development. All depictions of appliances, counters, soffits, floor coverings and other matters of detail, including, with out limitation, items of finish and decoration, are conceptual only and are not necessarily included in each Unit.

S

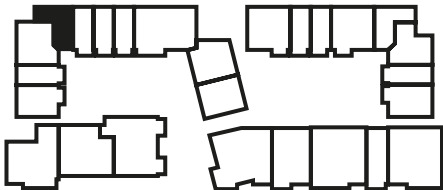
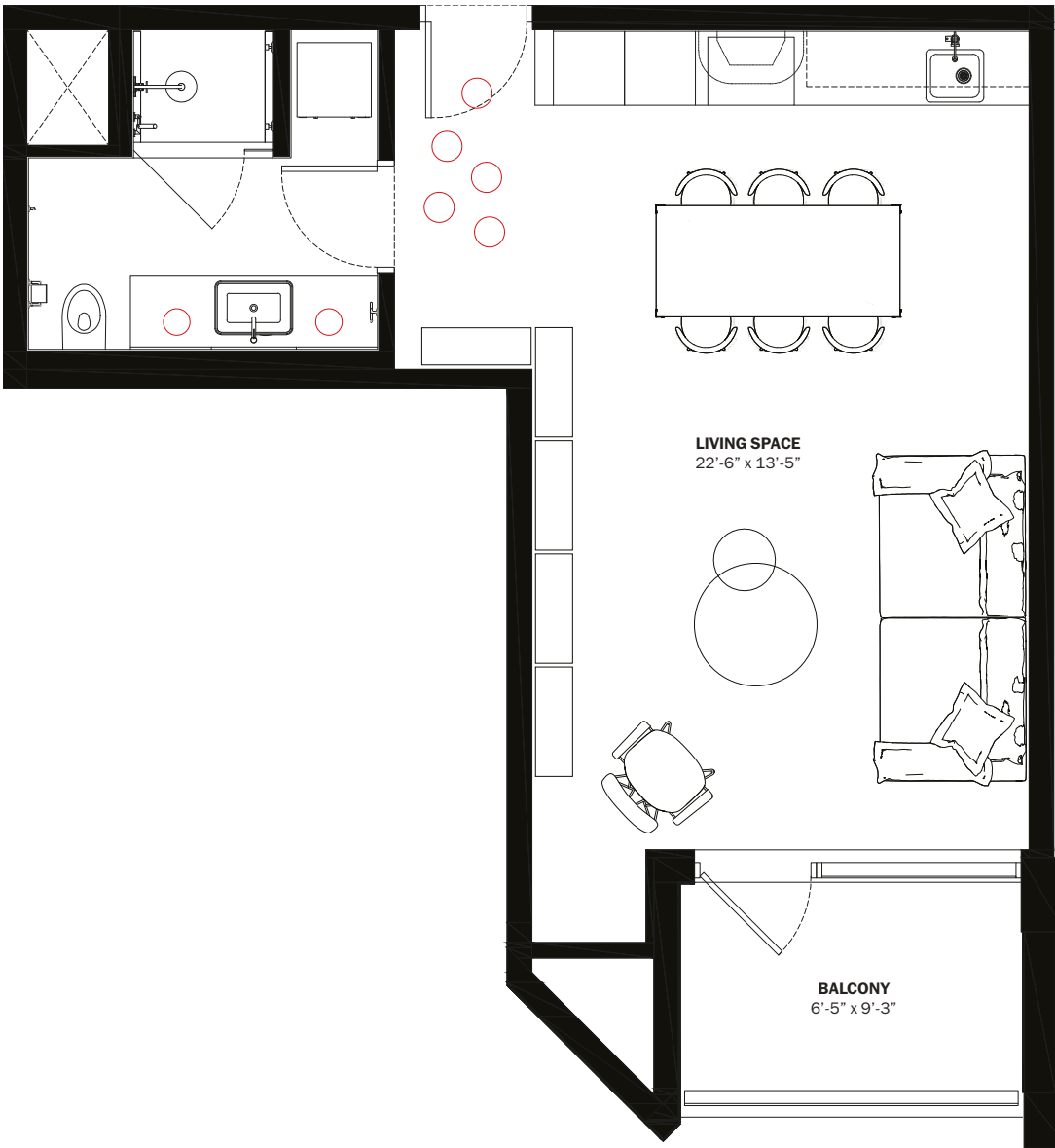
Diesel Wynwood
S Residences
Floor Plans





A5

INTERIORS AREA:	498 SQ FT	46.3 M ²
TERRACE AREA:	59 SQ FT	5.5 M ²
TOTAL RESIDENCE:	557 SQ FT	51.8 M ²
ID 407 - 4 TH LEVEL		




28th STREET



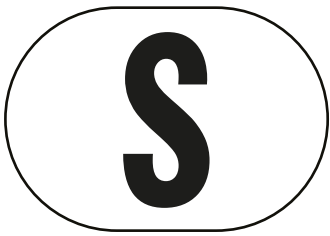
BELINVEST
CREATING VALUE

ONE | **Sotheby's**
INTERNATIONAL REALTY

DIESEL HEADQUARTERS
VIA DELL'INDUSTRIA 4/6, BREGANZE (VI)
45°41'30.7" N 11°33'41.8" E
DIESEL WYNWOOD CONDOMINIUM
148 NW 28TH ST. MIAMI, FL 33127
25°48'10.0" N 80°11'53.1" W
RR:55
© COPYRIGHT DIESEL - IND 1978

 ORAL REPRESENTATIONS CANNOT BE RELIED UPON AS CORRECTLY STATING THE REPRESENTATIONS OF THE DEVELOPER. FOR CORRECT REPRESENTATIONS, MAKE REFERENCE TO THIS BROCHURE AND TO THE DOCUMENTS REQUIRED BY SECTION 718.503, FLORIDA STATUTES, TO BE FURNISHED BY A DEVELOPER TO A BUYER OR LESSEE.

These materials are not intended to be an offer to sell, or solicitation to buy a unit in the condominium. Such an offering shall only be made pursuant to the prospectus (offering circular) for the condominium and no statements should be relied upon unless made in the prospectus or in the applicable purchase agreement. In no event shall any solicitation, offer or sale of a unit in the condominium be made in, or to residents of, any state or country in which such activity would be unlawful. This is not an offer to sell nor a solicitation to purchase a condominium unit directed to any person where such an offer or solicitation is prohibited by law unless the condominium is registered if required or exempt. All prices, plans, specifications, features, amenities and other descriptions are preliminary and are subject to change without notice, as provided in your purchase agreement. Stated square footages and dimensions are measured to the exterior boundaries of the exterior walls and the centerline of interior demising walls and in fact vary from the square footage and dimensions that would be determined by using the description and definition of the "Unit" set forth in the Declaration (which generally only includes the interior airspace between the perimeter walls and excludes all interior structural components and other common elements). This method is generally used in sales materials and is provided to allow a prospective buyer to compare the Units with units in other condominium projects that utilize the same method. Measurements of rooms set forth on this floor plan are generally taken at the farthest points of each given room (as if the room were a perfect rectangle), without regard for any cutouts or variations. Accordingly, the area of the actual room will typically be smaller than the product obtained by multiplying the stated length and width. All dimensions are estimates which will vary with actual construction, and all floor plans, specifications and other development plans are subject to change and will not necessarily accurately reflect the final plans and specifications for the development. All depictions of appliances, counters, soffits, floor coverings and other matters of detail, including, with out limitation, items of finish and decoration, are conceptual only and are not necessarily included in each Unit.



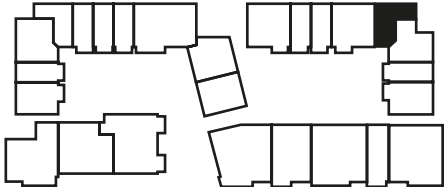
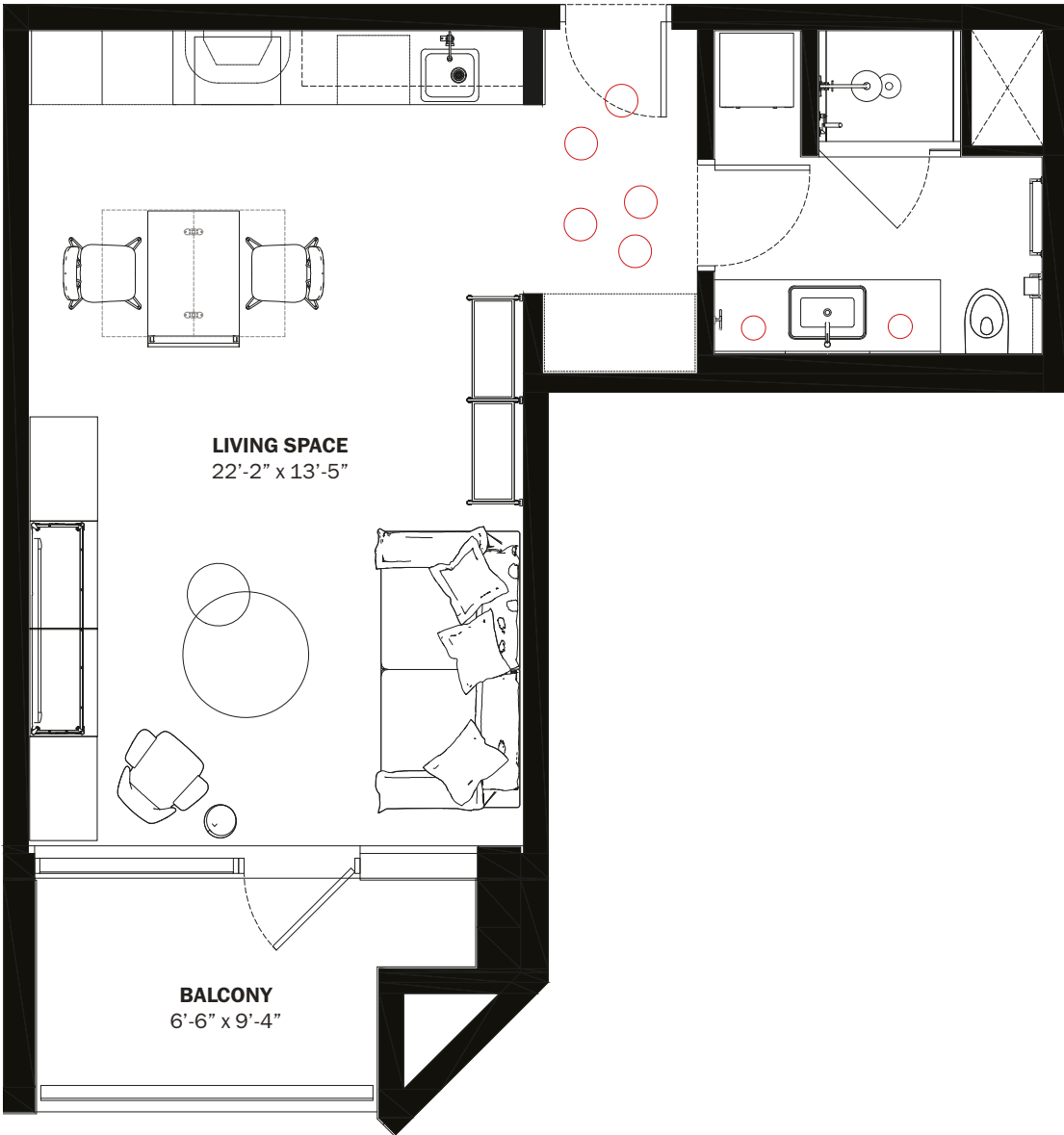
A6

INTERIORS AREA:480 SQ FT44.6 M²

TERRACE AREA:66 SQ FT6.2 M²

TOTAL RESIDENCE:546 SQ FT50.8 M²

ID 416 - 4TH LEVEL



28th STREET




BELINVEST
CREATING VALUE

ONE | Sotheby's
INTERNATIONAL REALTY

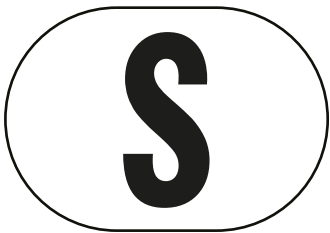
DIESEL HEADQUARTERS
VIA DELL'INDUSTRIA 4/6, BREGANZE (VI)
45°41'30.7" N 11°33'41.8" E

DIESEL WYNWOOD CONDOMINIUM
148 NW 28TH ST. MIAMI, FL 33127
25°48'10.0" N 80°11'53.1" W

RR:55
© COPYRIGHT DIESEL - IND 1978

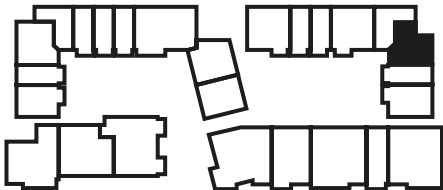
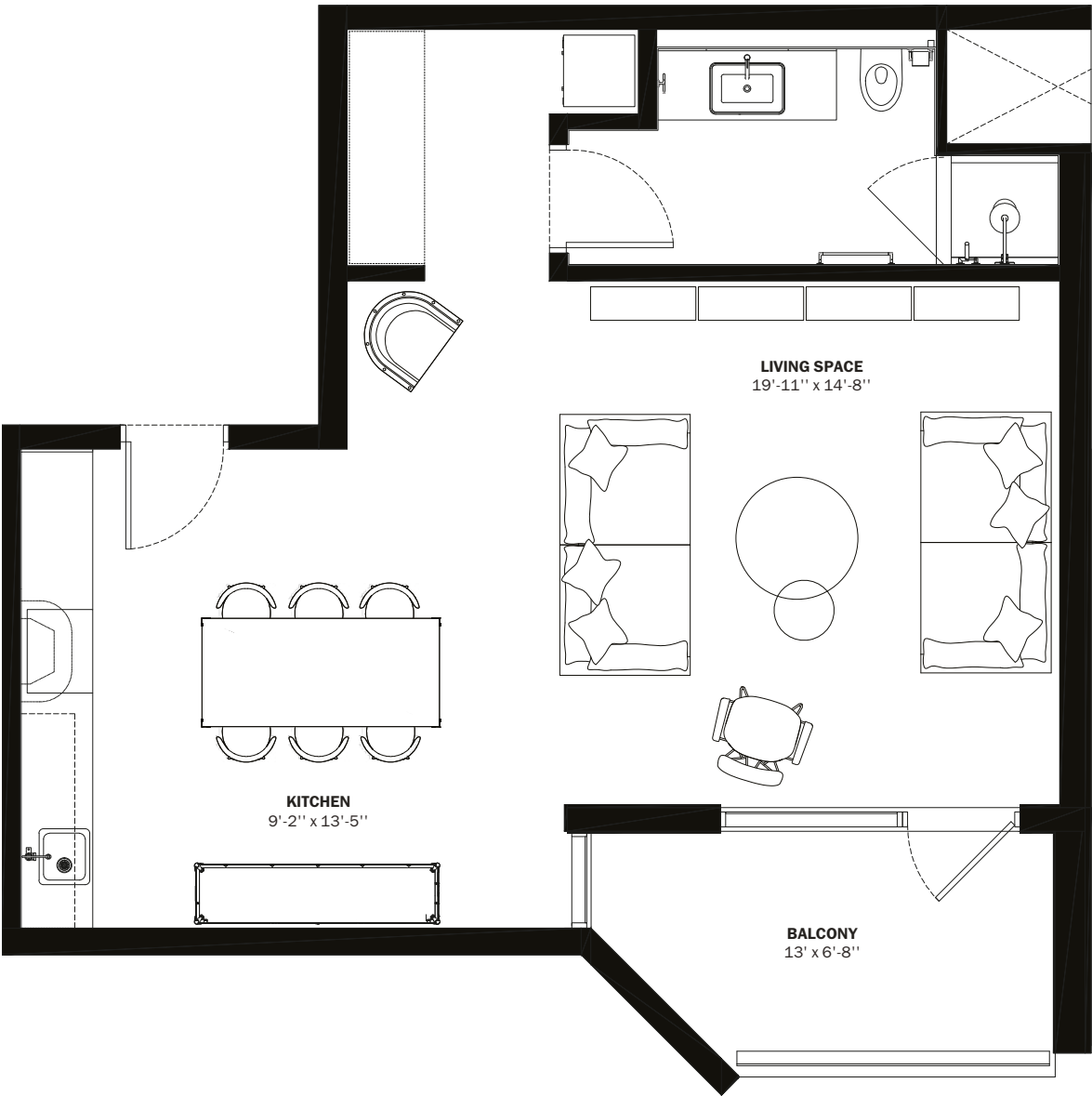
 ORAL REPRESENTATIONS CANNOT BE RELIED UPON AS CORRECTLY STATING THE REPRESENTATIONS OF THE DEVELOPER. FOR CORRECT REPRESENTATIONS, MAKE REFERENCE TO THIS BROCHURE AND TO THE DOCUMENTS REQUIRED BY SECTION 718.503, FLORIDA STATUTES, TO BE FURNISHED BY A DEVELOPER TO A BUYER OR LESSEE.

These materials are not intended to be an offer to sell, or solicitation to buy a unit in the condominium. Such an offering shall only be made pursuant to the prospectus (offering circular) for the condominium and no statements should be relied upon unless made in the prospectus or in the applicable purchase agreement. In no event shall any solicitation, offer or sale of a unit in the condominium be made in, or to residents of, any state or country in which such activity would be unlawful. This is not an offer to sell nor a solicitation to purchase a condominium unit directed to any person where such an offer or solicitation is prohibited by law unless the condominium is registered if required or exempt. All prices, plans, specifications, features, amenities and other descriptions are preliminary and are subject to change without notice, as provided in your purchase agreement. Stated square footages and dimensions are measured to the exterior boundaries of the exterior walls and the centerline of interior demising walls and in fact vary from the square footage and dimensions that would be determined by using the description and definition of the "Unit" set forth in the Declaration (which generally only includes the interior airspace between the perimeter walls and excludes all interior structural components and other common elements). This method is generally used in sales materials and is provided to allow a prospective buyer to compare the Units with units in other condominium projects that utilize the same method. Measurements of rooms set forth on this floor plan are generally taken at the farthest points of each given room (as if the room were a perfect rectangle), without regard for any cutouts or variations. Accordingly, the area of the actual room will typically be smaller than the product obtained by multiplying the stated length and width. All dimensions are estimates which will vary with actual construction, and all floor plans, specifications and other development plans are subject to change and will not necessarily accurately reflect the final plans and specifications for the development. All depictions of appliances, counters, soffits, floor coverings and other matters of detail, including, with out limitation, items of finish and decoration, are conceptual only and are not necessarily included in each Unit.



A7

INTERIORS AREA:	636 SQ FT	59.1 M ²
TERRACE AREA:	81 SQ FT	7.6 M ²
TOTAL RESIDENCE:	717 SQ FT	66.7 M ²
ID 717 - 7 TH LEVEL		



28th STREET




BELINVEST
CREATING VALUE

ONE | **Sotheby's**
INTERNATIONAL REALTY

DIESEL HEADQUARTERS
VIA DELL'INDUSTRIA 4/6, BREGANZE (VI)
45°41'30.7" N 11°33'41.8" E
DIESEL WYNWOOD CONDOMINIUM
148 NW 28TH ST. MIAMI, FL 33127
25°48'10.0" N 80°11'53.1" W

RR:55
© COPYRIGHT DIESEL - IND 1978

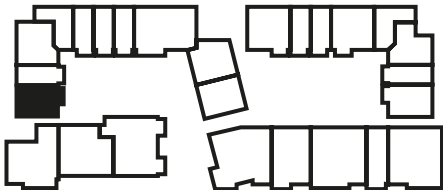
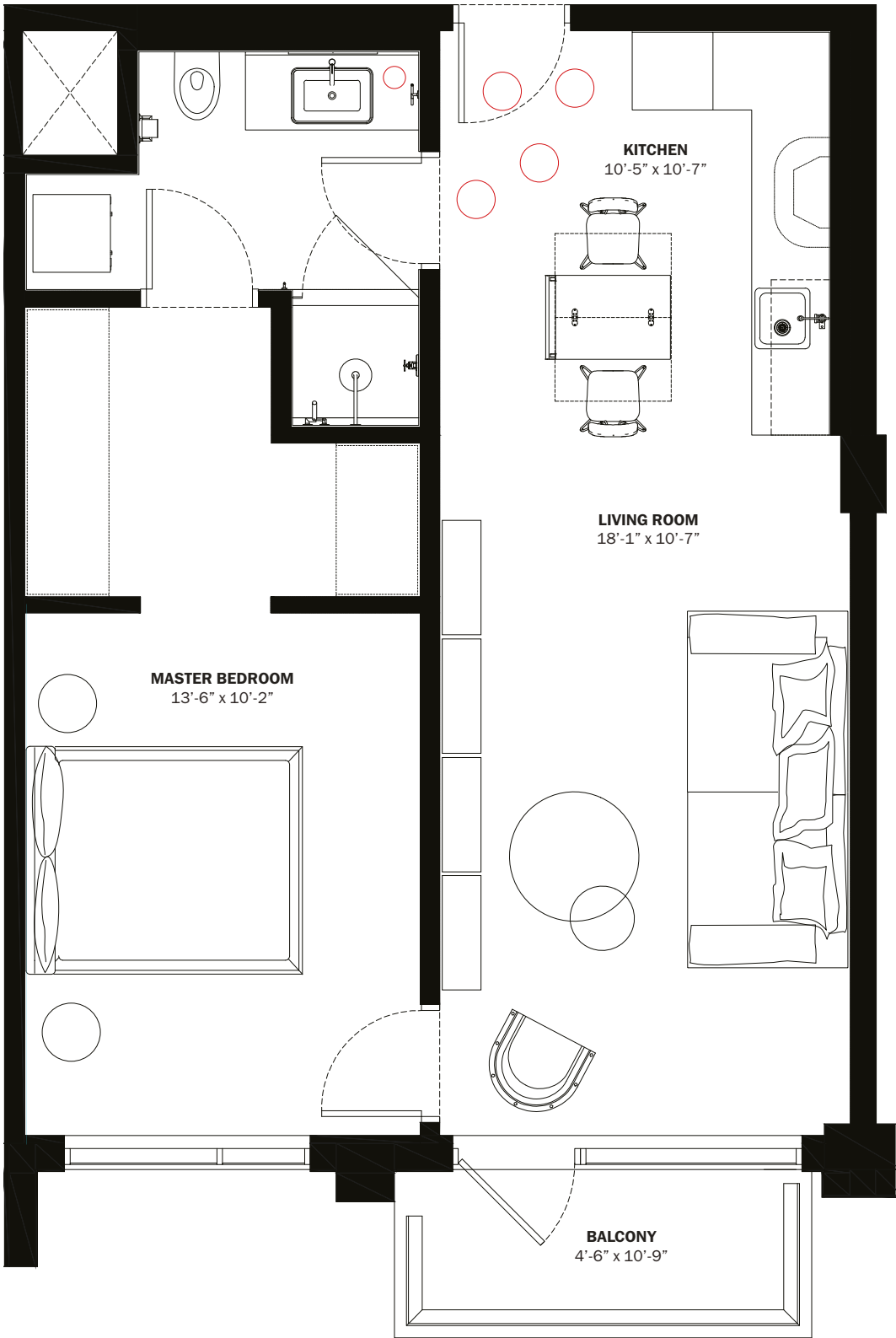
 ORAL REPRESENTATIONS CANNOT BE RELIED UPON AS CORRECTLY STATING THE REPRESENTATIONS OF THE DEVELOPER. FOR CORRECT REPRESENTATIONS, MAKE REFERENCE TO THIS BROCHURE AND TO THE DOCUMENTS REQUIRED BY SECTION 718.503, FLORIDA STATUTES, TO BE FURNISHED BY A DEVELOPER TO A BUYER OR LESSEE.

These materials are not intended to be an offer to sell, or solicitation to buy a unit in the condominium. Such an offering shall only be made pursuant to the prospectus (offering circular) for the condominium and no statements should be relied upon unless made in the prospectus or in the applicable purchase agreement. In no event shall any solicitation, offer or sale of a unit in the condominium be made in, or to residents of, any state or country in which such activity would be unlawful. This is not an offer to sell nor a solicitation to purchase a condominium unit directed to any person where such an offer or solicitation is prohibited by law unless the condominium is registered if required or exempt. All prices, plans, specifications, features, amenities and other descriptions are preliminary and are subject to change without notice, as provided in your purchase agreement. Stated square footages and dimensions are measured to the exterior boundaries of the exterior walls and the centerline of interior demising walls and in fact vary from the square footage and dimensions that would be determined by using the description and definition of the "Unit" set forth in the Declaration (which generally only includes the interior airspace between the perimeter walls and excludes all interior structural components and other common elements). This method is generally used in sales materials and is provided to allow a prospective buyer to compare the Units with units in other condominium projects that utilize the same method. Measurements of rooms set forth on this floor plan are generally taken at the farthest points of each given room (as if the room were a perfect rectangle), without regard for any cutouts or variations. Accordingly, the area of the actual room will typically be smaller than the product obtained by multiplying the stated length and width. All dimensions are estimates which will vary with actual construction, and all floor plans, specifications and other development plans are subject to change and will not necessarily accurately reflect the final plans and specifications for the development. All depictions of appliances, counters, soffits, floor coverings and other matters of detail, including, with out limitation, items of finish and decoration, are conceptual only and are not necessarily included in each Unit.



B1

INTERIORS AREA:	666 SQ FT	61.9 M ²
TERRACE AREA:	57 SQ FT	5.3 M ²
TOTAL RESIDENCE:	723 SQ FT	67.2 M ²
ID 604 - 6 TH LEVEL		




BELINVEST
CREATING VALUE

ONE | Sotheby's
INTERNATIONAL REALTY

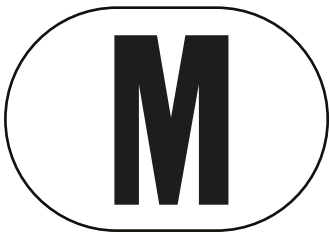
DIESEL HEADQUARTERS
VIA DELL'INDUSTRIA 4/6, BREGANZE (VI)
45°41'30.7" N 11°33'41.8" E

DIESEL WYNWOOD CONDOMINIUM
148 NW 28TH ST. MIAMI, FL 33127
25°48'10.0" N 80°11'53.1" W

RR:55
© COPYRIGHT DIESEL - IND 1978

 ORAL REPRESENTATIONS CANNOT BE RELIED UPON AS CORRECTLY STATING THE REPRESENTATIONS OF THE DEVELOPER. FOR CORRECT REPRESENTATIONS, MAKE REFERENCE TO THIS BROCHURE AND TO THE DOCUMENTS REQUIRED BY SECTION 718.503, FLORIDA STATUTES, TO BE FURNISHED BY A DEVELOPER TO A BUYER OR LESSEE.

These materials are not intended to be an offer to sell, or solicitation to buy a unit in the condominium. Such an offering shall only be made pursuant to the prospectus (offering circular) for the condominium and no statements should be relied upon unless made in the prospectus or in the applicable purchase agreement. In no event shall any solicitation, offer or sale of a unit in the condominium be made in, or to residents of, any state or country in which such activity would be unlawful. This is not an offer to sell nor a solicitation to purchase a condominium unit directed to any person where such an offer or solicitation is prohibited by law unless the condominium is registered if required or exempt. All prices, plans, specifications, features, amenities and other descriptions are preliminary and are subject to change without notice, as provided in your purchase agreement. Stated square footages and dimensions are measured to the exterior boundaries of the exterior walls and the centerline of interior demising walls and in fact vary from the square footage and dimensions that would be determined by using the description and definition of the "Unit" set forth in the Declaration (which generally only includes the interior airspace between the perimeter walls and excludes all interior structural components and other common elements). This method is generally used in sales materials and is provided to allow a prospective buyer to compare the Units with units in other condominium projects that utilize the same method. Measurements of rooms set forth on this floor plan are generally taken at the farthest points of each given room (as if the room were a perfect rectangle), without regard for any cutouts or variations. Accordingly, the area of the actual room will typically be smaller than the product obtained by multiplying the stated length and width. All dimensions are estimates which will vary with actual construction, and all floor plans, specifications and other development plans are subject to change and will not necessarily accurately reflect the final plans and specifications for the development. All depictions of appliances, counters, soffits, floor coverings and other matters of detail, including, with out limitation, items of finish and decoration, are conceptual only and are not necessarily included in each Unit.

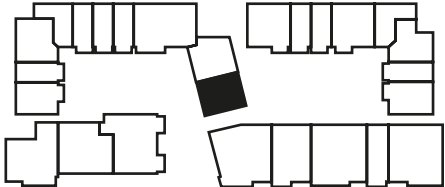
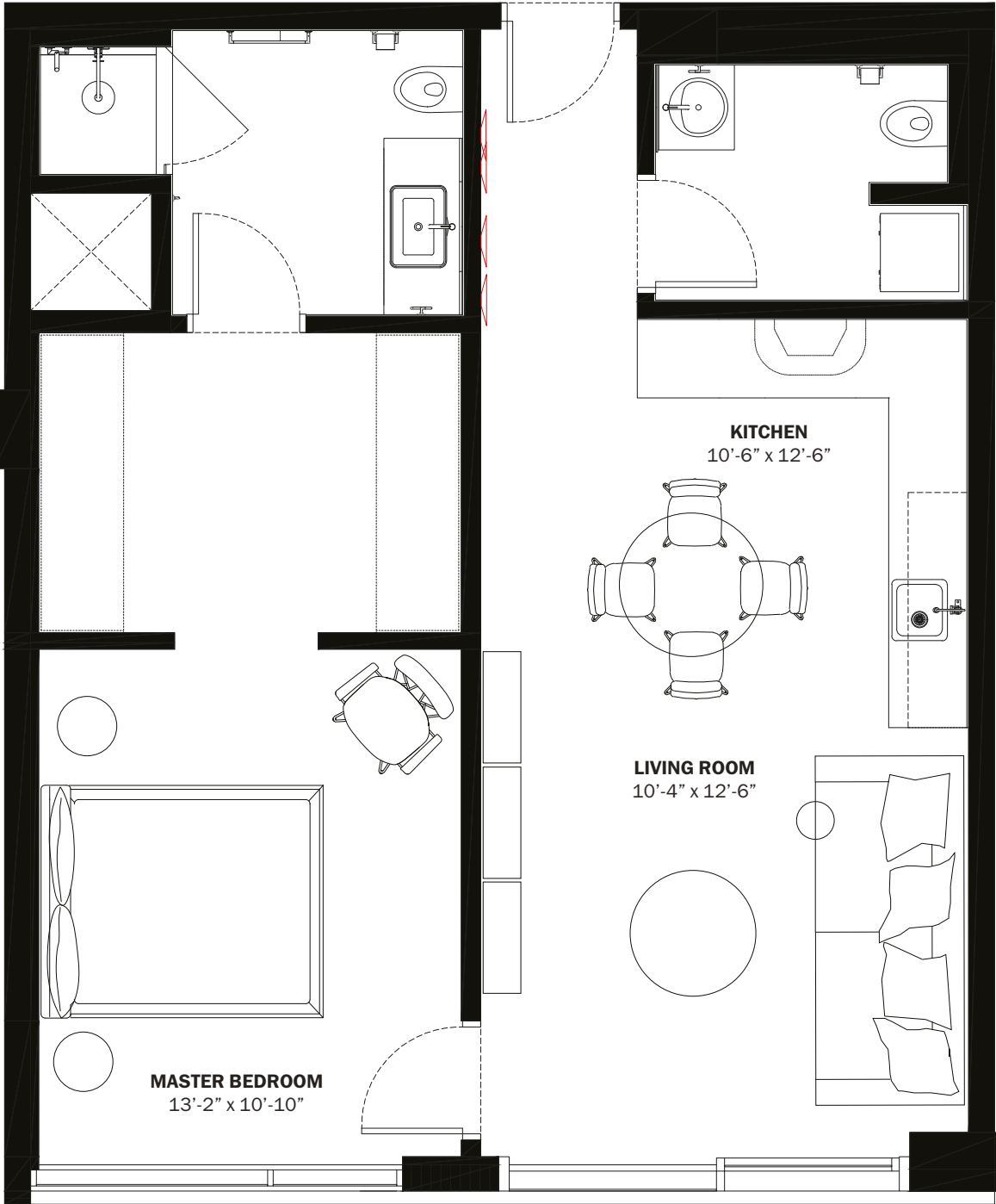


B2

INTERIORS AREA:748 SQ FT69.5 M²

TOTAL RESIDENCE:748 SQ FT69.5 M²

ID 525 - 5TH LEVEL



28th STREET




BELINVEST
CREATING VALUE

ONE | Sotheby's
INTERNATIONAL REALTY

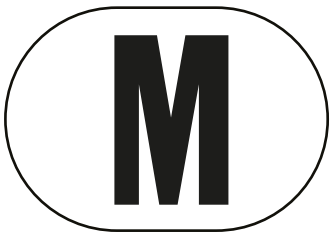
DIESEL HEADQUARTERS
VIA DELL'INDUSTRIA 4/6, BREGANZE (VI)
45°41'30.7" N 11°33'41.8" E

DIESEL WYNWOOD CONDOMINIUM
148 NW 28TH ST. MIAMI, FL 33127
25°48'10.0" N 80°11'53.1" W

RR:55
© COPYRIGHT DIESEL - IND 1978

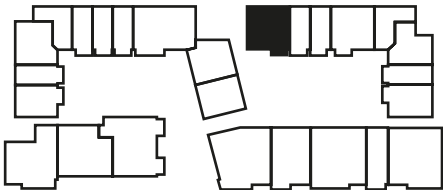
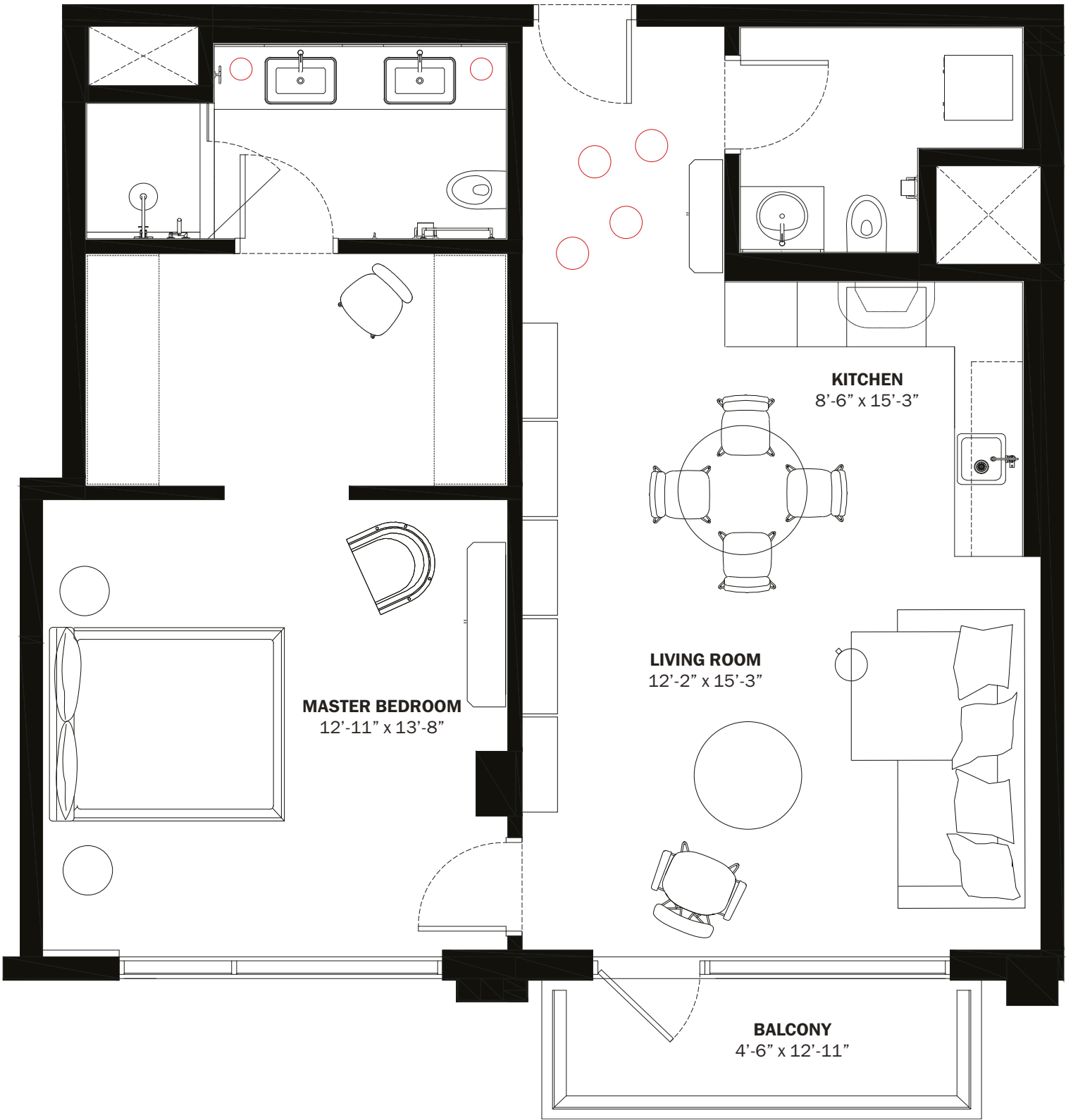
 ORAL REPRESENTATIONS CANNOT BE RELIED UPON AS CORRECTLY STATING THE REPRESENTATIONS OF THE DEVELOPER. FOR CORRECT REPRESENTATIONS, MAKE REFERENCE TO THIS BROCHURE AND TO THE DOCUMENTS REQUIRED BY SECTION 718.503, FLORIDA STATUTES, TO BE FURNISHED BY A DEVELOPER TO A BUYER OR LESSEE.

These materials are not intended to be an offer to sell, or solicitation to buy a unit in the condominium. Such an offering shall only be made pursuant to the prospectus (offering circular) for the condominium and no statements should be relied upon unless made in the prospectus or in the applicable purchase agreement. In no event shall any solicitation, offer or sale of a unit in the condominium be made in, or to residents of, any state or country in which such activity would be unlawful. This is not an offer to sell nor a solicitation to purchase a condominium unit directed to any person where such an offer or solicitation is prohibited by law unless the condominium is registered if required or exempt. All prices, plans, specifications, features, amenities and other descriptions are preliminary and are subject to change without notice, as provided in your purchase agreement. Stated square footages and dimensions are measured to the exterior boundaries of the exterior walls and the centerline of interior demising walls and in fact vary from the square footage and dimensions that would be determined by using the description and definition of the "Unit" set forth in the Declaration (which generally only includes the interior airspace between the perimeter walls and excludes all interior structural components and other common elements). This method is generally used in sales materials and is provided to allow a prospective buyer to compare the Units with units in other condominium projects that utilize the same method. Measurements of rooms set forth on this floor plan are generally taken at the farthest points of each given room (as if the room were a perfect rectangle), without regard for any cutouts or variations. Accordingly, the area of the actual room will typically be smaller than the product obtained by multiplying the stated length and width. All dimensions are estimates which will vary with actual construction, and all floor plans, specifications and other development plans are subject to change and will not necessarily accurately reflect the final plans and specifications for the development. All depictions of appliances, counters, soffits, floor coverings and other matters of detail, including, with out limitation, items of finish and decoration, are conceptual only and are not necessarily included in each Unit.



B3

INTERIORS AREA:	892 SQ FT	82.9 M ²
TERRACE AREA:	73 SQ FT	6.8 M ²
TOTAL RESIDENCE:	965 SQ FT	89.7 M ²
ID 312 - 3 RD LEVEL		




BELINVEST
CREATING VALUE

ONE | **Sotheby's**
INTERNATIONAL REALTY

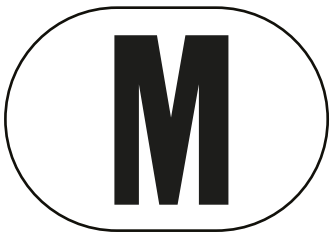
DIESEL HEADQUARTERS
VIA DELL'INDUSTRIA 4/6, BREGANZE (VI)
45°41'30.7" N 11°33'41.8" E

DIESEL WYNWOOD CONDOMINIUM
148 NW 28TH ST. MIAMI, FL 33127
25°48'10.0" N 80°11'53.1" W

RR:55
© COPYRIGHT DIESEL - IND 1978

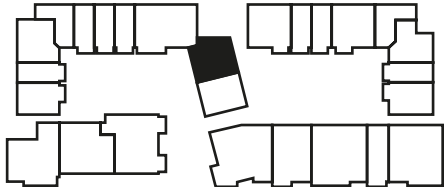
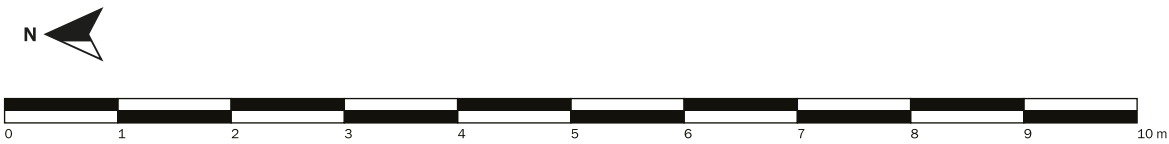
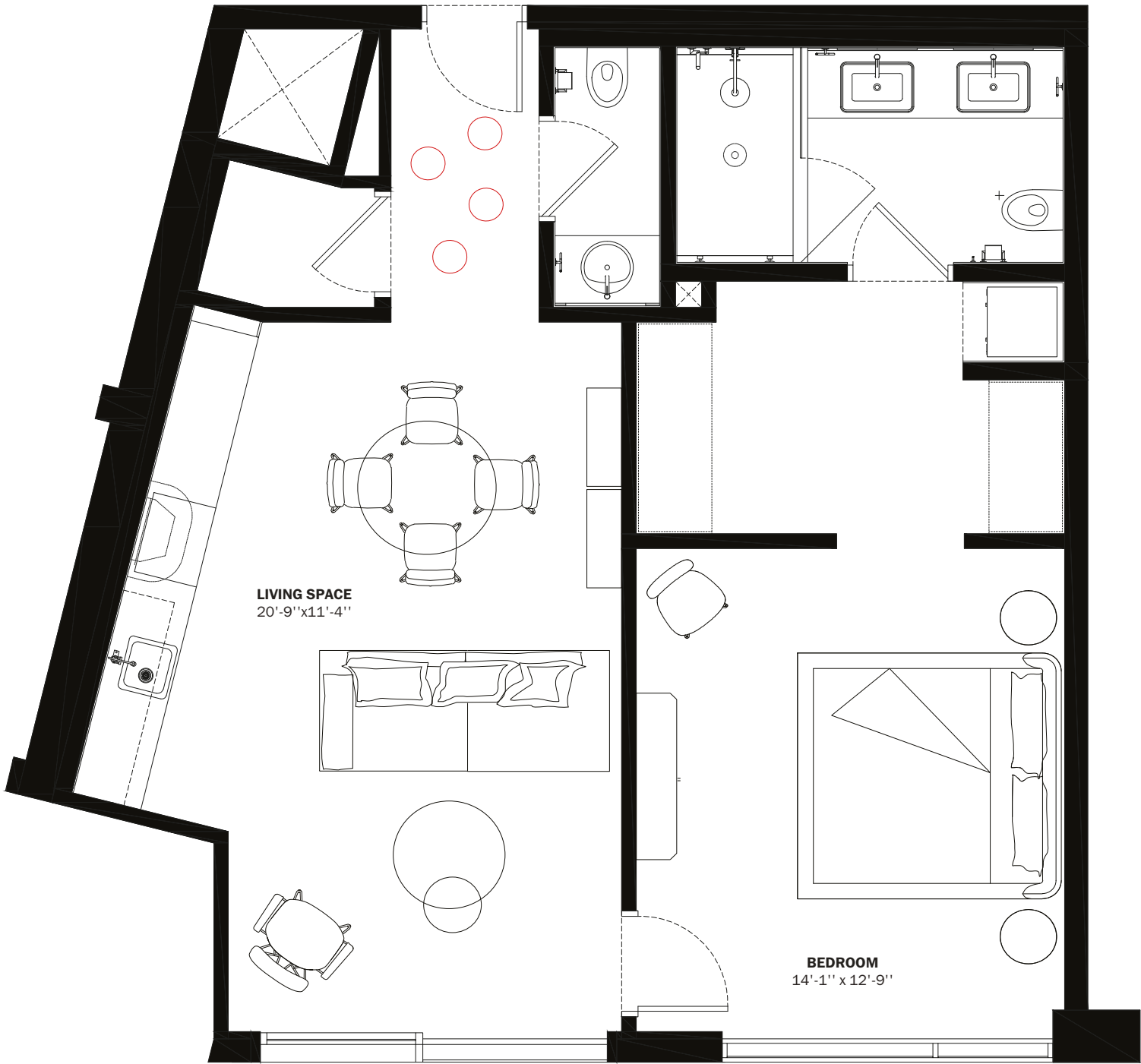
 ORAL REPRESENTATIONS CANNOT BE RELIED UPON AS CORRECTLY STATING THE REPRESENTATIONS OF THE DEVELOPER. FOR CORRECT REPRESENTATIONS, MAKE REFERENCE TO THIS BROCHURE AND TO THE DOCUMENTS REQUIRED BY SECTION 718.503, FLORIDA STATUTES, TO BE FURNISHED BY A DEVELOPER TO A BUYER OR LESSEE.

These materials are not intended to be an offer to sell, or solicitation to buy a unit in the condominium. Such an offering shall only be made pursuant to the prospectus (offering circular) for the condominium and no statements should be relied upon unless made in the prospectus or in the applicable purchase agreement. In no event shall any solicitation, offer or sale of a unit in the condominium be made in, or to residents of, any state or country in which such activity would be unlawful. This is not an offer to sell nor a solicitation to purchase a condominium unit directed to any person where such an offer or solicitation is prohibited by law unless the condominium is registered if required or exempt. All prices, plans, specifications, features, amenities and other descriptions are preliminary and are subject to change without notice, as provided in your purchase agreement. Stated square footages and dimensions are measured to the exterior boundaries of the exterior walls and the centerline of interior demising walls and in fact vary from the square footage and dimensions that would be determined by using the description and definition of the "Unit" set forth in the Declaration (which generally only includes the interior airspace between the perimeter walls and excludes all interior structural components and other common elements). This method is generally used in sales materials and is provided to allow a prospective buyer to compare the Units with units in other condominium projects that utilize the same method. Measurements of rooms set forth on this floor plan are generally taken at the farthest points of each given room (as if the room were a perfect rectangle), without regard for any cutouts or variations. Accordingly, the area of the actual room will typically be smaller than the product obtained by multiplying the stated length and width. All dimensions are estimates which will vary with actual construction, and all floor plans, specifications and other development plans are subject to change and will not necessarily accurately reflect the final plans and specifications for the development. All depictions of appliances, counters, soffits, floor coverings and other matters of detail, including, with out limitation, items of finish and decoration, are conceptual only and are not necessarily included in each Unit.



B4

INTERIORS AREA: 807 SQ FT 75 M²
TOTAL RESIDENCE: 807 SQ FT 75 M²
ID 426 - 4TH LEVEL




28th STREET

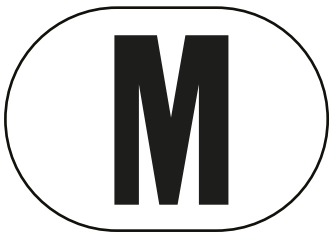


BELINVEST
CREATING VALUE

ONE | **Sotheby's**
INTERNATIONAL REALTY

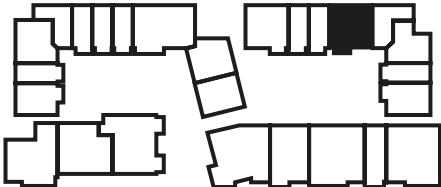
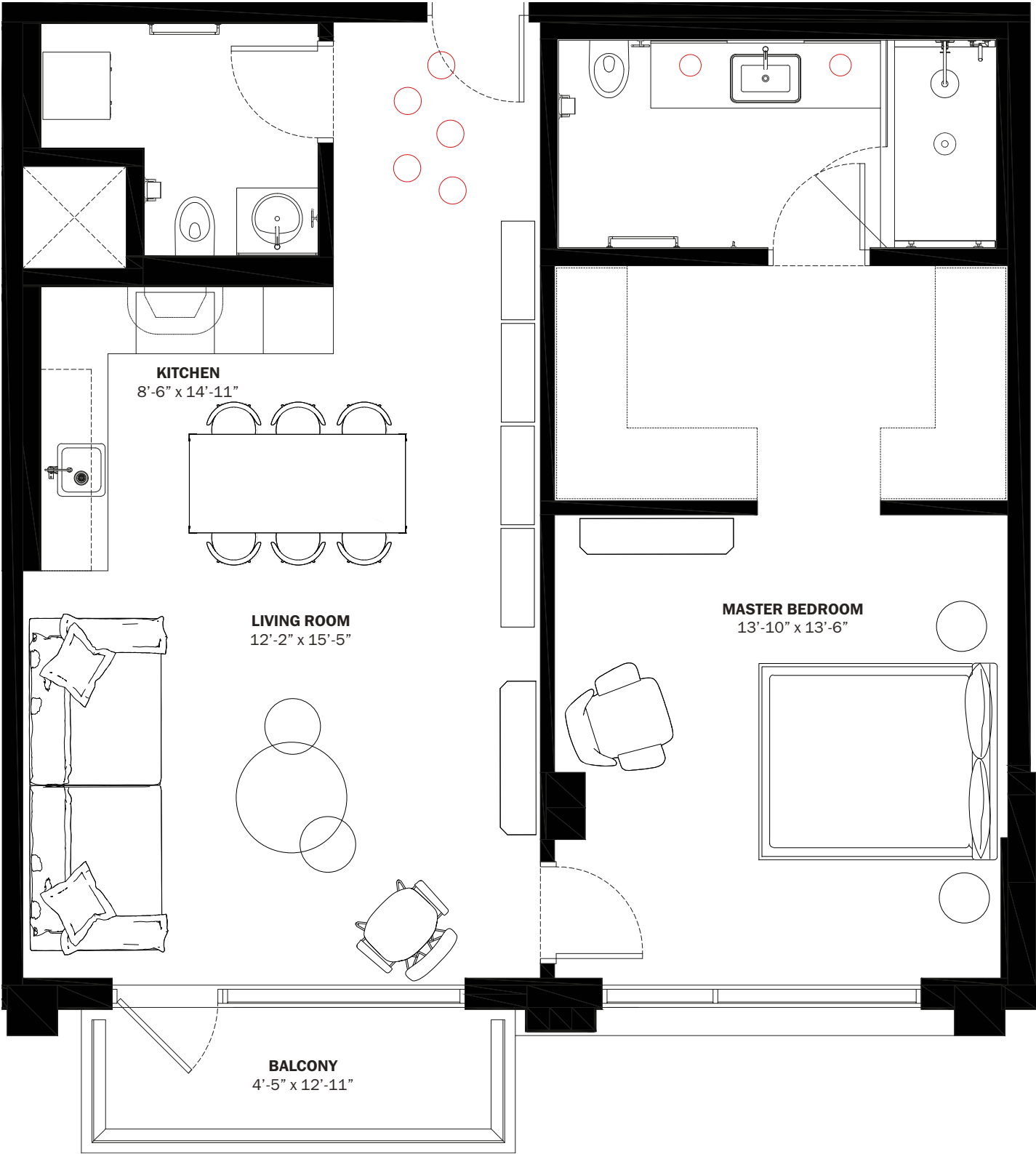
DIESEL HEADQUARTERS
VIA DELL'INDUSTRIA 4/6, BREGANZE (VI)
45°41'30.7" N 11°33'41.8" E
DIESEL WYNWOOD CONDOMINIUM
148 NW 28TH ST. MIAMI, FL 33127
25°48'10.0" N 80°11'53.1" W
RR:55
© COPYRIGHT DIESEL - IND 1978

 ORAL REPRESENTATIONS CANNOT BE RELIED UPON AS CORRECTLY STATING THE REPRESENTATIONS OF THE DEVELOPER. FOR CORRECT REPRESENTATIONS, MAKE REFERENCE TO THIS BROCHURE AND TO THE DOCUMENTS REQUIRED BY SECTION 718.503, FLORIDA STATUTES, TO BE FURNISHED BY A DEVELOPER TO A BUYER OR LESSEE.
These materials are not intended to be an offer to sell, or solicitation to buy a unit in the condominium. Such an offering shall only be made pursuant to the prospectus (offering circular) for the condominium and no statements should be relied upon unless made in the prospectus or in the applicable purchase agreement. In no event shall any solicitation, offer or sale of a unit in the condominium be made in, or to residents of, any state or country in which such activity would be unlawful. This is not an offer to sell nor a solicitation to purchase a condominium unit directed to any person where such an offer or solicitation is prohibited by law unless the condominium is registered if required or exempt. All prices, plans, specifications, features, amenities and other descriptions are preliminary and are subject to change without notice, as provided in your purchase agreement. Stated square footages and dimensions are measured to the exterior boundaries of the exterior walls and the centerline of interior demising walls and in fact vary from the square footage and dimensions that would be determined by using the description and definition of the "Unit" set forth in the Declaration (which generally only includes the interior airspace between the perimeter walls and excludes all interior structural components and other common elements). This method is generally used in sales materials and is provided to allow a prospective buyer to compare the Units with units in other condominium projects that utilize the same method. Measurements of rooms set forth on this floor plan are generally taken at the farthest points of each given room (as if the room were a perfect rectangle), without regard for any cutouts or variations. Accordingly, the area of the actual room will typically be smaller than the product obtained by multiplying the stated length and width. All dimensions are estimates which will vary with actual construction, and all floor plans, specifications and other development plans are subject to change and will not necessarily accurately reflect the final plans and specifications for the development. All depictions of appliances, counters, soffits, floor coverings and other matters of detail, including, with out limitation, items of finish and decoration, are conceptual only and are not necessarily included in each Unit.



B7

INTERIORS AREA:	903 SQ FT	83.9 M ²
TERRACE AREA:	73 SQ FT	6.8 M ²
TOTAL RESIDENCE:	976 SQ FT	90.7 M ²
ID 415 - 4 TH LEVEL		




BELINVEST
CREATING VALUE

ONE | Sotheby's
INTERNATIONAL REALTY

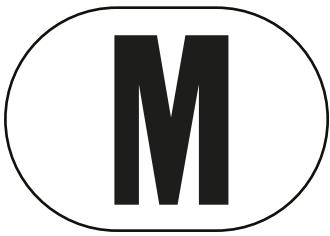
DIESEL HEADQUARTERS
VIA DELL'INDUSTRIA 4/6, BREGANZE (VI)
45°41'30.7" N 11°33'41.8" E

DIESEL WYNWOOD CONDOMINIUM
148 NW 28TH ST. MIAMI, FL 33127
25°48'10.0" N 80°11'53.1" W

RR:55
© COPYRIGHT DIESEL - IND 1978

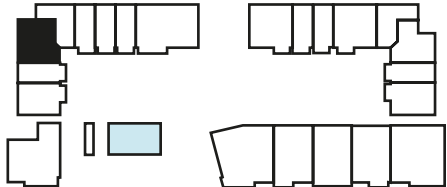
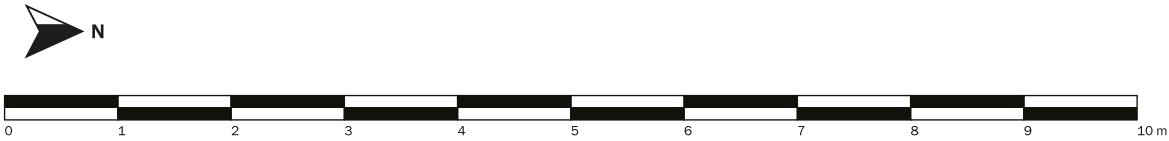
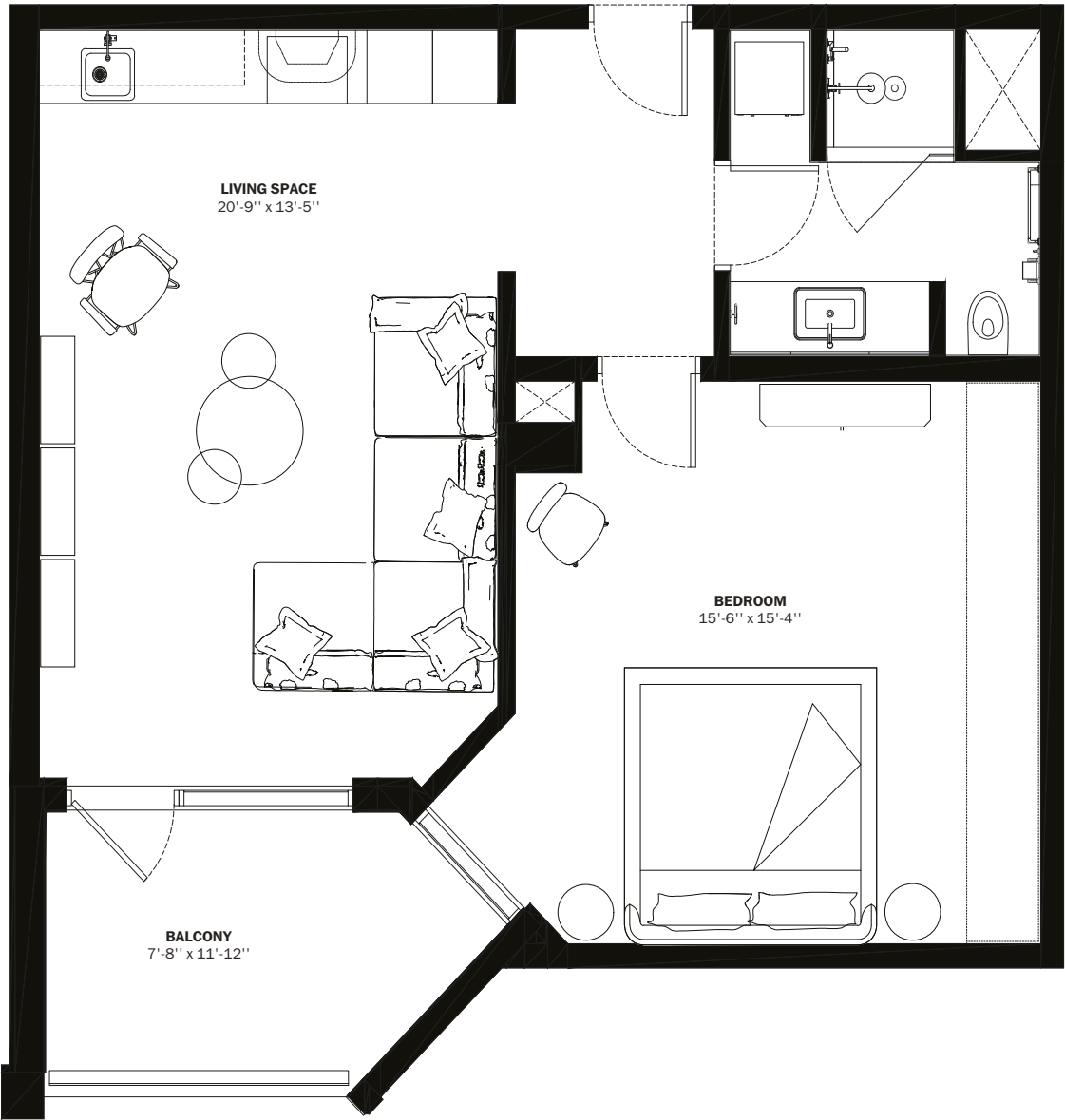
 ORAL REPRESENTATIONS CANNOT BE RELIED UPON AS CORRECTLY STATING THE REPRESENTATIONS OF THE DEVELOPER. FOR CORRECT REPRESENTATIONS, MAKE REFERENCE TO THIS BROCHURE AND TO THE DOCUMENTS REQUIRED BY SECTION 718.503, FLORIDA STATUTES, TO BE FURNISHED BY A DEVELOPER TO A BUYER OR LESSEE.

These materials are not intended to be an offer to sell, or solicitation to buy a unit in the condominium. Such an offering shall only be made pursuant to the prospectus (offering circular) for the condominium and no statements should be relied upon unless made in the prospectus or in the applicable purchase agreement. In no event shall any solicitation, offer or sale of a unit in the condominium be made in, or to residents of, any state or country in which such activity would be unlawful. This is not an offer to sell nor a solicitation to purchase a condominium unit directed to any person where such an offer or solicitation is prohibited by law unless the condominium is registered if required or exempt. All prices, plans, specifications, features, amenities and other descriptions are preliminary and are subject to change without notice, as provided in your purchase agreement. Stated square footages and dimensions are measured to the exterior boundaries of the exterior walls and the centerline of interior demising walls and in fact vary from the square footage and dimensions that would be determined by using the description and definition of the "Unit" set forth in the Declaration (which generally only includes the interior airspace between the perimeter walls and excludes all interior structural components and other common elements). This method is generally used in sales materials and is provided to allow a prospective buyer to compare the Units with units in other condominium projects that utilize the same method. Measurements of rooms set forth on this floor plan are generally taken at the farthest points of each given room (as if the room were a perfect rectangle), without regard for any cutouts or variations. Accordingly, the area of the actual room will typically be smaller than the product obtained by multiplying the stated length and width. All dimensions are estimates which will vary with actual construction, and all floor plans, specifications and other development plans are subject to change and will not necessarily accurately reflect the final plans and specifications for the development. All depictions of appliances, counters, soffits, floor coverings and other matters of detail, including, with out limitation, items of finish and decoration, are conceptual only and are not necessarily included in each Unit.



B8

INTERIORS AREA:	734 SQ FT	68.2 M ²
TERRACE AREA:	91 SQ FT	8.5 M ²
TOTAL RESIDENCE:	825 SQ FT	76.7 M ²
ID 706 - 7 TH LEVEL		



28th STREET




BELINVEST
CREATING VALUE

ONE | Sotheby's
INTERNATIONAL REALTY

DIESEL HEADQUARTERS
VIA DELL'INDUSTRIA 4/6, BREGANZE (VI)
45°41'30.7" N 11°33'41.8" E

DIESEL WYNWOOD CONDOMINIUM
148 NW 28TH ST. MIAMI, FL 33127
25°48'10.0" N 80°11'53.1" W

RR:55
© COPYRIGHT DIESEL - IND 1978

 ORAL REPRESENTATIONS CANNOT BE RELIED UPON AS CORRECTLY STATING THE REPRESENTATIONS OF THE DEVELOPER. FOR CORRECT REPRESENTATIONS, MAKE REFERENCE TO THIS BROCHURE AND TO THE DOCUMENTS REQUIRED BY SECTION 718.503, FLORIDA STATUTES, TO BE FURNISHED BY A DEVELOPER TO A BUYER OR LESSEE.

These materials are not intended to be an offer to sell, or solicitation to buy a unit in the condominium. Such an offering shall only be made pursuant to the prospectus (offering circular) for the condominium and no statements should be relied upon unless made in the prospectus or in the applicable purchase agreement. In no event shall any solicitation, offer or sale of a unit in the condominium be made in, or to residents of, any state or country in which such activity would be unlawful. This is not an offer to sell nor a solicitation to purchase a condominium unit directed to any person where such an offer or solicitation is prohibited by law unless the condominium is registered if required or exempt. All prices, plans, specifications, features, amenities and other descriptions are preliminary and are subject to change without notice, as provided in your purchase agreement. Stated square footages and dimensions are measured to the exterior boundaries of the exterior walls and the centerline of interior demising walls and in fact vary from the square footage and dimensions that would be determined by using the description and definition of the "Unit" set forth in the Declaration (which generally only includes the interior airspace between the perimeter walls and excludes all interior structural components and other common elements). This method is generally used in sales materials and is provided to allow a prospective buyer to compare the Units with units in other condominium projects that utilize the same method. Measurements of rooms set forth on this floor plan are generally taken at the farthest points of each given room (as if the room were a perfect rectangle), without regard for any cutouts or variations. Accordingly, the area of the actual room will typically be smaller than the product obtained by multiplying the stated length and width. All dimensions are estimates which will vary with actual construction, and all floor plans, specifications and other development plans are subject to change and will not necessarily accurately reflect the final plans and specifications for the development. All depictions of appliances, counters, soffits, floor coverings and other matters of detail, including, with out limitation, items of finish and decoration, are conceptual only and are not necessarily included in each Unit.

L

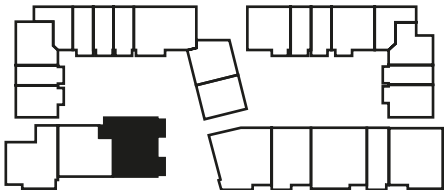
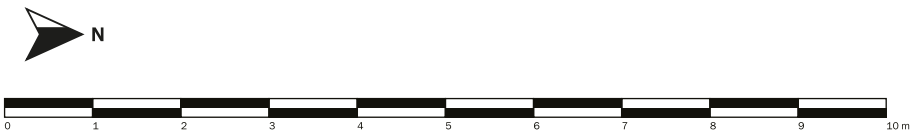
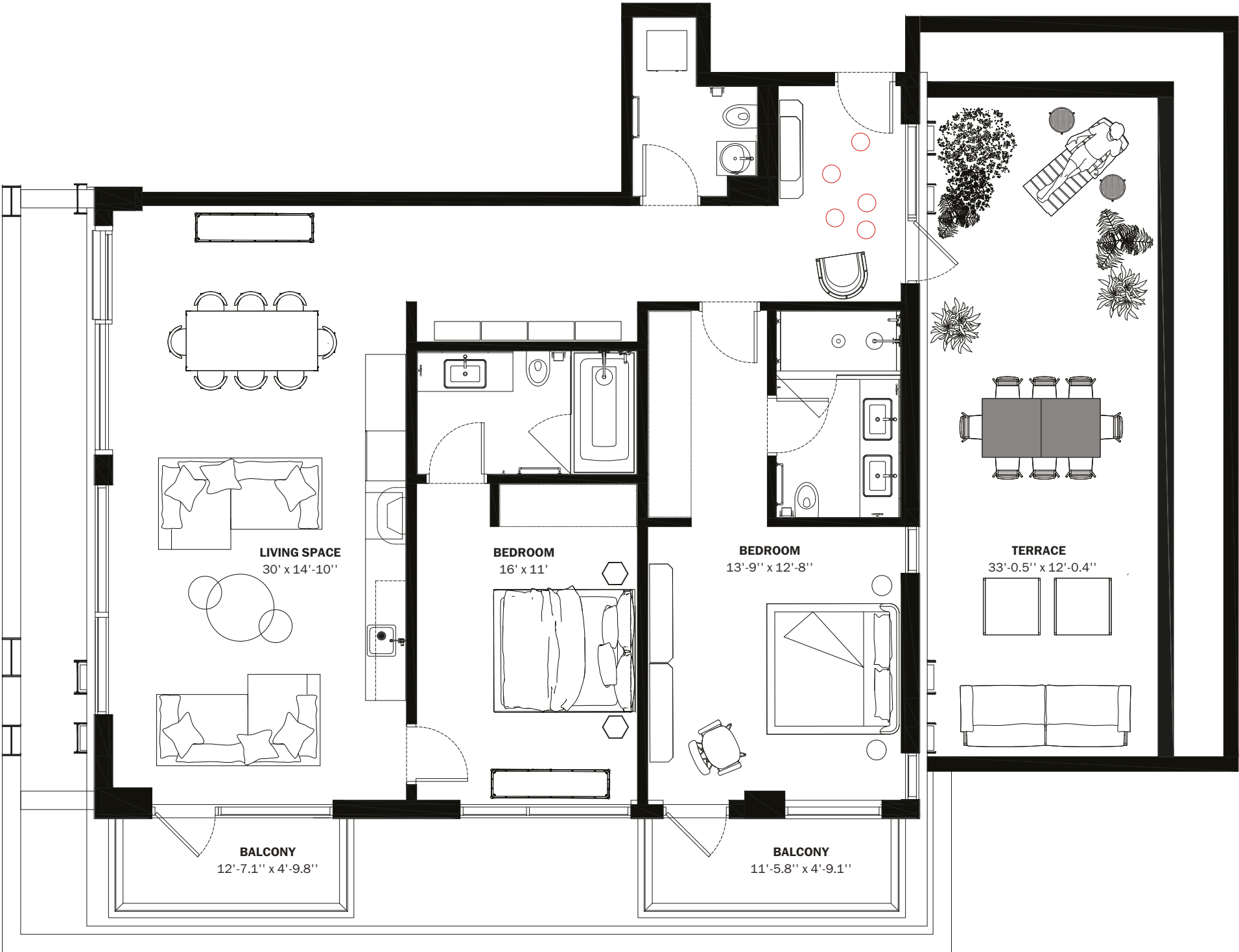
D3

INTERIORS AREA:1,387 SQ FT128.9 M²

TERRACE AREA:725 SQ FT67.4 M²

TOTAL RESIDENCE:2,112 SQ FT196.3 M²

ID 201 - 2ND LEVEL



28th STREET



BELINVEST
CREATING VALUE

ONE | **Sotheby's**
INTERNATIONAL REALTY

DIESEL HEADQUARTERS
VIA DELL'INDUSTRIA 4/6, BREGANZE (VI)
45°41'30.7" N 11°33'41.8" E

DIESEL WYNWOOD CONDOMINIUM
148 NW 28TH ST. MIAMI, FL 33127
25°48'10.0" N 80°11'53.1" W

RR:55
© COPYRIGHT DIESEL - IND 1978

ORAL REPRESENTATIONS CANNOT BE RELIED UPON AS CORRECTLY STATING THE REPRESENTATIONS OF THE DEVELOPER. FOR CORRECT REPRESENTATIONS, MAKE REFERENCE TO THIS BROCHURE AND TO THE DOCUMENTS REQUIRED BY SECTION 718.503, FLORIDA STATUTES, TO BE FURNISHED BY A DEVELOPER TO A BUYER OR LESSEE.

These materials are not intended to be an offer to sell, or solicitation to buy a unit in the condominium. Such an offering shall only be made pursuant to the prospectus (offering circular) for the condominium and no statements should be relied upon unless made in the prospectus or in the applicable purchase agreement. In no event shall any solicitation, offer or sale of a unit in the condominium be made in, or to residents of, any state or country in which such activity would be unlawful. This is not an offer to sell nor a solicitation to purchase a condominium unit directed to any person where such an offer or solicitation is prohibited by law unless the condominium is registered if required or exempt. All prices, plans, specifications, features, amenities and other descriptions are preliminary and are subject to change without notice, as provided in your purchase agreement. Stated square footages and dimensions are measured to the exterior boundaries of the exterior walls and the centerline of interior demising walls and in fact vary from the square footage and dimensions that would be determined by using the description and definition of the "Unit" set forth in the Declaration (which generally only includes the interior airspace between the perimeter walls and excludes all interior structural components and other common elements). This method is generally used in sales materials and is provided to allow a prospective buyer to compare the Units with units in other condominium projects that utilize the same method. Measurements of rooms set forth on this floor plan are generally taken at the farthest points of each given room (as if the room were a perfect rectangle), without regard for any cutouts or variations. Accordingly, the area of the actual room will typically be smaller than the product obtained by multiplying the stated length and width. All dimensions are estimates which will vary with actual construction, and all floor plans, specifications and other development plans are subject to change and will not necessarily accurately reflect the final plans and specifications for the development. All depictions of appliances, counters, soffits, floor coverings and other matters of detail, including, with out limitation, items of finish and decoration, are conceptual only and are not necessarily included in each Unit.

L

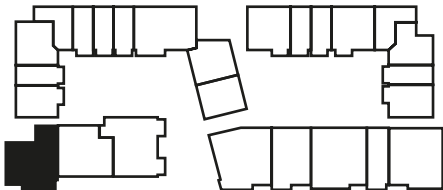
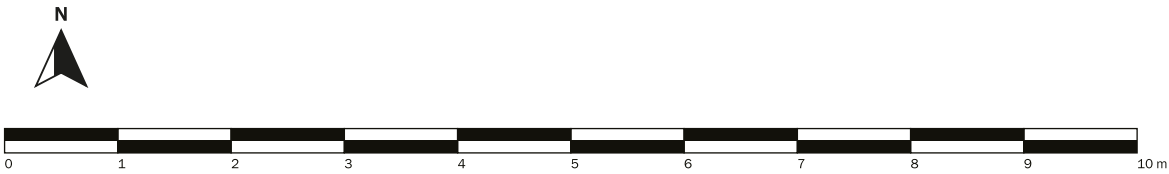
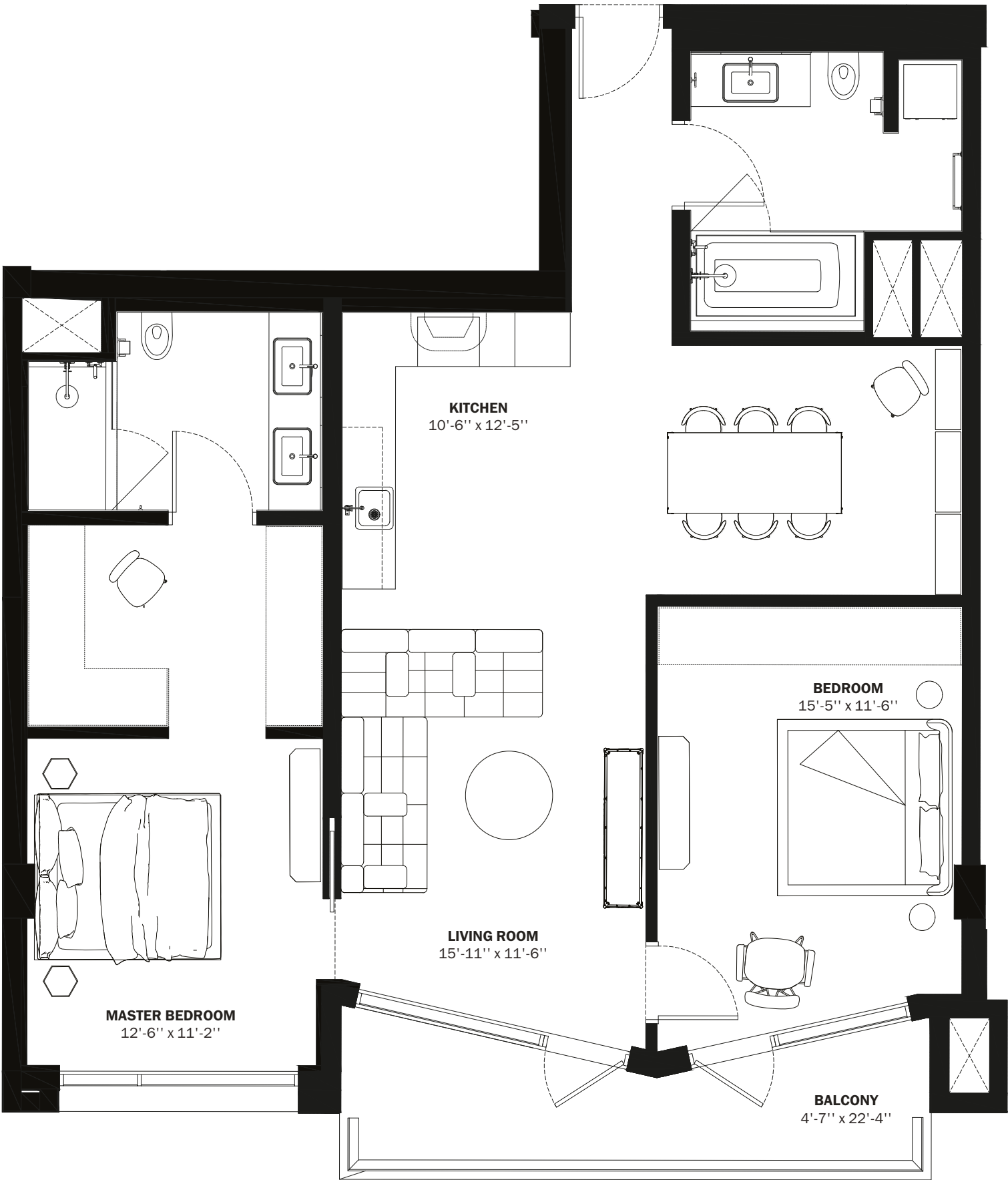
E1

INTERIORS AREA:1,211 SQ FT112.6 M²

TERRACE AREA:62 SQ FT5.8 M²

TOTAL RESIDENCE:1,273 SQ FT118.3 M²

ID 503 - 5TH LEVEL



28th STREET




BELINVEST
CREATING VALUE

ONE | **Sotheby's**
INTERNATIONAL REALTY

DIESEL HEADQUARTERS
VIA DELL'INDUSTRIA 4/6, BREGANZE (VI)
45°41'30.7" N 11°33'41.8" E

DIESEL WYNWOOD CONDOMINIUM
148 NW 28TH ST. MIAMI, FL 33127
25°48'10.0" N 80°11'53.1" W

RR:55
© COPYRIGHT DIESEL - IND 1978

 ORAL REPRESENTATIONS CANNOT BE RELIED UPON AS CORRECTLY STATING THE REPRESENTATIONS OF THE DEVELOPER. FOR CORRECT REPRESENTATIONS, MAKE REFERENCE TO THIS BROCHURE AND TO THE DOCUMENTS REQUIRED BY SECTION 718.503, FLORIDA STATUTES, TO BE FURNISHED BY A DEVELOPER TO A BUYER OR LESSEE.

These materials are not intended to be an offer to sell, or solicitation to buy a unit in the condominium. Such an offering shall only be made pursuant to the prospectus (offering circular) for the condominium and no statements should be relied upon unless made in the prospectus or in the applicable purchase agreement. In no event shall any solicitation, offer or sale of a unit in the condominium be made in, or to residents of, any state or country in which such activity would be unlawful. This is not an offer to sell nor a solicitation to purchase a condominium unit directed to any person where such an offer or solicitation is prohibited by law unless the condominium is registered if required or exempt. All prices, plans, specifications, features, amenities and other descriptions are preliminary and are subject to change without notice, as provided in your purchase agreement. Stated square footages and dimensions are measured to the exterior boundaries of the exterior walls and the centerline of interior demising walls and in fact vary from the square footage and dimensions that would be determined by using the description and definition of the "Unit" set forth in the Declaration (which generally only includes the interior airspace between the perimeter walls and excludes all interior structural components and other common elements). This method is generally used in sales materials and is provided to allow a prospective buyer to compare the Units with units in other condominium projects that utilize the same method. Measurements of rooms set forth on this floor plan are generally taken at the farthest points of each given room (as if the room were a perfect rectangle), without regard for any cutouts or variations. Accordingly, the area of the actual room will typically be smaller than the product obtained by multiplying the stated length and width. All dimensions are estimates which will vary with actual construction, and all floor plans, specifications and other development plans are subject to change and will not necessarily accurately reflect the final plans and specifications for the development. All depictions of appliances, counters, soffits, floor coverings and other matters of detail, including, with out limitation, items of finish and decoration, are conceptual only and are not necessarily included in each Unit.

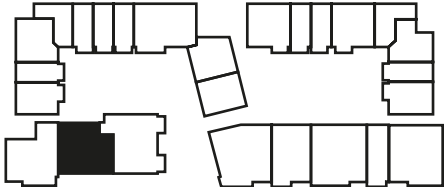
L

E2

INTERIORS AREA:1,120 SQ FT113.4 M²

TOTAL RESIDENCE:1,120 SQ FT113.4 M²

ID 302 - 3RD LEVEL



28th STREET




BELINVEST
CREATING VALUE

ONE | **Sotheby's**
INTERNATIONAL REALTY

DIESEL HEADQUARTERS
VIA DELL'INDUSTRIA 4/6, BREGANZE (VI)
45°41'30.7" N 11°33'41.8" E
DIESEL WYNWOOD CONDOMINIUM
148 NW 28TH ST. MIAMI, FL 33127
25°48'10.0" N 80°11'53.1" W

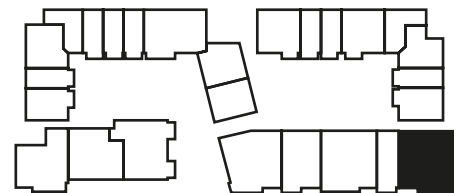
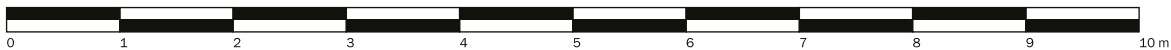
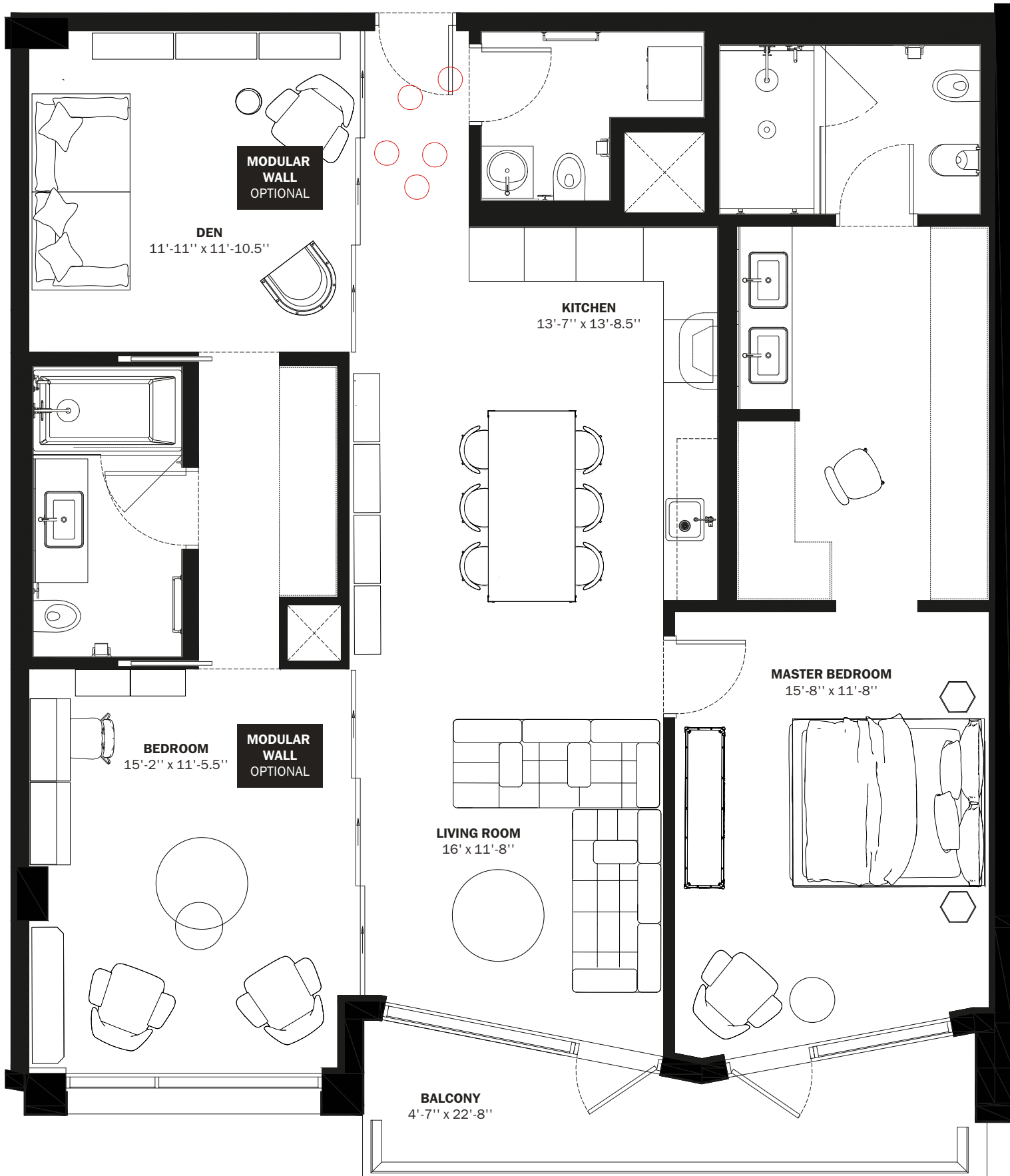
RR:55
© COPYRIGHT DIESEL - IND 1978

 ORAL REPRESENTATIONS CANNOT BE RELIED UPON AS CORRECTLY STATING THE REPRESENTATIONS OF THE DEVELOPER. FOR CORRECT REPRESENTATIONS, MAKE REFERENCE TO THIS BROCHURE AND TO THE DOCUMENTS REQUIRED BY SECTION 718.503, FLORIDA STATUTES, TO BE FURNISHED BY A DEVELOPER TO A BUYER OR LESSEE.

These materials are not intended to be an offer to sell, or solicitation to buy a unit in the condominium. Such an offering shall only be made pursuant to the prospectus (offering circular) for the condominium and no statements should be relied upon unless made in the prospectus or in the applicable purchase agreement. In no event shall any solicitation, offer or sale of a unit in the condominium be made in, or to residents of, any state or country in which such activity would be unlawful. This is not an offer to sell nor a solicitation to purchase a condominium unit directed to any person where such an offer or solicitation is prohibited by law unless the condominium is registered if required or exempt. All prices, plans, specifications, features, amenities and other descriptions are preliminary and are subject to change without notice, as provided in your purchase agreement. Stated square footages and dimensions are measured to the exterior boundaries of the exterior walls and the centerline of interior demising walls and in fact vary from the square footage and dimensions that would be determined by using the description and definition of the "Unit" set forth in the Declaration (which generally only includes the interior airspace between the perimeter walls and excludes all interior structural components and other common elements). This method is generally used in sales materials and is provided to allow a prospective buyer to compare the Units with units in other condominium projects that utilize the same method. Measurements of rooms set forth on this floor plan are generally taken at the farthest points of each given room (as if the room were a perfect rectangle), without regard for any cutouts or variations. Accordingly, the area of the actual room will typically be smaller than the product obtained by multiplying the stated length and width. All dimensions are estimates which will vary with actual construction, and all floor plans, specifications and other development plans are subject to change and will not necessarily accurately reflect the final plans and specifications for the development. All depictions of appliances, counters, soffits, floor coverings and other matters of detail, including, with out limitation, items of finish and decoration, are conceptual only and are not necessarily included in each Unit.

E3

INTERIORS AREA:	1,437 SQ FT	133.6 M ²
TERRACE AREA:	74 SQ FT	6.9 M ²
TOTAL RESIDENCE:	1,511 SQ FT	140.4 M ²
ID 320 - 3 RD LEVEL		



28th STREET




BELINVEST
CREATING VALUE

ONE | Sotheby's
INTERNATIONAL REALTY

DIESEL HEADQUARTERS
VIA DELL'INDUSTRIA 4/6, BREGANZE (VI)
45°41'30.7" N 11°33'41.8" E

DIESEL WYNWOOD CONDOMINIUM
148 NW 28TH ST. MIAMI, FL 33127
25°48'10.0" N 80°11'53.1" W

RR:55
© COPYRIGHT DIESEL - IND 1978

 ORAL REPRESENTATIONS CANNOT BE RELIED UPON AS CORRECTLY STATING THE REPRESENTATIONS OF THE DEVELOPER. FOR CORRECT REPRESENTATIONS, MAKE REFERENCE TO THIS BROCHURE AND TO THE DOCUMENTS REQUIRED BY SECTION 718.503, FLORIDA STATUTES, TO BE FURNISHED BY A DEVELOPER TO A BUYER OR LESSEE.

These materials are not intended to be an offer to sell, or solicitation to buy a unit in the condominium. Such an offering shall only be made pursuant to the prospectus (offering circular) for the condominium and no statements should be relied upon unless made in the prospectus or in the applicable purchase agreement. In no event shall any solicitation, offer or sale of a unit in the condominium be made in, or to residents of, any state or country in which such activity would be unlawful. This is not an offer to sell nor a solicitation to purchase a condominium unit directed to any person where such an offer or solicitation is prohibited by law unless the condominium is registered if required or exempt. All prices, plans, specifications, features, amenities and other descriptions are preliminary and are subject to change without notice, as provided in your purchase agreement. Stated square footages and dimensions are measured to the exterior boundaries of the exterior walls and the centerline of interior demising walls and in fact vary from the square footage and dimensions that would be determined by using the description and definition of the "Unit" set forth in the Declaration (which generally only includes the interior airspace between the perimeter walls and excludes all interior structural components and other common elements). This method is generally used in sales materials and is provided to allow a prospective buyer to compare the Units with units in other condominium projects that utilize the same method. Measurements of rooms set forth on this floor plan are generally taken at the farthest points of each given room (as if the room were a perfect rectangle), without regard for any cutouts or variations. Accordingly, the area of the actual room will typically be smaller than the product obtained by multiplying the stated length and width. All dimensions are estimates which will vary with actual construction, and all floor plans, specifications and other development plans are subject to change and will not necessarily accurately reflect the final plans and specifications for the development. All depictions of appliances, counters, soffits, floor coverings and other matters of detail, including, with out limitation, items of finish and decoration, are conceptual only and are not necessarily included in each Unit.

L

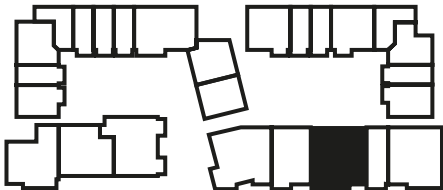
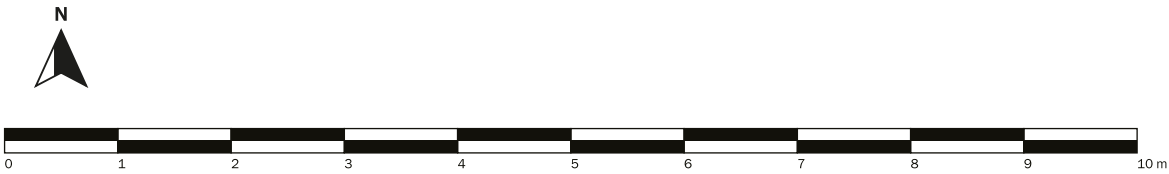
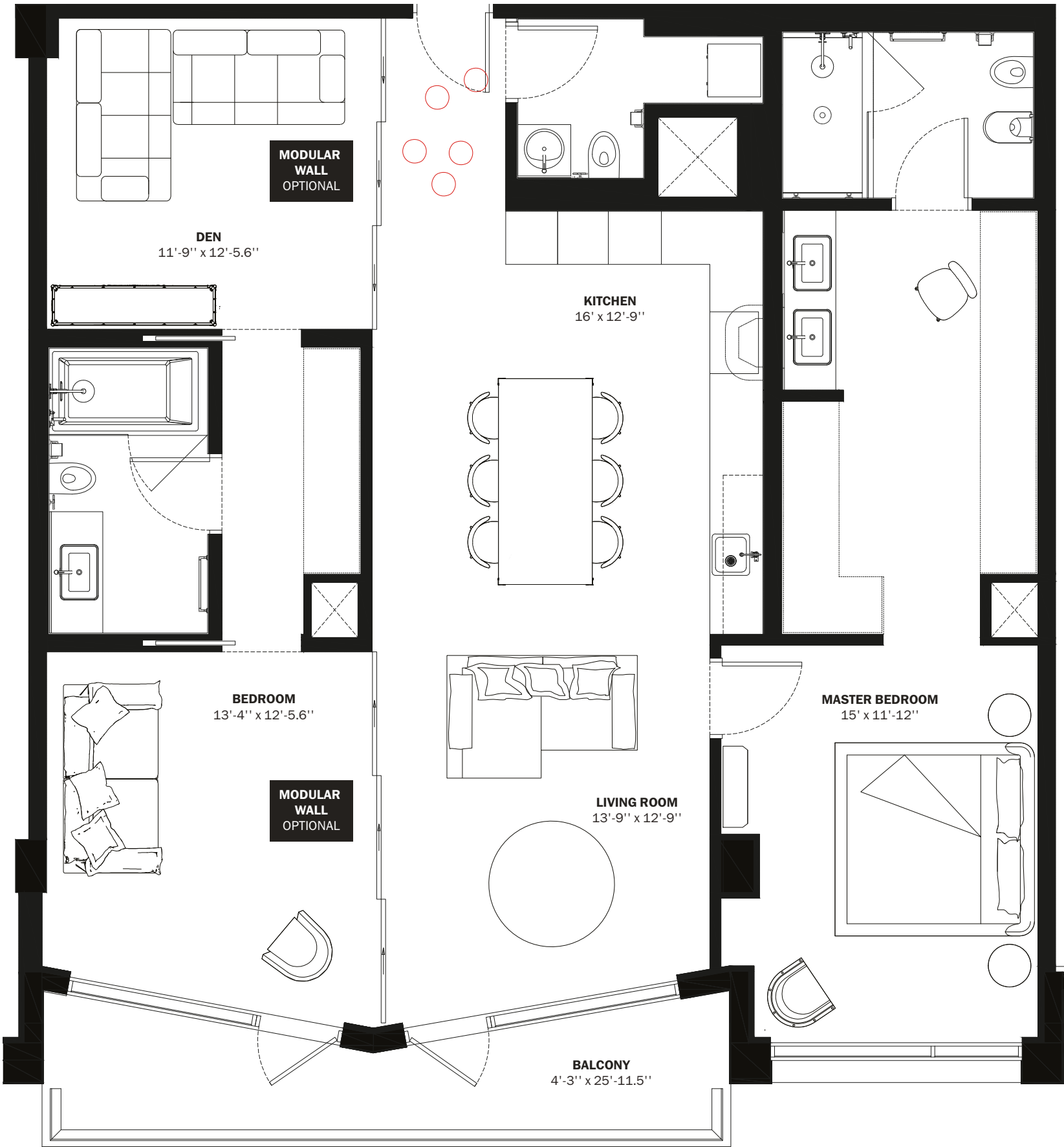
E4

INTERIORS AREA:1,486 SQ FT138.1 M²

TERRACE AREA:152 SQ FT14.2 M²

TOTAL RESIDENCE:1,638 SQ FT152.2 M²

ID 622 - 6TH LEVEL



28th STREET




BELINVEST
CREATING VALUE

ONE | Sotheby's
INTERNATIONAL REALTY

DIESEL HEADQUARTERS
VIA DELL'INDUSTRIA 4/6, BREGANZE (VI)
45°41'30.7" N 11°33'41.8" E

DIESEL WYNWOOD CONDOMINIUM
148 NW 28TH ST. MIAMI, FL 33127
25°48'10.0" N 80°11'53.1" W

RR:55
© COPYRIGHT DIESEL - IND 1978

 ORAL REPRESENTATIONS CANNOT BE RELIED UPON AS CORRECTLY STATING THE REPRESENTATIONS OF THE DEVELOPER. FOR CORRECT REPRESENTATIONS, MAKE REFERENCE TO THIS BROCHURE AND TO THE DOCUMENTS REQUIRED BY SECTION 718.503, FLORIDA STATUTES, TO BE FURNISHED BY A DEVELOPER TO A BUYER OR LESSEE.

These materials are not intended to be an offer to sell, or solicitation to buy a unit in the condominium. Such an offering shall only be made pursuant to the prospectus (offering circular) for the condominium and no statements should be relied upon unless made in the prospectus or in the applicable purchase agreement. In no event shall any solicitation, offer or sale of a unit in the condominium be made in, or to residents of, any state or country in which such activity would be unlawful. This is not an offer to sell nor a solicitation to purchase a condominium unit directed to any person where such an offer or solicitation is prohibited by law unless the condominium is registered if required or exempt. All prices, plans, specifications, features, amenities and other descriptions are preliminary and are subject to change without notice, as provided in your purchase agreement. Stated square footages and dimensions are measured to the exterior boundaries of the exterior walls and the centerline of interior demising walls and in fact vary from the square footage and dimensions that would be determined by using the description and definition of the "Unit" set forth in the Declaration (which generally only includes the interior airspace between the perimeter walls and excludes all interior structural components and other common elements). This method is generally used in sales materials and is provided to allow a prospective buyer to compare the Units with units in other condominium projects that utilize the same method. Measurements of rooms set forth on this floor plan are generally taken at the farthest points of each given room (as if the room were a perfect rectangle), without regard for any cutouts or variations. Accordingly, the area of the actual room will typically be smaller than the product obtained by multiplying the stated length and width. All dimensions are estimates which will vary with actual construction, and all floor plans, specifications and other development plans are subject to change and will not necessarily accurately reflect the final plans and specifications for the development. All depictions of appliances, counters, soffits, floor coverings and other matters of detail, including, with out limitation, items of finish and decoration, are conceptual only and are not necessarily included in each Unit.

L

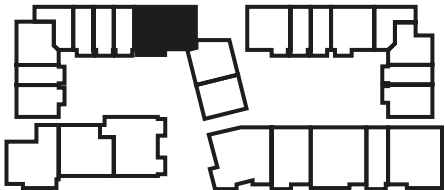
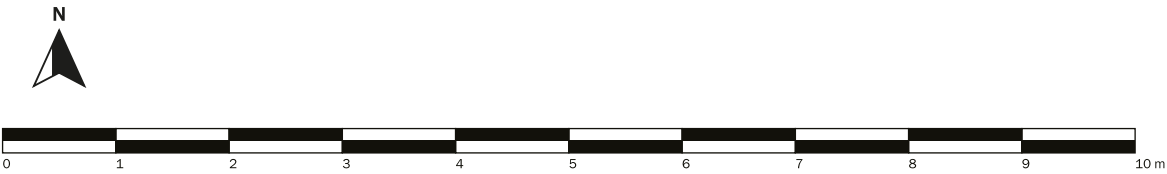
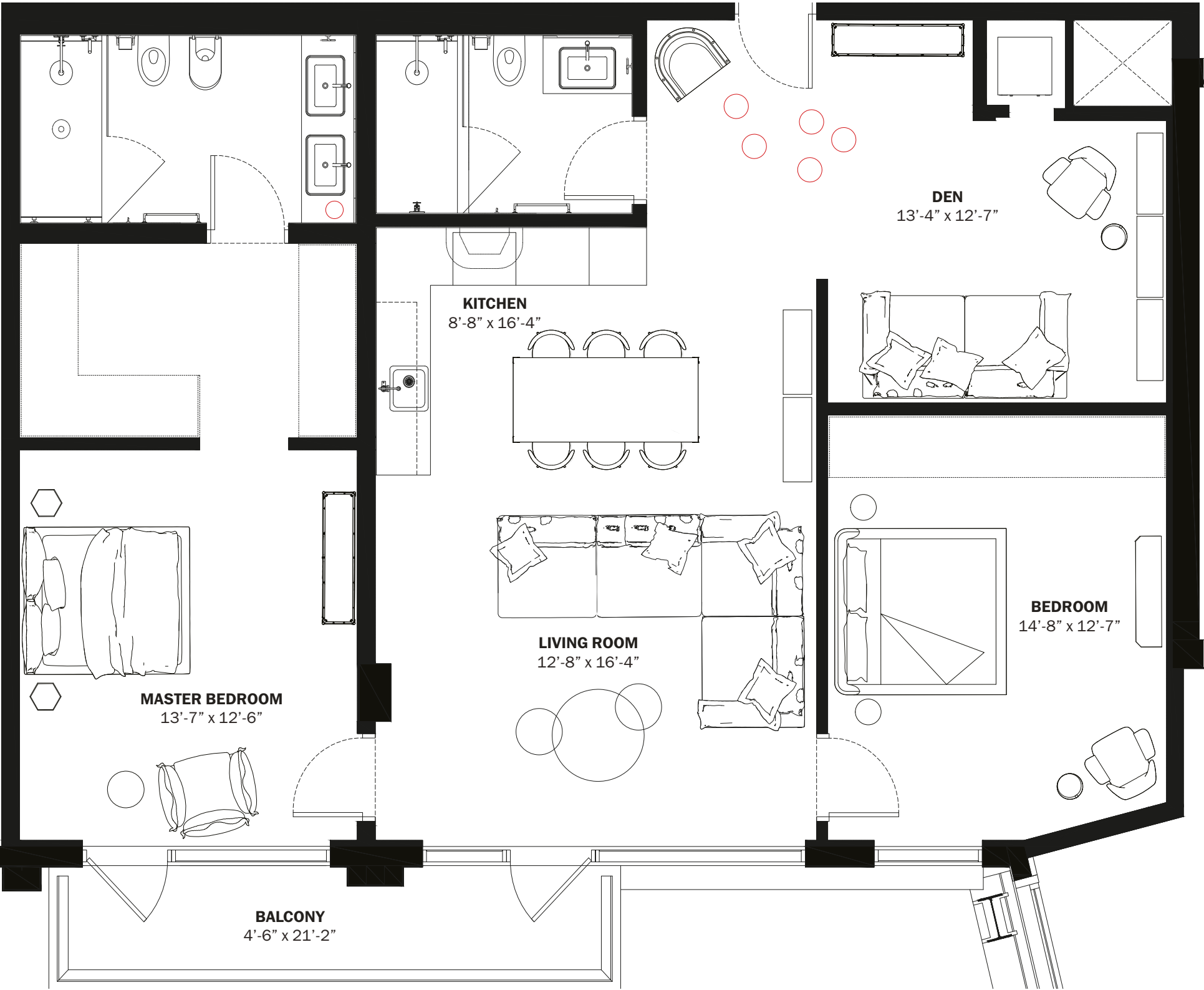
E5

INTERIORS AREA:1,295 SQ FT120.4 M²

TERRACE AREA:113 SQ FT10.5 M²

TOTAL RESIDENCE:1,408 SQ FT130.9 M²

ID 411 - 4TH LEVEL



28th STREET




BELINVEST
CREATING VALUE

ONE | Sotheby's
INTERNATIONAL REALTY

DIESEL HEADQUARTERS
VIA DELL'INDUSTRIA 4/6, BREGANZE (VI)
45°41'30.7" N 11°33'41.8" E

DIESEL WYNWOOD CONDOMINIUM
148 NW 28TH ST. MIAMI, FL 33127
25°48'10.0" N 80°11'53.1" W

RR:55
© COPYRIGHT DIESEL - IND 1978

 ORAL REPRESENTATIONS CANNOT BE RELIED UPON AS CORRECTLY STATING THE REPRESENTATIONS OF THE DEVELOPER. FOR CORRECT REPRESENTATIONS, MAKE REFERENCE TO THIS BROCHURE AND TO THE DOCUMENTS REQUIRED BY SECTION 718.503, FLORIDA STATUTES, TO BE FURNISHED BY A DEVELOPER TO A BUYER OR LESSEE.

These materials are not intended to be an offer to sell, or solicitation to buy a unit in the condominium. Such an offering shall only be made pursuant to the prospectus (offering circular) for the condominium and no statements should be relied upon unless made in the prospectus or in the applicable purchase agreement. In no event shall any solicitation, offer or sale of a unit in the condominium be made in, or to residents of, any state or country in which such activity would be unlawful. This is not an offer to sell nor a solicitation to purchase a condominium unit directed to any person where such an offer or solicitation is prohibited by law unless the condominium is registered if required or exempt. All prices, plans, specifications, features, amenities and other descriptions are preliminary and are subject to change without notice, as provided in your purchase agreement. Stated square footages and dimensions are measured to the exterior boundaries of the exterior walls and the centerline of interior demising walls and in fact vary from the square footage and dimensions that would be determined by using the description and definition of the "Unit" set forth in the Declaration (which generally only includes the interior airspace between the perimeter walls and excludes all interior structural components and other common elements). This method is generally used in sales materials and is provided to allow a prospective buyer to compare the Units with units in other condominium projects that utilize the same method. Measurements of rooms set forth on this floor plan are generally taken at the farthest points of each given room (as if the room were a perfect rectangle), without regard for any cutouts or variations. Accordingly, the area of the actual room will typically be smaller than the product obtained by multiplying the stated length and width. All dimensions are estimates which will vary with actual construction, and all floor plans, specifications and other development plans are subject to change and will not necessarily accurately reflect the final plans and specifications for the development. All depictions of appliances, counters, soffits, floor coverings and other matters of detail, including, with out limitation, items of finish and decoration, are conceptual only and are not necessarily included in each Unit.