

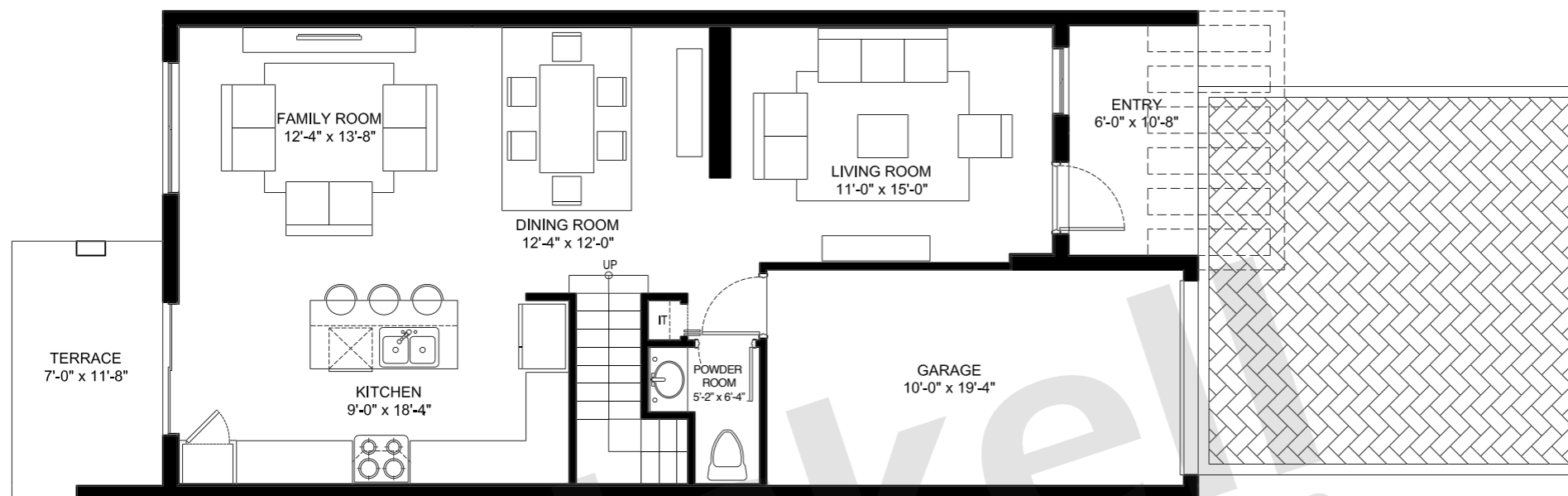


# NEOVITA

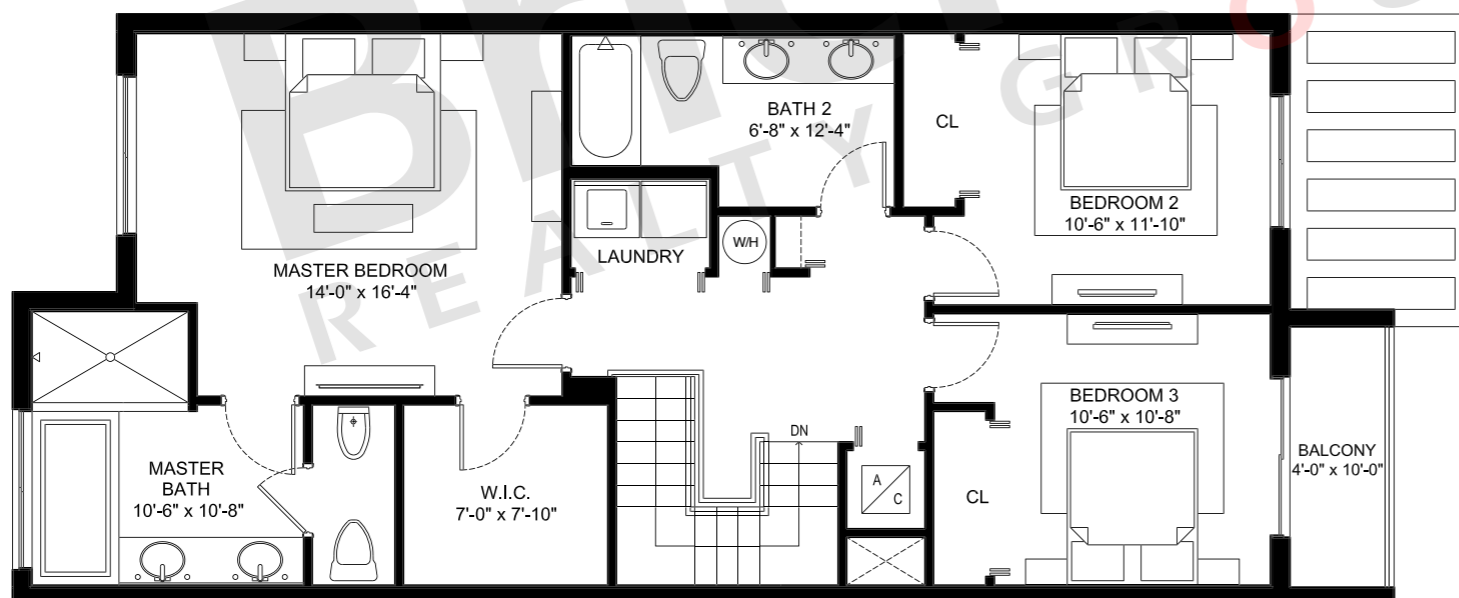
D O R A L

## Townhomes Unit A

2-Story · 3 Bedrooms · 2.5 Baths  
Living · Dining-Family-Kitchen  
2<sup>nd</sup> Floor Laundry Room · Garage



FIRST FLOOR



SECOND FLOOR

	SQ FT	M <sup>2</sup>
A/C	1,816	168.7
Garage	211	19.6
Terrace	82	7.6
Balconies	44	4.1
Entry	66	6.1
<b>Total</b>	<b>2,219</b>	<b>206.1</b>

## Brickell REALTY GROUP

2071 NW 112th Avenue, Miami, FL 33172

[www.brickell-realty.com/Neovita.html](http://www.brickell-realty.com/Neovita.html)

Oral representation cannot be relied upon as correctly stating representations of the developer. Pictures of homes and condos may not reflect the final products which may vary. Dimensions, specifications, improvements, rendering, plans, land uses, materials, amenities, prices, and availability are subject to change at the developer's discretion without notice.

Stated dimensions are approximate and measured to the exterior boundaries of the exterior walls and the centerline of interior demising walls which in fact vary from the dimensions that would be determined by using the description and definition of the "Unit" set forth in the Declaration (which generally only includes the interior airspace between the perimeter walls and excludes interior structural components).

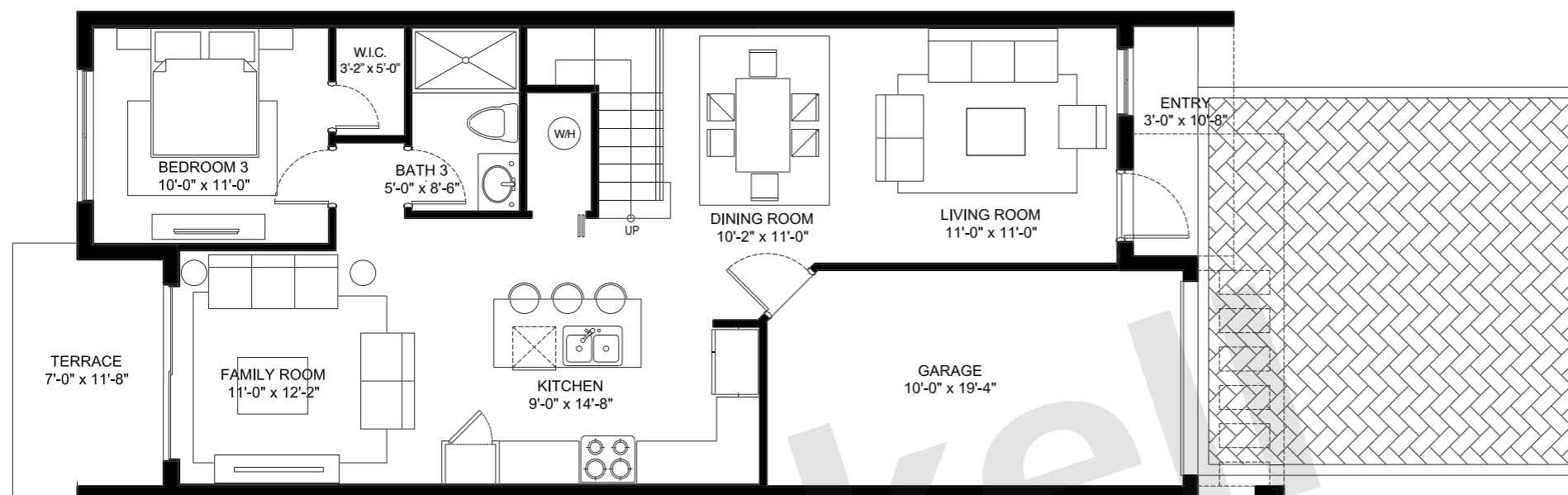


# NEOVITA

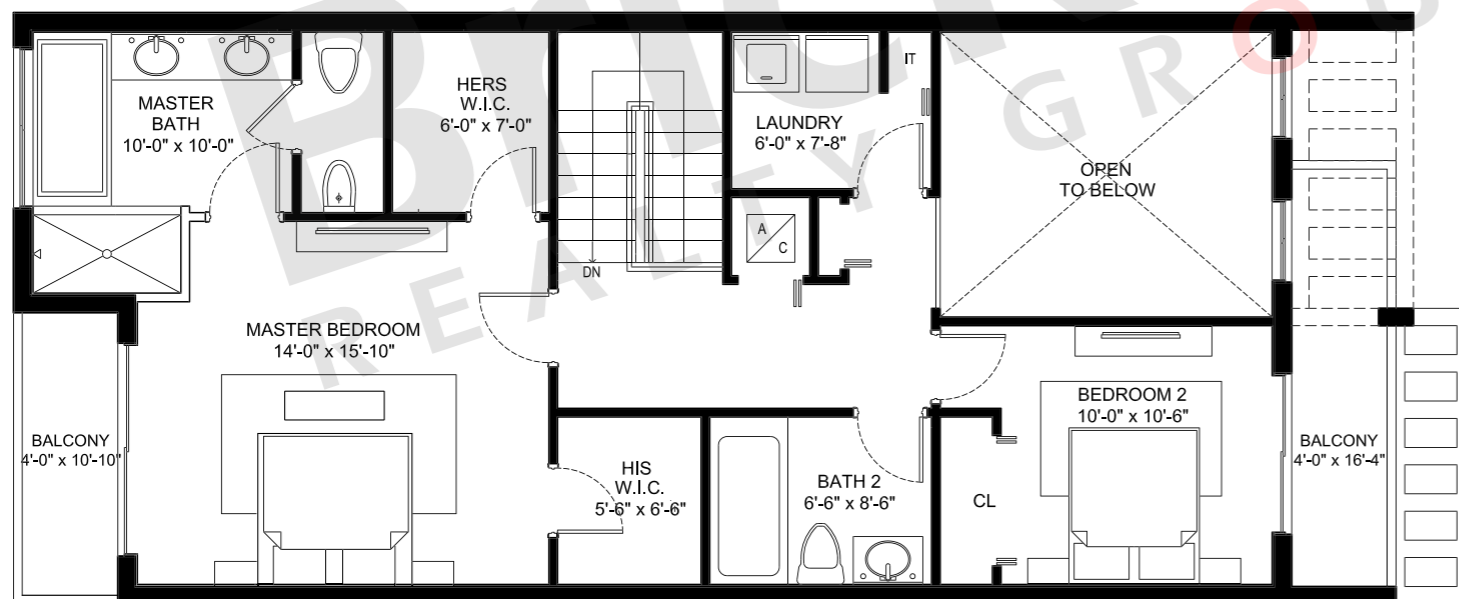
D O R A L

## Townhomes Unit B1

2-Story · 3 Bedrooms · 3 Baths  
Living-Dining · Family-Kitchen  
2<sup>nd</sup> Floor Laundry Room · Garage



FIRST FLOOR



SECOND FLOOR

	SQ FT	M <sup>2</sup>
A/C	1,743	161.9
Garage	206	19.1
Terrace	78	7.2
Balconies	110	10.2
Entry	33	3.1
<b>Total</b>	<b>2,170</b>	<b>201.6</b>

## Brickell REALTY GROUP

2071 NW 112th Avenue, Miami, FL 33172

[www.brickell-realty.com/Neovita.html](http://www.brickell-realty.com/Neovita.html)

Oral representation cannot be relied upon as correctly stating representations of the developer. Pictures of homes and condos may not reflect the final products which may vary. Dimensions, specifications, improvements, rendering, plans, land uses, materials, amenities, prices, and availability are subject to change at the developer's discretion without notice.

Stated dimensions are approximate and measured to the exterior boundaries of the exterior walls and the centerline of interior demising walls which in fact vary from the dimensions that would be determined by using the description and definition of the "Unit" set forth in the Declaration (which generally only includes the interior airspace between the perimeter walls and excludes interior structural components).

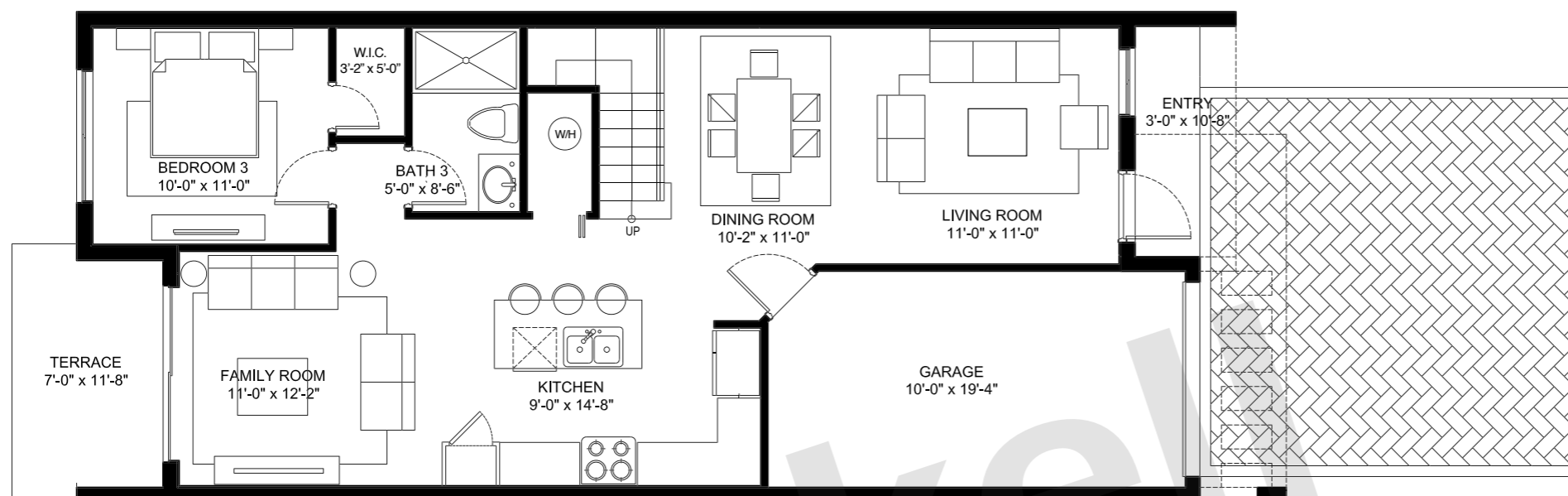


# NEOVITA

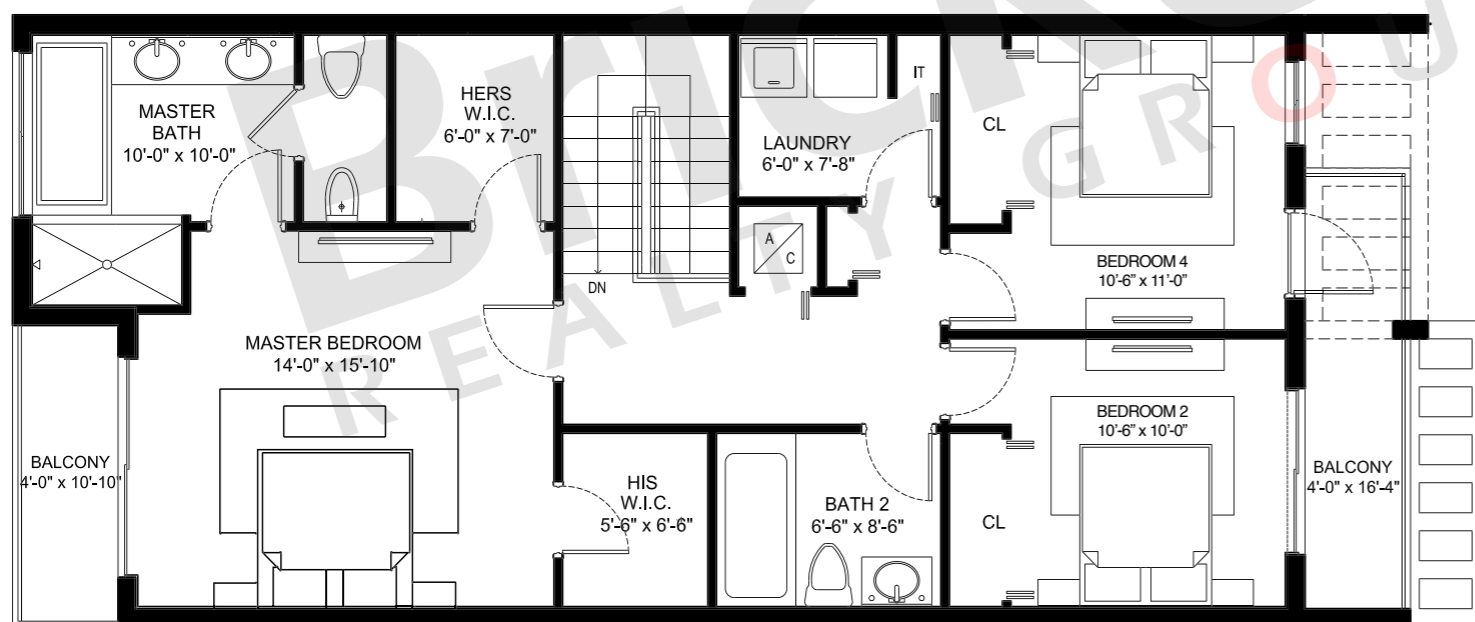
D O R A L

## Townhomes Unit B2

2-Story · 4 Bedrooms · 3 Baths  
Living-Dining · Family-Kitchen  
2<sup>nd</sup> Floor Laundry Room · Garage



FIRST FLOOR



SECOND FLOOR

	SQ FT	M <sup>2</sup>
A/C	1,895	176.0
Garage	206	19.1
Terrace	78	7.2
Balconies	110	10.2
Entry	33	3.1
<b>Total</b>	<b>2,322</b>	<b>215.7</b>

## Brickell REALTY GROUP

2071 NW 112th Avenue, Miami, FL 33172

[www.brickell-realty.com/Neovita.html](http://www.brickell-realty.com/Neovita.html)

Oral representation cannot be relied upon as correctly stating representations of the developer. Pictures of homes and condos may not reflect the final products which may vary. Dimensions, specifications, improvements, rendering, plans, land uses, materials, amenities, prices, and availability are subject to change at the developer's discretion without notice.

Stated dimensions are approximate and measured to the exterior boundaries of the exterior walls and the centerline of interior demising walls which in fact vary from the dimensions that would be determined by using the description and definition of the "Unit" set forth in the Declaration (which generally only includes the interior airspace between the perimeter walls and excludes interior structural components).

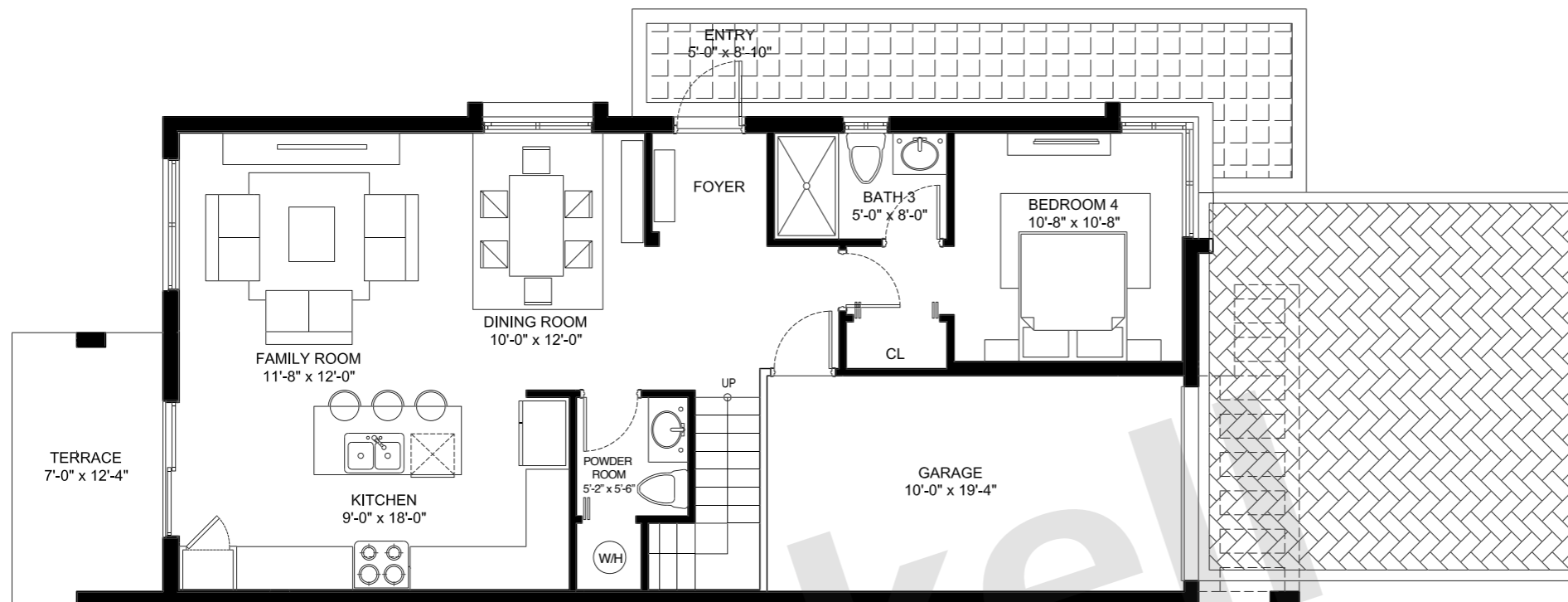


# NEOVITA

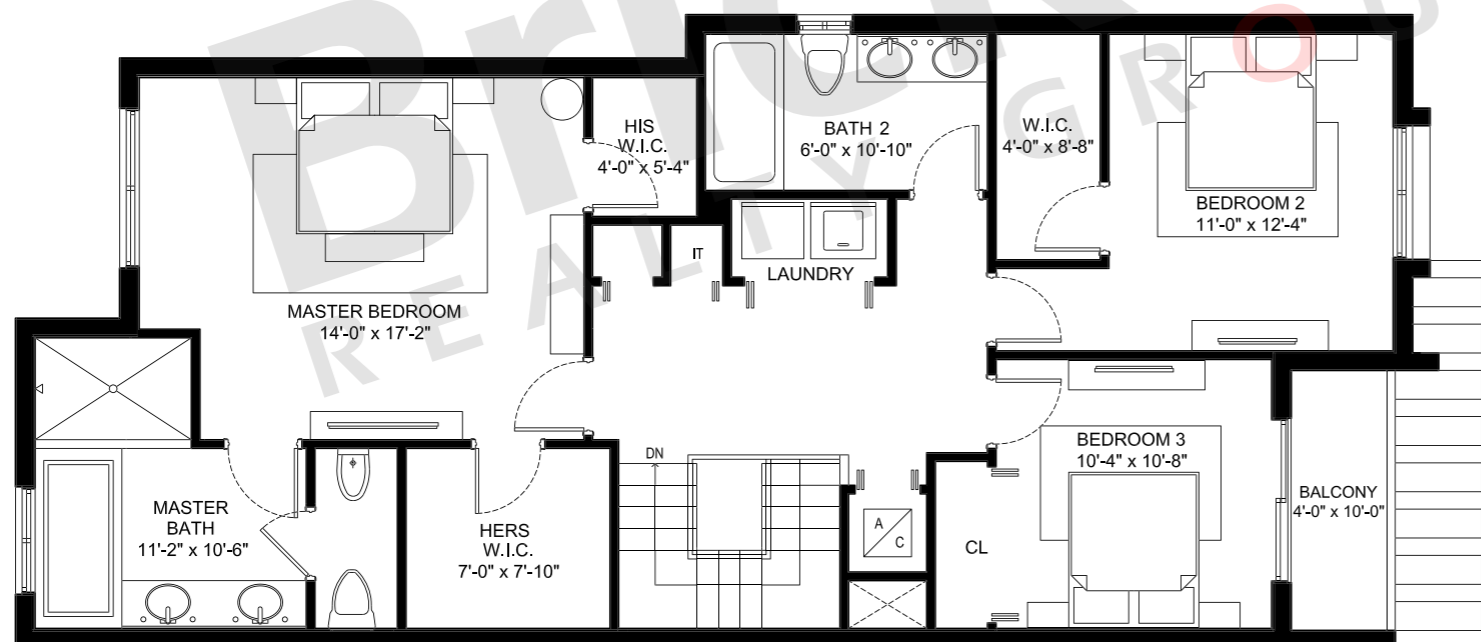
D O R A L

## Townhomes Unit C

2-Story · 4 Bedrooms · 3.5 Baths  
Dining-Family-Kitchen  
2<sup>nd</sup> Floor Laundry Room · Garage



FIRST FLOOR



SECOND FLOOR

	SQ FT	M <sup>2</sup>
A/C	2,021	187.8
Garage	207	19.2
Terrace	86	8.0
Balconies	41	3.8
Entry	44	4.1
<b>Total</b>	<b>2,399</b>	<b>222.9</b>

## Brickell REALTY GROUP

2071 NW 112th Avenue, Miami, FL 33172

[www.brickell-realty.com/Neovita.html](http://www.brickell-realty.com/Neovita.html)

Oral representation cannot be relied upon as correctly stating representations of the developer. Pictures of homes and condos may not reflect the final products which may vary. Dimensions, specifications, improvements, rendering, plans, land uses, materials, amenities, prices, and availability are subject to change at the developer's discretion without notice.

Stated dimensions are approximate and measured to the exterior boundaries of the exterior walls and the centerline of interior demising walls which in fact vary from the dimensions that would be determined by using the description and definition of the "Unit" set forth in the Declaration (which generally only includes the interior airspace between the perimeter walls and excludes interior structural components).

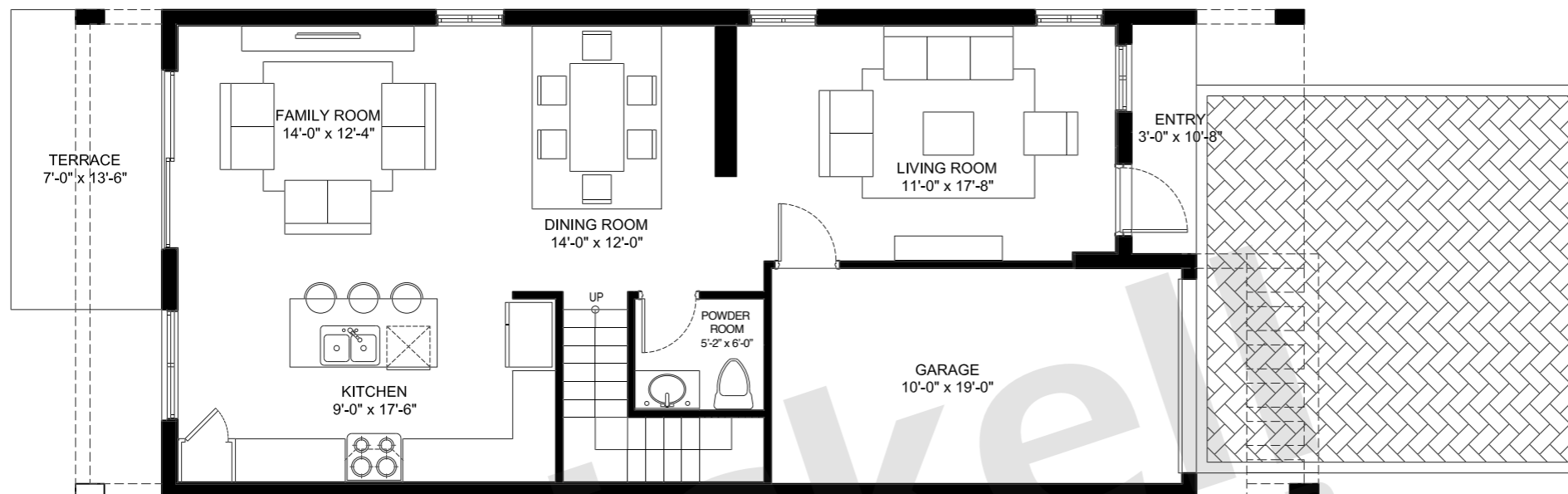


# NEOVITA

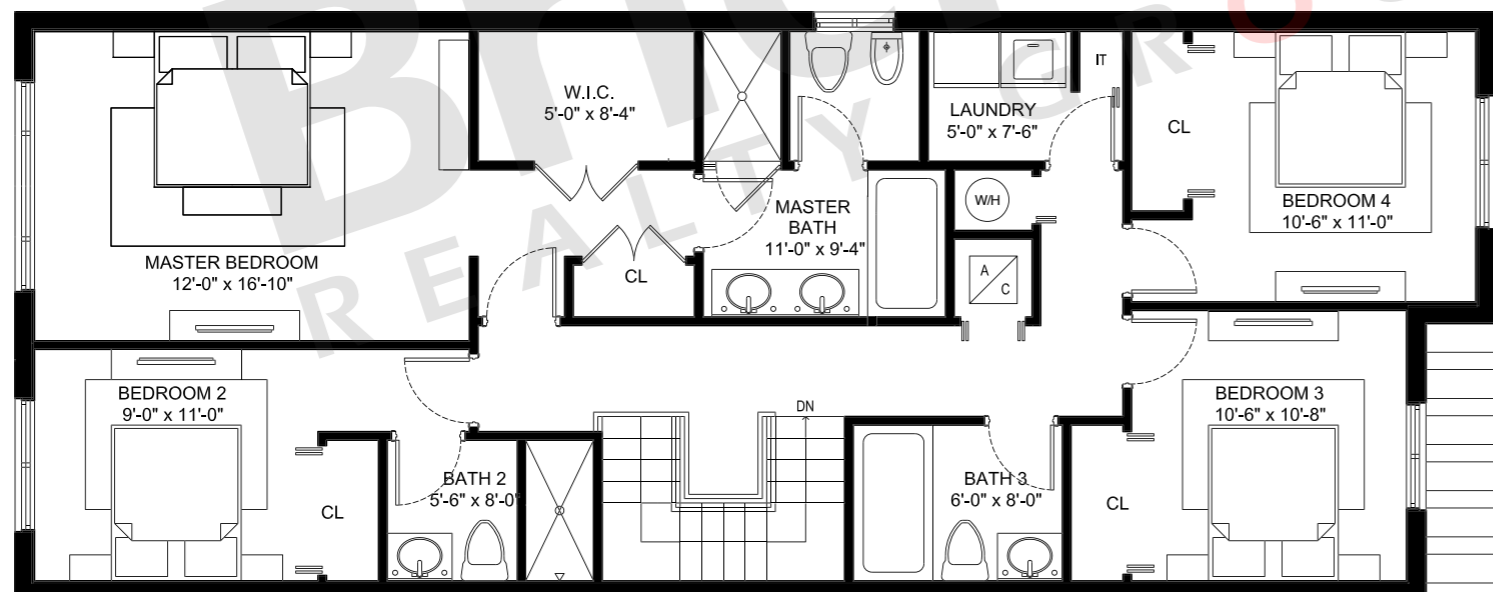
D O R A L

## Townhomes Unit D

2-Story · 4 Bedrooms · 3.5 Baths  
Living · Dining-Family-Kitchen  
2<sup>nd</sup> Floor Laundry Room · Garage



FIRST FLOOR



SECOND FLOOR

	SQ FT	M <sup>2</sup>
A/C	2,043	189.8
Garage	206	19.1
Terrace	95	8.8
Balconies	0	0.0
Entry	33	3.1
<b>Total</b>	<b>2,377</b>	<b>220.8</b>

## Brickell REALTY GROUP

2071 NW 112th Avenue, Miami, FL 33172

[www.brickell-realty.com/Neovita.html](http://www.brickell-realty.com/Neovita.html)

Oral representation cannot be relied upon as correctly stating representations of the developer. Pictures of homes and condos may not reflect the final products which may vary. Dimensions, specifications, improvements, rendering, plans, land uses, materials, amenities, prices, and availability are subject to change at the developer's discretion without notice.

Stated dimensions are approximate and measured to the exterior boundaries of the exterior walls and the centerline of interior demising walls which in fact vary from the dimensions that would be determined by using the description and definition of the "Unit" set forth in the Declaration (which generally only includes the interior airspace between the perimeter walls and excludes interior structural components).