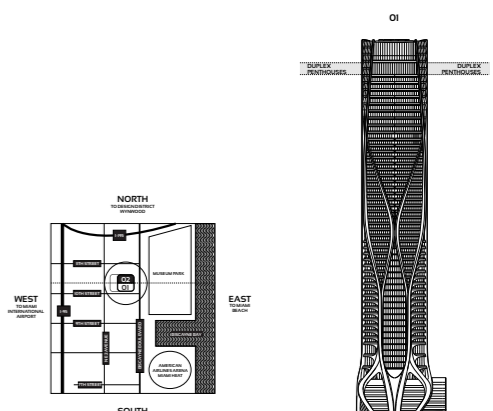
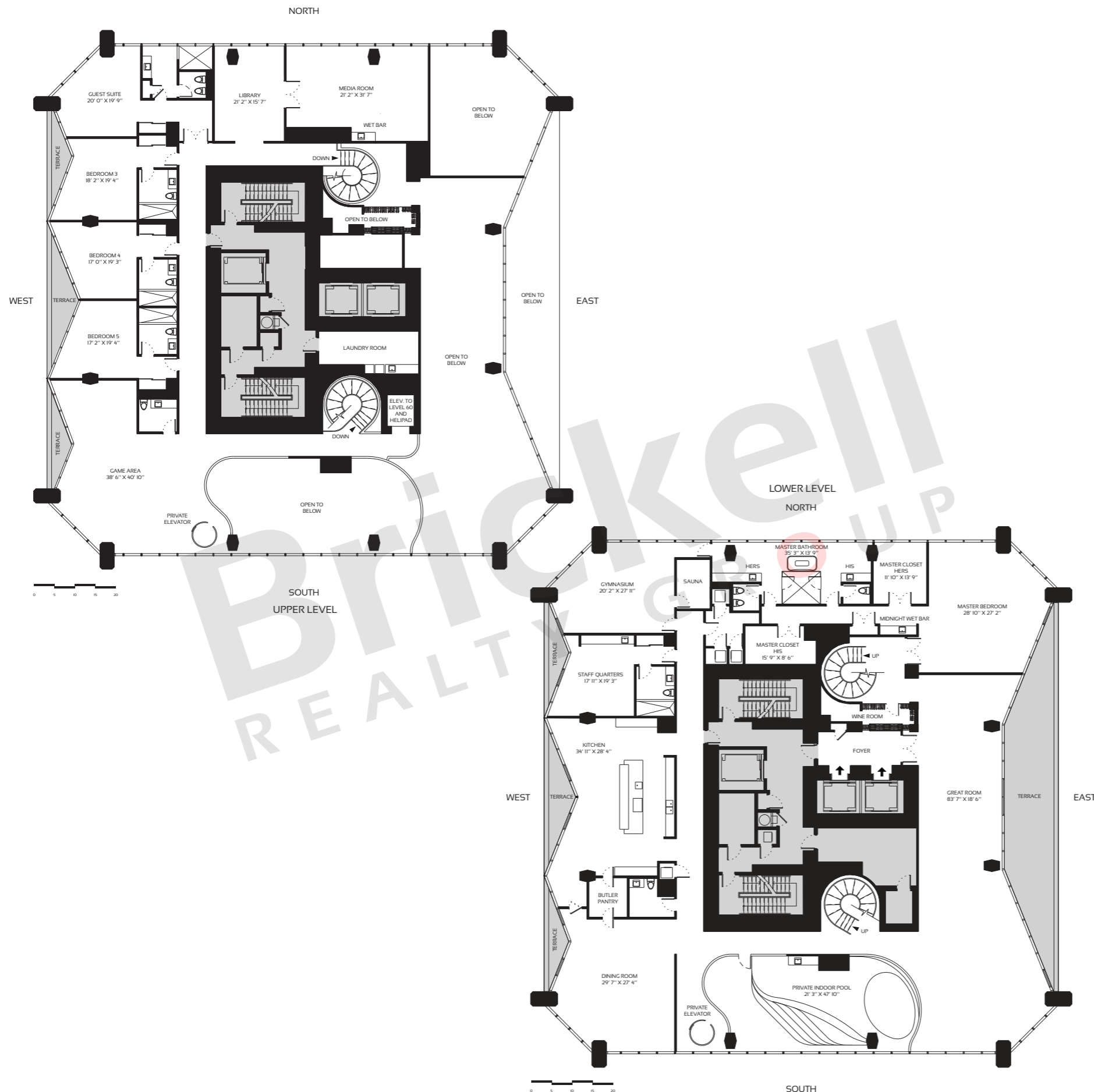


DUPLEX PENTHOUSE

5801 - Levels 58-59

6 Bedrooms · 6 Baths · 2 Half Baths

	SQ FT	M <sup>2</sup>
Interior, L58	9,800	910.4
Interior, L59	5,400	501.7
<b>Interior, Total</b>	<b>15,200</b>	<b>1,412.1</b>
Terrace, L58	1,000	92.9
Terrace, L59	270	25.1
<b>Terrace, Total</b>	<b>1,270</b>	<b>117.0</b>
<b>Total</b>	<b>16,470</b>	<b>1,530.1</b>



**Brickell**  
REALTY GROUP

2071 NW 112th Avenue, Miami, FL 33172

[www.brickell-realty.com/1000Museum.html](http://www.brickell-realty.com/1000Museum.html)

Oral representation cannot be relied upon as correctly stating representations of the developer. Renderings of residences may not reflect the final products. Dimensions, specifications, improvements, rendering, plans, land uses, materials, amenities, prices, and availability are subject to change at the developer's discretion without notice.

Stated dimensions are approximate and measured to the exterior boundaries of the exterior walls and the centerline of interior demising walls which in fact vary from the dimensions that would be determined by using the description and definition of the "Unit" set forth in the Declaration which generally only includes the interior airspace between the perimeter walls (measuring from interior wall plane to interior wall plane) and excludes interior structural components.

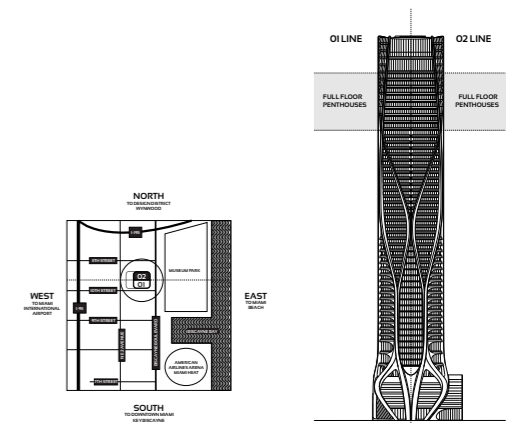
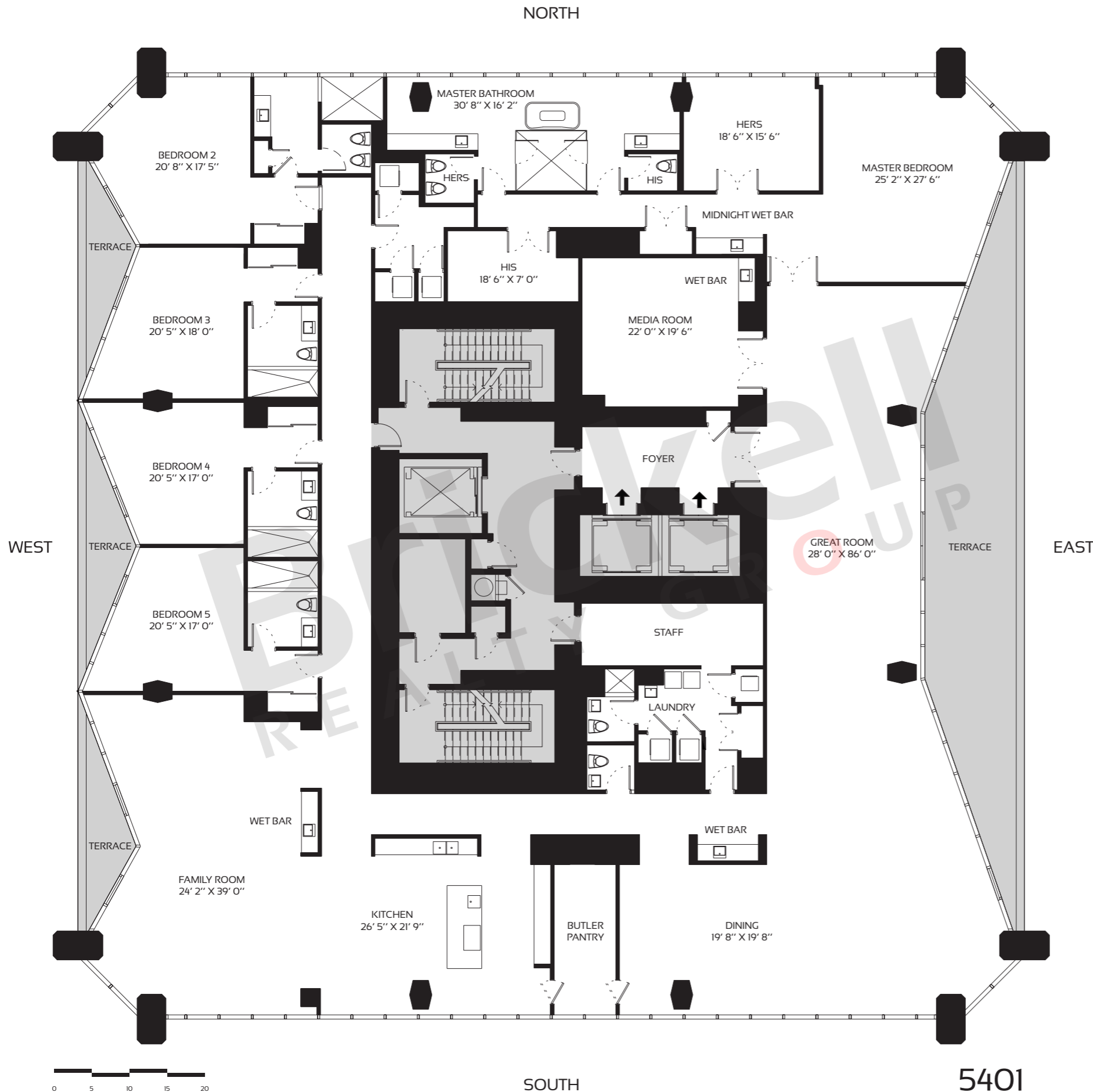
For your reference, the square footage area of the Unit, determined in accordance with those Unit boundaries as defined in the Declaration. Note that measurements of rooms set forth on this floor plan are generally taken at the greatest points of each given room (as if the room were a perfect rectangle), without regard for any cutouts. Accordingly, the area of the actual room will typically be smaller than the product obtained by multiplying the stated length times width.

**FULL-FLOOR PENTHOUSE**

Zone 4 - Levels 50-57

5 Bedrooms · 6.5 Baths

	SQ FT	M <sup>2</sup>
Interior	9,910	920.6
Terrace	1,210	112.4
<b>Total</b>	<b>11,126</b>	<b>1,033.6</b>



**Brickell**  
REALTY GROUP

2071 NW 112th Avenue, Miami, FL 33172

[www.brickell-realty.com/1000Museum.html](http://www.brickell-realty.com/1000Museum.html)

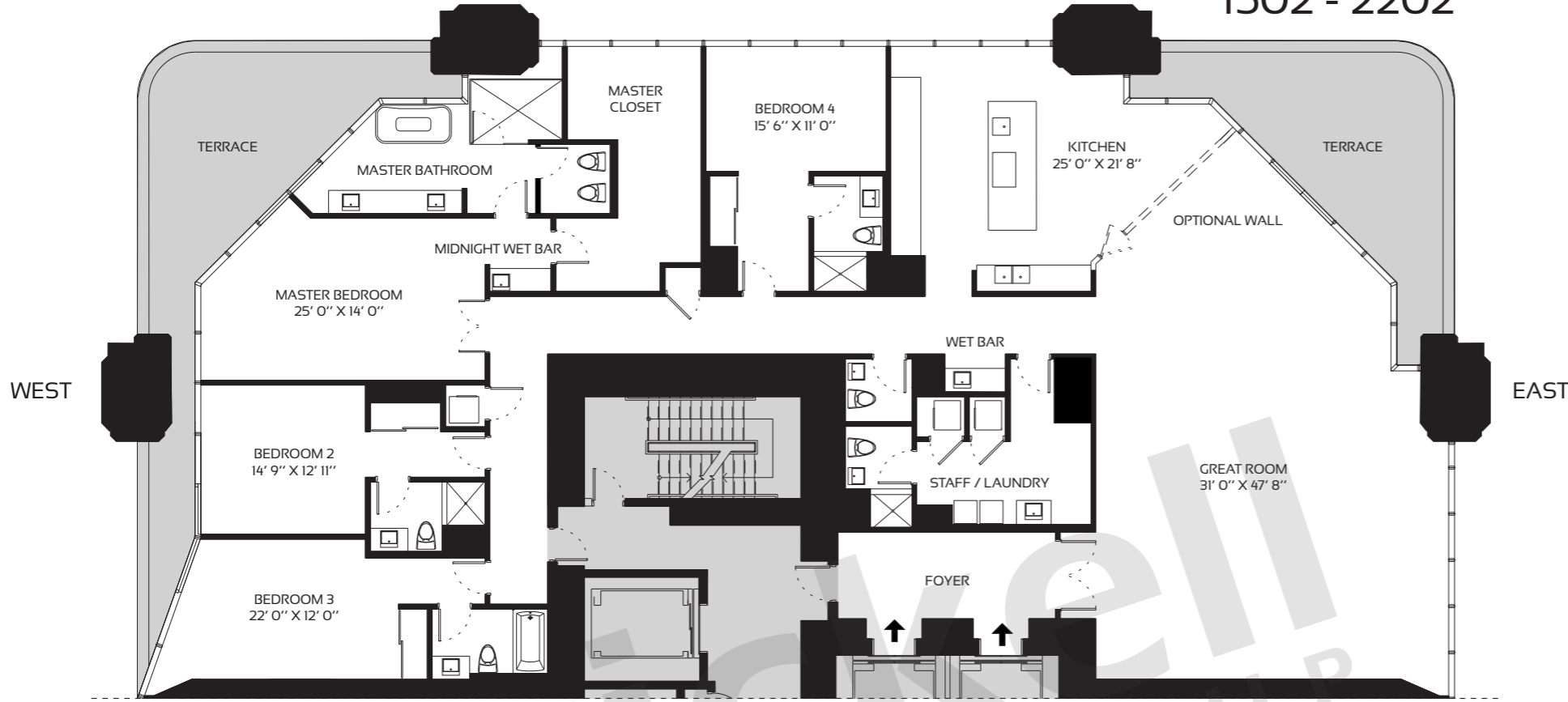
Oral representation cannot be relied upon as correctly stating representations of the developer. Renderings of residences may not reflect the final products. Dimensions, specifications, improvements, rendering, plans, land uses, materials, amenities, prices, and availability are subject to change at the developer's discretion without notice.

Stated dimensions are approximate and measured to the exterior boundaries of the exterior walls and the centerline of interior demising walls which in fact vary from the dimensions that would be determined by using the description and definition of the "Unit" set forth in the Declaration which generally only includes the interior airspace between the perimeter walls (measuring from interior wall plane to interior wall plane) and excludes interior structural components.

For your reference, the square footage area of the Unit, determined in accordance with those Unit boundaries as defined in the Declaration. Note that measurements of rooms set forth on this floor plan are generally taken at the greatest points of each given room (as if the room were a perfect rectangle), without regard for any cutouts. Accordingly, the area of the actual room will typically be smaller than the product obtained by multiplying the stated length times width.

NORTH

1502 - 2202

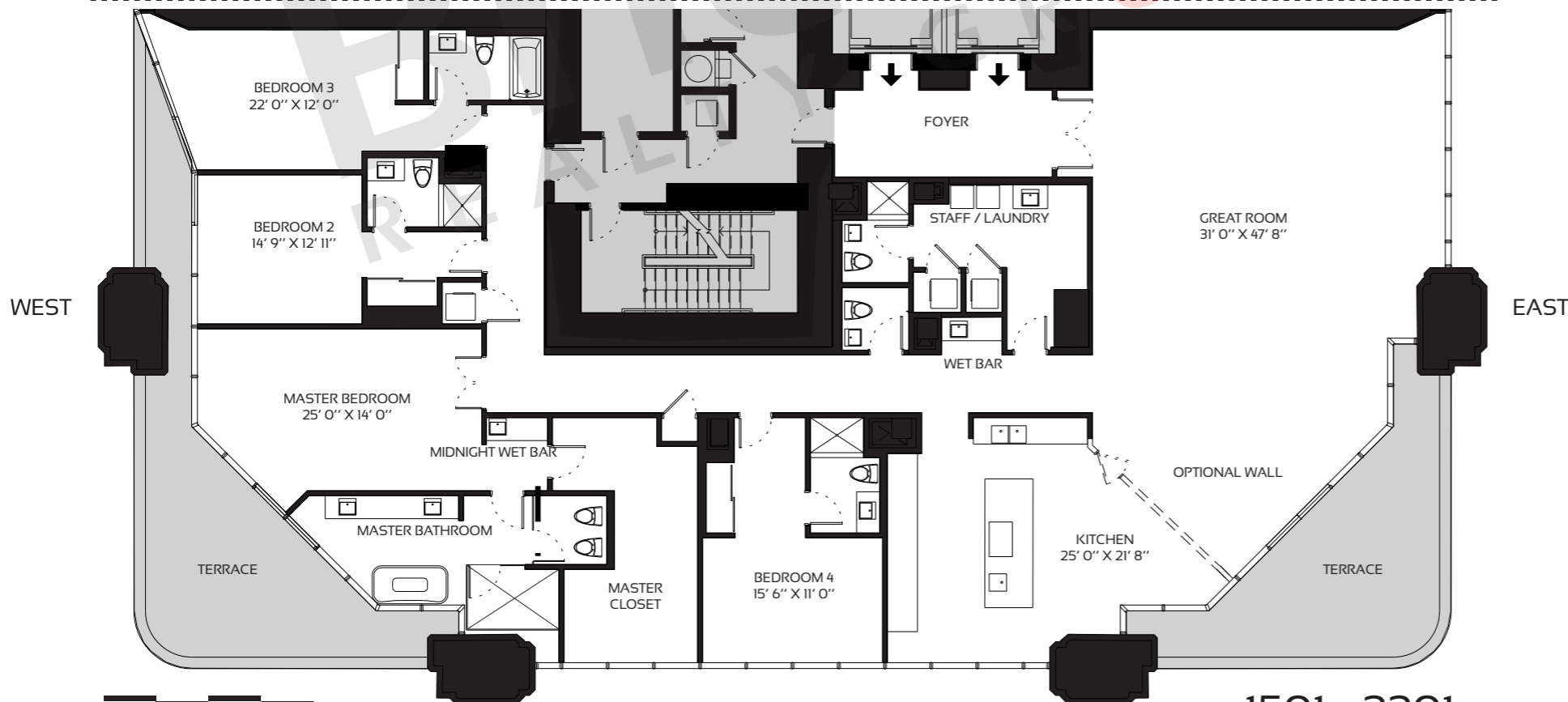


WEST

EAST

SOUTH

1501 - 2201



WEST

EAST

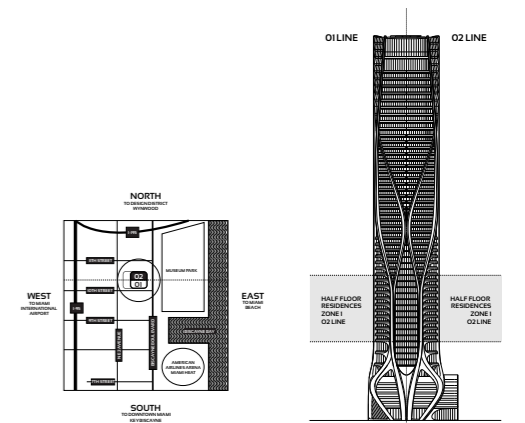
ONE THOUSAND MUSEUM  
BY ZAHA HADID

### HALF-FLOOR RESIDENCES

Zone 1 - Levels 15-25

4 Bedrooms · 5.5 Baths

	SQ FT	M <sup>2</sup>
Interior	4,601	427.4
Terrace	819	76.1
<b>Total</b>	<b>5,420</b>	<b>503.5</b>



# Brickell

REALTY GROUP

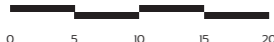
2071 NW 112th Avenue, Miami, FL 33172

[www.brickell-realty.com/1000Museum.html](http://www.brickell-realty.com/1000Museum.html)

Oral representation cannot be relied upon as correctly stating representations of the developer. Renderings of residences may not reflect the final products. Dimensions, specifications, improvements, rendering, plans, land uses, materials, amenities, prices, and availability are subject to change at the developer's discretion without notice.

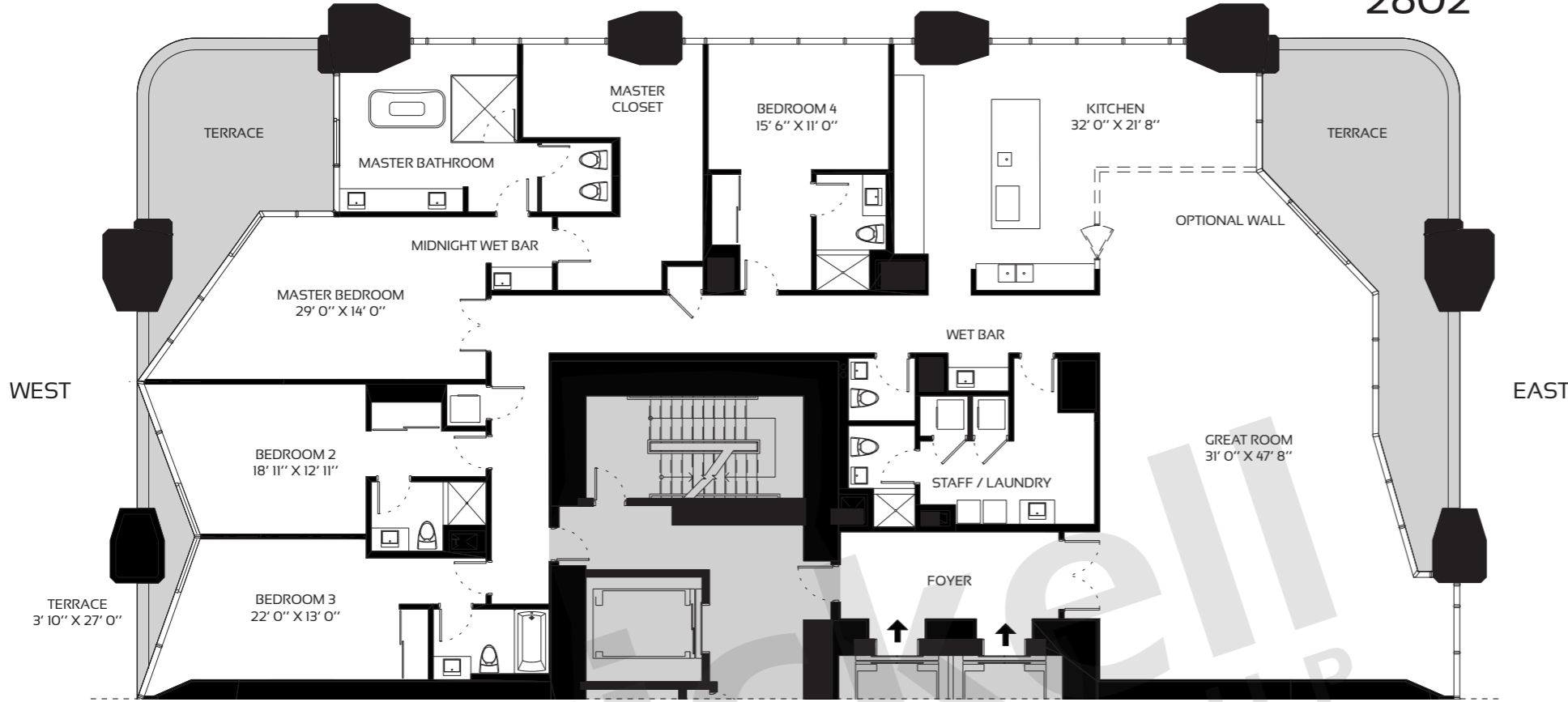
Stated dimensions are approximate and measured to the exterior boundaries of the exterior walls and the centerline of interior demising walls which in fact vary from the dimensions that would be determined by using the description and definition of the "Unit" set forth in the Declaration which generally only includes the interior airspace between the perimeter walls (measuring from interior wall plane to interior wall plane) and excludes interior structural components.

For your reference, the square footage area of the Unit, determined in accordance with those Unit boundaries as defined in the Declaration. Note that measurements of rooms set forth on this floor plan are generally taken at the greatest points of each given room (as if the room were a perfect rectangle), without regard for any cutouts. Accordingly, the area of the actual room will typically be smaller than the product obtained by multiplying the stated length times width.



NORTH

2802



ONE THOUSAND MUSEUM  
BY ZAHA HADID

HALF-FLOOR RESIDENCES

Zone 2 - Levels 26-33  
4 Bedrooms · 5.5 Baths

	SQ FT	M <sup>2</sup>
Interior	4,599	427.2
Terrace	781	72.6
<b>Total</b>	<b>5,380</b>	<b>499.8</b>

WEST

EAST

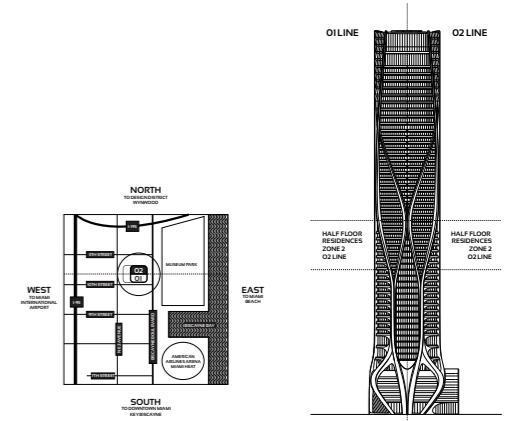
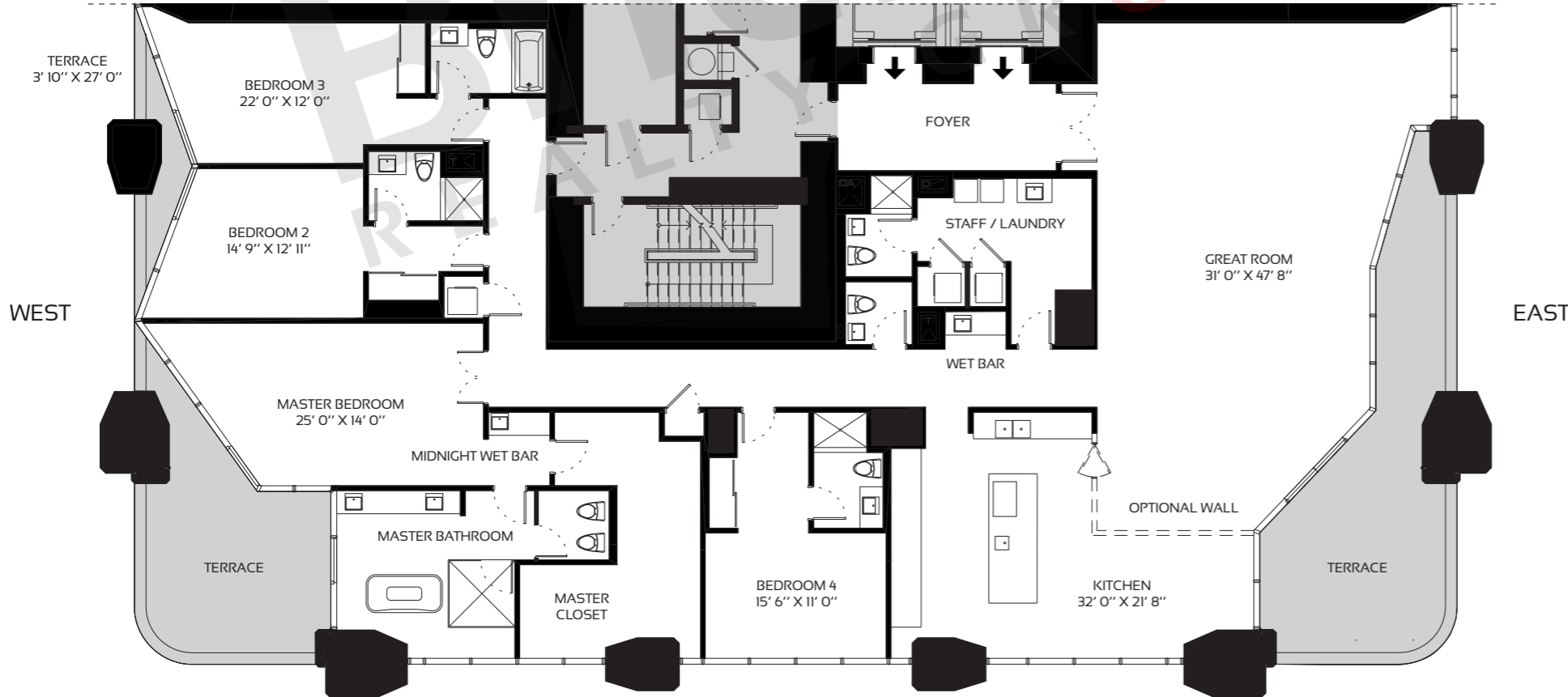
TERRACE 3' 10" X 27' 0"

WEST

EAST

SOUTH

2801



**Brickell**  
REALTY GROUP

2071 NW 112th Avenue, Miami, FL 33172  
[www.brickell-realty.com/1000Museum.html](http://www.brickell-realty.com/1000Museum.html)

Oral representation cannot be relied upon as correctly stating representations of the developer. Renderings of residences may not reflect the final products. Dimensions, specifications, improvements, rendering, plans, land uses, materials, amenities, prices, and availability are subject to change at the developer's discretion without notice.

Stated dimensions are approximate and measured to the exterior boundaries of the exterior walls and the centerline of interior demising walls which in fact vary from the dimensions that would be determined by using the description and definition of the "Unit" set forth in the Declaration which generally only includes the interior airspace between the perimeter walls (measuring from interior wall plane to interior wall plane) and excludes interior structural components.

For your reference, the square footage area of the Unit, determined in accordance with those Unit boundaries as defined in the Declaration. Note that measurements of rooms set forth on this floor plan are generally taken at the greatest points of each given room (as if the room were a perfect rectangle), without regard for any cutouts. Accordingly, the area of the actual room will typically be smaller than the product obtained by multiplying the stated length times width.

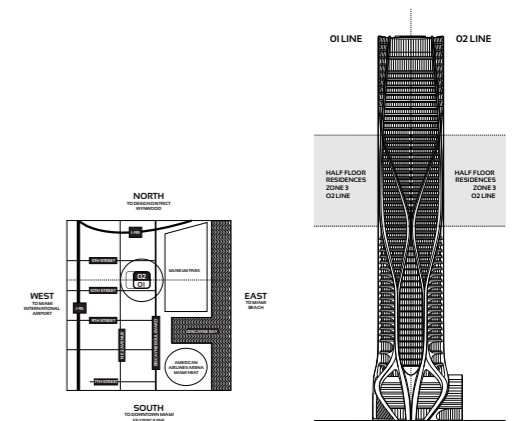
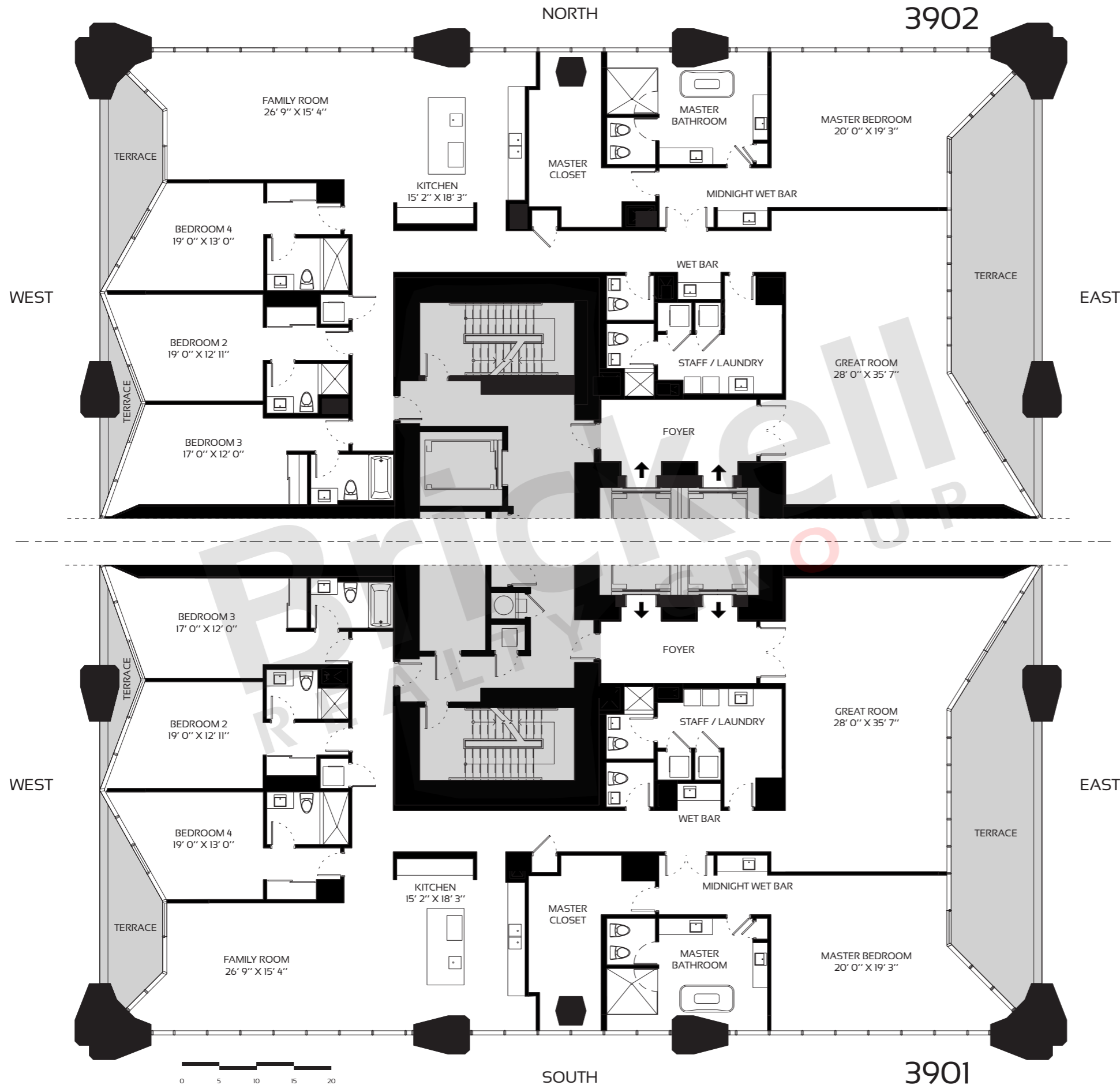


HALF-FLOOR RESIDENCES

Zone 3 - Levels 34-49

4 Bedrooms · 5.5 Baths

	SQ FT	M <sup>2</sup>
Interior	4,822	448.0
Terrace	603	56.0
<b>Total</b>	<b>5,425</b>	<b>504.0</b>



**Brickell**  
REALTY GROUP

2071 NW 112th Avenue, Miami, FL 33172

[www.brickell-realty.com/1000Museum.html](http://www.brickell-realty.com/1000Museum.html)

Oral representation cannot be relied upon as correctly stating representations of the developer. Renderings of residences may not reflect the final products. Dimensions, specifications, improvements, rendering, plans, land uses, materials, amenities, prices, and availability are subject to change at the developer's discretion without notice.

Stated dimensions are approximate and measured to the exterior boundaries of the exterior walls and the centerline of interior demising walls which in fact vary from the dimensions that would be determined by using the description and definition of the "Unit" set forth in the Declaration which generally only includes the interior airspace between the perimeter walls (measuring from interior wall plane to interior wall plane) and excludes interior structural components.

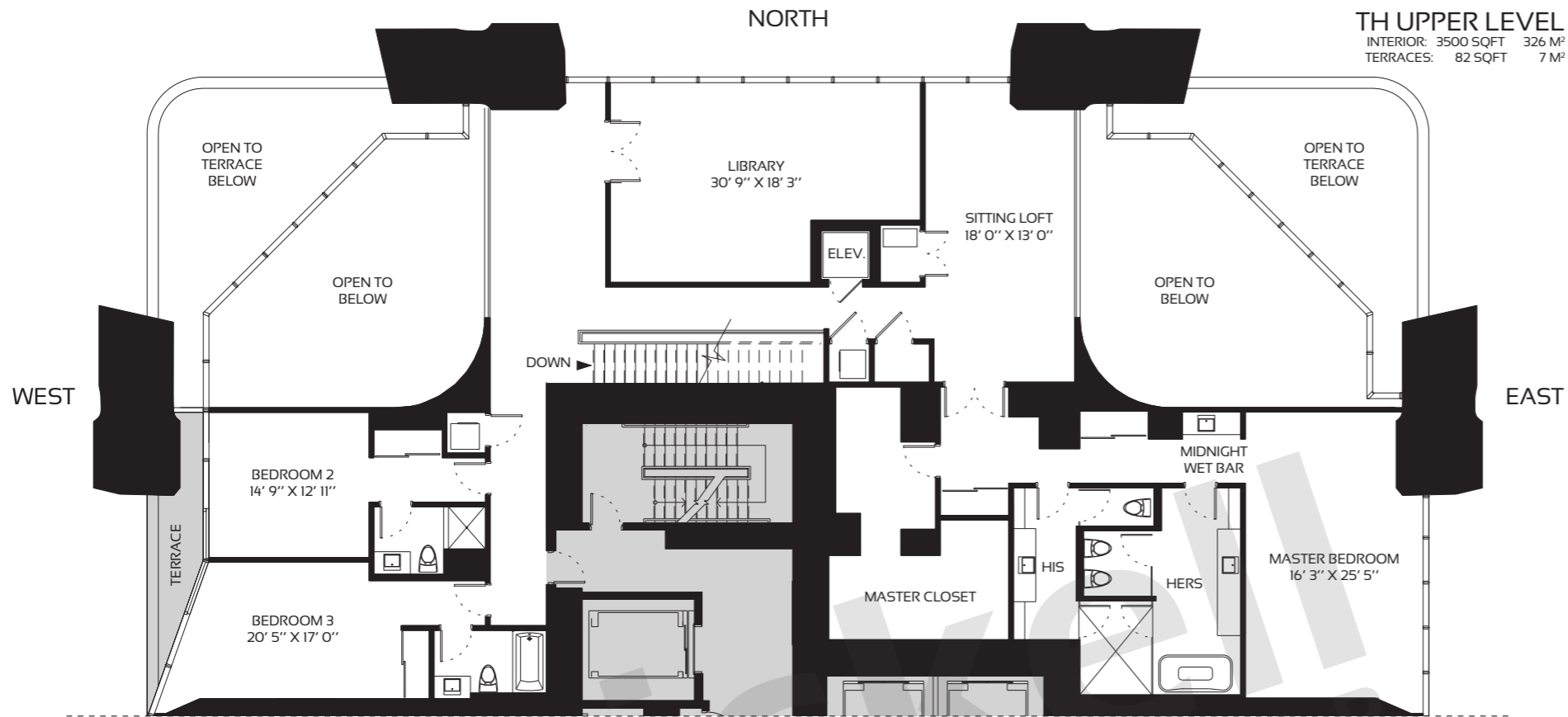
For your reference, the square footage area of the Unit, determined in accordance with those Unit boundaries as defined in the Declaration. Note that measurements of rooms set forth on this floor plan are generally taken at the greatest points of each given room (as if the room were a perfect rectangle), without regard for any cutouts. Accordingly, the area of the actual room will typically be smaller than the product obtained by multiplying the stated length times width.

TOWNHOUSE RESIDENCE 1002

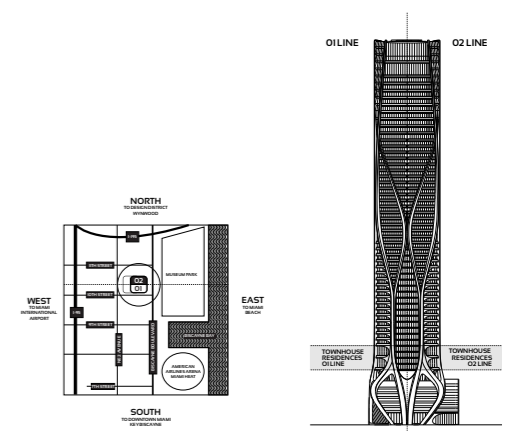
Levels 10-11

5 Bedrooms · 6.5 Baths

	SQ FT	M <sup>2</sup>
Interior	8,060	748.8
Terrace	834	77.5
<b>Total</b>	<b>8,894</b>	<b>826.3</b>



**1002 LOWER LEVEL**  
INTERIOR: 4560 SQFT 423 M<sup>2</sup>  
TERRACES: 752 SQFT 70 M<sup>2</sup>



**Brickell**  
REALTY GROUP

2071 NW 112th Avenue, Miami, FL 33172

[www.brickell-realty.com/1000Museum.html](http://www.brickell-realty.com/1000Museum.html)

Oral representation cannot be relied upon as correctly stating representations of the developer. Renderings of residences may not reflect the final products. Dimensions, specifications, improvements, rendering, plans, land uses, materials, amenities, prices, and availability are subject to change at the developer's discretion without notice.

Stated dimensions are approximate and measured to the exterior boundaries of the exterior walls and the centerline of interior demising walls which in fact vary from the dimensions that would be determined by using the description and definition of the "Unit" set forth in the Declaration which generally only includes the interior airspace between the perimeter walls (measuring from interior wall plane to interior wall plane) and excludes interior structural components.

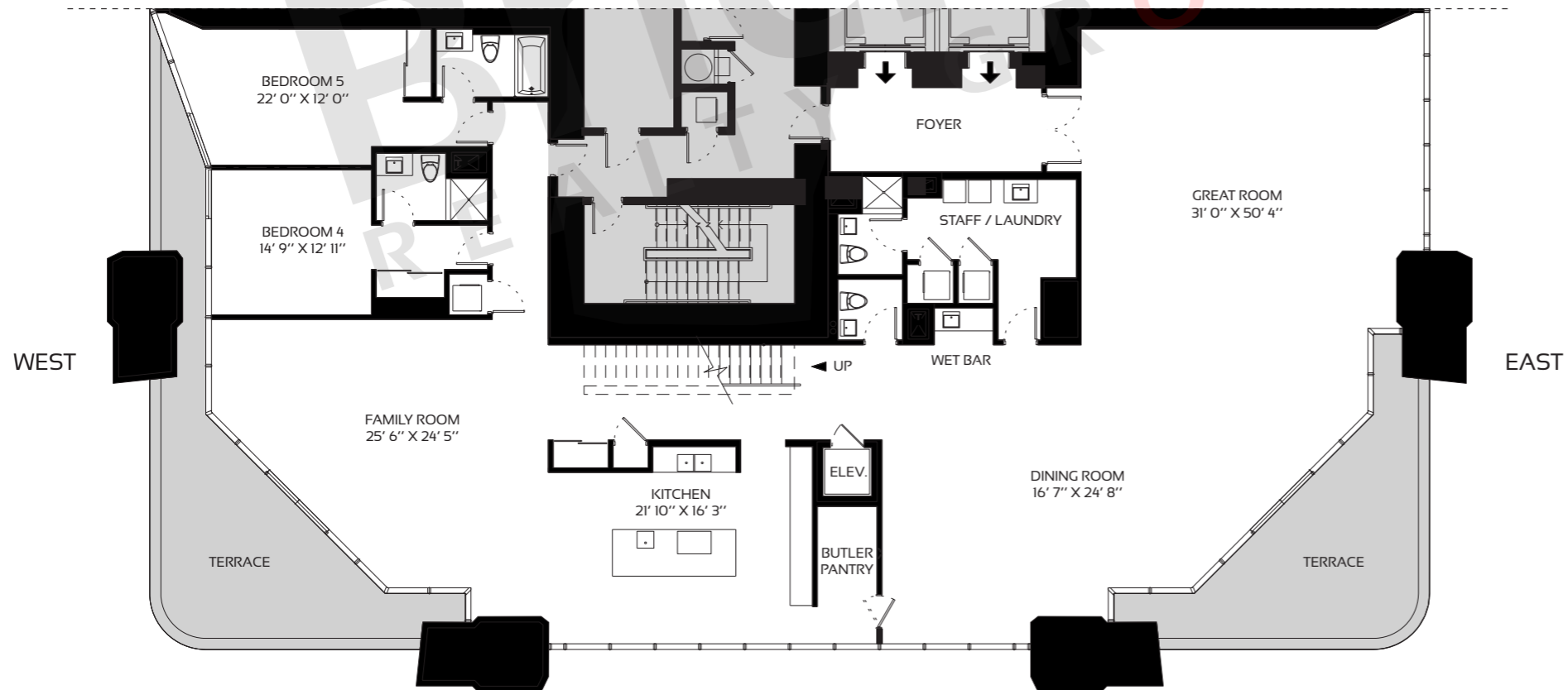
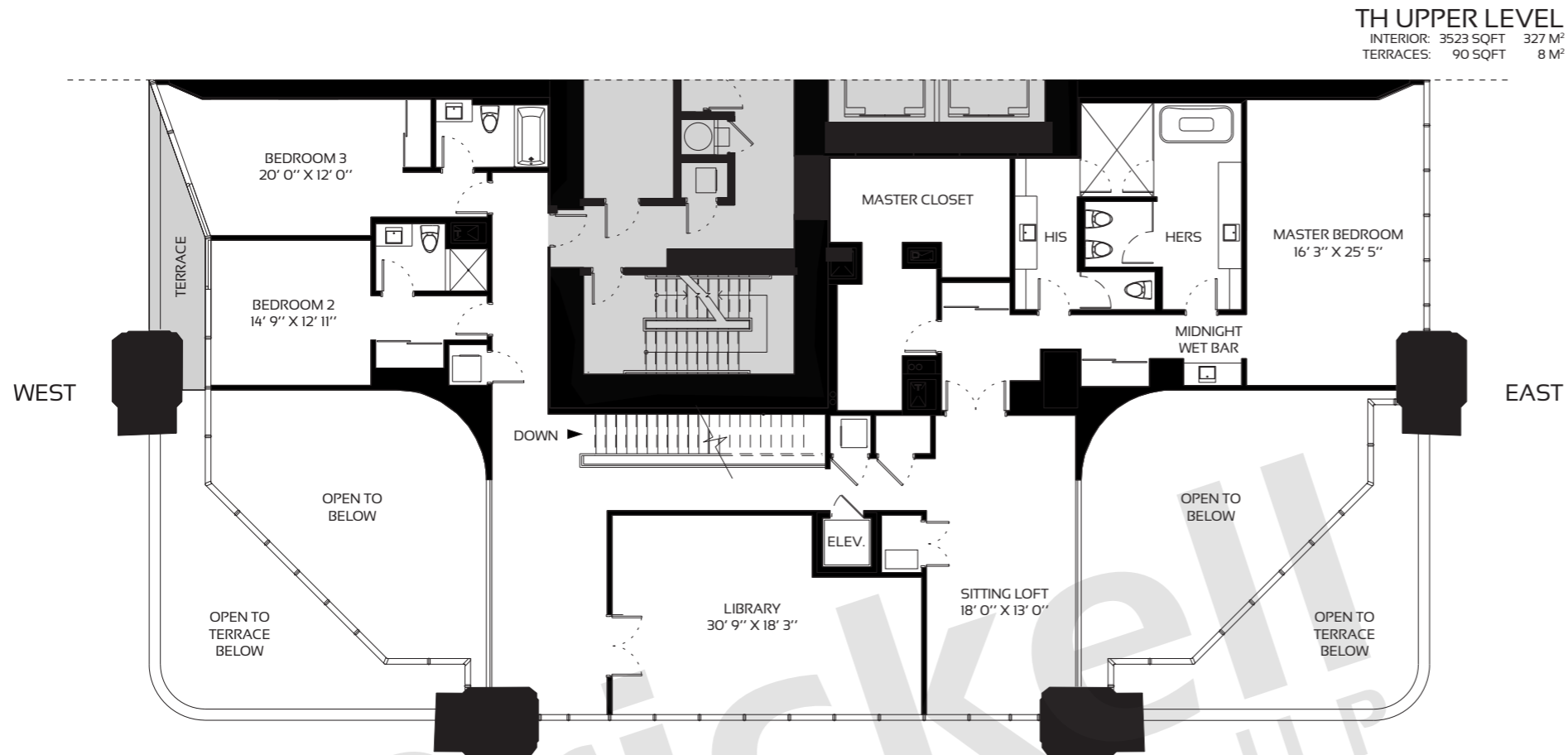
For your reference, the square footage area of the Unit, determined in accordance with those Unit boundaries as defined in the Declaration. Note that measurements of rooms set forth on this floor plan are generally taken at the greatest points of each given room (as if the room were a perfect rectangle), without regard for any cutouts. Accordingly, the area of the actual room will typically be smaller than the product obtained by multiplying the stated length times width.

TOWNHOUSE RESIDENCE 1201

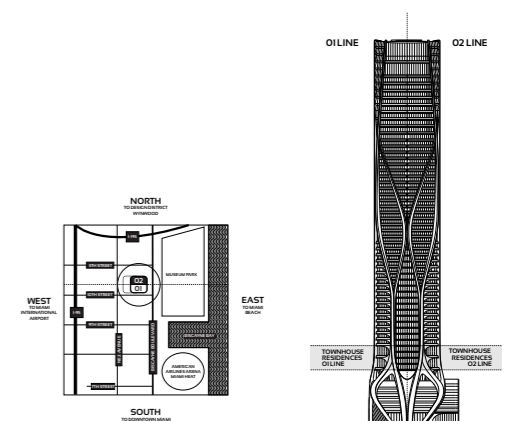
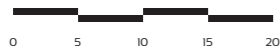
Levels 12-14

5 Bedrooms · 6.5 Baths

	SQ FT	M <sup>2</sup>
Interior	8,102	752.7
Terrace	899	83.5
<b>Total</b>	<b>9,001</b>	<b>836.2</b>



**1201 LOWER LEVEL**  
INTERIOR: 4579 SQFT 426 M<sup>2</sup>  
TERRACES: 809 SQFT 76 M<sup>2</sup>



**Brickell REALTY GROUP**  
2071 NW 112th Avenue, Miami, FL 33172  
[www.brickell-realty.com/1000Museum.html](http://www.brickell-realty.com/1000Museum.html)

Oral representation cannot be relied upon as correctly stating representations of the developer. Renderings of residences may not reflect the final products. Dimensions, specifications, improvements, rendering, plans, land uses, materials, amenities, prices, and availability are subject to change at the developer's discretion without notice.

Stated dimensions are approximate and measured to the exterior boundaries of the exterior walls and the centerline of interior demising walls which in fact vary from the dimensions that would be determined by using the description and definition of the "Unit" set forth in the Declaration which generally only includes the interior airspace between the perimeter walls (measuring from interior wall plane to interior wall plane) and excludes interior structural components.

For your reference, the square footage area of the Unit, determined in accordance with those Unit boundaries as defined in the Declaration. Note that measurements of rooms set forth on this floor plan are generally taken at the greatest points of each given room (as if the room were a perfect rectangle), without regard for any cutouts. Accordingly, the area of the actual room will typically be smaller than the product obtained by multiplying the stated length times width.