

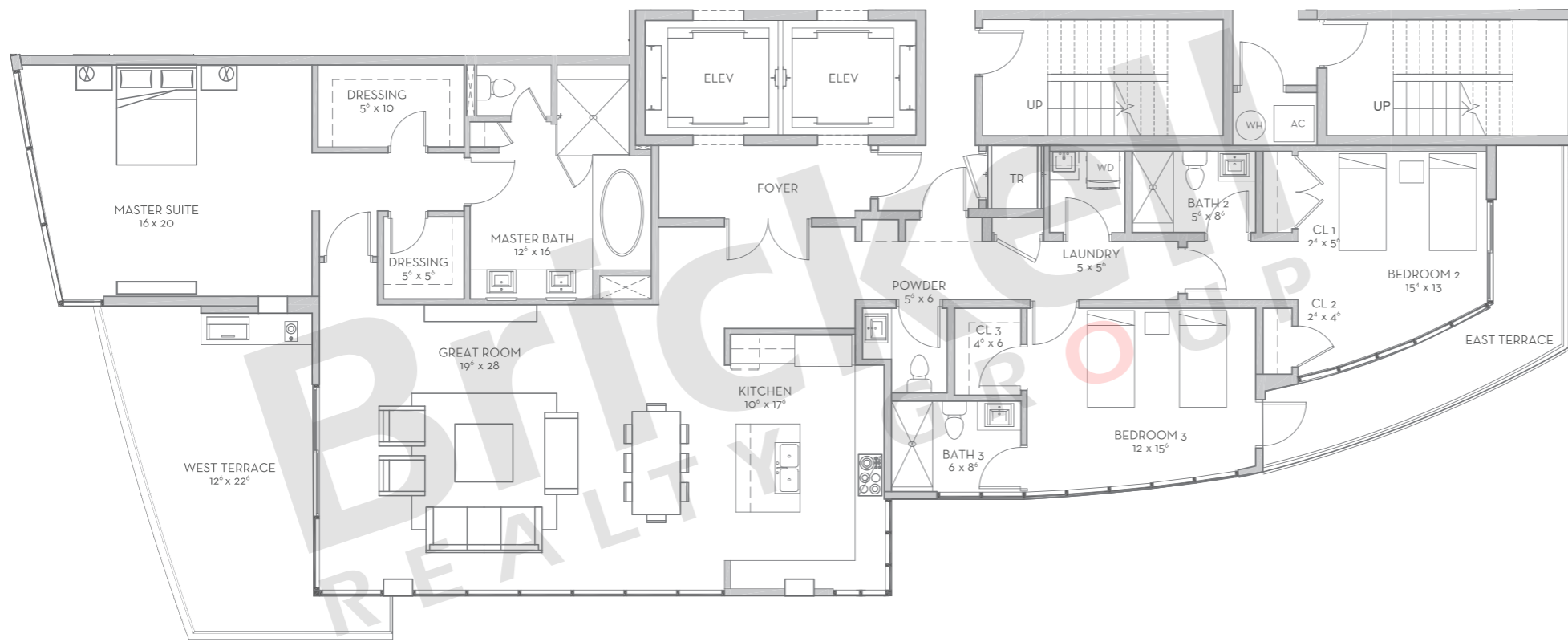
# ADAGIO

Fort Lauderdale Beach

WATERFRONT  
LUXURY RESIDENCES

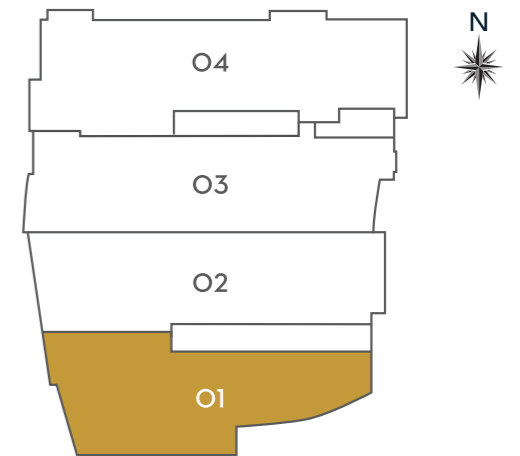
## Residence 01

3 Bedrooms · 3.5 Baths · Foyer  
2 Elevators



	SQ FT	M <sup>2</sup>
Interior	2,383	221.4
Terrace	436	40.5
<b>Total</b>	<b>2,819</b>	<b>261.9</b>

Floors: 4 - 10



## Brickell REALTY GROUP

2071 NW 112th Avenue, Miami, FL 33172

[www.brickell-realty.com/AdagioFL.html](http://www.brickell-realty.com/AdagioFL.html)

Oral representation cannot be relied upon as correctly stating representations of the developer. Pictures of homes and condos may not reflect the final products which may vary. Dimensions, specifications, improvements, rendering, plans, land uses, materials, amenities, prices, and availability are subject to change at the developer's discretion without notice.

Stated dimensions are approximate and measured to the exterior boundaries of the exterior walls and the centerline of interior demising walls which in fact vary from the dimensions that would be determined by using the description and definition of the "Unit" set forth in the Declaration (which generally only includes the interior airspace between the perimeter walls and excludes interior structural components).

# ADAGIO

Fort Lauderdale Beach

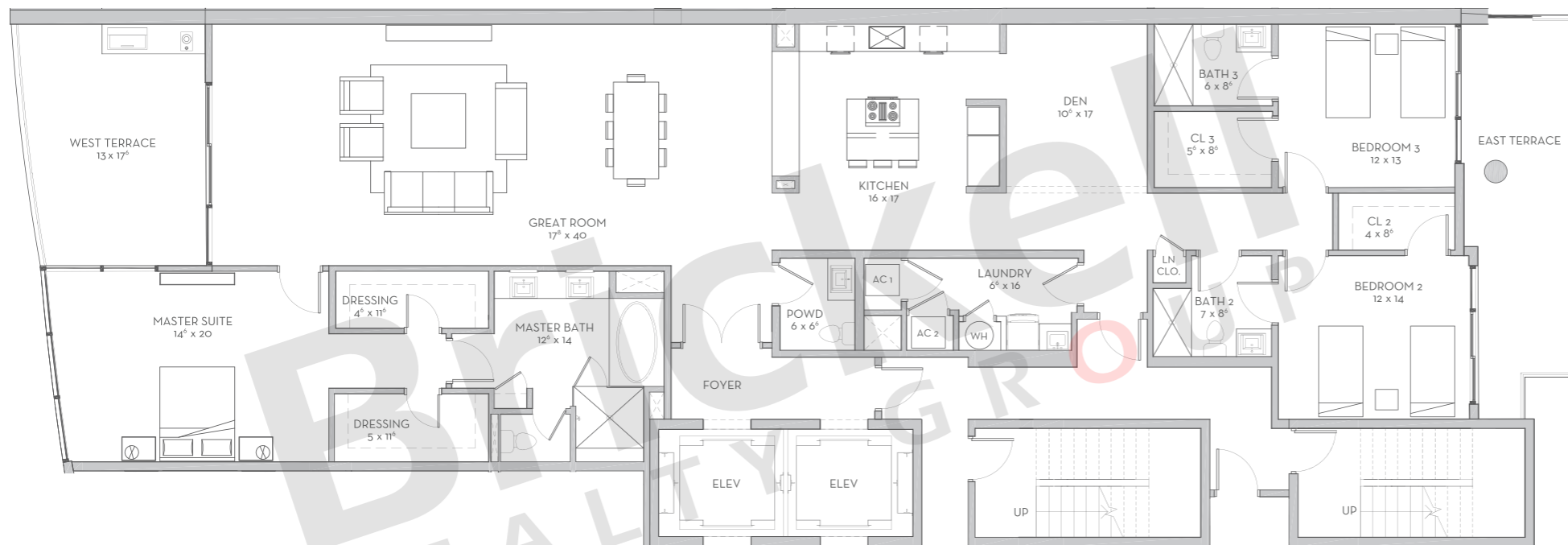
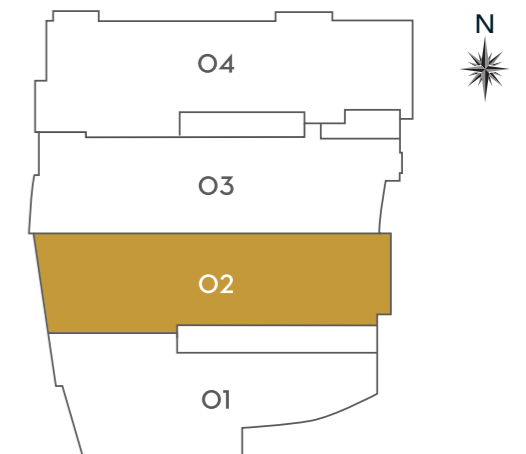
WATERFRONT  
LUXURY RESIDENCES

## Residence 02

3 Bedrooms · 3.5 Baths · Foyer  
Den · Great Room · 2 Elevators

	SQ FT	M <sup>2</sup>
Interior	2,746	255.1
Terrace	464	43.1
<b>Total</b>	<b>3,210</b>	<b>298.2</b>

Floors: 4 - 10



BRICKELL REALTY GROUP

## Brickell REALTY GROUP

2071 NW 112th Avenue, Miami, FL 33172

[www.brickell-realty.com/AdagioFL.html](http://www.brickell-realty.com/AdagioFL.html)

Oral representation cannot be relied upon as correctly stating representations of the developer. Pictures of homes and condos may not reflect the final products which may vary. Dimensions, specifications, improvements, rendering, plans, land uses, materials, amenities, prices, and availability are subject to change at the developer's discretion without notice.

Stated dimensions are approximate and measured to the exterior boundaries of the exterior walls and the centerline of interior demising walls which in fact vary from the dimensions that would be determined by using the description and definition of the "Unit" set forth in the Declaration (which generally only includes the interior airspace between the perimeter walls and excludes interior structural components).

# ADAGIO

Fort Lauderdale Beach

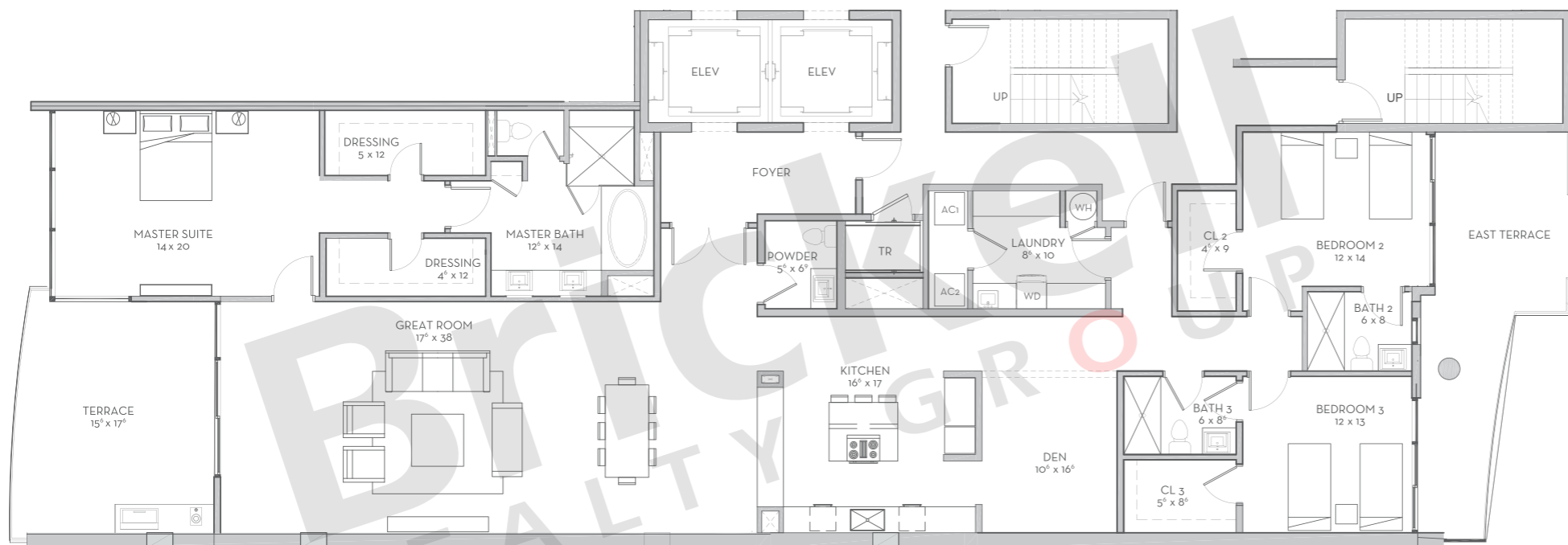
WATERFRONT  
LUXURY RESIDENCES

## Residence 03

3 Bedrooms · 3.5 Baths · Foyer  
Den · Great Room · 2 Elevators

	SQ FT	M <sup>2</sup>
Interior	2,850	264.8
Terrace	526	48.9
<b>Total</b>	<b>3,376</b>	<b>313.7</b>

Floors: 4 - 11



# Brickell

REALTY GROUP

2071 NW 112th Avenue, Miami, FL 33172

[www.brickell-realty.com/AdagioFL.html](http://www.brickell-realty.com/AdagioFL.html)

Oral representation cannot be relied upon as correctly stating representations of the developer. Pictures of homes and condos may not reflect the final products which may vary. Dimensions, specifications, improvements, rendering, plans, land uses, materials, amenities, prices, and availability are subject to change at the developer's discretion without notice.

Stated dimensions are approximate and measured to the exterior boundaries of the exterior walls and the centerline of interior demising walls which in fact vary from the dimensions that would be determined by using the description and definition of the "Unit" set forth in the Declaration (which generally only includes the interior airspace between the perimeter walls and excludes interior structural components).

# ADAGIO

Fort Lauderdale Beach

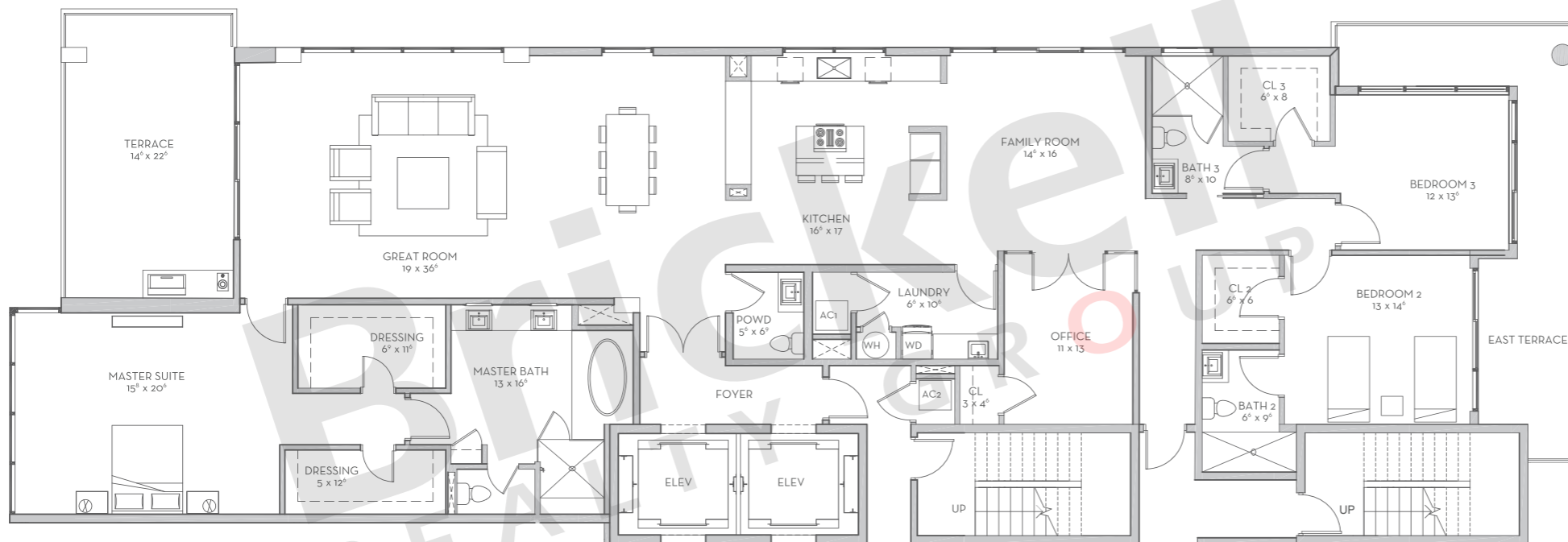
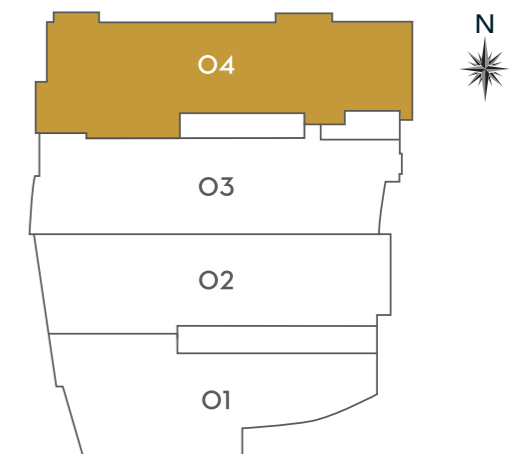
WATERFRONT  
LUXURY RESIDENCES

## Residence 04

3 Bedrooms · 3.5 Baths  
Foyer · Den · Great Room  
Office · 2 Elevators

	SQ FT	M <sup>2</sup>
Interior	3,211	298.3
Terrace	586	54.4
<b>Total</b>	<b>3,797</b>	<b>352.7</b>

Floors: 4 - 11



# Brickell

REALTY GROUP

2071 NW 112th Avenue, Miami, FL 33172

[www.brickell-realty.com/AdagioFL.html](http://www.brickell-realty.com/AdagioFL.html)

Oral representation cannot be relied upon as correctly stating representations of the developer. Pictures of homes and condos may not reflect the final products which may vary. Dimensions, specifications, improvements, rendering, plans, land uses, materials, amenities, prices, and availability are subject to change at the developer's discretion without notice.

Stated dimensions are approximate and measured to the exterior boundaries of the exterior walls and the centerline of interior demising walls which in fact vary from the dimensions that would be determined by using the description and definition of the "Unit" set forth in the Declaration (which generally only includes the interior airspace between the perimeter walls and excludes interior structural components).

# ADAGIO

Fort Lauderdale Beach

WATERFRONT  
LUXURY RESIDENCES

## Grande Residences

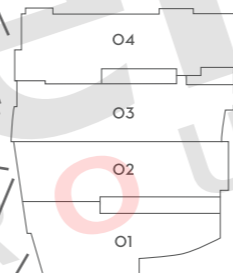
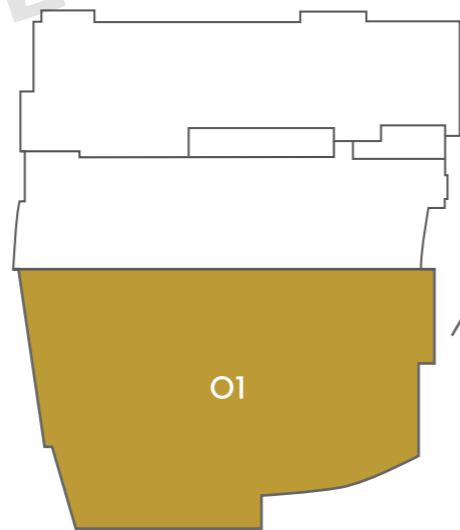
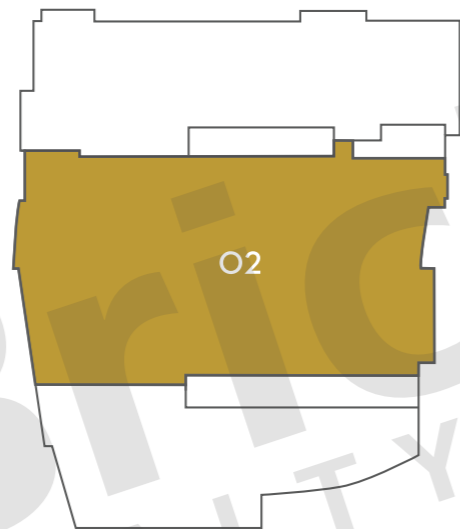
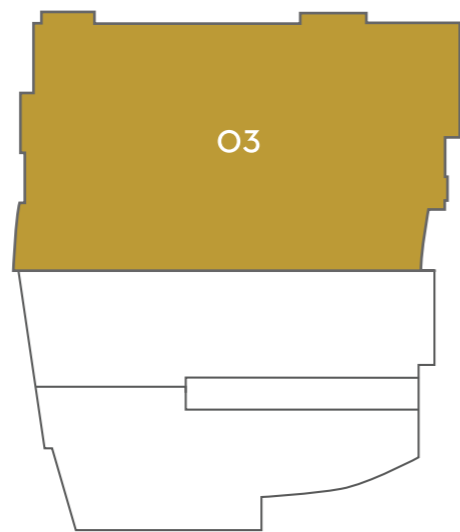
5 Bedrooms · 5.5 Baths

4 Parking Spaces

GR 3	SQ FT	M <sup>2</sup>
Interior	6,370	591.8
Terrace	1,112	103.3
<b>Total</b>	<b>7,482</b>	<b>695.1</b>

GR 2	SQ FT	M <sup>2</sup>
Interior	5,695	529.1
Terrace	990	92.0
<b>Total</b>	<b>6,685</b>	<b>621.1</b>

GR 1	SQ FT	M <sup>2</sup>
Interior	5,390	500.7
Terrace	900	83.6
<b>Total</b>	<b>6,290</b>	<b>584.3</b>



Brickell REALTY GROUP

## Brickell REALTY GROUP

2071 NW 112th Avenue, Miami, FL 33172

[www.brickell-realty.com/AdagioFL.html](http://www.brickell-realty.com/AdagioFL.html)

Oral representation cannot be relied upon as correctly stating representations of the developer. Pictures of homes and condos may not reflect the final products which may vary. Dimensions, specifications, improvements, rendering, plans, land uses, materials, amenities, prices, and availability are subject to change at the developer's discretion without notice.

Stated dimensions are approximate and measured to the exterior boundaries of the exterior walls and the centerline of interior demising walls which in fact vary from the dimensions that would be determined by using the description and definition of the "Unit" set forth in the Declaration (which generally only includes the interior airspace between the perimeter walls and excludes interior structural components).

# ADAGIO

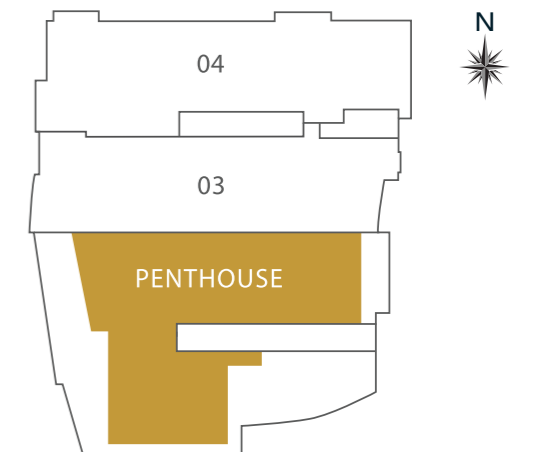
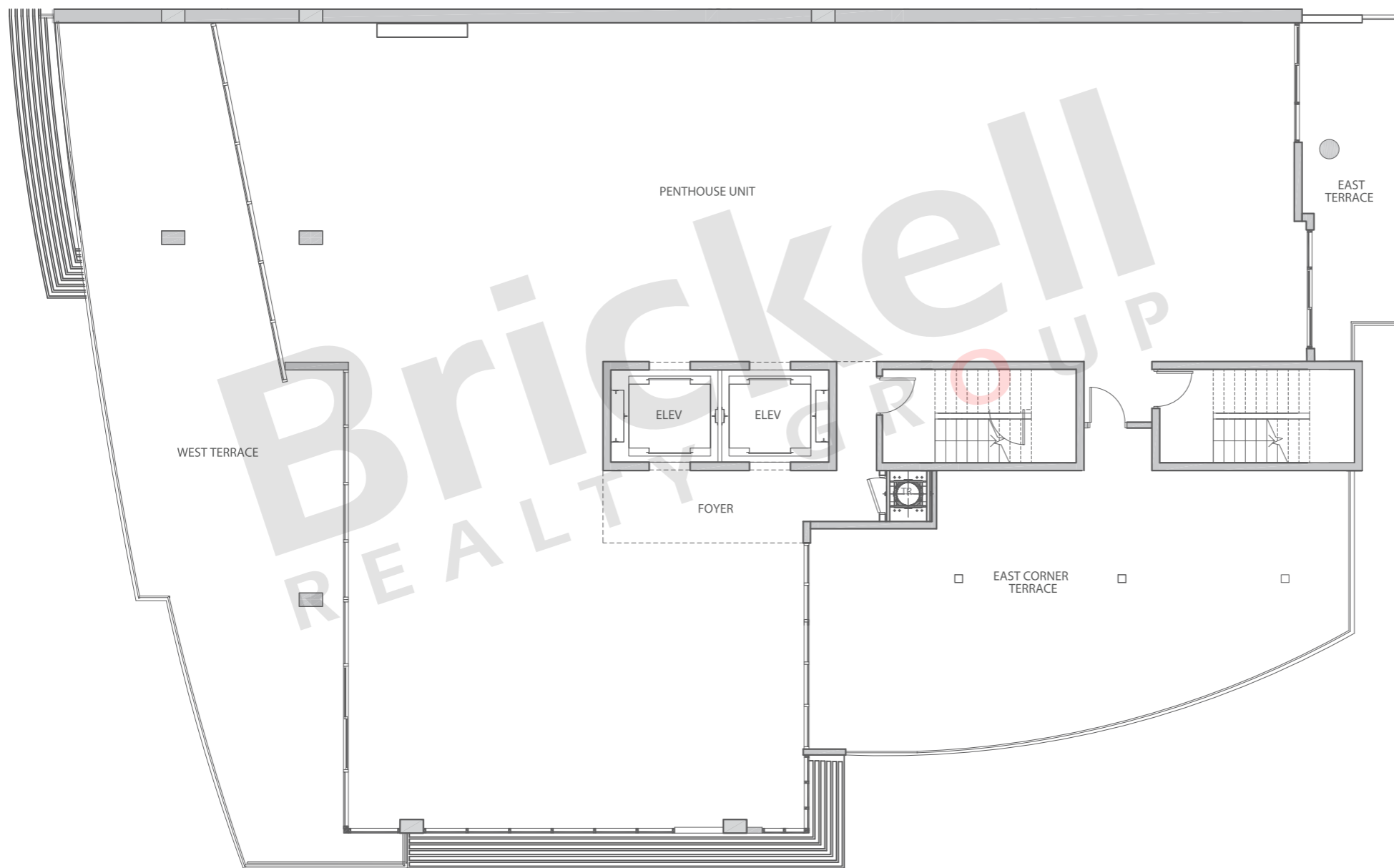
Fort Lauderdale Beach

WATERFRONT  
LUXURY RESIDENCES

## Penthouse

2 Elevators · Foyer

	SQ FT	M <sup>2</sup>
Interior	4,085	379.5
Terrace	2,234	207.5
<b>Total</b>	<b>6,319</b>	<b>587.0</b>



**Brickell**  
REALTY GROUP

2071 NW 112th Avenue, Miami, FL 33172

[www.brickell-realty.com/AdagioFL.html](http://www.brickell-realty.com/AdagioFL.html)

Oral representation cannot be relied upon as correctly stating representations of the developer. Pictures of homes and condos may not reflect the final products which may vary. Dimensions, specifications, improvements, rendering, plans, land uses, materials, amenities, prices, and availability are subject to change at the developer's discretion without notice.

Stated dimensions are approximate and measured to the exterior boundaries of the exterior walls and the centerline of interior demising walls which in fact vary from the dimensions that would be determined by using the description and definition of the "Unit" set forth in the Declaration (which generally only includes the interior airspace between the perimeter walls and excludes interior structural components).