

ONE PARAISO

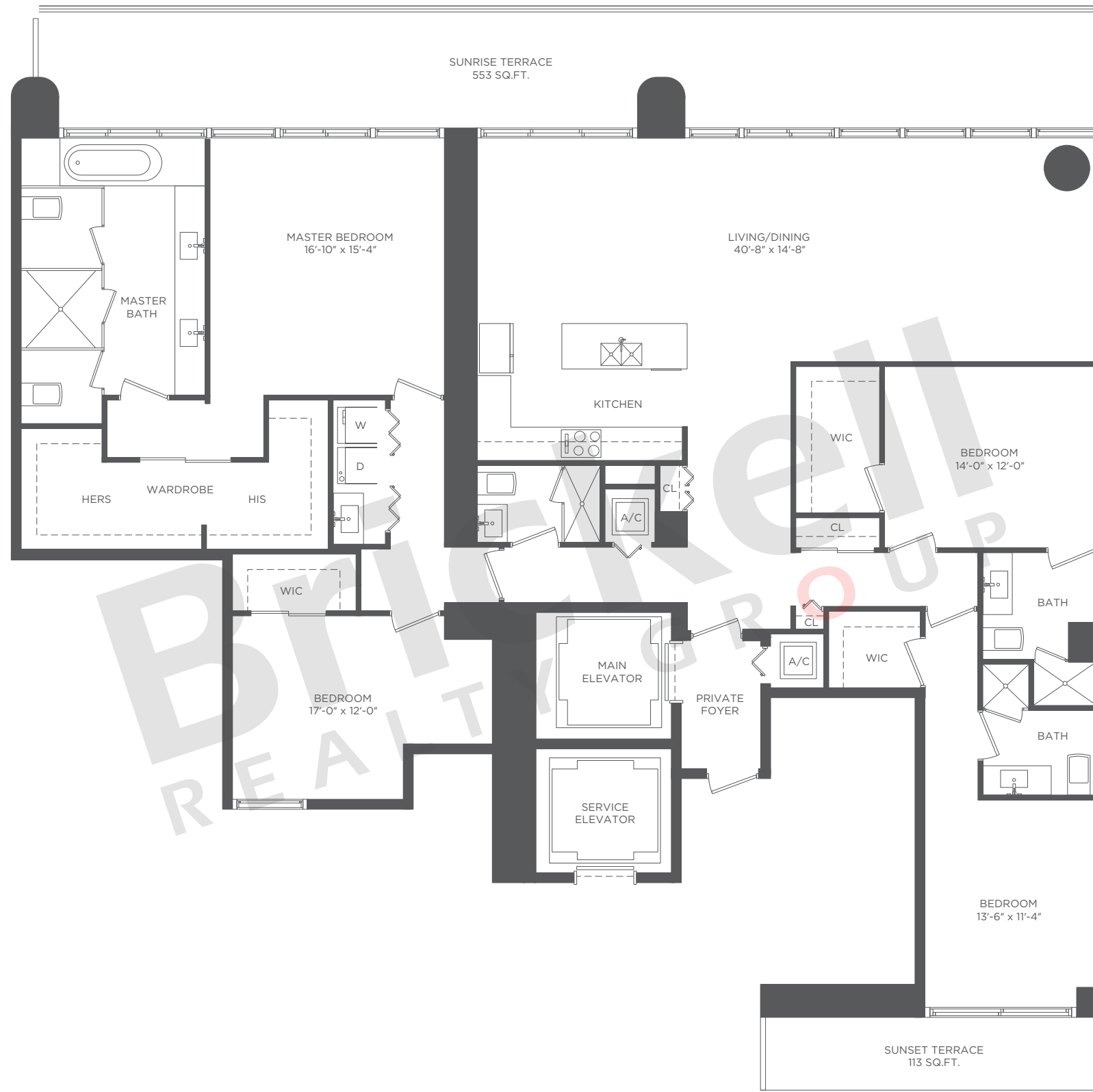
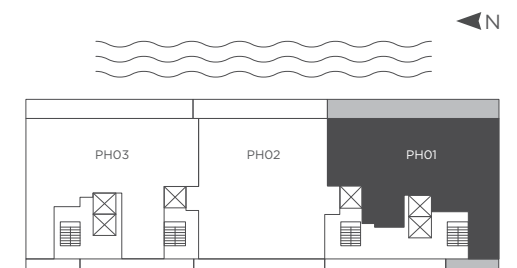
BY PIERO LISSONI

Penthouse 01

Levels 50TH to 52ND

4 Bedrooms · 4 Baths

	SQ FT	M ²
Interior	3,015	280.1
Terrace	666	61.9
Total	3,681	342.0



Brickell
REALTY GROUP

2071 NW 112th Avenue, Miami, FL 33172

www.brickell-realty.com/OneParaiso.html

Oral representation cannot be relied upon as correctly stating representations of the developer. Pictures of homes and condos may not reflect the final products which may vary. Dimensions, specifications, improvements, rendering, plans, land uses, materials, amenities, prices, and availability are subject to change at the developer's discretion without notice.

Stated dimensions are approximate and measured to the exterior boundaries of the exterior walls and the centerline of interior demising walls which in fact vary from the dimensions that would be determined by using the description and definition of the "Unit" set forth in the Declaration (which generally only includes the interior airspace between the perimeter walls and excludes interior structural components).

ONE PARAISO

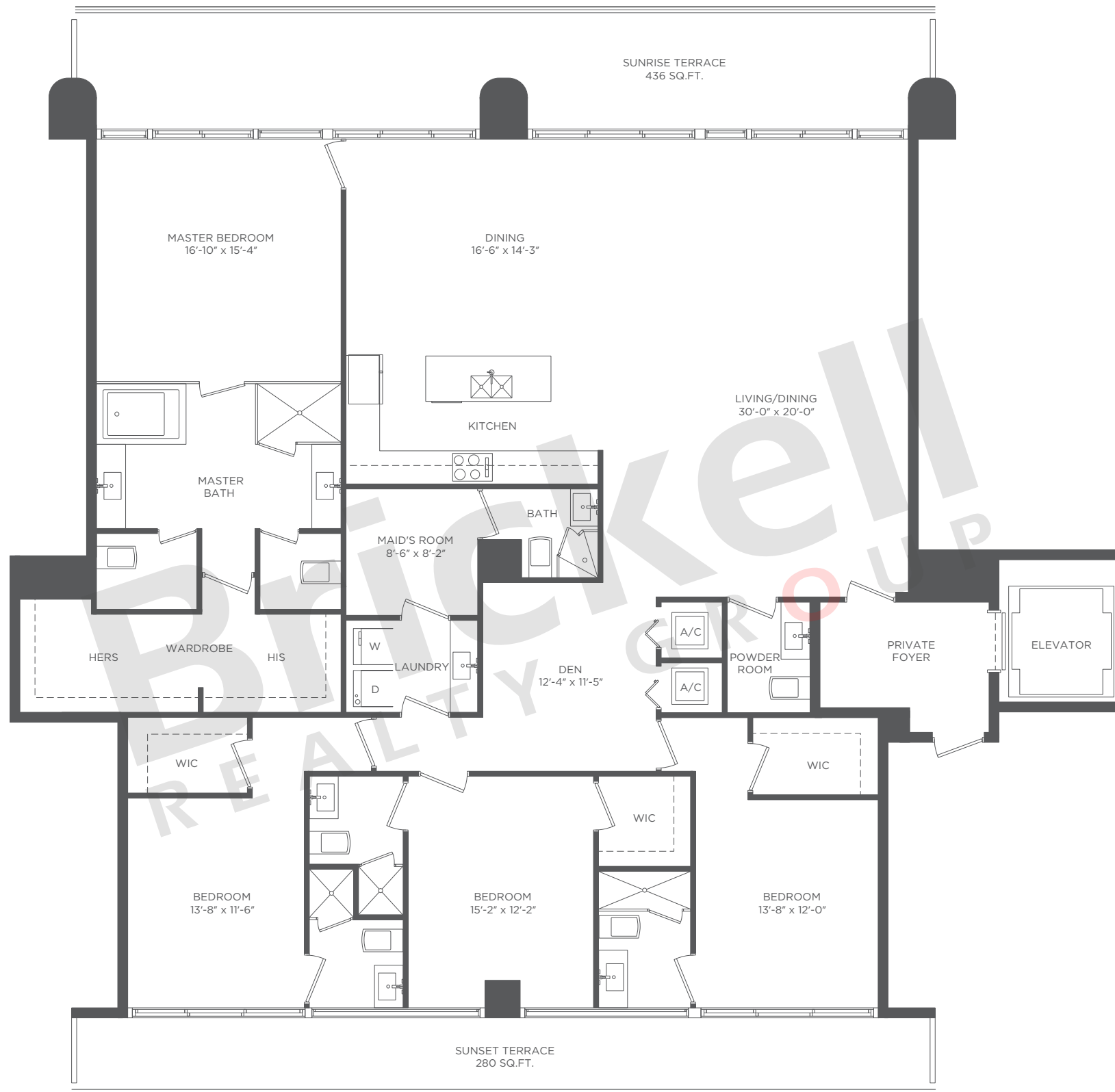
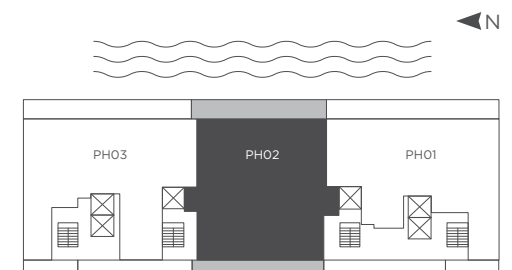
BY PIERO LISSONI

Penthouse 02

Levels 50TH to 52ND

4 Bedrooms · 5.5 Baths · Den
Maid's Room

	SQ FT	M ²
Interior	3,289	305.5
Terrace	716	66.5
Total	4,005	372.0



Brickell
REALTY GROUP

2071 NW 112th Avenue, Miami, FL 33172

www.brickell-realty.com/OneParaiso.html

Oral representation cannot be relied upon as correctly stating representations of the developer. Pictures of homes and condos may not reflect the final products which may vary. Dimensions, specifications, improvements, rendering, plans, land uses, materials, amenities, prices, and availability are subject to change at the developer's discretion without notice.

Stated dimensions are approximate and measured to the exterior boundaries of the exterior walls and the centerline of interior demising walls which in fact vary from the dimensions that would be determined by using the description and definition of the "Unit" set forth in the Declaration (which generally only includes the interior airspace between the perimeter walls and excludes interior structural components).

ONE PARAISO

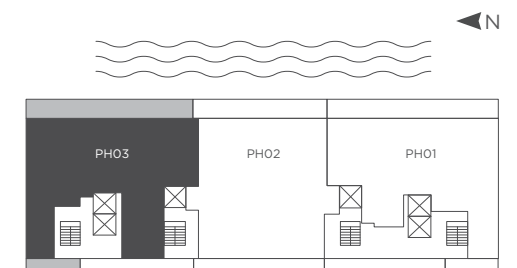
BY PIERO LISSONI

Penthouse 03

Levels 50TH to 52ND

4 Bedrooms · 5.5 Baths
Maid's Room

	SQ.FT	M ²
Interior	3,319	308.3
Terrace	666	61.9
Total	3,985	370.2



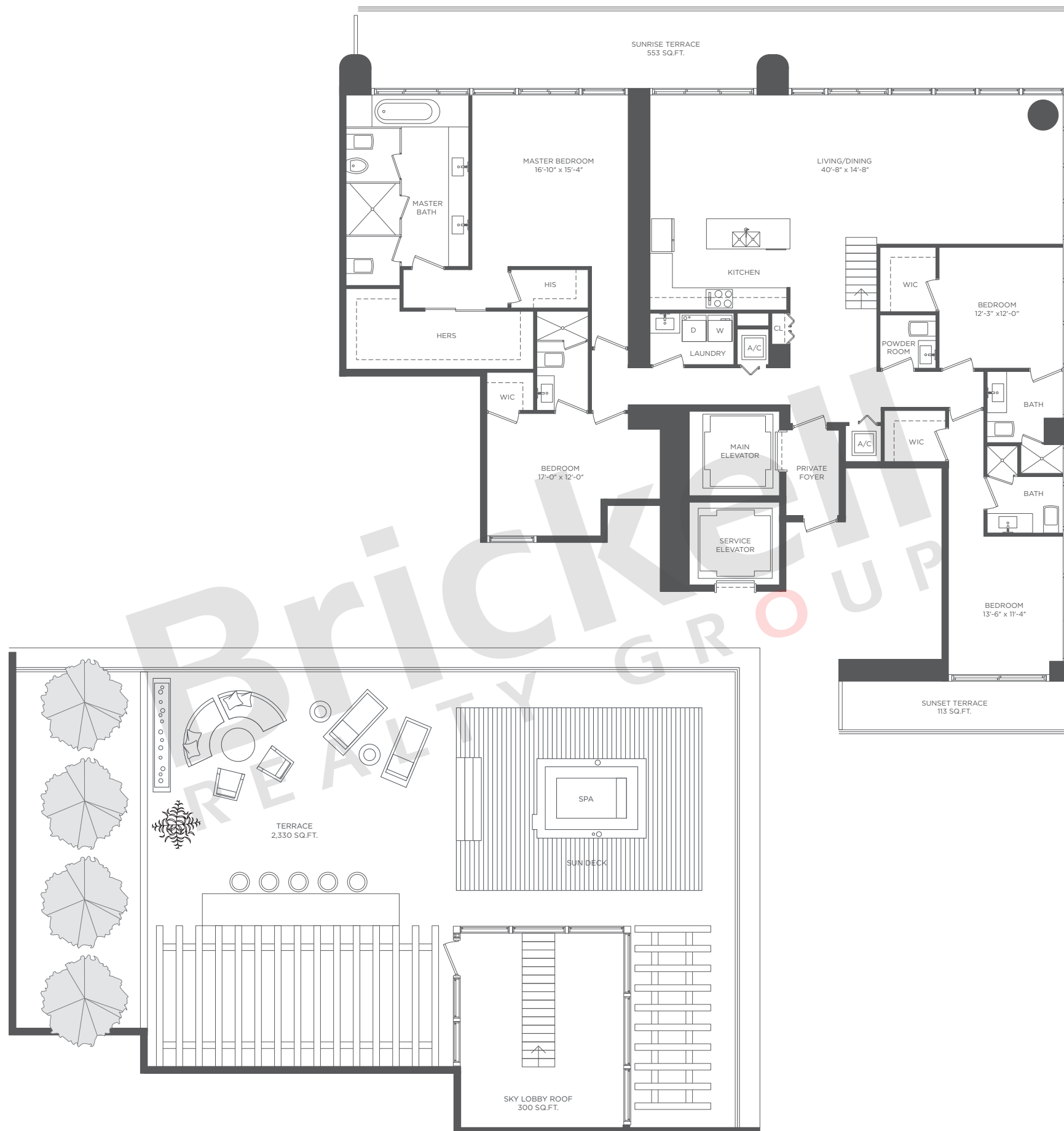
Brickell
REALTY GROUP

2071 NW 112th Avenue, Miami, FL 33172

www.brickell-realty.com/OneParaiso.html

Oral representation cannot be relied upon as correctly stating representations of the developer. Pictures of homes and condos may not reflect the final products which may vary. Dimensions, specifications, improvements, rendering, plans, land uses, materials, amenities, prices, and availability are subject to change at the developer's discretion without notice.

Stated dimensions are approximate and measured to the exterior boundaries of the exterior walls and the centerline of interior demising walls which in fact vary from the dimensions that would be determined by using the description and definition of the "Unit" set forth in the Declaration (which generally only includes the interior airspace between the perimeter walls and excludes interior structural components).



ONE PARAISO

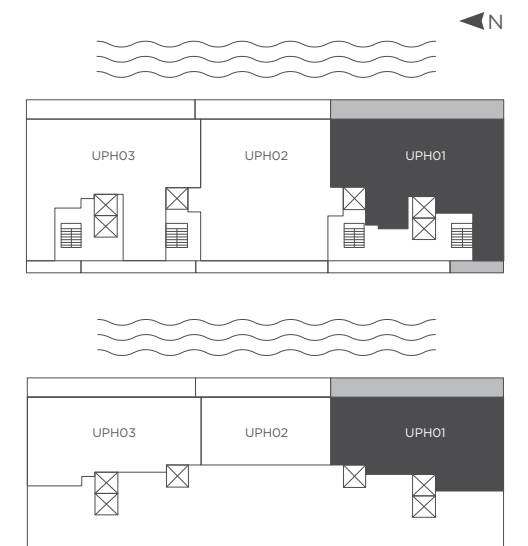
BY PIERO LISSONI

Upper Penthouse 01

Levels 53RD & 54TH

4 Bedrooms · 4.5 Baths
Roof Terrace

	SQ FT	M ²
Interior	3,315	308.0
Terrace	2,996	278.3
Total	6,311	586.3



Brickell
REALTY GROUP

2071 NW 112th Avenue, Miami, FL 33172

www.brickell-realty.com/OneParaiso.html

Oral representation cannot be relied upon as correctly stating representations of the developer. Pictures of homes and condos may not reflect the final products which may vary. Dimensions, specifications, improvements, rendering, plans, land uses, materials, amenities, prices, and availability are subject to change at the developer's discretion without notice.

Stated dimensions are approximate and measured to the exterior boundaries of the exterior walls and the centerline of interior demising walls which in fact vary from the dimensions that would be determined by using the description and definition of the "Unit" set forth in the Declaration (which generally only includes the interior airspace between the perimeter walls and excludes interior structural components).

ONE PARAISO

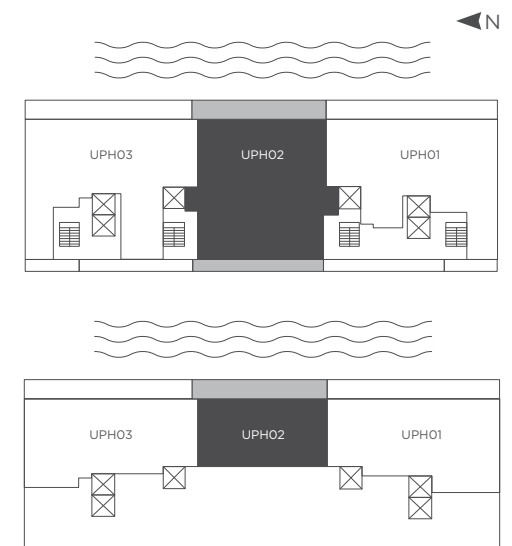
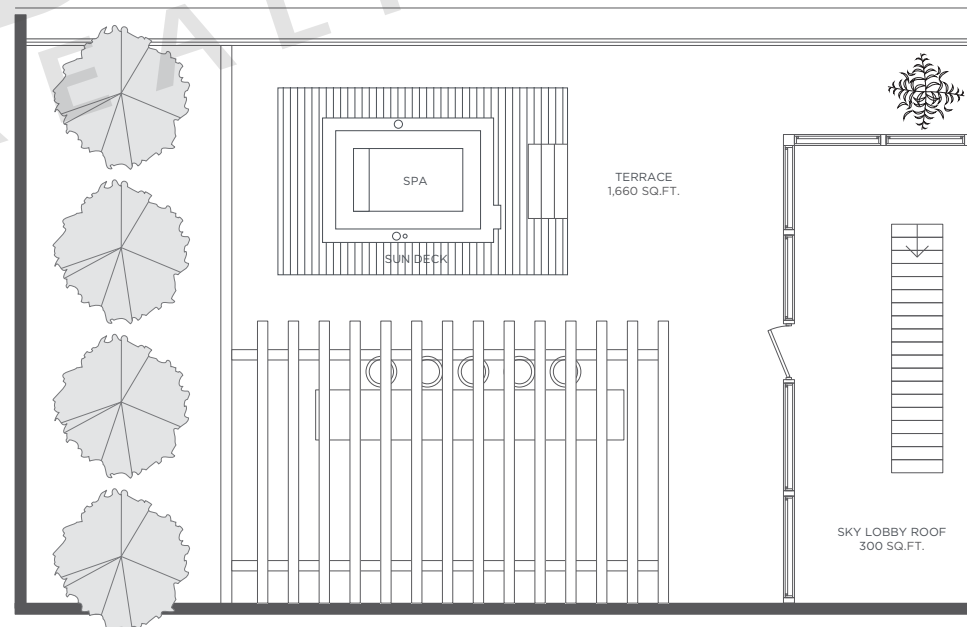
BY PIERO LISSONI

Upper Penthouse 02

Levels 53RD & 54TH

4 Bedrooms · 5.5 Baths
Exercise Room · Roof Terrace

	SQ FT	M ²
Interior	3,589	333.4
Terrace	2,376	220.7
Total	5,965	554.1



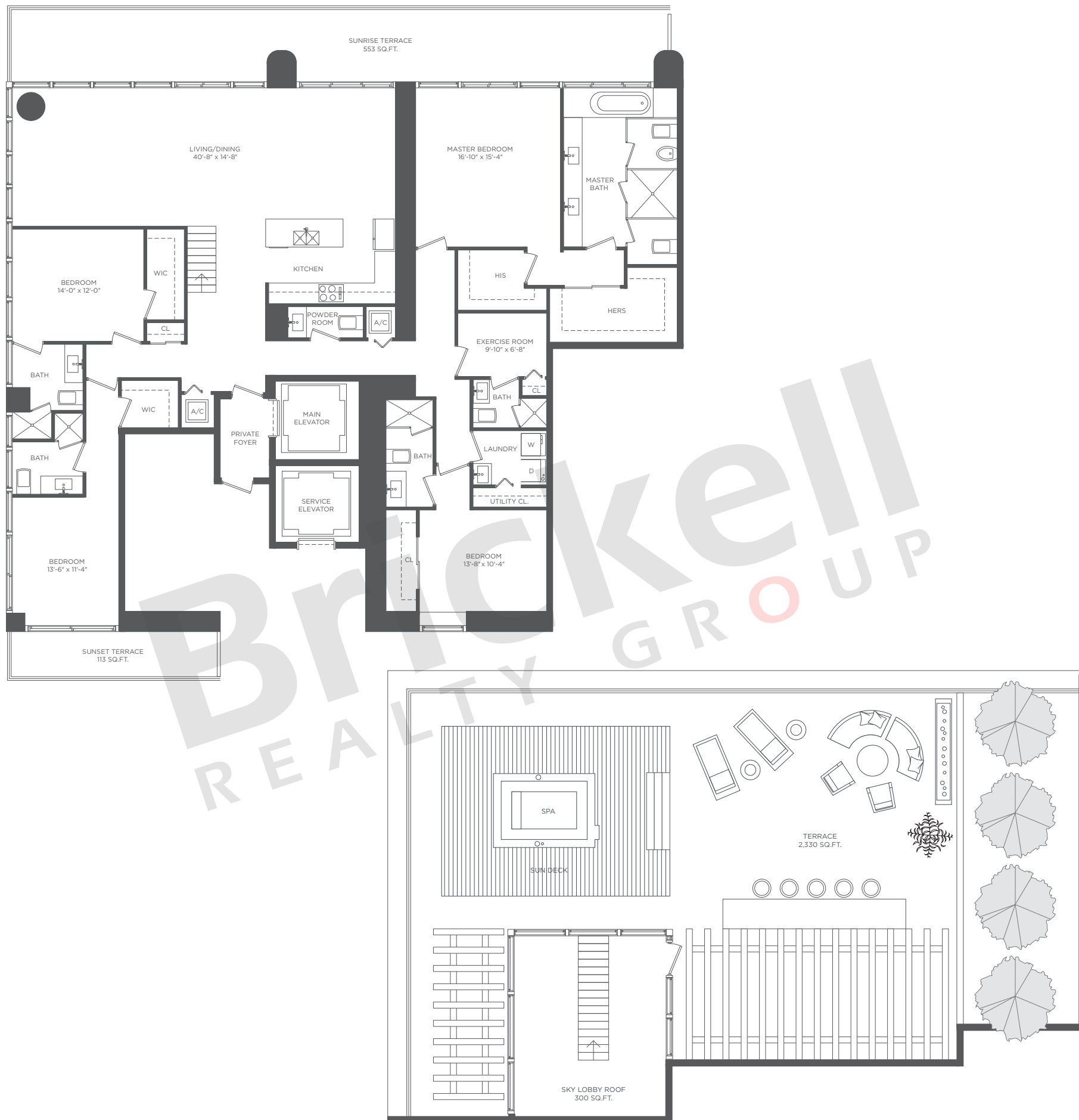
Brickell
REALTY GROUP

2071 NW 112th Avenue, Miami, FL 33172

www.brickell-realty.com/OneParaiso.html

Oral representation cannot be relied upon as correctly stating representations of the developer. Pictures of homes and condos may not reflect the final products which may vary. Dimensions, specifications, improvements, rendering, plans, land uses, materials, amenities, prices, and availability are subject to change at the developer's discretion without notice.

Stated dimensions are approximate and measured to the exterior boundaries of the exterior walls and the centerline of interior demising walls which in fact vary from the dimensions that would be determined by using the description and definition of the "Unit" set forth in the Declaration (which generally only includes the interior airspace between the perimeter walls and excludes interior structural components).



ONE PARAISO

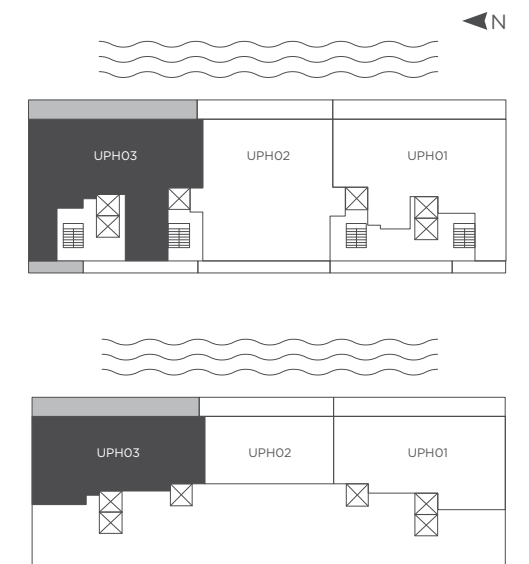
BY PIERO LISSONI

Upper Penthouse 03

Levels 53RD & 54TH

4 Bedrooms · 5.5 Baths
Exercise Room · Roof Terrace

	SQ FT	M ²
Interior	3,619	336.2
Terrace	2,996	278.3
Total	6,615	614.5



Brickell
REALTY GROUP

2071 NW 112th Avenue, Miami, FL 33172

www.brickell-realty.com/OneParaiso.html

Oral representation cannot be relied upon as correctly stating representations of the developer. Pictures of homes and condos may not reflect the final products which may vary. Dimensions, specifications, improvements, rendering, plans, land uses, materials, amenities, prices, and availability are subject to change at the developer's discretion without notice.

Stated dimensions are approximate and measured to the exterior boundaries of the exterior walls and the centerline of interior demising walls which in fact vary from the dimensions that would be determined by using the description and definition of the "Unit" set forth in the Declaration (which generally only includes the interior airspace between the perimeter walls and excludes interior structural components).