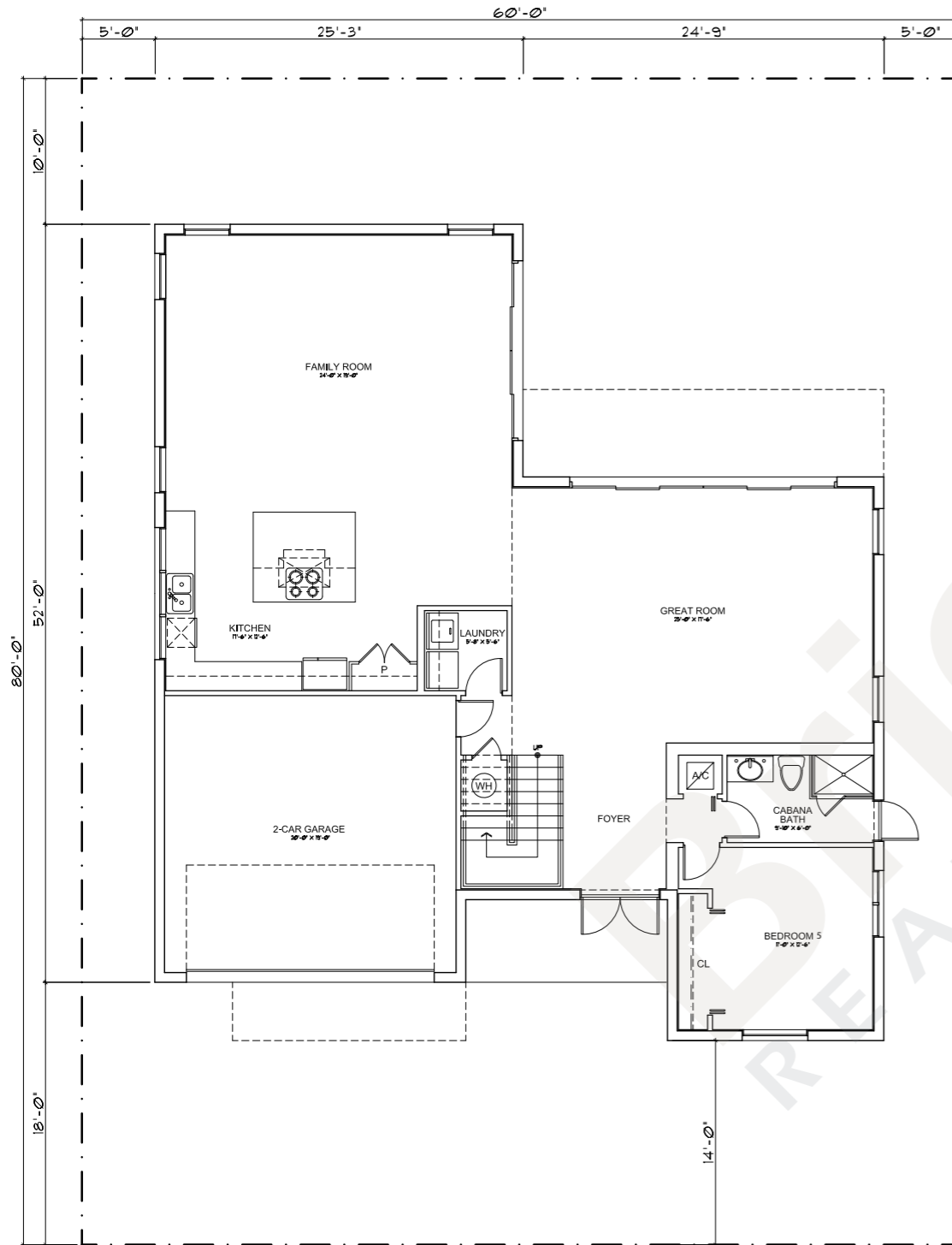
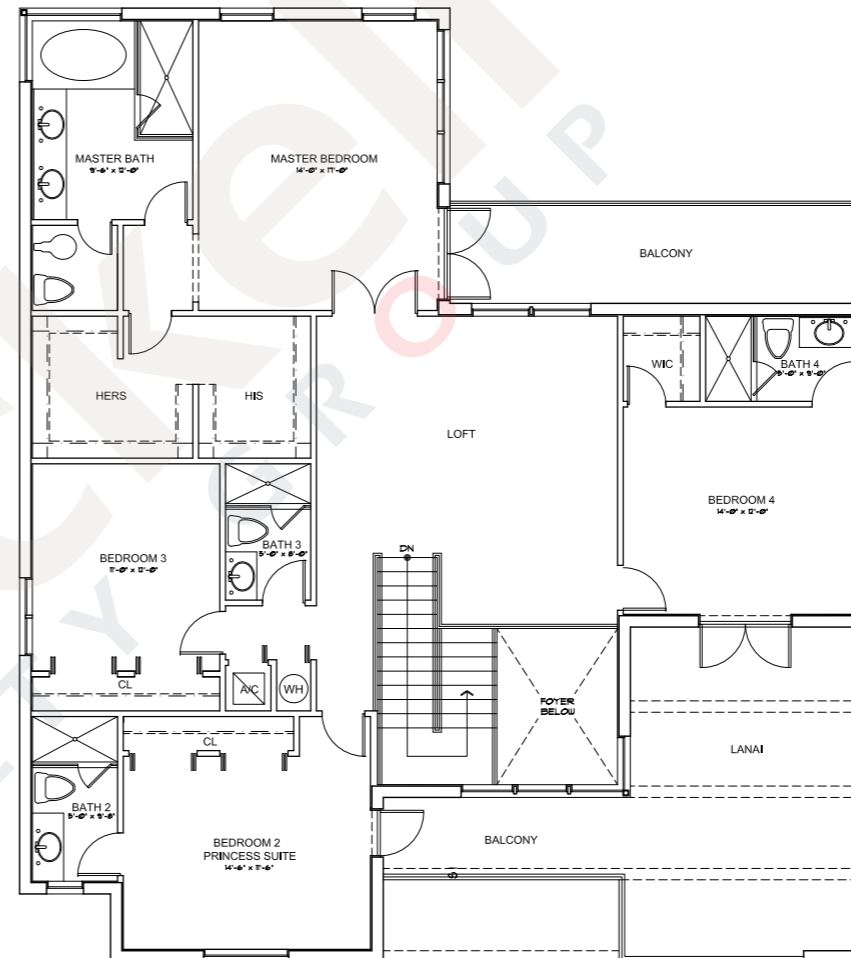


Model 60A Loft

2-Story - 5 Bedrooms - 5 Baths - Family Room - 2 x Balconies
2-Car Garage - 2nd Floor Loft - 60' x 80' Lot size



1st Floor



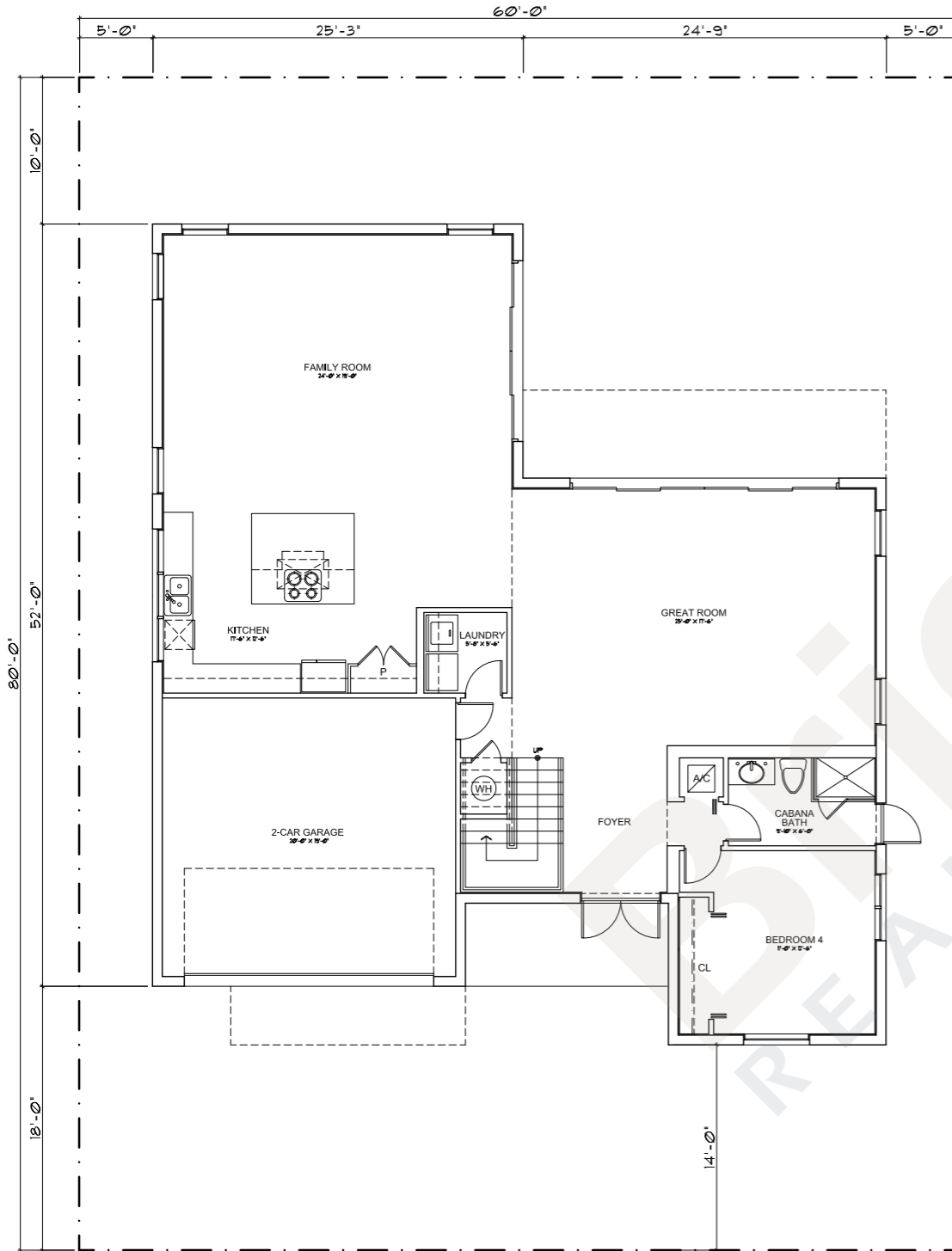
2nd Floor



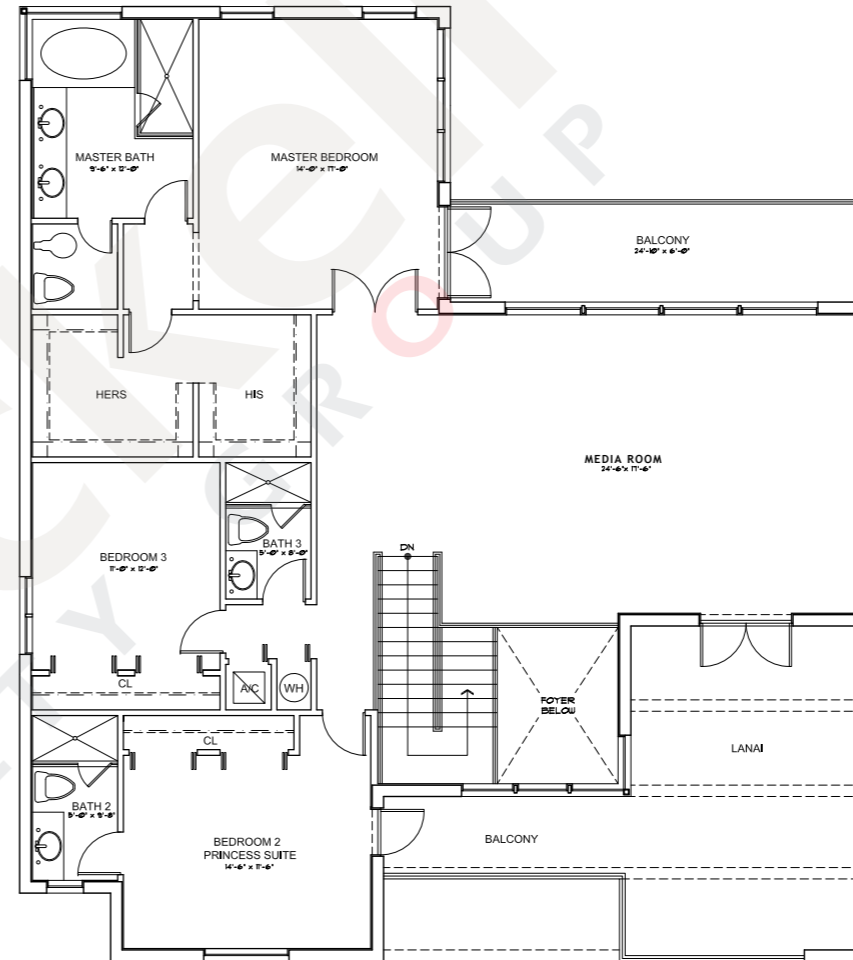
	sq ft	m ²
1 st Floor A/C	1,730	160.7
2 nd Floor A/C	1,853	172.2
Total A/C	3,583	332.9
1 st Floor non A/C	420	39.0
2 nd Floor non A/C	500	46.4
Total	4,503	418.3

Model 60A Media Room

2-Story - 4 Bedrooms - 4 Baths - Family Room - 2 x Balconies
2-Car Garage - 2nd floor Extended Loft - 60' x 80' Lot size



1st Floor



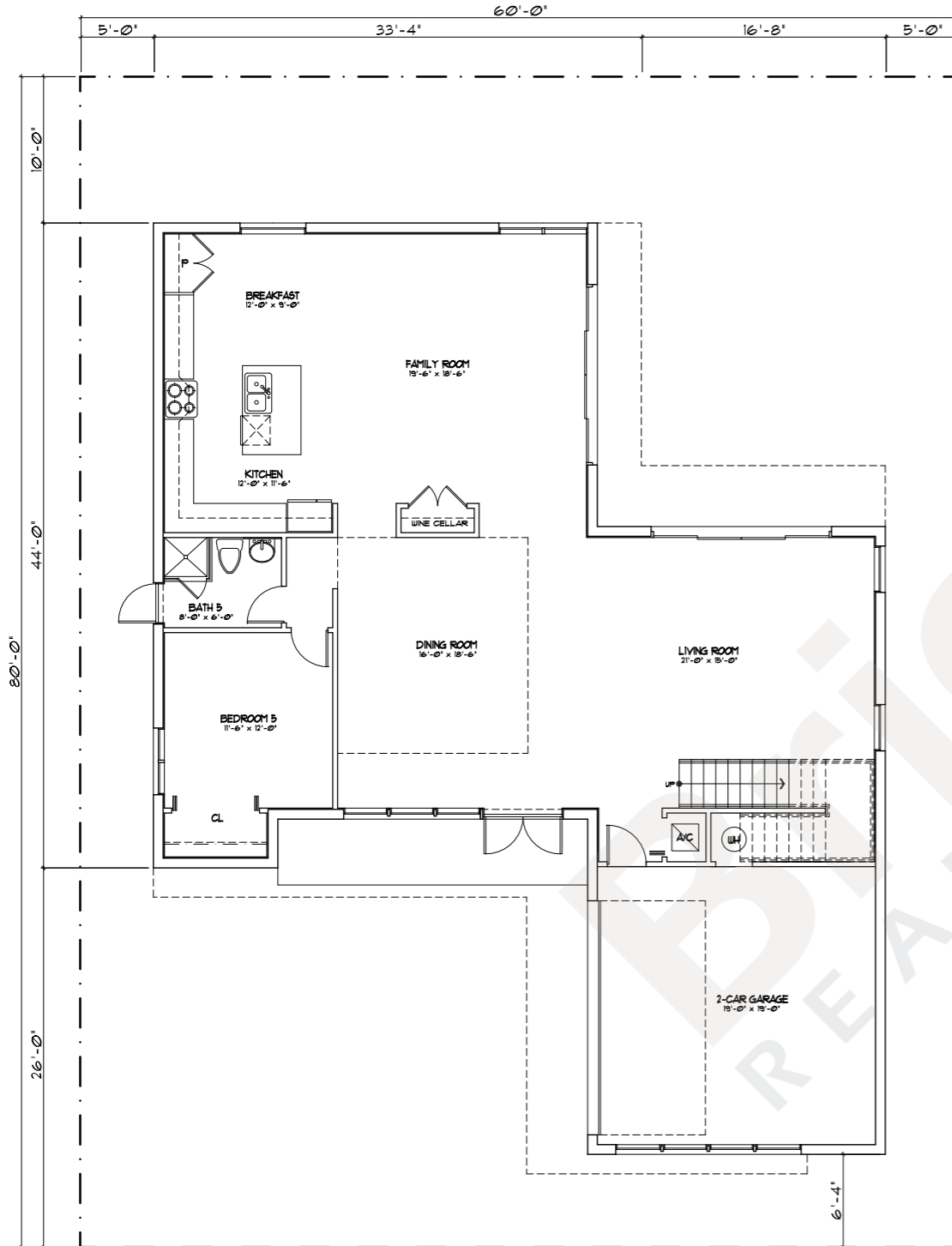
2nd Floor



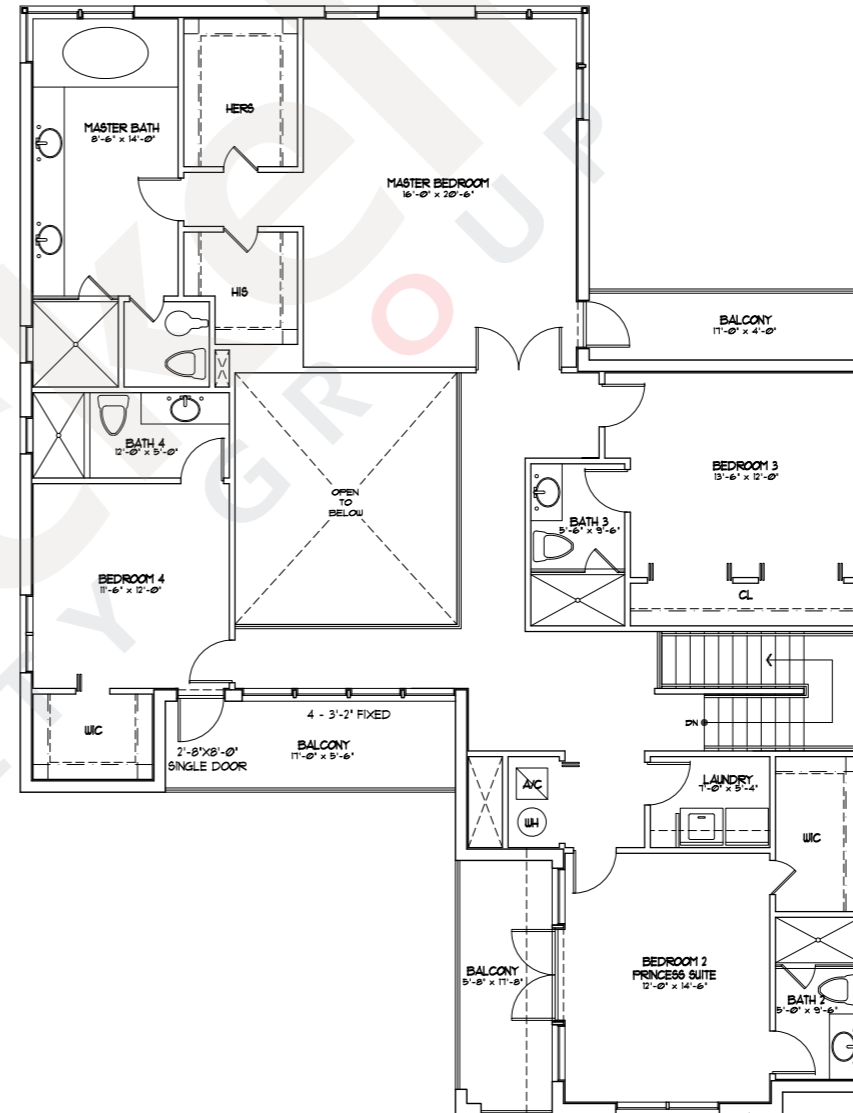
	sq ft	m ²
1 st Floor A/C	1,730	160.7
2 nd Floor A/C	1,853	172.2
Total A/C	3,583	332.9
1 st Floor non A/C	420	39.0
2 nd Floor non A/C	500	46.4
Total	4,503	418.3

Model 60B

2-Story - 5 Bedrooms - 5 Baths - Family Room
3 x Balconies - 2-Car Garage - 60' x 80' Lot size



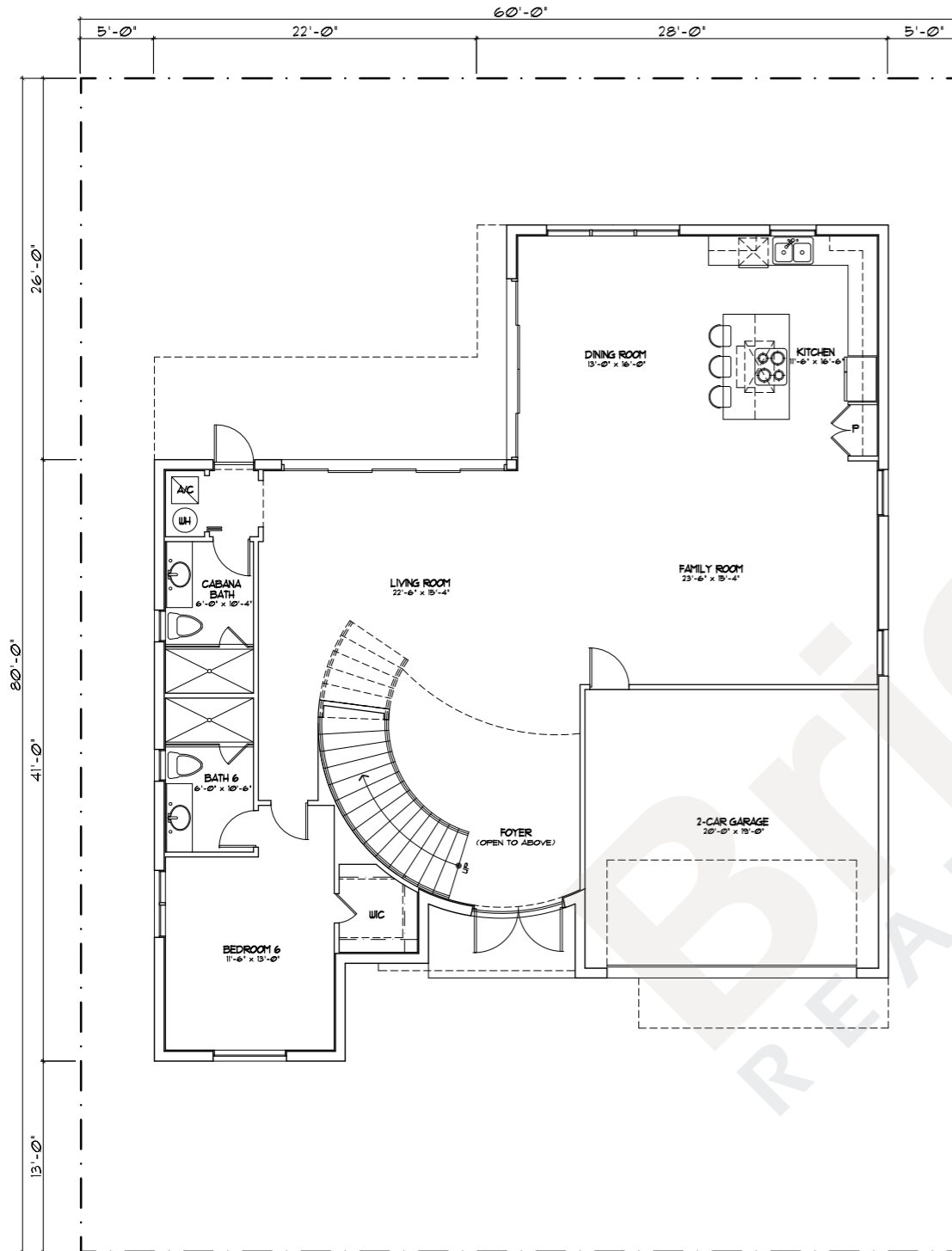
1st Floor



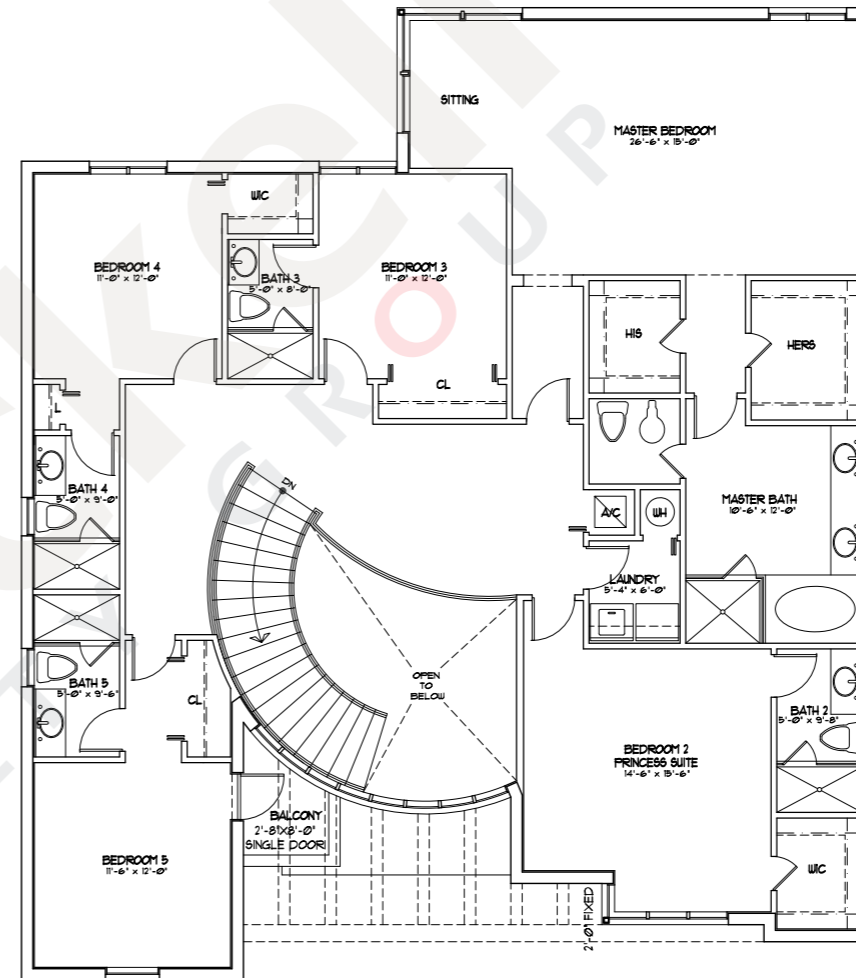
2nd Floor



	sq ft	m ²
1 st Floor A/C	1,717	159.5
2 nd Floor A/C	2,047	190.1
Total A/C	3,764	349.7
1 st Floor non A/C	406	37.7
2 nd Floor non A/C	244	22.7
Total	4,414	410.1



1st Floor



2nd Floor



	sq ft	m ²
1 st Floor A/C	1,785	165.8
2 nd Floor A/C	2,262	210.1
Total A/C	4,047	376.0
1 st Floor non A/C	420	39.0
2 nd Floor non A/C	33	3.1
Total	4,500	418.1