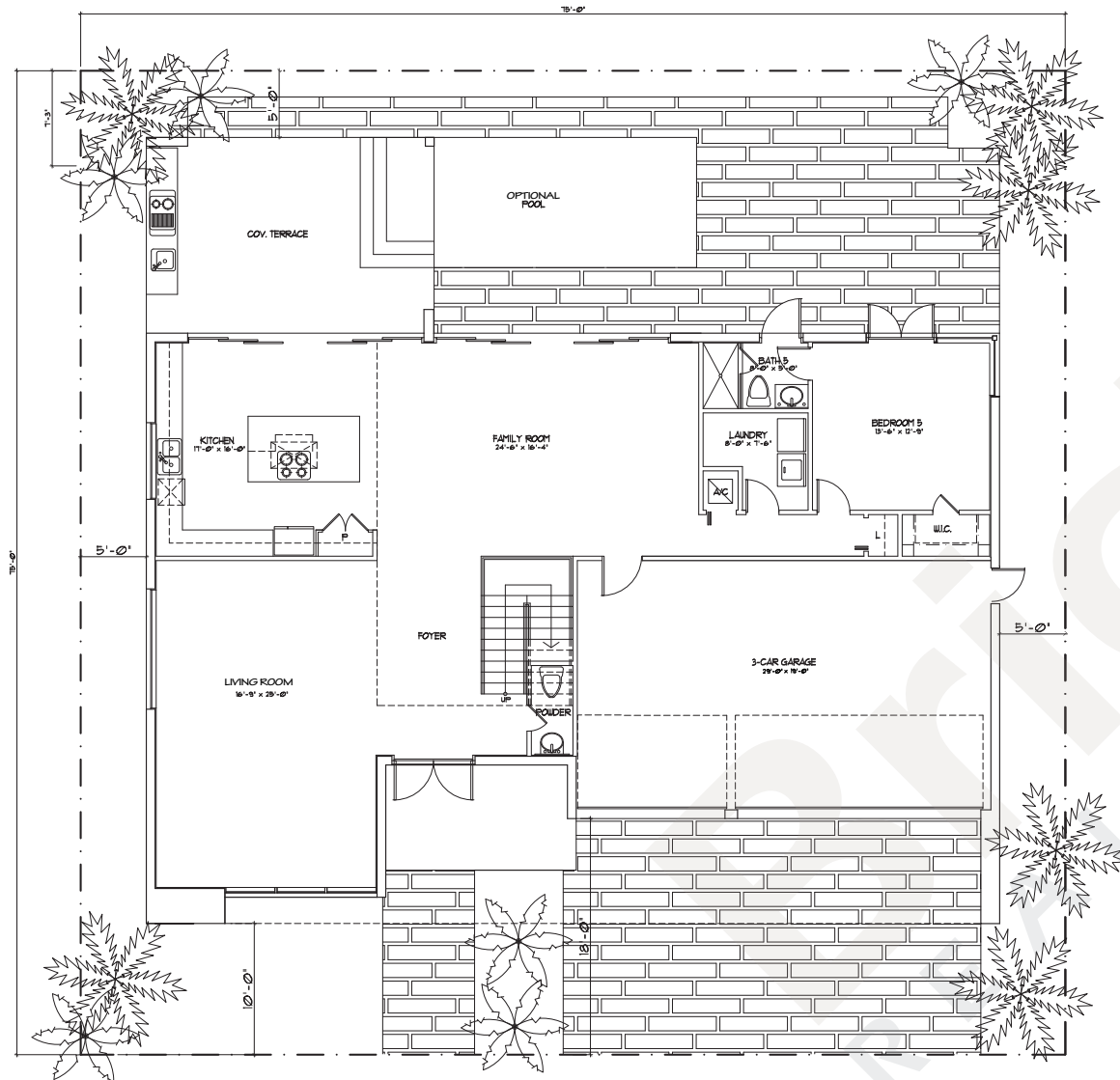
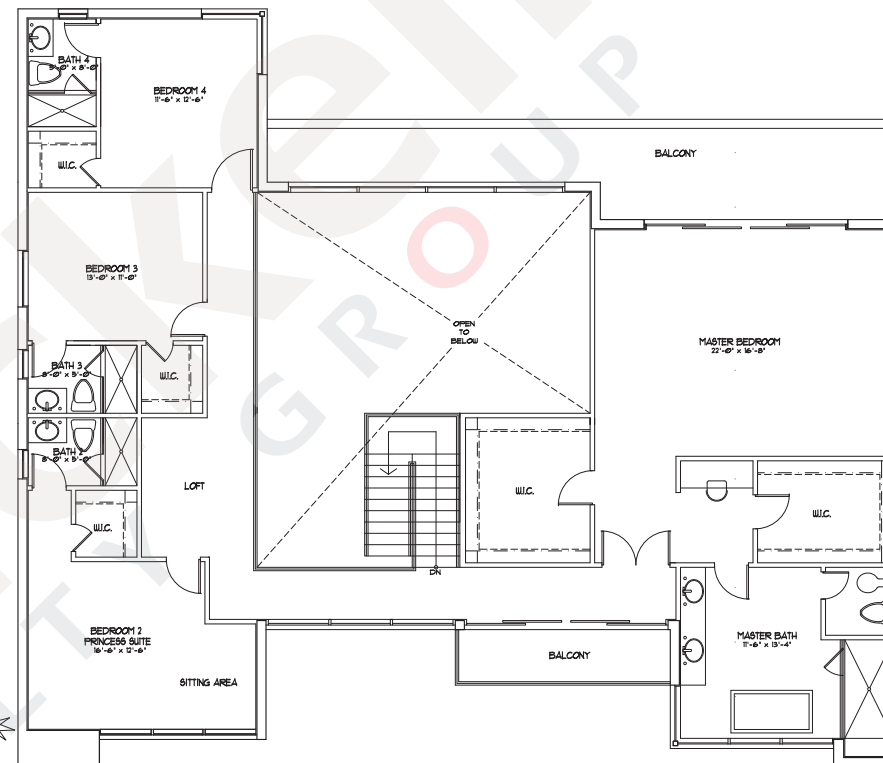


Model 75A

2-Story - 5 Bedrooms - 5.5 Baths - Family Room
2 x Balcony - 3-Car Garage - 75' x 75' Lot size



1st Floor



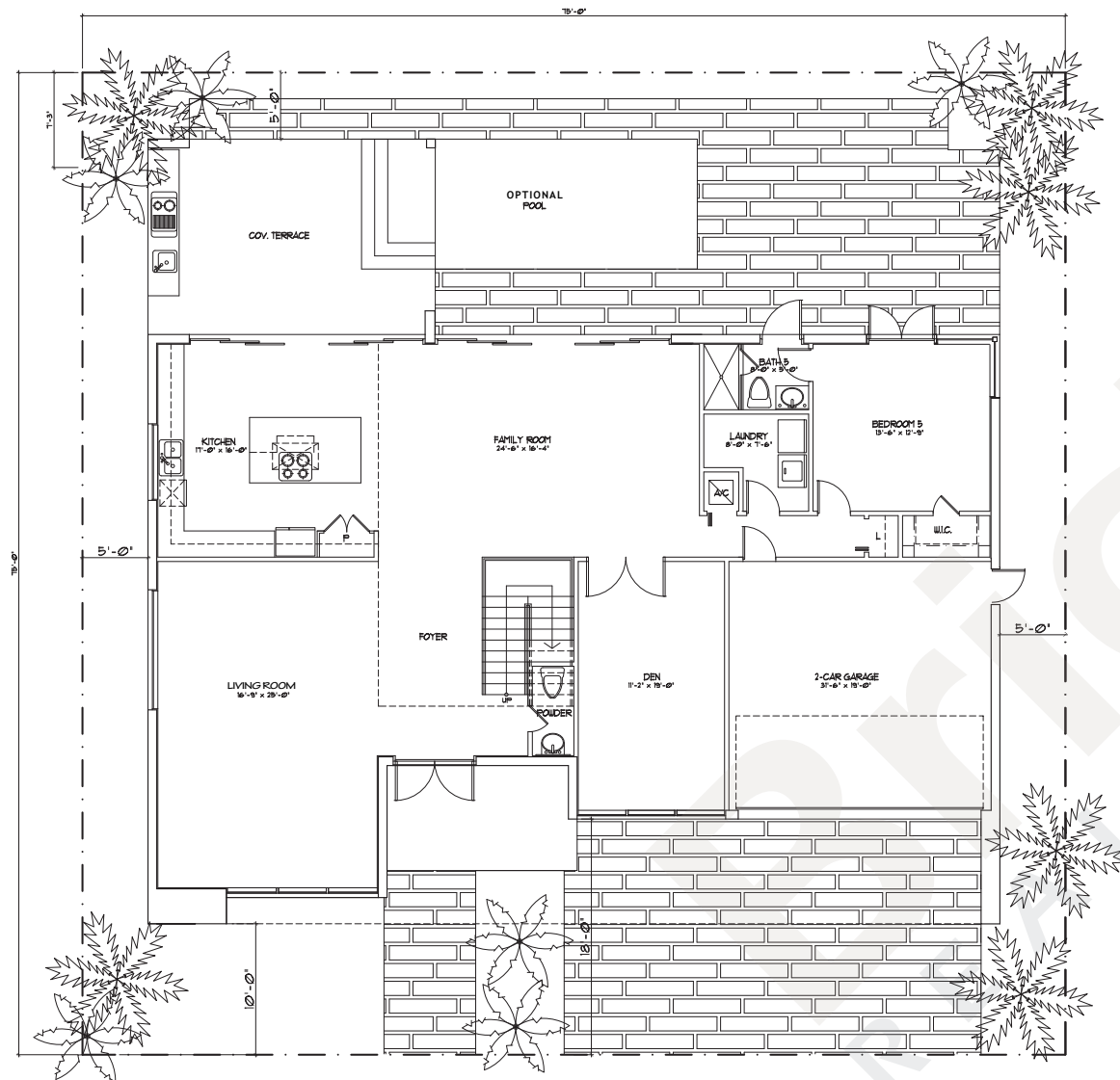
2nd Floor



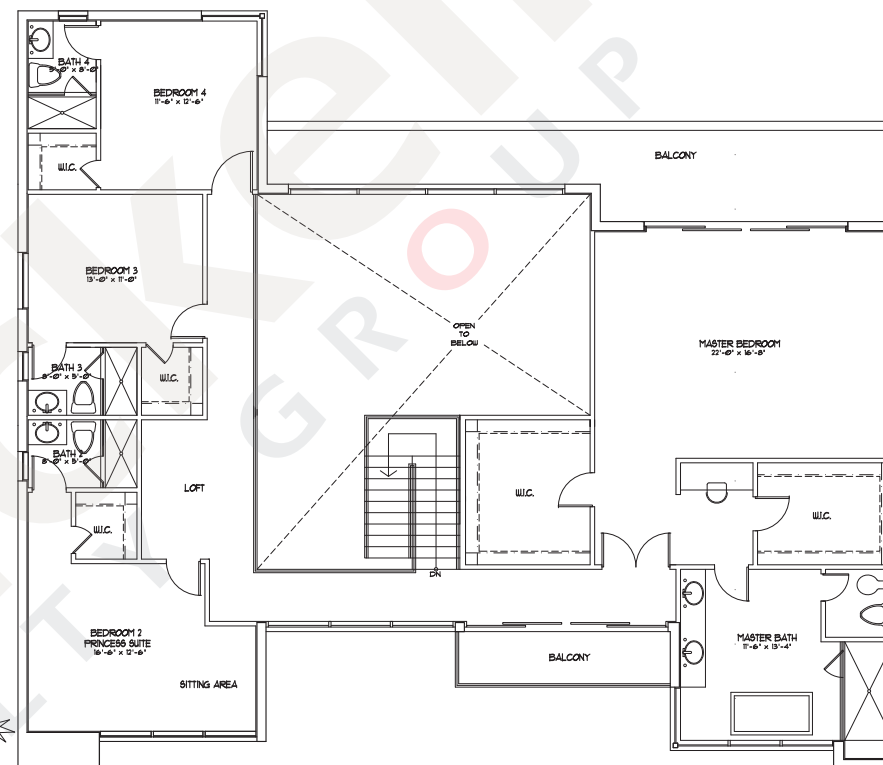
	sq ft	m ²
1 st Floor A/C	1,804	167.6
2 nd Floor A/C	2,135	198.3
Total A/C	3,939	365.9
1 st Floor Non A/C	652	60.6
2 nd Floor Non A/C	342	31.8
Total	4,933	458.3

Model 75A Den

2-Story - 5 Bedrooms - 5.5 Baths - Family Room
2 x Balcony - Den - 2-Car Garage - 75' x 75' Lot size



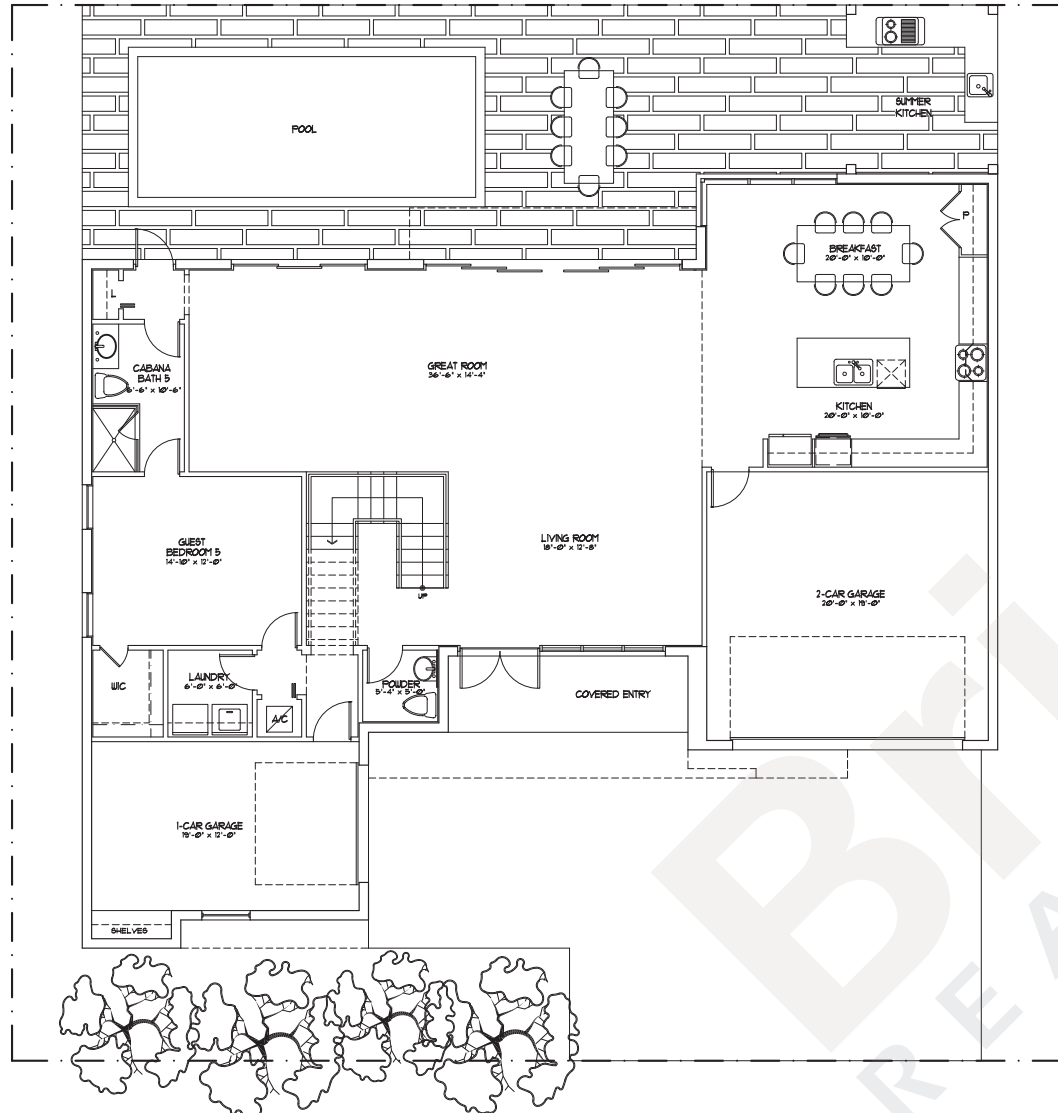
1st Floor



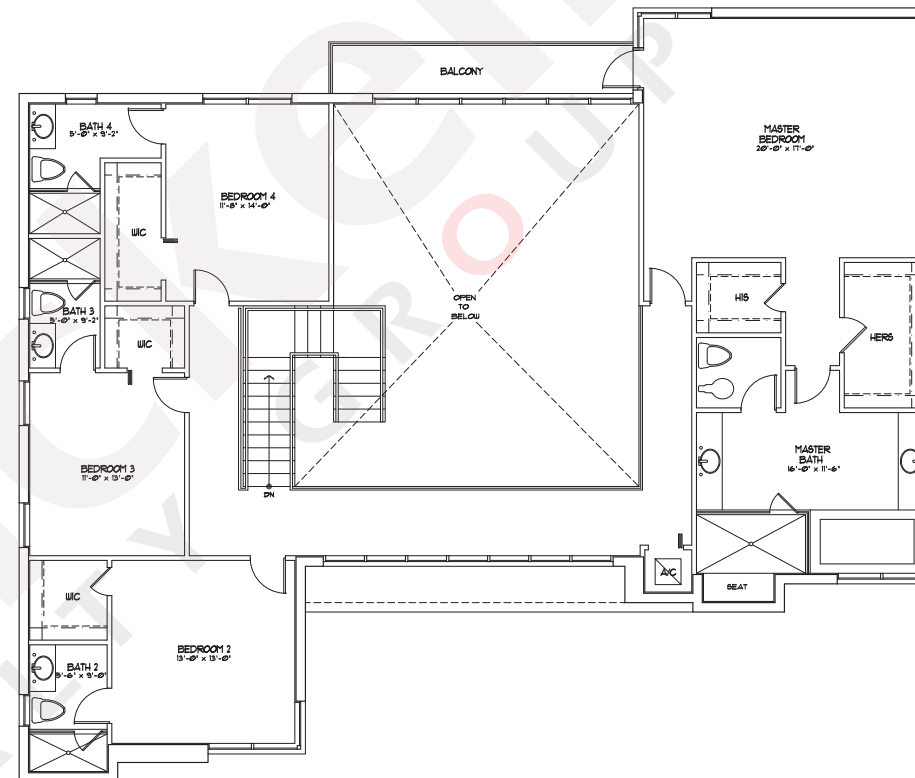
2nd Floor



	sq ft	m ²
1 st Floor A/C	2,044	189.9
2 nd Floor A/C	2,135	198.3
Total A/C	4,179	388.2
1 st Floor Non A/C	412	38.3
2 nd Floor Non A/C	342	31.8
Total	4,933	458.3



1st Floor



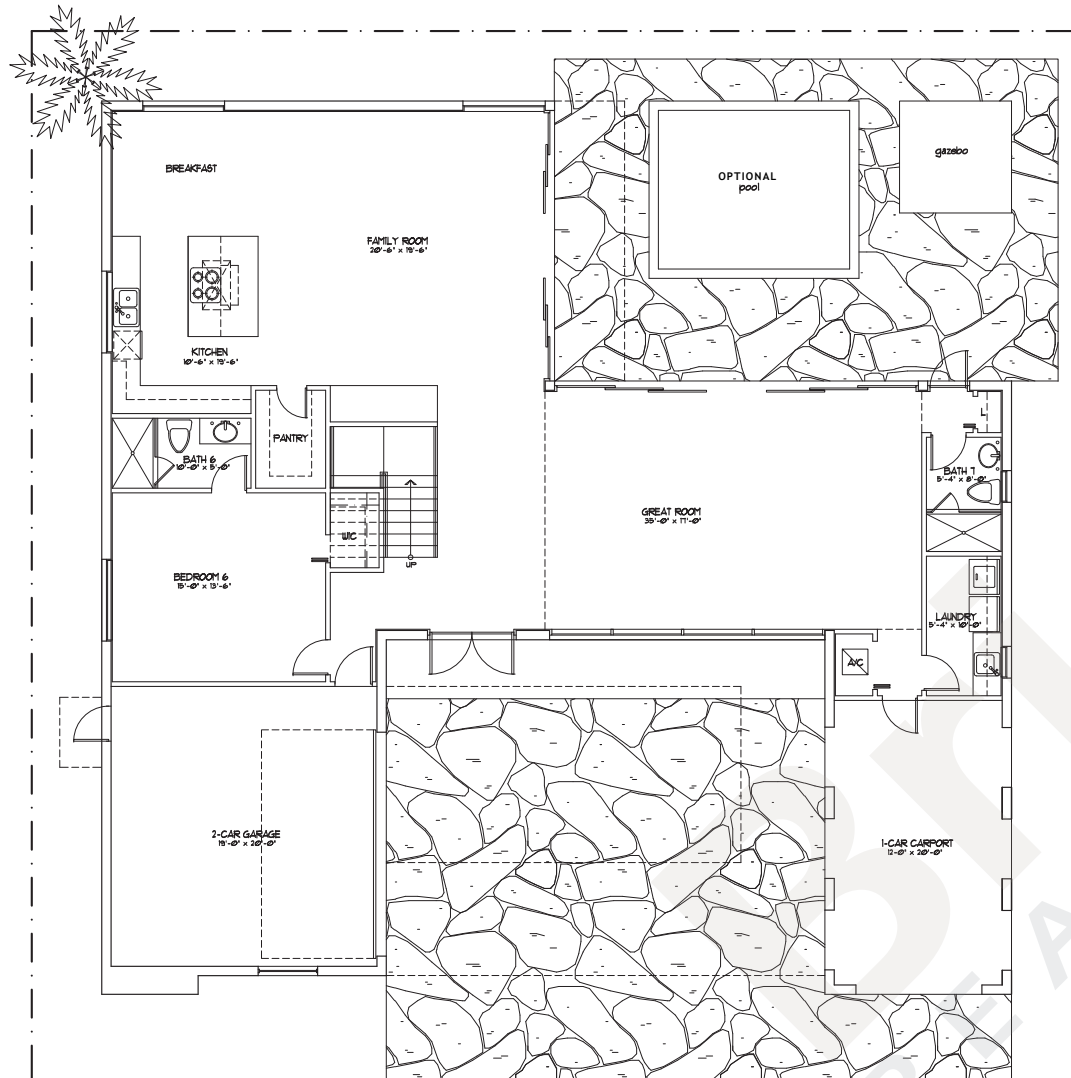
2nd Floor



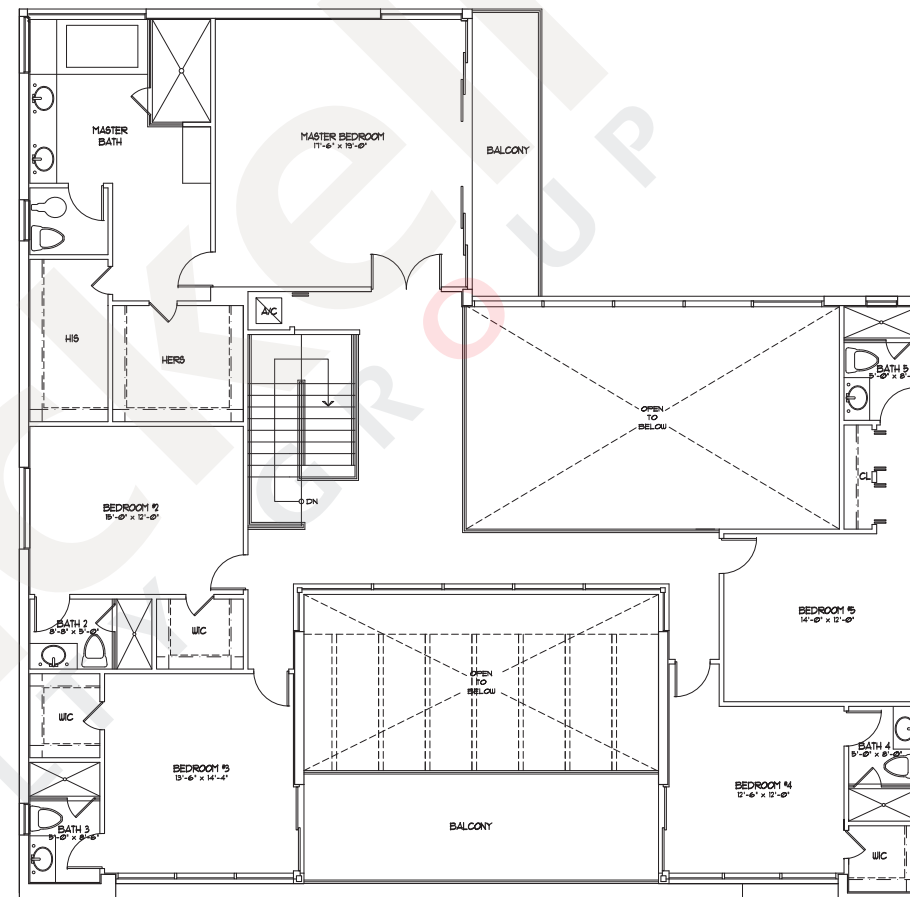
	sq ft	m ²
1 st Floor A/C	1,827	169.7
2 nd Floor A/C	2,086	193.8
Total A/C	3,913	363.5
1 st Floor non A/C	700	65.0
2 nd Floor non A/C	80	7.4
Total	4,693	436.0

Model 75C

2-Story - 6 Bedrooms - 7 Baths - Family Room - 2 x Balconies
2-Car Garage - Car Port - 75' x 75' Lot size



1st Floor



2nd Floor



	sq ft	m ²
1 st Floor A/C	1,967	182.7
2 nd Floor A/C	2,443	227.0
Total A/C	4,410	409.7
1 st Floor non A/C	708	65.8
2 nd Floor non A/C	307	28.5
Total	5,425	504.0