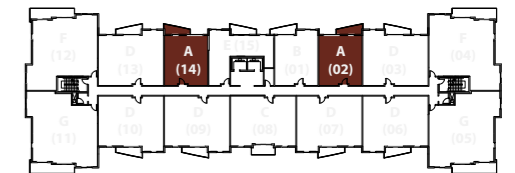
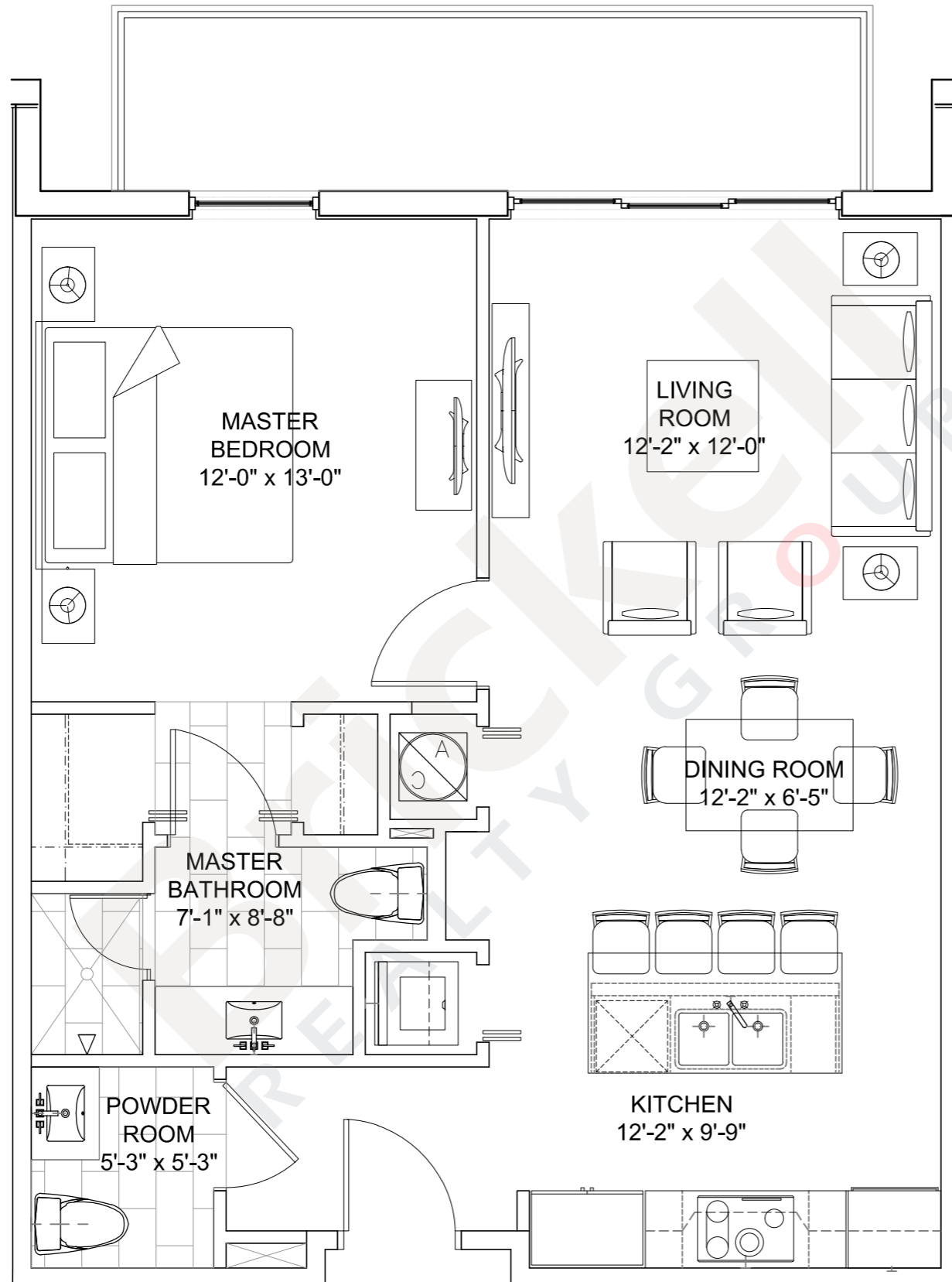




**Building 4  
Residence A**

1 BEDROOM - 1.5 BATHS

	SQ FT	M <sup>2</sup>
Interior	733	68.1
Balcony/Terrace	103	9.6
<b>Total</b>	<b>833</b>	<b>77.4</b>

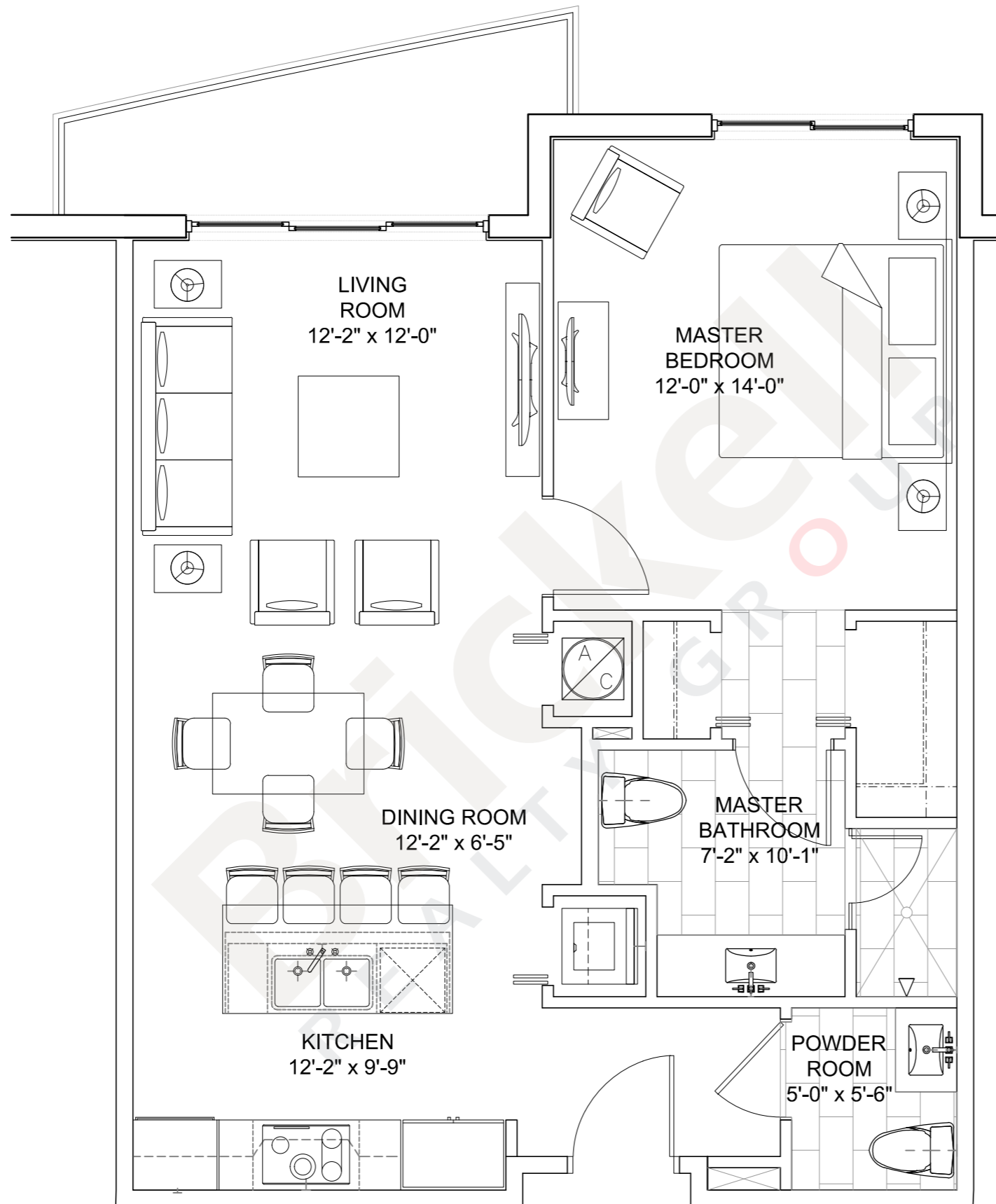


**Brickell**  
REALTY GROUP

2071 NW 112th Avenue, Miami, FL 33172

[www.brickell-realty.com/MidtownDoral4.html](http://www.brickell-realty.com/MidtownDoral4.html)

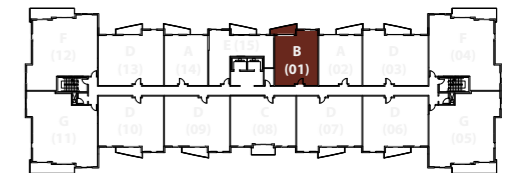
Stated dimensions are measured to the exterior boundaries of the exterior walls and the centerline of interior demising walls and in fact vary from the dimensions that would be determined by using the description and definition of the "Unit" set forth in the Declaration (which generally only includes the interior airspace between the perimeter walls and excludes interior structural components). For your reference, the area of the Unit, determined in accordance with those defined unit boundaries, is 985 to 1,242 sq. ft on Residences A, B and C and 1,331 to 1,894 sq. ft on Residences D, E and F. Note that measurements of rooms set forth on this floor plan are generally taken at the greatest points of each given room (as if the room were a perfect rectangle), without regard for any cutouts. Accordingly, the area of the actual room will typically be smaller than the product obtained by multiplying the stated length times width. All dimensions are approximate and may vary with actual construction, and all floor plans and development plans are subject to change. Oral representation cannot be relied upon as correctly stating representations of the developer.



**Building 4  
Residence B**

1 BEDROOM - 1.5 BATHS

	SQ FT	M <sup>2</sup>
Interior	771	71.6
Balcony/Terrace	68	6.3
<b>Total</b>	<b>839</b>	<b>77.9</b>



**Brickell**  
REALTY GROUP

2071 NW 112th Avenue, Miami, FL 33172

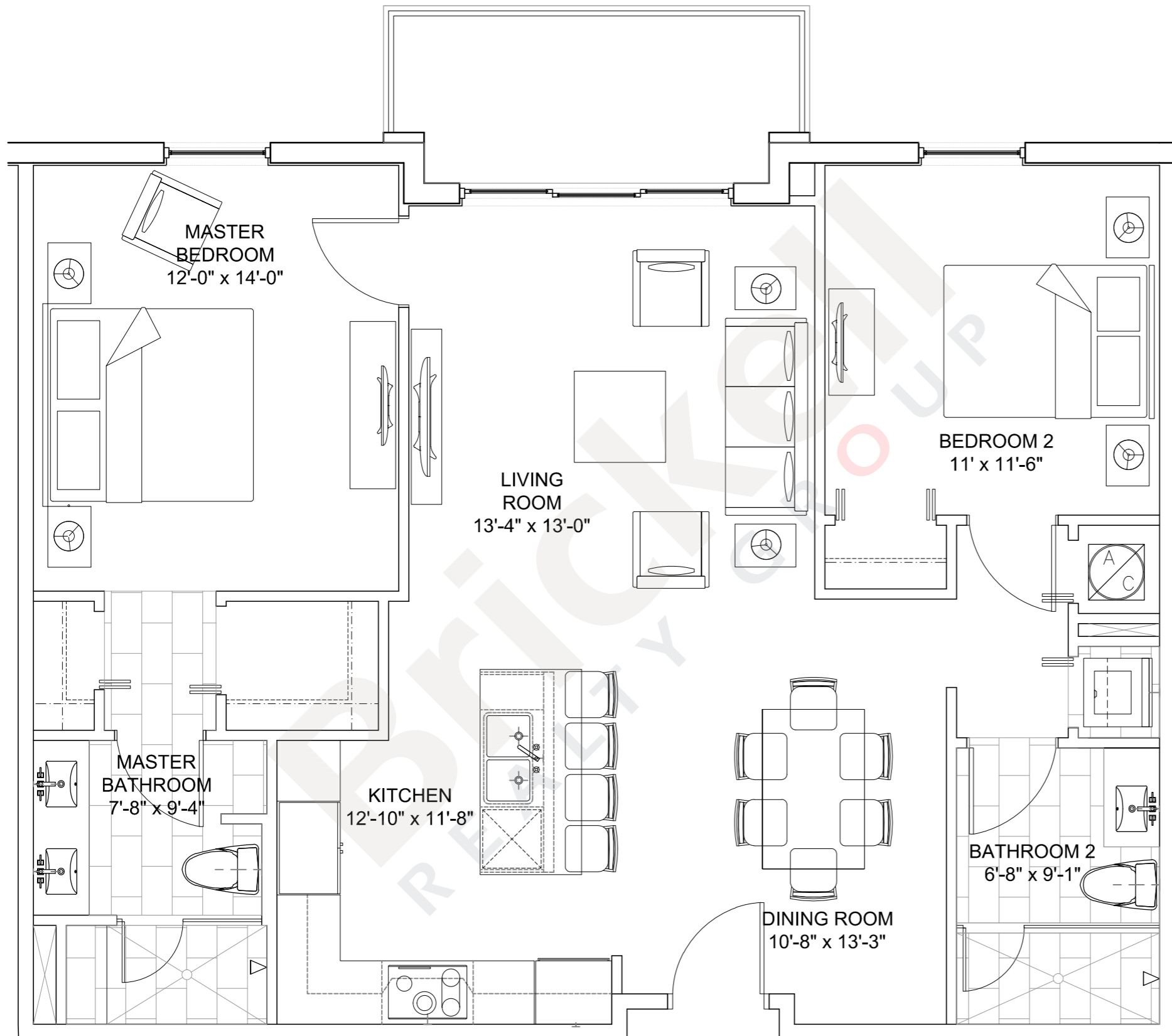
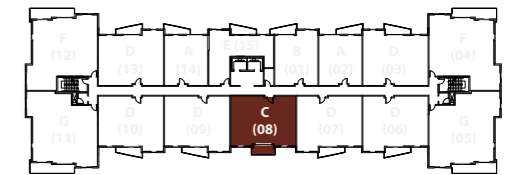
[www.brickell-realty.com/MidtownDoral4.html](http://www.brickell-realty.com/MidtownDoral4.html)

Stated dimensions are measured to the exterior boundaries of the exterior walls and the centerline of interior demising walls and in fact vary from the dimensions that would be determined by using the description and definition of the "Unit" set forth in the Declaration (which generally only includes the interior airspace between the perimeter walls and excludes interior structural components). For your reference, the area of the Unit, determined in accordance with those defined unit boundaries, is 985 to 1,242 sq. ft on Residences A, B and C and 1,331 to 1,894 sq. ft on Residences D, E and F. Note that measurements of rooms set forth on this floor plan are generally taken at the greatest points of each given room (as if the room were a perfect rectangle), without regard for any cutouts. Accordingly, the area of the actual room will typically be smaller than the product obtained by multiplying the stated length times width. All dimensions are approximate and may vary with actual construction, and all floor plans and development plans are subject to change. Oral representation cannot be relied upon as correctly stating representations of the developer.

**Building 4  
Residence C**

2 BEDROOM - 2 BATHS

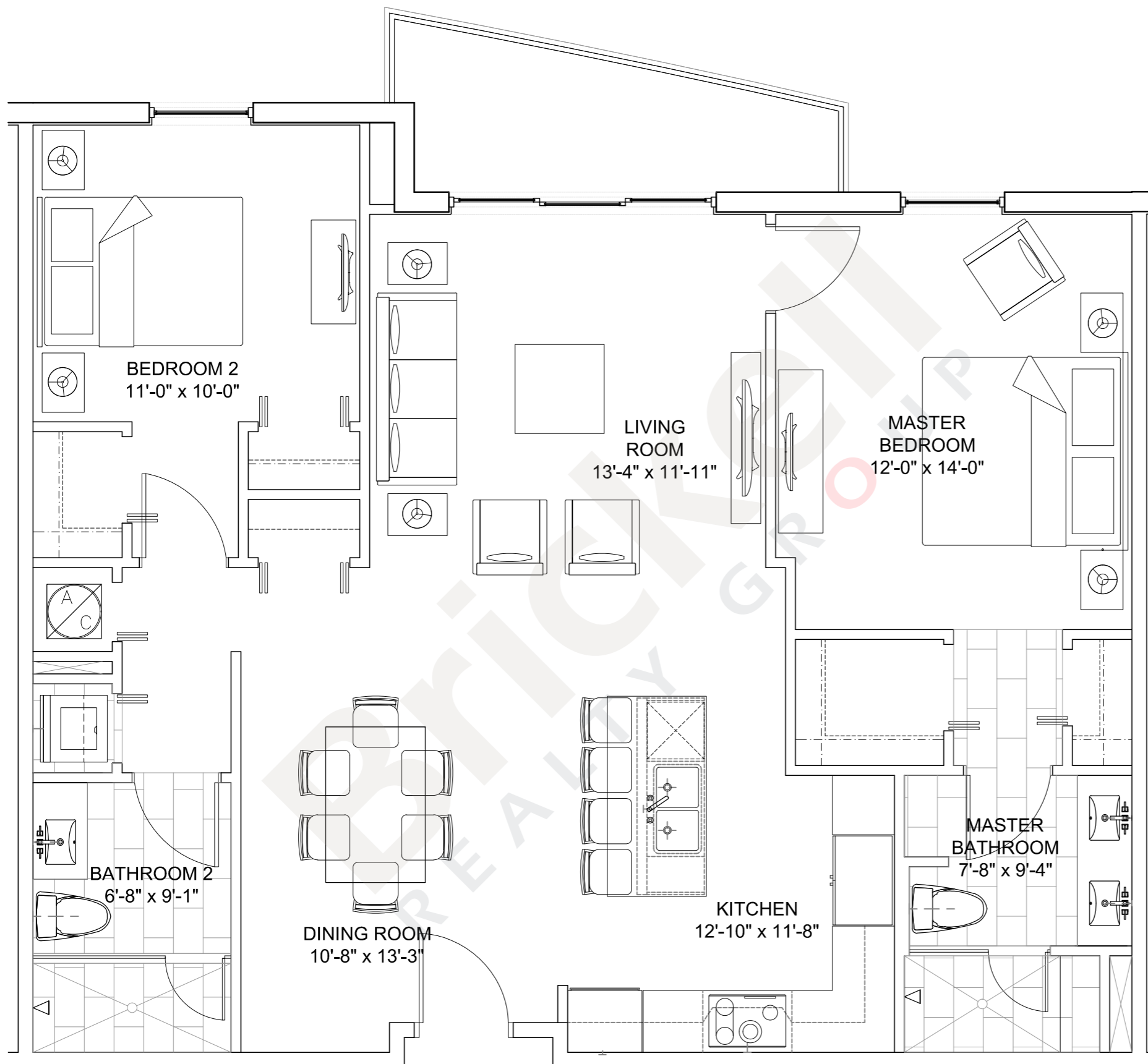
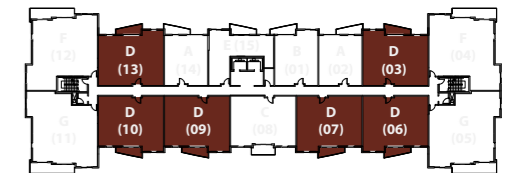
	SQ FT	M <sup>2</sup>
Interior	1,086	100.9
Balcony/Terrace	78	7.2
<b>Total</b>	<b>1,164</b>	<b>108.1</b>



**Building 4  
Residence D**

2 BEDROOMS - 2 BATHS

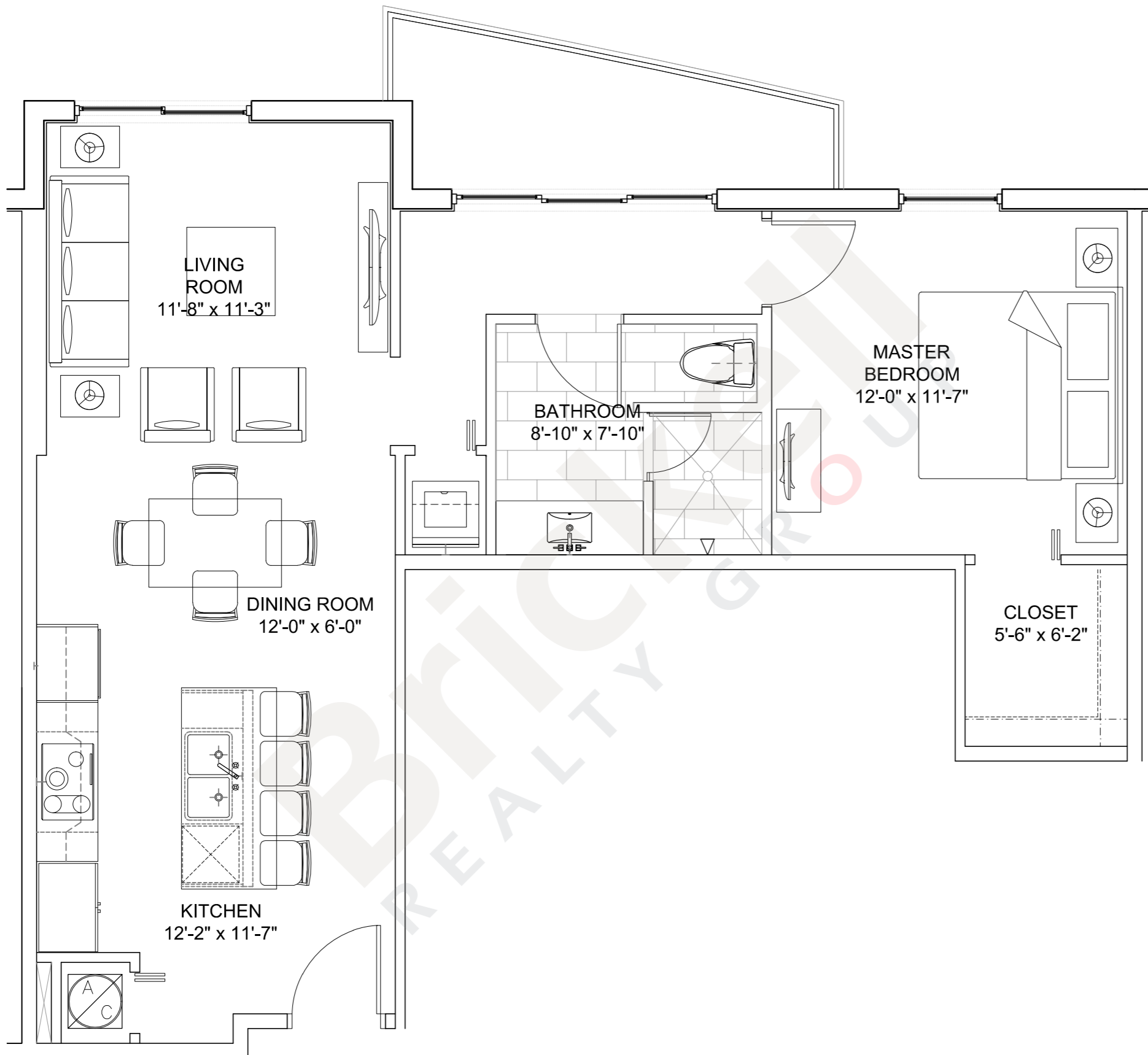
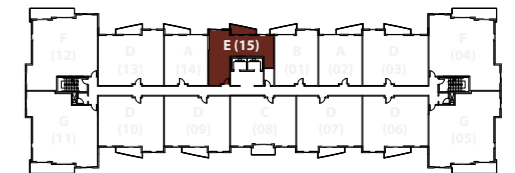
	SQ FT	M <sup>2</sup>
Interior	1,140	105.9
Balcony/Terrace	77	7.2
<b>Total</b>	<b>1,217</b>	<b>113.1</b>



**Building 4  
Residence E**

1 BEDROOM - 1 BATH

	SQ FT	M <sup>2</sup>
Interior	767	71.3
Balcony/Terrace	77	7.2
<b>Total</b>	<b>844</b>	<b>78.4</b>

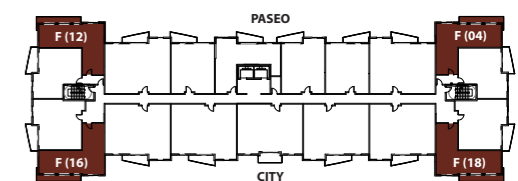




**Building 4  
Residence F**

1 BEDROOM - 1 BATH

	SQ FT	M <sup>2</sup>
Interior	668	62.1
Balcony L-2 (PASEO)	85	7.9
Balcony L-2 (CITY)	93	8.6
Balcony L-3	106	9.8
Balcony L-4	119	11.1
Balcony L-5	132	12.3
Balcony L-6	146	13.6
Balcony L-7	160	14.9
Balcony L-8	176	16.4
<b>Total L-2 (PASEO)</b>	<b>753</b>	<b>70.0</b>
<b>Total L-2 (CITY)</b>	<b>761</b>	<b>70.7</b>
<b>Total L-3</b>	<b>774</b>	<b>71.9</b>
<b>Total L-4</b>	<b>787</b>	<b>73.1</b>
<b>Total L-5</b>	<b>800</b>	<b>74.3</b>
<b>Total L-6</b>	<b>814</b>	<b>75.6</b>
<b>Total L-7</b>	<b>828</b>	<b>76.9</b>
<b>Total L-8</b>	<b>844</b>	<b>78.4</b>

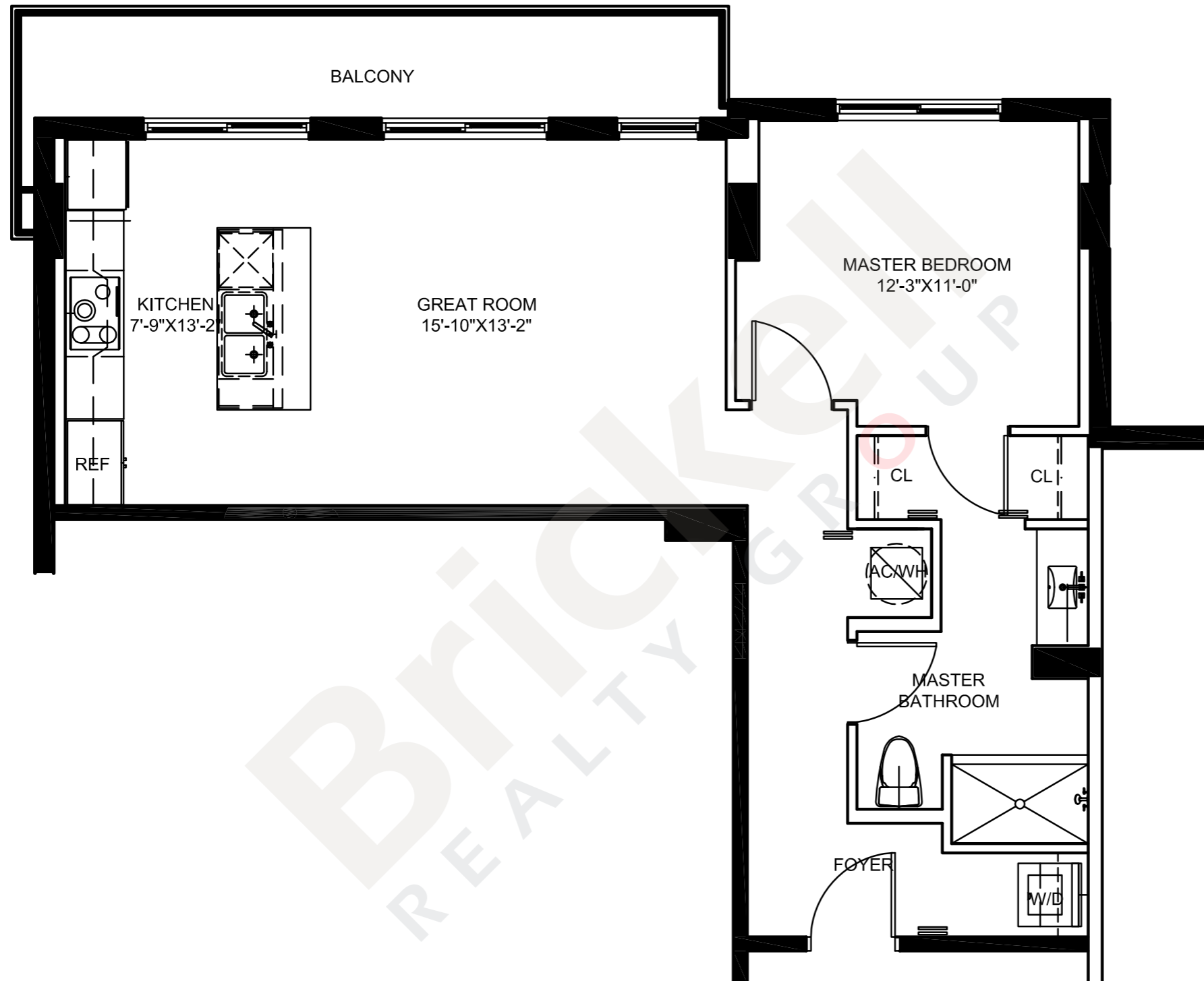


**Brickell  
REALTY GROUP**

2071 NW 112th Avenue, Miami, FL 33172

[www.brickell-realty.com/MidtownDoral4.html](http://www.brickell-realty.com/MidtownDoral4.html)

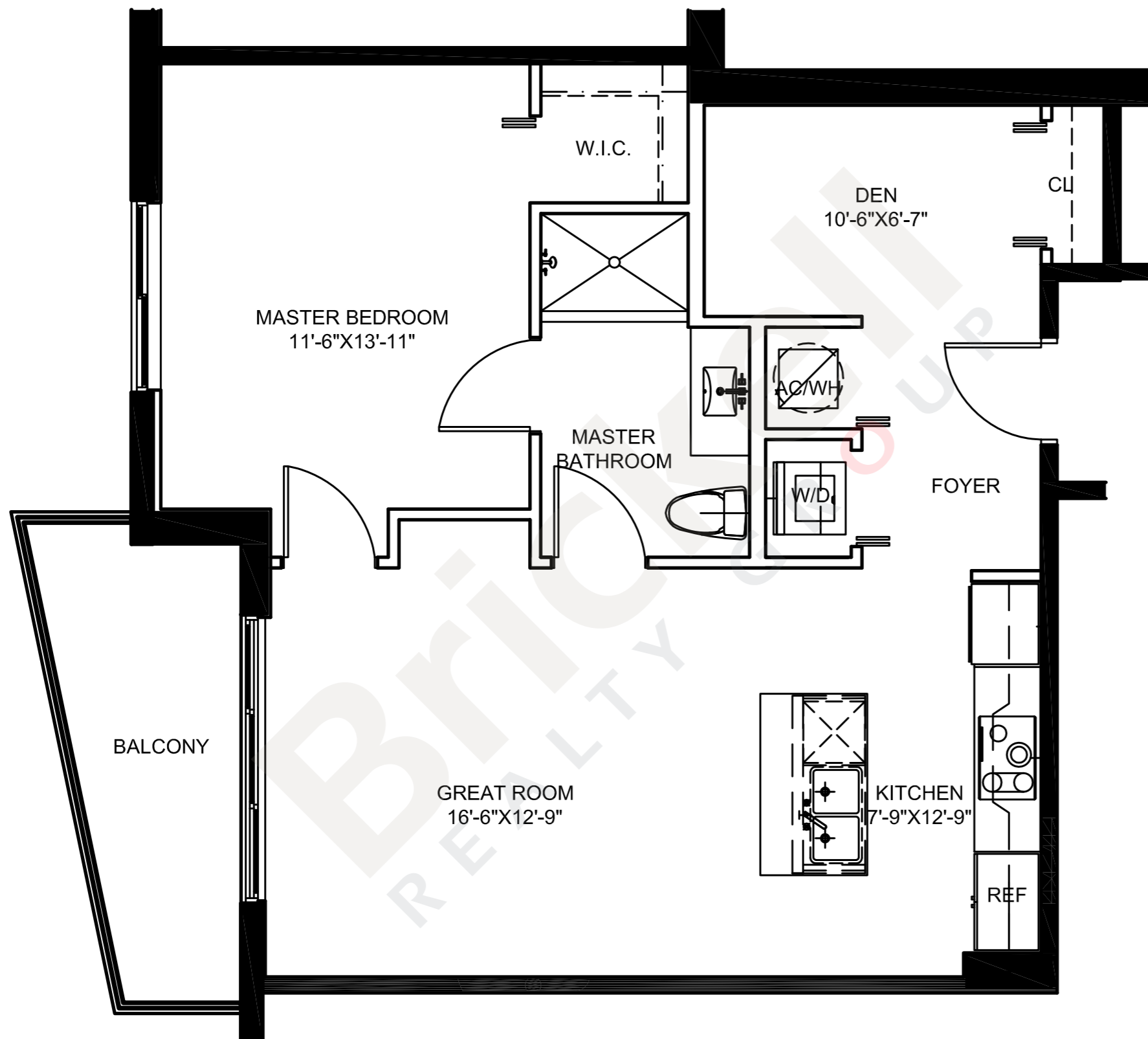
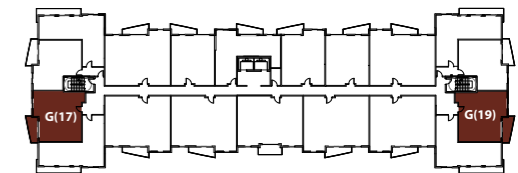
Stated dimensions are measured to the exterior boundaries of the exterior walls and the centerline of interior demising walls and in fact vary from the dimensions that would be determined by using the description and definition of the "Unit" set forth in the Declaration (which generally only includes the interior airspace between the perimeter walls and excludes interior structural components). For your reference, the area of the Unit, determined in accordance with those defined unit boundaries, is 985 to 1,242 sq. ft on Residences A, B and C and 1,331 to 1,894 sq. ft on Residences D, E and F. Note that measurements of rooms set forth on this floor plan are generally taken at the greatest points of each given room (as if the room were a perfect rectangle), without regard for any cutouts. Accordingly, the area of the actual room will typically be smaller than the product obtained by multiplying the stated length times width. All dimensions are approximate and may vary with actual construction, and all floor plans and development plans are subject to change. Oral representation cannot be relied upon as correctly stating representations of the developer.



**Building 4  
Residence G**

1 BEDROOM - 1 BATH · DEN

	SQ FT	M <sup>2</sup>
Interior	726	67.4
Balcony/Terrace	83	7.7
<b>Total</b>	<b>809</b>	<b>75.1</b>

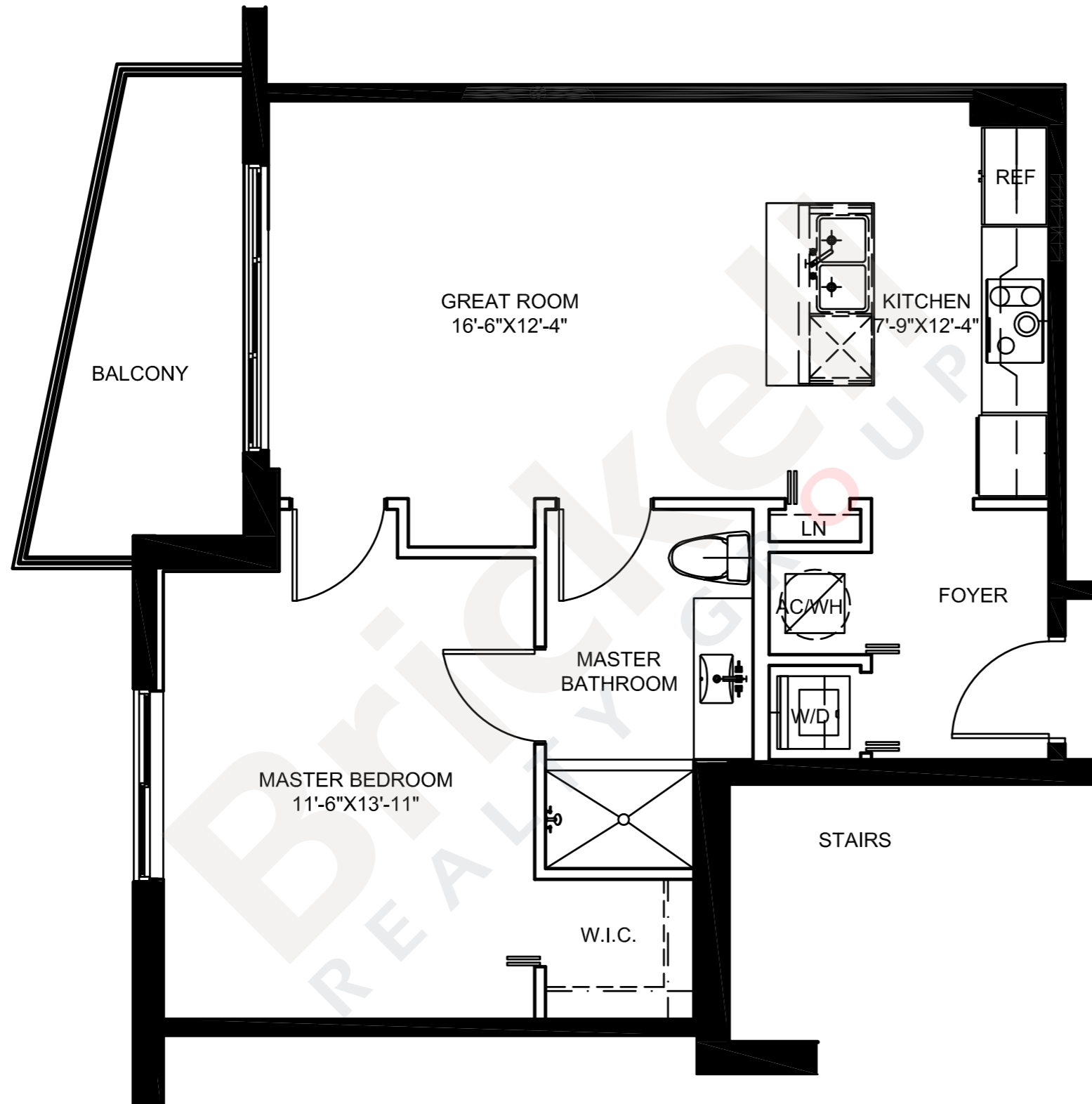
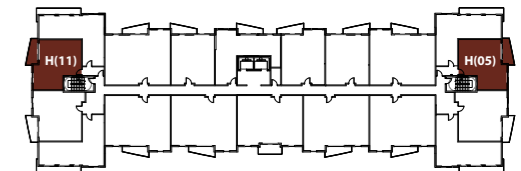




**Building 4  
Residence H**

1 BEDROOM - 1 BATH

	SQ FT	M <sup>2</sup>
Interior	641	59.5
Balcony/Terrace	83	7.7
<b>Total</b>	<b>724</b>	<b>67.2</b>



**Brickell**  
REALTY GROUP

2071 NW 112th Avenue, Miami, FL 33172

[www.brickell-realty.com/MidtownDoral4.html](http://www.brickell-realty.com/MidtownDoral4.html)

Stated dimensions are measured to the exterior boundaries of the exterior walls and the centerline of interior demising walls and in fact vary from the dimensions that would be determined by using the description and definition of the "Unit" set forth in the Declaration (which generally only includes the interior airspace between the perimeter walls and excludes interior structural components). For your reference, the area of the Unit, determined in accordance with those defined unit boundaries, is 985 to 1,242 sq. ft. on Residences A, B and C and 1,331 to 1,894 sq. ft. on Residences D, E and F. Note that measurements of rooms set forth on this floor plan are generally taken at the greatest points of each given room (as if the room were a perfect rectangle), without regard for any cutouts. Accordingly, the area of the actual room will typically be smaller than the product obtained by multiplying the stated length times width. All dimensions are approximate and may vary with actual construction, and all floor plans and development plans are subject to change. Oral representation cannot be relied upon as correctly stating representations of the developer.