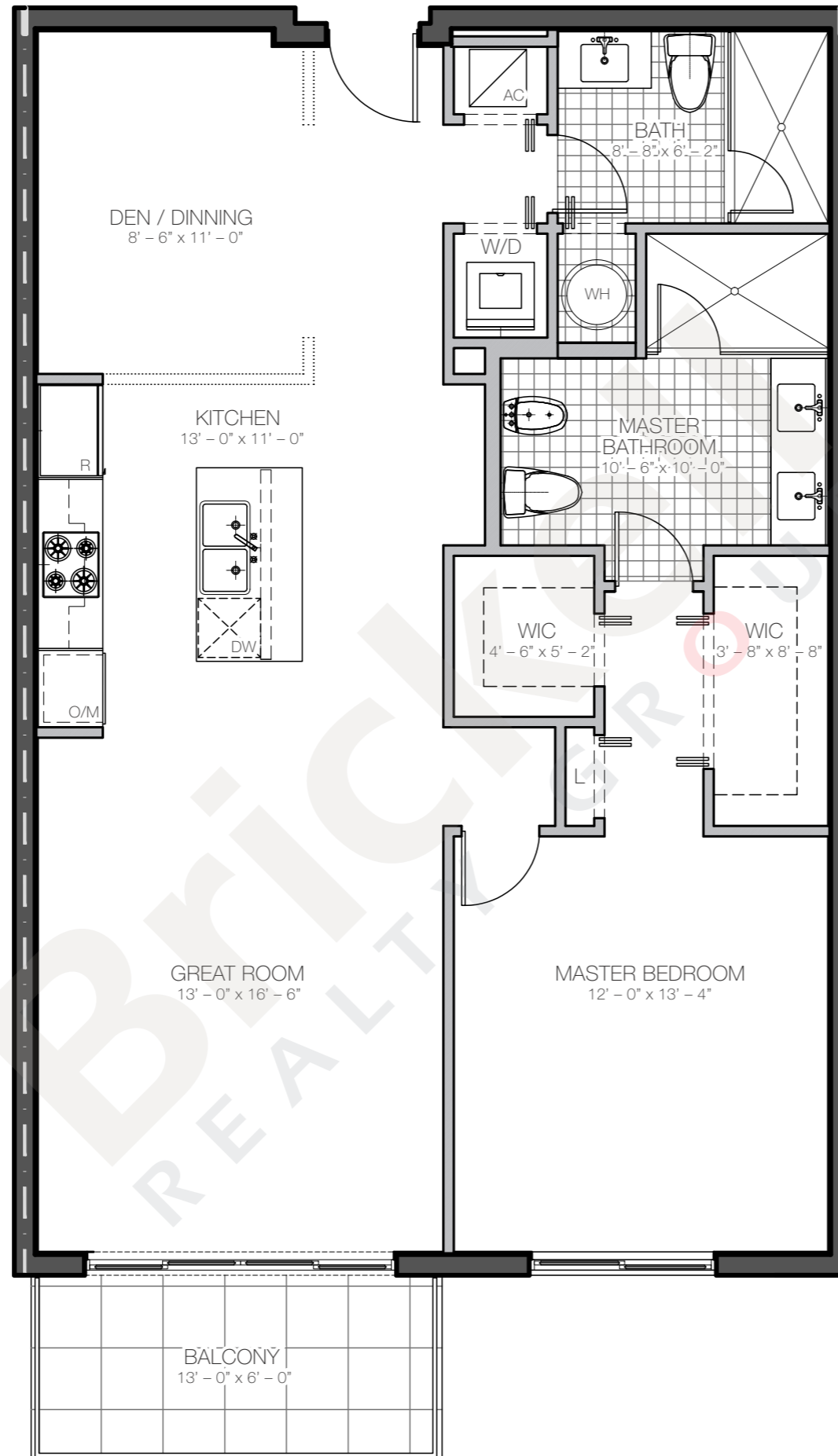
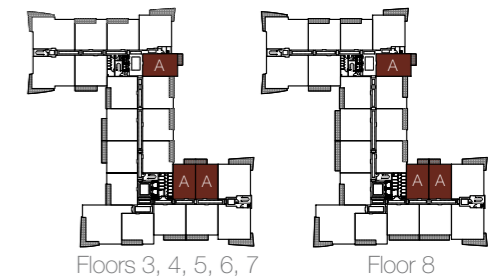




## Residence A

1 BEDROOM - 2 BATHS - DEN

	SQ FT	M <sup>2</sup>
Interior	1,053	97.8
Balcony/Terrace	79	7.3
<b>Total</b>	<b>1,132</b>	<b>104.1</b>

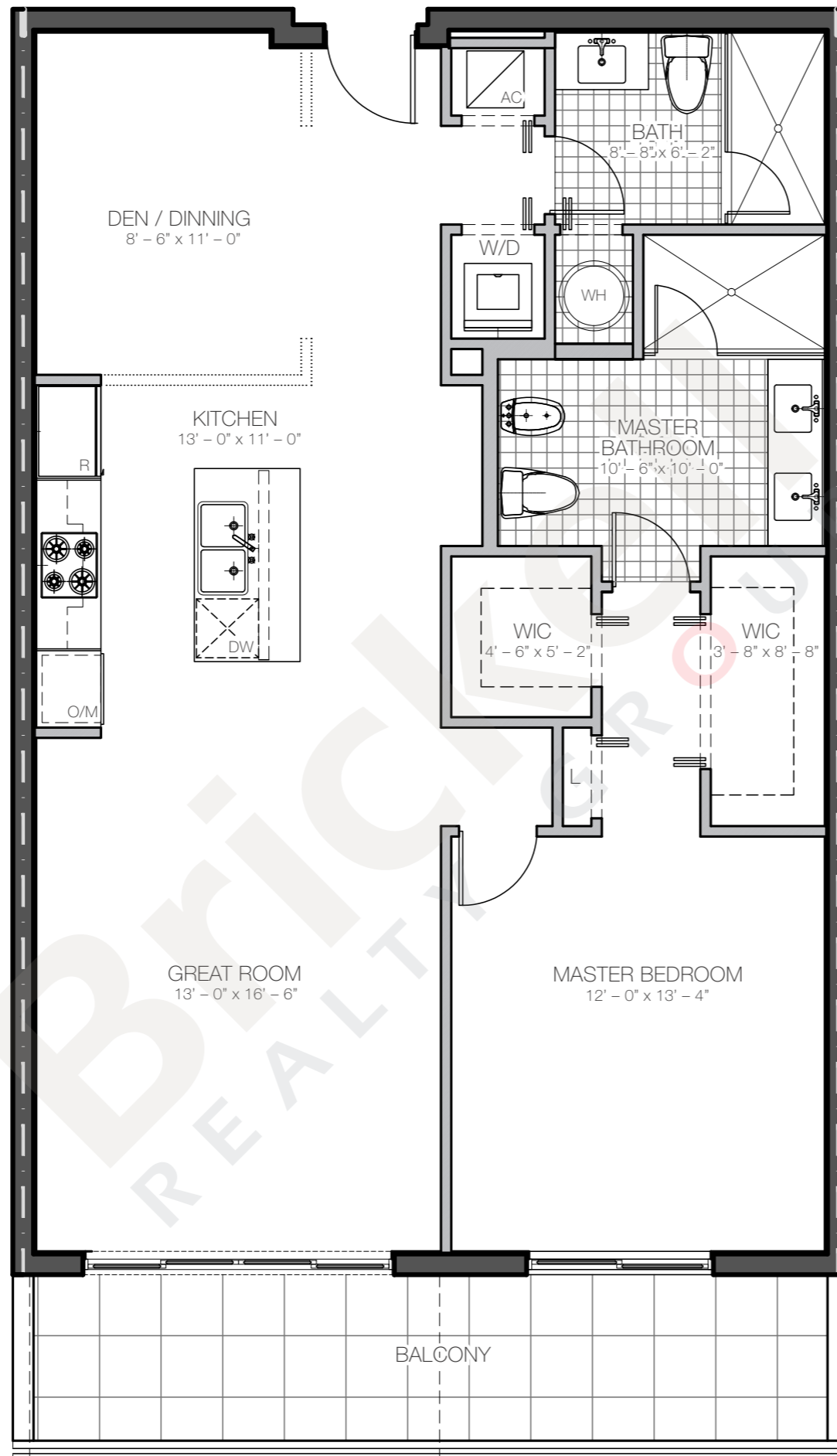


**Brickell**  
REALTY GROUP

2071 NW 112th Avenue, Miami, FL 33172

[www.brickell-realty.com/MidtownDoral.html](http://www.brickell-realty.com/MidtownDoral.html)

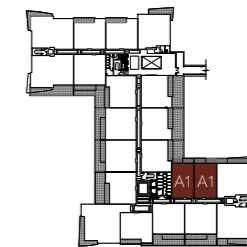
Stated dimensions are measured to the exterior boundaries of the exterior walls and the centerline of interior demising walls and in fact vary from the dimensions that would be determined by using the description and definition of the "Unit" set forth in the Declaration (which generally only includes the interior airspace between the perimeter walls and excludes interior structural components). For your reference, the area of the Unit, determined in accordance with those defined unit boundaries, is 985 to 1,242 sq. ft. on Residences A, B and C and 1,331 to 1,894 sq. ft. on Residences D, E and F. Note that measurements of rooms set forth on this floor plan are generally taken at the greatest points of each given room (as if the room were a perfect rectangle), without regard for any cutouts. Accordingly, the area of the actual room will typically be smaller than the product obtained by multiplying the stated length times width. All dimensions are approximate and may vary with actual construction, and all floor plans and development plans are subject to change. Oral representation cannot be relied upon as correctly stating representations of the developer.



### Residence A1

1 BEDROOM - 2 BATHS - DEN

	SQ FT	M <sup>2</sup>
Interior	1,053	97.8
Balcony/Terrace	157	14.6
<b>Total</b>	<b>1,210</b>	<b>112.4</b>



Floor 2

## Brickell REALTY GROUP

2071 NW 112th Avenue, Miami, FL 33172

[www.brickell-realty.com/MidtownDoral.html](http://www.brickell-realty.com/MidtownDoral.html)

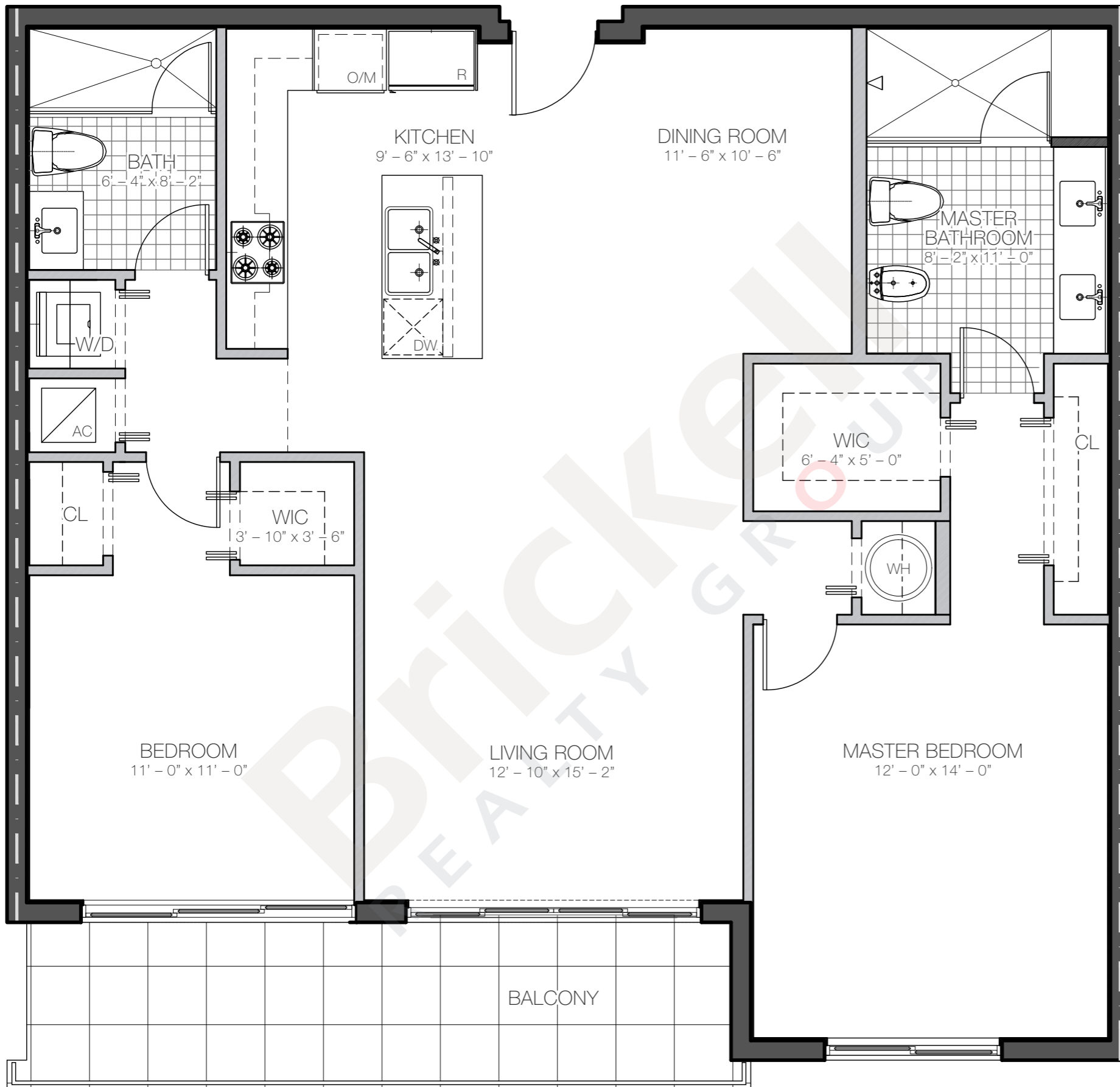
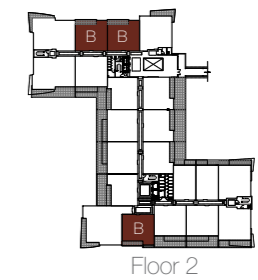
Stated dimensions are measured to the exterior boundaries of the exterior walls and the centerline of interior demising walls and in fact vary from the dimensions that would be determined by using the description and definition of the "Unit" set forth in the Declaration (which generally only includes the interior airspace between the perimeter walls and excludes interior structural components). For your reference, the area of the Unit, determined in accordance with those defined unit boundaries, is 985 to 1,242 sq. ft. on Residences A, B and C and 1,331 to 1,894 sq. ft. on Residences D, E and F. Note that measurements of rooms set forth on this floor plan are generally taken at the greatest points of each given room (as if the room were a perfect rectangle), without regard for any cutouts. Accordingly, the area of the actual room will typically be smaller than the product obtained by multiplying the stated length times width. All dimensions are approximate and may vary with actual construction, and all floor plans and development plans are subject to change. Oral representation cannot be relied upon as correctly stating representations of the developer.



### Residence B

2 BEDROOMS - 2 BATHS

	SQ FT	M <sup>2</sup>
Interior	1,204	111.9
Balcony/Terrace	138	12.8
<b>Total</b>	<b>1,342</b>	<b>124.7</b>



## Brickell REALTY GROUP

2071 NW 112th Avenue, Miami, FL 33172

[www.brickell-realty.com/MidtownDoral.html](http://www.brickell-realty.com/MidtownDoral.html)

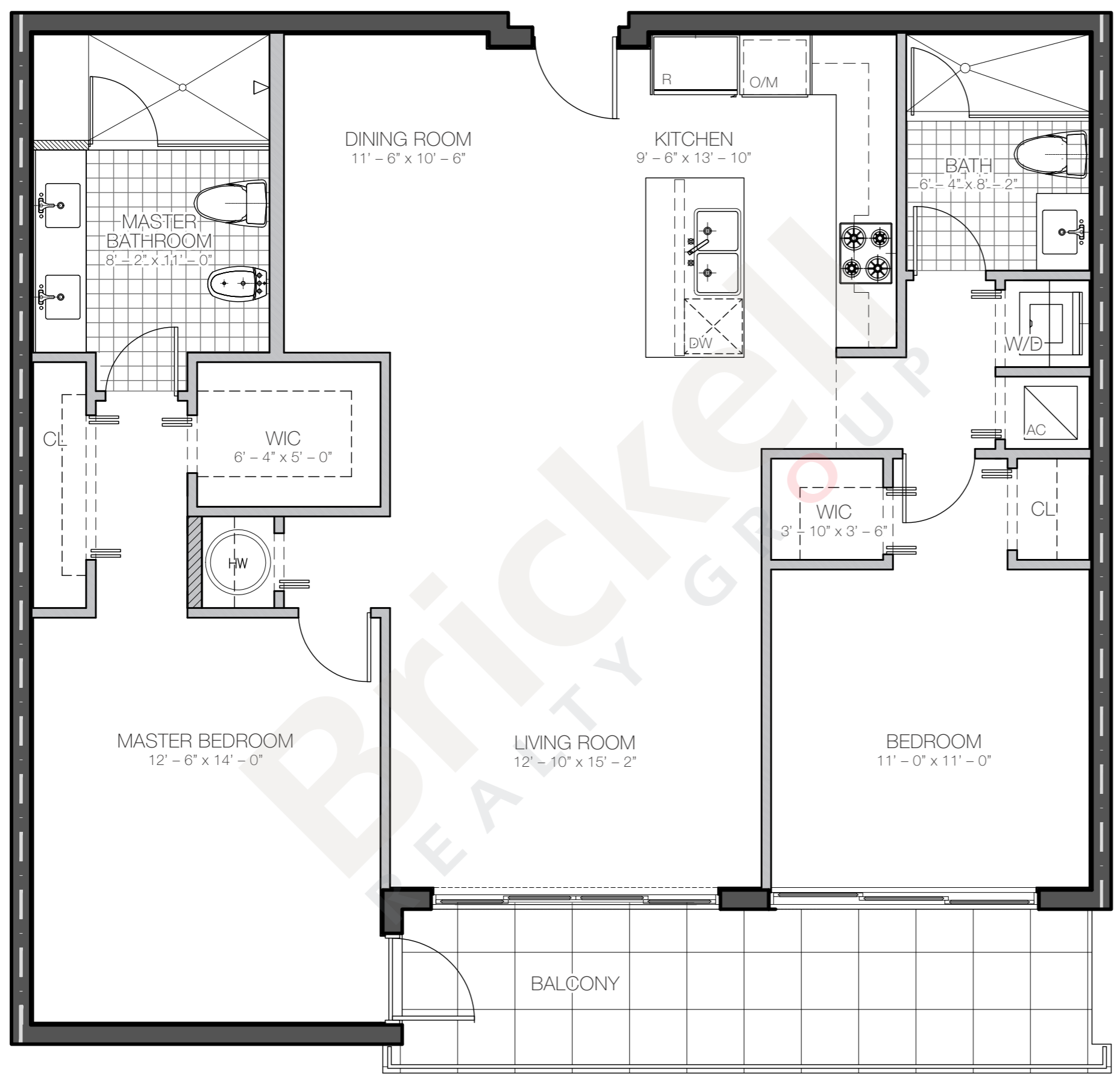
Stated dimensions are measured to the exterior boundaries of the exterior walls and the centerline of interior demising walls and in fact vary from the dimensions that would be determined by using the description and definition of the "Unit" set forth in the Declaration (which generally only includes the interior airspace between the perimeter walls and excludes interior structural components). For your reference, the area of the actual room will typically be smaller than the product obtained by multiplying the stated length times width. All dimensions are approximate and may vary with actual construction, and all floor plans and development plans are subject to change. Oral representation cannot be relied upon as correctly stating representations of the developer.



### Residence B1

2 BEDROOMS - 2 BATHS

	SQ FT	M <sup>2</sup>
Interior	1,200	111.4
Balcony/Terrace	138	12.8
<b>Total</b>	<b>1,338</b>	<b>124.3</b>



2071 NW 112th Avenue, Miami, FL 33172  
[www.brickell-realty.com/MidtownDoral.html](http://www.brickell-realty.com/MidtownDoral.html)

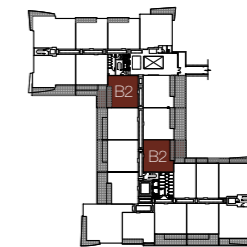
Stated dimensions are measured to the exterior boundaries of the exterior walls and the centerline of interior demising walls and in fact vary from the dimensions that would be determined by using the description and definition of the "Unit" set forth in the Declaration (which generally only includes the interior airspace between the perimeter walls and excludes interior structural components). For your reference, the area of the actual unit, determined in accordance with those defined unit boundaries, is 985 to 1,242 sq. ft. on Residences A, B and C and 1,331 to 1,894 sq. ft. on Residences D, E and F. Note that measurements of rooms set forth on this floor plan are generally taken at the greatest points of each given room (as if the room were a perfect rectangle), without regard for any cutouts. Accordingly, the area of the actual room will typically be smaller than the product obtained by multiplying the stated length times width. All dimensions are approximate and may vary with actual construction, and all floor plans and development plans are subject to change. Oral representation cannot be relied upon as correctly stating representations of the developer.



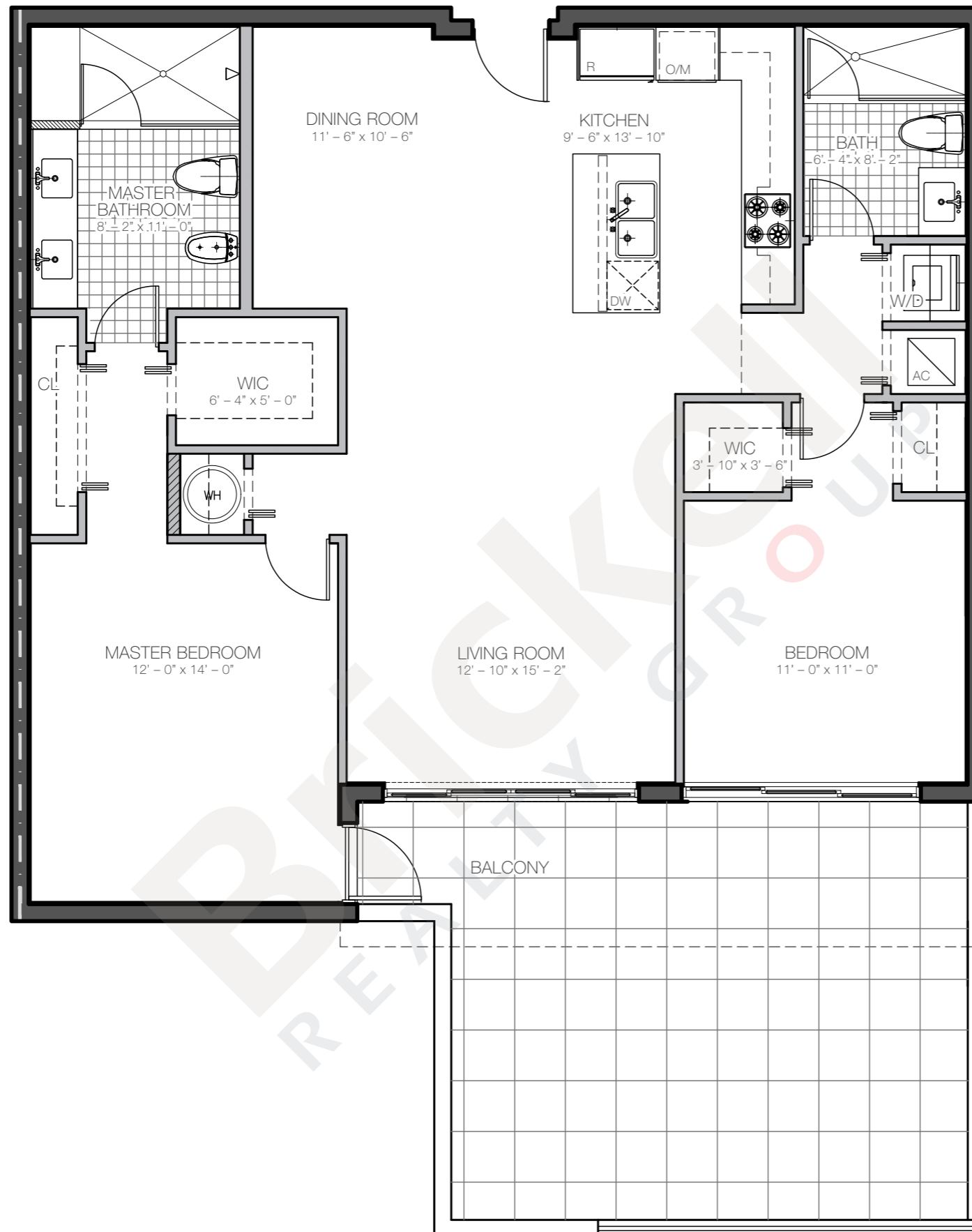
## Residence B2

2 BEDROOMS - 2 BATHS

	SQ FT	M <sup>2</sup>
Interior	1,200	111.4
Balc/Terr (207)	367	34.1
Balc/Terr (219)	414	38.5
<b>Total (207)</b>	<b>1,566</b>	<b>145.5</b>
<b>Total (219)</b>	<b>1,614</b>	<b>149.9</b>



Floor 2



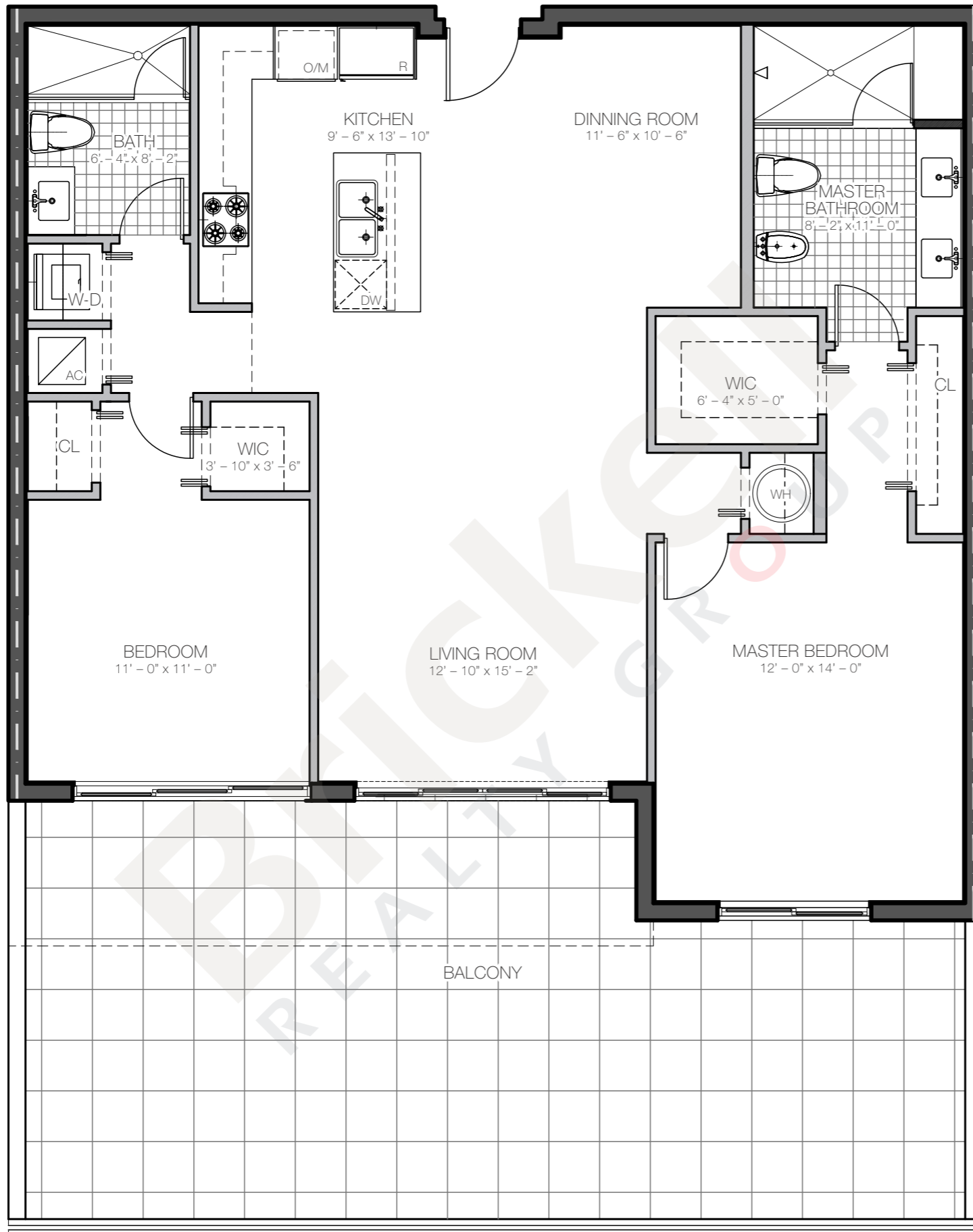
# Brickell

REALTY GROUP

2071 NW 112th Avenue, Miami, FL 33172

[www.brickell-realty.com/MidtownDoral.html](http://www.brickell-realty.com/MidtownDoral.html)

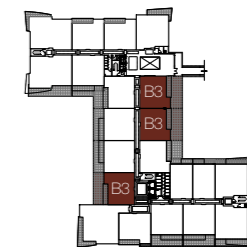
Stated dimensions are measured to the exterior boundaries of the exterior walls and the centerline of interior demising walls and in fact vary from the dimensions that would be determined by using the description and definition of the "Unit" set forth in the Declaration (which generally only includes the interior airspace between the perimeter walls and excludes interior structural components). For your reference, the area of the actual room will typically be smaller than the product obtained by multiplying the stated length times width. All dimensions are approximate and may vary with actual construction, and all floor plans and development plans are subject to change. Oral representation cannot be relied upon as correctly stating representations of the developer.



### Residence B3

2 BEDROOMS - 2 BATHS

	SQ FT	M <sup>2</sup>
Interior	1,204	111.9
Balc/Terr (210)	573	53.2
Balc/Terr (220/221)	636	59.1
<b>Total (207)</b>	<b>1,777</b>	<b>165.1</b>
<b>Total (220/221)</b>	<b>1,840</b>	<b>170.9</b>



Floor 2

## Brickell REALTY GROUP

2071 NW 112th Avenue, Miami, FL 33172

[www.brickell-realty.com/MidtownDoral.html](http://www.brickell-realty.com/MidtownDoral.html)

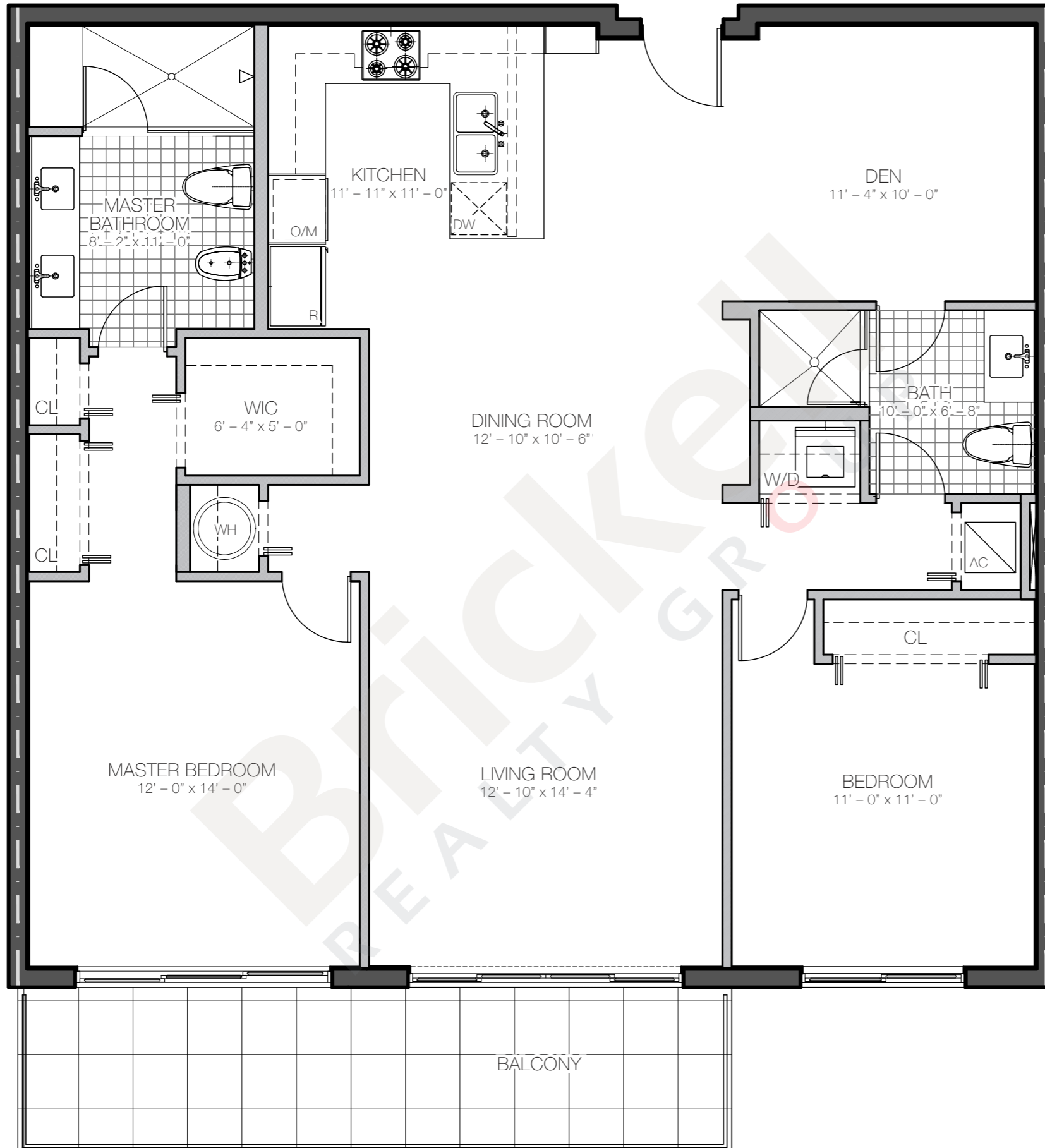
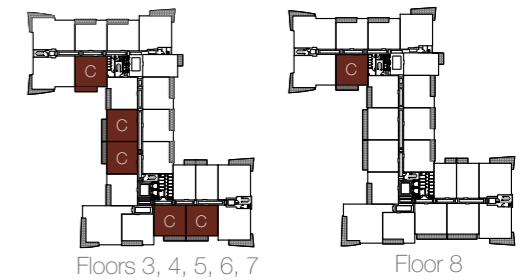
Stated dimensions are measured to the exterior boundaries of the exterior walls and the centerline of interior demising walls and in fact vary from the dimensions that would be determined by using the description and definition of the "Unit" set forth in the Declaration (which generally only includes the interior airspace between the perimeter walls and excludes interior structural components). For your reference, the area of the actual room will typically be smaller than the product obtained by multiplying the stated length times width. All dimensions are approximate and may vary with actual construction, and all floor plans and development plans are subject to change. Oral representation cannot be relied upon as correctly stating representations of the developer.



## Residence C

2 BEDROOMS - 2 BATHS - DEN

	SQ FT	M <sup>2</sup>
Interior	1,317	122.3
Balcony/Terrace	156	14.5
<b>Total</b>	<b>1,472</b>	<b>136.8</b>



**Brickell**  
 REALTY GROUP

2071 NW 112th Avenue, Miami, FL 33172

[www.brickell-realty.com/MidtownDoral.html](http://www.brickell-realty.com/MidtownDoral.html)

Stated dimensions are measured to the exterior boundaries of the exterior walls and the centerline of interior demising walls and in fact vary from the dimensions that would be determined by using the description and definition of the "Unit" set forth in the Declaration (which generally only includes the interior airspace between the perimeter walls and excludes interior structural components). For your reference, the area of the Unit, determined in accordance with those defined unit boundaries, is 985 to 1,242 sq. ft. on Residences A, B and C and 1,331 to 1,894 sq. ft. on Residences D, E and F. Note that measurements of rooms set forth on this floor plan are generally taken at the greatest points of each given room (as if the room were a perfect rectangle), without regard for any cutouts. Accordingly, the area of the actual room will typically be smaller than the product obtained by multiplying the stated length times width. All dimensions are approximate and may vary with actual construction, and all floor plans and development plans are subject to change. Oral representation cannot be relied upon as correctly stating representations of the developer.

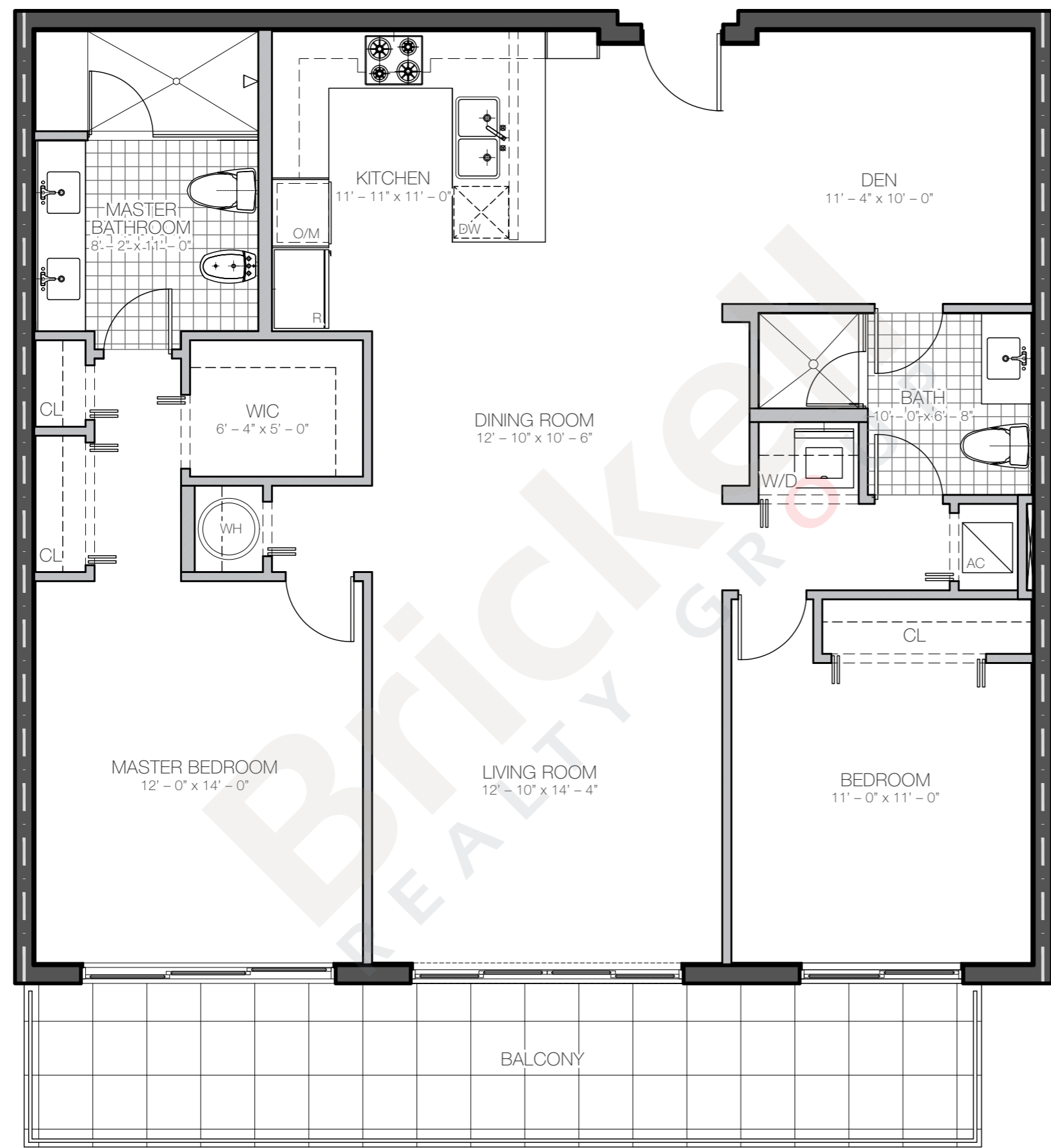
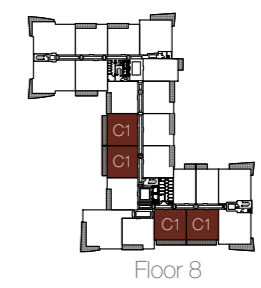




### Residence C1

2 BEDROOMS - 2 BATHS - DEN

	SQ FT	M <sup>2</sup>
Interior	1,317	122.3
Balcony/Terrace	211	19.6
<b>Total</b>	<b>1,527</b>	<b>141.9</b>



## Brickell REALTY GROUP

2071 NW 112th Avenue, Miami, FL 33172  
[www.brickell-realty.com/MidtownDoral.html](http://www.brickell-realty.com/MidtownDoral.html)

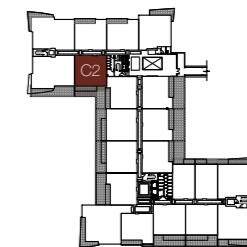
Stated dimensions are measured to the exterior boundaries of the exterior walls and the centerline of interior demising walls and in fact vary from the dimensions that would be determined by using the description and definition of the "Unit" set forth in the Declaration (which generally only includes the interior airspace between the perimeter walls and excludes interior structural components). For your reference, the area of the Unit, determined in accordance with those defined unit boundaries, is 985 to 1,242 sq. ft. on Residences A, B and C and 1,331 to 1,894 sq. ft. on Residences D, E and F. Note that measurements of rooms set forth on this floor plan are generally taken at the greatest points of each given room (as if the room were a perfect rectangle), without regard for any cutouts. Accordingly, the area of the actual room will typically be smaller than the product obtained by multiplying the stated length times width. All dimensions are approximate and may vary with actual construction, and all floor plans and development plans are subject to change. Oral representation cannot be relied upon as correctly stating representations of the developer.



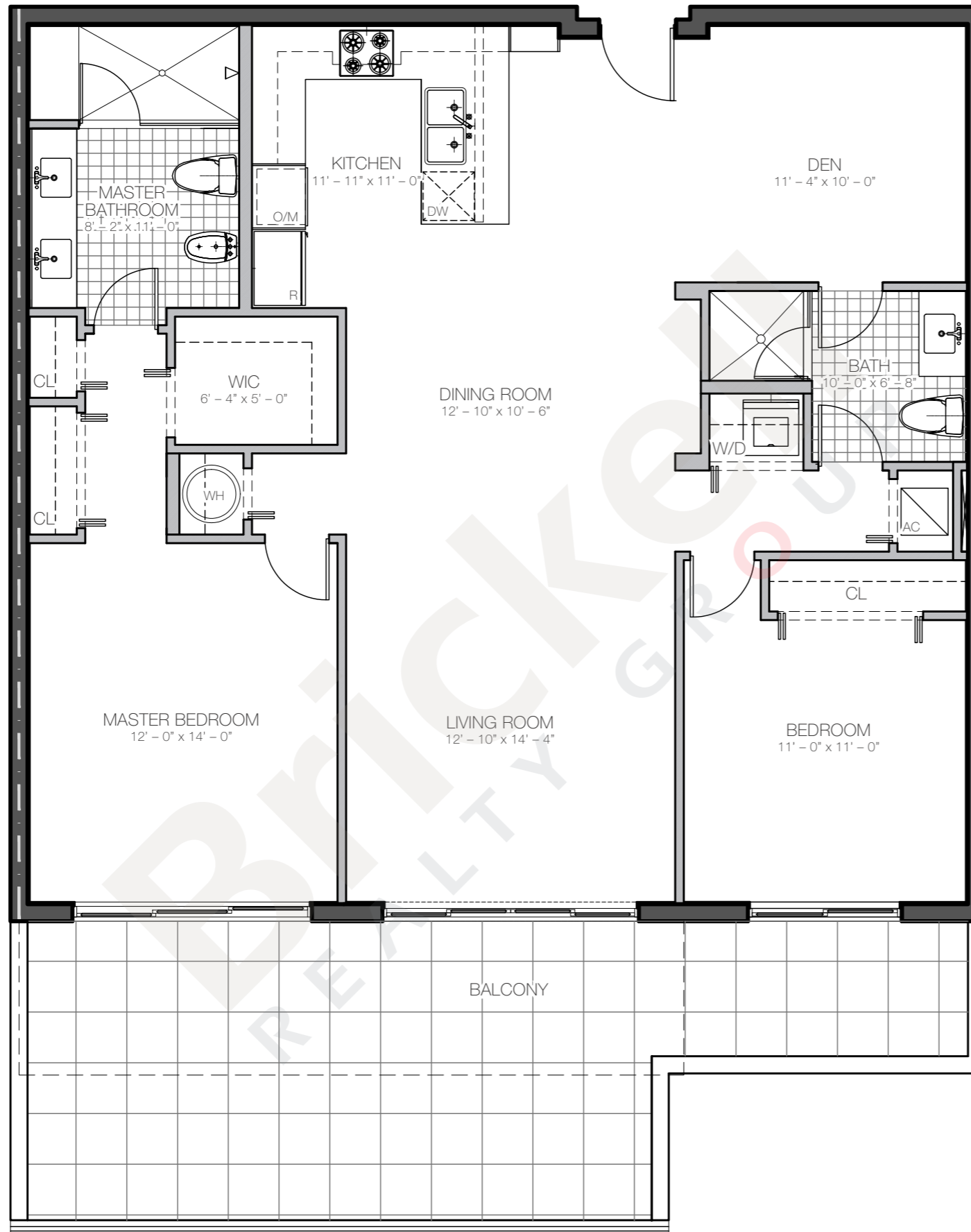
Residence C2

2 BEDROOMS - 2 BATHS - DEN

	SQ FT	M <sup>2</sup>
Interior	1,317	122.3
Balcony/Terrace	377	35.0
<b>Total</b>	<b>1,694</b>	<b>157.4</b>



Floor 2

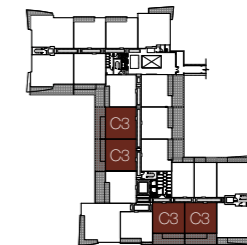




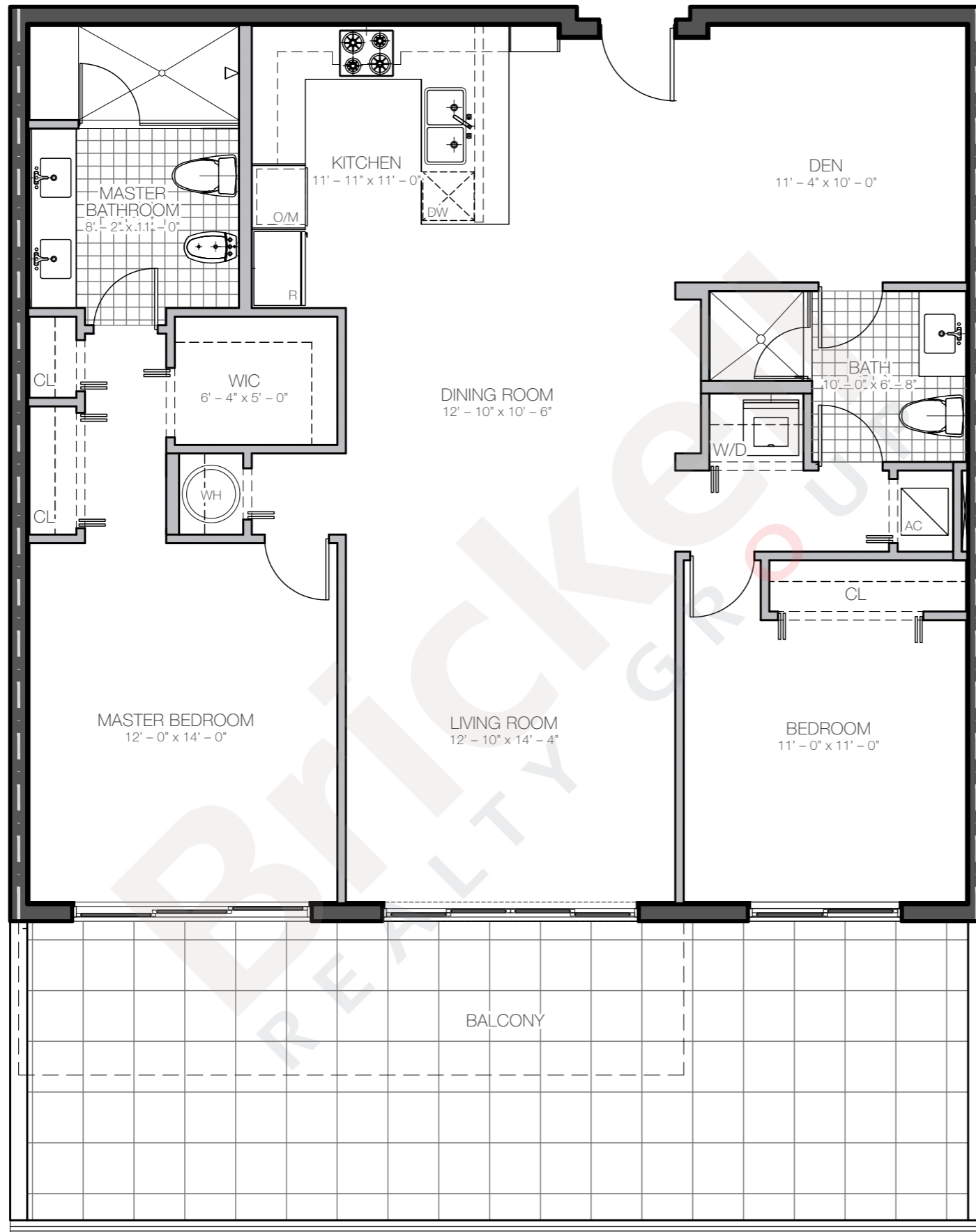
### Residence C3

2 BEDROOMS - 2 BATHS - DEN

	SQ FT	M <sup>2</sup>
Interior	1,317	122.3
Balc/Terr (208/209)	460	42.8
Balc/Terr (213/214)	510	47.4
<b>Total (208/209)</b>	<b>1,777</b>	<b>165.1</b>
<b>Total (213/214)</b>	<b>1,827</b>	<b>169.7</b>



Floor 2



**Brickell**  
REALTY GROUP

2071 NW 112th Avenue, Miami, FL 33172

[www.brickell-realty.com/MidtownDoral.html](http://www.brickell-realty.com/MidtownDoral.html)

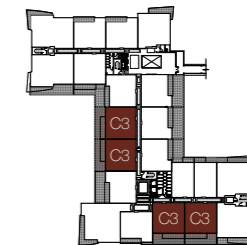
Stated dimensions are measured to the exterior boundaries of the exterior walls and the centerline of interior demising walls and in fact vary from the dimensions that would be determined by using the description and definition of the "Unit" set forth in the Declaration (which generally only includes the interior airspace between the perimeter walls and excludes interior structural components). For your reference, the area of the actual room will typically be smaller than the product obtained by multiplying the stated length times width. All dimensions are approximate and may vary with actual construction, and all floor plans and development plans are subject to change. Oral representation cannot be relied upon as correctly stating representations of the developer.



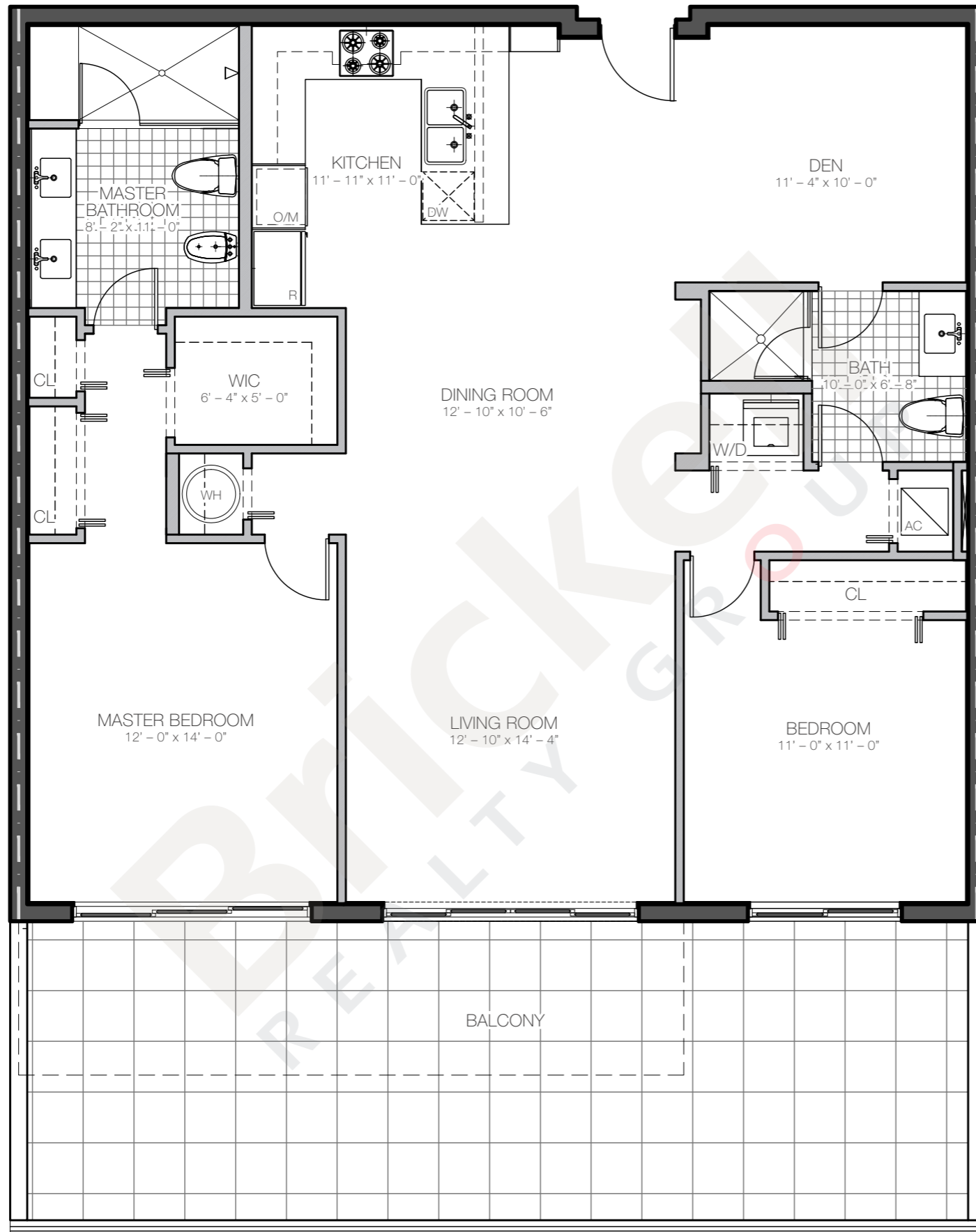
### Residence C3

2 BEDROOMS - 2 BATHS - DEN

	SQ FT	M <sup>2</sup>
Interior	1,317	122.3
Balc/Terr (208/209)	460	42.8
Balc/Terr (213/214)	510	47.4
<b>Total (208/209)</b>	<b>1,777</b>	<b>165.1</b>
<b>Total (213/214)</b>	<b>1,827</b>	<b>169.7</b>



Floor 2



**Brickell**  
REALTY GROUP

2071 NW 112th Avenue, Miami, FL 33172

[www.brickell-realty.com/MidtownDoral.html](http://www.brickell-realty.com/MidtownDoral.html)

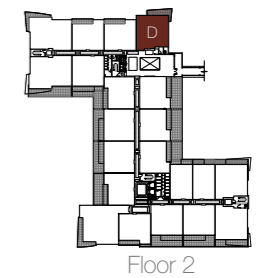
Stated dimensions are measured to the exterior boundaries of the exterior walls and the centerline of interior demising walls and in fact vary from the dimensions that would be determined by using the description and definition of the "Unit" set forth in the Declaration (which generally only includes the interior airspace between the perimeter walls and excludes interior structural components). For your reference, the area of the actual room will typically be smaller than the product obtained by multiplying the stated length times width. All dimensions are approximate and may vary with actual construction, and all floor plans and development plans are subject to change. Oral representation cannot be relied upon as correctly stating representations of the developer.



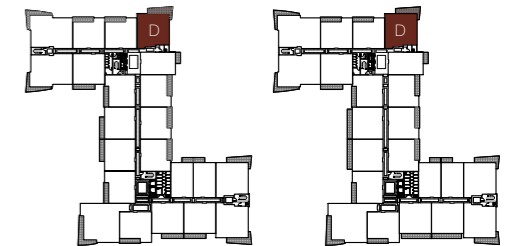
## Residence D

3 BEDROOMS - 2.5 BATHS

	SQ FT	M <sup>2</sup>
Interior	1,431	132.9
Balcony/Terrace	223	20.7
<b>Total</b>	<b>1,654</b>	<b>153.7</b>



Floor 2



Floors 3, 4, 5, 6, 7

Floor 8



# Brickell REALTY GROUP

2071 NW 112th Avenue, Miami, FL 33172

[www.brickell-realty.com/MidtownDoral.html](http://www.brickell-realty.com/MidtownDoral.html)

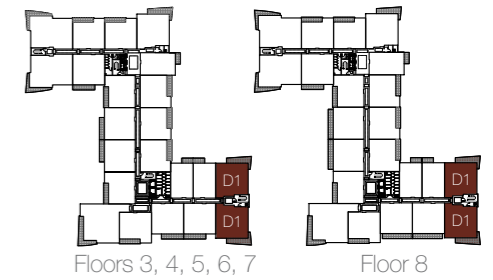
Stated dimensions are measured to the exterior boundaries of the exterior walls and the centerline of interior demising walls and in fact vary from the dimensions that would be determined by using the description and definition of the "Unit" set forth in the Declaration (which generally only includes the interior airspace between the perimeter walls and excludes interior structural components). For your reference, the area of the Unit, determined in accordance with those defined unit boundaries, is 985 to 1,242 sq. ft. on Residences A, B and C and 1,331 to 1,894 sq. ft. on Residences D, E and F. Note that measurements of rooms set forth on this floor plan are generally taken at the greatest points of each given room (as if the room were a perfect rectangle), without regard for any cutouts. Accordingly, the area of the actual room will typically be smaller than the product obtained by multiplying the stated length times width. All dimensions are approximate and may vary with actual construction, and all floor plans and development plans are subject to change. Oral representation cannot be relied upon as correctly stating representations of the developer.



## Residence D1

3 BEDROOMS - 2.5 BATHS

	SQ FT	M <sup>2</sup>
Interior	1,427	132.6
Balcony/Terrace	223	20.7
<b>Total</b>	<b>1,650</b>	<b>153.3</b>



# Brickell

REALTY GROUP

2071 NW 112th Avenue, Miami, FL 33172

[www.brickell-realty.com/MidtownDoral.html](http://www.brickell-realty.com/MidtownDoral.html)

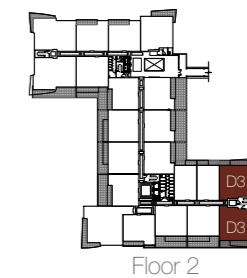
Stated dimensions are measured to the exterior boundaries of the exterior walls and the centerline of interior demising walls and in fact vary from the dimensions that would be determined by using the description and definition of the "Unit" set forth in the Declaration (which generally only includes the interior airspace between the perimeter walls and excludes interior structural components). For your reference, the area of the actual room will typically be smaller than the product obtained by multiplying the stated length times width. All dimensions are approximate and may vary with actual construction, and all floor plans and development plans are subject to change. Oral representation cannot be relied upon as correctly stating representations of the developer.



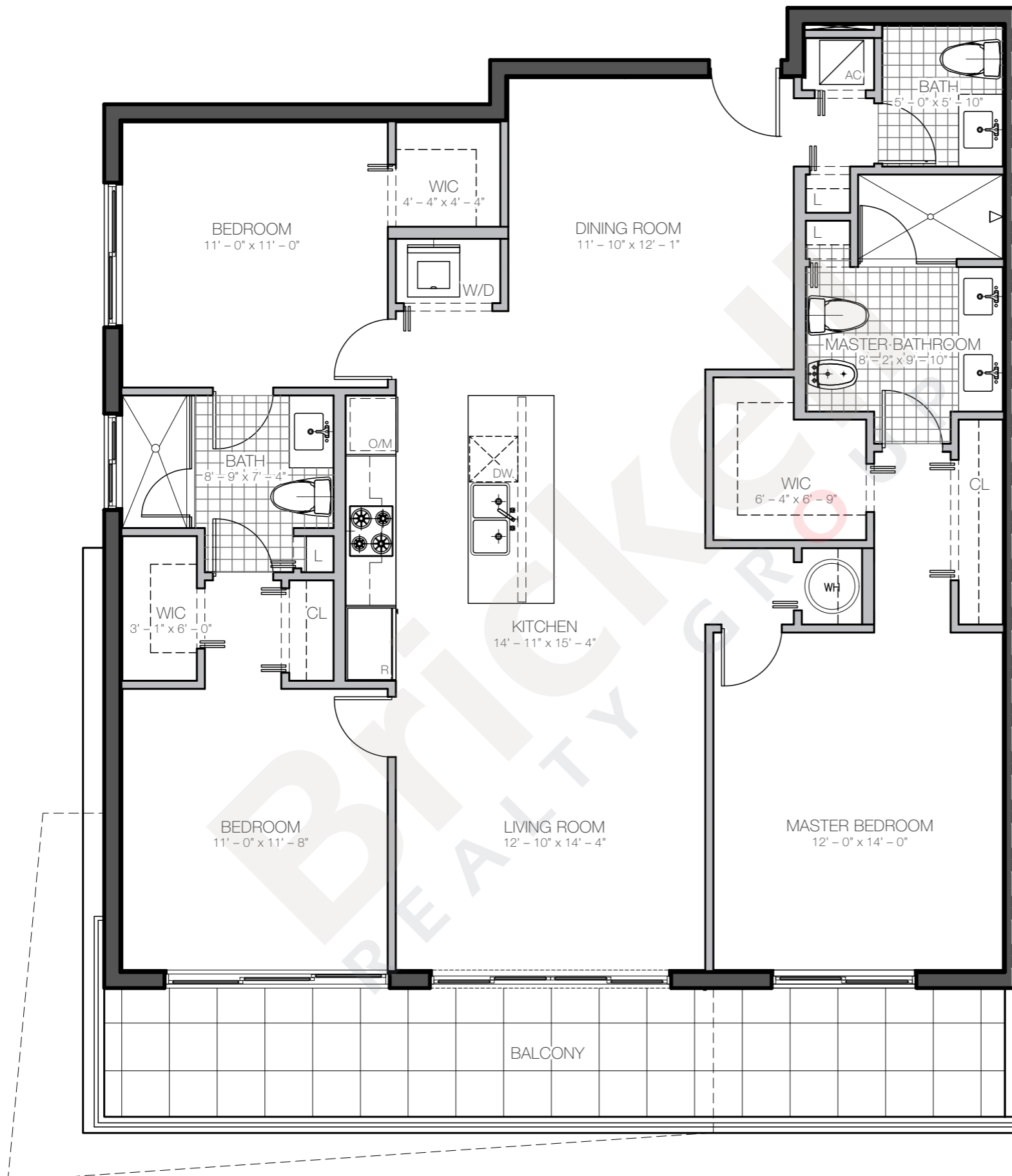
### Residence D3

3 BEDROOMS - 2.5 BATHS

	SQ FT	M <sup>2</sup>
Interior	1,427	132.6
Balcony/Terrace	232	21.6
<b>Total</b>	<b>1,659</b>	<b>154.2</b>



Floor 2



## Brickell REALTY GROUP

2071 NW 112th Avenue, Miami, FL 33172

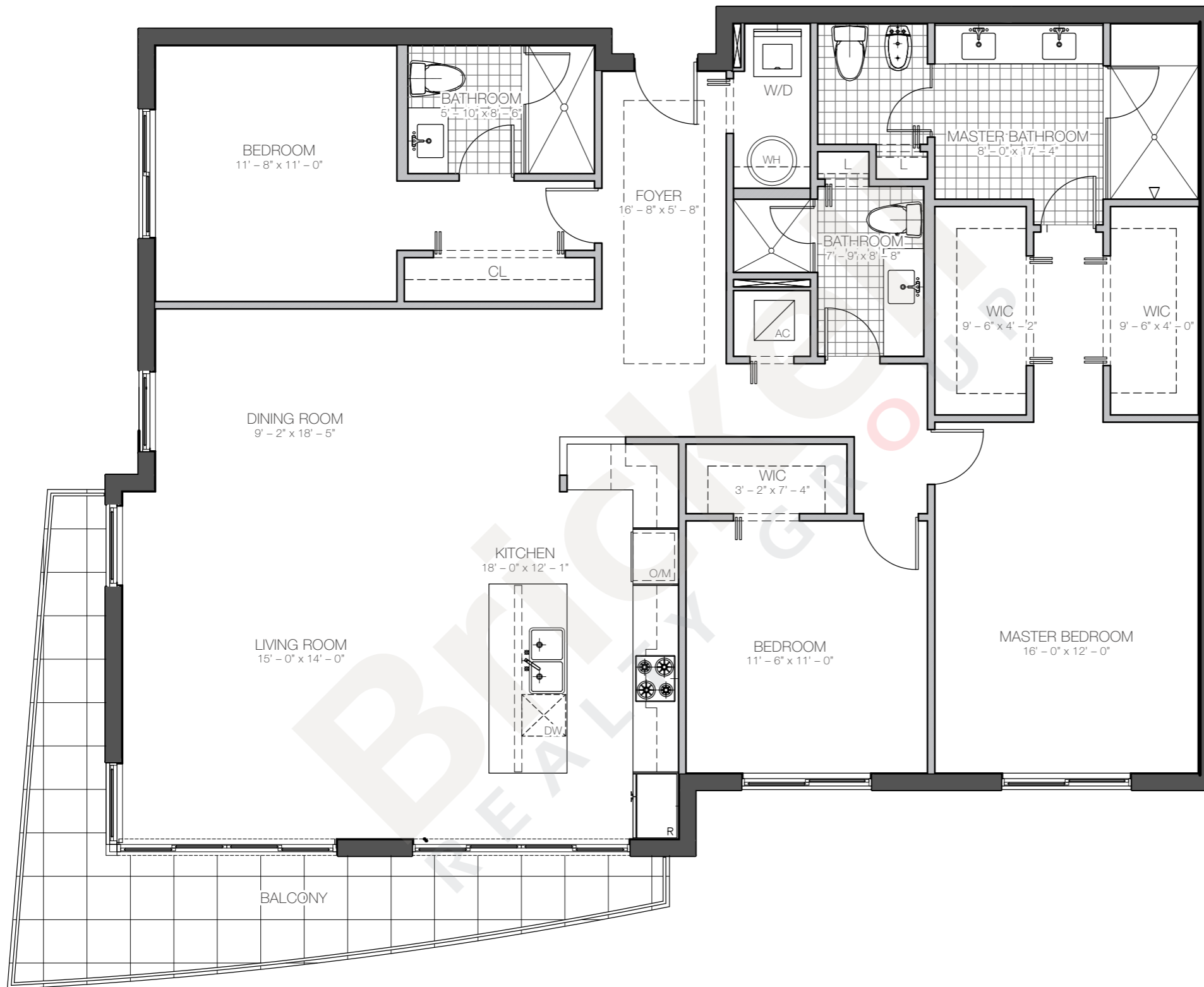
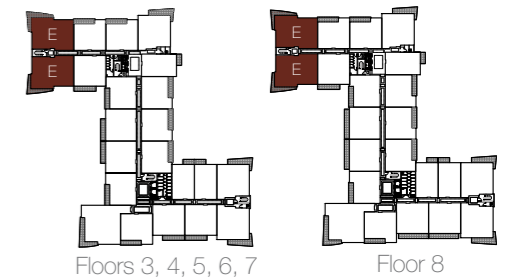
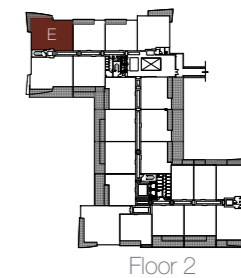
[www.brickell-realty.com/MidtownDoral.html](http://www.brickell-realty.com/MidtownDoral.html)

Stated dimensions are measured to the exterior boundaries of the exterior walls and the centerline of interior demising walls and in fact vary from the dimensions that would be determined by using the description and definition of the "Unit" set forth in the Declaration (which generally only includes the interior airspace between the perimeter walls and excludes interior structural components). For your reference, the area of the Unit, determined in accordance with those defined unit boundaries, is 985 to 1,242 sq. ft. on Residences A, B and C and 1,331 to 1,894 sq. ft. on Residences D, E and F. Note that measurements of rooms set forth on this floor plan are generally taken at the greatest points of each given room (as if the room were a perfect rectangle), without regard for any cutouts. Accordingly, the area of the actual room will typically be smaller than the product obtained by multiplying the stated length times width. All dimensions are approximate and may vary with actual construction, and all floor plans and development plans are subject to change. Oral representation cannot be relied upon as correctly stating representations of the developer.

**Residence E**

3 BEDROOMS - 3 BATHS

	SQ FT	M <sup>2</sup>
Interior	1,789	166.2
Balcony/Terrace	193	17.9
<b>Total</b>	<b>1,981</b>	<b>184.1</b>



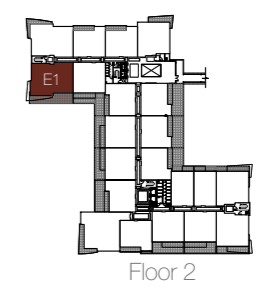




### Residence E1

3 BEDROOMS - 3 BATHS

	SQ FT	M <sup>2</sup>
Interior	1,789	166.2
Balcony/Terrace	545	50.6
<b>Total</b>	<b>2,333</b>	<b>216.8</b>



2071 NW 112th Avenue, Miami, FL 33172  
[www.brickell-realty.com/MidtownDoral.html](http://www.brickell-realty.com/MidtownDoral.html)

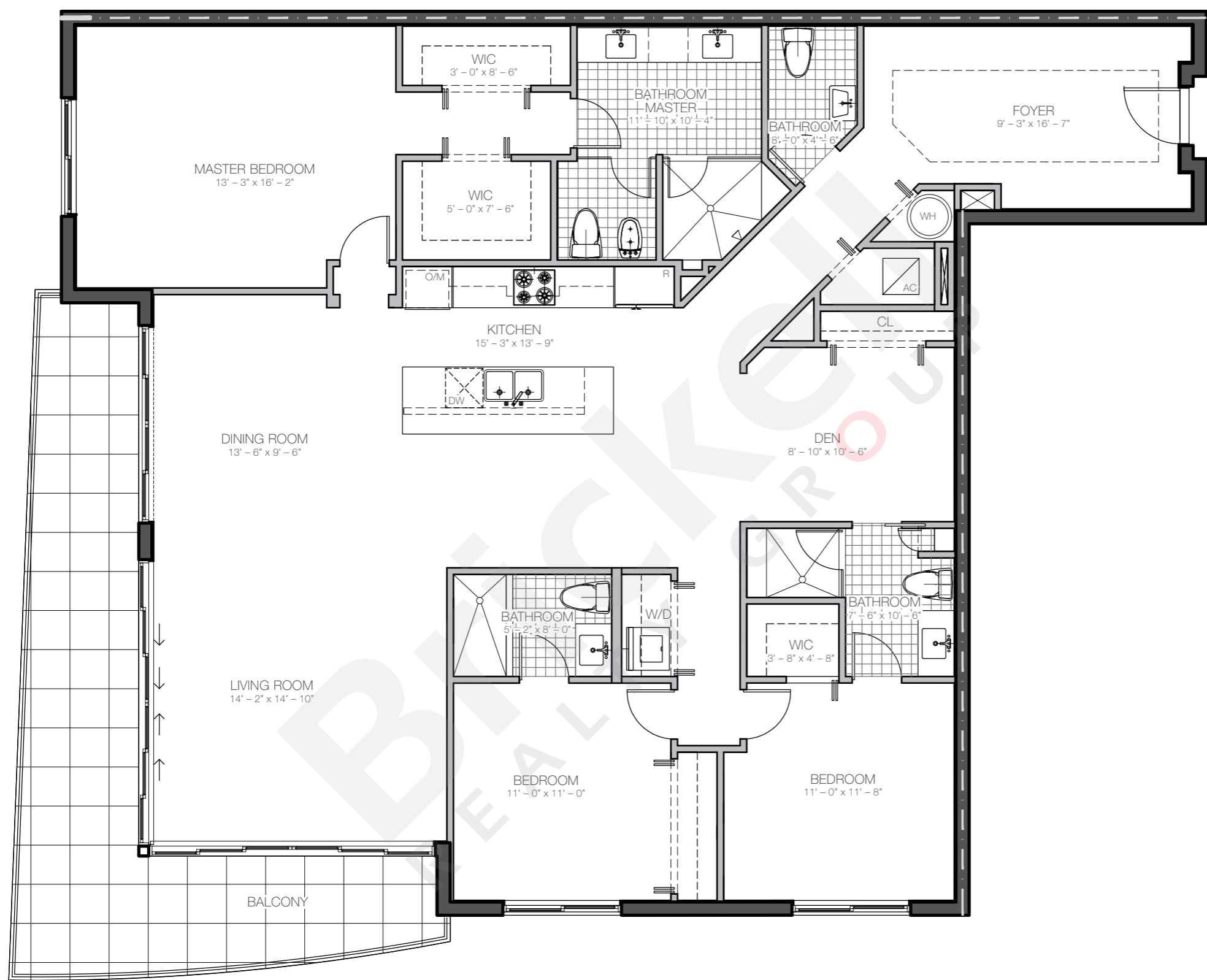
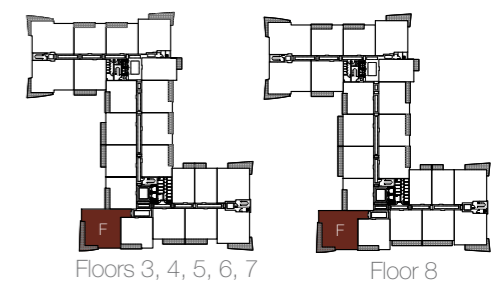
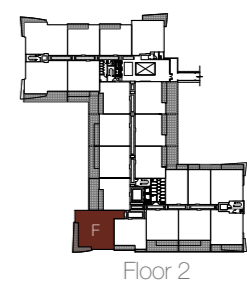
Stated dimensions are measured to the exterior boundaries of the exterior walls and the centerline of interior demising walls and in fact vary from the dimensions that would be determined by using the description and definition of the "Unit" set forth in the Declaration (which generally only includes the interior airspace between the perimeter walls and excludes interior structural components). For your reference, the area of the Unit, determined in accordance with those defined unit boundaries, is 985 to 1,242 sq. ft. on Residences A, B and C and 1,331 to 1,894 sq. ft. on Residences D, E and F. Note that measurements of rooms set forth on this floor plan are generally taken at the greatest points of each given room (as if the room were a perfect rectangle), without regard for any cutouts. Accordingly, the area of the actual room will typically be smaller than the product obtained by multiplying the stated length times width. All dimensions are approximate and may vary with actual construction, and all floor plans and development plans are subject to change. Oral representation cannot be relied upon as correctly stating representations of the developer.



### Residence F

3 BEDROOMS - 3 BATHS - DEN

	SQ FT	M <sup>2</sup>
Interior	2,021	187.8
Balcony/Terrace	288	26.7
<b>Total</b>	<b>2,309</b>	<b>214.5</b>



## Brickell REALTY GROUP

2071 NW 112th Avenue, Miami, FL 33172  
[www.brickell-realty.com/MidtownDoral.html](http://www.brickell-realty.com/MidtownDoral.html)

Stated dimensions are measured to the exterior boundaries of the exterior walls and the centerline of interior demising walls and in fact vary from the dimensions that would be determined by using the description and definition of the "Unit" set forth in the Declaration (which generally only includes the interior airspace between the perimeter walls and excludes interior structural components). For your reference, the area of the Unit, determined in accordance with those defined unit boundaries, is 985 to 1,242 sq. ft on Residences A, B and C and 1,331 to 1,894 sq. ft on Residences D, E and F. Note that measurements of rooms set forth on this floor plan are generally taken at the greatest points of each given room (as if the room were a perfect rectangle), without regard for any cutouts. Accordingly, the area of the actual room will typically be smaller than the product obtained by multiplying the stated length times width. All dimensions are approximate and may vary with actual construction, and all floor plans and development plans are subject to change. Oral representation cannot be relied upon as correctly stating representations of the developer.