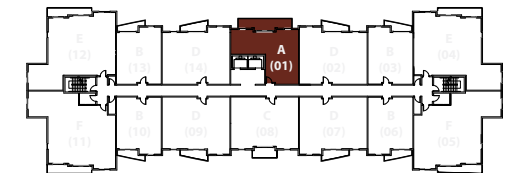




## Building 1 Residence A

1 BEDROOM - 1.5 BATHS · DEN

	SQ FT	M <sup>2</sup>
Interior	837	77.7
Balcony	161	15.0
<b>Total</b>	<b>998</b>	<b>92.7</b>

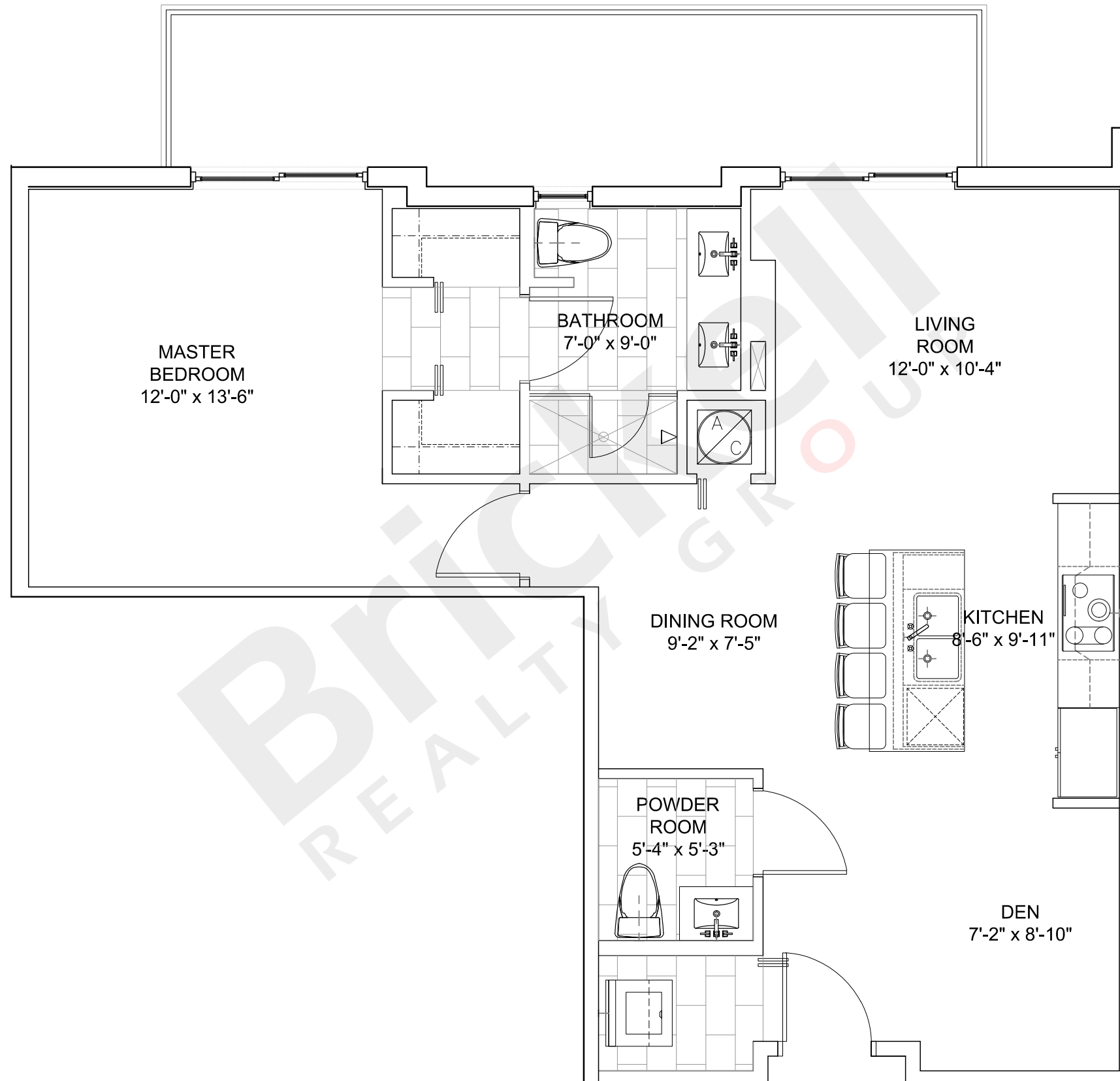


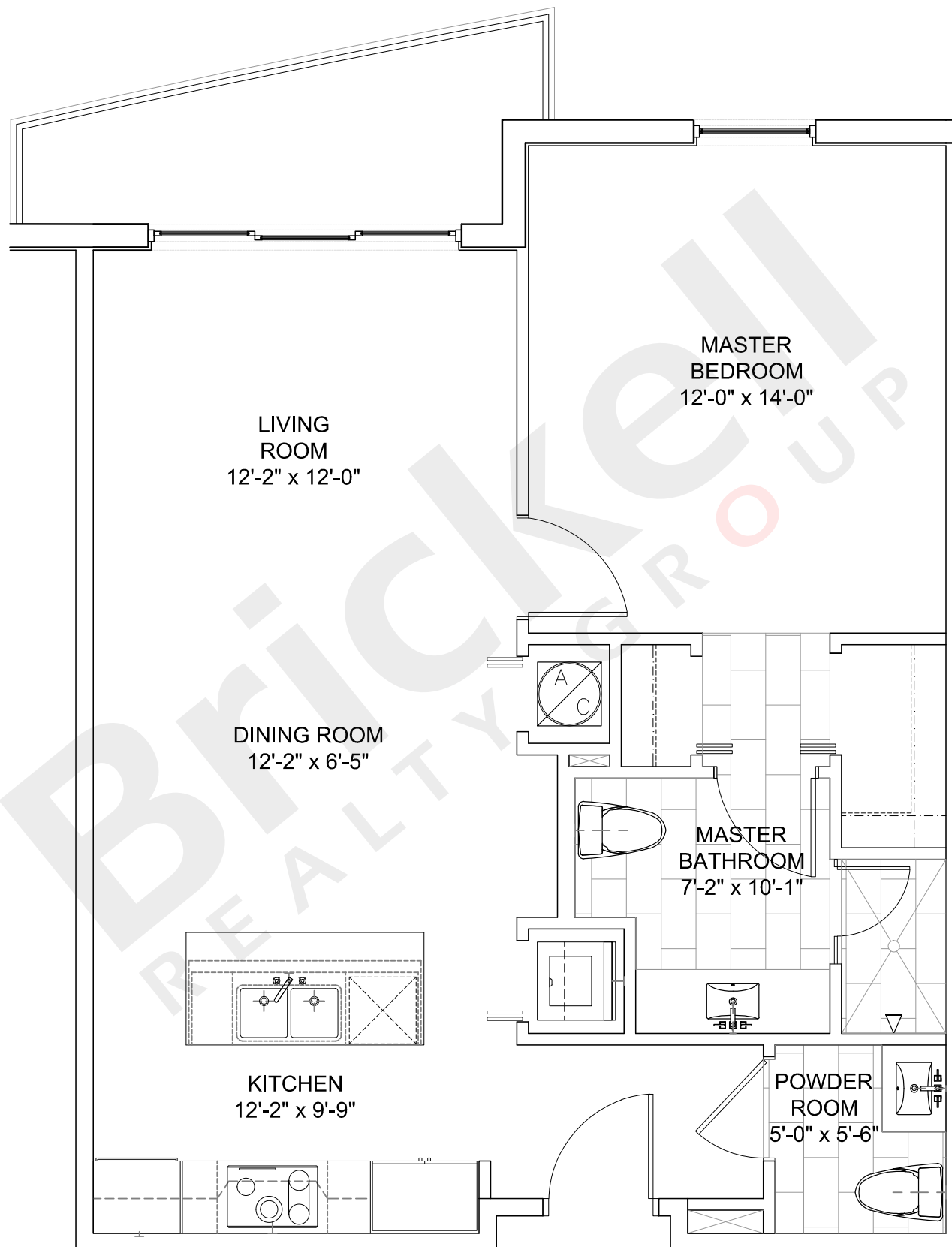
**Brickell**  
REALTY GROUP

2071 NW 112th Avenue, Miami, FL 33172

[www.brickell-realty.com/MidtownDoral1.html](http://www.brickell-realty.com/MidtownDoral1.html)

Stated dimensions are measured to the exterior boundaries of the exterior walls and the centerline of interior demising walls and in fact vary from the dimensions that would be determined by using the description and definition of the "Unit" set forth in the Declaration (which generally only includes the interior airspace between the perimeter walls and excludes interior structural components). For your reference, the area of the Unit, determined in accordance with those defined unit boundaries, is 985 to 1,242 sq. ft on Residences A, B and C and 1,331 to 1,894 sq. ft on Residences D, E and F. Note that measurements of rooms set forth on this floor plan are generally taken at the greatest points of each given room (as if the room were a perfect rectangle), without regard for any cutouts. Accordingly, the area of the actual room will typically be smaller than the product obtained by multiplying the stated length times width. All dimensions are approximate and may vary with actual construction, and all floor plans and development plans are subject to change. Oral representation cannot be relied upon as correctly stating representations of the developer.

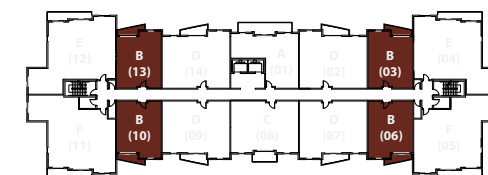




## Building 1 Residence B

1 BEDROOM - 1.5 BATHS

	SQ FT	M <sup>2</sup>
Interior	772	71.7
Balcony	61	5.7
Total	833	77.4



**Brickell**  
REALTY GROUP

2071 NW 112th Avenue, Miami, FL 33172

[www.brickell-realty.com/MidtownDoral1.html](http://www.brickell-realty.com/MidtownDoral1.html)

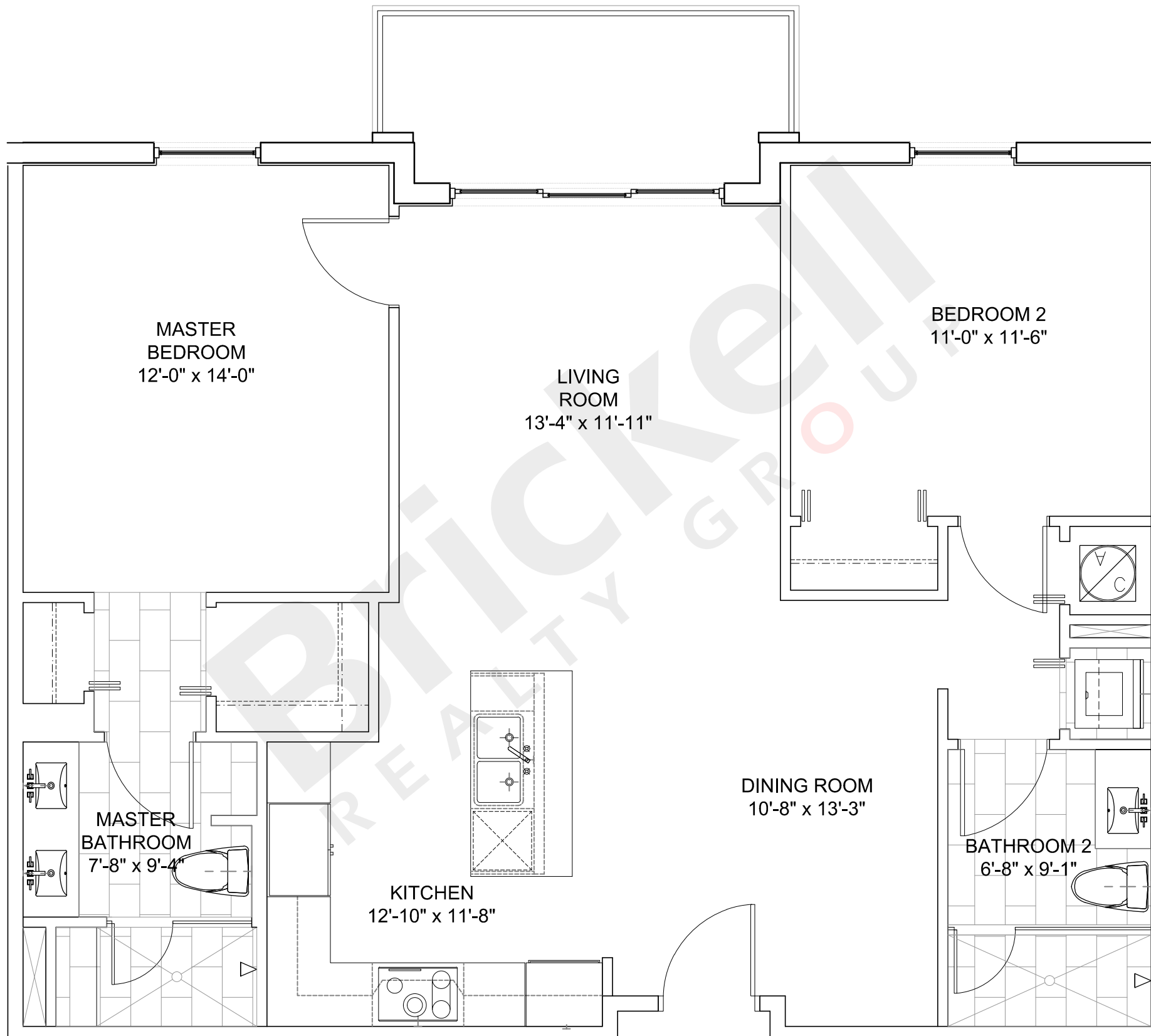
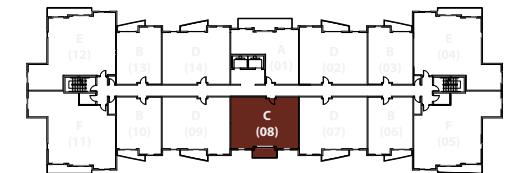
Stated dimensions are measured to the exterior boundaries of the exterior walls and the centerline of interior demising walls and in fact vary from the dimensions that would be determined by using the description and definition of the "Unit" set forth in the Declaration (which generally only includes the interior airspace between the perimeter walls and excludes interior structural components). For your reference, the area of the Unit, determined in accordance with those defined unit boundaries, is 985 to 1,242 sq. ft on Residences A, B and C and 1,331 to 1,894 sq. ft on Residences D, E and F. Note that measurements of rooms set forth on this floor plan are generally taken at the greatest points of each given room (as if the room were a perfect rectangle), without regard for any cutouts. Accordingly, the area of the actual room will typically be smaller than the product obtained by multiplying the stated length times width. All dimensions are approximate and may vary with actual construction, and all floor plans and development plans are subject to change. Oral representation cannot be relied upon as correctly stating representations of the developer.



## Building 1 Residence C

2 BEDROOMS - 2 BATHS

	SQ FT	M <sup>2</sup>
Interior	1,086	100.9
Balcony	78	7.2
Total	1,164	108.1



**Brickell**  
REALTY GROUP

2071 NW 112th Avenue, Miami, FL 33172

[www.brickell-realty.com/MidtownDoral1.html](http://www.brickell-realty.com/MidtownDoral1.html)

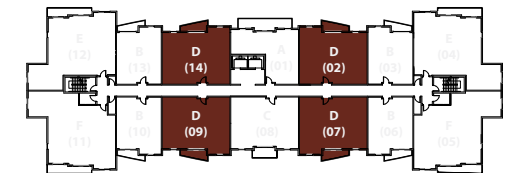
Stated dimensions are measured to the exterior boundaries of the exterior walls and the centerline of interior demising walls and in fact vary from the dimensions that would be determined by using the description and definition of the "Unit" set forth in the Declaration (which generally only includes the interior airspace between the perimeter walls and excludes interior structural components). For your reference, the area of the Unit, determined in accordance with those defined unit boundaries, is 985 to 1,242 sq. ft on Residences A, B and C and 1,331 to 1,894 sq. ft on Residences D, E and F. Note that measurements of rooms set forth on this floor plan are generally taken at the greatest points of each given room (as if the room were a perfect rectangle), without regard for any cutouts. Accordingly, the area of the actual room will typically be smaller than the product obtained by multiplying the stated length times width. All dimensions are approximate and may vary with actual construction, and all floor plans and development plans are subject to change. Oral representation cannot be relied upon as correctly stating representations of the developer.



## Building 1 Residence D

2 BEDROOMS - 2 BATHS

	SQ FT	M <sup>2</sup>
Interior	1,141	106.0
Balcony	76	7.1
Total	1,217	113.1

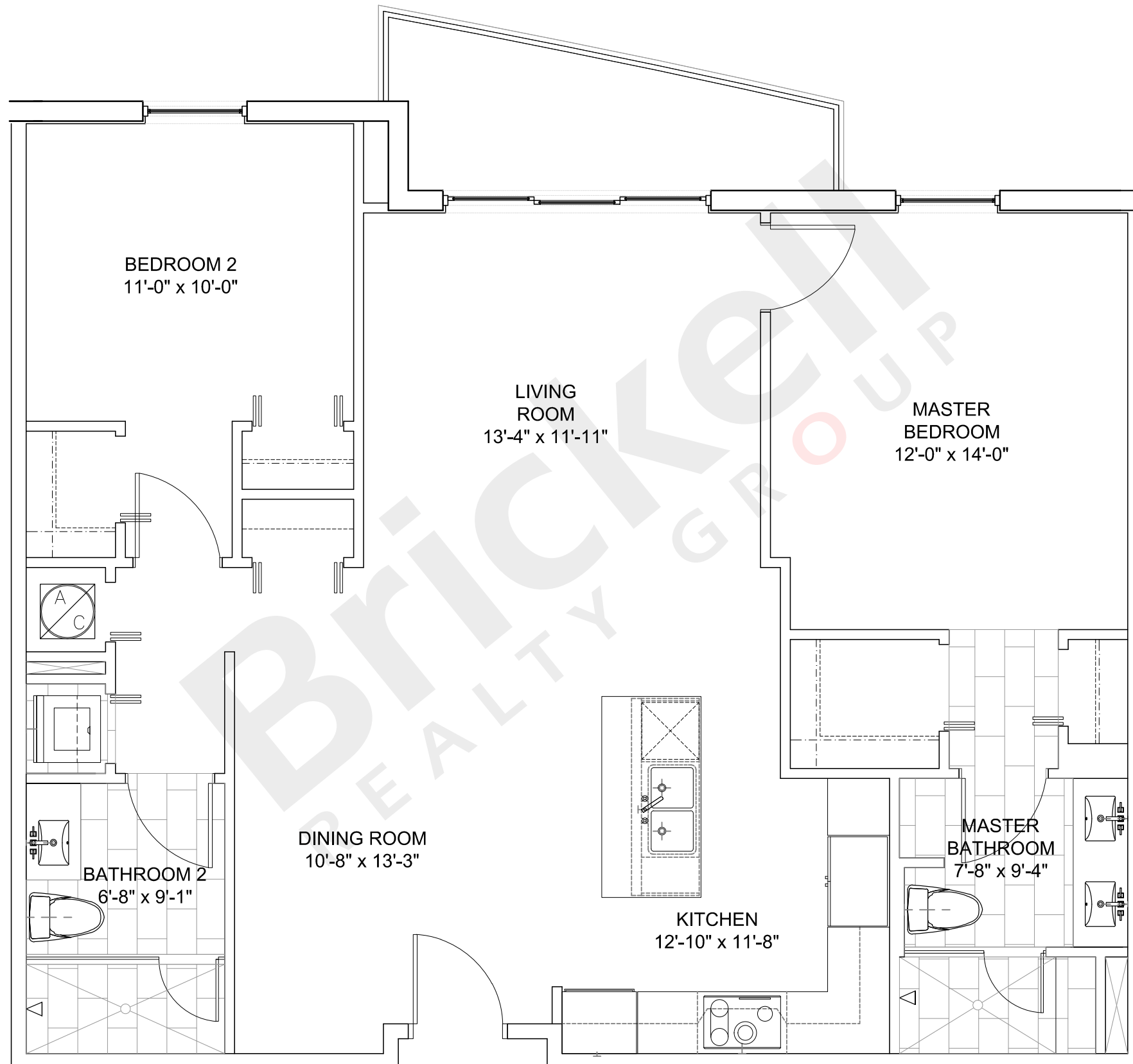


**Brickell**  
REALTY GROUP

2071 NW 112th Avenue, Miami, FL 33172

[www.brickell-realty.com/MidtownDoral1.html](http://www.brickell-realty.com/MidtownDoral1.html)

Stated dimensions are measured to the exterior boundaries of the exterior walls and the centerline of interior demising walls and in fact vary from the dimensions that would be determined by using the description and definition of the "Unit" set forth in the Declaration (which generally only includes the interior airspace between the perimeter walls and excludes interior structural components). For your reference, the area of the Unit, determined in accordance with those defined unit boundaries, is 985 to 1,242 sq. ft on Residences A, B and C and 1,331 to 1,894 sq. ft on Residences D, E and F. Note that measurements of rooms set forth on this floor plan are generally taken at the greatest points of each given room (as if the room were a perfect rectangle), without regard for any cutouts. Accordingly, the area of the actual room will typically be smaller than the product obtained by multiplying the stated length times width. All dimensions are approximate and may vary with actual construction, and all floor plans and development plans are subject to change. Oral representation cannot be relied upon as correctly stating representations of the developer.

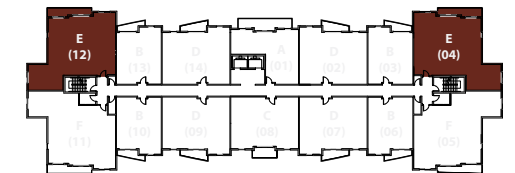




## Building 1 Residence E

3 BEDROOMS - 3 BATHS

	SQ FT	M <sup>2</sup>
Interior	1,514	140.7
Balcony	110	10.2
<b>Total</b>	<b>1,624</b>	<b>150.9</b>

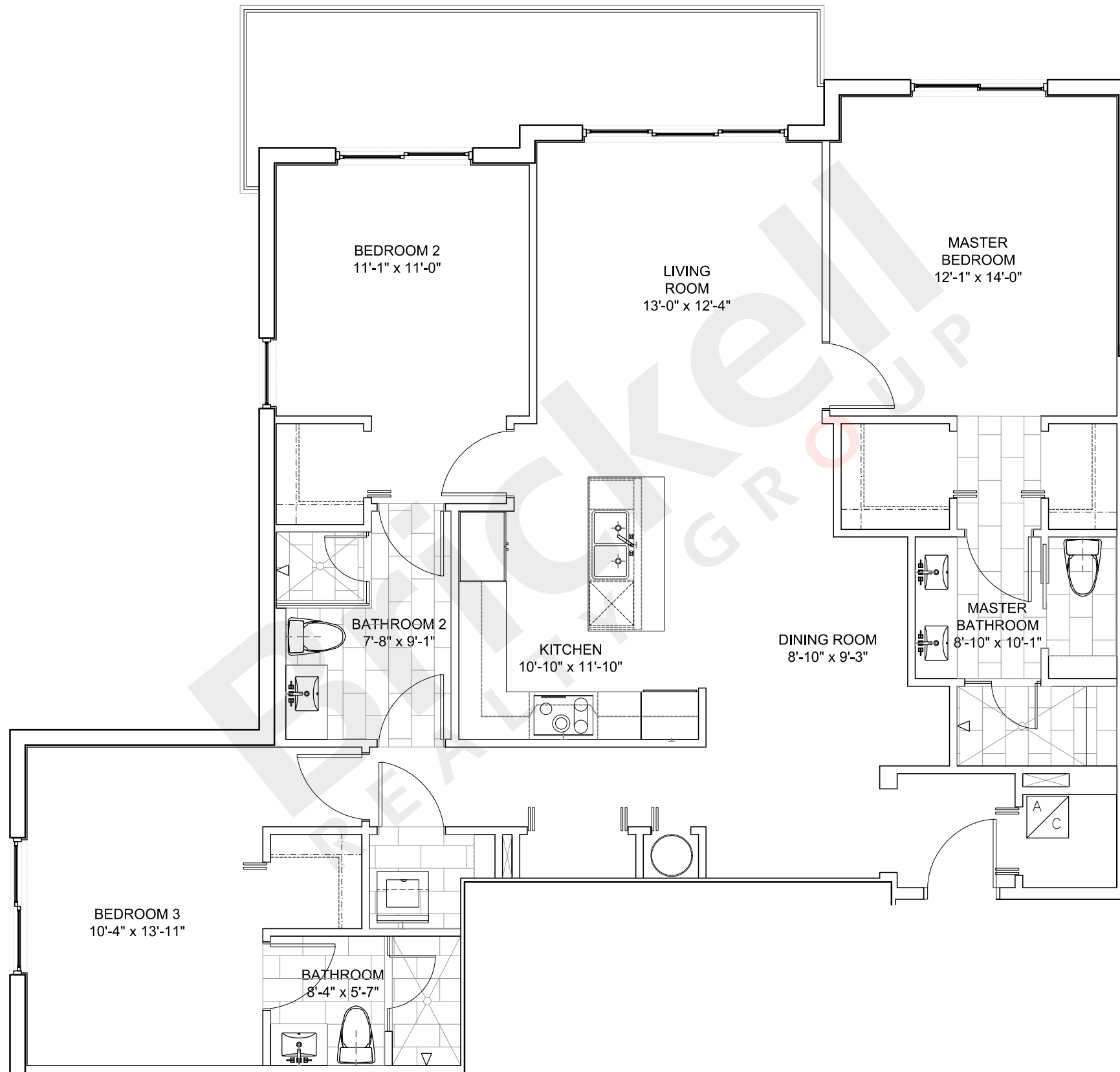


**Brickell**  
REALTY GROUP

2071 NW 112th Avenue, Miami, FL 33172

[www.brickell-realty.com/MidtownDoral1.html](http://www.brickell-realty.com/MidtownDoral1.html)

Stated dimensions are measured to the exterior boundaries of the exterior walls and the centerline of interior demising walls and in fact vary from the dimensions that would be determined by using the description and definition of the "Unit" set forth in the Declaration (which generally only includes the interior airspace between the perimeter walls and excludes interior structural components). For your reference, the area of the Unit, determined in accordance with those defined unit boundaries, is 985 to 1,242 sq. ft on Residences A, B and C and 1,331 to 1,894 sq. ft on Residences D, E and F. Note that measurements of rooms set forth on this floor plan are generally taken at the greatest points of each given room (as if the room were a perfect rectangle), without regard for any cutouts. Accordingly, the area of the actual room will typically be smaller than the product obtained by multiplying the stated length times width. All dimensions are approximate and may vary with actual construction, and all floor plans and development plans are subject to change. Oral representation cannot be relied upon as correctly stating representations of the developer.

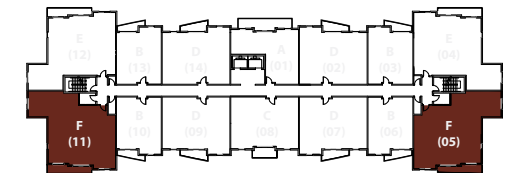




## Building 1 Residence F

3 BEDROOMS - 3.5 BATHS

	SQ FT	M <sup>2</sup>
Interior	1,552	144.2
Balcony	135	12.5
Total	1,687	156.7



**Brickell**  
REALTY GROUP

2071 NW 112th Avenue, Miami, FL 33172

[www.brickell-realty.com/MidtownDoral1.html](http://www.brickell-realty.com/MidtownDoral1.html)

Stated dimensions are measured to the exterior boundaries of the exterior walls and the centerline of interior demising walls and in fact vary from the dimensions that would be determined by using the description and definition of the "Unit" set forth in the Declaration (which generally only includes the interior airspace between the perimeter walls and excludes interior structural components). For your reference, the area of the Unit, determined in accordance with those defined unit boundaries, is 985 to 1,242 sq. ft on Residences A, B and C and 1,331 to 1,894 sq. ft on Residences D, E and F. Note that measurements of rooms set forth on this floor plan are generally taken at the greatest points of each given room (as if the room were a perfect rectangle), without regard for any cutouts. Accordingly, the area of the actual room will typically be smaller than the product obtained by multiplying the stated length times width. All dimensions are approximate and may vary with actual construction, and all floor plans and development plans are subject to change. Oral representation cannot be relied upon as correctly stating representations of the developer.

