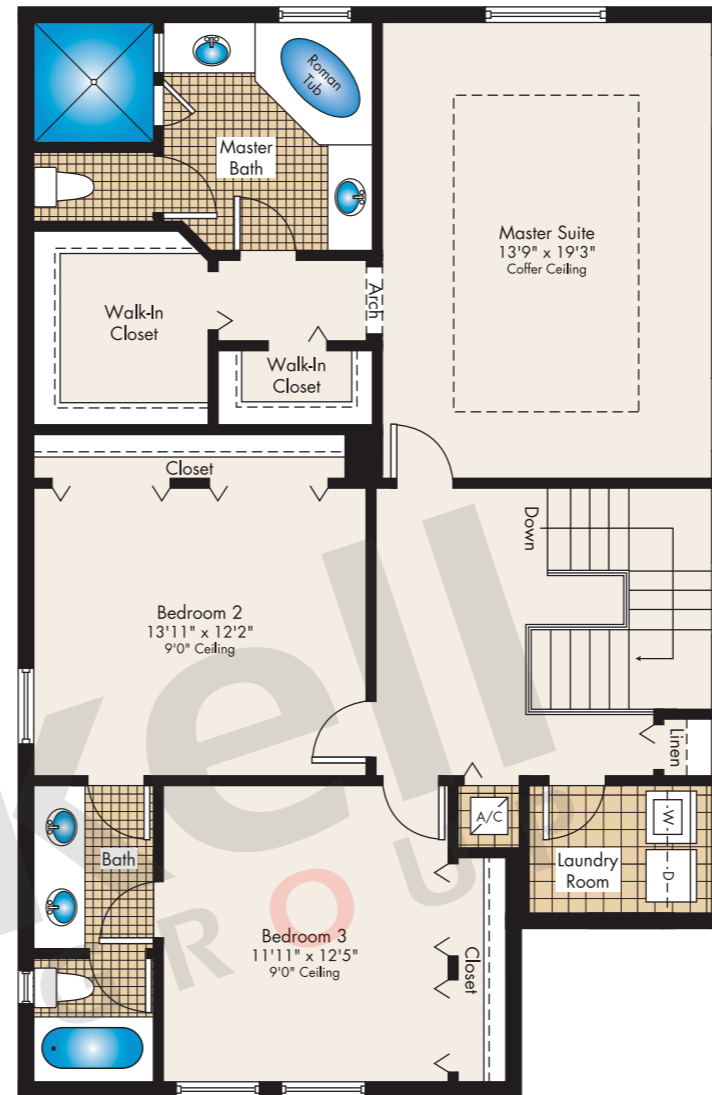
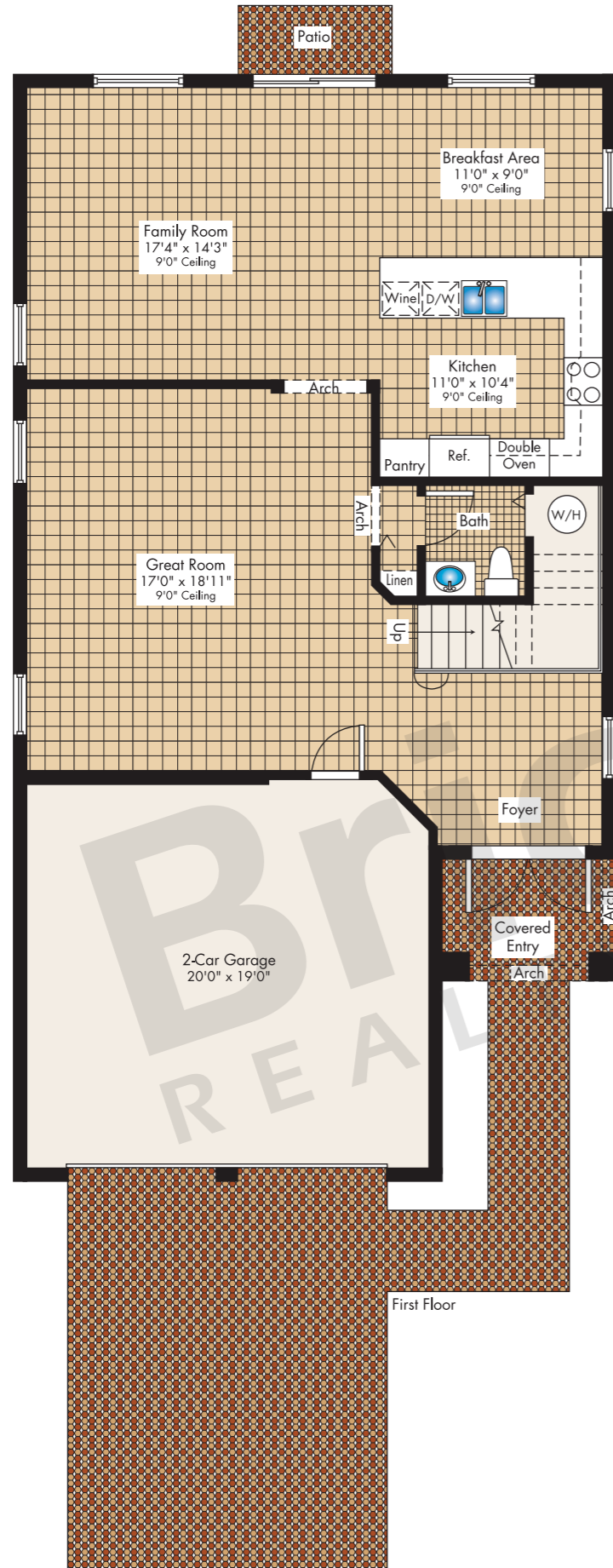


Apollo

2-Story · 3 Bedrooms · 2.5 Baths
Family Room · Breakfast Area
2-Car Garage

	SQ FT	M ²
Interior	2,363	219.5
Garage	416	38.6
Covered Entry	62	5.8
Total	2,841	263.9



Second Floor

Brickell
REALTY GROUP

2071 NW 112th Avenue, Miami, FL 33172

www.brickell-realty.com/MadisonPointe.html

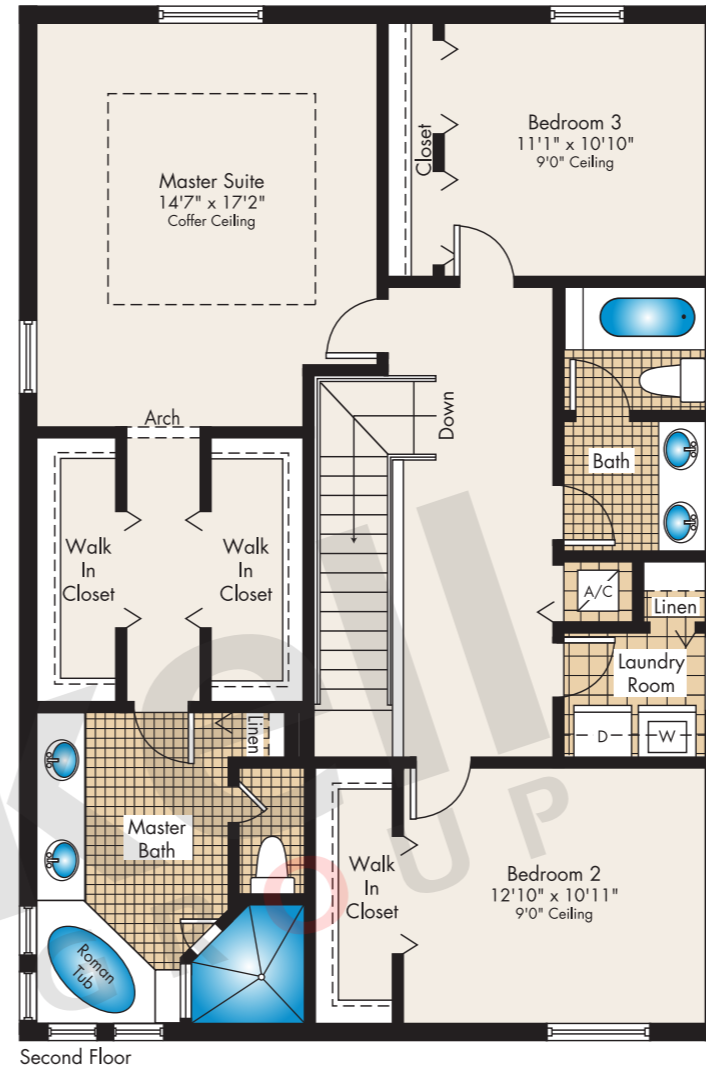
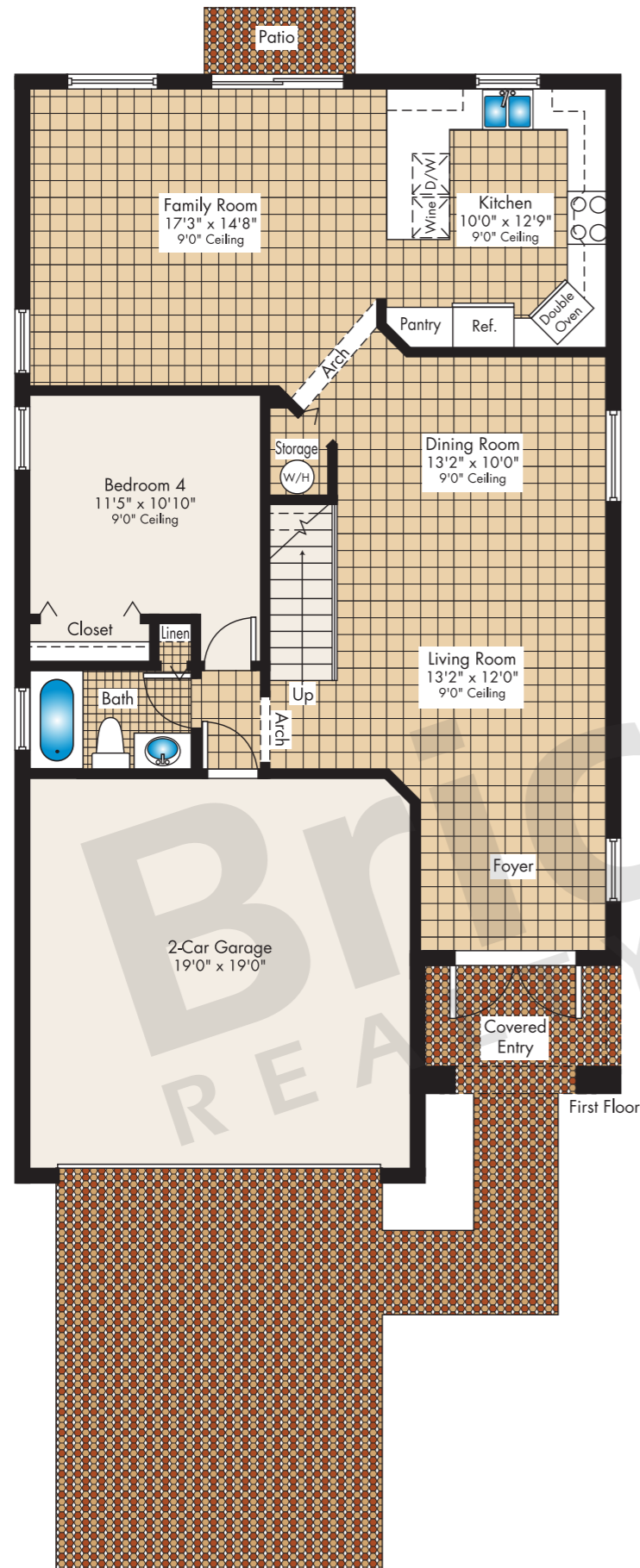
Oral representation cannot be relied upon as correctly stating representations of the developer. Pictures of homes and condos may not reflect the final products which may vary. Dimensions, specifications, improvements, rendering, plans, land uses, materials, amenities, prices, and availability are subject to change at the developer's discretion without notice.

Stated dimensions are approximate and measured to the exterior boundaries of the exterior walls and the centerline of interior demising walls which in fact vary from the dimensions that would be determined by using the description and definition of the "Unit" set forth in the Declaration (which generally only includes the interior airspace between the perimeter walls and excludes interior structural components).

Broadway

2-Story · 4 Bedrooms · 3 Baths
Family Room · 2-Car Garage

	SQ FT	M ²
Interior	2,409	223.8
Garage	403	37.4
Covered Entry	81	7.5
Total	2,893	268.7



Brickell
REALTY GROUP

2071 NW 112th Avenue, Miami, FL 33172

www.brickell-realty.com/MadisonPointe.html

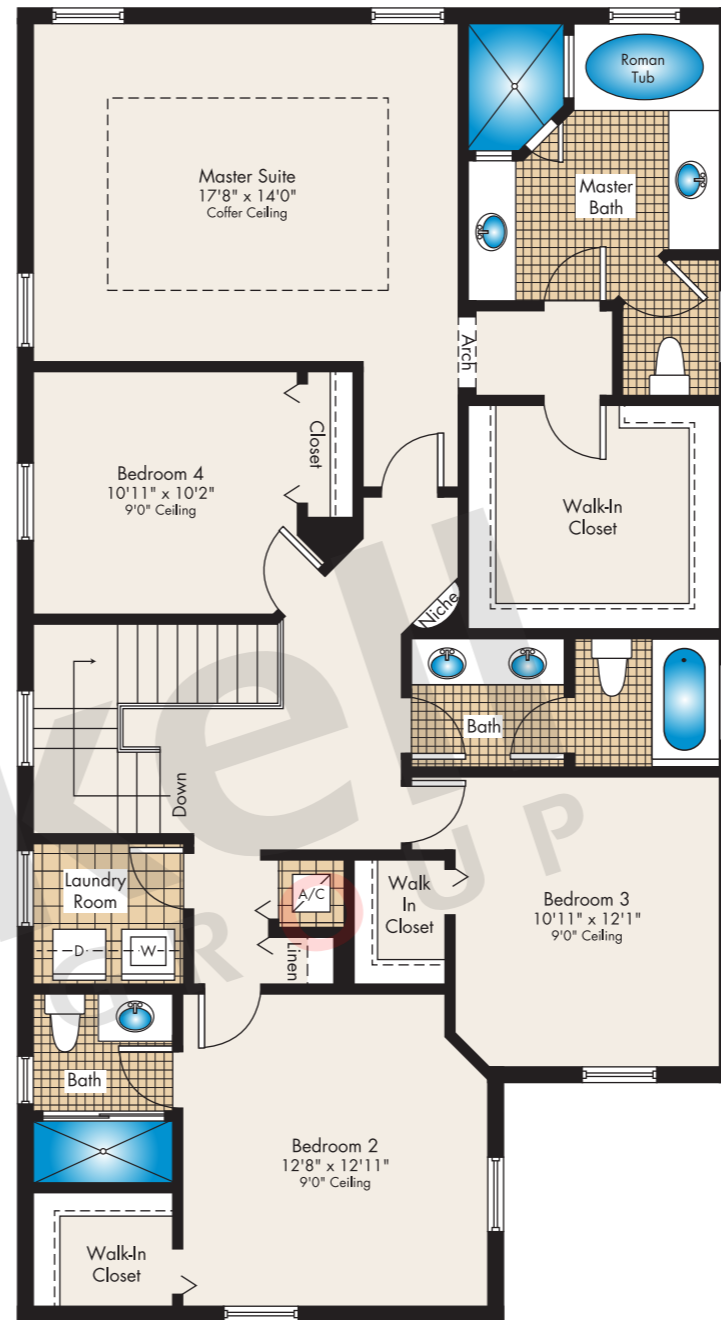
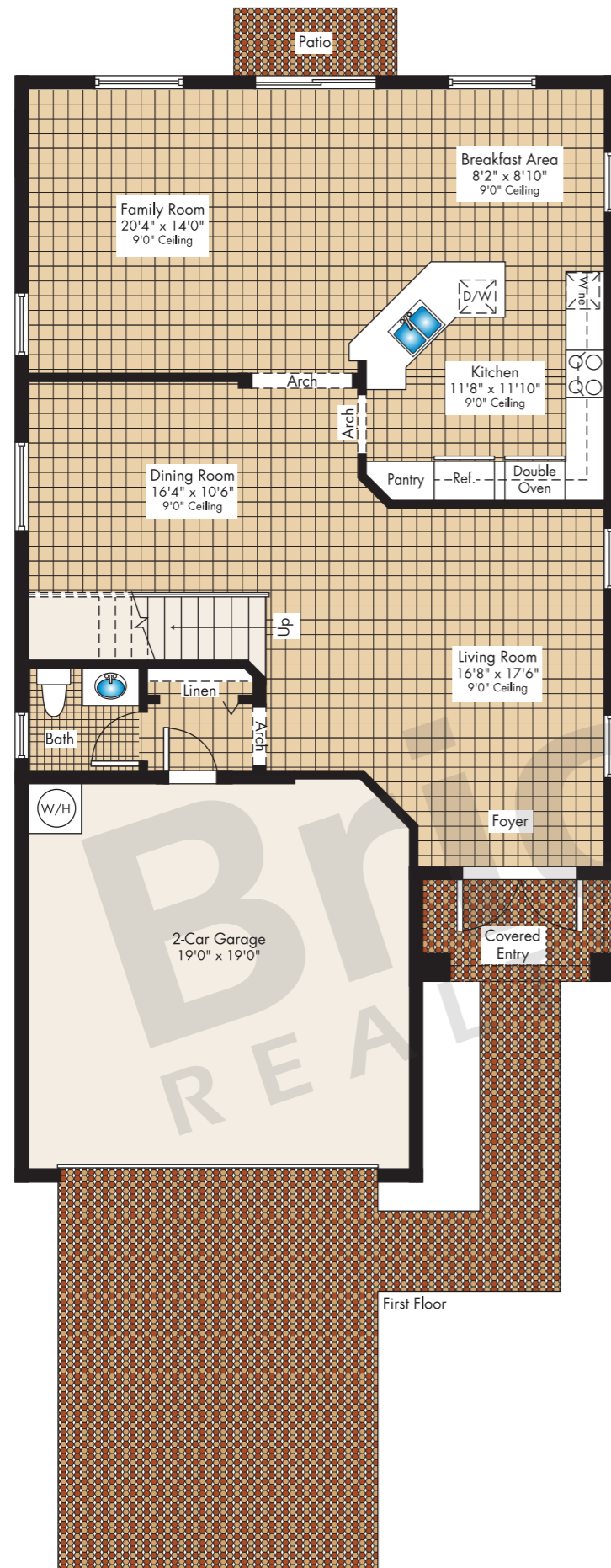
Oral representation cannot be relied upon as correctly stating representations of the developer. Pictures of homes and condos may not reflect the final products which may vary. Dimensions, specifications, improvements, rendering, plans, land uses, materials, amenities, prices, and availability are subject to change at the developer's discretion without notice.

Stated dimensions are approximate and measured to the exterior boundaries of the exterior walls and the centerline of interior demising walls which in fact vary from the dimensions that would be determined by using the description and definition of the "Unit" set forth in the Declaration (which generally only includes the interior airspace between the perimeter walls and excludes interior structural components).

Metropolitan

2-Story · 4 Bedrooms · 3.5 Baths
Family Room · Breakfast Area
2-Car Garage

	SQ FT	M ²
Interior	2,609	242.4
Garage	395	36.7
Covered Entry	48	4.5
Total	3,052	283.6



Second Floor

First Floor

Brickell
REALTY GROUP

2071 NW 112th Avenue, Miami, FL 33172

www.brickell-realty.com/MadisonPointe.html

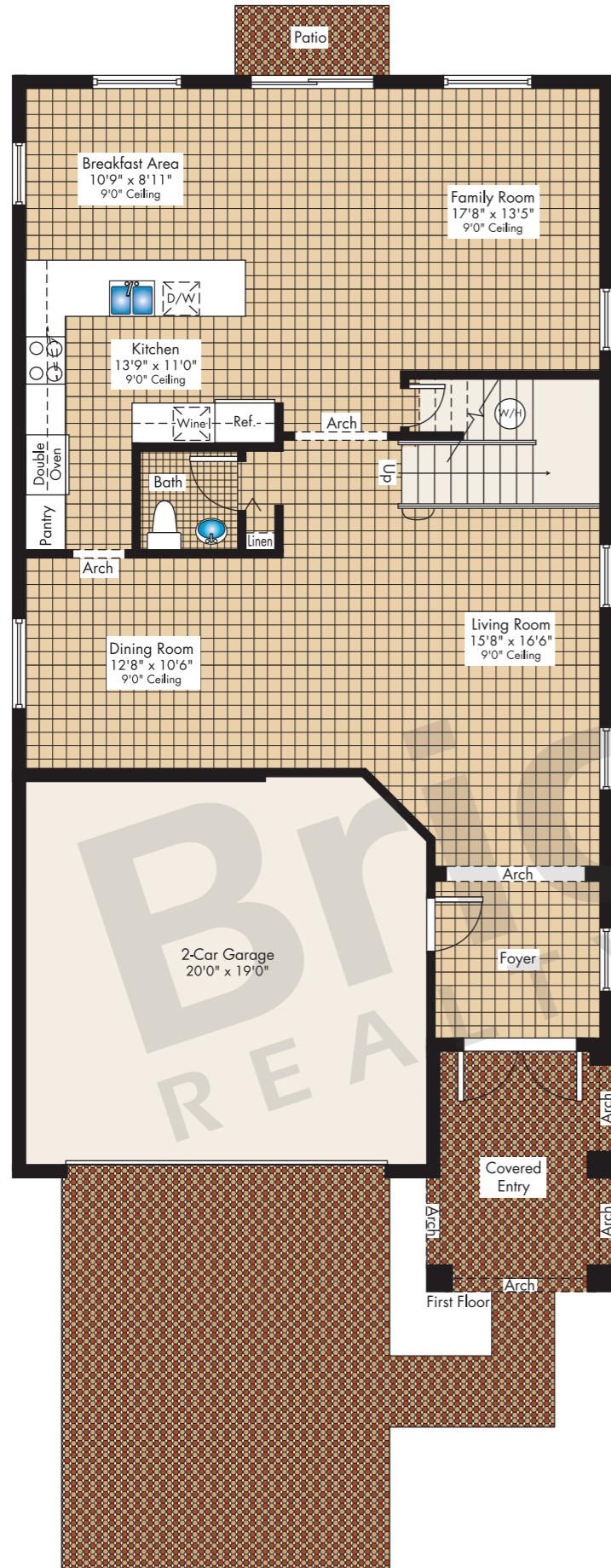
Oral representation cannot be relied upon as correctly stating representations of the developer. Pictures of homes and condos may not reflect the final products which may vary. Dimensions, specifications, improvements, rendering, plans, land uses, materials, amenities, prices, and availability are subject to change at the developer's discretion without notice.

Stated dimensions are approximate and measured to the exterior boundaries of the exterior walls and the centerline of interior demising walls which in fact vary from the dimensions that would be determined by using the description and definition of the "Unit" set forth in the Declaration (which generally only includes the interior airspace between the perimeter walls and excludes interior structural components).

Rockefeller

2-Story · 5 Bedrooms · 4.5 Baths
Family Room · Breakfast Area
2-Car Garage

	SQ FT	M ²
Interior	2,776	257.9
Garage	408	37.9
Covered Entry	104	9.7
Total	3,288	305.5



Second Floor

Brickell
REALTY GROUP

2071 NW 112th Avenue, Miami, FL 33172

www.brickell-realty.com/MadisonPointe.html

Oral representation cannot be relied upon as correctly stating representations of the developer. Pictures of homes and condos may not reflect the final products which may vary. Dimensions, specifications, improvements, rendering, plans, land uses, materials, amenities, prices, and availability are subject to change at the developer's discretion without notice.

Stated dimensions are approximate and measured to the exterior boundaries of the exterior walls and the centerline of interior demising walls which in fact vary from the dimensions that would be determined by using the description and definition of the "Unit" set forth in the Declaration (which generally only includes the interior airspace between the perimeter walls and excludes interior structural components).