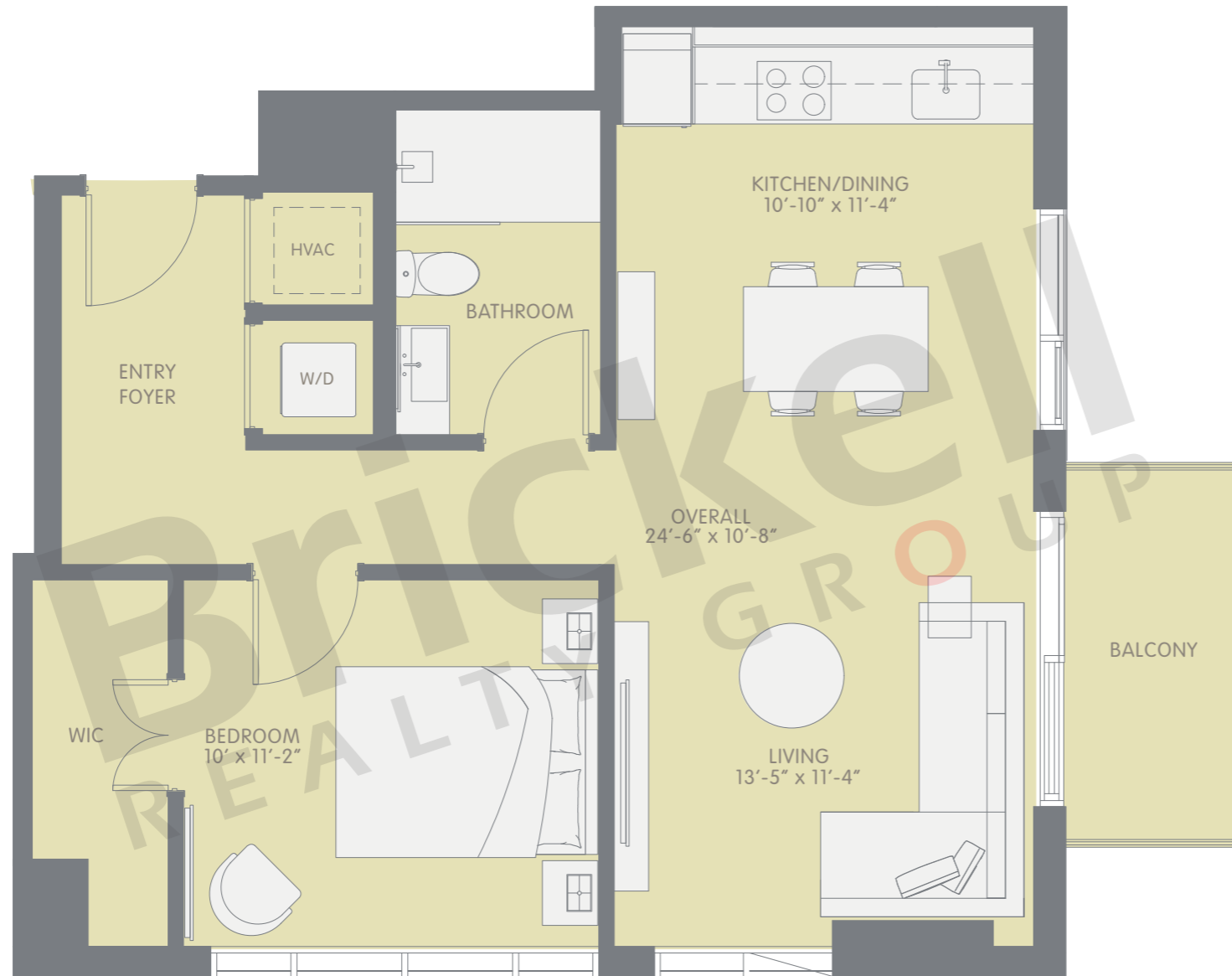
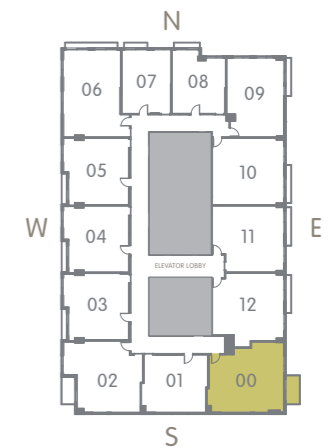


PAD 00

1 Bedroom · 1 Bath



	SQ FT	M ²
Interior	664	61.7
Balcony	0	0.0
Total	664	61.7



Brickell

REALTY GROUP

2071 NW 112th Avenue, Miami, FL 33172

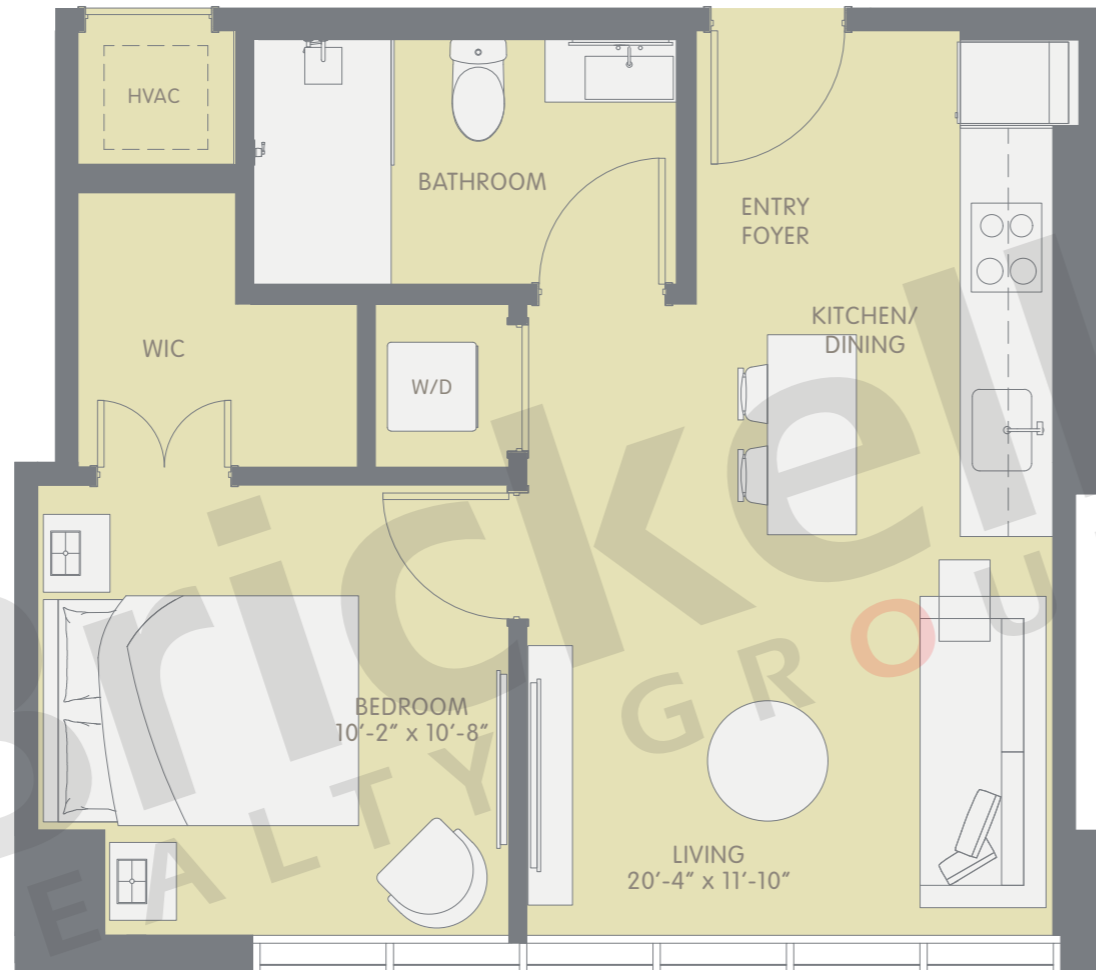
www.brickell-realty.com/YotelPad.html

Oral representation cannot be relied upon as correctly stating representations of the developer. Pictures of homes and condos may not reflect the final products which may vary. Dimensions, specifications, improvements, rendering, plans, land uses, materials, amenities, prices, and availability are subject to change at the developer's discretion without notice.

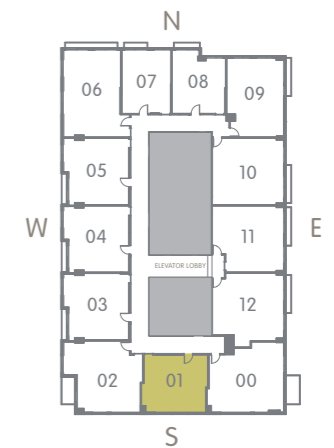
Stated dimensions are approximate and measured to the exterior boundaries of the exterior walls and the centerline of interior demising walls which in fact vary from the dimensions that would be determined by using the description and definition of the "Unit" set forth in the Declaration (which generally only includes the interior airspace between the perimeter walls and excludes interior structural components).

PAD 01

1 Bedroom · 1 Bath



	SQ FT	M ²
Interior	493	45.8
Balcony	0	0.0
Total	493	45.8



Brickell

REALTY GROUP

2071 NW 112th Avenue, Miami, FL 33172

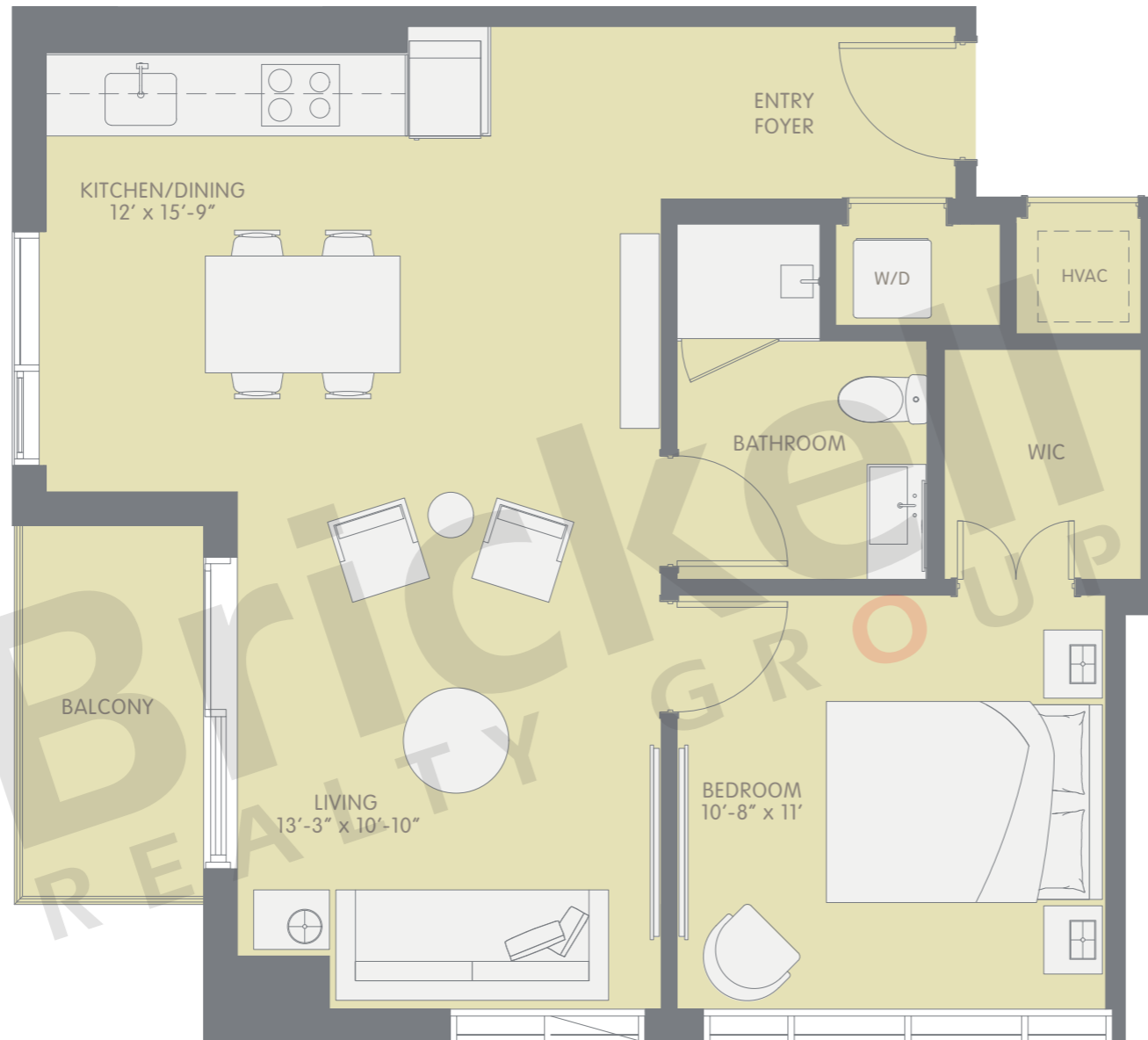
www.brickell-realty.com/YotelPad.html

Oral representation cannot be relied upon as correctly stating representations of the developer. Pictures of homes and condos may not reflect the final products which may vary. Dimensions, specifications, improvements, rendering, plans, land uses, materials, amenities, prices, and availability are subject to change at the developer's discretion without notice.

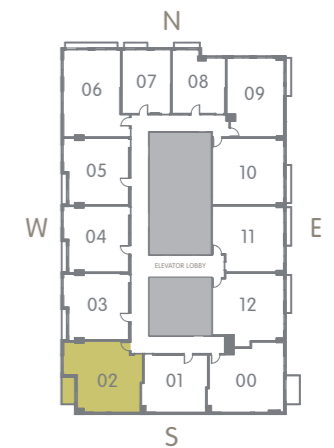
Stated dimensions are approximate and measured to the exterior boundaries of the exterior walls and the centerline of interior demising walls which in fact vary from the dimensions that would be determined by using the description and definition of the "Unit" set forth in the Declaration (which generally only includes the interior airspace between the perimeter walls and excludes interior structural components).

PAD 02

1 Bedroom · 1 Bath



	SQ FT	M ²
Interior	669	62.2
Balcony	0	0.0
Total	669	62.2



Brickell
REALTY GROUP

2071 NW 112th Avenue, Miami, FL 33172

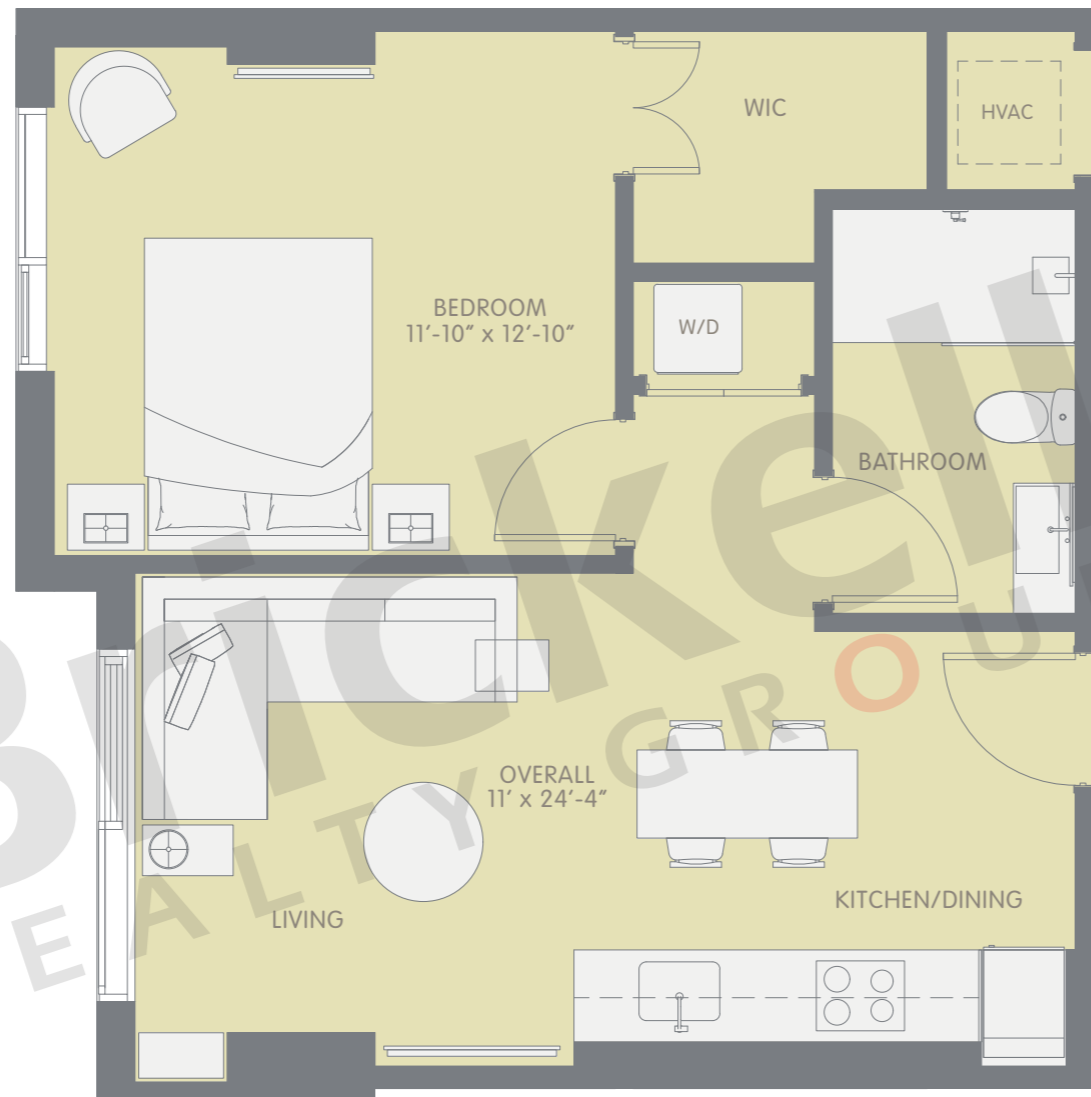
www.brickell-realty.com/YotelPad.html

Oral representation cannot be relied upon as correctly stating representations of the developer. Pictures of homes and condos may not reflect the final products which may vary. Dimensions, specifications, improvements, rendering, plans, land uses, materials, amenities, prices, and availability are subject to change at the developer's discretion without notice.

Stated dimensions are approximate and measured to the exterior boundaries of the exterior walls and the centerline of interior demising walls which in fact vary from the dimensions that would be determined by using the description and definition of the "Unit" set forth in the Declaration (which generally only includes the interior airspace between the perimeter walls and excludes interior structural components).

PAD 03 / 04 / 05

1 Bedroom · 1 Bath



	SQ FT	M ²
Interior	557	51.7
Balcony	0	0.0
Total	557	51.7



Brickell

REALTY GROUP

2071 NW 112th Avenue, Miami, FL 33172

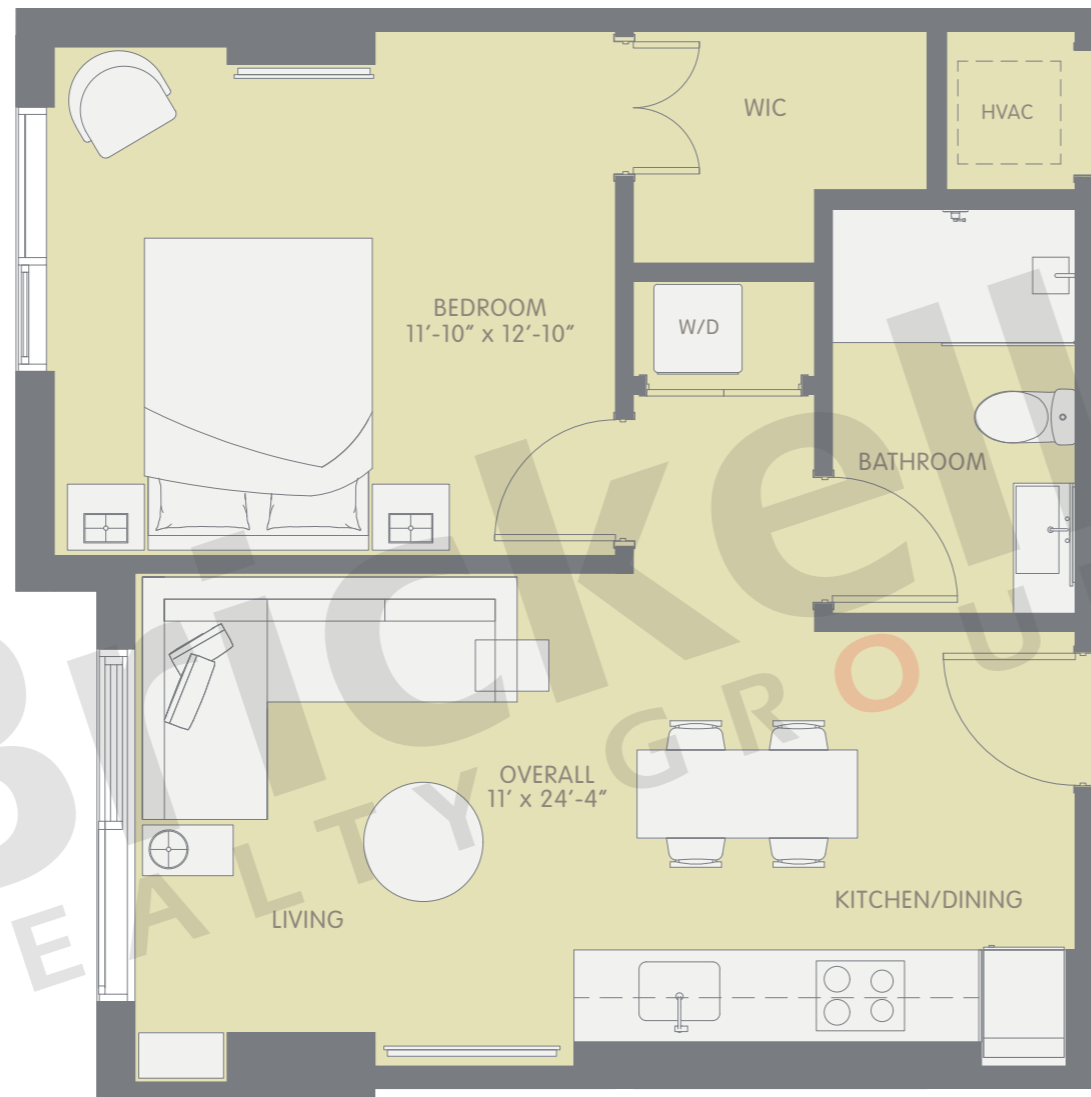
www.brickell-realty.com/YotelPad.html

Oral representation cannot be relied upon as correctly stating representations of the developer. Pictures of homes and condos may not reflect the final products which may vary. Dimensions, specifications, improvements, rendering, plans, land uses, materials, amenities, prices, and availability are subject to change at the developer's discretion without notice.

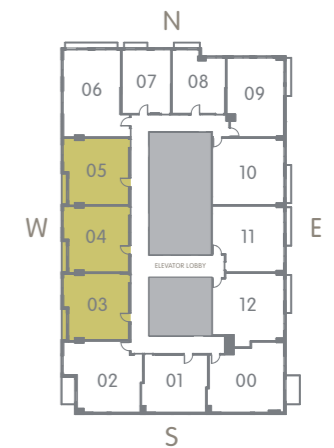
Stated dimensions are approximate and measured to the exterior boundaries of the exterior walls and the centerline of interior demising walls which in fact vary from the dimensions that would be determined by using the description and definition of the "Unit" set forth in the Declaration (which generally only includes the interior airspace between the perimeter walls and excludes interior structural components).

PAD 03 / 04 / 05

1 Bedroom · 1 Bath



	SQ FT	M ²
Interior	557	51.7
Balcony	0	0.0
Total	557	51.7



Brickell

REALTY GROUP

2071 NW 112th Avenue, Miami, FL 33172

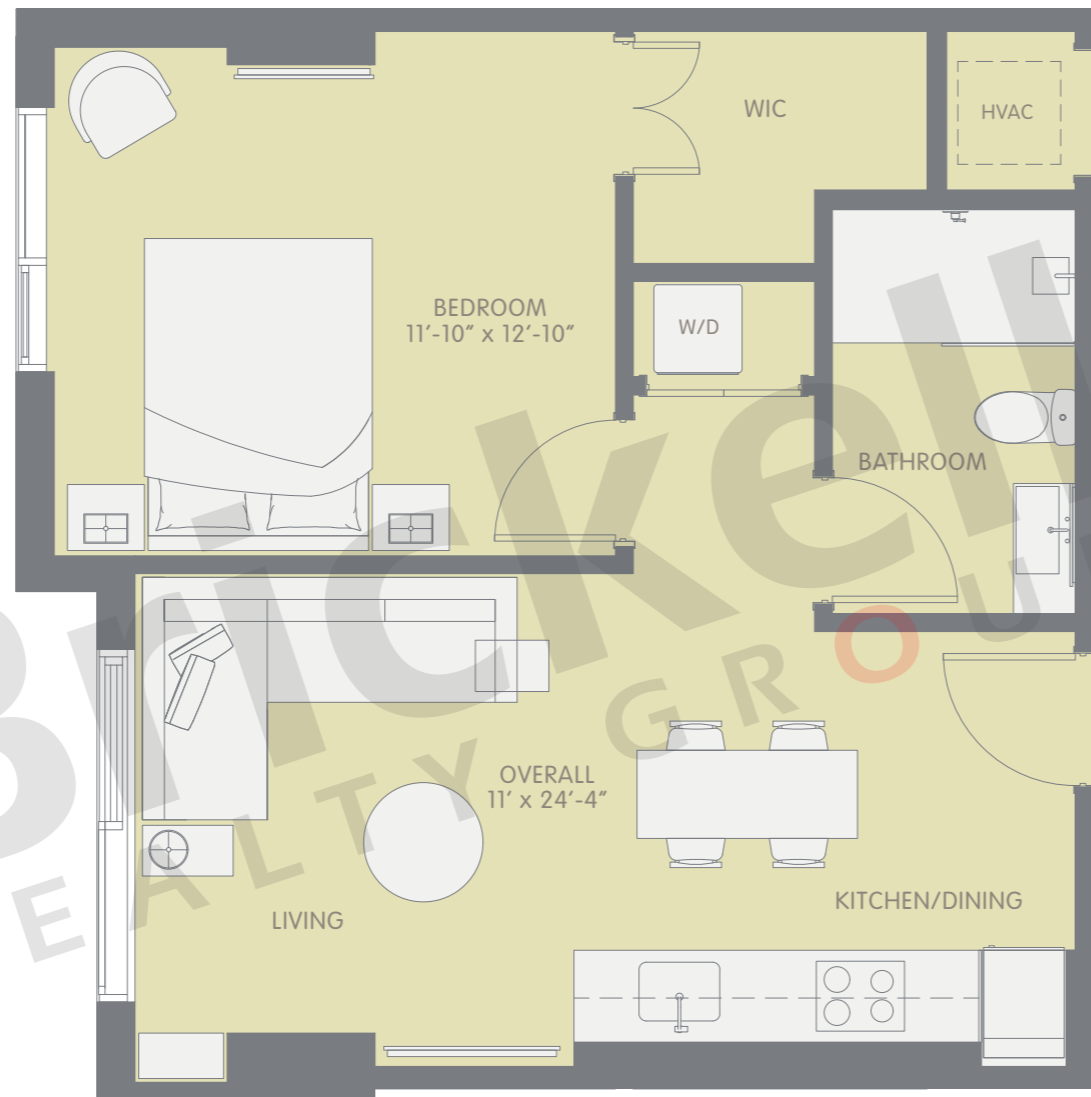
www.brickell-realty.com/YotelPad.html

Oral representation cannot be relied upon as correctly stating representations of the developer. Pictures of homes and condos may not reflect the final products which may vary. Dimensions, specifications, improvements, rendering, plans, land uses, materials, amenities, prices, and availability are subject to change at the developer's discretion without notice.

Stated dimensions are approximate and measured to the exterior boundaries of the exterior walls and the centerline of interior demising walls which in fact vary from the dimensions that would be determined by using the description and definition of the "Unit" set forth in the Declaration (which generally only includes the interior airspace between the perimeter walls and excludes interior structural components).

PAD 03 / 04 / 05

1 Bedroom · 1 Bath



	SQ FT	M ²
Interior	557	51.7
Balcony	0	0.0
Total	557	51.7



Brickell

REALTY GROUP

2071 NW 112th Avenue, Miami, FL 33172

www.brickell-realty.com/YotelPad.html

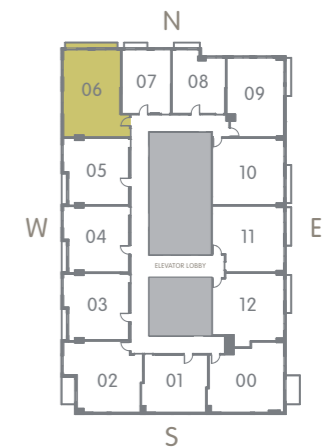
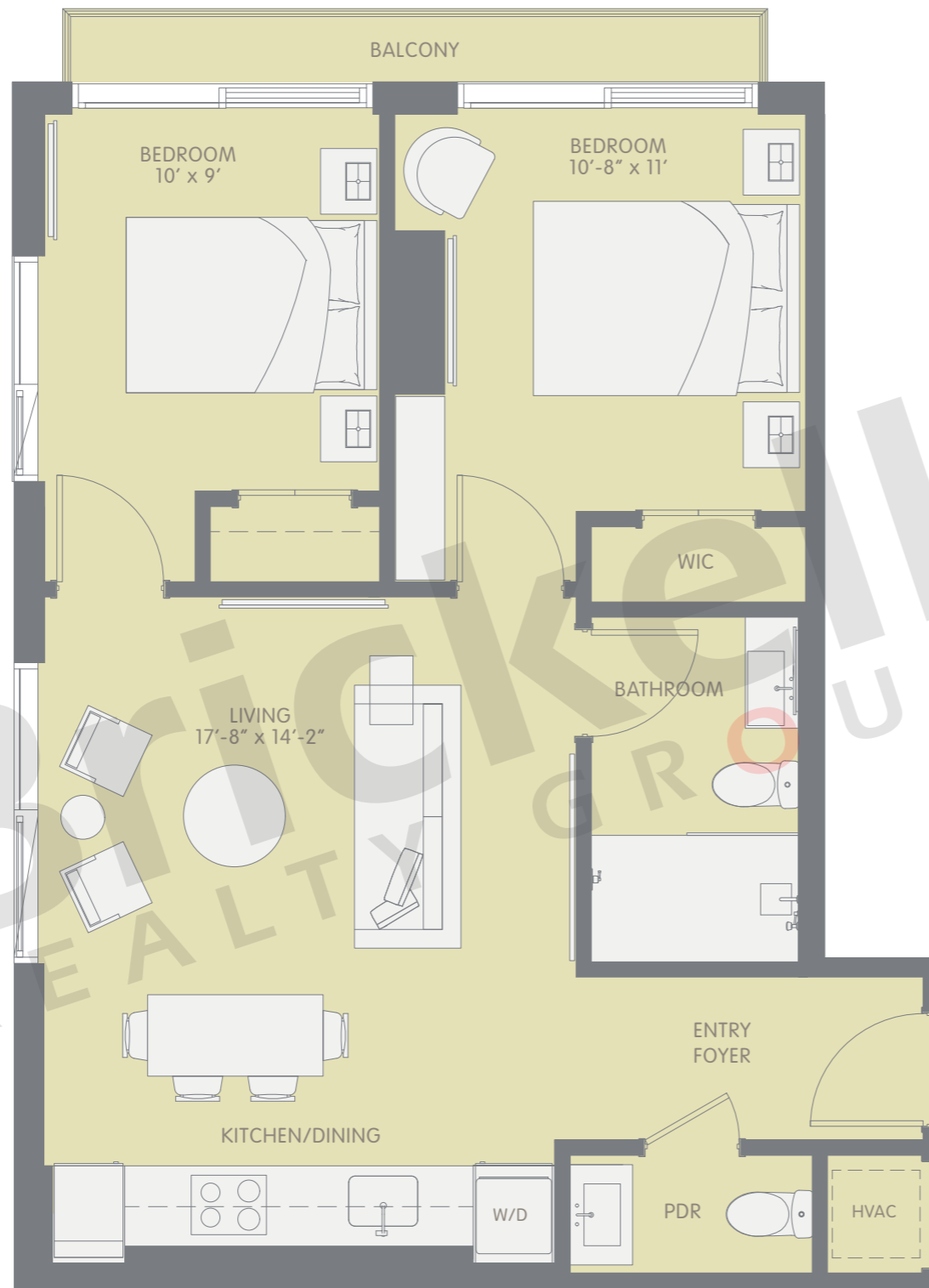
Oral representation cannot be relied upon as correctly stating representations of the developer. Pictures of homes and condos may not reflect the final products which may vary. Dimensions, specifications, improvements, rendering, plans, land uses, materials, amenities, prices, and availability are subject to change at the developer's discretion without notice.

Stated dimensions are approximate and measured to the exterior boundaries of the exterior walls and the centerline of interior demising walls which in fact vary from the dimensions that would be determined by using the description and definition of the "Unit" set forth in the Declaration (which generally only includes the interior airspace between the perimeter walls and excludes interior structural components).

PAD 06

2 Bedrooms · 1.5 Baths

	SQ FT	M ²
Interior	708	65.8
Balcony	0	0.0
Total	708	65.8



Brickell
REALTY GROUP

2071 NW 112th Avenue, Miami, FL 33172

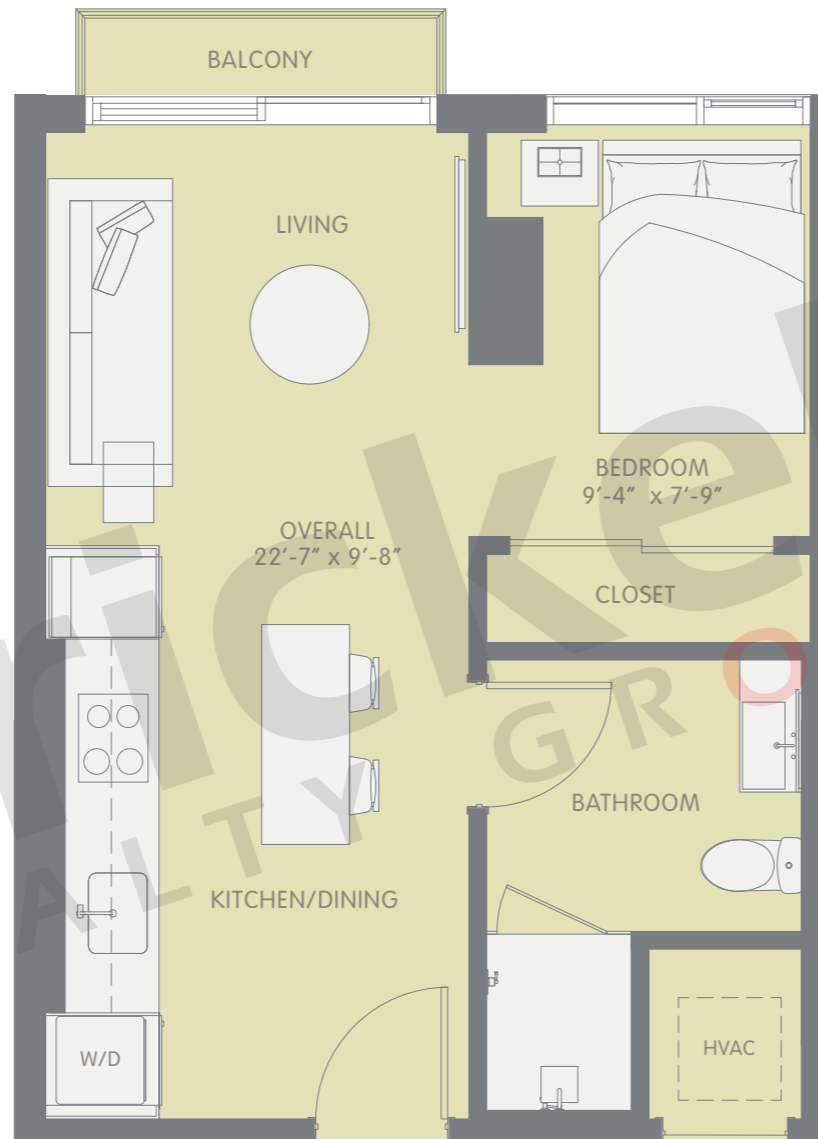
www.brickell-realty.com/YotelPad.html

Oral representation cannot be relied upon as correctly stating representations of the developer. Pictures of homes and condos may not reflect the final products which may vary. Dimensions, specifications, improvements, rendering, plans, land uses, materials, amenities, prices, and availability are subject to change at the developer's discretion without notice.

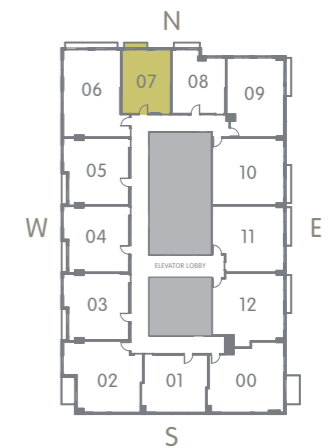
Stated dimensions are approximate and measured to the exterior boundaries of the exterior walls and the centerline of interior demising walls which in fact vary from the dimensions that would be determined by using the description and definition of the "Unit" set forth in the Declaration (which generally only includes the interior airspace between the perimeter walls and excludes interior structural components).

PAD 07

Studio · 1 Bath



	SQ FT	M ²
Interior	417	38.7
Balcony	0	0.0
Total	417	38.7



Brickell
REALTY GROUP

2071 NW 112th Avenue, Miami, FL 33172

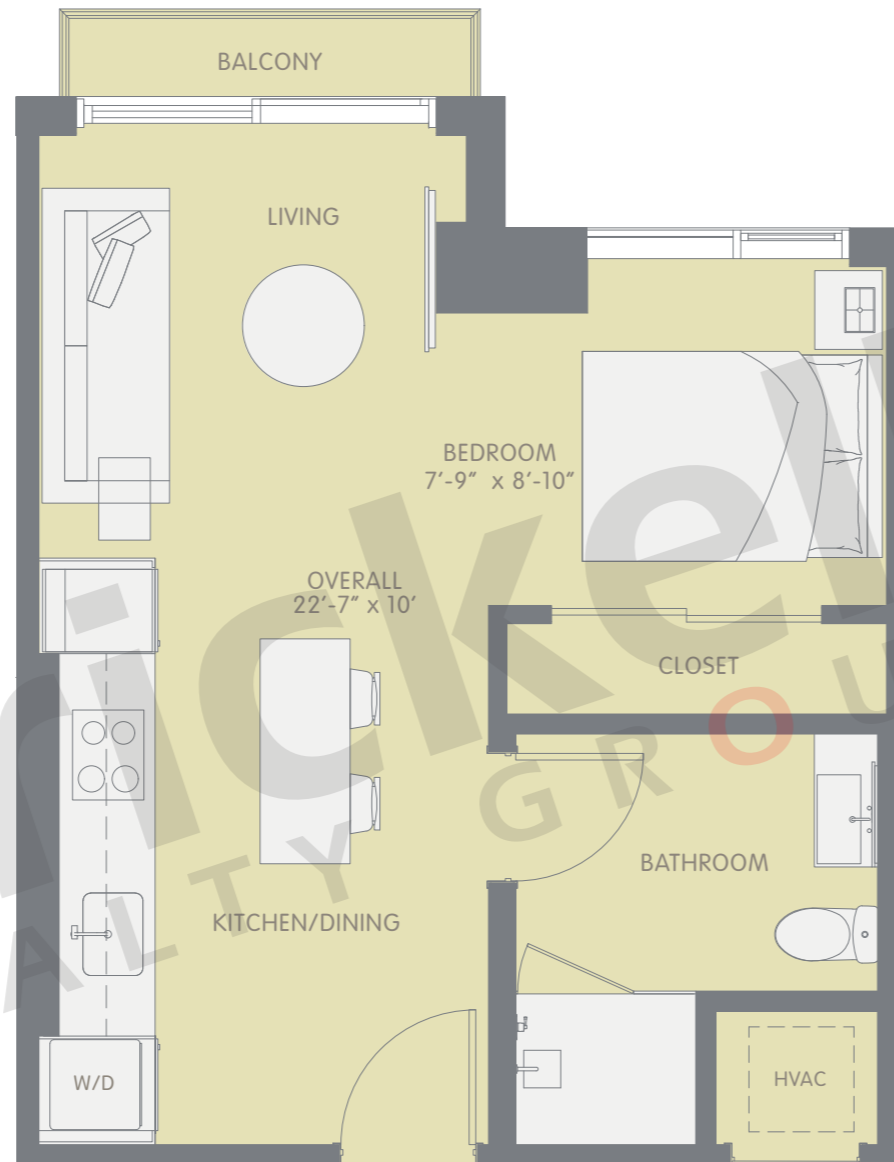
www.brickell-realty.com/YotelPad.html

Oral representation cannot be relied upon as correctly stating representations of the developer. Pictures of homes and condos may not reflect the final products which may vary. Dimensions, specifications, improvements, rendering, plans, land uses, materials, amenities, prices, and availability are subject to change at the developer's discretion without notice.

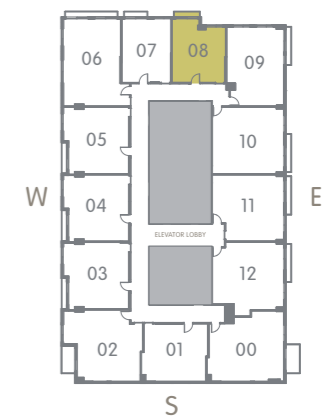
Stated dimensions are approximate and measured to the exterior boundaries of the exterior walls and the centerline of interior demising walls which in fact vary from the dimensions that would be determined by using the description and definition of the "Unit" set forth in the Declaration (which generally only includes the interior airspace between the perimeter walls and excludes interior structural components).

PAD 08

Studio · 1 Bath



	SQ FT	M ²
Interior	426	39.6
Balcony	0	0.0
Total	426	39.6



Brickell

REALTY GROUP

2071 NW 112th Avenue, Miami, FL 33172

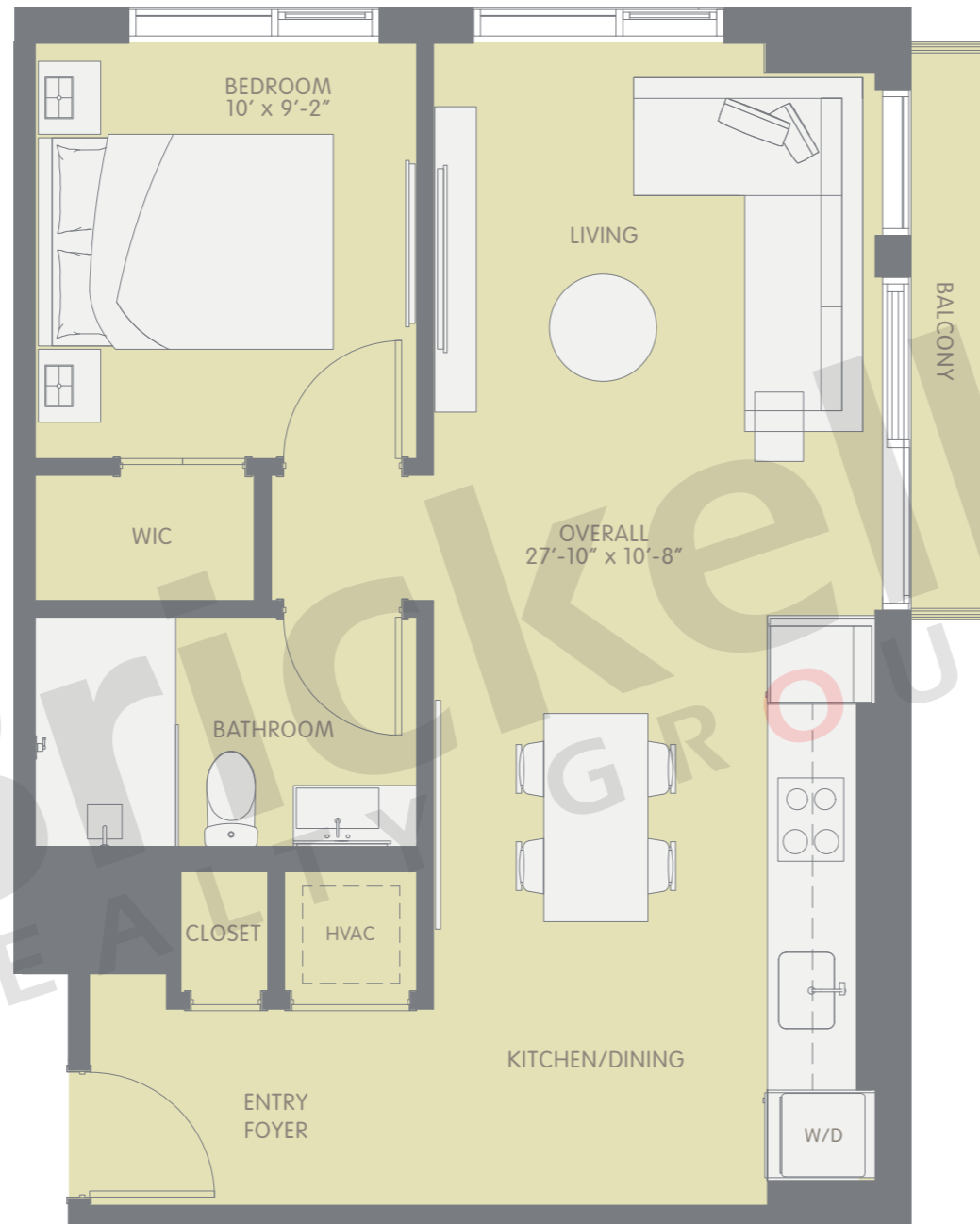
www.brickell-realty.com/YotelPad.html

Oral representation cannot be relied upon as correctly stating representations of the developer. Pictures of homes and condos may not reflect the final products which may vary. Dimensions, specifications, improvements, rendering, plans, land uses, materials, amenities, prices, and availability are subject to change at the developer's discretion without notice.

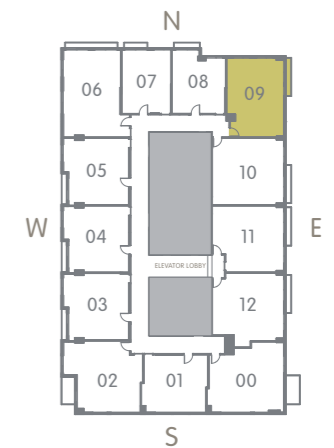
Stated dimensions are approximate and measured to the exterior boundaries of the exterior walls and the centerline of interior demising walls which in fact vary from the dimensions that would be determined by using the description and definition of the "Unit" set forth in the Declaration (which generally only includes the interior airspace between the perimeter walls and excludes interior structural components).

PAD 09

1 Bedroom · 1 Bath



	SQ FT	M ²
Interior	600	55.7
Balcony	0	0.0
Total	600	55.7



Brickell
REALTY GROUP

2071 NW 112th Avenue, Miami, FL 33172

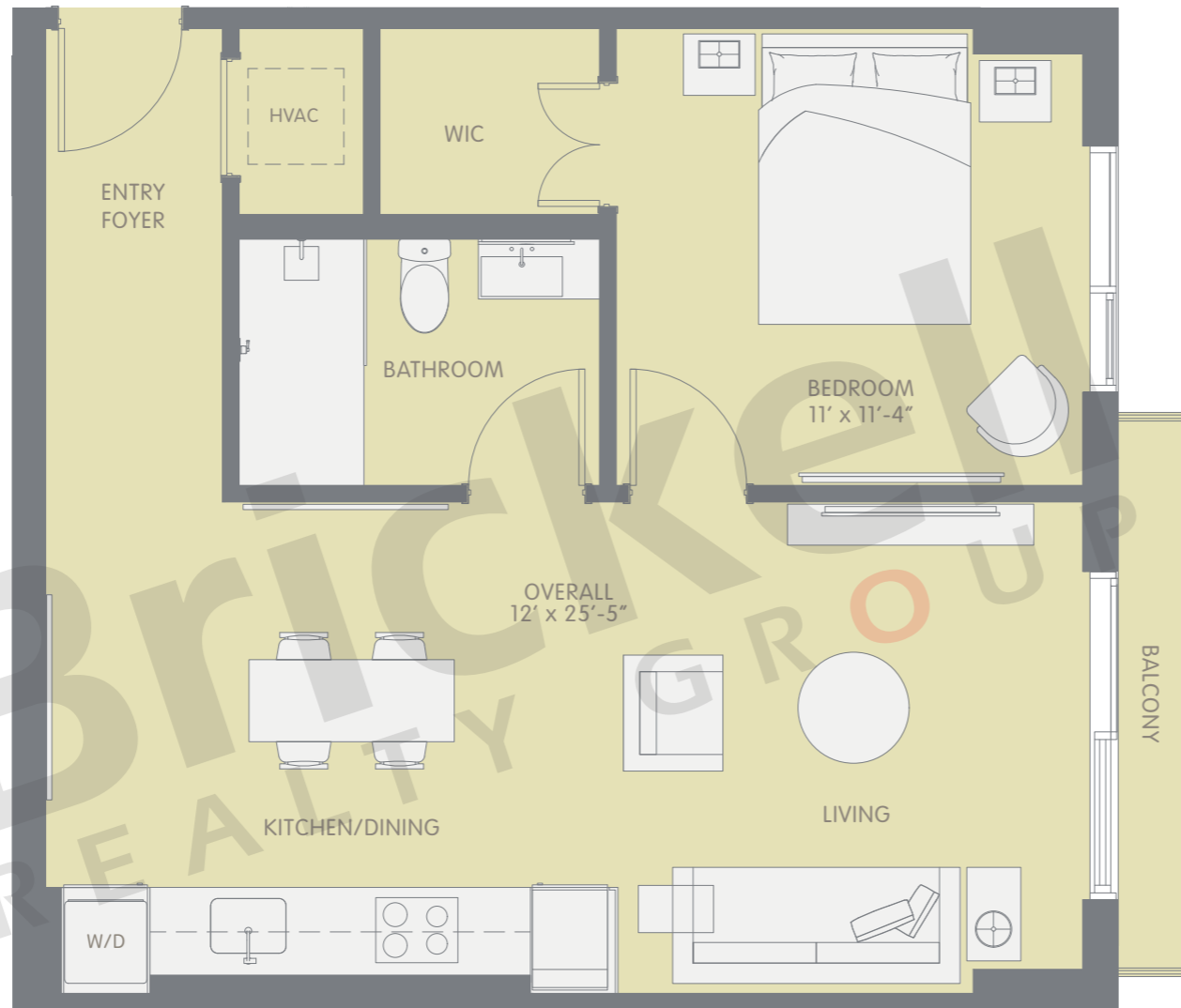
www.brickell-realty.com/YotelPad.html

Oral representation cannot be relied upon as correctly stating representations of the developer. Pictures of homes and condos may not reflect the final products which may vary. Dimensions, specifications, improvements, rendering, plans, land uses, materials, amenities, prices, and availability are subject to change at the developer's discretion without notice.

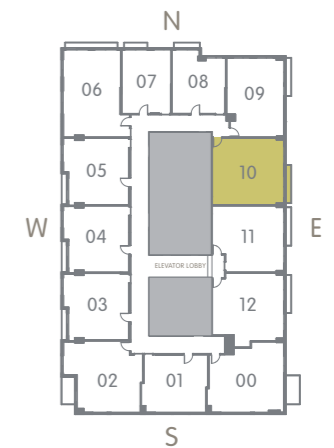
Stated dimensions are approximate and measured to the exterior boundaries of the exterior walls and the centerline of interior demising walls which in fact vary from the dimensions that would be determined by using the description and definition of the "Unit" set forth in the Declaration (which generally only includes the interior airspace between the perimeter walls and excludes interior structural components).

PAD 10

1 Bedroom · 1 Bath



	SQ FT	M ²
Interior	626	58.2
Balcony	0	0.0
Total	626	58.2



Brickell

REALTY GROUP

2071 NW 112th Avenue, Miami, FL 33172

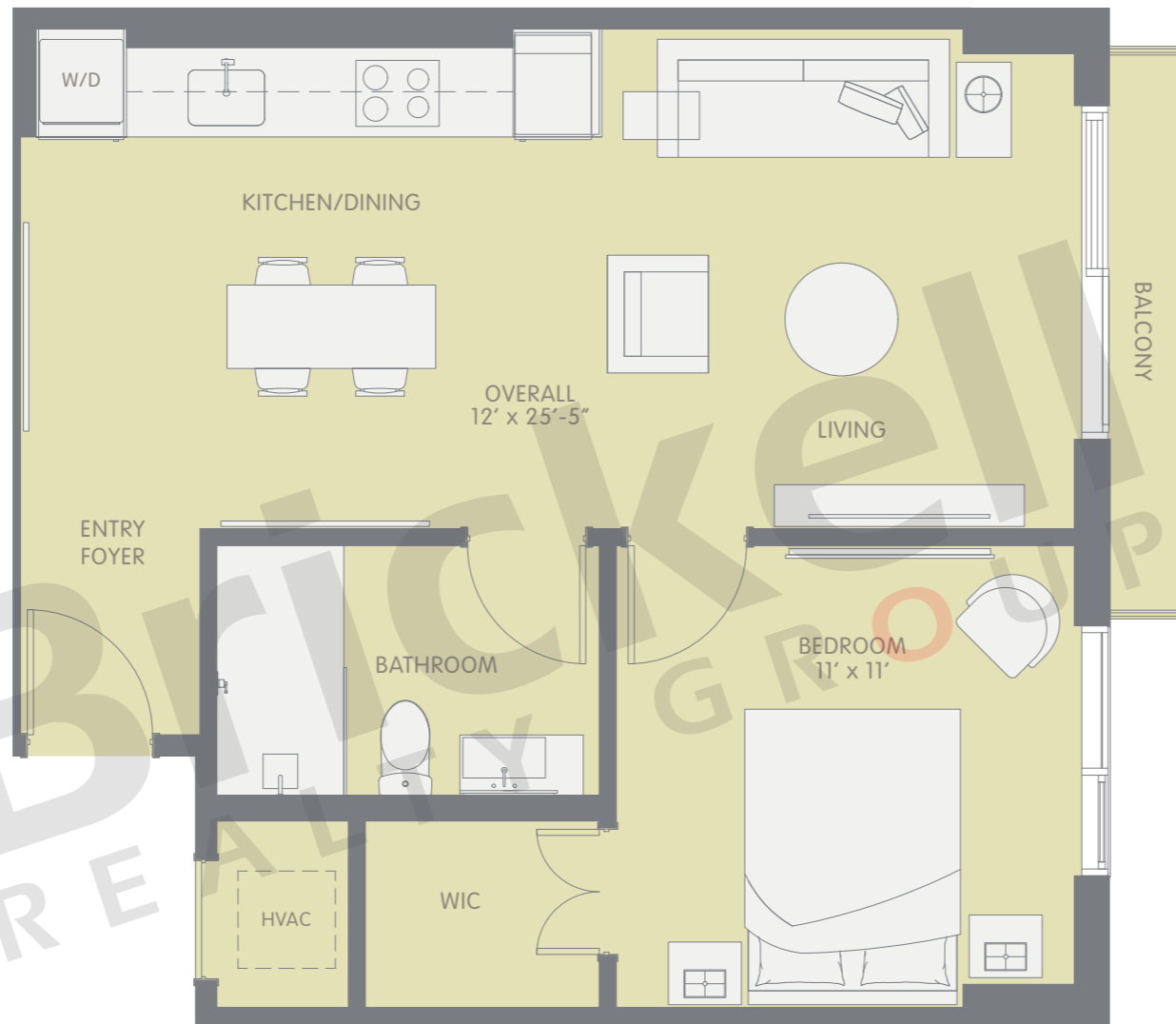
www.brickell-realty.com/YotelPad.html

Oral representation cannot be relied upon as correctly stating representations of the developer. Pictures of homes and condos may not reflect the final products which may vary. Dimensions, specifications, improvements, rendering, plans, land uses, materials, amenities, prices, and availability are subject to change at the developer's discretion without notice.

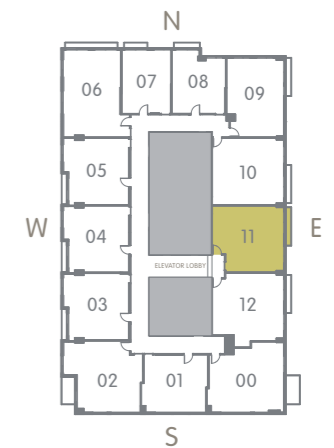
Stated dimensions are approximate and measured to the exterior boundaries of the exterior walls and the centerline of interior demising walls which in fact vary from the dimensions that would be determined by using the description and definition of the "Unit" set forth in the Declaration (which generally only includes the interior airspace between the perimeter walls and excludes interior structural components).

PAD 11

1 Bedroom · 1 Bath



	SQ FT	M ²
Interior	594	55.2
Balcony	0	0.0
Total	594	55.2



Brickell

REALTY GROUP

2071 NW 112th Avenue, Miami, FL 33172

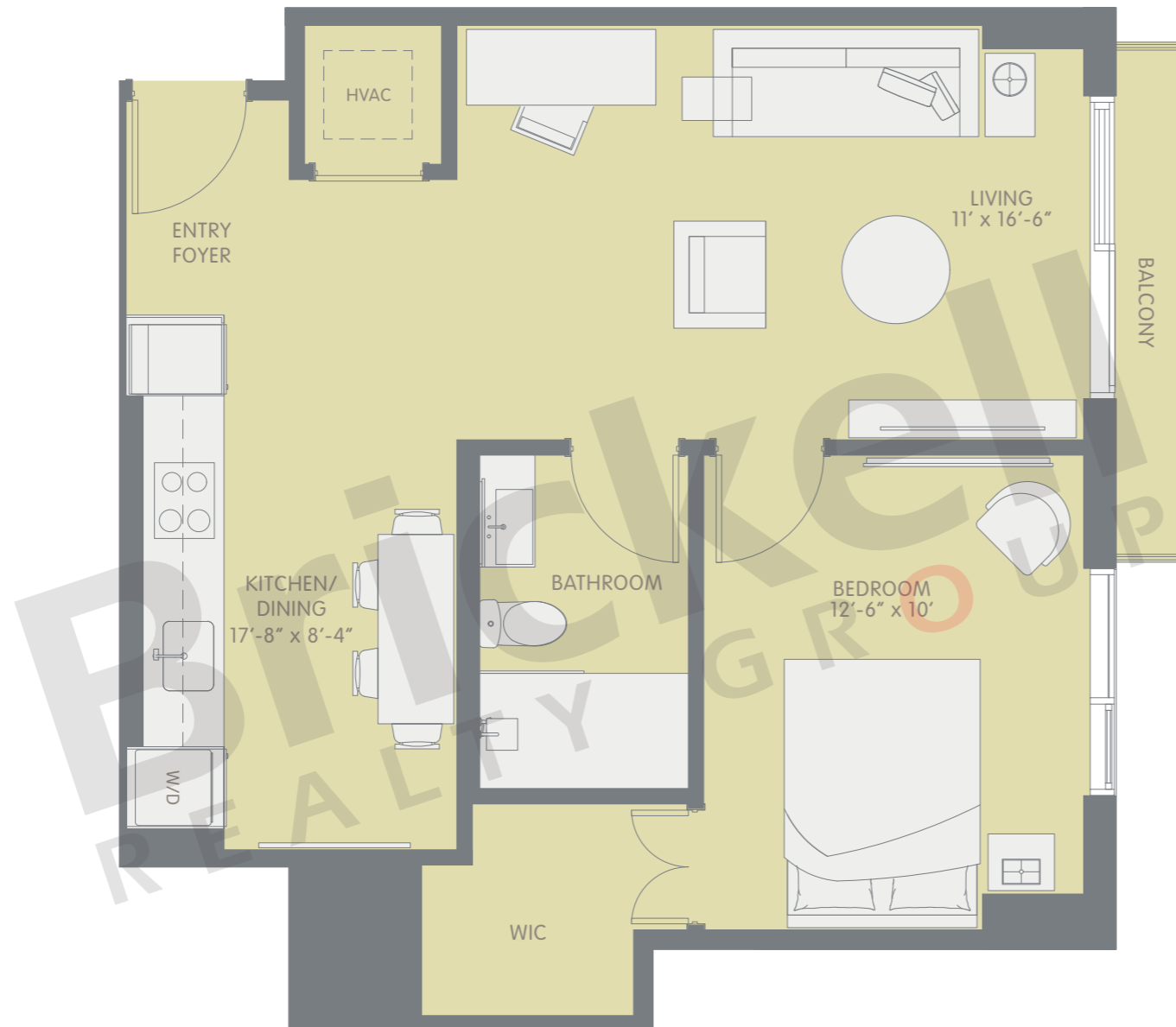
www.brickell-realty.com/YotelPad.html

Oral representation cannot be relied upon as correctly stating representations of the developer. Pictures of homes and condos may not reflect the final products which may vary. Dimensions, specifications, improvements, rendering, plans, land uses, materials, amenities, prices, and availability are subject to change at the developer's discretion without notice.

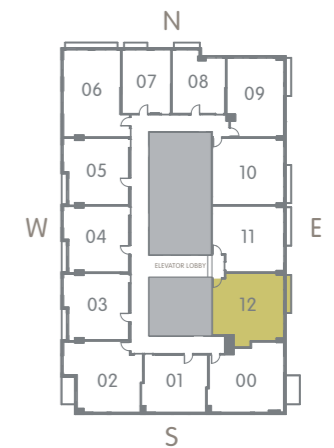
Stated dimensions are approximate and measured to the exterior boundaries of the exterior walls and the centerline of interior demising walls which in fact vary from the dimensions that would be determined by using the description and definition of the "Unit" set forth in the Declaration (which generally only includes the interior airspace between the perimeter walls and excludes interior structural components).

PAD 12

1 Bedroom · 1 Bath



	SQ FT	M ²
Interior	622	57.8
Balcony	0	0.0
Total	622	57.8



Brickell

REALTY GROUP

2071 NW 112th Avenue, Miami, FL 33172

www.brickell-realty.com/YotelPad.html

Oral representation cannot be relied upon as correctly stating representations of the developer. Pictures of homes and condos may not reflect the final products which may vary. Dimensions, specifications, improvements, rendering, plans, land uses, materials, amenities, prices, and availability are subject to change at the developer's discretion without notice.

Stated dimensions are approximate and measured to the exterior boundaries of the exterior walls and the centerline of interior demising walls which in fact vary from the dimensions that would be determined by using the description and definition of the "Unit" set forth in the Declaration (which generally only includes the interior airspace between the perimeter walls and excludes interior structural components).