



CANARIAS

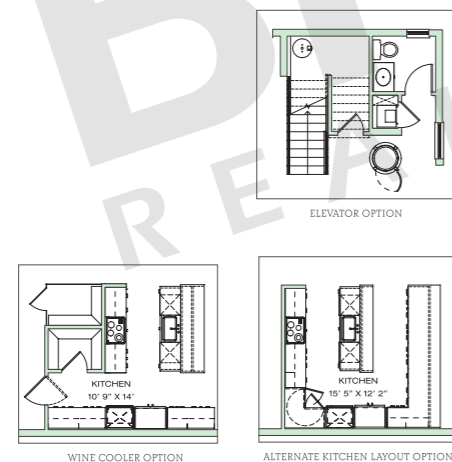
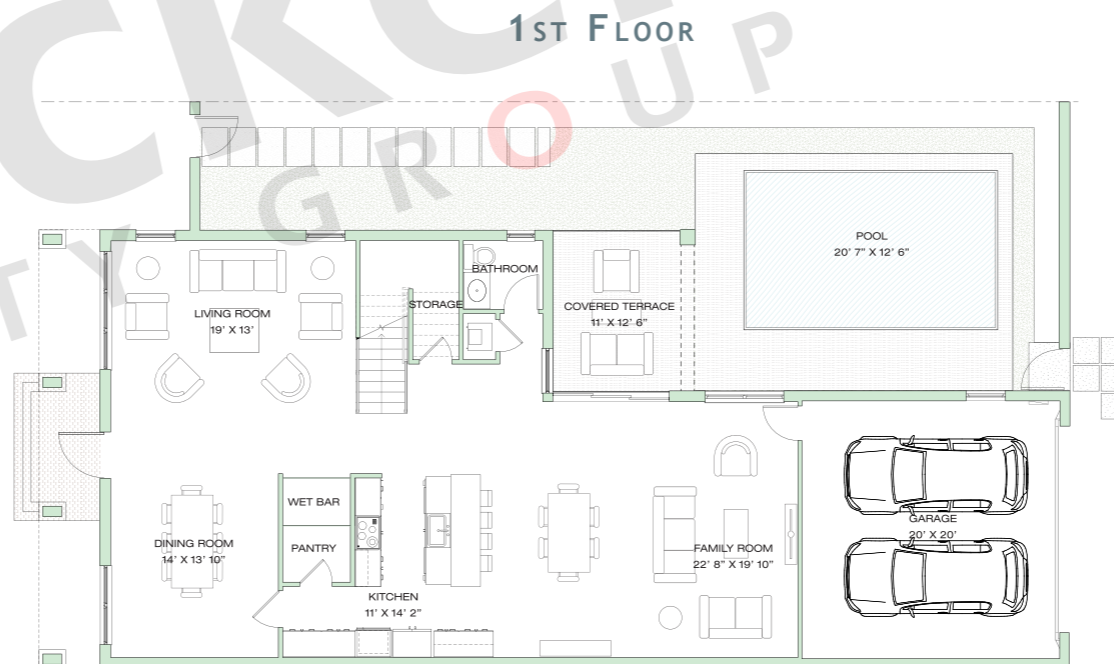
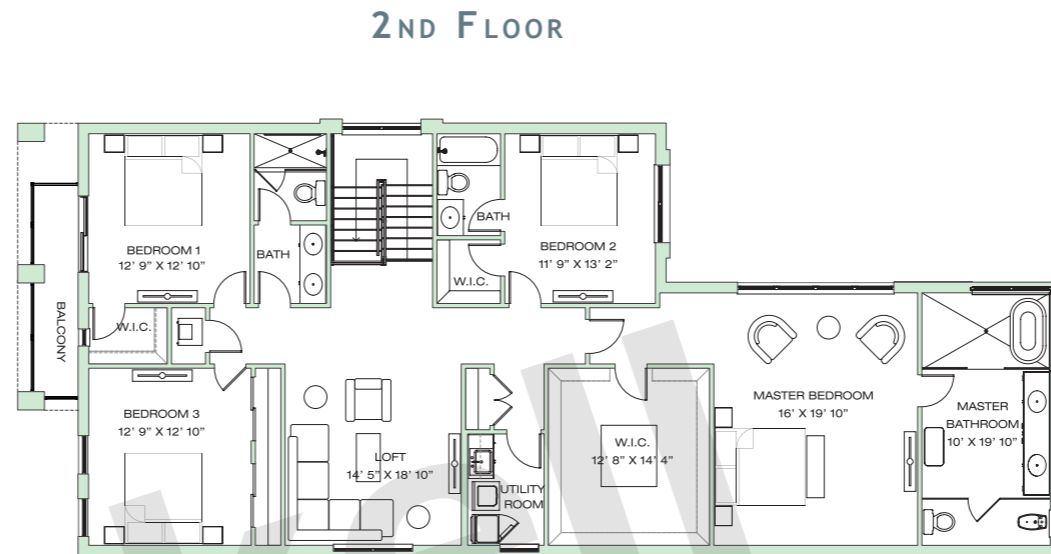
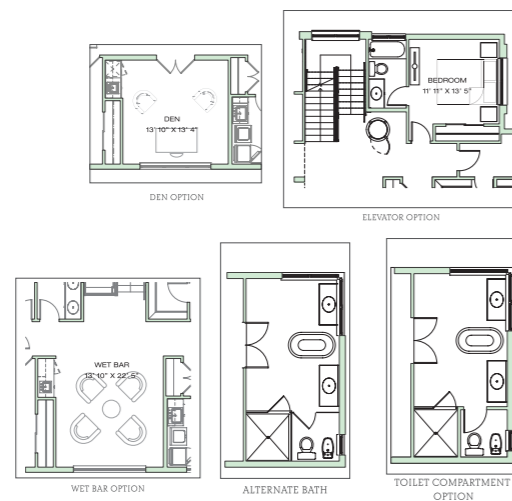
AT DOWNTOWN DORAL

BALI COLLECTION

SINGLE FAMILY HOMES

MODEL A • 2-STORY

4 BEDROOMS • 3.5 BATHS • 2-CAR GARAGE • DINING, LIVING & FAMILY ROOM • LOFT • BALCONY • UTILITY ROOM • POOL W/DECK & COVERED TERRACE



	SQ FT	M ²
Interior	3,815	354.4
Front Porch	70	6.5
Covered Terrace	137	12.7
Garage	441	41.0
Balcony	70	6.5
Total	4,533	421.1



COASTAL



CONTEMPORARY



SANTA BARBARA

Brickell REALTY GROUP

2071 NW 112th Avenue, Miami, FL 33172

www.brickell-realty.com/Canarias.html

Oral representation cannot be relied upon as correctly stating representations of the developer. Pictures of homes and condos may not reflect the final products which may vary. Dimensions, specifications, improvements, rendering, plans, land uses, materials, amenities, prices, and availability are subject to change at the developer's discretion without notice.

Stated dimensions are approximate and measured to the exterior boundaries of the exterior walls and the centerline of interior demising walls which in fact vary from the dimensions that would be determined by using the description and definition of the "Unit" set forth in the Declaration (which generally only includes the interior airspace between the perimeter walls and excludes interior structural components).



CANARIAS

AT DOWNTOWN DORAL

BALI COLLECTION

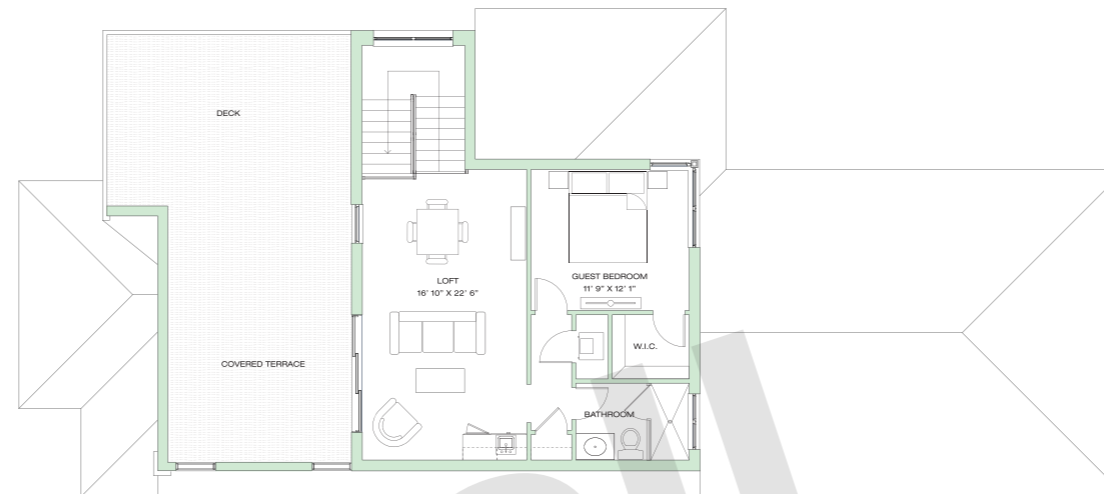
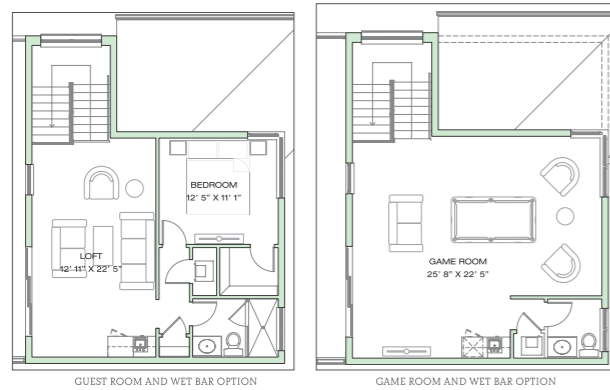
SINGLE FAMILY HOMES

MODEL A • 3-STORY

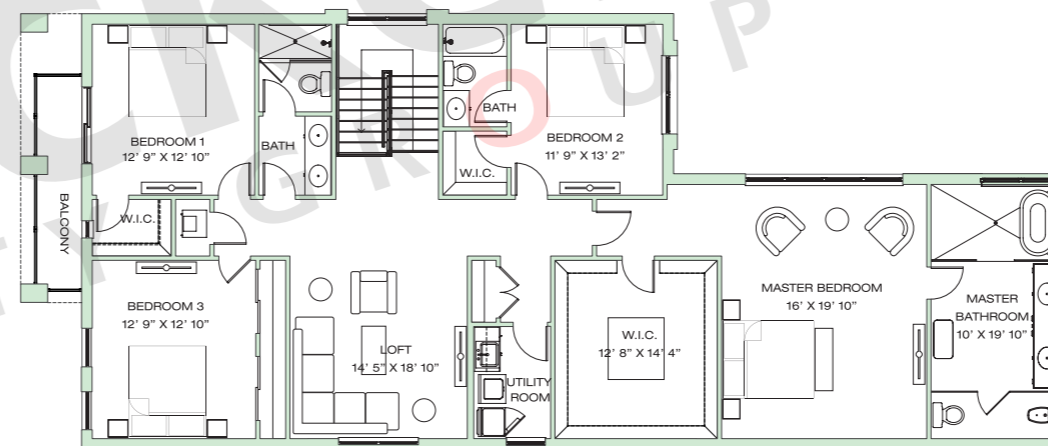
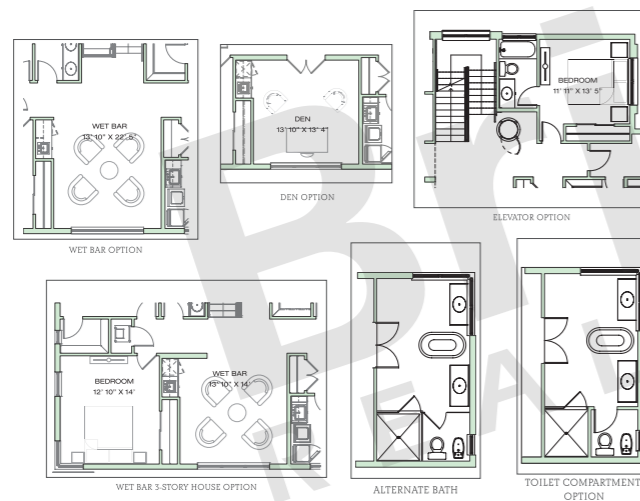
5 BEDROOMS • 4.5 BATHS • 2-CAR GARAGE • DINING, LIVING & FAMILY ROOM • LOFT • BALCONY • UTILITY ROOM • POOL w/DECK & COVERED TERRACE • ROOFTOP COVERED TERRACE, LOFT & GUEST ROOM

	SQ FT	M ²
Interior	4,645	431.5
Front Porch	70	6.5
Covered Terrace	137	12.5
Garage	441	41.0
Balcony	70	6.5
Deck	387	36.0
Rooftop Cov Terr	172	16.0
Total	5,922	550.0

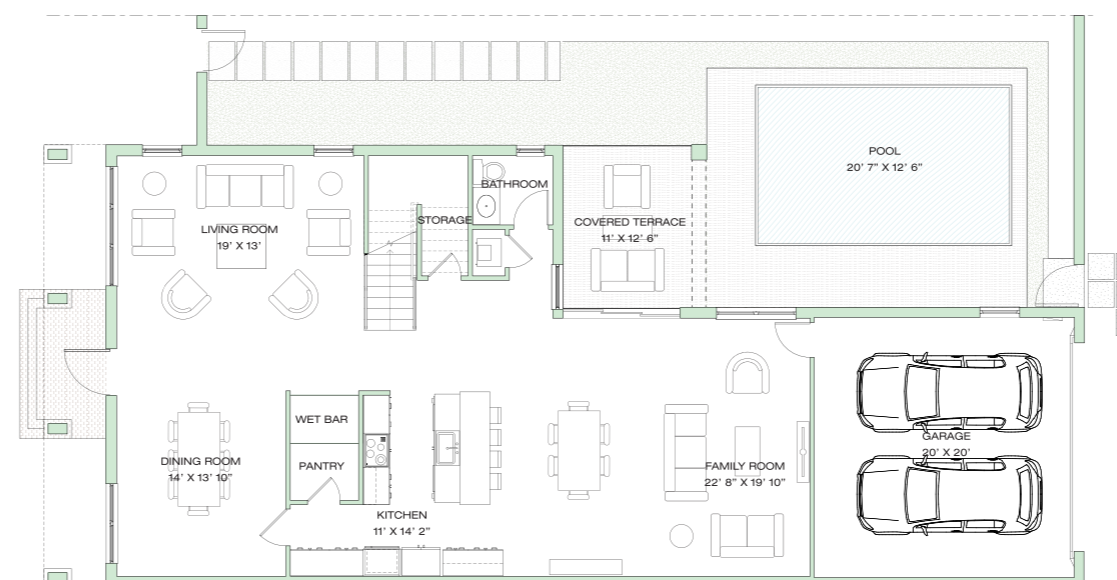
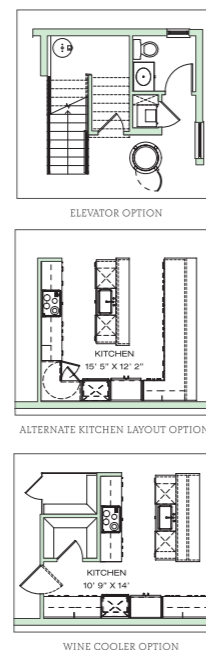
3RD FLOOR



2ND FLOOR



1ST FLOOR



CONTEMPORARY



COASTAL

Brickell REALTY GROUP

2071 NW 112th Avenue, Miami, FL 33172

www.brickell-realty.com/Canarias.html

Oral representation cannot be relied upon as correctly stating representations of the developer. Pictures of homes and condos may not reflect the final products which may vary. Dimensions, specifications, improvements, rendering, plans, land uses, materials, amenities, prices, and availability are subject to change at the developer's discretion without notice.

Stated dimensions are approximate and measured to the exterior boundaries of the exterior walls and the centerline of interior demising walls which in fact vary from the dimensions that would be determined by using the description and definition of the "Unit" set forth in the Declaration (which generally only includes the interior airspace between the perimeter walls and excludes interior structural components).



CANARIAS

AT DOWNTOWN DORAL

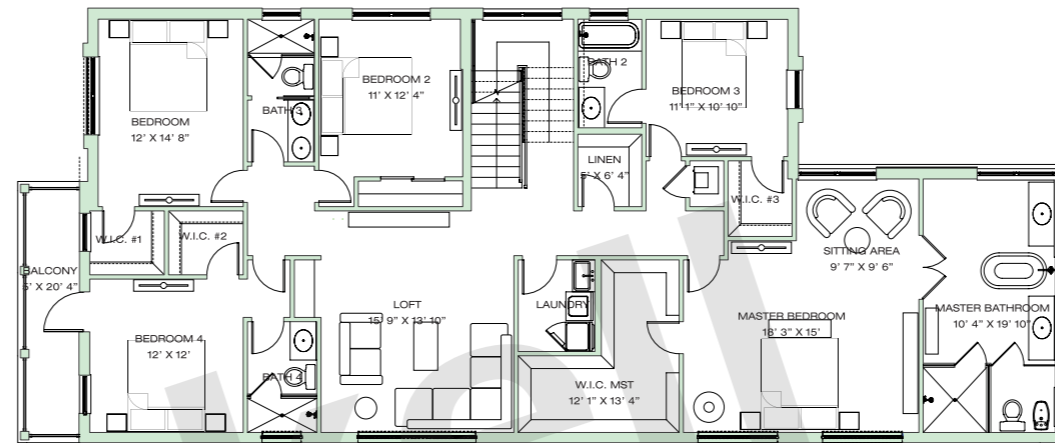
BALI COLLECTION

SINGLE FAMILY HOMES

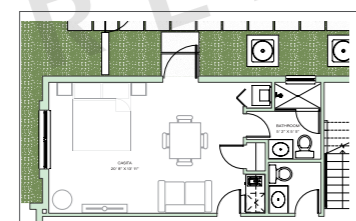
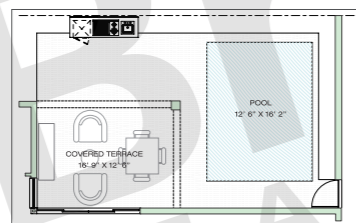
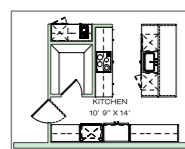
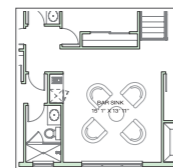
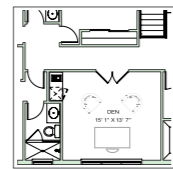
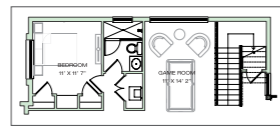
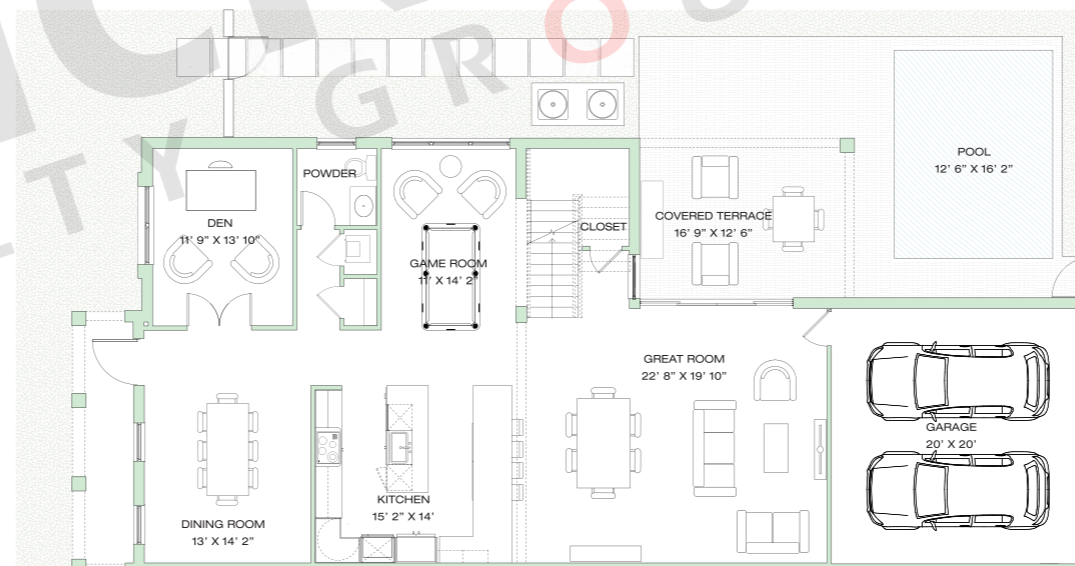
MODEL B • 2-STORY

5 BEDROOMS • 4.5 BATHS • 2-CAR GARAGE • GREAT ROOM • DINING ROOM • DEN • LOFT • BALCONY LAUNDRY ROOM • POOL W/DECK & COVERED TERRACE

2ND FLOOR



1ST FLOOR



	SQ FT	M ²
Interior	3,995	371.1
Front Porch	102	9.5
Covered Terrace	209	19.4
Garage	441	41.0
Front Balcony	102	9.5
Total	4,849	450.5



CONTEMPORARY



COASTAL



SANTA BARBARA

Brickell REALTY GROUP

2071 NW 112th Avenue, Miami, FL 33172

www.brickell-realty.com/Canarias.html

Oral representation cannot be relied upon as correctly stating representations of the developer. Pictures of homes and condos may not reflect the final products which may vary. Dimensions, specifications, improvements, rendering, plans, land uses, materials, amenities, prices, and availability are subject to change at the developer's discretion without notice.

Stated dimensions are approximate and measured to the exterior boundaries of the exterior walls and the centerline of interior demising walls which in fact vary from the dimensions that would be determined by using the description and definition of the "Unit" set forth in the Declaration (which generally only includes the interior airspace between the perimeter walls and excludes interior structural components).



CANARIAS

AT DOWNTOWN DORAL

BALI COLLECTION

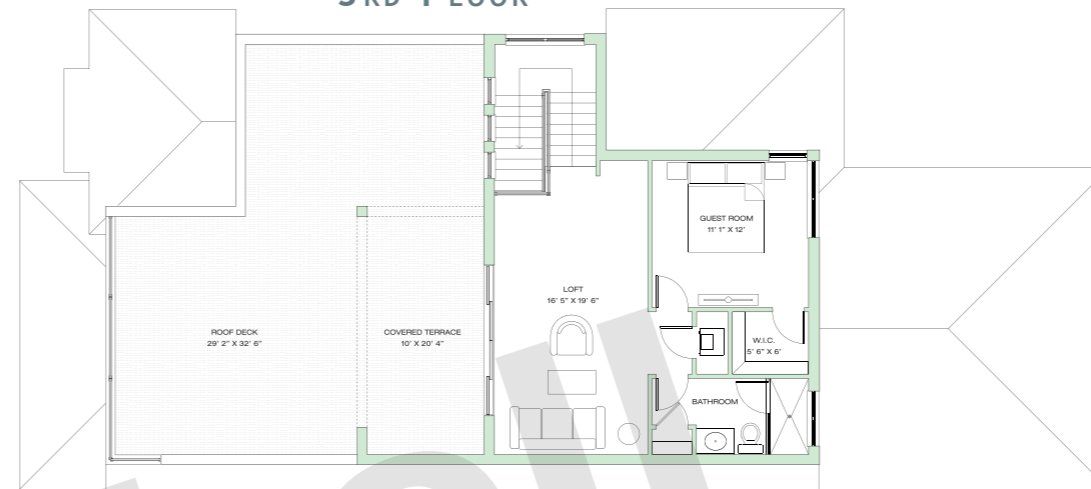
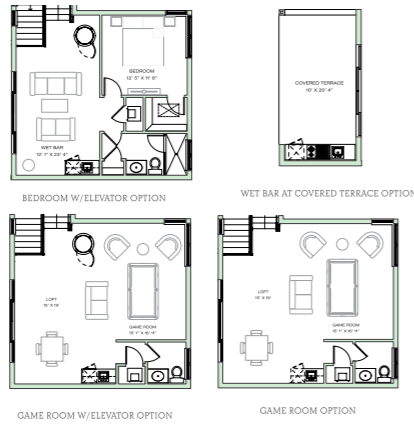
SINGLE FAMILY HOMES

MODEL B • 3-STORY

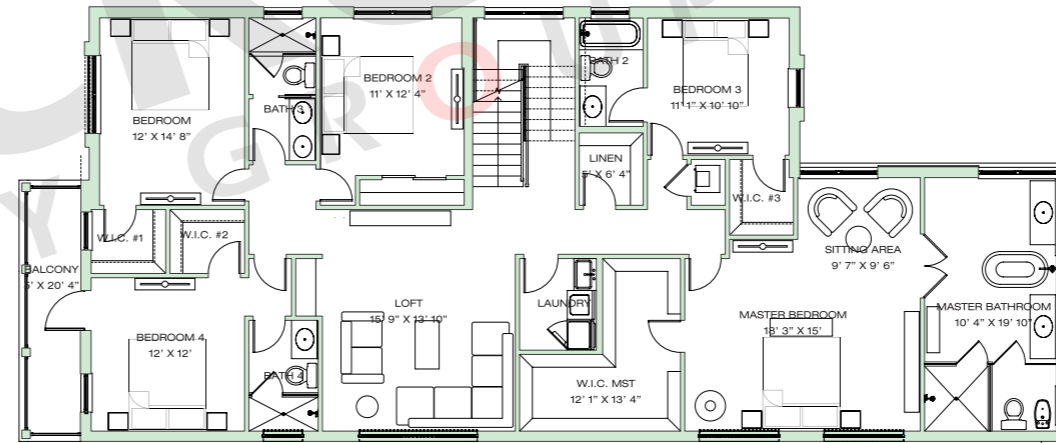
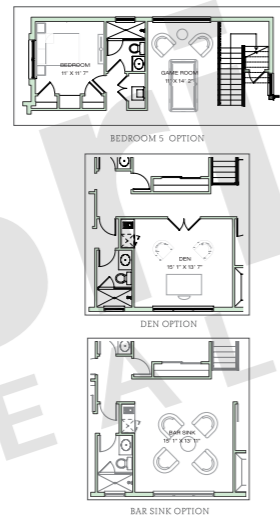
6 BEDROOMS • 5.5 BATHS • 2-CAR GARAGE • GREAT ROOM • DINING ROOM • DEN • LOFT • LAUNDRY ROOM • POOL W/DECK & COVERED TERRACE • ROOFTOP COVERED TERRACE, LOFT & GUEST ROOM • BALCONY

	SQ FT	M ²
Interior	4,766	442.8
Front Porch	102	9.5
Covered Terrace	209	19.4
Garage	441	41.0
Front Balcony	102	9.5
Deck	806	74.9
Rooftop Cov Terr	203	18.9
Total	6,629	616.0

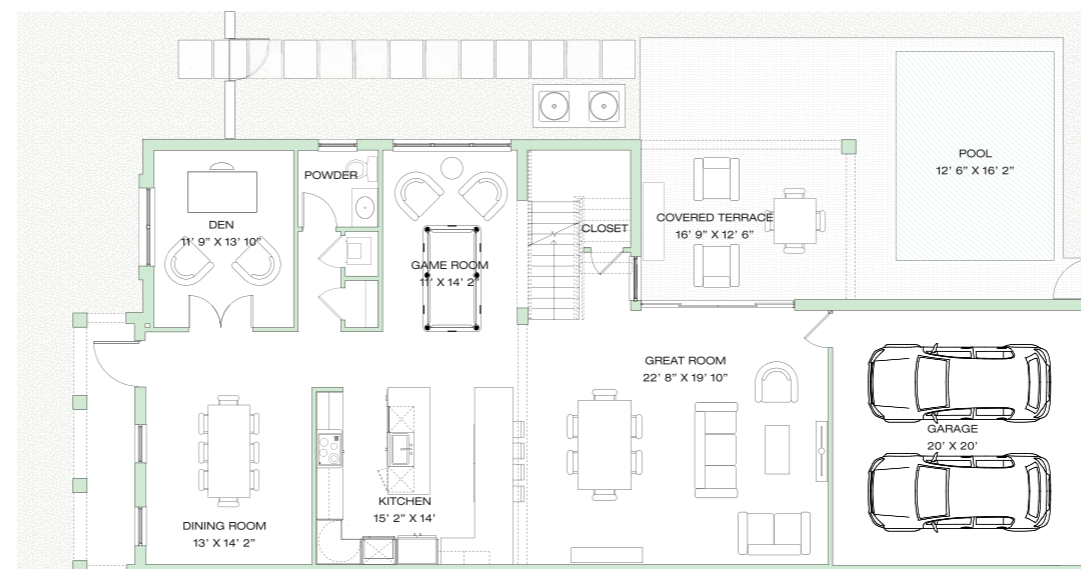
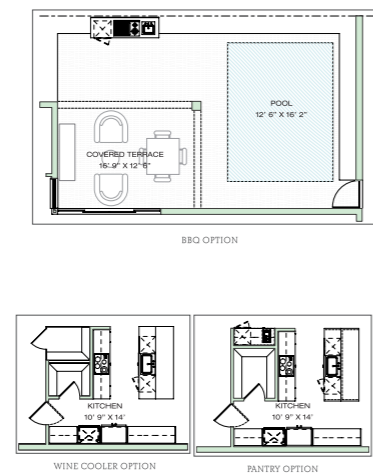
3RD FLOOR



2ND FLOOR



1ST FLOOR



CONTEMPORARY



COASTAL

Brickell REALTY GROUP

2071 NW 112th Avenue, Miami, FL 33172

www.brickell-realty.com/Canarias.html

Oral representation cannot be relied upon as correctly stating representations of the developer. Pictures of homes and condos may not reflect the final products which may vary. Dimensions, specifications, improvements, rendering, plans, land uses, materials, amenities, prices, and availability are subject to change at the developer's discretion without notice.

Stated dimensions are approximate and measured to the exterior boundaries of the exterior walls and the centerline of interior demising walls which in fact vary from the dimensions that would be determined by using the description and definition of the "Unit" set forth in the Declaration (which generally only includes the interior airspace between the perimeter walls and excludes interior structural components).



CANARIAS

AT DOWNTOWN DORAL

BALI COLLECTION

SINGLE FAMILY HOMES

MODEL C • 2-STORY

4 BEDROOMS • 3.5 BATHS • 2-CAR GARAGE • GREAT ROOM • DINING ROOM • DEN • LOFT • LAUNDRY ROOM • POOL W/DECK & COVERED TERRACE • ROOFTOP COVERED TERRACE, LOFT & GAME ROOM • BALCONY



SANTA BARBARA

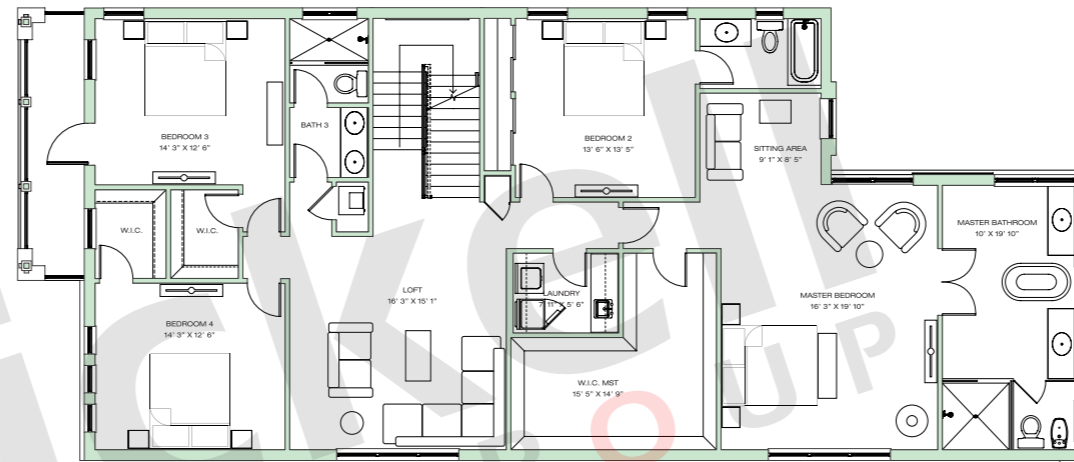


COASTAL

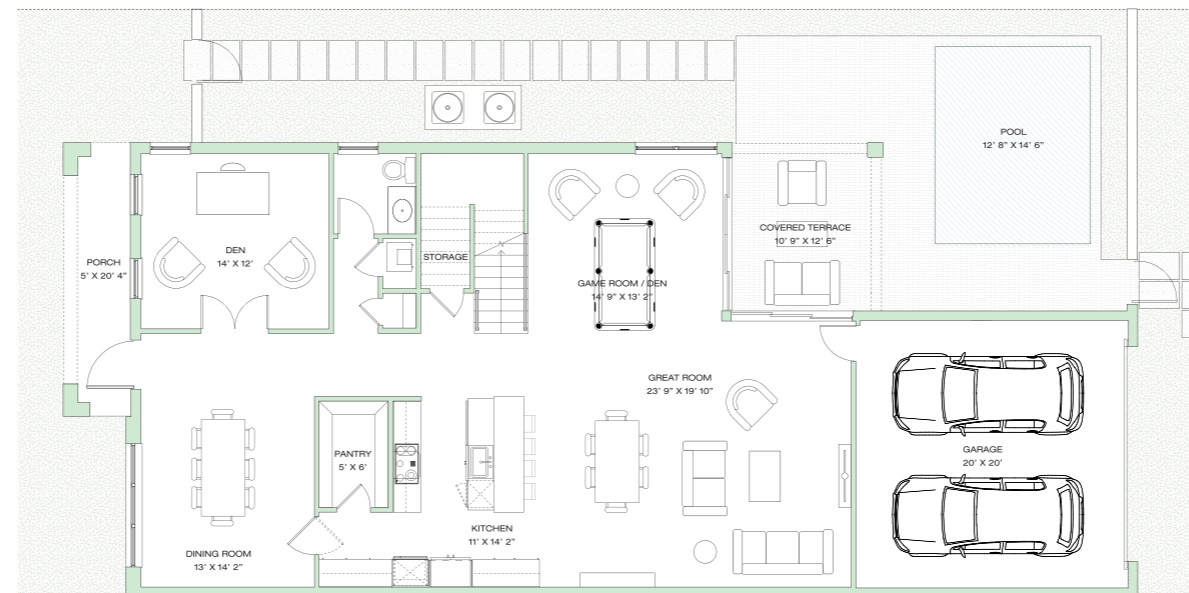


CONTEMPORARY

2ND FLOOR



1ST FLOOR



	SQ FT	M ²
Interior	4,022	373.6
Front Porch	102	9.5
Covered Terrace	135	12.5
Garage	441	41.0
Front Balcony	102	9.5
Total	4,802	446.1

Brickell REALTY GROUP

2071 NW 112th Avenue, Miami, FL 33172

www.brickell-realty.com/Canarias.html

Oral representation cannot be relied upon as correctly stating representations of the developer. Pictures of homes and condos may not reflect the final products which may vary. Dimensions, specifications, improvements, rendering, plans, land uses, materials, amenities, prices, and availability are subject to change at the developer's discretion without notice.

Stated dimensions are approximate and measured to the exterior boundaries of the exterior walls and the centerline of interior demising walls which in fact vary from the dimensions that would be determined by using the description and definition of the "Unit" set forth in the Declaration (which generally only includes the interior airspace between the perimeter walls and excludes interior structural components).



CANARIAS

AT DOWNTOWN DORAL

BALI COLLECTION

SINGLE FAMILY HOMES

MODEL C • 3-STORY

4 BEDROOMS • 3.5 BATHS • 2-CAR GARAGE • GREAT ROOM • DINING ROOM • DEN • LOFT • LAUNDRY ROOM • POOL W/DECK & COVERED TERRACE • ROOFTOP COVERED TERRACE, LOFT & GAME ROOM • BALCONY

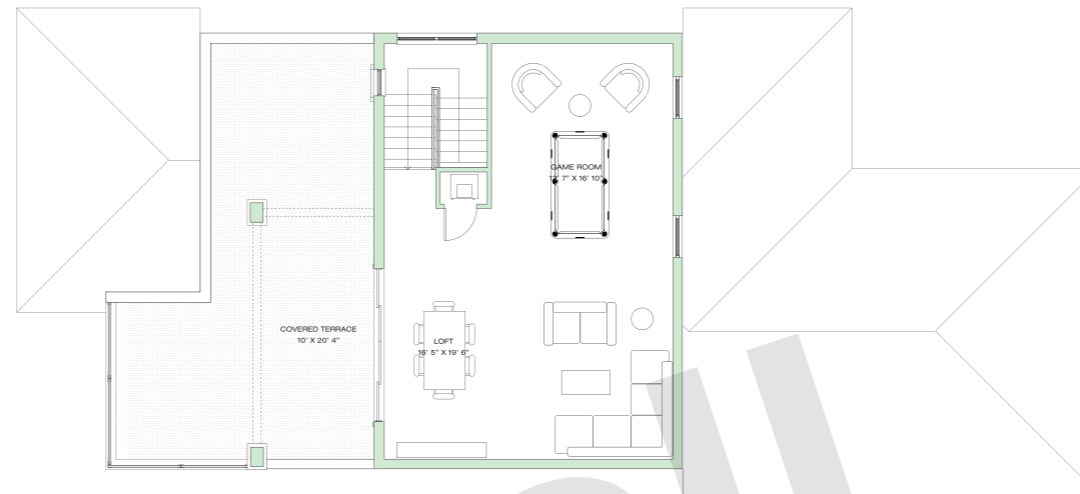


CONTEMPORARY

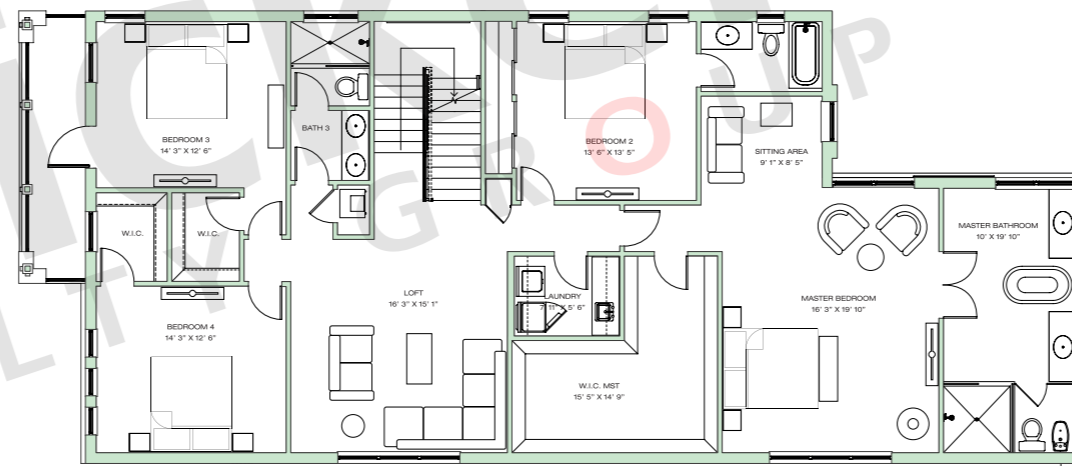


COASTAL

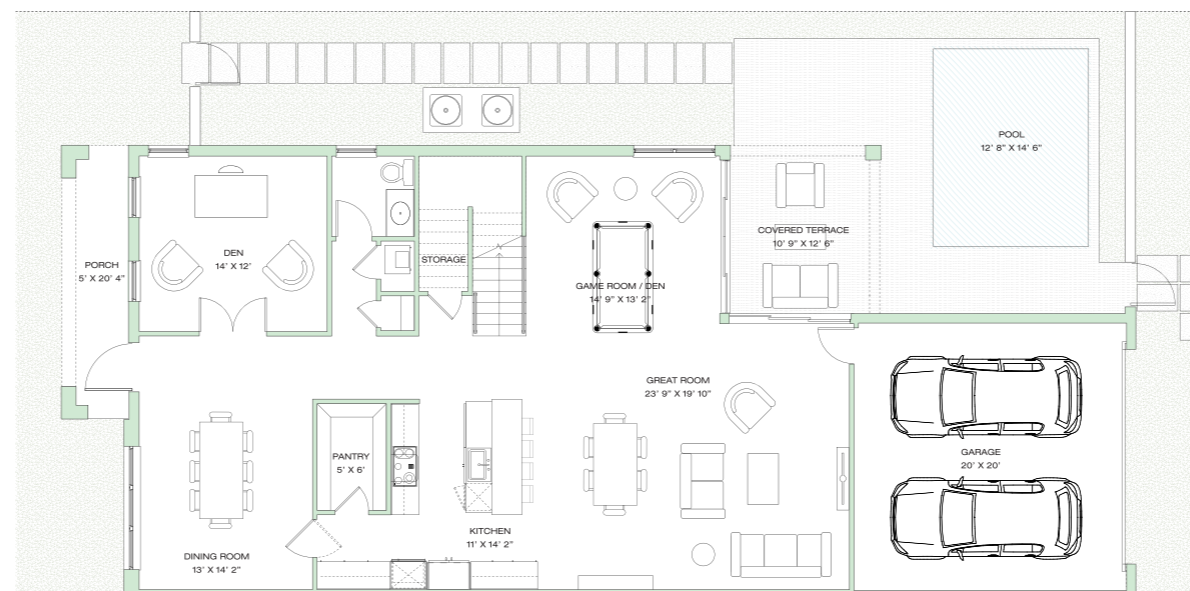
3RD FLOOR



2ND FLOOR



1ST FLOOR



SQ FT M²

Interior	4,780	444.1
Front Porch	102	9.5
Covered Terrace	135	12.5
Garage	441	41.0
Front Balcony	102	9.5
Deck	502	46.6
Rooftop Cov Terr	203	18.9
Total	6,265	582.1

Brickell
REALTY GROUP

2071 NW 112th Avenue, Miami, FL 33172

www.brickell-realty.com/Canarias.html

Oral representation cannot be relied upon as correctly stating representations of the developer. Pictures of homes and condos may not reflect the final products which may vary. Dimensions, specifications, improvements, rendering, plans, land uses, materials, amenities, prices, and availability are subject to change at the developer's discretion without notice.

Stated dimensions are approximate and measured to the exterior boundaries of the exterior walls and the centerline of interior demising walls which in fact vary from the dimensions that would be determined by using the description and definition of the "Unit" set forth in the Declaration (which generally only includes the interior airspace between the perimeter walls and excludes interior structural components).



CANARIAS

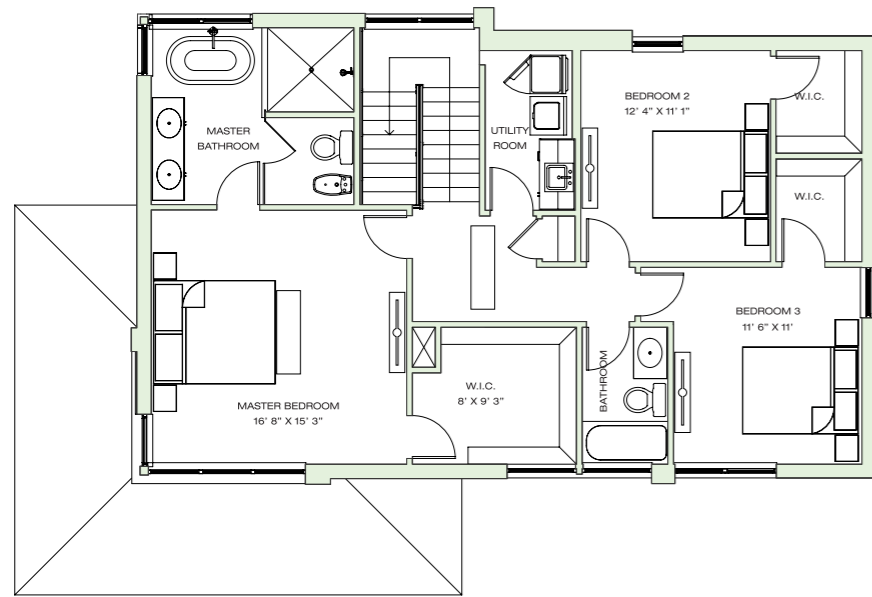
AT DOWNTOWN DORAL

FIJI COLLECTION

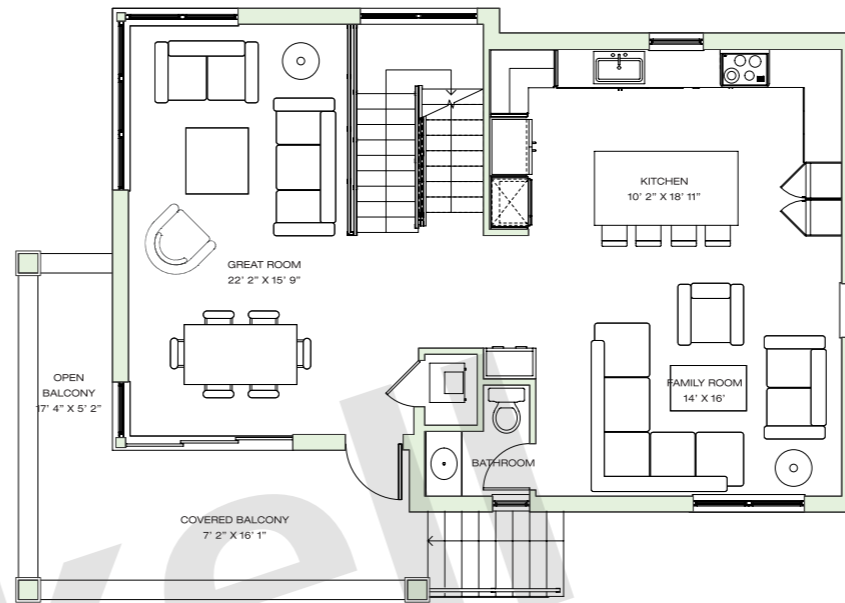
SINGLE FAMILY HOMES

MODEL A · 3-STORY

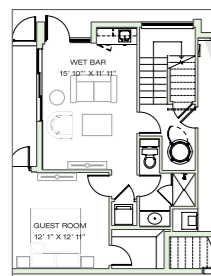
4 BEDROOMS · 3.5 BATHS · 2-CAR GARAGE · GREAT ROOM · FAMILY ROOM · UTILITY ROOM · COURTYARD ELEVATOR & GAME ROOM OPTIONS



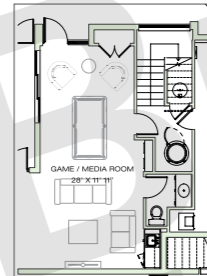
TOP FLOOR



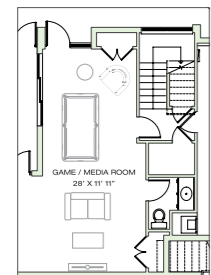
MAIN FLOOR



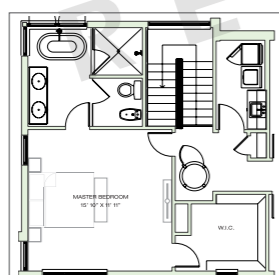
GUEST ROOM & WET BAR W/ELEVATOR OPTION



GAME/MEDIA ROOM W/ELEVATOR OPTION

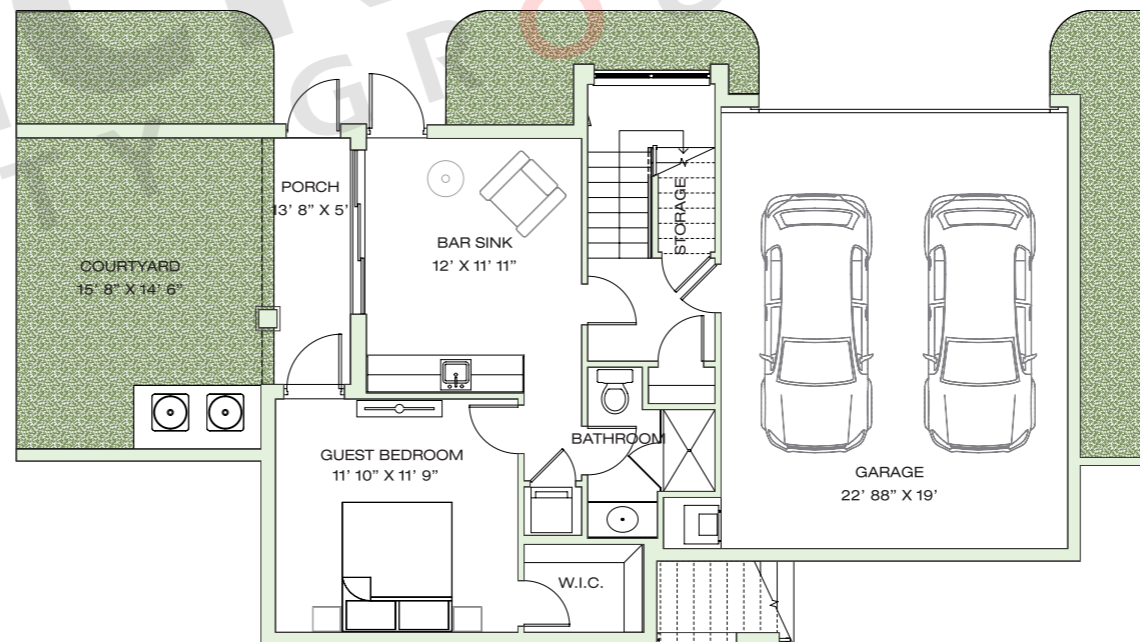


GAME ROOM OPTION



ELEVATOR OPTION

OPTIONS



GROUND FLOOR

	SQ FT	M ²
Interior	2,827	262.6
Open Balcony	90	8.4
Covered Balcony	122	11.3
Covered Porch	72	6.7
Garage	472	43.8
Courtyard	155	14.4
Total	3,738	347.2



SANTA BARBARA



COASTAL

Brickell REALTY GROUP

2071 NW 112th Avenue, Miami, FL 33172

www.brickell-realty.com/Canarias.html

Oral representation cannot be relied upon as correctly stating representations of the developer. Pictures of homes and condos may not reflect the final products which may vary. Dimensions, specifications, improvements, rendering, plans, land uses, materials, amenities, prices, and availability are subject to change at the developer's discretion without notice.

Stated dimensions are approximate and measured to the exterior boundaries of the exterior walls and the centerline of interior demising walls which in fact vary from the dimensions that would be determined by using the description and definition of the "Unit" set forth in the Declaration (which generally only includes the interior airspace between the perimeter walls and excludes interior structural components).



CANARIAS

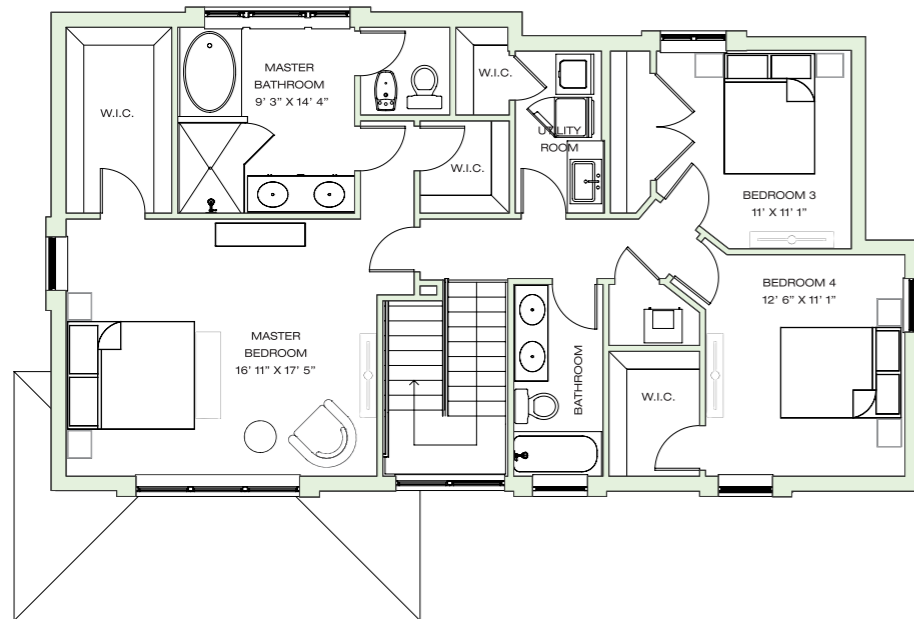
AT DOWNTOWN DORAL

FIJI COLLECTION

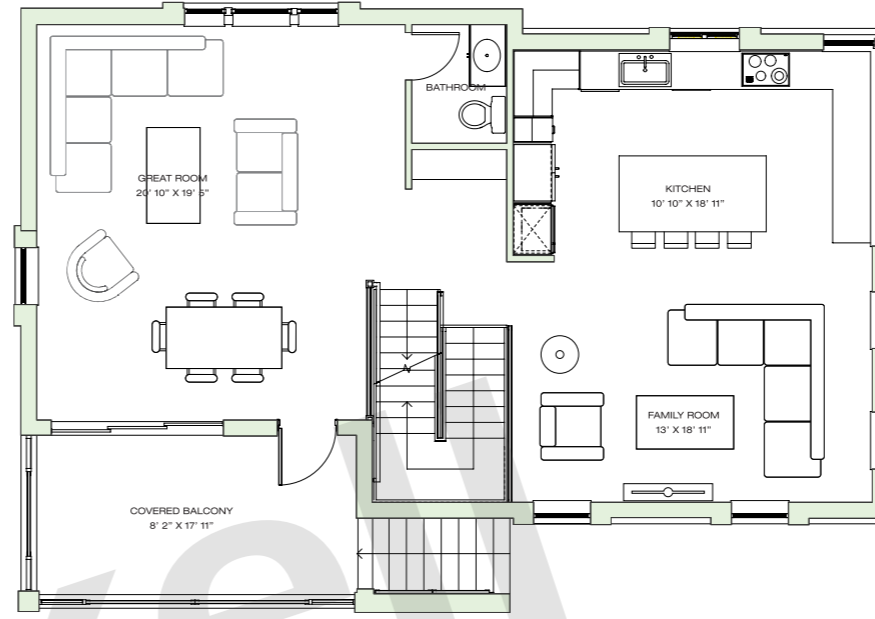
SINGLE FAMILY HOMES

MODEL B · 3-STORY

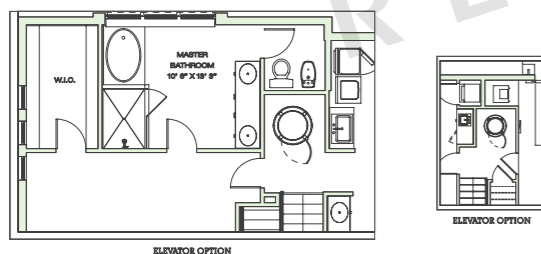
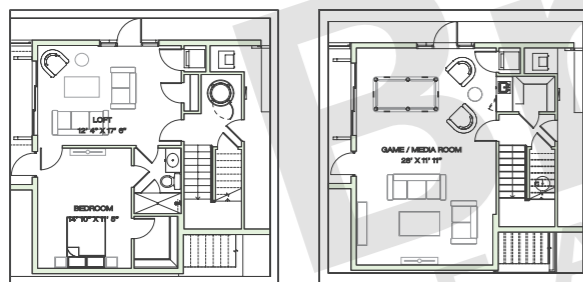
5 BEDROOMS · 3.5 BATHS · 2-CAR GARAGE · UTILITY ROOM · GREAT ROOM · FAMILY ROOM · SITTING AREA COURTYARD · ELEVATOR & GAME ROOM OPTION



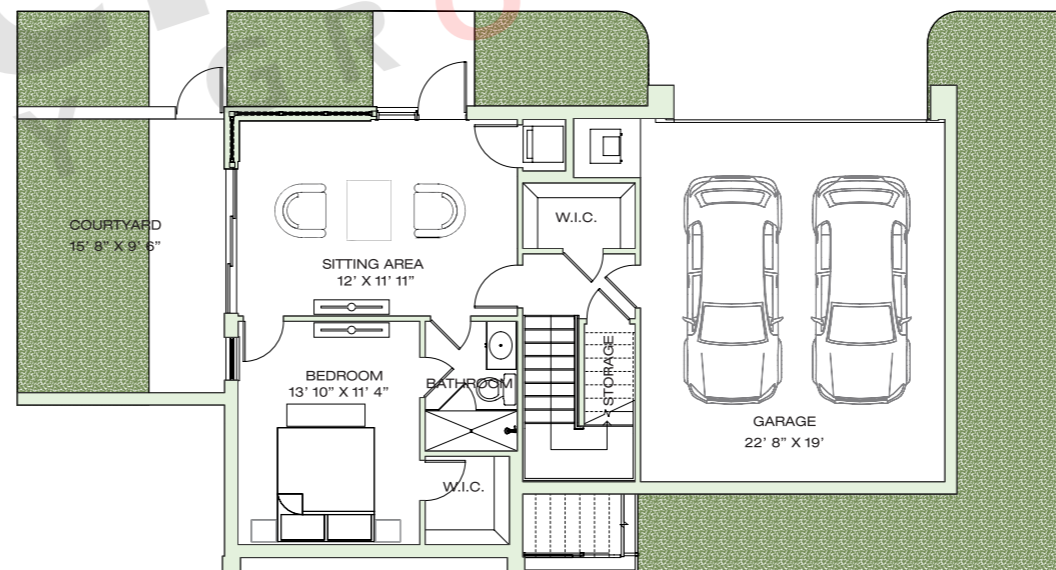
TOP FLOOR



MAIN FLOOR



OPTIONS



GROUND FLOOR

	SQ FT	M ²
Interior	3,132	291.0
Balcony	146	13.6
Covered Porch	85	7.9
Garage	472	43.8
Courtyard	162	15.0
Total	3,997	371.3



CONTEMPORARY - CORNER

Brickell REALTY GROUP

2071 NW 112th Avenue, Miami, FL 33172

www.brickell-realty.com/Canarias.html

Oral representation cannot be relied upon as correctly stating representations of the developer. Pictures of homes and condos may not reflect the final products which may vary. Dimensions, specifications, improvements, rendering, plans, land uses, materials, amenities, prices, and availability are subject to change at the developer's discretion without notice.

Stated dimensions are approximate and measured to the exterior boundaries of the exterior walls and the centerline of interior demising walls which in fact vary from the dimensions that would be determined by using the description and definition of the "Unit" set forth in the Declaration (which generally only includes the interior airspace between the perimeter walls and excludes interior structural components).



SANTA BARBARA



CONTEMPORARY



COASTAL



CANARIAS

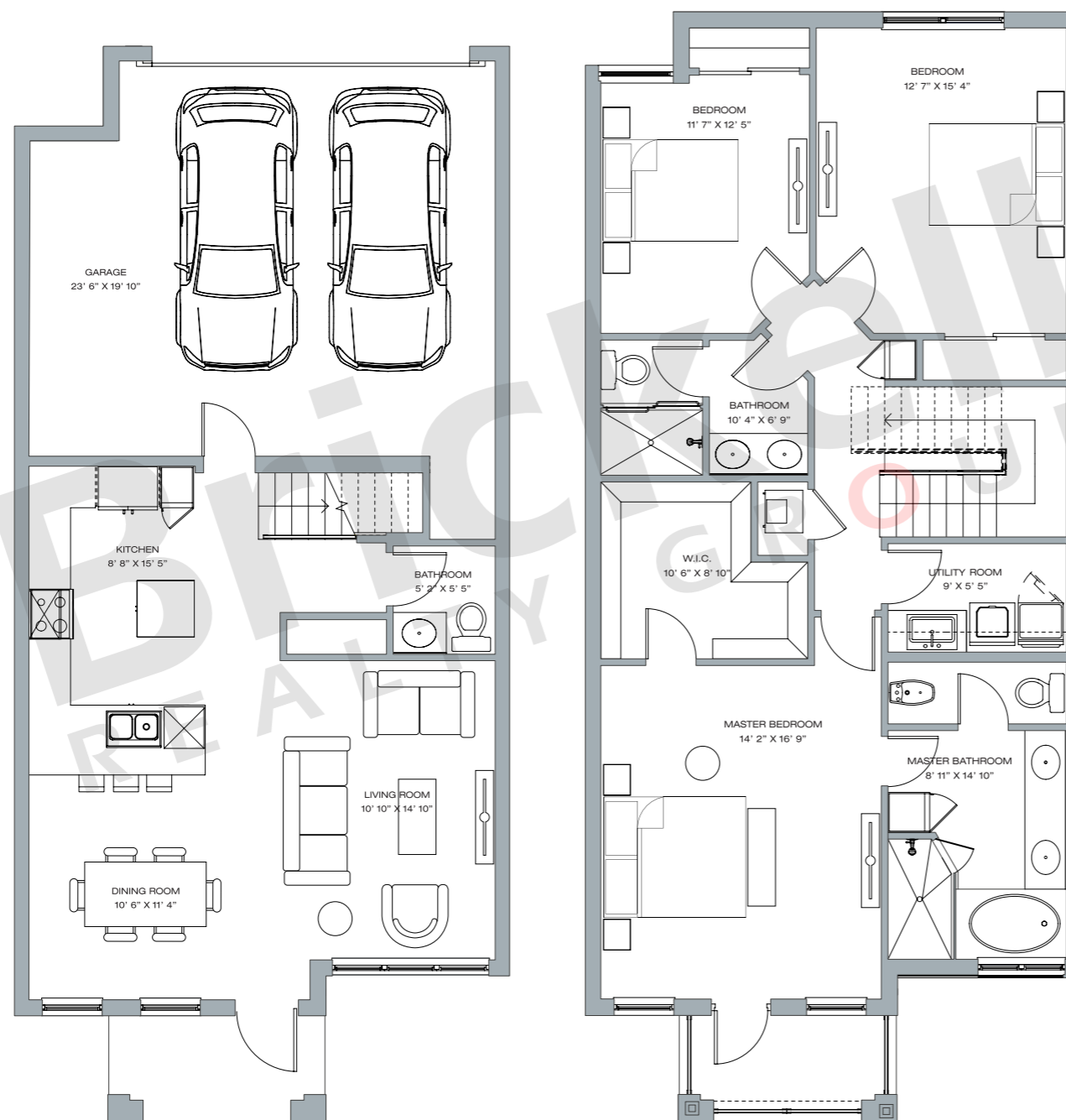
AT DOWNTOWN DORAL

TAHITI COLLECTION TOWNHOMES

MODEL A · 2-STORY

3 BEDROOMS · 2.5 BATHS · 2-CAR
GARAGE · UTILITY ROOM

	SQ FT	M ²
Interior	1,823	169.4
Balcony	58	5.4
Covered Porch	58	5.4
Garage	493	45.8
Total	2,432	226.0



1ST FLOOR

2ND FLOOR

Brickell REALTY GROUP

2071 NW 112th Avenue, Miami, FL 33172

www.brickell-realty.com/Canarias.html

Oral representation cannot be relied upon as correctly stating representations of the developer. Pictures of homes and condos may not reflect the final products which may vary. Dimensions, specifications, improvements, rendering, plans, land uses, materials, amenities, prices, and availability are subject to change at the developer's discretion without notice.

Stated dimensions are approximate and measured to the exterior boundaries of the exterior walls and the centerline of interior demising walls which in fact vary from the dimensions that would be determined by using the description and definition of the "Unit" set forth in the Declaration (which generally only includes the interior airspace between the perimeter walls and excludes interior structural components).



CANARIAS

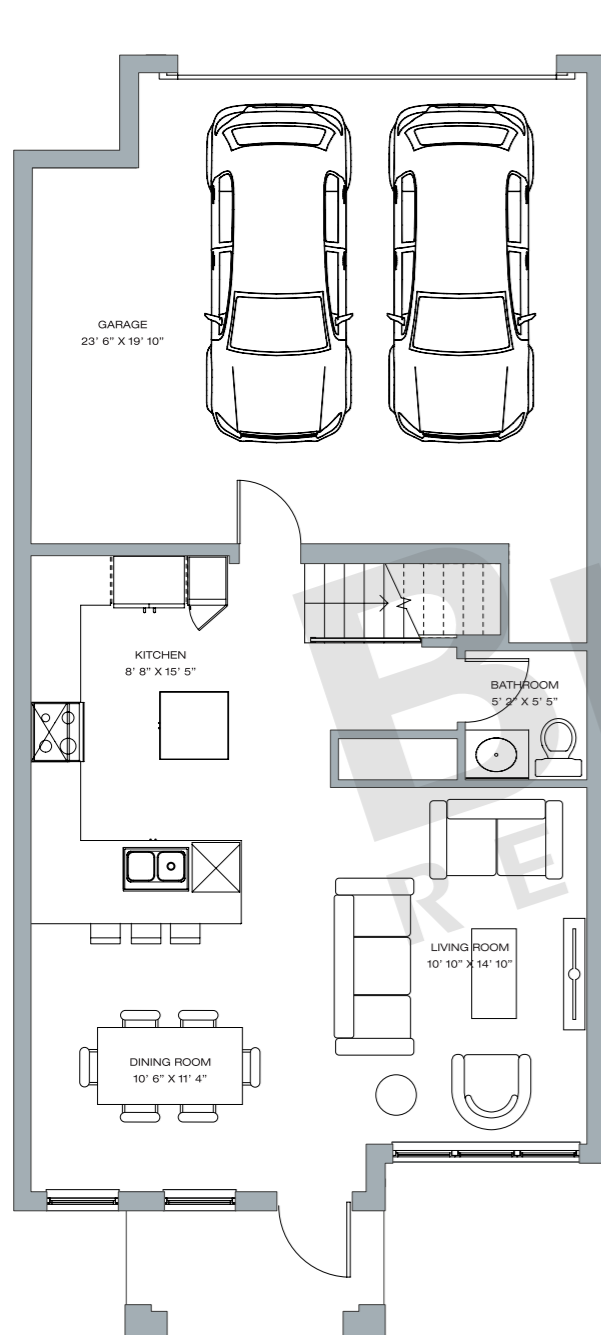
AT DOWNTOWN DORAL

TAHITI COLLECTION TOWNHOMES

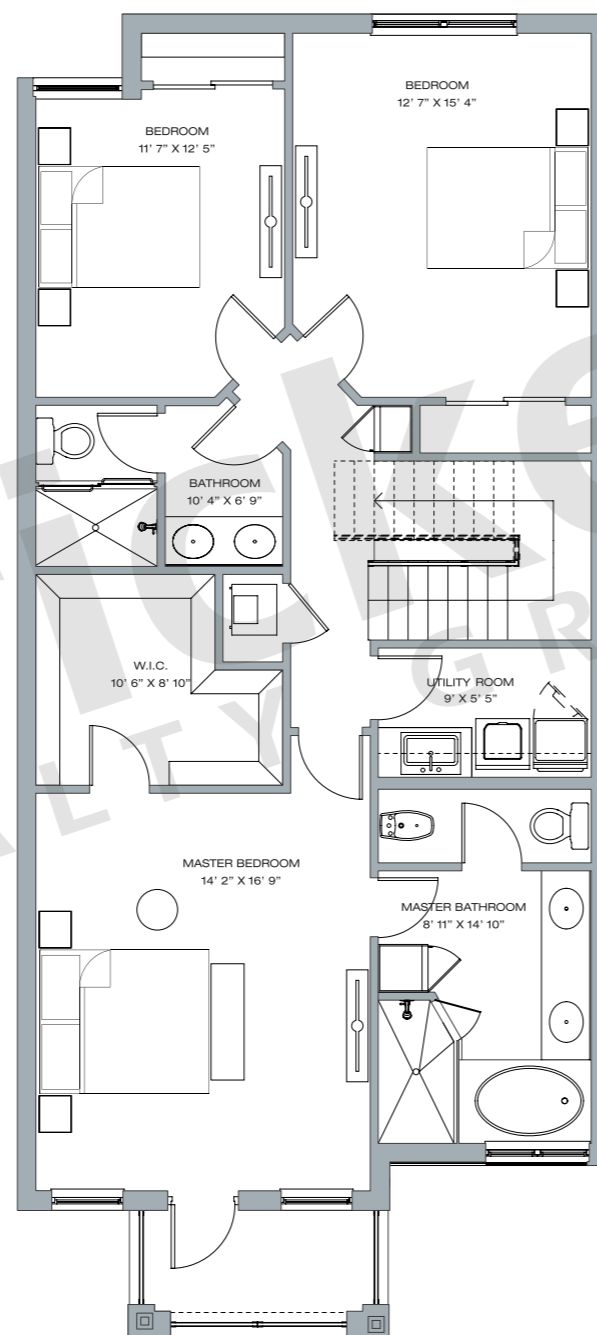
MODEL A · 3-STORY

4 BEDROOMS · 3.5 BATHS · 2-CAR GARAGE · UTILITY ROOM · ROOF COVERED TERRACE W/DEN, DECK AND WET BAR

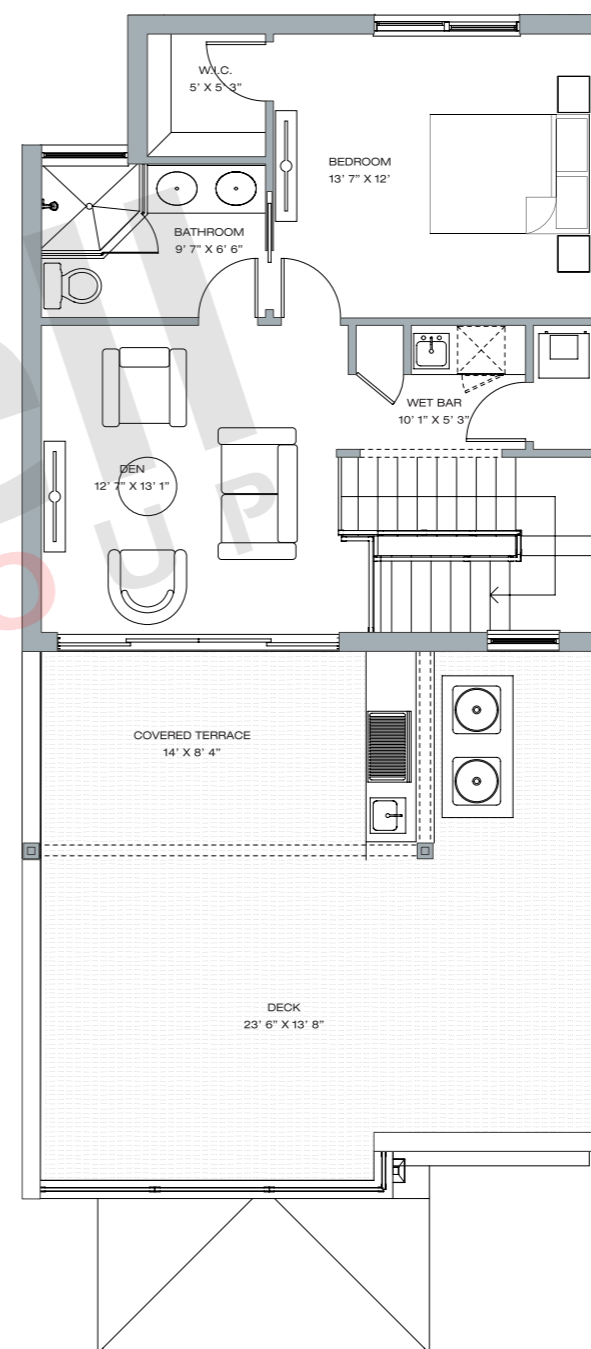
	SQ FT	M ²
Interior	2,456	228.2
Balcony	58	5.4
Covered Porch	58	5.4
Garage	493	45.8
Covered Terrace	151	14.0
Deck	391	36.3
Total	3,607	335.1



1ST FLOOR



2ND FLOOR



3RD FLOOR / TERRACE

Brickell REALTY GROUP

2071 NW 112th Avenue, Miami, FL 33172

www.brickell-realty.com/Canarias.html

Oral representation cannot be relied upon as correctly stating representations of the developer. Pictures of homes and condos may not reflect the final products which may vary. Dimensions, specifications, improvements, rendering, plans, land uses, materials, amenities, prices, and availability are subject to change at the developer's discretion without notice.

Stated dimensions are approximate and measured to the exterior boundaries of the exterior walls and the centerline of interior demising walls which in fact vary from the dimensions that would be determined by using the description and definition of the "Unit" set forth in the Declaration (which generally only includes the interior airspace between the perimeter walls and excludes interior structural components).



CANARIAS

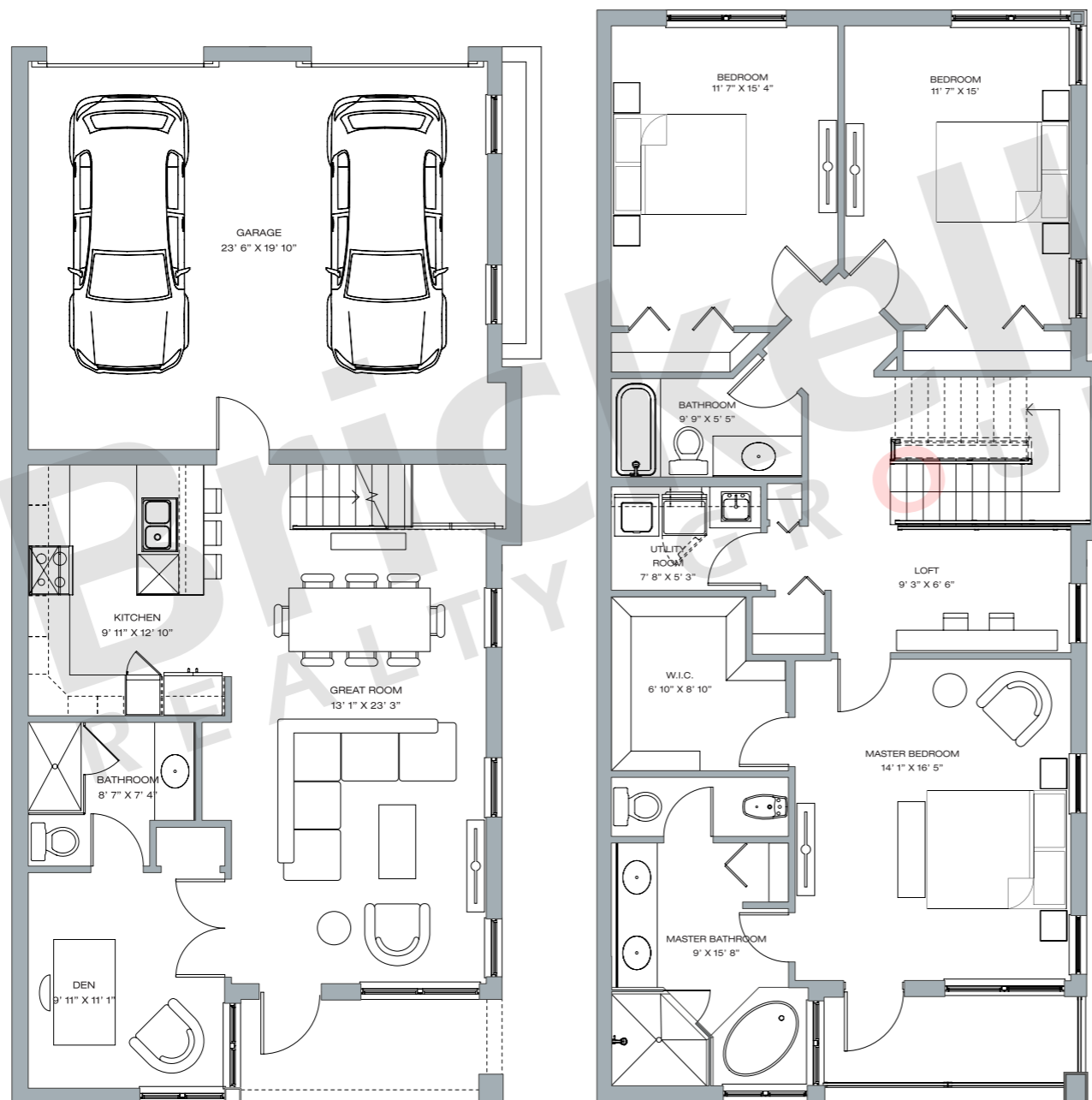
AT DOWNTOWN DORAL

TAHITI COLLECTION TOWNHOMES

MODEL B · 2-STORY

3 BEDROOMS · 3 BATHS · 2-CAR
GARAGE · GREAT ROOM · DEN · LOFT
UTILITY ROOM

	SQ FT	M ²
Interior	2,006	186.4
Balcony	70	6.5
Covered Porch	71	6.6
Garage	540	50.2
Total	2,687	249.7



1ST FLOOR

2ND FLOOR

Brickell REALTY GROUP

2071 NW 112th Avenue, Miami, FL 33172

www.brickell-realty.com/Canarias.html

Oral representation cannot be relied upon as correctly stating representations of the developer. Pictures of homes and condos may not reflect the final products which may vary. Dimensions, specifications, improvements, rendering, plans, land uses, materials, amenities, prices, and availability are subject to change at the developer's discretion without notice.

Stated dimensions are approximate and measured to the exterior boundaries of the exterior walls and the centerline of interior demising walls which in fact vary from the dimensions that would be determined by using the description and definition of the "Unit" set forth in the Declaration (which generally only includes the interior airspace between the perimeter walls and excludes interior structural components).



CANARIAS

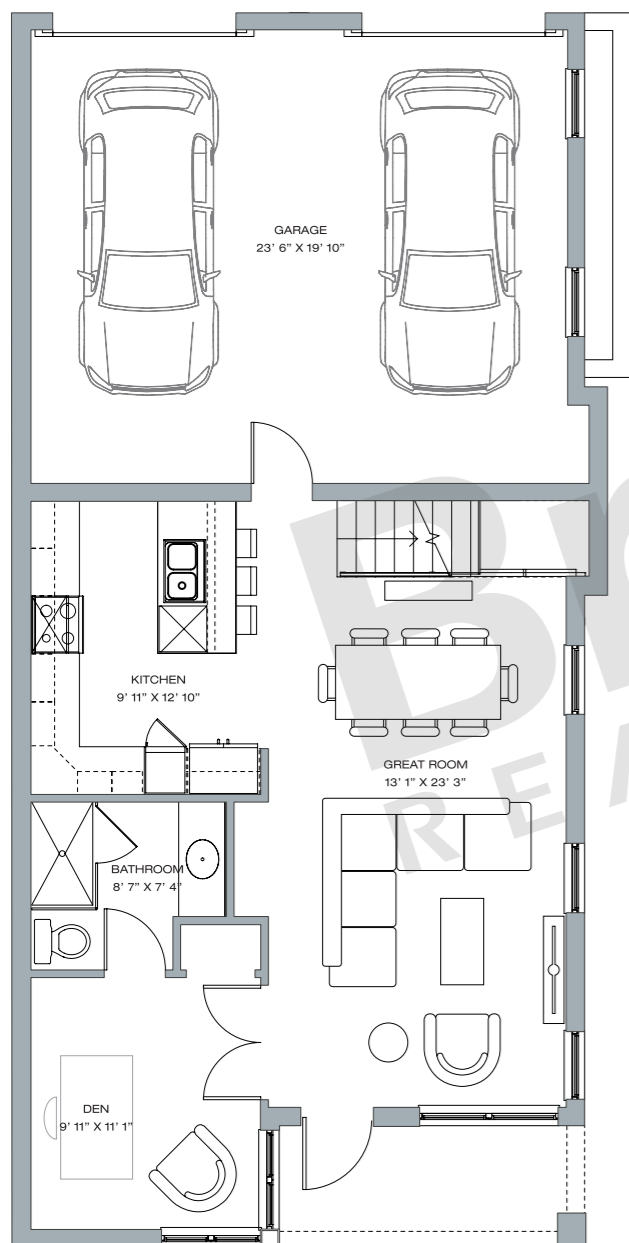
AT DOWNTOWN DORAL

TAHITI COLLECTION TOWNHOMES

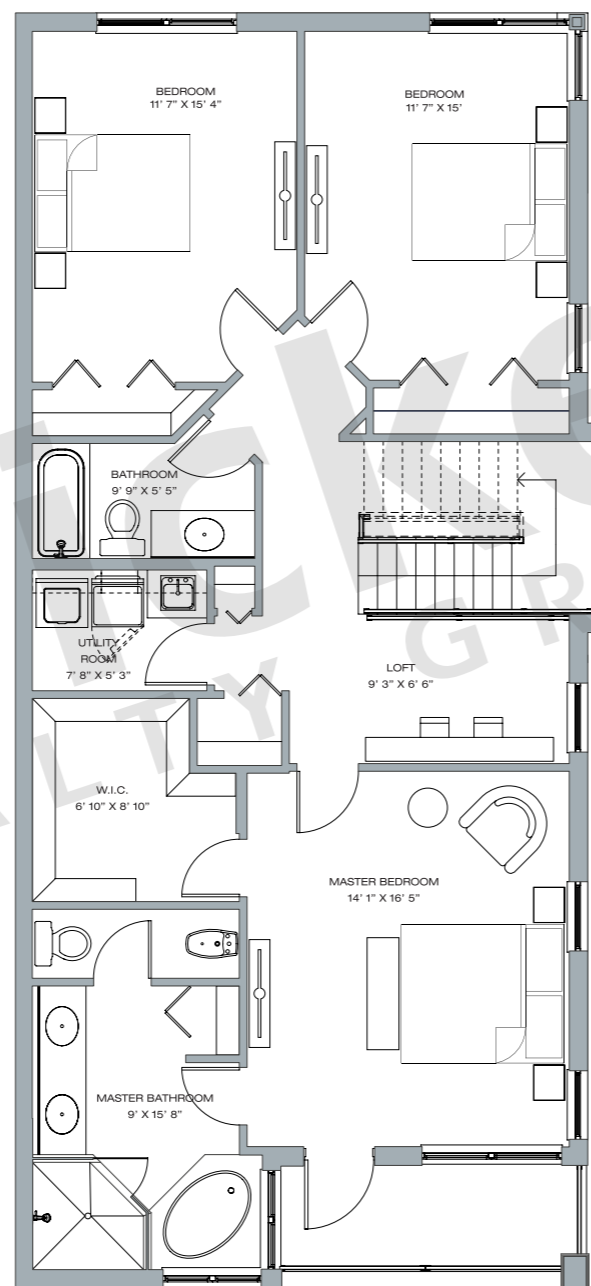
MODEL B · 3-STORY

4 BEDROOMS · 4 BATHS · 2-CAR GARAGE · UTILITY ROOM · 2 x DEN
ROOF COVERED TERRACE W/DEN, DECK AND WET BAR

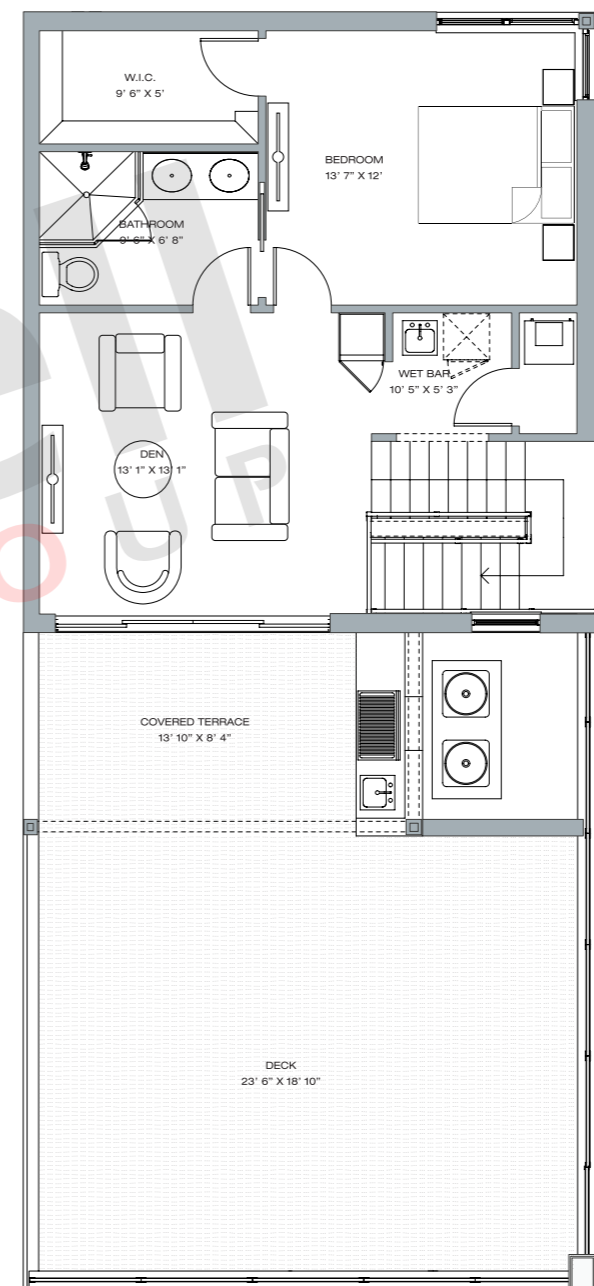
	SQ FT	M ²
Interior	2,663	247.4
Balcony	70	6.5
Covered Porch	71	6.6
Garage	540	50.2
Covered Terrace	152	14.1
Deck	556	51.7
Total	4,052	376.5



1ST FLOOR



2ND FLOOR



3RD FLOOR / TERRACE

Brickell
REALTY GROUP

2071 NW 112th Avenue, Miami, FL 33172

www.brickell-realty.com/Canarias.html

Oral representation cannot be relied upon as correctly stating representations of the developer. Pictures of homes and condos may not reflect the final products which may vary. Dimensions, specifications, improvements, rendering, plans, land uses, materials, amenities, prices, and availability are subject to change at the developer's discretion without notice.

Stated dimensions are approximate and measured to the exterior boundaries of the exterior walls and the centerline of interior demising walls which in fact vary from the dimensions that would be determined by using the description and definition of the "Unit" set forth in the Declaration (which generally only includes the interior airspace between the perimeter walls and excludes interior structural components).



CANARIAS

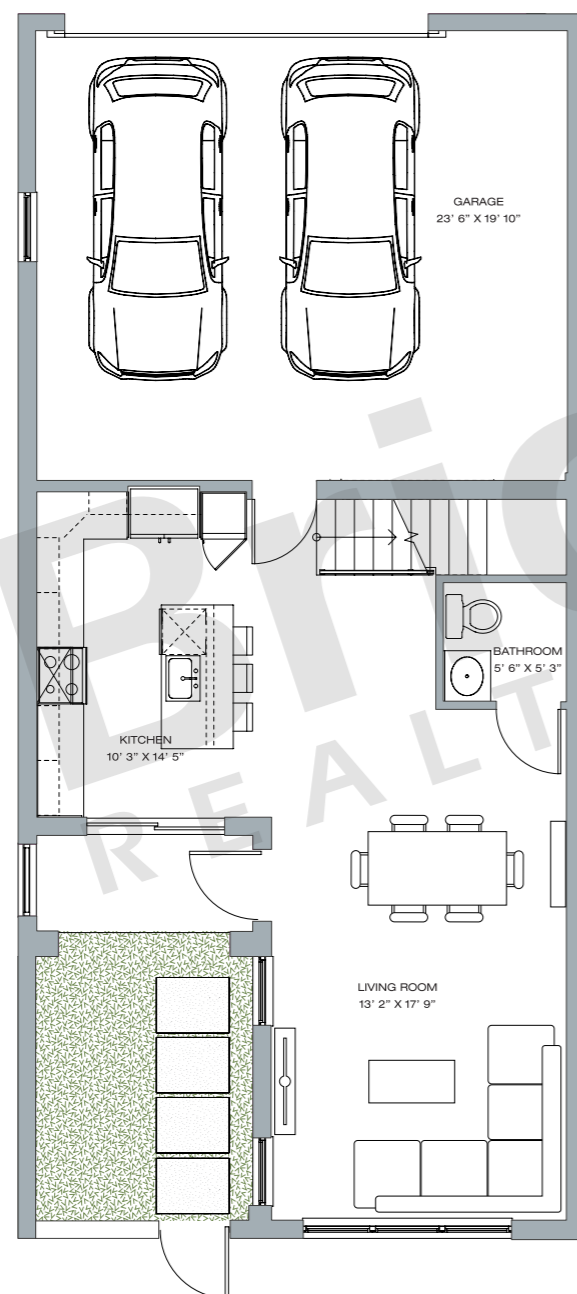
AT DOWNTOWN DORAL

TAHITI COLLECTION TOWNHOMES

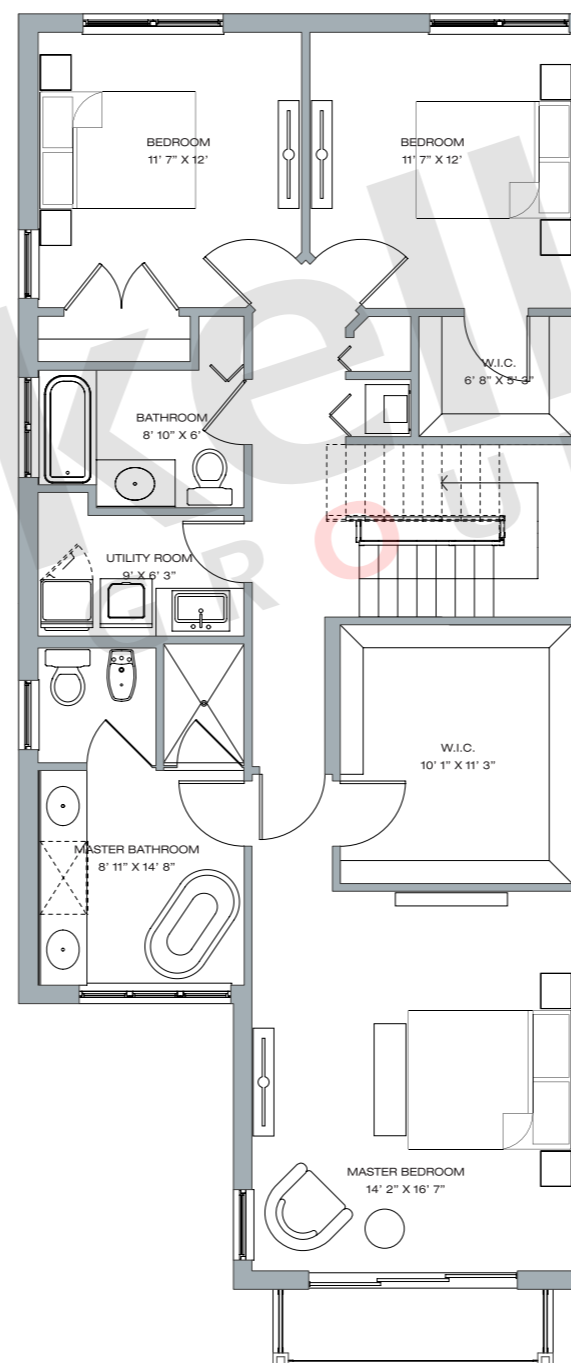
MODEL C · 2-STORY

3 BEDROOMS · 2.5 BATHS · 2-CAR
GARAGE · LIVING ROOM · UTILITY
ROOM

	SQ FT	M ²
Interior	1,815	168.6
Balcony	54	5.0
Covered Porch	53	4.9
Garage	540	50.2
Total	2,462	228.7



1ST FLOOR



2ND FLOOR

Brickell REALTY GROUP

2071 NW 112th Avenue, Miami, FL 33172

www.brickell-realty.com/Canarias.html

Oral representation cannot be relied upon as correctly stating representations of the developer. Pictures of homes and condos may not reflect the final products which may vary. Dimensions, specifications, improvements, rendering, plans, land uses, materials, amenities, prices, and availability are subject to change at the developer's discretion without notice.

Stated dimensions are approximate and measured to the exterior boundaries of the exterior walls and the centerline of interior demising walls which in fact vary from the dimensions that would be determined by using the description and definition of the "Unit" set forth in the Declaration (which generally only includes the interior airspace between the perimeter walls and excludes interior structural components).



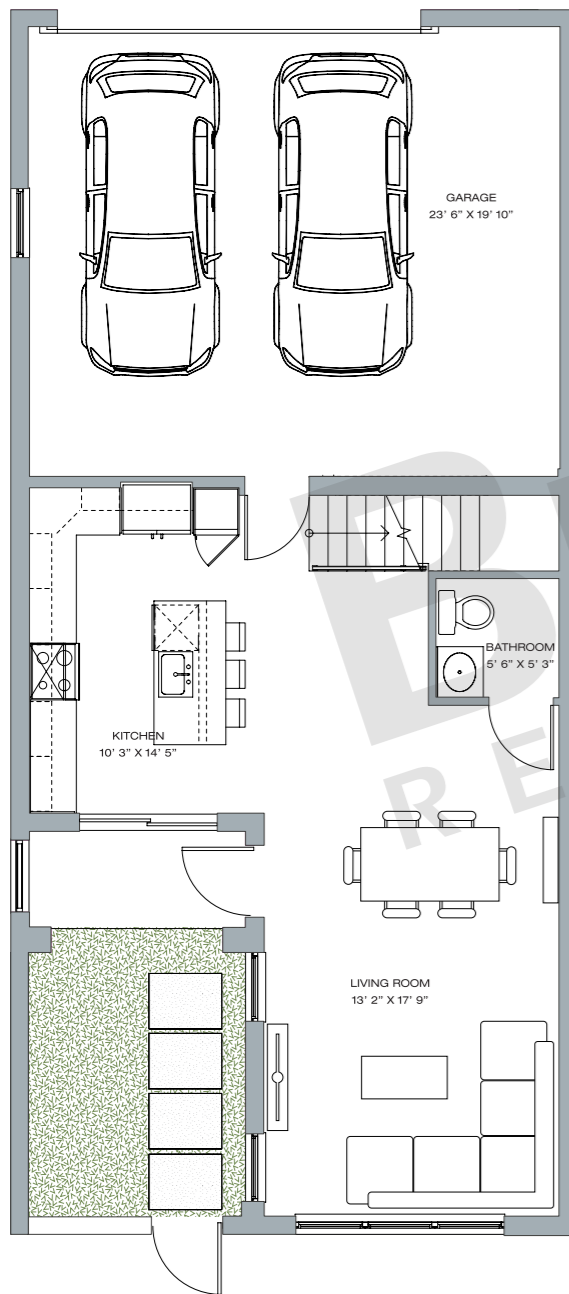
CANARIAS

AT DOWNTOWN DORAL

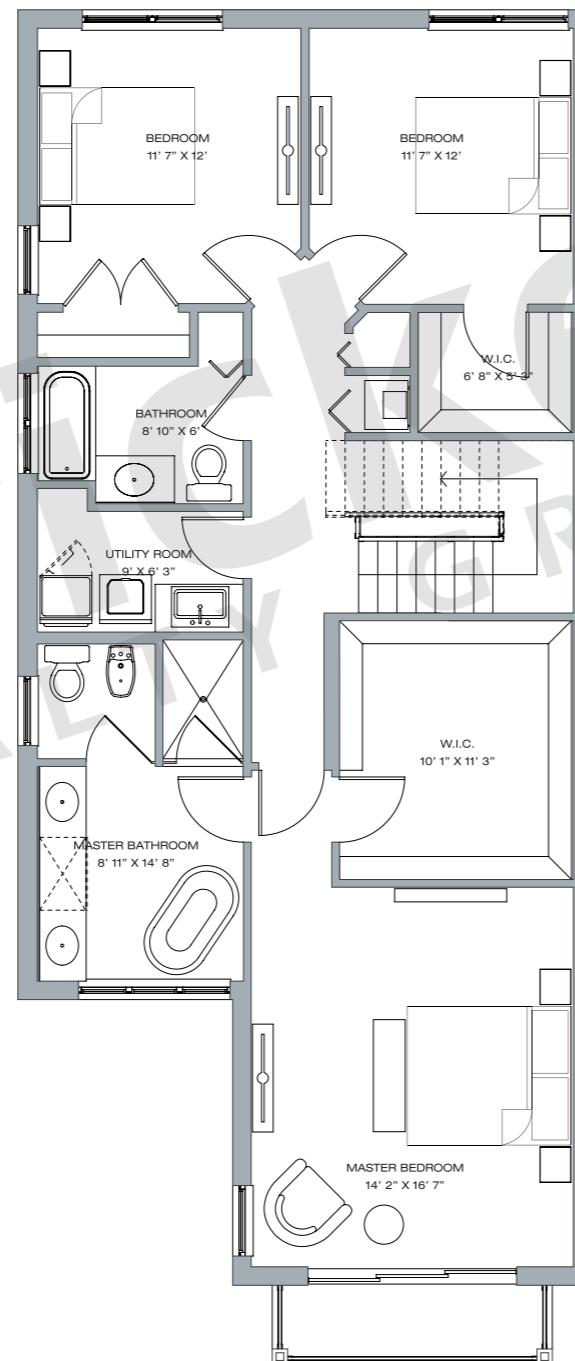
TAHITI COLLECTION TOWNHOMES

MODEL C · 3-STORY

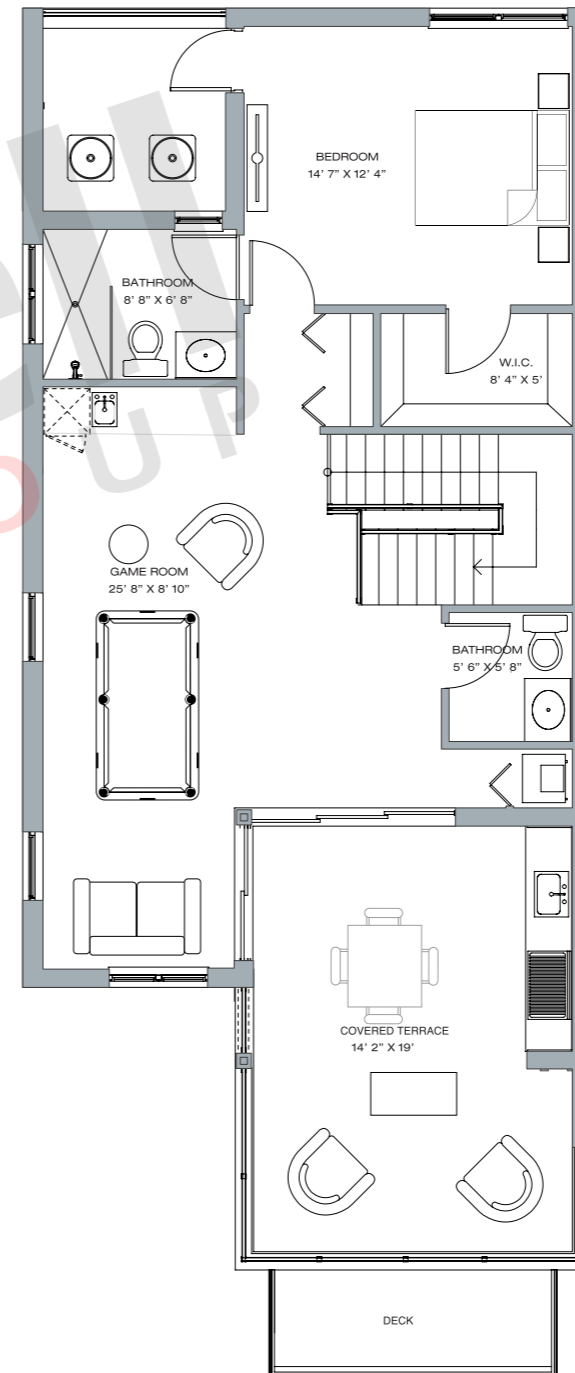
4 BEDROOMS · 3.5.5 BATHS · 2-CAR GARAGE · UTILITY ROOM · ROOF COVERED TERRACE W/GAME ROOM, DECK AND WET BAR · ELEVATOR OPTION



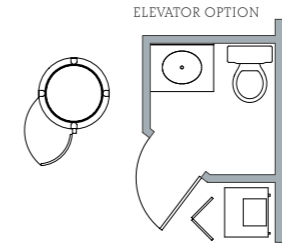
1ST FLOOR



2ND FLOOR



3RD FLOOR



	SQ FT	M ²
Interior	2,757	256.1
Balcony	54	5.0
Covered Porch	53	4.9
Garage	540	50.2
Covered Terrace	155	14.4
Deck	213	19.8
Total	3,772	350.4



Brickell REALTY GROUP

2071 NW 112th Avenue, Miami, FL 33172

www.brickell-realty.com/Canarias.html

Oral representation cannot be relied upon as correctly stating representations of the developer. Pictures of homes and condos may not reflect the final products which may vary. Dimensions, specifications, improvements, rendering, plans, land uses, materials, amenities, prices, and availability are subject to change at the developer's discretion without notice.

Stated dimensions are approximate and measured to the exterior boundaries of the exterior walls and the centerline of interior demising walls which in fact vary from the dimensions that would be determined by using the description and definition of the "Unit" set forth in the Declaration (which generally only includes the interior airspace between the perimeter walls and excludes interior structural components).