

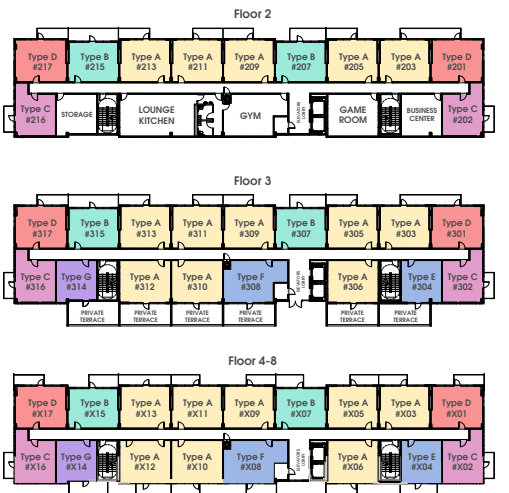
The Residences at  
DolphinCitiCenter

Type A - Typical

Floors 2-8

1 Bedroom · 1 Bath

	SQ FT	M <sup>2</sup>
Interior	527	49
Balcony (Varies)	69	6
Total	596	55



Brickell  
REALTY GROUP

2071 NW 112th Avenue, Miami, FL 33172

[www.brickell-realty.com/DolphinCitiCenter.html](http://www.brickell-realty.com/DolphinCitiCenter.html)

Oral representation cannot be relied upon as correctly stating representations of the developer. Pictures of homes and condos may not reflect the final products which may vary. Dimensions, specifications, improvements, rendering, plans, land uses, materials, amenities, prices, and availability are subject to change at the developer's discretion without notice.

Stated dimensions are approximate and measured to the exterior boundaries of the exterior walls and the centerline of interior demising walls which in fact vary from the dimensions that would be determined by using the description and definition of the "Unit" set forth in the Declaration (which generally only includes the interior airspace between the perimeter walls and excludes interior structural components).

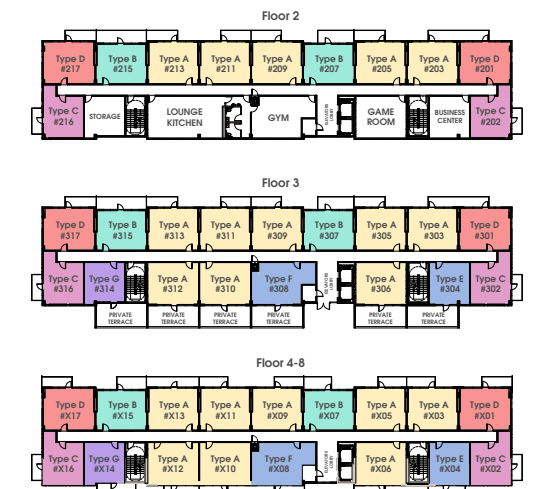
# The Residences at DolphinCitiCenter

## Type B - Typical

Floors 2-8

1 Bedroom · 1 Bath

	SQ FT	M <sup>2</sup>
Interior	498	46
Balcony (Varies)	69	6
<b>Total</b>	<b>567</b>	<b>52</b>



**Brickell**  
REALTY GROUP

2071 NW 112th Avenue, Miami, FL 33172

[www.brickell-realty.com/DolphinCitiCenter.html](http://www.brickell-realty.com/DolphinCitiCenter.html)

Oral representation cannot be relied upon as correctly stating representations of the developer. Pictures of homes and condos may not reflect the final products which may vary. Dimensions, specifications, improvements, rendering, plans, land uses, materials, amenities, prices, and availability are subject to change at the developer's discretion without notice.

Stated dimensions are approximate and measured to the exterior boundaries of the exterior walls and the centerline of interior demising walls which in fact vary from the dimensions that would be determined by using the description and definition of the "Unit" set forth in the Declaration (which generally only includes the interior airspace between the perimeter walls and excludes interior structural components).

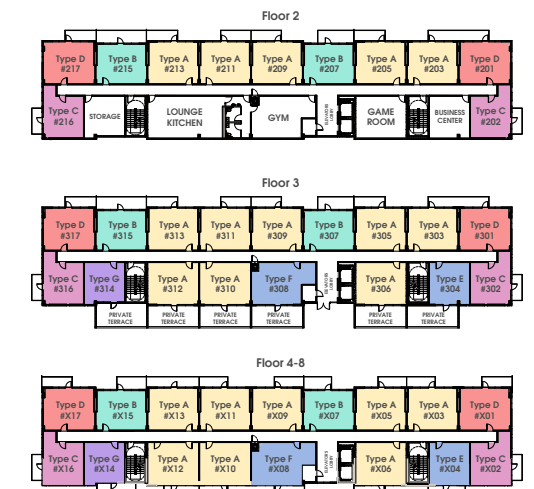
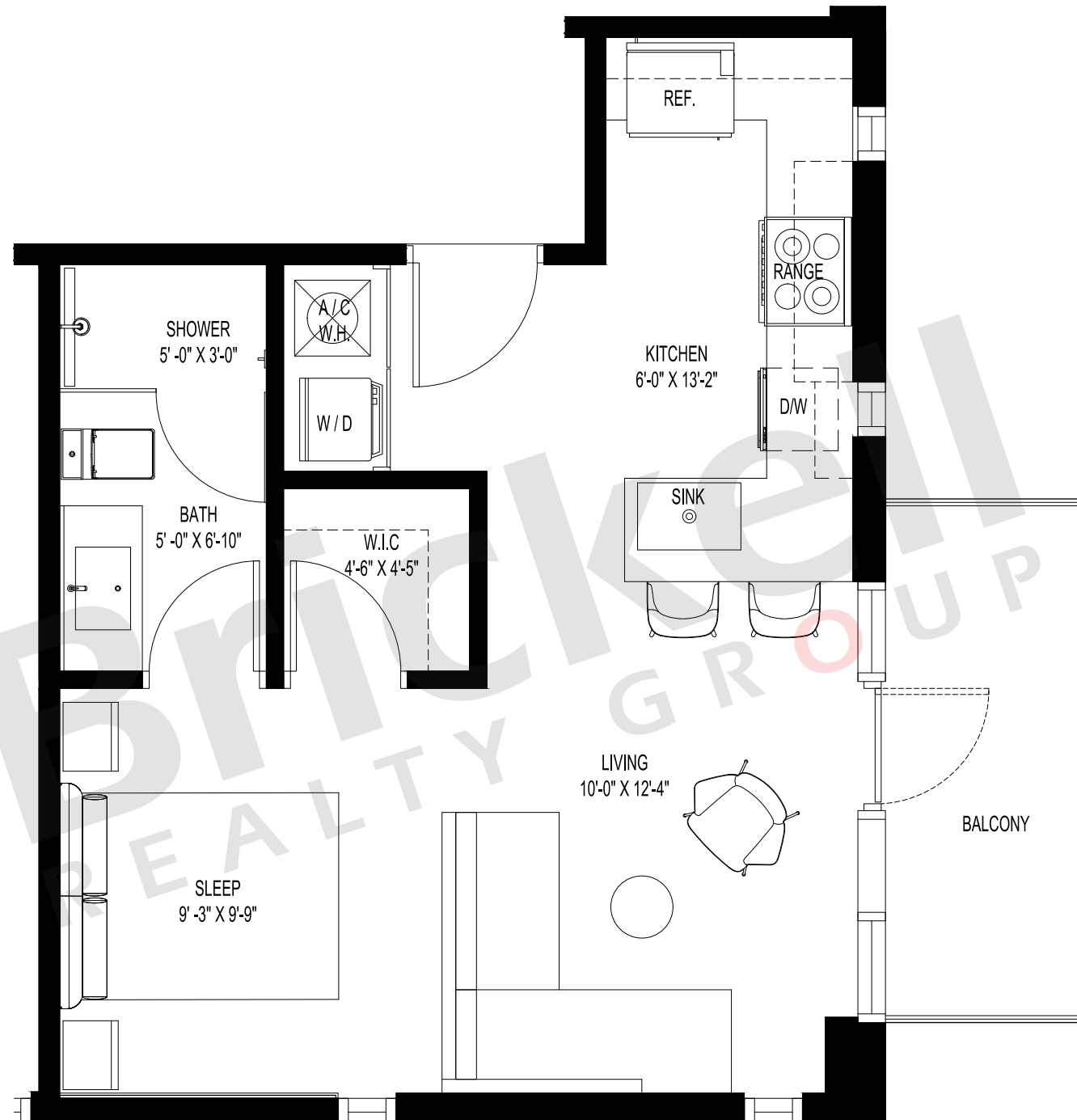
# The Residences at DolphinCitiCenter

## Type C - Typical

Floors 2-8

Studio

	SQ FT	M <sup>2</sup>
Interior	465	43
Balcony (Varies)	69	6
<b>Total</b>	<b>534</b>	<b>49</b>



**Brickell**  
REALTY GROUP

2071 NW 112th Avenue, Miami, FL 33172

[www.brickell-realty.com/DolphinCitiCenter.html](http://www.brickell-realty.com/DolphinCitiCenter.html)

Oral representation cannot be relied upon as correctly stating representations of the developer. Pictures of homes and condos may not reflect the final products which may vary. Dimensions, specifications, improvements, rendering, plans, land uses, materials, amenities, prices, and availability are subject to change at the developer's discretion without notice.

Stated dimensions are approximate and measured to the exterior boundaries of the exterior walls and the centerline of interior demising walls which in fact vary from the dimensions that would be determined by using the description and definition of the "Unit" set forth in the Declaration (which generally only includes the interior airspace between the perimeter walls and excludes interior structural components).

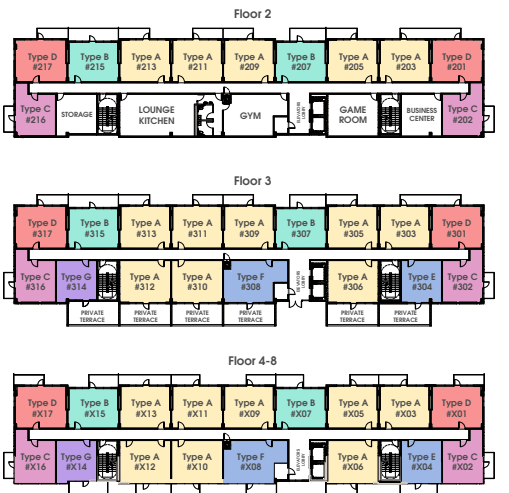
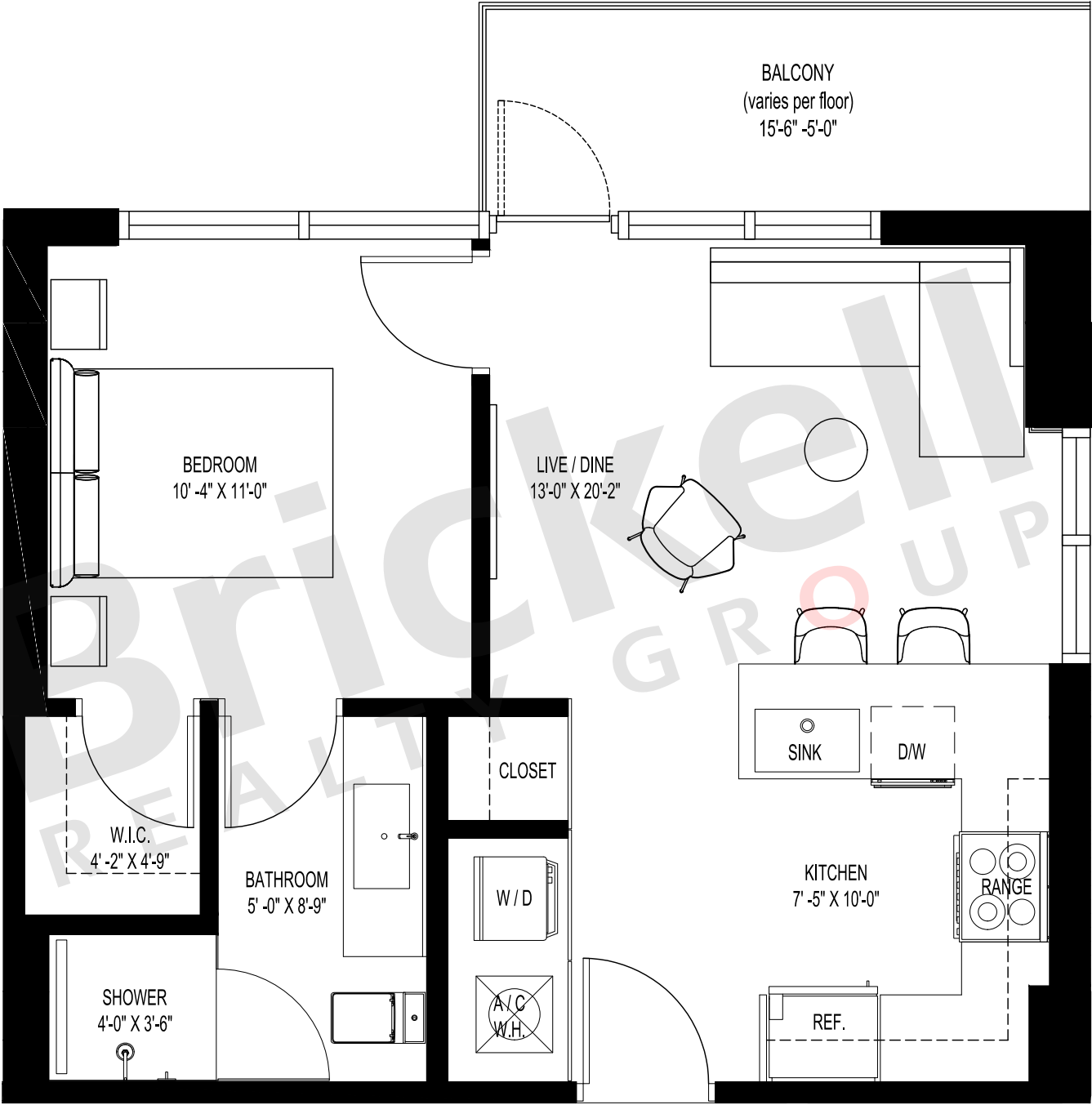
The Residences at  
DolphinCitiCenter

Type D - Typical

Floors 2-8

1 Bedroom · 1 Bath

	SQ FT	M <sup>2</sup>
Interior	543	50
Balcony (Varies)	77	7
Total	620	57



Brickell  
REALTY GROUP

2071 NW 112th Avenue, Miami, FL 33172

[www.brickell-realty.com/DolphinCitiCenter.html](http://www.brickell-realty.com/DolphinCitiCenter.html)

Oral representation cannot be relied upon as correctly stating representations of the developer. Pictures of homes and condos may not reflect the final products which may vary. Dimensions, specifications, improvements, rendering, plans, land uses, materials, amenities, prices, and availability are subject to change at the developer's discretion without notice.

Stated dimensions are approximate and measured to the exterior boundaries of the exterior walls and the centerline of interior demising walls which in fact vary from the dimensions that would be determined by using the description and definition of the "Unit" set forth in the Declaration (which generally only includes the interior airspace between the perimeter walls and excludes interior structural components).

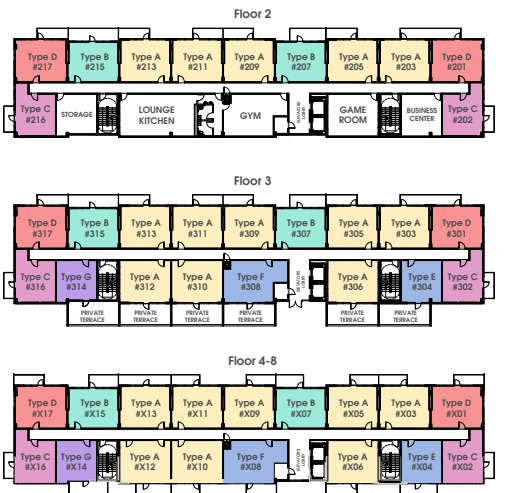
The Residences at  
DolphinCitiCenter

Type E - Typical

Floors 3-8

Studio

	SQ FT	M <sup>2</sup>
Interior	419	39
Balcony (Varies)	105	10
Total	524	49



Brickell  
REALTY GROUP

2071 NW 112th Avenue, Miami, FL 33172

[www.brickell-realty.com/DolphinCitiCenter.html](http://www.brickell-realty.com/DolphinCitiCenter.html)

Oral representation cannot be relied upon as correctly stating representations of the developer. Pictures of homes and condos may not reflect the final products which may vary. Dimensions, specifications, improvements, rendering, plans, land uses, materials, amenities, prices, and availability are subject to change at the developer's discretion without notice.

Stated dimensions are approximate and measured to the exterior boundaries of the exterior walls and the centerline of interior demising walls which in fact vary from the dimensions that would be determined by using the description and definition of the "Unit" set forth in the Declaration (which generally only includes the interior airspace between the perimeter walls and excludes interior structural components).

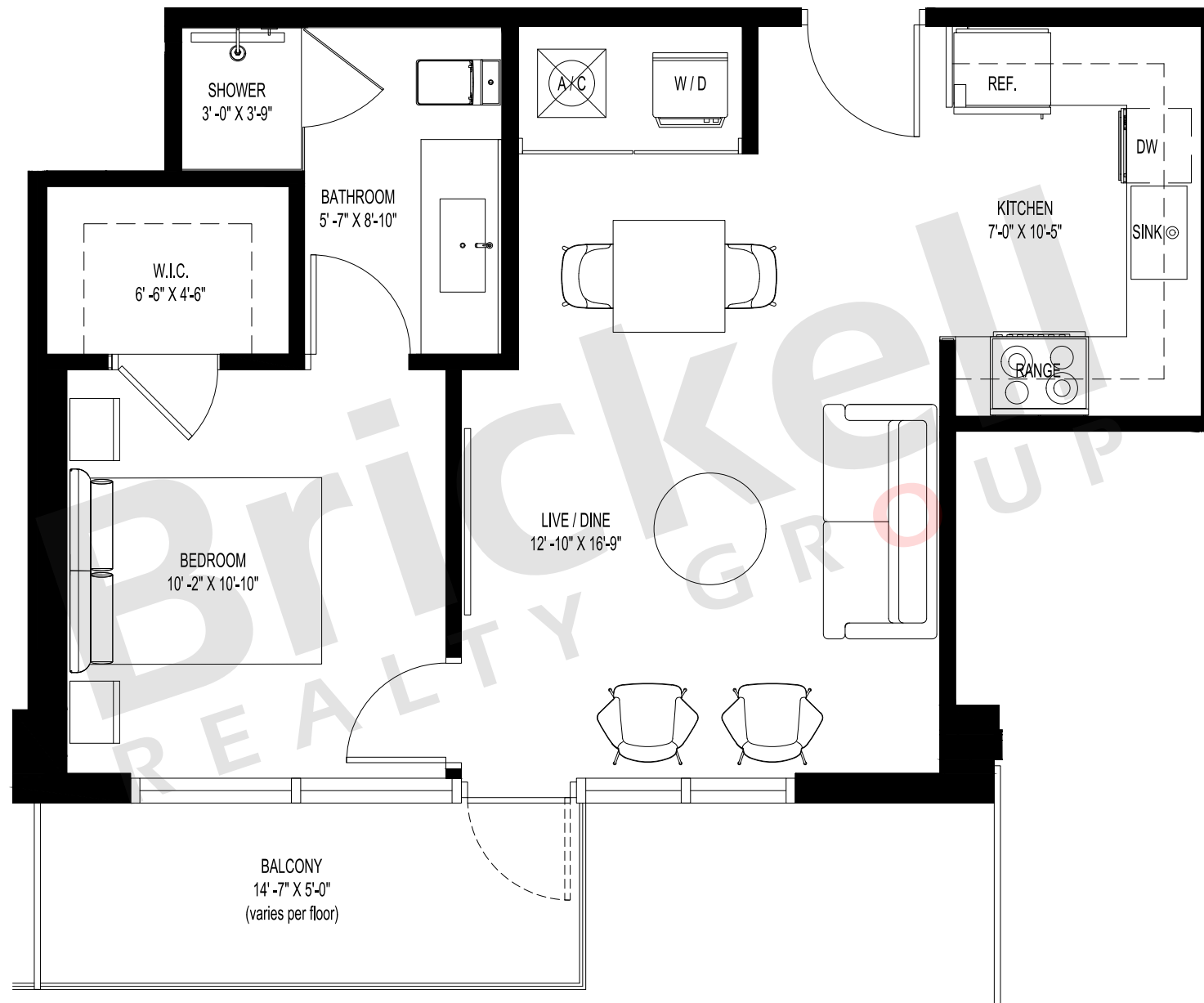
# The Residences at DolphinCitiCenter

## Type F - Typical

Floors 3-8

1 Bedroom · 1 Bath

	SQ FT	M <sup>2</sup>
Interior	578	54
Balcony (Varies)	73	7
<b>Total</b>	<b>651</b>	<b>61</b>



**Brickell**  
REALTY GROUP

2071 NW 112th Avenue, Miami, FL 33172

[www.brickell-realty.com/BrickellCitiCenter.html](http://www.brickell-realty.com/BrickellCitiCenter.html)

Oral representation cannot be relied upon as correctly stating representations of the developer. Pictures of homes and condos may not reflect the final products which may vary. Dimensions, specifications, improvements, rendering, plans, land uses, materials, amenities, prices, and availability are subject to change at the developer's discretion without notice.

Stated dimensions are approximate and measured to the exterior boundaries of the exterior walls and the centerline of interior demising walls which in fact vary from the dimensions that would be determined by using the description and definition of the "Unit" set forth in the Declaration (which generally only includes the interior airspace between the perimeter walls and excludes interior structural components).

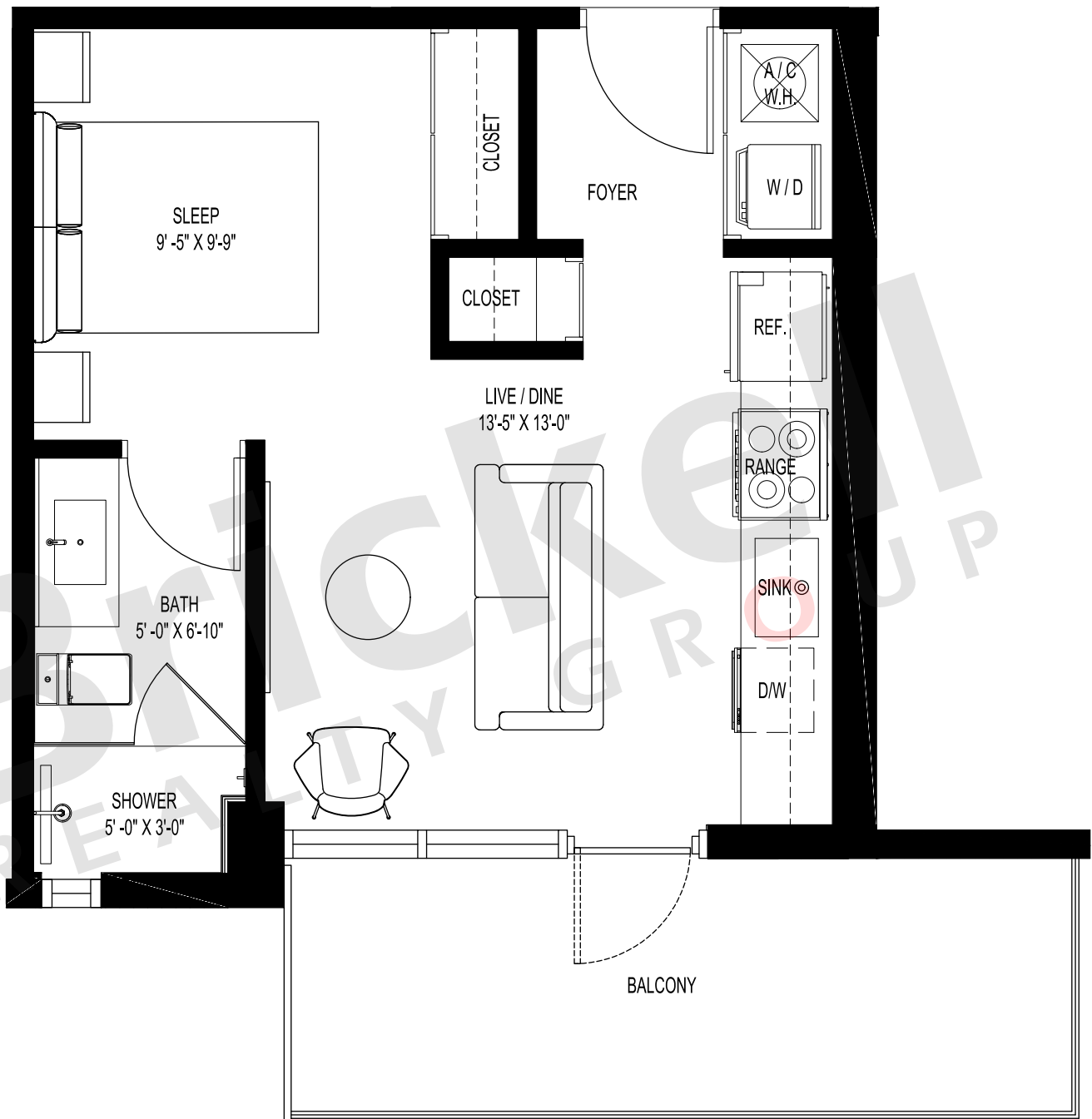
The Residences at  
DolphinCitiCenter

Type G - Typical

Floors 3-8

Studio

	SQ FT	M <sup>2</sup>
Interior	403	37
Balcony (Varies)	69	6
Total	472	43



Brickell  
REALTY GROUP

2071 NW 112th Avenue, Miami, FL 33172

[www.brickell-realty.com/DolphinCitiCenter.html](http://www.brickell-realty.com/DolphinCitiCenter.html)

Oral representation cannot be relied upon as correctly stating representations of the developer. Pictures of homes and condos may not reflect the final products which may vary. Dimensions, specifications, improvements, rendering, plans, land uses, materials, amenities, prices, and availability are subject to change at the developer's discretion without notice.

Stated dimensions are approximate and measured to the exterior boundaries of the exterior walls and the centerline of interior demising walls which in fact vary from the dimensions that would be determined by using the description and definition of the "Unit" set forth in the Declaration (which generally only includes the interior airspace between the perimeter walls and excludes interior structural components).