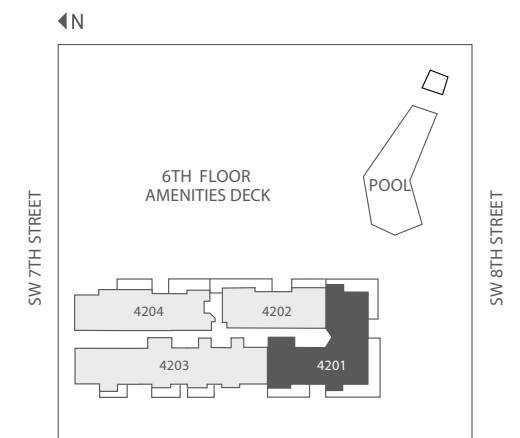
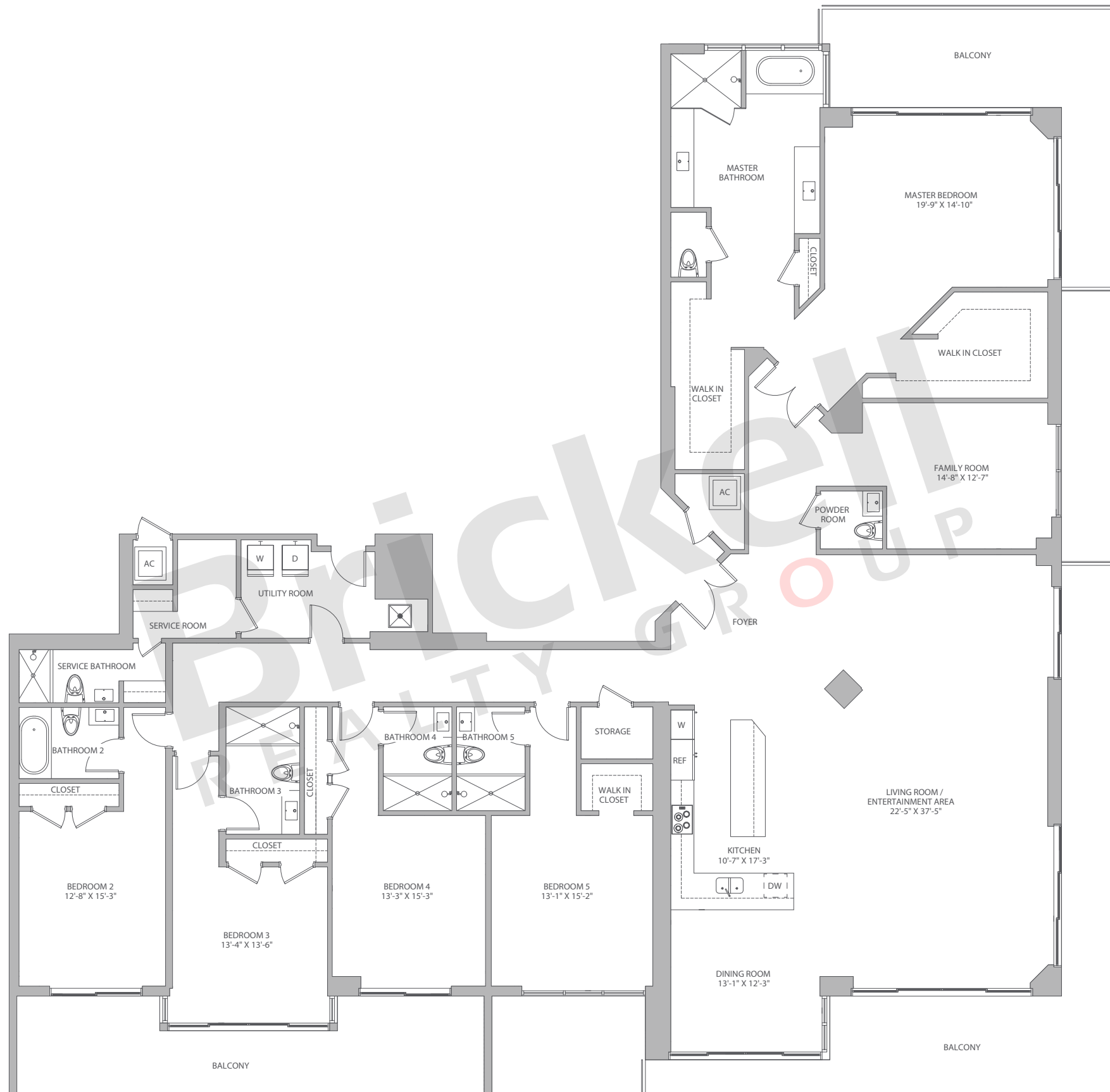


## Penthouse 4201

Floor: 42<sup>nd</sup>

5 Bedrooms · 6.5 Baths · Dining  
Utility · Service Quarters

	SQ FT	M <sup>2</sup>
Interior	4,754	442.0
Terrace	1,035	96.0
<b>Total</b>	<b>5,789</b>	<b>538.0</b>



**Brickell**  
REALTY GROUP

2071 NW 112th Avenue, Miami, FL 33172

[www.brickell-realty.com/BCC-Rise.html](http://www.brickell-realty.com/BCC-Rise.html)

Oral representation cannot be relied upon as correctly stating representations of the developer. Pictures of homes and condos may not reflect the final products which may vary. Dimensions, specifications, improvements, rendering, plans, land uses, materials, amenities, prices, and availability are subject to change at the developer's discretion without notice.

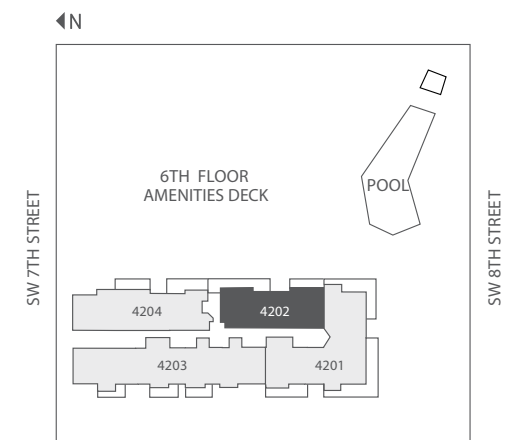
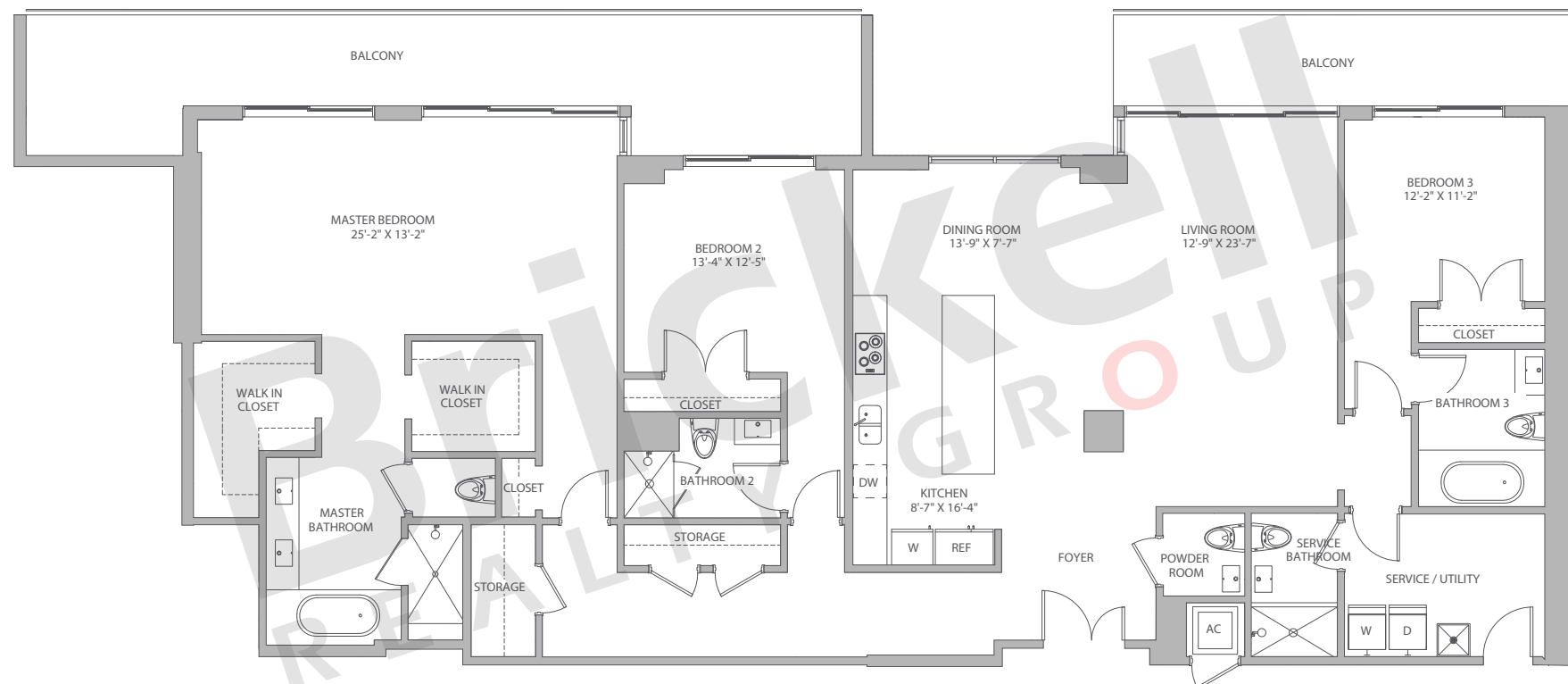
Stated dimensions are approximate and measured to the exterior boundaries of the exterior walls and the centerline of interior demising walls which in fact vary from the dimensions that would be determined by using the description and definition of the "Unit" set forth in the Declaration (which generally only includes the interior airspace between the perimeter walls and excludes interior structural components).

## Penthouse 4202

Floor: 42<sup>nd</sup>

3 Bedrooms · 4.5 Baths  
Utility · Service Quarters

	SQ FT	M <sup>2</sup>
Interior	2,686	250.0
Terrace	501	47.0
<b>Total</b>	<b>3,187</b>	<b>297.0</b>



# Brickell

REALTY GROUP

2071 NW 112th Avenue, Miami, FL 33172  
[www.brickell-realty.com/BCC-Rise.html](http://www.brickell-realty.com/BCC-Rise.html)

Oral representation cannot be relied upon as correctly stating representations of the developer. Pictures of homes and condos may not reflect the final products which may vary. Dimensions, specifications, improvements, rendering, plans, land uses, materials, amenities, prices, and availability are subject to change at the developer's discretion without notice.

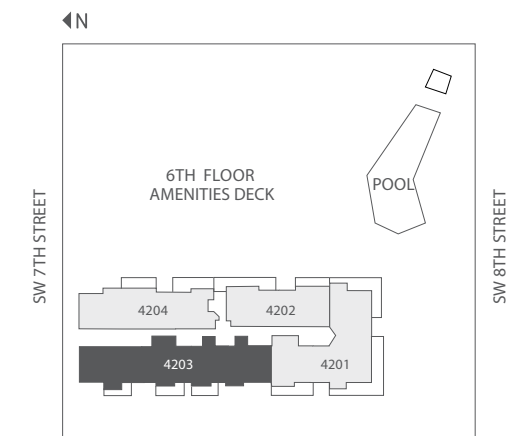
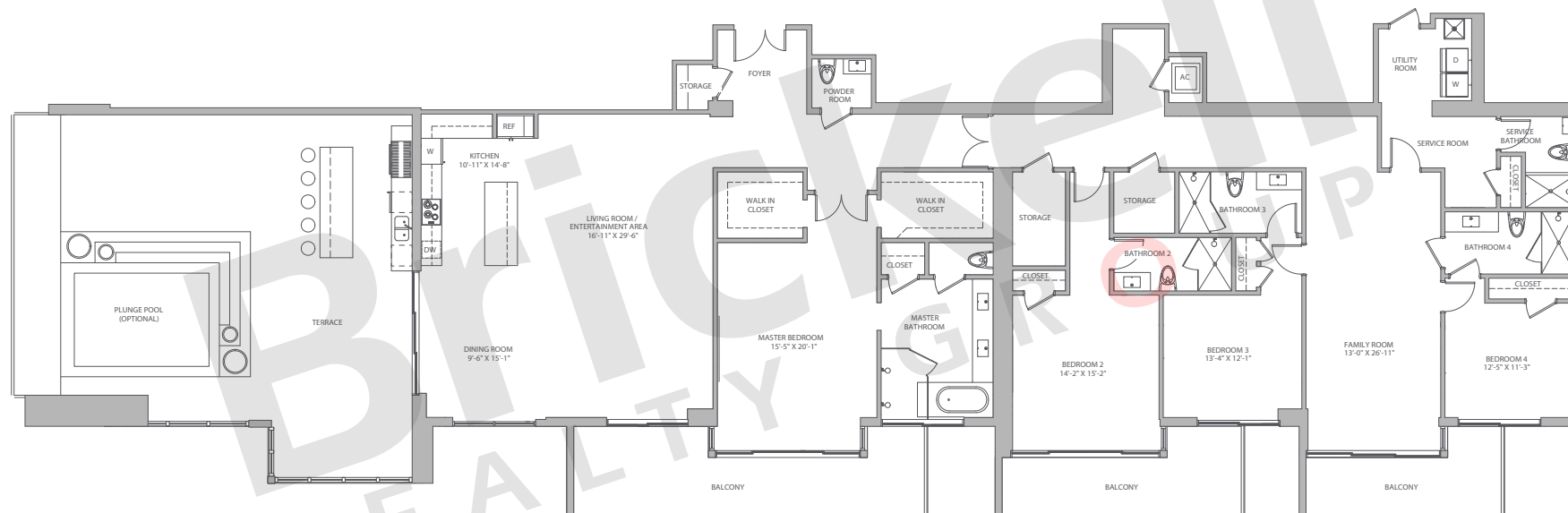
Stated dimensions are approximate and measured to the exterior boundaries of the exterior walls and the centerline of interior demising walls which in fact vary from the dimensions that would be determined by using the description and definition of the "Unit" set forth in the Declaration (which generally only includes the interior airspace between the perimeter walls and excludes interior structural components).

## Penthouse 4203

Floor: 42<sup>nd</sup>

4 Bedrooms · 5.5 Baths · Family  
Service Quarters · Terrace

	SQ FT	M <sup>2</sup>
Interior	3,904	363.0
Balcony	509	47.0
Terrace	1,174	109.0
<b>Total</b>	<b>5,587</b>	<b>519.0</b>



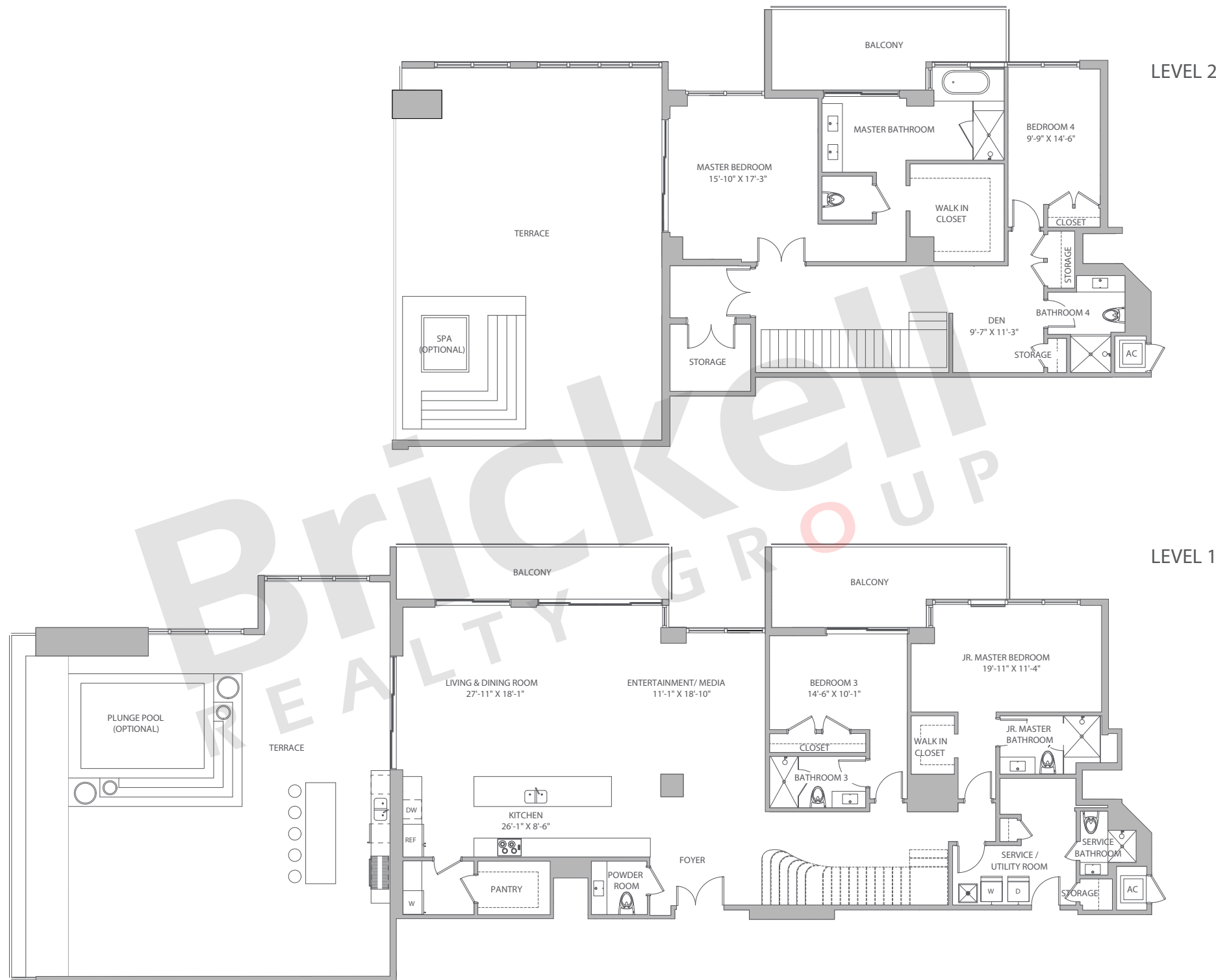
**Brickell**  
REALTY GROUP

2071 NW 112th Avenue, Miami, FL 33172

[www.brickell-realty.com/BCC-Rise.html](http://www.brickell-realty.com/BCC-Rise.html)

Oral representation cannot be relied upon as correctly stating representations of the developer. Pictures of homes and condos may not reflect the final products which may vary. Dimensions, specifications, improvements, rendering, plans, land uses, materials, amenities, prices, and availability are subject to change at the developer's discretion without notice.

Stated dimensions are approximate and measured to the exterior boundaries of the exterior walls and the centerline of interior demising walls which in fact vary from the dimensions that would be determined by using the description and definition of the "Unit" set forth in the Declaration (which generally only includes the interior airspace between the perimeter walls and excludes interior structural components).

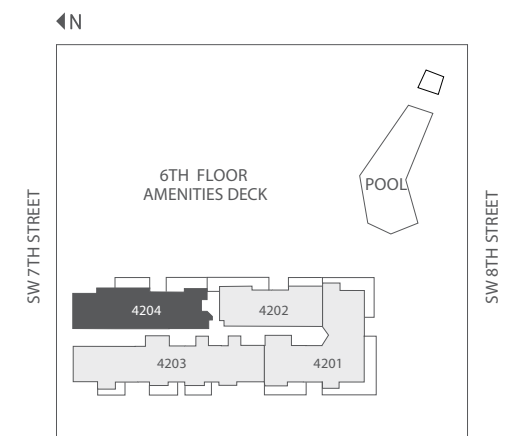


## Penthouse 4204

Floor: 42<sup>nd</sup> & 43<sup>rd</sup>

4 Bedrooms · 5.5 Baths · Utility  
Den · Service Quarters · Terrace

	SQ FT	M <sup>2</sup>
Interior	3,936	366.0
Balcony	528	49.0
Terrace	2,515	234.0
<b>Total</b>	<b>6,979</b>	<b>649.0</b>



**Brickell**  
REALTY GROUP

2071 NW 112th Avenue, Miami, FL 33172

[www.brickell-realty.com/BCC-Rise.html](http://www.brickell-realty.com/BCC-Rise.html)

Oral representation cannot be relied upon as correctly stating representations of the developer. Pictures of homes and condos may not reflect the final products which may vary. Dimensions, specifications, improvements, rendering, plans, land uses, materials, amenities, prices, and availability are subject to change at the developer's discretion without notice.

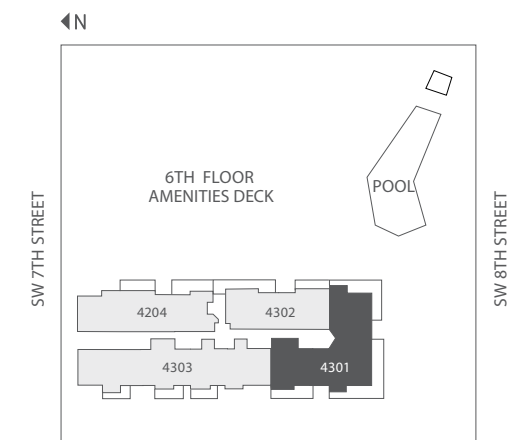
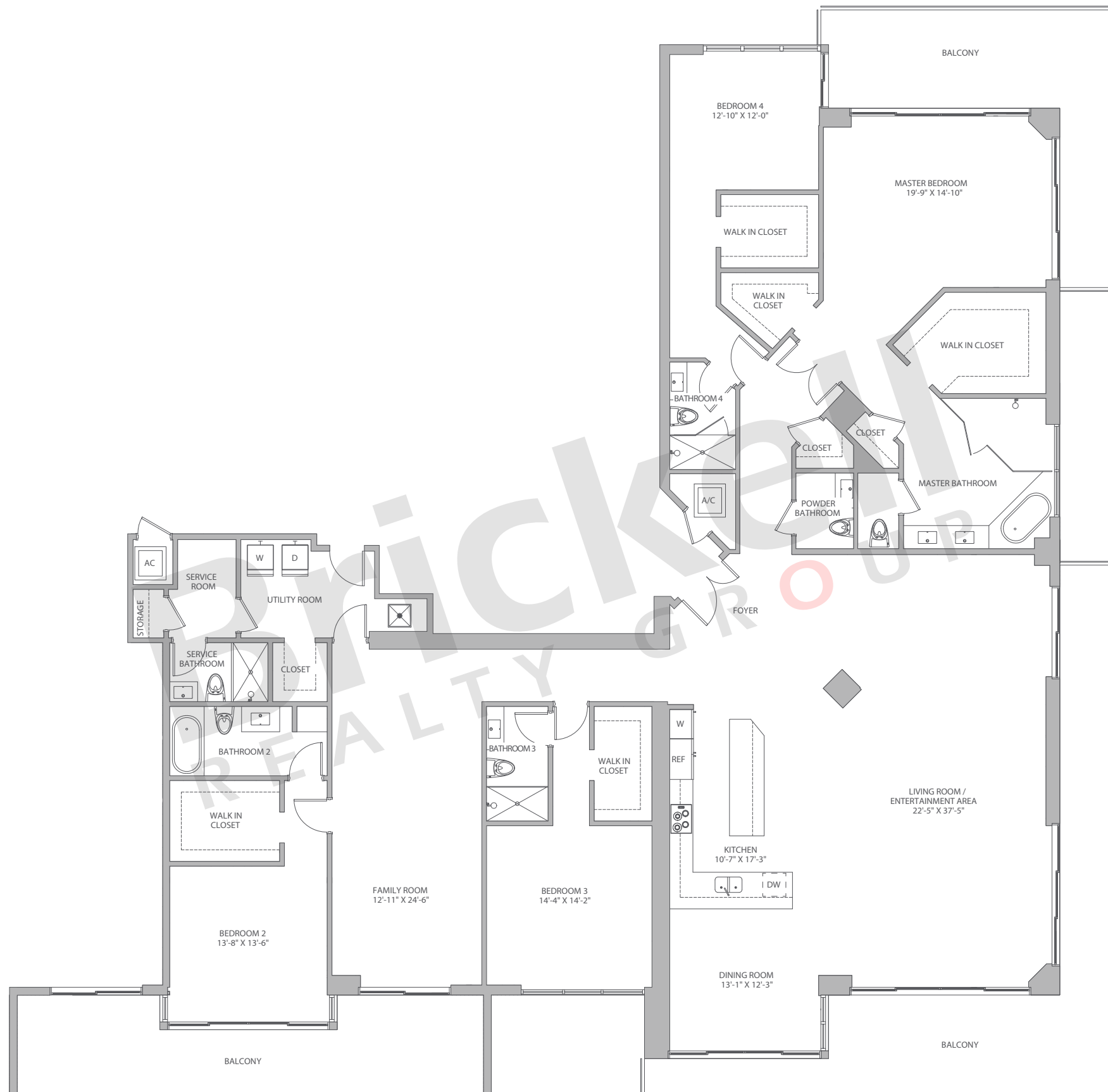
Stated dimensions are approximate and measured to the exterior boundaries of the exterior walls and the centerline of interior demising walls which in fact vary from the dimensions that would be determined by using the description and definition of the "Unit" set forth in the Declaration (which generally only includes the interior airspace between the perimeter walls and excludes interior structural components).

## Penthouse 4301

Floor: 43<sup>rd</sup>

4 Bedrooms · 5.5 Baths · Family  
Utility · Service Quarters

	SQ FT	M <sup>2</sup>
Interior	4,335	403.0
Terrace	1,035	96.0
<b>Total</b>	<b>5,370</b>	<b>499.0</b>



**Brickell**  
REALTY GROUP

2071 NW 112th Avenue, Miami, FL 33172

[www.brickell-realty.com/BCC-Rise.html](http://www.brickell-realty.com/BCC-Rise.html)

Oral representation cannot be relied upon as correctly stating representations of the developer. Pictures of homes and condos may not reflect the final products which may vary. Dimensions, specifications, improvements, rendering, plans, land uses, materials, amenities, prices, and availability are subject to change at the developer's discretion without notice.

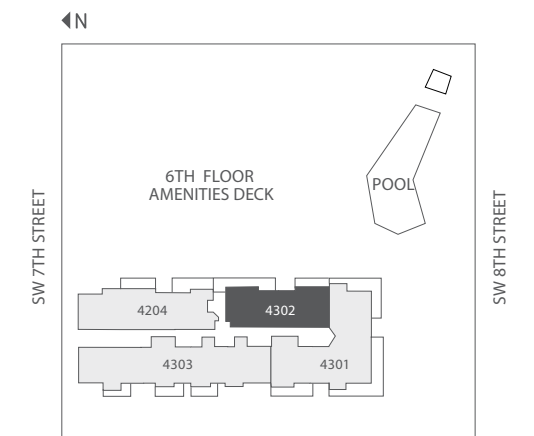
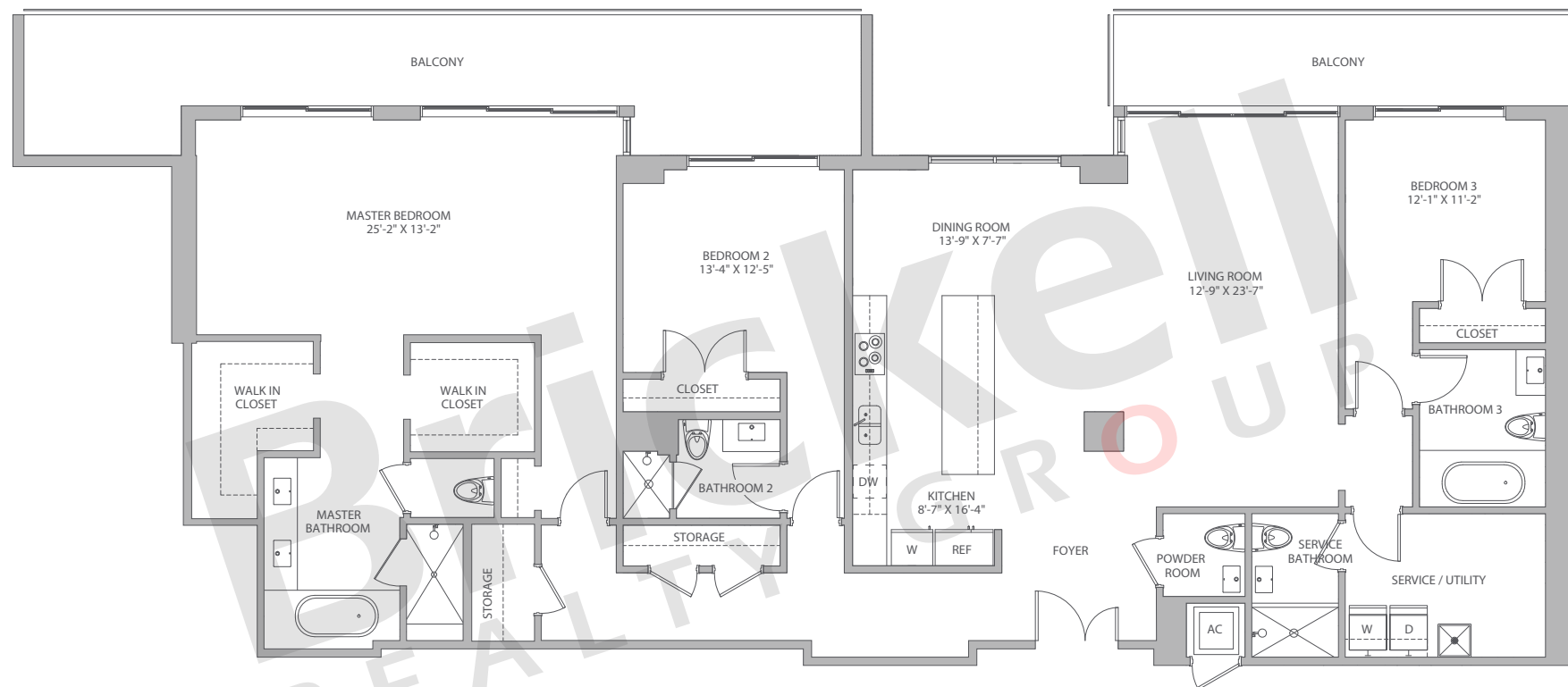
Stated dimensions are approximate and measured to the exterior boundaries of the exterior walls and the centerline of interior demising walls which in fact vary from the dimensions that would be determined by using the description and definition of the "Unit" set forth in the Declaration (which generally only includes the interior airspace between the perimeter walls and excludes interior structural components).

## Penthouse 4302

Floor: 43<sup>rd</sup>

3 Bedrooms · 4.5 Baths  
Utility · Service Quarters

	SQ FT	M <sup>2</sup>
Interior	2,686	250.0
Terrace	501	47.0
<b>Total</b>	<b>3,187</b>	<b>297.0</b>



# Brickell

REALTY GROUP

2071 NW 112th Avenue, Miami, FL 33172

[www.brickell-realty.com/BCC-Rise.html](http://www.brickell-realty.com/BCC-Rise.html)

Oral representation cannot be relied upon as correctly stating representations of the developer. Pictures of homes and condos may not reflect the final products which may vary. Dimensions, specifications, improvements, rendering, plans, land uses, materials, amenities, prices, and availability are subject to change at the developer's discretion without notice.

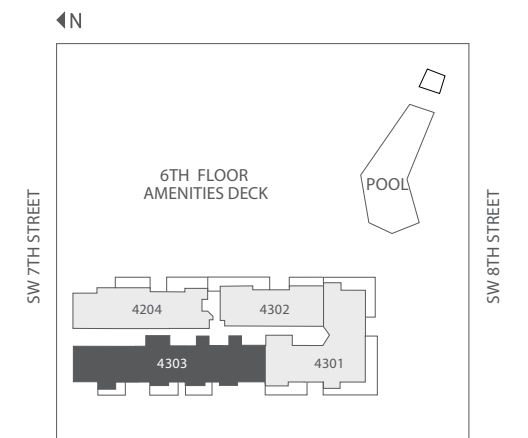
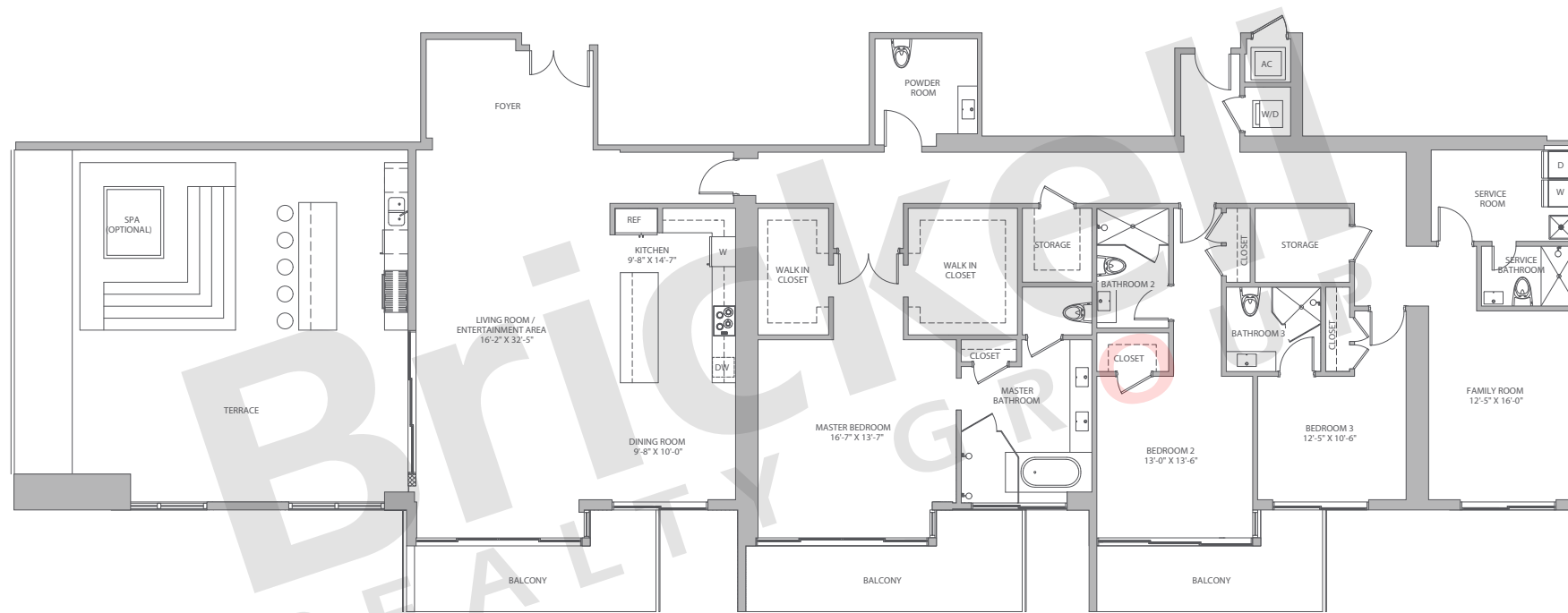
Stated dimensions are approximate and measured to the exterior boundaries of the exterior walls and the centerline of interior demising walls which in fact vary from the dimensions that would be determined by using the description and definition of the "Unit" set forth in the Declaration (which generally only includes the interior airspace between the perimeter walls and excludes interior structural components).

## Penthouse 4303

Floor: 43<sup>rd</sup>

3 Bedrooms · 4.5 Baths · Dining  
Service Quarters · Terrace

	SQ FT	M <sup>2</sup>
Interior	3,430	319.0
Balcony	398	37.0
Terrace	943	88.0
<b>Total</b>	<b>4,771</b>	<b>444.0</b>



**Brickell**  
REALTY GROUP

2071 NW 112th Avenue, Miami, FL 33172

[www.brickell-realty.com/BCC-Rise.html](http://www.brickell-realty.com/BCC-Rise.html)

Oral representation cannot be relied upon as correctly stating representations of the developer. Pictures of homes and condos may not reflect the final products which may vary. Dimensions, specifications, improvements, rendering, plans, land uses, materials, amenities, prices, and availability are subject to change at the developer's discretion without notice.

Stated dimensions are approximate and measured to the exterior boundaries of the exterior walls and the centerline of interior demising walls which in fact vary from the dimensions that would be determined by using the description and definition of the "Unit" set forth in the Declaration (which generally only includes the interior airspace between the perimeter walls and excludes interior structural components).