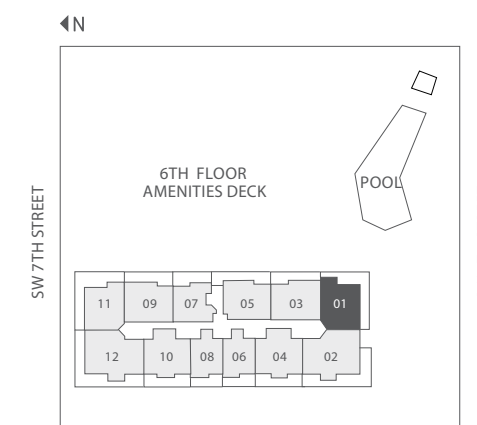
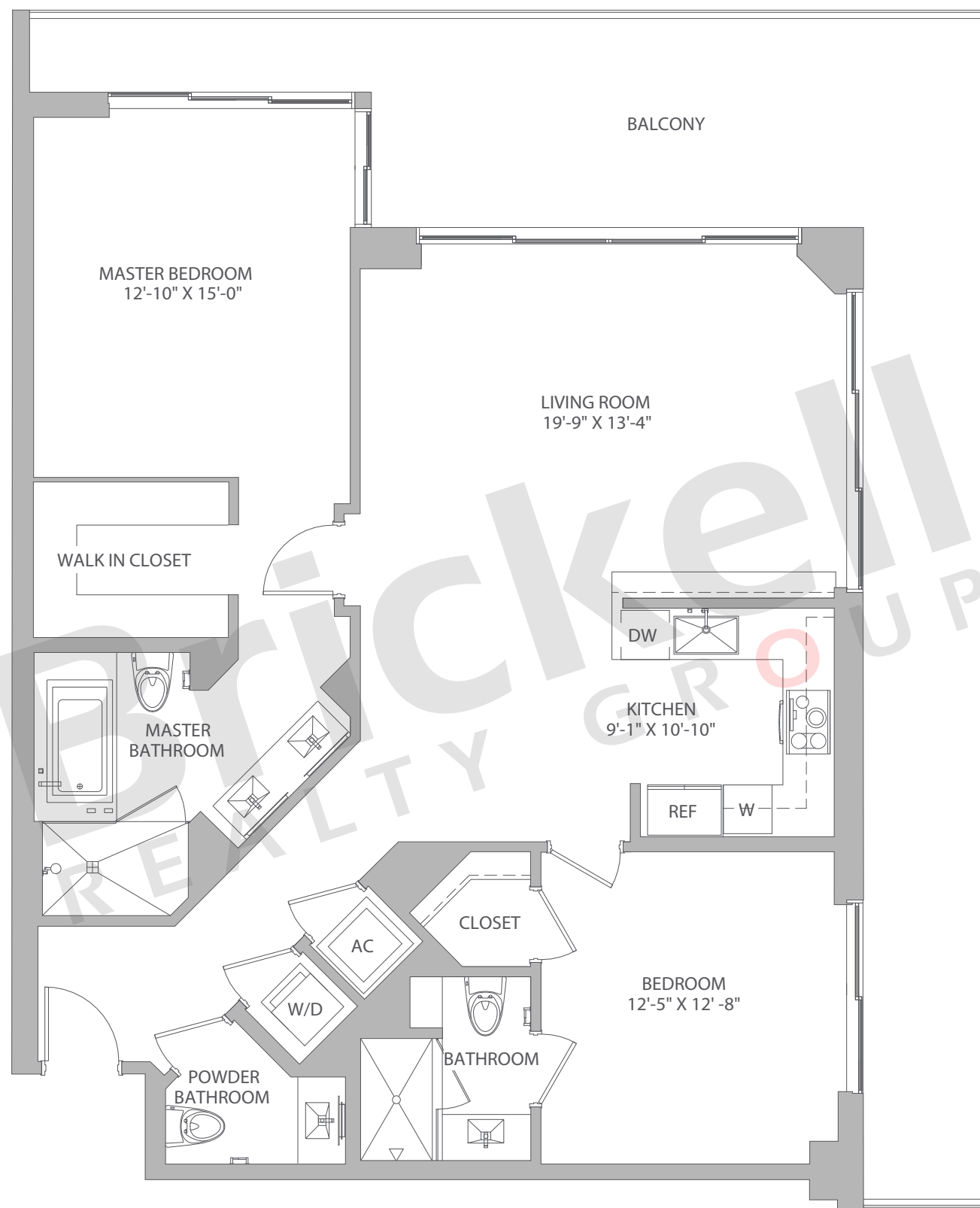


Line 01

Floors: 12, 14-36

2 Bedrooms · 2.5 Baths

	SQ FT	M ²
A/C - 12, 14-21	1,389	129
A/C - 22-33	1,384	129
A/C - 34-36	1,378	128
Balcony	292-452	27-42
Total	1,681-1,836	156-170



Brickell
REALTY GROUP

2071 NW 112th Avenue, Miami, FL 33172

www.brickell-realty.com/BCC-Rise.html

Oral representation cannot be relied upon as correctly stating representations of the developer. Pictures of homes and condos may not reflect the final products which may vary. Dimensions, specifications, improvements, rendering, plans, land uses, materials, amenities, prices, and availability are subject to change at the developer's discretion without notice.

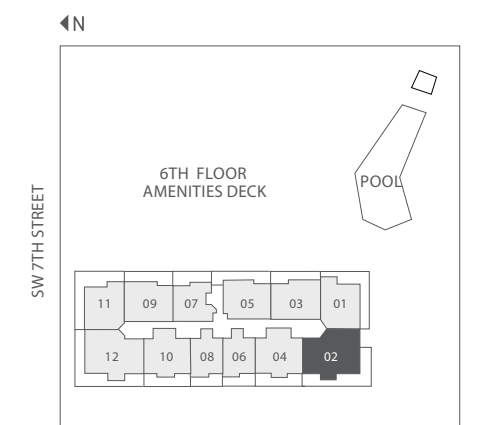
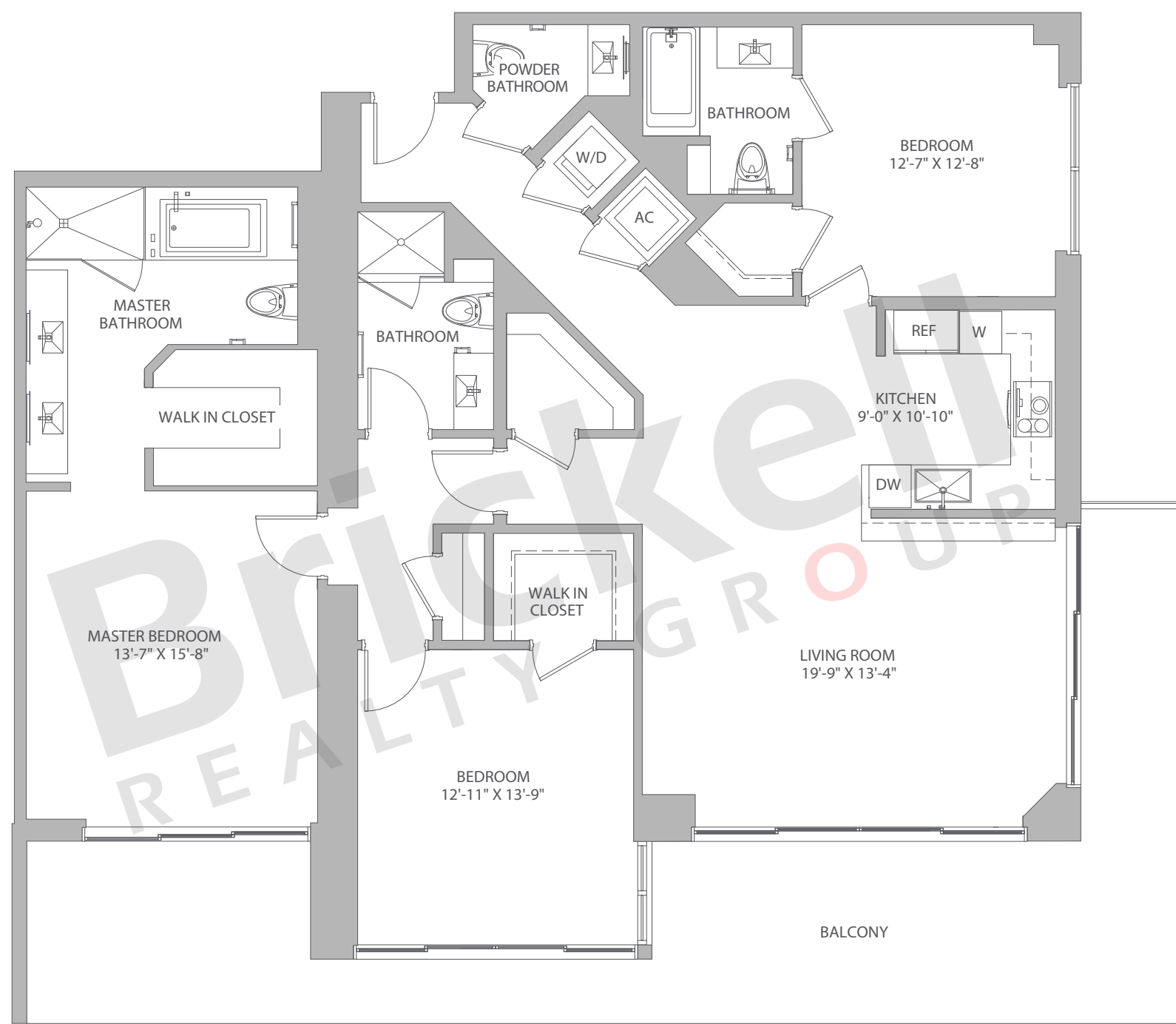
Stated dimensions are approximate and measured to the exterior boundaries of the exterior walls and the centerline of interior demising walls which in fact vary from the dimensions that would be determined by using the description and definition of the "Unit" set forth in the Declaration (which generally only includes the interior airspace between the perimeter walls and excludes interior structural components).

Line 02

Floors: 12, 14-36

3 Bedrooms · 3.5 Baths

	SQ FT	M ²
A/C - 12, 14-21	1,850	172
A/C - 22-33	1,853	172
A/C - 34-36	1,852	172
Balcony	446-450	41-42
Total	2,296-2,303	213-214



Brickell
REALTY GROUP

2071 NW 112th Avenue, Miami, FL 33172

www.brickell-realty.com/BCC-Rise.html

Oral representation cannot be relied upon as correctly stating representations of the developer. Pictures of homes and condos may not reflect the final products which may vary. Dimensions, specifications, improvements, rendering, plans, land uses, materials, amenities, prices, and availability are subject to change at the developer's discretion without notice.

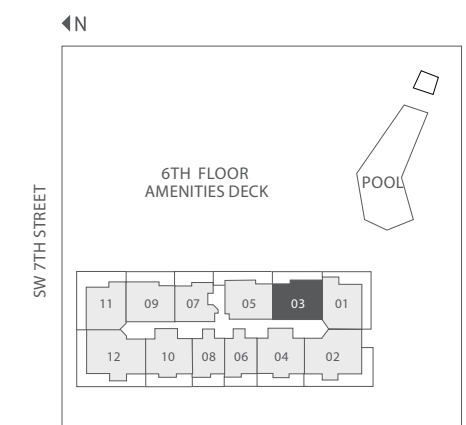
Stated dimensions are approximate and measured to the exterior boundaries of the exterior walls and the centerline of interior demising walls which in fact vary from the dimensions that would be determined by using the description and definition of the "Unit" set forth in the Declaration (which generally only includes the interior airspace between the perimeter walls and excludes interior structural components).

Line 03

Floors: 10, 12, 14-41

2 Bedrooms · 2.5 Baths

	SQ FT	M ²
A/C - 10	1,373	128
A/C - 12, 14-21	1,371	127
A/C - 22-33	1,376	128
A/C - 34-36	1,385	129
Balcony	85-276	8-26
Total	1,462-1,652	135-153



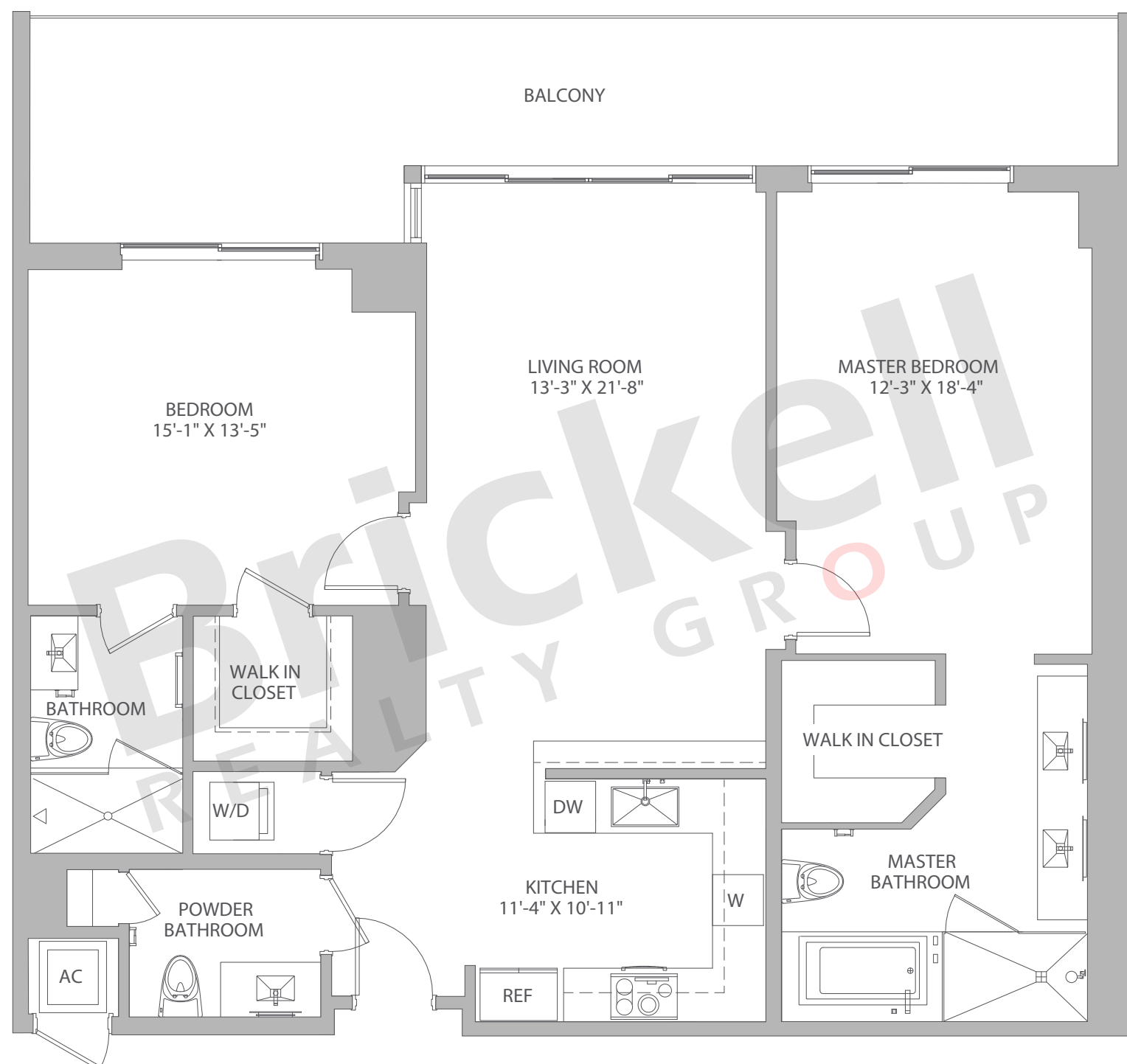
Brickell
REALTY GROUP

2071 NW 112th Avenue, Miami, FL 33172

www.brickell-realty.com/BCC-Rise.html

Oral representation cannot be relied upon as correctly stating representations of the developer. Pictures of homes and condos may not reflect the final products which may vary. Dimensions, specifications, improvements, rendering, plans, land uses, materials, amenities, prices, and availability are subject to change at the developer's discretion without notice.

Stated dimensions are approximate and measured to the exterior boundaries of the exterior walls and the centerline of interior demising walls which in fact vary from the dimensions that would be determined by using the description and definition of the "Unit" set forth in the Declaration (which generally only includes the interior airspace between the perimeter walls and excludes interior structural components).

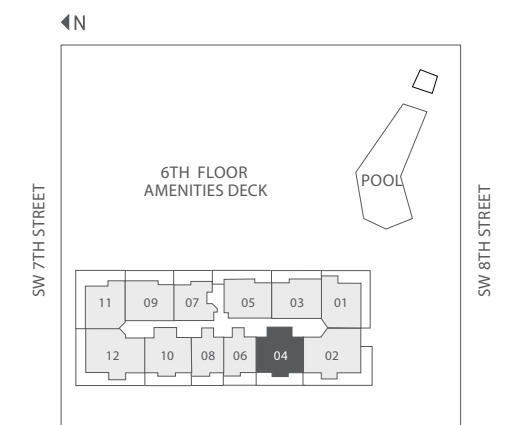


Line 04

Floors: 12, 14-41

2 Bedrooms · 2.5 Baths · Den

	SQ FT	M ²
A/C - 12, 14-21	1,519	141
A/C - 22-33	1,520	141
A/C - 34-41	1,528	142
Balcony	84-297	8-28
Total	1,467-1,825	136-169



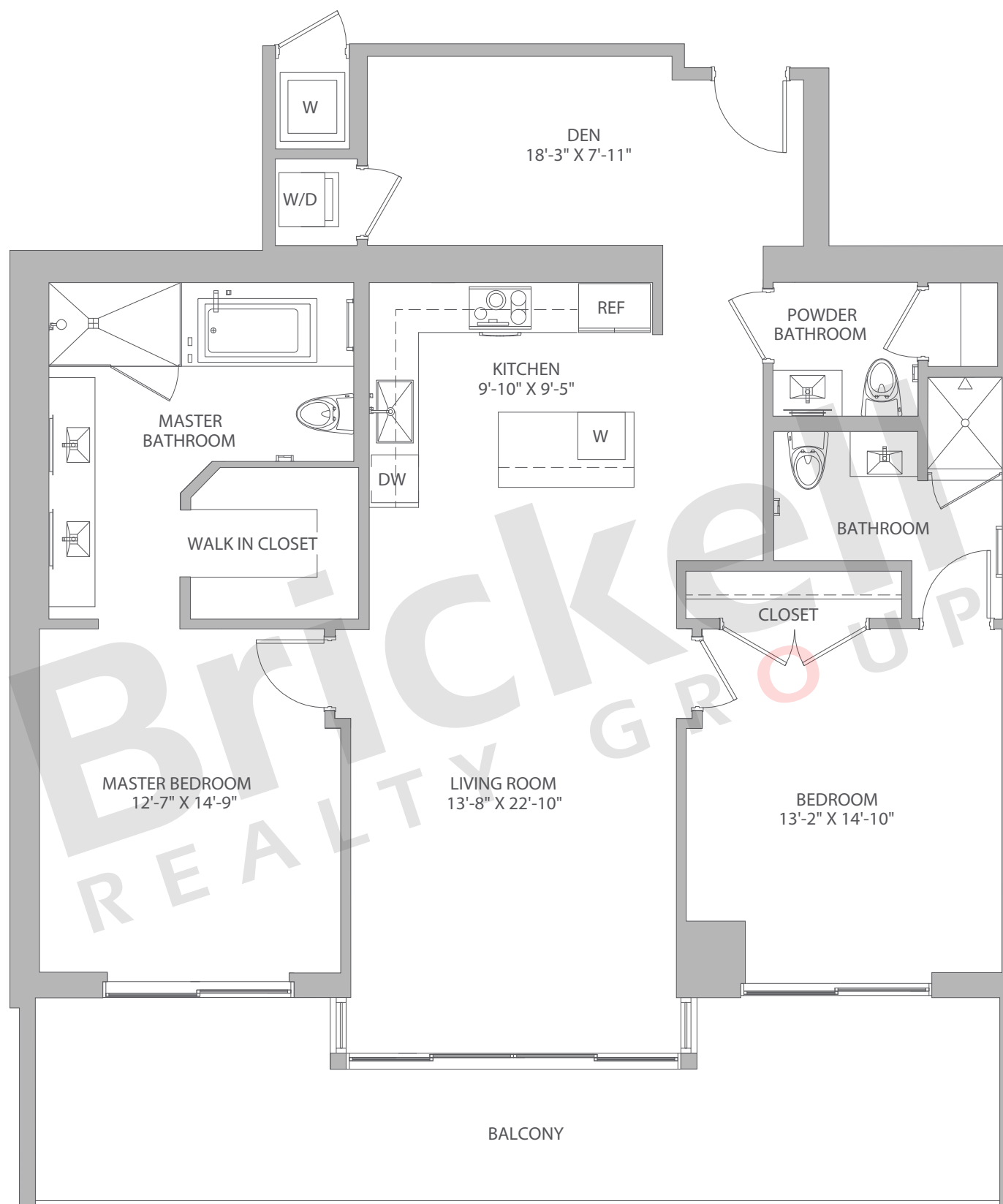
Brickell
REALTY GROUP

2071 NW 112th Avenue, Miami, FL 33172

www.brickell-realty.com/BCC-Rise.html

Oral representation cannot be relied upon as correctly stating representations of the developer. Pictures of homes and condos may not reflect the final products which may vary. Dimensions, specifications, improvements, rendering, plans, land uses, materials, amenities, prices, and availability are subject to change at the developer's discretion without notice.

Stated dimensions are approximate and measured to the exterior boundaries of the exterior walls and the centerline of interior demising walls which in fact vary from the dimensions that would be determined by using the description and definition of the "Unit" set forth in the Declaration (which generally only includes the interior airspace between the perimeter walls and excludes interior structural components).

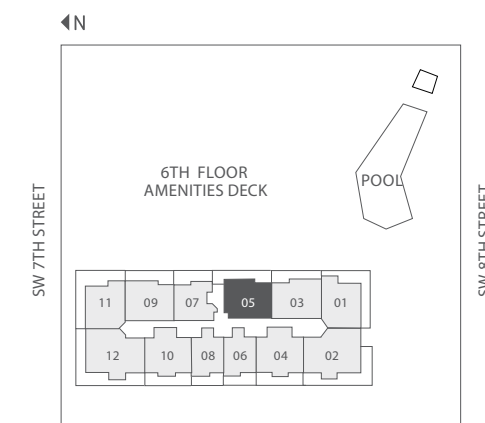
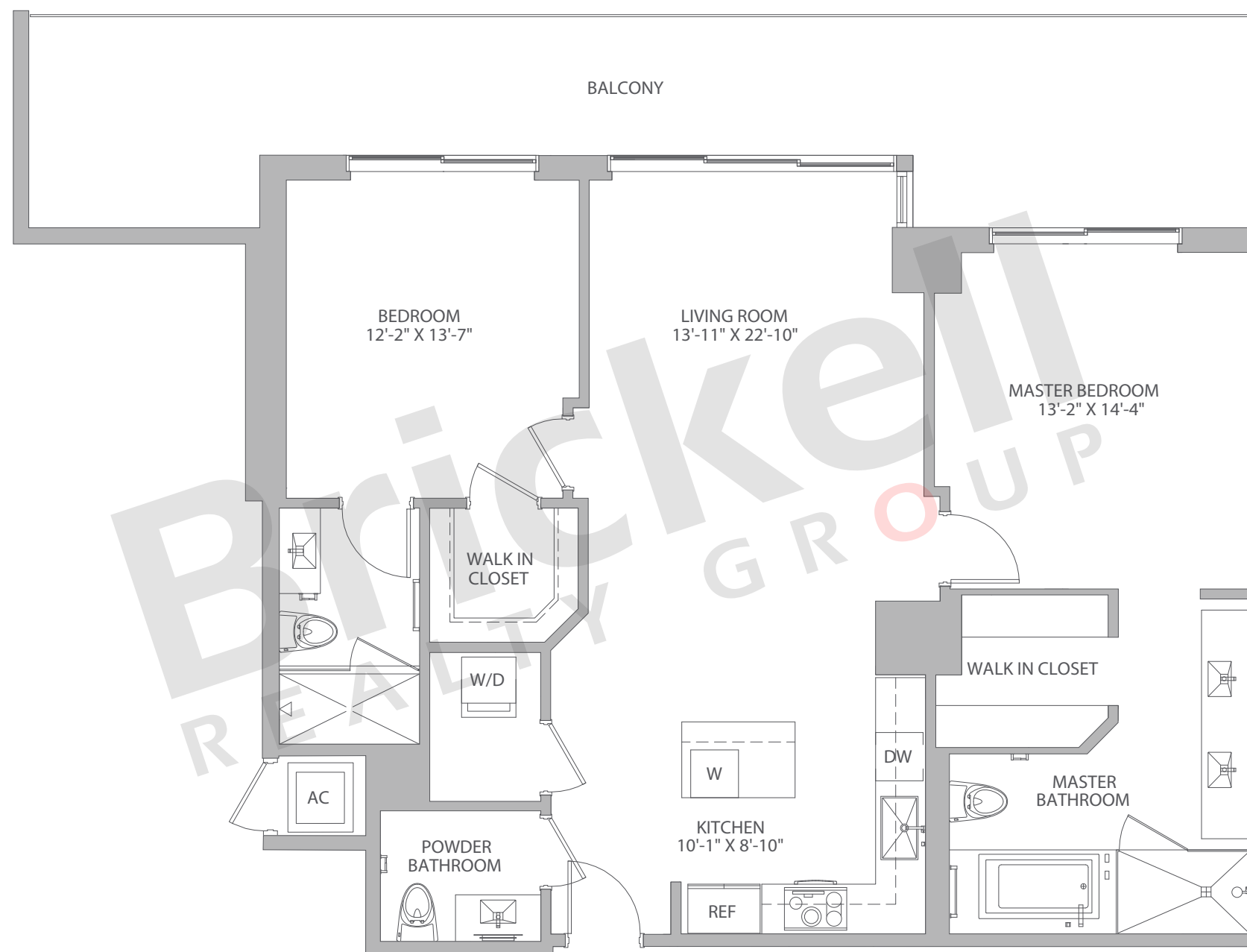


Line 05

Floors: 9-12, 14-41

2 Bedrooms · 2.5 Baths

	SQ FT	M ²
A/C - 9-12, 14-21	1,276	119
A/C - 22-33	1,275	118
A/C - 34-41	1,281	119
Balcony	149-349	14-32
Total	1,424-1,625	132-150



Brickell
REALTY GROUP

2071 NW 112th Avenue, Miami, FL 33172

www.brickell-realty.com/BCC-Rise.html

Oral representation cannot be relied upon as correctly stating representations of the developer. Pictures of homes and condos may not reflect the final products which may vary. Dimensions, specifications, improvements, rendering, plans, land uses, materials, amenities, prices, and availability are subject to change at the developer's discretion without notice.

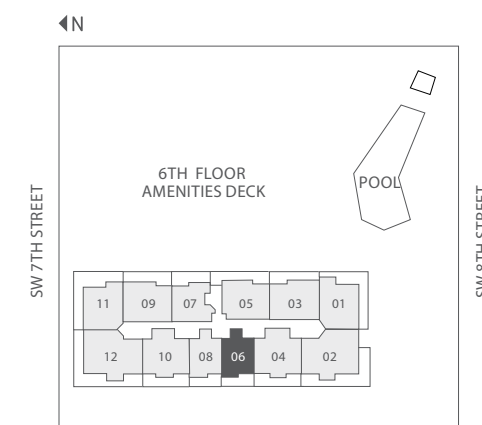
Stated dimensions are approximate and measured to the exterior boundaries of the exterior walls and the centerline of interior demising walls which in fact vary from the dimensions that would be determined by using the description and definition of the "Unit" set forth in the Declaration (which generally only includes the interior airspace between the perimeter walls and excludes interior structural components).

Line 06

Floors: 8-12, 14-41

1 Bedroom · 1.5 Baths

	SQ FT	M ²
A/C - 8-12, 14-21	983	91
A/C - 22-33	982	91
A/C - 34-41	986	92
Balcony	83-187	8-17
Total	1,065-1,170	98-108



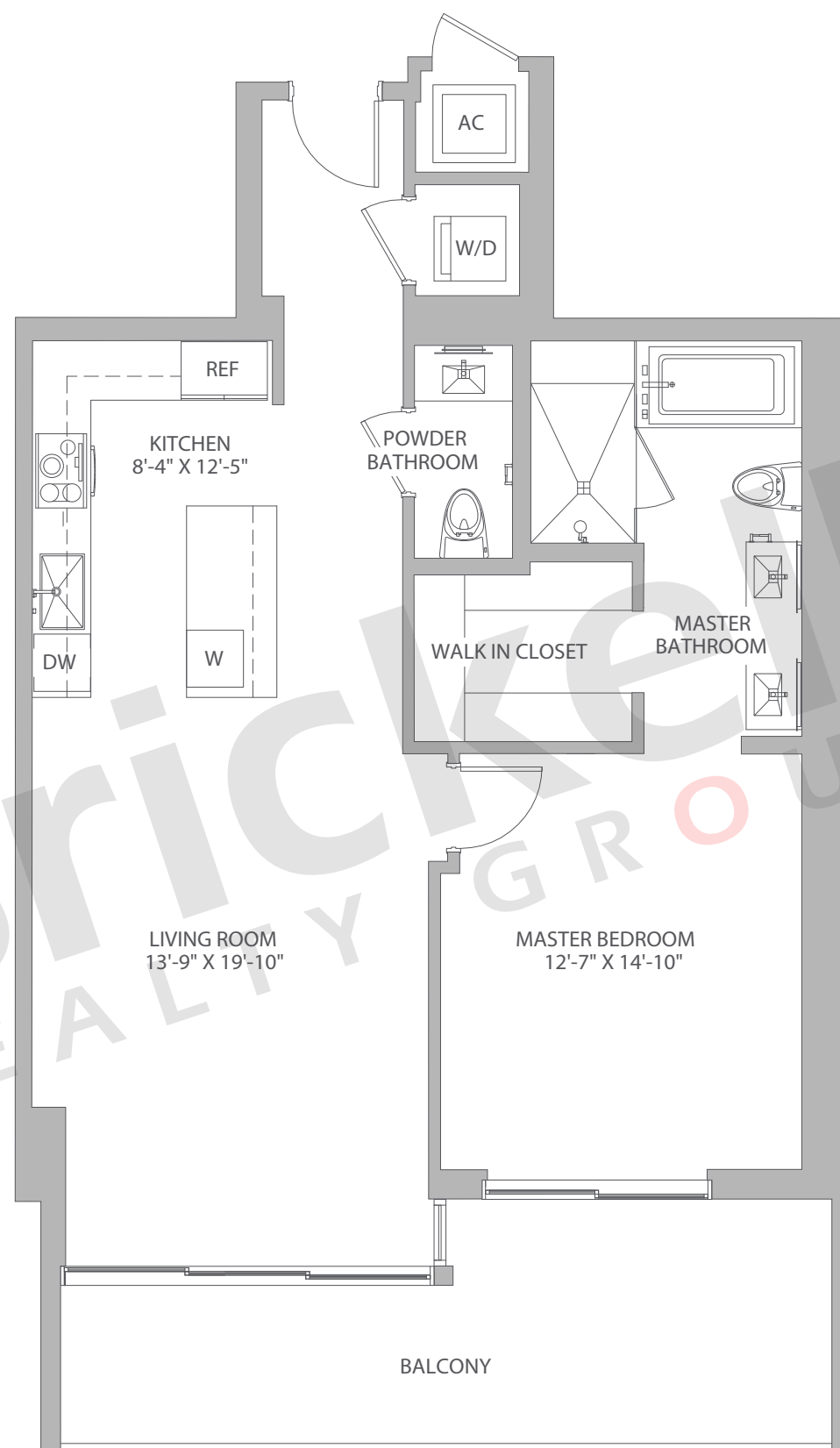
Brickell
REALTY GROUP

2071 NW 112th Avenue, Miami, FL 33172

www.brickell-realty.com/BCC-Rise.html

Oral representation cannot be relied upon as correctly stating representations of the developer. Pictures of homes and condos may not reflect the final products which may vary. Dimensions, specifications, improvements, rendering, plans, land uses, materials, amenities, prices, and availability are subject to change at the developer's discretion without notice.

Stated dimensions are approximate and measured to the exterior boundaries of the exterior walls and the centerline of interior demising walls which in fact vary from the dimensions that would be determined by using the description and definition of the "Unit" set forth in the Declaration (which generally only includes the interior airspace between the perimeter walls and excludes interior structural components).

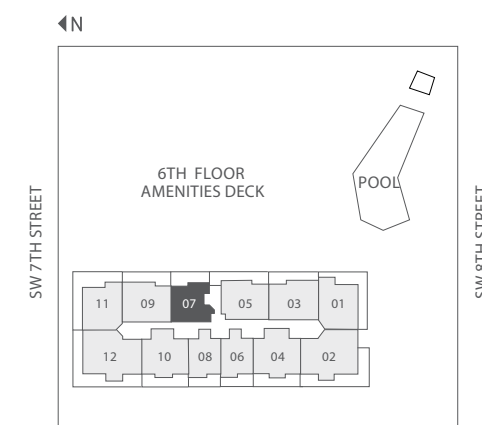
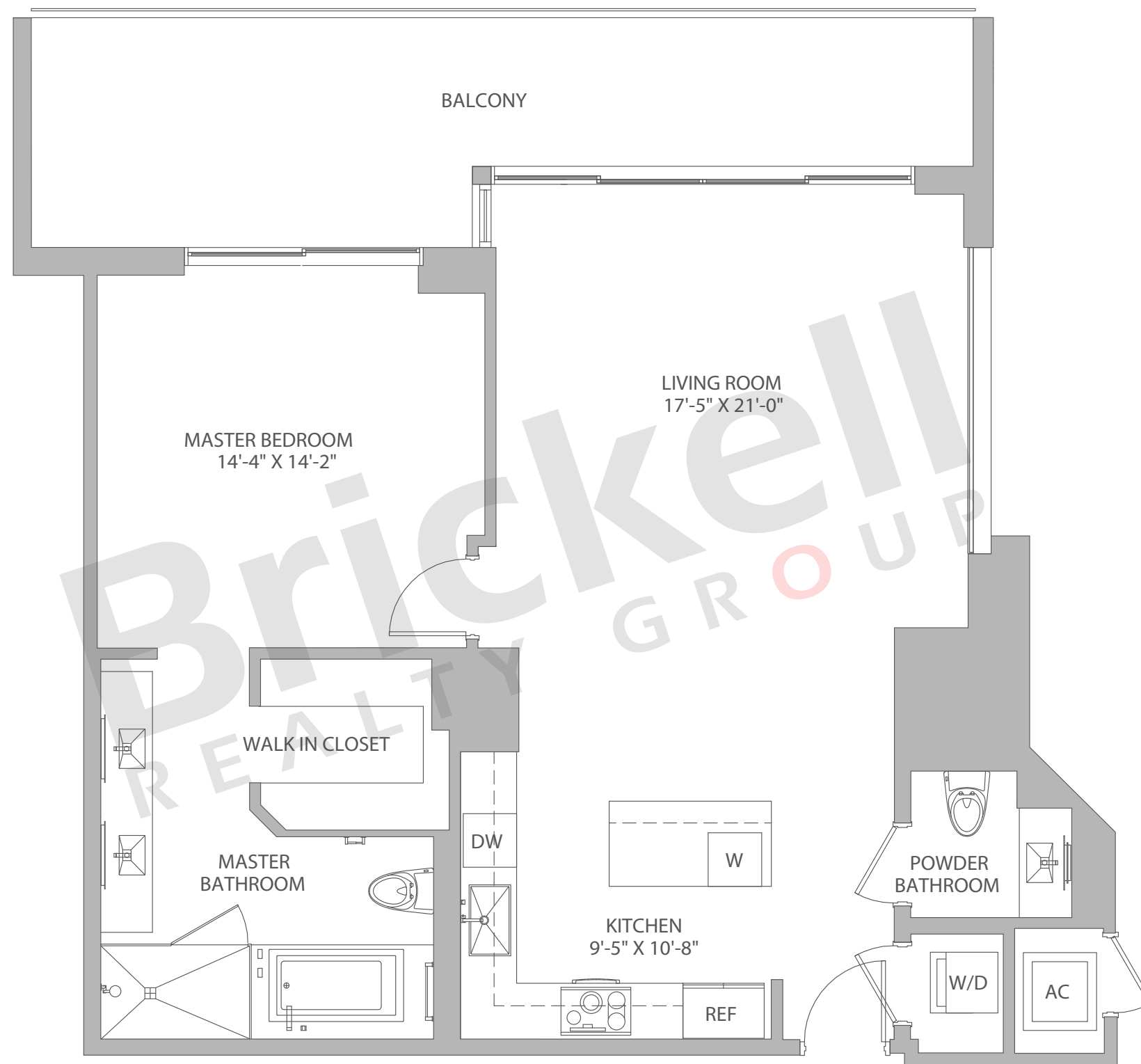


Line 07

Floors: 8-12, 14-41

1 Bedroom · 1.5 Baths

	SQ FT	M ²
A/C	1,070	99
Balcony	137-241	13-22
Total	1,207-1,311	112-121



Brickell
REALTY GROUP

2071 NW 112th Avenue, Miami, FL 33172

www.brickell-realty.com/BCC-Rise.html

Oral representation cannot be relied upon as correctly stating representations of the developer. Pictures of homes and condos may not reflect the final products which may vary. Dimensions, specifications, improvements, rendering, plans, land uses, materials, amenities, prices, and availability are subject to change at the developer's discretion without notice.

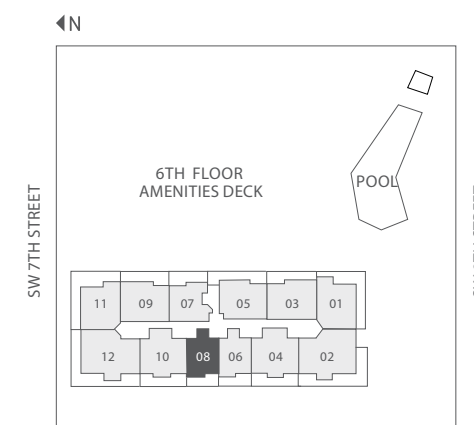
Stated dimensions are approximate and measured to the exterior boundaries of the exterior walls and the centerline of interior demising walls which in fact vary from the dimensions that would be determined by using the description and definition of the "Unit" set forth in the Declaration (which generally only includes the interior airspace between the perimeter walls and excludes interior structural components).

Line 08

Floors: 8-12, 14-41

1 Bedroom · 1.5 Baths

	SQ FT	M ²
A/C - 8-12, 14-33	986	92
A/C - 34-41	987	92
Balcony	104-196	10-18
Total	1,090-1,187	101-110



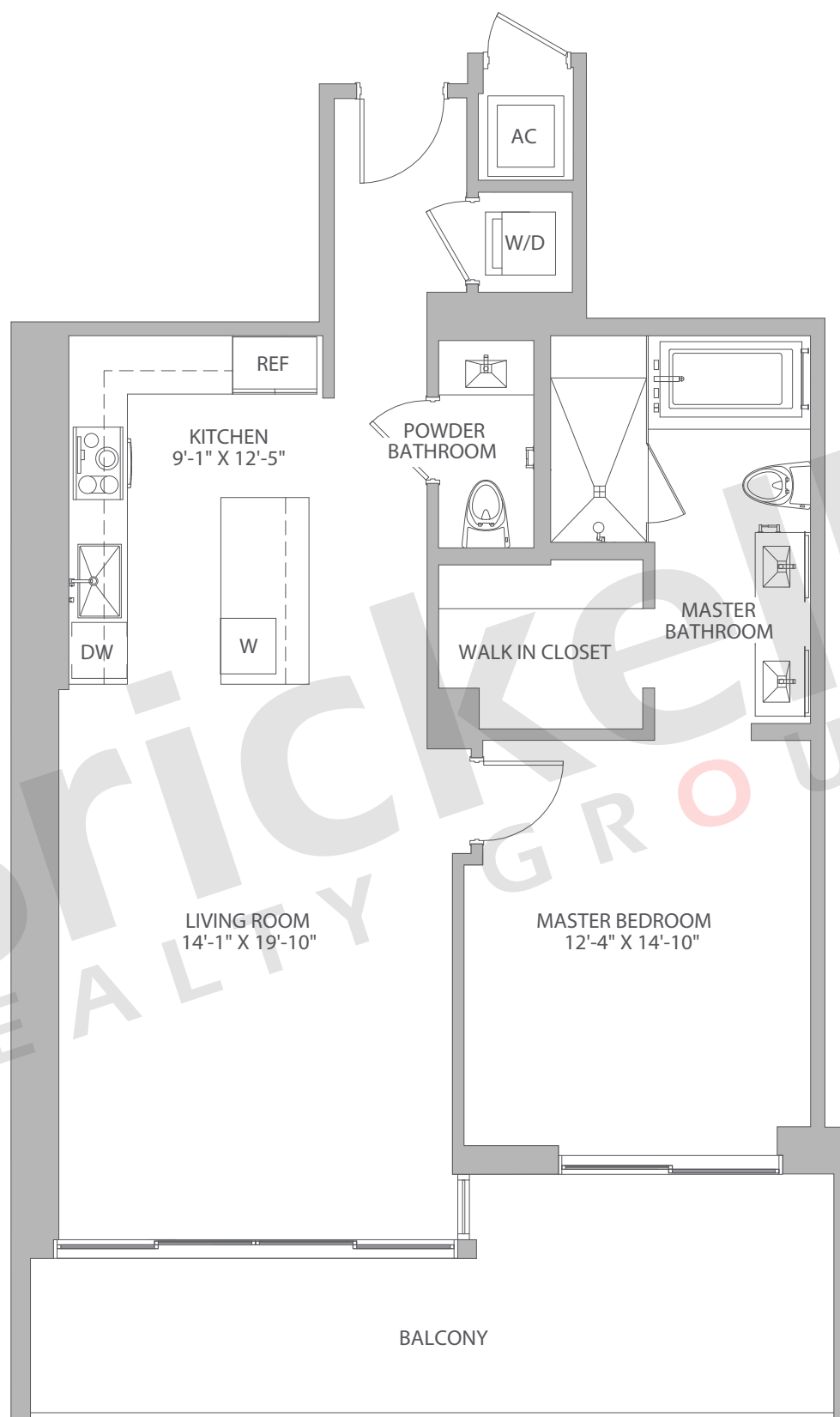
Brickell
REALTY GROUP

2071 NW 112th Avenue, Miami, FL 33172

www.brickell-realty.com/BCC-Rise.html

Oral representation cannot be relied upon as correctly stating representations of the developer. Pictures of homes and condos may not reflect the final products which may vary. Dimensions, specifications, improvements, rendering, plans, land uses, materials, amenities, prices, and availability are subject to change at the developer's discretion without notice.

Stated dimensions are approximate and measured to the exterior boundaries of the exterior walls and the centerline of interior demising walls which in fact vary from the dimensions that would be determined by using the description and definition of the "Unit" set forth in the Declaration (which generally only includes the interior airspace between the perimeter walls and excludes interior structural components).

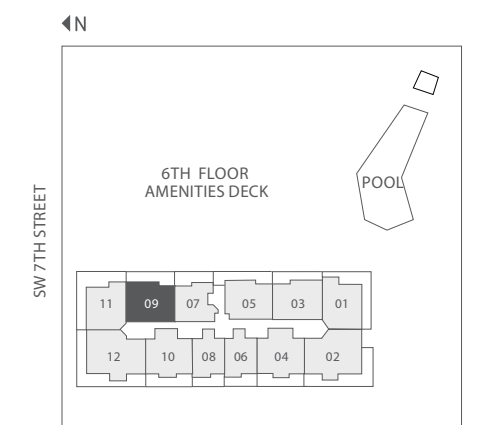
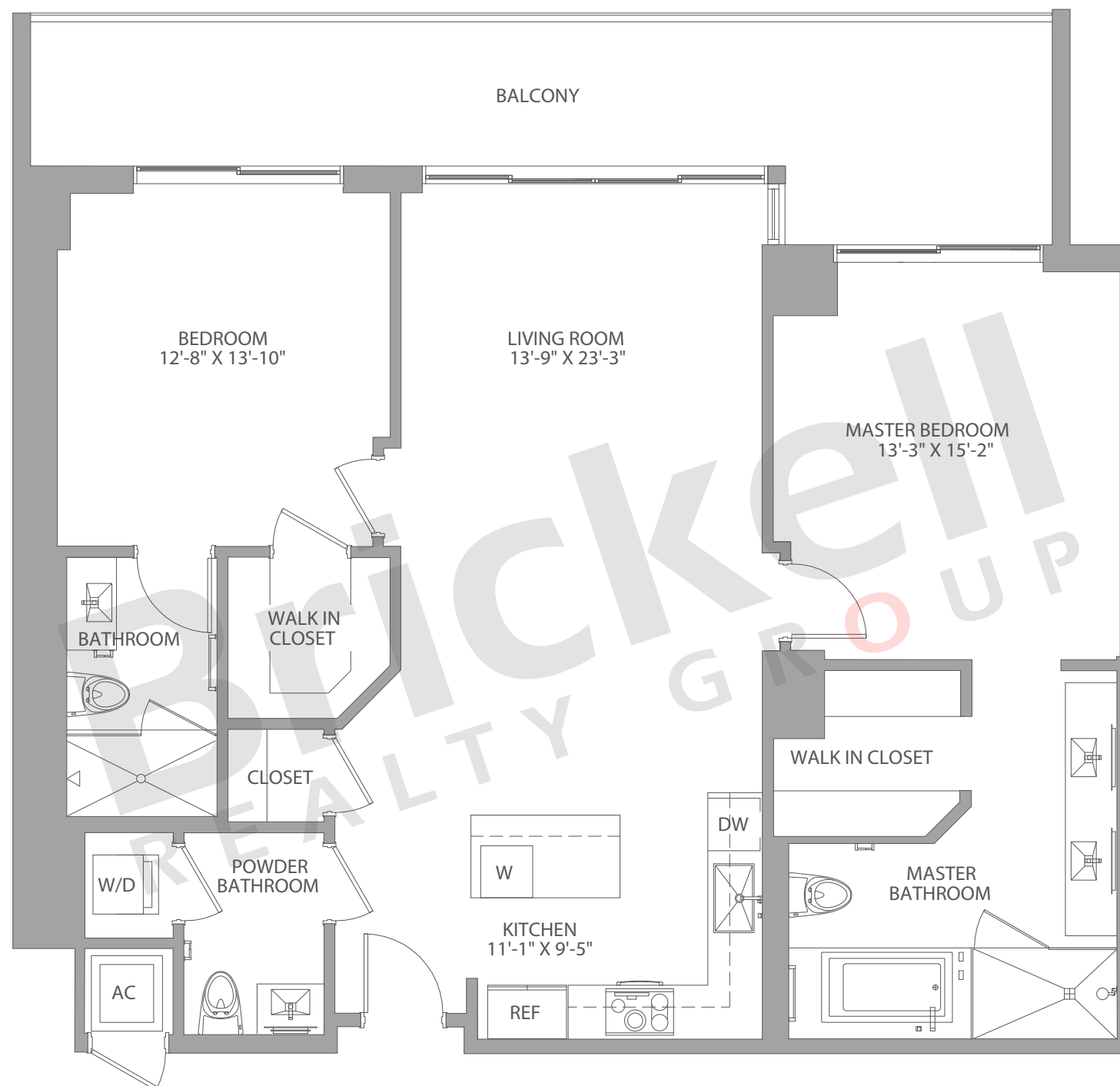


Line 09

Floors: 8-12, 14-41

2 Bedrooms · 2.5 Baths

	SQ FT	M ²
A/C - 8	1,347	125
A/C - 8-12, 14-21	1,344	125
A/C - 22-33	1,356	126
A/C - 34-41	1,362	127
Balcony	84-245	8-23
Total	1,440-1,589	133-147



Brickell
REALTY GROUP

2071 NW 112th Avenue, Miami, FL 33172

www.brickell-realty.com/BCC-Rise.html

Oral representation cannot be relied upon as correctly stating representations of the developer. Pictures of homes and condos may not reflect the final products which may vary. Dimensions, specifications, improvements, rendering, plans, land uses, materials, amenities, prices, and availability are subject to change at the developer's discretion without notice.

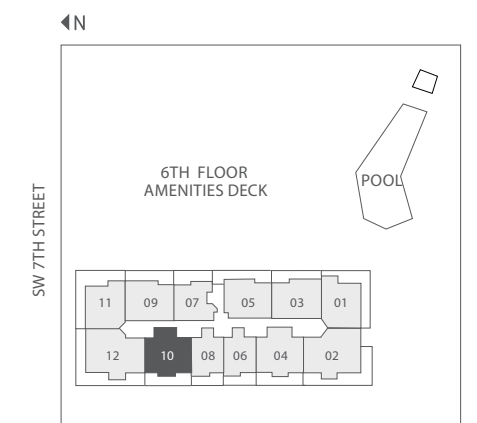
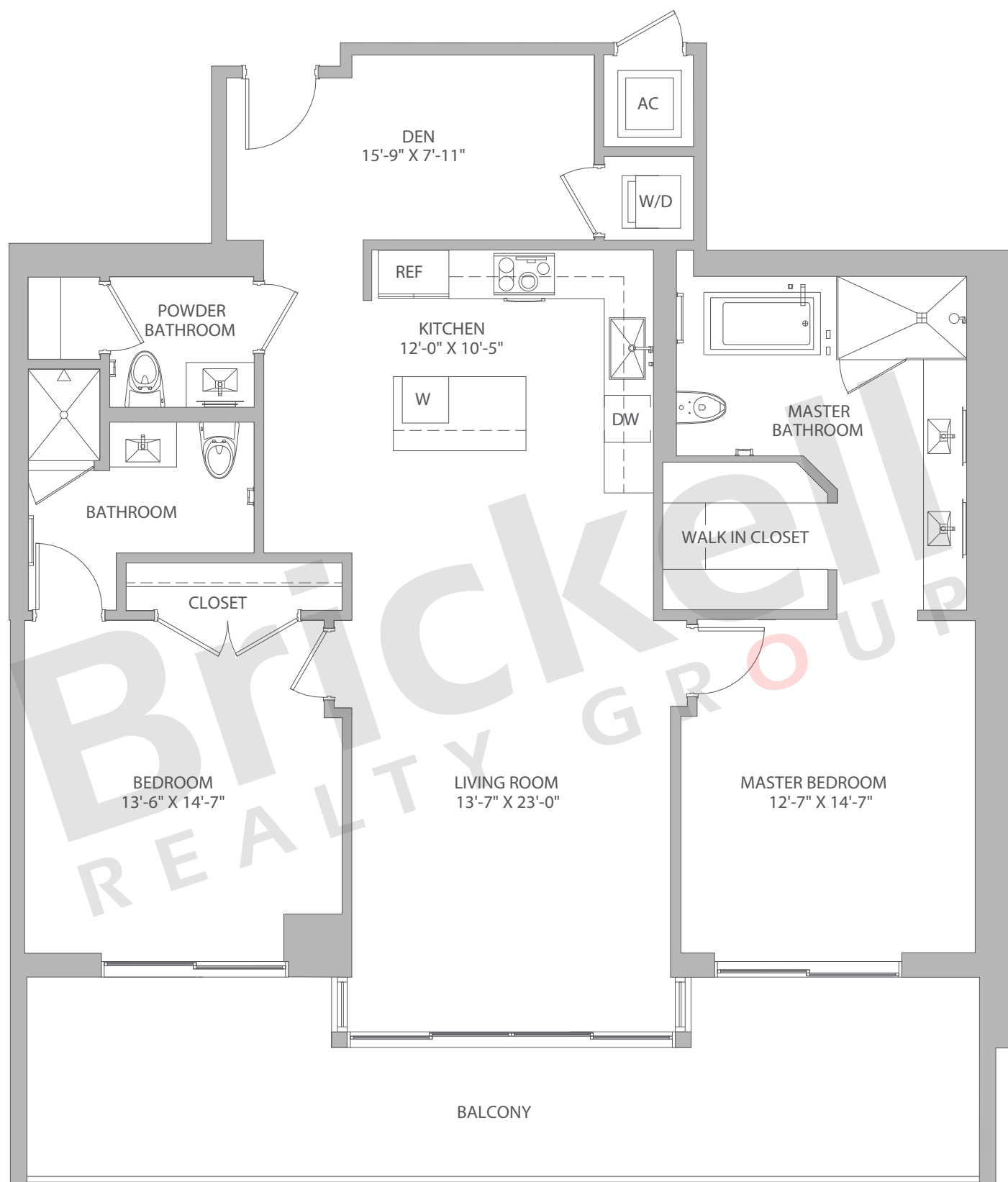
Stated dimensions are approximate and measured to the exterior boundaries of the exterior walls and the centerline of interior demising walls which in fact vary from the dimensions that would be determined by using the description and definition of the "Unit" set forth in the Declaration (which generally only includes the interior airspace between the perimeter walls and excludes interior structural components).

Line 10

Floors: 8-12, 14-41

2 Bedrooms · 2 Baths · Den

	SQ FT	M ²
A/C - 8-12, 14-33	1,504	140
A/C - 34-41	1,515	141
Balcony	131-300	12-28
Total	1,635-1,804	151-167



Brickell
REALTY GROUP

2071 NW 112th Avenue, Miami, FL 33172

www.brickell-realty.com/BCC-Rise.html

Oral representation cannot be relied upon as correctly stating representations of the developer. Pictures of homes and condos may not reflect the final products which may vary. Dimensions, specifications, improvements, rendering, plans, land uses, materials, amenities, prices, and availability are subject to change at the developer's discretion without notice.

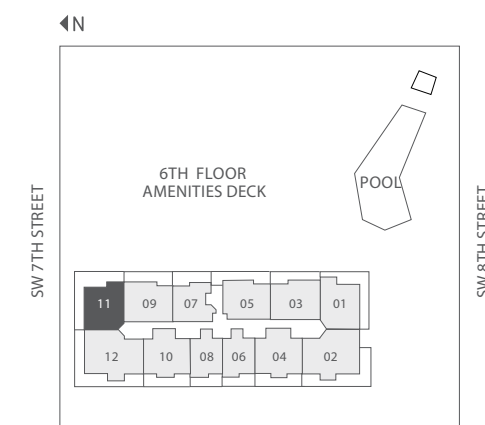
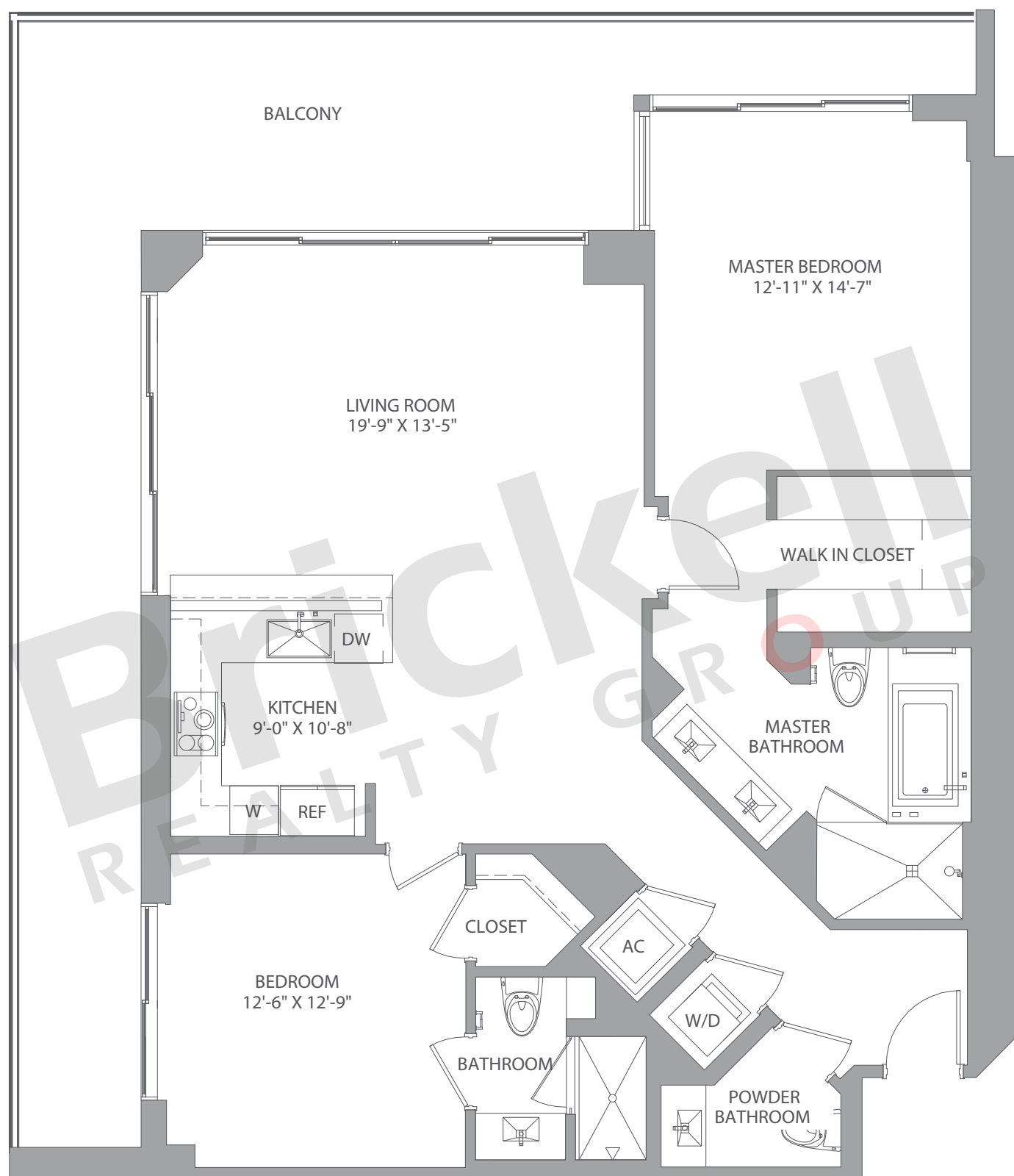
Stated dimensions are approximate and measured to the exterior boundaries of the exterior walls and the centerline of interior demising walls which in fact vary from the dimensions that would be determined by using the description and definition of the "Unit" set forth in the Declaration (which generally only includes the interior airspace between the perimeter walls and excludes interior structural components).

Line 11

Floors: 7-12, 14-36

2 Bedrooms · 2.5 Baths

	SQ FT	M ²
A/C - 7-12, 14-21	1,391	129
A/C - 22-33	1,383	128
A/C - 34-36	1,377	128
Balcony	292-441	27-41
Total	1,675-1,831	155-170



Brickell
REALTY GROUP

2071 NW 112th Avenue, Miami, FL 33172

www.brickell-realty.com/BCC-Rise.html

Oral representation cannot be relied upon as correctly stating representations of the developer. Pictures of homes and condos may not reflect the final products which may vary. Dimensions, specifications, improvements, rendering, plans, land uses, materials, amenities, prices, and availability are subject to change at the developer's discretion without notice.

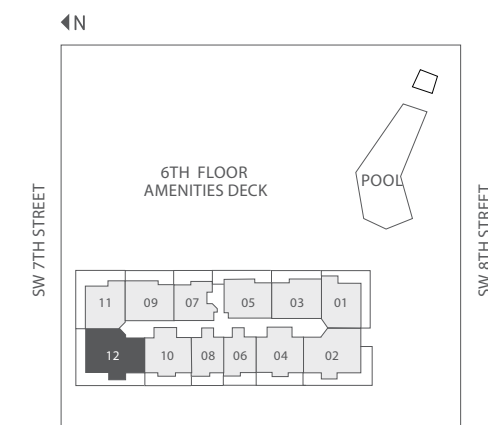
Stated dimensions are approximate and measured to the exterior boundaries of the exterior walls and the centerline of interior demising walls which in fact vary from the dimensions that would be determined by using the description and definition of the "Unit" set forth in the Declaration (which generally only includes the interior airspace between the perimeter walls and excludes interior structural components).

Line 12

Floors: 7-12, 14-36

3 Bedrooms · 3.5 Baths

	SQ FT	M ²
A/C - 7-12, 14-21	1,835	170
A/C - 22-36	1,839	171
Balcony	338-568	31-53
Total	2,178-2,407	202-223



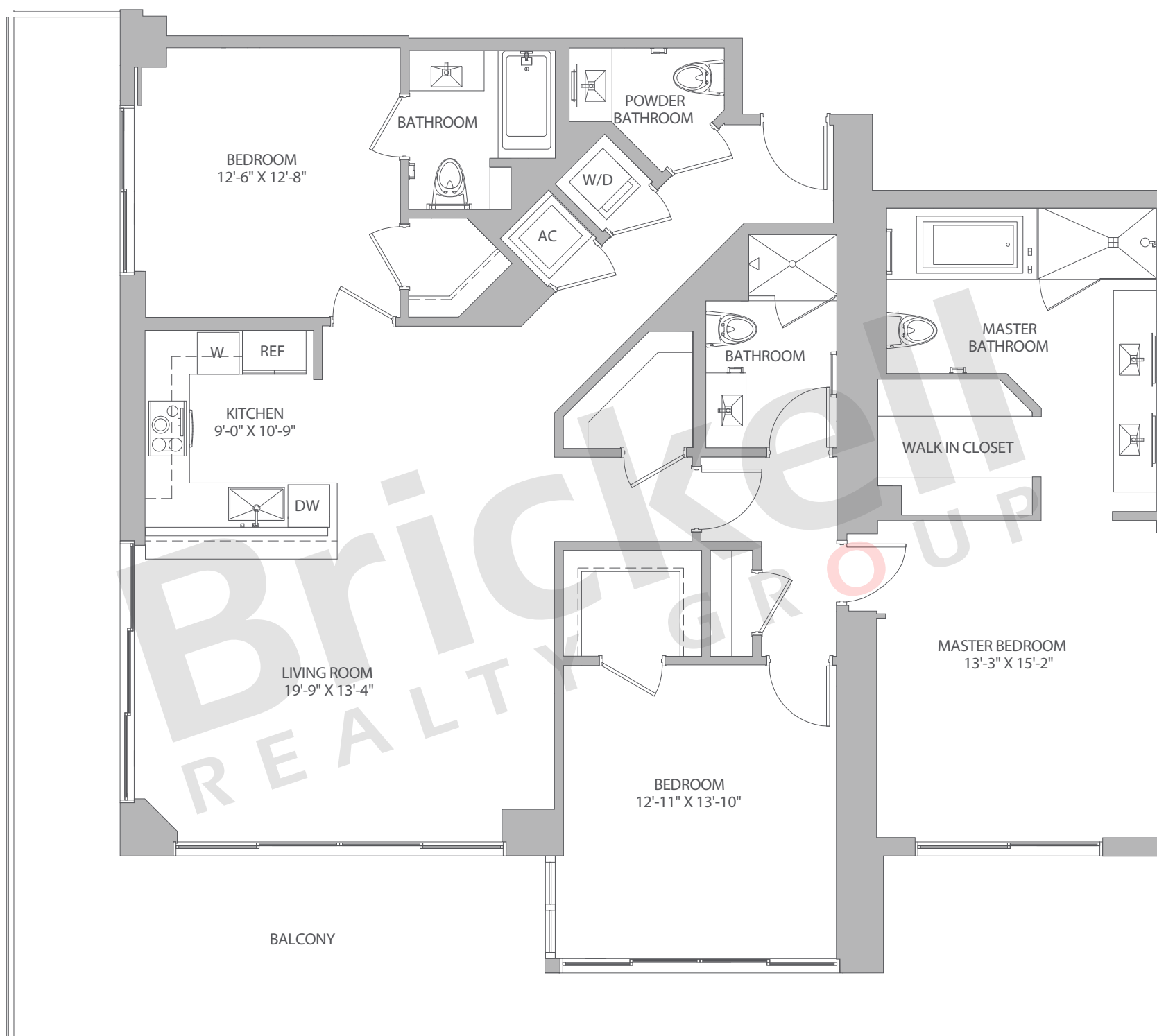
Brickell
REALTY GROUP

2071 NW 112th Avenue, Miami, FL 33172

www.brickell-realty.com/BCC-Rise.html

Oral representation cannot be relied upon as correctly stating representations of the developer. Pictures of homes and condos may not reflect the final products which may vary. Dimensions, specifications, improvements, rendering, plans, land uses, materials, amenities, prices, and availability are subject to change at the developer's discretion without notice.

Stated dimensions are approximate and measured to the exterior boundaries of the exterior walls and the centerline of interior demising walls which in fact vary from the dimensions that would be determined by using the description and definition of the "Unit" set forth in the Declaration (which generally only includes the interior airspace between the perimeter walls and excludes interior structural components).

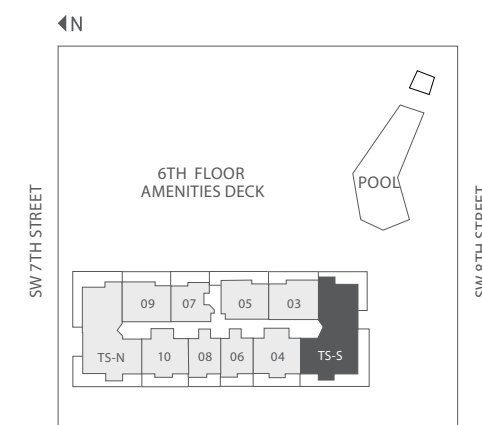
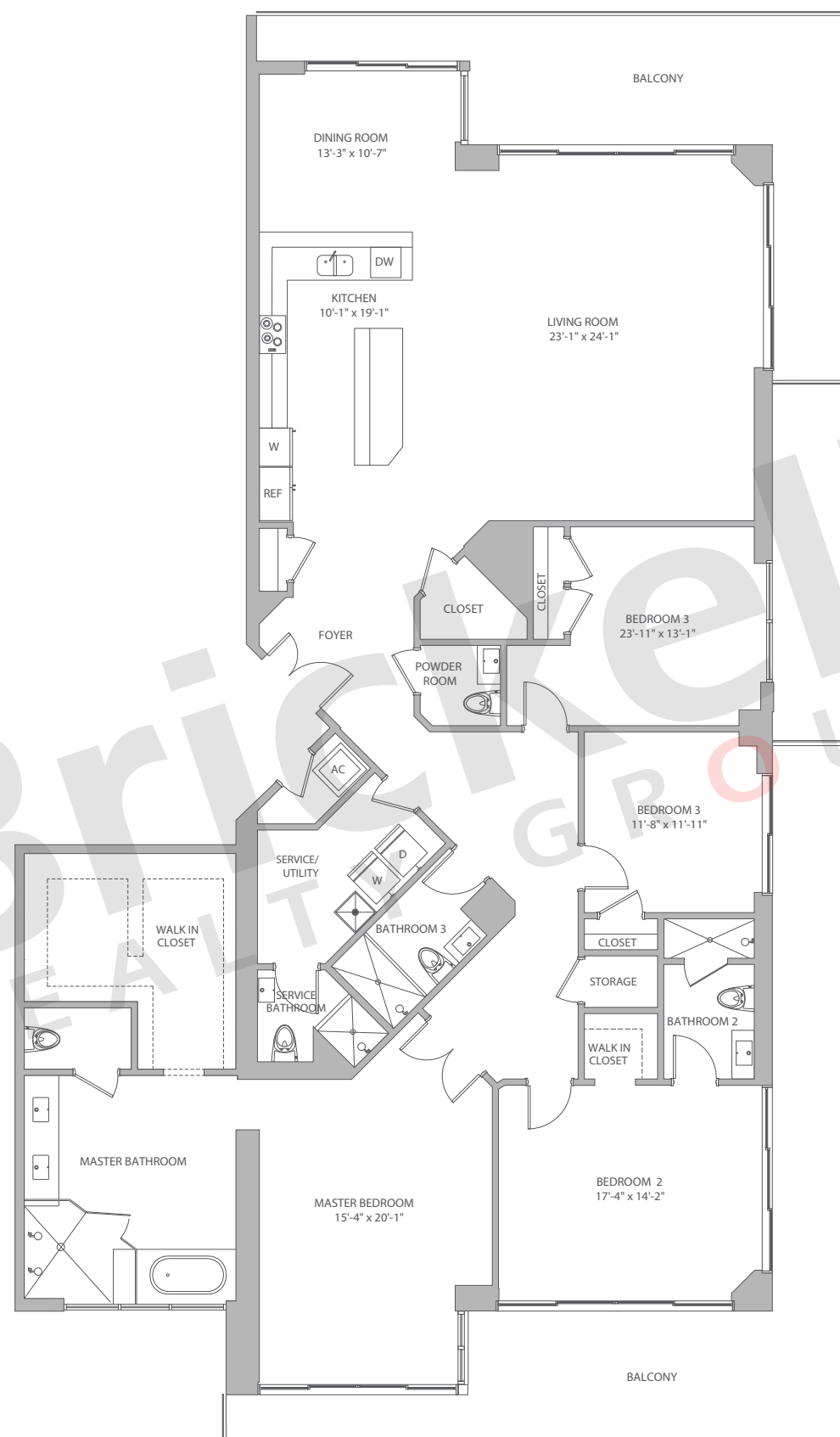


Tower Suite South

Floors: 37-41

4 Bedrooms · 4.5 Baths · Utility
Service Quarters

	SQ FT	M ²
A/C	3,244	301
Balcony	738-777	69-72
Total	3,982-4,021	370-373



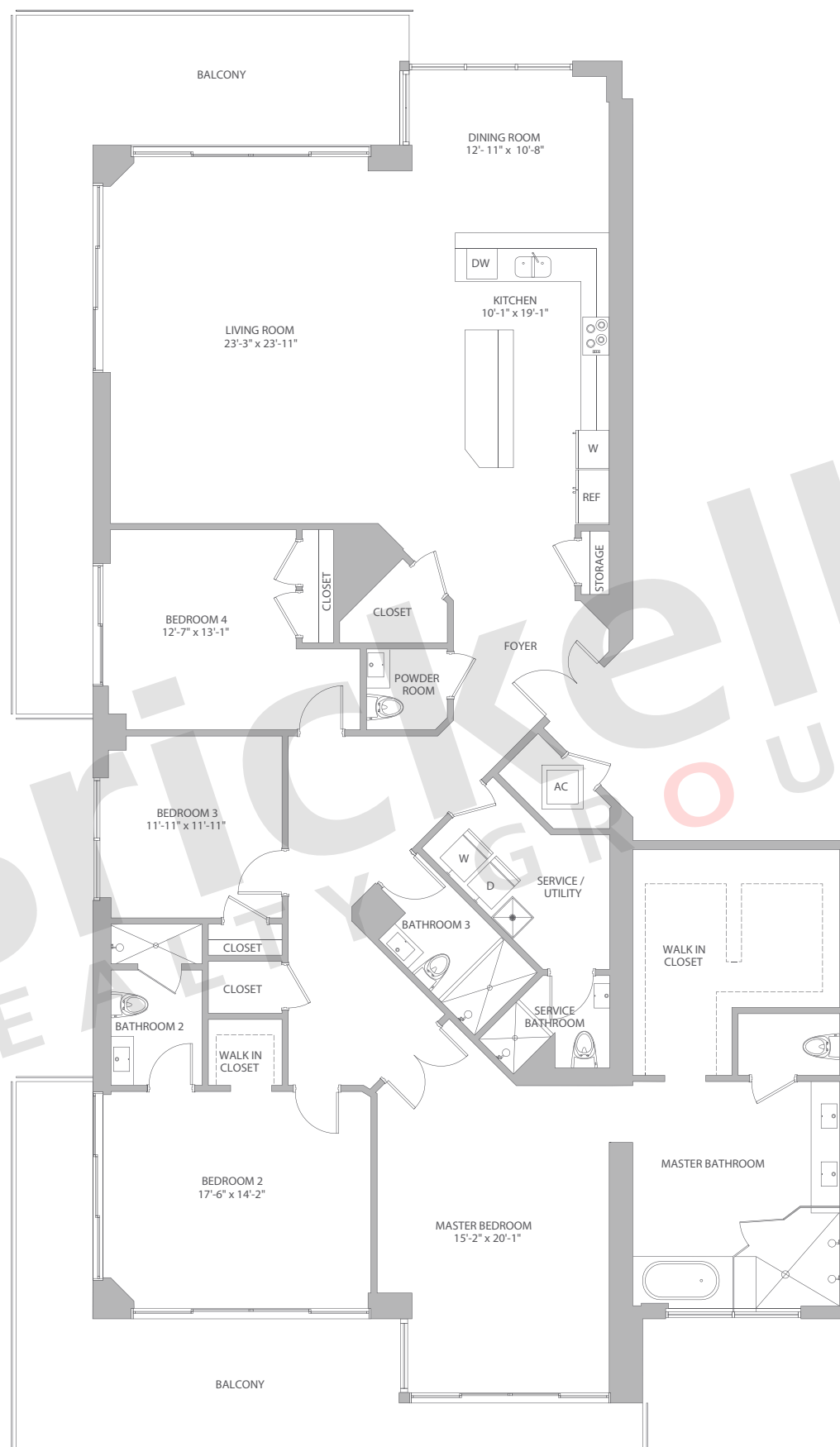
Brickell
REALTY GROUP

2071 NW 112th Avenue, Miami, FL 33172

www.brickell-realty.com/BCC-Rise.html

Oral representation cannot be relied upon as correctly stating representations of the developer. Pictures of homes and condos may not reflect the final products which may vary. Dimensions, specifications, improvements, rendering, plans, land uses, materials, amenities, prices, and availability are subject to change at the developer's discretion without notice.

Stated dimensions are approximate and measured to the exterior boundaries of the exterior walls and the centerline of interior demising walls which in fact vary from the dimensions that would be determined by using the description and definition of the "Unit" set forth in the Declaration (which generally only includes the interior airspace between the perimeter walls and excludes interior structural components).

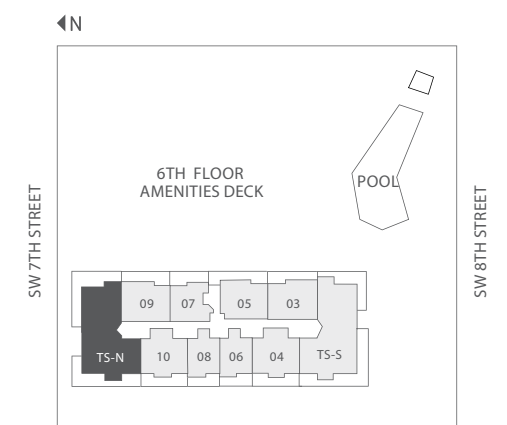


Tower Suite North

Floors: 37-41

4 Bedrooms · 4.5 Baths · Utility
Service Quarters

	SQ FT	M ²
A/C	3,237	301
Balcony	738	69
Total	3,975	370



Brickell
REALTY GROUP

2071 NW 112th Avenue, Miami, FL 33172

www.brickell-realty.com/BCC-Rise.html

Oral representation cannot be relied upon as correctly stating representations of the developer. Pictures of homes and condos may not reflect the final products which may vary. Dimensions, specifications, improvements, rendering, plans, land uses, materials, amenities, prices, and availability are subject to change at the developer's discretion without notice.

Stated dimensions are approximate and measured to the exterior boundaries of the exterior walls and the centerline of interior demising walls which in fact vary from the dimensions that would be determined by using the description and definition of the "Unit" set forth in the Declaration (which generally only includes the interior airspace between the perimeter walls and excludes interior structural components).