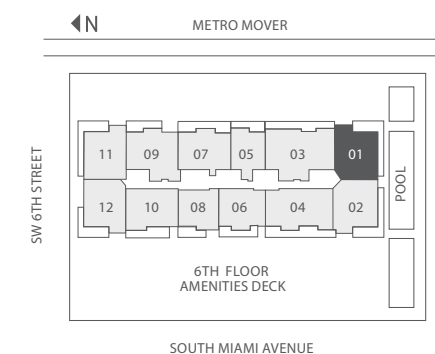
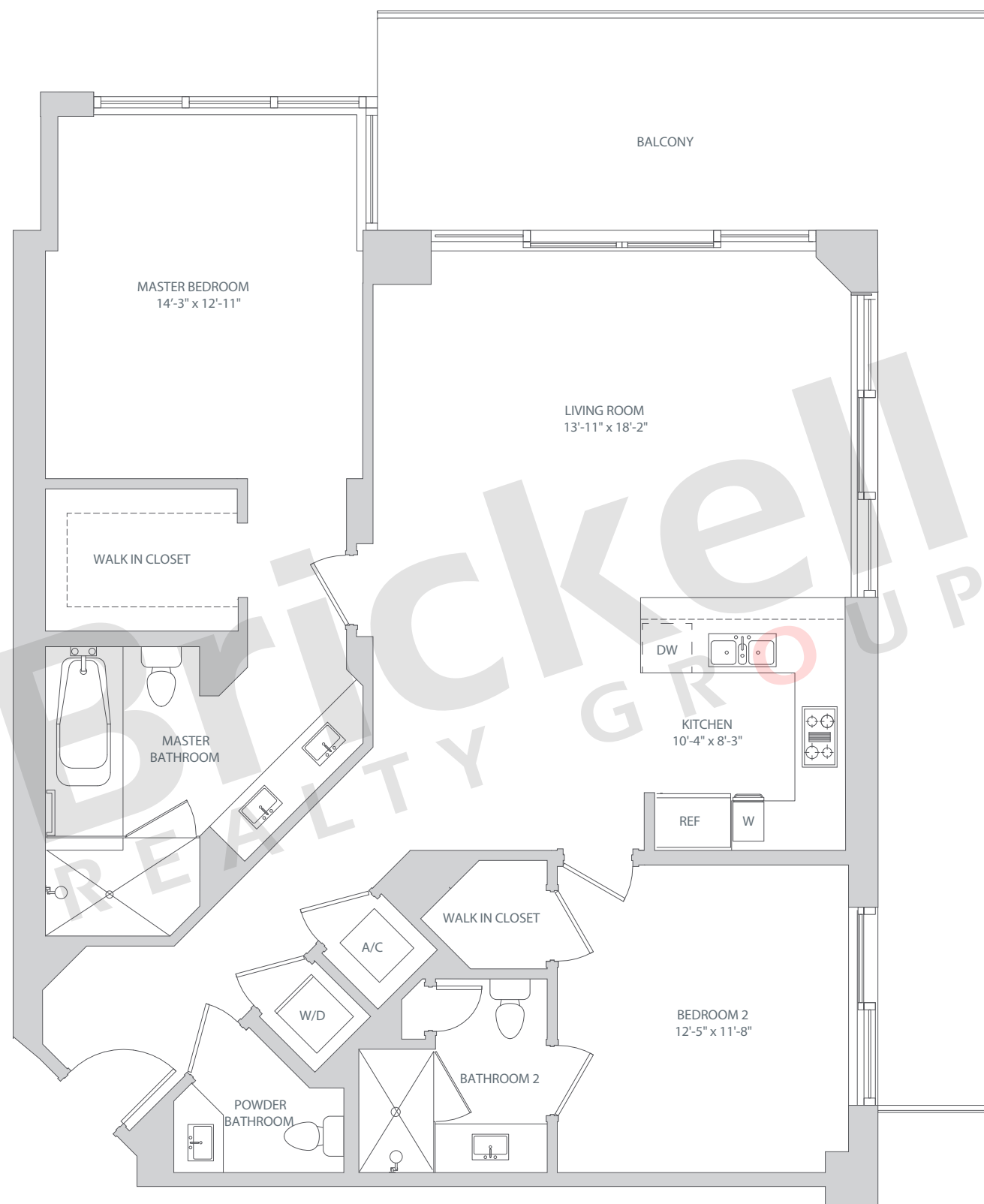


Line 01

Floors: 12, 14-36

2 Bedrooms · 2.5 Baths

	SQ FT	M ²
A/C - 12, 14-20	1,400	130
A/C - 21-32	1,391	129
A/C - 33-36	1,385	128
Balcony	280-411	26-38
Total	1,665-1,802	154-167



Brickell
REALTY GROUP

2071 NW 112th Avenue, Miami, FL 33172

www.brickell-realty.com/BCC-Reach.html

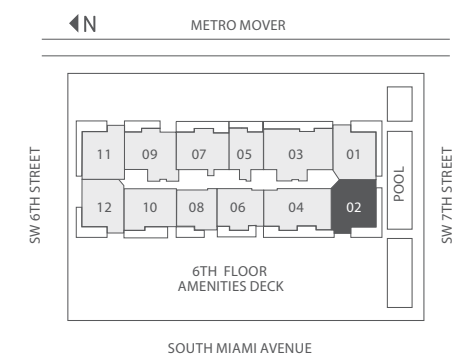
Oral representation cannot be relied upon as correctly stating representations of the developer. Pictures of homes and condos may not reflect the final products which may vary. Dimensions, specifications, improvements, rendering, plans, land uses, materials, amenities, prices, and availability are subject to change at the developer's discretion without notice.

Stated dimensions are approximate and measured to the exterior boundaries of the exterior walls and the centerline of interior demising walls which in fact vary from the dimensions that would be determined by using the description and definition of the "Unit" set forth in the Declaration (which generally only includes the interior airspace between the perimeter walls and excludes interior structural components).

Line 02
Floors: 12, 14-36

2 Bedrooms · 2.5 Baths

	SQ FT	M ²
A/C - 12, 14-20	1,401	130
A/C - 21-32	1,391	129
A/C - 33-36	1,386	128
Balcony	280-411	26-38
Total	1,665-1,802	154-167



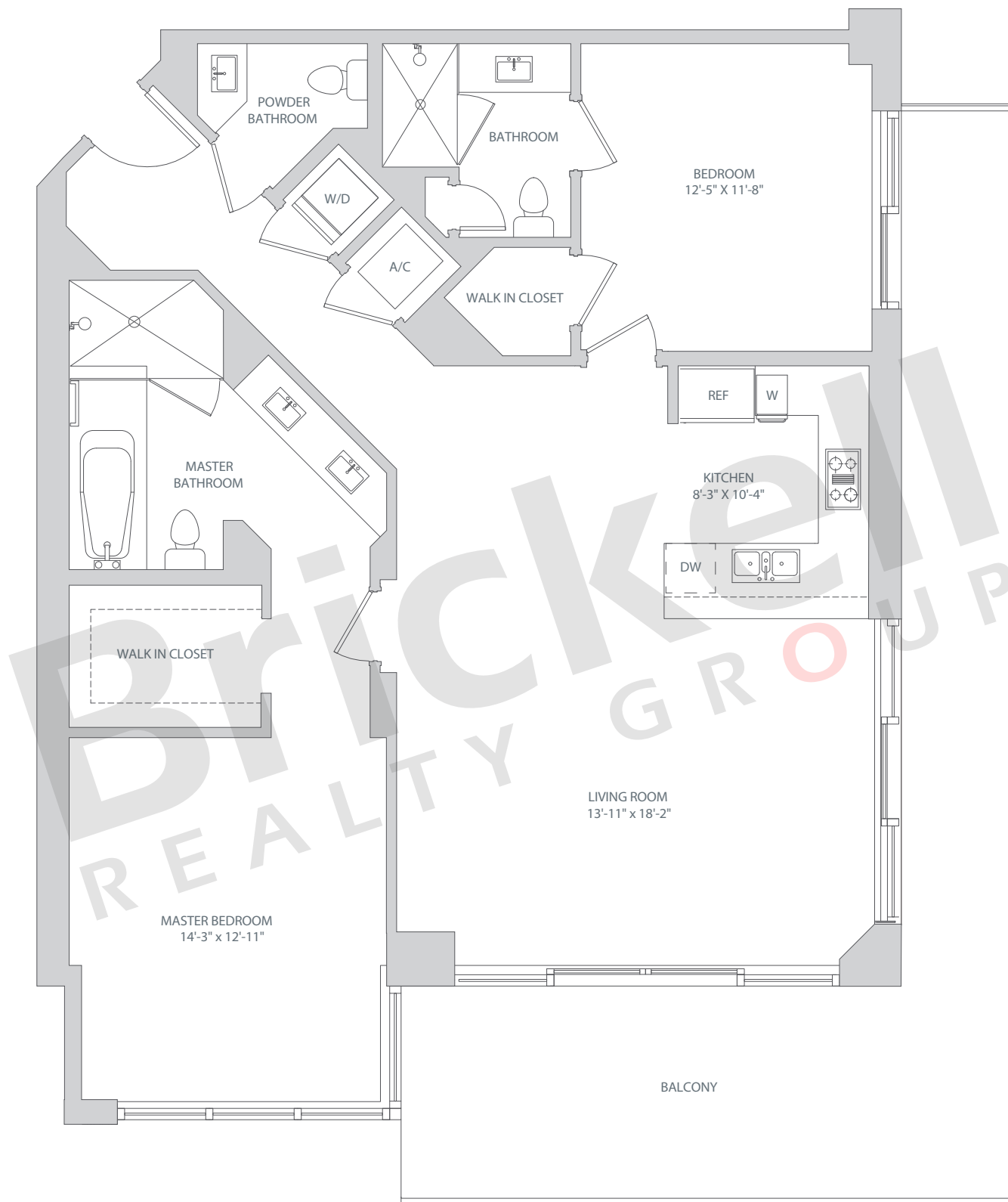
Brickell

REALTY GROUP

2071 NW 112th Avenue, Miami, FL 33172
www.brickell-realty.com/BCC-Reach.html

Oral representation cannot be relied upon as correctly stating representations of the developer. Pictures of homes and condos may not reflect the final products which may vary. Dimensions, specifications, improvements, rendering, plans, land uses, materials, amenities, prices, and availability are subject to change at the developer's discretion without notice.

Stated dimensions are approximate and measured to the exterior boundaries of the exterior walls and the centerline of interior demising walls which in fact vary from the dimensions that would be determined by using the description and definition of the "Unit" set forth in the Declaration (which generally only includes the interior airspace between the perimeter walls and excludes interior structural components).

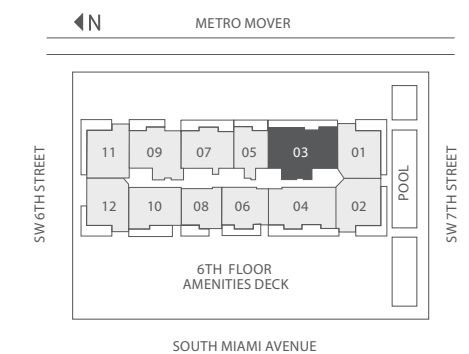


Line 03

Floors: 10, 12, 14-41

3 Bedrooms · 3.5 Baths · Den

	SQ FT	M ²
A/C - 10, 12, 14-20	2,057	191
A/C - 21-32	2,066	192
A/C - 33-41	2,083	194
Balcony	182-342	17-32
Total	2,248-2,401	209-223



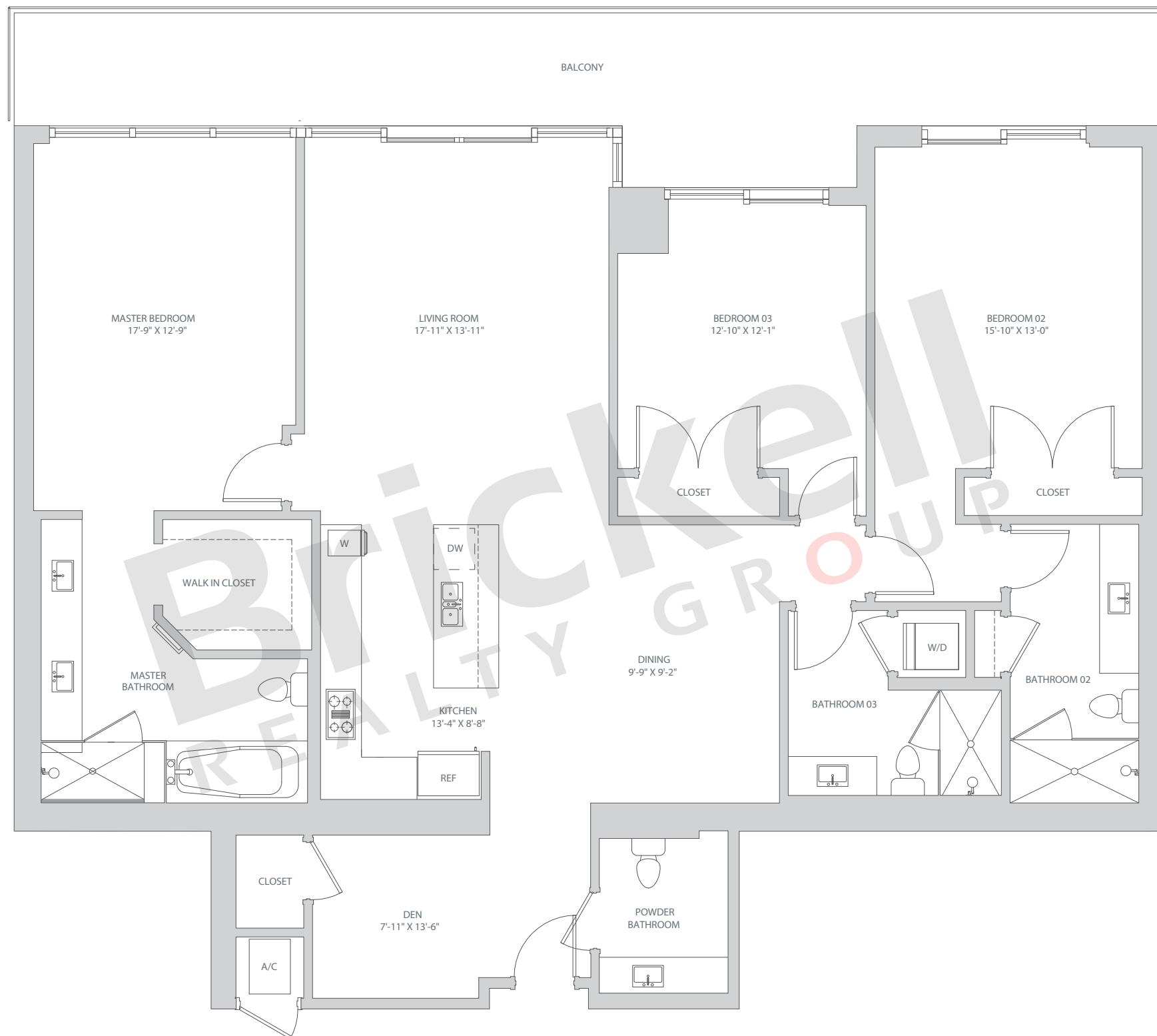
Brickell
REALTY GROUP

2071 NW 112th Avenue, Miami, FL 33172

www.brickell-realty.com/BCC-Reach.html

Oral representation cannot be relied upon as correctly stating representations of the developer. Pictures of homes and condos may not reflect the final products which may vary. Dimensions, specifications, improvements, rendering, plans, land uses, materials, amenities, prices, and availability are subject to change at the developer's discretion without notice.

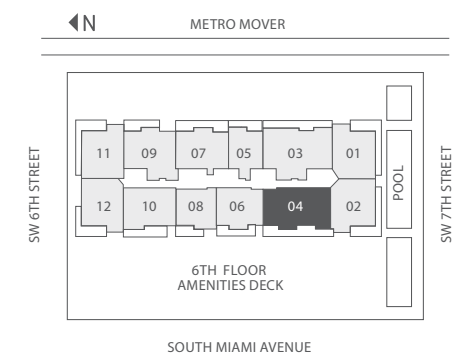
Stated dimensions are approximate and measured to the exterior boundaries of the exterior walls and the centerline of interior demising walls which in fact vary from the dimensions that would be determined by using the description and definition of the "Unit" set forth in the Declaration (which generally only includes the interior airspace between the perimeter walls and excludes interior structural components).



Line 04
Floors: 10, 12, 14-41

3 Bedrooms · 3.5 Baths · Den

	SQ FT	M ²
A/C - 10, 12, 14-20	1,782	166
A/C - 21-32	1,793	167
A/C - 33-41	1,799	167
Balcony	207-387	19-36
Total	2,000-2,180	185-202



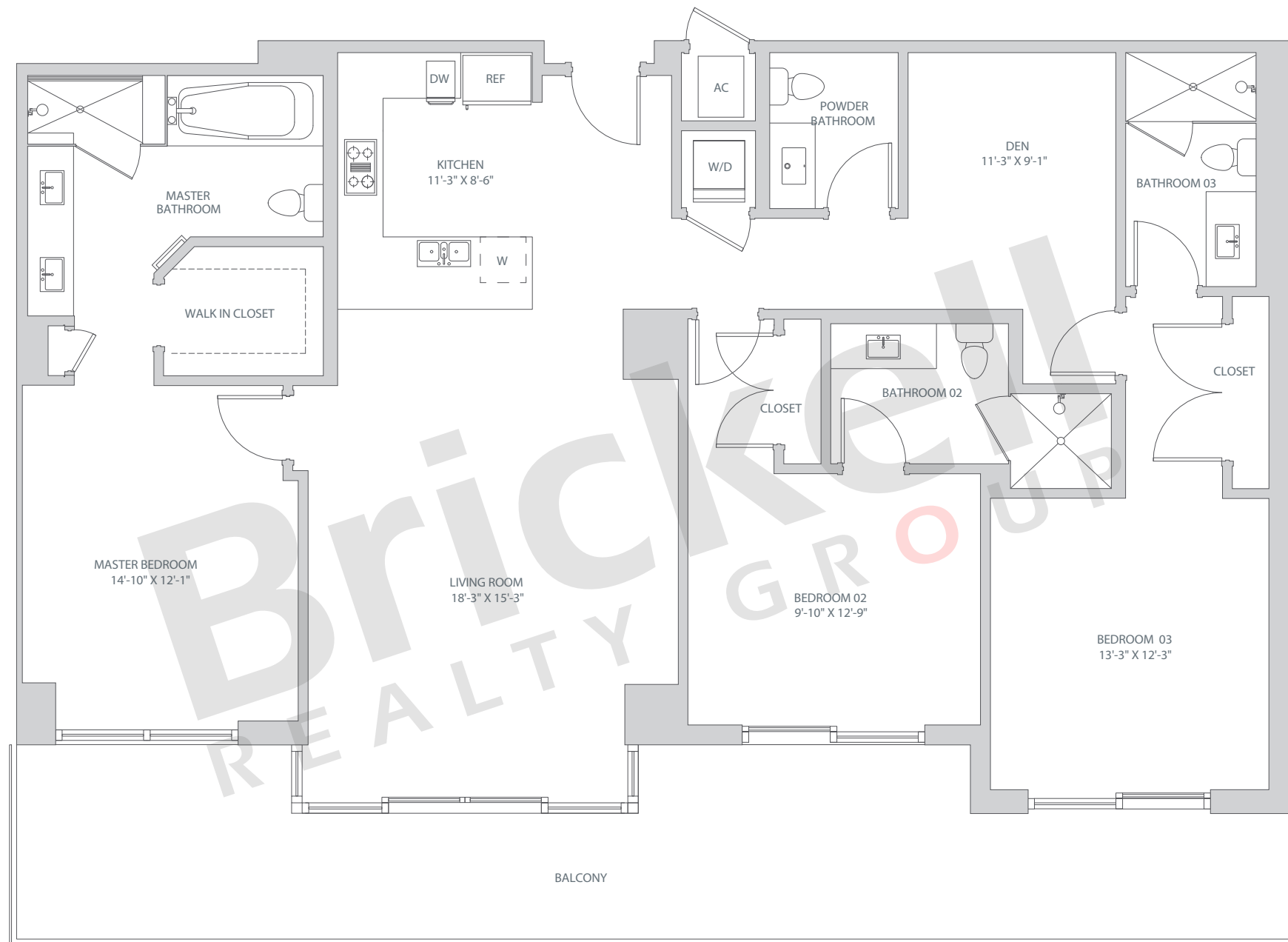
Brickell

REALTY GROUP

2071 NW 112th Avenue, Miami, FL 33172
www.brickell-realty.com/BCC-Reach.html

Oral representation cannot be relied upon as correctly stating representations of the developer. Pictures of homes and condos may not reflect the final products which may vary. Dimensions, specifications, improvements, rendering, plans, land uses, materials, amenities, prices, and availability are subject to change at the developer's discretion without notice.

Stated dimensions are approximate and measured to the exterior boundaries of the exterior walls and the centerline of interior demising walls which in fact vary from the dimensions that would be determined by using the description and definition of the "Unit" set forth in the Declaration (which generally only includes the interior airspace between the perimeter walls and excludes interior structural components).

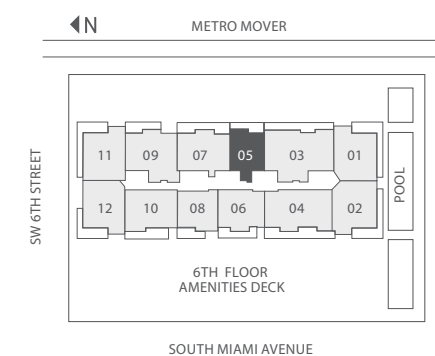
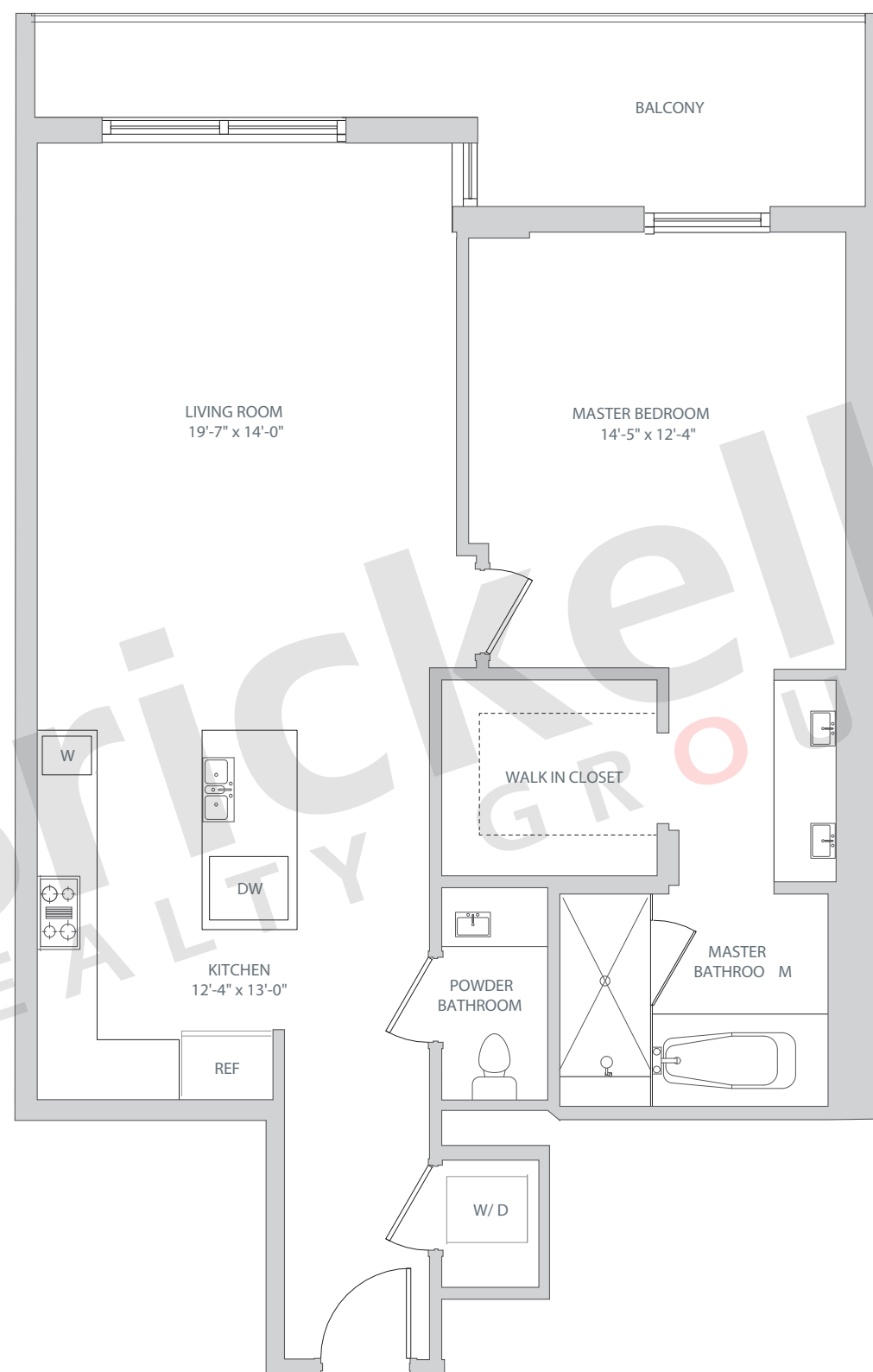


Line 05

Floors: 9-12, 14-41

1 Bedrooms · 1.5 Baths

	SQ FT	M ²
A/C	965	90
Balcony	72-189	7-18
Total	1,038-1,154	96-107



Brickell

REALTY GROUP

2071 NW 112th Avenue, Miami, FL 33172

www.brickell-realty.com/BCC-Reach.html

Oral representation cannot be relied upon as correctly stating representations of the developer. Pictures of homes and condos may not reflect the final products which may vary. Dimensions, specifications, improvements, rendering, plans, land uses, materials, amenities, prices, and availability are subject to change at the developer's discretion without notice.

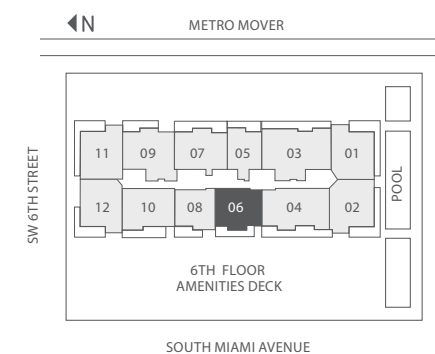
Stated dimensions are approximate and measured to the exterior boundaries of the exterior walls and the centerline of interior demising walls which in fact vary from the dimensions that would be determined by using the description and definition of the "Unit" set forth in the Declaration (which generally only includes the interior airspace between the perimeter walls and excludes interior structural components).

Line 06

Floors: 8-12, 14-41

1 Bedrooms · 1.5 Baths

	SQ FT	M ²
A/C	871	81
Balcony	137-267	13-25
Total	1,008-1,138	93-105



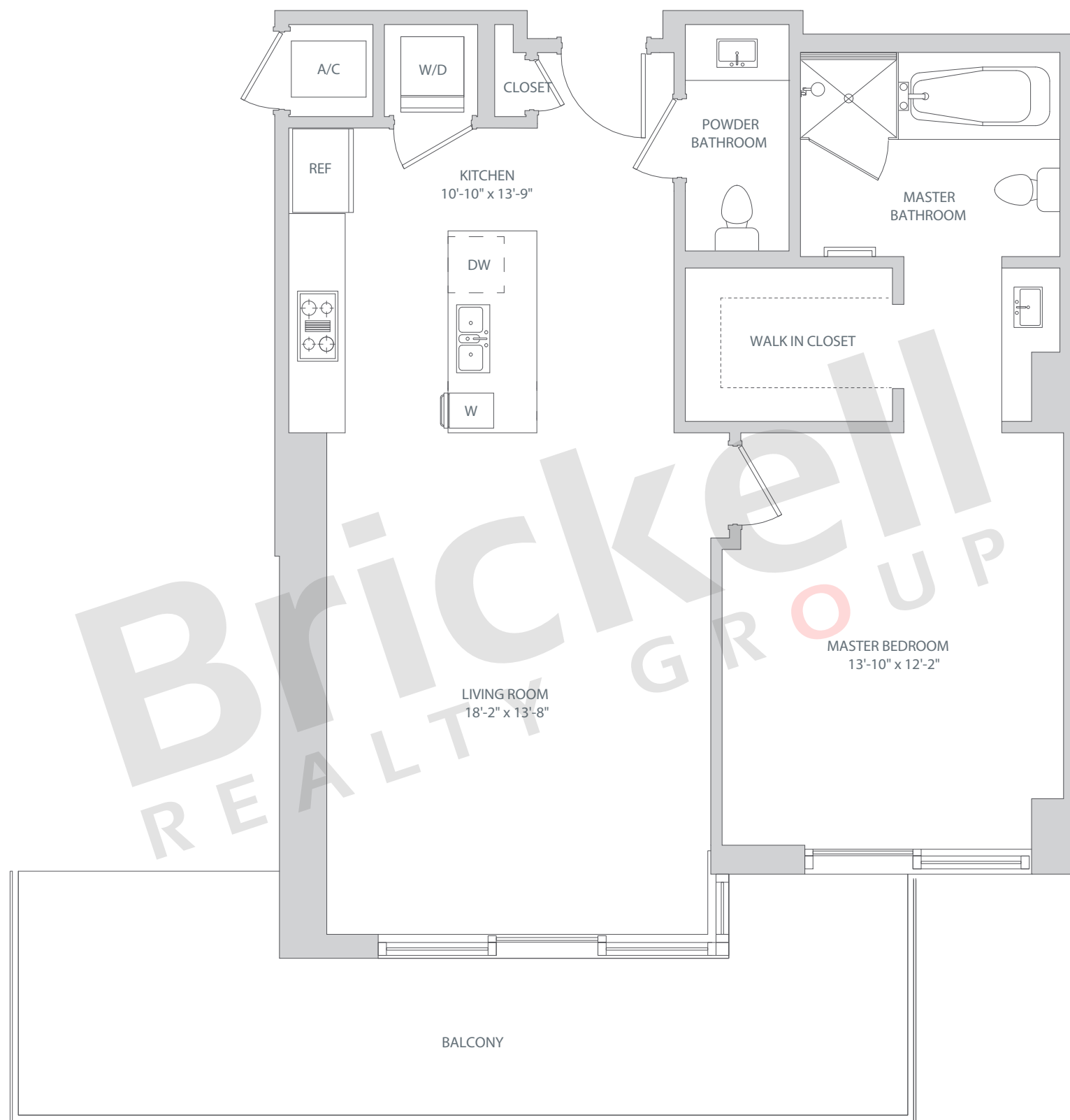
Brickell
REALTY GROUP

2071 NW 112th Avenue, Miami, FL 33172

www.brickell-realty.com/BCC-Reach.html

Oral representation cannot be relied upon as correctly stating representations of the developer. Pictures of homes and condos may not reflect the final products which may vary. Dimensions, specifications, improvements, rendering, plans, land uses, materials, amenities, prices, and availability are subject to change at the developer's discretion without notice.

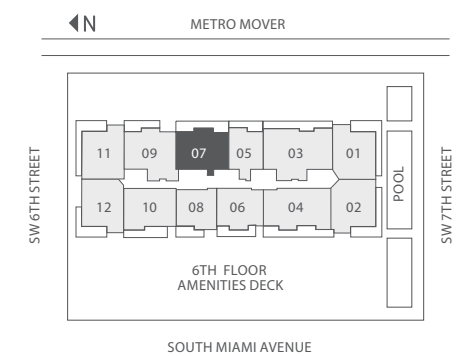
Stated dimensions are approximate and measured to the exterior boundaries of the exterior walls and the centerline of interior demising walls which in fact vary from the dimensions that would be determined by using the description and definition of the "Unit" set forth in the Declaration (which generally only includes the interior airspace between the perimeter walls and excludes interior structural components).



Line 07
Floors: 8-12, 14-41

2 Bedrooms · 2.5 Baths

	SQ FT	M ²
A/C	1,392	129
Balcony	150-306	14-28
Total	1,542-1,698	142-157



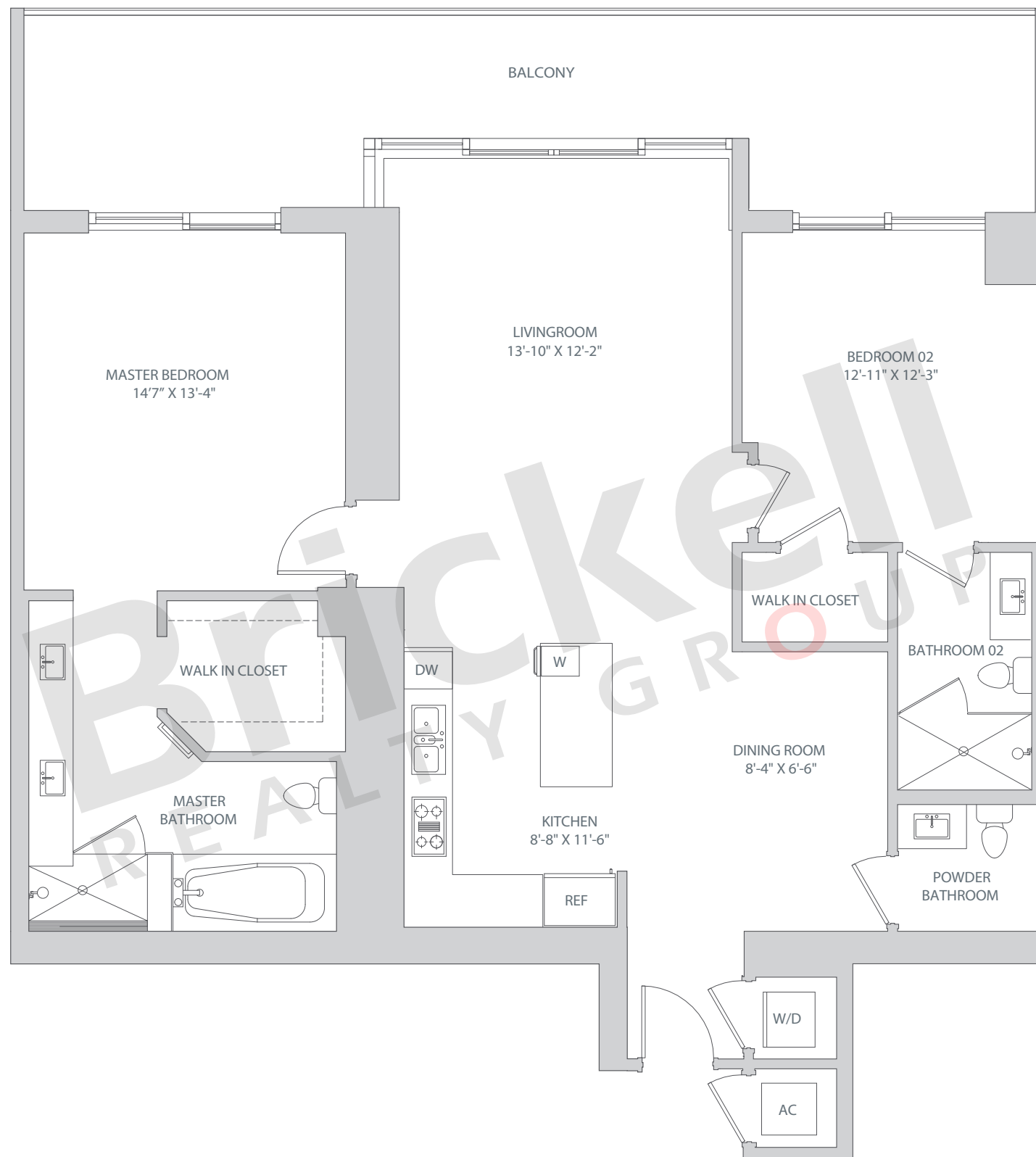
Brickell

REALTY GROUP

2071 NW 112th Avenue, Miami, FL 33172
www.brickell-realty.com/BCC-Reach.html

Oral representation cannot be relied upon as correctly stating representations of the developer. Pictures of homes and condos may not reflect the final products which may vary. Dimensions, specifications, improvements, rendering, plans, land uses, materials, amenities, prices, and availability are subject to change at the developer's discretion without notice.

Stated dimensions are approximate and measured to the exterior boundaries of the exterior walls and the centerline of interior demising walls which in fact vary from the dimensions that would be determined by using the description and definition of the "Unit" set forth in the Declaration (which generally only includes the interior airspace between the perimeter walls and excludes interior structural components).

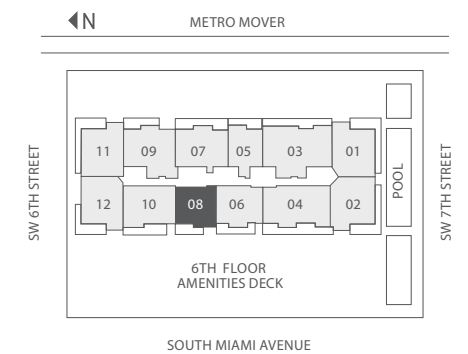


Line 08

Floors: 8-12, 14-41

1 Bedrooms · 1.5 Baths

	SQ FT	M ²
A/C	1,040	97
Balcony	105-219	10-20
Total	1,145-1,259	106-117



Brickell

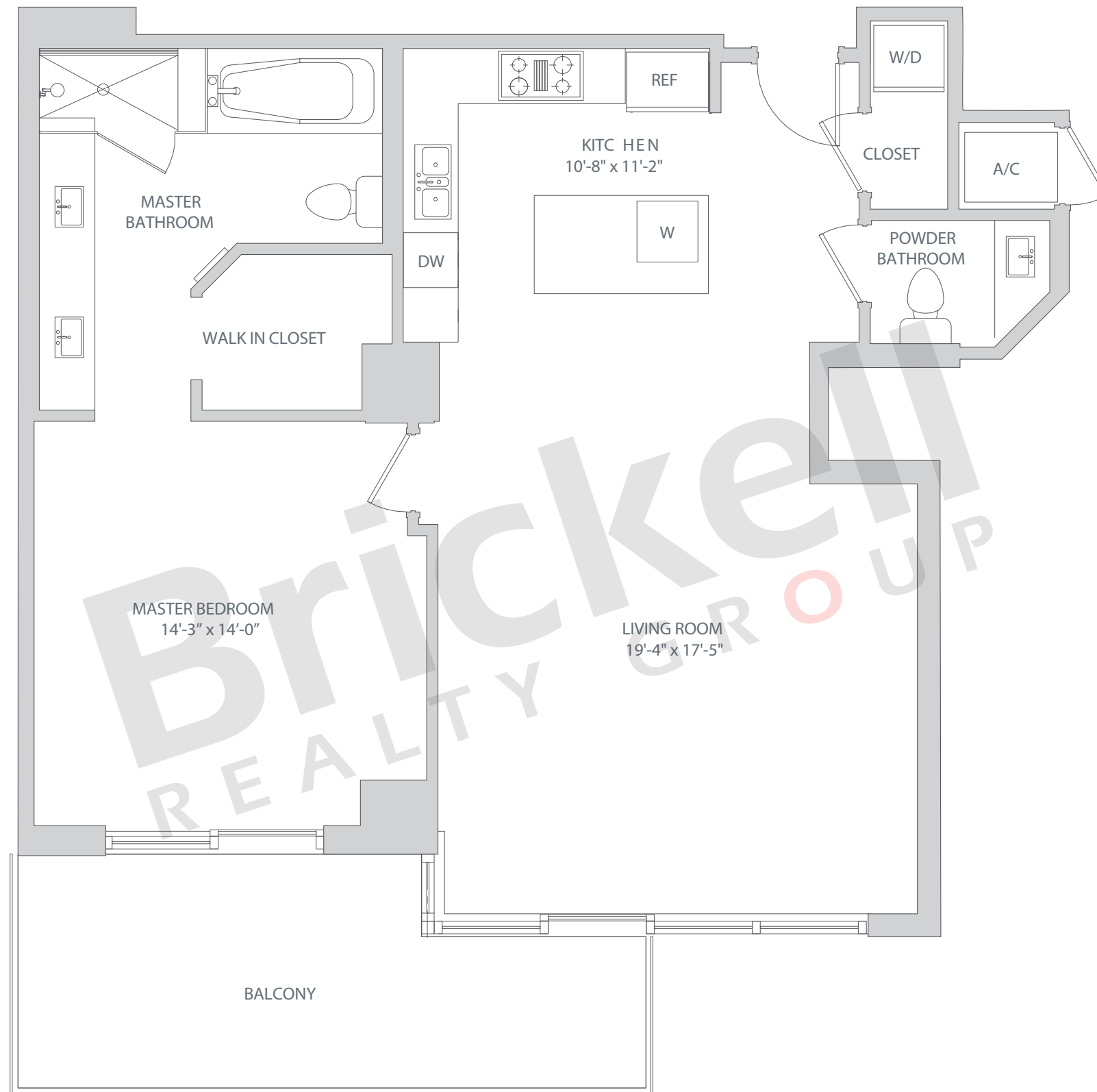
REALTY GROUP

2071 NW 112th Avenue, Miami, FL 33172

www.brickell-realty.com/BCC-Reach.html

Oral representation cannot be relied upon as correctly stating representations of the developer. Pictures of homes and condos may not reflect the final products which may vary. Dimensions, specifications, improvements, rendering, plans, land uses, materials, amenities, prices, and availability are subject to change at the developer's discretion without notice.

Stated dimensions are approximate and measured to the exterior boundaries of the exterior walls and the centerline of interior demising walls which in fact vary from the dimensions that would be determined by using the description and definition of the "Unit" set forth in the Declaration (which generally only includes the interior airspace between the perimeter walls and excludes interior structural components).

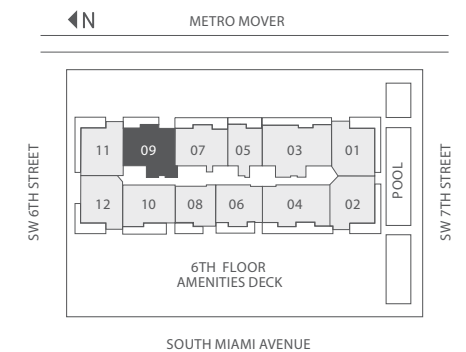
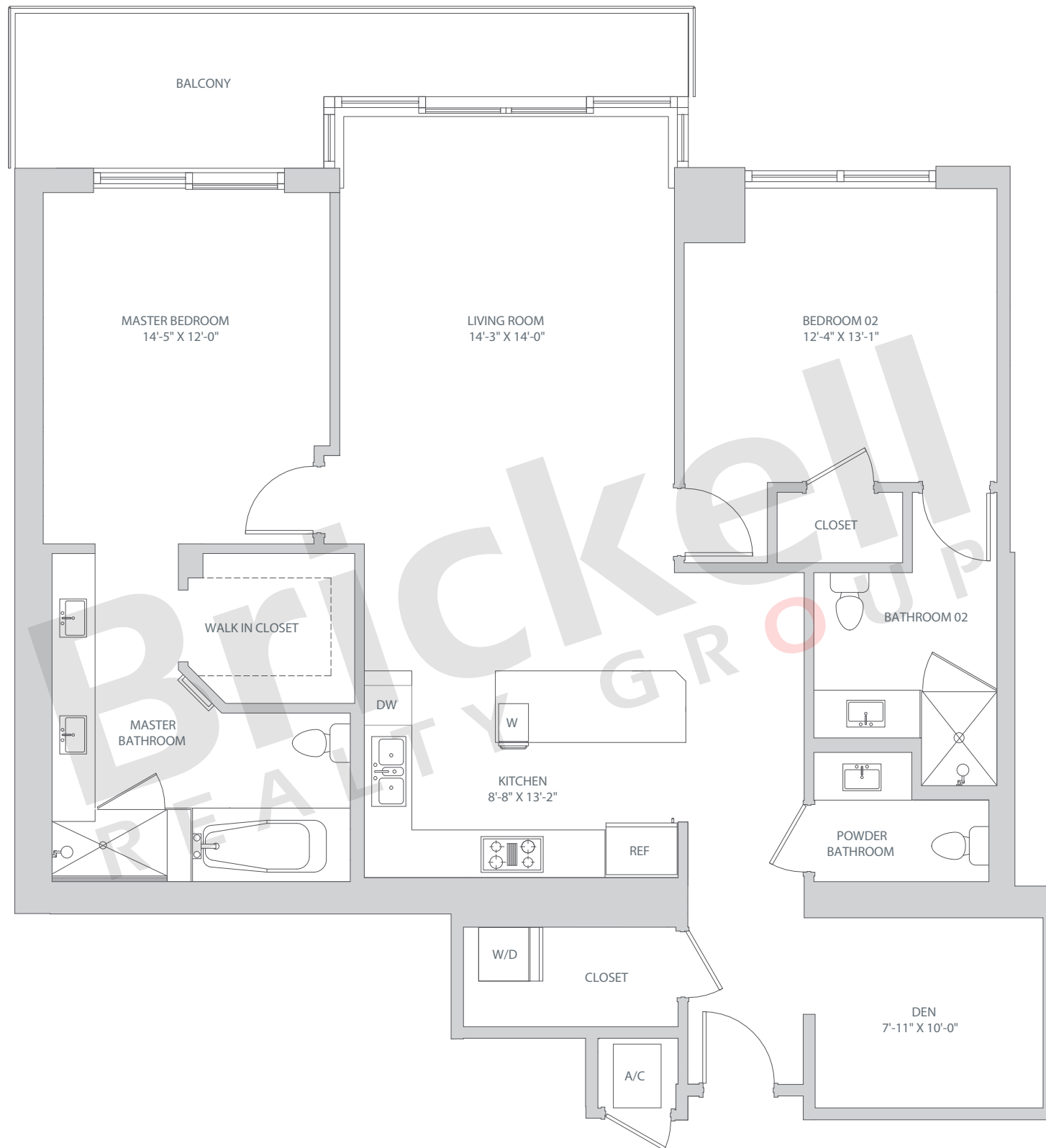


Line 09

Floors: 8-12, 14-41

2 Bedrooms · 2.5 Baths · Den

	SQ FT	M ²
A/C - 8-10	1,500	139
A/C - 11-12, 14-20	1,490	138
A/C - 21-32	1,501	139
A/C - 33-41	1,526	142
Balcony	84-306	8-28
Total	1,585-1,807	147-167



Brickell
REALTY GROUP

2071 NW 112th Avenue, Miami, FL 33172

www.brickell-realty.com/BCC-Reach.html

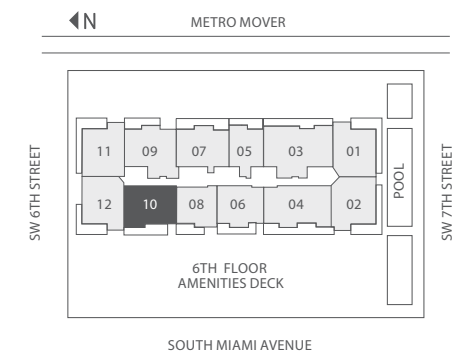
Oral representation cannot be relied upon as correctly stating representations of the developer. Pictures of homes and condos may not reflect the final products which may vary. Dimensions, specifications, improvements, rendering, plans, land uses, materials, amenities, prices, and availability are subject to change at the developer's discretion without notice.

Stated dimensions are approximate and measured to the exterior boundaries of the exterior walls and the centerline of interior demising walls which in fact vary from the dimensions that would be determined by using the description and definition of the "Unit" set forth in the Declaration (which generally only includes the interior airspace between the perimeter walls and excludes interior structural components).

Line 10
Floors: 8-12, 14-41

2 Bedrooms · 2 Baths

	SQ FT	M ²
A/C - 8-12, 14-20	1,307	121
A/C - 21-32	1,317	122
A/C - 33-41	1,323	123
Balcony	159-303	15-28
Total	1,476-1,610	137-149



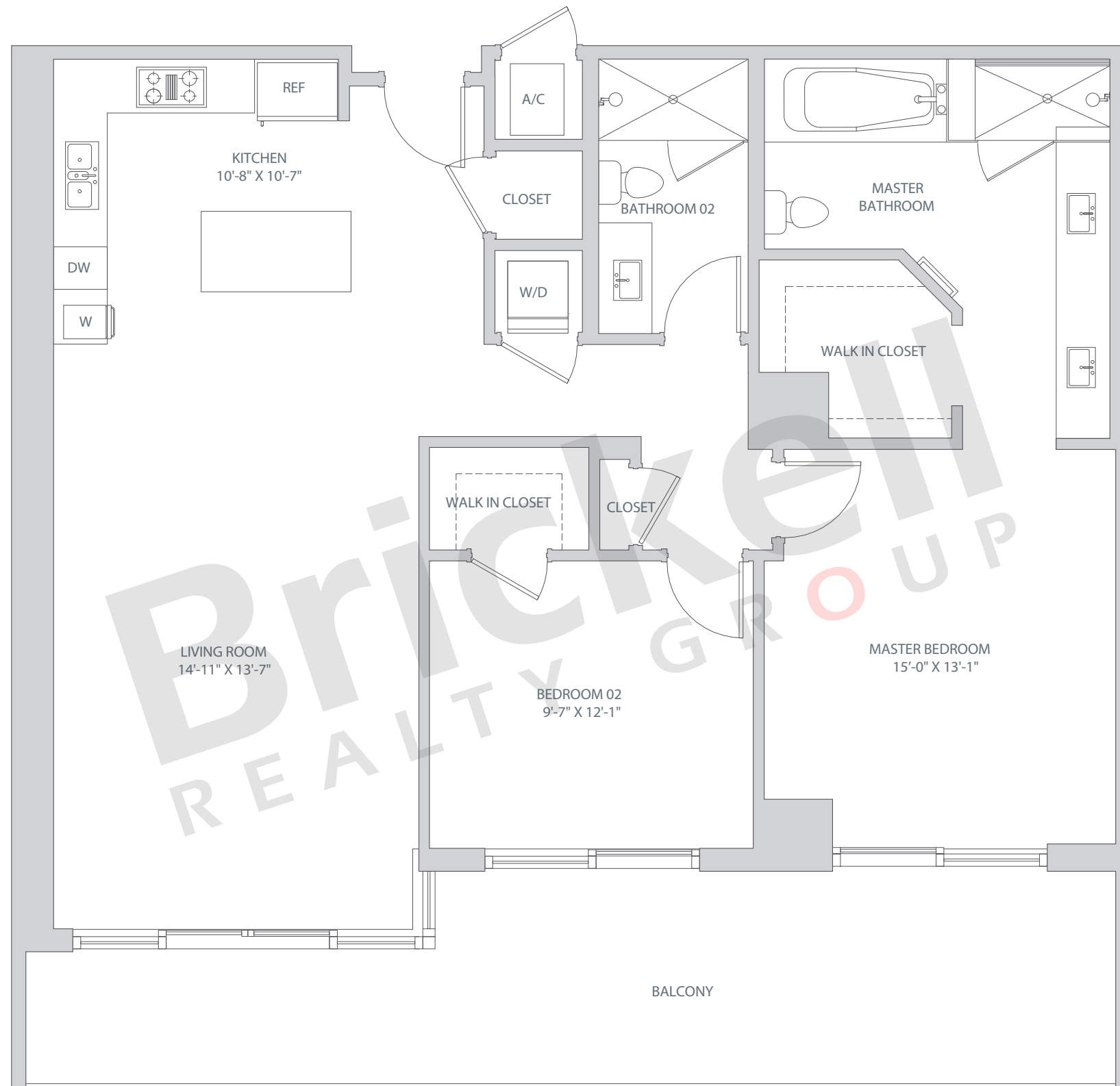
Brickell
REALTY GROUP

2071 NW 112th Avenue, Miami, FL 33172

www.brickell-realty.com/BCC-Reach.html

Oral representation cannot be relied upon as correctly stating representations of the developer. Pictures of homes and condos may not reflect the final products which may vary. Dimensions, specifications, improvements, rendering, plans, land uses, materials, amenities, prices, and availability are subject to change at the developer's discretion without notice.

Stated dimensions are approximate and measured to the exterior boundaries of the exterior walls and the centerline of interior demising walls which in fact vary from the dimensions that would be determined by using the description and definition of the "Unit" set forth in the Declaration (which generally only includes the interior airspace between the perimeter walls and excludes interior structural components).

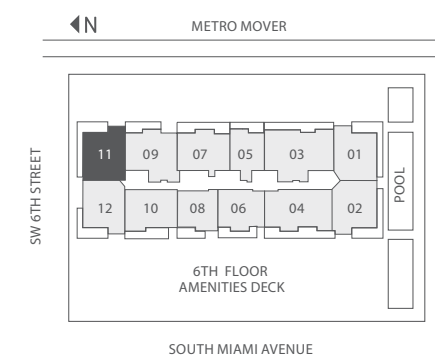
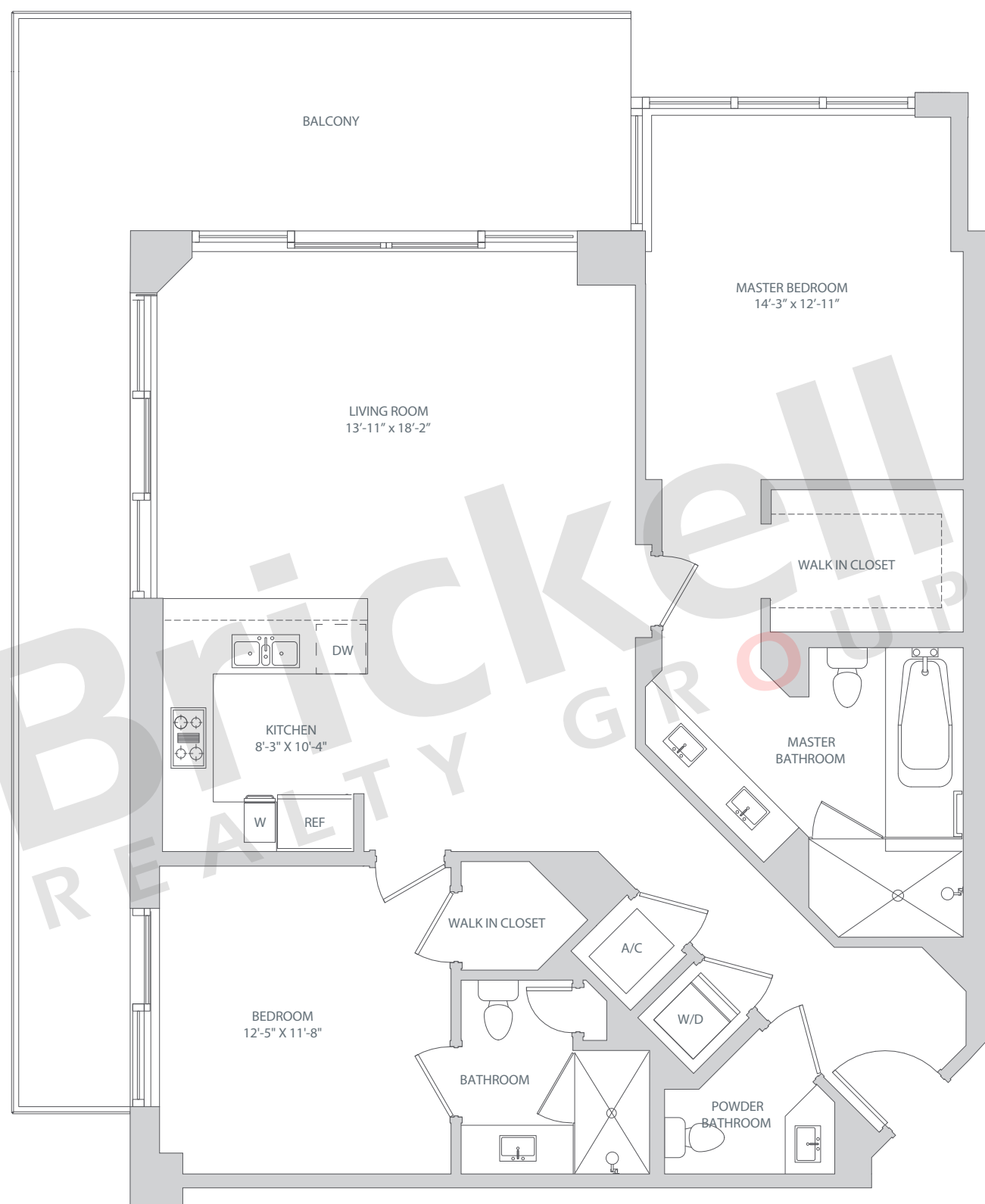


Line 11

Floors: 7-12, 14-36

2 Bedrooms · 2.5 Baths

	SQ FT	M ²
A/C - 7-12, 14-20	1,401	130
A/C - 21-32	1,391	129
A/C - 33-36	1,386	128
Balcony	280-411	26-38
Total	1,665-1,802	154-167



Brickell
REALTY GROUP

2071 NW 112th Avenue, Miami, FL 33172

www.brickell-realty.com/BCC-Reach.html

Oral representation cannot be relied upon as correctly stating representations of the developer. Pictures of homes and condos may not reflect the final products which may vary. Dimensions, specifications, improvements, rendering, plans, land uses, materials, amenities, prices, and availability are subject to change at the developer's discretion without notice.

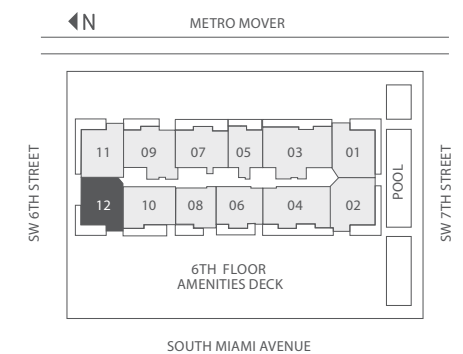
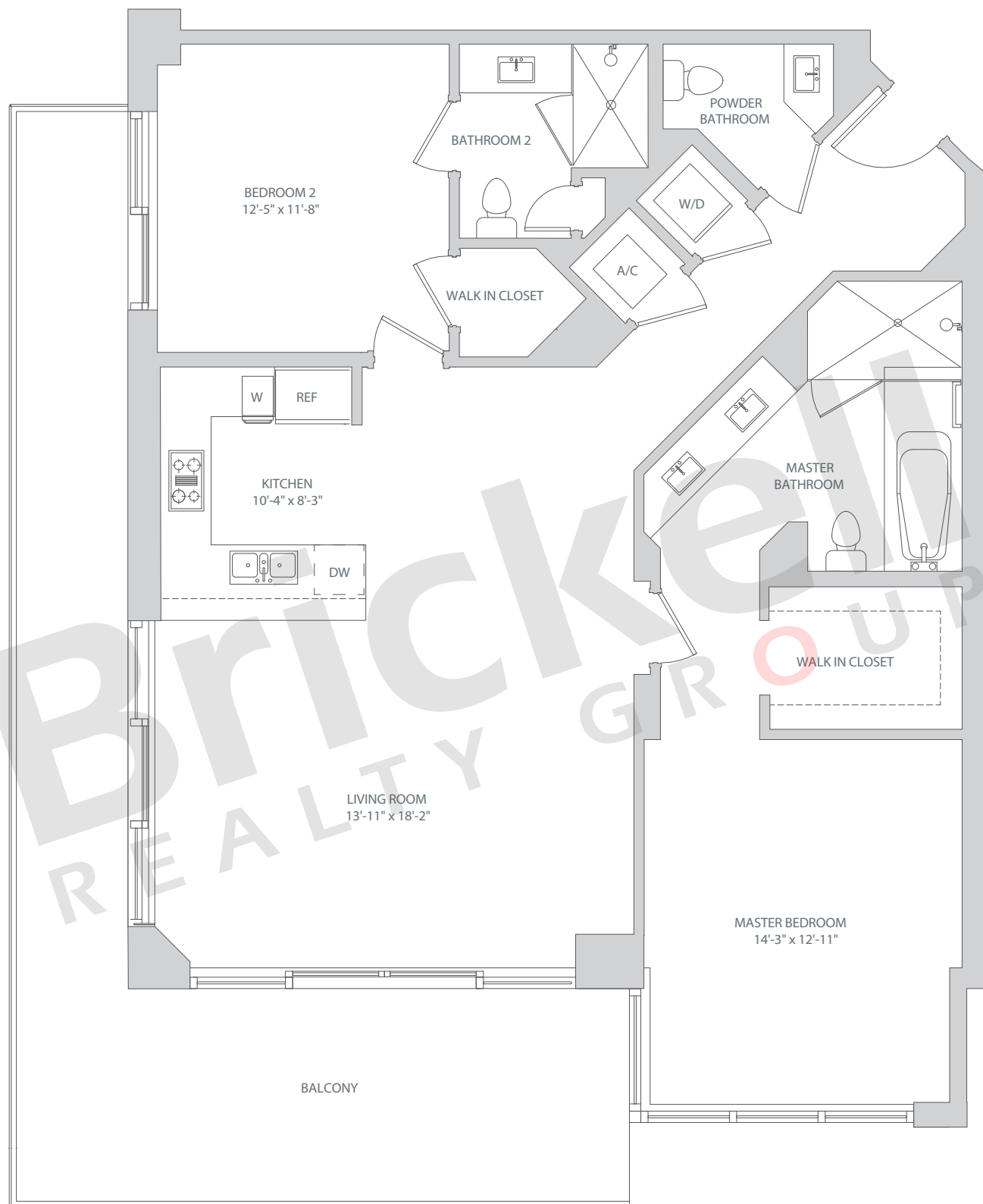
Stated dimensions are approximate and measured to the exterior boundaries of the exterior walls and the centerline of interior demising walls which in fact vary from the dimensions that would be determined by using the description and definition of the "Unit" set forth in the Declaration (which generally only includes the interior airspace between the perimeter walls and excludes interior structural components).

Line 12

Floors: 7-12, 14-36

2 Bedrooms · 2.5 Baths

	SQ FT	M ²
A/C - 7-12, 14-20	1,400	130
A/C - 21-32	1,391	129
A/C - 33-36	1,385	128
Balcony	280-411	26-38
Total	1,665-1,802	154-167



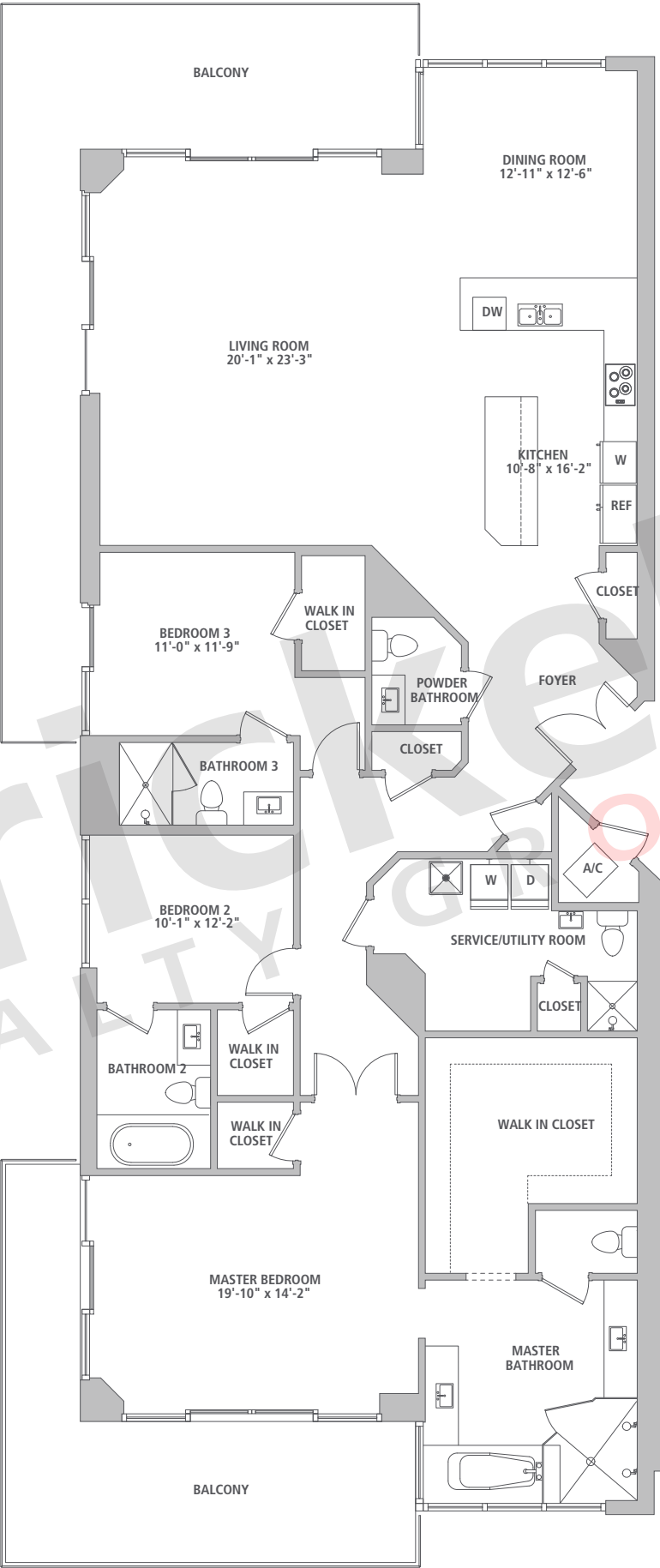
Brickell
REALTY GROUP

2071 NW 112th Avenue, Miami, FL 33172

www.brickell-realty.com/BCC-Reach.html

Oral representation cannot be relied upon as correctly stating representations of the developer. Pictures of homes and condos may not reflect the final products which may vary. Dimensions, specifications, improvements, rendering, plans, land uses, materials, amenities, prices, and availability are subject to change at the developer's discretion without notice.

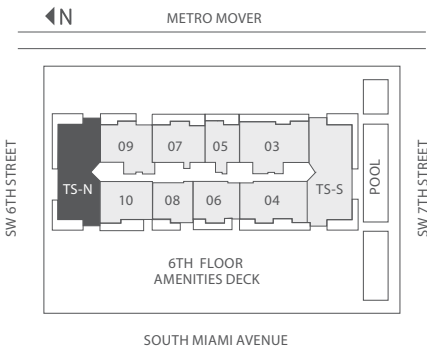
Stated dimensions are approximate and measured to the exterior boundaries of the exterior walls and the centerline of interior demising walls which in fact vary from the dimensions that would be determined by using the description and definition of the "Unit" set forth in the Declaration (which generally only includes the interior airspace between the perimeter walls and excludes interior structural components).



Tower Suite N
Floors: 37-41

3 Bedrooms · 4.5 Baths
Dining · Utility

	SQ FT	M ²
A/C	2,740	255
Balcony	650	60
Total	3,390	315



Brickell
REALTY GROUP

2071 NW 112th Avenue, Miami, FL 33172

www.brickell-realty.com/BCC-Reach.html

Oral representation cannot be relied upon as correctly stating representations of the developer. Pictures of homes and condos may not reflect the final products which may vary. Dimensions, specifications, improvements, rendering, plans, land uses, materials, amenities, prices, and availability are subject to change at the developer's discretion without notice.

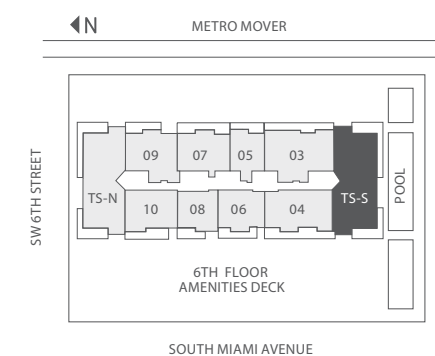
Stated dimensions are approximate and measured to the exterior boundaries of the exterior walls and the centerline of interior demising walls which in fact vary from the dimensions that would be determined by using the description and definition of the "Unit" set forth in the Declaration (which generally only includes the interior airspace between the perimeter walls and excludes interior structural components).

Tower Suite S

Floors: 37-41

3 Bedrooms · 4.5 Baths
Dining · Utility

	SQ FT	M ²
A/C	2,740	255
Balcony	650	60
Total	3,390	315



Brickell
REALTY GROUP

2071 NW 112th Avenue, Miami, FL 33172

www.brickell-realty.com/BCC-Reach.html

Oral representation cannot be relied upon as correctly stating representations of the developer. Pictures of homes and condos may not reflect the final products which may vary. Dimensions, specifications, improvements, rendering, plans, land uses, materials, amenities, prices, and availability are subject to change at the developer's discretion without notice.

Stated dimensions are approximate and measured to the exterior boundaries of the exterior walls and the centerline of interior demising walls which in fact vary from the dimensions that would be determined by using the description and definition of the "Unit" set forth in the Declaration (which generally only includes the interior airspace between the perimeter walls and excludes interior structural components).

