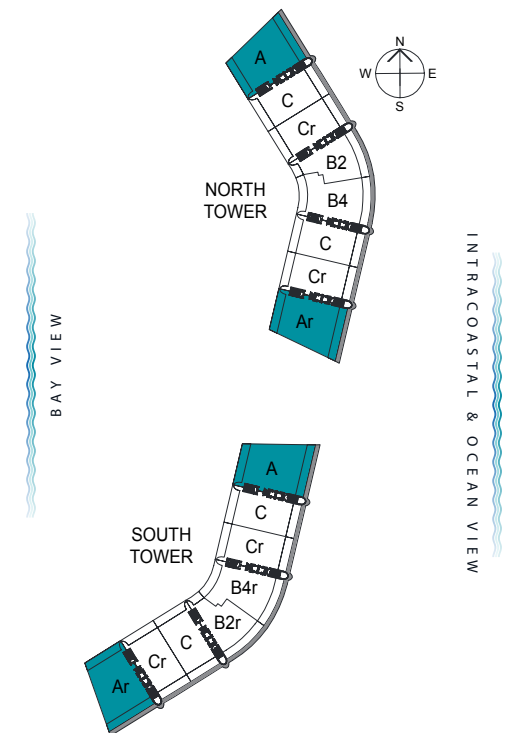
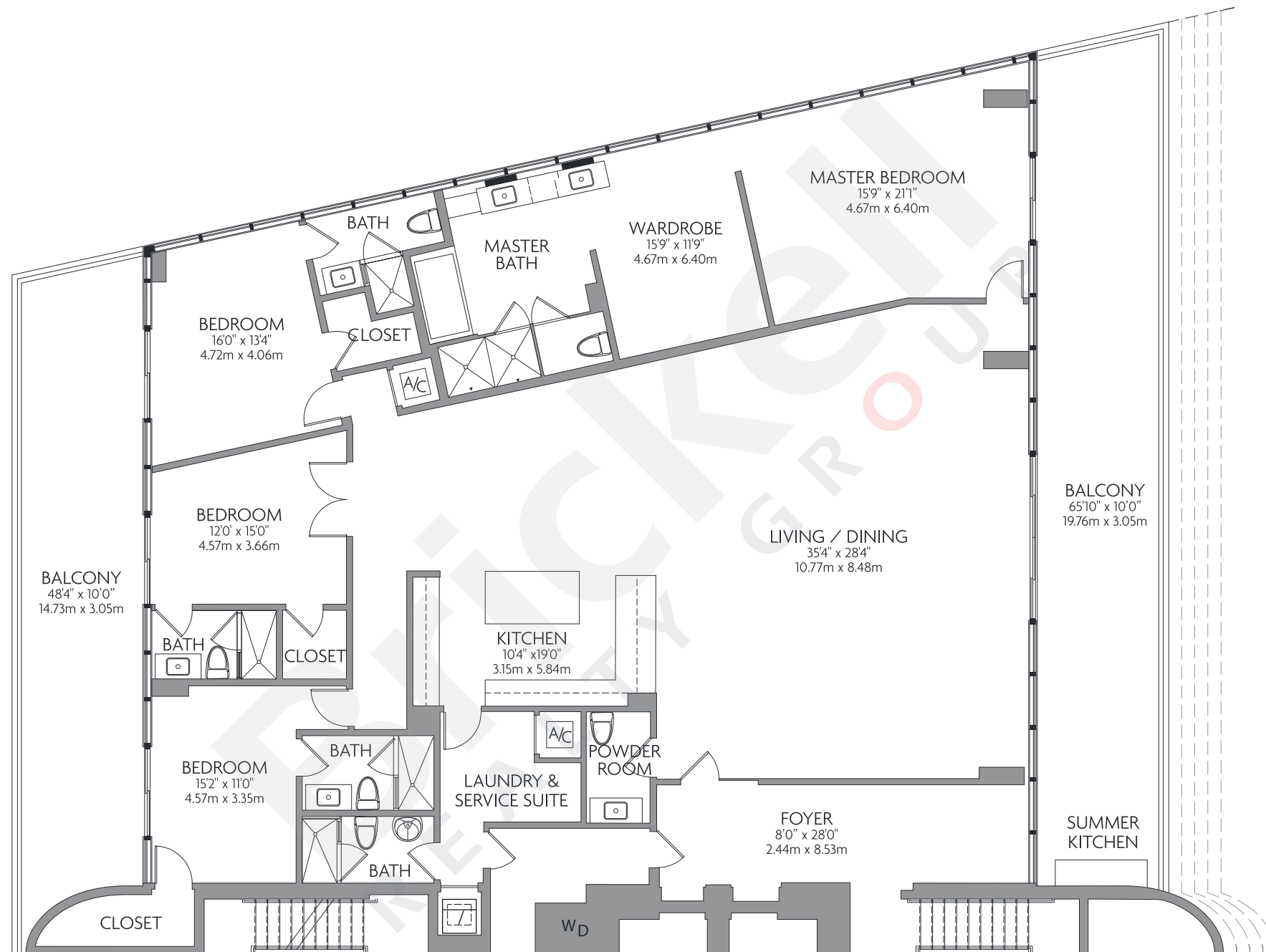


RESIDENCE A

4 Bedrooms · 5.5 Baths

	SQ FT	M ²
Interior	3,927	364.8
Balconies	1,137	105.6
Total	5,064	470.4

*9th Floor unit, add/subtract
64 SF/5.9 M² per level



Brickell
REALTY GROUP

2071 NW 112th Avenue, Miami, FL 33172

www.brickell-realty.com/Prive.html

Oral representation cannot be relied upon as correctly stating representations of the developer. Pictures of homes and condos may not reflect the final products which may vary. Dimensions, specifications, improvements, rendering, plans, land uses, materials, amenities, prices, and availability are subject to change at the developer's discretion without notice.

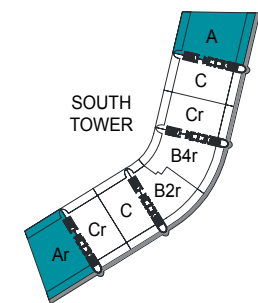
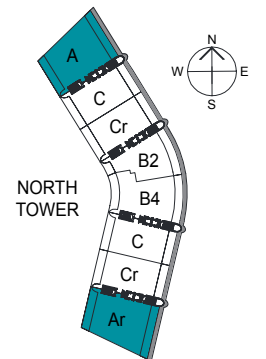
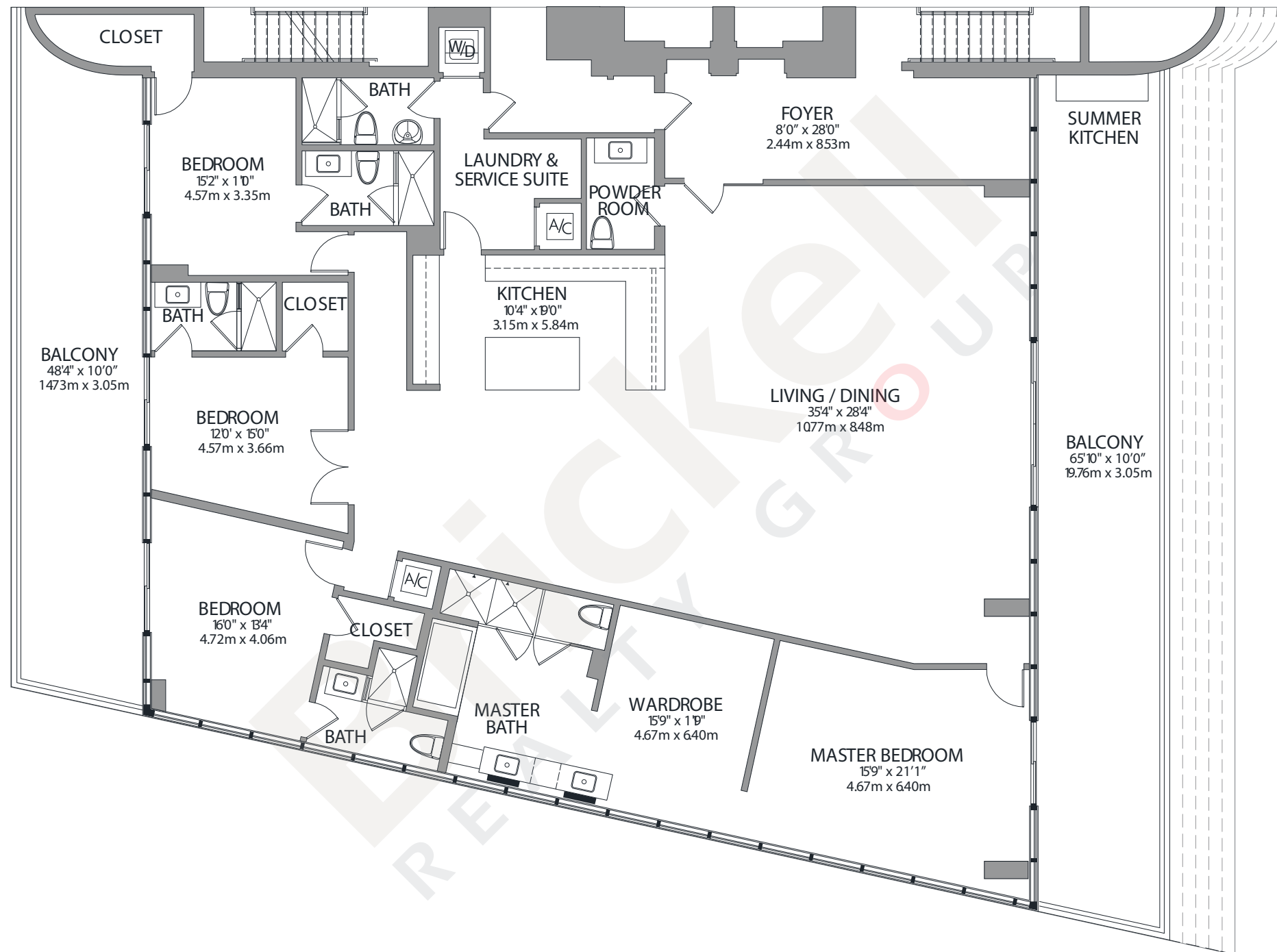
Stated dimensions are approximate and measured to the exterior boundaries of the exterior walls and the centerline of interior demising walls which in fact vary from the dimensions that would be determined by using the description and definition of the "Unit" set forth in the Declaration (which generally only includes the interior airspace between the perimeter walls and excludes interior structural components).

RESIDENCE Ar

4 Bedrooms · 5.5 Baths

	SQ FT	M ²
Interior	3,927	364.8
Balconies	1,137	105.6
Total	5,064	470.4

9th Floor unit, add/subtract
64 SF/5.9 M² per level



BAY VIEW

INTRACOASTAL & OCEAN VIEW

Brickell

REALTY GROUP

2071 NW 112th Avenue, Miami, FL 33172

www.brickell-realty.com/Prive.html

Oral representation cannot be relied upon as correctly stating representations of the developer. Pictures of homes and condos may not reflect the final products which may vary. Dimensions, specifications, improvements, rendering, plans, land uses, materials, amenities, prices, and availability are subject to change at the developer's discretion without notice.

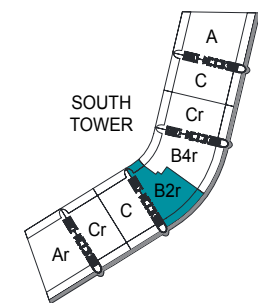
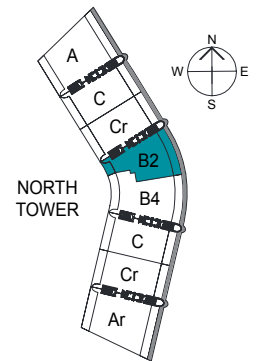
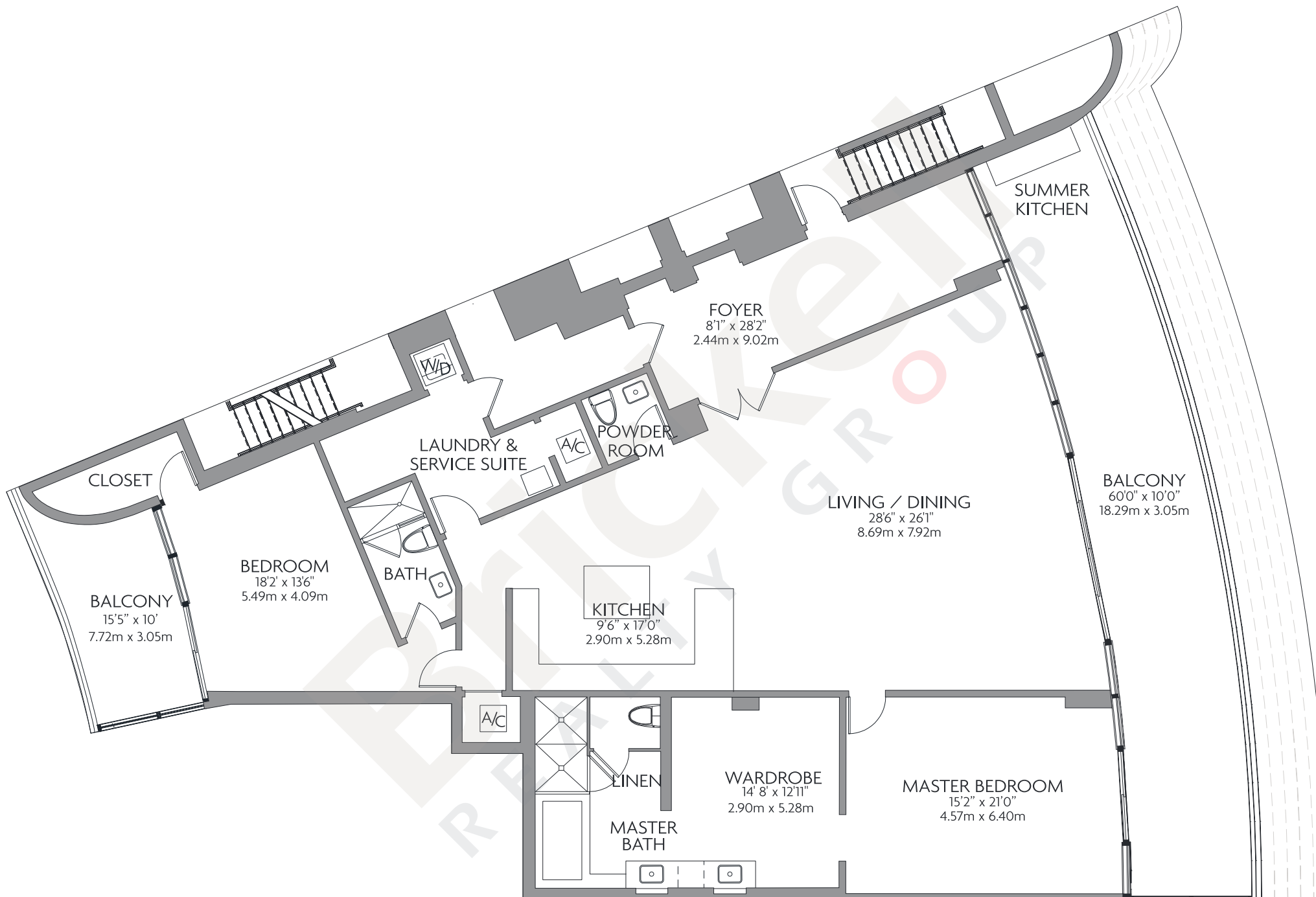
Stated dimensions are approximate and measured to the exterior boundaries of the exterior walls and the centerline of interior demising walls which in fact vary from the dimensions that would be determined by using the description and definition of the "Unit" set forth in the Declaration (which generally only includes the interior airspace between the perimeter walls and excludes interior structural components).

RESIDENCE B2

2 Bedrooms · 3.5 Baths

	SQ FT	M ²
Interior	2,817	261.7
Balconies	762	70.8
Total	3,579	332.5

*9th Floor unit, add/subtract
59 SF/5.5M² per level



BAY VIEW

INTRACOASTAL & OCEAN VIEW

Brickell

REALTY GROUP

2071 NW 112th Avenue, Miami, FL 33172

www.brickell-realty.com/Prive.html

Oral representation cannot be relied upon as correctly stating representations of the developer. Pictures of homes and condos may not reflect the final products which may vary. Dimensions, specifications, improvements, rendering, plans, land uses, materials, amenities, prices, and availability are subject to change at the developer's discretion without notice.

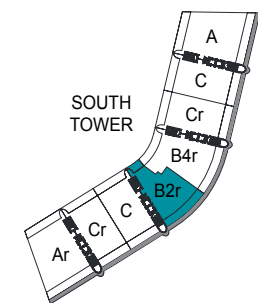
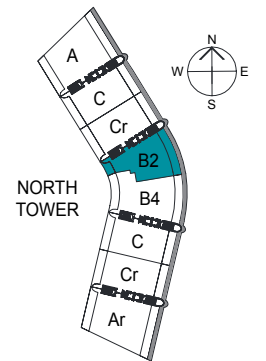
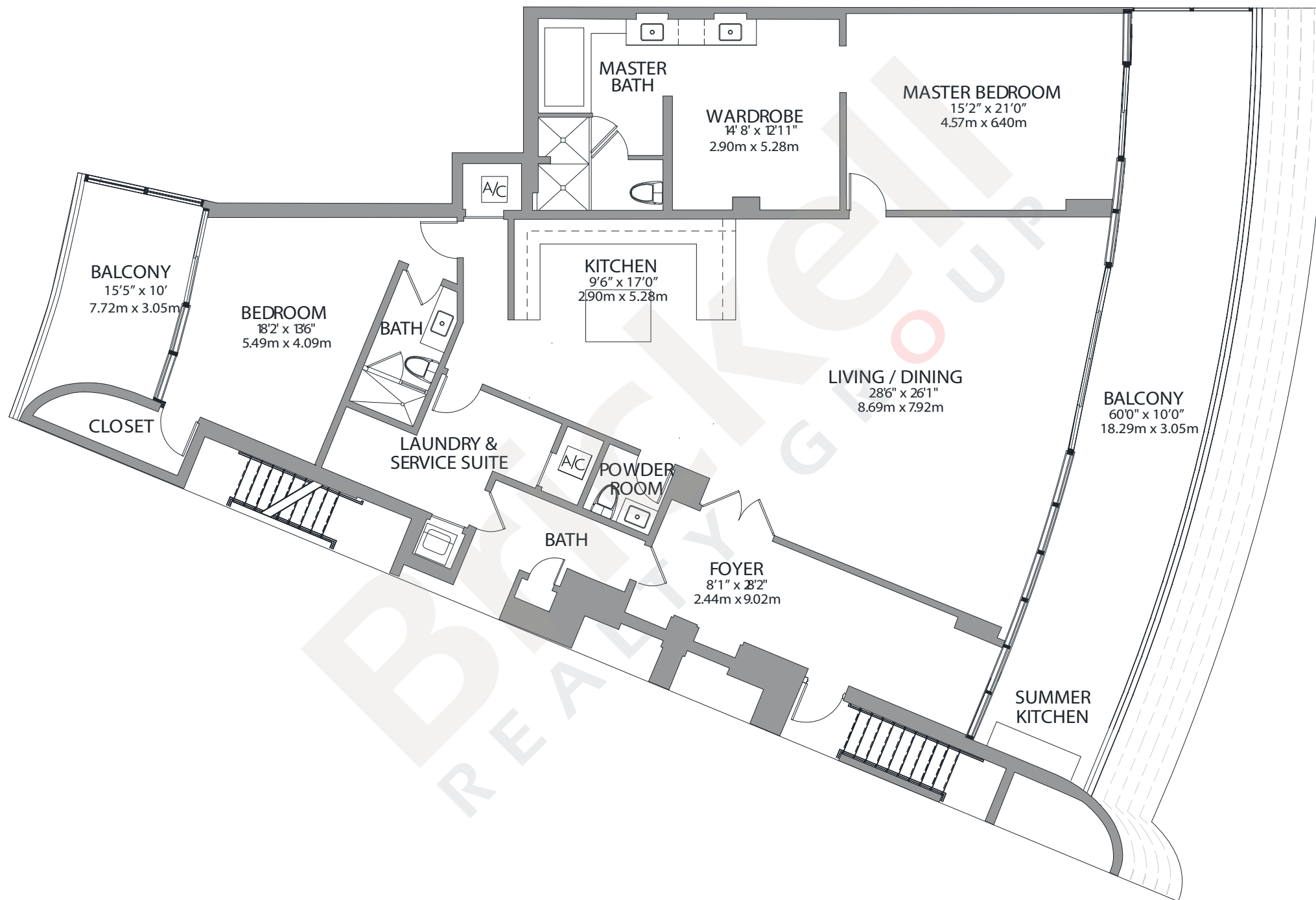
Stated dimensions are approximate and measured to the exterior boundaries of the exterior walls and the centerline of interior demising walls which in fact vary from the dimensions that would be determined by using the description and definition of the "Unit" set forth in the Declaration (which generally only includes the interior airspace between the perimeter walls and excludes interior structural components).

RESIDENCE B2r

2 Bedrooms · 3.5 Baths

	SQ FT	M ²
Interior	2,817	261.7
Balconies	762	70.8
Total	3,579	332.5

*9th Floor unit, add/subtract 59 SF/5.5M² per level



BAY VIEW

INTRACOASTAL & OCEAN VIEW

Brickell

REALTY GROUP

2071 NW 112th Avenue, Miami, FL 33172

www.brickell-realty.com/Prive.html

Oral representation cannot be relied upon as correctly stating representations of the developer. Pictures of homes and condos may not reflect the final products which may vary. Dimensions, specifications, improvements, rendering, plans, land uses, materials, amenities, prices, and availability are subject to change at the developer's discretion without notice.

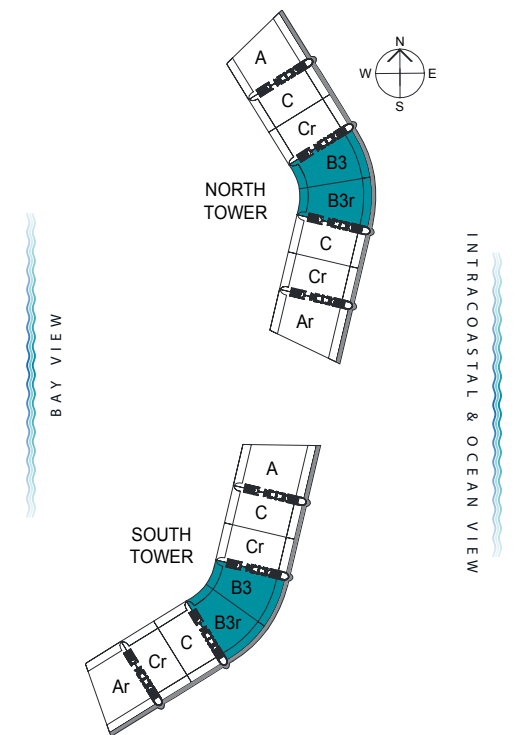
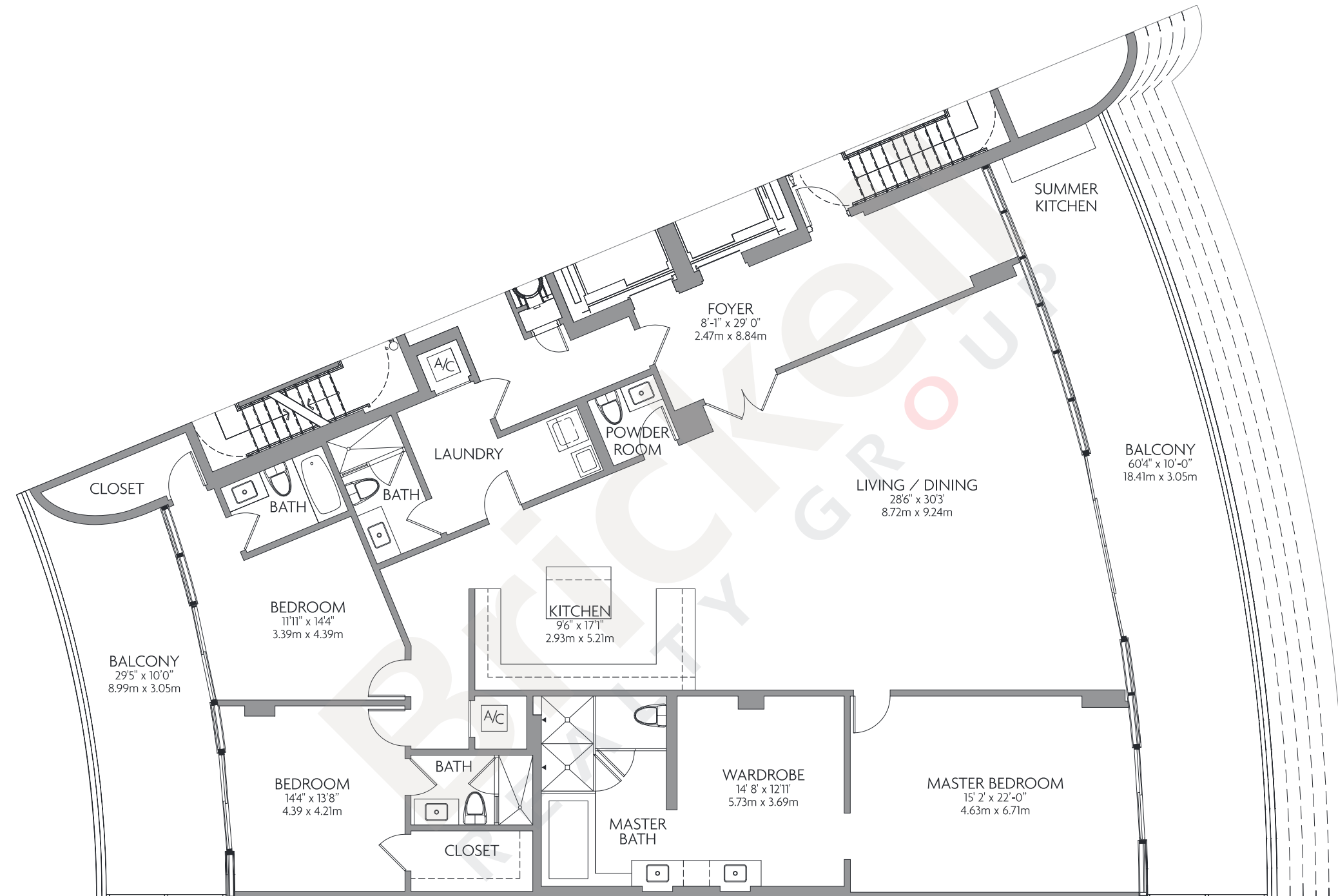
Stated dimensions are approximate and measured to the exterior boundaries of the exterior walls and the centerline of interior demising walls which in fact vary from the dimensions that would be determined by using the description and definition of the "Unit" set forth in the Declaration (which generally only includes the interior airspace between the perimeter walls and excludes interior structural components).

RESIDENCE B3

3 Bedrooms · 4.5 Baths

	SQ FT	M ²
Interior	3,198	297.1
Balconies	913	84.8
Total	4,111	381.9

*10th Floor unit, add/subtract 59 SF/5.5M² per level



Brickell
REALTY GROUP

2071 NW 112th Avenue, Miami, FL 33172

www.brickell-realty.com/Prive.html

Oral representation cannot be relied upon as correctly stating representations of the developer. Pictures of homes and condos may not reflect the final products which may vary. Dimensions, specifications, improvements, rendering, plans, land uses, materials, amenities, prices, and availability are subject to change at the developer's discretion without notice.

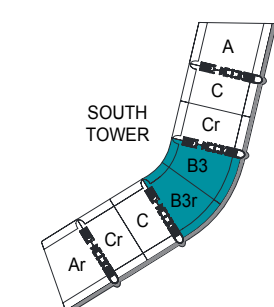
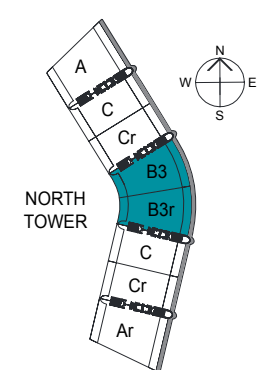
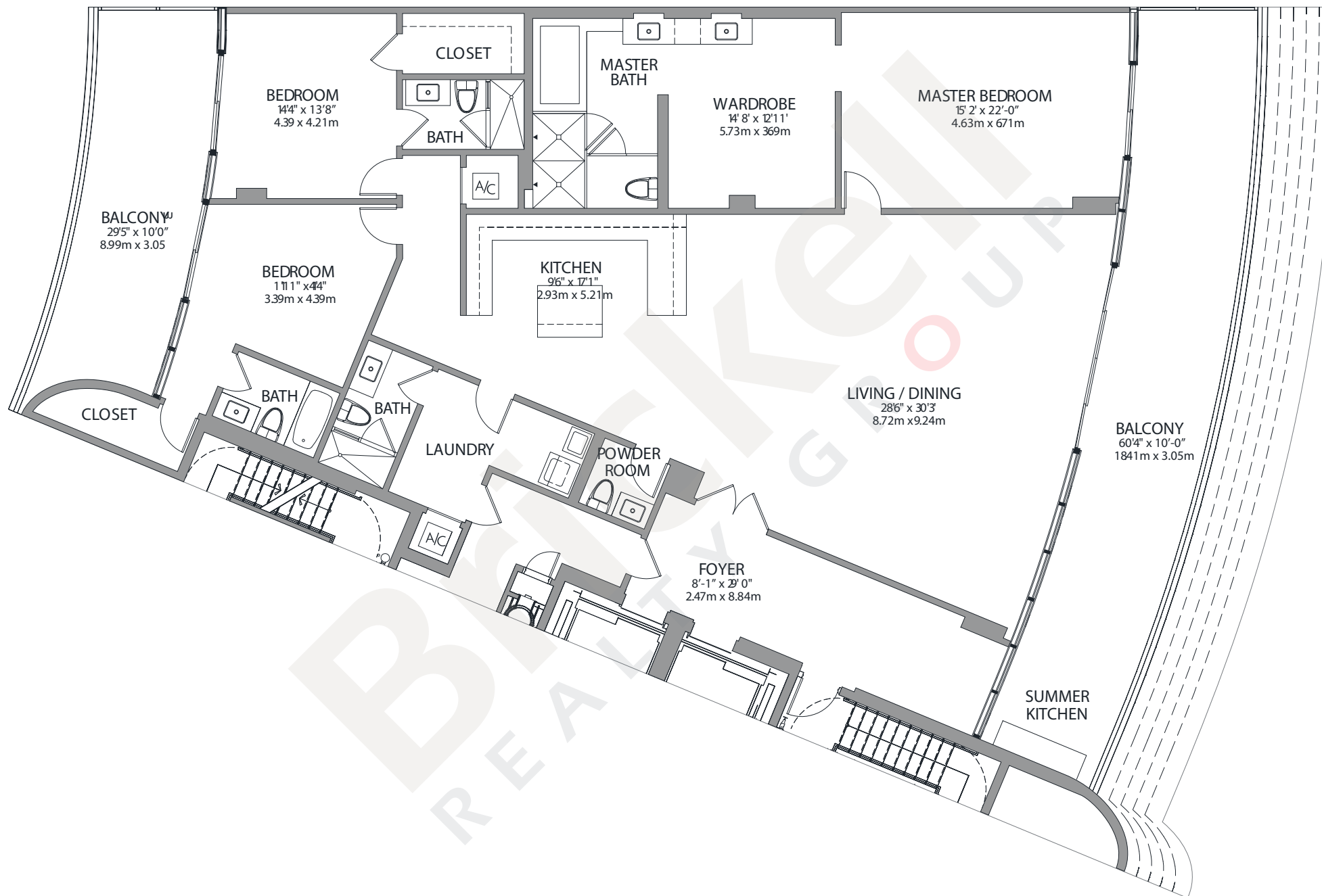
Stated dimensions are approximate and measured to the exterior boundaries of the exterior walls and the centerline of interior demising walls which in fact vary from the dimensions that would be determined by using the description and definition of the "Unit" set forth in the Declaration (which generally only includes the interior airspace between the perimeter walls and excludes interior structural components).

RESIDENCE B3r

3 Bedrooms · 4.5 Baths

	SQ FT	M ²
Interior	3,198	297.1
Balconies	913	84.8
Total	4,111	381.9

*10th Floor unit, add/subtract 59 SF/5.5M² per level



BAY VIEW
INTRACOASTAL & OCEAN VIEW

Brickell

REALTY GROUP

2071 NW 112th Avenue, Miami, FL 33172

www.brickell-realty.com/Prive.html

Oral representation cannot be relied upon as correctly stating representations of the developer. Pictures of homes and condos may not reflect the final products which may vary. Dimensions, specifications, improvements, rendering, plans, land uses, materials, amenities, prices, and availability are subject to change at the developer's discretion without notice.

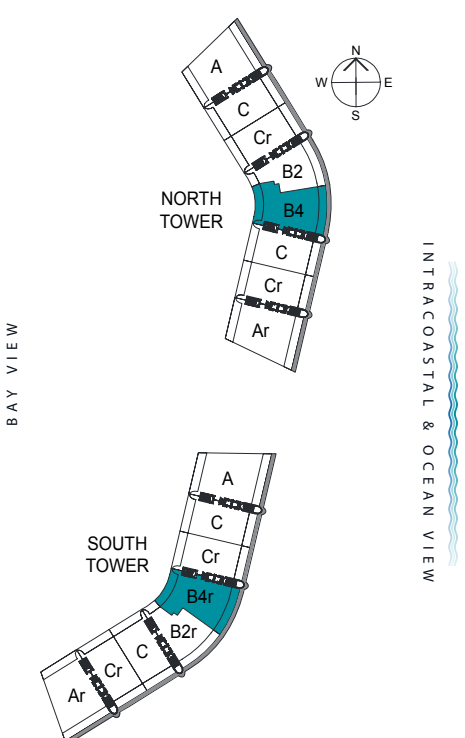
Stated dimensions are approximate and measured to the exterior boundaries of the exterior walls and the centerline of interior demising walls which in fact vary from the dimensions that would be determined by using the description and definition of the "Unit" set forth in the Declaration (which generally only includes the interior airspace between the perimeter walls and excludes interior structural components).

RESIDENCE B4

4 Bedrooms · 5.5 Baths

	SQ FT	M ²
Interior	3,461	321.5
Balconies	1,056	98.1
Total	4,517	419.6

*9th Floor unit, add/subtract 59 SF/5.5M² per level



Brickell

REALTY GROUP

2071 NW 112th Avenue, Miami, FL 33172

www.brickell-realty.com/Prive.html

Oral representation cannot be relied upon as correctly stating representations of the developer. Pictures of homes and condos may not reflect the final products which may vary. Dimensions, specifications, improvements, rendering, plans, land uses, materials, amenities, prices, and availability are subject to change at the developer's discretion without notice.

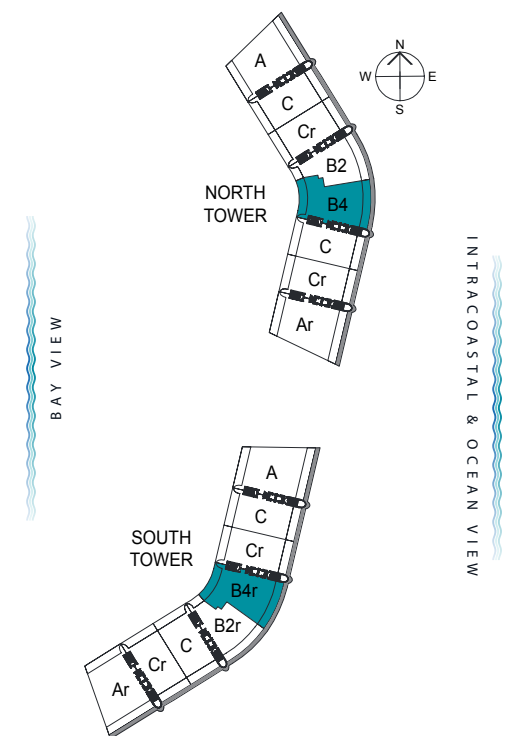
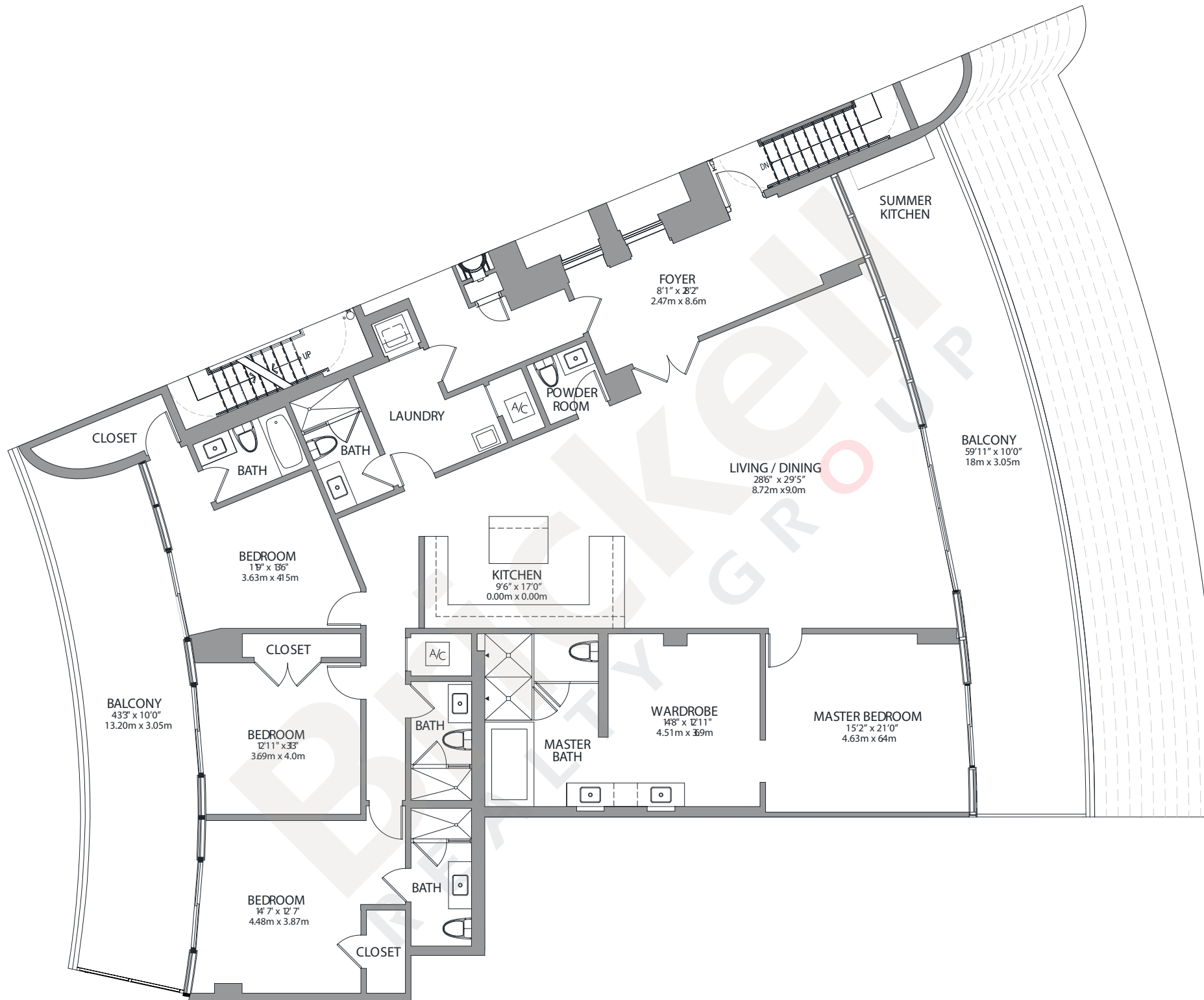
Stated dimensions are approximate and measured to the exterior boundaries of the exterior walls and the centerline of interior demising walls which in fact vary from the dimensions that would be determined by using the description and definition of the "Unit" set forth in the Declaration (which generally only includes the interior airspace between the perimeter walls and excludes interior structural components).

RESIDENCE B4r

4 Bedrooms · 5.5 Baths

	SQ FT	M ²
Interior	3,461	321.5
Balconies	1,056	98.1
Total	4,517	419.6

*9th Floor unit, add/subtract
59 SF/5.5M² per level



Brickell

REALTY GROUP

2071 NW 112th Avenue, Miami, FL 33172

www.brickell-realty.com/Prive.html

Oral representation cannot be relied upon as correctly stating representations of the developer. Pictures of homes and condos may not reflect the final products which may vary. Dimensions, specifications, improvements, rendering, plans, land uses, materials, amenities, prices, and availability are subject to change at the developer's discretion without notice.

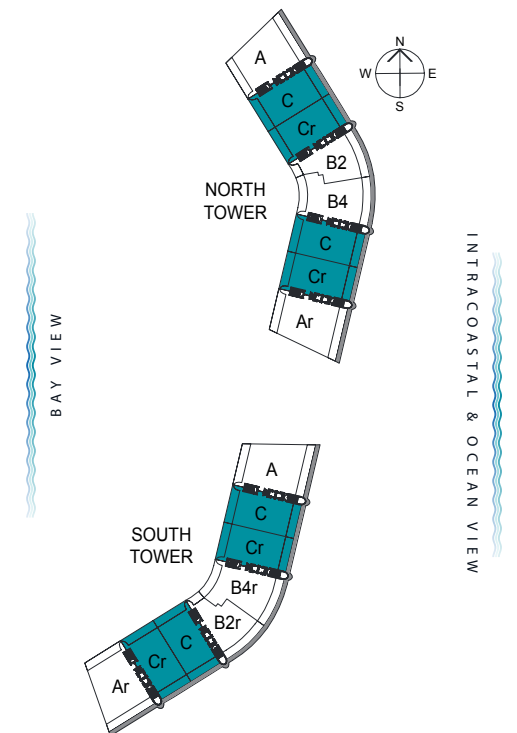
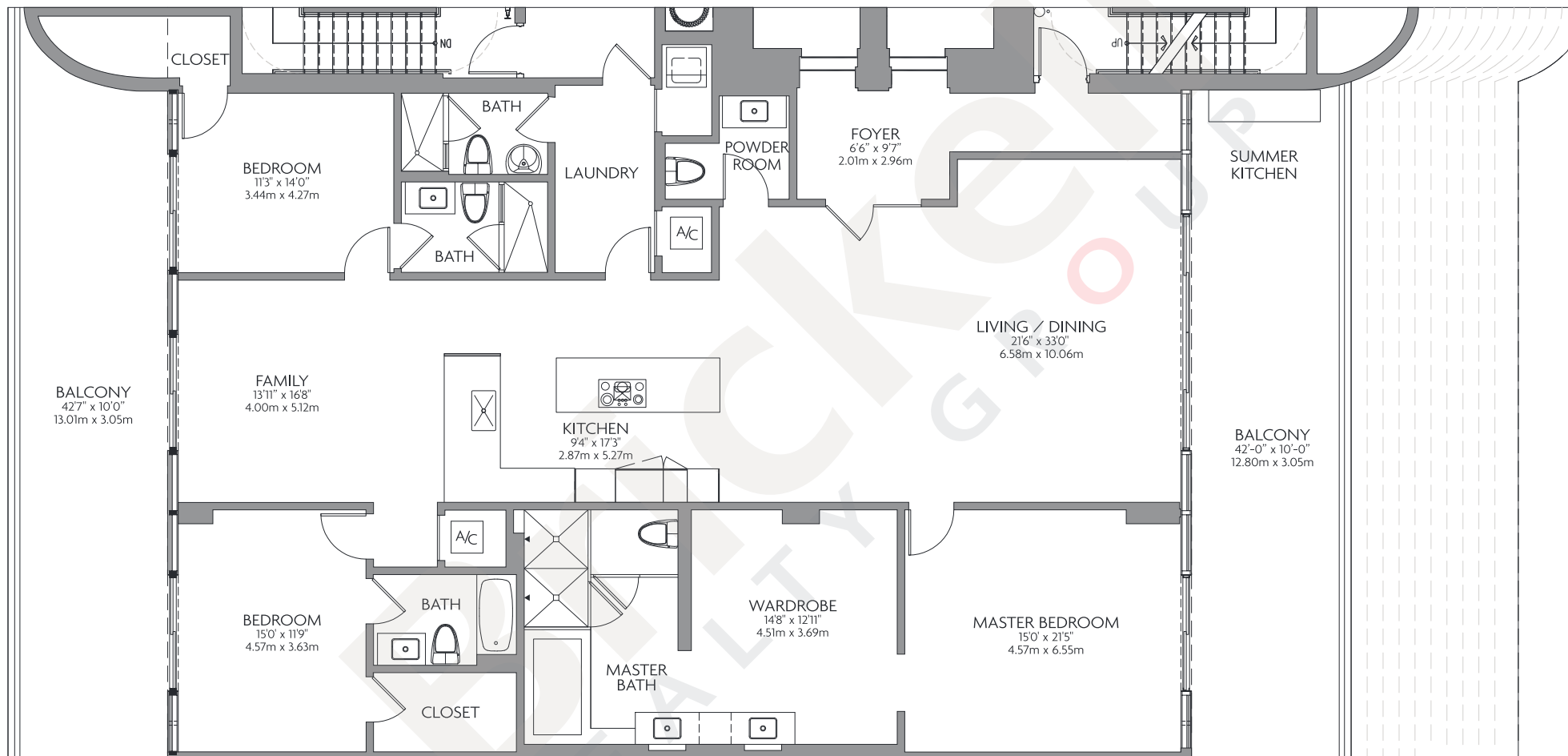
Stated dimensions are approximate and measured to the exterior boundaries of the exterior walls and the centerline of interior demising walls which in fact vary from the dimensions that would be determined by using the description and definition of the "Unit" set forth in the Declaration (which generally only includes the interior airspace between the perimeter walls and excludes interior structural components).

RESIDENCE C

3 Bedrooms · 4.5 Baths

	SQ FT	M ²
Interior	2,979	276.8
Balconies	854	79.3
Total	3,833	356.1

*9th Floor unit, add/subtract 43 SF/4M² per level



Brickell REALTY GROUP

2071 NW 112th Avenue, Miami, FL 33172

www.brickell-realty.com/Prive.html

Oral representation cannot be relied upon as correctly stating representations of the developer. Pictures of homes and condos may not reflect the final products which may vary. Dimensions, specifications, improvements, rendering, plans, land uses, materials, amenities, prices, and availability are subject to change at the developer's discretion without notice.

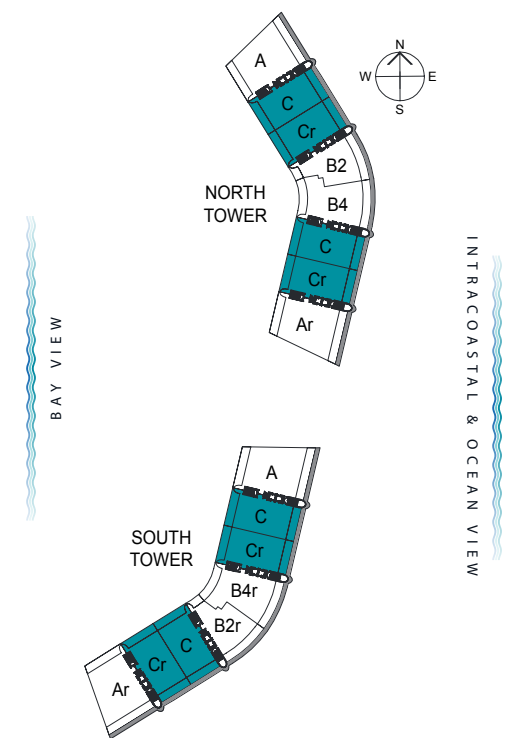
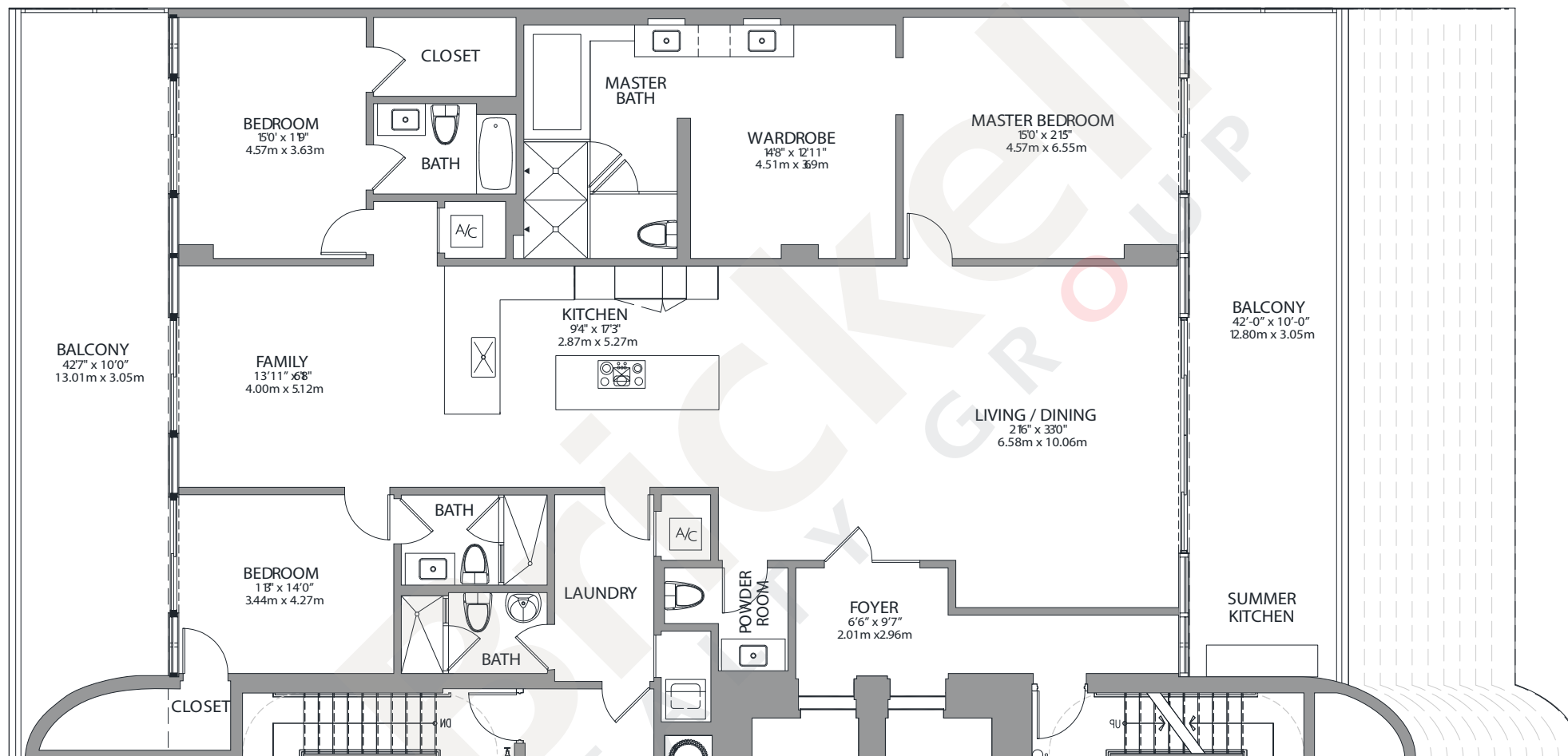
Stated dimensions are approximate and measured to the exterior boundaries of the exterior walls and the centerline of interior demising walls which in fact vary from the dimensions that would be determined by using the description and definition of the "Unit" set forth in the Declaration (which generally only includes the interior airspace between the perimeter walls and excludes interior structural components).

RESIDENCE Cr

3 Bedrooms · 4.5 Baths

	SQ FT	M ²
Interior	2,979	276.8
Balconies	854	79.3
Total	3,833	356.1

*9th Floor unit, add/subtract 43 SF/4M² per level



Brickell

REALTY GROUP

2071 NW 112th Avenue, Miami, FL 33172

www.brickell-realty.com/Prive.html

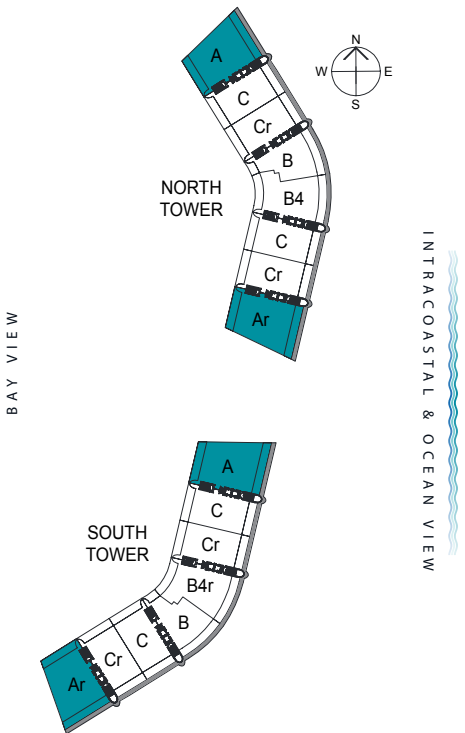
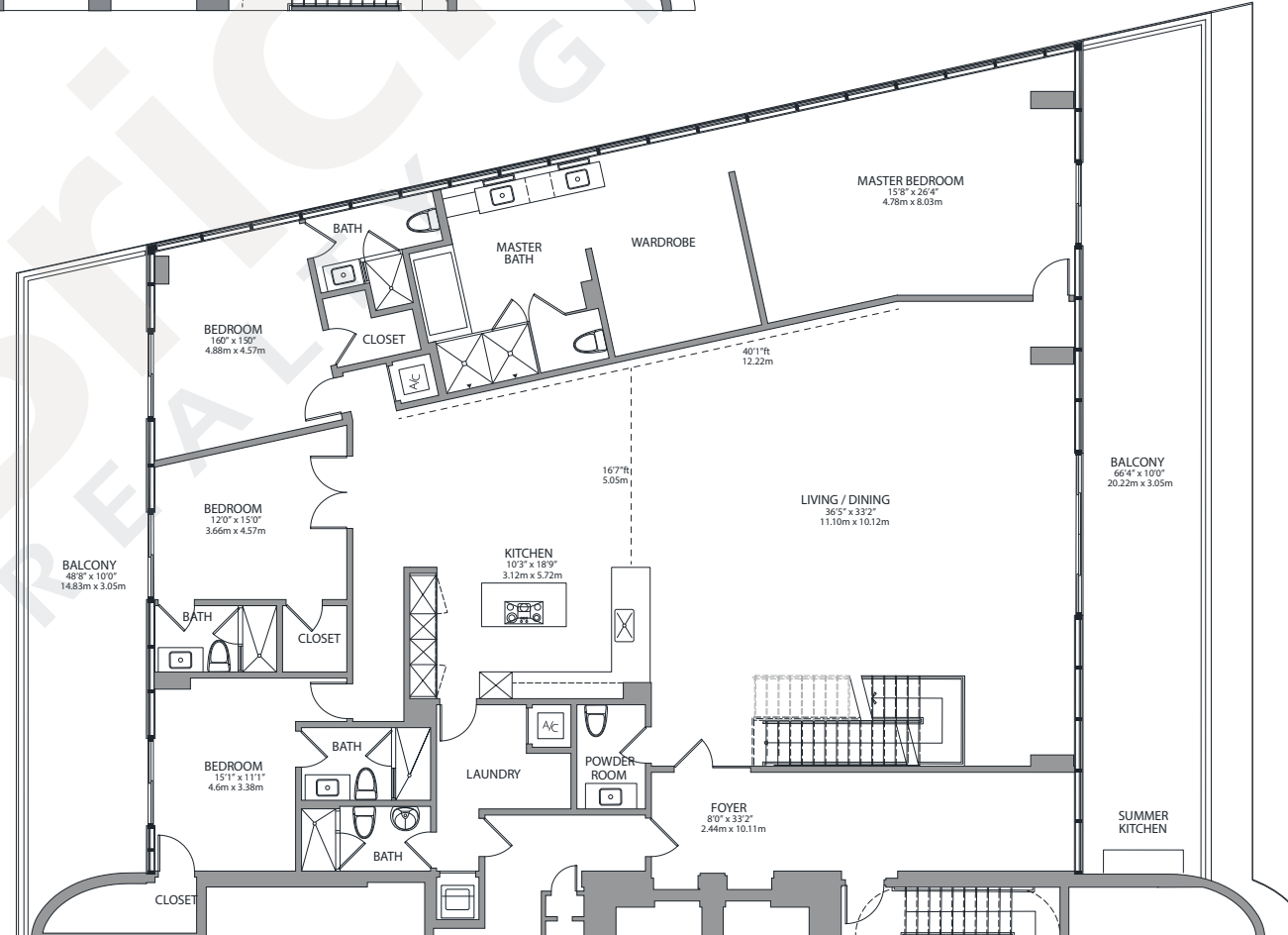
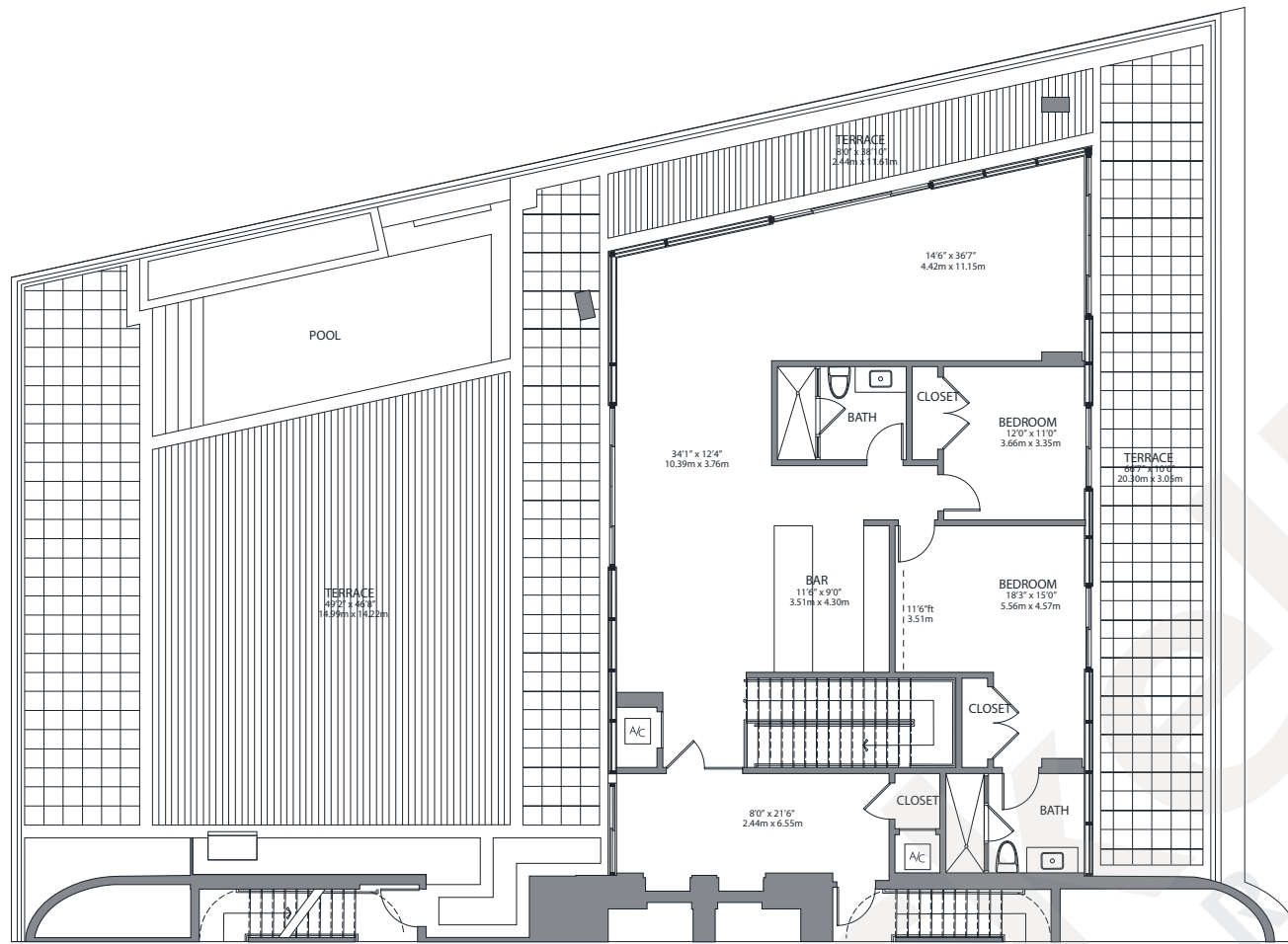
Oral representation cannot be relied upon as correctly stating representations of the developer. Pictures of homes and condos may not reflect the final products which may vary. Dimensions, specifications, improvements, rendering, plans, land uses, materials, amenities, prices, and availability are subject to change at the developer's discretion without notice.

Stated dimensions are approximate and measured to the exterior boundaries of the exterior walls and the centerline of interior demising walls which in fact vary from the dimensions that would be determined by using the description and definition of the "Unit" set forth in the Declaration (which generally only includes the interior airspace between the perimeter walls and excludes interior structural components).

PENTHOUSE A

6 Bedrooms · 7.5 Baths

	SQ FT	M ²
Interior	6,200	576.0
Balconies/Terraces	4,622	429.4
Total	10,822	1,005.4



Brickell
REALTY GROUP

2071 NW 112th Avenue, Miami, FL 33172

www.brickell-realty.com/Prive.html

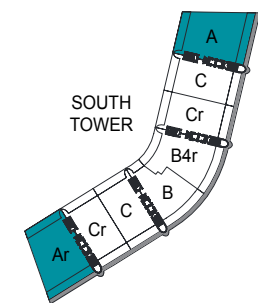
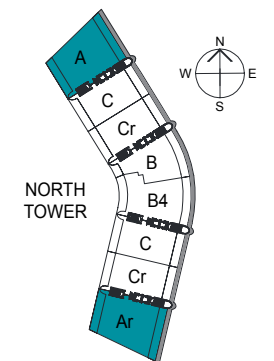
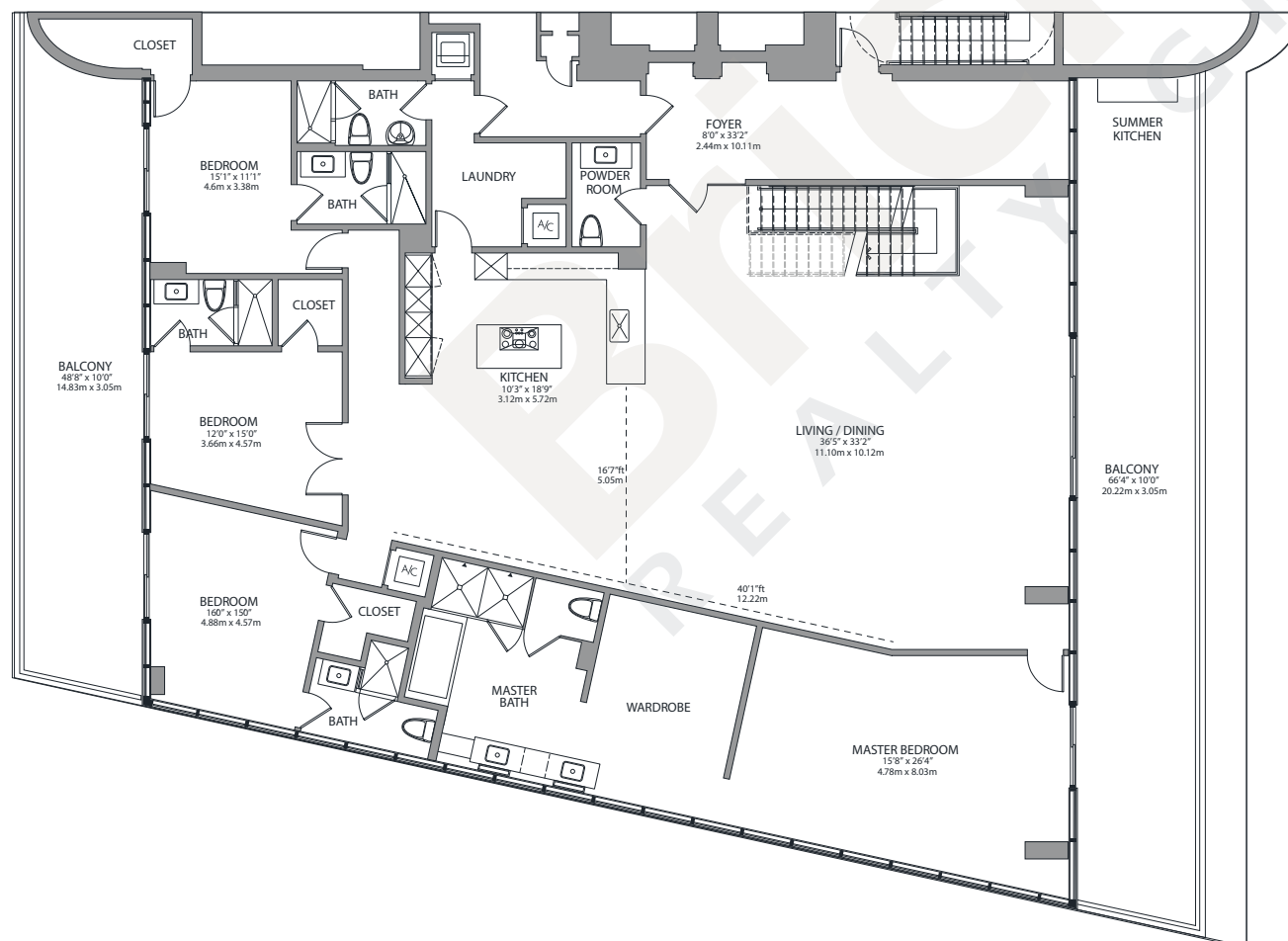
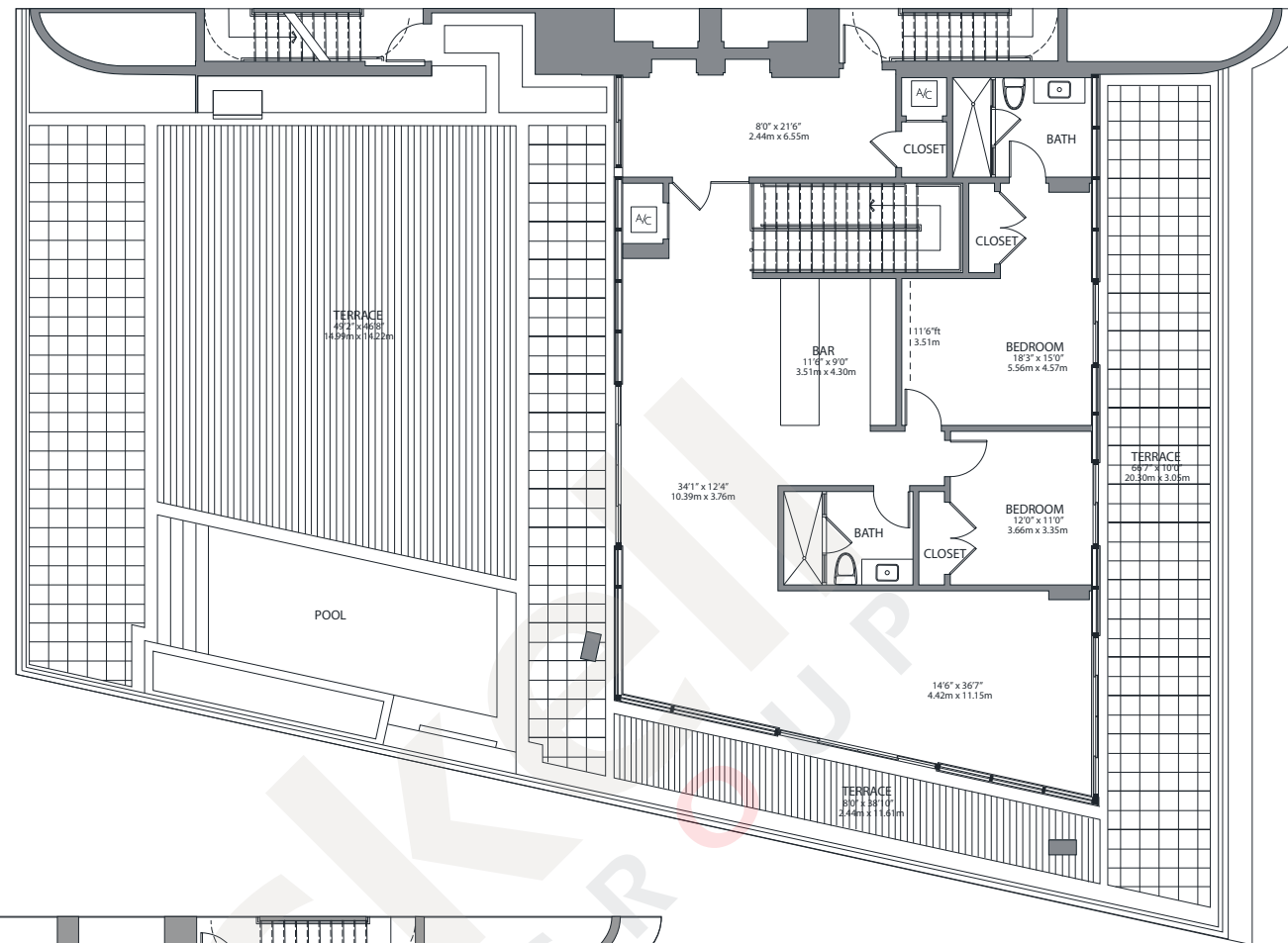
Oral representation cannot be relied upon as correctly stating representations of the developer. Pictures of homes and condos may not reflect the final products which may vary. Dimensions, specifications, improvements, rendering, plans, land uses, materials, amenities, prices, and availability are subject to change at the developer's discretion without notice.

Stated dimensions are approximate and measured to the exterior boundaries of the exterior walls and the centerline of interior demising walls which in fact vary from the dimensions that would be determined by using the description and definition of the "Unit" set forth in the Declaration (which generally only includes the interior airspace between the perimeter walls and excludes interior structural components).

PENTHOUSE Ar

6 Bedrooms · 7.5 Baths

	SQ FT	M ²
Interior	6,200	576.0
Balconies/Terraces	4,622	429.4
Total	10,822	1,005.4



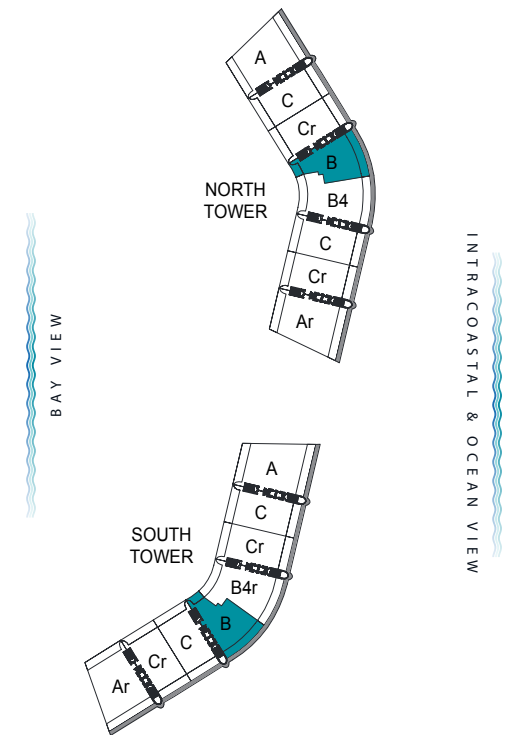
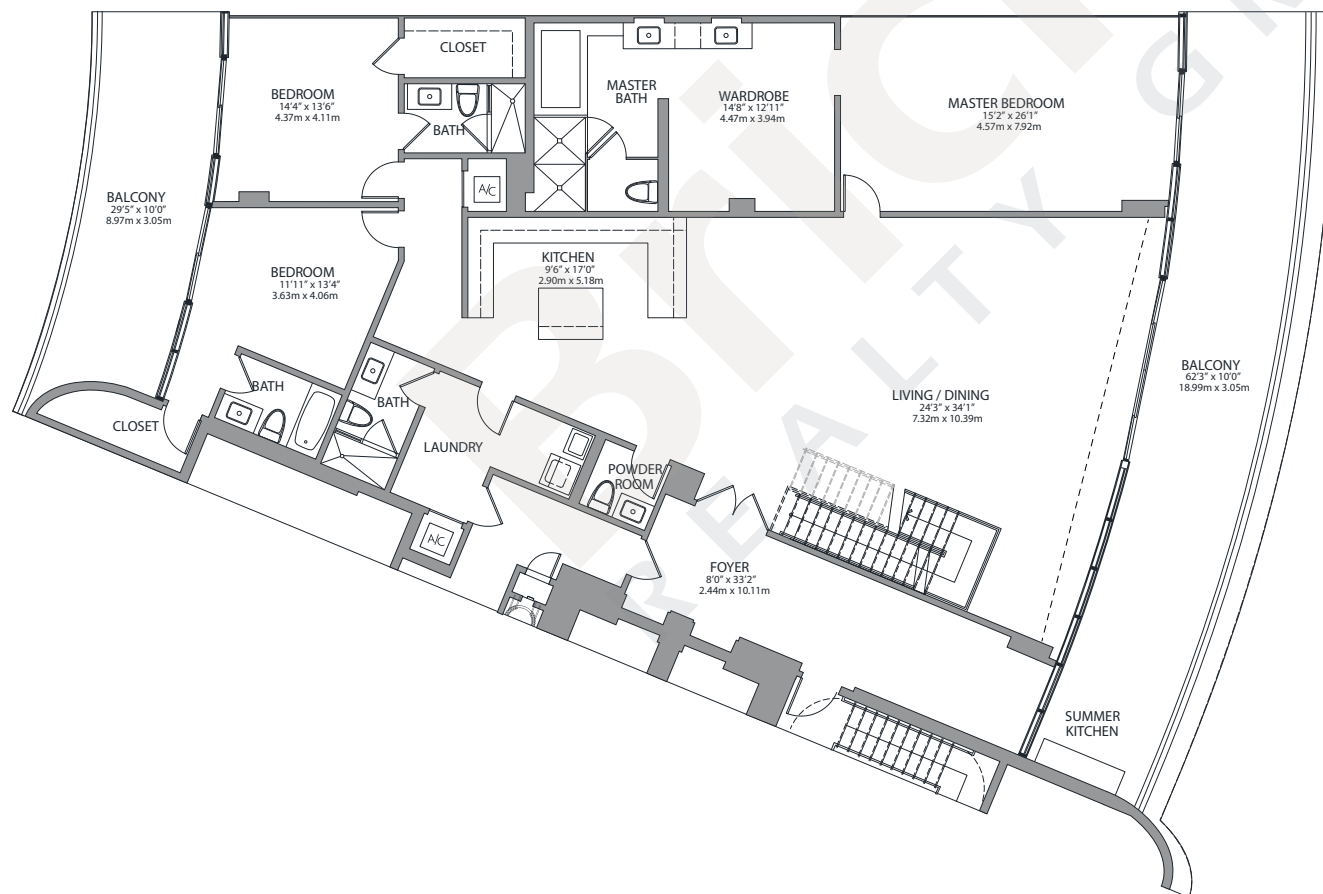
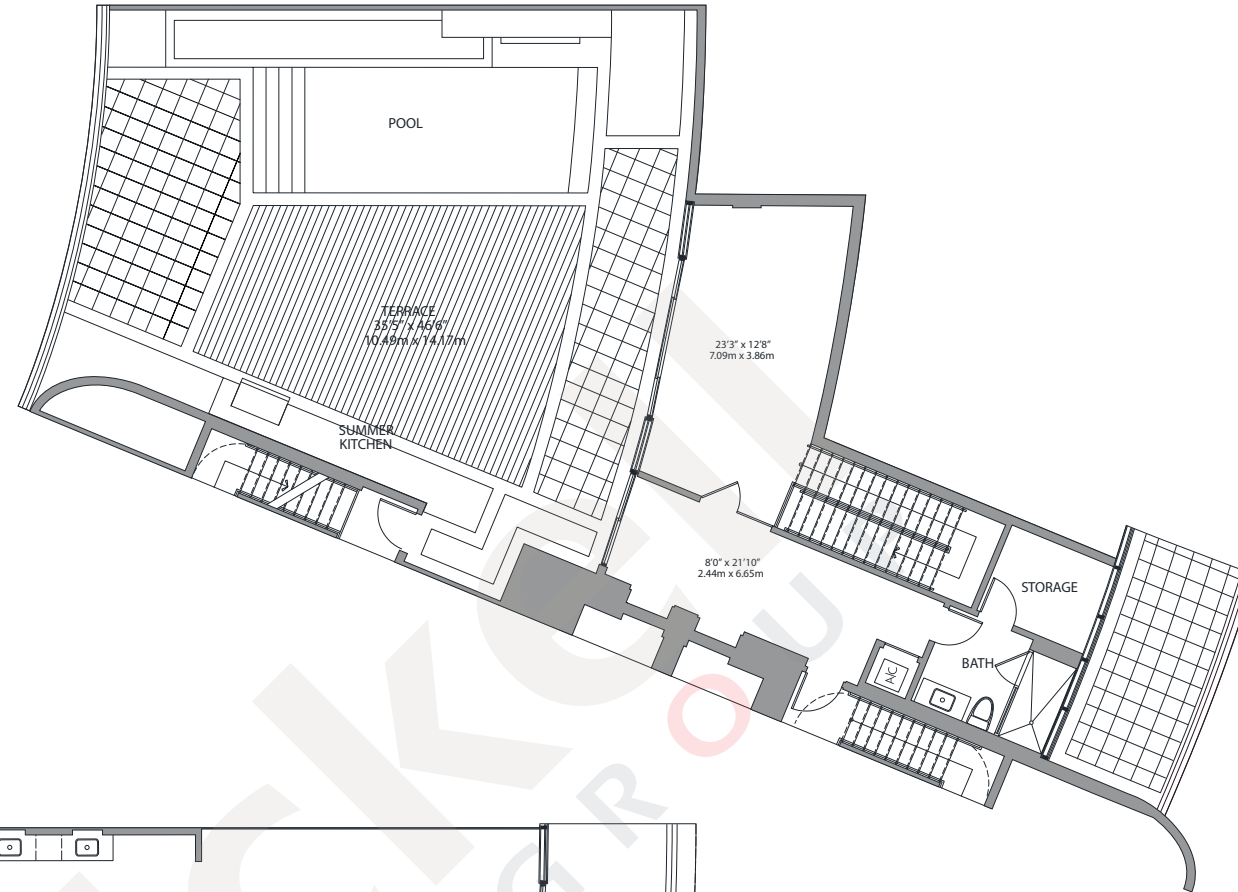
BAY VIEW

INTRACOASTAL & OCEAN VIEW

PENTHOUSE B

3 Bedrooms · 5.5 Baths

	SQ FT	M ²
Interior	4,238	393.7
Balconies/Terraces	2,633	244.6
Total	6,871	638.3



Brickell
REALTY GROUP

2071 NW 112th Avenue, Miami, FL 33172

www.brickell-realty.com/Prive.html

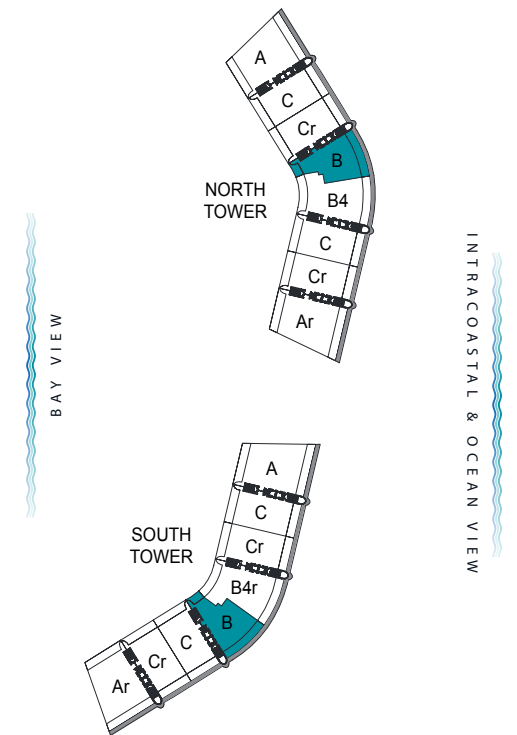
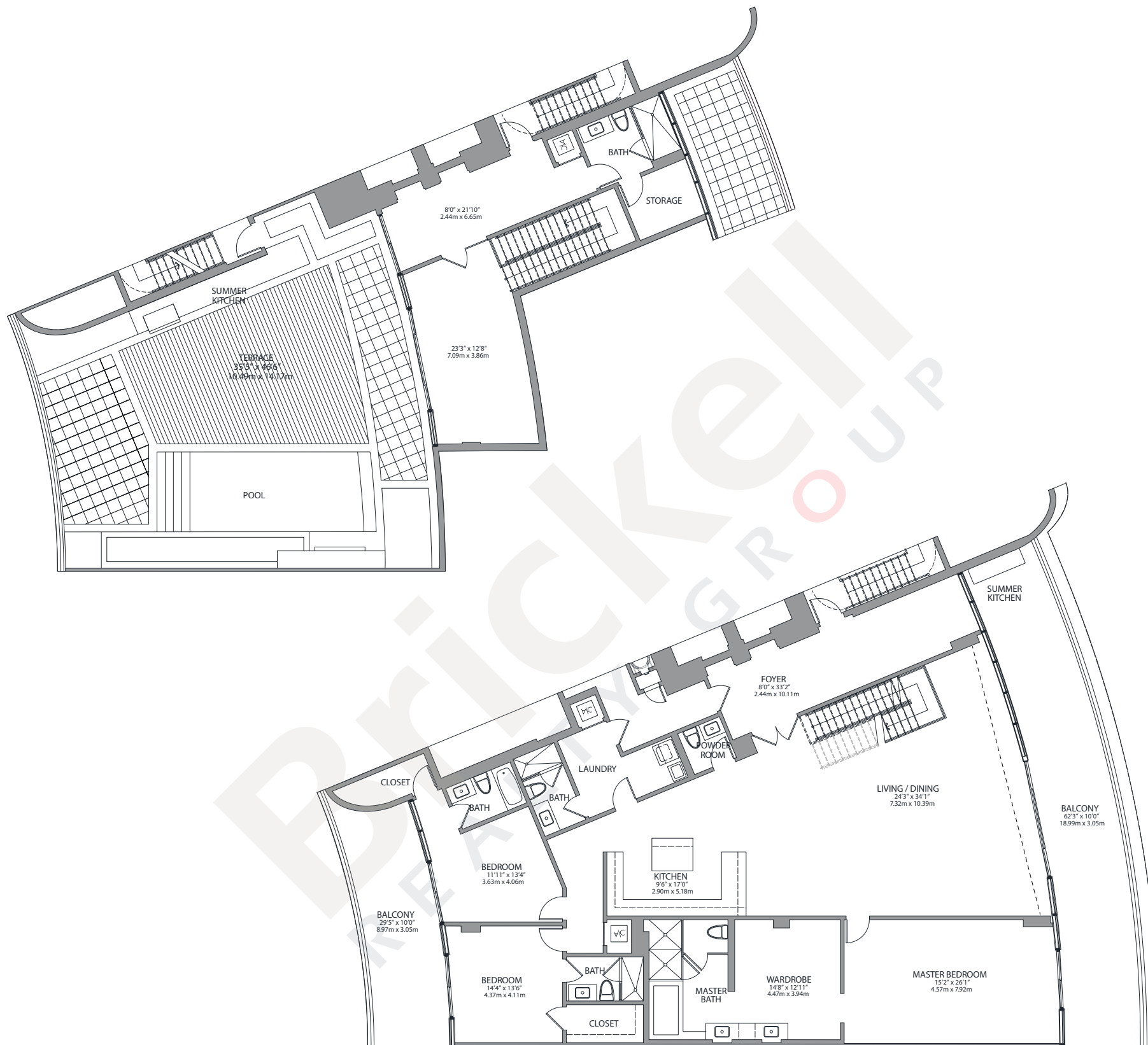
Oral representation cannot be relied upon as correctly stating representations of the developer. Pictures of homes and condos may not reflect the final products which may vary. Dimensions, specifications, improvements, rendering, plans, land uses, materials, amenities, prices, and availability are subject to change at the developer's discretion without notice.

Stated dimensions are approximate and measured to the exterior boundaries of the exterior walls and the centerline of interior demising walls which in fact vary from the dimensions that would be determined by using the description and definition of the "Unit" set forth in the Declaration (which generally only includes the interior airspace between the perimeter walls and excludes interior structural components).

PENTHOUSE Br

3 Bedrooms · 5.5 Baths

	SQ FT	M ²
Interior	4,238	393.7
Balconies/Terraces	2,633	244.6
Total	6,871	638.3



Brickell
REALTY GROUP

2071 NW 112th Avenue, Miami, FL 33172

www.brickell-realty.com/Prive.html

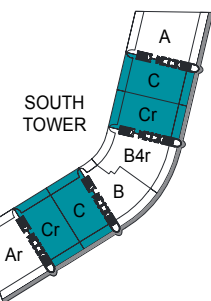
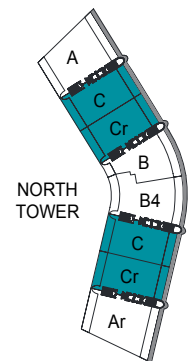
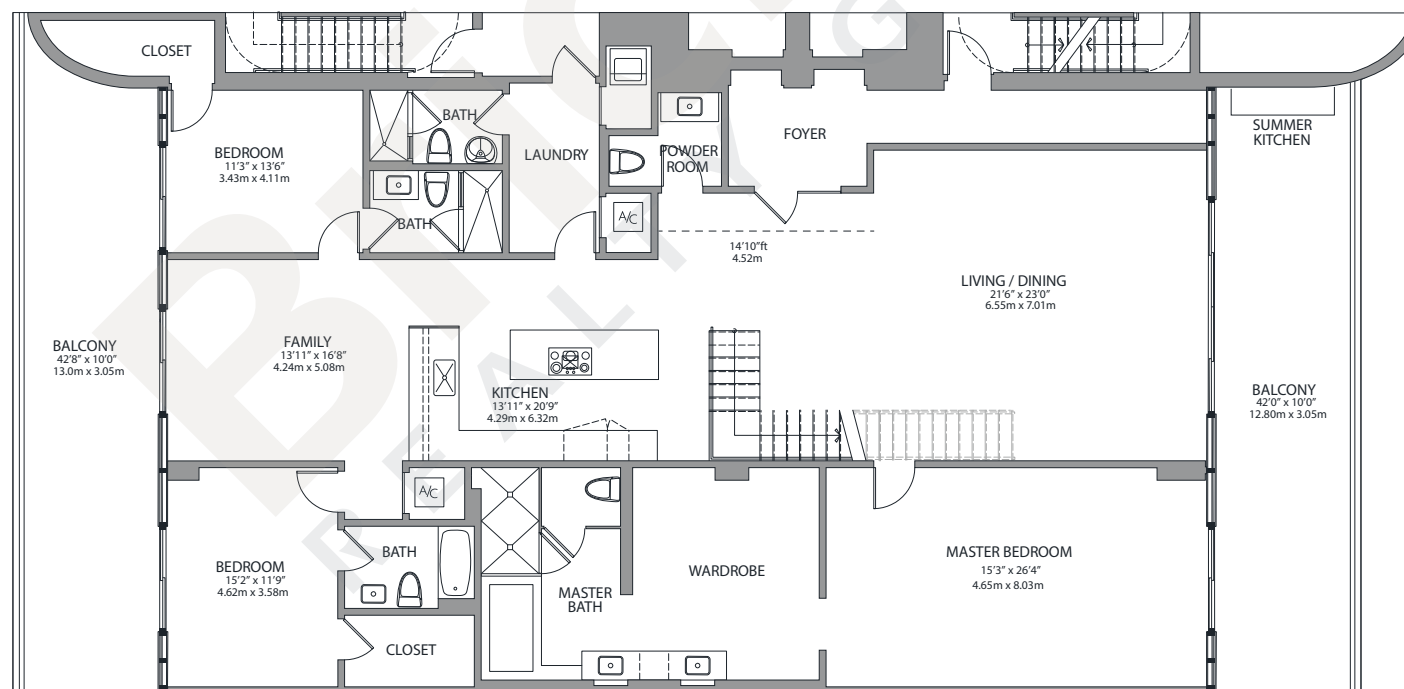
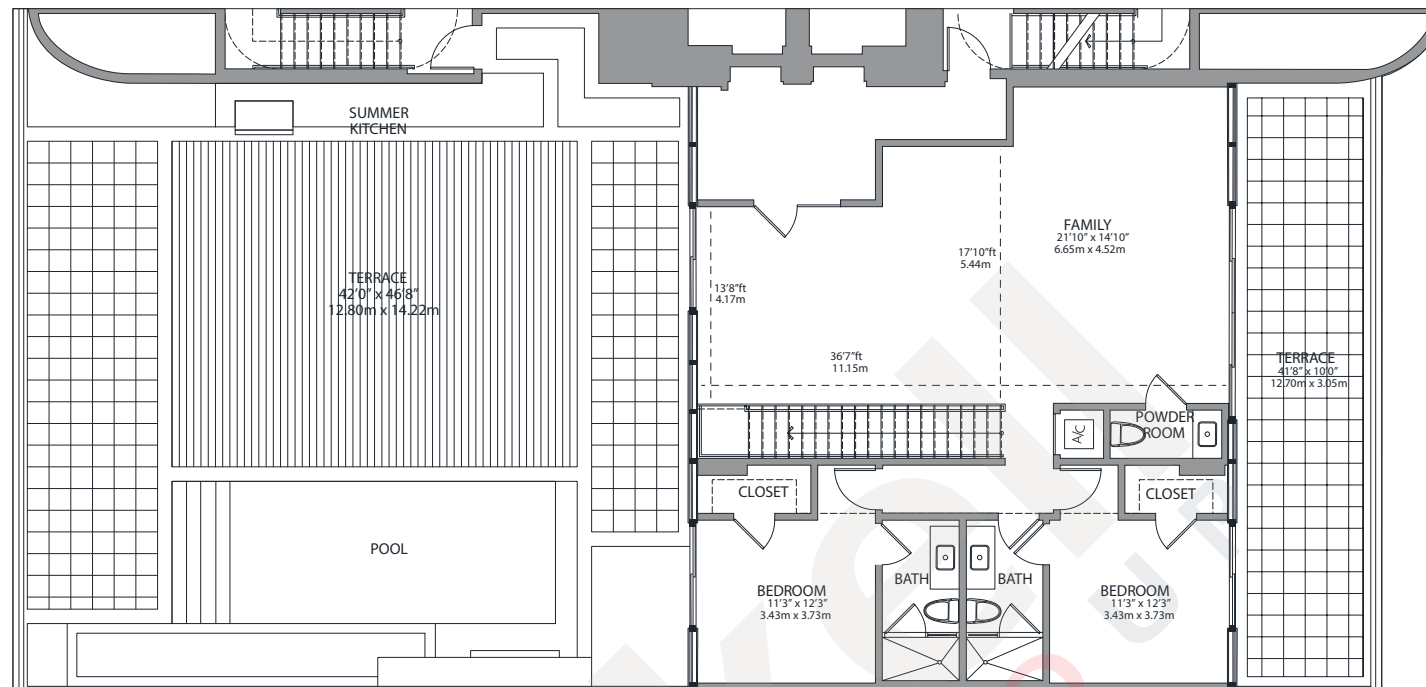
Oral representation cannot be relied upon as correctly stating representations of the developer. Pictures of homes and condos may not reflect the final products which may vary. Dimensions, specifications, improvements, rendering, plans, land uses, materials, amenities, prices, and availability are subject to change at the developer's discretion without notice.

Stated dimensions are approximate and measured to the exterior boundaries of the exterior walls and the centerline of interior demising walls which in fact vary from the dimensions that would be determined by using the description and definition of the "Unit" set forth in the Declaration (which generally only includes the interior airspace between the perimeter walls and excludes interior structural components).

PENTHOUSE C

5 Bedrooms · 6.5 Baths

	SQ FT	M ²
Interior	4,768	442.9
Balconies/Terraces	3,284	305.1
Total	8,052	748.0



BAY VIEW

INTRACOASTAL & OCEAN VIEW

Brickell REALTY GROUP

2071 NW 112th Avenue, Miami, FL 33172

www.brickell-realty.com/Prive.html

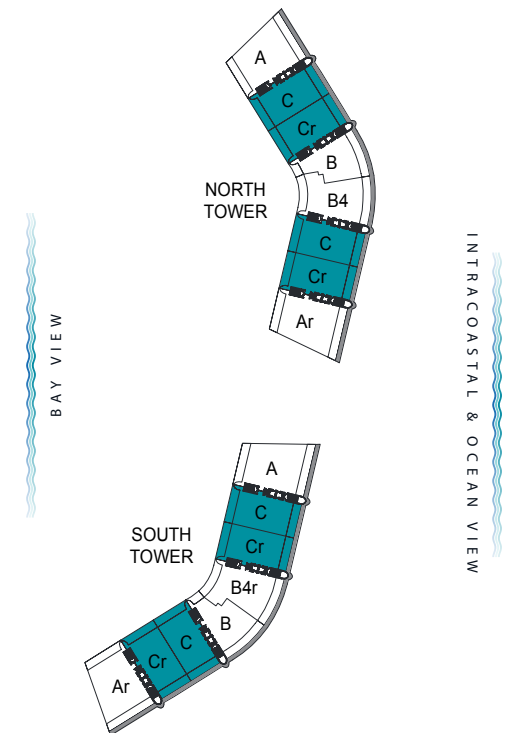
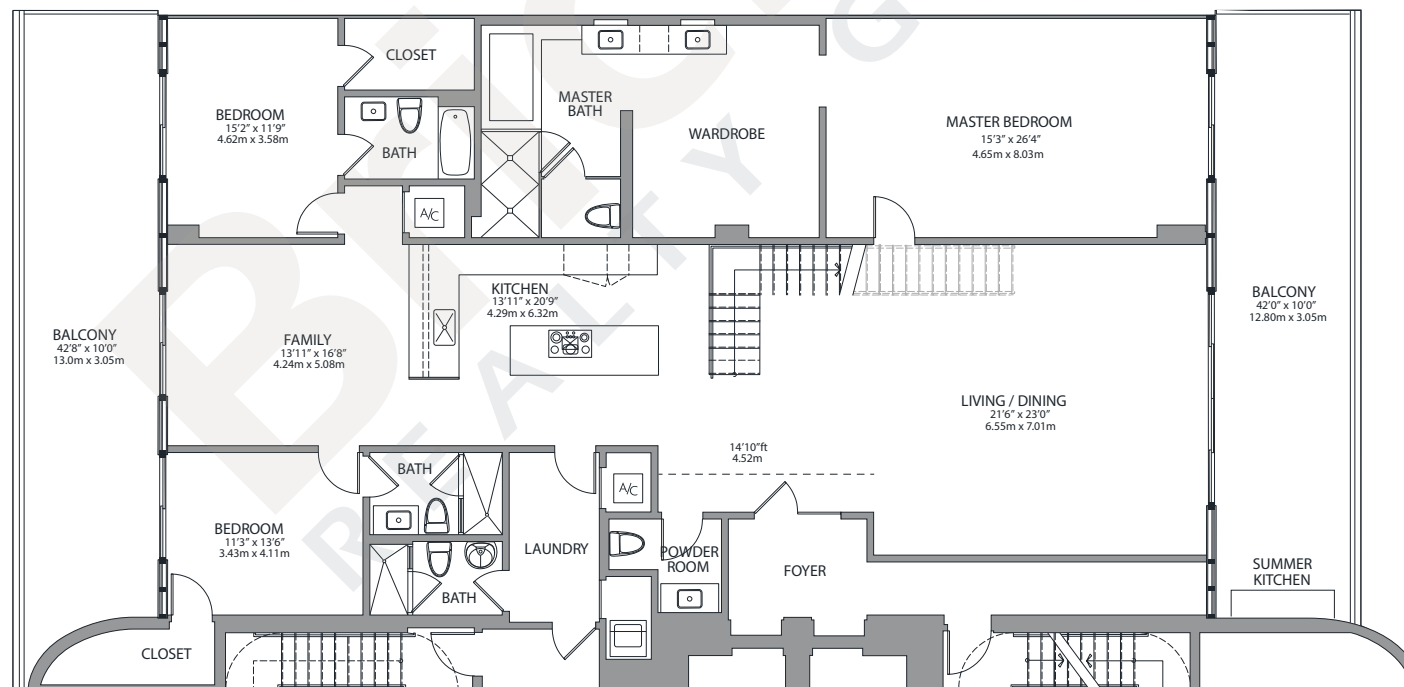
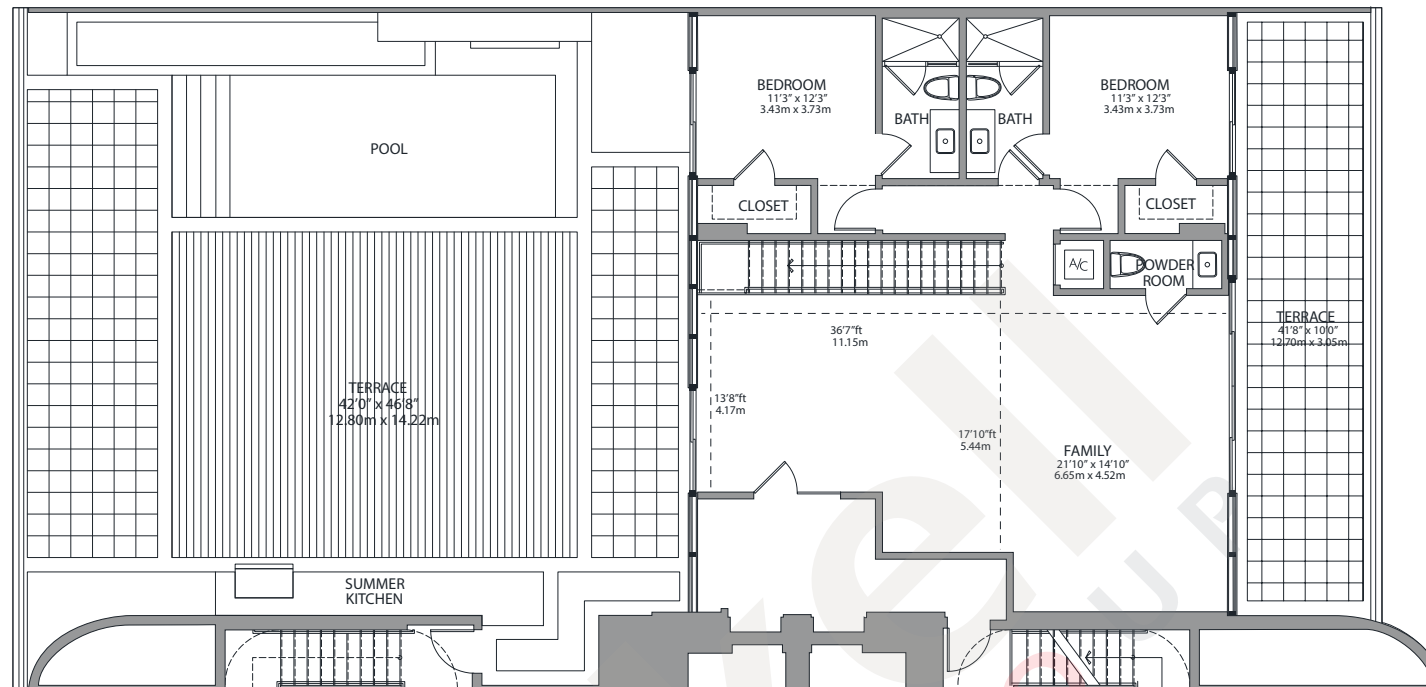
Oral representation cannot be relied upon as correctly stating representations of the developer. Pictures of homes and condos may not reflect the final products which may vary. Dimensions, specifications, improvements, rendering, plans, land uses, materials, amenities, prices, and availability are subject to change at the developer's discretion without notice.

Stated dimensions are approximate and measured to the exterior boundaries of the exterior walls and the centerline of interior demising walls which in fact vary from the dimensions that would be determined by using the description and definition of the "Unit" set forth in the Declaration (which generally only includes the interior airspace between the perimeter walls and excludes interior structural components).

PENTHOUSE Cr

5 Bedrooms · 6.5 Baths

	SQ FT	M ²
Interior	4,768	442.9
Balconies/Terraces	3,284	305.1
Total	8,052	748.0



Brickell REALTY GROUP

2071 NW 112th Avenue, Miami, FL 33172

www.brickell-realty.com/Prive.html

Oral representation cannot be relied upon as correctly stating representations of the developer. Pictures of homes and condos may not reflect the final products which may vary. Dimensions, specifications, improvements, rendering, plans, land uses, materials, amenities, prices, and availability are subject to change at the developer's discretion without notice.

Stated dimensions are approximate and measured to the exterior boundaries of the exterior walls and the centerline of interior demising walls which in fact vary from the dimensions that would be determined by using the description and definition of the "Unit" set forth in the Declaration (which generally only includes the interior airspace between the perimeter walls and excludes interior structural components).