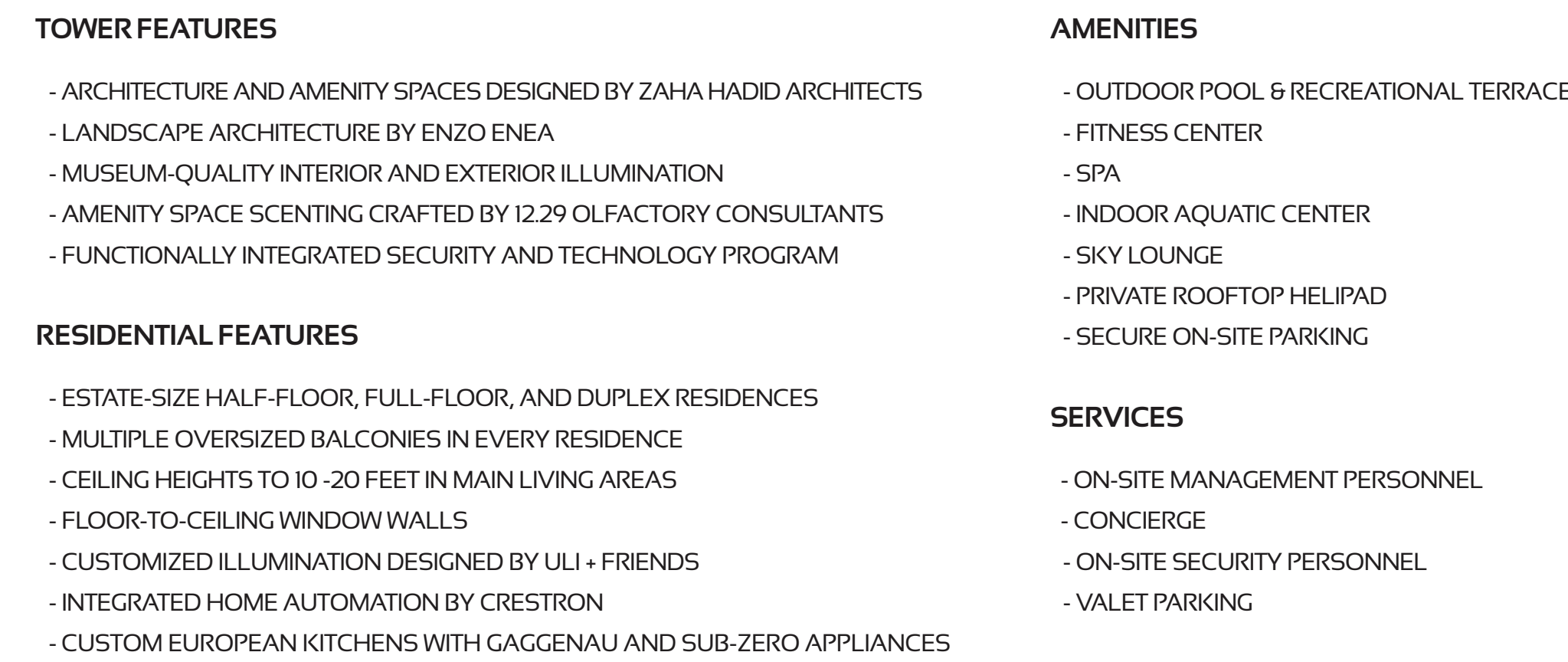
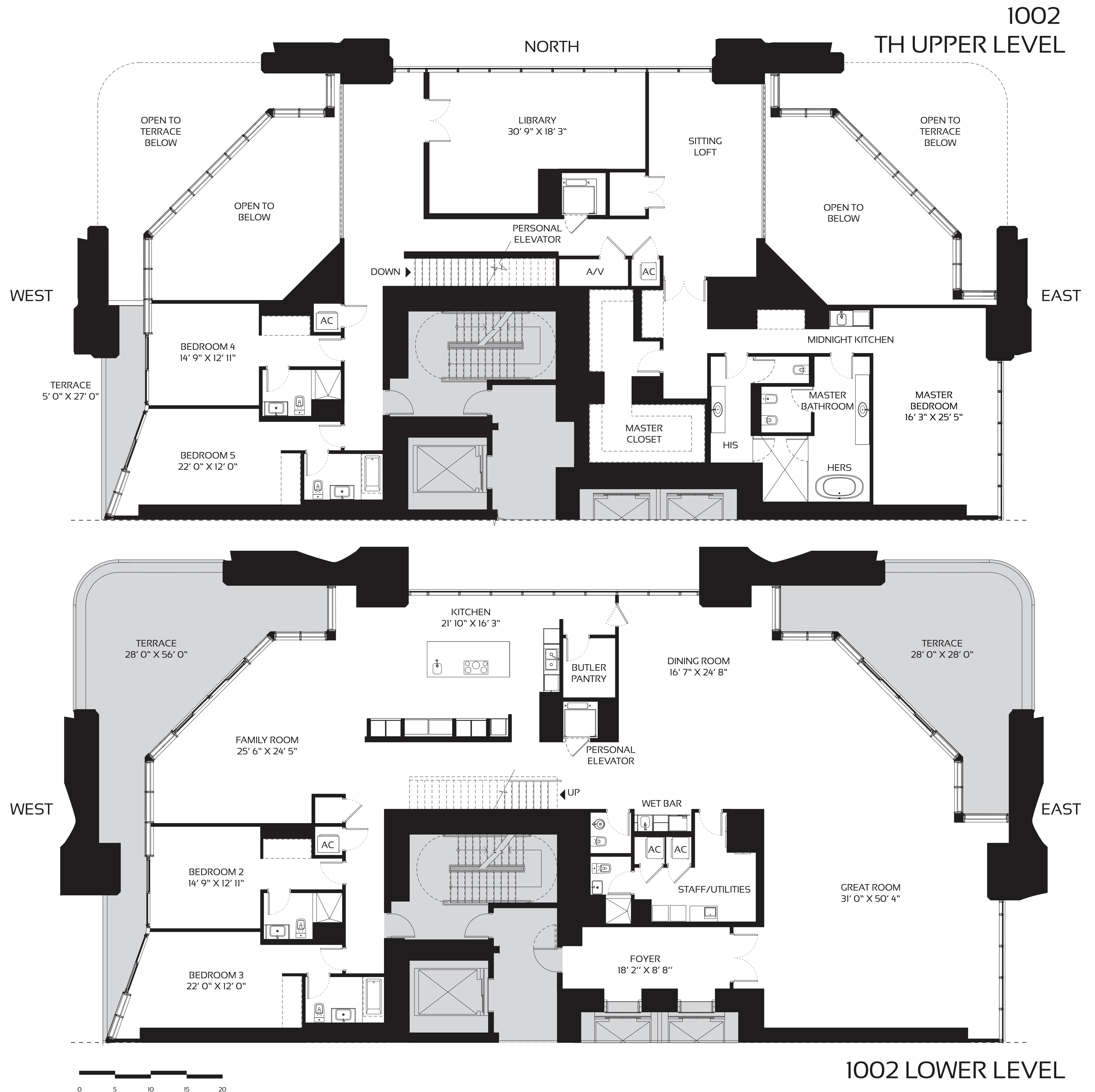


TOWNHOUSE RESIDENCES - LEVELS 10 - 14

TOTAL AREA: 9,493 SQFT 882 M²

[illegible]

1802

4 BEDROOM - 5.5 BATHROOM

WEST
TO MIAMI
INTERNATIONAL
AIRPORT

NORTH
TO DESIGN DISTRICT
WYNWOOD

I-95

11TH STREET

10TH STREET

9TH STREET

7TH STREET

NE 2 AVENUE

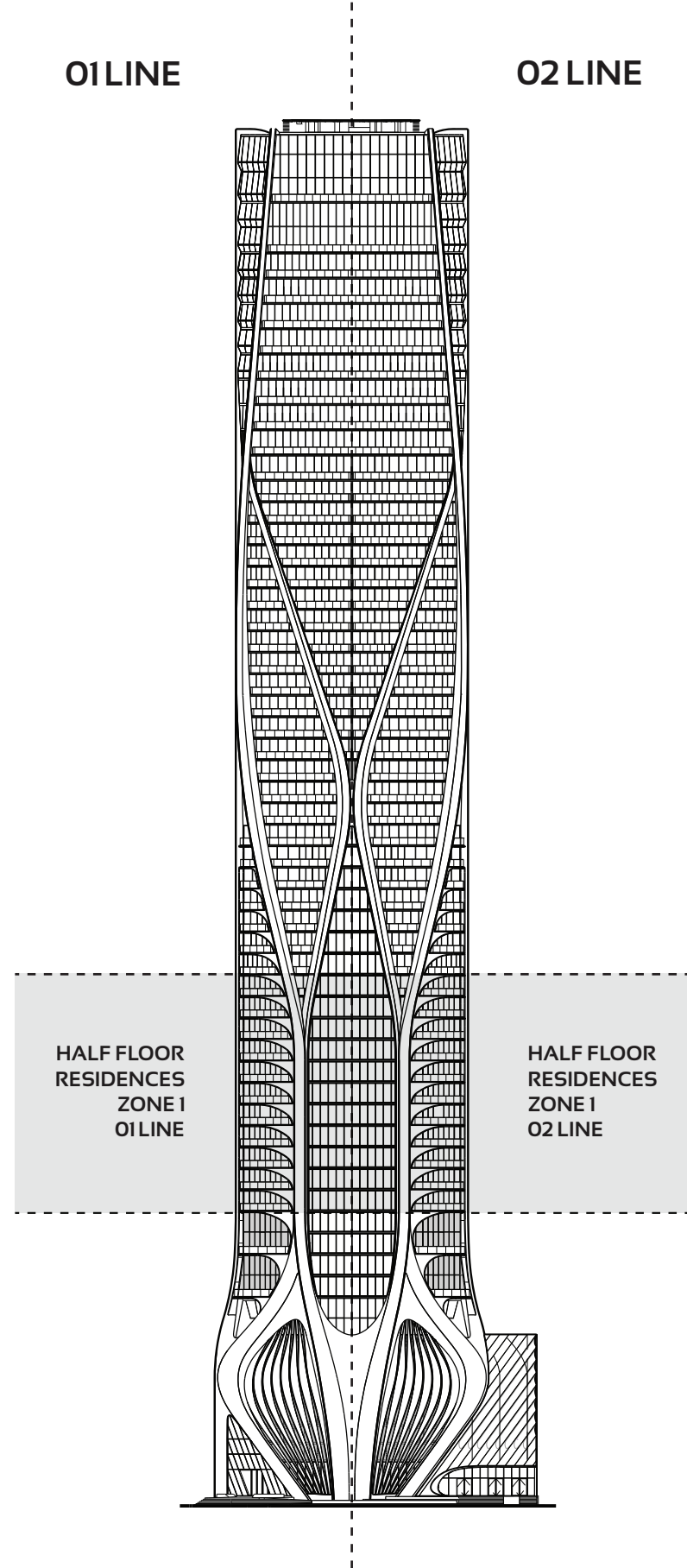
BISCAYNE BOULEVARD

MUSEUM PARK

BISCAYNE BAY

AMERICAN
AIRLINES ARENA
MIAMI HEAT

SOUTH
TO DOWNTOWN MIAMI
KEY BISCAYNE



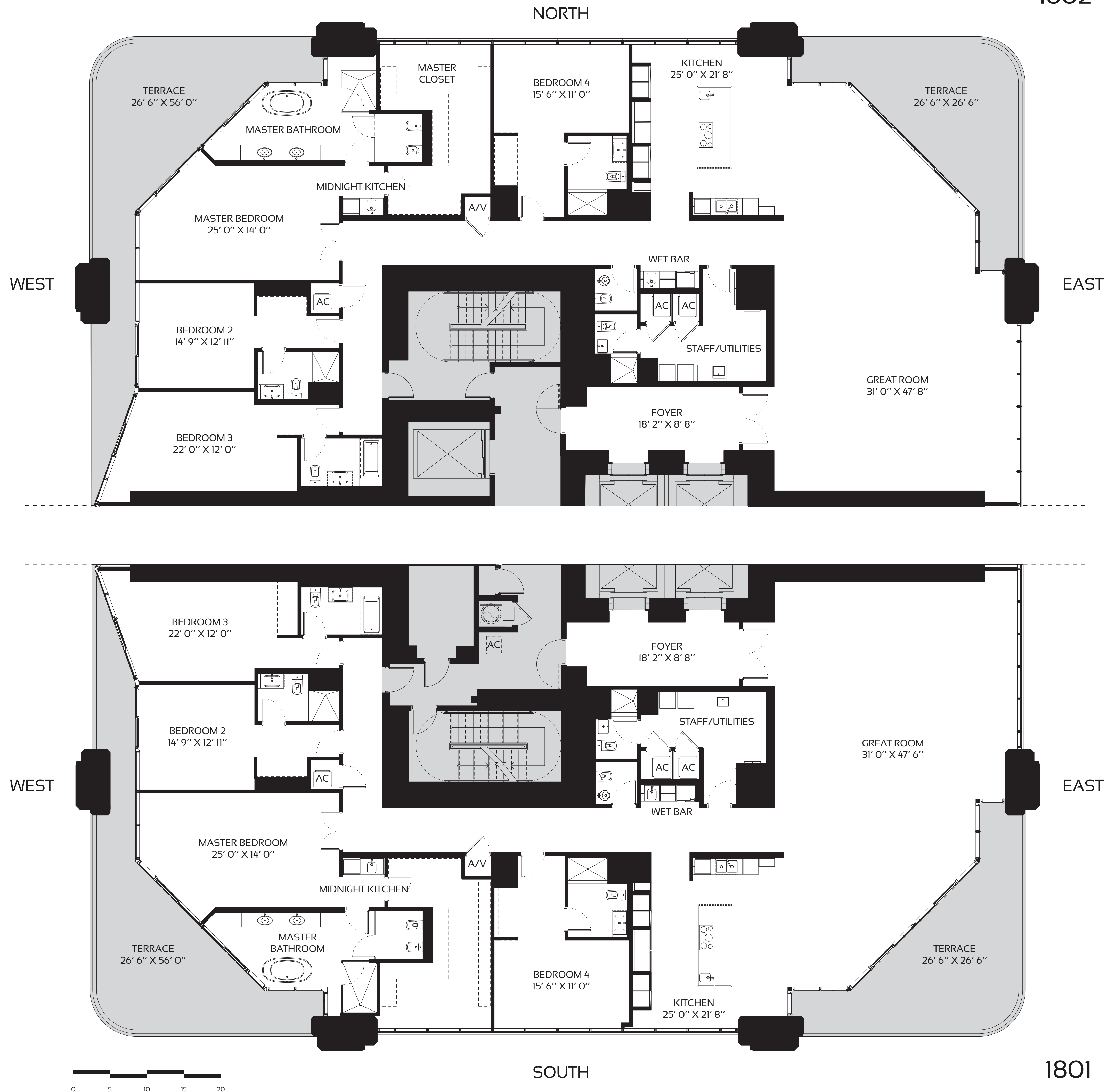
- ARCHITECTURE AND AMENITY SPACES DESIGNED BY ZAHA HADDID ARCHITECTS
- LANDSCAPE ARCHITECTURE BY ENZO ANGILERI
- MUSEUM-QUALITY INTERIOR AND EXTERIOR ILLUMINATION
- AMENITY SPACE SCENTING CRAFTED BY 12.29 OLFACTORY CONSULTANTS
- FUNCTIONALLY INTEGRATED SECURITY AND TECHNOLOGY PROGRAM

- ESTATE-SIZE HALF-FLOOR, FULL-FLOOR, AND DUPLEX RESIDENCES
- MULTIPLE OVERSIZED BALCONIES IN EVERY RESIDENCE
- CEILING HEIGHTS TO 10 FEET IN MAIN LIVING AREAS
- FLOOR-TO-CEILING WINDOW WALLS
- CUSTOMIZED ILLUMINATION DESIGNED BY ULI + FRIENDS
- INTEGRATED HOME AUTOMATION BY CRESTRON
- CUSTOM EUROPEAN KITCHENS WITH GAGGENAU AND SUB-ZERO APPLIANCES

- OUTDOOR POOL & RECREATIONAL TERRACE
- FITNESS CENTER
- SPA
- INDOOR AQUATIC CENTER
- SKY LOUNGE
- PRIVATE ROOFTOP HELIPAD
- SECURE ON-SITE PARKING

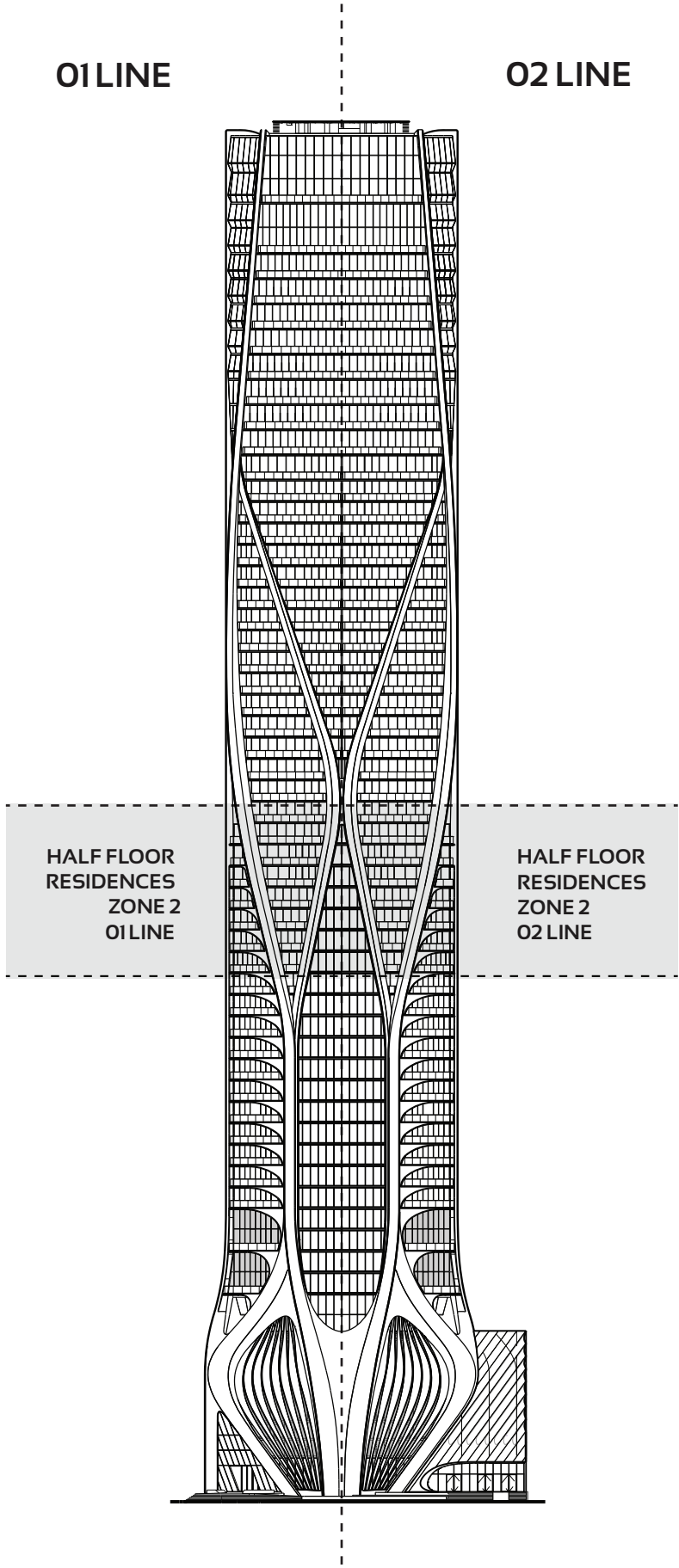
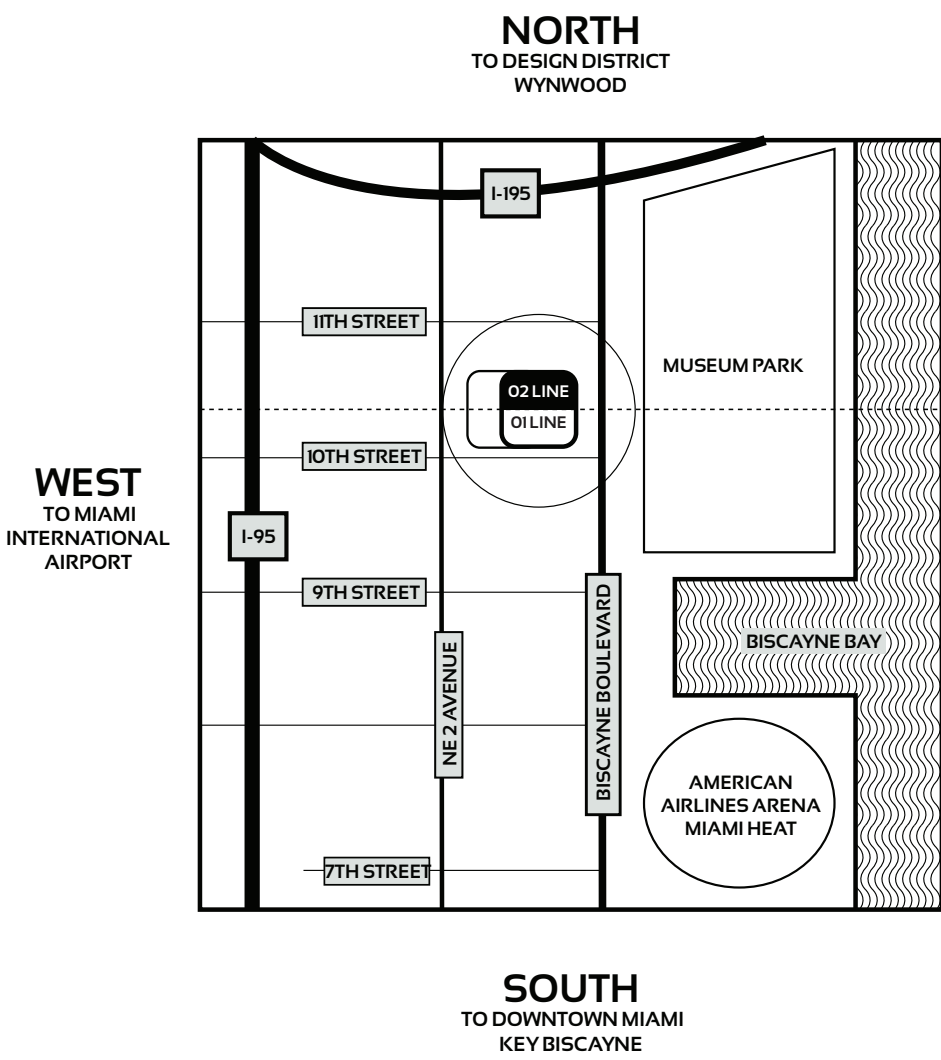
- ON-SITE MANAGEMENT PERSONNEL
- CONCIERGE
- ON-SITE SECURITY PERSONNEL
- VALET PARKING

ORAL REPRESENTATIONS CANNOT BE RELIED UPON AS CORRECTLY STATING REPRESENTATIONS OF THE DEVELOPER. FOR CORRECT REPRESENTATIONS, MAKE REFERENCE TO THIS BROCHURE AND TO THE DOCUMENTS REQUIRED BY SECTION 718.503, FLORIDA STATUTES, TO BE FURNISHED BY A DEVELOPER TO A BUYER OR LESSEE.

[illegible]

4 BEDROOM - 5.5 BATHROOM

INTERIORS:	4,727 SQFT	439.1 M ²
TERRACE:	780 SQFT	72.5 M ²
TOTAL AREA:	5,507 SQFT	511.6 M²



TOWER FEATURES

- ARCHITECTURE AND AMENITY SPACES DESIGNED BY ZAHA HADID ARCHITECTS
- LANDSCAPE ARCHITECTURE BY ENZO ENEA
- MUSEUM-QUALITY INTERIOR AND EXTERIOR ILLUMINATION
- AMENITY SPACE SCENTING CRAFTED BY 12.29 OLFACTORY CONSULTANTS
- FUNCTIONALLY INTEGRATED SECURITY AND TECHNOLOGY PROGRAM

RESIDENTIAL FEATURES

- ESTATE-SIZE HALF-FLOOR, FULL-FLOOR, AND DUPLEX RESIDENCES
- MULTIPLE OVERSIZED BALCONIES IN EVERY RESIDENCE
- CEILING HEIGHTS TO 10 FEET IN MAIN LIVING AREAS
- FLOOR-TO-CEILING WINDOW WALLS
- CUSTOMIZED ILLUMINATION DESIGNED BY ULI + FRIENDS
- INTEGRATED HOME AUTOMATION BY CRESTRON
- CUSTOM EUROPEAN KITCHENS WITH GAGGENAU AND SUB-ZERO APPLIANCES

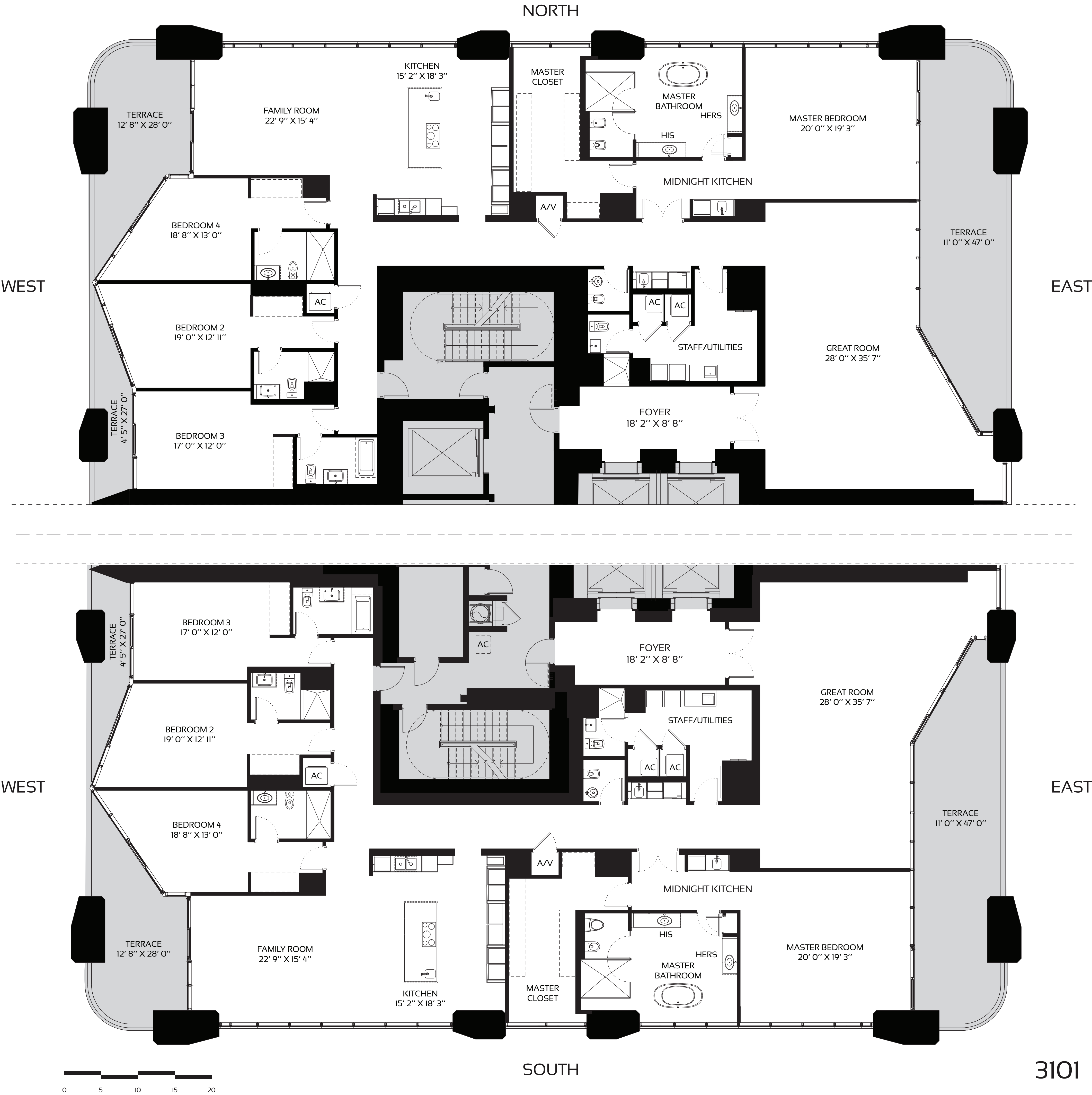
AMENITIES

- OUTDOOR POOL & RECREATIONAL TERRACE
- FITNESS CENTER
- SPA
- INDOOR AQUATIC CENTER
- SKY LOUNGE
- PRIVATE ROOFTOP HELIPAD
- SECURE ON-SITE PARKING

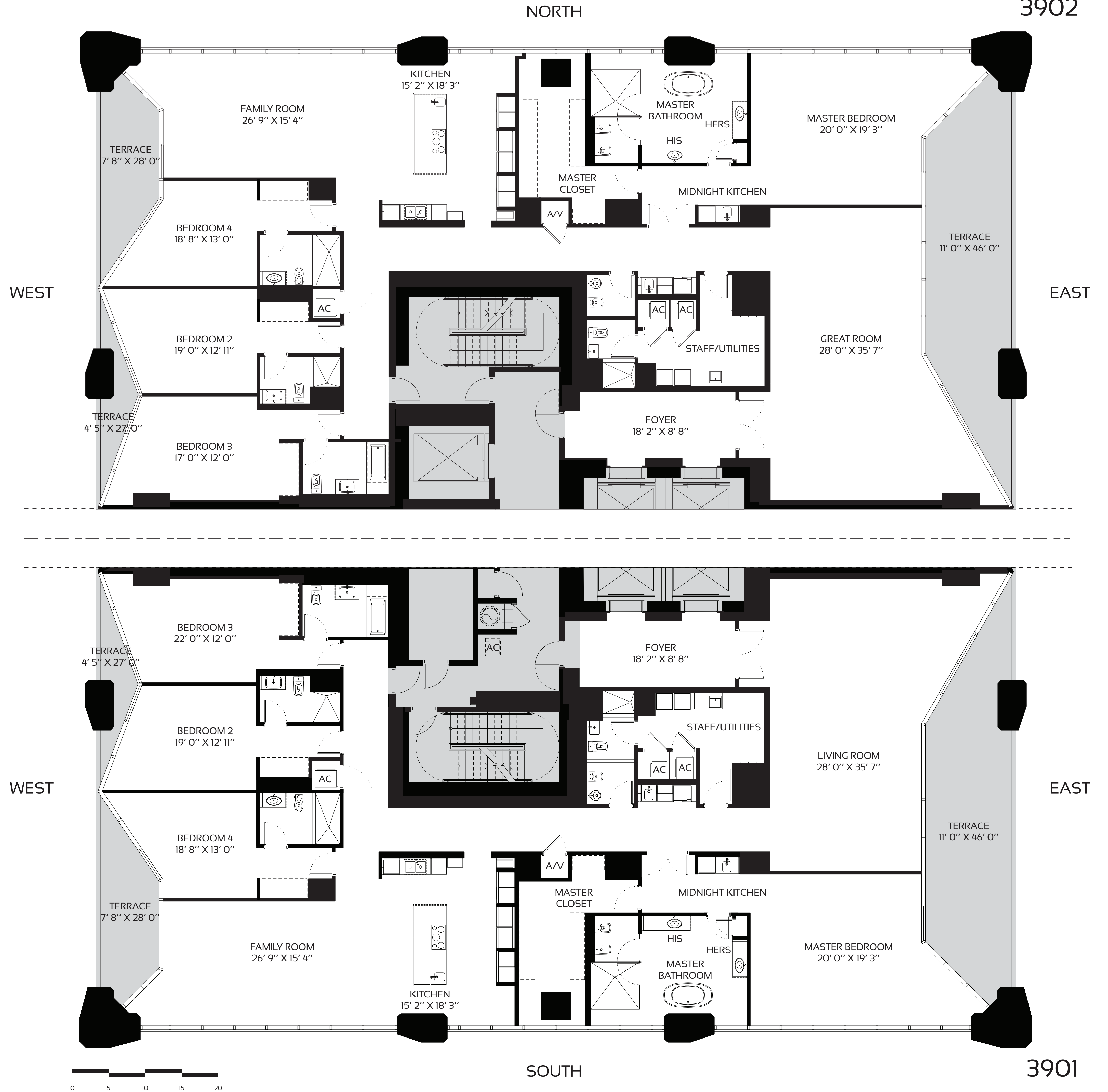
SERVICES

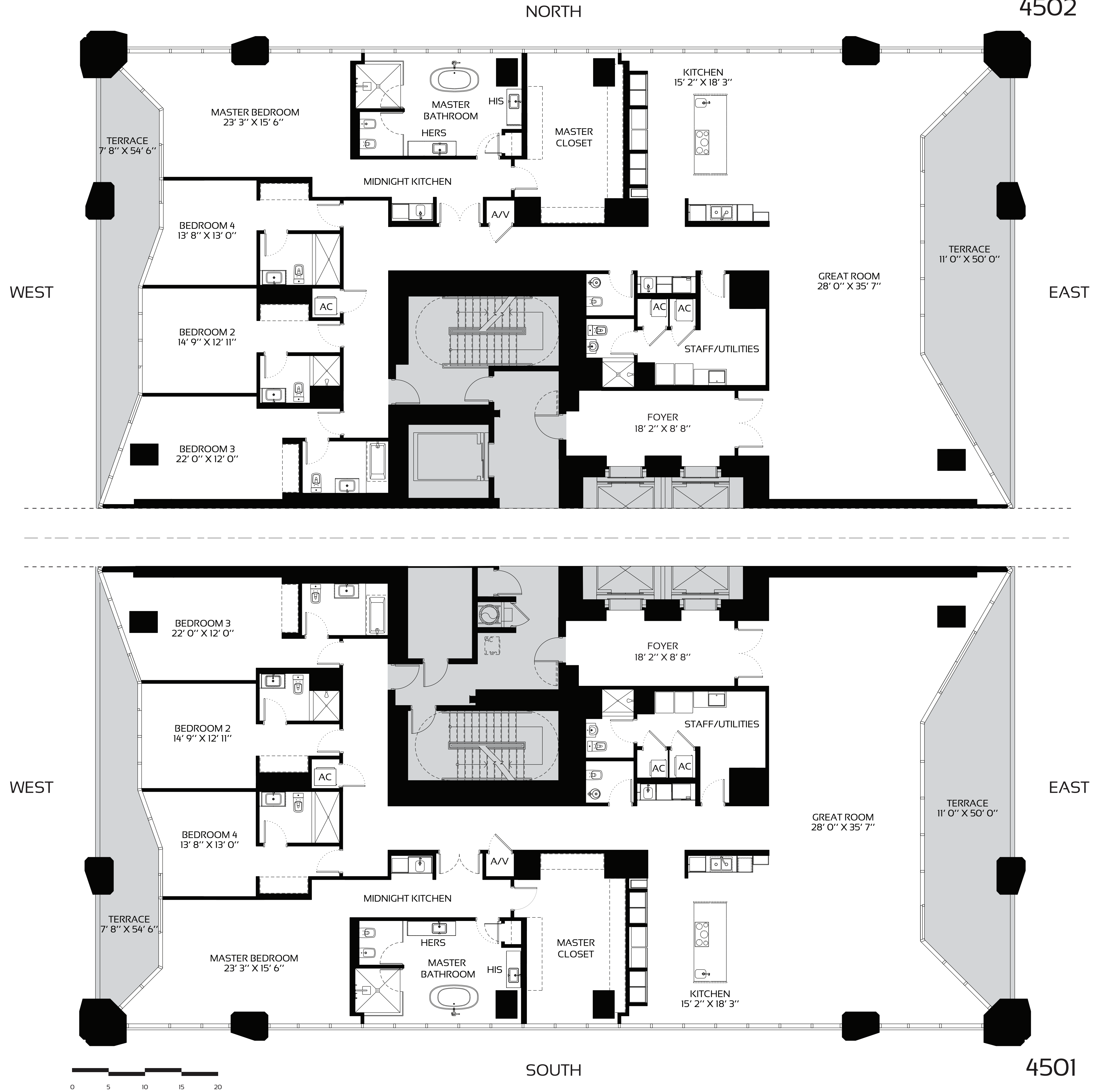
- ON-SITE MANAGEMENT PERSONNEL
- CONCIERGE
- ON-SITE SECURITY PERSONNEL
- VALET PARKING

ORAL REPRESENTATIONS CANNOT BE RELIED UPON AS CORRECTLY STATING REPRESENTATIONS OF THE DEVELOPER. FOR CORRECT REPRESENTATIONS, MAKE REFERENCE TO THIS BROCHURE AND TO THE DOCUMENTS REQUIRED BY SECTION 718.503, FLORIDA STATUTES, TO BE FURNISHED BY A DEVELOPER TO A BUYER OR LESSEE.

[illegible]

HALF FLOOR RESIDENCES - ZONE 3 - TYPE A - LEVELS 34-49





FULL FLOOR PENTHOUSES - ZONE 4 - LEVELS 50-57

01

FULL FLOOR PENTHOUSES

FULL FLOOR PENTHOUSES

This is a detailed architectural floor plan for a 5101 sq ft house. The layout is oriented with North at the top and South at the bottom. The house features five bedrooms, three full bathrooms, a master bathroom, a media room, a great room, a family room, a kitchen, a dining area, a butler pantry, a staff/laundry room, a foyer, and a large terrace. The plan includes numerous closets, including a linen closet, and several wet bars. The overall design is modern and spacious, with a large central area for living and dining.

Room Details:

- Master Bedroom:** 25' 2" x 27' 6"
- Master Bathroom:** 30' 8" x 16' 2"
- Bedroom 2:** 20' 8" x 17' 5"
- Bedroom 3:** 22' 0" x 18' 0"
- Bedroom 4:** 22' 0" x 17' 0"
- Bedroom 5:** 22' 0" x 17' 0"
- Great Room:** 28' 0" x 86' 0"
- Family Room:** 24' 2" x 39' 0"
- Kitchen:** 26' 5" x 21' 9"
- Dining:** 19' 8" x 19' 8"
- Butler Pantry:** (Adjacent to Dining)
- Staff/Laundry:** 21' 8" x 13' 6"
- Media Room:** 22' 0" x 19' 6"
- Foyer:** 18' 2" x 8' 8"
- AC Room:** (Two locations)
- HIS:** (Two locations)
- HERS:** (Two locations)
- Wet Bar:** (Three locations)
- Midnight Kitchen:** (Adjacent to Media Room)
- Terrace:** 12' 0" x 100' 0" (Main), 7' 0" x 32' 4" (Four smaller terraces)

Scale: 0 to 20 feet.

Orientation: NORTH, SOUTH, EAST.