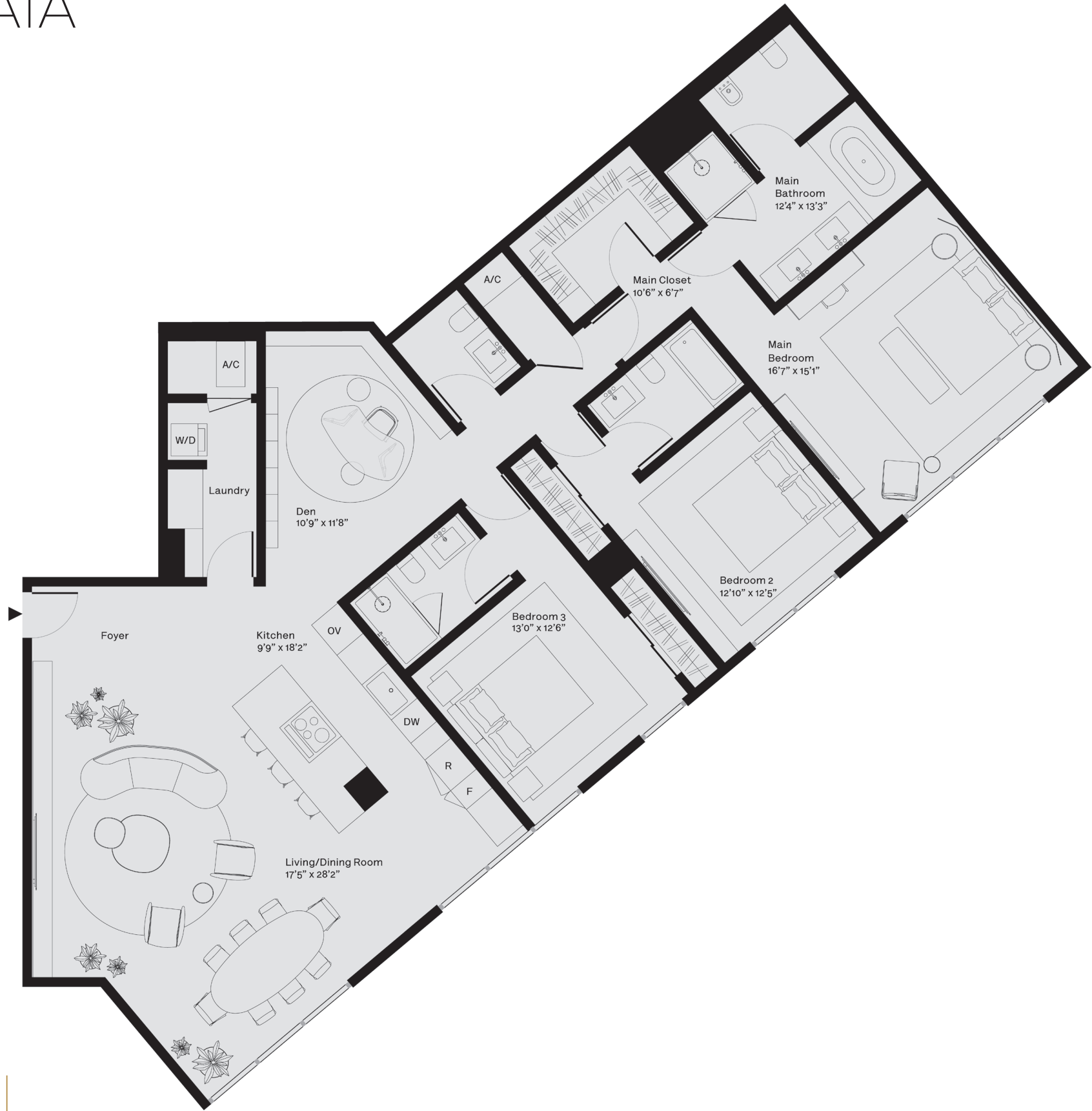


03 BAIA



3 BEDROOMS
3.5 BATHROOMS
WATER VIEW
DEN

INDOOR:
2,333 SF / 216 SM

TOTAL:
2,333 SF / 216 SM

OVERVIEW

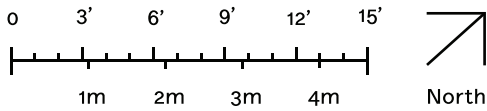
- Number of Residences: 41
- Number of Stories: 7 floors + parking
- Unit Mix: 2-4 bedrooms residences

BUILDING
FEATURES

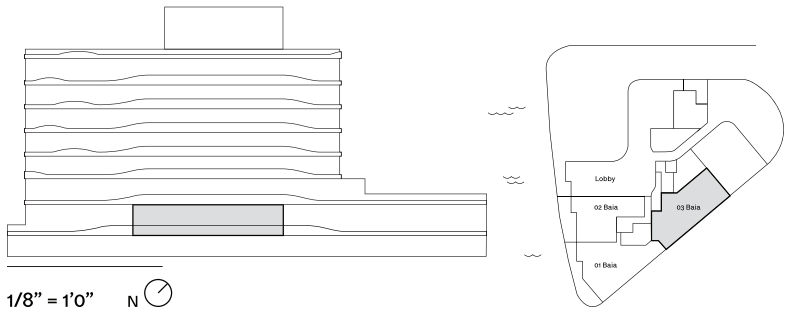
- Expansive waterfront views
- Private marina
- Gym and spa
- Rooftop pool
- Personalized services, security and advanced technology

RESIDENCE FEATURES

- Floor-to-ceiling, impact-resistant sliding glass doors and windows
- Spacious tiled terraces or private gardens for most units
- Private and semi-private residential elevators
- Open floor layouts and up to 9-foot grand ceiling height
- Fully-accessorized Snaidero kitchens with top-of-the-line Miele appliances
- Bathrooms with Italian marble and wood cabinetry
- Exquisite Italian flooring throughout
- Energy-efficient air conditioning and heating system with ultra-quiet technology
- Air and water filtration system



STATED DIMENSIONS AND SQUARE FOOTAGES ARE MEASURED TO THE EXTERIOR BOUNDARIES OF THE EXTERIOR WALLS AND THE CENTERLINE OF INTERIOR DEMISING WALLS AND IN FACT VARIES FROM THE SQUARE FOOTAGE AND DIMENSIONS THAT WOULD BE DETERMINED BY USING THE DESCRIPTION AND DEFINITION OF THE "UNIT" SET FORTH IN THE DECLARATION (WHICH GENERALLY ONLY INCLUDES THE INTERIOR AIRSPACE BETWEEN THE PERIMETER WALLS AND EXCLUDES ALL INTERIOR STRUCTURAL COMPONENTS AND OTHER COMMON ELEMENTS). THIS METHOD IS GENERALLY USED IN SALES MATERIALS AND IS PROVIDED TO ALLOW A PROSPECTIVE BUYER TO COMPARE THE UNITS WITH UNITS IN OTHER CONDOMINIUM PROJECTS THAT UTILIZE THE SAME METHOD. FOR THE SQUARE FOOTAGE OF THE UNIT, CALCULATED IN ACCORDANCE WITH THE DEFINITION SET FORTH IN THE DECLARATION, WHICH WILL BE SMALLER THAN STATED ABOVE. SEE THE DECLARATION. ALL DIMENSIONS ARE ESTIMATES WHICH WILL VARY WITH ACTUAL CONSTRUCTION, AND ALL FLOOR PLANS, SPECIFICATIONS AND OTHER DEVELOPMENT PLANS ARE SUBJECT TO CHANGE AND WILL NOT NECESSARILY ACCURATELY REFLECT THE FINAL PLANS AND SPECIFICATIONS FOR THE DEVELOPMENT. ALL DEPICTIONS OF FURNITURE, APPLIANCES, COUNTERS, SOFFITS, FLOOR COVERINGS AND OTHER MATTERS OF DETAIL, INCLUDING, WITHOUT LIMITATION, ITEMS OF FINISH AND DECORATION, ARE CONCEPTUAL ONLY AND ARE NOT NECESSARILY INCLUDED IN EACH UNIT. SAID ITEMS ARE ONLY INCLUDED IF AND TO THE EXTENT PROVIDED IN YOUR PURCHASE AGREEMENT. PLEASE NOTE THAT THE "TOTAL" AREA LISTED HEREON INCLUDES THE PROPOSED SQUARE FOOTAGE OF TERRACE, WHICH IS NOT PART OF THE BOUNDARIES OF THE UNIT AS SET FORTH ON THE DECLARATION. ORAL REPRESENTATIONS CANNOT BE RELIED UPON AS CORRECTLY STATING THE REPRESENTATIONS OF THE DEVELOPER. FOR CORRECT REPRESENTATIONS, MAKE REFERENCE TO THIS BROCHURE AND TO THE DOCUMENTS REQUIRED BY SECTION 718.503, FLORIDA STATUTES, TO BE FURNISHED BY A DEVELOPER TO A BUYER OR LESSEE.



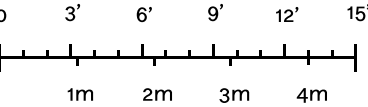
03 Sole

- 3 Bedrooms
- 4.5 Bathrooms
- Water Front View
- Terraces
- Private Elevator
- Service Entrance
- Den

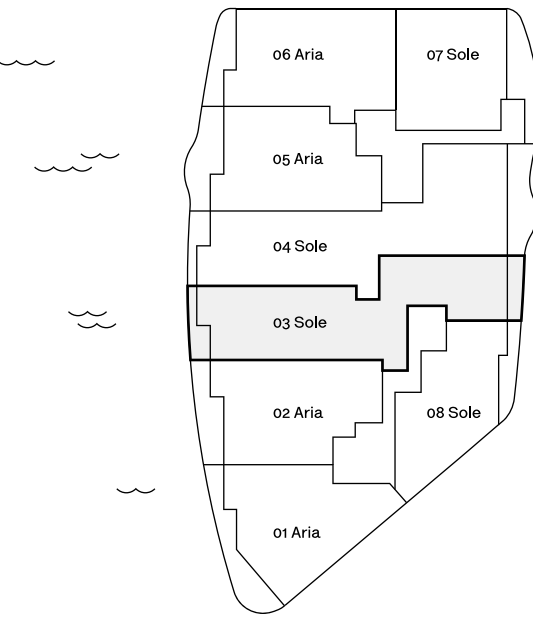
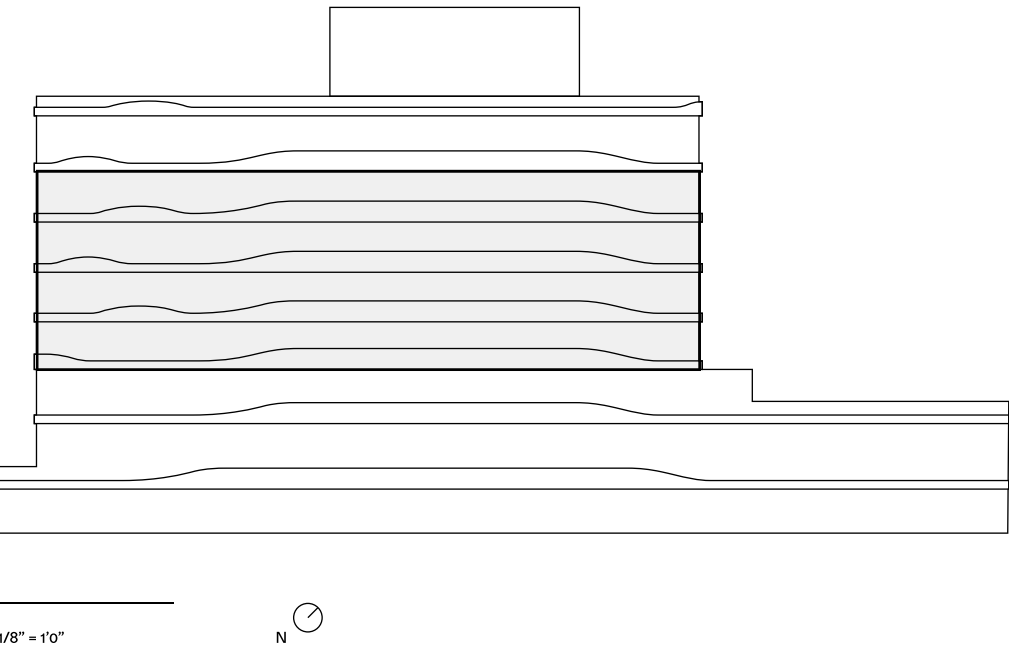
Indoor:
3,075 SF / 286 SM - 3,097 SF / 288 SM

Outdoor:
312 SF / 29 SM - 363 SF / 34 SM

Total:
3,387 SF / 315 SM - 3,460 SF / 322 SM



STATED DIMENSIONS AND SQUARE FOOTAGES ARE MEASURED TO THE EXTERIOR BOUNDARIES OF THE EXTERIOR WALLS AND THE CENTERLINE OF INTERIOR DEMISING WALLS AND IN FACT VARIES FROM THE SQUARE FOOTAGE AND DIMENSIONS THAT WOULD BE DETERMINED BY USING THE DESCRIPTION AND DEFINITION OF THE "UNIT" SET FORTH IN THE DECLARATION (WHICH GENERALLY ONLY INCLUDES THE INTERIOR AIRSPACE BETWEEN THE PERIMETER WALLS AND EXCLUDES ALL INTERIOR STRUCTURAL COMPONENTS AND OTHER COMMON ELEMENTS). THIS METHOD IS GENERALLY USED IN SALES MATERIALS AND IS PROVIDED TO ALLOW A PROSPECTIVE BUYER TO COMPARE THE UNITS WITH UNITS IN OTHER CONDOMINIUM PROJECTS THAT UTILIZE THE SAME METHOD. FOR THE SQUARE FOOTAGE OF THE UNIT, CALCULATED IN ACCORDANCE WITH THE DEFINITION SET FORTH IN THE DECLARATION, WHICH WILL BE SMALLER THAN STATED ABOVE, SEE THE DECLARATION. ALL DIMENSIONS ARE ESTIMATES WHICH WILL VARY WITH ACTUAL CONSTRUCTION, AND ALL FLOOR PLANS, SPECIFICATIONS AND OTHER DEVELOPMENT PLANS ARE SUBJECT TO CHANGE AND WILL NOT NECESSARILY ACCURATELY REFLECT THE FINAL PLANS AND SPECIFICATIONS FOR THE DEVELOPMENT. ALL DEPICTIONS OF FURNITURE, APPLIANCES, COUNTERS, SOFFITS, FLOOR COVERINGS AND OTHER MATTERS OF DETAIL, INCLUDING, WITHOUT LIMITATION, ITEMS OF FINISH AND DECORATION, ARE CONCEPTUAL ONLY AND ARE NOT NECESSARILY INCLUDED IN EACH UNIT. SAID ITEMS ARE ONLY INCLUDED IF AND TO THE EXTENT PROVIDED IN YOUR PURCHASE AGREEMENT. PLEASE NOTE THAT THE "TOTAL" AREA LISTED HEREON INCLUDES THE PROPOSED SQUARE FOOTAGE OF TERRACE, WHICH IS NOT PART OF THE BOUNDARIES OF THE UNIT AS SET FORTH ON THE DECLARATION. THE SIZE AND CONFIGURATION OF BALCONIES AND TERRACES VARIES SLIGHTLY THROUGHOUT THE BUILDING. THE BALCONY DEPICTED ABOVE IS A "TYPICAL" CONFIGURATION, BUT ACTUAL BALCONIES MAY BE SMALLER OR LARGER. FOR THE ACTUAL SIZE AND CONFIGURATION OF THE BALCONY FOR YOUR UNIT, SEE EXHIBIT "2" TO THE DECLARATION OF CONDOMINIUM. THE INTERIOR SIZE OF THE 03 SOLE UNITS VARY MODESTLY DEPENDING ON THE FLOOR LEVEL WHERE THE ACTUAL UNIT IS LOCATED. ACCORDINGLY, THE 03 SOLE UNITS DO NOT CONTAIN IDENTICAL SQUARE FOOTAGE. THE 03 SOLE UNIT DEPICTED HEREON REFLECTS THE "TYPICAL" CONFIGURATION, BUT THE ACTUAL SIZE MAY BE SMALLER OR LARGER. SIMILARLY, THE FLOOR PLANS MAY NOT ACCURATELY REFLECT COLUMN LOCATIONS, SHEAR WALL THICKNESS AND CONFIGURATIONS. FOR THE ACTUAL SIZE AND CONFIGURATION OF YOUR UNIT AND THE LOCATION AND CONFIGURATION OF COLUMNS FOR YOUR UNIT, SEE EXHIBIT "2" TO THE DECLARATION OF CONDOMINIUM. ORAL REPRESENTATIONS CANNOT BE RELIED UPON AS CORRECTLY STATING THE REPRESENTATIONS OF THE DEVELOPER. FOR CORRECT REPRESENTATIONS, MAKE REFERENCE TO THIS BROCHURE AND TO THE DOCUMENTS REQUIRED BY SECTION 718.503, FLORIDA STATUTES, TO BE FURNISHED BY A DEVELOPER TO A BUYER OR LESSEE.



04 SOLE

4 BEDROOMS
4.5 BATHROOMS
WATER FRONT VIEW
TERRACES
PRIVATE ELEVATOR
SERVICE ENTRANCE
DEN

INDOOR:
3,521 SF / 327 SM

OUTDOOR:
493 SF / 46 SM
552 SF / 51 SM

TOTAL:
4,014 SF / 373 SM
4,073 SF / 378 SM

OVERVIEW

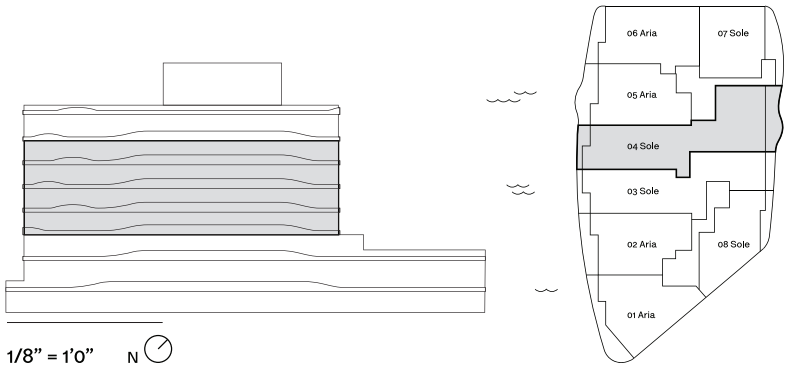
Number of Residences: 41
Number of Stories: 7 floors + parking
Unit Mix: 2-4 bedrooms residences

BUILDING
FEATURES

- Expansive waterfront views
- Private marina
- Gym and spa
- Rooftop pool
- Personalized services, security and advanced technology

RESIDENCE FEATURES

- Floor-to-ceiling, impact-resistant sliding glass doors and windows
- Spacious tiled terraces or private gardens for most units
- Private and semi-private residential elevators
- Open floor layouts and up to 9-foot grand ceiling height
- Fully-accessorized Snaidero kitchens with top-of-the-line Miele appliances
- Bathrooms with Italian marble and wood cabinetry
- Exquisite Italian flooring throughout
- Energy-efficient air conditioning and heating system with ultra-quiet technology
- Air and water filtration system



PH 2 VENTO

3 BEDROOMS
4.5 BATHROOMS
WATER FRONT VIEW
TERRACES
PRIVATE ELEVATOR
SERVICE ENTRANCE
DEN
OFFICE
WINE CELLAR

INDOOR:
4,004 SF / 372 SM

OUTDOOR:
414 SF / 38 SM

TOTAL:
4,418 SF / 410 SM

OVERVIEW

Number of Residences: 41
Number of Stories: 7 floors + parking
Unit Mix: 2-4 bedrooms residences

BUILDING FEATURES

Expansive waterfront views
Private marina
Gym and spa
Rooftop pool
Personalized services, security and advanced technology

RESIDENCE FEATURES

Floor-to-ceiling, impact-resistant sliding glass doors and windows
Spacious tiled terraces or private gardens for most units
Private and semi-private residential elevators
Open floor layouts and up to 9-foot grand ceiling height
Fully-accessorized Snaidero kitchens with top-of-the-line Miele appliances
Bathrooms with Italian marble and wood cabinetry
Exquisite Italian flooring throughout
Energy-efficient air conditioning and heating system with ultra-quiet technology
Air and water filtration system

