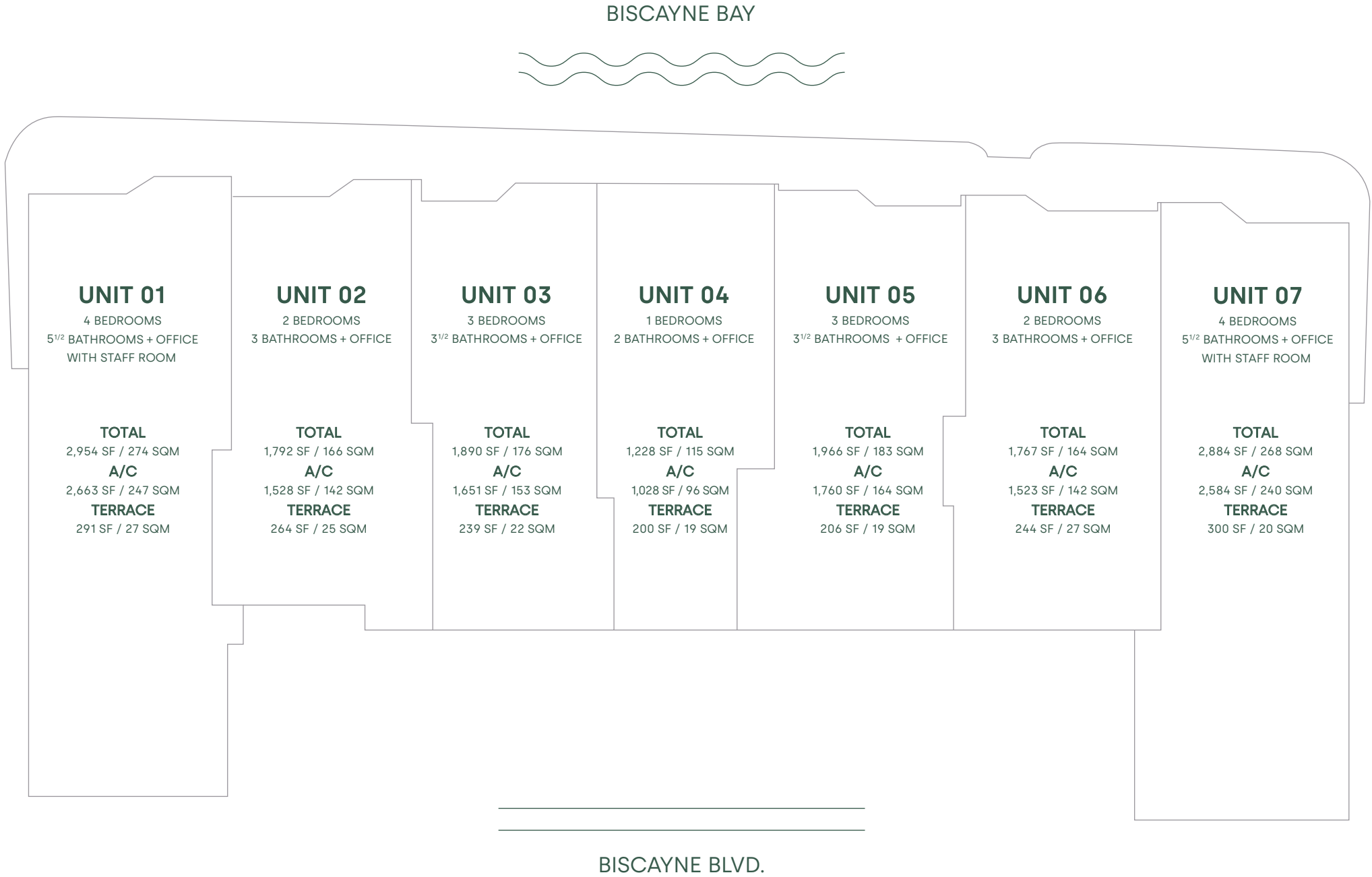





Panoramic and Skyview Residences Floorplans

DISCOVER

Panoramic and Skyview Residences Floorplans



 ORAL REPRESENTATIONS CANNOT BE RELIED UPON AS CORRECTLY STATING THE REPRESENTATIONS OF THE DEVELOPER. FOR CORRECT REPRESENTATIONS, MAKE REFERENCE TO THIS BROCHURE AND TO THE DOCUMENTS REQUIRED BY SECTION 718.503, FLORIDA STATUTES, TO BE FURNISHED BY A DEVELOPER TO A BUYER OR LESSEE.

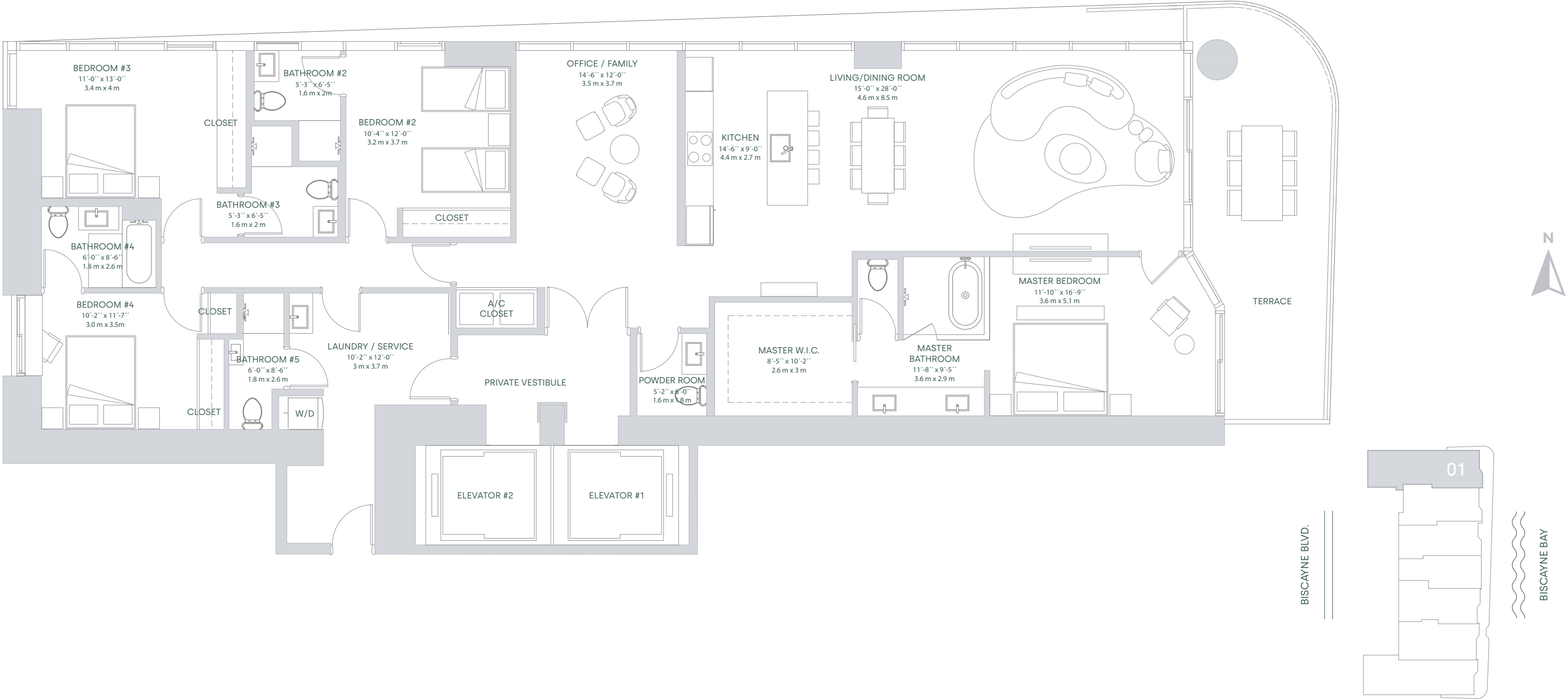
This is not intended to be an offer to sell, or solicitation to buy, condominium units to residents of any jurisdiction where prohibited by law, and your eligibility for purchase will depend upon your state of residency. The offering is made only by the prospectus for the condominium and no statement should be relied upon if not made in the prospectus. The sketches, renderings, graphic materials, plans, specifications, terms, conditions and statements contained in this brochure are proposed only, and the Developer reserves the right to modify, revise or withdraw any or all of same in its sole discretion and without prior notice. Developer intends to develop the project in phases and no representation is made as to whether all phases of the development will be completed, and if so, in what order the phases will be developed. Accordingly, the final size of the project, including amenities, is subject to change without notice. Certain buildings and/or amenities depicted herein may never be developed. All prices are subject to change at any time and without notice, and do not include optional features or premiums for upgraded units. With respect to the floor shown herein, stated interior square footage is measured to the exterior face of exterior walls and to the centerline of interior demising walls or to the exterior face of walls adjoining corridors or other common elements or shared facilities without excluding areas that may be occupied by columns or other structural components. This method of measurement varies from, and is larger than, the dimensions that would be determined by using the description and the definition of the Unit set forth in the Declaration (which generally only includes the interior airspace between the perimeter walls and excludes structural components). For reference, the area of the unit, determined in accordance with the unit boundaries set forth in the Declaration is set forth in Exhibit "3" to the Declaration. All dimensions described herein are approximate and may vary with actual construction. Note that measurements of rooms set forth on the floor plans are generally taken at the greatest points of each given room (as if the room were a perfect rectangle), without regard for any cutouts or irregularities. Accordingly, the area of the actual room will typically be smaller than the product obtained by multiplying the stated length times width. The size and configuration of balconies and terraces varies throughout the building. The balcony depicted herein is among the larger balconies and is not reflective of the actual size or configuration of the balcony for each unit of this unit type. For the actual size and configuration of the balcony for your unit, see Exhibit "2" to the Declaration of Condominium. All depictions of furnishings, appliances, built-ins, counters, and other matters of detail, including, without limitation, items of finish and decoration, are conceptual only and are not necessarily included in each Unit. Consult your prospectus and Purchase Agreement. The project graphics, renderings and text provided herein are copyrighted works owned by the Developer. All rights reserved. Unauthorized reproduction, display or other dissemination of such materials is strictly prohibited and constitutes copyright infringement. The Aria Reserve South and Aria Reserve North condominiums are being developed, respectively, by South Park Tower LLC and North Park Tower LLC, each of which has an affiliation with The Melo Group ("Melo"). Any and all statements, disclosures and/or representations made to purchasers in Aria Reserve South shall be deemed made by South Park Tower LLC and not by Melo, Arquitectonica or ArcGeo (collectively, the "Associated Parties"). Similarly, any and all statements, disclosures and/or representations made to purchasers in Aria Reserve North shall be deemed made by North Park Tower LLC and not by Melo or the Associated Parties. Purchaser agrees to look solely to the applicable Developer of the particular condominium (and not to Melo or the Associated Parties) with respect to any and all matters relating to the marketing and/or development of the applicable Condominium and with respect to the sales of Units in the applicable Condominium.


PANORAMIC RESIDENCES & SKYVIEW RESIDENCES
LEVEL 03-50 LEVEL 51-56

TOTAL SQ.FT.	2,954 SQ.FT	274 SQ.MT
A/C AREA	2,663 SQ.FT	247 SQ.MT
TERRACE	291 SQ.FT	27 SQ.MT

UNIT 01

4 BEDROOMS + OFFICE
5^{1/2} BATHROOMS
WITH STAFF ROOM



 ORAL REPRESENTATIONS CANNOT BE RELIED UPON AS CORRECTLY STATING THE REPRESENTATIONS OF THE DEVELOPER. FOR CORRECT REPRESENTATIONS, MAKE REFERENCE TO THIS BROCHURE AND TO THE DOCUMENTS REQUIRED BY SECTION 718.503, FLORIDA STATUTES, TO BE FURNISHED BY A DEVELOPER TO A BUYER OR LESSEE.

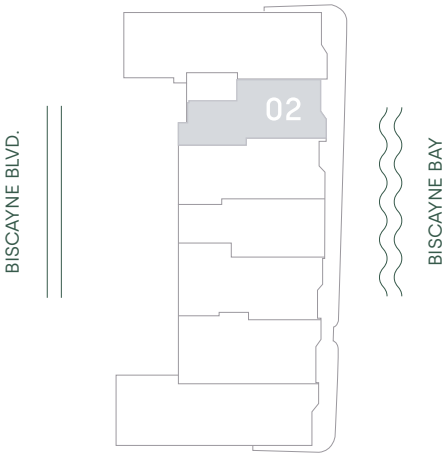
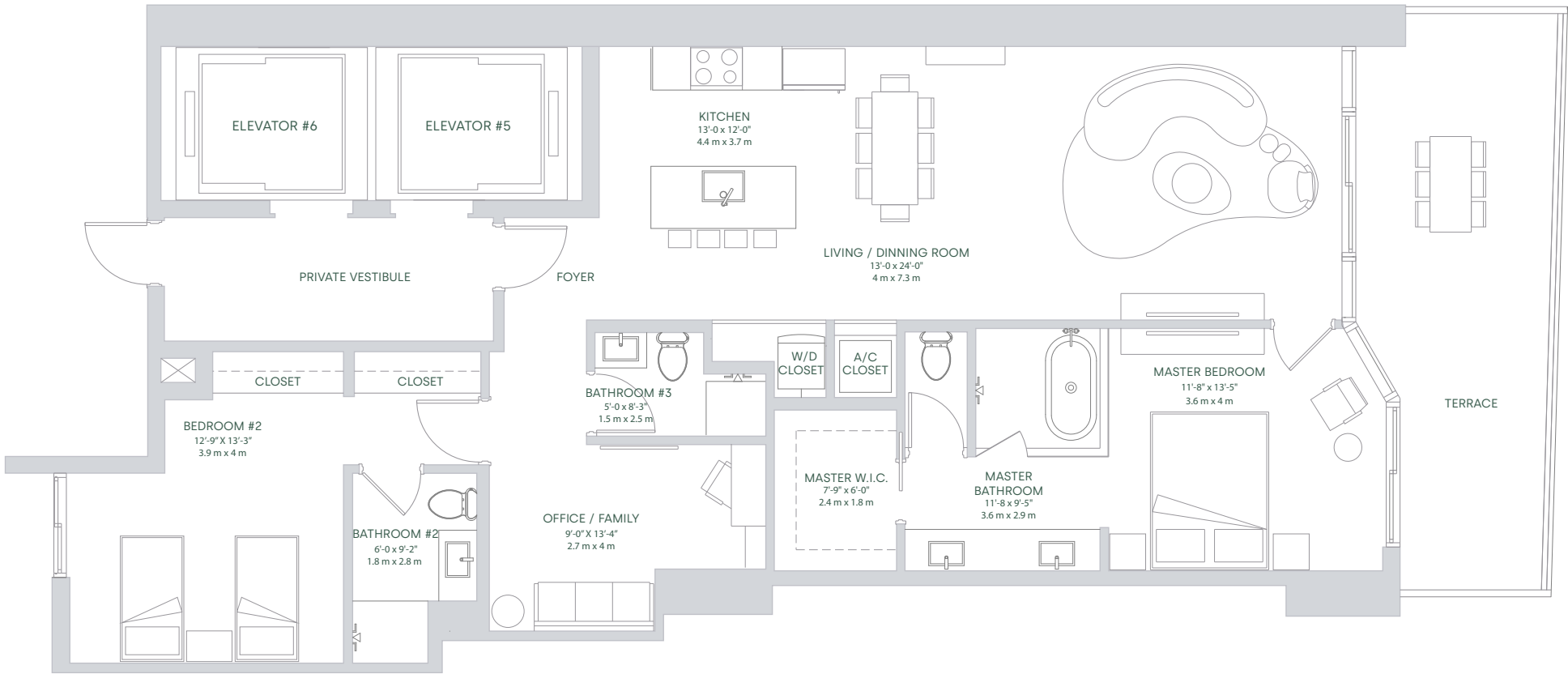
This is not intended to be an offer to sell, or solicitation to buy, condominium units to residents of any jurisdiction where prohibited by law, and your eligibility for purchase will depend upon your state of residency. The offering is made only by the prospectus for the condominium and no statement should be relied upon if not made in the prospectus. The sketches, renderings, graphic materials, plans, specifications, terms, conditions and statements contained in this brochure are proposed only, and the Developer reserves the right to modify, revise or withdraw any or all of same in its sole discretion and without prior notice. Developer intends to develop the project in phases and no representation is made as to whether all phases of the development will be completed, and if so, in what order the phases will be developed. Accordingly, the final size of the project, including amenities, is subject to change without notice. Certain buildings and/or amenities depicted herein may never be developed. All prices are subject to change at any time and without notice, and do not include optional features or premiums for upgraded units. With respect to the floor shown herein, stated interior square footage is measured to the exterior face of exterior walls and to the centerline of interior demising walls or to the exterior face of walls adjoining corridors or other common elements or shared facilities without excluding areas that may be occupied by columns or other structural components. This method of measurement varies from, and is larger than, the dimensions that would be determined by using the description and the definition of the Unit set forth in the Declaration (which generally only includes the interior airspace between the perimeter walls and excludes structural components). For reference, the area of the unit, determined in accordance with the unit boundaries set forth in the Declaration is set forth in Exhibit "3" to the Declaration. All dimensions described herein are approximate and may vary with actual construction. Note that measurements of rooms set forth on the floor plans are generally taken at the greatest points of each given room (as if the room were a perfect rectangle), without regard for any cutouts or irregularities. Accordingly, the area of the actual room will typically be smaller than the product obtained by multiplying the stated length times width. The size and configuration of balconies and terraces varies throughout the building. The balcony depicted herein is among the larger balconies and is not reflective of the actual size or configuration of the balcony for each unit of this unit type. For the actual size and configuration of the balcony for your unit, see Exhibit "2" to the Declaration of Condominium. All depictions of furnishings, appliances, built-ins, counters, and other matters of detail, including, without limitation, items of finish and decoration, are conceptual only and are not necessarily included in each Unit. Consult your prospectus and Purchase Agreement. The project graphics, renderings and text provided herein are copyrighted works owned by the Developer. All rights reserved. Unauthorized reproduction, display or other dissemination of such materials is strictly prohibited and constitutes copyright infringement. The Aria Reserve South and Aria Reserve North condominiums are being developed, respectively, by South Park Tower LLC and North Park Tower LLC, each of which has an affiliation with The Melo Group ("Melo"). Any and all statements, disclosures and/or representations made to purchasers in Aria Reserve South shall be deemed made by South Park Tower LLC and not by Melo, Arquitectonica or ArcGeo (collectively, the "Associated Parties"). Similarly, any and all statements, disclosures and/or representations made to purchasers in Aria Reserve North shall be deemed made by North Park Tower LLC and not by Melo or the Associated Parties. Purchaser agrees to look solely to the applicable Developer of the particular condominium (and not to Melo or the Associated Parties) with respect to any and all matters relating to the marketing and/or development of the applicable Condominium and with respect to the sales of Units in the applicable Condominium.

PANORAMIC RESIDENCES
LEVEL 03-46

TOTAL SQ.FT.	1,792 SQ.FT	166 SQ.MT
A/C AREA	1,528 SQ.FT	142 SQ.MT
TERRACE	264 SQ.FT	25 SQ.MT

UNIT 02

2 BEDROOMS + OFFICE
3 BATHROOMS



ORAL REPRESENTATIONS CANNOT BE RELIED UPON AS CORRECTLY STATING THE REPRESENTATIONS OF THE DEVELOPER. FOR CORRECT REPRESENTATIONS, MAKE REFERENCE TO THIS BROCHURE AND TO THE DOCUMENTS REQUIRED BY SECTION 718.503, FLORIDA STATUTES, TO BE FURNISHED BY A DEVELOPER TO A BUYER OR LESSEE.

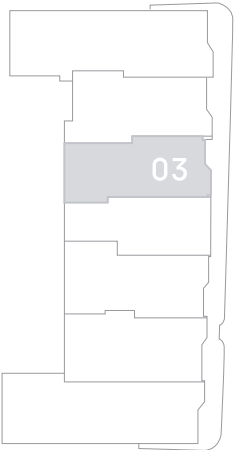
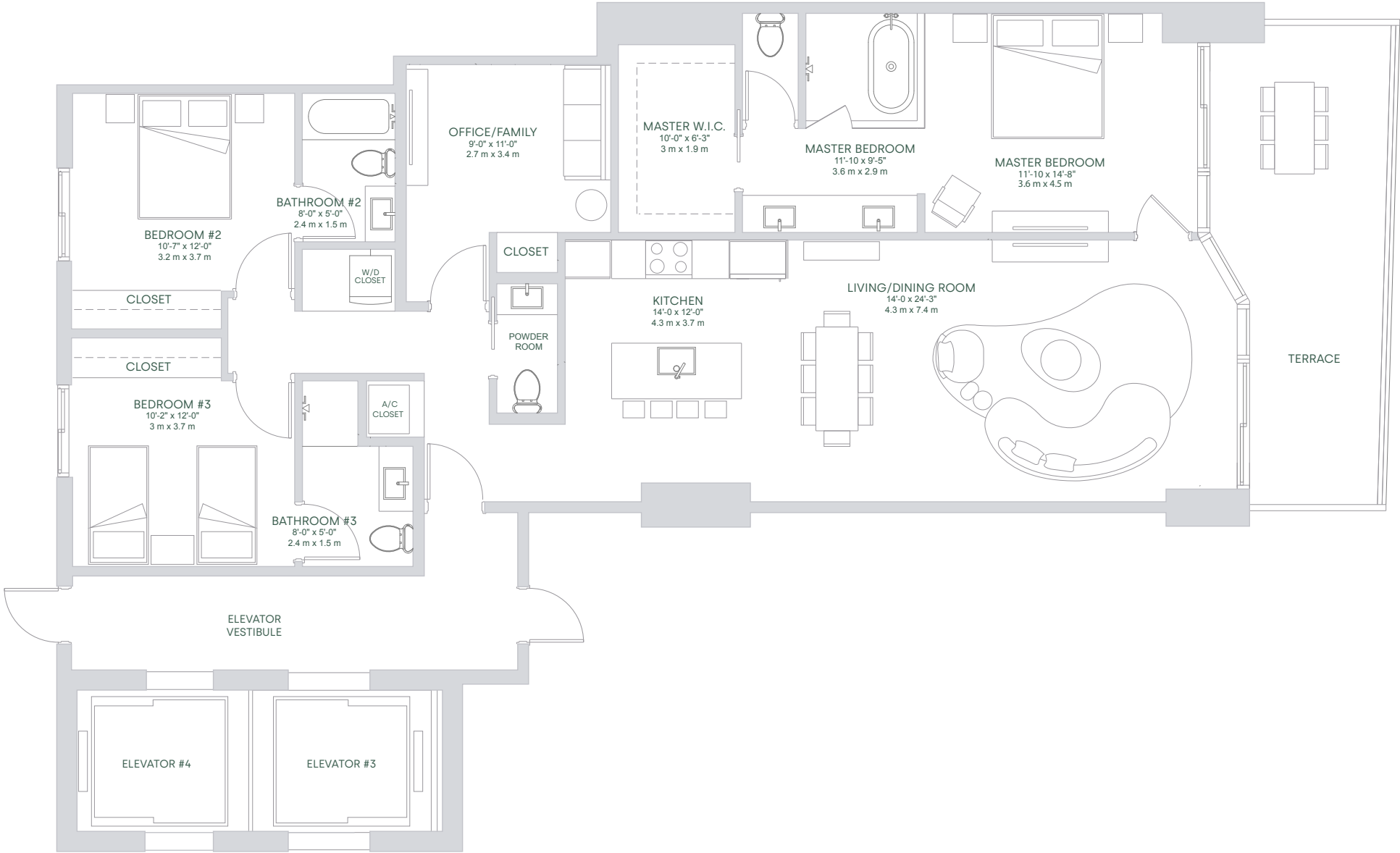
This is not intended to be an offer to sell, or solicitation to buy, condominium units to residents of any jurisdiction where prohibited by law, and your eligibility for purchase will depend upon your state of residency. The offering is made only by the prospectus for the condominium and no statement should be relied upon if not made in the prospectus. The sketches, renderings, graphic materials, plans, specifications, terms, conditions and statements contained in this brochure are proposed only, and the Developer reserves the right to modify, revise or withdraw any or all of same in its sole discretion and without prior notice. Developer intends to develop the project in phases and no representation is made as to whether all phases of the development will be completed, and if so, in what order the phases will be developed. Accordingly, the final size of the project, including amenities, is subject to change without notice. Certain buildings and/or amenities depicted herein may never be developed. All prices are subject to change at any time and without notice, and do not include optional features or premiums for upgraded units. With respect to the floor shown herein, stated interior square footage is measured to the exterior face of exterior walls and to the centerline of interior demising walls or to the exterior face of walls adjoining corridors or other common elements or shared facilities without excluding areas that may be occupied by columns or other structural components. This method of measurement varies from, and is larger than, the dimensions that would be determined by using the description and the definition of the Unit set forth in the Declaration (which generally only includes the interior airspace between the perimeter walls and excludes structural components). For reference, the area of the unit, determined in accordance with the unit boundaries set forth in the Declaration is set forth in Exhibit "3" to the Declaration. All dimensions described herein are approximate and may vary with actual construction. Note that measurements of rooms set forth on the floor plans are generally taken at the greatest points of each given room (as if the room were a perfect rectangle), without regard for any cutouts or irregularities. Accordingly, the area of the actual room will typically be smaller than the product obtained by multiplying the stated length times width. The size and configuration of balconies and terraces varies throughout the building. The balcony depicted herein is among the larger balconies and is not reflective of the actual size or configuration of the balcony for each unit of this unit type. For the actual size and configuration of the balcony for your unit, see Exhibit "2" to the Declaration of Condominium. All depictions of furnishings, appliances, built-ins, counters, and other matters of detail, including, without limitation, items of finish and decoration, are conceptual only and are not necessarily included in each Unit. Consult your prospectus and Purchase Agreement. The project graphics, renderings and text provided herein are copyrighted works owned by the Developer. All rights reserved. Unauthorized reproduction, display or other dissemination of such materials is strictly prohibited and constitutes copyright infringement. The Aria Reserve South and Aria Reserve North condominiums are being developed, respectively, by South Park Tower LLC and North Park Tower LLC, each of which has an affiliation with The Melo Group ("Melo"). Any and all statements, disclosures and/or representations made to purchasers in Aria Reserve South shall be deemed made by South Park Tower LLC and not by Melo, Arquitectonica or ArcGeo (collectively, the "Associated Parties"). Similarly, any and all statements, disclosures and/or representations made to purchasers in Aria Reserve North shall be deemed made by North Park Tower LLC and not by Melo or the Associated Parties. Purchaser agrees to look solely to the applicable Developer of the particular condominium (and not to Melo or the Associated Parties) with respect to any and all matters relating to the marketing and/or development of the applicable Condominium and with respect to the sales of Units in the applicable Condominium.

PANORAMIC RESIDENCES
LEVEL 03-46

TOTAL SQ.FT.	1,890 SQ.FT	176 SQ.MT
A/C AREA	1,651 SQ.FT	153 SQ.MT
TERRACE	239 SQ.FT	22 SQ.MT

UNIT 03

3 BEDROOMS + OFFICE
3^{1/2} BATHROOMS



 ORAL REPRESENTATIONS CANNOT BE RELIED UPON AS CORRECTLY STATING THE REPRESENTATIONS OF THE DEVELOPER. FOR CORRECT REPRESENTATIONS, MAKE REFERENCE TO THIS BROCHURE AND TO THE DOCUMENTS REQUIRED BY SECTION 718.503, FLORIDA STATUTES, TO BE FURNISHED BY A DEVELOPER TO A BUYER OR LESSEE.

This is not intended to be an offer to sell, or solicitation to buy, condominium units to residents of any jurisdiction where prohibited by law, and your eligibility for purchase will depend upon your state of residency. The offering is made only by the prospectus for the condominium and no statement should be relied upon if not made in the prospectus. The sketches, renderings, graphic materials, plans, specifications, terms, conditions and statements contained in this brochure are proposed only, and the Developer reserves the right to modify, revise or withdraw any or all of same in its sole discretion and without prior notice. Developer intends to develop the project in phases and no representation is made as to whether all phases of the development will be completed, and if so, in what order the phases will be developed. Accordingly, the final size of the project, including amenities, is subject to change without notice. Certain buildings and/or amenities depicted herein may never be developed. All prices are subject to change at any time and without notice, and do not include optional features or premiums for upgraded units. With respect to the floor shown herein, stated interior square footage is measured to the exterior face of exterior walls and to the centerline of interior demising walls or to the exterior face of walls adjoining corridors or other common elements or shared facilities without excluding areas that may be occupied by columns or other structural components. This method of measurement varies from, and is larger than, the dimensions that would be determined by using the description and the definition of the Unit set forth in the Declaration (which generally only includes the interior airspace between the perimeter walls and excludes structural components). For reference, the area of the unit, determined in accordance with the unit boundaries set forth in the Declaration is set forth in Exhibit "3" to the Declaration. All dimensions described herein are approximate and may vary with actual construction. Note that measurements of rooms set forth on the floor plans are generally taken at the greatest points of each given room (as if the room were a perfect rectangle), without regard for any cutouts or irregularities. Accordingly, the area of the actual room will typically be smaller than the product obtained by multiplying the stated length times width. The size and configuration of balconies and terraces varies throughout the building. The balcony depicted herein is among the larger balconies and is not reflective of the actual size or configuration of the balcony for each unit of this unit type. For the actual size and configuration of the balcony for your unit, see Exhibit "2" to the Declaration of Condominium. All depictions of furnishings, appliances, built-ins, counters, and other matters of detail, including, without limitation, items of finish and decoration, are conceptual only and are not necessarily included in each Unit. Consult your prospectus and Purchase Agreement. The project graphics, renderings and text provided herein are copyrighted works owned by the Developer. All rights reserved. Unauthorized reproduction, display or other dissemination of such materials is strictly prohibited and constitutes copyright infringement. The Aria Reserve South and Aria Reserve North condominiums are being developed, respectively, by South Park Tower LLC and North Park Tower LLC, each of which has an affiliation with The Melo Group ("Melo"). Any and all statements, disclosures and/or representations made to purchasers in Aria Reserve South shall be deemed made by South Park Tower LLC and not by Melo, Arquitectonica or ArcGeo (collectively, the "Associated Parties"). Similarly, any and all statements, disclosures and/or representations made to purchasers in Aria Reserve North shall be deemed made by North Park Tower LLC and not by Melo or the Associated Parties. Purchaser agrees to look solely to the applicable Developer of the particular condominium (and not to Melo or the Associated Parties) with respect to any and all matters relating to the marketing and/or development of the applicable Condominium and with respect to the sales of Units in the applicable Condominium.

PANORAMIC RESIDENCES

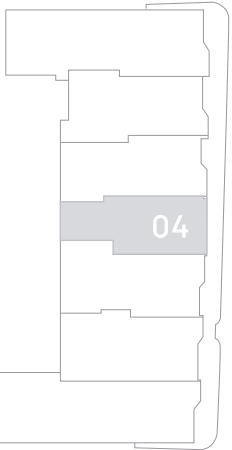
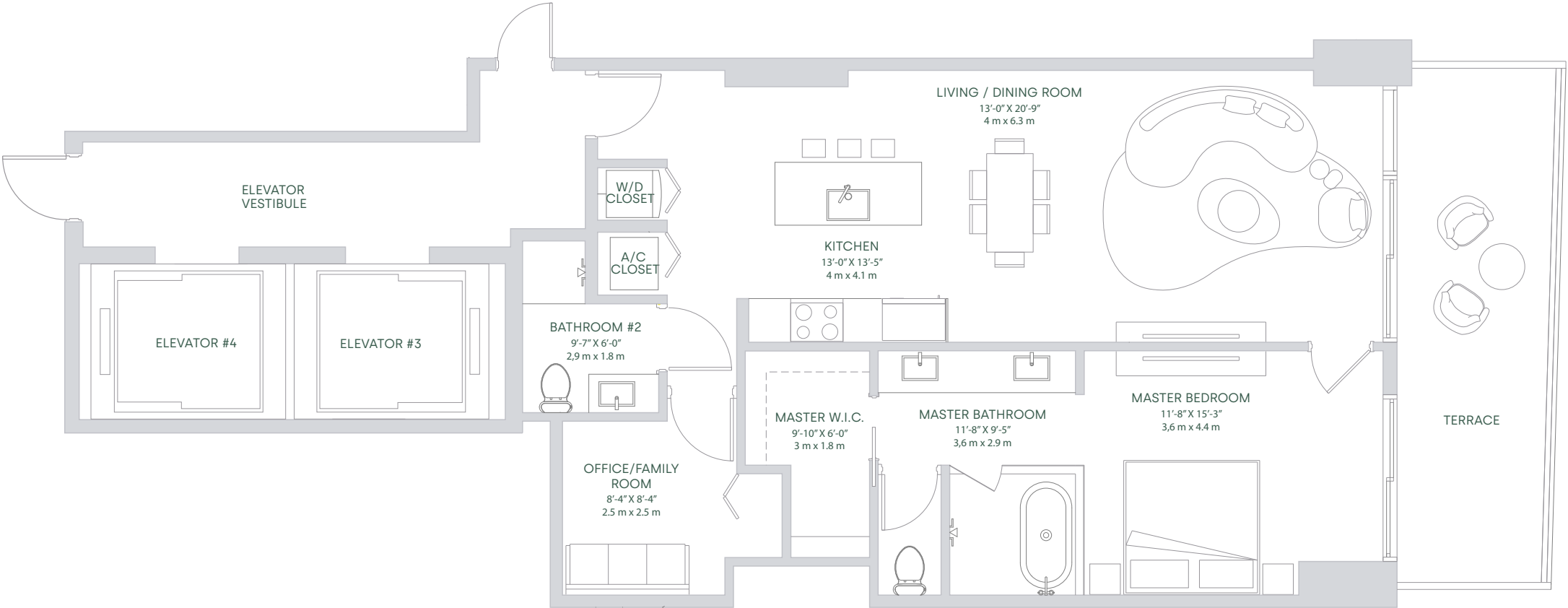
LEVEL 03-46

TOTAL SQ.FT.	1,228 SQ.FT	115 SQ.MT
A/C AREA	1,028 SQ.FT	96 SQ.MT
TERRACE	200 SQ.FT	19 SQ.MT

UNIT 04

1 BEDROOM + OFFICE

2 BATHROOMS



BISCAYNE BLVD.

BISCAYNE BAY



ORAL REPRESENTATIONS CANNOT BE RELIED UPON AS CORRECTLY STATING THE REPRESENTATIONS OF THE DEVELOPER. FOR CORRECT REPRESENTATIONS, MAKE REFERENCE TO THIS BROCHURE AND TO THE DOCUMENTS REQUIRED BY SECTION 718.503, FLORIDA STATUTES, TO BE FURNISHED BY A DEVELOPER TO A BUYER OR LESSEE.

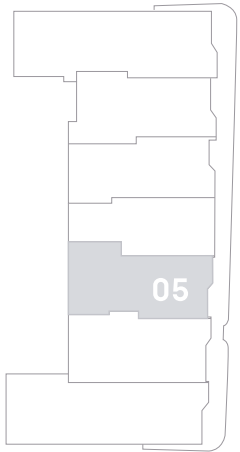
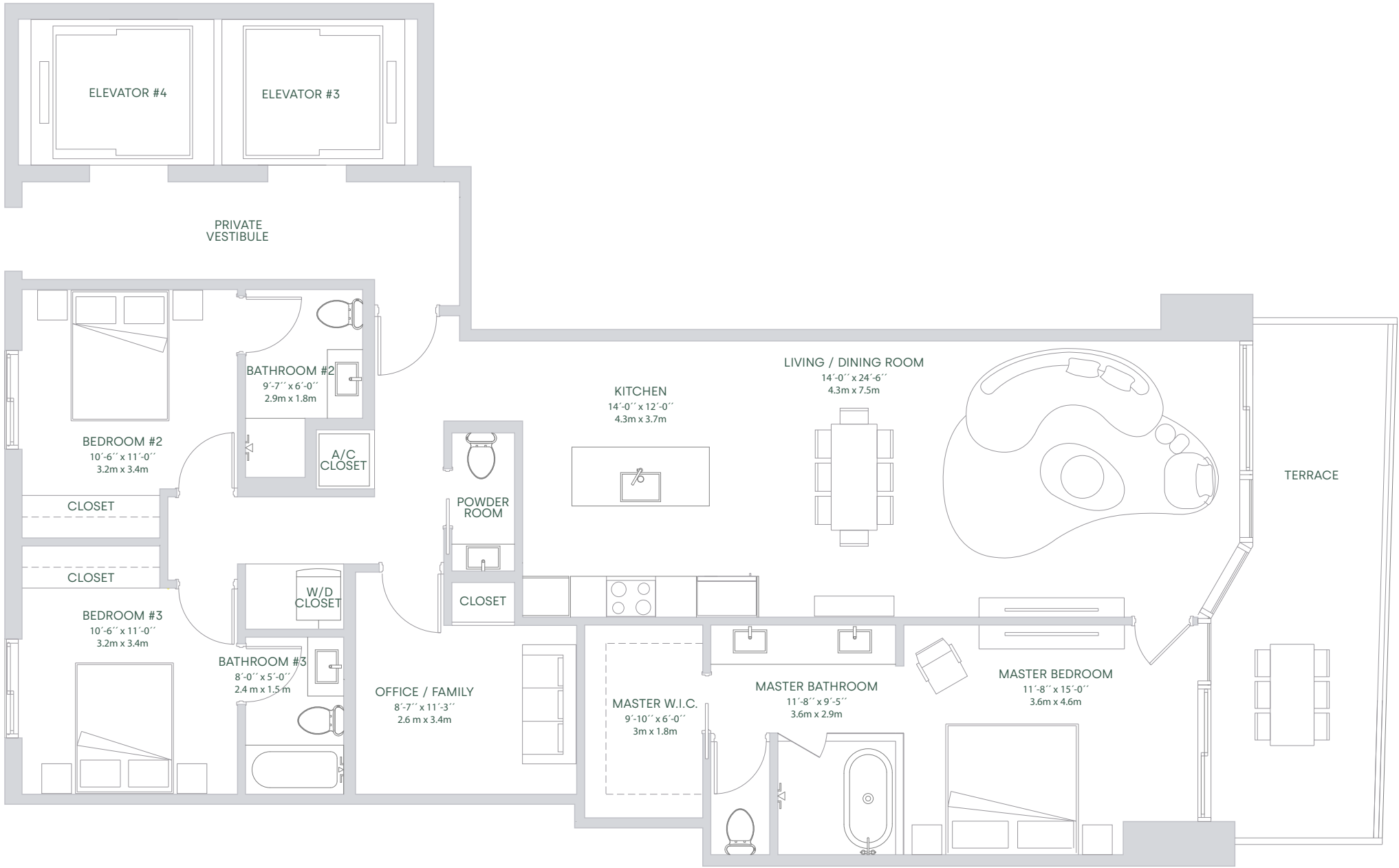
This is not intended to be an offer to sell, or solicitation to buy, condominium units to residents of any jurisdiction where prohibited by law, and your eligibility for purchase will depend upon your state of residency. The offering is made only by the prospectus for the condominium and no statement should be relied upon if not made in the prospectus. The sketches, renderings, graphic materials, plans, specifications, terms, conditions and statements contained in this brochure are proposed only, and the Developer reserves the right to modify, revise or withdraw any or all of same in its sole discretion and without prior notice. Developer intends to develop the project in phases and no representation is made as to whether all phases of the development will be completed, and if so, in what order the phases will be developed. Accordingly, the final size of the project, including amenities, is subject to change without notice. Certain buildings and/or amenities depicted herein may never be developed. All prices are subject to change at any time and without notice, and do not include optional features or premiums for upgraded units. With respect to the floor shown herein, stated interior square footage is measured to the exterior face of exterior walls and to the centerline of interior demising walls or to the exterior face of walls adjoining corridors or other common elements or shared facilities without excluding areas that may be occupied by columns or other structural components. This method of measurement varies from, and is larger than, the dimensions that would be determined by using the description and the definition of the Unit set forth in the Declaration (which generally only includes the interior airspace between the perimeter walls and excludes structural components). For reference, the area of the unit, determined in accordance with the unit boundaries set forth in the Declaration is set forth in Exhibit "3" to the Declaration. All dimensions described herein are approximate and may vary with actual construction. Note that measurements of rooms set forth on the floor plans are generally taken at the greatest points of each given room (as if the room were a perfect rectangle), without regard for any cutouts or irregularities. Accordingly, the area of the actual room will typically be smaller than the product obtained by multiplying the stated length times width. The size and configuration of balconies and terraces varies throughout the building. The balcony depicted herein is among the larger balconies and is not reflective of the actual size or configuration of the balcony for each unit of this unit type. For the actual size and configuration of the balcony for your unit, see Exhibit "2" to the Declaration of Condominium. All depictions of furnishings, appliances, built-ins, counters, and other matters of detail, including, without limitation, items of finish and decoration, are conceptual only and are not necessarily included in each Unit. Consult your prospectus and Purchase Agreement. The project graphics, renderings and text provided herein are copyrighted works owned by the Developer. All rights reserved. Unauthorized reproduction, display or other dissemination of such materials is strictly prohibited and constitutes copyright infringement. The Aria Reserve South and Aria Reserve North condominiums are being developed, respectively, by South Park Tower LLC and North Park Tower LLC, each of which has an affiliation with The Melo Group ("Melo"). Any and all statements, disclosures and/or representations made to purchasers in Aria Reserve South shall be deemed made by South Park Tower LLC and not by Melo, Arquitectonica or ArcGeo (collectively, the "Associated Parties"). Similarly, any and all statements, disclosures and/or representations made to purchasers in Aria Reserve North shall be deemed made by North Park Tower LLC and not by Melo or the Associated Parties. Purchaser agrees to look solely to the applicable Developer of the particular condominium (and not to Melo or the Associated Parties) with respect to any and all matters relating to the marketing and/or development of the applicable Condominium and with respect to the sales of Units in the applicable Condominium.

PANORAMIC RESIDENCES & SKYVIEW RESIDENCES
LEVEL 03-50 LEVEL 51-56

TOTAL SQ.FT.	1,966 SQ.FT	183 SQ.MT
A/C AREA	1,760 SQ.FT	164 SQ.MT
TERRACE	206 SQ.FT	19 SQ.MT

UNIT 05

3 BEDROOMS + OFFICE
3^{1/2} BATHROOMS



ORAL REPRESENTATIONS CANNOT BE RELIED UPON AS CORRECTLY STATING THE REPRESENTATIONS OF THE DEVELOPER. FOR CORRECT REPRESENTATIONS, MAKE REFERENCE TO THIS BROCHURE AND TO THE DOCUMENTS REQUIRED BY SECTION 718.503, FLORIDA STATUTES, TO BE FURNISHED BY A DEVELOPER TO A BUYER OR LESSEE.

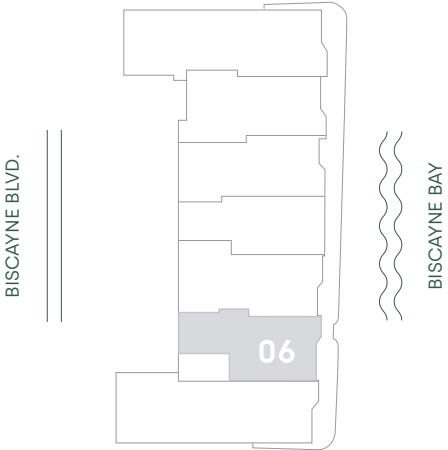
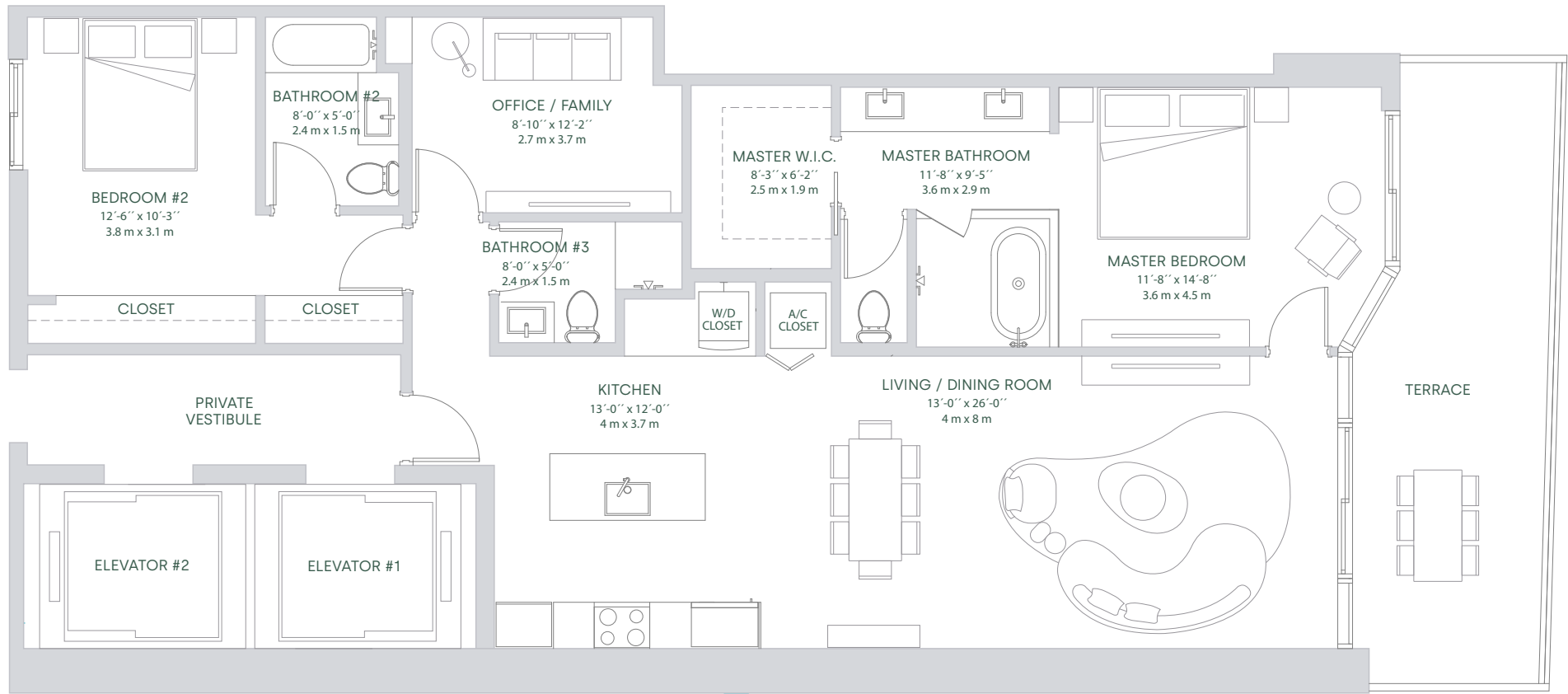
This is not intended to be an offer to sell, or solicitation to buy, condominium units to residents of any jurisdiction where prohibited by law, and your eligibility for purchase will depend upon your state of residency. The offering is made only by the prospectus for the condominium and no statement should be relied upon if not made in the prospectus. The sketches, renderings, graphic materials, plans, specifications, terms, conditions and statements contained in this brochure are proposed only, and the Developer reserves the right to modify, revise or withdraw any or all of same in its sole discretion and without prior notice. Developer intends to develop the project in phases and no representation is made as to whether all phases of the development will be completed, and if so, in what order the phases will be developed. Accordingly, the final size of the project, including amenities, is subject to change without notice. Certain buildings and/or amenities depicted herein may never be developed. All prices are subject to change at any time and without notice, and do not include optional features or premiums for upgraded units. With respect to the floor shown herein, stated interior square footage is measured to the exterior face of exterior walls and to the centerline of interior demising walls or to the exterior face of walls adjoining corridors or other common elements or shared facilities without excluding areas that may be occupied by columns or other structural components. This method of measurement varies from, and is larger than, the dimensions that would be determined by using the description and the definition of the Unit set forth in the Declaration (which generally only includes the interior airspace between the perimeter walls and excludes structural components). For reference, the area of the unit, determined in accordance with the unit boundaries set forth in the Declaration is set forth in Exhibit "3" to the Declaration. All dimensions described herein are approximate and may vary with actual construction. Note that measurements of rooms set forth on the floor plans are generally taken at the greatest points of each given room (as if the room were a perfect rectangle), without regard for any cutouts or irregularities. Accordingly, the area of the actual room will typically be smaller than the product obtained by multiplying the stated length times width. The size and configuration of balconies and terraces varies throughout the building. The balcony depicted herein is among the larger balconies and is not reflective of the actual size or configuration of the balcony for each unit of this unit type. For the actual size and configuration of the balcony for your unit, see Exhibit "2" to the Declaration of Condominium. All depictions of furnishings, appliances, built-ins, counters, and other matters of detail, including, without limitation, items of finish and decoration, are conceptual only and are not necessarily included in each Unit. Consult your prospectus and Purchase Agreement. The project graphics, renderings and text provided herein are copyrighted works owned by the Developer. All rights reserved. Unauthorized reproduction, display or other dissemination of such materials is strictly prohibited and constitutes copyright infringement. The Aria Reserve South and Aria Reserve North condominiums are being developed, respectively, by South Park Tower LLC and North Park Tower LLC, each of which has an affiliation with The Melo Group ("Melo"). Any and all statements, disclosures and/or representations made to purchasers in Aria Reserve South shall be deemed made by South Park Tower LLC and not by Melo, Arquitectonica or ArcGeo (collectively, the "Associated Parties"). Similarly, any and all statements, disclosures and/or representations made to purchasers in Aria Reserve North shall be deemed made by North Park Tower LLC and not by Melo or the Associated Parties. Purchaser agrees to look solely to the applicable Developer of the particular condominium (and not to Melo or the Associated Parties) with respect to any and all matters relating to the marketing and/or development of the applicable Condominium and with respect to the sales of Units in the applicable Condominium.


PANORAMIC RESIDENCES & SKYVIEW RESIDENCES
LEVEL 03-50 LEVEL 51-56

TOTAL SQ.FT.	1,767 SQ.FT	164 SQ.MT
A/C AREA	1,523 SQ.FT	142 SQ.MT
TERRACE	244 SQ.FT	27 SQ.MT

UNIT 06

2 BEDROOMS + OFFICE
3 BATHROOMS



 ORAL REPRESENTATIONS CANNOT BE RELIED UPON AS CORRECTLY STATING THE REPRESENTATIONS OF THE DEVELOPER. FOR CORRECT REPRESENTATIONS, MAKE REFERENCE TO THIS BROCHURE AND TO THE DOCUMENTS REQUIRED BY SECTION 718.503, FLORIDA STATUTES, TO BE FURNISHED BY A DEVELOPER TO A BUYER OR LESSEE.

This is not intended to be an offer to sell, or solicitation to buy, condominium units to residents of any jurisdiction where prohibited by law, and your eligibility for purchase will depend upon your state of residency. The offering is made only by the prospectus for the condominium and no statement should be relied upon if not made in the prospectus. The sketches, renderings, graphic materials, plans, specifications, terms, conditions and statements contained in this brochure are proposed only, and the Developer reserves the right to modify, revise or withdraw any or all of same in its sole discretion and without prior notice. Developer intends to develop the project in phases and no representation is made as to whether all phases of the development will be completed, and if so, in what order the phases will be developed. Accordingly, the final size of the project, including amenities, is subject to change without notice. Certain buildings and/or amenities depicted herein may never be developed. All prices are subject to change at any time and without notice, and do not include optional features or premiums for upgraded units. With respect to the floor shown herein, stated interior square footage is measured to the exterior face of exterior walls and to the centerline of interior demising walls or to the exterior face of walls adjoining corridors or other common elements or shared facilities without excluding areas that may be occupied by columns or other structural components. This method of measurement varies from, and is larger than, the dimensions that would be determined by using the description and the definition of the Unit set forth in the Declaration (which generally only includes the interior airspace between the perimeter walls and excludes structural components). For reference, the area of the unit, determined in accordance with the unit boundaries set forth in the Declaration is set forth in Exhibit "3" to the Declaration. All dimensions described herein are approximate and may vary with actual construction. Note that measurements of rooms set forth on the floor plans are generally taken at the greatest points of each given room (as if the room were a perfect rectangle), without regard for any cutouts or irregularities. Accordingly, the area of the actual room will typically be smaller than the product obtained by multiplying the stated length times width. The size and configuration of balconies and terraces varies throughout the building. The balcony depicted herein is among the larger balconies and is not reflective of the actual size or configuration of the balcony for each unit of this unit type. For the actual size and configuration of the balcony for your unit, see Exhibit "2" to the Declaration of Condominium. All depictions of furnishings, appliances, built-ins, counters, and other matters of detail, including, without limitation, items of finish and decoration, are conceptual only and are not necessarily included in each Unit. Consult your prospectus and Purchase Agreement. The project graphics, renderings and text provided herein are copyrighted works owned by the Developer. All rights reserved. Unauthorized reproduction, display or other dissemination of such materials is strictly prohibited and constitutes copyright infringement. The Aria Reserve South and Aria Reserve North condominiums are being developed, respectively, by South Park Tower LLC and North Park Tower LLC, each of which has an affiliation with The Melo Group ("Melo"). Any and all statements, disclosures and/or representations made to purchasers in Aria Reserve South shall be deemed made by South Park Tower LLC and not by Melo, Arquitectonica or ArcGeo (collectively, the "Associated Parties"). Similarly, any and all statements, disclosures and/or representations made to purchasers in Aria Reserve North shall be deemed made by North Park Tower LLC and not by Melo or the Associated Parties. Purchaser agrees to look solely to the applicable Developer of the particular condominium (and not to Melo or the Associated Parties) with respect to any and all matters relating to the marketing and/or development of the applicable Condominium and with respect to the sales of Units in the applicable Condominium.

PANORAMIC RESIDENCES & SKYVIEW RESIDENCES
LEVEL 03-50 LEVEL 51-56

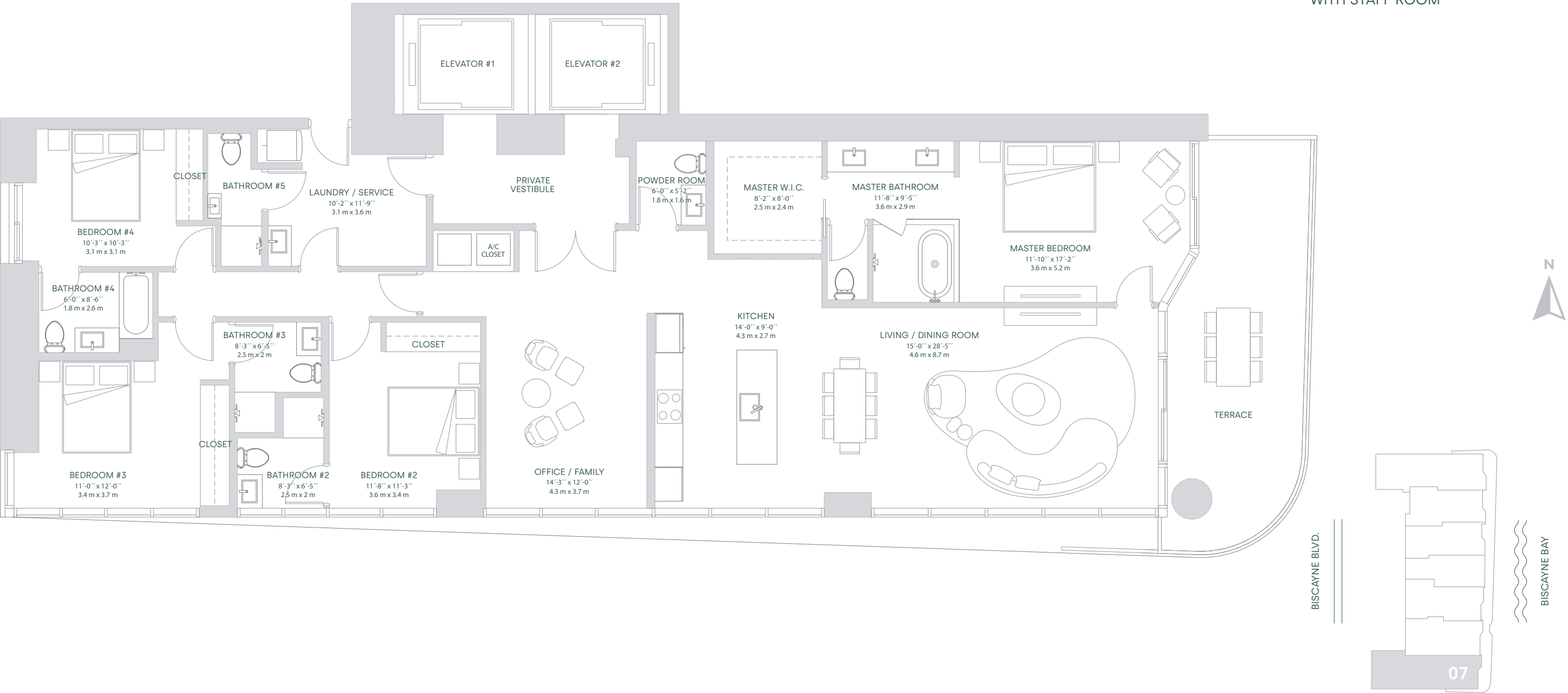
TOTAL SQ.FT.	2,884 SQ.FT	268 SQ.MT
A/C AREA	2,584 SQ.FT	240 SQ.MT
TERRACE	300 SQ.FT	28 SQ.MT


UNIT 07

4 BEDROOMS + OFFICE

5^{1/2} BATHROOMS

WITH STAFF ROOM



 ORAL REPRESENTATIONS CANNOT BE RELIED UPON AS CORRECTLY STATING THE REPRESENTATIONS OF THE DEVELOPER. FOR CORRECT REPRESENTATIONS, MAKE REFERENCE TO THIS BROCHURE AND TO THE DOCUMENTS REQUIRED BY SECTION 718.503, FLORIDA STATUTES, TO BE FURNISHED BY A DEVELOPER TO A BUYER OR LESSEE.

This is not intended to be an offer to sell, or solicitation to buy, condominium units to residents of any jurisdiction where prohibited by law, and your eligibility for purchase will depend upon your state of residency. The offering is made only by the prospectus for the condominium and no statement should be relied upon if not made in the prospectus. The sketches, renderings, graphic materials, plans, specifications, terms, conditions and statements contained in this brochure are proposed only, and the Developer reserves the right to modify, revise or withdraw any or all of same in its sole discretion and without prior notice. Developer intends to develop the project in phases and no representation is made as to whether all phases of the development will be completed, and if so, in what order the phases will be developed. Accordingly, the final size of the project, including amenities, is subject to change without notice. Certain buildings and/or amenities depicted herein may never be developed. All prices are subject to change at any time and without notice, and do not include optional features or premiums for upgraded units. With respect to the floor shown herein, stated interior square footage is measured to the exterior face of exterior walls and to the centerline of interior demising walls or to the exterior face of walls adjoining corridors or other common elements or shared facilities without excluding areas that may be occupied by columns or other structural components. This method of measurement varies from, and is larger than, the dimensions that would be determined by using the description and the definition of the Unit set forth in the Declaration (which generally only includes the interior airspace between the perimeter walls and excludes structural components). For reference, the area of the unit, determined in accordance with the unit boundaries set forth in the Declaration is set forth in Exhibit "3" to the Declaration. All dimensions described herein are approximate and may vary with actual construction. Note that measurements of rooms set forth on the floor plans are generally taken at the greatest points of each given room (as if the room were a perfect rectangle), without regard for any cutouts or irregularities. Accordingly, the area of the actual room will typically be smaller than the product obtained by multiplying the stated length times width. The size and configuration of balconies and terraces varies throughout the building. The balcony depicted herein is among the larger balconies and is not reflective of the actual size or configuration of the balcony for each unit of this unit type. For the actual size and configuration of the balcony for your unit, see Exhibit "2" to the Declaration of Condominium. All depictions of furnishings, appliances, built-ins, counters, and other matters of detail, including, without limitation, items of finish and decoration, are conceptual only and are not necessarily included in each Unit. Consult your prospectus and Purchase Agreement. The project graphics, renderings and text provided herein are copyrighted works owned by the Developer. All rights reserved. Unauthorized reproduction, display or other dissemination of such materials is strictly prohibited and constitutes copyright infringement. The Aria Reserve South and Aria Reserve North condominiums are being developed, respectively, by South Park Tower LLC and North Park Tower LLC, each of which has an affiliation with The Melo Group ("Melo"). Any and all statements, disclosures and/or representations made to purchasers in Aria Reserve South shall be deemed made by South Park Tower LLC and not by Melo, Arquitectonica or ArcGeo (collectively, the "Associated Parties"). Similarly, any and all statements, disclosures and/or representations made to purchasers in Aria Reserve North shall be deemed made by North Park Tower LLC and not by Melo or the Associated Parties. Purchaser agrees to look solely to the applicable Developer of the particular condominium (and not to Melo or the Associated Parties) with respect to any and all matters relating to the marketing and/or development of the applicable Condominium and with respect to the sales of Units in the applicable Condominium.



COMING TO MIAMI
SUMMER 2024



SkyView Villas Residences Floorplans

DISCOVER

SkyView Villas Residences Floorplans



ORAL REPRESENTATIONS CANNOT BE RELIED UPON AS CORRECTLY STATING THE REPRESENTATIONS OF THE DEVELOPER. FOR CORRECT REPRESENTATIONS, MAKE REFERENCE TO THIS BROCHURE AND TO THE DOCUMENTS REQUIRED BY SECTION 718.503, FLORIDA STATUTES, TO BE FURNISHED BY A DEVELOPER TO A BUYER OR LESSEE.

This is not intended to be an offer to sell, or solicitation to buy, condominium units to residents of any jurisdiction where prohibited by law, and your eligibility for purchase will depend upon your state of residency. The offering is made only by the prospectus for the condominium and no statement should be relied upon if not made in the prospectus. The sketches, renderings, graphic materials, plans, specifications, terms, conditions and statements contained in this brochure are proposed only, and the Developer reserves the right to modify, revise or withdraw any or all of same in its sole discretion and without prior notice. Developer intends to develop the project in phases and no representation is made as to whether all phases of the development will be completed, and if so, in what order the phases will be developed. Accordingly, the final size of the project, including amenities, is subject to change without notice. Certain buildings and/or amenities depicted herein may never be developed. All prices are subject to change at any time and without notice, and do not include optional features or premiums for upgraded units. With respect to the floor shown herein, stated interior square footage is measured to the exterior face of exterior walls and to the centerline of interior demising walls or to the exterior face of walls adjoining corridors or other common elements or shared facilities without excluding areas that may be occupied by columns or other structural components. This method of measurement varies from, and is larger than, the dimensions that would be determined by using the description and the definition of the Unit set forth in the Declaration (which generally only includes the interior airspace between the perimeter walls and excludes structural components). For reference, the area of the unit, determined in accordance with the unit boundaries set forth in the Declaration is set forth in Exhibit "3" to the Declaration. All dimensions described herein are approximate and may vary with actual construction. Note that measurements of rooms set forth on the floor plans are generally taken at the greatest points of each given room (as if the room were a perfect rectangle), without regard for any cutouts or irregularities. Accordingly, the area of the actual room will typically be smaller than the product obtained by multiplying the stated length times width. The size and configuration of balconies and terraces varies throughout the building. The balcony depicted herein is among the larger balconies and is not reflective of the actual size or configuration of the balcony for each unit of this unit type. For the actual size and configuration of the balcony for your unit, see Exhibit "2" to the Declaration of Condominium. All depictions of furnishings, appliances, built-ins, counters, and other matters of detail, including, without limitation, items of finish and decoration, are conceptual only and are not necessarily included in each Unit. Consult your prospectus and Purchase Agreement. The project graphics, renderings and text provided herein are copyrighted works owned by the Developer. All rights reserved. Unauthorized reproduction, display or other dissemination of such materials is strictly prohibited and constitutes copyright infringement. The Aria Reserve South and Aria Reserve North condominiums are being developed, respectively, by South Park Tower LLC and North Park Tower LLC, each of which has an affiliation with The Melo Group ("Melo"). Any and all statements, disclosures and/or representations made to purchasers in Aria Reserve South shall be deemed made by South Park Tower LLC and not by Melo, Arquitectonica or ArcGeo (collectively, the "Associated Parties"). Similarly, any and all statements, disclosures and/or representations made to purchasers in Aria Reserve North shall be deemed made by North Park Tower LLC and not by Melo or the Associated Parties. Purchaser agrees to look solely to the applicable Developer of the particular condominium (and not to Melo or the Associated Parties) with respect to any and all matters relating to the marketing and/or development of the applicable Condominium and with respect to the sales of Units in the applicable Condominium.

SKYVIEW VILLAS RESIDENCES

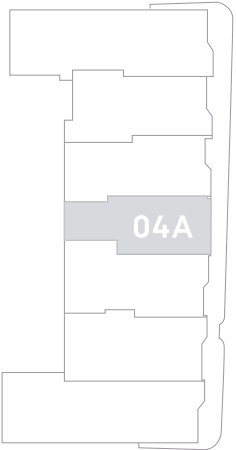
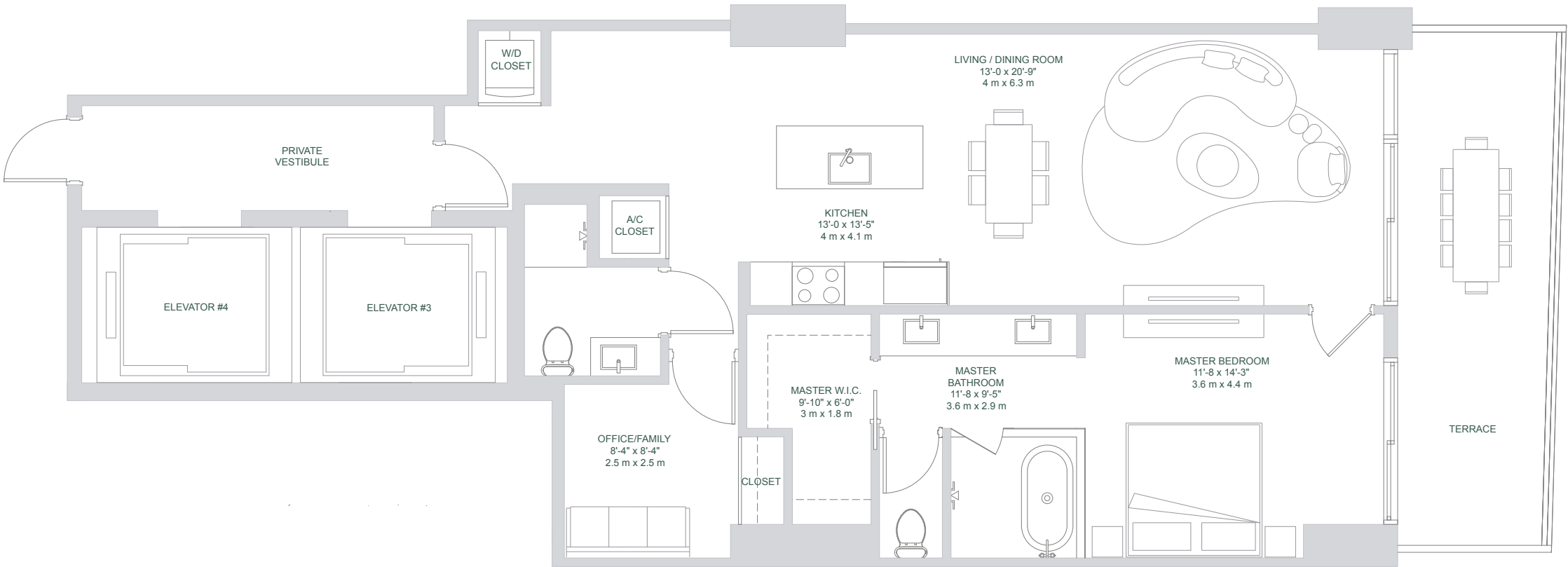
LEVEL 47-56

TOTAL SQ.FT.	1,385 SQ.FT	129 SQ.MT
A/C AREA	1,185 SQ.FT	110 SQ.MT
TERRACE	200 SQ.FT	19 SQ.MT

UNIT 04A

1 BEDROOM + OFFICE

2 BATHROOMS

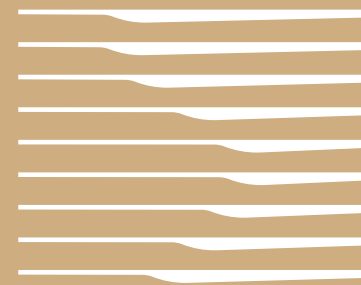


ORAL REPRESENTATIONS CANNOT BE RELIED UPON AS CORRECTLY STATING THE REPRESENTATIONS OF THE DEVELOPER. FOR CORRECT REPRESENTATIONS, MAKE REFERENCE TO THIS BROCHURE AND TO THE DOCUMENTS REQUIRED BY SECTION 718.503, FLORIDA STATUTES, TO BE FURNISHED BY A DEVELOPER TO A BUYER OR LESSEE.

This is not intended to be an offer to sell, or solicitation to buy, condominium units to residents of any jurisdiction where prohibited by law, and your eligibility for purchase will depend upon your state of residency. The offering is made only by the prospectus for the condominium and no statement should be relied upon if not made in the prospectus. The sketches, renderings, graphic materials, plans, specifications, terms, conditions and statements contained in this brochure are proposed only, and the Developer reserves the right to modify, revise or withdraw any or all of same in its sole discretion and without prior notice. Developer intends to develop the project in phases and no representation is made as to whether all phases of the development will be completed, and if so, in what order the phases will be developed. Accordingly, the final size of the project, including amenities, is subject to change without notice. Certain buildings and/or amenities depicted herein may never be developed. All prices are subject to change at any time and without notice, and do not include optional features or premiums for upgraded units. With respect to the floor shown herein, stated interior square footage is measured to the exterior face of exterior walls and to the centerline of interior demising walls or to the exterior face of walls adjoining corridors or other common elements or shared facilities without excluding areas that may be occupied by columns or other structural components. This method of measurement varies from, and is larger than, the dimensions that would be determined by using the description and the definition of the Unit set forth in the Declaration (which generally only includes the interior airspace between the perimeter walls and excludes structural components). For reference, the area of the unit, determined in accordance with the unit boundaries set forth in the Declaration is set forth in Exhibit "3" to the Declaration. All dimensions described herein are approximate and may vary with actual construction. Note that measurements of rooms set forth on the floor plans are generally taken at the greatest points of each given room (as if the room were a perfect rectangle), without regard for any cutouts or irregularities. Accordingly, the area of the actual room will typically be smaller than the product obtained by multiplying the stated length times width. The size and configuration of balconies and terraces varies throughout the building. The balcony depicted herein is among the larger balconies and is not reflective of the actual size or configuration of the balcony for each unit of this unit type. For the actual size and configuration of the balcony for your unit, see Exhibit "2" to the Declaration of Condominium. All depictions of furnishings, appliances, built-ins, counters, and other matters of detail, including, without limitation, items of finish and decoration, are conceptual only and are not necessarily included in each Unit. Consult your prospectus and Purchase Agreement. The project graphics, renderings and text provided herein are copyrighted works owned by the Developer. All rights reserved. Unauthorized reproduction, display or other dissemination of such materials is strictly prohibited and constitutes copyright infringement. The Aria Reserve South and Aria Reserve North condominiums are being developed, respectively, by South Park Tower LLC and North Park Tower LLC, each of which has an affiliation with The Melo Group ("Melo"). Any and all statements, disclosures and/or representations made to purchasers in Aria Reserve South shall be deemed made by South Park Tower LLC and not by Melo, Arquitectonica or ArcGeo (collectively, the "Associated Parties"). Similarly, any and all statements, disclosures and/or representations made to purchasers in Aria Reserve North shall be deemed made by North Park Tower LLC and not by Melo or the Associated Parties. Purchaser agrees to look solely to the applicable Developer of the particular condominium (and not to Melo or the Associated Parties) with respect to any and all matters relating to the marketing and/or development of the applicable Condominium and with respect to the sales of Units in the applicable Condominium.



COMING TO MIAMI
SUMMER 2024



ARIA
RESERVE
MIAMI

PENTHOUSE COLLECTION / Penthouses



PENTHOUSES KEYPLAN



ORAL REPRESENTATIONS CANNOT BE RELIED UPON AS CORRECTLY STATING THE REPRESENTATIONS OF THE DEVELOPER. FOR CORRECT REPRESENTATIONS, MAKE REFERENCE TO THIS BROCHURE AND TO THE DOCUMENTS REQUIRED BY SECTION 718.503, FLORIDA STATUTES, TO BE FURNISHED BY A DEVELOPER TO A BUYER OR LESSEE.

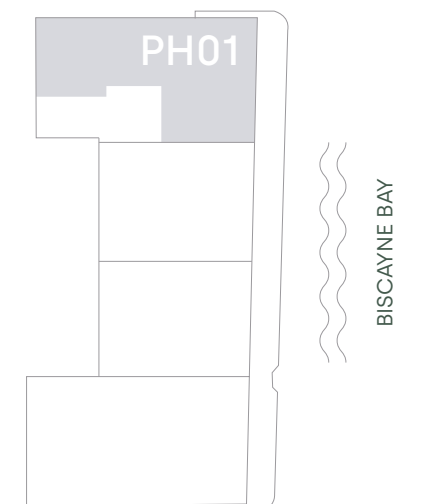
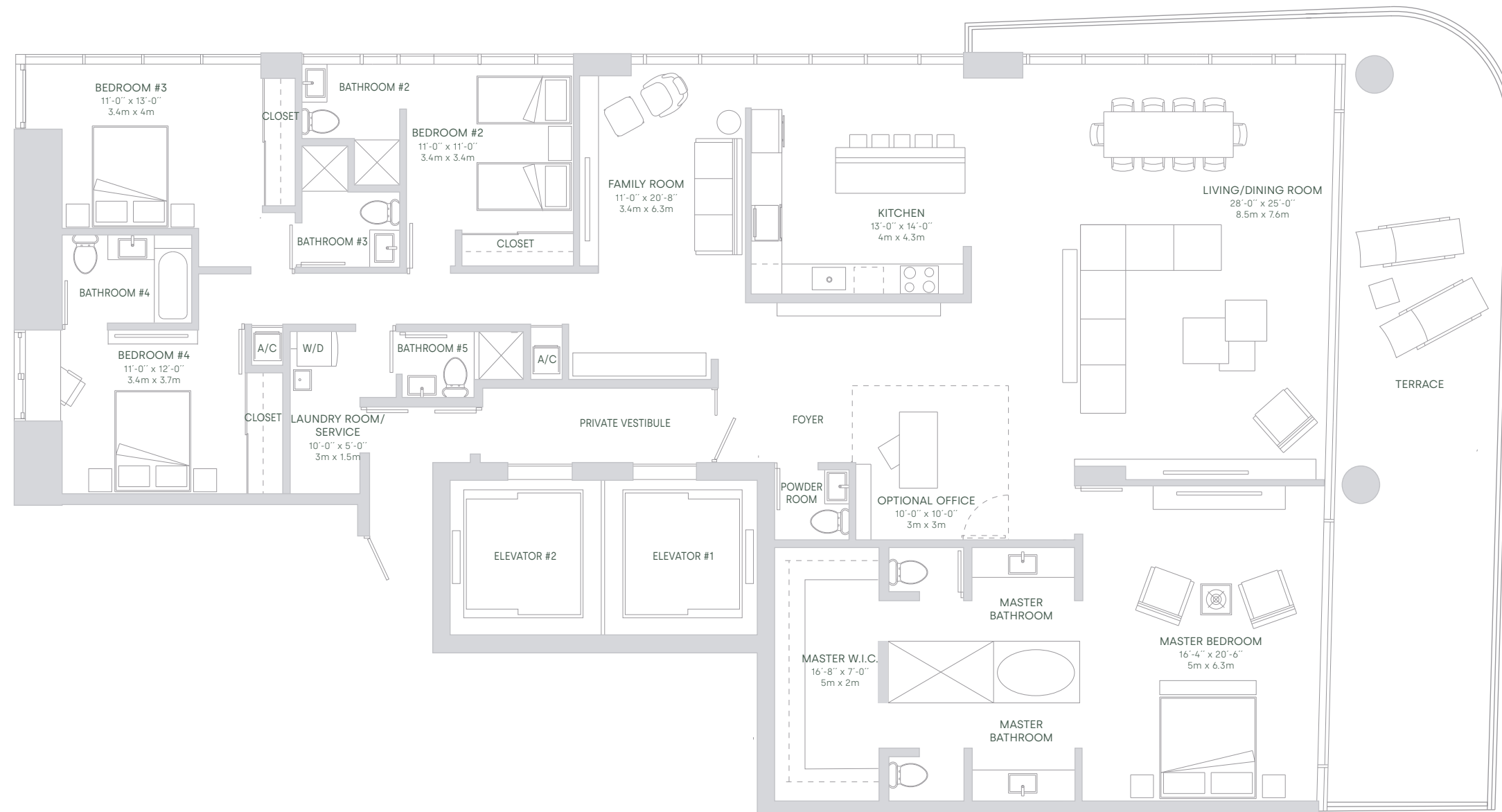
This is not intended to be an offer to sell, or solicitation to buy, condominium units to residents of any jurisdiction where prohibited by law, and your eligibility for purchase will depend upon your state of residency. The offering is made only by the prospectus for the condominium and no statement should be relied upon if not made in the prospectus. Stated interior square footage is measured to the exterior face of exterior walls and to the centerline of interior demising walls or to the exterior face of walls adjoining corridors or other common elements or shared facilities without excluding areas that may be occupied by columns or other structural components. This method of measurement varies from, and is larger than, the dimensions that would be determined by using the description and the definition of the Unit set forth in the Declaration (which generally only includes the interior airspace between the perimeter walls and excludes structural components). For reference, the area of the unit, determined in accordance with the unit boundaries set forth in the Declaration is set forth in Exhibit "3" to the Declaration. All dimensions are approximate and may vary with actual construction. Note that measurements of rooms set forth on this floor plan are generally taken at the greatest points of each given room (as if the room were a perfect rectangle), without regard for any cutouts or irregularities. Accordingly, the area of the actual room will typically be smaller than the product obtained by multiplying the stated length times width. The size and configuration of balconies and terraces varies throughout the building. The balcony depicted above is among the larger balconies and is not reflective of the actual size or configuration of the balcony for each unit of this unit type. For the actual size and configuration of the balcony for your unit, see Exhibit "2" to the Declaration of Condominium. All floor plans and development plans are subject to change. The Developer expressly reserves the right to make modifications, revisions, and changes it deems desirable in its sole and absolute discretion. Certain amenities and/or services require a separate Club membership and/or payment of certain use or access fees. All depictions of furnishings, appliances, built-ins, counters, and other matters of detail, including, without limitation, items of finish and decoration, are conceptual only and are not necessarily included in each Unit. Consult your prospectus and Purchase Agreement.

PENTHOUSES LEVEL 57-59

TOTAL SQ.FT.	3,812 SQ.FT	354 SQ.MT
A/C AREA	3,260 SQ.FT	303 SQ.MT
TERRACE	552 SQ.FT	51 SQ.MT

PH 01

4 BEDROOMS
5^{1/2} BATHROOMS + OFFICE



ORAL REPRESENTATIONS CANNOT BE RELIED UPON AS CORRECTLY STATING THE REPRESENTATIONS OF THE DEVELOPER. FOR CORRECT REPRESENTATIONS, MAKE REFERENCE TO THIS BROCHURE AND TO THE DOCUMENTS REQUIRED BY SECTION 718.503, FLORIDA STATUTES, TO BE FURNISHED BY A DEVELOPER TO A BUYER OR LESSEE.

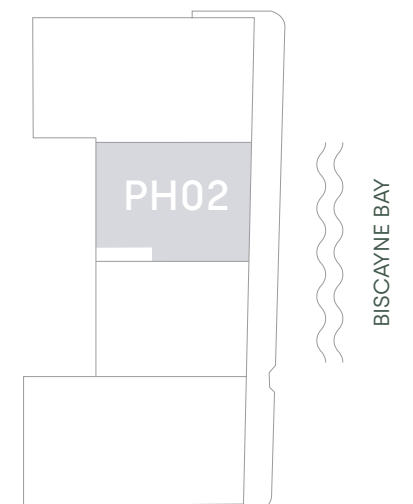
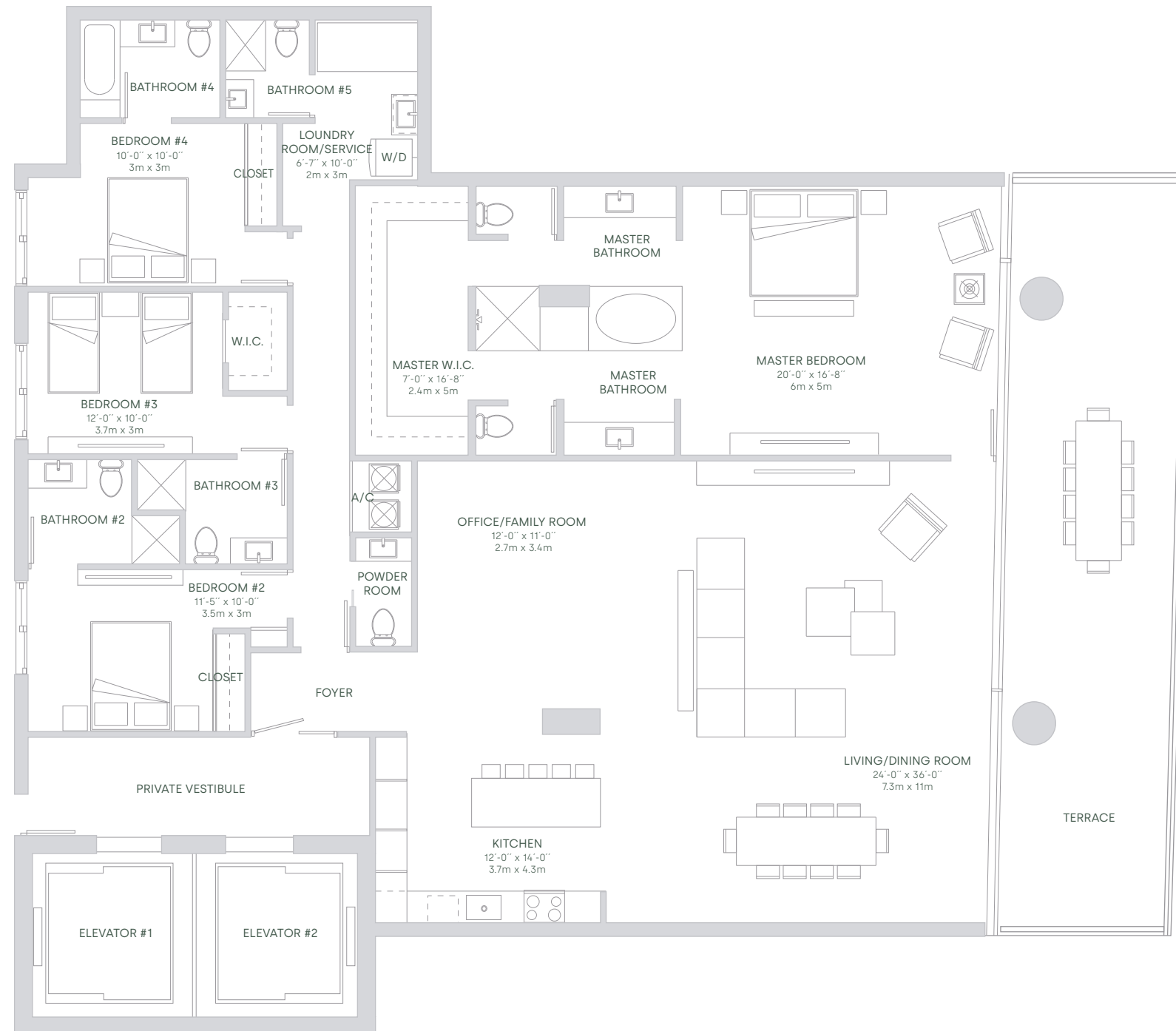
This is not intended to be an offer to sell, or solicitation to buy, condominium units to residents of any jurisdiction where prohibited by law, and your eligibility for purchase will depend upon your state of residency. The offering is made only by the prospectus for the condominium and no statement should be relied upon if not made in the prospectus. Stated interior square footage is measured to the exterior face of exterior walls and to the centerline of interior demising walls or to the exterior face of walls adjoining corridors or other common elements or shared facilities without excluding areas that may be occupied by columns or other structural components. This method of measurement varies from, and is larger than, the dimensions that would be determined by using the description and the definition of the Unit set forth in the Declaration (which generally only includes the interior airspace between the perimeter walls and excludes structural components). For reference, the area of the unit, determined in accordance with the unit boundaries set forth in the Declaration is set forth in Exhibit "3" to the Declaration. All dimensions are approximate and may vary with actual construction. Note that measurements of rooms set forth on this floor plan are generally taken at the greatest points of each given room (as if the room were a perfect rectangle), without regard for any cutouts or irregularities. Accordingly, the area of the actual room will typically be smaller than the product obtained by multiplying the stated length times width. The size and configuration of balconies and terraces varies throughout the building. The balcony depicted above is among the larger balconies and is not reflective of the actual size or configuration of the balcony for each unit of this unit type. For the actual size and configuration of the balcony for your unit, see Exhibit "2" to the Declaration of Condominium. All floor plans and development plans are subject to change. The Developer expressly reserves the right to make modifications, revisions, and changes it deems desirable in its sole and absolute discretion. Certain amenities and/or services require a separate Club membership and/or payment of certain use or access fees. All depictions of furnishings, appliances, built-ins, counters, and other matters of detail, including, without limitation, items of finish and decoration, are conceptual only and are not necessarily included in each Unit. Consult your prospectus and Purchase Agreement.



PH 02

4 BEDROOMS
5^{1/2} BATHROOMS + OFFICE

PENTHOUSES LEVEL 57-59	TOTAL SQ.FT.	3,493 SQ.FT	325 SQ.MT
	A/C AREA	3,000 SQ.FT	279 SQ.MT
	TERRACE	493 SQ.FT	46 SQ.MT

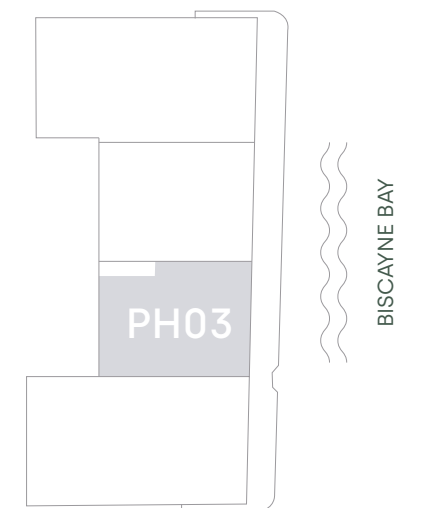
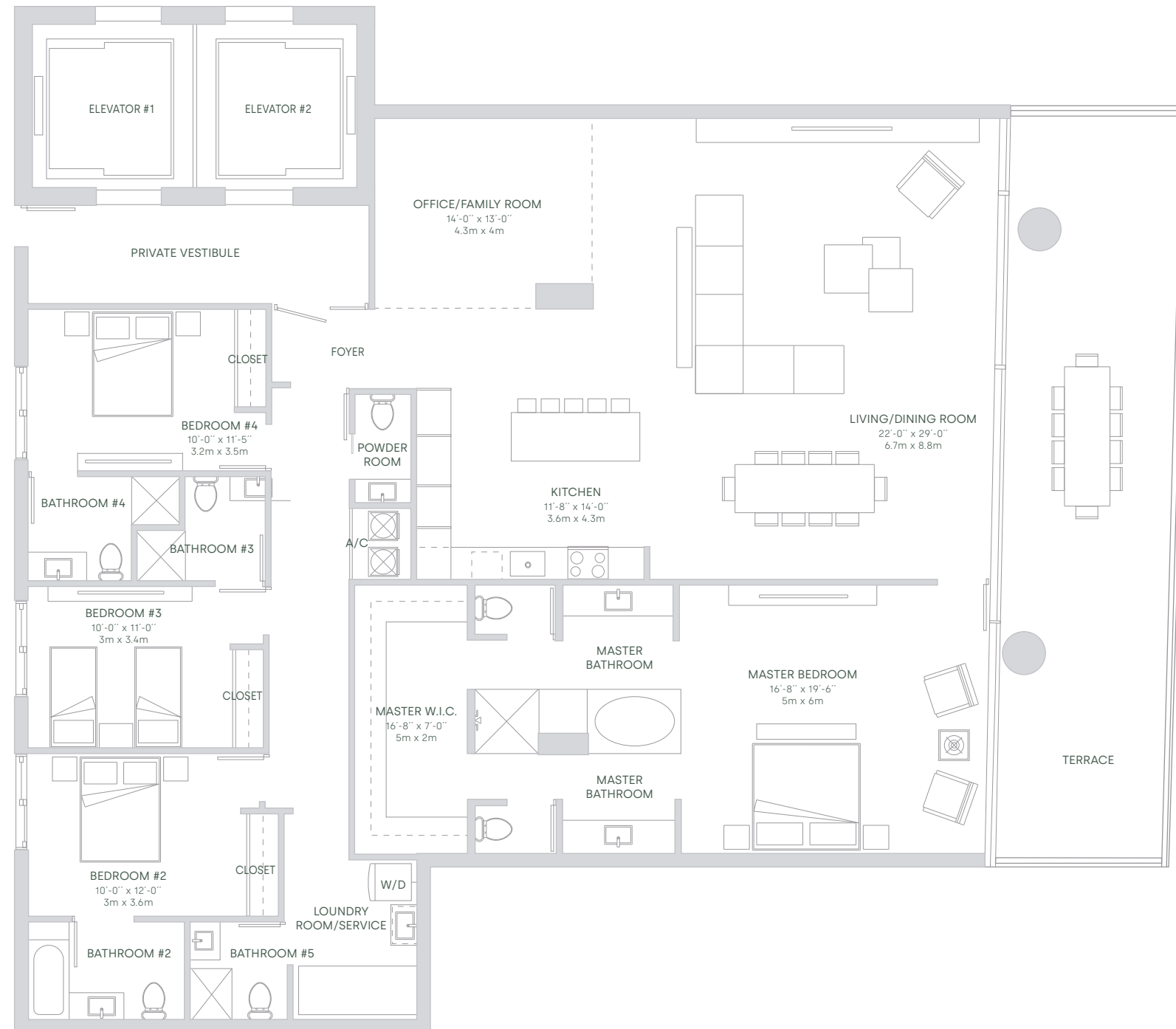


PH 03

4 BEDROOMS
5^{1/2} BATHROOMS + OFFICE

PENTHOUSES LEVEL 57-59

TOTAL SQ.FT.	3,424 SQ.FT	318 SQ.MT
A/C AREA	2,930 SQ.FT	272 SQ.MT
TERRACE	494 SQ.FT	46 SQ.MT



 ORAL REPRESENTATIONS CANNOT BE RELIED UPON AS CORRECTLY STATING THE REPRESENTATIONS OF THE DEVELOPER. FOR CORRECT REPRESENTATIONS, MAKE REFERENCE TO THIS BROCHURE AND TO THE DOCUMENTS REQUIRED BY SECTION 718.503, FLORIDA STATUTES, TO BE FURNISHED BY A DEVELOPER TO A BUYER OR LESSEE.

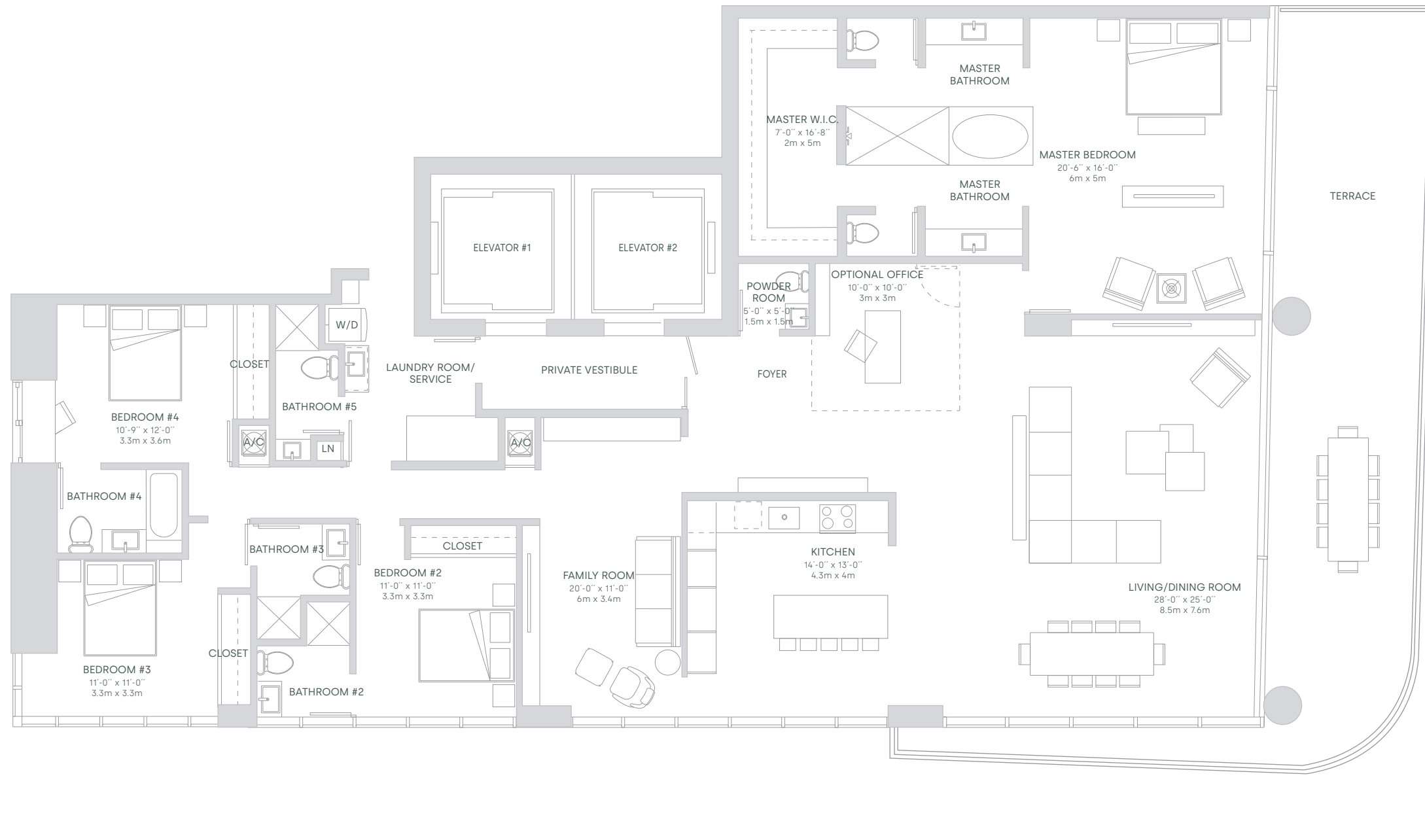
This is not intended to be an offer to sell, or solicitation to buy, condominium units to residents of any jurisdiction where prohibited by law, and your eligibility for purchase will depend upon your state of residency. The offering is made only by the prospectus for the condominium and no statement should be relied upon if not made in the prospectus. Stated interior square footage is measured to the exterior face of exterior walls and to the centerline of interior demising walls or to the exterior face of walls adjoining corridors or other common elements or shared facilities without excluding areas that may be occupied by columns or other structural components. This method of measurement varies from, and is larger than, the dimensions that would be determined by using the description and the definition of the Unit set forth in the Declaration (which generally only includes the interior airspace between the perimeter walls and excludes structural components). For reference, the area of the unit, determined in accordance with the unit boundaries set forth in the Declaration is set forth in Exhibit "3" to the Declaration. All dimensions are approximate and may vary with actual construction. Note that measurements of rooms set forth on this floor plan are generally taken at the greatest points of each given room (as if the room were a perfect rectangle), without regard for any cutouts or irregularities. Accordingly, the area of the actual room will typically be smaller than the product obtained by multiplying the stated length times width. The size and configuration of balconies and terraces varies throughout the building. The balcony depicted above is among the larger balconies and is not reflective of the actual size or configuration of the balcony for each unit of this unit type. For the actual size and configuration of the balcony for your unit, see Exhibit "2" to the Declaration of Condominium. All floor plans and development plans are subject to change. The Developer expressly reserves the right to make modifications, revisions, and changes it deems desirable in its sole and absolute discretion. Certain amenities and/or services require a separate Club membership and/or payment of certain use or access fees. All depictions of furnishings, appliances, built-ins, counters, and other matters of detail, including, without limitation, items of finish and decoration, are conceptual only and are not necessarily included in each Unit. Consult your prospectus and Purchase Agreement.

PENTHOUSES
LEVEL 57-59

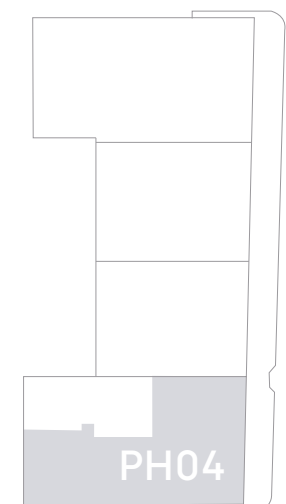
TOTAL SQ.FT.	3,824 SQ.FT	356 SQ.MT
A/C AREA	3,289 SQ.FT	306 SQ.MT
TERRACE	535 SQ.FT	50 SQ.MT

PH 04

4 BEDROOMS
5^{1/2} BATHROOMS + OFFICE



BISCAYNE BAY



 ORAL REPRESENTATIONS CANNOT BE RELIED UPON AS CORRECTLY STATING THE REPRESENTATIONS OF THE DEVELOPER. FOR CORRECT REPRESENTATIONS, MAKE REFERENCE TO THIS BROCHURE AND TO THE DOCUMENTS REQUIRED BY SECTION 718.503, FLORIDA STATUTES, TO BE FURNISHED BY A DEVELOPER TO A BUYER OR LESSEE.

This is not intended to be an offer to sell, or solicitation to buy, condominium units to residents of any jurisdiction where prohibited by law, and your eligibility for purchase will depend upon your state of residency. The offering is made only by the prospectus for the condominium and no statement should be relied upon if not made in the prospectus. Stated interior square footage is measured to the exterior face of exterior walls and to the centerline of interior demising walls or to the exterior face of walls adjoining corridors or other common elements or shared facilities without excluding areas that may be occupied by columns or other structural components. This method of measurement varies from, and is larger than, the dimensions that would be determined by using the description and the definition of the Unit set forth in the Declaration (which generally only includes the interior airspace between the perimeter walls and excludes structural components). For reference, the area of the unit, determined in accordance with the unit boundaries set forth in the Declaration is set forth in Exhibit "3" to the Declaration. All dimensions are approximate and may vary with actual construction. Note that measurements of rooms set forth on this floor plan are generally taken at the greatest points of each given room (as if the room were a perfect rectangle), without regard for any cutouts or irregularities. Accordingly, the area of the actual room will typically be smaller than the product obtained by multiplying the stated length times width. The size and configuration of balconies and terraces varies throughout the building. The balcony depicted above is among the larger balconies and is not reflective of the actual size or configuration of the balcony for each unit of this unit type. For the actual size and configuration of the balcony for your unit, see Exhibit "2" to the Declaration of Condominium. All floor plans and development plans are subject to change. The Developer expressly reserves the right to make modifications, revisions, and changes it deems desirable in its sole and absolute discretion. Certain amenities and/or services require a separate Club membership and/or payment of certain use or access fees. All depictions of furnishings, appliances, built-ins, counters, and other matters of detail, including, without limitation, items of finish and decoration, are conceptual only and are not necessarily included in each Unit. Consult your prospectus and Purchase Agreement.