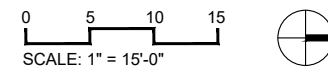




PHASE I SOUTH TOWER
 LOWER 1
 LEVEL 7-8-9 (ALTERNATE)
 3 LEVELS

ST. REGIS RESIDENCES_SUNNY ISLES

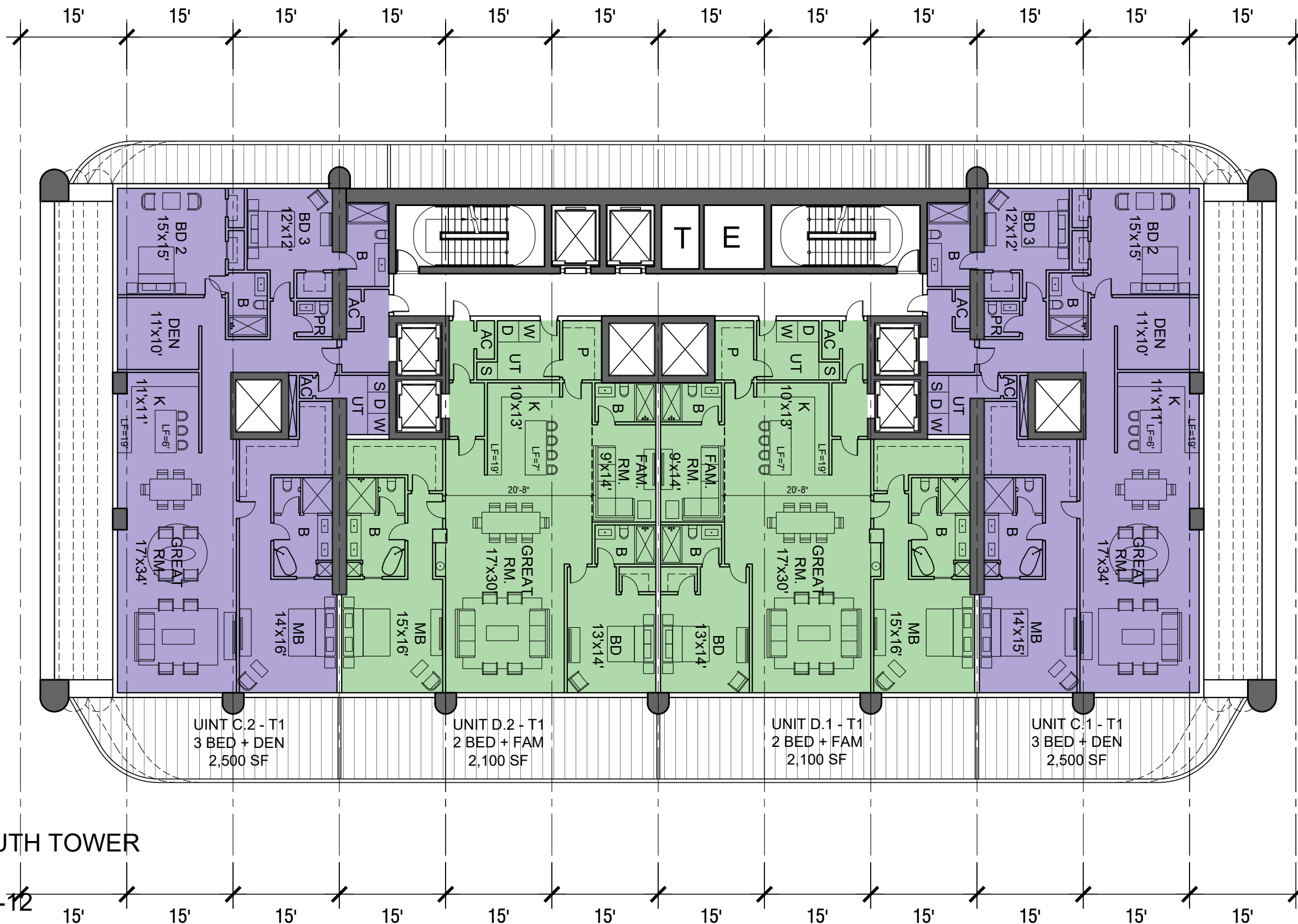


A 2022.02.16



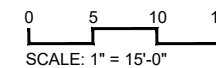
ALL DESIGNS INDICATED IN THESE DRAWINGS ARE PROPERTY OF ARQUITECTONICA INTERNATIONAL CORP. NO COPIES, TRANSMISSIONS, REPRODUCTIONS OR ELECTRONIC MANIPULATION OF ANY PORTION OF THESE DRAWINGS IN THE WHOLE OR IN PART ARE TO BE MADE WITHOUT THE EXPRESS WRITTEN AUTHORIZATION OF ARQUITECTONICA INTERNATIONAL CORP. DESIGN INTENT SHOWN IS SUBJECT TO REVIEW AND APPROVAL OF ALL APPLICABLE LOCAL AND GOVERNMENTAL AUTHORITIES HAVING JURISDICTION. ALL COPYRIGHTS RESERVED © 2020. THE DATA INCLUDED IN THIS STUDY IS CONCEPTUAL IN NATURE AND WILL CONTINUE TO BE MODIFIED THROUGHOUT THE COURSE OF THE PROJECTS DEVELOPMENT WITH THE EVENTUAL INTEGRATION OF STRUCTURAL, MEP AND LIFE SAFETY SYSTEMS. AS THESE ARE FURTHER REFINED, THE NUMBERS WILL BE ADJUSTED ACCORDINGLY.

ARQUITECTONICA



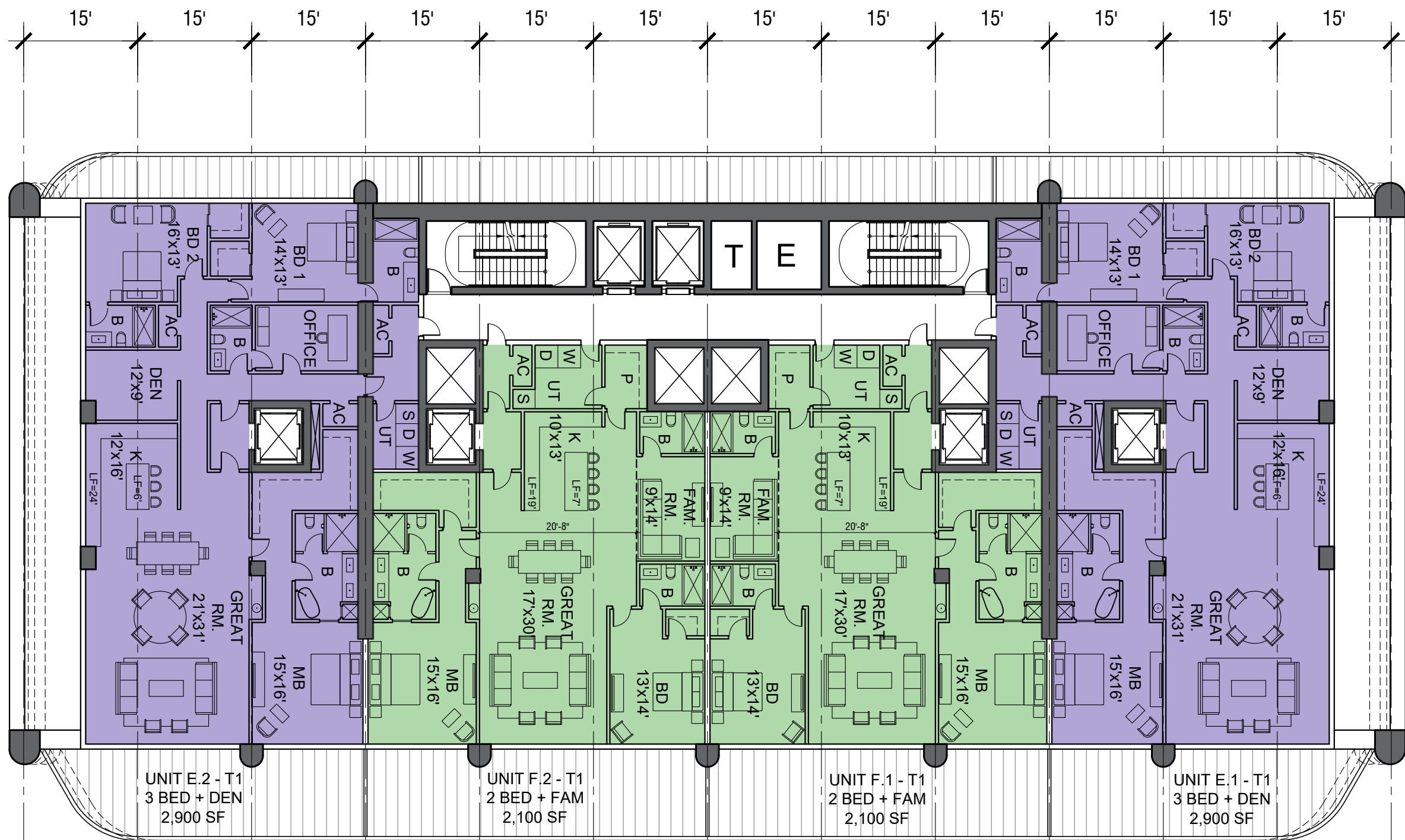
PHASE I SOUTH TOWER
LOWER 2
LEVEL 10-11-12
3 LEVELS

ST. REGIS RESIDENCES_SUNNY ISLES



B

2022.02.16



PHASE I SOUTH TOWER
 LOWER 3
 LEVEL 13-16
 4 LEVELS

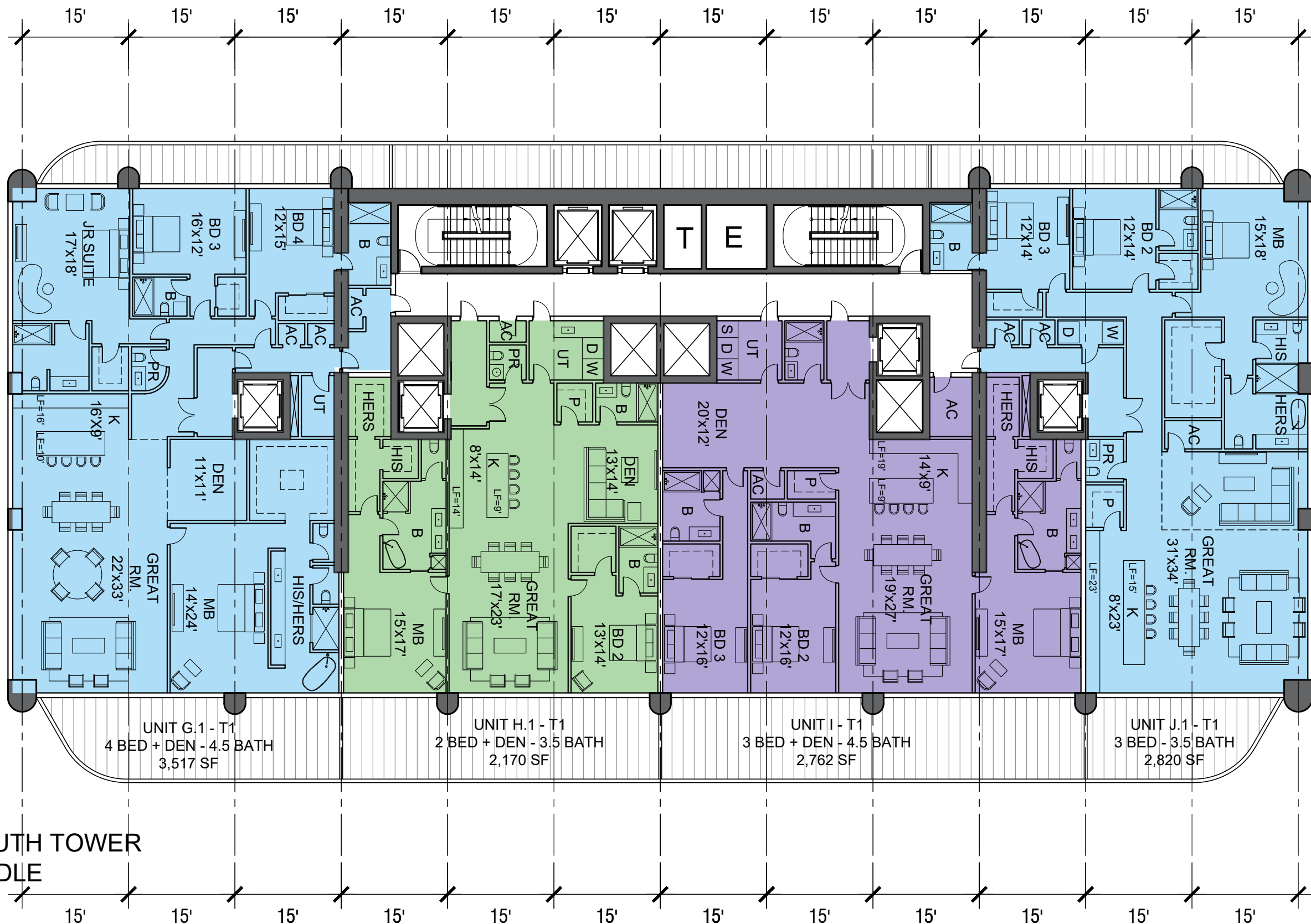
UNIT E.2 - T1
 3 BED + DEN
 2,900 SF

UNIT F.2 - T1
 2 BED + FAM
 2,100 SF

UNIT F.1 - T1
 2 BED + FAM
 2,100 SF

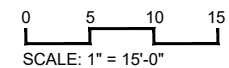
UNIT E.1 - T1
 3 BED + DEN
 2,900 SF





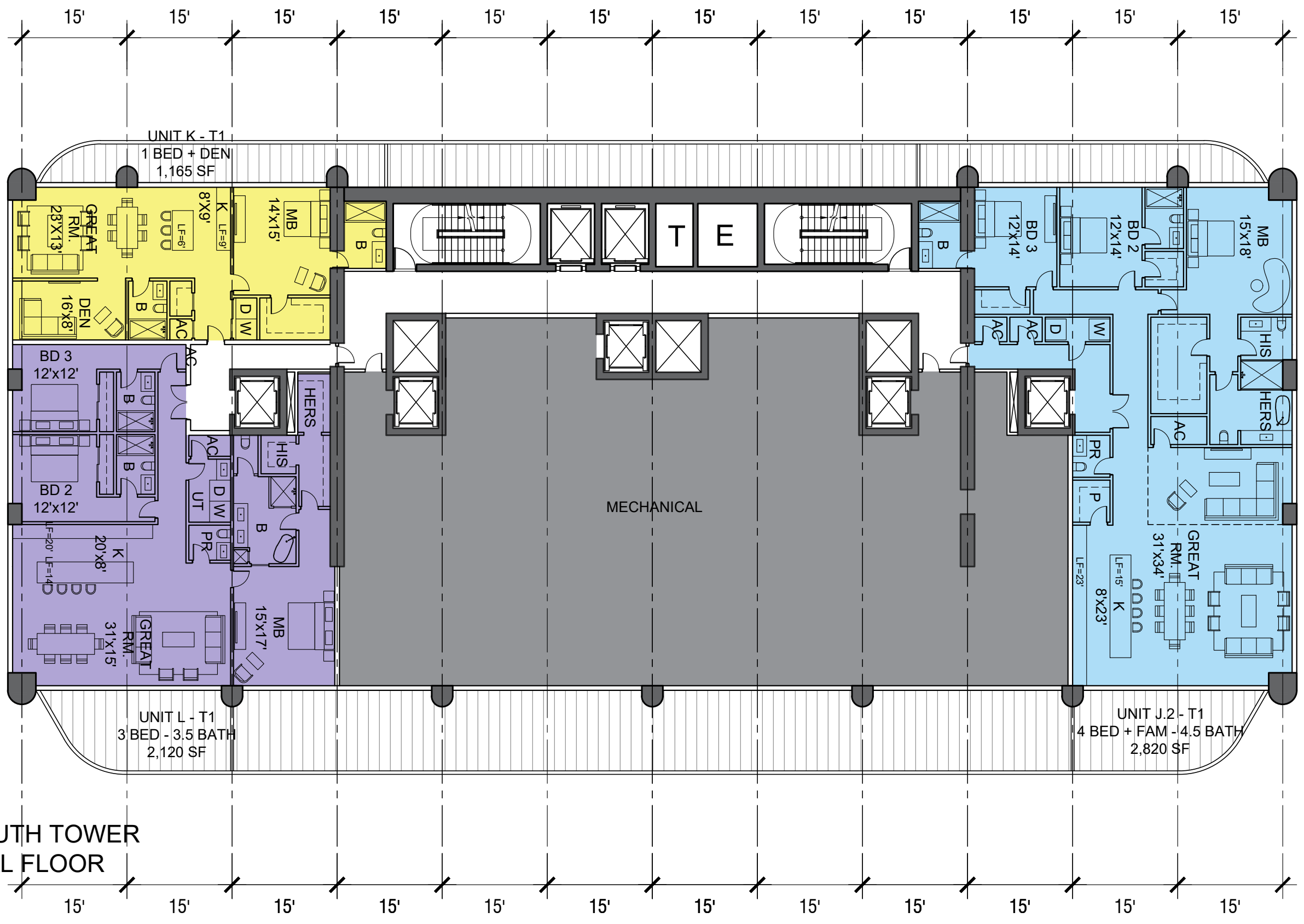
PHASE I SOUTH TOWER
 LOWER MIDDLE
 LEVEL 17-32
 16 LEVELS

ST. REGIS RESIDENCES_SUNNY ISLES



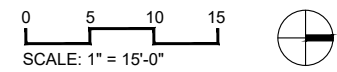
D

2022.02.16



PHASE I SOUTH TOWER
 MECHANICAL FLOOR
 LEVEL 33
 1 LEVEL

ST. REGIS RESIDENCES_SUNNY ISLES

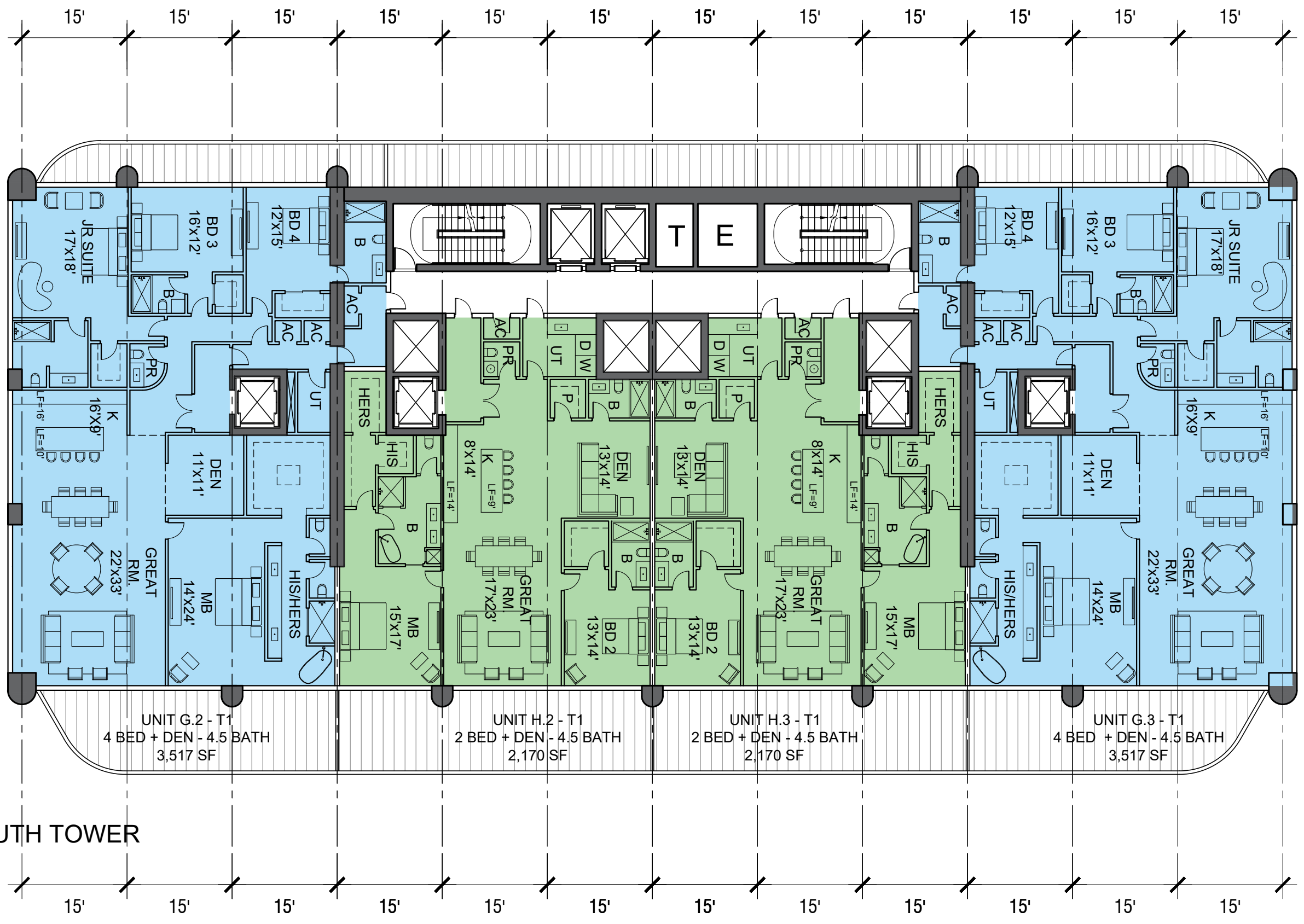


E 2022.02.16



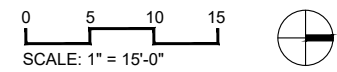
ALL DESIGNS INDICATED IN THESE DRAWINGS ARE PROPERTY OF ARQUITECTONICA INTERNATIONAL CORP. NO COPIES, TRANSMISSIONS, REPRODUCTIONS OR ELECTRONIC MANIPULATION OF ANY PORTION OF THESE DRAWINGS IN THE WHOLE OR IN PART ARE TO BE MADE WITHOUT THE EXPRESS WRITTEN AUTHORIZATION OF ARQUITECTONICA INTERNATIONAL CORP. DESIGN INTENT SHOWN IS SUBJECT TO REVIEW AND APPROVAL OF ALL APPLICABLE LOCAL AND GOVERNMENTAL AUTHORITIES HAVING JURISDICTION. ALL COPYRIGHTS RESERVED © 2020. THE DATA INCLUDED IN THIS STUDY IS CONCEPTUAL IN NATURE AND WILL CONTINUE TO BE MODIFIED THROUGHOUT THE COURSE OF THE PROJECTS DEVELOPMENT WITH THE EVENTUAL INTEGRATION OF STRUCTURAL, MEP AND LIFE SAFETY SYSTEMS. AS THESE ARE FURTHER REFINED, THE NUMBERS WILL BE ADJUSTED ACCORDINGLY.

ARQUITECTONICA



PHASE I SOUTH TOWER
MIDDLE
LEVEL 34-42
9 LEVELS

ST. REGIS RESIDENCES_SUNNY ISLES

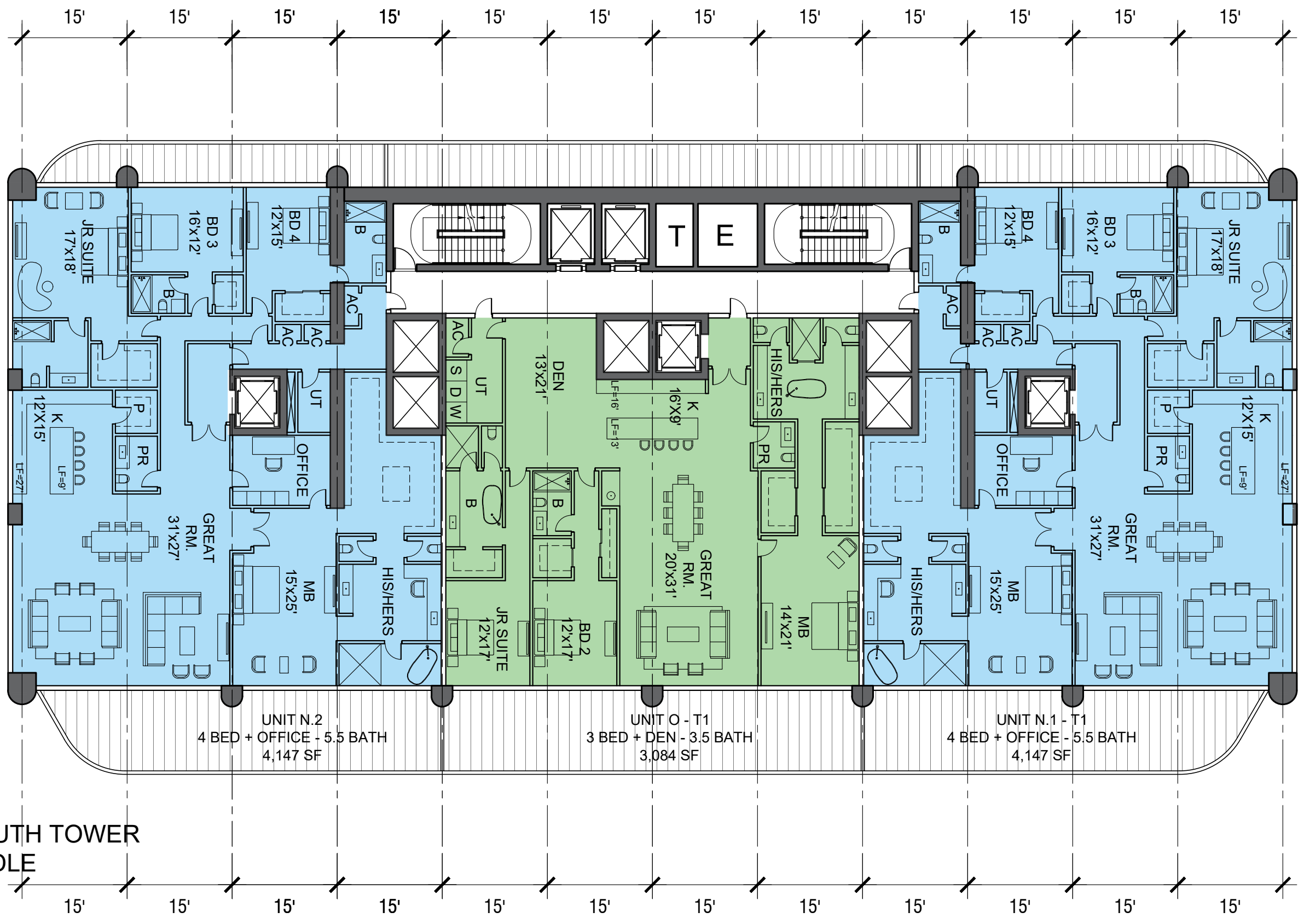


F 2022.02.16



ALL DESIGNS INDICATED IN THESE DRAWINGS ARE PROPERTY OF ARQUITECTONICA INTERNATIONAL CORP. NO COPIES, TRANSMISSIONS, REPRODUCTIONS OR ELECTRONIC MANIPULATION OF ANY PORTION OF THESE DRAWINGS IN THE WHOLE OR IN PART ARE TO BE MADE WITHOUT THE EXPRESS WRITTEN AUTHORIZATION OF ARQUITECTONICA INTERNATIONAL CORP. DESIGN INTENT SHOWN IS SUBJECT TO REVIEW AND APPROVAL OF ALL APPLICABLE LOCAL AND GOVERNMENTAL AUTHORITIES HAVING JURISDICTION. ALL COPYRIGHTS RESERVED © 2020. THE DATA INCLUDED IN THIS STUDY IS CONCEPTUAL IN NATURE AND WILL CONTINUE TO BE MODIFIED THROUGHOUT THE COURSE OF THE PROJECTS DEVELOPMENT WITH THE EVENTUAL INTEGRATION OF STRUCTURAL, MEP AND LIFE SAFETY SYSTEMS. AS THESE ARE FURTHER REFINED, THE NUMBERS WILL BE ADJUSTED ACCORDINGLY.





PHASE I SOUTH TOWER
 UPPER MIDDLE
 LEVEL 43-50
 8 LEVELS

UNIT N.2
 4 BED + OFFICE - 5.5 BATH
 4,147 SF

UNIT O - T1
 3 BED + DEN - 3.5 BATH
 3,084 SF

UNIT N.1 - T1
 4 BED + OFFICE - 5.5 BATH
 4,147 SF

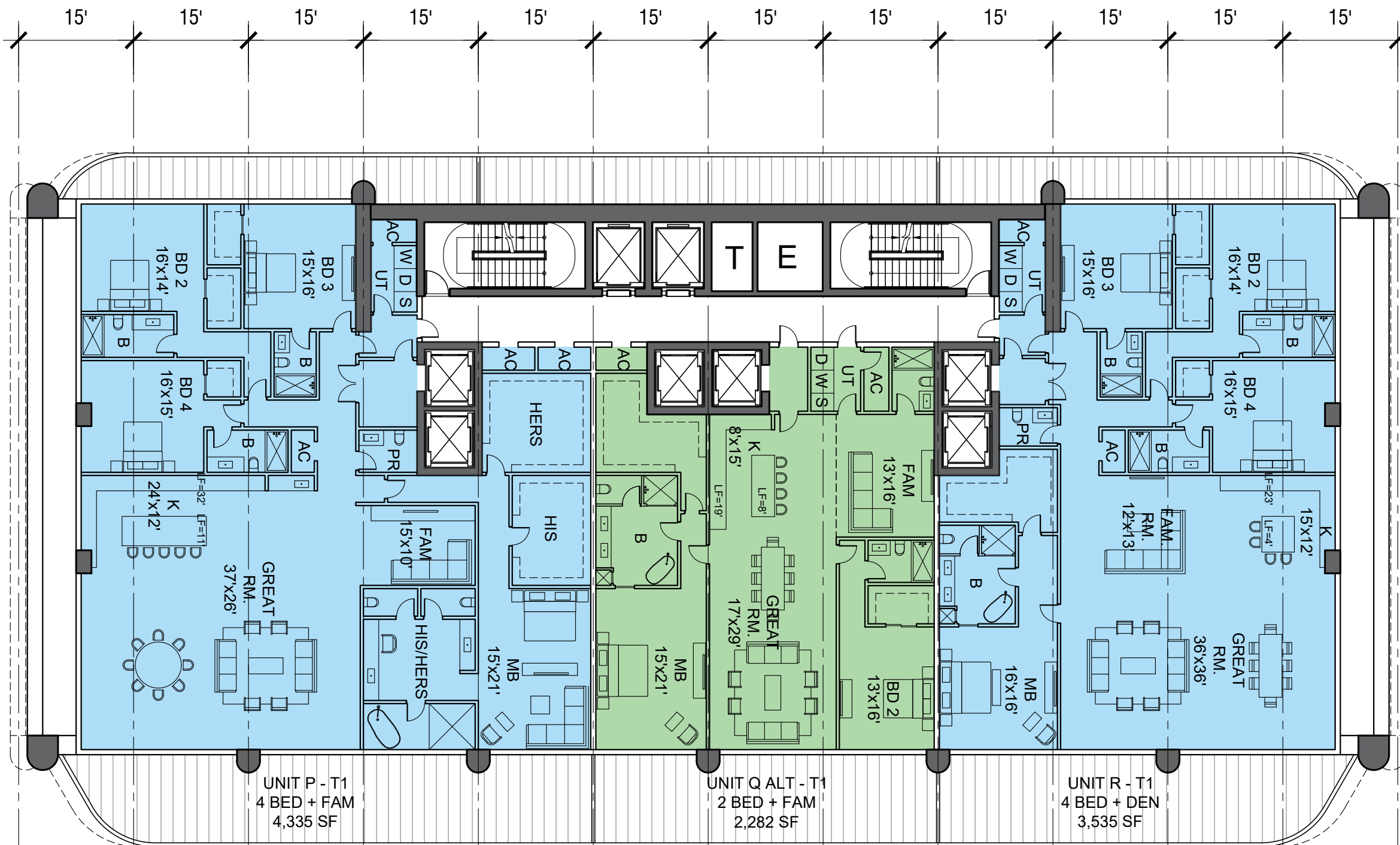


PHASE I SOUTH TOWER
 UPPER 1
 LEVEL 51-55
 5 LEVELS

UNIT P - T1
 4 BED + FAM
 4,335 SF

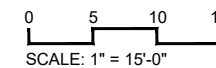
UNIT Q - T1
 2 BED + FAM
 2,282 SF

UNIT R - T1
 4 BED + DEN
 3,535 SF



PHASE I SOUTH TOWER
 UPPER 1
 LEVEL 51-55 (ALTERNATE)
 5 LEVELS

ST. REGIS RESIDENCES_SUNNY ISLES



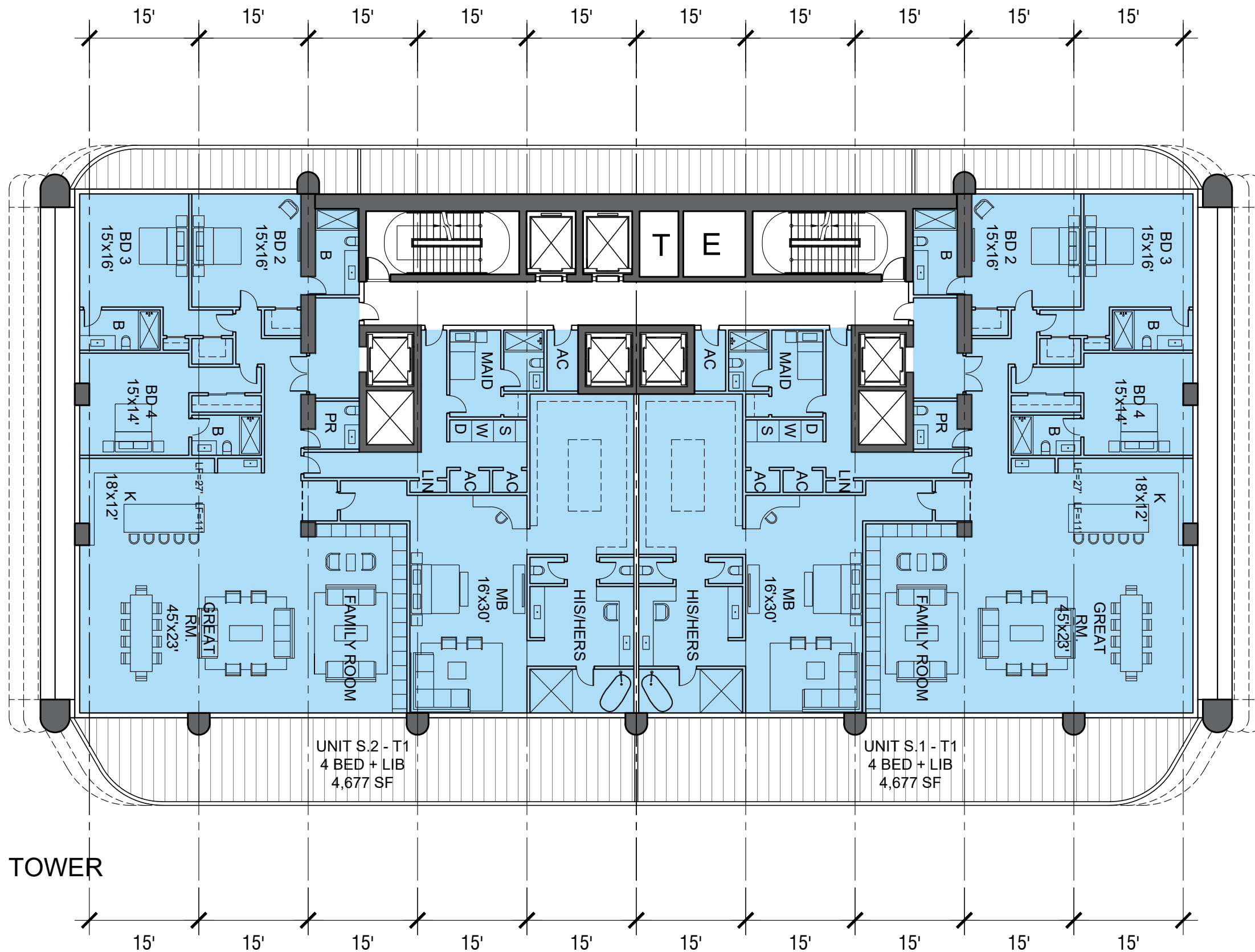
H

2022.02.16



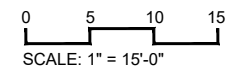
ALL DESIGNS INDICATED IN THESE DRAWINGS ARE PROPERTY OF ARQUITECTONICA INTERNATIONAL CORP. NO COPIES, TRANSMISSIONS, REPRODUCTIONS OR ELECTRONIC MANIPULATION OF ANY PORTION OF THESE DRAWINGS IN THE WHOLE OR IN PART ARE TO BE MADE WITHOUT THE EXPRESS WRITTEN AUTHORIZATION OF ARQUITECTONICA INTERNATIONAL CORP. DESIGN INTENT SHOWN IS SUBJECT TO REVIEW AND APPROVAL OF ALL APPLICABLE LOCAL AND GOVERNMENTAL AUTHORITIES HAVING JURISDICTION. ALL COPYRIGHTS RESERVED © 2020. THE DATA INCLUDED IN THIS STUDY IS CONCEPTUAL IN NATURE AND WILL CONTINUE TO BE MODIFIED THROUGHOUT THE COURSE OF THE PROJECTS DEVELOPMENT WITH THE EVENTUAL INTEGRATION OF STRUCTURAL, MEP AND LIFE SAFETY SYSTEMS. AS THESE ARE FURTHER REFINED, THE NUMBERS WILL BE ADJUSTED ACCORDINGLY.

ARQUITECTONICA

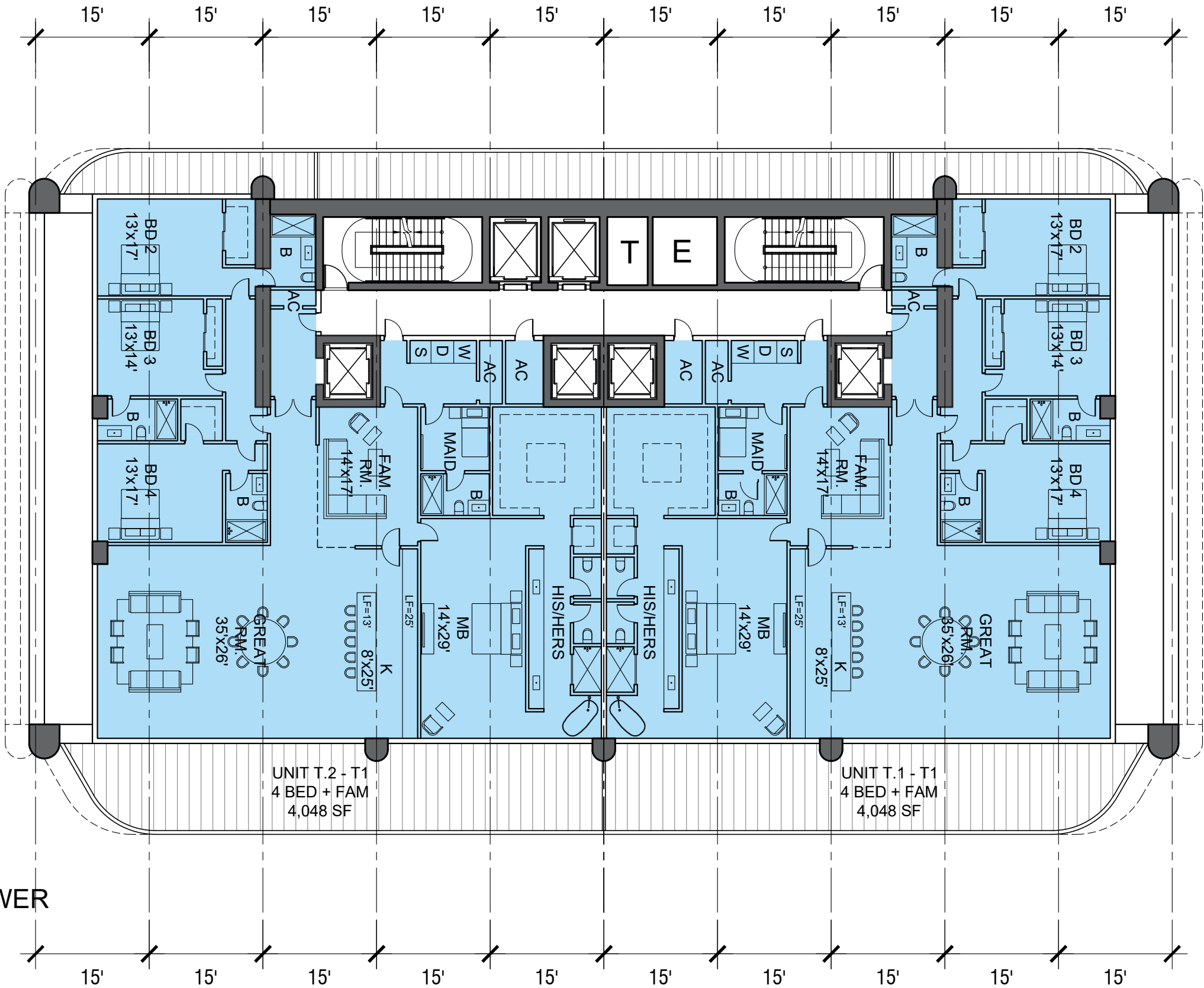


PHASE I SOUTH TOWER
 UPPER 2
 LEVEL 56-57-58
 3 LEVELS

ST. REGIS RESIDENCES_SUNNY ISLES



2022.02.16



PHASE I SOUTH TOWER
 UPPER 3
 LEVEL 59-60
 2 LEVELS

UNIT T.2 - T1
 4 BED + FAM
 4,048 SF

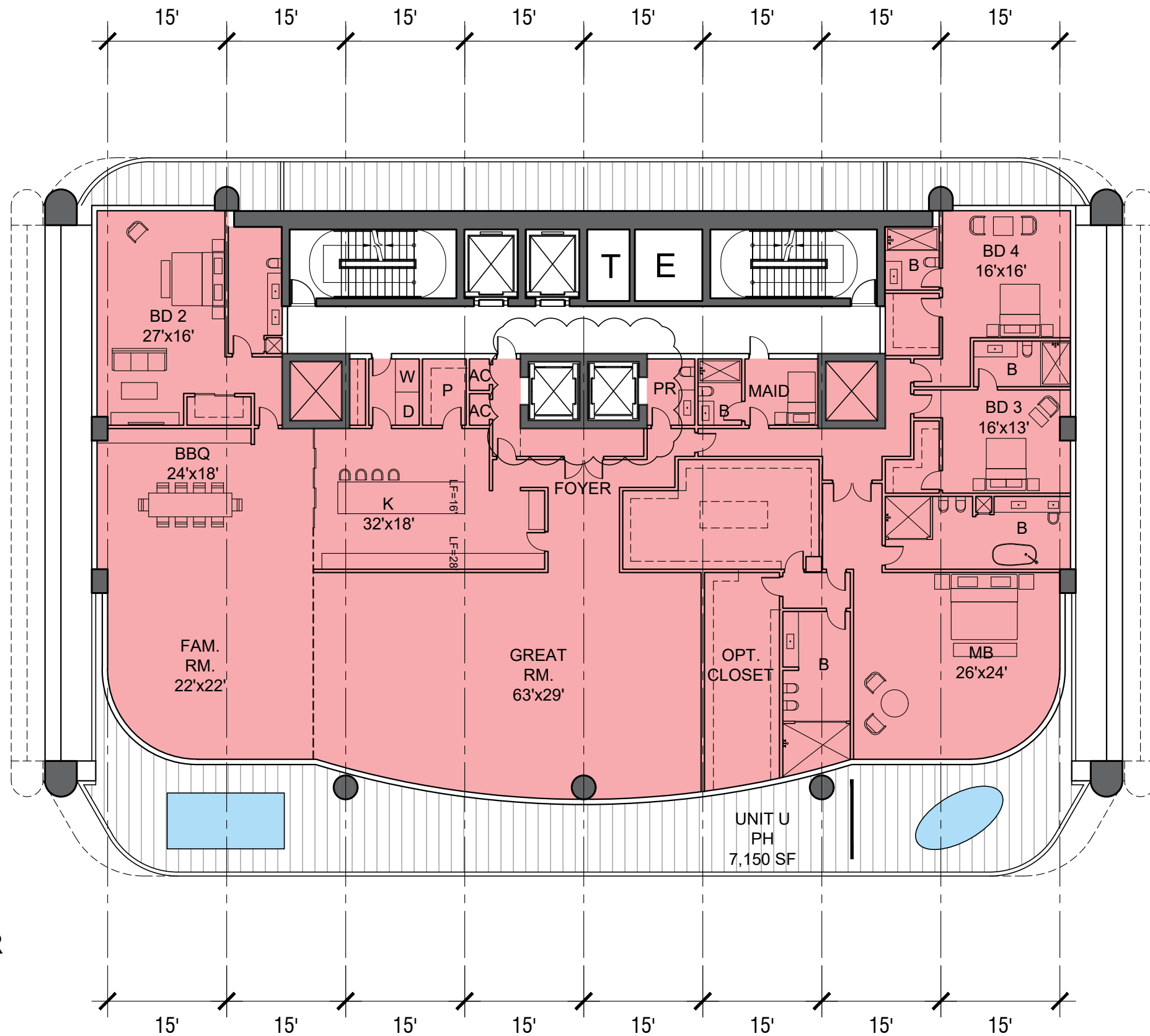
UNIT T.1 - T1
 4 BED + FAM
 4,048 SF



UNIT T.2 ALT - T1
4 BED + FAM
6,536 SF

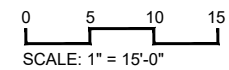
PHASE I SOUTH TOWER
UPPER 3
LEVEL 59-60 (ALTERNATE)
2 LEVELS





PHASE I SOUTH TOWER
 PENTHOUSE
 LEVEL 61-62
 2 LEVELS

ST. REGIS RESIDENCES_SUNNY ISLES



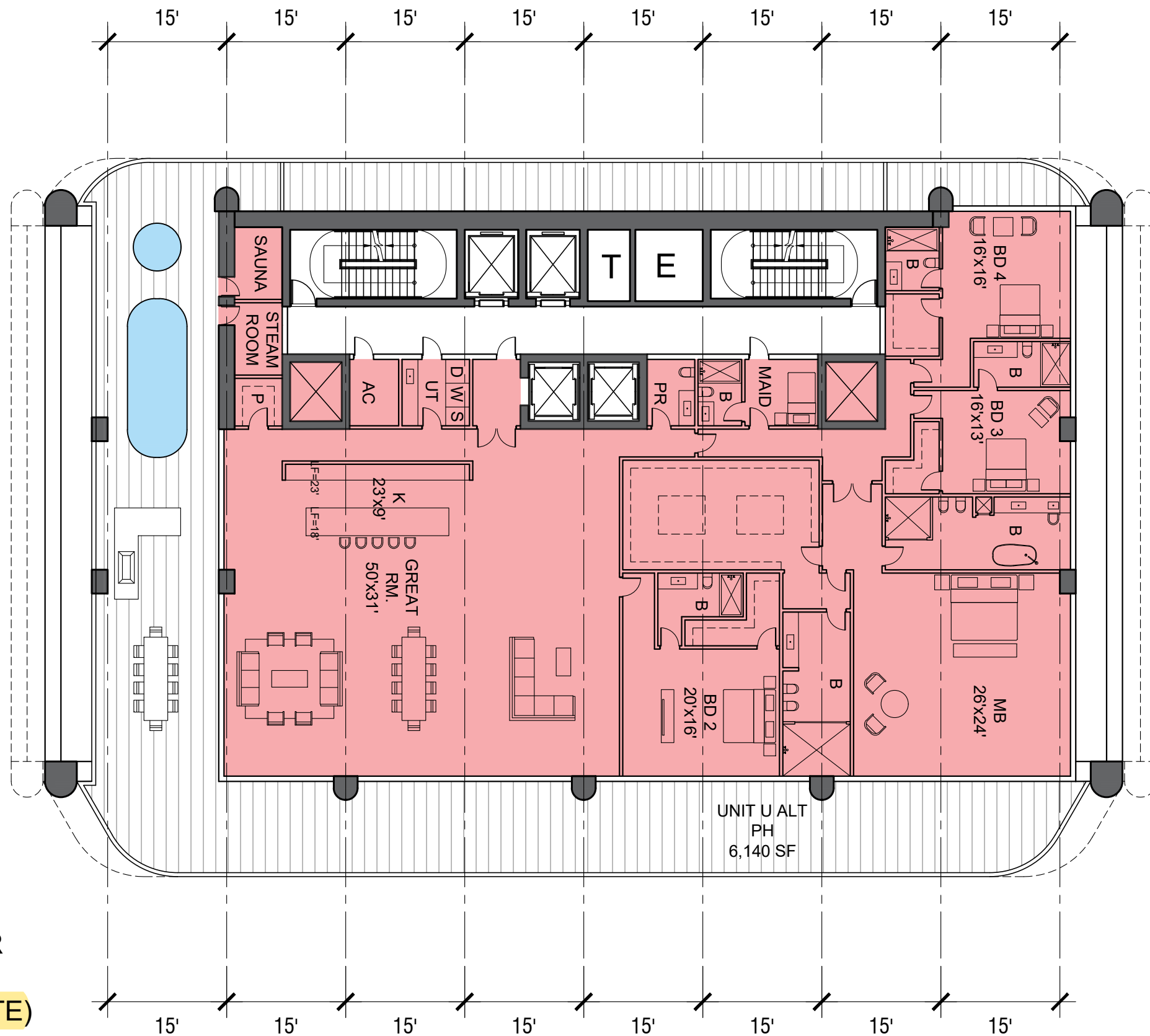
K

2022.02.16



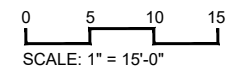
ALL DESIGNS INDICATED IN THESE DRAWINGS ARE PROPERTY OF ARQUITECTONICA INTERNATIONAL CORP. NO COPIES, TRANSMISSIONS, REPRODUCTIONS OR ELECTRONIC MANIPULATION OF ANY PORTION OF THESE DRAWINGS IN THE WHOLE OR IN PART ARE TO BE MADE WITHOUT THE EXPRESS WRITTEN AUTHORIZATION OF ARQUITECTONICA INTERNATIONAL CORP. DESIGN INTENT SHOWN IS SUBJECT TO REVIEW AND APPROVAL OF ALL APPLICABLE LOCAL AND GOVERNMENTAL AUTHORITIES HAVING JURISDICTION. ALL COPYRIGHTS RESERVED © 2020. THE DATA INCLUDED IN THIS STUDY IS CONCEPTUAL IN NATURE AND WILL CONTINUE TO BE MODIFIED THROUGHOUT THE COURSE OF THE PROJECTS DEVELOPMENT WITH THE EVENTUAL INTEGRATION OF STRUCTURAL, MEP AND LIFE SAFETY SYSTEMS. AS THESE ARE FURTHER REFINED, THE NUMBERS WILL BE ADJUSTED ACCORDINGLY.

ARQUITECTONICA



PHASE I SOUTH TOWER
 PENTHOUSE
 LEVEL 61-62 (ALTERNATE)
 2 LEVELS

ST. REGIS RESIDENCES_SUNNY ISLES



K

2022.02.16



ALL DESIGNS INDICATED IN THESE DRAWINGS ARE PROPERTY OF ARQUITECTONICA INTERNATIONAL CORP. NO COPIES, TRANSMISSIONS, REPRODUCTIONS OR ELECTRONIC MANIPULATION OF ANY PORTION OF THESE DRAWINGS IN THE WHOLE OR IN PART ARE TO BE MADE WITHOUT THE EXPRESS WRITTEN AUTHORIZATION OF ARQUITECTONICA INTERNATIONAL CORP. DESIGN INTENT SHOWN IS SUBJECT TO REVIEW AND APPROVAL OF ALL APPLICABLE LOCAL AND GOVERNMENTAL AUTHORITIES HAVING JURISDICTION. ALL COPYRIGHTS RESERVED © 2020. THE DATA INCLUDED IN THIS STUDY IS CONCEPTUAL IN NATURE AND WILL CONTINUE TO BE MODIFIED THROUGHOUT THE COURSE OF THE PROJECTS DEVELOPMENT WITH THE EVENTUAL INTEGRATION OF STRUCTURAL, MEP AND LIFE SAFETY SYSTEMS. AS THESE ARE FURTHER REFINED, THE NUMBERS WILL BE ADJUSTED ACCORDINGLY.

ARQUITECTONICA