



SLS LUX<sup>™</sup>  
BRICKELL

OBTAIN THE PROPERTY REPORT REQUIRED BY THE FEDERAL LAW AND READ IT BEFORE SIGNING ANYTHING. NO FEDERAL AGENCY HAS JUDGED THE MERITS OR VALUE, IF ANY, OF THIS PROPERTY.

ORAL REPRESENTATIONS CANNOT BE RELIED UPON AS CORRECTLY STATING THE REPRESENTATIONS OF THE DEVELOPER. FOR CORRECT REPRESENTATIONS, MAKE REFERENCE TO THIS BROCHURE AND TO THE DOCUMENTS REQUIRED BY SECTION 718.503, FLORIDA STATUTES, TO BE FURNISHED BY A DEVELOPER TO A BUYER OR LESSEE.

CAPTIVATING *art* SEDUCTIVE  
ALLURING ENTICING MAGNETIC  
*ultimate privileges*  
*elevated design* SELECTIVE BEGUILING  
GLAMOROUS *spoiling moment* *elegant*  
EXCLUSIVE *enviable service*  
ONE-OF-A-KIND *art*  
ENTICING  
*enviable service* BEGUILING CAPTIVATING  
ALLURING *elegant* *enviable service* *elevated design*  
ONE-OF-A-KIND *glamorous* ELEGANT  
MAGNETIC *spoiling moment* SUBLIME



“TO BE SURROUNDED BY  
WORLD-CLASS ART IS AMONG  
THE GREATEST LUXURIES IN LIFE.”

— JORGE PÉREZ  
FOUNDER, CHAIRMAN, AND CEO OF THE RELATED GROUP







## INTRODUCING SLS LUX: DESIGNED TO INDULGE THE SENSES

Just steps away from upcoming Brickell City Centre, Miami's newest and most extravagant shopping and lifestyle destination, SLS LUX offers residents ultimate access to an oasis of exclusive privileges. Sophisticated designer interiors, original works of art by contemporary masters, private rooftop pool terraces, celebrity-chef restaurants, and limousine service to a chic private beach club are among the many features, amenities, and services designed to indulge the most discriminating clientele.

### BUILDING FEATURES

- Located in the heart of Brickell between upcoming Brickell City Centre's high-end retail and restaurants, and Mary Brickell Village shopping center.
- 57-story tower designed by internationally renowned architecture firm Arquitectonica, featuring the first LED façade by prominent lighting artist Ana Isabel Martinez.
- Interiors designed by Yabu Pushelberg.
- Museum-quality art in all common areas, including works by renowned artists Fernando Botero and Matias Duville and exterior mural installation by Fabian Burgos.
- Ground floor restaurant by celebrated chef Katsuya Uechi and cocktail lounge by SBar.
- 450 luxury condominiums featuring private elevators.
- A limited collection of 12 penthouse residences on the top three floors with 12-foot ceilings, custom gourmet kitchens, and panoramic views of the Miami skyline, Biscayne Bay, and Atlantic Ocean.
- Two assigned self-parking spaces available for most units in secured parking garage, or optional complimentary 24-hour valet parking services.
- Rental program managed by sbe available for Designer Suites.

### NEIGHBORHOOD FEATURES AND SERVICES

- Located in the heart of Brickell, between the upcoming Brickell City Centre luxury lifestyle mall and Mary Brickell Village.
- Steps from Miami Metro Mover Station and Metro Rail.
- Steps from the upcoming Whole Foods grocery store.
- Secure bike-storage room.





BRICKELL: MIAMI'S PREMIER  
DESTINATION FOR LUX LIVING

High fashion, fine dining, and chic entertainment all come together in Brickell, Miami's most exciting and sophisticated downtown neighborhood. Elite corporate headquarters and top international financial institutions attract the most powerful and savvy business people, and the upcoming 5 million-square-foot Brickell City Centre will cater to Brickell's refined residents with luxury boutiques and exceptional restaurants and cafés.





THE BRILLIANT BRICKELL LIFESTYLE ...  
ENDLESSLY ENTERTAINING

In Brickell the streets are alive with all-day, all-night entertainment. Brilliant new restaurants, chic lounges, and cool nightclubs offer an endless array of enticing choices. From luxury lifestyle destinations like the upcoming Brickell City Centre to vibrant outdoor shopping centers like Mary Brickell Village, everything you need and desire is steps away.





“SLS LUX IS AN OASIS OF ULTIMATE LUXURY SURROUNDED BY THE VERY  
BEST OF BRICKELL ... IT IS AN ELEGANTLY DESIGNED, EXCLUSIVE WORLD  
OF ITS OWN DEFINED BY PRIVILEGE AND INDULGENCE.”

*JORGE PÉREZ*  
*FOUNDER, CHAIRMAN, AND CEO OF THE RELATED GROUP*





SLS LUX: AT THE CENTER  
OF EVERYTHING YOU DESIRE

Located in the heart of Brickell, SLS LUX puts you at the center of Miami with convenient access to hot destinations including South Beach, the Design District, and Wynwood, as well as key transportation hubs at Port Miami and Miami International Airport.

DINING

- |                        |                                    |                                    |                        |
|------------------------|------------------------------------|------------------------------------|------------------------|
| 01. Il Gabbiano        | 09. The River Oyster Bar           | 17. Dolores Lolita                 | 27. Gelatto Nostro     |
| 02. Scalina Ristorante | 10. The Oceanaire Seafood Room     | 18. Morton's The Steakhouse        | 28. The Hoxton         |
| 03. Zuma               | 11. P.F. Chang's China Bistro      | 19. EOS at Viceroy                 | 29. Mare Nostrum       |
| 04. DB Bistro Moderne  | 12. Rosa Mexicano                  | 20. Truluck's Restaurant           | 30. Rosa Vito          |
| 05. Area 31            | 13. Perricone's Marketplace & Café | 21. Pizza Rustica                  | 31. Toscana Divino     |
| 06. Capital Grille     | 14. Segafredo Espresso Café        | 22. Brickell Bridge Bistro and Bar | 32. Rosinella Downtown |
| 07. Azul               | 15. Novecento                      | 23. Volare Italian Restaurant      | 33. Pizza Piola        |
| 08. Tobacco Road       | 16. Puerto Madero                  | 24. La Lupita                      | 34. Brickell Irish Pub |
|                        |                                    | 25. Mint Leaf Indian Brasserie     | 35. Big Fish           |
|                        |                                    | 26. Suviche / Sushi & Ceviche      | 36. Crazy About You    |
|                        |                                    |                                    | 37. Blue Parrot        |





BRICKELL CITY CENTRE

Developed in partnership with Bal Harbour Shops, South Florida's most prestigious shopping mall, Brickell City Centre will be an ultra-luxurious 5 million-square-foot lifestyle destination filled with haute boutiques, fine dining restaurants, and scintillating entertainment.







*the ART of living...*  
...DESIGNED *to inspire*  
STYLE *beyond compare*





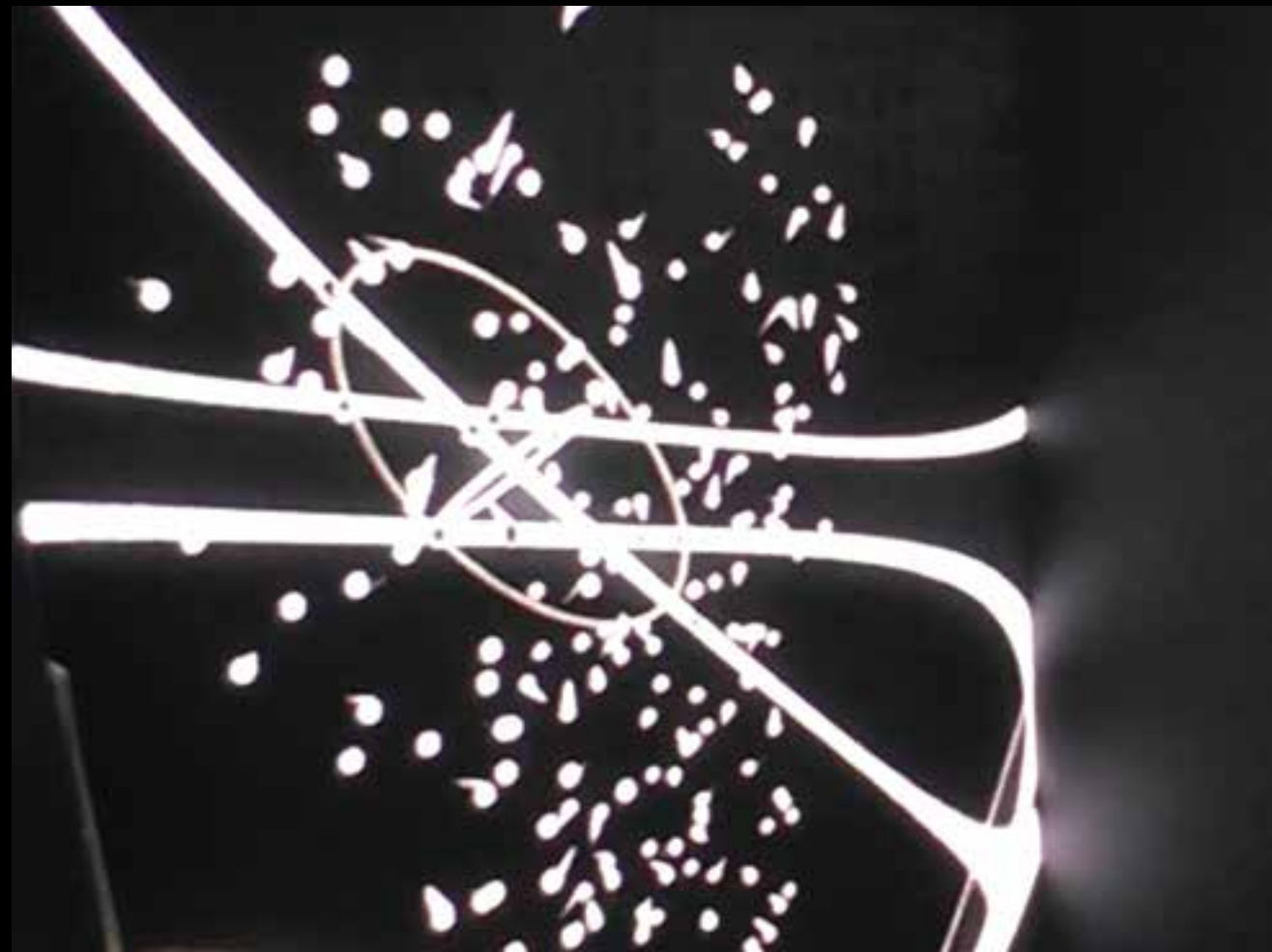
## FERNANDO BOTERO

Born in Medellin, Colombia in 1932, Fernando Botero is among the most renowned artists of his generation. While his childhood training as a matador inspired his early painting, he is best known for his sculptures of sensuously robust, exaggerated human figures, which have been exhibited in New York, Venice, Paris, Seoul, Berlin, Tokyo, Madrid, and Athens, among other global cities. He has had more than 50 exhibits worldwide, and his work is found in the collections of dozens of major museums, including the Solomon R. Guggenheim, the Museum of Modern Art, the Metropolitan Museum of Art in New York City, the Hirshhorn Museum and Sculpture Garden in Washington, D.C., the Museo d'Arte Moderna del Vaticano in Rome, the State Hermitage Museum in St. Petersburg, and the Lowe Art Museum in Coral Gables.









ANA ISABEL MARTINEZ LIGHTS UP THE NIGHT

Born in Venezuela and educated at Sorbonne Université in Paris, Ana Isabel Martinez is a successful business consultant, artist, and entrepreneur. Utilizing a multistep process that involves drawing, photography, digital imaging, video rendering, and LED technology, she creates an interactive space where viewers are faced with a world of technical effects and a spectacle of forms and dynamic information. Her work has been exhibited in numerous galleries and public spaces in cities worldwide, including Miami and Washington, D.C., in the United States and Buenos Aires, Caracas, and Lima in South America. She is also the founder of Prasadam ART, a platform for various forms of art and sculpture specifically created to assist with the transformation of humankind.





# FAÇADE BY FABIAN BURGOS

Born in Buenos Aires where he currently lives and works, Fabian Burgos is a contemporary painter recognized for his use of intense color to create vibrant geometric compositions. In his work, steady horizontal lines of color are often interrupted by circular shapes or linear patterns, creating an optical effect that mimics the constant movement and energy of the city. Burgos' work for SLS LUX will present residents and passersby with a striking vision of beauty. It will also allow him to be an active participant in Miami's urban development, a practice that has interested him since completing public art projects in Buenos Aires and Montbéliard, France. Burgos began his artistic training under the great Argentine painter, Luis Felipe Noé, and continued his studies at the Fundación Antorchas, run by Guillermo Kuitca, the contemporary Argentine artist. His work has been exhibited extensively in Argentina and has been included in shows across Latin America, in the United States, and in France.



*sublime*  
INTERIORS

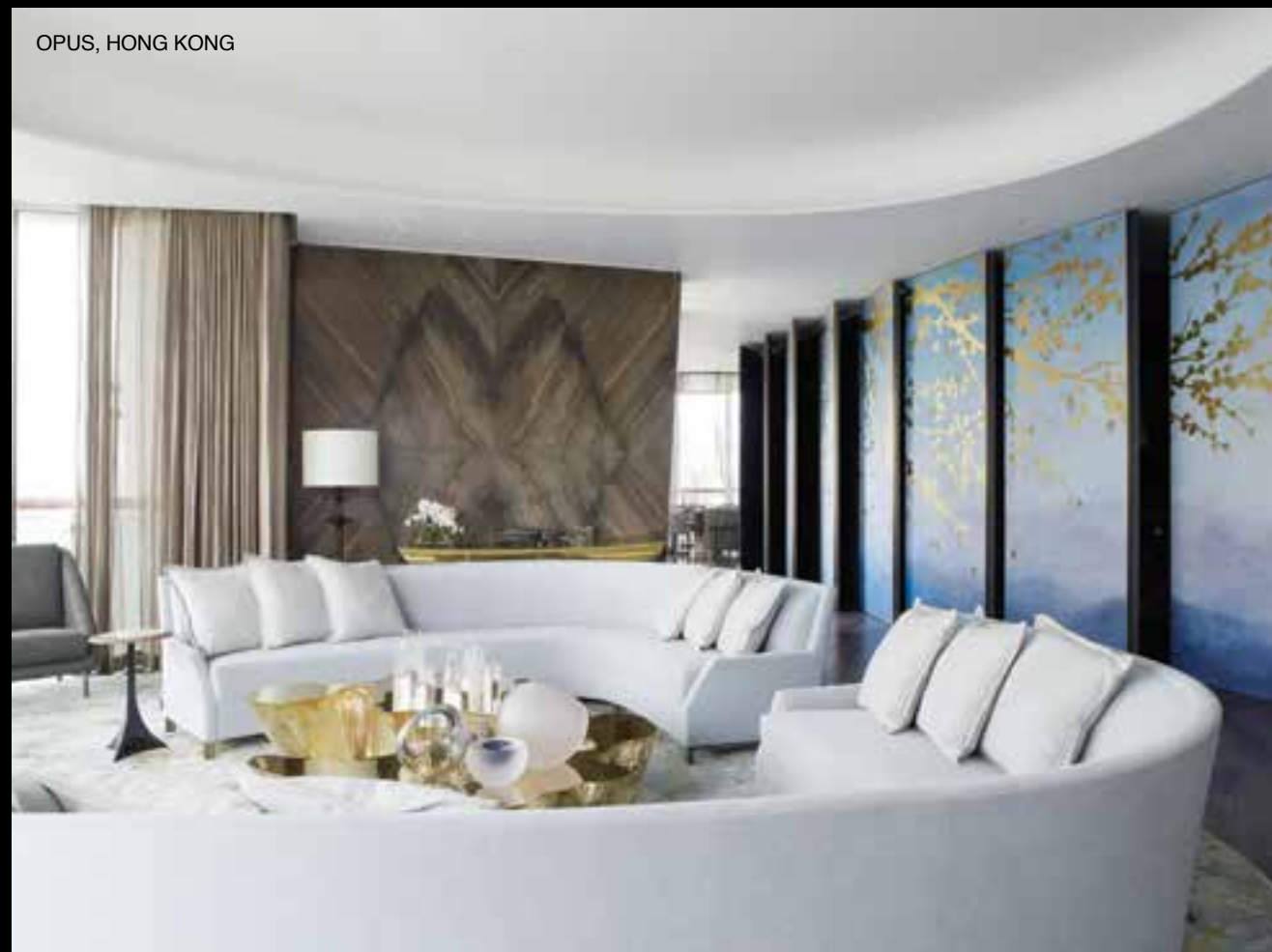




ST. REGIS, BAL HARBOUR



LAS ALCOBAS, MEXICO CITY



OPUS, HONG KONG



## YABU PUSHELBERG

Canadian interior design duo George Yabu and Glenn Pushelberg were named two of the "101 People You Must Meet in 2011" by *Town & Country* "Hot Interior Design Firm" by *Condé Nast Traveler*. *Elle Decor* put them on the "A-List." Their client roster is filled with visionaries and innovators of hotel groups and luxury retail brands, including Ian Schrager, Four Seasons, St. Regis, Barneys, Tiffany's, Jean-Georges Vongerichten, and Daniel Boulud. Described by architect Robert Champagne, AIA, as "the most creative designers out there today—the ones everyone is looking to for inspiration for luxurious residential and commercial interiors," they are also James Beard Award winners for excellence in restaurant design and have been inducted into Interior Design's "Hall of Fame."



APOGEE, MIAMI BEACH



TRUMP HOLLYWOOD, HOLLYWOOD BEACH



## ARRIVE TO ULTIMATE ELEGANCE

Designed by Yabu Pushelberg and set apart with extraordinary works of contemporary art, the lobby and interior amenity spaces at SLS LUX take glamour and sophistication to all new levels of refinement. With every arrival, residents enjoy impeccable service that attends to every conceivable business and personal need.



*seriously*  
LAVISH  
*SUITES*



FITNESS BY

EQUINOX





*scintillating*  
**LIVELY**  
*scene*

Introducing SLS LUX, the latest evolution of the SLS Hotels and Residences brand. SLS LUX creates an environment for hotel guests and residents alike that indulges the senses and provides a world of incomparable luxury and comfort. Dramatic interiors and original works of art by contemporary masters create an atmosphere that is as unique as it is exclusive. An extensive menu of personal services ensures that every need is anticipated and catered to with perfection.





BAR CENTRO, SLS BEVERLY HILLS



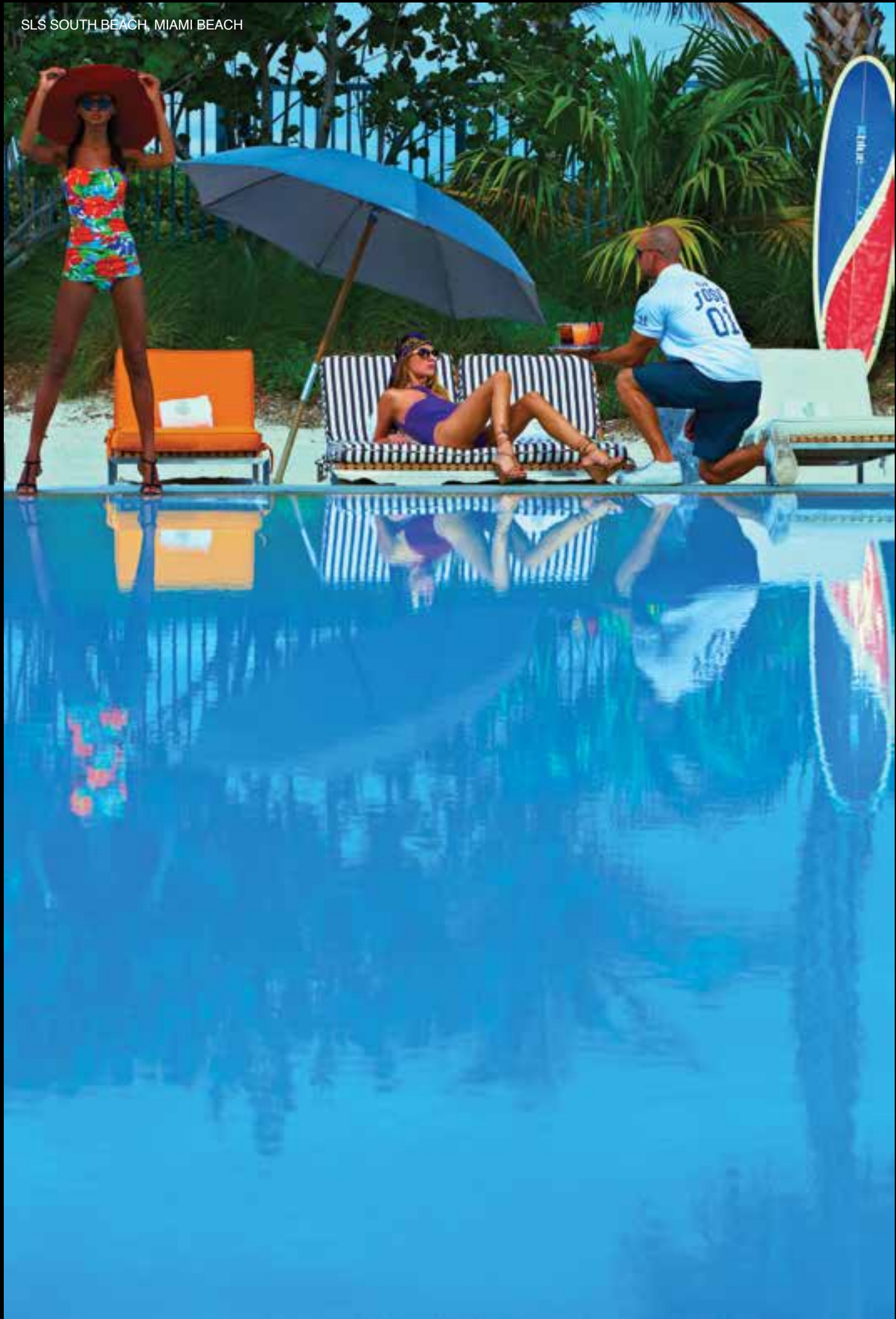
SLS BEVERLY HILLS, LOS ANGELES



SLS SOUTH BEACH, MIAMI BEACH



SLS SOUTH BEACH, MIAMI BEACH



## THE COAST-TO-COAST PORTFOLIO OF SLS

SLS has partnered with celebrated chefs José Andrés, Katsuya Uechi, Danny Elmaleh, and Michael Schwartz, as well as Renaissance men Matthew Rolston and Lenny Kravitz, to create immersive design, dining, and nightlife experiences within each hotel. SLS tailors each experience, making it easy to enjoy the offerings as well as the cities beyond.





**KATSUYA UECHI**  
**MASTER SUSHI CHEF**

Master sushi chef Katsuya Uechi brings more than three decades of culinary artistry to SLS LUX. Known for his distinctive style and first-rate execution of high-quality traditional sushi, Uechi is also recognized as one of the major trendsetters in the world of Japanese cuisine and was named "Chef of the Year" by *Angeleno* magazine. With specialty cocktails, unique rolls and spectacular sushi and sashimi platters, Chef Uechi skillfully translates Japanese flavors to the American palate.





W GUANGZHOU, CHINA



THE LONDON EDITION, LONDON

## KATSUYA BY sbe

Katsuya by sbe brings the finest design together with the most exquisitely prepared cuisine right at your doorstep. Interiors by Yabu Pushelberg with dramatic lighting and sculptural seating set the tone for a romantic evening, a special celebration, or an impromptu gathering. Master sushi chef Katsuya Uechi's award-winning fusion menus become even more memorable in this elegant setting.



SBAR, LOS ANGELES



SBAR  
NIGHTLIFE SHAKEN & STIRRED

Sexy, sultry, and glamorous, SBar takes lounge life to all new heights of enjoyment. The vibe is casual and the style is bohemian chic with an urban edge. Live jazz, innovative cocktails, and a tempting array of lite bites make SBar the perfect place to meet up with friends any day of the week for an intimate tête-à-tête or an all-night party.



SLS SOUTH BEACH, MIAMI BEACH



SLS SOUTH BEACH, MIAMI BEACH



BEACHSIDE SERVICE, SLS SOUTH BEACH



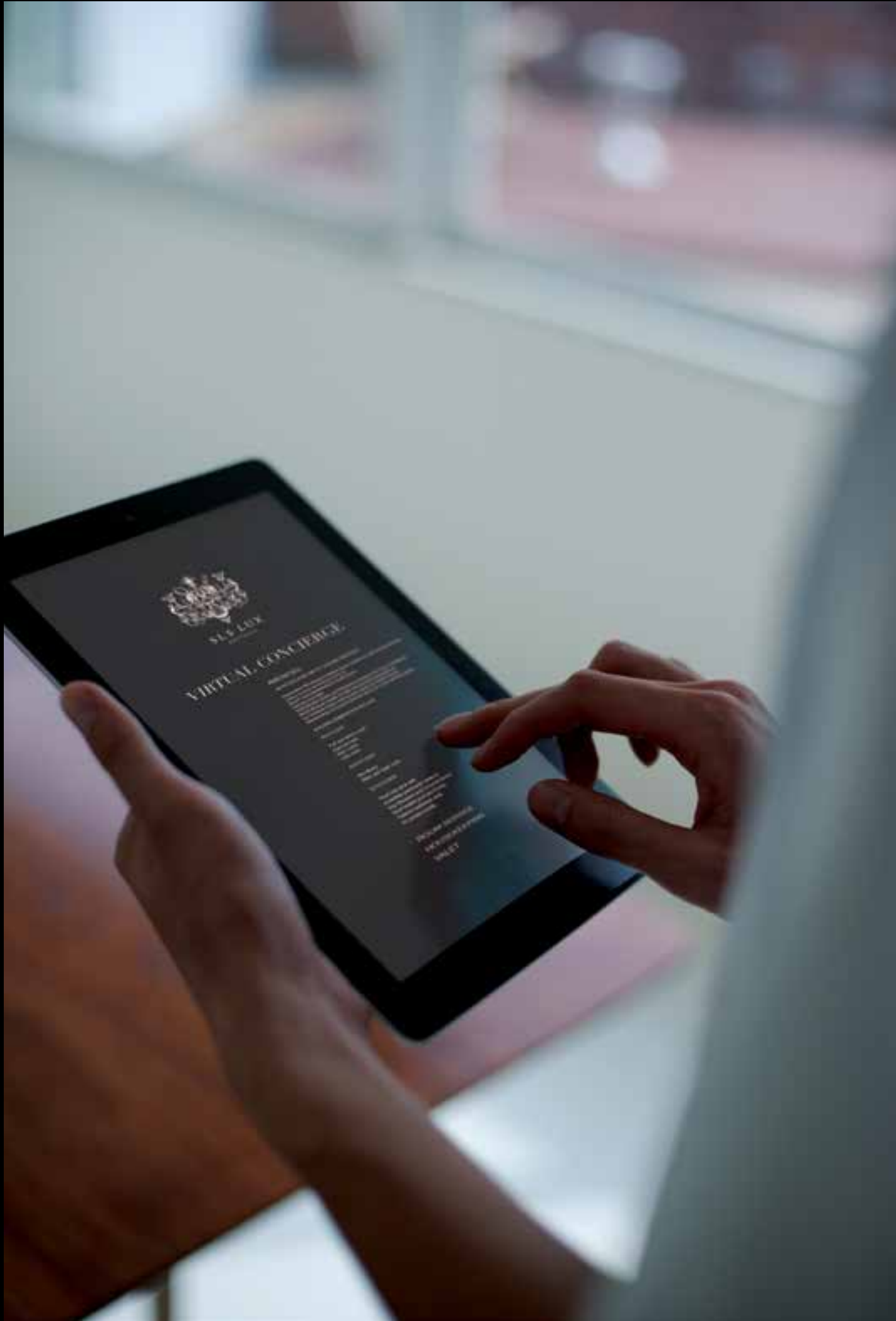
## SUN-INSPIRED ESCAPE: THE SLS LUX BEACH CLUB

With SLS LUX private limousine service to Hyde Beach at SLS South Beach, the oceanfront privileges of a chic private beach club are all yours. Fully stocked cabanas, cozy sun lounges, and fresh towel service ensure that you are pampered in every way. With beach butler beverage and snack service, it's the perfect way for the whole family to enjoy the golden sun and turquoise sea all day long.









## TECHNOLOGY-ENHANCED LIFESTYLE

Touch-screen monitor and iPad access to SLS LUX concierge services via custom SLS LUX app enables residents to:

- Make dining reservations.
- Order room service.
- Sign up for SoulCycle classes at Equinox.
- Reserve a tennis court.
- Order valet service.
- Make an appointment at Ciel Spa for a massage or beauty treatment.
- Book limousine service to Hyde Beach at the SLS Hotel South Beach.
- Buy tickets to the opera or a movie.
- Manage a full array of customizable residence features, including:
  - Automated lighting control.
  - Automated window treatments.
  - Automated audio-visual capabilities.
  - Smart Nest thermostat system with automated temperature control for the high-efficiency central air-conditioning and heating systems.

## MEETINGS & EVENTS AT SLS BRICKELL

With access to SLS Brickell's event facilities and services, residents of SLS LUX can easily host any kind of event from an exclusive private party to a lavish press launch. Choose from a full menu of services and spaces.

- Customized menus.
- Experienced event management and catering specialists.
- Preferred room rate and room block for guests.
- 24-hour full-scale AV expertise and capabilities.
- Property-wide WiFi access, telephone, and web conferencing.
- Post-conference shipping.
- Concierge services.
- Multilingual staff.





## AN INTOXICATING MIX OF SUBLIME SERVICES & AMENITIES

At SLS LUX, residents enjoy the pampering services of a five-star hotel in the comfort of their residence or suite. Everything from pre-arrival provisioning and all-night room service to babysitting and housekeeping is just one call or digital touch away. Having the best of both worlds at your fingertips means it's a snap to host a stylish dinner party in your own elegant dining room complete with celebrity chef-prepared dishes, and it's just as easy to secure VIP seats to the hottest shows in Miami. Whatever you desire, SLS LUX is at your service.





EQUINOX MADE ME DO IT.  
VIP ACCESS TO THE “TEMPLE OF WELLBEING”  
AT BRICKELL HEIGHTS

Residents of SLS LUX enjoy VIP access to Equinox Brickell and SoulCycle at Brickell Heights, conveniently located just across the street. Called the “Top American Club” by *Condé Nast Traveler* and “A Temple of Well-Being” by *The New York Times*, Equinox brings high-performance fitness programs together with unprecedented service and beautifully luxurious design. At the 35,000-square-foot facility, fitness regimes are designed by innovative personal trainers and expert nutritionists based on your individual health and wellness goals.

SoulCycle’s state-of-the-art 3,500-square-foot indoor cycling studio gets you moving with high-energy music and inspiring SoulCycle® Method classes that help you work your core and upper body. Top instructors and staff deliver personal attention to all levels of riders.







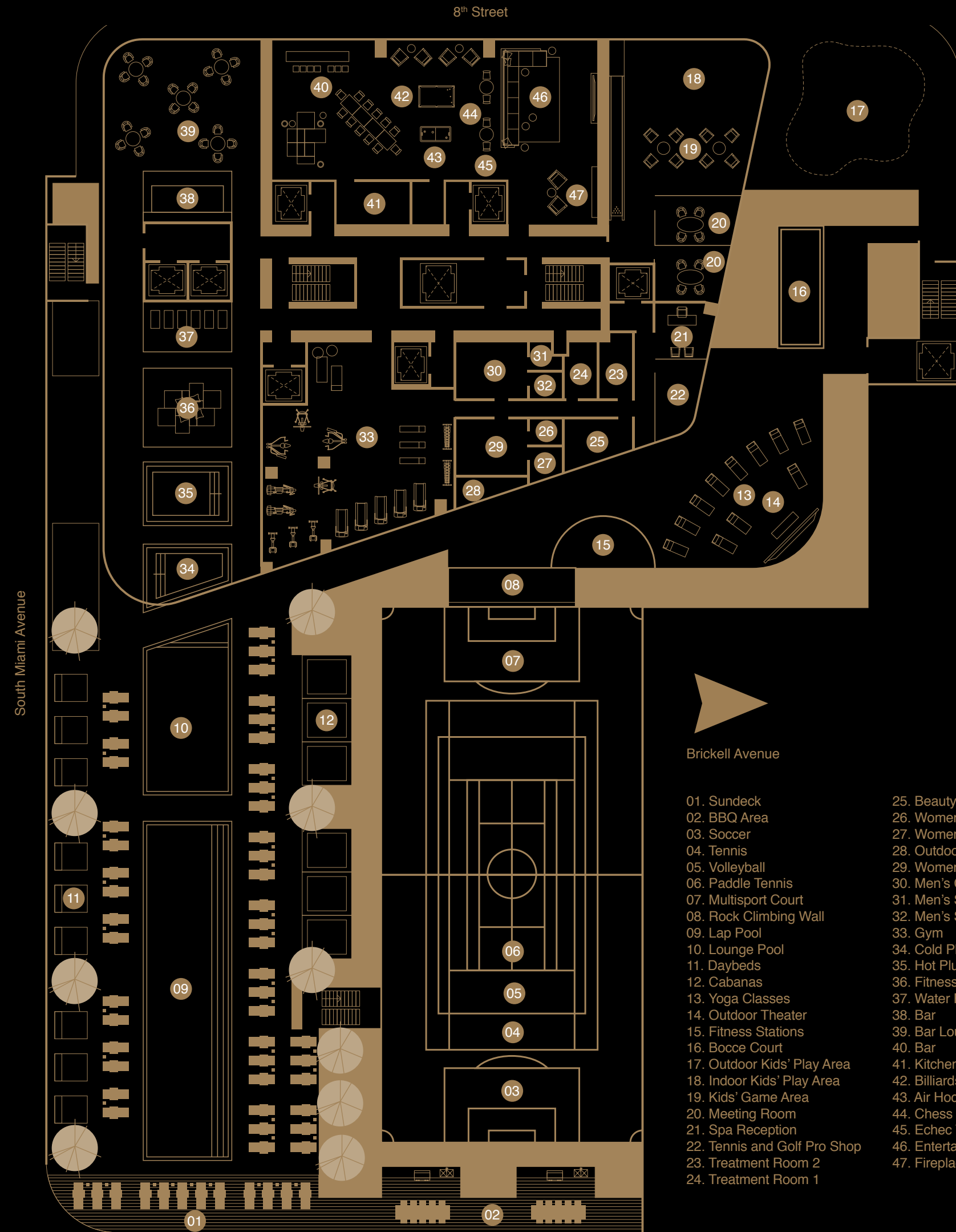
*seductive*  
LIFESTYLE  
*scenarios*





*savor* LIFE'S  
SWEETNESS





# LUX *garden level*

## 9<sup>TH</sup> FLOOR INDOOR & OUTDOOR FEATURES

- Expansive amenity terrace overlooking the Brickell Skyline features a 75-foot lap pool and a separate 112-foot beach-entry pool.
- Poolside cabanas and shaded lounge areas.
- Juice bar.
- Poolside bar with TV, live entertainment, and al fresco dining.
- Towel service.
- BBQ area with summer kitchen.
- Multisport center with a soccer academy court, a basketball court, a bocce court, and a combined court for tennis, paddleball, and volleyball.
- Rock climbing wall.
- Circuit training fitness stations located throughout amenity deck.
- Outdoor area for yoga classes.
- Outdoor theatre.
- Total health and wellness opportunities at the SLS LUX state-of-the-art fitness center include weight-training equipment, as well as cardio machines with personal plasma television/music options. Free weights, stretching mats, Pilates balls, yoga mats, and headphones are all available for complimentary use.
- In addition, residents can opt for an exclusive membership at Equinox Brickell and SoulCycle, located across the street in the upcoming Brickell Heights residences.
- Ciel Spa at SLS LUX features beauty treatment and massage beds, specialized massage therapists on demand, experience showers, and herbal steam rooms, among other luxurious indulgences.
- Children's indoor and outdoor play areas with monitoring services and a supervised activity center led by professional staff.
- Club Room Lounge enables residents to gather with family and friends and enjoy multimedia entertainment system with major sports programming with built-in speaker system, and a fully equipped gourmet kitchen.
- Full access to the Executive Business Center at SLS Brickell, equipped with high-speed wireless connectivity, a conference room with audio-visual equipment for private meetings, access to wireless printers and fax machines, meeting rooms, event space, and catering services.
- VIP Access to South Beach's hottest beach club, Hyde Beach at the SLS Hotel South Beach with lounges, cabanas, beach and pool towel services, seaside snack and beverage services.

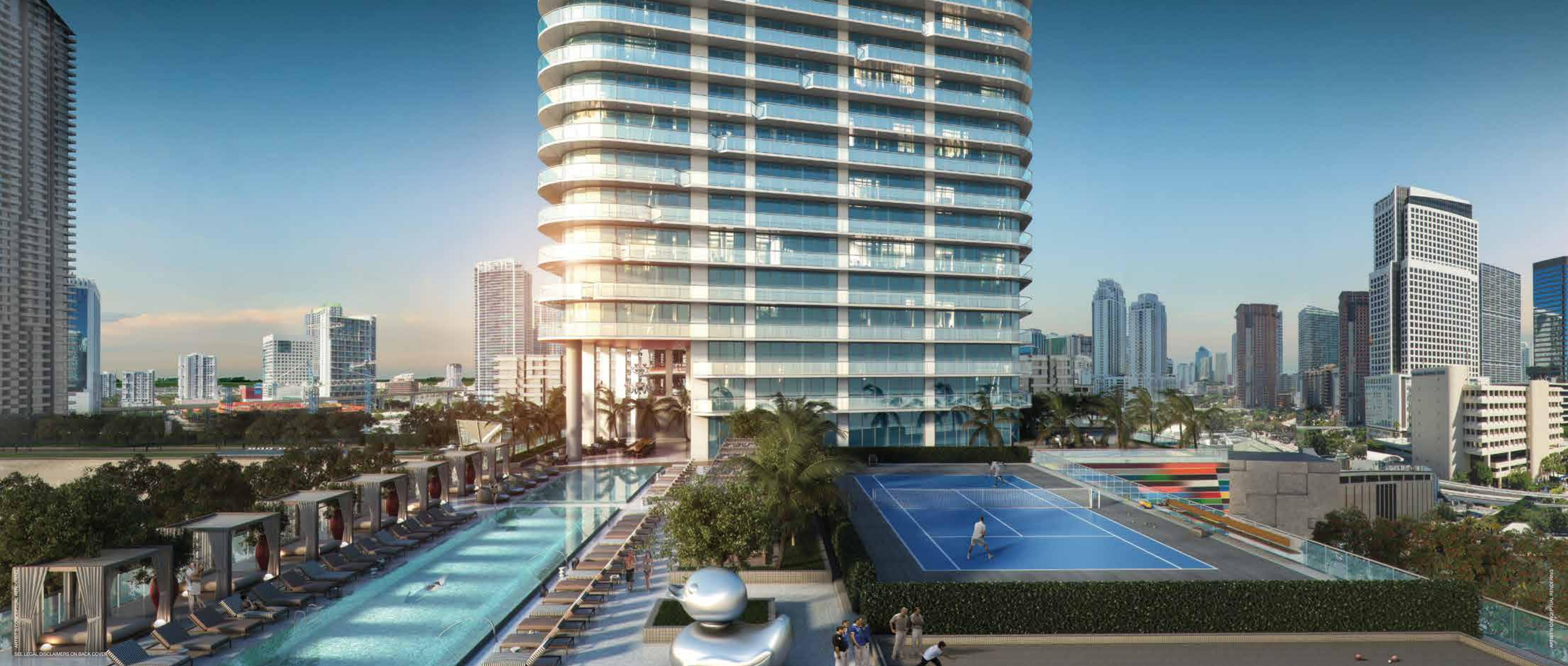
- |                              |                           |
|------------------------------|---------------------------|
| 01. Sundeck                  | 25. Beauty Salon          |
| 02. BBQ Area                 | 26. Women's Sauna         |
| 03. Soccer                   | 27. Women's Steam Room    |
| 04. Tennis                   | 28. Outdoor Rain Showers  |
| 05. Volleyball               | 29. Women's Changing Room |
| 06. Paddle Tennis            | 30. Men's Changing Room   |
| 07. Multisport Court         | 31. Men's Steam Room      |
| 08. Rock Climbing Wall       | 32. Men's Sauna           |
| 09. Lap Pool                 | 33. Gym                   |
| 10. Lounge Pool              | 34. Cold Plunge           |
| 11. Daybeds                  | 35. Hot Plunge            |
| 12. Cabanas                  | 36. Fitness Lounge        |
| 13. Yoga Classes             | 37. Water Feature         |
| 14. Outdoor Theater          | 38. Bar                   |
| 15. Fitness Stations         | 39. Bar Lounge            |
| 16. Bocce Court              | 40. Bar                   |
| 17. Outdoor Kids' Play Area  | 41. Kitchen               |
| 18. Indoor Kids' Play Area   | 42. Billiards Table       |
| 19. Kids' Game Area          | 43. Air Hockey            |
| 20. Meeting Room             | 44. Chess Table           |
| 21. Spa Reception            | 45. Echeq Table           |
| 22. Tennis and Golf Pro Shop | 46. Entertainment Area    |
| 23. Treatment Room 2         | 47. Fireplace             |
| 24. Treatment Room 1         |                           |





Overlooking the Brickell skyline on the LUX Garden Level, two pools and extensive sporting and recreation amenities take relaxation and fitness out into the sunshine. Stylish cabanas and lounge areas invite residents to sit back and enjoy poolside snack and beverage service. Courts for tennis, soccer, bocce, and basketball create many opportunities for pickup games with friends and neighbors. A dedicated children's play area caters to the happiness of our smallest residents.





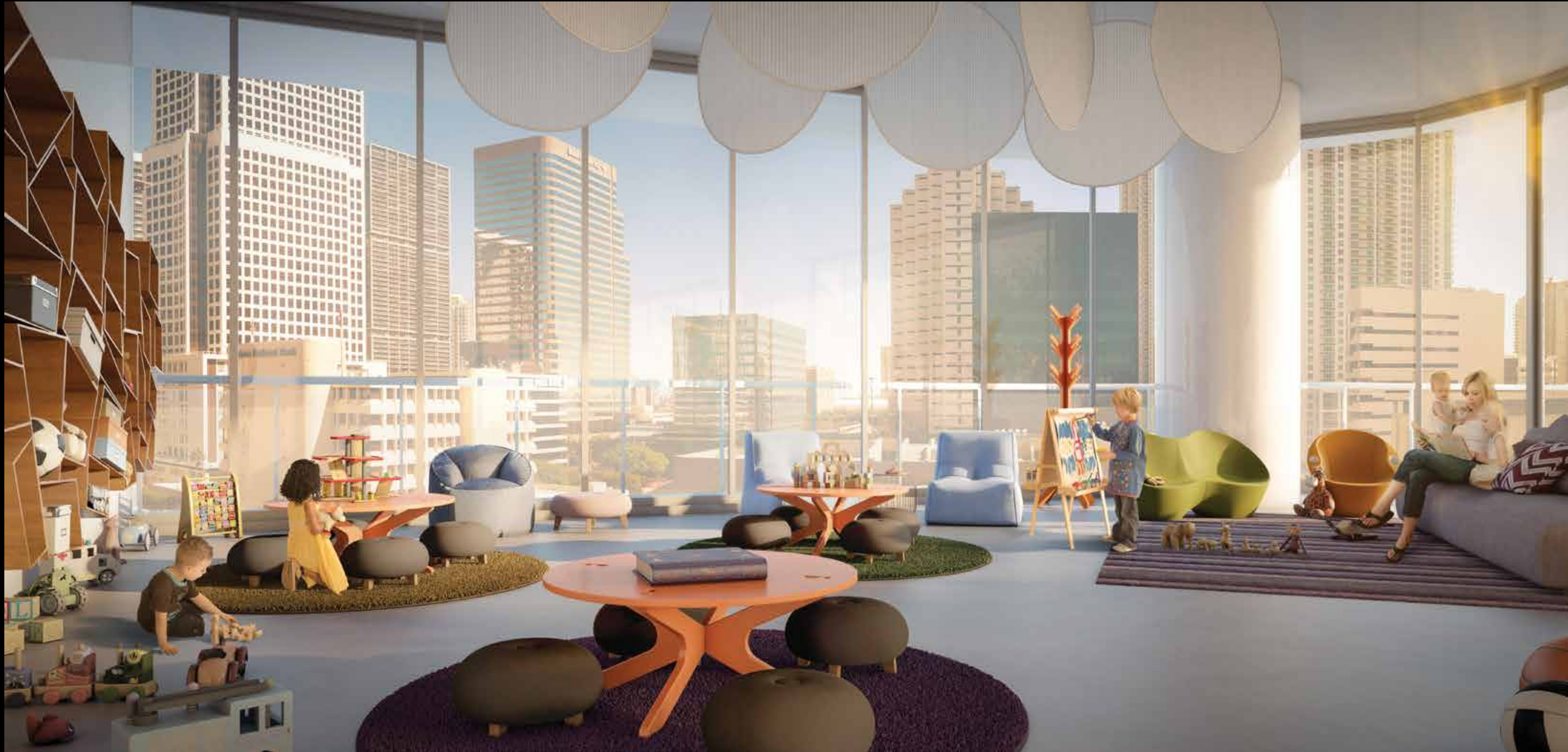




### GLAMOROUS & ENTERTAINING: THE CLUB ROOM LOUNGE

Elegantly designed and furnished by Yabu Pushelberg, the Club Room Lounge on the 9<sup>th</sup> floor offers a glamorously entertaining atmosphere for gatherings with friends and family. This light-filled space is outfitted with a state-of-the-art multimedia entertainment and speaker system and major sports programming, making it the ideal place to view the season's best games. A fully equipped gourmet kitchen makes it easy to enjoy snacks, hors d'oeuvres, and beverages anytime.





## LUX KIDS LIFESTYLE

At SLS LUX, kids have an amazing array of indoor and outdoor amenities dedicated to keeping them happy and socially engaged. Our professionally trained staff supervises fun and games in the beautifully designed and equipped children's activity center as well as in the Garden LUX Level children's playground, encouraging the development of new skills and intellectual growth.



OUTDOOR THEATRE



OUTDOOR YOGA



BOCCE COURT



EXECUTIVE BUSINESS CENTER



BEACH-ENTRY POOL



CIEL SPA



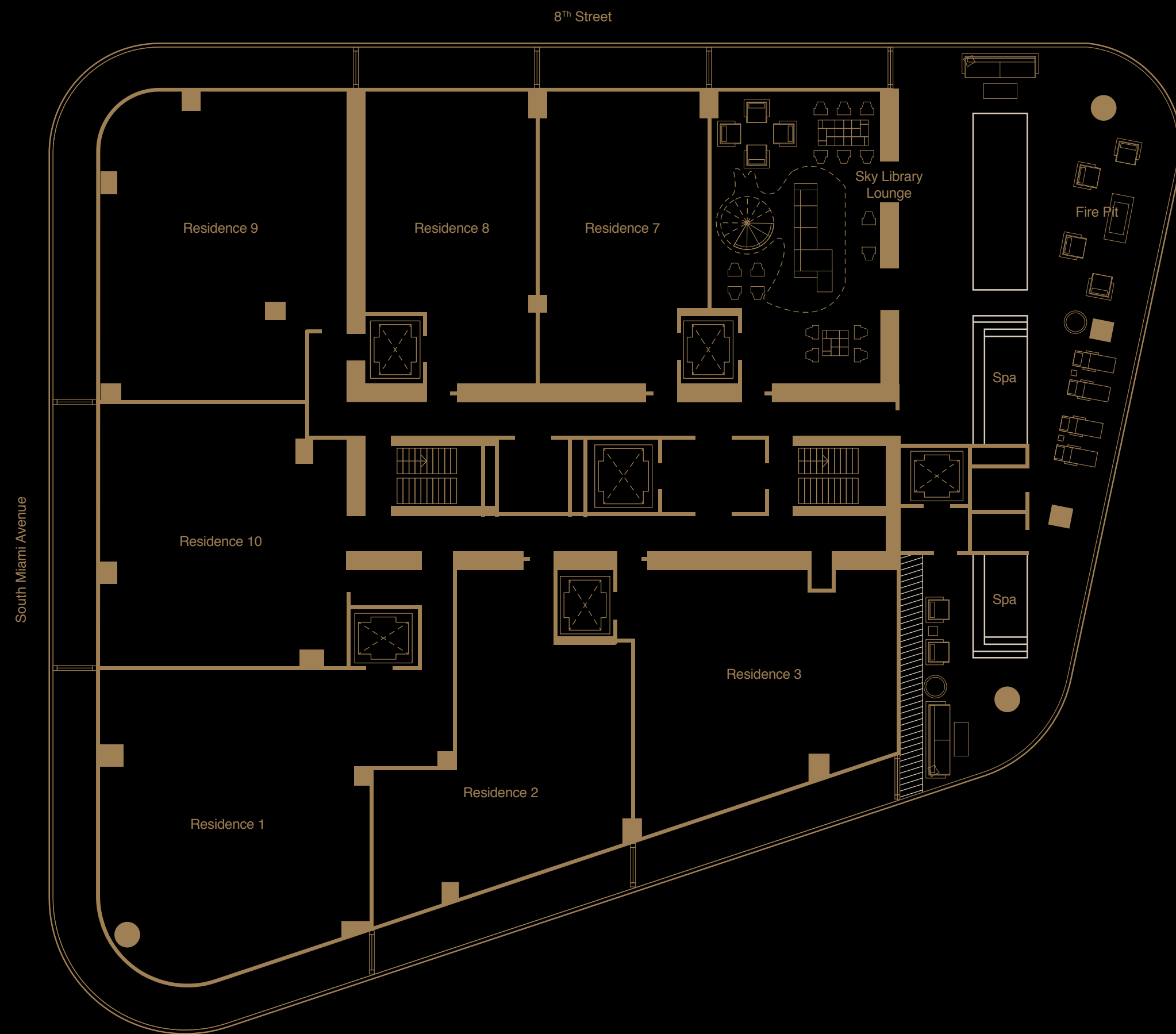
ROCK CLIMBING WALL



TENNIS COURT







# *sky* LIBRARY *sights*

## 44<sup>TH</sup> / 45<sup>TH</sup> FLOOR SKY LOUNGE

Retreat to the Sky Library LUX Lounge & Spa, where outdoor lounge space and two spas overlook the excitement of Brickell and the stunning expanse of Biscayne Bay. This amenity is exclusively for the use of condominium residents.

- Outdoor lounge space with beautifully designed fire pit with breathtaking views of Biscayne Bay and the Miami skyline for exclusive use of condominium residents.
- Two-story indoor lounge and recreation area with private wine cellar, billiards, and poker table.



OUTDOOR SKY LUX LOUNGE



BILLIARDS ROOM



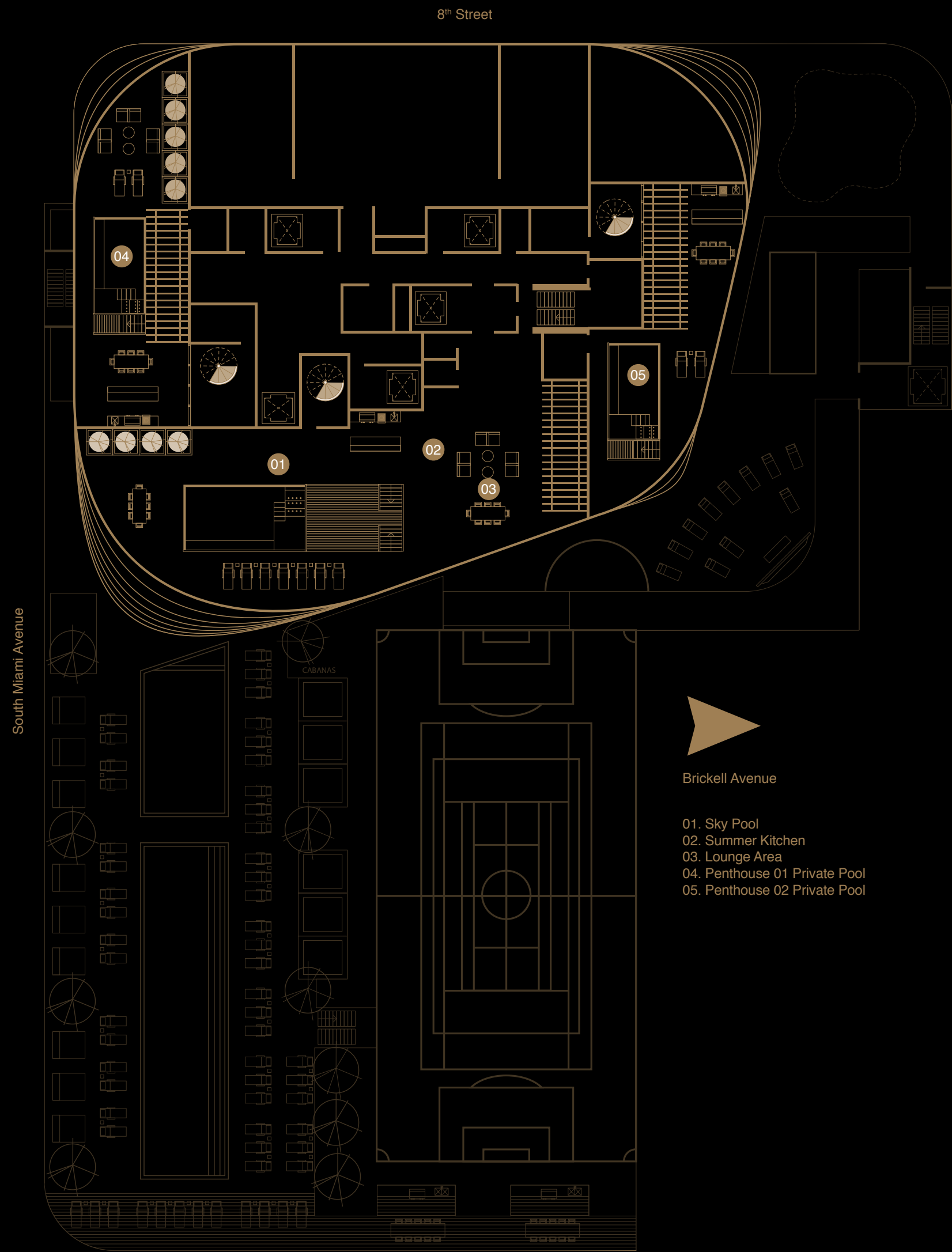
PRIVATE WINE CELLAR



SKY LIBRARY LOUNGE







# *star* POOL*lux*

## 57<sup>TH</sup> FLOOR ROOFTOP PRIVATE SUNDECKS AND SPA

Residents of Penthouses enjoy exclusive access to SLS LUX's 57<sup>th</sup> floor rooftop terrace with breathtaking views of Biscayne Bay and the Miami skyline. This private outdoor lounge space has been designed with a pool, spas, and a summer kitchen with a barbecue area ideal for entertaining.



*sun*  
LOVING  
*sensation*





TROPICAL VIEWS



ROOFTOP BBQ



KIDS' PLAYGROUND



LAP POOL





*your*  
SKYLINE  
*views*





*sophisticated*  
LUXURIOUS  
*sanctuary*





## RESIDENCE FEATURES

- Stunning views of Biscayne Bay and the Miami skyline.
- Residences delivered fully finished with several choices of imported porcelain tile flooring preselected by award-winning interior design firm Yabu Pushelberg.
- Elegant private elevators with biometric technology.
- Private vestibules in all residences.
- Spacious, fully finished walk-in closets in all master bedrooms.
- Residences available with either 9-foot or 10-foot smooth-finish ceilings in living spaces.
- Rain showers and spa tubs in all master bathrooms.
- Spacious terraces with glass and aluminum railings directly accessible from living areas and bedrooms of every residence through floor-to-ceiling sliding glass doors.
- Wraparound terraces in all corner units.
- Select residences include barbecue grill area in terrace.
- Exclusive collection of 12 penthouse residences with 12-foot ceilings; some with private rooftop pools and outdoor spas.
- Pre-wired for high-speed communications, multiple telephone lines, and cable.
- The latest in "smart building" technology features a custom SLS LUX app, linking residents to SLS Brickell professional concierge services and building amenities.
- Home automation systems.
- Two self-parking spaces available for most residences.



*exclusive* SKY.  
*residences*







## YOUR UNIQUE SPACES

With an array of fine finishes preselected by Yabu Pushelberg to choose from, your residence is a unique reflection of your personal style. With on-demand hospitality services from SLS LUX, your residence is also the most elegant place to entertain without lifting a finger.





ARTIST'S CONCEPTUAL RENDERING

## SLEEK KITCHENS

- Contemporary Italian kitchen cabinets by Italkraft.
- Several choices of cabinet finishes and stone countertops preselected by Yabu Pushelberg (optional full backsplashes).
- Top-of-the-line stainless-steel appliance package includes integrated paneled 36" Subzero refrigerator/ freezer, Wolf drawer microwave, Wolf silent dishwasher, Wolf built-in convection oven, and ceramic glass stovetop.
- Stainless-steel under-mount oversize zero-radius square-edge sink with single lever European-style pullout faucet sprayer.



ARTIST'S CONCEPTUAL RENDERING

## EXQUISITE BATHS

- Premium European cabinetry with designer details, imported stone vanity tops and full-size mirrors designed by Yabu Pushelberg.
- Double designer vessel bowl lavatories in master baths in select residences.
- Elongated water closets.
- Spacious spa tubs and frameless glass-enclosed showers in master baths in select residences.
- Imported porcelain flooring, base and walls in wet areas.
- Designer faucets.
- Powder rooms in select residences.



*stellar*  
LEADERSHIP  
*synergies*





JORGE PÉREZ  
FOUNDER, CHAIRMAN, AND CEO

CARLOS ROSSO  
PRESIDENT, CONDOMINIUM  
DEVELOPMENT DIVISION



W. ALLEN MORRIS  
CHAIRMAN AND CEO



SAM NAZARIAN  
FOUNDER, CHAIRMAN, AND CEO



GLENN PUSHELBERG  
GEORGE YABU  
FOUNDING PARTNERS



BERNARDO FORT-BRESCIA  
FOUNDING PRINCIPAL

## THE RELATED GROUP

Founded in 1979 by Jorge M. Pérez, The Related Group is the nation's leading developer of multifamily residences. Under his direction, as well as the leadership of Carlos Rosso, President of the Condominium Development Division, The Related Group and its affiliates have redefined the South Florida landscape. Since its inception, The Related Group has developed and/or managed more than 80,000 apartments and condominium residences. Its many distinctive properties in South Florida include Portofino Tower, the Yacht Club at Portofino, Murano at Portofino, Murano Grande, and Icon South Beach.

The Related Group's developments are often distinguished by groundbreaking partnerships with world-renowned architects, designers, and artists, resulting in residential properties that are recognized as urban landmarks. Awards the company has earned include the prestigious Honor Award from the National Building Museum. In addition, Icon Brickell has won 18 BEST awards from the Builders Association of South Florida. The company and its leadership are committed to developing properties that energize cities, celebrate innovative architecture and urban planning, and create vibrant new ways to live in the most dynamic neighborhoods.

## THE ALLEN MORRIS COMPANY

Led by W. Allen Morris, Chairman and CEO, The Allen Morris Company is a 56-year-old firm founded in Miami in 1958. It develops, brokers, leases, and manages commercial and multifamily properties across the Southeastern U.S., with 79 developments to its credit. Allen Morris Residential creates unique, inspiring lifestyle experiences for residential condominiums and apartment homes. Mr. Morris was recognized with the 2011 Real Estate Trend Setter Award from the Greater Miami Chamber of Commerce and was named the 2009 South Florida Business Leader of the Year in real estate.

## SBE

sbe Founder, Chairman, and CEO Sam Nazarian has been a transformative force in contemporary hospitality. In only a decade, he has defined "the scene" in Los Angeles and beyond, driving sbe to become the creative wellspring for some of the most sought-after luxury lifestyle brands in North America. The youngest executive to be named one of the "Top 100 Most Powerful People in Southern California" by *West*, the *Los Angeles Times*' magazine, Nazarian was also named among "The Influentials" in *Los Angeles Magazine* and was recently honored with the Mondavi Wine & Food Award.

## YABU PUSHELBERG

Serving a global clientele from locations in New York City and Toronto, the design studio of Yabu Pushelberg is divided into six teams comprised of experts in the design and project management of luxury interiors. The firm has been honored with the Platinum Circle Award for exceptional achievement in the hospitality industry and the James Beard Foundation Award for excellence in restaurant design. Partners George Yabu and Glenn Pushelberg were named Designer of the Year by *Contract* magazine, and they have been inducted into *Interior Design* magazine's "Hall of Fame."

## ARQUITECTONICA

Arquitectonica is a Miami-based architecture, interior design, and planning firm led by Bernardo Fort-Brescia and Laurinda Spear. Working from offices across North America, Latin America, Europe, Asia, and the Middle East, the firm has designed mixed-use developments, resorts, hotels, luxury condominiums, schools, universities, and museums. Mr. Fort-Brescia is the recipient of multiple awards, including the 1998 AIA Silver Medal for Design Excellence. His work has been featured in thousands of publications internationally and has been the subject of numerous museum exhibitions worldwide.



SLS HOTEL & RESIDENCES, BRICKELL



HUDSON YARDS, NEW YORK



PARQUE GLOBAL, SÃO PAULO



ICON BRICKELL, MIAMI



ICON VALLARTA, MEXICO



ONE OCEAN, SOUTH BEACH



THE RELATED GROUP





ALHAMBRA TOWERS, CORAL GABLES



THE HERMITAGE APARTMENT HOMES™, ST. PETERSBURG



PERIMETER 400 CENTER, ATLANTA



PUBLIC HOTEL, CHICAGO



ST. REGIS, MEXICO CITY



TRUMP HOLLYWOOD, HOLLYWOOD BEACH

THE ALLEN MORRIS COMPANY

YABU PUSHIELBERG



SLS BEVERLY HILLS, LOS ANGELES



SLS SOUTH BEACH, MIAMI BEACH



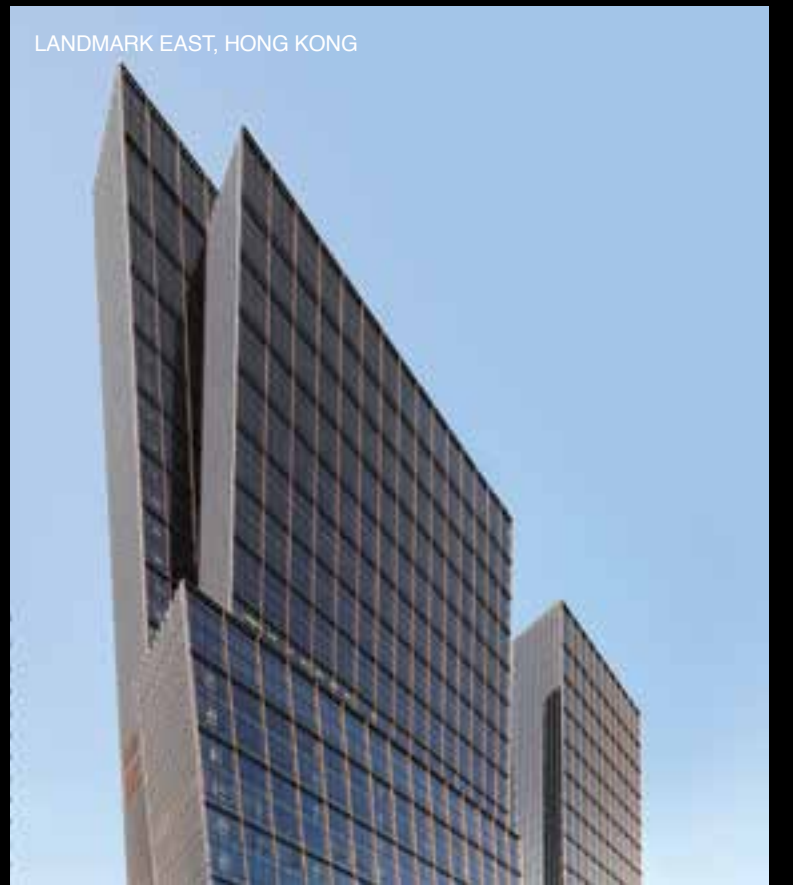
SLS LAS VEGAS, HOTEL & CASINO



RIVIERA TWINSTAR SQUARE, SHANGHAI



AMERICAN AIRLINES ARENA, MIAMI



LANDMARK EAST, HONG KONG

SBE

ARQUITECTONICA







