

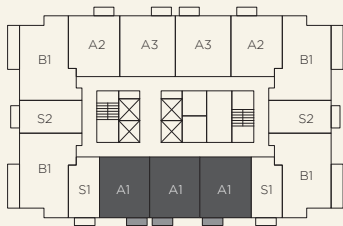
# THE CROSBY

MIAMI WORLDCENTER



## The RESIDENCES

**A1**  
1 Bed / 1 Bath

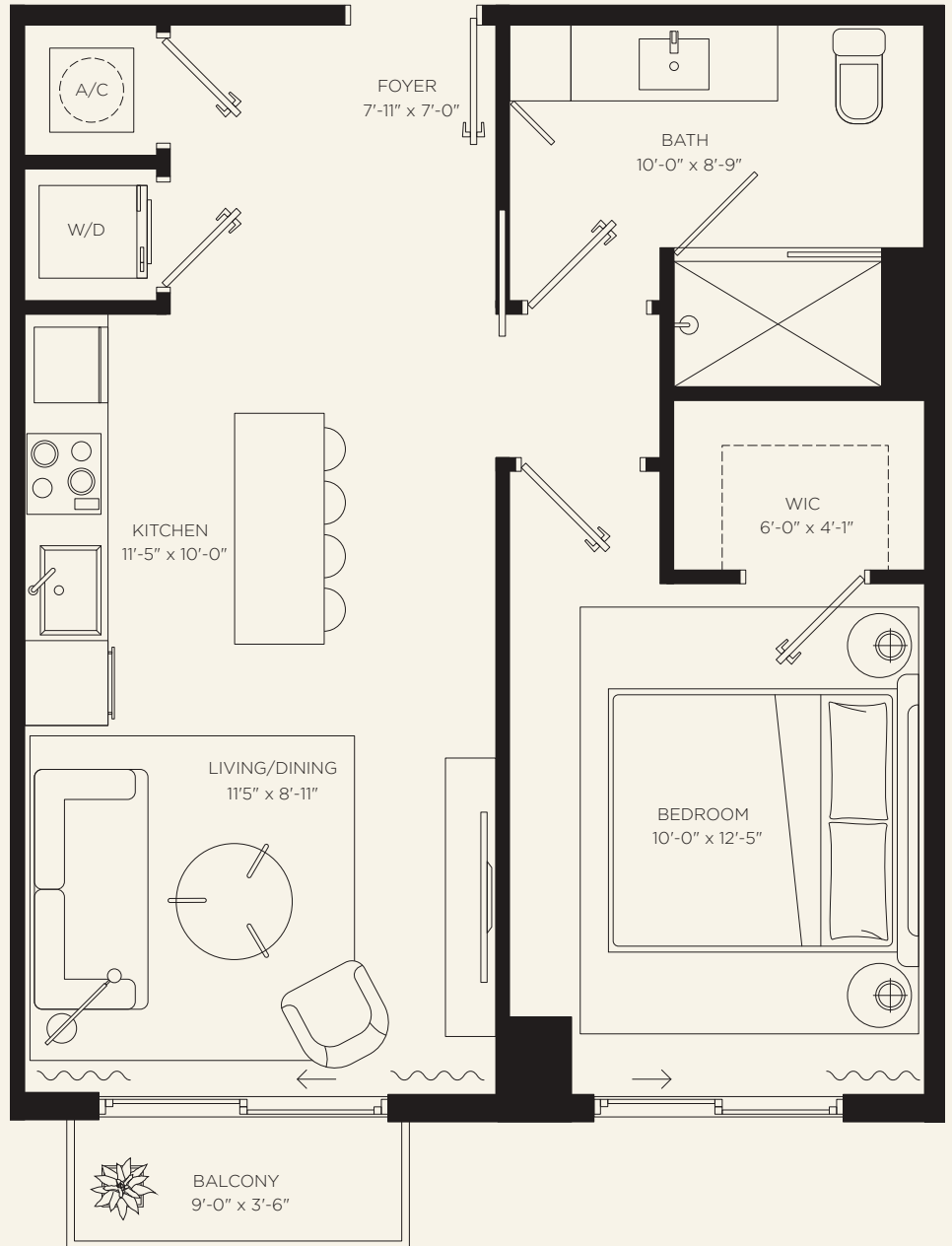


**INTERIOR**  
600 SF | 56 m<sup>2</sup>

**EXTERIOR**  
30 SF | 3 m<sup>2</sup>

**TOTAL AREA**  
630 SF | 59 m<sup>2</sup>

**MIAMI LIVING**  
*Downtown Sophistication*



786 4374 236  
Info@TheCrosbyMiami.com  
www.TheCrosbyMiami.com

**Sales Gallery**  
698 NE 1st Avenue, Suite 184  
Miami FL 33132



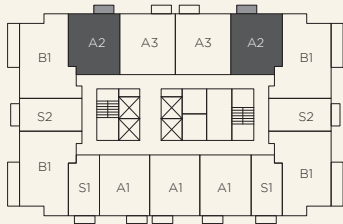
The dimensions stated for this unit floor plan are approximate because there are various recognized methods for calculating the square footage of a unit. The square footage stated here is calculated from the exterior boundaries of the exterior walls to the centerline of interior demising walls without deductions for cutouts, curves, or architectural features. This method typically results in quoted dimensions greater than the dimensions that would be determined by using other accepted methods. The definition of "Unit" and the calculation method to be relied upon is set forth by the Developer, DT G Block, LLC, in Developer's Prospectus and the method set forth in the Developer's Prospectus may result in a square footage calculation less than the method used here. Consult the Developer's Prospectus for information on what is offered with the Unit and the calculation of the Unit square footage and dimensions.

# THE CROSBY

MIAMI WORLDCENTER

## The RESIDENCES

**A2**  
1 Bed / 1 Bath

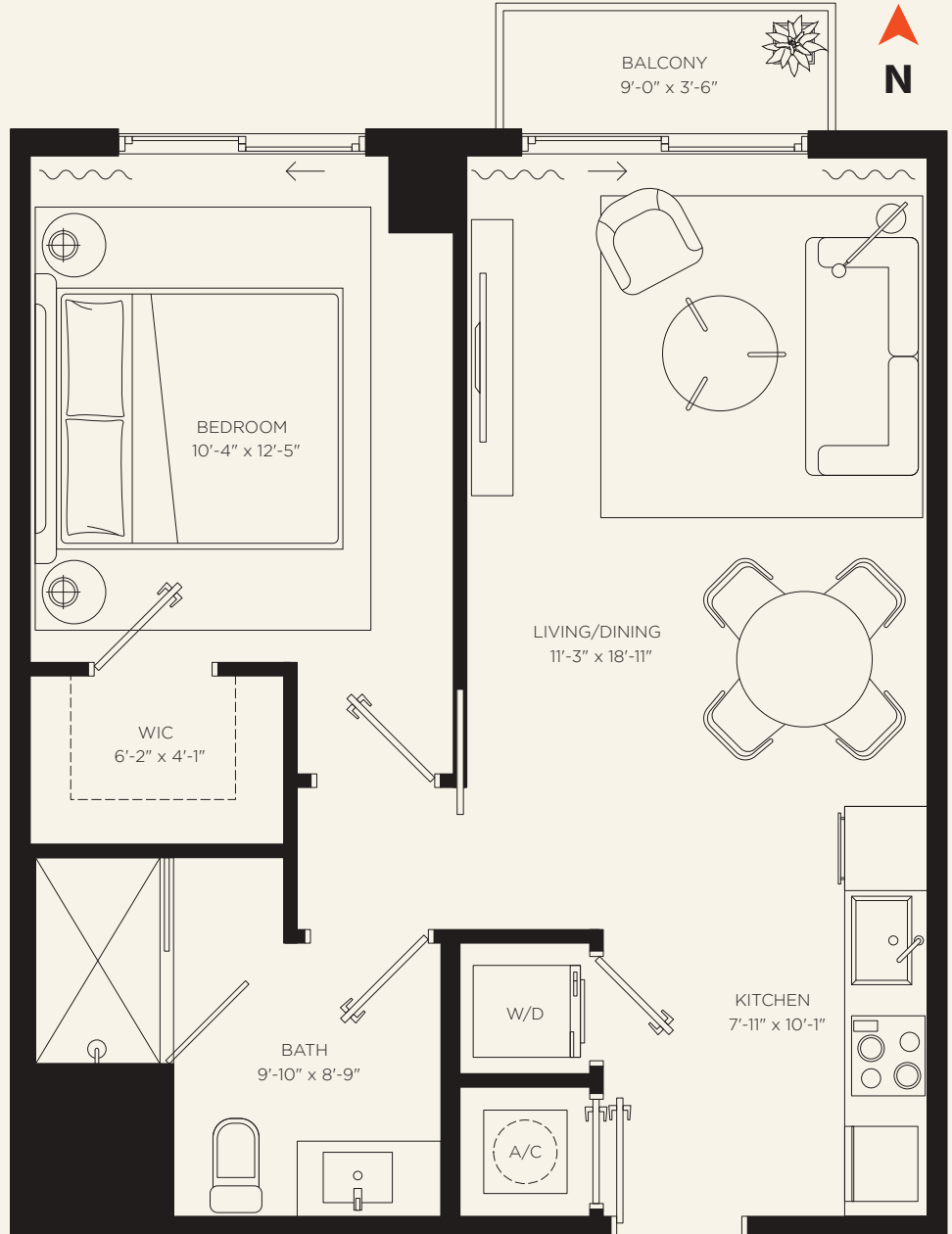


**INTERIOR**  
600 SF | 56 m<sup>2</sup>

**EXTERIOR**  
30 SF | 3 m<sup>2</sup>

**TOTAL AREA**  
630 SF | 59 m<sup>2</sup>

**MIAMI LIVING**  
*Downtown Sophistication*



786 4374 236  
Info@TheCrosbyMiami.com  
www.TheCrosbyMiami.com

**Sales Gallery**  
698 NE 1st Avenue, Suite 184  
Miami FL 33132



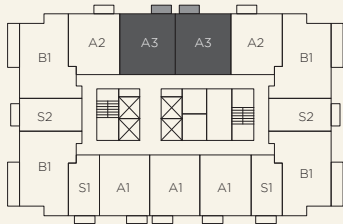
The dimensions stated for this unit floor plan are approximate because there are various recognized methods for calculating the square footage of a unit. The square footage stated here is calculated from the exterior boundaries of the exterior walls to the centerline of interior demising walls without deductions for cutouts, curves, or architectural features. This method typically results in quoted dimensions greater than the dimensions that would be determined by using other accepted methods. The definition of "Unit" and the calculation method to be relied upon is set forth by the Developer, DT G Block, LLC, in Developer's Prospectus and the method set forth in the Developer's Prospectus may result in a square footage calculation less than the method used here. Consult the Developer's Prospectus for information on what is offered with the Unit and the calculation of the Unit square footage and dimensions.

# THE CROSBY

MIAMI WORLDCENTER

## The RESIDENCES

**A3**  
1 Bed / 1 Bath

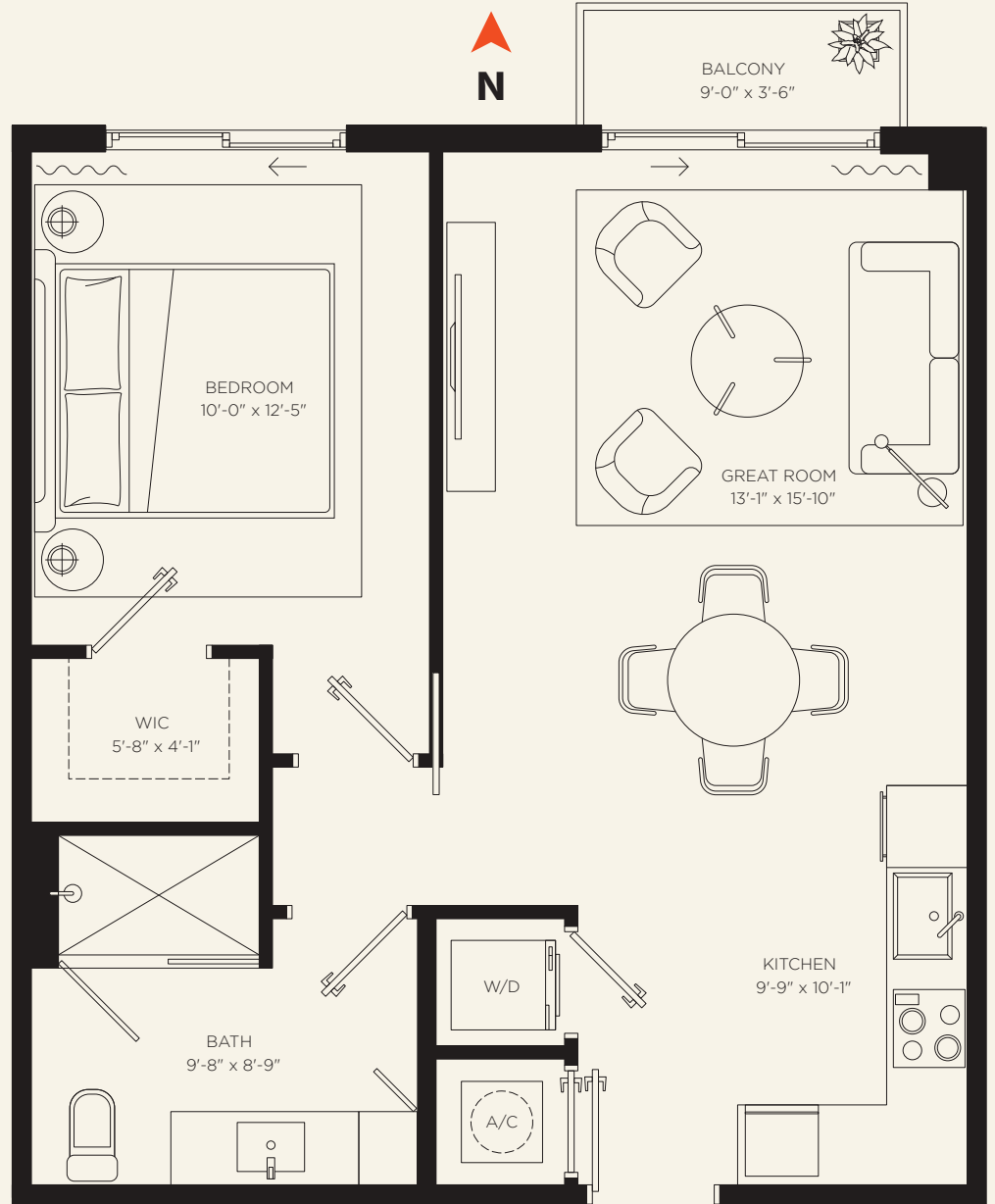


**INTERIOR**  
650 SF | 60 m<sup>2</sup>

**EXTERIOR**  
30 SF | 3 m<sup>2</sup>

**TOTAL AREA**  
680 SF | 63 m<sup>2</sup>

**MIAMI LIVING**  
*Downtown Sophistication*



786 4374 236  
Info@TheCrosbyMiami.com  
www.TheCrosbyMiami.com

**Sales Gallery**  
698 NE 1st Avenue, Suite 184  
Miami FL 33132



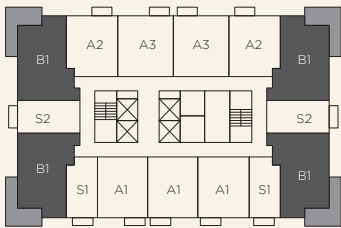
The dimensions stated for this unit floor plan are approximate because there are various recognized methods for calculating the square footage of a unit. The square footage stated here is calculated from the exterior boundaries of the exterior walls to the centerline of interior demising walls without deductions for cutouts, curves, or architectural features. This method typically results in quoted dimensions greater than the dimensions that would be determined by using other accepted methods. The definition of "Unit" and the calculation method to be relied upon is set forth by the Developer, DT G Block, LLC, in Developer's Prospectus and the method set forth in the Developer's Prospectus may result in a square footage calculation less than the method used here. Consult the Developer's Prospectus for information on what is offered with the Unit and the calculation of the Unit square footage and dimensions.

# THE CROSBY

MIAMI WORLDCENTER

## The RESIDENCES

### B1.1 2 Bed / 2 Bath

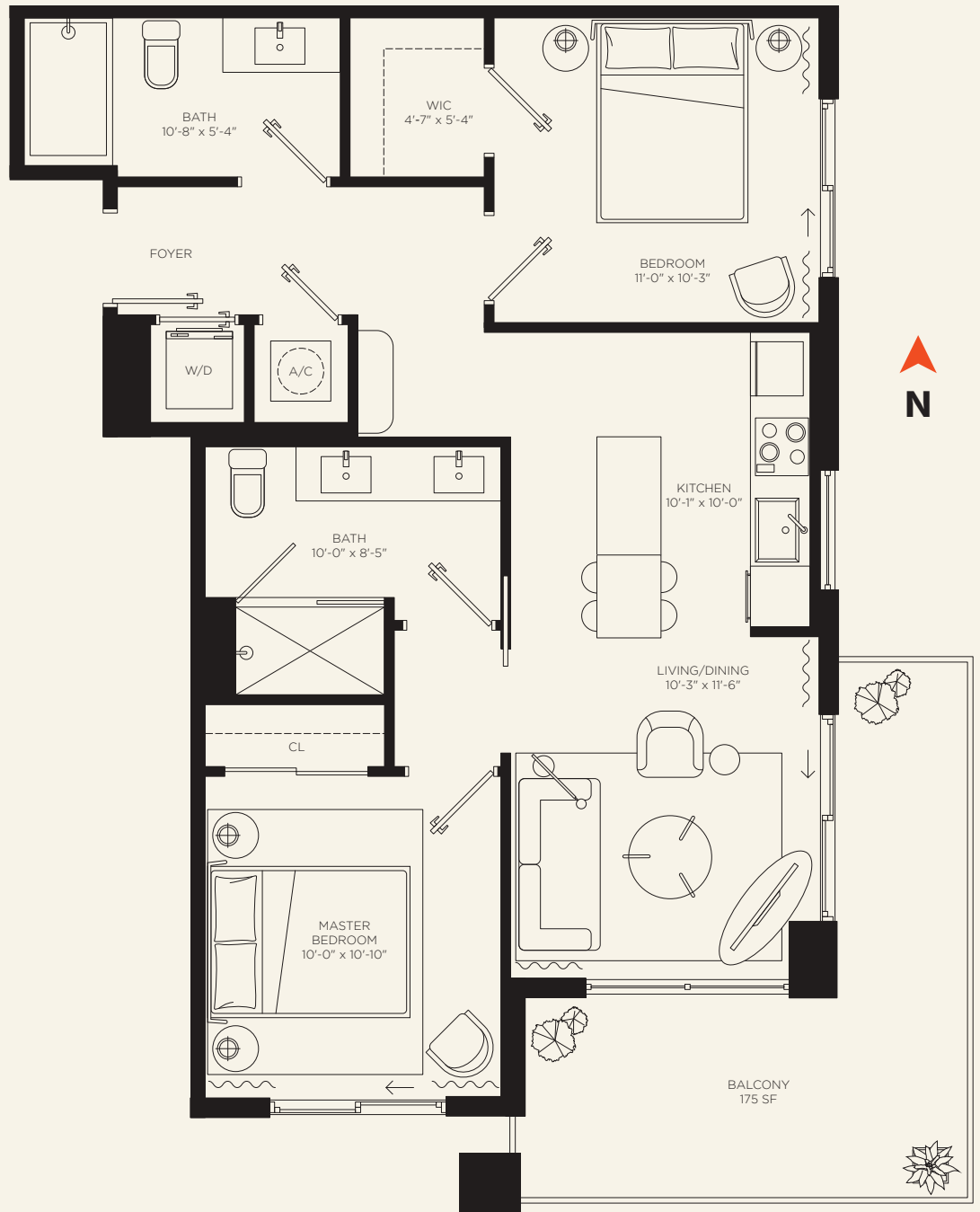


**INTERIOR**  
825 SF | 77 m<sup>2</sup>

**EXTERIOR**  
175 SF | 16 m<sup>2</sup>

**TOTAL AREA**  
1000 SF | 93 m<sup>2</sup>

**MIAMI LIVING**  
*Downtown Sophistication*



786 4374 236  
Info@TheCrosbyMiami.com  
www.TheCrosbyMiami.com

**Sales Gallery**  
698 NE 1st Avenue, Suite 184  
Miami FL 33132



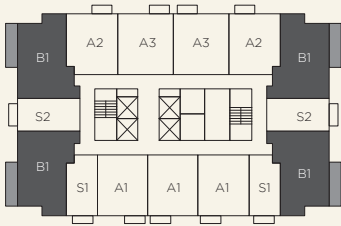
The dimensions stated for this unit floor plan are approximate because there are various recognized methods for calculating the square footage of a unit. The square footage stated here is calculated from the exterior boundaries of the exterior walls to the centerline of interior demising walls without deductions for cutouts, curves, or architectural features. This method typically results in quoted dimensions greater than the dimensions that would be determined by using other accepted methods. The definition of "Unit" and the calculation method to be relied upon is set forth by the Developer, DT G Block, LLC, in Developer's Prospectus and the method set forth in the Developer's Prospectus may result in a square footage calculation less than the method used here. Consult the Developer's Prospectus for information on what is offered with the Unit and the calculation of the Unit square footage and dimensions.

# THE CROSBY

MIAMI WORLDCENTER

## The RESIDENCES

**B1**  
2 Bed / 2 Bath

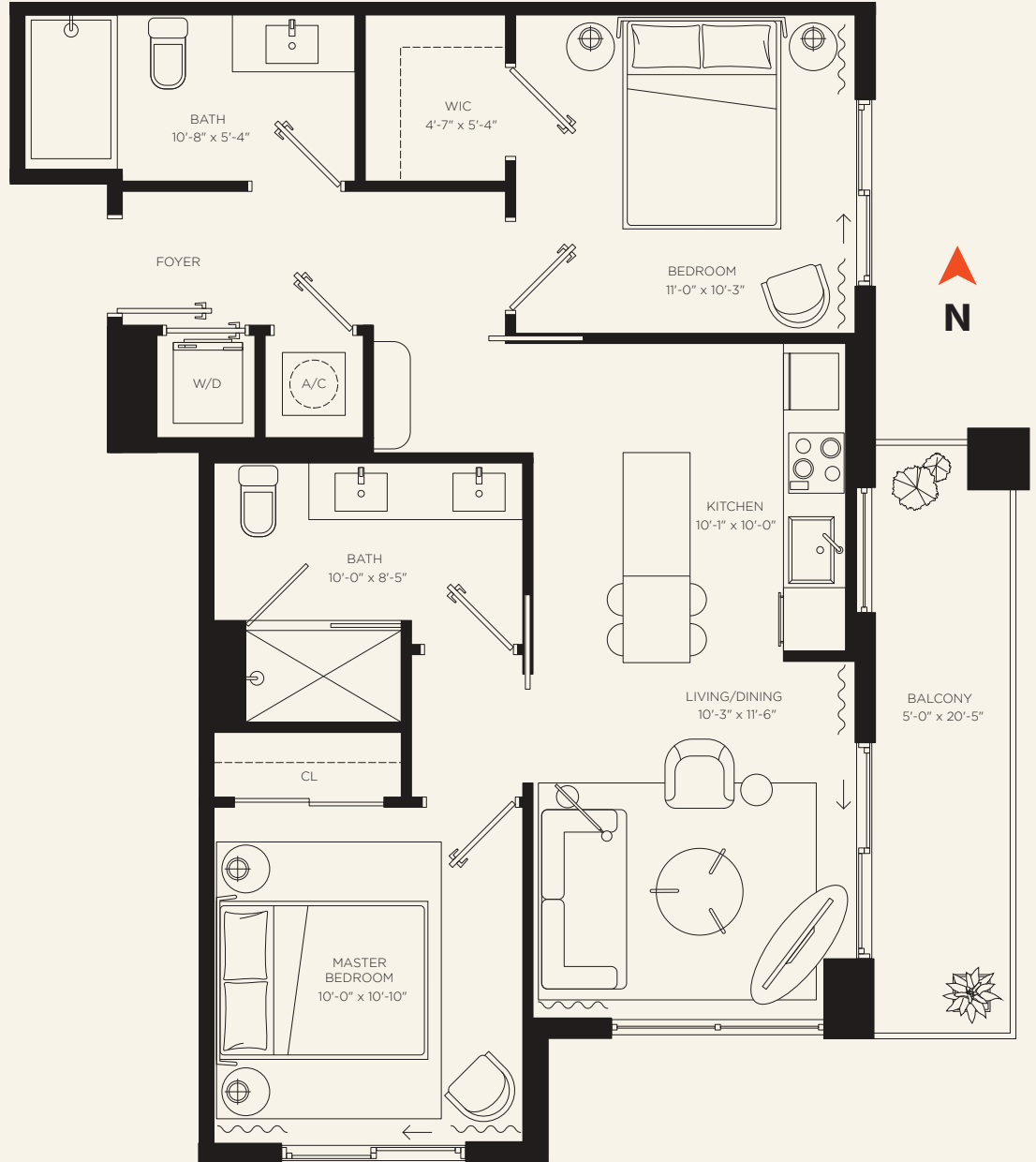


**INTERIOR**  
825 SF | 77 m<sup>2</sup>

**EXTERIOR**  
100 SF | 9 m<sup>2</sup>

**TOTAL AREA**  
925 SF | 86 m<sup>2</sup>

**MIAMI LIVING**  
*Downtown Sophistication*



786 4374 236  
Info@TheCrosbyMiami.com  
www.TheCrosbyMiami.com

**Sales Gallery**  
698 NE 1st Avenue, Suite 184  
Miami FL 33132



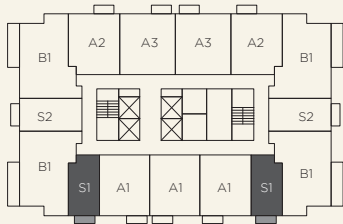
The dimensions stated for this unit floor plan are approximate because there are various recognized methods for calculating the square footage of a unit. The square footage stated here is calculated from the exterior boundaries of the exterior walls to the centerline of interior demising walls without deductions for cutouts, curves, or architectural features. This method typically results in quoted dimensions greater than the dimensions that would be determined by using other accepted methods. The definition of "Unit" and the calculation method to be relied upon is set forth by the Developer, DT G Block, LLC, in Developer's Prospectus and the method set forth in the Developer's Prospectus may result in a square footage calculation less than the method used here. Consult the Developer's Prospectus for information on what is offered with the Unit and the calculation of the Unit square footage and dimensions.

# THE CROSBY

MIAMI WORLDCENTER

## The RESIDENCES

### S1 Studio / 1 Bath

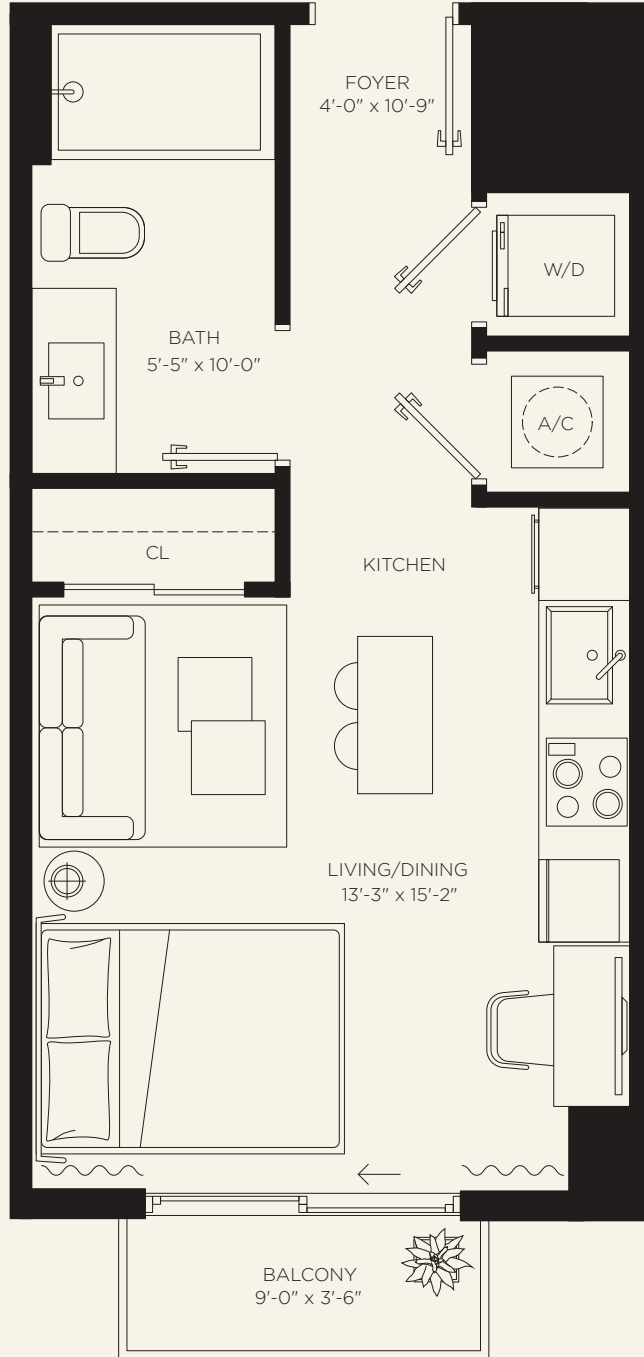


**INTERIOR**  
350 SF | 33 m<sup>2</sup>

**EXTERIOR**  
30 SF | 3 m<sup>2</sup>

**TOTAL AREA**  
380 SF | 36 m<sup>2</sup>

**MIAMI LIVING**  
*Downtown Sophistication*



786 4374 236  
Info@TheCrosbyMiami.com  
www.TheCrosbyMiami.com

**Sales Gallery**  
698 NE 1st Avenue, Suite 184  
Miami FL 33132



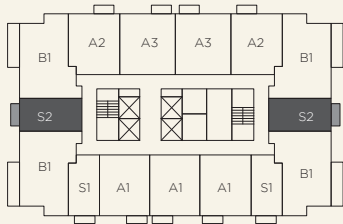
The dimensions stated for this unit floor plan are approximate because there are various recognized methods for calculating the square footage of a unit. The square footage stated here is calculated from the exterior boundaries of the exterior walls to the centerline of interior demising walls without deductions for cutouts, curves, or architectural features. This method typically results in quoted dimensions greater than the dimensions that would be determined by using other accepted methods. The definition of "Unit" and the calculation method to be relied upon is set forth by the Developer, DT G Block, LLC, in Developer's Prospectus and the method set forth in the Developer's Prospectus may result in a square footage calculation less than the method used here. Consult the Developer's Prospectus for information on what is offered with the Unit and the calculation of the Unit square footage and dimensions.

# THE CROSBY

MIAMI WORLDCENTER

## The RESIDENCES

### S2 Studio / 1 Bath

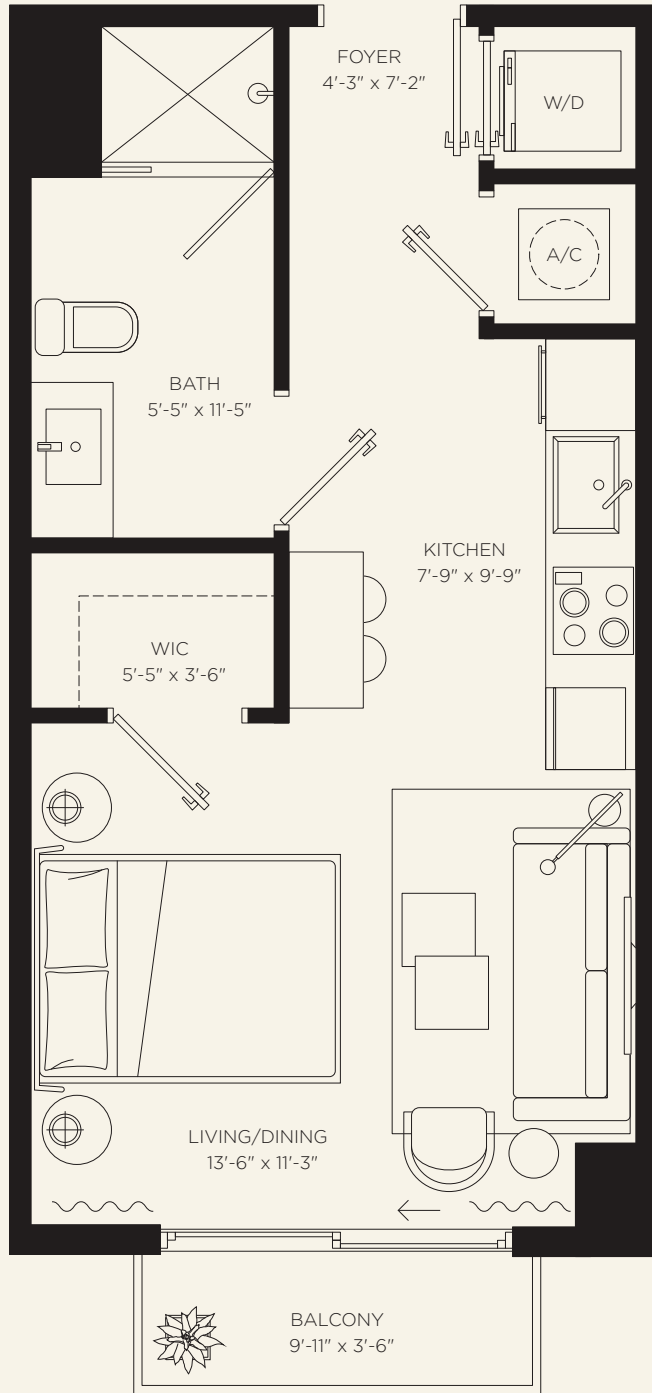


**INTERIOR**  
400 SF | 37 m<sup>2</sup>

**EXTERIOR**  
30 SF | 3 m<sup>2</sup>

**TOTAL AREA**  
430 SF | 40 m<sup>2</sup>

**MIAMI LIVING**  
*Downtown Sophistication*



786 4374 236  
Info@TheCrosbyMiami.com  
www.TheCrosbyMiami.com

**Sales Gallery**  
698 NE 1st Avenue, Suite 184  
Miami FL 33132



The dimensions stated for this unit floor plan are approximate because there are various recognized methods for calculating the square footage of a unit. The square footage stated here is calculated from the exterior boundaries of the exterior walls to the centerline of interior demising walls without deductions for cutouts, curves, or architectural features. This method typically results in quoted dimensions greater than the dimensions that would be determined by using other accepted methods. The definition of "Unit" and the calculation method to be relied upon is set forth by the Developer, DT G Block, LLC, in Developer's Prospectus and the method set forth in the Developer's Prospectus may result in a square footage calculation less than the method used here. Consult the Developer's Prospectus for information on what is offered with the Unit and the calculation of the Unit square footage and dimensions.