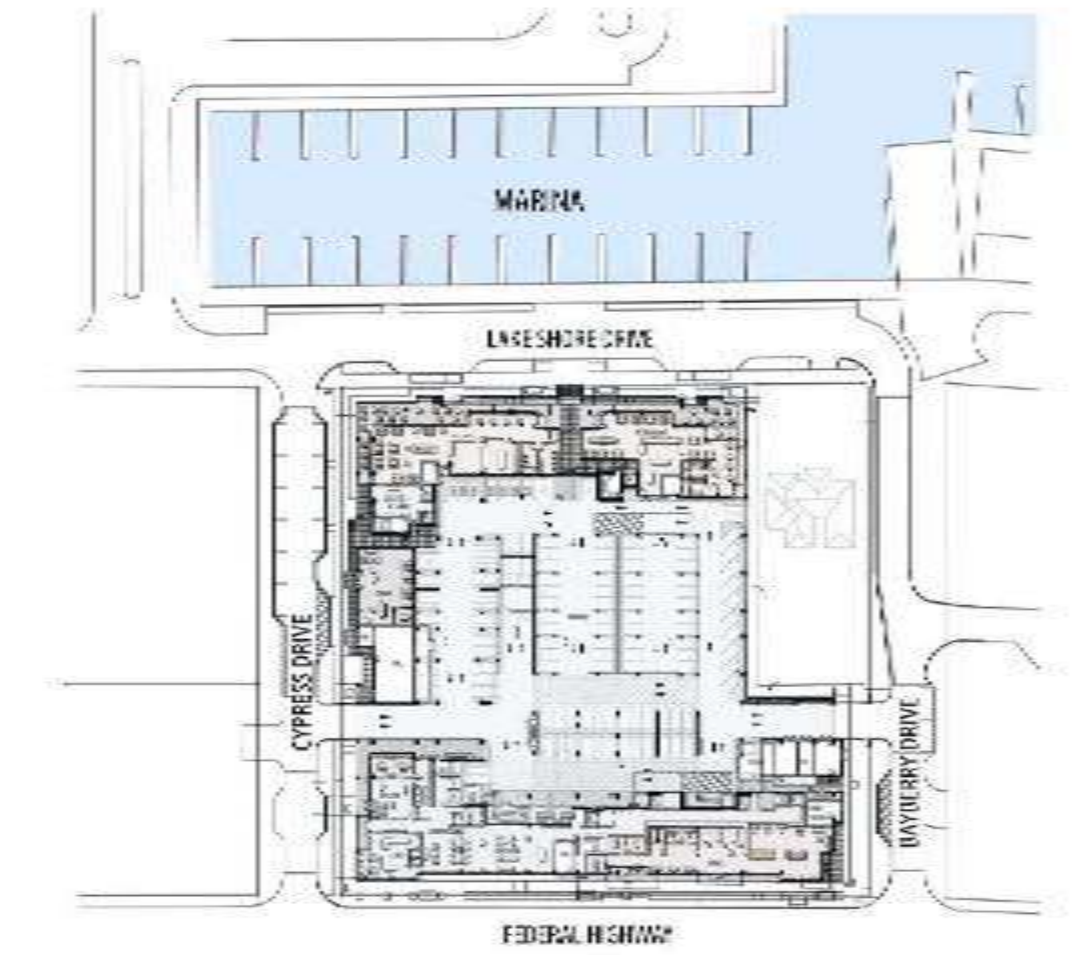
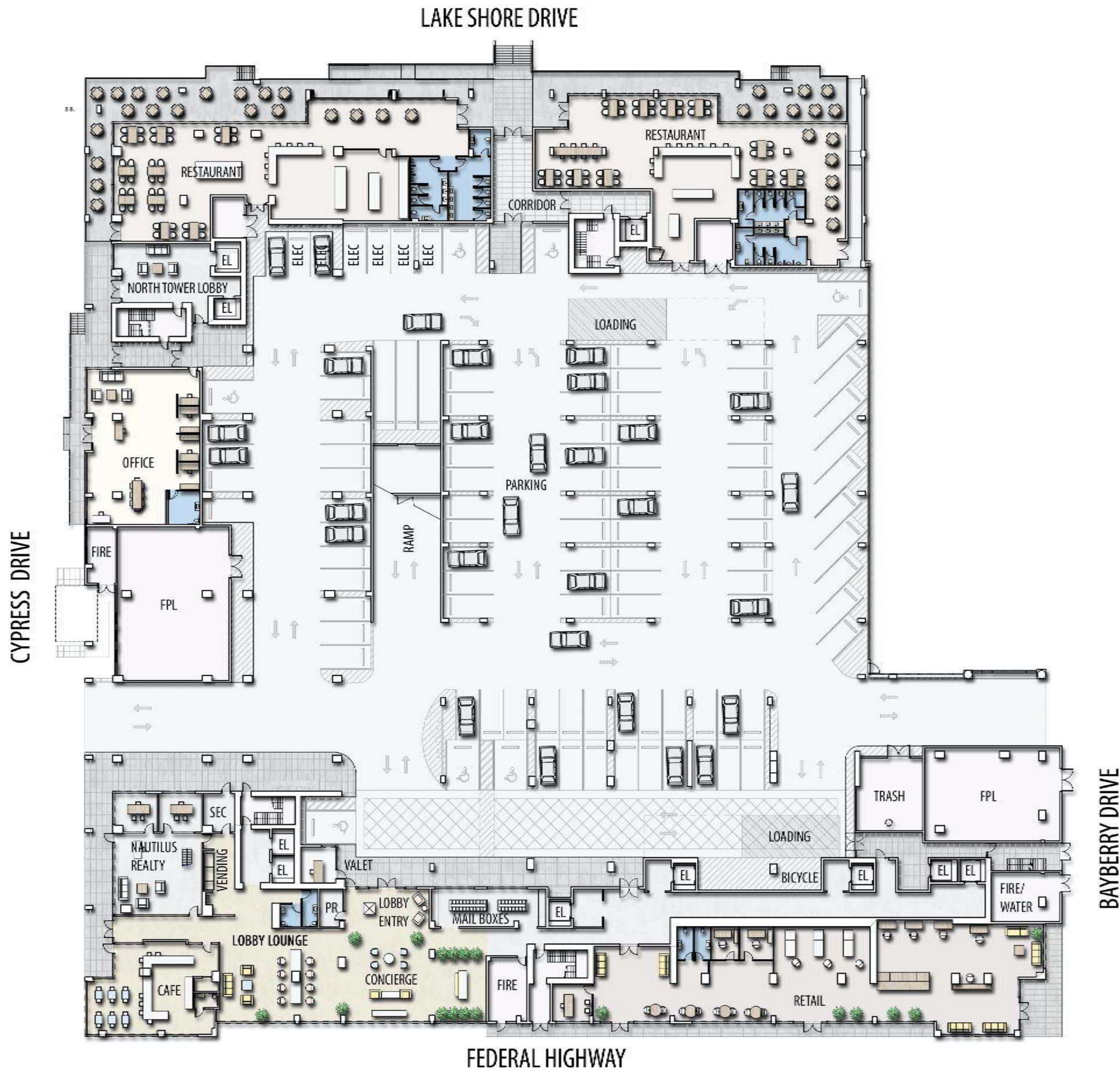
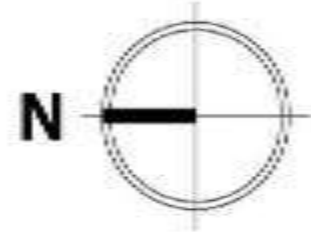


1 ST FLOOR



LOCATION MAP

LEGEND

- EL ELEVATOR
- PR PACKAGE ROOM
- SEC SECURITY ROOM

NAUTILUS 220

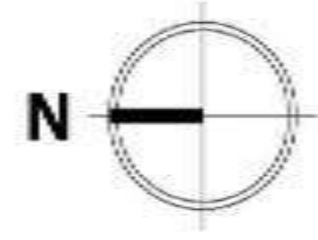
CONDOMINIUMS | WATERFRONT RESTAURANTS | RETAIL SHOPS | PROFESSIONAL OFFICE

220 LAKESHORE DRIVE | LAKE PARK, FLORIDA 33403 | 561-336-9272 | NAUTILUS220.COM

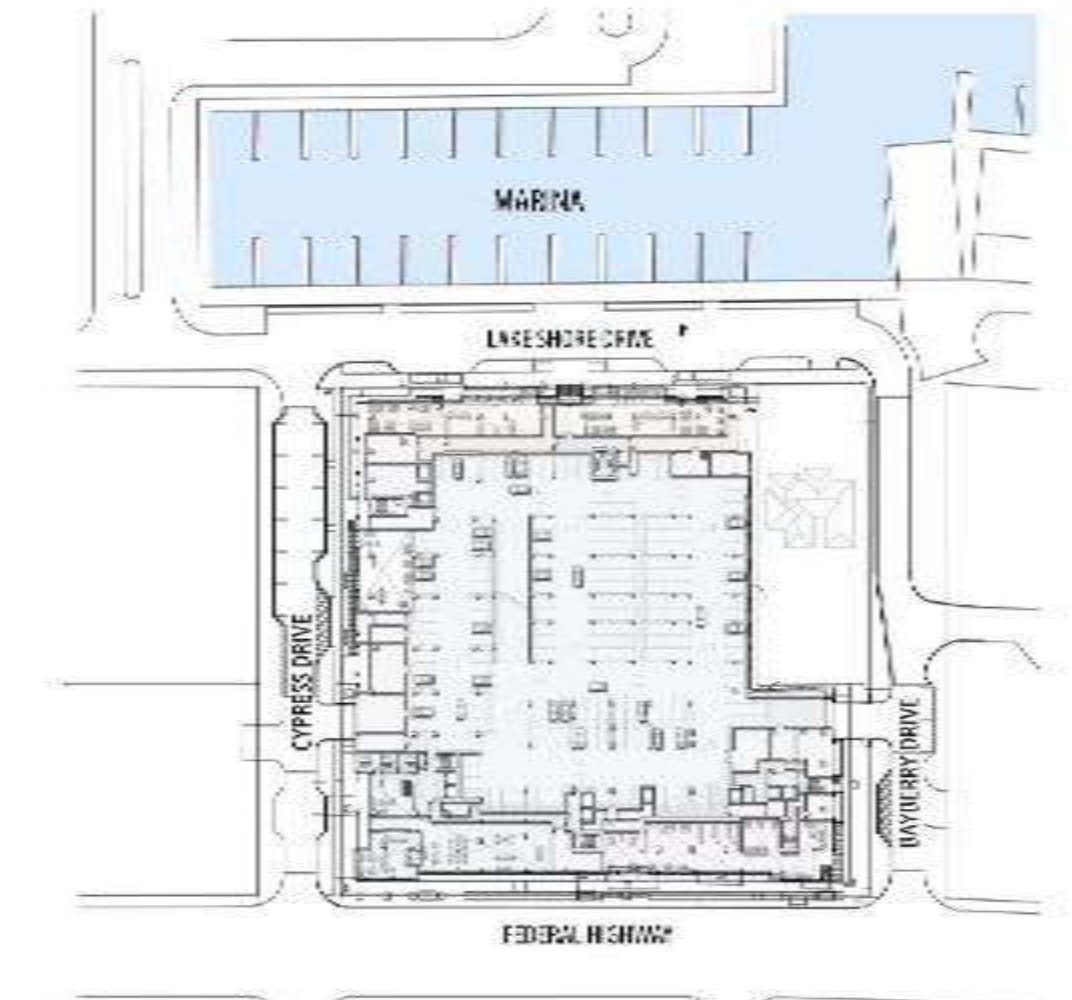
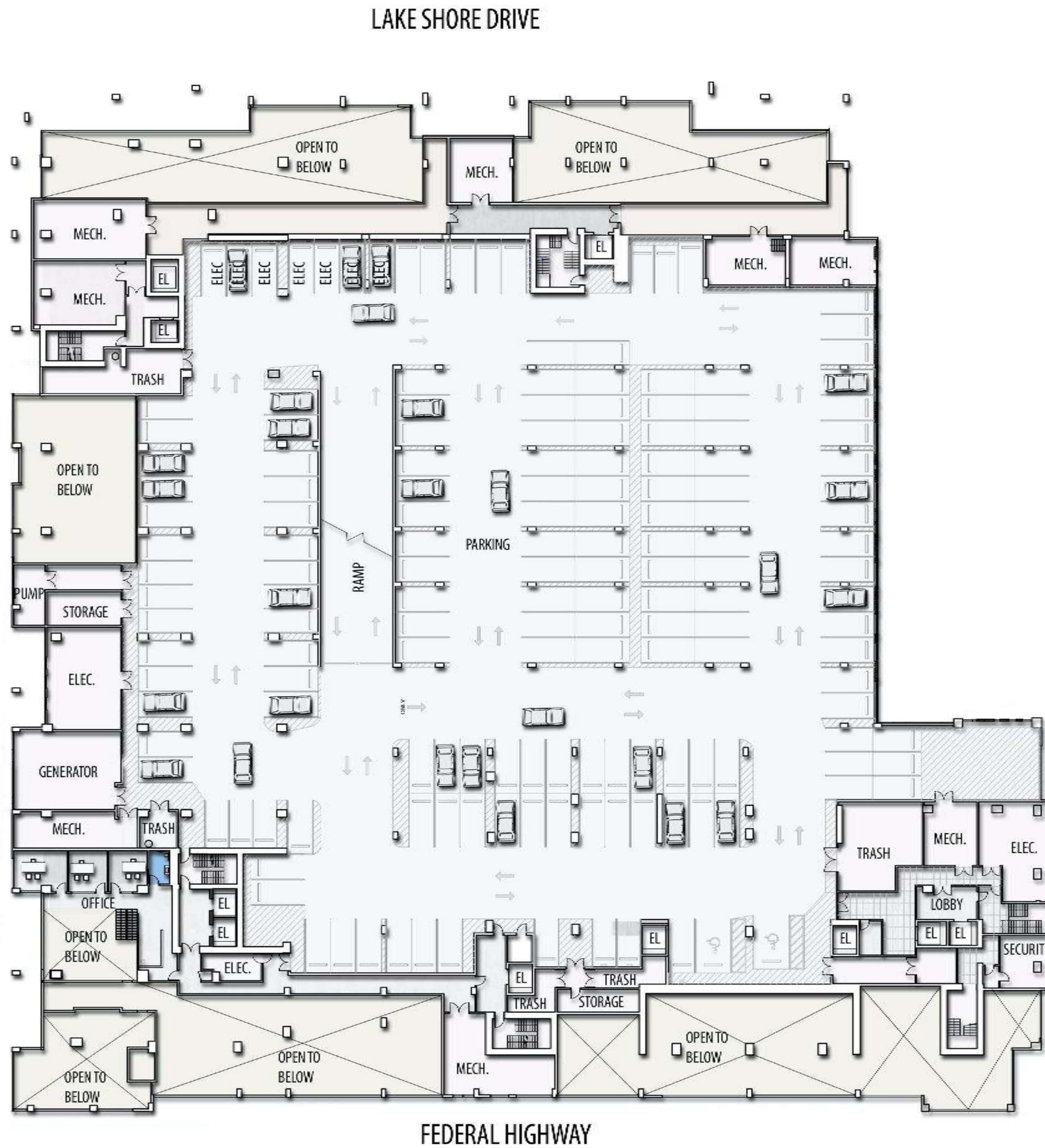


Stated dimensions are measured to the exterior boundaries of the exterior walls and the centerline of interior dividing walls and in fact vary from the dimensions that would be determined by using the description and definition of the "Unit" set forth in the Declaration, which generally only includes the interior airspace between the perimeter walls and excludes interior structural components. Additionally, measurements of rooms set forth on any floor plan are generally taken at the greatest points of each given room (as if the room were a perfect rectangle), without regard for any cutouts. Accordingly, the area of the actual room will typically be smaller than the product obtained by multiplying the stated length times width. All dimensions are approximate, and all floor plans and development plans are subject to change.

2 ND FLOOR



CYPRESS DRIVE



LOCATION MAP

BAYBERRY DRIVE

LEGEND

- EL ELEVATOR
- MECH MECHANICAL ROOM

NAUTILUS 220

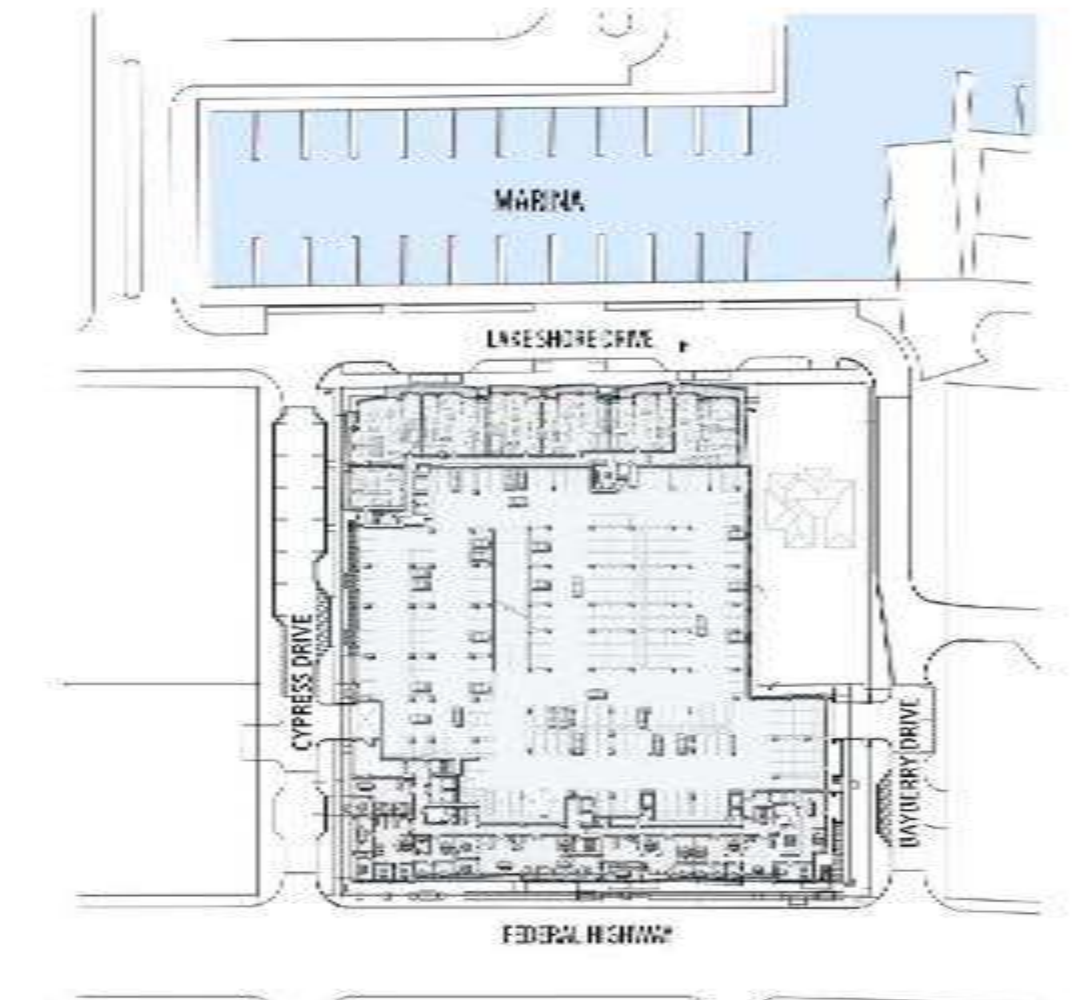
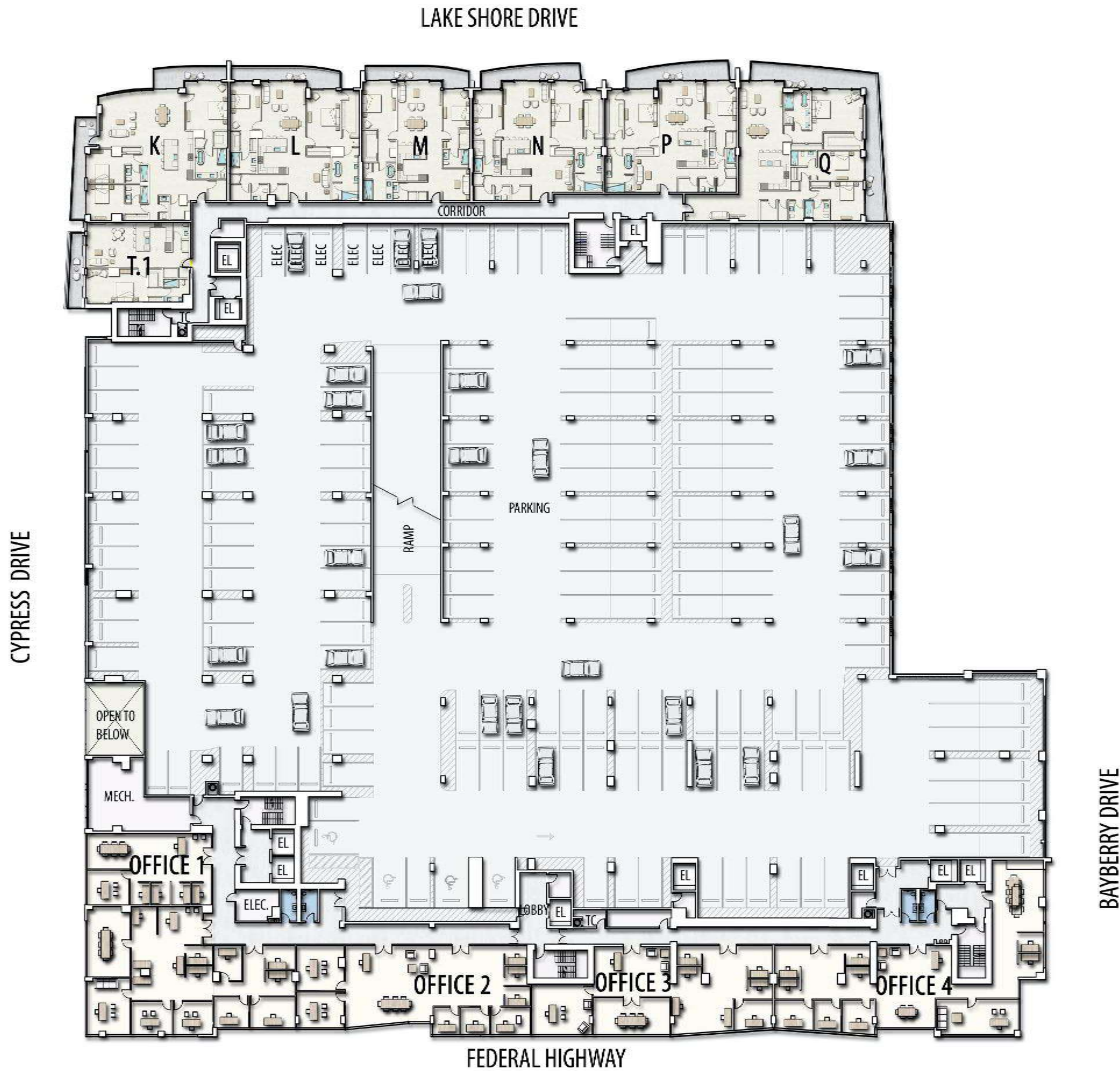
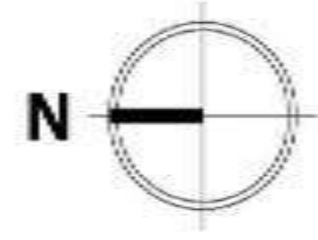
CONDOMINIUMS | WATERFRONT RESTAURANTS | RETAIL SHOPS | PROFESSIONAL OFFICE

220 LAKESHORE DRIVE | LAKE PARK, FLORIDA 33403 | 561-336-9272 | NAUTILUS220.COM



Stated dimensions are measured to the exterior boundaries of the exterior walls and the centerline of interior dividing walls and in fact vary from the dimensions that would be determined by using the description and definition of the "Unit" set forth in the Declaration, which generally only includes the interior airspace between the perimeter walls and excludes interior structural components. Additionally, measurements of rooms set forth on any floor plan are generally taken at the greatest points of each given room (as if the room were a perfect rectangle), without regard for any cutouts. Accordingly, the area of the actual room will typically be smaller than the product obtained by multiplying the stated length times width. All dimensions are approximate, and all floor plans and cross-section plans are subject to change.

3 RD FLOOR



LOCATION MAP

LEGEND

- EL ELEVATOR
- MECH MECHANICAL ROOM
- TC TRASH CHUTE

NAUTILUS 220

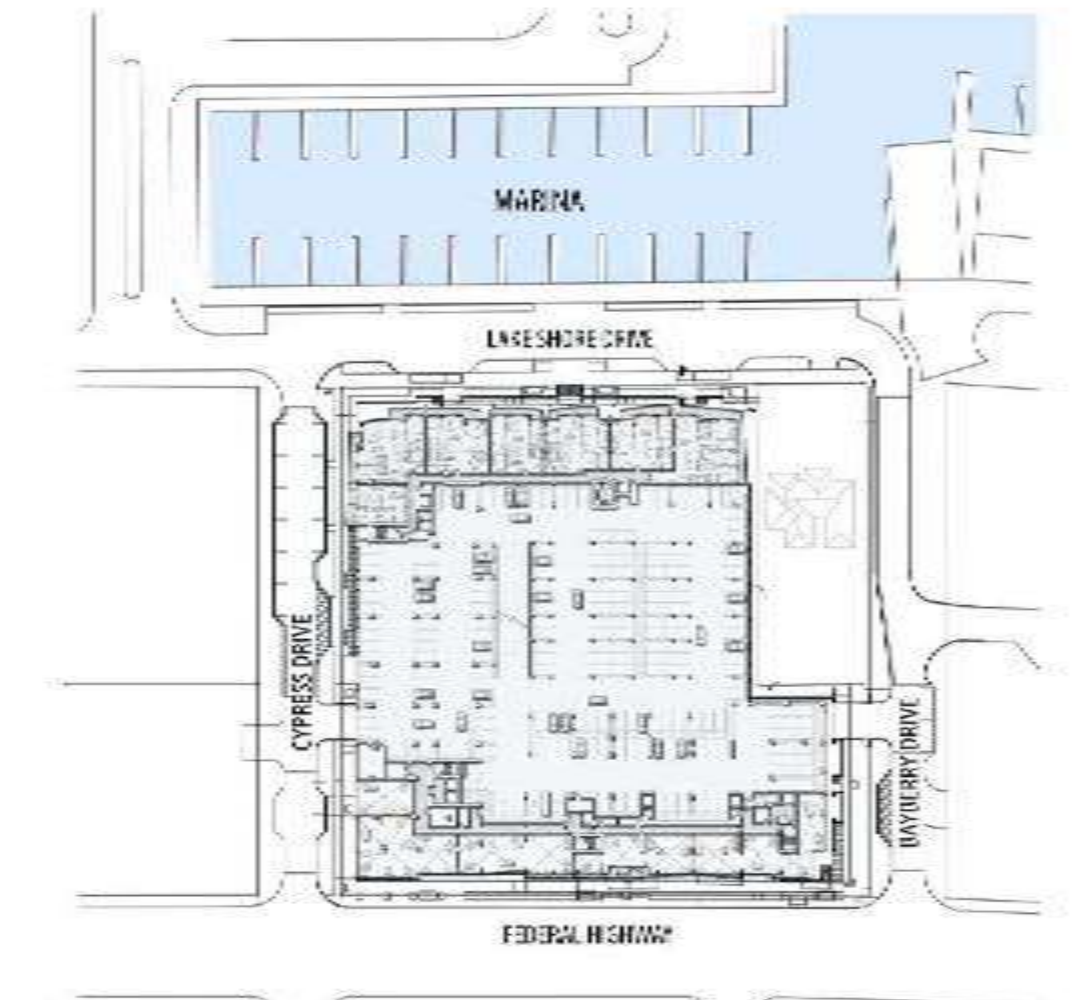
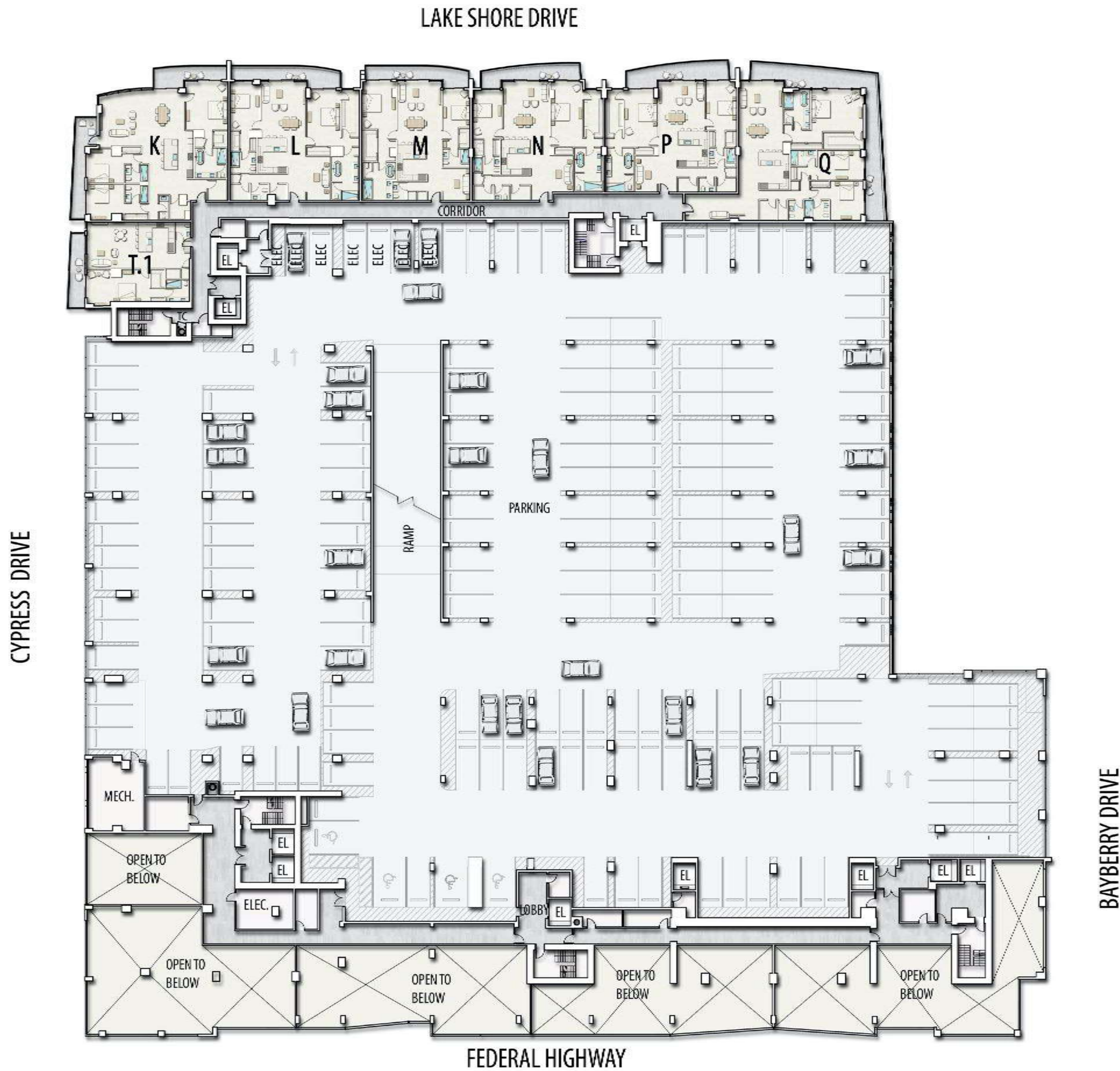
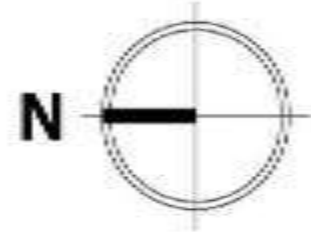
CONDOMINIUMS | WATERFRONT RESTAURANTS | RETAIL SHOPS | PROFESSIONAL OFFICE

220 LAKESHORE DRIVE | LAKE PARK, FLORIDA 33403 | 561-336-9272 | NAUTILUS220.COM



Stated dimensions are measured to the exterior boundaries of the exterior walls and the centerline of interior dividing walls and in fact vary from the dimensions that would be determined by using the description and definition of the "Unit" set forth in the Declaration, which generally only includes the interior airspace between the perimeter walls and excludes interior structural components. Additionally, measurements of rooms set forth on any floor plan are generally taken at the greatest points of each given room (as if the room were a perfect rectangle), without regard for any cutouts. Accordingly, the area of the actual room will typically be smaller than the product obtained by multiplying the stated length times width. All dimensions are approximate, and all floor plans and cross-section plans are subject to change.

4TH FLOOR



LOCATION MAP

LEGEND

- EL ELEVATOR
- MECH MECHANICAL ROOM
- TC TRASH CHUTE

NAUTILUS 220

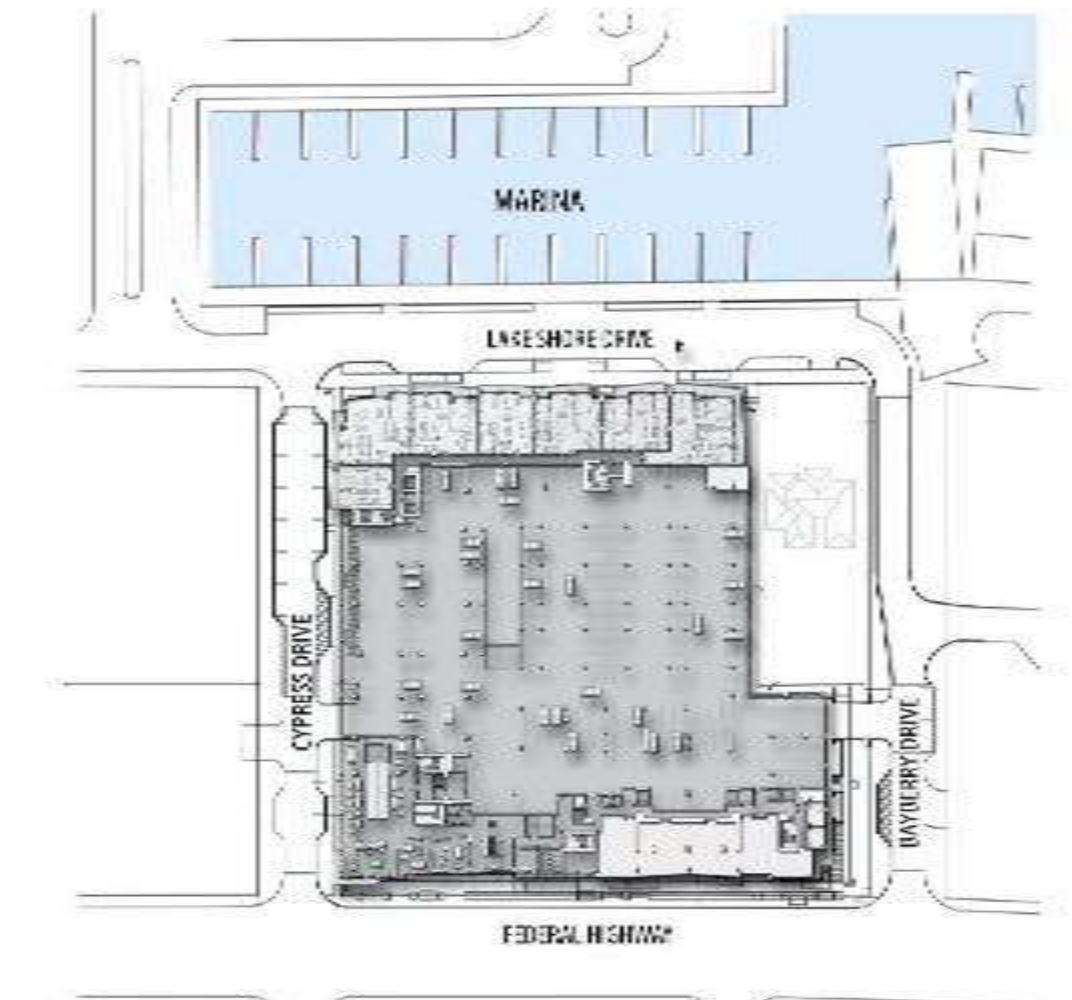
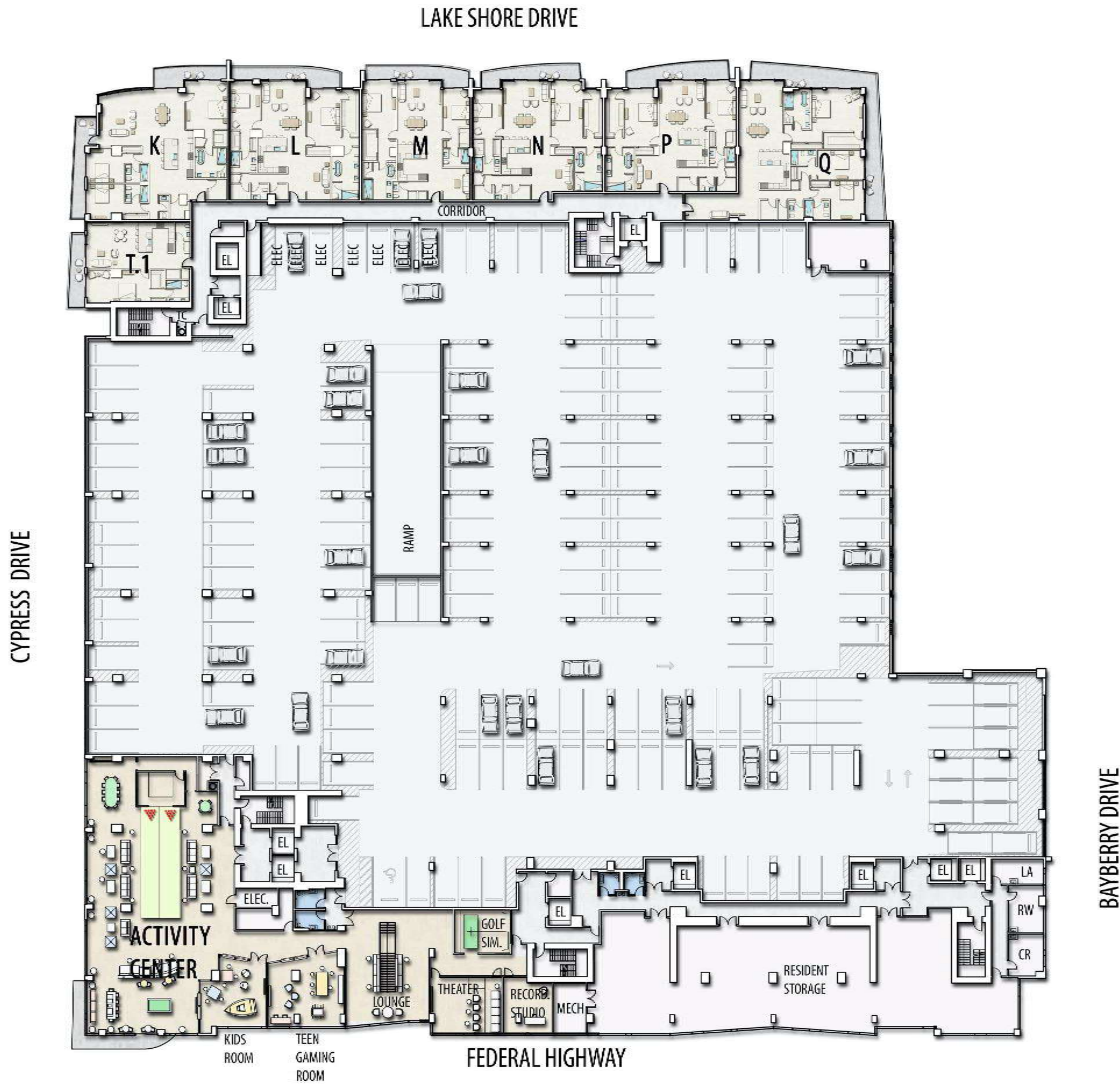
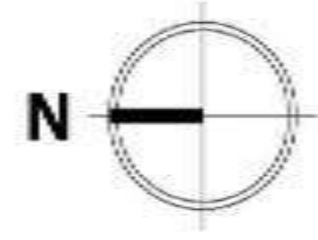
CONDOMINIUMS | WATERFRONT RESTAURANTS | RETAIL SHOPS | PROFESSIONAL OFFICE

220 LAKESHORE DRIVE | LAKE PARK, FLORIDA 33403 | 561-336-9272 | NAUTILUS220.COM



Stated dimensions are measured to the exterior boundaries of the exterior walls and the centerline of interior dividing walls and in fact vary from the dimensions that would be determined by using the description and definition of the "Unit" set forth in the Declaration, which generally only includes the interior airspace between the perimeter walls and excludes interior structural components. Additionally, measurements of rooms set forth on any floor plan are generally taken at the greatest points of each given room (as if the room were a perfect rectangle), without regard for any cutouts. Accordingly, the area of the actual room will typically be smaller than the product obtained by multiplying the stated length times width. All dimensions are approximate, and all floor plans and cross-sections are subject to change.

5 TH FLOOR



LOCATION MAP

LEGEND

- CR CRAFTS ROOM
- EL ELEVATOR
- GOLF SIM. GOLF SIMULATOR
- LA COMMERCIAL LAUNDRY
- RW RESIDENT WORK SHOP
- MECH MECHANICAL ROOM
- TC TRASH CHUTE

NAUTILUS 220

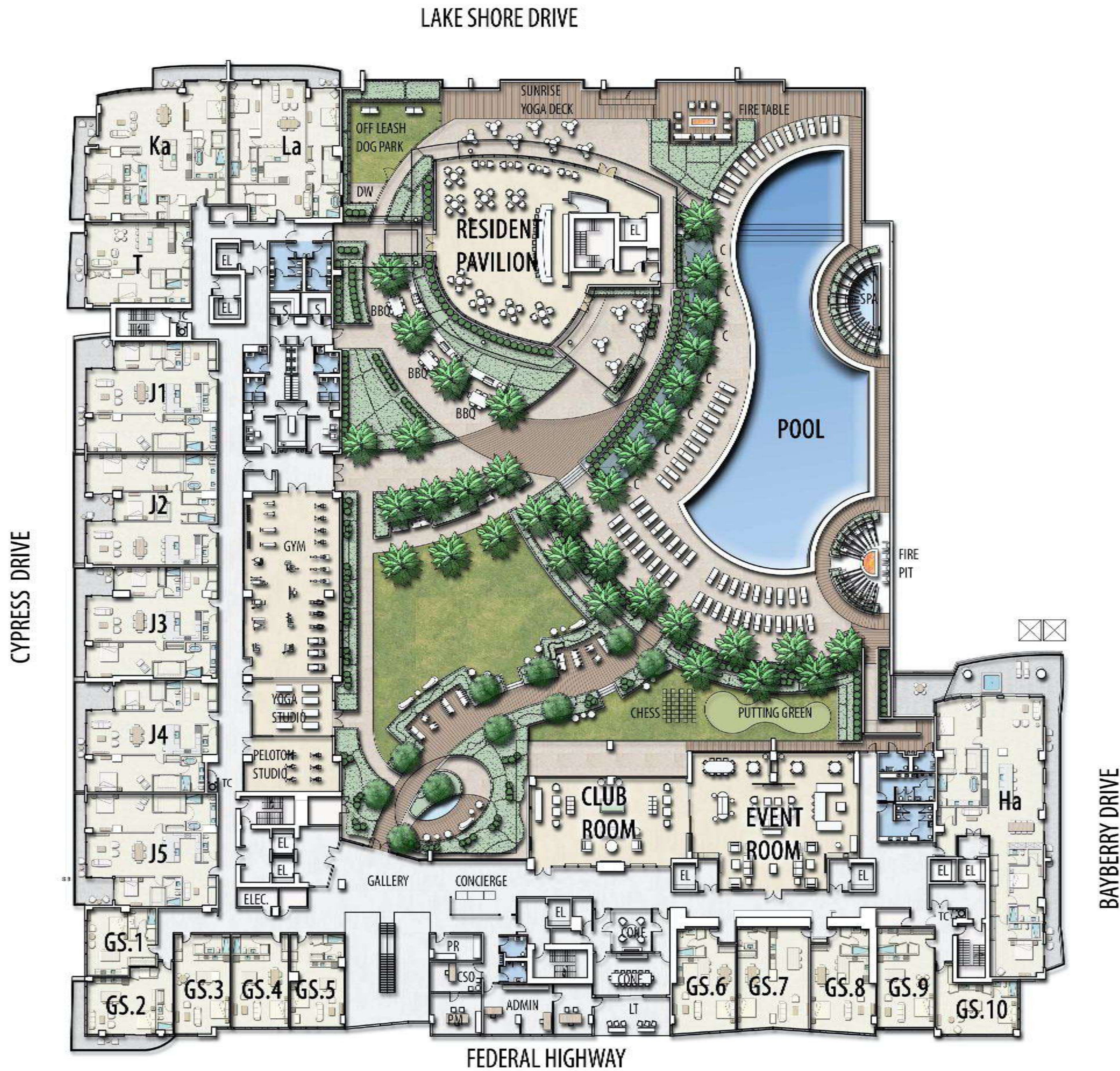
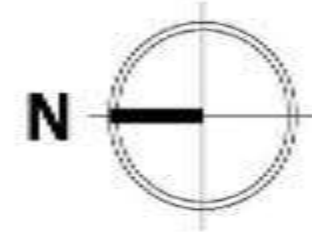
CONDOMINIUMS | WATERFRONT RESTAURANTS | RETAIL SHOPS | PROFESSIONAL OFFICE

220 LAKESHORE DRIVE | LAKE PARK, FLORIDA 33403 | 561-336-9272 | NAUTILUS220.COM



Stated dimensions are measured to the exterior boundaries of the exterior walls and the centerline of interior dividing walls and in fact vary from the dimensions that would be determined by using the description and definition of the "Unit" set forth in the Declaration, which generally only includes the interior airspace between the perimeter walls and excludes interior structural components. Additionally, measurements of rooms set forth on any floor plan are generally taken at the widest points of each given room (as if the room were a perfect rectangle), without regard for any cutouts. Accordingly, the area of the actual room will typically be smaller than the product obtained by multiplying the stated length times width. All dimensions are approximate, and all floor plans and development plans are subject to change.

6 TH FLOOR



LOCATION MAP

LEGEND

- ADMIN ADMINISTRATION
- C CABANA
- CONF CONFERENCE ROOM
- CSO CHIEF SECURITY OFFICER
- DW DOG WASHING STATION
- EL ELEVATOR
- ELEC ELECTRICAL ROOM
- GS GUEST SUITE
- LT LOUNGE TERRACE
- MECH MECHANICAL ROOM
- PM PROPERTY MANAGER
- PR PACKAGE ROOM
- S SAUNA/STEAM ROOM
- TC TRASH CHUTE

NAUTILUS 220

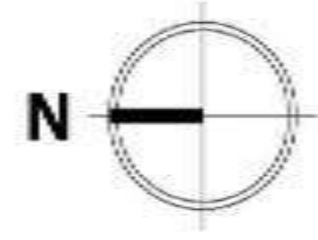
CONDOMINIUMS | WATERFRONT RESTAURANTS | RETAILS HOPS | PROFESSIONAL OFFICE

220 LAKESHORE DRIVE | LAKE PARK, FLORIDA 33403 | 561-336-9272 | NAUTILUS220.COM

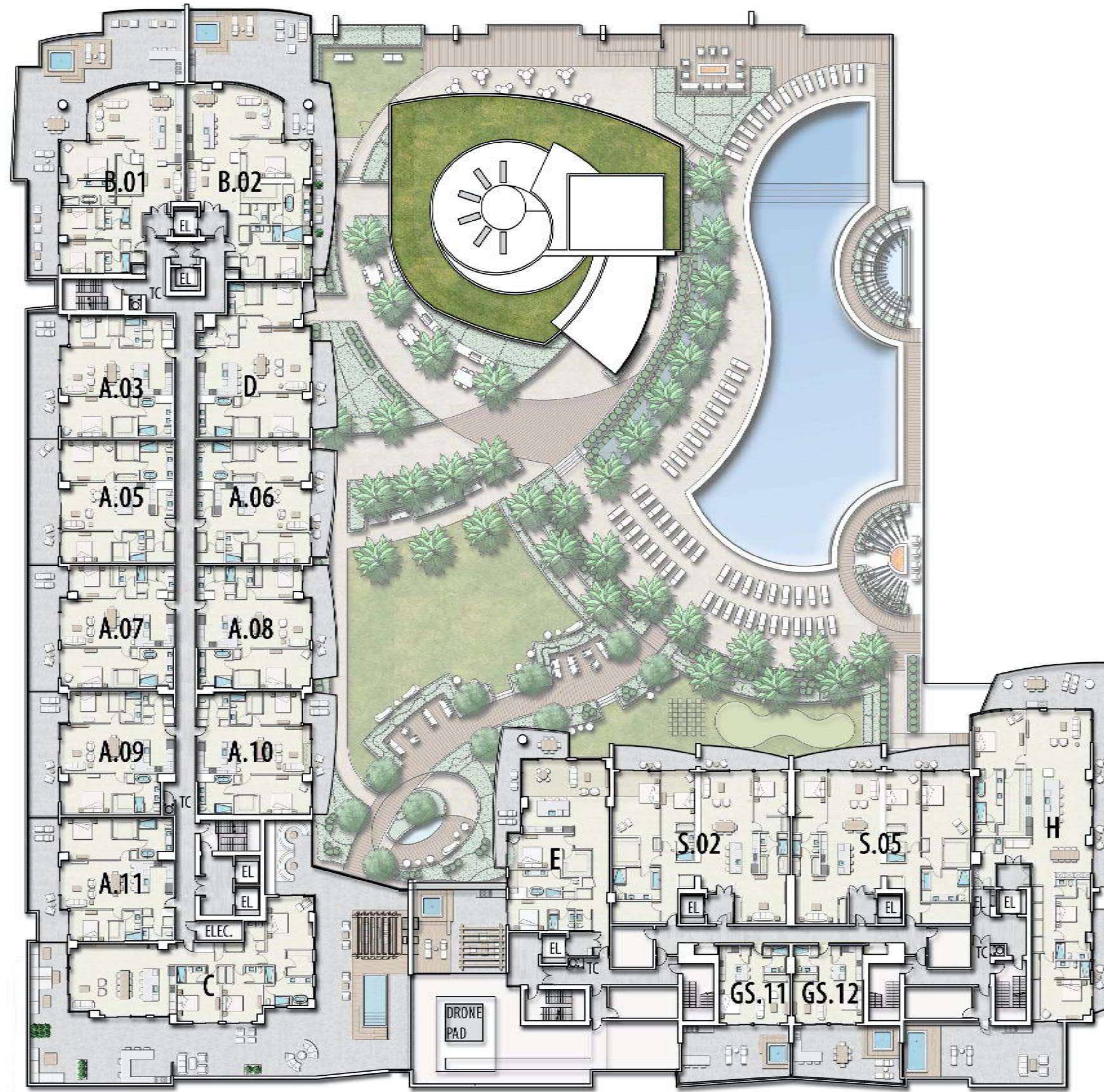


Stated dimensions are measured to the exterior boundaries of the exterior walls and the centerline of interior dividing walls and in fact vary from the dimensions that would be determined by using the description and definition of the "Unit" set forth in the Declaration, which generally only includes the interior airspace between the perimeter walls and excludes interior structural components. Additionally, measurements of rooms set forth on any floor plan are generally taken at the greatest points of each given room (as if the room were a perfect rectangle), without regard for any cutouts. Accordingly, the area of the actual room will typically be smaller than the product obtained by multiplying the stated length times width. All dimensions are approximate, and all floor plans and development plans are subject to change.

7TH FLOOR



CYPRESS DRIVE



LOCATION MAP

LEGEND

- EL ELEVATOR
- GS GUEST SUITE
- MECH MECHANICAL ROOM
- TC TRASH CHUTE

BAYBERRY DRIVE

FEDERAL HIGHWAY

NAUTILUS 220

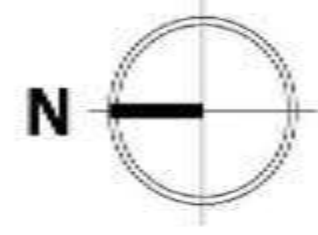
CONDOMINIUMS | WATERFRONT RESTAURANTS | RETAIL SHOPS | PROFESSIONAL OFFICE

220 LAKESHORE DRIVE | LAKE PARK, FLORIDA 33403 | 561-336-9272 | NAUTILUS220.COM

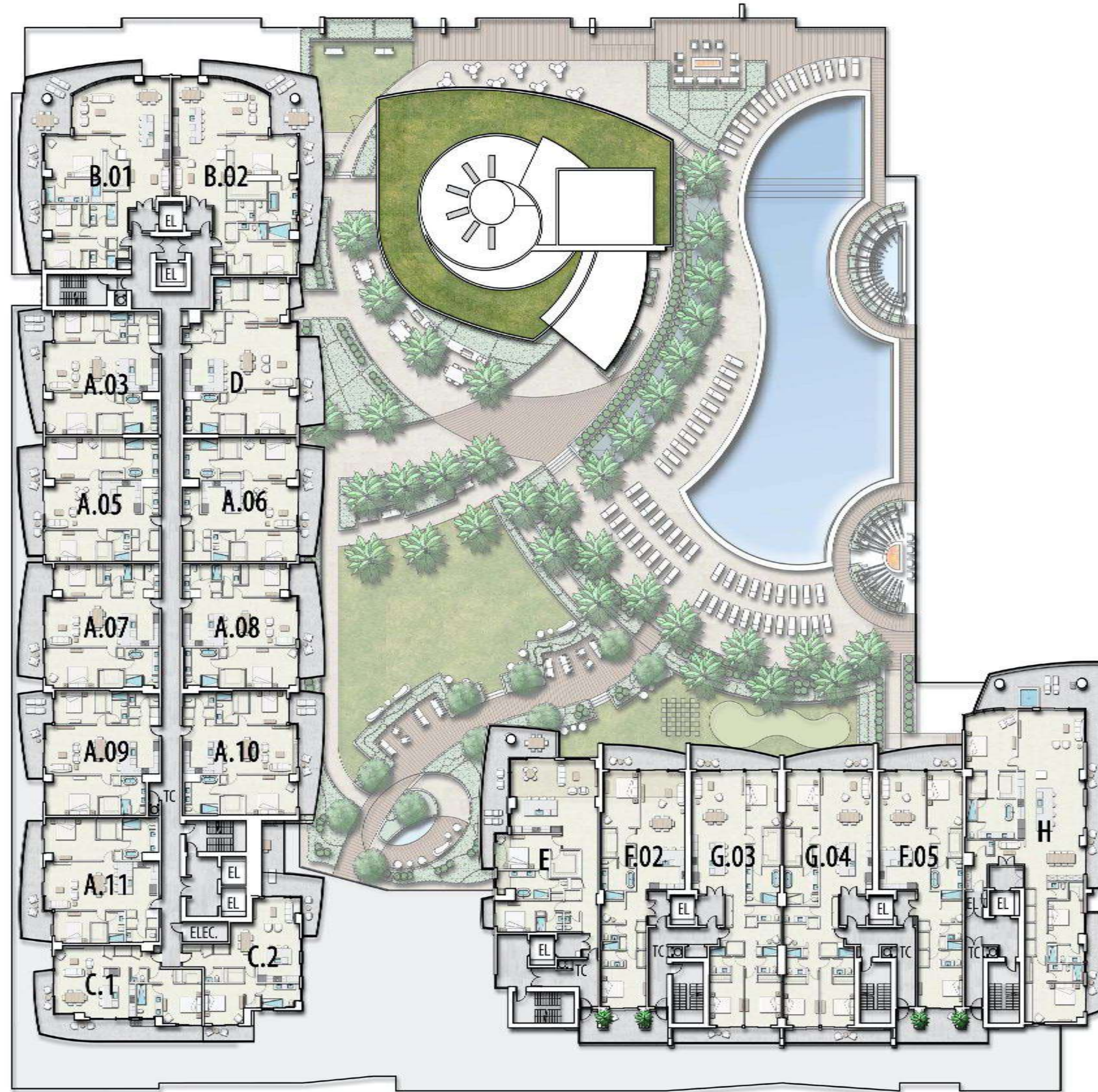


Stated dimensions are measured to the exterior boundaries of the exterior walls and the centerline of interior dividing walls and in fact vary from the dimensions that would be determined by using the description and definition of the "Unit" set forth in the Declaration, which generally only includes the interior airspace between the perimeter walls and excludes interior structural components. Additionally, measurements of rooms set forth on any floor plan are generally taken at the greatest points of each given room (as if the room were a perfect rectangle), without regard for any cutouts. Accordingly, the area of the actual room will typically be smaller than the product obtained by multiplying the stated length times width. All dimensions are approximate, and all floor plans and development plans are subject to change.

8TH TO 12TH FLOOR



CYPRESS DRIVE



FEDERAL HIGHWAY

BAYBERRY DRIVE



LOCATION MAP

LEGEND

- EL ELEVATOR
- MECH MECHANICAL ROOM
- TC TRASH CHUTE

NAUTILUS 220

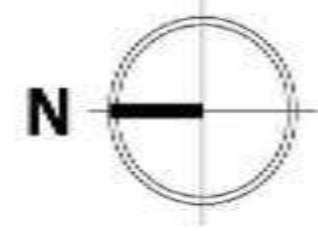
CONDOMINIUMS | WATERFRONT RESTAURANTS | RETAIL SHOPS | PROFESSIONAL OFFICE

220 LAKESHORE DRIVE | LAKE PARK, FLORIDA 33403 | 561-336-9272 | NAUTILUS220.COM

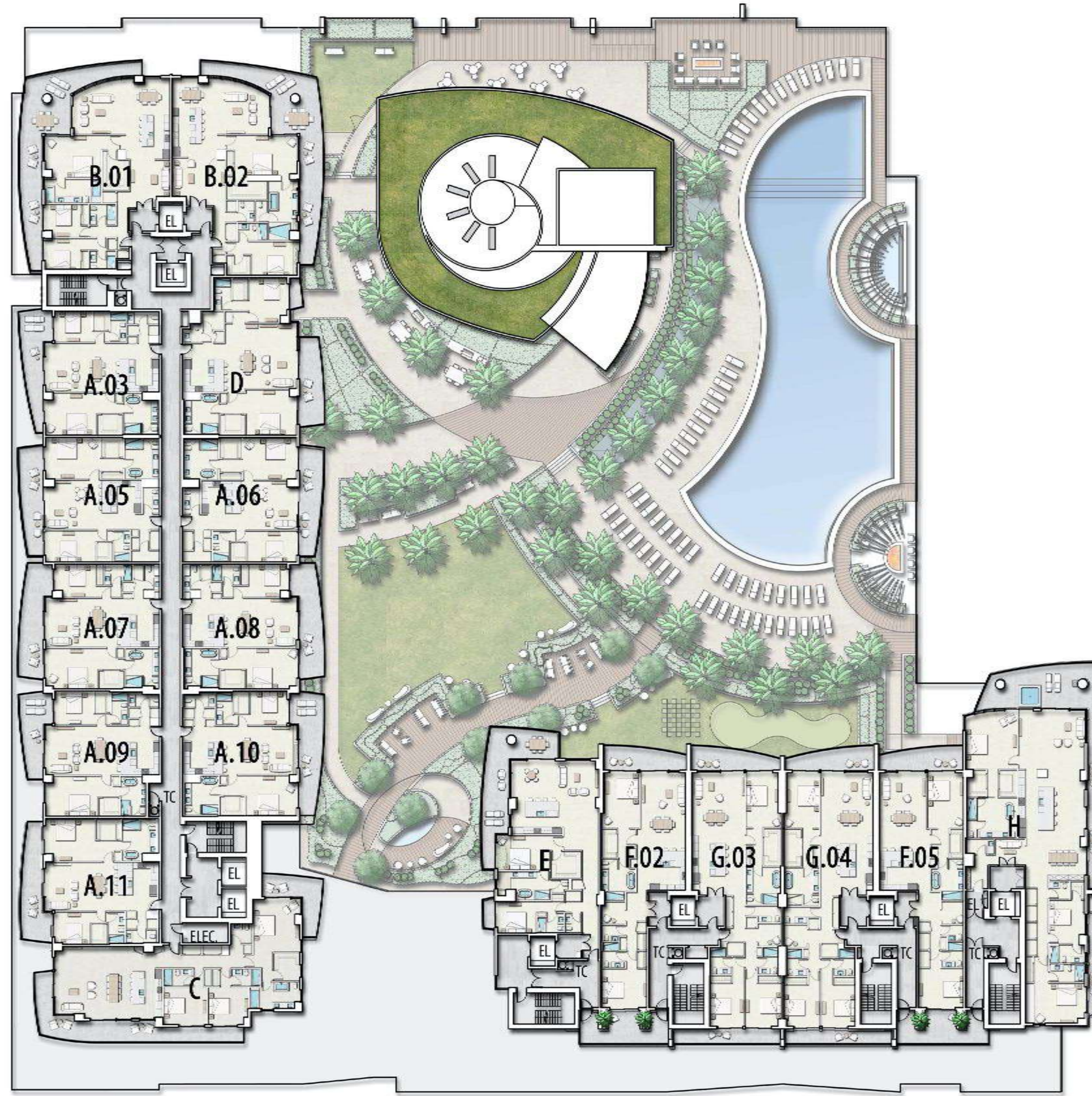


Stated dimensions are measured to the exterior boundaries of the exterior walls and the centerline of interior dividing walls and in fact vary from the dimensions that would be determined by using the description and definition of the "Unit" set forth in the Declaration, which generally only includes the interior airspace between the perimeter walls and excludes interior structural components. Additionally, measurements of rooms set forth on any floor plan are generally taken at the greatest points of each given room (as if the room were a perfect rectangle), without regard for any cutouts. Accordingly, the area of the actual room will typically be smaller than the product obtained by multiplying the stated length times width. All dimensions are approximate, and all floor plans and development plans are subject to change.

14 TH TO 16 TH FLOOR



CYPRESS DRIVE



BAYBERRY DRIVE

LAKE SHORE DRIVE

FEDERAL HIGHWAY



LOCATION MAP

LEGEND

- EL ELEVATOR
- MECH MECHANICAL ROOM
- TC TRASH CHUTE

NAUTILUS 220

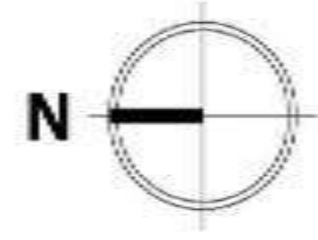
CONDOMINIUMS | WATERFRONT RESTAURANTS | RETAIL SHOPS | PROFESSIONAL OFFICE

220 LAKESHORE DRIVE | LAKE PARK, FLORIDA 33403 | 561-336-9272 | NAUTILUS220.COM



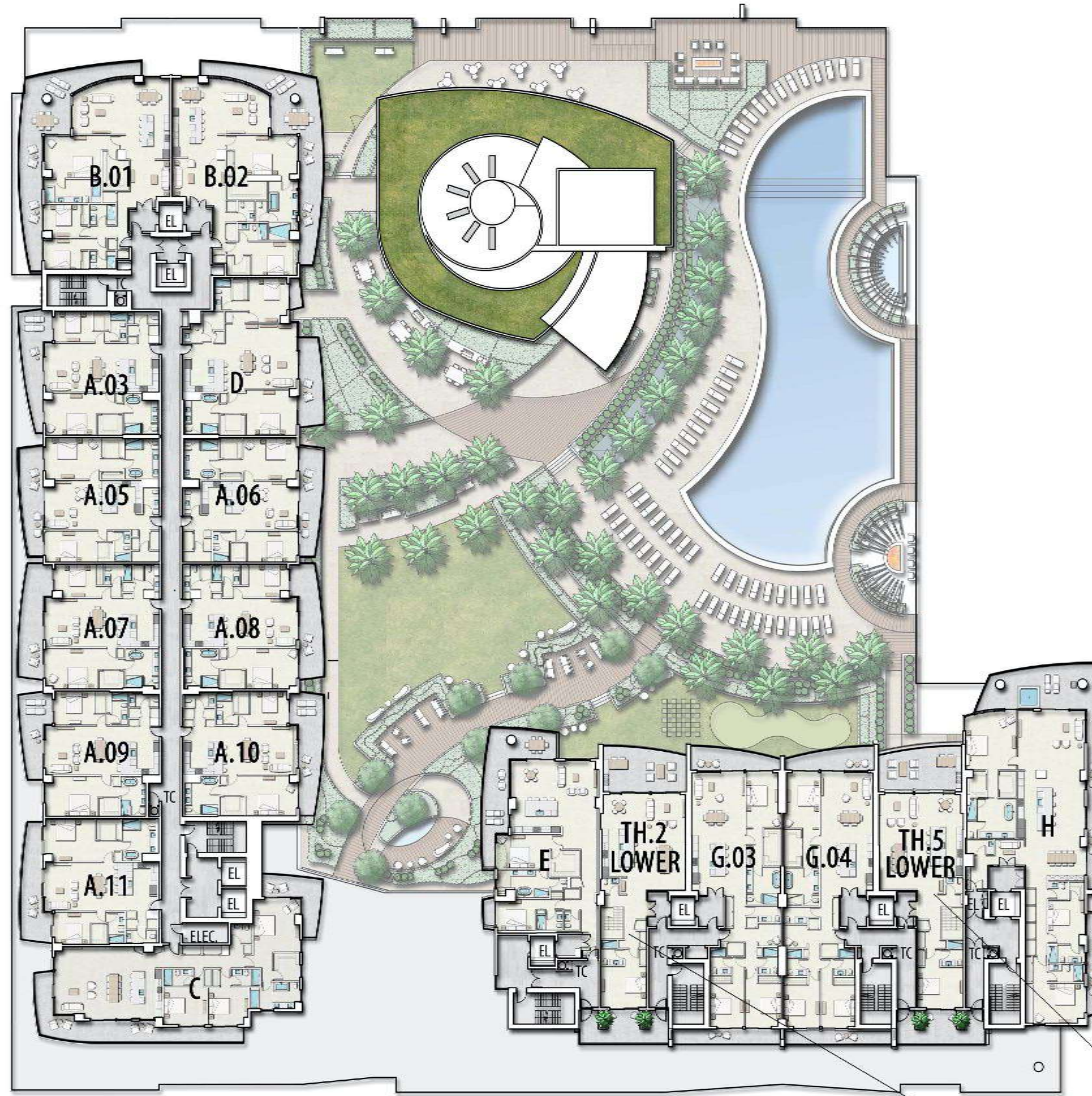
Stated dimensions are measured to the exterior boundaries of the exterior walls and the centerline of interior dividing walls and in fact vary from the dimensions that would be determined by using the description and definition of the "Unit" set forth in the Declaration, which generally only includes the interior airspace between the perimeter walls and excludes interior structural components. Additionally, measurements of rooms set forth on any floor plan are generally taken at the widest points of each given room (as if the room were a perfect rectangle), without regard for any cutouts. Accordingly, the area of the actual room will typically be smaller than the product obtained by multiplying the stated length times width. All dimensions are approximate, and all floor plans and development plans are subject to change.

17TH & 19TH FLOOR



CYPRESS DRIVE

LAKE SHORE DRIVE



LOCATION MAP

LEGEND

- EL ELEVATOR
- MECH MECHANICAL ROOM
- TC TRASH CHUTE

FEDERAL HIGHWAY

BAYBERRY DRIVE

NAUTILUS 220

CONDOMINIUMS | WATERFRONT RESTAURANTS | RETAIL SHOPS | PROFESSIONAL OFFICE

220 LAKESHORE DRIVE | LAKE PARK, FLORIDA 33403 | 561-336-9272 | NAUTILUS220.COM



Stated dimensions are measured to the exterior boundaries of the exterior walls and the centerline of interior dividing walls and in fact vary from the dimensions that would be determined by using the description and definition of the "Unit" set forth in the Declaration, which generally only includes the interior airspace between the perimeter walls and excludes interior structural components. Additionally, measurements of rooms set forth on any floor plan are generally taken at the widest points of each given room (as if the room were a perfect rectangle), without regard for any cutouts. Accordingly, the area of the actual room will typically be smaller than the product obtained by multiplying the stated length times width. All dimensions are approximate, and all floor plans and elevations plans are subject to change.

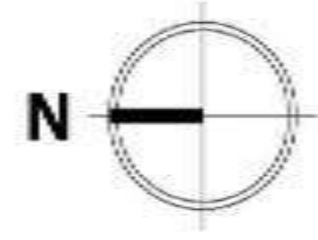


TH.2 UPPER LEVEL



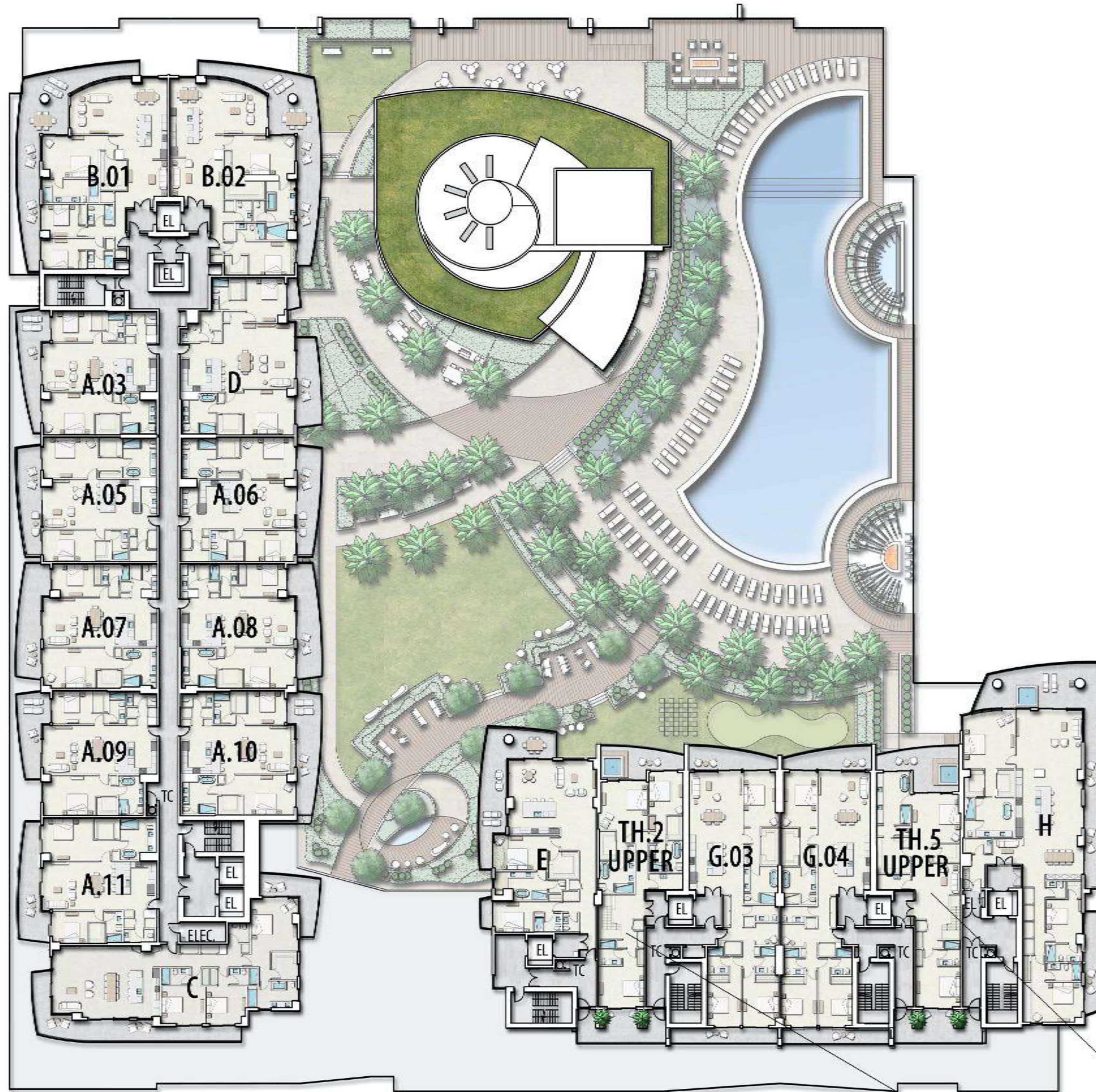
TH.5 UPPER LEVEL

18TH FLOOR



CYPRESS DRIVE

LAKE SHORE DRIVE



LOCATION MAP

LEGEND

- EL ELEVATOR
- MECH MECHANICAL ROOM
- TC TRASH CHUTE

BAYBERRY DRIVE

FEDERAL HIGHWAY

NAUTILUS 220

CONDOMINIUMS | WATERFRONT RESTAURANTS | RETAIL SHOPS | PROFESSIONAL OFFICE

220 LAKESHORE DRIVE | LAKE PARK, FLORIDA 33403 | 561-336-9272 | NAUTILUS220.COM



Stated dimensions are measured to the exterior boundaries of the exterior walls and the centerline of interior dividing walls and in fact vary from the dimensions that would be determined by using the description and definition of the "Unit" set forth in the Declaration, which generally only includes the interior airspace between the perimeter walls and excludes interior structural components. Additionally, measurements of rooms set forth on any floor plan are generally taken at the widest points of each given room (as if the room were a perfect rectangle), without regard for any cutouts. Accordingly, the area of the actual room will typically be smaller than the product obtained by multiplying the stated length times width. All dimensions are approximate, and all floor plans and development plans are subject to change.

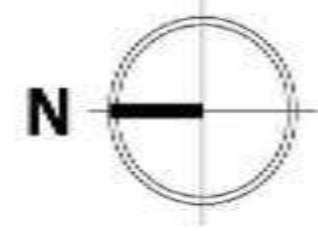


TH.2 LOWER LEVEL



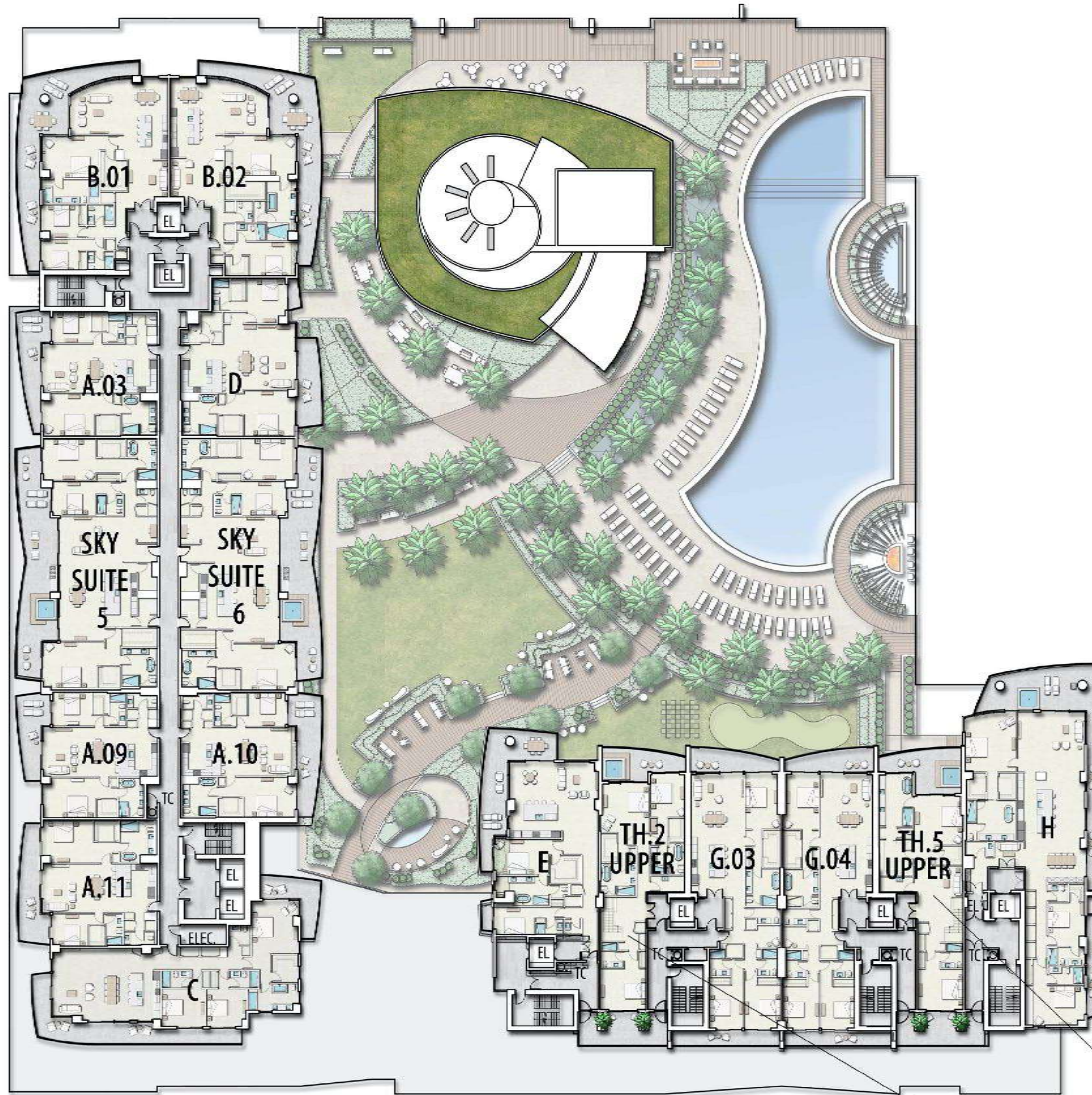
TH.5 LOWER LEVEL

20 TH & 22 ND FLOOR



CYPRESS DRIVE

LAKE SHORE DRIVE



LOCATION MAP

LEGEND

- EL ELEVATOR
- MECH MECHANICAL ROOM
- TC TRASH CHUTE

BAYBERRY DRIVE

FEDERAL HIGHWAY

NAUTILUS 220

CONDOMINIUMS | WATERFRONT RESTAURANTS | RETAIL SHOPS | PROFESSIONAL OFFICE

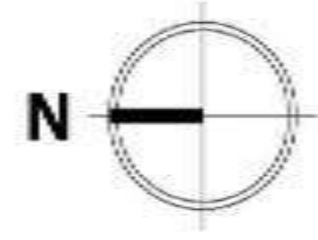
220 LAKESHORE DRIVE | LAKE PARK, FLORIDA 33403 | 561-336-9272 | NAUTILUS220.COM



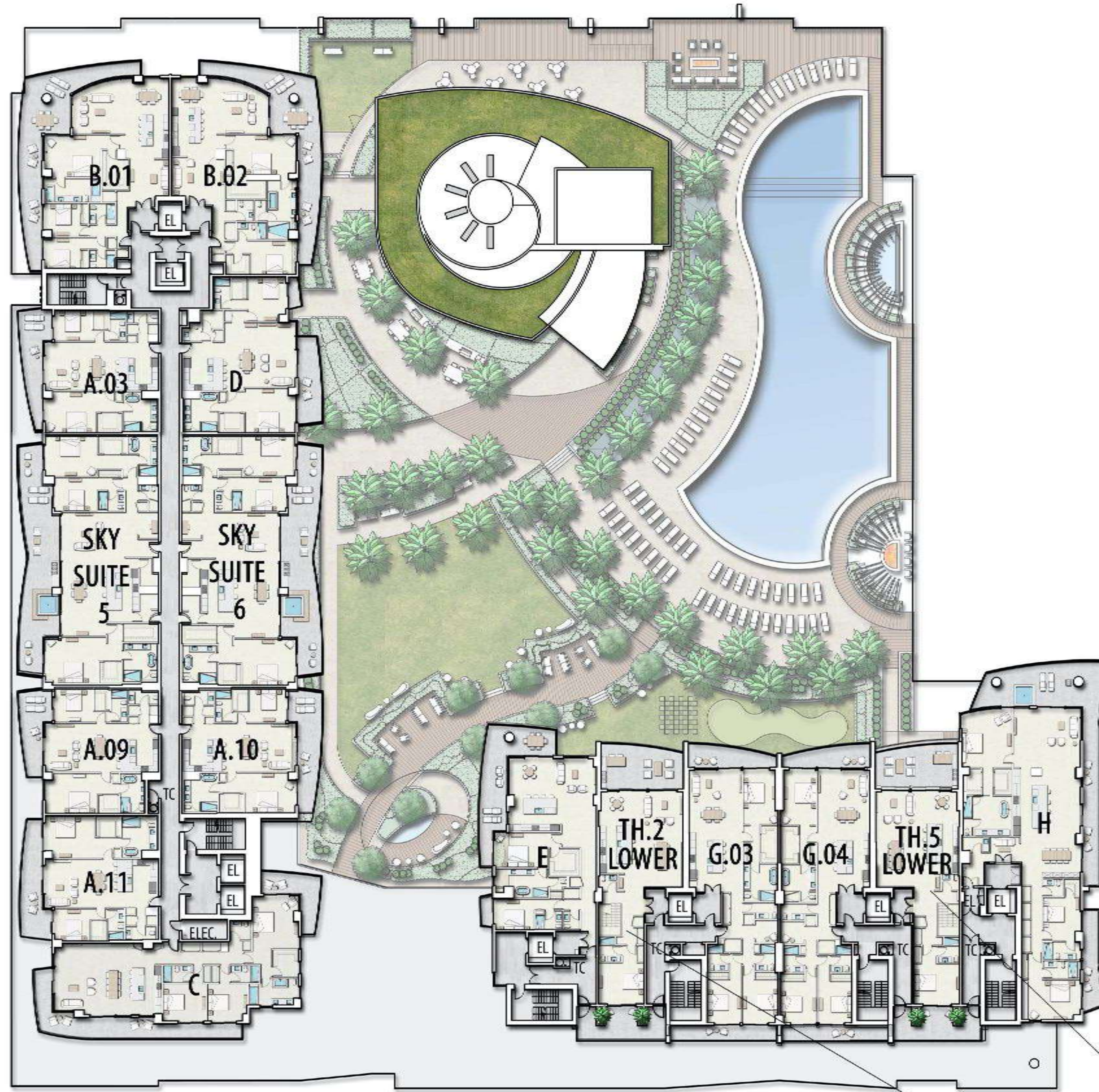
Stated dimensions are measured to the exterior boundaries of the exterior walls and the centerline of interior dividing walls and in fact vary from the dimensions that would be determined by using the description and definition of the "Unit" set forth in the Declaration, which generally only includes the interior airspace between the perimeter walls and excludes interior structural components. Additionally, measurements of rooms set forth on any floor plan are generally taken at the widest points of each given room (as if the room were a perfect rectangle), without regard for any cutouts. Accordingly, the area of the actual room will typically be smaller than the product obtained by multiplying the stated length times width. All dimensions are approximate, and all floor plans and development plans are subject to change.



21 ST FLOOR



CYPRESS DRIVE



FEDERAL HIGHWAY

BAYBERRY DRIVE



LOCATION MAP

LEGEND

- EL ELEVATOR
- MECH MECHANICAL ROOM
- TC TRASH CHUTE

NAUTILUS 220

CONDOMINIUMS | WATERFRONT RESTAURANTS | RETAIL SHOPS | PROFESSIONAL OFFICE

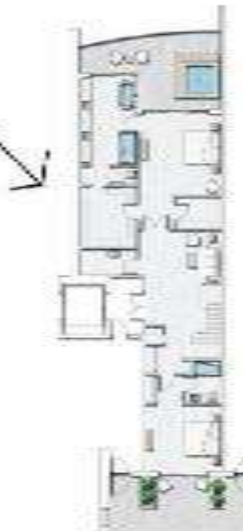
220 LAKESHORE DRIVE | LAKE PARK, FLORIDA 33403 | 561-336-9272 | NAUTILUS220.COM



Stated dimensions are measured to the exterior boundaries of the exterior walls and the centerline of interior dividing walls and in fact vary from the dimensions that would be determined by using the description and definition of the "Unit" set forth in the Declaration, which generally only includes the interior airspace between the perimeter walls and excludes interior structural components. Additionally, measurements of rooms set forth on any floor plan are generally taken at the greatest points of each given room (as if the room were a perfect rectangle), without regard for any cutouts. Accordingly, the area of the actual room will typically be smaller than the product obtained by multiplying the stated length times width. All dimensions are approximate, and all floor plans and development plans are subject to change.

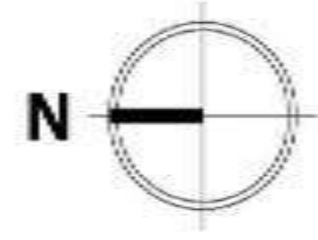


TH.2 UPPER LEVEL



TH.5 UPPER LEVEL

23RD FLOOR



LOCATION MAP

LEGEND

- EL ELEVATOR
- MECH MECHANICAL ROOM
- TC TRASH CHUTE

NAUTILUS 220

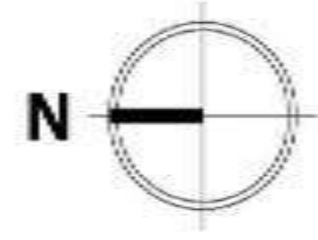
CONDOMINIUMS | WATERFRONT RESTAURANTS | RETAIL SHOPS | PROFESSIONAL OFFICE

220 LAKESHORE DRIVE | LAKE PARK, FLORIDA 33403 | 561-336-9272 | NAUTILUS220.COM

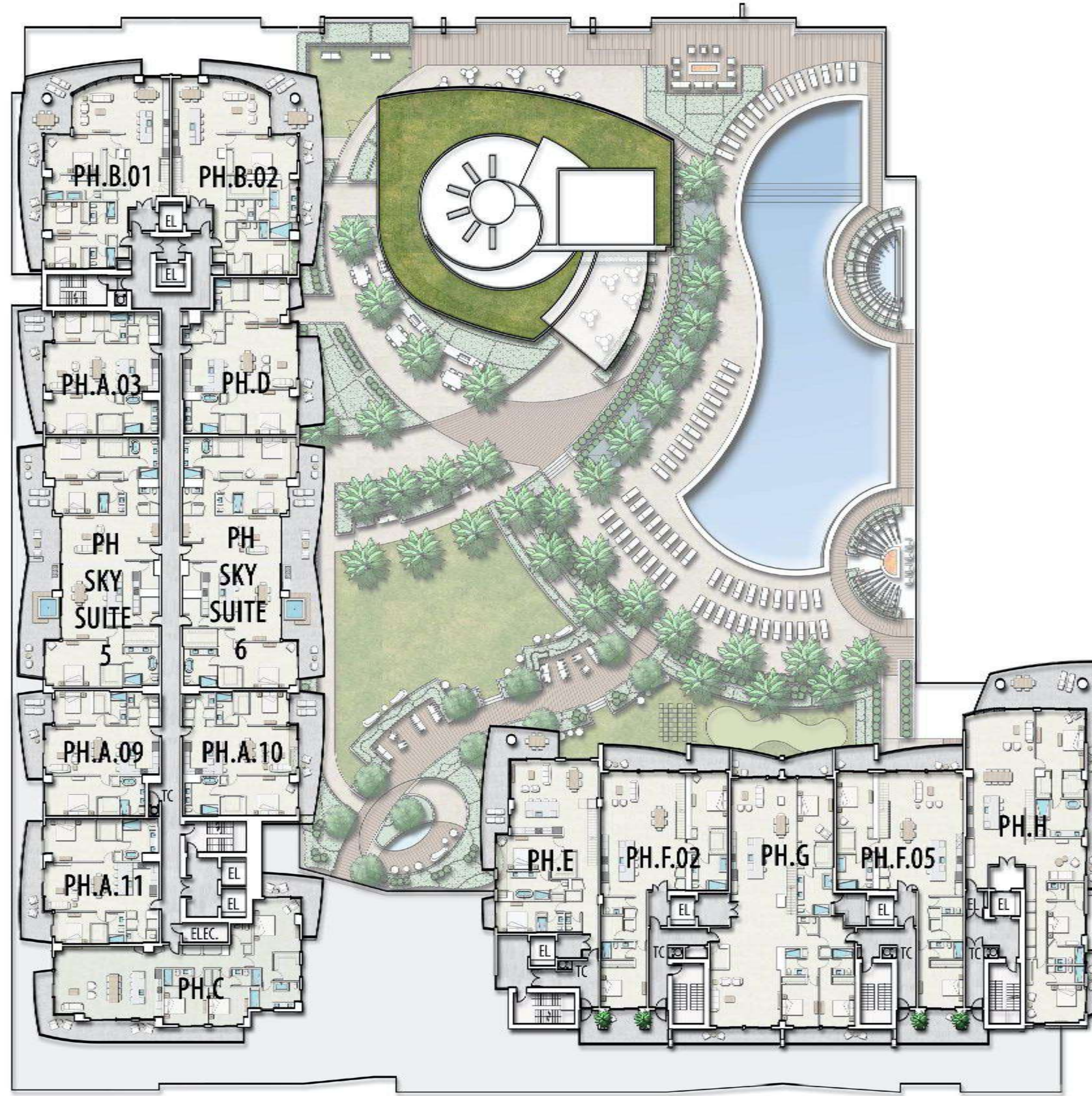


Stated dimensions are measured to the exterior boundaries of the exterior walls and the centerline of interior dividing walls and in fact vary from the dimensions that would be determined by using the description and definition of the "Unit" set forth in the Declaration, which generally only includes the interior airspace between the perimeter walls and excludes interior structural components. Additionally, measurements of rooms set forth on any floor plan are generally taken at the widest points of each given room (as if the room were a perfect rectangle), without regard for any cutouts. Accordingly, the area of the actual room will typically be smaller than the product obtained by multiplying the stated length times width. All dimensions are approximate, and all floor plans and elevations plans are subject to change.

24TH FLOOR



CYPRESS DRIVE



LOCATION MAP

BAYBERRY DRIVE

FEDERAL HIGHWAY

LEGEND

- EL ELEVATOR
- MECH MECHANICAL ROOM
- TC TRASH CHUTE

NAUTILUS 220

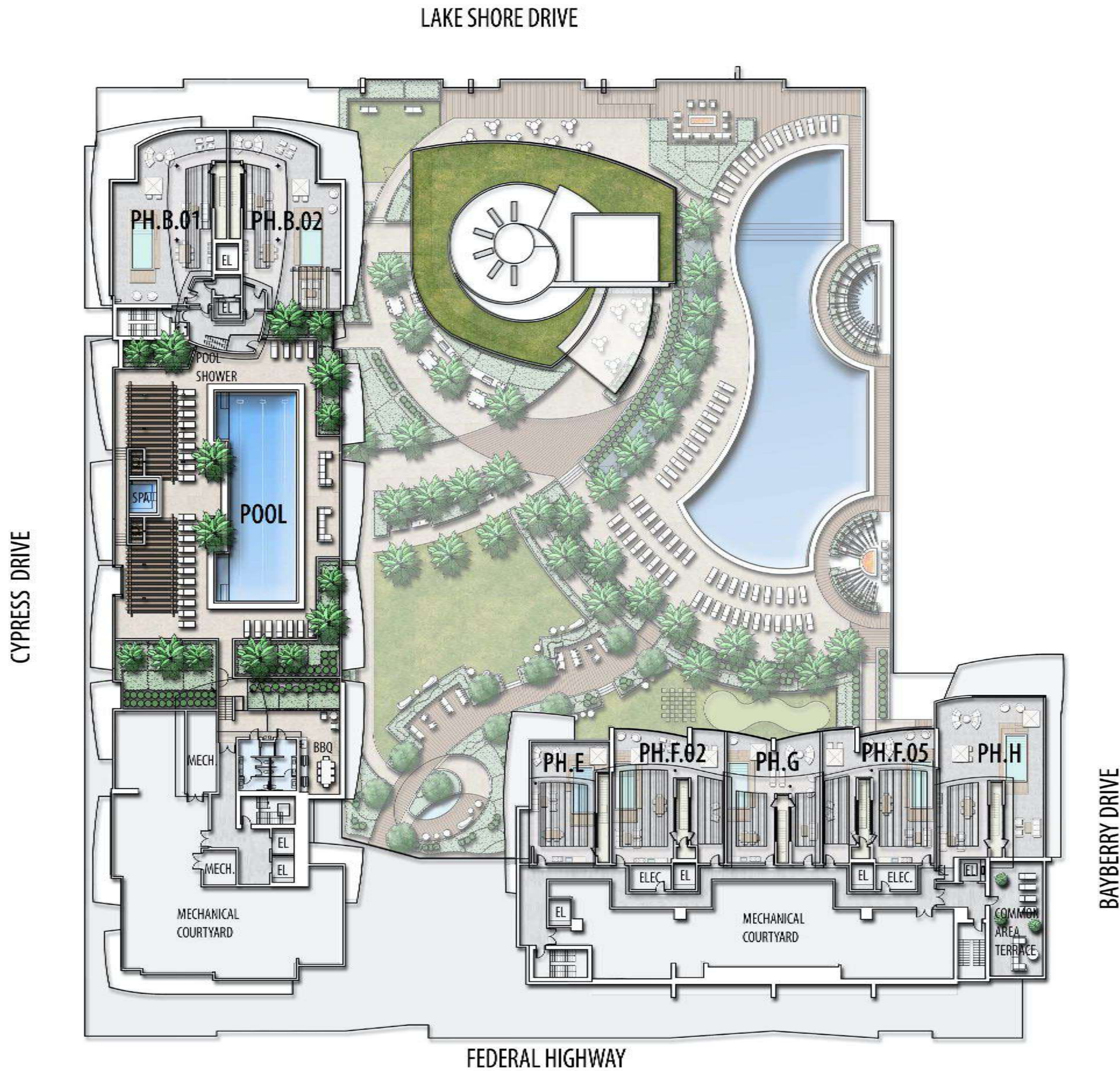
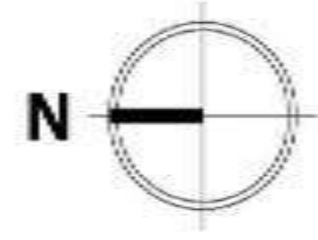
CONDOMINIUMS | WATERFRONT RESTAURANTS | RETAIL SHOPS | PROFESSIONAL OFFICE

220 LAKESHORE DRIVE | LAKE PARK, FLORIDA 33403 | 561-336-9272 | NAUTILUS220.COM



Stated dimensions are measured to the exterior boundaries of the exterior walls and the centerline of interior dividing walls and in fact vary from the dimensions that would be determined by using the description and definition of the "Unit" set forth in the Declaration, which generally only includes the interior airspace between the perimeter walls and excludes interior structural components. Additionally, measurements of rooms set forth on any floor plan are generally taken at the widest points of each given room (as if the room were a perfect rectangle), without regard for any cutouts. Accordingly, the area of the actual room will typically be smaller than the product obtained by multiplying the stated length times width. All dimensions are approximate, and all floor plans and development plans are subject to change.

25TH FLOOR



LOCATION MAP

LEGEND

- EL ELEVATOR
- MECH MECHANICAL ROOM
- TC TRASH CHUTE

NAUTILUS 220

CONDOMINIUMS | WATERFRONT RESTAURANTS | RETAIL SHOPS | PROFESSIONAL OFFICE

220 LAKESHORE DRIVE | LAKE PARK, FLORIDA 33403 | 561-336-9272 | NAUTILUS220.COM



Stated dimensions are measured to the exterior boundaries of the exterior walls and the centerline of interior dividing walls and in fact vary from the dimensions that would be determined by using the description and definition of the "Unit" set forth in the Declaration, which generally only includes the interior airspace between the perimeter walls and excludes interior structural components. Additionally, measurements of rooms set forth on any floor plan are generally taken at the narrowest points of each given room (as if the room were a perfect rectangle), without regard for any cutouts. Accordingly, the area of the actual room will typically be smaller than the product obtained by multiplying the stated length times width. All dimensions are approximate, and all floor plans and development plans are subject to change.