

CASAMAR
900 N OCEAN



0 5 10 20 40



LEVEL : 1

2022.01.20

ALL DESIGNS INDICATED IN THESE DRAWINGS ARE PROPERTY OF ARQUITECTONICA INTERNATIONAL CORP. NO COPIES, TRANSMISSIONS, REPRODUCTIONS OR ELECTRONIC MANIPULATION OF ANY PORTION OF THESE DRAWINGS IN THE WHOLE OR IN PART ARE TO BE MADE WITHOUT THE EXPRESS WRITTEN AUTHORIZATION OF ARQUITECTONICA INTERNATIONAL CORP. DESIGN INTENT SHOWN IS SUBJECT TO REVIEW AND APPROVAL OF ALL APPLICABLE LOCAL AND GOVERNMENTAL AUTHORITIES HAVING JURISDICTION. ALL COPYRIGHTS RESERVED © 2021. THE DATA INCLUDED IN THIS STUDY IS CONCEPTUAL IN NATURE AND WILL CONTINUE TO BE MODIFIED THROUGHOUT THE COURSE OF THE PROJECTS DEVELOPMENT WITH THE EVENTUAL INTEGRATION OF STRUCTURAL, MEP AND LIFE SAFETY SYSTEMS. AS THESE ARE FURTHER REFINED, THE NUMBERS WILL BE ADJUSTED ACCORDINGLY.

ARQUITECTONICA

UNIT 106
3BD
3,000 SF

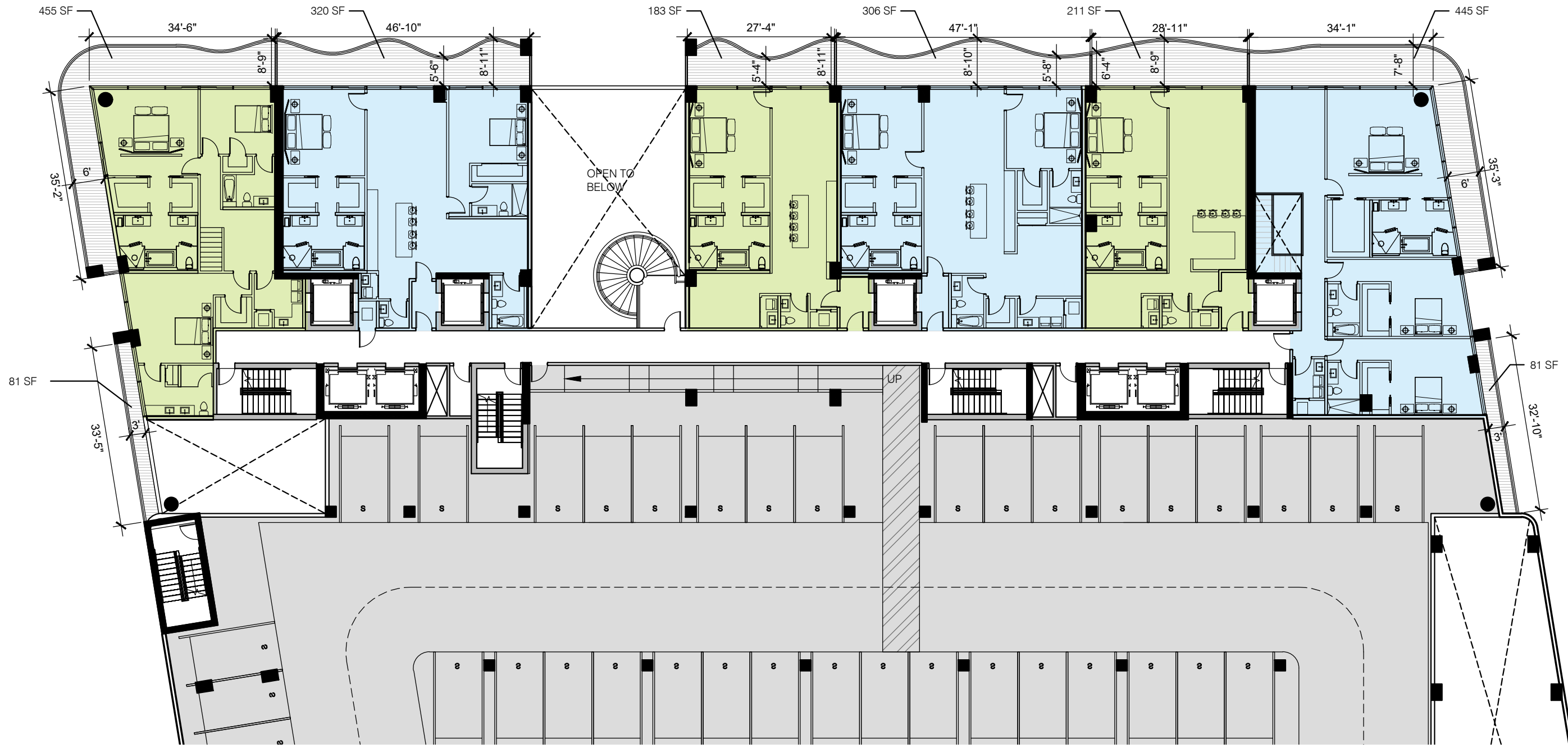
UNIT 205
2BD
1,880 SF

UNIT 204
1BD
1,330 SF

UNIT 203
2BD
1,900 SF

UNIT 202
1BD
1,350 SF

UNIT 101
4BD
3,934 SF



CASAMAR
900 N OCEAN



0 5 10 20 40



GARAGE & UNIT LEVEL : 2

2022.01.20

ALL DESIGNS INDICATED IN THESE DRAWINGS ARE PROPERTY OF ARQUITECTONICA INTERNATIONAL CORP. NO COPIES, TRANSMISSIONS, REPRODUCTIONS OR ELECTRONIC MANIPULATION OF ANY PORTION OF THESE DRAWINGS IN THE WHOLE OR IN PART ARE TO BE MADE WITHOUT THE EXPRESS OF WRITTEN AUTHORIZATION OF ARQUITECTONICA INTERNATIONAL CORP. DESIGN INTENT SHOWN IS SUBJECT TO REVIEW AND APPROVAL OF ALL APPLICABLE LOCAL AND GOVERNMENTAL AUTHORITIES HAVING JURISDICTION. ALL COPYRIGHTS RESERVED © 2021. THE DATA INCLUDED IN THIS STUDY IS CONCEPTUAL IN NATURE AND WILL CONTINUE TO BE MODIFIED THROUGHOUT THE COURSE OF THE PROJECTS DEVELOPMENT WITH THE EVENTUAL INTEGRATION OF STRUCTURAL, MEP AND LIFE SAFETY SYSTEMS. AS THESE ARE FURTHER REFINED, THE NUMBERS WILL BE ADJUSTED ACCORDINGLY.

ARQUITECTONICA

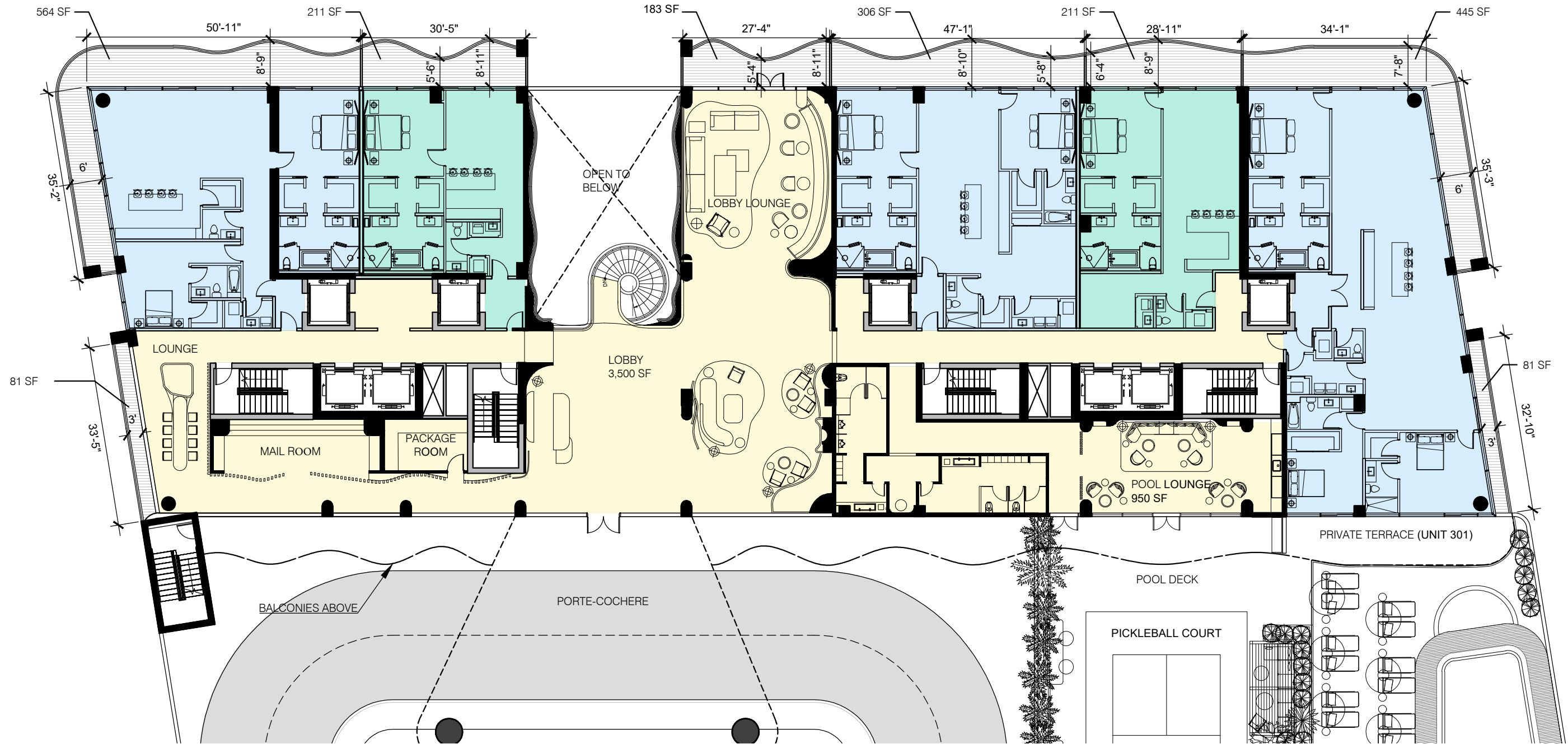
UNIT 306
2BD
2,050 SF

UNIT 305
1BD
1,085 SF

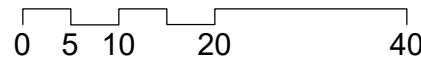
UNIT 303
2BD
1,900 SF

UNIT 302
1BD
1,350 SF

UNIT 301
3BD
2,875 SF



CASAMAR
900 N OCEAN



LOBBY & UNIT LEVEL: 3

2022.01.20

ALL DESIGNS INDICATED IN THESE DRAWINGS ARE PROPERTY OF ARQUITECTONICA INTERNATIONAL CORP. NO COPIES, TRANSMISSIONS, REPRODUCTIONS OR ELECTRONIC MANIPULATION OF ANY PORTION OF THESE DRAWINGS IN THE WHOLE OR IN PART ARE TO BE MADE WITHOUT THE EXPRESS OF WRITTEN AUTHORIZATION OF ARQUITECTONICA INTERNATIONAL CORP. DESIGN INTENT SHOWN IS SUBJECT TO REVIEW AND APPROVAL OF ALL APPLICABLE LOCAL AND GOVERNMENTAL AUTHORITIES HAVING JURISDICTION. ALL COPYRIGHTS RESERVED © 2021. THE DATA INCLUDED IN THIS STUDY IS CONCEPTUAL IN NATURE AND WILL CONTINUE TO BE MODIFIED THROUGHOUT THE COURSE OF THE PROJECTS DEVELOPMENT WITH THE EVENTUAL INTEGRATION OF STRUCTURAL, MEP AND LIFE SAFETY SYSTEMS. AS THESE ARE FURTHER REFINED, THE NUMBERS WILL BE ADJUSTED ACCORDINGLY.

ARQUITECTONICA

06 LINE
3BD
2,590 SF

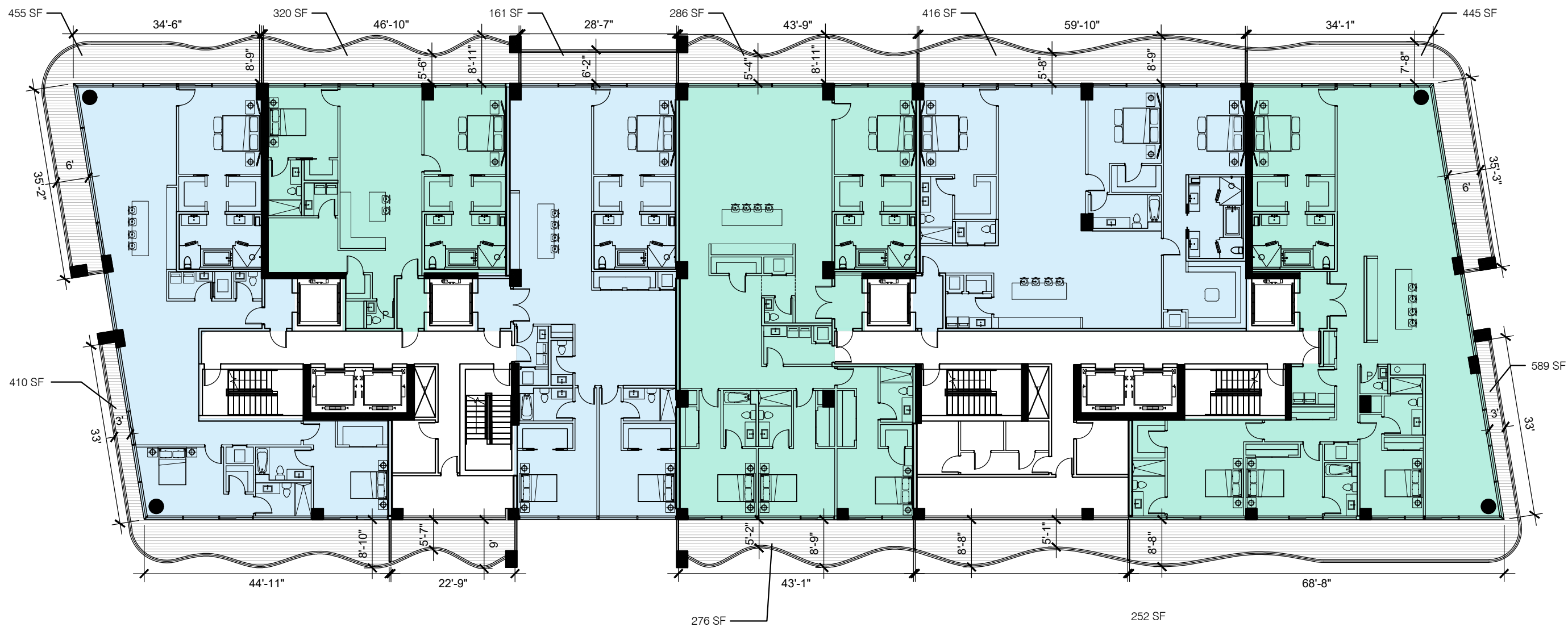
05 LINE
2BD
1,700 SF

04 LINE
3BD
2,500 SF

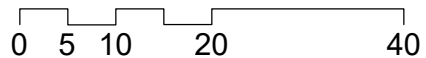
03 LINE
4BD
3,300 SF

02 LINE
3BD
2,760 SF

01 LINE
4BD
3,390 SF



CASAMAR
900 N OCEAN



TYPICAL UNIT LEVELS: 4-20

2022.01.20

ALL DESIGNS INDICATED IN THESE DRAWINGS ARE PROPERTY OF ARQUITECTONICA INTERNATIONAL CORP. NO COPIES, TRANSMISSIONS, REPRODUCTIONS OR ELECTRONIC MANIPULATION OF ANY PORTION OF THESE DRAWINGS IN THE WHOLE OR IN PART ARE TO BE MADE WITHOUT THE EXPRESS OF WRITTEN AUTHORIZATION OF ARQUITECTONICA INTERNATIONAL CORP. DESIGN INTENT SHOWN IS SUBJECT TO REVIEW AND APPROVAL OF ALL APPLICABLE LOCAL AND GOVERNMENTAL AUTHORITIES HAVING JURISDICTION. ALL COPYRIGHTS RESERVED © 2021. THE DATA INCLUDED IN THIS STUDY IS CONCEPTUAL IN NATURE AND WILL CONTINUE TO BE MODIFIED THROUGHOUT THE COURSE OF THE PROJECTS DEVELOPMENT WITH THE EVENTUAL INTEGRATION OF STRUCTURAL, MEP AND LIFE SAFETY SYSTEMS. AS THESE ARE FURTHER REFINED, THE NUMBERS WILL BE ADJUSTED ACCORDINGLY.

ARQUITECTONICA