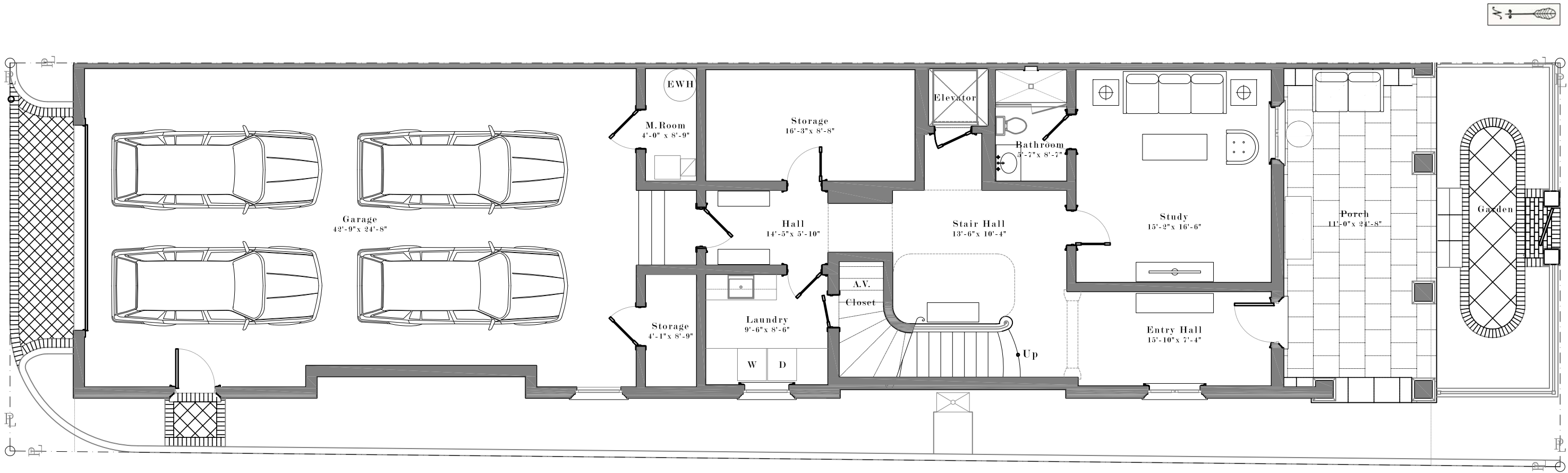


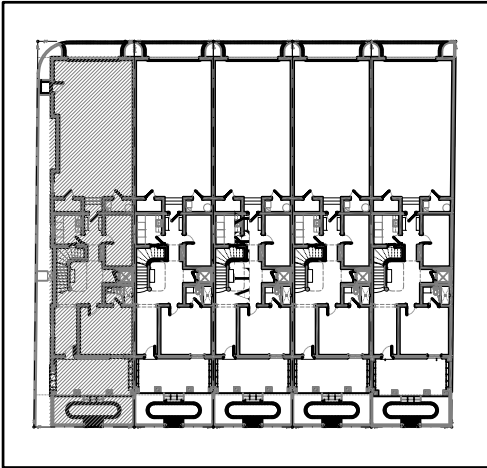
Althea Row



Unit 1-Type A FIRST FLOOR PLAN

SCL: 5/8" = 1'-0"

Unit 1

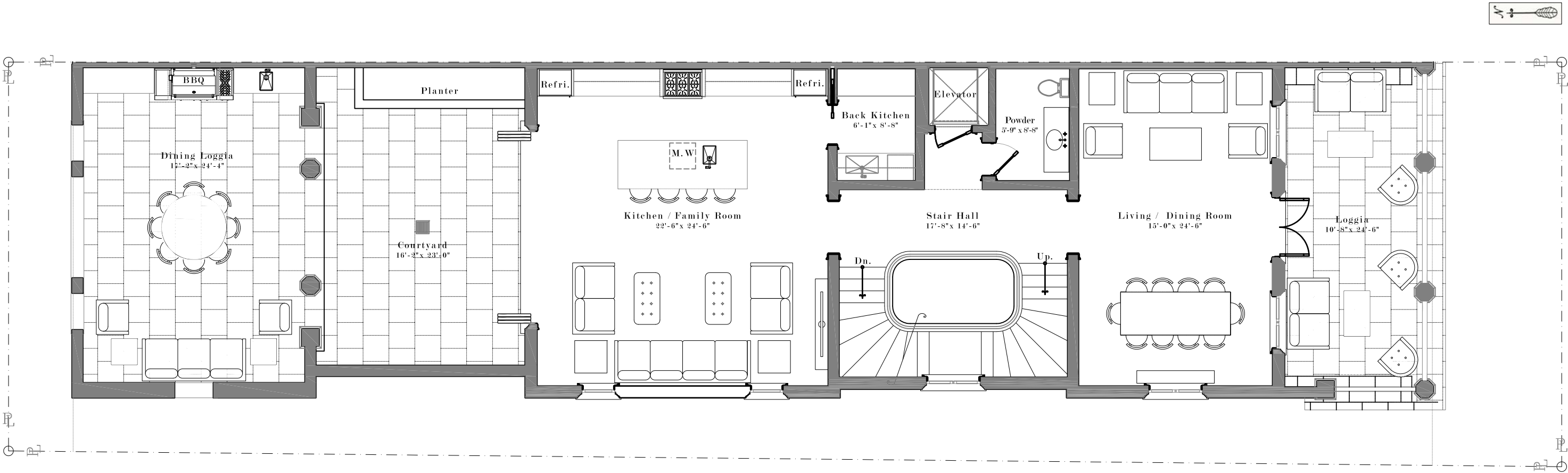


KEY PLAN

AC INTERIOR AREA	4,493
COV. TERRACE	1,088
GARAGE	1,224
OPEN TERRACE	413
TOTAL RESIDENCE	7,218

The drawings, specifications, dimensions and any other information in these floor plans are conceptual and for illustration purposes only and should not be relied upon. References should be made to the plans and specifications at Builder's office for accurate detailed information of the floor plans including calculation of square footage, dimensions, and other information.

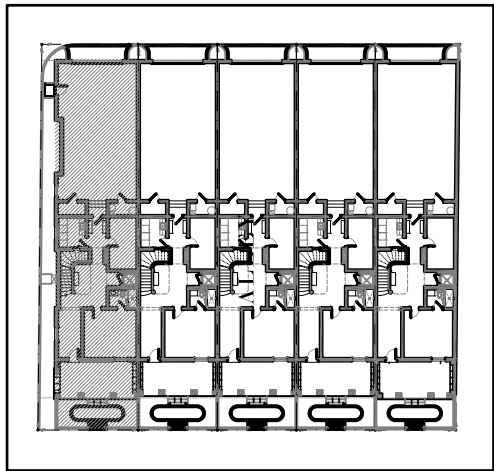
Althea Row



Unit 1-Type A SECOND FLOOR PLAN

SCL: 5/8" = 1'-0"

Unit 1

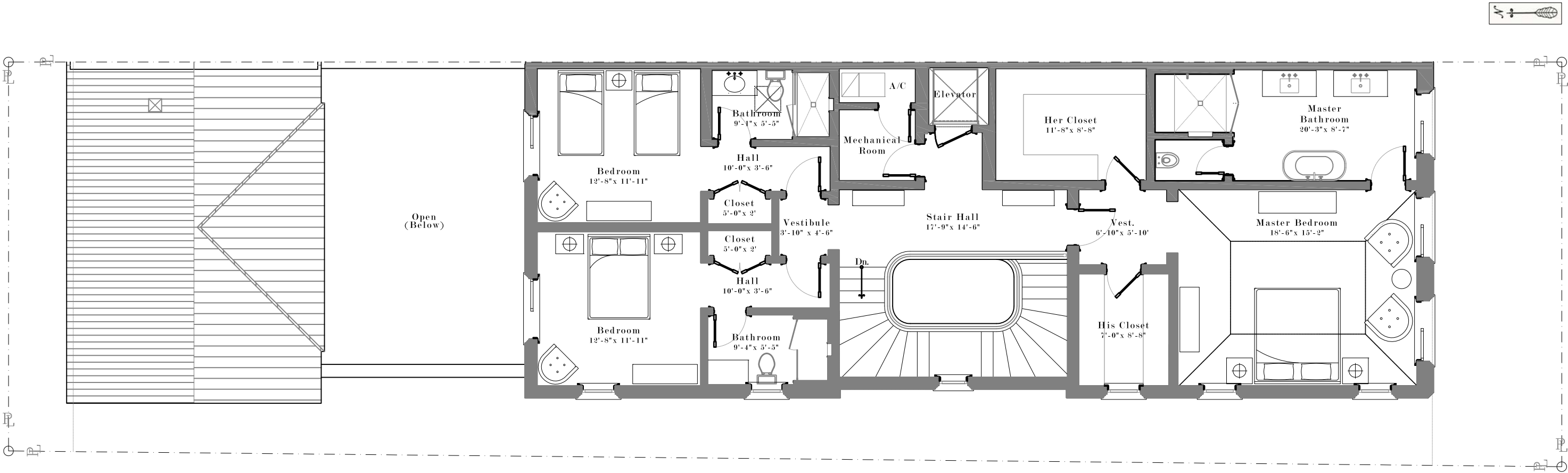


KEY PLAN

AC INTERIOR AREA	4,493
COV. TERRACE	1,088
GARAGE	1,224
OPEN TERRACE	413
TOTAL RESIDENCE	7,218

The drawings, specifications, dimensions and any other information in these floor plans are conceptual and for illustration purposes only and should not be relied upon. References should be made to the plans and specifications at Builder's office for accurate detailed information of the floor plans including calculation of square footage, dimensions, and other information.

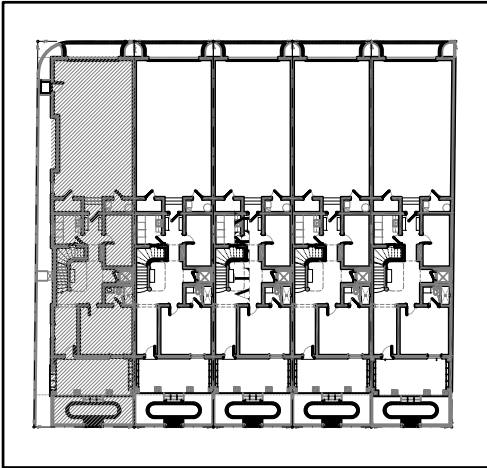
Althea Row



Unit 1-Type A THIRD FLOOR PLAN

SCL: 5/8" = 1'-0"

Unit 1

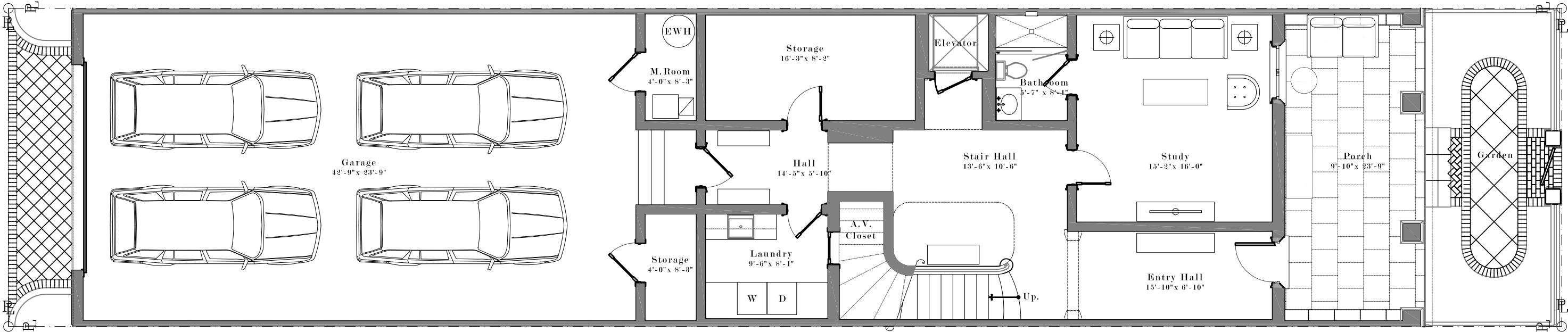


KEY PLAN

AC INTERIOR AREA	4,493
COV. TERRACE	1,088
GARAGE	1,224
OPEN TERRACE	413
TOTAL RESIDENCE	7,218

The drawings, specifications, dimensions and any other information in these floor plans are conceptual and for illustration purposes only and should not be relied upon. References should be made to the plans and specifications at Builder's office for accurate detailed information of the floor plans including calculation of square footage, dimensions, and other information.

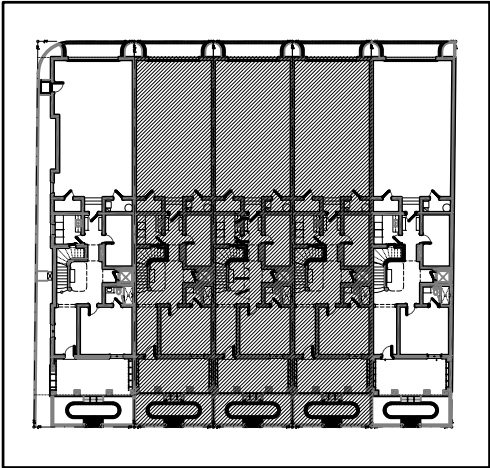
Althea Row



Units 2-4 Type B FIRST FLOOR PLAN

SCL: 5/8" = 1'-0"

Unit 2-4

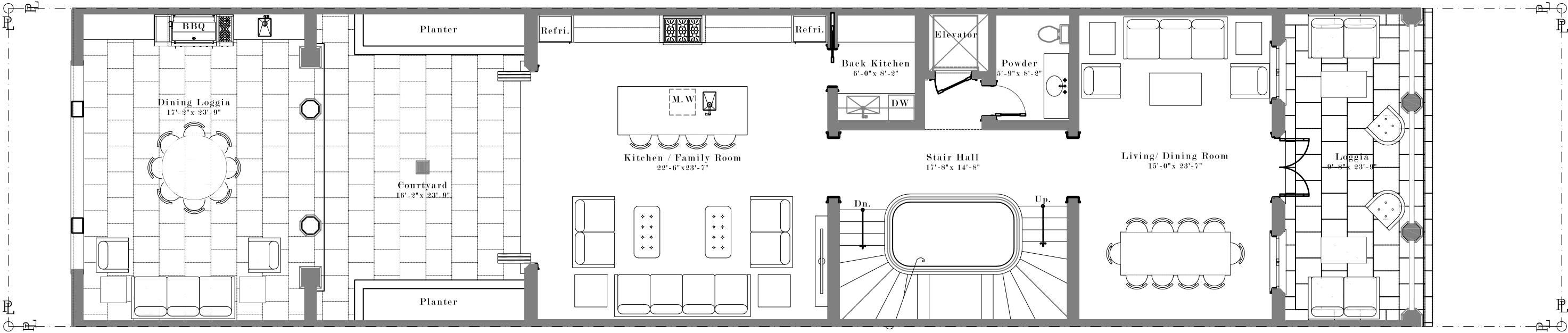


KEY PLAN

AC INTERIOR AREA	4,258
COV. TERRACE	955
GARAGE	1,186
OPEN TERRACE	421
TOTAL RESIDENCE	6,820

The drawings, specifications, dimensions and any other information in these floor plans are conceptual and for illustration purposes only and should not be relied upon. References should be made to the plans and specifications at Builder's office for accurate detailed information of the floor plans including calculation of square footage, dimensions, and other information.

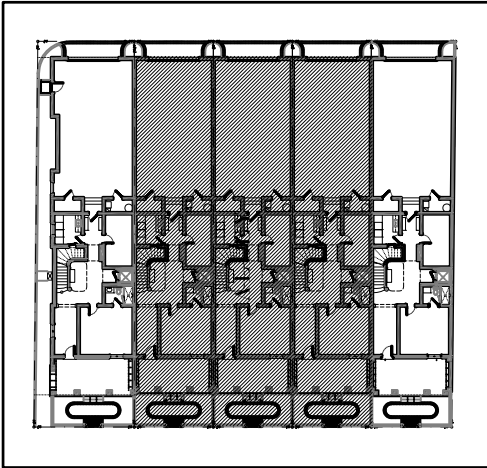
Althea Row



Units 2-4 Type B SECOND FLOOR PLAN

SCL: 5/8" = 1'-0"

Unit 2-4

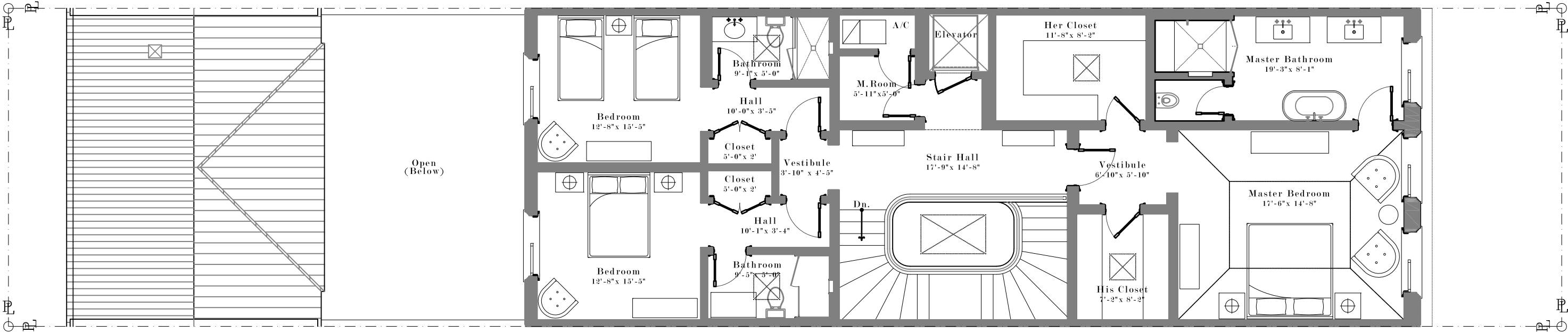


KEY PLAN

AC INTERIOR AREA	4,258
COV. TERRACE	955
GARAGE	1,186
OPEN TERRACE	421
TOTAL RESIDENCE	6,820

The drawings, specifications, dimensions and any other information in these floor plans are conceptual and for illustration purposes only and should not be relied upon. References should be made to the plans and specifications at Builder's office for accurate detailed information of the floor plans including calculation of square footage, dimensions, and other information.

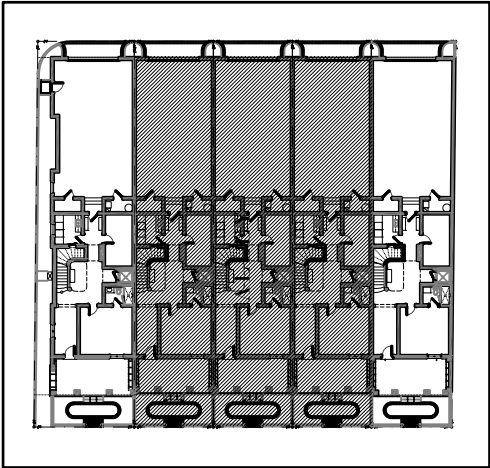
Althea Row



Units 2-4 Type B THIRD FLOOR PLAN

SCL: 5/8" = 1'-0"

Unit 2-4

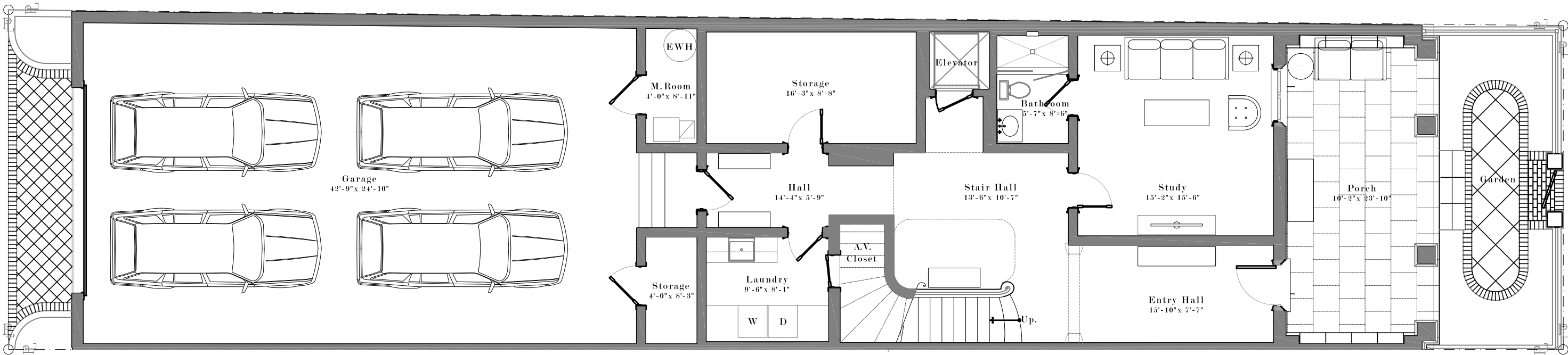


KEY PLAN

AC INTERIOR AREA	4,258
COV. TERRACE	955
GARAGE	1,186
OPEN TERRACE	421
TOTAL RESIDENCE	6,820

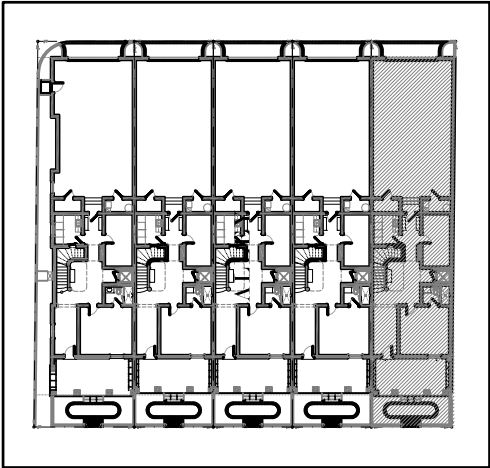
The drawings, specifications, dimensions and any other information in these floor plans are conceptual and for illustration purposes only and should not be relied upon. References should be made to the plans and specifications at Builder's office for accurate detailed information of the floor plans including calculation of square footage, dimensions, and other information.

Althea Row



Unit 5-Type C
FIRST FLOOR PLAN
SCL: 5/8" = 1'-0"

Unit 5

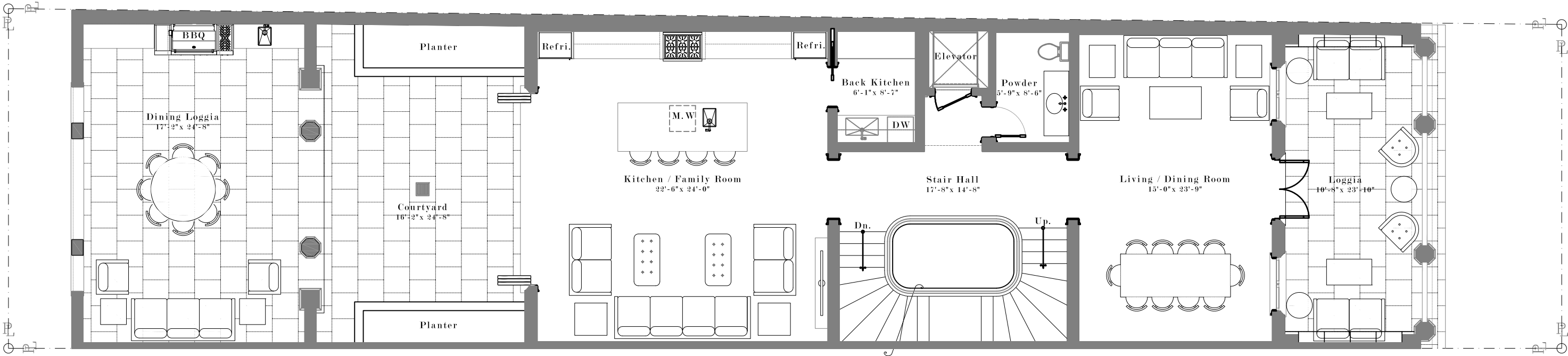


KEY PLAN

AC INTERIOR AREA	4,427
COV. TERRACE	1,065
GARAGE	1,248
OPEN TERRACE	418
TOTAL RESIDENCE	7,158

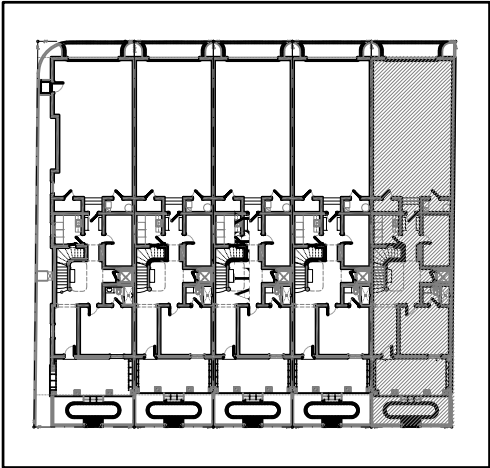
The drawings, specifications, dimensions and any other information in these floor plans are conceptual and for illustration purposes only and should not be relied upon. References should be made to the plans and specifications at Builder's office for accurate detailed information of the floor plans including calculation of square footage, dimensions, and other information.

Althea Row



Unit 5-Type C
SECOND FLOOR PLAN
SCL: 5/8" = 1'-0"

Unit 5

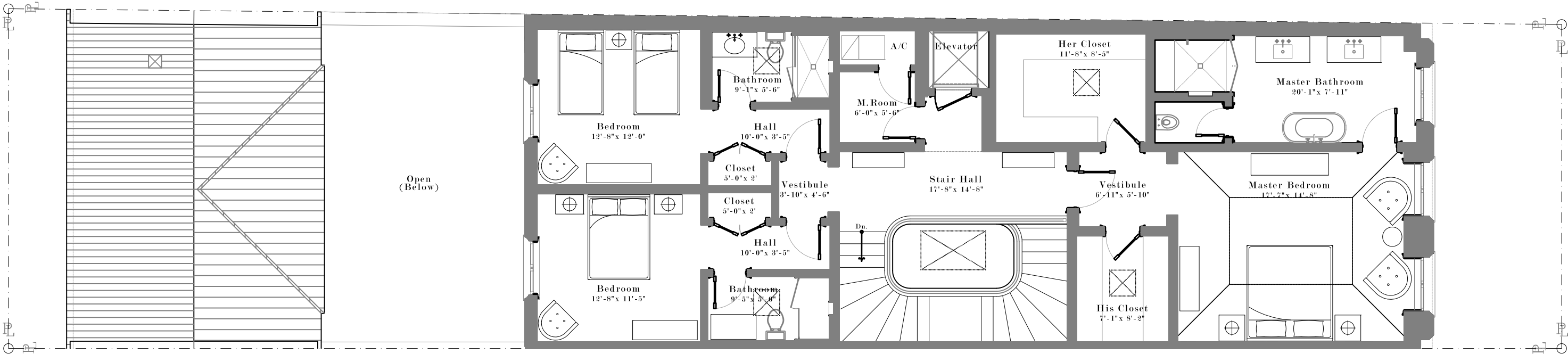


KEY PLAN

AC INTERIOR AREA	4,427
COV. TERRACE	1,065
GARAGE	1,248
OPEN TERRACE	418
TOTAL RESIDENCE	7,158

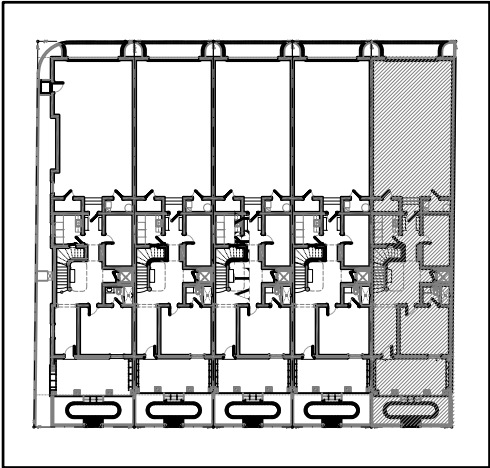
The drawings, specifications, dimensions and any other information in these floor plans are conceptual and for illustration purposes only and should not be relied upon. References should be made to the plans and specifications at Builder's office for accurate detailed information of the floor plans including calculation of square footage, dimensions, and other information.

Althea Row



Unit 5-Type C
THIRD FLOOR PLAN
SCL: 5/8" = 1'-0"

Unit 5

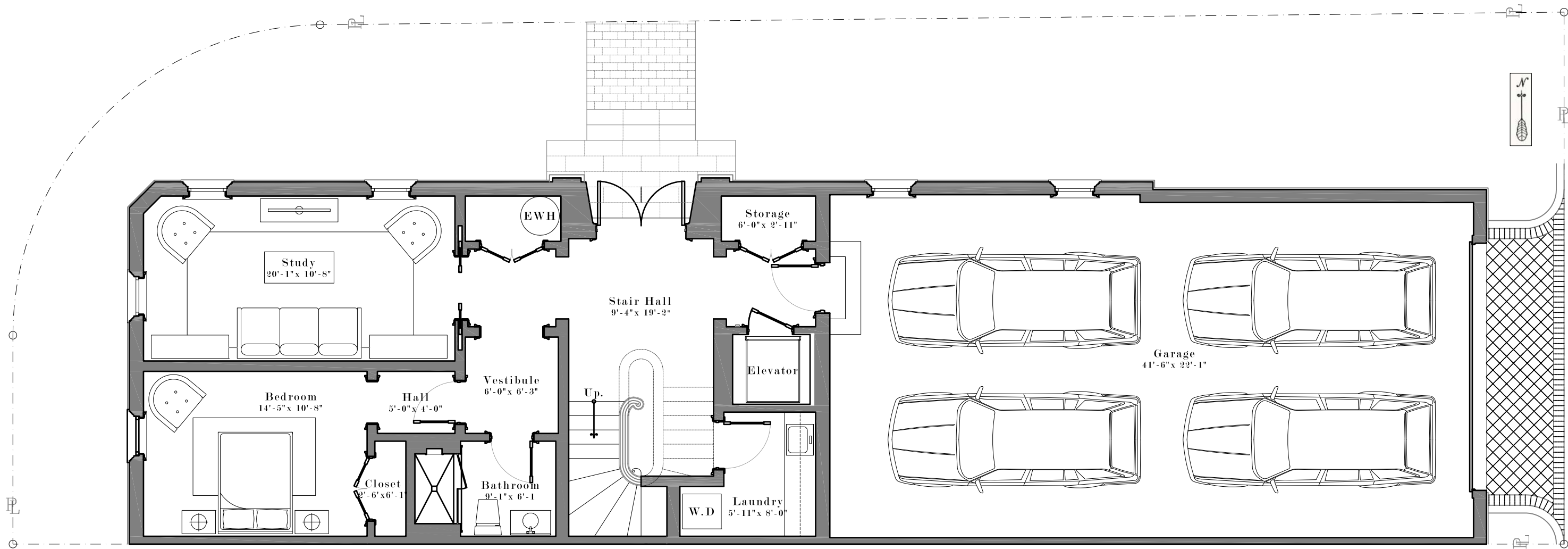


KEY PLAN

AC INTERIOR AREA	4,427
COV. TERRACE	1,065
GARAGE	1,248
OPEN TERRACE	418
TOTAL RESIDENCE	7,158

The drawings, specifications, dimensions and any other information in these floor plans are conceptual and for illustration purposes only and should not be relied upon. References should be made to the plans and specifications at Builder's office for accurate detailed information of the floor plans including calculation of square footage, dimensions, and other information.

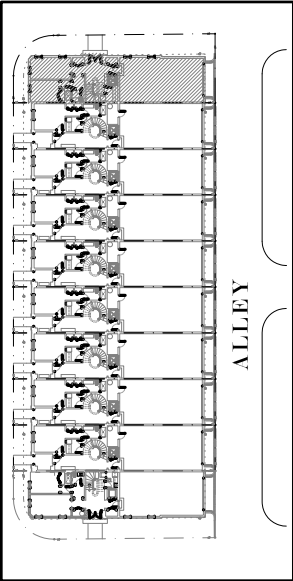
Biltmore Row



Unit 1-Type A FIRST FLOOR PLAN

SCL: 3/4" = 1'-0"

AC INTERIOR AREA	4,294
COV. TERRACE	818
GARAGE	978
OPEN TERRACE	0
TOTAL RESIDENCE	6,090

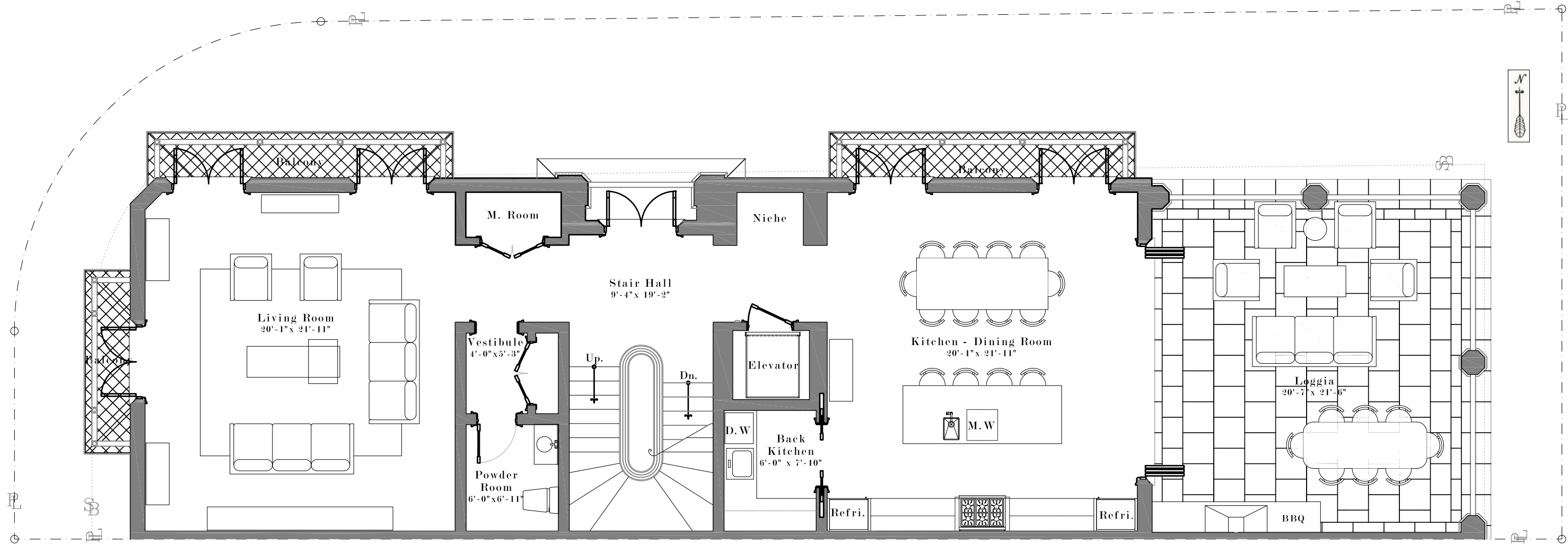


KEY PLAN

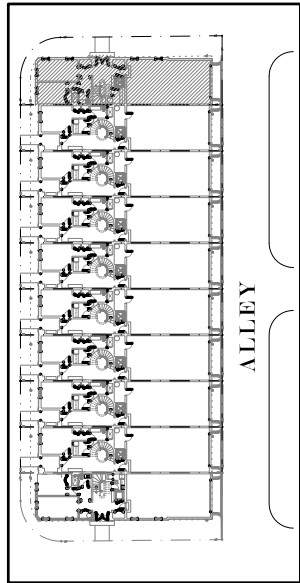
Unit 1

The drawings, specifications, dimensions and any other information in these floor plans are conceptual and for illustration purposes only and should not be relied upon. References should be made to the plans and specifications at Builder's office for accurate detailed information of the floor plans including calculation of square footage, dimensions, and other information.

Biltmore Row



Unit 1-Type A
SECOND FLOOR PLAN
SCL: 3/4" = 1'-0"



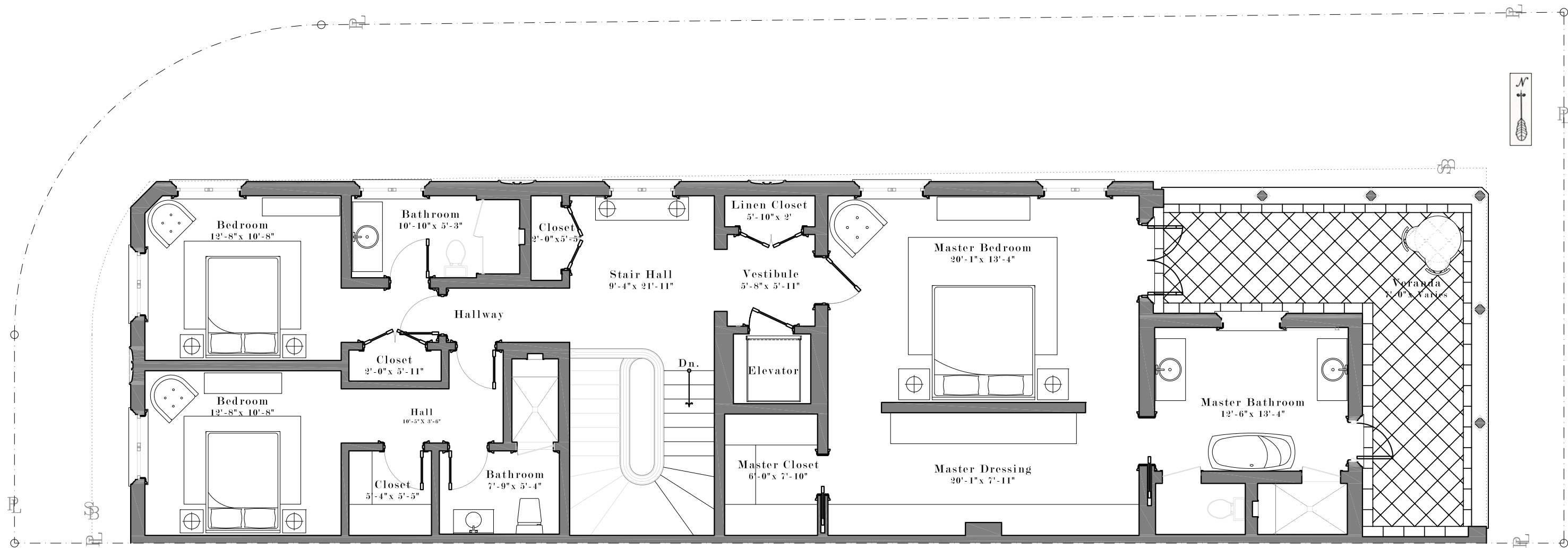
KEY PLAN

Unit 1

AC INTERIOR AREA	4,294
COV. TERRACE	818
GARAGE	978
OPEN TERRACE	0
TOTAL RESIDENCE	6,090

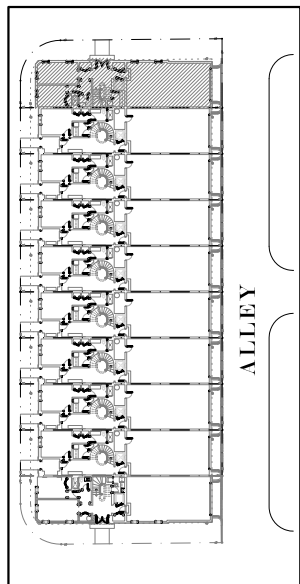
The drawings, specifications, dimensions and any other information in these floor plans are conceptual and for illustration purposes only and should not be relied upon. References should be made to the plans and specifications at Builder's office for accurate detailed information of the floor plans including calculation of square footage, dimensions, and other information.

Biltmore Row



Unit 1-Type A THIRD FLOOR PLAN

SCL: 3/4" = 1'-0"



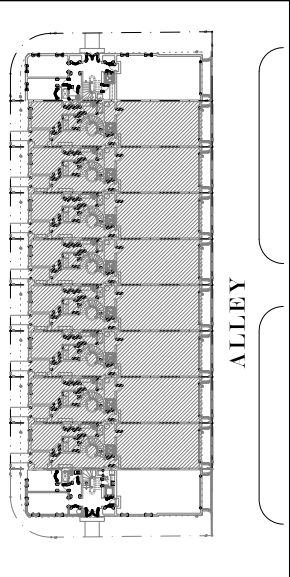
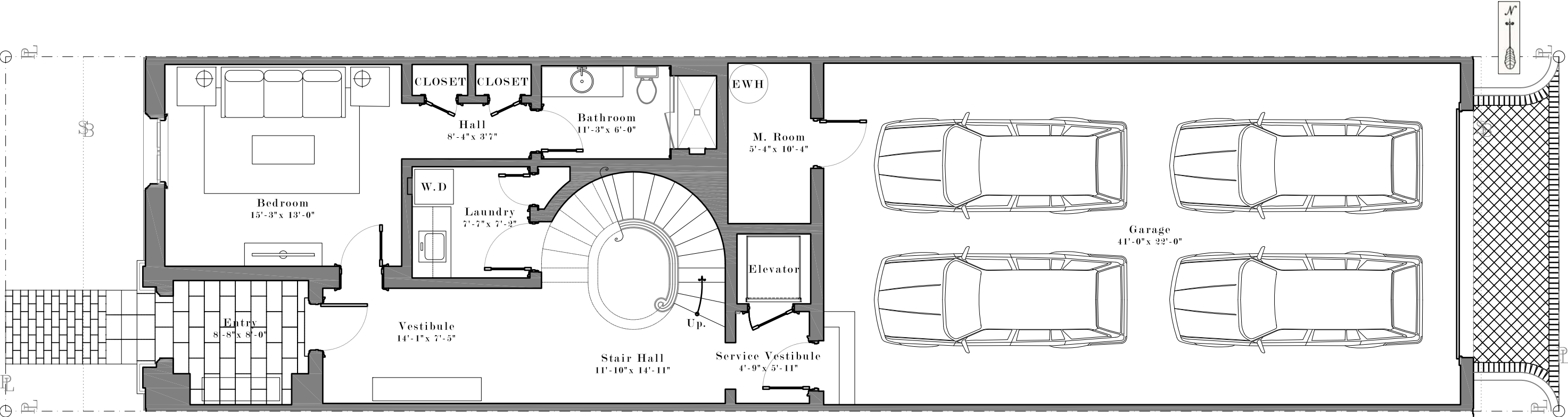
KEY PLAN

Unit 1

AC INTERIOR AREA	4,294
COV. TERRACE	818
GARAGE	978
OPEN TERRACE	0
TOTAL RESIDENCE	6,090

The drawings, specifications, dimensions and any other information in these floor plans are conceptual and for illustration purposes only and should not be relied upon. References should be made to the plans and specifications at Builder's office for accurate detailed information of the floor plans including calculation of square footage, dimensions, and other information.

Biltmore Row

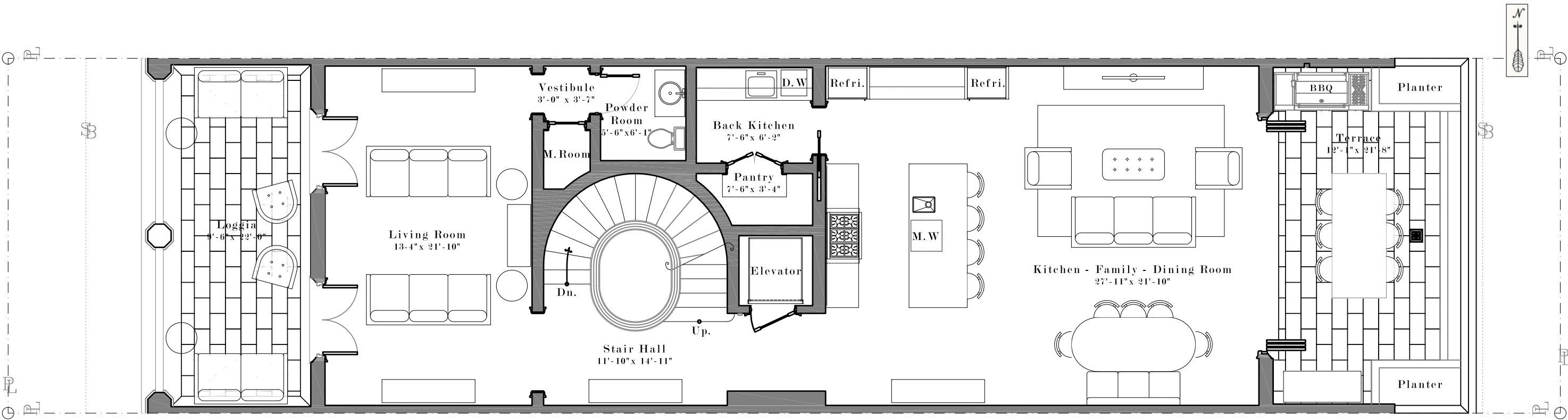


KEY PLAN

AC INTERIOR AREA	3,742
COV. TERRACE	667
GARAGE	1,022
OPEN TERRACE	130
TOTAL RESIDENCE	5,561

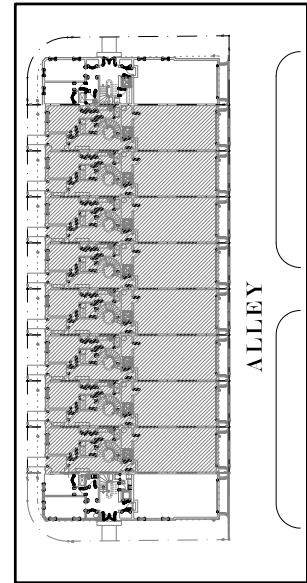
The drawings, specifications, dimensions and any other information in these floor plans are conceptual and for illustration purposes only and should not be relied upon. References should be made to the plans and specifications at Builder's office for accurate detailed information of the floor plans including calculation of square footage, dimensions, and other information.

Biltmore Row



Units 2-9 Type B SECOND FLOOR PLAN

SCL: 3/4" = 1'-0"



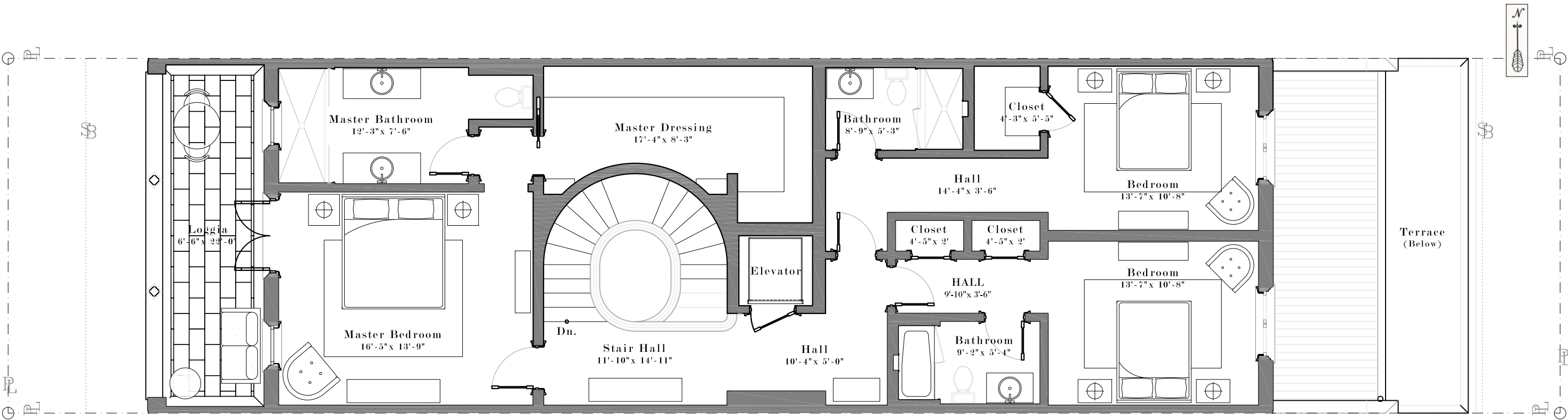
Unit 2
Unit 3
Unit 4
Unit 5
Unit 6
Unit 7
Unit 8
Unit 9

AC INTERIOR AREA	3,742
COV. TERRACE	667
GARAGE	1,022
OPEN TERRACE	130
TOTAL RESIDENCE	5,561

The drawings, specifications, dimensions and any other information in these floor plans are conceptual and for illustration purposes only and should not be relied upon. References should be made to the plans and specifications at Builder's office for accurate detailed information of the floor plans including calculation of square footage, dimensions, and other information.

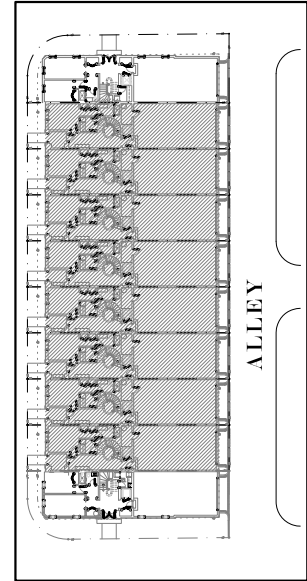
KEY PLAN

Biltmore Row



Units 2-9 Type B THIRD FLOOR PLAN

SCL: 3/4" = 1'-0"



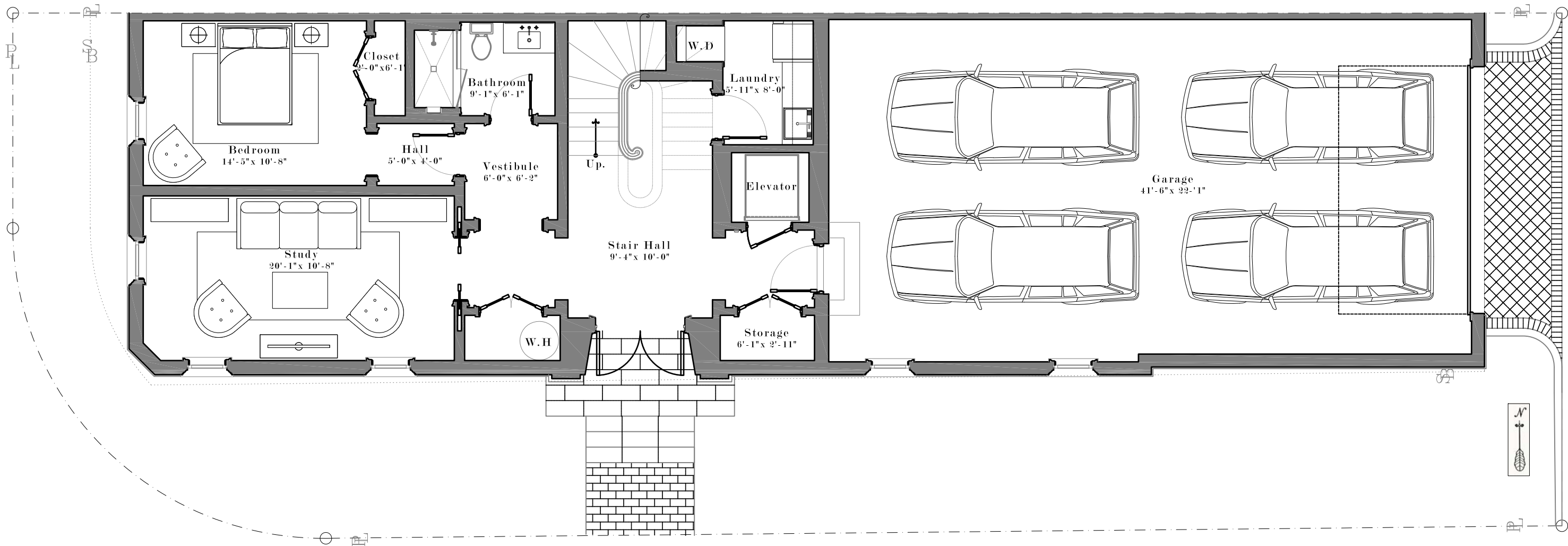
- Unit 2
- Unit 3
- Unit 4
- Unit 5
- Unit 6
- Unit 7
- Unit 8
- Unit 9

AC INTERIOR AREA	3,742
COV. TERRACE	667
GARAGE	1,022
OPEN TERRACE	130
TOTAL RESIDENCE	5,561

The drawings, specifications, dimensions and any other information in these floor plans are conceptual and for illustration purposes only and should not be relied upon. References should be made to the plans and specifications at Builder's office for accurate detailed information of the floor plans including calculation of square footage, dimensions, and other information.

KEY PLAN

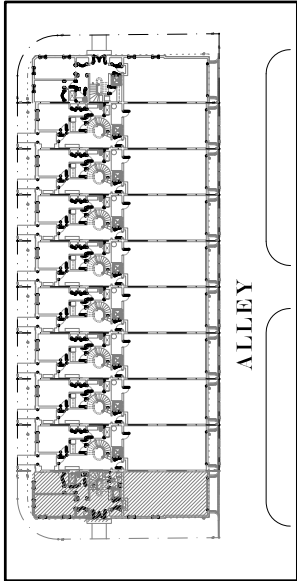
Biltmore Row



Unit 10-Type C FIRST FLOOR PLAN

SCL: 3/4" = 1'-0"

AC INTERIOR AREA	4,294
COV. TERRACE	818
GARAGE	978
OPEN TERRACE	0
TOTAL RESIDENCE	6,090

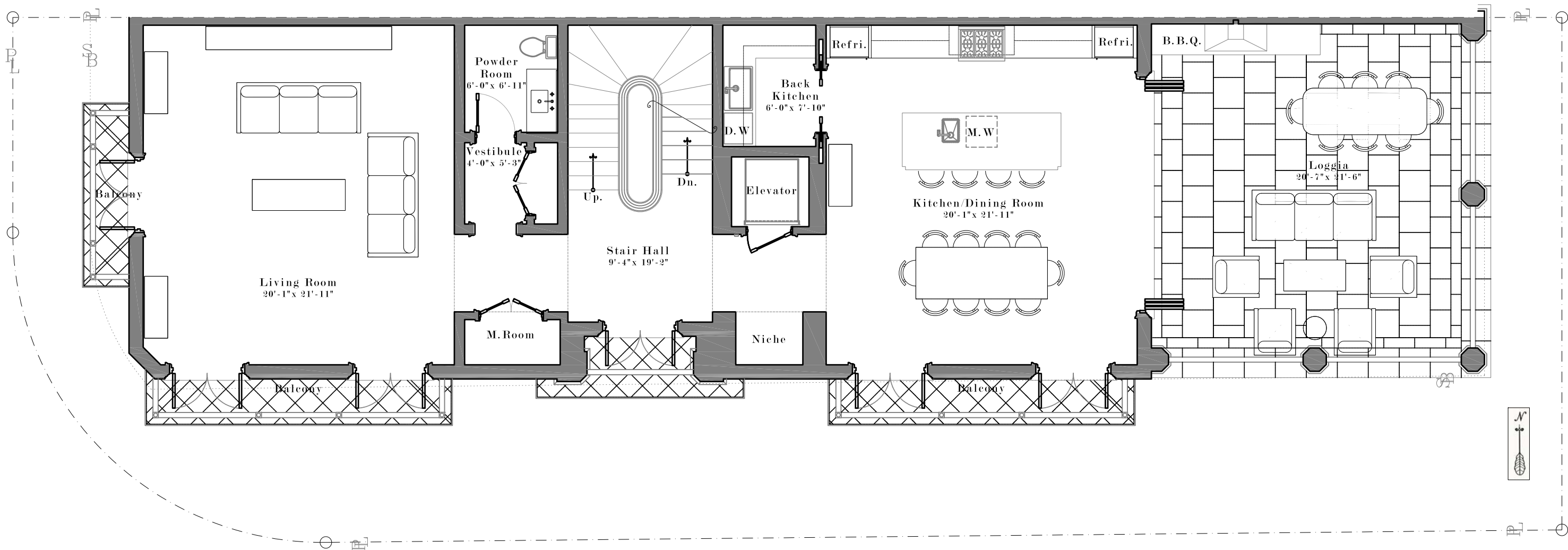


KEY PLAN

Unit 10

The drawings, specifications, dimensions and any other information in these floor plans are conceptual and for illustration purposes only and should not be relied upon. References should be made to the plans and specifications at Builder's office for accurate detailed information of the floor plans including calculation of square footage, dimensions, and other information.

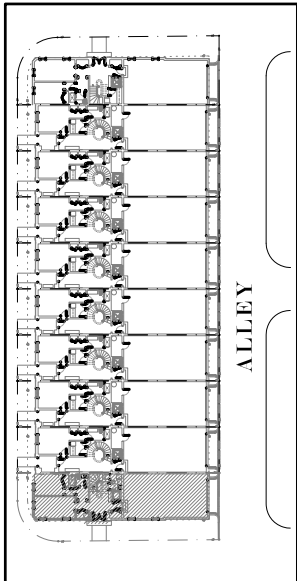
Biltmore Row



Unit 10-Type C SECOND FLOOR PLAN

SCL: 3/4" = 1'-0"

AC INTERIOR AREA	4,294
COV. TERRACE	818
GARAGE	978
OPEN TERRACE	0
TOTAL RESIDENCE	6,090

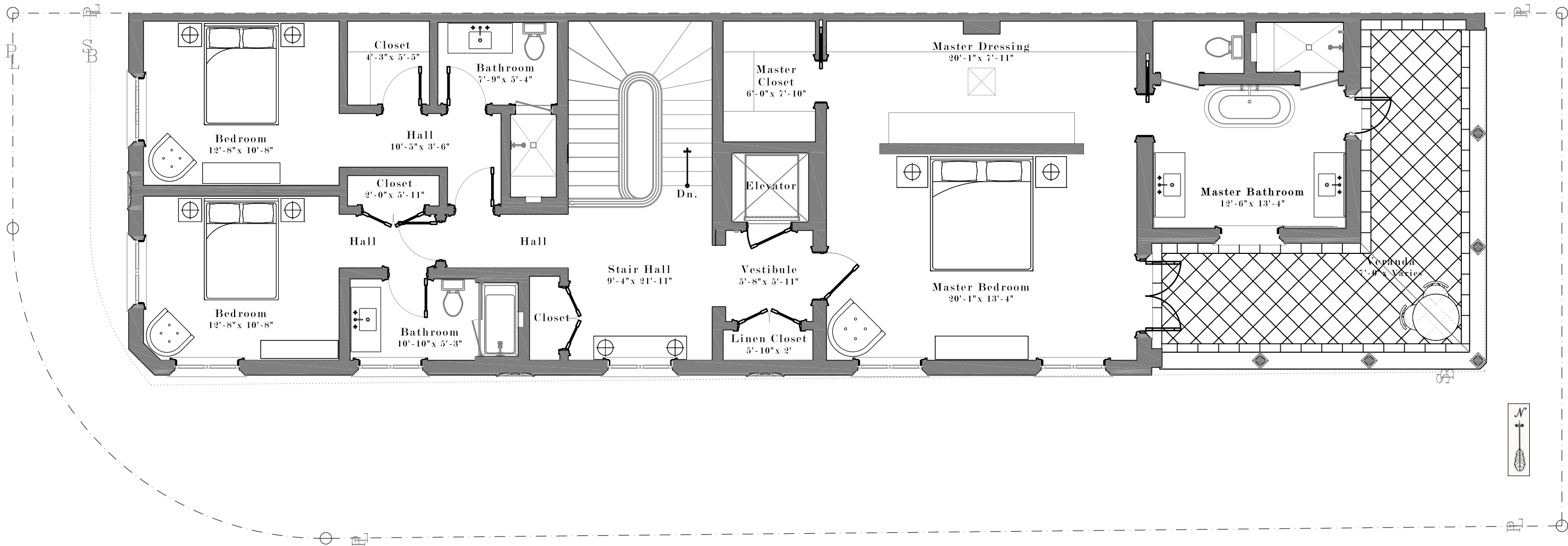


KEY PLAN

Unit 10

The drawings, specifications, dimensions and any other information in these floor plans are conceptual and for illustration purposes only and should not be relied upon. References should be made to the plans and specifications at Builder's office for accurate detailed information of the floor plans including calculation of square footage, dimensions, and other information.

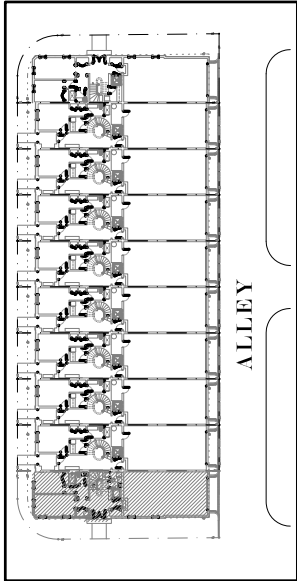
Biltmore Row



Unit 10-Type C THIRD FLOOR PLAN

SCL: 3/4" = 1'-0"

AC INTERIOR AREA	4,294
COV. TERRACE	818
GARAGE	978
OPEN TERRACE	0
TOTAL RESIDENCE	6,090



Unit 10

KEY PLAN

The drawings, specifications, dimensions and any other information in these floor plans are conceptual and for illustration purposes only and should not be relied upon. References should be made to the plans and specifications at Builder's office for accurate detailed information of the floor plans including calculation of square footage, dimensions, and other information.