

# Casa Bella

RESIDENCES

by **B&BITALIA**

The Art of Italian Living Curated by Piero Lissoni



# Casa Bella

RESIDENCES

by **B&BITALIA**

The Art of Italian Living Curated by Piero Lissoni



312 Exclusive Residences  
Private elevators  
56 Stories  
1-4 Bedroom Floor Plans  
Collection of 28 Penthouses

## LOCATION

Located in the heart of the Arts & Cultural District, a thriving international hub of arts, dining, finance, culture, and entertainment.

Within minutes of world-renowned museums, including the Museum of Art and Design, Pérez Art Museum, The Phillip and Patricia Frost Museum of Science, Miami Heat's FTX Arena, and the city's see-and-be-seen districts: Wynwood, Miami's Design District, Downtown Miami, Miami Beach, Brickell, and Coconut Grove. A quick ride from Miami International Airport.





SW 12th Ave

NW 12th Ave

MIAMI INTERNATIONAL AIRPORT

NW 7th Ave

Interstate I-95

● MARDULIES COLLECTION

NW 2nd Ave

N Miami Ave

NE 2nd Ave

Biscayne Blvd

Interstate I-95

NW 2nd Ave

N Miami Ave

NW 2nd Ave

BRICKELL CITY CENTER

MIAMI WORLD CENTER

FTX ARENA

MUSEUM PARK

PEREZ ART MUSEUM

SUPER WACHT

MAISHA

WATCHER ISLAND

BRICKELL KEY

DODDE ISLAND

MACARTHUR CAUSEWAY

PALM ISLAND

BISCAYNE

STAR ISLAND

SUNSET ISLANDS

SOUTH BEACH

KEY BISCAYNE

VIRGINIA KEY

FISHER ISLAND

Biscayne Bay Aquatic Preserve

Biscayne Bay Aquatic Preserve

MacArthur Causeway

MacArthur Causeway

John F. Kennedy Causeway

Casa Bella

RESIDENCES

REBTOWN

The Art of Endorsing (Created by Peter Lisson)

PATRICIA AND PHILIP FROST MUSEUM OF SCIENCE  
ARIST CENTER FOR THE PERFORMING ARTS

DESIGN DISTRICT

● DE LA CRUZ COLLECTION

● DIOR

● HERMES

● CELINE

● PRADA

● MARNI



# Signature Bridge

## Underdeck



Miami World Center

# TEAM

## WORLD CLASS DEVELOPMENT TEAM

### RELATED GROUP

Developer

Established in 1979, Related Group is Florida's leading developer of sophisticated metropolitan living and one of the country's largest real estate conglomerates. The privately held company has built, rehabilitated and managed over 100,000 condominium, rental and commercial units. Related Group has earned international status for its visionary designs and development of extraordinary luxury properties, including One Park Grove, Apogee and Residences by Armani Casa, among others.



### ALTA

Developer



### ARQUITECTONICA

Architect

Extraordinary architectural design by Miami based international firm Arquitectonica, preeminent designer of South Florida's most distinctive high-rises.



# B&B ITALIA

## Brand

Founded in 1966 by Piero Ambrogio Busnelli, B&B Italia has been honored with numerous awards and is a four-time winner of the most coveted award in Italian industrial design: the “Compasso d’Oro.”

From the beginning B&B Italia has availed itself of the collaboration of the most prestigious international designers (Phillipe Stark, Zaha Hadid, Piero Lissoni ) Buildings around the world designed : One Crown Place London, The Retreat at Blue Lagoon Iceland, Bvlgari Hotel & Resort Dubai, Aman Resorts . Exclusive stores as Montblanc, Rolex, Sergio Rossi, Bentley



Sergio Rossi



Bentley



Montblanc







The B&B Italia group, together with its partners in the Design Holding, is one of the largest high end suppliers of furniture and finishes to the Contract market globally.

An extensive range of products and services can be supplied either indirectly by a global dealer network or directly through one of the regional contract hubs or the B&B Italia Contract Division.

It can provide:

- **Over 45 years of experience** in the realization of some of the most iconic developments globally
- **Financial Stability** as a supply partner
- **Continuity of supply** for your project and guaranteed support for your buyerspost purchase

One Thousand Museum, Miami



## LISSONI & PARTNERS

Interior Designer

Led by Piero Lissoni, Lissoni & Partners has a 30-year history of developing international projects in the fields of architecture, landscape, interior, product, and graphic design, in addition to being responsible for the art direction for some of the world's most influential design companies.



## ENZO ENEA

Landscape Architect

Renowned Swiss landscape architect Enzo Enea of Zurich-based Enea Garden, is one of the leading landscape architects in the world. A hallmark of Enzo Enea's work is the fusion of indoor and outdoor spaces, the creative intertwining of the soul of the residence with its surroundings.





## RESIDENTIAL FEATURES

- Residences feature two private elevators opening to private foyers
- Residences delivered fully finished with Italian optional flooring
- Flow-through layouts
- 10-foot ceilings
- Breathtaking views of Biscayne Bay and Miami's downtown skyline
- Piero Lissoni designed Kitchens and Master Baths with Italian cabinetry
- Sub-Zero and Wolf Appliances







## OUTDOOR AMENITIES

12th floor pool deck, featuring Italian-inspired gardens designed by world-renowned landscape architect Enzo Enea, luxury spa, and 78-foot lap pool with incredible views of Biscayne Bay.

- Poolside bar and Mediterranean café
- Private cabanas and shaded lounge areas
- Towel service and sun-care kiosk
- Open-air yoga lawn
- Pickleball court
- Private dining with dedicated space for outdoor grilling
- World-class artwork throughout common areas





## BUILDING AMENITIES

- World-class spa, offering a suite of on-demand services
- Game Room
- Children's Playroom, with educational games and smartboard
- Spacious Party Room overlooking Biscayne Bay
- Cinema
- Wine Room
- Business Center
- Pet Spa
- 360 Wellness Center including: overlooking Biscayne Bay
- Private yoga room
- Spin room
- Beauty salon with mani-pedi stations





## 56TH FLOOR SKY POOL TERRACE OBSERVATORY

Soaring 650 feet high, Casa Bella's private observatory—with a state-of-the-art telescope—features extraordinary panoramic views.



- **RESIDENTIAL SERVICES**

- **24/7 Services**

- Valet parking
- Multilingual team on site
- Security
- Maintenance staff

- **On-Demand Concierge**

- Housekeeping
- Pre-arrival grocery shopping & delivery
- Butler & “While You’re Away” services
- Dry cleaning & laundry
- Nanny and childcare
- Overnight shoeshining
- Pet care services
- Preferred tickets to theater and other events
- Courier services
- Personal IT and tech support
- Translation services

## **The Grand Bay Beach Club**

All residents enjoy complimentary one-year membership privileges at Grand Bay Beach Club in Key Biscayne.



# Views















# Casa Bella

RESIDENCES

by **B&BITALIA**

The Art of Italian Living Curated by Piero Lissoni

# Podium Typical Floor

Floors 2 through 9



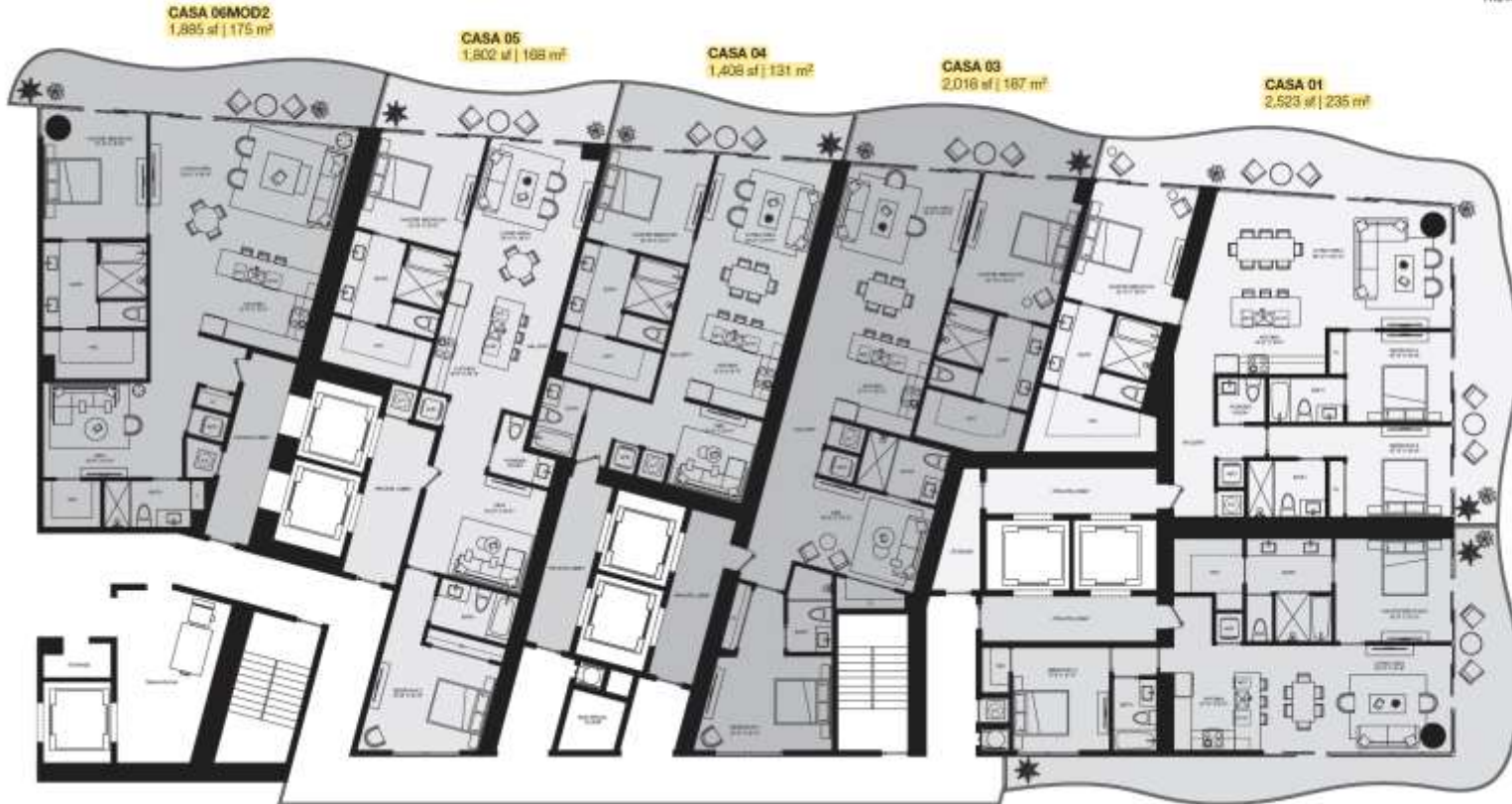
Biscayne Bay

# Casa Bella

RESIDENCES

by **B&B ITALIA**

The Art of Italian Living Curated by Piero Lissoni



Downtown Views



# Tower Typical Floor - Mod

Floors 12 through 22



Biscayne Bay

# Casa Bella

RESIDENCES

by **B&B ITALIA**

The Art of Italian Living Curated by Piero Lissoni

**CASA 06MOD**  
1,775 sf | 165 m<sup>2</sup>

**CASA 05**  
1,802 sf | 168 m<sup>2</sup>

**CASA 04**  
1,408 sf | 131 m<sup>2</sup>

**CASA 03**  
2,018 sf | 187 m<sup>2</sup>

**CASA 01**  
2,523 sf | 235 m<sup>2</sup>

**CASA 07**  
992 sf | 92 m<sup>2</sup>

**CASA 02**  
1,767 sf | 164 m<sup>2</sup>



Downtown Views



# Tower Typical Floor

Floors 23 through 47



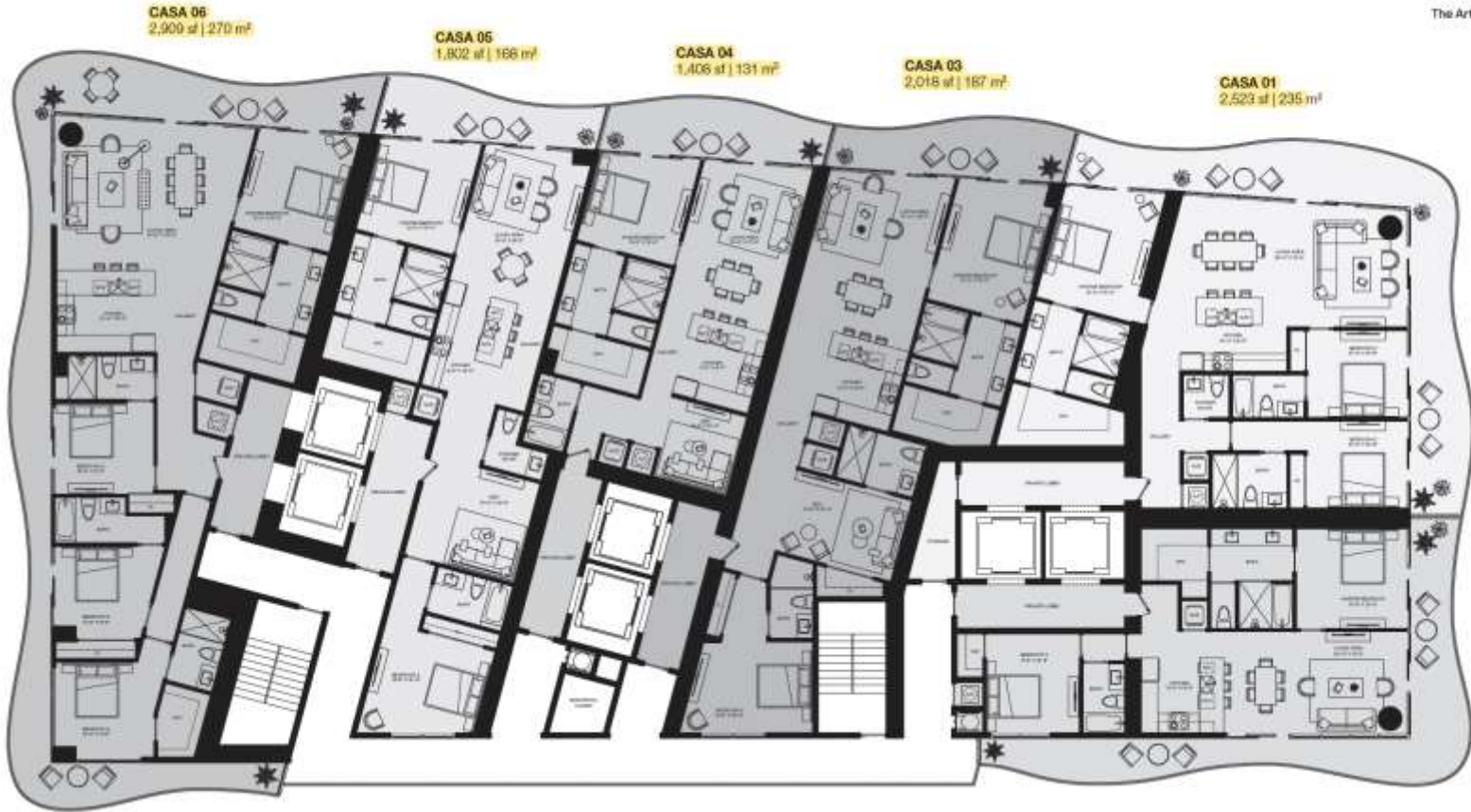
Biscayne Bay

## Casa Bella

RESIDENCES

by **B&B ITALIA**

The Art of Italian Living Curated by Piero Lissoni



**CASA 06**  
2,900 sf | 270 m<sup>2</sup>

**CASA 05**  
1,802 sf | 166 m<sup>2</sup>

**CASA 04**  
1,406 sf | 131 m<sup>2</sup>

**CASA 03**  
2,015 sf | 187 m<sup>2</sup>

**CASA 01**  
2,523 sf | 235 m<sup>2</sup>

**CASA 02**  
1,787 sf | 164 m<sup>2</sup>

Downtown Views



# Casa 01

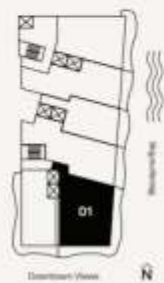
Floors 2 through 46

3 Bedrooms  
3.5 Bathrooms

AC Area  
1,953 sf / 182 m<sup>2</sup>

Outdoor Area  
570 sf / 53 m<sup>2</sup>

Total Area  
2,523 sf / 235 m<sup>2</sup>



# Casa Bella

RESIDENCES

by **B&B ITALIA**

The Art of Italian Living Curated by Piero Lissoni

## Casa 02

Floors 2 through 46

2 Bedrooms  
2 Bathrooms

AC Area  
1,303 sf / 121 m<sup>2</sup>

Outdoor Area  
464 sf / 43 m<sup>2</sup>

Total Area  
1,767 sf / 164 m<sup>2</sup>



# Casa Bella

RESIDENCES

by **B&B ITALIA**

The Art of Italian Living Curated by Piero Lissoni

# Casa 03

Floors 2 through 46

2 Bedrooms  
3 Bathrooms  
Den

AC Area  
1,819 sf / 169 m<sup>2</sup>

Outdoor Area  
199 sf / 18 m<sup>2</sup>

Total Area  
2,018 sf / 187 m<sup>2</sup>

# Casa Bella

RESIDENCES

by **B&B ITALIA**

The Art of Italian Living Curated by Piero Lissoni





# Casa 04

Floors 2 through 46

1 Bedroom  
2 Bathrooms  
Den

AC Area  
1,216 sf / 113 m<sup>2</sup>

Outdoor Area  
392 sf / 36 m<sup>2</sup>

Total Area  
1,408 sf / 131 m<sup>2</sup>

# Casa Bella

RESIDENCES

by **B&B** BOUTIQUE

The Art of Italian Living Curated by Piero Lissoni



# Casa 05

Floors 2 through 46

2 Bedrooms  
2.5 Bathrooms  
Den

AC Area  
1613 sf / 150 m<sup>2</sup>

Outdoor Area  
189 sf / 18 m<sup>2</sup>

Total Area  
1802 sf / 168 m<sup>2</sup>

# Casa Bella

RESIDENCES

by **B&B** ITALY

The Art of Italian Living Curated by Piero Lissoni



# Casa 06

Floors 23 through 47

4 Bedrooms  
4 Bathrooms  
Den

AC Area  
2,187 sf / 203 m<sup>2</sup>

Outdoor Area  
722 sf / 67 m<sup>2</sup>

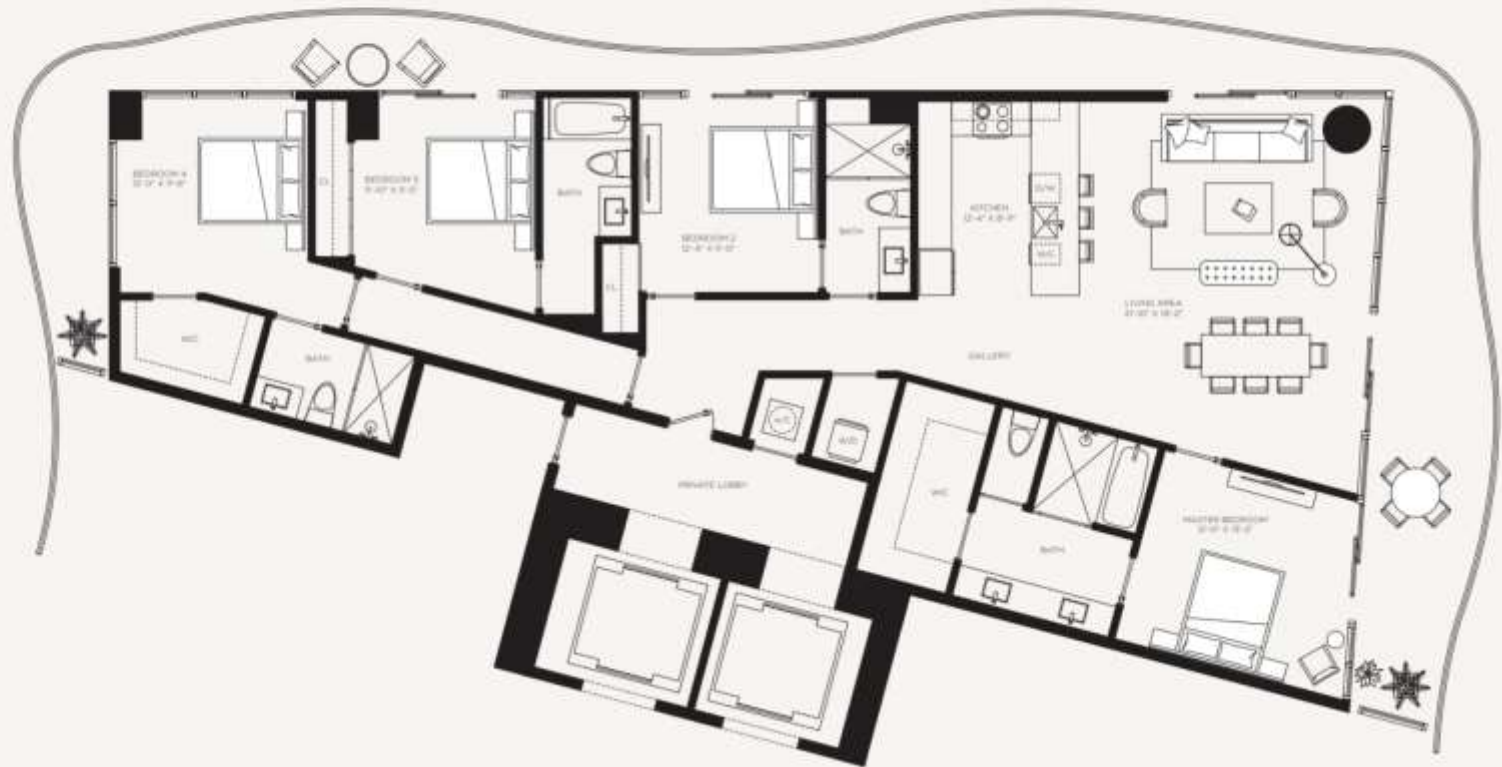
Total Area  
2,909 sf / 270 m<sup>2</sup>

# Casa Bella

RESIDENCES

by **B&B ITALIA**

The Art of Italian Living Curated by Piero Lissoni



# Casa 06MOD

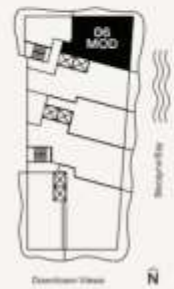
Floors 12 through 22

2 Bedrooms  
2 Bathrooms

AC Area  
1,326 sf / 123 m<sup>2</sup>

Outdoor Area  
449 sf / 42 m<sup>2</sup>

Total Area  
1,775 sf / 165 m<sup>2</sup>



# Casa Bella

RESIDENCES

by **B&B ITALIA**

The Art of Italian Living Curated by Piero Lissoni

# Casa 06MOD2

Floors 2 through 9

1 Bedroom  
2 Bathrooms  
Den

AC Area  
1595 sf / 148 m<sup>2</sup>

Outdoor Area  
290 sf / 27 m<sup>2</sup>

Total Area  
1885 sf / 175 m<sup>2</sup>

# Casa Bella

RESIDENCES

by **B&B ITALIA**

The Art of Italian Living Curated by Piero Lissoni



# Casa 07

Floors 12 through 22

1 Bedroom  
1 Bathroom

AC Area  
711 sf / 66 m<sup>2</sup>

Outdoor Area  
281 sf / 26 m<sup>2</sup>

Total Area  
992 sf / 92 m<sup>2</sup>

