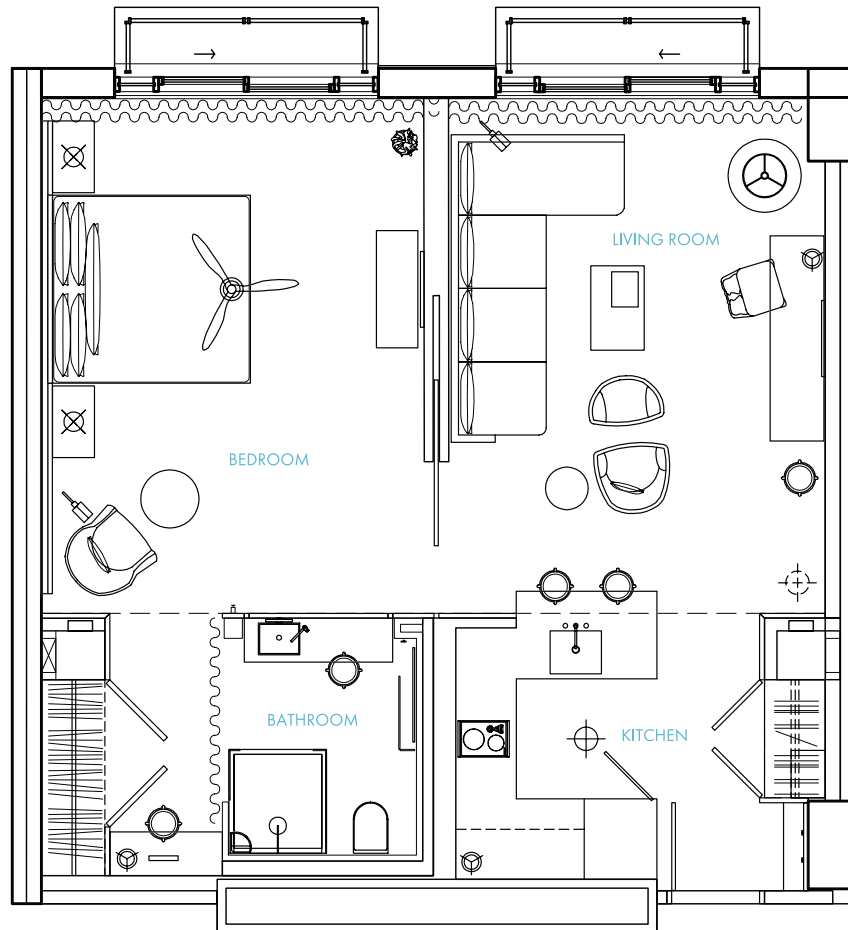




SLS BAHAMAR

One-Bedroom Residence

INTERIOR 645-657 SQ FT | EXTERIOR 46-125 SQ FT
TOTAL 691-782 SQ FT



BAHA MAR[™]
RESIDENCES

NASSAU, THE BAHAMAS

RESIDENCES@BAHAMAR.COM

Unit Floor Plans are dimensioned but not to scale. Square footage is approximate and constitutes an estimate only. Square footage can vary and is subject to differing measuring techniques. Units are being sold based upon the Unit and its location without any guaranty of actual square footage. Furnishings and their layout may not be representative of actual Unit furnishings. This is not an offering in any jurisdiction where prohibited by law and materials will not be forwarded into such jurisdictions unless the Developer has complied with the requirements of such jurisdiction. CTF BM Operations, Ltd. uses the Rosewood[™] and the SLS[™] brand names and certain trademarks (collectively, the "Trademarks") in connection with the sales and marketing of the Residential Units in Baha Mar under limited, non-exclusive, non-transferable and non-sublicensable licenses. The foregoing licenses may be terminated or may expire without renewal, in which the Residential Units and any part of Baha Mar will be branded, identified or affiliated with any of the Trademarks or have any rights to use the Trademarks. Rosewood Hotels and Resorts, LLC ("Rosewood"), SBE Hotel Management, LLC ("SBE" or "SLS") or any of their affiliates (collectively, the "Brands") do not have any responsibility for the development, offering, marketing, sale or solicitation of the Residential Units at Baha Mar, the contents of any governing documents and any offering and sales documents (including, without limitation, the budgets therein), or the sales and marketing process (including, without limitation, any sales or marketing materials and any statements or representations by Developer, brokers or sales persons).

Copyright © 2019 – CTF BM Operations, Ltd. – All Rights Reserved.

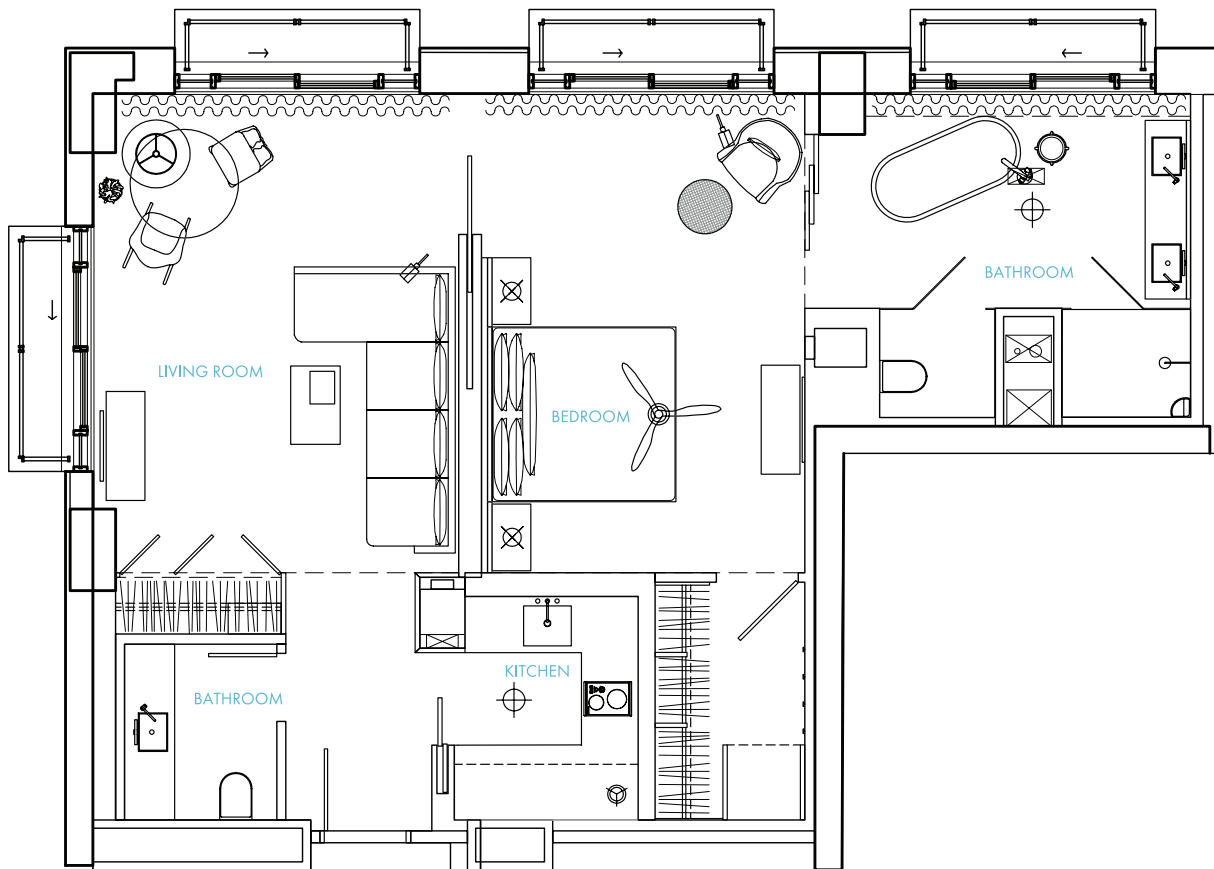




SLS BAHAMAR

One-Bedroom Large Residence

INTERIOR 759 SQ FT | EXTERIOR 80-190 SQ FT
TOTAL 875-985 SQ FT



BAHA MAR
RESIDENCES

NASSAU, THE BAHAMAS

RESIDENCES@BAHAMAR.COM

Unit Floor Plans are dimensioned but not to scale. Square footage is approximate and constitutes an estimate only. Square footage can vary and is subject to differing measuring techniques. Units are being sold based upon the Unit and its location without any guaranty of actual square footage. Furnishings and their layout may not be representative of actual Unit furnishings. This is not an offering in any jurisdiction where prohibited by law and materials will not be forwarded into such jurisdictions unless the Developer has complied with the requirements of such jurisdiction. CTF BM Operations, Ltd. uses the Rosewood™ and the SLS™ brand names and certain trademarks (collectively, the "Trademarks") in connection with the sales and marketing of the Residential Units in Baha Mar under limited, non-exclusive, non-transferable and non-sublicensable licenses. The foregoing licenses may be terminated or may expire without renewal, in which the Residential Units and any part of Baha Mar will be branded, identified or affiliated with any of the Trademarks or have any rights to use the Trademarks. Rosewood Hotels and Resorts, LLC ("Rosewood"), SBE Hotel Management, LLC ("SBE" or "SLS") or any of their affiliates (collectively, the "Brands") do not have any responsibility for the development, offering, marketing, sale or solicitation of the Residential Units at Baha Mar, the contents of any governing documents and any offering and sales documents (including, without limitation, the budgets therein), or the sales and marketing process (including, without limitation, any sales or marketing materials and any statements or representations by Developer, brokers or sales persons).

Copyright © 2019 – CTF BM Operations, Ltd. – All Rights Reserved.

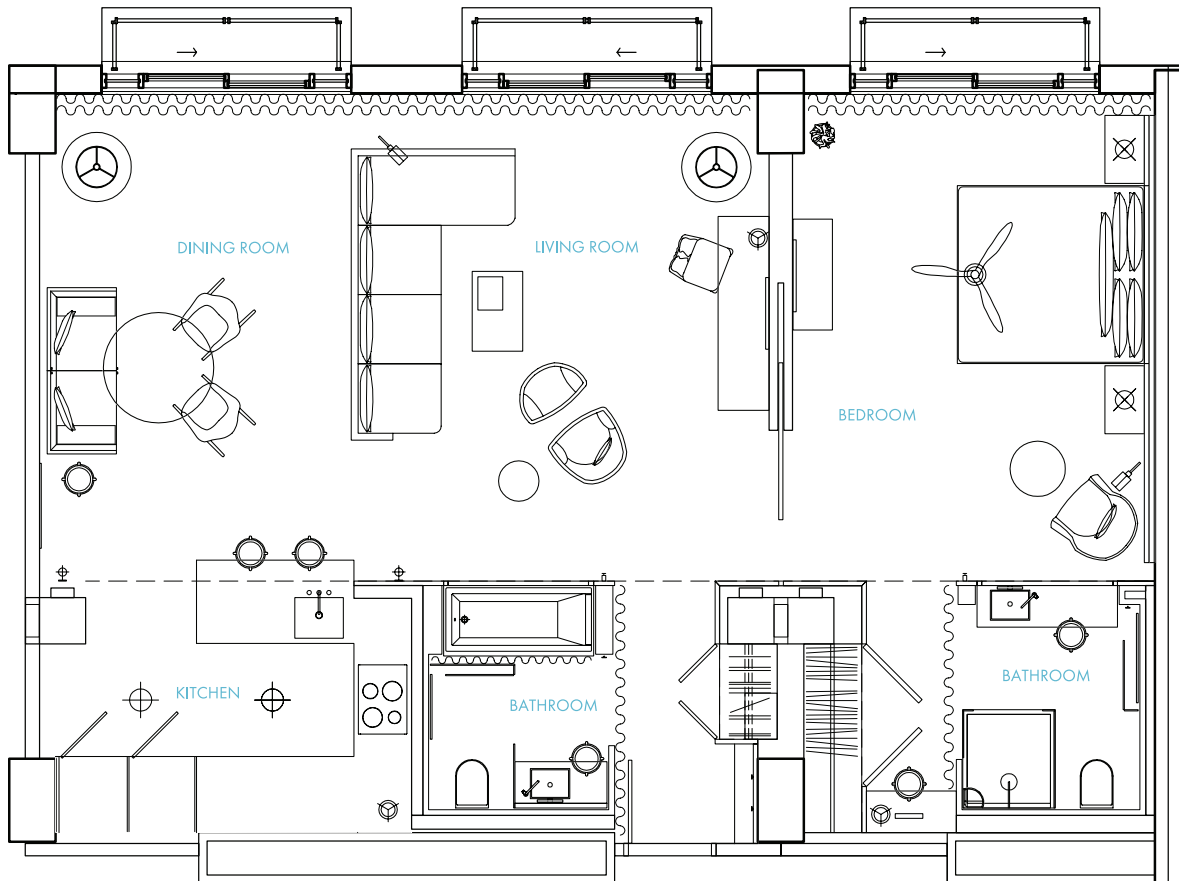




SLS BAHAMAR

One-Bedroom Deluxe Residence

INTERIOR 981 SQ FT | EXTERIOR 54-182 SQ FT
TOTAL 1035-1163 SQ FT



BAHA MAR
RESIDENCES

NASSAU, THE BAHAMAS

RESIDENCES@BAHAMAR.COM

Unit Floor Plans are dimensioned but not to scale. Square footage is approximate and constitutes an estimate only. Square footage can vary and is subject to differing measuring techniques. Units are being sold based upon the Unit and its location without any guaranty of actual square footage. Furnishings and their layout may not be representative of actual Unit furnishings. This is not an offering in any jurisdiction where prohibited by law and materials will not be forwarded into such jurisdictions unless the Developer has complied with the requirements of such jurisdiction. CTF BM Operations, Ltd. uses the Rosewood™ and the SLS™ brand names and certain trademarks (collectively, the "Trademarks") in connection with the sales and marketing of the Residential Units in Baha Mar under limited, non-exclusive, non-transferable and non-sublicensable licenses. The foregoing licenses may be terminated or may expire without renewal, in which the Residential Units and any part of Baha Mar will be branded, identified or affiliated with any of the Trademarks or have any rights to use the Trademarks. Rosewood Hotels and Resorts, LLC ("Rosewood"), SBE Hotel Management, LLC ("SBE" or "SLS") or any of their affiliates (collectively, the "Brands") do not have any responsibility for the development, offering, marketing, sale or solicitation of the Residential Units at Baha Mar, the contents of any governing documents and any offering and sales documents (including, without limitation, the budgets therein), or the sales and marketing process (including, without limitation, any sales or marketing materials and any statements or representations by Developer, brokers or sales persons).

Copyright © 2019 - CTF BM Operations, Ltd. - All Rights Reserved.

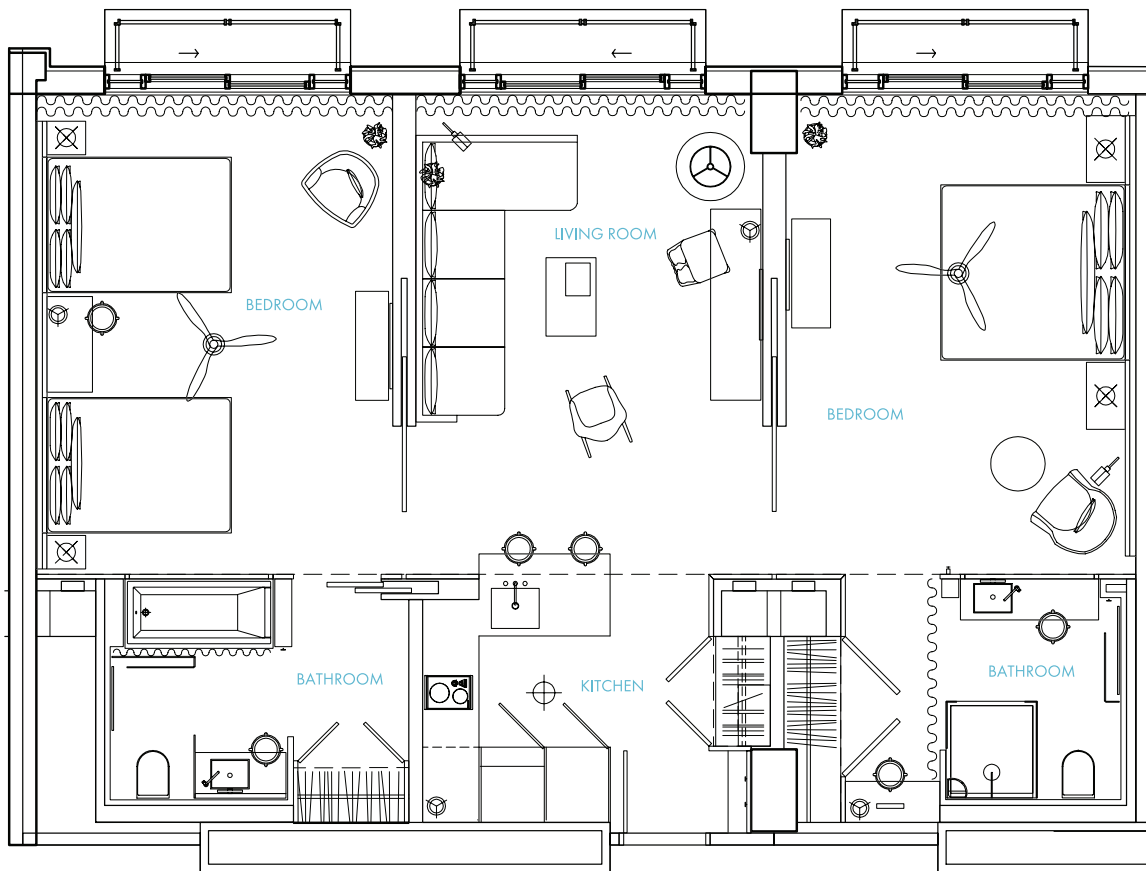




SLS BAHAMAR

Two-Bedroom Residence

INTERIOR 956 SQ FT | EXTERIOR 69-203 SQ FT
TOTAL 1025-1159 SQ FT



BAHA MAR
RESIDENCES

NASSAU, THE BAHAMAS

RESIDENCES@BAHAMAR.COM

Unit Floor Plans are dimensioned but not to scale. Square footage is approximate and constitutes an estimate only. Square footage can vary and is subject to differing measuring techniques. Units are being sold based upon the Unit and its location without any guaranty of actual square footage. Furnishings and their layout may not be representative of actual Unit furnishings. This is not an offering in any jurisdiction where prohibited by law and materials will not be forwarded into such jurisdictions unless the Developer has complied with the requirements of such jurisdiction. CTF BM Operations, Ltd uses the Rosewood™ and the SLS™ brand names and certain trademarks (collectively, the "Trademarks") in connection with the sales and marketing of the Residential Units in Baha Mar under limited, non-exclusive, non-transferable and non-sublicensable licenses. The foregoing licenses may be terminated or may expire without renewal, in which the Residential Units and any part of Baha Mar will be branded, identified or affiliated with any of the Trademarks or have any rights to use the Trademarks. Rosewood Hotels and Resorts, LLC ("Rosewood"), SBE Hotel Management, LLC ("SBE" or "SLS") or any of their affiliates (collectively, the "Brands") do not have any responsibility for the development, offering, marketing, sale or solicitation of the Residential Units at Baha Mar, the contents of any governing documents and any offering and sales documents (including, without limitation, the budgets therein), or the sales and marketing process (including, without limitation, any sales or marketing materials and any statements or representations by Developer, brokers or sales persons).

Copyright © 2019 – CTF BM Operations, Ltd. – All Rights Reserved.

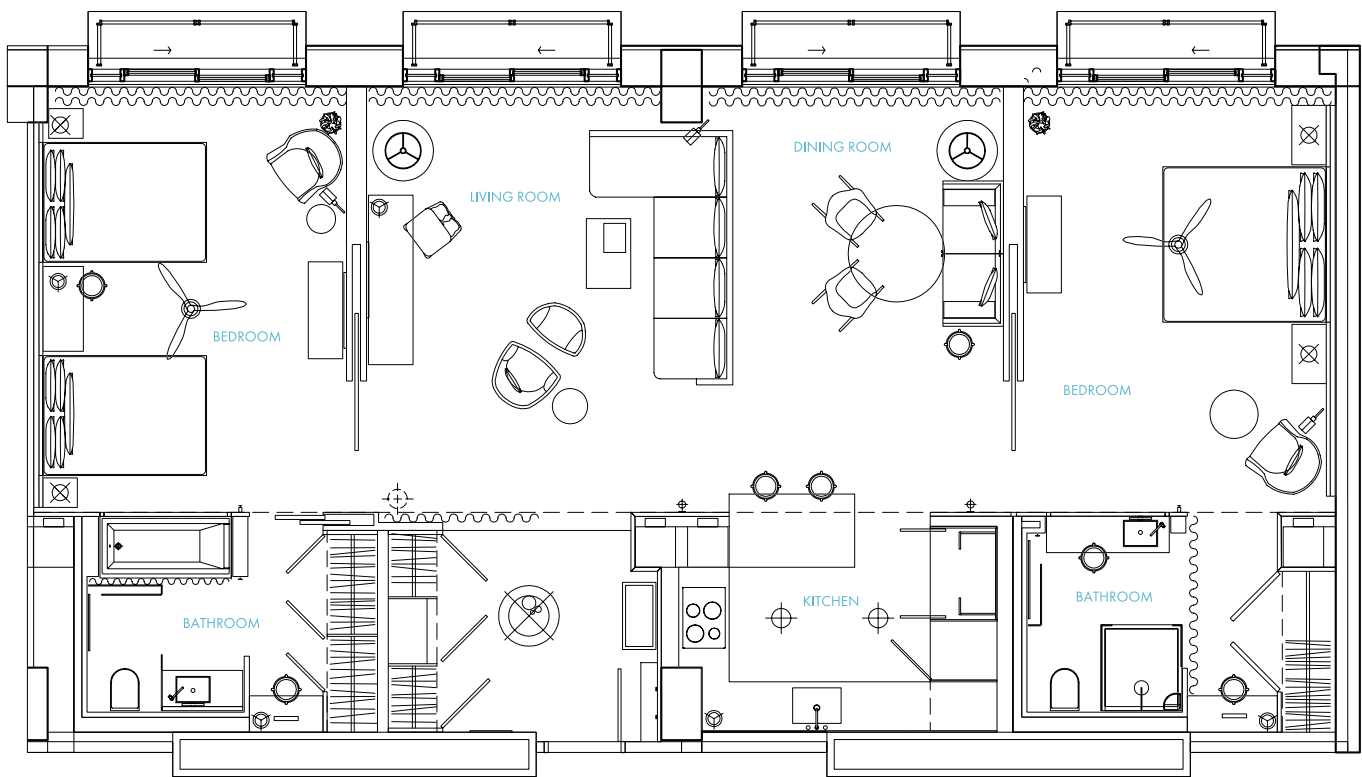




SLS BAHAMAR

Two-Bedroom Large Residence

INTERIOR 1321 SQ FT | EXTERIOR 73-237 SQ FT
TOTAL 1394-1558 SQ FT



BAHA MAR
RESIDENCES

NASSAU, THE BAHAMAS

RESIDENCES@BAHAMAR.COM

Unit Floor Plans are dimensioned but not to scale. Square footage is approximate and constitutes an estimate only. Square footage can vary and is subject to differing measuring techniques. Units are being sold based upon the Unit and its location without any guaranty of actual square footage. Furnishings and their layout may not be representative of actual Unit furnishings. This is not an offering in any jurisdiction where prohibited by law and materials will not be forwarded into such jurisdictions unless the Developer has complied with the requirements of such jurisdiction. CTF BM Operations, Ltd uses the Rosewood™ and the SLS™ brand names and certain trademarks (collectively, the "Trademarks") in connection with the sales and marketing of the Residential Units in Baha Mar under limited, non-exclusive, non-transferable and non-sublicensable licenses. The foregoing licenses may be terminated or may expire without renewal, in which the Residential Units and any part of Baha Mar will be branded, identified or affiliated with any of the Trademarks or have any rights to use the Trademarks. Rosewood Hotels and Resorts, LLC ("Rosewood"), SBE Hotel Management, LLC ("SBE" or "SLS") or any of their affiliates (collectively, the "Brands") do not have any responsibility for the development, offering, marketing, sale or solicitation of the Residential Units at Baha Mar, the contents of any governing documents and any offering and sales documents (including, without limitation, the budgets therein), or the sales and marketing process (including, without limitation, any sales or marketing materials and any statements or representations by Developer, brokers or sales persons).

Copyright © 2019 – CTF BM Operations, Ltd. – All Rights Reserved.

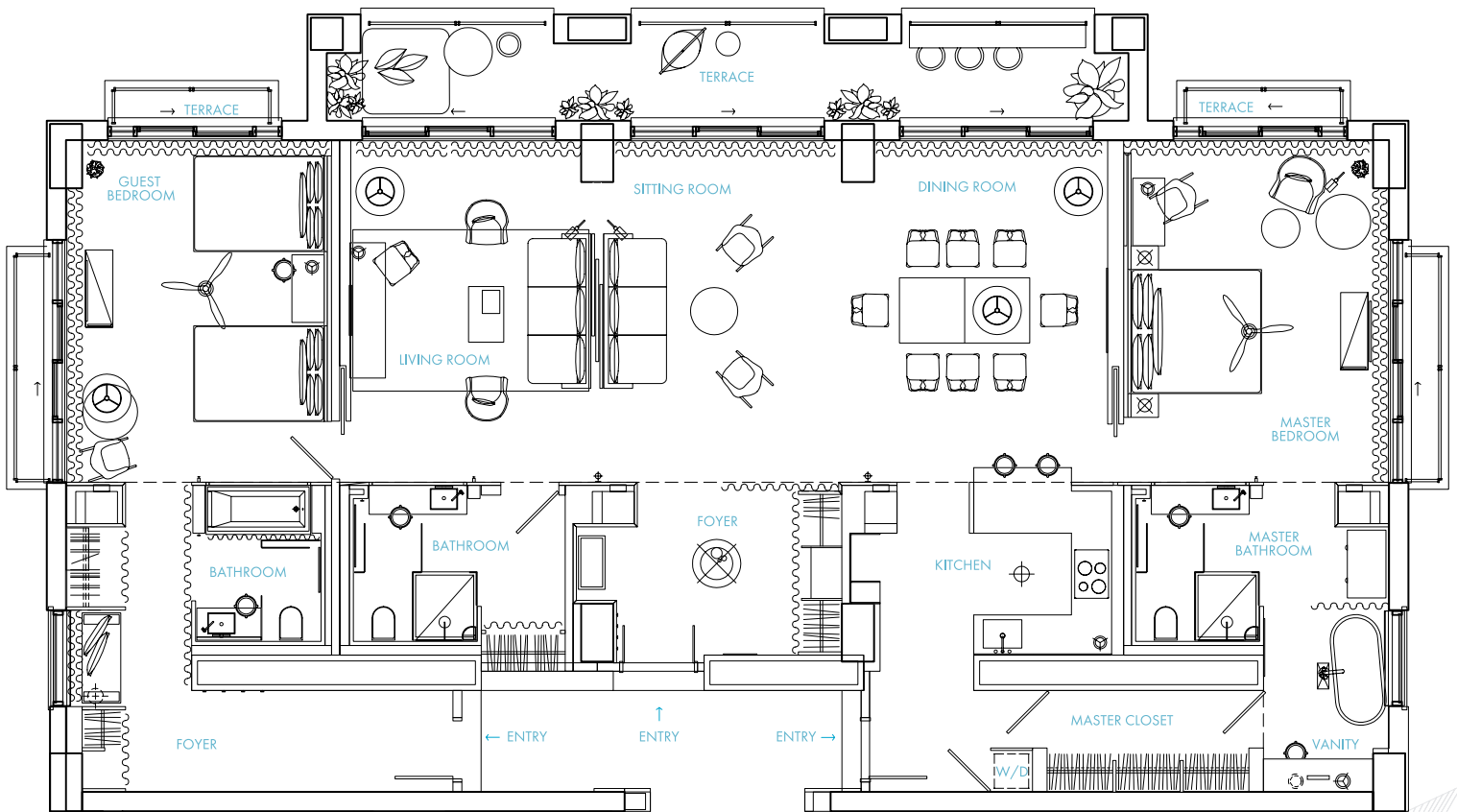




SLS BAHAMAR

Three-Bedroom Residence

INTERIOR 1924 SQ FT | EXTERIOR 565 SQ FT
TOTAL 2489 SQ FT



BAHA MAR
RESIDENCES

NASSAU, THE BAHAMAS

RESIDENCES@BAHAMAR.COM

Unit Floor Plans are dimensioned but not to scale. Square footage is approximate and constitutes an estimate only. Square footage can vary and is subject to differing measuring techniques. Units are being sold based upon the Unit and its location without any guaranty of actual square footage. Furnishings and their layout may not be representative of actual Unit furnishings. This is not an offering in any jurisdiction where prohibited by law and materials will not be forwarded into such jurisdictions unless the Developer has complied with the requirements of such jurisdiction. CTF BM Operations, Ltd. uses the Rosewood™ and the SLS™ brand names and certain trademarks (collectively, the "Trademarks") in connection with the sales and marketing of the Residential Units in Baha Mar under limited, non-exclusive, non-transferable and non-sublicensable licenses. The foregoing licenses may be terminated or may expire without renewal, in which the Residential Units and any part of Baha Mar will be branded, identified or affiliated with any of the Trademarks or have any rights to use the Trademarks. Rosewood Hotels and Resorts, LLC ("Rosewood"), SBE Hotel Management, LLC ("SBE" or "SLS") or any of their affiliates (collectively, the "Brands") do not have any responsibility for the development, offering, marketing, sale or solicitation of the Residential Units at Baha Mar, the contents of any governing documents and any offering and sales documents (including, without limitation, the budgets therein), or the sales and marketing process (including, without limitation, any sales or marketing materials and any statements or representations by Developer, brokers or sales persons).

Copyright © 2019 – CTF BM Operations, Ltd. – All Rights Reserved.

